



UNIVERSITÀ DEGLI STUDI DI TORINO

This is an author version of the contribution published on:

Questa è la versione dell'autore dell'opera:

Compagnoni R., Rolfo F., Groppo C., Hirajima T. & Turello R. (2012). Geological map of the Ultra-High Pressure Brossasco-Isasca Unit (Western Alps, Italy). Journal of Maps, 8 (4), 465-472, doi: 10.1080/17445647.2012.744367

The definitive version is available at:

La versione definitiva è disponibile alla URL:

<http://www.tandfonline.com/doi/full/10.1080/17445647.2012.744367#.UxyYCYVm2>

ul

GEOLOGICAL MAP OF THE ULTRA-HIGH PRESSURE BROSSASCO-ISASCA UNIT (WESTERN ALPS, ITALY)

R. Compagnoni¹, F. Rolfo^{1,2}, C. Groppo¹, T. Hirajima³ & R. Turello¹

(1) Dip. Scienze della Terra, University of Torino (Italy)

(2) CNR - Istituto di Geoscienze e Georisorse, Section of Torino (Italy)

(3) Dept. of Geology and Mineralogy, University of Kyoto (Japan)

Corresponding author

Franco Rolfo

franco.rolfo@unito.it

Tel: +390116705178

Fax: +390116705178

Abstract

In the southern Dora-Maira Massif, Western Alps, slivers of continental crust with similar lithologies, but recrystallised during the Alpine orogeny at different peak-*P* conditions, are exposed. They include the Brossasco-Isasca Unit (BIU) where coesite was first discovered in continental crust (Chopin, 1984).

A new 1:20,000-scale geologic map and related cross-sections of the whole BIU and adjoining units is presented, in which the most significant features useful to infer the pre-Alpine history and the Alpine tectonic and metamorphic evolution, are summarized. Thanks to detailed petrography and petrology, the geologic map shows the precise location of ultra-high pressure (UHP) minerals (such as coesite), and the locations of the most significant mineral assemblages (such as kyanite + jadeite). This innovative approach is used to distinguish the BIU from the adjacent units. Relict pre-Alpine structures (such as igneous intrusive contacts with basement xenoliths and metagranitoids) are summarised in a sketch illustrating the geologic setting of the UHP metamorphic unit as inferred before the Alpine orogeny.

Key words: ultra-high pressure metamorphism (UHPM), Dora-Maira Massif, Western Alps.

Introduction

The Dora-Maira Massif (DMM) extends from Val di Susa (to the north) to Val Maira (to the south) for a length of about 70 km from north to south and an average width of about 25 km from east to west. The DMM together with the Monte Rosa and Gran Paradiso massifs are known as the Internal Crystalline Massifs of the Penninic Domain of the western Alps.

The DMM consists of a composite ensemble of nappes, and traditionally includes three main lithotectonic units formed by a number of tectonic slices (Vialon, 1966) which are (from west to east, and from upper to lower structural levels): 1) the upper Dronero-Sampeyre Unit, 2) the intermediate Polymetamorphic unit, and 3) the lower Pinerolo unit. A revision of the DMM lithotectonic architecture has been done by Sandrone et al. (1993).

After the discovery of coesite (Chopin, 1984) in the southern sector of the intermediate Polymetamorphic unit of Vialon (1966), the scientific interest for the southern DMM increased rapidly and a number of detailed petrologic studies have been produced (e.g., Chopin et al., 1991; Schertl et al., 1991; Compagnoni et al., 1995; Michard et al., 1995; Chopin & Schertl, 2000; Nowlan et al., 2000; Compagnoni & Hirajima, 2001; Groppo et al., 2006; Castelli et al., 2007; Groppo et al., 2007a, b; Ferrando et al., 2009) aimed to determine its peak metamorphic conditions. The UHP unit has also been mapped in great detail, and special attention has been paid to recognize the relics of both pre-Alpine and early-Alpine structures and minerals which are essential to understand nature and relationships among lithologies and to check the internal coherency of the unit.

After the geologic map of Compagnoni et al. (2004), new field data led to define the exact extension of the UHP unit, named Brossasco-Isasca Unit (BIU). As a fundamental contribution of petrology to field mapping, it has been recognized that most crystalline units exposed in the area, though deriving from a same Variscan amphibolite-facies basement intruded by Permian granitoids, were characterized by different early-Alpine high-*P* peak metamorphic overprints, ranging from the epidote-blueschist to the coesite-eclogite-facies conditions (e.g., Chopin et al., 1991; Compagnoni & Rolfo, 2003). The coesite-eclogite bearing BIU is ca. 10 km long, 4 km wide and less than 1 km thick, and is tectonically sandwiched between two quartz-eclogite units, in turn surrounded by two units with early-Alpine epidote blueschist facies overprint (see Insert B in the Geologic Map). The early Alpine *HP* to *UHP* metamorphic peak is in turn overprinted by a late Alpine pervasive greenschist facies recrystallization that extensively obliterated the previous *HP* mineral assemblages and reworked almost all tectonic contacts and shear zones, producing a plethora of contrasting kinematic indicators.

Methods

The mapped area occurs in a vegetated land which extends between ca. 500 and 1500 m a.s.l. Excluding a few main bodies of augen gneiss that make steep and continuous walls, most lithologies have a limited exposure of about 15-20%. However, thanks to the relatively homogeneous outcrop distribution and the constancy of the attitude of the main rock compositional layering and composite metamorphic foliations and shear zones, a reliable interpretative geologic map was produced.

The outcrop map was originally mapped at the 1:10,000 scale. Both the original data and the map are represented on a raster topographic map at the 1:25,000 scale (maps of the IGM, tavolette: 079 I-NO Sanfront, 079 I-NE Revello, 07- I-SO Melle and 079 I-SE Venasca). Because of its high scientific interest, a special attention has been paid to the mapping of the UHP BIU. For the sake of

clarity, in the interpretative geologic map both *eluvium* and *colluvium* deposits, covering more than 70% of the area, have been omitted. Part of this map, devoid of its eastern termination, has been published in a special volume edited in occasion of the International Geological Congress held in Florence in 2004 (Compagnoni et al., 2004).

The main problem to define the real extension of the UHP BIU arises from the fact that the underlying San Chiaffredo unit and the overlying Rocca Solei unit (described later on) derive from the same pre-Alpine basement and include large bodies of orthogneiss derived from late Variscan granitoids (Fig. 1) extensively overprinted by late-Alpine greenschist-facies metamorphism, as also observed in the BIU. The distinction between the UHP BIU and the HP adjacent units is therefore very difficult to determine in the field.

Our study has shown that a distinction between several tectonometamorphic units recrystallized at different HP conditions is only possible if the geologic survey is coupled with a close net of sampling and a detailed petrologic, microstructural and mineralochemical study. Consequently, more than 800 samples have been collected (Fig. 2) and the relevant thin sections have been studied by means of the optical polarizing microscope (Fig. 3, 4). A selection of representative samples has been studied at the SEM-EDS (Energy-Dispersive Spectroscopy) and WDS (Wavelength-Dispersive Spectroscopy) and the chemical composition of minerals has been determined with special attention to the mineral zoning and micro-inclusion occurrence. The analytical data have been organized in a database and used to constrain the whole metamorphic evolution of the BIU and adjoining units (see for example the review by Compagnoni & Rolfo, 2003).

Once acquired, the *P-T* data have been used to define the extension of each coherent unit. This approach led to definition of four adjacent tectonometamorphic units, and help to trace their tectonic contacts (see below) that are usually hidden by the poor rock exposure and the strong late-Alpine greenschist-facies overprint.

The nappe pile of southern Dora-Maira Massif

On the basis of geologic and microstructural data, with the essential contribution of petrology, in the mapped area the following four main tectonometamorphic units have been distinguished, from the lower to the upper structural levels:

- 1) The **Pinerolo Unit** consists of prevailing graphitic phengite-gneiss, locally garnet- and chloritoid-bearing, with intercalations of phengite-quartzite and minor garnet-bearing paraschist including lenses of metabasite. The early-Alpine metamorphic peak at epidote-blueschist facies conditions was overprinted by a late-Alpine greenschist-facies recrystallization.
- 2) The **San Chiaffredo Unit** is a portion of a pre-Alpine continental crust similar to the BIU, consisting of a Variscan amphibolite-facies metamorphic basement (now micaschist and eclogite) intruded by Permian granitoids (now fine-grained orthogneiss and augen-gneiss). The early-Alpine metamorphism under quartz-eclogite facies conditions was overprinted by a pervasive late-Alpine greenschist-facies recrystallization.
- 3) The **Brossasco-Isasca Unit (BIU)** consists of a Variscan amphibolite-facies metamorphic basement (now garnet-kyanite micaschist, impure marble and eclogite) intruded by Permian granitoids (Gebauer et al., 1997) (now mainly augen-gneiss and minor metagranite and pyrope-bearing whiteschist: Fig. 2a-b) which produced a contact metamorphic aureole (Fig. 2c). The early-Alpine metamorphic stage under coesite-eclogite facies conditions was overprinted by a pervasive late-Alpine greenschist-facies recrystallization. The BIU is sandwiched between the

overlying Rocca Solei Unit and the lower Pinerolo Unit; the small San Chiaffredo Unit is inserted between the BIU and the Pinerolo Unit.

- 4) The **Rocca Solei Unit** is also a portion of a pre-Alpine continental crust similar to the BIU and the San Chiaffredo Unit, consisting of a Variscan amphibolite-facies metamorphic basement (now garnet- and chloritoid bearing micaschist and micaceous gneiss, marble and eclogite; Matsumoto & Hirajima, 2000), intruded by Permian granitoids (now fine-grained orthogneiss and augen-gneiss with minor metagranitoid). The early-Alpine metamorphism under quartz-eclogite facies conditions was overprinted by a pervasive late-Alpine greenschist-facies recrystallization. The San Chiaffredo and Rocca Solei Units could be possibly the same unit repeated by folds. However, it seems highly unlikely that such geometry would allow to insert the UHP BIU in between, with a totally different exhumation history.

Suggested petrologic criteria for recognising the UHP BIU from the adjoining HP units

In order to distinguish tectonometamorphic units of continental crust that experienced polymetamorphic and polyphase overprints at different P - T conditions, the main problem derives from the fact that the latest tectonometamorphic events extensively obliterated the previous mineral assemblages and structures. This problem is very serious in quartz-rich continental crust that was exhumed after the HP metamorphism, because the HP minerals are strongly sensitive to decompression and are transformed very easily to low- P mineral assemblages, losing traces of the previous history. This problem may be partially overcome if micro-inclusions in minerals less sensitive to decompression, such as garnet, are examined in detail.

The general criteria listed below may be applied to similar metamorphic basement, i.e. to continental crust lithologies that experienced HP to UHP metamorphism. Figure 3 shows the main differences between UHP and HP assemblages in metagranitoid (Figs. 3a,b), eclogite (Figs. 3c,d) and metapelite (Figs. 3e,f) from the BIU and the overlying Rocca Solei unit, respectively. The petrologic criteria used to distinguish the UHP BIU from the adjacent HP units are the following:

(1) Presence of peculiar lithologies and mineral assemblages:

- (a) “whiteschist”, i.e. metasomatic rocks with granitoid protolith (see e.g., Compagnoni & Hirajima, 2001; Ferrando et al., 2009; Ferrando, 2012).
- (b) “Na-whiteschist”, metasomatic rocks with similar bulk rock chemical composition as the “whiteschist”, except for the presence of Na instead of K.

(2) Presence or lack of index minerals:

- (a) Coesite is found as armoured inclusions in minerals such as garnet (pyrope and almandine), clinopyroxene (jadeite and omphacite), kyanite, zoisite, and zircon. The coesite relics are often rimmed with palisade quartz or are totally replaced by polycrystalline quartz aggregates derived from coesite inversion, with radial cracks in the surrounding mineral, due to the volume increase connected to the coesite ($\delta=2.92$) - quartz ($\delta=2.65$) inversion (Figs. 3c, 4a,f).
- (b) Pyrope (Fig. 2b) with composition very close to that of the pure end-member ($\text{Prp}_{80 \text{ to } 98}$) in the “whiteschist” (e.g., Ferrando et al., 2009).
- (c) Occurrence of other UHP index minerals, such as ellenbergerite (Fig. 4b), phospho-ellenbergerite, or magnesioidumortierite found as inclusions armoured in pyrope (Chopin & Ferraris, 2003).

- (d) Glaucophane with composition very close to that of the pure Fe-free end-member in rocks whose chemistry in the NMASH system approaches that of the “sodic whiteschist” (Kienast et al., 1991).
- (e) In metagranitoids, granoblastic polygonal quartz aggregate pseudomorphous after the former igneous quartz crystals (Figs. 2a, 3a, 4c), interpreted as evidence of the former presence of UHP coesite (Biino & Compagnoni, 1992).
- (f) The presence of aragonite instead of calcite in BIU marbles is not to be expected (e.g., Castelli et al., 2007; Groppo et al., 2007b) because of the high speed of the aragonite to calcite inversion at the relatively high-*T* of the BIU metamorphism.

(3) Presence of peculiar mineral assemblages:

- (a) Pyrope + coesite (or polycrystalline quartz aggregates as its inversion product) (Fig. 4a,d) instead of kyanite + talc in the “whiteschist” (e.g., Ferrando et al., 2009).
- (b) Kyanite + jadeite (Fig. 4e, f) instead of paragonite in orthogneiss of suitable composition.
- (c) Kyanite instead of paragonite in eclogite.
- (d) Eclogite with peak recrystallization *T* of ca. 730 °C instead of 500-550 °C of the nearby units (e.g., Groppo et al., 2007a).
- (e) Almandine + kyanite (Fig. 3e) instead of chloritoid + quartz (Fig. 3f) in metapelite of suitable composition (e.g., Groppo et al., 2006).
- (f) Grossular-rich garnet + rutile (+ phengite) instead of the lower-*P* assemblage titanite + clinozoisite in orthogneiss.

(4) Peculiar compositions and micro-/nanostructures in minerals:

- (a) Phengite with high celadonite (Si > 3.50 a.p.f.u.) and low paragonite (< 10 mol%) substitutions (e.g., Castelli et al., 2007; Groppo et al., 2007a).
- (b) Phengite with unstrained talc and quartz lamellae evident at high resolution transmission electron microscope (HRTEM) (Ferraris et al., 2000).

The application of these general criteria to the BIU and further detailed petrologic studies led to constraining not only its peak *P-T* conditions (e.g. Castelli et al., 2007; Groppo et al., 2007a and references therein) but also its prograde (e.g., Ferrando et al., 2009) and retrograde (e.g., Groppo et al., 2006) trajectories. It is interesting to note that since the BIU discovery (Chopin, 1984) the inferred peak *T* did not change, whereas the peak *P* progressively increased from about 3.3 GPa within the coesite stability field (e.g., Compagnoni et al., 1995) to about 4.3 GPa within the diamond stability field. Even though so far microdiamonds have never been found, the *P* increase of about 1 GPa has been inferred from both experimental petrology (Hermann, 2003) on representative BIU rocks and from a number of different geobarometers and thermodynamic modelling (e.g., Castelli et al., 2007; Groppo et al., 2007a). The lack of diamond may be explained with the sluggishness of the graphite-diamond reaction at the relevant peak *T*.

As a final remark, we would emphasize that this approach (largely based on petrologic, microstructural and minerochemical analyses) led to a novel, significantly more detailed division of otherwise monotonous tectonometamorphic units. Moreover, this approach can be usefully applied to all complex metamorphic terrains, and is thus worthwhile to be put besides classic geological mapping.

Software

The map database was built by ESRI ArcGIS 9, whereas the final map layout was assembled by Corel Draw 9. Photos were managed and compiled with Corel Photo Paint 9.

Acknowledgements

Fieldwork and laboratory work was supported by Italian Consiglio Nazionale delle Ricerche (C.N.R.), and Ministero dell'Università e della Ricerca Scientifica e Tecnologica (Grant ex-40%). The authors thank B. Lombardo for helpful discussions both in the field and in the laboratory. S. Long, R. Schmitt and an anonymous reviewer are gratefully acknowledged for their careful and constructive reviews.

References

- Biino G. & Compagnoni R. (1992). Very-high-pressure metamorphism of the Brossasco coronite metagranite, southern Dora-Maira Massif, western Alps. *Schweizerische mineralogische und petrographische Mitteilungen*, 72, 347-363.
- Castelli D., Rolfo F., Groppo C. & Compagnoni R. (2007). Impure marbles from the UHP Brossasco-Isasca Unit (Dora-Maira Massif, western Alps): evidence for Alpine equilibration in the diamond stability field and evaluation of the X(CO₂) fluid evolution. *Journal of Metamorphic Geology*, 25, 587–603.
- Chopin C. (1984). Coesite and pure pyrope in high-grade blueschists of the western Alps: a first record and some consequences. *Contribution to Mineralogy and Petrology*, 86, 107–118.
- Chopin C., Henry C. & Michard A. (1991). Geology and petrology of the coesite-bearing terrane, Dora Maira massif, Western Alps. *European Journal of Mineralogy*, 3, 263–291.
- Chopin C. & Ferraris G. (2003). Mineral chemistry and mineral reactions in UHPM rocks. In: Ultrahigh pressure metamorphism (eds. Carwell D.A. & Compagnoni R.), *EMU Notes in Mineralogy*, 5, Budapest: Eötvös Univ. Press, 191-227.
- Chopin C. & Schertl H.-P. (2000). The UHP Unit in the Dora-Maira massif, western Alps. In: Ultra-High Pressure Metamorphism and Geodynamics in Collision-type Orogenic Belts (eds. Ernst W.G. & Liou J.G.), *Geological Society of America*, Boulder, 133–148.
- Compagnoni R. & Hirajima T. (2001). Superzoned garnets in the coesite-bearing Brossasco-Isasca Unit, Dora-Maira Massif, Western Alps, and the origin of the whiteschists. *Lithos*, 57, 219-236.
- Compagnoni R. & Rolfo F. (2003). UHPM units in the Western Alps. In: Ultrahigh pressure metamorphism (eds. Carwell D.A. & Compagnoni R.), *EMU Notes in Mineralogy*, 5, Budapest: Eötvös Univ. Press, 13-49.
- Compagnoni R., Hirajima T. & Chopin C. (1995). Ultra-high-pressure metamorphic rocks in the Western Alps. In: Ultrahigh Pressure Metamorphism (eds. Coleman R.G. & Wang X.), *Cambridge University Press*, 206-243.
- Compagnoni R., Rolfo F., Groppo C., Hirajima T. & Turello R. (2004). Mapping of Alpine rocks characterized by “HP” to “UHP” metamorphic overprint in the Southern Dora-Maira Massif (Western Alps). In: Mapping Geology in Italy (eds. Pasquarè G., Venturini C., Gropelli G.), APAT, Dipartimento Difesa del Suolo, Servizio Geologico d’Italia, Roma 2004 (2006), Map 34, 287-294, Printed by S.EL.CA. – Firenze (http://www.isprambiente.gov.it/site/it-IT/Pubblicazioni/Pubblicazioni_di_pregio/Documenti/mapping_geology_in_italy.html#Sommaro).
- Ferrando S., Frezzotti M.L., Petrelli M. & Compagnoni R. (2009). Metasomatism of continental crust during subduction: the UHP whiteschists from the Southern Dora-Maira Massif (Italian Western Alps). *Journal of Metamorphic Geology*, 27, 739-756.
- Ferrando S. (2012). Mg-metasomatism of metagranitoids from the Alps: genesis and possible tectonic scenarios. *Terra Nova*, doi: 10.1111/j.1365-3121.2012.01078.x
- Ferraris C., Chopin C., Wessicken R. (2000). Nano- to micro-scale decompression products in ultrahigh-pressure phengite: HRTEM and AEM study, and some petrological implications. *Amer. Mineral*, 85, 1195-1201.
- Gebauer, D., Schertl, H.-P., Brix, M. & Schreyer, W. (1997). 35 Ma old ultrahigh-pressure metamorphism and evidence for very rapid exhumation in the Dora Maira Massif, Western Alps. *Lithos*, 41:5–24.
- Groppo, C., Castelli, D. & Compagnoni, R. (2006). Late chloritoid-staurolite assemblage in a garnet-kyanite bearing metapelite from the UHP Brossasco-Isasca Unit (Dora-Maira Massif, Western Alps): new petrological constraints for a portion of the P-T decompressional path. In: Ultrahigh-pressure metamorphism: Deep continental subduction (eds. Hacker, B.H., McClelland, W.C. & Liou, J.G.). *GSA Special Paper*, 403, 127–138.
- Groppo, C., Lombardo B., Castelli D., & Compagnoni R. (2007a). Exhumation history of the UHPM Brossasco-Isasca Unit, Dora-Maira Massif, as inferred from a phengite-amphibole eclogite. *International Geology Review*, 49, 142-168.

- Groppo C., Rolfo F. & Castelli D. (2007b). Pre-Alpine HT mineral relics in impure marbles from the UHP Brossasco-Isasca Unit (Dora-Maira Massif, western Alps). *Periodico di Mineralogia* (Rome), 76, 155-168.
- Hermann, J. (2003). Experimental evidence for diamond-facies metamorphism in the Dora-Maira massif. *Lithos*, 70, 163–182.
- Kienast, J.R., Lombardo, B., Biino, G. & Pinardon, G. (1991). Petrology of very-high-pressure eclogitic rocks from the Brossasco–Isasca Complex, Dora-Maira massif, Italian Western Alps. *Journal of Metamorphic Geology*, 9, 19–34.
- Matsumoto, N. & Hirajima, T. (2000). Garnet in pelitic schists from a quartz-eclogite unit of the southern Dora-Maira massif, Western Alps. *Schweizerische mineralogische und petrographische Mitteilungen*, 80, 53–62.
- Michard A., Henry C. & Chopin C. (1995). Structures in UHPM rocks: a case study from the Alps. In: Ultrahigh Pressure Metamorphism (eds. Coleman R.G. & Wang X.), *Cambridge University Press*, 132-158
- Nowlan, E.U., Schertl, H.P. & Schreyer, W. (2000). Garnet–omphacite–phengite thermobarometry of eclogites from the coesite-bearing unit of the southern Dora-Maira Massif, Western Alps. *Lithos*, 52, 197–214.
- Rubatto, D. & Hermann, J. (2001). Exhumation as fast as subduction? *Geology*, 16, 577–588.
- Sandrone R., Cadoppi P., Sacchi R. & Vialon P. (1993). The Dora-Maira Massif. In: The pre-Mesozoic geology in the Alps (eds. von Raumer, J.F. & Neubauer, F.), *Springer-Verlag*, Berlin, 317–325.
- Schertl H.-P., Schreyer W. & Chopin C. (1991). The pyrope-coesite rocks and their country rocks at Parigi, Dora-Maira Massif, Western Alps: detailed petrography, mineral chemistry and P-T path. *Contribution to Mineralogy and Petrology*, 108, 1-21.
- Vialon P. (1966). Etude géologique du Massif Cristallin Dora-Maira, Alpes Cottiennes internes, Italie. PhD Tesis, Univ. Grenoble, *Travaux du Lab. Géol. Fac. Sci. Grenoble, Memoir 4*, 193 p.
- Whitney D.L. & Evans B.W. (2010). Abbreviations for names of rock-forming minerals. *American Mineralogist*, 95, 185–187.

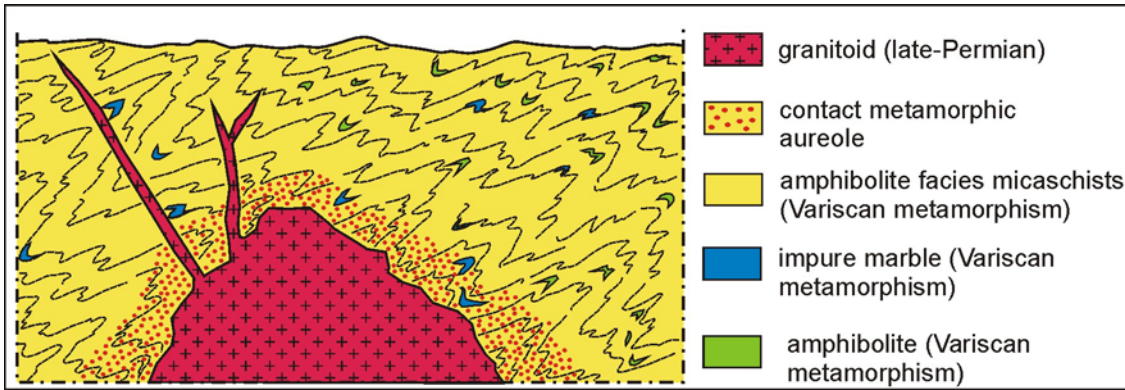


Fig. 1 – Schematic diagram representing pre-Alpine relationships among BIU lithologies as inferred from the few preserved structural and mineralogical relics that escaped the Alpine polyphase pervasive deformation.

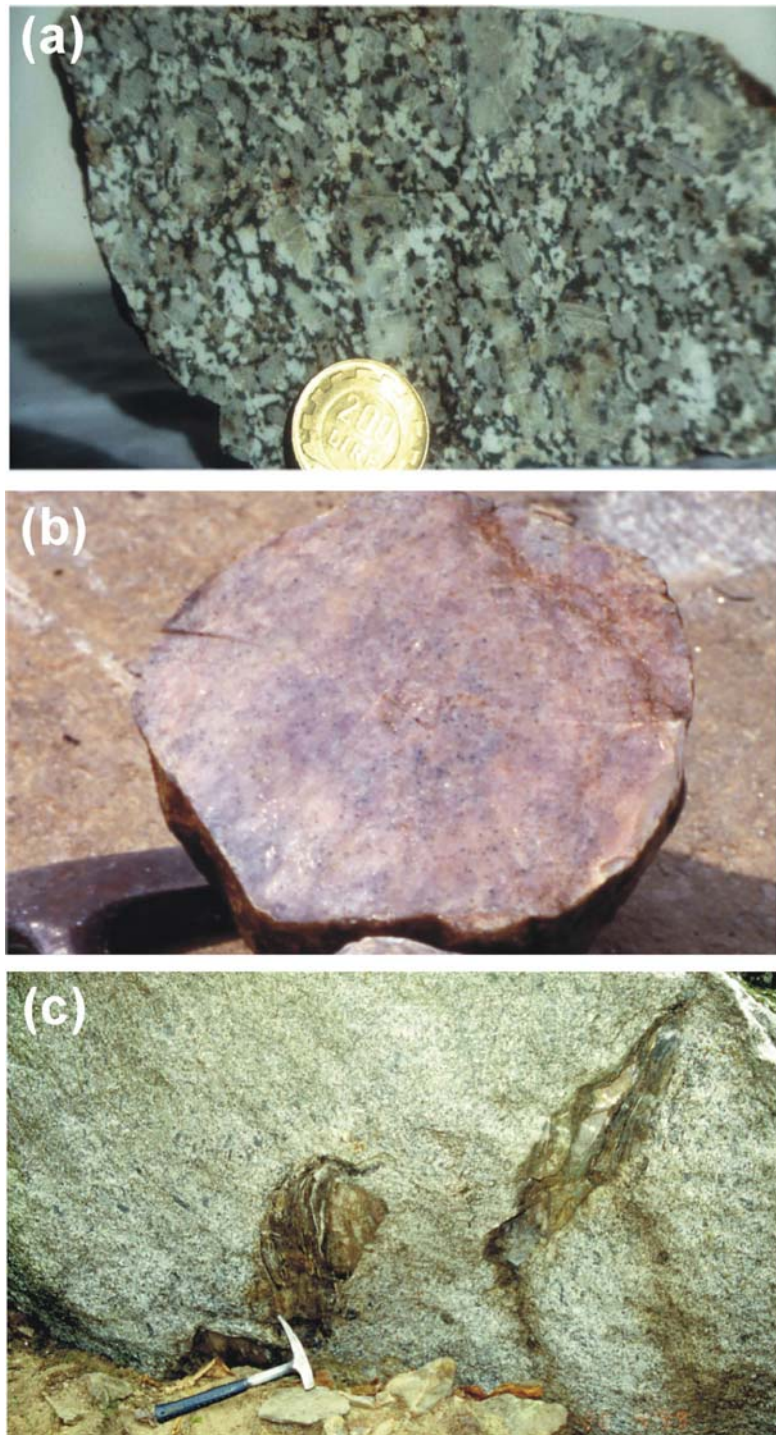


Fig. 2 – Representative BIU lithologies. **(a)** Relict late-Variscan metagranite of the Monometamorphic Complex. In hand specimen, the only evidence of the UHP metamorphic overprint is a poorly-developed foliation (roughly NS) and the sugary appearance of the original igneous quartz, now consisting of a granoblastic polygonal aggregate of metamorphic quartz, derived from inversion from former peak-*P* coesite (see also Figs. 3a, 4c). The coin is 20 mm across. **(b)** Pyrope megablast, ca. 20 cm across, from the whiteschist of the Monometamorphic Complex. The light pink garnet colour is due to its composition, very close to the pure pyrope end-member. Note that pyrope is crowded with inclusions of kyanite, rutile, etc. (see also Figs. 4a,b,d). **(c)** Marginal facies of the late-Variscan metagranite, crowded with contact metamorphosed xenoliths of the country Variscan paraschist. Note that the xenoliths preserve a clear Variscan metamorphic foliation. Case Bastoneri, Gilba valley.

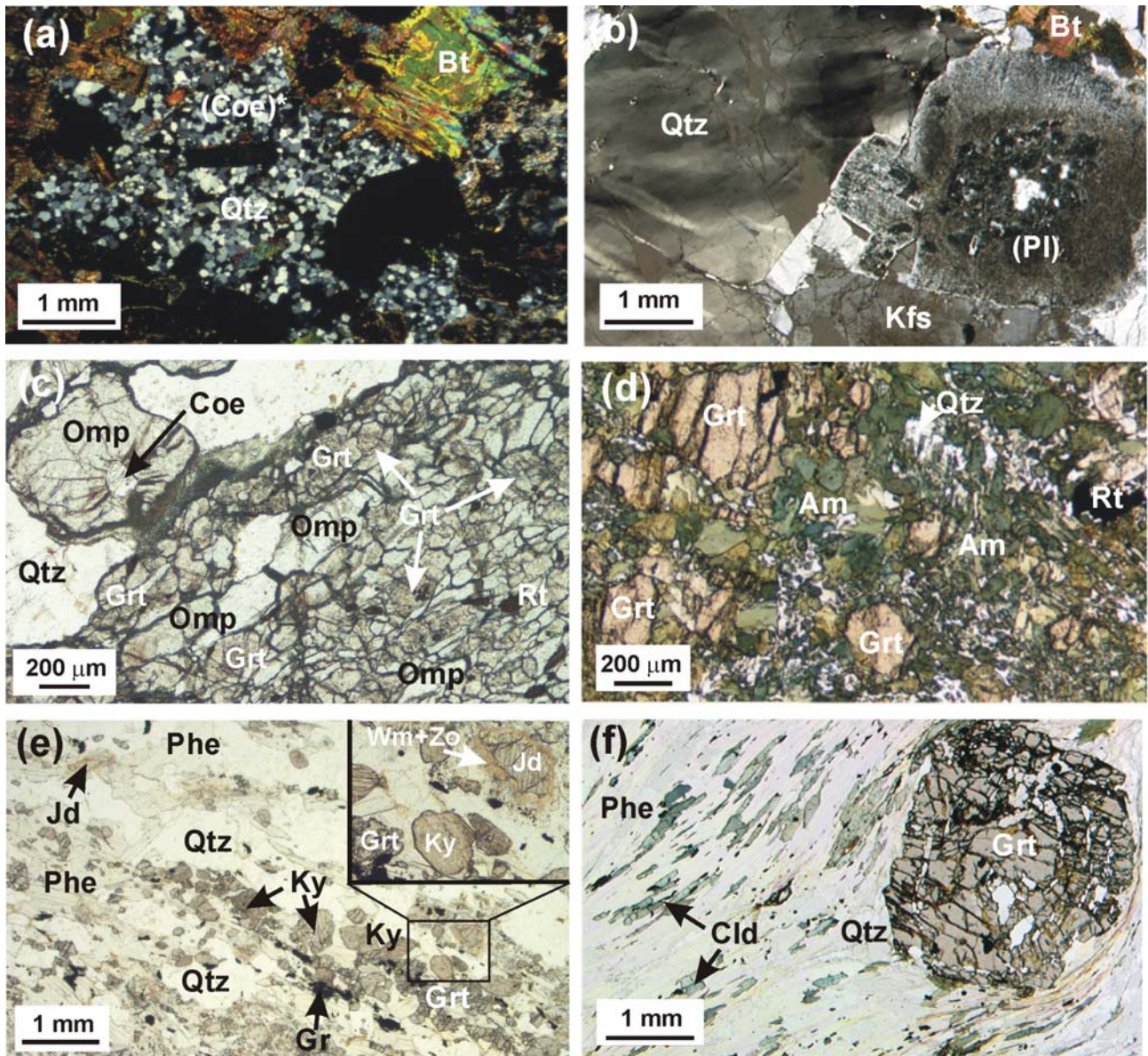


Fig. 3 – Representative microstructures and assemblages of metagranitoid, eclogite and metapelite from the UHP BIU and the overlying HP Rocca Solei Unit, as seen under optical microscope. **(a)** Metagranitoid from the UHP Brossasco-Isasca Unit. Note the fine grained granoblastic aggregate of quartz, statically derived from inversion of coesite which replaces the igneous quartz during UHP metamorphism. Sample DM496. Crossed Polars (XPL). Mineral abbreviations after Whitney & Evans (2010). **(b)** Metagranite from the HP Rocca Solei Unit. Note in the left portion of the photomicrograph a single grain of igneous quartz, with wavy extinction due to incipient deformation, which indicates that the rock did not experience pressures higher than the quartz upper stability. Sample DM 1513. XPL. **(c)** Fine-grained eclogite from the UHP Brossasco-Isasca Unit. Note in the upper left portion of the photomicrograph the coarse grained omphacite + quartz (after coesite) vein, and the coesite relic preserved within omphacite. The foliation is defined by preferred orientation of omphacite. Sample DM1586. Plane Polarized Light (PPL). **(d)** Eclogite from HP Rocca Solei Unit. Dark green retrograde edenitic to pargasitic amphibole replaces garnet and omphacite. Sample DM1497. PPL. **(e)** Metapelite from UHP Brossasco-Isasca Unit. The rock consists of quartz (after coesite), garnet, kyanite, jadeite, phengite and accessory rutile and graphite.

The kyanite-jadeite assemblage indicates that the rock experienced pressures higher than the upper paragonite stability. Sample DM689. PPL. (f) Metapelite from the HP Rocca Solei Unit. The rock consists of quartz, phengite, chloritoid, and garnet porphyroblasts. The presence of chloritoid + quartz points to low- T conditions and indicates that the rock did not experience UHP metamorphic conditions. Sample DM1504. PPL.

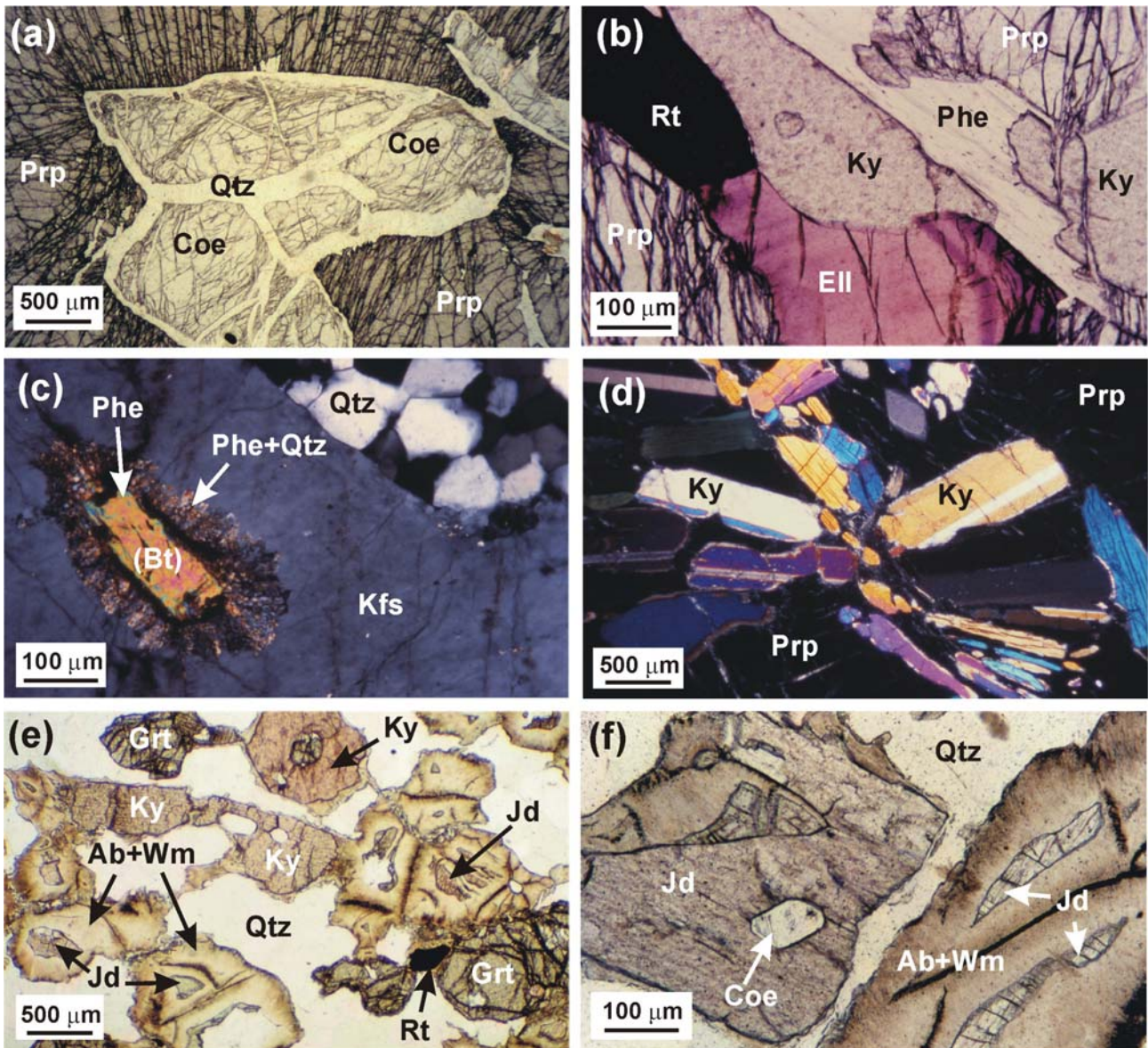


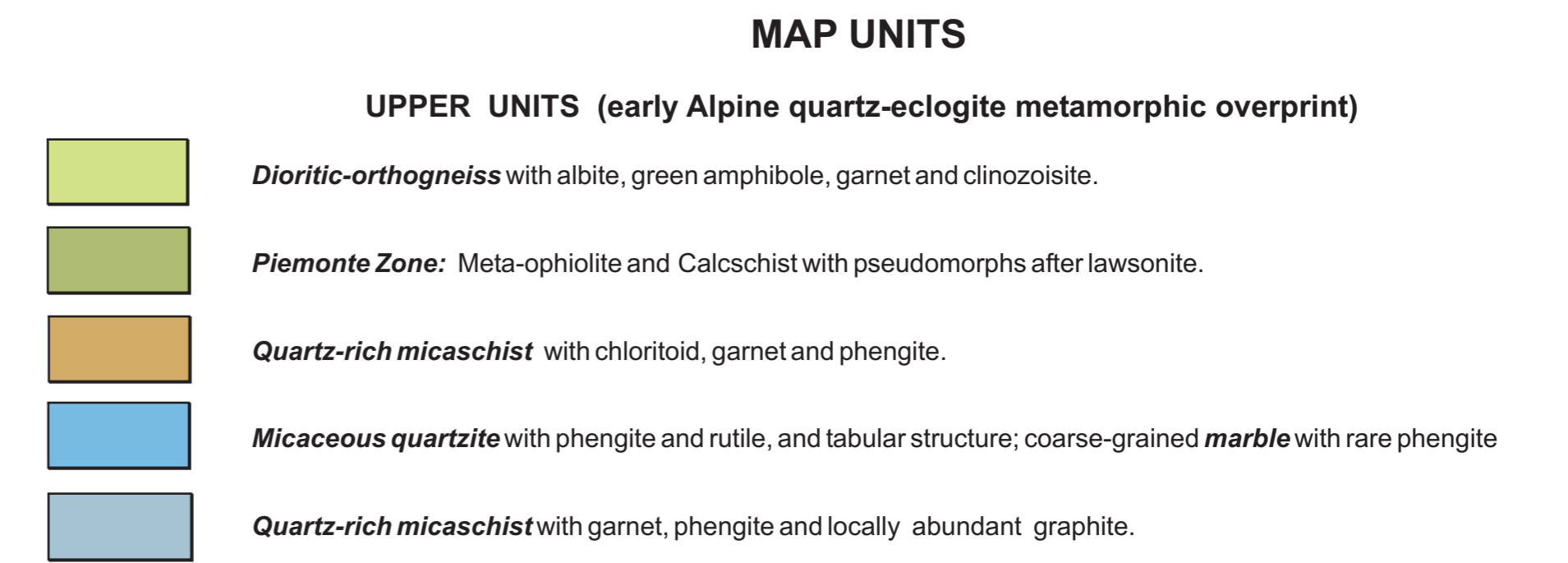
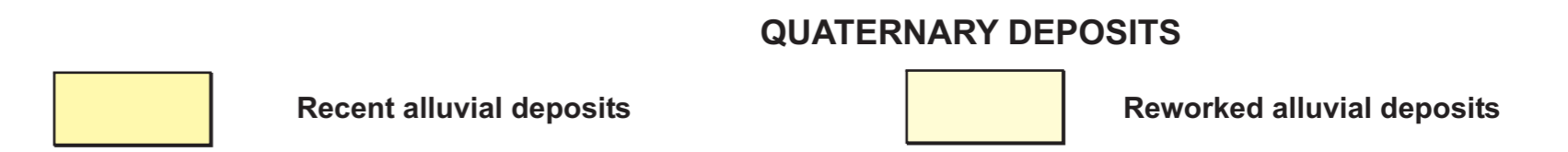
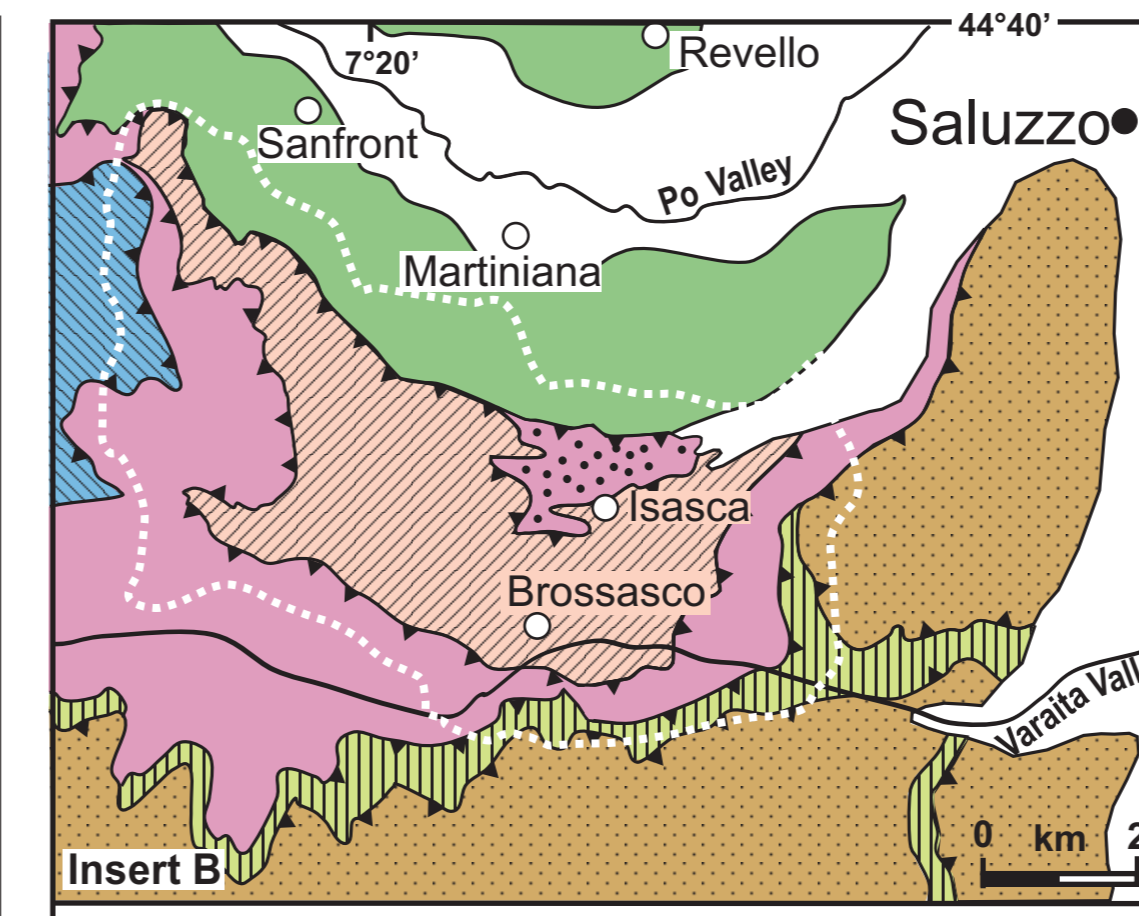
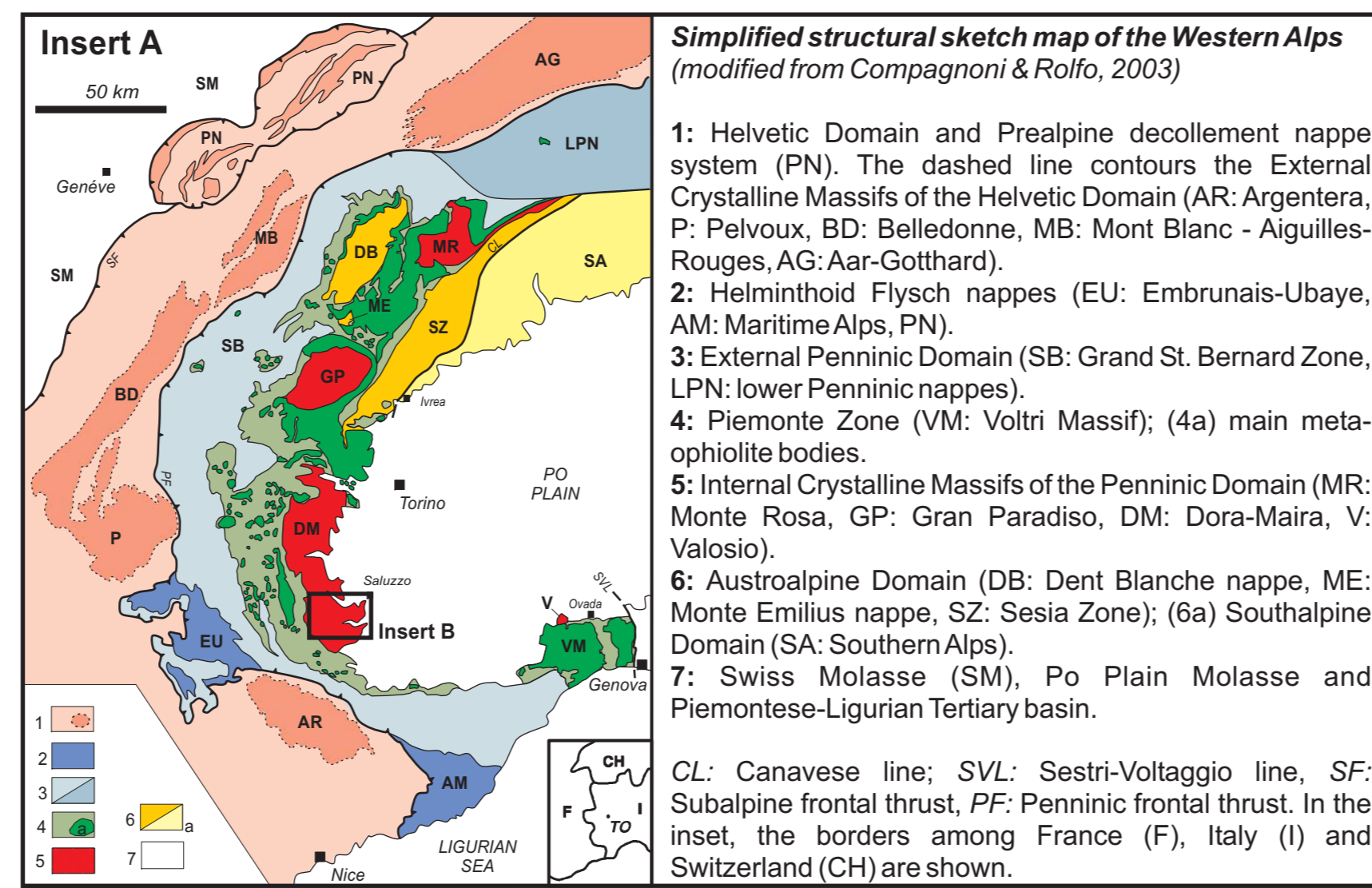
Fig. 4 – Representative index minerals and assemblages diagnostic of UHP metamorphism in the BIU. (a) Pyrope whiteschist. Relics of coesite, included in a pyrope porphyroblast, are partially converted to quartz along rims and fractures. Radial fractures, consequent to volume increase during the coesite to quartz inversion, are developed in the hosting pyrope. Sample DM507. PPL. (b) Zoned ellenbergerite in association with kyanite, phengite, and rutile armored in a pyrope megablast from a whiteschist. Ellenbergerite, a mineral so far reported only from the UHP BIU unit, is always preserved as inclusion. Sample DM450. PPL. (c) Detail of a metagranite, showing an igneous biotite included in a K-feldspar which is pseudomorphically replaced by a single phengite crystal and surrounded by a thin garnet corona and a dactylitic phengite + quartz intergrowth. In the upper right, a granoblastic polygonal quartz aggregate from former peak coesite, developed after primary igneous quartz. Sample DM 60. XPL. (d) Radial kyanite aggregate in pyrope (black) from whiteschist. Some pyropes contain more than 50 vol.% of mineral inclusions, kyanite largely prevailing. Sample DM450. XPL. (e) Garnet - jadeite - kyanite - quartz / (coesite) granofels. The presence of the jadeite + kyanite assemblage indicates that P conditions, higher than the paragonite breakdown, have been reached because of the reaction: $Pg = Jd + Ky + H_2O$. In the rock matrix, jadeite is pseudomorphically replaced by albite + white mica, and coesite by granoblastic quartz. (f) Garnet - jadeite - kyanite - quartz / (coesite) granofels. The presence of the jadeite + kyanite assemblage indicates that P conditions, higher than the paragonite breakdown, have been reached because of the reaction: $Pg = Jd + Ky + H_2O$. In the rock matrix, jadeite is pseudomorphically replaced by albite + white mica, and coesite by granoblastic quartz.

Sample DM442. PPL. (f) Coesite, partly inverted to quartz, included in a jadeite from a kyanite - jadeite - quartz / (coesite) granofels. Jadeite is mostly retrogressed to albite + white mica. Sample DM442. PPL.

GEOLOGICAL MAP OF THE UHP BROSSASCO - ISASCA UNIT (WESTERN ALPS)

Roberto Compagnoni¹, Franco Rolfo^{1,2}, Chiara Groppo¹, Takao Hirajima³, Robertino Turello¹

(1) Dip. Scienze della Terra, University of Torino (Italy); (2) CNR -Istituto di Geoscienze e Georisorse, Section of Torino (Italy); (3) Dep. of Geology and Mineralogy, University of Kyoto (Japan)



Monometamorphic Complex (derived from Alpine recrystallization of late-Variscan granitoids)

Fine-grained orthogneiss with albite, albitized K-feldspar porphyroclasts, epidote and phengite. **Augen-gneiss** (x) with cm-sized K-feldspar porphyroclasts, albite, epidote, phengite, and albite + blue-green amphibole pseudomorphs after glaucophane. Small, undeformed to weakly deformed bodies of **metagranitoid** (γ) with relics of igneous K-feldspar, quartz, dark red biotite (with a discontinuous rim of garnet ± clinzoisite + titanite) and ilmenite (rimmed by titanite ± clinzoisite), and plagioclase (pseudomorphically replaced by albite + clinzoisite ± white mica). Relics of **marginal portions of the pluton**, with cm-sized xenoliths of the host rocks (cf. Polymetamorphic Complex), consisting of clinzoisite and blue-green amphibole, or white mica + biotite + garnet + quartz. Relics of **meta-aplite and metapegmatite** dykes, variably transposed, with K-feldspar, albite and quartz. Dark green interlayers and nodules of **eclogite** (β).

Polymetamorphic Complex (derived from Alpine recrystallization of Variscan amphibolite-facies metamorphic rocks)

Silvery **micaschist** with phengite, cm-sized garnet porphyroblasts (with S defined by quartz and rutile) ± chloritoid (Rocca Solei). Minor **gneissic micaschist** with albite rimmed by oligoclase. Rare interlayers and boudins of **eclogite** (β). Decimetre-thick lenses of **marble** (μ).

BROSSASCO-ISASCA UNIT (early Alpine coesite-eclogite metamorphic overprint)

Monometamorphic Complex (derived from early Alpine recrystallization of late-Variscan granitoids)

Augen-gneiss (x) with cm-sized porphyroclasts of magmatic K-feldspar, plagioclase either saussuritized or transformed to albite rimmed by oligoclase, two generations of phengitic white mica, garnet, epidote (both zoisite and clinzoisite), minor biotite. Metre- to decimetre-long bodies of **metagranitoid** (γ) with preserved magmatic K-feldspar, plagioclase replaced by jadeite (mostly replaced by albite) + zoisite + garnet ± white mica, granoblastic polygonal quartz aggregate derived from inversion of coesite after igneous quartz, magmatic biotite partially replaced by phengite + garnet, magmatic ilmenite replaced by rutile. **Fine-grained orthogneiss**, locally rich in white mica ± biotite, often with mm-sized garnet porphyroblasts; gneiss with cm-sized flakes of phengite. A pervasive greenschist facies overprint is present, which developed albite/oligoclase + (Si-poor) phengite + biotite + clinzoisite + ilmenite/titanite.

"Whiteschist" (ν) ("silvery micaschist" Auct.) as cm- to 10-15 m thick and m- to 50 m long lenses, within orthogneiss, with porphyroblasts to megablasts (μ), 2 mm to 20 cm across, of variably retrogressed pinkish pyrope, quartz and relic coesite, phengite, kyanite and rutile ± talc. Pyrope includes armoured relics of coesite and new (e.g. ellenbergerite) or rare (e.g. Mg-stauriolite) minerals. Millimetre- to m-thick dykes and layers of **meta-aplite and metapegmatite** (x), consisting of quartz, K-feldspar, jadeite (replaced by albite + white mica) ± zoisite + garnet. Very fine-grained dark green **eclogite** (β), occurring within fine-grained gneiss as homogeneous or banded layers or nodules, 1-2 m thick and 3-4 m long.

Relics of pre-Alpine intrusive contacts

(a) **Relics of pre-Alpine paragneiss** ("kinzigite") with **metatect**, characterized by Variscan amphibolite facies regional metamorphism, locally overprinted by **contact metamorphism** close to the contact with the late Variscan granitoids. The "kinzigite" consisted of quartz, garnet, biotite, sillimanite, muscovite, ilmenite, graphite, and the metatect of cm-long quartz-feldspathic pods originally with cordierite, quartz and feldspar, and biotite. The early Alpine coesite-eclogite facies overprint produced pseudomorphous and coronitic microstructures with coesite, garnet, kyanite, phengite, jadeite, zoisite, corundum and rutile. The later Alpine greenschist facies retrogression is locally present. (b) Pre-Alpine relics of **intrusive contacts**, characterized by metagranitoids - formerly consisting of quartz, plagioclase, K-feldspar, biotite and cordierite - crowded with xenoliths of the country rocks (cf. Polymetamorphic Complex).

Polymetamorphic Complex (derived from Alpine recrystallization of Variscan amphibolite-facies metamorphic rocks)

Phengitic micaschist with porphyroblasts of garnet ± kyanite ± jadeite, locally interlayered with cm-thick layers rich in phengite or jadeite (commonly replaced by albite/oligoclase); mineralogical and/or structural relics of pre-Alpine amphibolite facies metamorphism are often preserved. Decimetre- to tens of m-thick lenses of pure **marble** (μ) with calcite, calcite + dolomite, and dolomite, and impure marbles with clinopyroxene (diopside to omphacite) ± phengite ± epidote (zoisite or clinzoisite)/Fe-epidote ± garnet ± microcline ± talc ± accessory titanite, and greenschist facies retrograde amphibole, locally hosting cm- to dm-thick lenses of eclogite. At Costa Monforte: relics of pre-Alpine minerals (green spinel, corundum I, ilmenite and hōgbomite, variably retrogressed to greenschist facies minerals. Cm- to m-thick and dm- to tens of m-long layers and lenses of **dark green eclogite** (β), consisting of omphacite, garnet, rutile ± quartz/coesite ± phengite ± amphibole porphyroblasts; **light green eclogite**, consisting of omphacite, garnet, rutile, quartz/coesite, phengite, kyanite ± zoisite. Relics of coesite are preserved within garnet, omphacite, zoisite and kyanite.

SAN CHIAFFREDO UNIT (early Alpine quartz-eclogite metamorphic overprint)

Monometamorphic Complex (derived from Alpine recrystallization of late-Variscan granitoids)

Fine-grained gneiss with albite (including zoisite, rutile, and blue-green amphibole needles after glaucophane), epidote and phengite. Minor **augen-gneiss** (x) with cm-sized K-feldspar porphyroclasts, albite rimmed by oligoclase, epidote, phengite and rutile. Small relic bodies of **metagranitoid** (γ), with igneous K-feldspar, quartz, dark red biotite (rimmed by clinzoisite ± titanite) and ilmenite (rimmed by titanite), and saussuritized plagioclase. Variably transposed dykes of **meta-aplite and metapegmatite**, with K-feldspar, albite and quartz, locally with graphic texture. Layers and nodules of dark green **eclogite** (β).

Polymetamorphic Complex (derived from Alpine recrystallization of amphibolite-facies Variscan metamorphic rocks)

Micaschist with cm-sized garnet porphyroblasts (including sagenitic rutile), chloritoid, zoisite/epidote, rutile and graphite, and minor **micaschist** with cm-wide albite porphyroblasts and two generations of garnet (porphyroblasts with sagenitic rutile, and small crystals in equilibrium with albite), biotite + albite pseudomorphous after glaucophane, zoisite/epidote, rutile and graphite. Layers and nodules of dark green **eclogite** (β).

PINEROLO UNIT (early Alpine epidote-blueschists metamorphic overprint)

Fine grained gneiss, locally rich in albite rimmed by oligoclase, with epidote (zoisite/c clinzoisite), phengite, rare garnet and rutile, and blue-green amphibole replacing glaucophane; very fine-grained graphite, locally enriched in mm-thick layers (τ). **Gneissic micaschist**, locally rich in very fine-grained graphite, with phengite ± biotite, garnet, albite/oligoclase, blue-green amphibole, rare zoisite/c clinzoisite, and rutile. Dark green **metabasite** (β), consisting of green amphibole, albite rimmed by oligoclase, clinzoisite, chlorite and rare garnet, occurring as 1-2 m thick and 3-4 m long lenses.

Reddish **micaschist** with garnet, phengite ± biotite, clinzoisite, minor albite/oligoclase, albite + biotite ± chlorite pseudomorphous after glaucophane, accessory rutile, and locally abundant very fine-grained graphite (τ).

Quartz-rich gneiss and quartz-rich micaschist, occurring as m- to tens of m-thick lenses grading to massive quartzite, fine-grained gneiss rich in quartz with K-feldspar, albite, phengite, zoisite/c clinzoisite and rare layers rich in very fine-grained graphite (τ); **quartz-rich micaschist** with phengite, garnet, chloritoid, minor clinzoisite, and accessory rutile; very fine-grained graphite is locally abundant (τ).

The Geological Map of the UHP Brossasco-Isasca Unit was compiled from geological surveys by R. Compagnoni, T. Hirajima, F. Rolfo and R. Turello (1987-1994), and C. Groppo (2001-2004).

The topographic map derives from the 1:25,000 maps of the IGM (Istituto Geografico Militare), tavolette: 079 I-NO (Sanfront), 079 I-NE (Revello), 07-I-SO (Melle) and 079 I-SE (Venasca).

