

AperTO - Archivio Istituzionale Open Access dell'Università di Torino

**Expression of AP-2a, AP-2g and ESDN in primary melanomas:  
Correlation with histopathological features and potential  
prognostic value**

**This is the author's manuscript**

*Original Citation:*

*Availability:*

This version is available <http://hdl.handle.net/2318/123408> since

*Terms of use:*

Open Access

Anyone can freely access the full text of works made available as "Open Access". Works made available under a Creative Commons license can be used according to the terms and conditions of said license. Use of all other works requires consent of the right holder (author or publisher) if not exempted from copyright protection by the applicable law.

(Article begins on next page)



## UNIVERSITÀ DEGLI STUDI DI TORINO

This Accepted Author Manuscript (AAM) is copyrighted and published by Elsevier. It is posted here by agreement between Elsevier and the University of Turin. Changes resulting from the publishing process - such as editing, corrections, structural formatting, and other quality control mechanisms - may not be reflected in this version of the text. The definitive version of the text was subsequently published in

Journal of Dermatological Science

Volume 68, Issue 3, December 2012, Pages 202–204

Expression of AP-2 $\alpha$ , AP-2 $\gamma$  and ESDN in primary melanomas: Correlation with histopathological features and potential prognostic value

Simona Osella-Abatea, (Corresponding author), Mauro Novellia, Pietro Quaglino, Francesca Orsob, Benedetta Ubeziob, Carlo Tomasinic, Ester Berardengoc, Maria Grazia Bernengoa, Daniela Tavernab

<http://dx.doi.org/10.1016/j.jdermsci.2012.09.008>

You may download, copy and otherwise use the AAM for non-commercial purposes provided that your license is limited by the following restrictions:

- (1) You may use this AAM for non-commercial purposes only under the terms of the CC-BY-NC-ND license.
- (2) The integrity of the work and identification of the author, copyright owner, and publisher must be preserved in any copy.
- (3) You must attribute this AAM in the following format: Creative Commons BY-NC-ND license (<http://creativecommons.org/licenses/by-nc-nd/4.0/deed.en>),

<http://www.sciencedirect.com.offcampus.dam.unito.it/science/article/pii/S0923181112002721>

Letter to the Editor

Expression of AP-2 $\alpha$ , AP-2 $\gamma$  and ESDN in primary melanomas: Correlation with histopathological features and potential prognostic value

Simona Osella-Abatea, (Corresponding author), Mauro Novellia, Pietro Quaglino, Francesca Orsob, Benedetta Ubeziob, Carlo Tomasinic, Ester Berardengoc, Maria Grazia Bernengoa, Daniela Tavernab

<http://dx.doi.org/10.1016/j.jdermsci.2012.09.008>

Keywords: ESDN; AP-2alpha; AP-2gamma; Melanoma; DFS

To the Editor

Melanoma is characterized by increasing trends of incidence and high metastatic potential [1]. The transition from non-invasive to invasive and metastatic stage is characterized by a multi-step process by which tumour cells acquire the ability to detach and invade adjacent tissues. Loss of the transcription factor activator protein-2 $\alpha$  (AP-2 $\alpha$ ) is an important molecular event in melanoma progression resulting in deregulation of AP-2 target genes involved in tumour growth and metastasis and associated with short Disease-Free-Survival (DFS) [2] and [3]. Our recent investigations on different tumour cells including melanoma [4], [5] and [6] provided evidence that not only AP-2 $\alpha$  but also AP-2 $\gamma$  play an essential role in tumorigenesis by modulating specific genes such as Endothelial and Smooth muscle cell Derived Neuropilin-like molecule (ESDN) [7]. So far, no data are available regarding AP-2 $\gamma$  and ESDN expression in primary melanoma lesions. Therefore, we analysed the expression of these two genes in primary melanomas, to understand their relationships as well as their connection with AP-2 $\alpha$  expression and melanoma clinico-pathological features.

We included 67 patients stage 0 to II (AJCC classification); patients with evidence of metastatic involvement at first diagnosis, including positive sentinel lymph node biopsy (SLNB) were excluded. The study was approved by the Hospital Ethical Committee. Melanoma samples were subdivided according to Breslow thickness based on AJCC classification: 20 in situ and 47 invasive ( $\leq 1$  mm: 25;  $>1 - \leq 2$  mm: 9;  $>2 - \leq 4$  mm: 10;  $>4$  mm: 3).

All patients with invasive melanomas had regular follow-up visits (median follow-up 4.9 years, range: 1.1–11.1). One progression localised to regional lymph nodes occurred in a patient with melanoma  $<1$  mm not previously treated by SLNB; 13 progressions occurred in patients with melanoma  $>1$  mm (6 nodes, 5 “in transit” and 2 distant). Four out of 6 patients developed nodal recurrence in the same basin of previously negative SLNB (“false-negative”) and 2 in another regional basin.

AP-2 $\alpha$ , AP-2 $\gamma$  and ESDN expression was analysed immunohistochemically on paraffin tumour sections (AP-2 $\alpha$ , C-18; 1:150; Santa Cruz; DCBLD2-ESDN, 1:50; Sigma; AP-2 $\gamma$ , 1:50; Bioworld Technology). The number of positive melanoma cells were scored in two categories: score 0  $\leq$  30% or score 1 > 30% positive nuclei. Univariate/multivariate logistic regression were used to evaluate the significance of the predictor variables' association with DFS. In situ melanomas were excluded from DFS analyses.

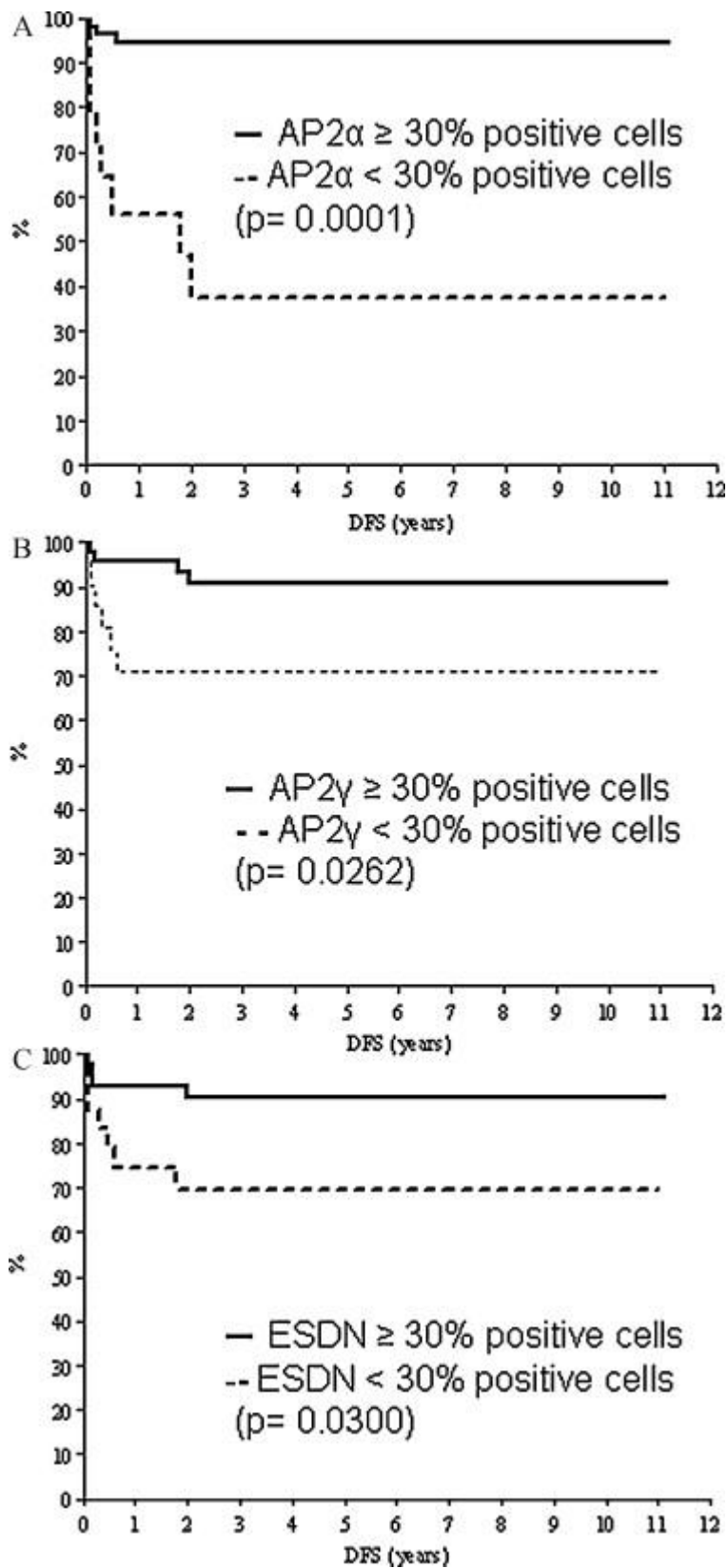
Significant differences were found for marker expression according to tumor thickness. In situ melanomas had a high expression of all markers. In invasive melanomas, a progressive down-regulation of AP-2 $\alpha$ , AP-2 $\gamma$  and ESDN expression was observed, which inversely correlated with increase thickness. Indeed, the large majority of thin melanomas ( $\leq$ 1 mm) expressed the three markers on more than 30% of tumour cells (AP-2 $\alpha$ : 22/2; AP-2 $\gamma$ : 21/25; ESDN: 22/25); on the contrary, the majority of thick melanomas showed significantly lower AP-2 $\alpha$ , AP-2 $\gamma$  and ESDN expression ( $\chi^2$ : p = 0.022 for AP-2 $\alpha$ , p < 0.001 for AP-2 $\gamma$  and p < 0.001 for ESDN). ( Table 1) AP-2 $\alpha$ , AP-2 $\gamma$  and ESDN expression was also related to other histopathological unfavourable features. Univariate logistic regression showed that a low expression of AP-2 $\alpha$ , AP-2 $\gamma$  and ESDN was associated with increased vascularity (odds-ratio (OR) 5.77 for AP-2 $\alpha$ , 5.14 for AP-2 $\gamma$  and 3.14 for ESDN expression <30% positive melanoma cells), vascular invasion (OR 12.8 for AP-2 $\alpha$ , 17.34 for ESDN and 52.8 for AP-2 $\gamma$ ) and mitotic rate (OR 16.33 for AP-2 $\alpha$ , 17.9 for AP-2 $\gamma$  and 14.64 for ESDN expression).

**Table 1.** AP-2 $\alpha$ , AP-2 $\gamma$  and ESDN expression in primary melanoma and skin metastasis.

Protein analysed	% Positive cells	In situ tumours	Invasive tumours Breslow thickness (mm)				P value	Skin metastases
			$\leq$ 1	1.01–2	2.01–4	>4		
AP-2 $\alpha$	<30%	0	3	3	6	2	0.0022	8
	$\geq$ 30%	20	22	6	4	1		2
AP-2 $\gamma$	<30%	3	4	7	10	3	<0.001	8
	$\geq$ 30%	17	21	2	0	0		2
ESDN	<30%	5	3	4	9	3	<0.001	6
	$\geq$ 30%	15	22	5	1	0		4

Univariate analyses showed that a shorter DFS is associated with a low expression of AP-2 $\alpha$  (5-year DFS 33.3% vs 90.9%, p < 0.001), AP-2 $\gamma$  (57.9% vs 85.6%, p = 0.0233) and ESDN (57.4% vs 85.6%, p = 0.0298) ( Fig. 1). The Hazard Rate (HR) was 10.00 for AP-2 $\alpha$  (p = 0.0006), 3.65 for AP-2 $\gamma$  (p = 0.0351) and 3.44 for ESDN <30% positive cells (p = 0.0439).

**Fig. 1.** Correlation of AP-2 $\alpha$  (A), AP-2 $\gamma$  (B) and ESDN (C) expression with disease free survival (DFS) in primary melanoma lesions.



To support the relationship between AP-2 family/ESDN down-regulation and melanoma metastatic potentialities, we investigated the expression of these markers in 10 archival specimens from skin melanoma metastases, 5 corresponding to patients included in the study who developed “in transit” localisations and 5 from other unrelated cases. A low expression of AP-2 $\alpha$ , AP-2 $\gamma$  and ESDN was observed in the majority of cases (Table 1).

Conflicting data are reported for AP-2 $\alpha$ , AP-2 $\gamma$  and ESDN expression in other cancers. In colorectal carcinoma, cytoplasmic AP-2 $\alpha$  expression was reduced in advanced Dukes's stage tumours whilst AP-2 $\alpha$  and AP-2 $\gamma$  were inversely related to histological grade [8]. Low AP-2 expression was associated with disease progression in breast cancer [9]. ESDN was up-regulated in the highly metastatic compared with parental cells in lung cancer [7], whereas a study on gastric cancer correlated loss of ESDN expression with increased tumour proliferation [10]. The mechanism of ESDN expression is still poorly understood. We previously identified a direct relationship between AP-2 family and ESDN regulation in both vitro and animal melanomas [4], providing evidences that AP-2 $\alpha$ /AP-2 $\gamma$  regulate tumour growth, chemotherapy induced cell death, as well as migration and invasion via specific genetic programs. Furthermore, the analysis of gene expression in HeLa cells lacking AP-2 $\alpha$  demonstrated that ESDN was among the major candidates for this molecular mechanism [4].

The concomitant loss of AP-2 $\alpha$ , AP-2 $\gamma$  and ESDN in primary melanoma supports preliminary evidence about ESDN regulation by the AP-2 family in human melanomas, suggesting a modulation between these genes and thus confirming our previous findings [4] and [5]. The relevance of these alterations in the metastatic pathways is underlined by the skin metastasis pattern expression.

In conclusion, despite the relatively low number of patients, this study demonstrates for the first time that ESDN and AP-2 $\gamma$  expression is lower in thick melanomas, it is associated with unfavourable histopathological parameters (increased vascularity, vascular invasion and mitoses) and correlates with a shorter DFS like for AP-2 $\alpha$ .

## References

- [1] C.M. Balch, J.E. Gershenwald, S.J. Soong, J.F. Thompson, M.B. Atkins, D.R. Byrd et al. Final version of 2009 AJCC melanoma staging and classification. *J Clin Oncol*, 27 (36) (2009), pp. 6199–6206
- [2] J.M. Karjalainen, J.K. Kellokoski, A.J. Mannermaa, H.E. Kujala, K.I. Moisio, P.J. Mitchell et al. Failure in post-transcriptional processing is a possible inactivation mechanism of AP-2 $\alpha$  in cutaneous melanoma *Br J Cancer*, 82 (12) (2000), pp. 2015–2021
- [3] M. Bar-Eli Gene regulation in melanoma progression by the AP-2 transcription factor. *Pigment Cell Res*, 14 (2) (2001), pp. 78–85
- [4] F. Orso, E. Penna, D. Cimino, E. Astanina, F. Maione, D. Valdembri et al. AP-2 $\alpha$  and AP-2 $\gamma$  regulate tumor progression via specific genetic programs *FASEB J*, 22 (8) (2008), pp. 2702–2714
- [5] F. Orso, D. Corà, B. Ubezio, P. Provero, M. Caselle, D. Taverna Identification of functional TFAP2A and SP1 binding sites in new TFAP2A-modulated genes *BMC Genomics*, 11 (2010), p. 355

- [6] E. Penna, F. Orso, D. Cimino, E. Tenaglia, A. Lembo, E. Quaglino et al. microRNA-214 contributes to melanoma tumour progression through suppression of TFAP2C EMBO J, 30 (10) (2011), pp. 1990–2007
- [7] H. Nagai, N. Sugito, H. Matsubara, Y. Tatematsu, T. Hida, Y. Sekido et al. CLCP1 interacts with semaphorin 4B and regulates motility of lung cancer cells Oncogene, 26 (27) (2007), pp. 4025–4031
- [8] K.M. Ropponen, J.K. Kellokoski, R.T. Pirinen, K.I. Moisio, M.J. Eskelinen, E.M. Alhava et al. Expression of transcription factor AP-2 in colorectal adenomas and adenocarcinomas; comparison of immunohistochemistry and in situ hybridisation J Clin Pathol, 54 (2001), pp. 533–538
- [9] J. Pellikainen, V. Kataja, K. Ropponen, J. Kellokoski, T. Pietiläinen, J. Böhm et al. Reduced nuclear expression of transcription factor AP-2 associates with aggressive breast cancer Clin Cancer Res, 8 (2002), pp. 3487–3495
- [10] M. Kim, K.T. Lee, H.R. Jang, J.H. Kim, S.M. Noh, K.S. Song et al. Epigenetic down-regulation and suppressive role of DCBLD2 in gastric cancer cell proliferation and invasion Mol Cancer Res, 6 (2008), pp. 222–230

#### Corresponding author contact information

Corresponding author at: Department of Medical Sciences and Human Oncology, Dermatologic Clinic, University of Turin, Via Cherasco 23, 10126 Turin, Italy. Tel.: +39 011 6335816; fax: +39 011 674034.