

AperTO - Archivio Istituzionale Open Access dell'Università di Torino

MGMT promoter methylation in plasma of glioma patients receiving temozolomide.

This is the author's manuscript

Original Citation:

Availability:

This version is available <http://hdl.handle.net/2318/148065> since

Published version:

DOI:10.1007/s11060-014-1395-4

Terms of use:

Open Access

Anyone can freely access the full text of works made available as "Open Access". Works made available under a Creative Commons license can be used according to the terms and conditions of said license. Use of all other works requires consent of the right holder (author or publisher) if not exempted from copyright protection by the applicable law.

(Article begins on next page)



UNIVERSITÀ DEGLI STUDI DI TORINO

The final publication is available at Springer via <http://dx.doi.org/10.1007/s11060-014-1395-4>

1 **MGMT PROMOTER METHYLATION IN PLASMA OF GLIOMA PATIENTS**
2 **RECEIVING TEMOZOLOMIDE**

3
4
5
6
7 4 Valentina Fiano*, Morena Trevisan, Elisa Trevisan, Rebecca Senetta, Anna Castiglione,
8
9
10 5 Carlotta Sacerdote, Anna Gillio-Tos, Laura De Marco, Chiara Grasso, Michela Magistrello,
11
12 6 Fabrizio Tondat, Roberta Rudà, Paola Cassoni, Riccardo Soffietti, Franco Merletti
13

14
15
16
17 8 *Running Title: MGMT methylation in serial glioma plasma samples*
18

19 9
20
21
22 10 Unit of Cancer Epidemiology – CERMS, Department of Medical Sciences, University of
23
24 11 Turin, Città della Salute e della Scienza Hospital, Via Santena 7, 10126 Turin, Italy (V.F.,
25
26 12 M.T., A.C., C.S., A. GT., L. DM., C.G., F.M.)
27

28
29 13 Department of Neuroscience, Division of Neuro-Oncology, University of Turin and Città
30
31 14 della Salute e della Scienza Hospital, Via Cherasco 15, 10126 Turin, Italy (E.T., M.M., R.R.,
32
33 15 R.S.)
34

35
36 16 Department of Medical Sciences, University of Turin and Città della Salute e della Scienza
37
38 17 Hospital, Via Santena 7, 10126 Turin, Italy (R.S., P.C.)
39

40
41 18 Laboratory of Pathology – CERMS, Città della Salute e della Scienza Hospital, Via Santena
42
43 19 5, 10126 Turin, Italy (F.T.)
44

45
46 20
47
48 21 ***Corresponding author:** Valentina Fiano, Unit of Cancer Epidemiology – CERMS,
49
50 22 Department of Medical Sciences, University of Turin, Via Santena 7, 10126 Turin, Italy;
51
52 23 Tel.: +39 011 633 6863; Fax: +39 011 633 4664; E-mail: vfiano@hotmail.com
53

54
55
56 24
57
58
59
60
61
62
63
64
65

1 Abstract

2 Promoter methylation of the O6-methylguanine-DNA methyltransferase (MGMT) gene plays
3 a role in cellular response to alkylating agents. In the present study aimed to: i) evaluate the
4 concordance between MGMT promoter methylation status in tumor tissue and plasma; ii)
5 monitor MGMT promoter methylation status in plasma taken before and during
6 temozolomide treatment; iii) explore the value of MGMT promoter methylation status in
7 plasma as a prognostic/predictive biomarker in glioma patients.

8 We enrolled 58 patients with histologically confirmed glioma at different grades of
9 malignancy. All patients underwent surgical resection and temozolomide treatment. Paraffin-
10 embedded tumor tissue was available for 48 patients. Blood samples were collected from all
11 patients before temozolomide treatment (baseline) and at each MRI examination for a 12-
12 month period. MGMT promoter methylation status was assessed in both sample types by real
13 time PCR with a specific probe.

14 The frequency of MGMT promoter methylation was 60.4% in tumor tissue and 41.38% in
15 plasma. MGMT promoter methylation status was concordant in the two sample types
16 (Kappa=0.75, 95% confidence interval [CI] 0.57-0.93; p-value <0.001). Overall and
17 progression-free survival were longer in patients with methylated MGMT promoter.
18 Mortality was higher in patients with unmethylated MGMT promoter, whether in tumor
19 tissue (hazard ratio [HR]: 2.21; 95% CI 0.99-4.95) or plasma (HR: 2.19; 95% CI 1.02-4.68).
20 Progression-free survival was shorter in patients with unmethylated MGMT promoter,
21 whether in tissue (HR: 2.30; 95% CI 1.19-4.45) or plasma (HR: 1.77; 95% CI 0.95-3.30).

22 The cumulative incidence of unmethylated MGMT promoter in plasma at baseline was 58%,
23 and reached virtually 100% at 12 months. In conclusion MGMT promoter methylation status
24 in tumor tissue and plasma was highly concordant, and both were associated with longer
25 survival, supporting the role of the detection of methylated MGMT promoter in predicting

1
2
3
4
5
6
7
8
9
10
11
12
13
14
15
16
17
18
19
20
21
22
23
24
25
26
27
28
29
30
31
32
33
34
35
36
37
38
39
40
41
42
43
44
45
46
47
48
49
50
51
52
53
54
55
56
57
58
59
60
61
62
63
64
65

1 treatment response. However we suggest caution in using plasma as a surrogate of tumor
2 tissue due to possible false-negative results.

3

4

5 **Keywords:** Glioma, plasma DNA, MGMT, methylation, temozolomide

6

1 Introduction

2 Gliomas are the most common type of primary brain tumor in adults, with a standardized
3 incidence in Europe of 6/100,000 person-years, and a peak of 18.5/100,000 person-years in
4 people over 65 years of age [1]. Despite recent advances in the treatment of gliomas, such as
5 surgical resection, radiotherapy, and chemotherapy with alkylating agents (e.g.
6 temozolomide, nitrosoureas), treatment response varies considerably, and the prognosis of
7 glioma patients remains poor [2-4].

8 Temozolomide treatment, in particular, causes DNA damage and cell death through the
9 alkylation of the O6 position of guanine. The DNA damage is repaired by the O6-
10 methylguanine-DNA methyltransferase (MGMT) protein, which is ubiquitously expressed in
11 normal human tissue. Epigenetic silencing of the MGMT gene through methylation of
12 promoter CpGs impairs DNA repair and has been associated with better treatment response,
13 and longer survival in patients with high-grade glioma who received chemotherapy with
14 alkylating agents [2-12]. Thus, MGMT promoter methylation status may be used as a
15 predictive biomarker to identify patients with a higher probability of positive response to
16 temozolomide treatment [4-14]. Conversely, few data are available on low-grade gliomas
17 [15-16].

18 Recent studies have shown that MGMT promoter methylation status can be detected in
19 both tumor tissue and circulating DNA from the serum/plasma of glioma patients [17-20].
20 The rate of concordance in MGMT promoter methylation status between the two sample
21 types varies, but is consistent with studies on other cancer types (breast [21], renal [22], lung
22 [23], colorectal [24]), and suggests that MGMT promoter methylation status in circulating
23 DNA is a reliable tool to determine tumor methylation status.

24 Tissue samples of patients with glioblastoma who have undergone multiple surgical
25 resections may show changes in MGMT promoter methylation status over time [25]; changes

1 have been described more frequently in MGMT methylated than in unmethylated cases [26].

2 Conversely, there are currently no studies investigating MGMT methylation status in the
3 circulating DNA of glioma patients during treatment, or the clinical correlations of this status.

4 In the present study we aimed to: i) evaluate the agreement between MGMT methylation
5 status in tumor tissue and plasma; ii) monitor MGMT methylation status in plasma before and
6 during temozolomide treatment; iii) explore the value of MGMT promoter methylation status
7 in plasma as a prognostic/predictive marker in glioma patients.

9 **Material and Methods**

10 *Study population and biological samples*

11 The study included patients who were referred to the Division of Neuro-Oncology of the
12 Città della Salute e della Scienza Hospital in Turin, Italy between April 2008 and November
13 2011. Patients with a histologically confirmed diagnosis of glioma at different grades of
14 malignancy, and a treatment protocol that included temozolomide and magnetic resonance
15 imaging (MRI) examination every 3 months were invited to participate. In total 58 patients
16 accepted to participate in the study.

17 The same paraffin-embedded tumor tissues used by the Neurological Ward for
18 histological testing were used in the present analysis. Of the included patients 48 out of 58
19 had tumor tissue available for additional laboratory analyses. Blood samples were collected
20 from all patients before temozolomide treatment (baseline) and at each subsequent MRI
21 examination for a 12-month period.

22 All included patients signed an informed consent form for the DNA analysis of their
23 tumor tissue and blood samples. The study protocol was approved by the local ethical
24 committee.

1 ***Treatment regimens***

2 Patients with glioblastoma received conventional radiotherapy with concomitant and adjuvant
3 temozolomide treatment (1 cycle=150-200 mg/m² daily for 5 days) every 28 days for up to
4 12 months, or until evidence of tumor progression or unacceptable toxicity. Patients with
5 grade III gliomas received conventional radiotherapy and up to 12 cycles of adjuvant
6 temozolomide treatment. Patients with grade II gliomas with a residual or progressive tumor
7 after surgical resection received 12 cycles of temozolomide treatment. Some patients were
8 treated with up to 12 cycles of dose-dense temozolomide (150mg/m²/daily 1 week ON-1
9 week OFF).

10

11 ***DNA extraction***

12 Genomic DNA was extracted and purified from 3-5 (10 µm thick) sequential sections of
13 paraffin embedded tumor tissue using the QIAamp® DNA FFPE Tissue Kit (Qiagen, Hilden,
14 Germany). Circulating DNA was extracted from plasma using the QIAamp DNA Blood Mini
15 kit (Qiagen).

16

17 ***Methylation analysis***

18 Extracted DNA underwent bisulfite modification using the Epiect Bisulfite Kit (Qiagen).
19 Positive controls for methylated MGMT promoter (CpGenome™ universal methylated
20 DNA, Chemicon Co., Billerica, MA, USA) and unmethylated MGMT promoter
21 (CpGenome™ universal unmethylated DNA, Chemicon Co.) were included in each
22 modification set.

23 After bisulfite modification, an end point PCR assay, using primers specific to either
24 methylated or unmethylated DNA, was used to determine MGMT promoter methylation
25 status. Primer sequences of MGMT were chosen according to published sequences [27, 28]

1 and were as follows for the unmethylated reaction: forward 5'-
2 TTGTGTTTTGATGTTTGTAGGTTTTTGT-3' and reverse 5'-
3 AACTCCACACTCTTCCAAAAACAAAACA-3'; and for the methylated reaction: forward
4 5'-TTTCGACGTTTCGTAGGTTTTTCGC-3' and reverse 5'-
5 GCACTCTTCCGAAAACGAAACG-3'.

6 Each PCR reaction contained: 1 x Buffer, 2 mM MgCl₂, 0.8 mM dNTPs, 500 nM of
7 primers for methylated and unmethylated, 5 U Taq, 4 µl of and 10 µl of modified DNA for
8 tumor tissue and plasma, respectively, and distilled water to obtain a final volume of 25 µl.
9 The reaction was carried out under the following PCR conditions: 10 minutes at 95°C, 1
10 minute at 95°C, 1 minute at 59°C, 1 minute at 72°C for 45 cycles, and 10 minutes at 72°C.
11 To increase the sensitivity, a second round of PCR assays with a specific probe for
12 methylated DNA was performed using 1 µl of the first PCR product for tumor tissue, and 3 µl
13 for plasma. The methylated probe was chosen according to the following published sequence,
14 which targeted five CpG islands in the amplified region: FAM-
15 CGCAAACGATACGCACCGCGA-BHQ1 [28].

16 Each PCR reaction contained: 1 x iQ Super Mix, 600 nM of primers, 200 nM of specific
17 probe for MGMT promoter methylated, modified DNA and distilled water to obtain a final
18 volume of 25 µl. The reaction was carried out in a Real Time thermocycler (iCycler, BioRad,
19 Hercules, CA, USA) under the following PCR conditions: 1.30 minutes at 95°C, 15 seconds
20 at 95°C, 1 minute at a primer-specific annealing temperature (60°C) for 50 cycles, and 10
21 minutes at 72°C. The universal methylated DNA CpGenome was used as a positive control.
22 Negative controls were included in all reactions.

23
24
25

1 ***Statistical analysis***

2 The clinical characteristics of patients at baseline were described by absolute and percentage
3 frequencies according to tumor grade. To assess the agreement between MGMT promoter
4 methylation status in tumor tissue and plasma, we used the Kappa-statistic. Overall survival
5 was defined as survival between the time of blood sample collection at baseline and the date
6 of death or the date of last follow-up. Progression-free survival was defined as survival
7 between blood sample collection at baseline and the date of tumor progression or death.

8 We performed a Log-rank test to evaluate the equality of survivor functions according to
9 MGMT promoter methylation status. Univariate and multivariate hazard ratios (HRs) of
10 patient characteristics at baseline were estimated using Cox proportional hazard regression
11 models. To explore the prognostic/predictive value of MGMT promoter methylation status,
12 we considered two sets of variables that differed only in the sample type used to determine
13 MGMT promoter methylation status: in model 1 we included MGMT promoter methylation
14 status in tumor tissue, tumor grade and age; in model 2 we included MGMT promoter
15 methylation status in plasma at baseline, tumor grade and age. As a sensitivity analysis, we
16 assessed the concordance in MGMT promoter methylation status between tumor tissue and
17 plasma, and evaluated overall and progression-free survival according to MGMT promoter
18 methylation status in patients with high-grade gliomas (grade III glioma and glioblastoma)
19 alone, and in patients with glioblastoma alone. To estimate HRs we performed Cox's
20 proportional hazard regression in patients with high-grade gliomas alone and in glioblastoma
21 alone. Because of the small sample size we evaluated only univariate estimates.

1 Results

2 The characteristics of the 58 patients are shown in Table 1. Paraffin-embedded tumor tissue
3 was available for 48 out of 58 patients. We obtained an average of 129.5 ng/ μ L of DNA in
4 tumor tissue (range 31.2-382.8 ng/ μ L) and 7.7 ng/ μ L of circulating DNA in plasma (range
5 5.6-11 ng/ μ L). We found similar amounts of circulating DNA in the 12 (20.7%) patients who
6 underwent subtotal/total resection (7.3 ng/ μ L) and in the 46 (79.3%) patients with partial
7 resection (7.0 ng/ μ L). Methylated MGMT promoter was found in the tumor tissue of 29 out
8 of 48 (60.4%) patients with tumor tissue available, and in plasma at baseline of 24 out of 58
9 (41.4%) patients.

10 MGMT promoter methylation status was concordant in the tumor tissue and plasma at
11 baseline of 42 out of 48 patients (87.5%, Kappa=0.75, 95% CI 0.57-0.93) (Table 2). When
12 the analysis was performed for high-grade gliomas alone, we obtained a 92.5% agreement
13 and Kappa=0.85 (95% CI 0.69-1.00), while for glioblastomas alone we obtained 93.7%
14 agreement and Kappa=0.87 (95% CI 0.70-1.00).

15 Overall survival was significantly longer for patients with methylated MGMT promoter
16 in tumor tissue compared to those with unmethylated MGMT promoter in tumor tissue (p-
17 value 0.046) (Fig. 1A). A similar trend was observed when we performed separate sensitivity
18 analyses on high-grade gliomas alone (8 grade III gliomas and 32 grade glioblastomas), (p-
19 value 0.142) (Fig. 1B) and on glioblastomas alone (p-value 0.198) (Fig.1C), though it was not
20 statistically significant. We could not analyze low-grade gliomas separately due to the small
21 sample size. When we considered MGMT promoter methylation status in plasma at baseline
22 we found similar results for all patients (p-value 0.262) (Fig. 2A), for high-grade gliomas
23 alone (11 grade III and 35 grade IV) (p-value 0.096) (Fig. 2B) and for glioblastomas alone (p-
24 value 0.035) (Fig. 2C).

1 The adjusted mortality risk was higher in patients with unmethylated MGMT promoter in
2 tumor tissue (adjusted HR: 2.21, 95% CI 0.99-4.95) and plasma at baseline (adjusted HR:
3 2.19, 95% CI 1.02-4.68) (Table 3). When we considered the unadjusted mortality risk in
4 patients with high-grade gliomas and glioblastomas separately, the same trend was observed
5 (tumor tissue HR: 1.83, 95% CI 0.81-4.16 and HR: 1.80, 95% CI 0.73-4.45 for high-grade
6 gliomas and glioblastomas, respectively; plasma at baseline HR: 1.90, 95% CI 0.88-4.10 and
7 HR: 2.51, 95% CI 1.04-6.07, for high-grade gliomas and glioblastomas, respectively).

8 Progression-free survival also was longer for all glioma patients with methylated MGMT
9 promoter than for those with unmethylated MGMT promoter in tumor tissue (p-value 0.004)
10 (Fig. 3A). Sensitivity analyses on high-grade glioma patients alone (p-value 0.022) (Fig. 3B)
11 and glioblastoma patients alone (p-value 0.129) (Fig. 3C) confirmed this trend. MGMT
12 promoter methylation status in plasma at baseline for all three groups of patients (Fig. 4A, B,
13 C) showed similar results.

14 The risk of tumor progression was higher in patients with unmethylated MGMT promoter
15 in tumor tissue (adjusted HR: 2.30, 95% CI 1.19-4.45) and plasma (adjusted HR: 1.77, 95%
16 CI 0.95-3.30) (Table 4). When tumor progression was considered in patients with high-grade
17 gliomas alone, it was higher in patients with unmethylated MGMT promoter in tumor tissue
18 (unadjusted HR: 2.16, 95% CI 1.10-4.24) and in plasma at baseline (unadjusted HR: 1.61,
19 95% CI 0.86-3.02). The same trend was found for glioblastoma patients (HR: 1.79, 95% CI
20 0.84-3.81 and HR: 1.65, 95% CI 0.81-3.36 in tumor tissue and plasma at baseline,
21 respectively).

22 Cumulative incidence of MGMT promoter unmethylation in plasma was 58% at baseline
23 and reached 93.4% at 12 months. One patient was lost to follow-up, two died without
24 showing MGMT promoter unmethylation, and at 12 months one patient with methylated

1 MGMT promoter was still alive (Fig. 5). The cumulative incidence of MGMT promoter
2 unmethylation showed a similar pattern at 12 months when considering glioblastomas alone.

4 **Discussion**

5 MGMT promoter methylation is now considered a reliable predictive marker for survival in
6 glioma patients, who are treated with alkylating agents, such as temozolomide especially in
7 those with glioblastomas [7]. The association between hypermethylation of the MGMT gene
8 promoter in tumor tissue and improved outcome in terms of progression-free and overall
9 survival found in this study is significant, and is consistent with other studies [13,29,30].
10 Similarly to other cancers (i.e. colorectal [31], ovarian [32], prostate [33], lung [34] cancer),
11 it has been suggested that the detection of MGMT hypermethylation in the circulating DNA
12 of glioma patients represents a reliable tool to assess residual disease or disease progression
13 after temozolomide treatment [17-20]. Moreover, the assessment of MGMT promoter
14 methylation status in plasma could be useful when tumor tissue is of inadequate quantity or
15 quality (stereotactic biopsy specimens), or when this tissue is simply unavailable (inoperable
16 tumors). However, a systematic investigation of this molecular marker in the plasma of
17 glioma patients has not yet been performed.

18 In accordance with the published literature [17-20] we found a good agreement between
19 MGMT promoter methylation status in tumor tissue and plasma. The small discrepancy we
20 found in some patients (6/48) could be explained by the presence of circulating DNA derived
21 both from normal and tumor cells, or by the heterogeneity of tumors, for which genetically
22 different clones may coexist and differ in their ability to shed DNA [35]. We did not include
23 healthy controls, as the majority of the studies on this topic have reported methylated MGMT
24 promoter in a very low percentage of controls [21, 22, 27, 36].

1 Our results suggest that patients treated with temozolomide who show methylated
2 MGMT promoter in either tumor tissue or plasma have a longer overall survival and a better
3 progression-free survival. We investigated the possibility that MGMT promoter methylation
4 could affect the response to alkylating agents in all grades of gliomas, and we found a
5 similar trend in all the methylated patients, regardless of tumor grade. This suggests that
6 MGMT promoter methylation status could be a good predictor of response to temozolomide
7 treatment for patients with all grades of gliomas. When we performed separate analyses on
8 high-grade gliomas and glioblastomas, we observed results that were similar to those seen in
9 the entire case-series. When we performed separate analyses on patients with grade II and
10 grade III gliomas, we did not observe informative curves (data not shown) due to the small
11 size of these subgroups. Studies focused on low-grade gliomas with adequate sample sizes
12 are needed to confirm the benefit of MGMT promoter methylation that has been
13 demonstrated in other studies in this subgroup of patients [16, 37, 38].

14 MGMT promoter methylation in tumor tissue was associated with survival and
15 progression-free survival, which is in agreement with published literature [13,29,30];
16 unmethylated patients showed an increased risk of mortality and tumor progression. The
17 estimated effect of MGMT promoter methylation in tumor tissue was more consistent than
18 that in plasma; the HR of MGMT promoter methylation in tumor tissue did not change after
19 adjusting for tumor grade and age. These results suggest that MGMT promoter methylation in
20 tissue, but not in plasma, may be useful as an independent prognostic marker, which is in line
21 with previous evidence [13].

22 With our data it is not possible to draw final conclusions on methylation in plasma as a
23 predictor of tumor response to alkylating agents. The absence of a strong association between
24 MGMT promoter methylation in plasma and mortality could be in part due to the potential
25 for false-negative detection in plasma. Nevertheless, our results indicate that the detection of

1 methylated MGMT promoter in plasma has similar impact on response to treatment with
2 temozolomide as its detection in tumor tissue, leading to the suggestion that methylated
3 MGMT promoter methylation in plasma is predictive of a better response to therapy, and thus
4 could be used as a surrogate of methylation detection in tumor tissue. Conversely,
5 unmethylated MGMT promoter in plasma at baseline had no predictive value. To address
6 this, the use of other molecular markers or clinical features to predict response to treatment in
7 glioma patients must be investigated. Several studies on methylation in the plasma of patients
8 with different cancer types have reported conflicting results, indicating the need to combine
9 different methylation markers to reach an appropriate sensitivity [35, 39]. In particular the
10 detection of MGMT promoter methylation in the circulating DNA of patients with different
11 cancers has been performed using a variety of methods, [e.g., methylation-specific PCR
12 (MSP), quantitative MSP (QMSP), fluorescent MSP (F-MSP)], and this may be a reason for
13 the variability of results [21, 22, 27, 36, 40]. In our study we used an established primer pair
14 to evaluate MGMT methylation status, which is recommended in routine clinical settings [9];
15 moreover the average MGMT methylation in tissue was in line with published data.
16 However, critical issues in analyzing circulating DNA in terms of isolation, quantification,
17 origin, significance and functional meaning still persist. Sequencing and characterization
18 could increase the level of knowledge on this topic, as reported in a recent review [39], but
19 false-negative marker detection cannot be excluded.

20 In this study, the monitoring of MGMT promoter methylation in plasma showed that
21 almost all patients with methylated MGMT promoter at baseline (i.e. before treatment) had
22 unmethylated MGMT promoter within 12 months. A possible explanation, taking into
23 account that methylated and unmethylated foci may coexist [41], is that tumor cells with
24 MGMT promoter methylation are more sensitive to damage from temozolomide, which could
25 promote a selection of unmethylated tumor clones that are more resistant to alkylating agents.

1 A failure to detect a methylated signal due to significant lack of tumor tissue shedding DNA
2 in plasma is unlikely, considering that we obtained similar amounts of circulating DNA from
3 the plasma of serial blood samples. Other unknown biological mechanisms could also
4 contribute to the switch from methylated to unmethylated status. It is unlikely that the
5 potential for false-negative detection of MGMT promoter methylation in plasma during
6 treatment affected the overall trend of the cumulative incidence of unmethylation. Indeed, we
7 did not find any contrary switch from unmethylated to methylated status. Recent studies on
8 glioblastomas analyzed MGMT promoter methylation in paired tissue samples of original and
9 recurrent tumors after radio-chemotherapy, and observed that a proportion (61.5%) of
10 methylated tumors became unmethylated at tumor recurrence [26]. Conversely, Feldsberg et
11 al [42] found that the pattern of MGMT promoter methylation remained unchanged from
12 original tumor to recurrence, thus suggesting that testing for MGMT promoter methylation at
13 recurrence is unnecessary due to the development of alternative resistance mechanisms. We
14 could not perform an evaluation of the methylation status at tumor recurrence because no
15 cases of recurrence were observed during the 12-month follow-up period. We did not find
16 any association between histology and the probability of changing methylation status in
17 plasma, likely due to the few cases of low-grade gliomas present in our case-series compared
18 with the high proportion of grade III gliomas and glioblastomas.

19 The main limitation of our study is the small sample size, which hampered a meaningful
20 statistical analysis by tumor grade. Nevertheless, to our knowledge, this is the first study
21 evaluating MGMT promoter methylation status in plasma over time in glioma patients. Only
22 one recent study on prostate cancer evaluated plasma at baseline and at two time points
23 during chemotherapy [43]. Interestingly, these authors reported a trend in loss of methylation,
24 which is in line with our findings.

1 In conclusion, this study confirms that the presence of MGMT promoter methylation in
2 the plasma of glioma patients can reflect the methylation status in tumor tissue, and could
3 represents a good surrogate when adequate tumor tissue is not available for analysis.
4 However we suggest caution: when unmethylated MGMT promoter status in plasma is
5 detected, the use of a panel of different markers to increase sensitivity is advisable.
6 Moreover, we suggest that the analysis of MGMT promoter methylation in plasma could be
7 useful to monitor the follow-up of methylated patients. This approach could help to identify
8 when the tumor switches from methylated to unmethylated status, and thus the possible
9 emergence of treatment resistance.

11 **Acknowledgments**

12 The study was partially supported by the Compagnia di San Paolo/Firms and the Piedmont
13 Region.

15 **Conflict of interests**

16 The authors declare no conflict of interest.

1
2
3 **2 References**
4

- 5
6 3 1. Ferlay J, Shin HR, Bray F, Forman D, Mathers C, Parkin DM (2010) GLOBOCAN
7
8 4 2008: cancer incidence and mortality worldwide. IARC Press. Lyon, France. Available
9
10 5 from: <http://globocan.iarc.fr>.
11
12
13 6 2. Wick W, Weller M (2009) Classification and management of anaplastic gliomas. Curr
14
15 7 Opin Neurol 22:650-656.
16
17
18 8 3. Grossman SA, Ye X, Piantadosi S, Desideri S Nabors LB, Rosenfeld M, Fisher J.
19
20 9 NABTT CNS Consortium (2010) Survival of patients with newly diagnosed glioblastoma
21
22 10 treated with radiation and temozolomide in research studies in the United States. Clin
23
24 11 Cancer Res 16:2443-2449.
25
26
27 12 4. Rudà R, Trevisan E, Soffietti R (2012) Low-grade gliomas. Handb Clin Neurol
28
29 13 105:437-450.
30
31
32 14 5. Silber JR, Bobola MS, Blank A, Chamberlain MC (2012) O(6)-Methylguanine-DNA
33
34 15 methyltransferase in glioma therapy: Promise and problems. Biochim Biophys Acta
35
36 16 1826:71-82.
37
38
39 17 6. Stupp R, Hegi ME, Mason WP, van den Bent MJ, Taphoorn MJ, Janzer RC, Ludwin
40
41 18 SK, Allgeier A, Fisher B, Belanger K, Hau P, Brandes AA, Gijtenbeek J, Marosi C, Vecht
42
43 19 CJ, Mokhtari K, Wesseling P, Villa S, Eisenhauer E, Gorlia T, Weller M, Lacombe D,
44
45 20 Cairncross JG, Mirimanoff RO; European Organisation for Research and Treatment of
46
47 21 Cancer Brain Tumour and Radiation Oncology Groups; National Cancer Institute of Canada
48
49 22 Clinical Trials Group (2009) Effects of radiotherapy with concomitant and adjuvant
50
51 23 temozolomide versus radiotherapy alone on survival in glioblastoma in a randomised phase
52
53 24 III study: 5-year analysis of the EORTC-NCIC trial. Lancet Oncol 10:459-466.
54
55
56
57
58
59
60
61
62
63
64
65

1
2
3
4
5
6
7
8
9
10
11
12
13
14
15
16
17
18
19
20
21
22
23
24
25
26
27
28
29
30
31
32
33
34
35
36
37
38
39
40
41
42
43
44
45
46
47
48
49
50
51
52
53
54
55
56
57
58
59
60
61
62
63
64
65

7. Weller M, Stupp R, Hegi ME, van den Bent M, Tonn JC, Sanson M, Wick W, Reifenberger G (2012) Personalized care in neuro-oncology coming of age: why we need MGMT and 1p/19q testing for malignant glioma patients in clinical practice. *Neuro Oncol* 14(suppl):100-108.

8. Lechapt-Zalcman E, Levallet G, Dugué AE, Vital A, Diebold MD, Menei P, Colin P, Peruzzi P, Emery E, Bernaudin M, Chapon F, Guillo JM (2012) O(6)-methylguanine-DNA methyltransferase (MGMT) promoter methylation and low MGMT-encoded protein expression as prognostic markers in glioblastoma patients treated with biodegradable carmustine wafer implants after initial surgery followed by radiotherapy with concomitant and adjuvant temozolomide. *Cancer* 118:4545-4554.

9. Christians A, Hartmann C, Benner A, Meyer J, von Deimling A, Weller M, Wick W, Weiler M (2012) Prognostic value of three different methods of MGMT promoter methylation analysis in a prospective trial on newly diagnosed glioblastoma. *PLoS One* 7:e33449.

10. Watanabe R, Nakasu Y, Tashiro H, Mitsuya K, Ito I, Nakasu S, Nakajima T (2011) O6-methylguanine DNA methyltransferase expression in tumor cells predicts outcome of radiotherapy plus concomitant and adjuvant temozolomide therapy in patients with primary glioblastoma. *Brain Tumor Pathol* 28:127-135.

11. Wick W, Hartmann C, Engel C, Stoffels M, Felsberg J, Stockhammer F, Sabel MC, Koeppen S, Ketter R, Meyermann R, Rapp M, Meisner C, Kortmann RD, Pietsch T, Wiestler OD, Ernemann U, Bamberg M, Reifenberger G, von Deimling A, Weller M (2009) NOA-04 randomized phase III trial of sequential radiochemotherapy of anaplastic glioma with procarbazine, lomustine, and vincristine or temozolomide. *J Clin Oncol* 27:5874-5880.

12. Weller M, Felsberg J, Hartmann C, Berger H, Steinbach JP, Schramm J, Westphal M, Schackert G, Simon M, Tonn JC, Heese O, Krex D, Nikkhah G, Pietsch T, Wiestler O,

1
2
3
4
5
6
7
8
9
10
11
12
13
14
15
16
17
18
19
20
21
22
23
24
25
26
27
28
29
30
31
32
33
34
35
36
37
38
39
40
41
42
43
44
45
46
47
48
49
50
51
52
53
54
55
56
57
58
59
60
61
62
63
64
65

1 Reifenberger G, von Deimling A, Loeffler M (2009) Molecular predictors of progression-
2 free and overall survival in patients with newly diagnosed glioblastoma: a prospective
3 translational study of the German Glioma Network. *J Clin Oncol* 27:5743-5750.

4 13. Hegi ME, Diserens AC, Gorlia T, Hamou MF, de Tribolet N, Weller M, Kros JM,
5 Hainfellner JA, Mason W, Mariani L, Bromberg JE, Hau P, Mirimanoff RO, Cairncross JG,
6 Janzer RC, Stupp R (2005) MGMT Gene silencing and benefit from Temozolomide in
7 Glioblastoma. *N Engl J Med* 352:997-1003.

8 14. Thomas RP, Recht L, Nagpal S (2013) Advances in the management of glioblastoma:
9 the role of temozolomide and MGMT testing. *Clin Pharmacol* 5:1-9.

10 15. Everhard S, Kaloshi G, Crinière E, Benouaich-Amiel A, Lejeune J, Marie Y, Sanson
11 M, Kujas M, Mokhtari K, Hoang-Xuan K, Delattre JY, Thillet J (2006) MGMT
12 methylation: a marker of response to temozolomide in low-grade gliomas. *Ann Neurol*
13 60:740-743.

14 16. Ochsenbein AF, Schubert AD, Vassella E, Mariani L (2011) Quantitative analysis of
15 O6-methylguanine DNA methyltransferase (MGMT) promoter methylation in patients with
16 low-grade gliomas. *J Neurooncol* 103:343-351.

17 17. Balaña C, Ramirez JL, Taron M, Roussos Y, Ariza A, Ballester R, Sarries C, Mendez
18 P, Sanchez JJ, Rosell R (2003) O6-methyl-guanine-DNA methyltransferase methylation in
19 serum and tumor DNA predicts response to 1,3-bis(2-chloroethyl)-1-nitrosourea but not to
20 temozolamide plus cisplatin in glioblastoma multiforme. *Clin Cancer Res* 9:1461-1468.

21 18. Liu BL, Cheng JX, Zhang W, Zhang X, Wang R, Lin H, Huo JL, Cheng H (2010)
22 Quantitative detection of multiple gene promoter hypermethylation in tumor tissue, serum,
23 and cerebrospinal fluid predicts prognosis of malignant gliomas. *Neuro Oncol* 12:540-548.

- 1 19. Lavon I, Refael M, Zelikovitch B, Shalom E, Siegal T (2010) Serum DNA can define
2 tumor-specific genetic and epigenetic markers in gliomas of various grades. *Neuro Oncol*
3 12:173-180.
- 4 20. Balaña C, Carrato C, Ramírez JL, Cardona AF, Berdiel M, Sánchez JJ, Tarón M,
5 Hostalot C, Musulen E, Ariza A, Rosell R (2011) Tumour and serum MGMT promoter
6 methylation and protein expression in glioblastoma patients. *Clin Transl Oncol* 13:677-685.
- 7 21. Taback B, Giuliano AE, Lai R, Hansen N, Singer FR, Pantel K, Hoon DS (2006)
8 Epigenetic analysis of body fluids and tumor tissues: application of a comprehensive
9 molecular assessment for early-stage breast cancer patients. *Ann N Y Acad Sci* 1075:211-
10 221.
- 11 22. Hoque MO, Begum S, Topaloglu O, Jeronimo C, Mambo E, Westra WH, Califano
12 JA, Sidransky D (2004) Quantitative detection of promoter hypermethylation of multiple
13 genes in the tumor, urine, and serum DNA of patients with renal cancer. *Cancer Res*
14 64:5511-5517.
- 15 23. Zhang Y, Wang R, Song H, Huang G, Yi J, Zheng Y, Wang J, Chen L (2011)
16 Methylation of multiple genes as a candidate biomarker in non-small cell lung cancer.
17 *Cancer Lett* 303:21-28.
- 18 24. Lee BB, Lee EJ, Jung EH, Chun HK, Chang DK, Song SY, Park J, Kim DH (2009)
19 Aberrant methylation of APC, MGMT, RASSF2A, and Wif-1 genes in plasma as a
20 biomarker for early detection of colorectal cancer. *Clin Cancer Res* 15:6185-6191.
- 21 25. Parkinson JF, Wheeler HR, Clarkson A, McKenzie CA, Biggs MT, Little NS, Cook
22 RJ, Messina M, Robinson BG, McDonald KL (2008) Variation of O(6)-methylguanine-
23 DNA methyltransferase (MGMT) promoter methylation in serial samples in glioblastoma. *J*
24 *Neurooncol* 87:71-78.

1
2
3
4
5
6
7
8
9
10
11
12
13
14
15
16
17
18
19
20
21
22
23
24
25
26
27
28
29
30
31
32
33
34
35
36
37
38
39
40
41
42
43
44
45
46
47
48
49
50
51
52
53
54
55
56
57
58
59
60
61
62
63
64
65

26. Brandes AA, Franceschi E, Tosoni A, Bartolini S, Bacci A, Agati R, Ghimenton C, Turazzi S, Talacchi A, Skrap M, Marucci G, Volpin L, Morandi L, Pizzolitto S, Gardiman M, Andreoli A, Calbucci F, Ermani M (2010) O(6)-methylguanine DNA-methyltransferase methylation status can change between first surgery for newly diagnosed glioblastoma and second surgery for recurrence: clinical implications. *Neuro Oncol* 12:283-288.

27. Esteller M, Hamilton SR, Burger PC, Baylin SB, Herman JG (1999) Inactivation of the DNA repair gene O6-methylguanine-DNA methyltransferase by promoter hypermethylation is a common event in primary human neoplasia. *Cancer Res* 59:793-797.

28. Yegnasubramanian S, Kowalski J, Gonzalgo ML, Zahurak M, Piantadosi S, Walsh PC, Bova GS, De Marzo AM, Isaacs WB, Nelson WG (2004) Hypermethylation of CpG islands in primary and metastatic human prostate cancer. *Cancer Res* 64:1975-1986.

29. Wick W, Platten M, Meisner C, Felsberg J, Tabatabai G, Simon M, Nikkhah G, Papsdorf K, Steinbach JP, Sabel M, Combs SE, Vesper J, Braun C, Meixensberger J, Ketter R, Mayer-Steinacker R, Reifenberger G, Weller M; NOA-08 Study Group of Neuro-oncology Working Group (NOA) of German Cancer Society (2012) Temozolomide chemotherapy alone versus radiotherapy alone for malignant astrocytoma in the elderly: the NOA-08 randomised, phase 3 trial. *Lancet Oncol* 13:707-715.

30. Olson RA, Brastianos PK, Palma DA (2011) Prognostic and predictive value of epigenetic silencing of MGMT in patients with high grade gliomas: a systematic review and meta-analysis. *J Neurooncol* 105:325-335.

31. Lange CP, Campan M, Hinoue T, Schmitz RF, van der Meulen-de Jong AE, Slingerland H, Kok PJ, van Dijk CM, Weisenberger DJ, Shen H, Tollenaar RA, Laird PW (2012) Genome-scale discovery of DNA-methylation biomarkers for blood-based detection of colorectal cancer. *PLoS One* 7:e50266.

1 32. Liggett TE, Melnikov AA, Marks JR, Levenson VV (2011) Methylation patterns in
2 cell-free plasma DNA reflect removal of the primary tumor and drug treatment of breast
3 cancer patients. *Int J Cancer* 128:492-499.

4 33. Cortese R, Kwan A, Lalonde E, Bryzgunova O, Bondar A, Wu Y, Gordevicius J, Park
5 M, Oh G, Kaminsky Z, Tverkuviene J, Laurinavicius A, Jankevicius F, Sendorek DH,
6 Haider S, Wang SC, Jarmalaite S, Laktionov P, Boutros PC, Petronis A (2012) Epigenetic
7 markers of prostate cancer in plasma circulating DNA. *Hum Mol Genet* 21:3619-3631.

8 34. Ostrow KL, Hoque MO, Loyo M, Brait M, Greenberg A, Siegfried JM, Grandis JR,
9 Gaither Davis A, Bigbee WL, Rom W, Sidransky D (2010) Molecular analysis of plasma
10 DNA for the early detection of lung cancer by quantitative methylation-specific PCR. *Clin*
11 *Cancer Res* 16:3463-3472.

12 35. Fleischhacker M, Schmidt B (2007) Circulating nucleic acids (CNAs) and cancer--a
13 survey *Biochim Biophys Acta* 1775:181-232.

14 36. Yang HJ, Liu VW, Wang Y, Chan KY, Tsang PC, Khoo US, Cheung AN, Ngan HY
15 (2004) Detection of hypermethylated genes in tumor and plasma of cervical cancer patients.
16 *Gynecol Oncol* 93:435-440.

17 37. Leu S, von Felten S, Frank S, Vassella E, Vajtai I, Taylor E, Schulz M, Hutter G,
18 Hench J, Schucht P, Boulay JL, Mariani L (2013) IDH/MGMT-driven molecular
19 classification of low-grade glioma is a strong predictor for long-term survival. *Neuro Oncol*
20 15:469-479.

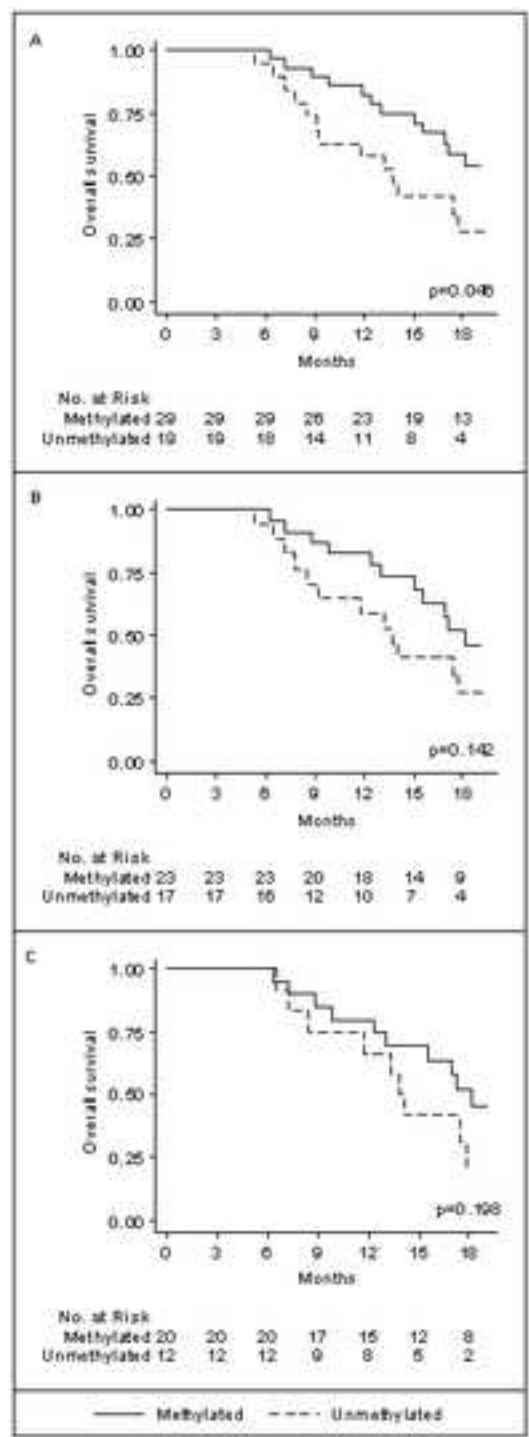
21 38. Kesari S, Schiff D, Drappatz J, LaFrankie D, Doherty L, Macklin EA, Muzikansky A,
22 Santagata S, Ligon KL, Norden AD, Ciampa A, Bradshaw J, Levy B, Radakovic G,
23 Ramakrishna N, Black PM, Wen PY (2009) Phase II of protracted daily temozolomide for
24 low grade gliomas in adult. *Clin Cancer Res* 15:330-337.

1 39. van der Vaart M, Pretorius PJ. (2010) Is the role of circulating DNA as a biomarker of
2 cancer being prematurely overrated? Clin Biochem 43:26-36.
3
4 40. Fujiwara K, Fujimoto N, Tabata M, Nishii K, Matsuo K, Hotta K, Kozuki T, Aoe M,
5 Kiura K, Ueoka H, Tanimoto M (2005) Identification of epigenetic aberrant promoter
6 methylation in serum DNA is useful for early detection of lung cancer. Clin Cancer Res
7 11:1219-1225.
8
9 41. Della Puppa A, Persano L, Masi G, Rampazzo E, Sinigaglia A, Pistollato F, Denaro L,
10 Barzon L, Palù G, Basso G, Scienza R, d'Avella D (2012) MGMT expression and promoter
11 methylation status may depend on the site of surgical sample collection within
12 glioblastoma: a possible pitfall in stratification of patients? J Neurooncol 106:33-41.
13
14 42. Felsberg J, Thon N, Eigenbrod S, Hentschel B, Sabel MC, Westphal M, Schackert G,
15 Kreth FW, Pietsch T, Löffler M, Weller M, Reifenberger G, Tonn JC; German Glioma
16 Network (2011) Promoter methylation and expression of MGMT and the DNA mismatch
17 repair genes MLH1, MSH2, MSH6 and PMS2 in paired primary and recurrent
18 glioblastomas. Int J Cancer 129:659-670.
19
20 43. Kwee S, Song MA, Cheng I, Loo L, Tiirikainen M (2012) Measurement of circulating
21 cell-free DNA in relation to 18F-fluorocholine PET/CT imaging in chemotherapy-treated
22 advanced prostate cancer. Clin Transl Sci 5:65-70.

1 Fig. 1 Overall survival by MGMT promoter methylation status in tumor tissue in all patients
2 (A), in high-grade glioma patients (B) and in glioblastoma patients (C)
3
4
5
6
7 Fig. 2 Overall survival by MGMT promoter methylation status in plasma at baseline in all
8 patients (A), in high-grade glioma patients (B) and in glioblastoma patients (C)
9
10
11
12
13
14 Fig. 3 Progression-free survival by MGMT promoter methylation status in tumor tissue in all
15 patients (A), in high-grade glioma patients (B) and in glioblastoma patients (C)
16
17
18
19
20
21
22 Fig. 4 Progression-free survival by MGMT promoter methylation status in plasma at baseline
23 in all patients (A), in high-grade glioma patients (B) and in glioblastoma patients (C)
24
25
26
27
28
29 Fig. 5 Cumulative incidence of MGMT promoter unmethylation in plasma
30
31
32
33
34
35
36
37
38
39
40
41
42
43
44
45
46
47
48
49
50
51
52
53
54
55
56
57
58
59
60
61
62
63
64
65

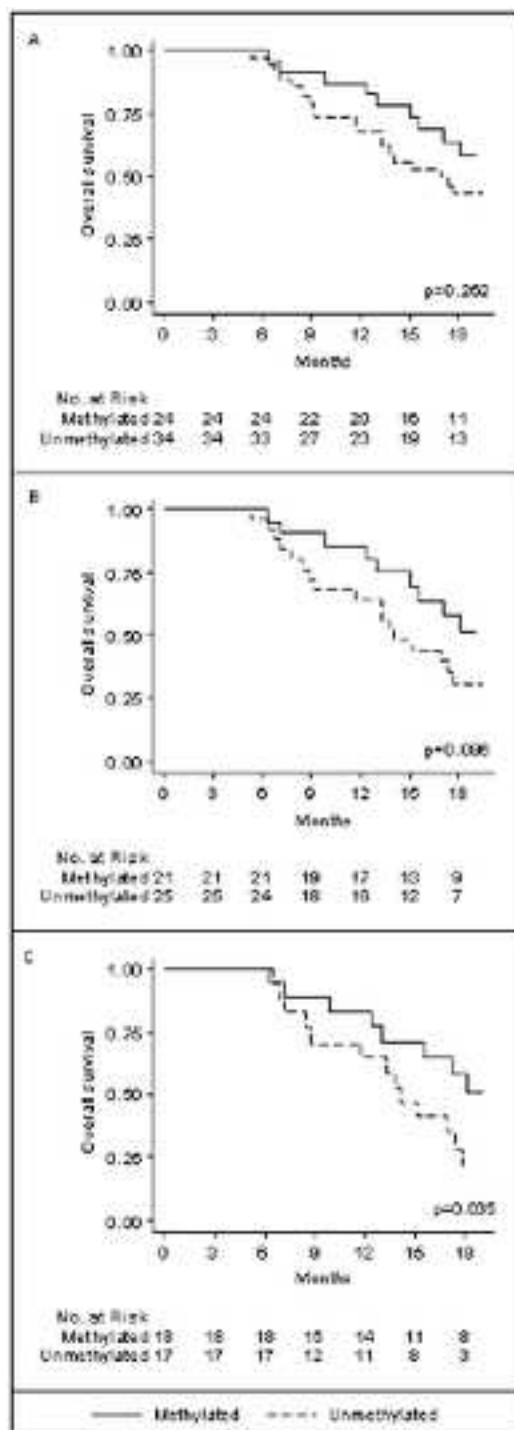
Figure

[Click here to download high resolution image](#)



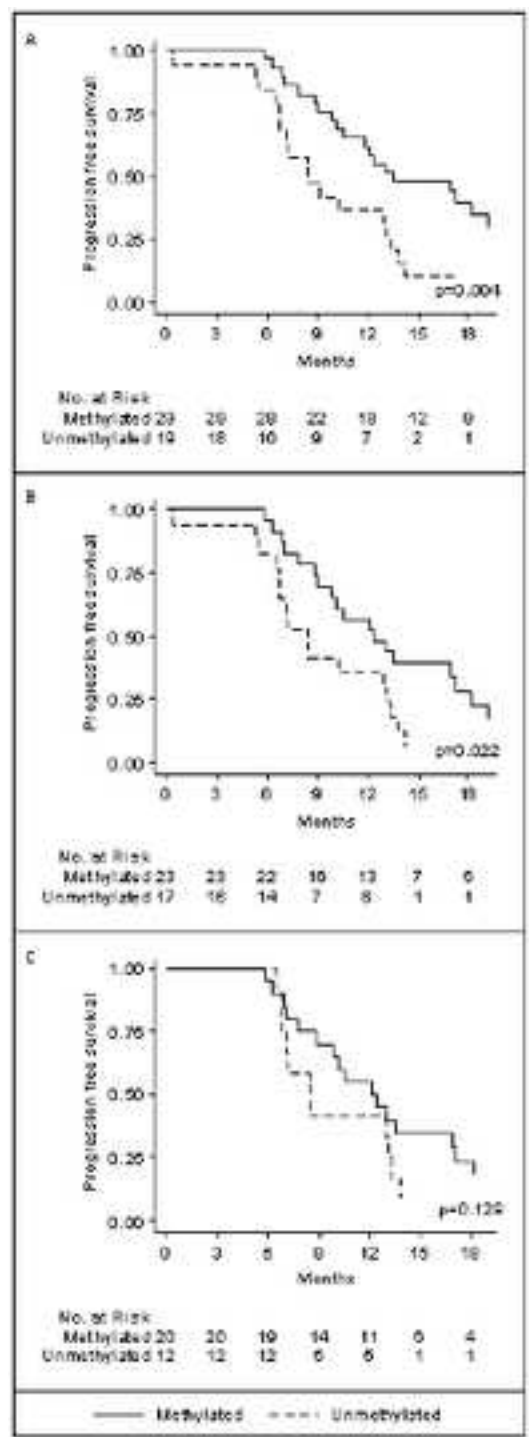
Figure

[Click here to download high resolution image](#)



Figure

[Click here to download high resolution image](#)



Figure

[Click here to download high resolution image](#)

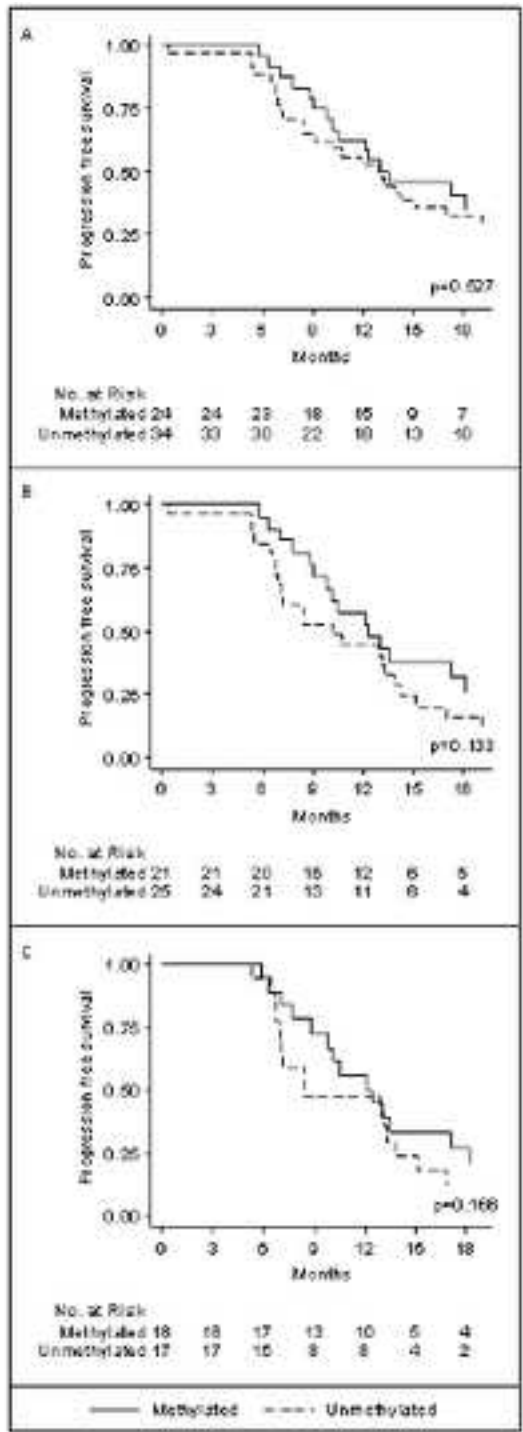


Figure
[Click here to download high resolution image](#)

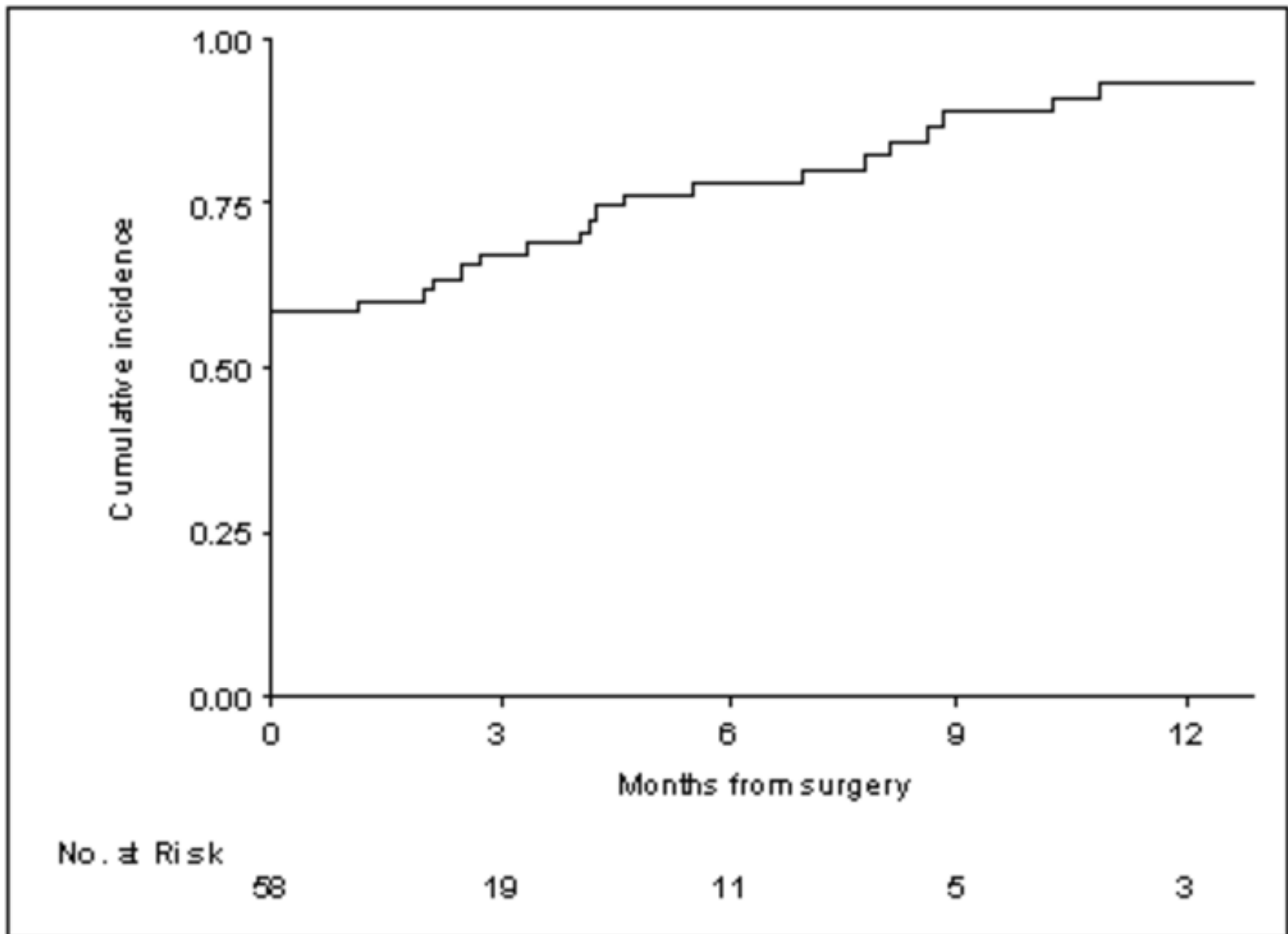


Table 1. Patients characteristics

	Grade						Total	
	2*		3**		4			
	No.	%	No.	%	No.	%	No.	%
Gender								
Male	8	66.67	7	63.64	23	65.71	38	65.52
Female	4	33.33	4	36.36	12	34.29	20	34.48
Age								
<60	9	75	7	63.64	11	31.43	27	46.55
>=60	3	25	4	36.36	24	68.57	31	53.45
Radical surgery								
Biopsy/Partial resection	12	100	10	90.91	24	68.57	46	79.31
Radical resection	0	0	1	9.09	11	31.43	12	20.69
Tumor tissue status								
Methylated	6	75	3	37.5	20	62.5	29	60.4
Unmethylated	2	25	5	62.5	12	37.5	19	39.6
Missing	4	-	3	-	3	-	10	-
Plasma status								
Methylated	3	25	3	27.27	18	51.43	24	41.38
Unmethylated	9	75	8	72.73	17	48.57	34	58.62
Total	12	100	11	100	35	100	58	100

* Grade II : 2 Astrocytomas, 8 Oligoastrocytomas, 2 Oligodendrogliomas

** Grade III: 5 Anaplastic Astrocytomas, 2 Anaplastic Oligoastrocytomas,
4 Anaplastic Oligodendrogliomas

Table 2. Concordance of MGMT promoter methylation status in tumor tissue and in plasma

	Plasma				Total
	Methylated		Unmethylated		
	No.	%	No.	%	
Tumor tissue					
Methylated	23	79.3	6	20.7	29
Unmethylated	0	0.00	19	100.0	19
Total	23		25		48
Kappa = 0.75, 95%CI 0.57- 0.93					

Table 3 Unadjusted and adjusted effects of prognostic factors of mortality

	Unadjusted effect		Model 1 *		Model 2 §	
	Hazard ratio	95% CI	Hazard ratio	95% CI	Hazard ratio	95% CI
MGMT status tumor tissue						
Methylated	1		1			
Unmethylated	2.18	[0.99,4.80]	2.21	[0.99,4.95]		
MGMT status plasma						
Methylated	1				1	
Unmethylated	1.52	[0.73-3.18]			2.19	[1.02,4.68]
Grade						
2	1		1		1	
3-4	5.41	[1.29,22.78]	1.94	[0.44,8.60]	4.71	[1.05,21.06]
Age						
<=60	1		1		1	
>60	2.62	[1.21-5.65]	1.89	[0.80,4.50]	2.16	[0.97,4.82]

* Model 1: Methylation status in tumor tissue, tumor grade and age.

§ Model 2: Methylation status in plasma at baseline, tumor grade and age.

Table 4 Unadjusted and adjusted effects of prognostic factors of progression free survival

	Unadjusted effect		Model 1 *		Model 2 §	
	Hazard ratio	95% CI	Hazard ratio	95% CI	Hazard ratio	95% CI
MGMT status tumor tissue						
Methylated	1		1			
Unmethylated	2.55	[1.32,4.93]	2.30	[1.19,4.45]		
MGMT status plasma						
Methylated	1				1	
Unmethylated	1.22	[0.66-2.25]			1.77	[0.95,3.30]
Grade						
2	1		1		1	
3-4	10.24	[2.46,42.59]	5.24	[1.22,22.47]	9.58	[2.22,41.24]
Age						
<=60	1		1		1	
>60	2.42	[1.27,4.62]	1.26	[0.63,2.51]	1.67	[0.86,3.22]

* Model 1: Methylation status in tumor tissue, tumor grade and age.

§ Model 2: Methylation status in plasma at baseline, tumor grade and age.