

AperTO - Archivio Istituzionale Open Access dell'Università di Torino

**Impact of viral eradication with sofosbuvir-based therapy on the outcome of post-transplant hepatitis C with severe fibrosis**

**This is a pre print version of the following article:**

*Original Citation:*

*Availability:*

This version is available <http://hdl.handle.net/2318/1611544> since 2017-06-08T00:39:16Z

*Published version:*

DOI:10.1111/liv.13193

*Terms of use:*

Open Access

Anyone can freely access the full text of works made available as "Open Access". Works made available under a Creative Commons license can be used according to the terms and conditions of said license. Use of all other works requires consent of the right holder (author or publisher) if not exempted from copyright protection by the applicable law.

(Article begins on next page)



## Impact of Viral Eradication with Sofosbuvir-based Therapy on the Outcome of Post-Transplant Hepatitis C with Severe Fibrosis

Journal:	<i>Liver International</i>
Manuscript ID	LIVint-16-00427.R2
Wiley - Manuscript type:	Original Articles
Date Submitted by the Author:	n/a
Complete List of Authors:	<p>Martini, Silvia; AOU Città della Salute e della Scienza di Torino, Gastrohepatology Unit          Sacco, Marco; AOU Città della Salute e della Scienza di Torino, Gastrohepatology Unit          Strona, Silvia; AOU Città della Salute e della Scienza di Torino, Gastrohepatology Unit          Arese, Daniele; AOU Città della Salute e della Scienza di Torino, Gastrohepatology Unit          Tandoi, Francesco; AOU Città della Salute e della Scienza di Torino, Liver Transplantation Center, General Surgery Unit 2U          Dell Olio, Dominic; AOU Città della Salute e della Scienza di Torino, Regional Transplantation Center, Piedmont          Stradella, Davide; AOU Città della Salute e della Scienza di Torino, Gastrohepatology Unit          Cocchis, Donatella; AOU Città della Salute e della Scienza di Torino, Liver Transplantation Center, General Surgery Unit 2U          Mirabella, Stefano; AOU Città della Salute e della Scienza di Torino, Liver Transplantation Center, General Surgery Unit 2U          Rizza, Giorgia; AOU Città della Salute e della Scienza di Torino, Liver Transplantation Center, General Surgery Unit 2U          Magistrone, Paola; AOU Città della Salute e della Scienza di Torino, Regional Transplantation Center, Piedmont          Moschini, Pamela; AOU Città della Salute e della Scienza di Torino, Regional Transplantation Center, Piedmont          Ottobrelli, Antonio; AOU Città della Salute e della Scienza di Torino, Gastrohepatology Unit          Amoroso, Antonio; AOU Città della Salute e della Scienza di Torino, Regional Transplantation Center, Piedmont          Rizzetto, Mario; AOU Città della Salute e della Scienza di Torino, Gastrohepatology Unit          Salizzoni, Mauro; AOU Città della Salute e della Scienza di Torino, Liver Transplantation Center, General Surgery Unit 2U          Saracco, Giorgio; AOU Città della Salute e della Scienza di Torino, Gastrohepatology Unit          Romagnoli, Renato; AOU Città della Salute e della Scienza di Torino, Liver Transplantation Center, General Surgery Unit 2U</p>
Keywords:	Liver transplantation, HCV recurrence, Direct-acting antivirals, Non-

1  
2  
3  
4  
5  
6  
7  
8  
9  
10  
11  
12  
13  
14  
15  
16  
17  
18  
19  
20  
21  
22  
23  
24  
25  
26  
27  
28  
29  
30  
31  
32  
33  
34  
35  
36  
37  
38  
39  
40  
41  
42  
43  
44  
45  
46  
47  
48  
49  
50  
51  
52  
53  
54  
55  
56  
57  
58  
59  
60

	invasive fibrosis tests, Survival

SCHOLARONE™  
Manuscripts

For Peer Review

1  
2  
3 **Impact of Viral Eradication with Sofosbuvir-based Therapy on the Outcome**  
4  
5 **of Post-Transplant Hepatitis C with Severe Fibrosis**  
6  
7

8  
9 Silvia Martini,<sup>1</sup> Marco Sacco,<sup>1</sup> Silvia Strona,<sup>1</sup> Daniele Arese,<sup>1</sup> Francesco Tandoi,<sup>2</sup>  
10  
11 Dominic Dell Olio,<sup>3</sup> Davide Stradella,<sup>1</sup> Donatella Cocchis,<sup>2</sup> Stefano Mirabella,<sup>2</sup>  
12  
13 Giorgia Rizza,<sup>2</sup> Paola Magistroni,<sup>3</sup> Pamela Moschini,<sup>3</sup> Antonio Ottobrelli,<sup>1</sup>  
14  
15 Antonio Amoroso,<sup>3</sup> Mario Rizzetto,<sup>1</sup> Mauro Salizzoni,<sup>2</sup>  
16  
17 Giorgio M. Saracco,<sup>1</sup> Renato Romagnoli<sup>2</sup>  
18  
19

20  
21  
22  
23 <sup>1</sup>Gastrohepatology Unit

24  
25 <sup>2</sup>Liver Transplantation Center, General Surgery Unit 2U

26  
27 <sup>3</sup>Regional Transplantation Center, Piedmont

28  
29 AOU Città della Salute e della Scienza di Torino, University of Turin, Italy  
30  
31  
32  
33  
34  
35

36 **Correspondence information**

37  
38 Silvia Martini, MD

39  
40 Gastrohepatology Unit, AOU Città della Salute e della Scienza di Torino

41  
42 Corso Bramante, 88 - 10126 Turin - Italy

43  
44 Phone: +39 011 6335928; fax: +39 011 6334014

45  
46 E-mail address: [sivima21@hotmail.com](mailto:sivima21@hotmail.com)  
47  
48  
49

50  
51 Electronic word count for main body of the manuscript: 4337.

52  
53 Number of figures: 2. Number of tables: 3.  
54  
55  
56  
57  
58  
59  
60

**List of abbreviations in the order of appearance:**

HCV, hepatitis C virus; LT, liver transplantation; Peg-IFN, pegylated-interferon; SVR, sustained virological response; SVR12, sustained virological response at week 12 after the end of treatment; DAAs, direct-acting antiviral agents; LS, liver stiffness; kPa, kilopascal; EOT, end of therapy; *IL28B*, *Interleukin 28B*; HLA, human leukocyte antigen; AE, adverse event; AST, aspartate aminotransferase; APRI, AST to platelet ratio index; ALT, alanine aminotransferase; SVR24, sustained virological response at week 24 after the end of treatment; ROC, receiver operating characteristic; MELD, Model for End-stage Liver Disease; F, fibrosis; ITT, intention to treat.

**Conflict of interest**

MR is an Advisory Board member for AbbVie, BMS, Gilead, Janssen, MSD.

GMS is an Advisory Board member for AbbVie, Gilead and MSD.

SM is a Regional Advisory Board member for Gilead.

The other Authors who have taken part in this study declared no conflict of interest.

**Financial support**

This work was unsupported.

**ABSTRACT**

*Background & Aims.* Several studies have shown that new direct-acting-antivirals (DAAs) maintain their efficacy in liver transplant (LT) recipients with severe HCV recurrence. We determined the clinical impact of Sofosbuvir/Ribavirin in LT through the changes in liver function and fibrosis state at 24 and 48 weeks after treatment.

*Methods.* Between 06/2014 and 07/2015, 126 patients (30 F3, 96 F4 Metavir stage) were enrolled to receive sofosbuvir+ribavirin (24 weeks, 118 patients) or sofosbuvir+simeprevir+ribavirin (12 weeks, 8 patients); treatment was initiated at a median time of 4.3 years from LT. Median follow-up after therapy completion was 461 days.

*Results.* All 30 F3 patients achieved a sustained virological response at week 24 after treatment (SVR24), and showed a distinct amelioration of the AST-to-platelet-ratio-index (APRI), FIB-4 and liver stiffness at elastography by week 24 post-therapy, which were maintained at week 48.

Of the 96 F4 cirrhotic patients, 72 (75%) achieved SVR24 accompanied by significant improvement of liver function, which was maintained at week 48 (Child B-C 22% baseline, 11% week 24, 7% week 48); APRI, FIB-4, liver stiffness further improved significantly between week 24 and 48 of follow-up. Among the 77 responders (27 F3, 50 F4) who underwent elastography at baseline and at the end of follow-up, 39 (50.6%; 18 F3, 21 F4) exhibited a regression in fibrosis stage. *Conclusion.* At about one-year from the completion of successful sofosbuvir-based therapy, patients with post-LT HCV and severe fibrosis experienced a long-term liver function improvement accompanied by a regression of fibrosis stage in half of them.

**Keywords**

Liver transplantation; HCV recurrence; direct-acting antivirals; non-invasive fibrosis tests; survival.

**Key point box**

- 126 patients with post liver transplant HCV and severe fibrosis (30 F3 and 96 F4 Metavir) received a sofosbuvir-based antiviral therapy. The median follow-up after therapy was 461 days.
- All the 30 F3 patients and 72 of the 96 cirrhotics (75%) achieved a sustained virological response at week 24 after treatment.
- HCV-eradicated patients showed a distinct amelioration in AST-to-platelet-ratio-index, FIB-4 and liver stiffness at week 24 after therapy, which persisted in F3 patients and further improved in F4 ones at week 48.
- In transient elastography, the fibrosis stage regressed in half of the HCV-eradicated patients at week 48 after therapy.

Peer Review

## INTRODUCTION

Hepatitis C virus (HCV) is the leading cause of cirrhosis and hepatocellular carcinoma and the most common indication for liver transplantation (LT) in Europe and United States [1].

Infection recurs almost universally in patients who have detectable serum HCV RNA at LT and it is the main cause of graft failure and patient death [2]. Successful HCV eradication is associated with reduced disease progression, and improved liver allograft and recipient survival [3].

Until few years ago, pegylated-interferon (Peg-IFN) with ribavirin was the only treatment for HCV recurrence post-LT; however its use was limited by poor efficacy and beset with significant adverse events [4]. The addition of first generation protease inhibitors, boceprevir and telaprevir, doubled the rates of sustained virological response (SVR) at 12 weeks (SVR12) in HCV genotype 1, but was aggravated by unacceptable toxicity and drug-drug interactions [5]. A major breakthrough has been the advent of second generation direct-acting antiviral agents (DAAs), which interact with different HCV functions and have markedly improved antiviral efficacy and tolerability [6], leading to HCV eradication also in patients with severe recurrent hepatitis C after LT.

The therapeutic potential of the prototype sofosbuvir was quickly perceived; the combinations of sofosbuvir with ribavirin  $\pm$  Peg-IFN and of sofosbuvir with simeprevir  $\pm$  ribavirin were reported in early international studies to achieve 59% to 88% SVR12 rates [7, 8]. A sofosbuvir compassionate use program was activated in Italy between June 2014 and December 2014; simeprevir became available later, in February 2015.

The primary target of early studies was the virologic efficacy and the tolerability of DAAs in order to meet the urgent demand from transplant patients. In this single-center study, we report the clinical outcome of therapy in a large series of patients with severe fibrosis due to hepatitis C recurrence; the majority were treated with sofosbuvir plus ribavirin, a minority with sofosbuvir plus simeprevir plus ribavirin. We focused on the changes in liver function



1  
2  
3 parameters and in non-invasive tests of fibrosis up to 48 weeks after the end of successful  
4  
5 treatment.  
6  
7

## 8 9 **PATIENTS AND METHODS**

### 10 **Study population**

11  
12 Out of 273 surviving HCV recipients with persistent viremia following LT performed in Turin  
13  
14 (Italy) since January 2000, between June 2014 and May 2015 we enrolled 126 patients  
15  
16 with recurrent hepatitis C who exhibited a Metavir staging score  $\geq 3$ , and a creatinine  
17  
18 clearance  $\geq 30$  mL/min. The severity of fibrosis was determined within 6 months from  
19  
20 treatment by liver biopsy or by transient elastography [liver stiffness (LS) cut-off values of  
21  
22 9.5 kilopascal (kPa) and 12.5 kPa corresponding, respectively, to Metavir F3 and F4  
23  
24 fibrosis stages] [9]. Only transient elastography measurements with a success rate of at  
25  
26 least 60% were considered valid.  
27  
28  
29

30  
31 From June 2014 to December 2014 patients were treated in the context of the sofosbuvir  
32  
33 national compassionate use program; each treatment was approved by the local ethic  
34  
35 committee (Comitato Etico Interaziendale A.O.U. Città della Salute e della Scienza di  
36  
37 Torino—A.O. Ordine Mauriziano—A.S.L. TO1) and the patients provided written informed  
38  
39 consent. By the Italian legislation, Regional Transplantation Centers are the lawful  
40  
41 custodians of the recipient/donor biomedical data for clinical and for research purposes. All  
42  
43 study procedures were compliant with the ethical standards of the 2000 Declaration of  
44  
45 Helsinki as well as the Declaration of Istanbul 2008.  
46  
47  
48

49 The demographic and baseline characteristics of the study population and their donors are  
50  
51 shown in Table 1.  
52  
53  
54  
55  
56  
57  
58  
59  
60

## Study protocol

The treatment regimens consisted of sofosbuvir 400 mg once daily and ribavirin twice daily (at a dose of 1000 mg daily with body weight <75 kg, or 1200 mg daily with body weight ≥75 kg, adjusted according to haemoglobin level and renal function) for 24 weeks, or sofosbuvir 400 mg once daily, ribavirin twice daily (weight-based) and simeprevir 150 mg once daily for 12 weeks. Epoetin-alfa at 20,000-40,000 units/week was administered subcutaneously to patients with haemoglobin levels <10 g/dL.

Patients underwent clinical and laboratory assessment [HCV RNA by polymerase chain reaction technique with AmpliPrep<sup>®</sup>/COBAS TaqMan<sup>®</sup> HCV version 2 (Roche Molecular Systems, Inc., Branchburg, NJ, US), complete blood cell count, liver and kidney function tests, serum electrolytes, serum levels of immunosuppressive drugs] at baseline, weekly for the first month, then monthly while on treatment and at 1, 3, 6 and 12 months after the end of therapy (EOT). No viral resistance monitoring was performed.

At baseline, all patients were tested for HCV genotype (reverse hybridization line probe assay, INNO-LIPA, Innogenetics, Ghent, Belgium), *Interleukin 28B (IL28B)* rs12979860 C/T and rs8099917 T/G polymorphisms (Custom TaqMan<sup>®</sup> Allelic Discrimination Kit, Life Technologies Applied Biosystems<sup>®</sup>, Thermo Fisher Scientific, Waltham, MA, US) and serum 25-OH vitamin D level (fully automated chemiluminescence immunoassay, ADVIA Centaur<sup>®</sup> Vitamin D Total assay, Siemens Healthcare Diagnostics Inc., Tarrytown, NY, USA). Human leukocyte antigen (HLA) DRB1 typing was collected as well (performed before transplant, by serology methods until 2006 and then by molecular low-resolution), paying particular attention to HLA-DRB1\*11 phenotype [10]. Adverse events (AE), drug dose modifications, use of growth factors, blood transfusions, and need for hospitalisation during treatment were recorded.

To assess the changes in fibrosis evolution in virological responders, transient elastography was performed at 24 and 48 weeks from EOT. The FIB-4 index and the

1  
2  
3 aspartate aminotransferase (AST) to platelet ratio index (APRI) were calculated at baseline  
4 and 24 and 48 weeks after EOT on fasting blood samples. The following formulas were  
5 used. FIB-4=[age (years) x AST (IU/L)]/[platelets ( $10^9/L$ ) x alanine aminotransferase  
6 (ALT)<sup>1/2</sup> (IU/L)]; a score of <1.45 and >3.25 should identify patients who, respectively, have  
7 moderate or significant fibrosis [11]. APRI=[AST (IU/L)/upper limit of normal (IU/L)] x  
8 100/platelets ( $10^9/L$ ); severe fibrosis was considered unlikely with an APRI  $\leq 0.7$  and  
9 cirrhosis likely with an APRI  $\geq 1$  [12]. Upper limits of normal for our laboratory are: ALT 40  
10 IU/L for male and 35 IU/L for female; AST 45 IU/L for male and 30 IU/L for female.  
11  
12  
13  
14  
15  
16  
17  
18  
19  
20  
21 Survival data were collected on May 31, 2016.  
22  
23  
24

### 25 **Study endpoints**

26  
27 Primary endpoints of the study were survival and clinical outcome of patients who had  
28 achieved a sustained virological response at week 24 after EOT (SVR24). To this purpose  
29 we considered the variations from baseline to weeks 24 and 48 of: i) liver function  
30 parameters; ii) non-invasive tests of fibrosis (APRI, FIB-4, transient elastography).  
31  
32  
33  
34  
35  
36  
37  
38  
39  
40  
41  
42  
43  
44  
45  
46  
47  
48  
49  
50  
51  
52  
53  
54  
55  
56  
57  
58  
59  
60  
61  
62  
63  
64  
65  
66  
67  
68  
69  
70  
71  
72  
73  
74  
75  
76  
77  
78  
79  
80  
81  
82  
83  
84  
85  
86  
87  
88  
89  
90  
91  
92  
93  
94  
95  
96  
97  
98  
99  
100  
101  
102  
103  
104  
105  
106  
107  
108  
109  
110  
111  
112  
113  
114  
115  
116  
117  
118  
119  
120  
121  
122  
123  
124  
125  
126  
127  
128  
129  
130  
131  
132  
133  
134  
135  
136  
137  
138  
139  
140  
141  
142  
143  
144  
145  
146  
147  
148  
149  
150  
151  
152  
153  
154  
155  
156  
157  
158  
159  
160  
161  
162  
163  
164  
165  
166  
167  
168  
169  
170  
171  
172  
173  
174  
175  
176  
177  
178  
179  
180  
181  
182  
183  
184  
185  
186  
187  
188  
189  
190  
191  
192  
193  
194  
195  
196  
197  
198  
199  
200  
201  
202  
203  
204  
205  
206  
207  
208  
209  
210  
211  
212  
213  
214  
215  
216  
217  
218  
219  
220  
221  
222  
223  
224  
225  
226  
227  
228  
229  
230  
231  
232  
233  
234  
235  
236  
237  
238  
239  
240  
241  
242  
243  
244  
245  
246  
247  
248  
249  
250  
251  
252  
253  
254  
255  
256  
257  
258  
259  
260  
261  
262  
263  
264  
265  
266  
267  
268  
269  
270  
271  
272  
273  
274  
275  
276  
277  
278  
279  
280  
281  
282  
283  
284  
285  
286  
287  
288  
289  
290  
291  
292  
293  
294  
295  
296  
297  
298  
299  
300  
301  
302  
303  
304  
305  
306  
307  
308  
309  
310  
311  
312  
313  
314  
315  
316  
317  
318  
319  
320  
321  
322  
323  
324  
325  
326  
327  
328  
329  
330  
331  
332  
333  
334  
335  
336  
337  
338  
339  
340  
341  
342  
343  
344  
345  
346  
347  
348  
349  
350  
351  
352  
353  
354  
355  
356  
357  
358  
359  
360  
361  
362  
363  
364  
365  
366  
367  
368  
369  
370  
371  
372  
373  
374  
375  
376  
377  
378  
379  
380  
381  
382  
383  
384  
385  
386  
387  
388  
389  
390  
391  
392  
393  
394  
395  
396  
397  
398  
399  
400  
401  
402  
403  
404  
405  
406  
407  
408  
409  
410  
411  
412  
413  
414  
415  
416  
417  
418  
419  
420  
421  
422  
423  
424  
425  
426  
427  
428  
429  
430  
431  
432  
433  
434  
435  
436  
437  
438  
439  
440  
441  
442  
443  
444  
445  
446  
447  
448  
449  
450  
451  
452  
453  
454  
455  
456  
457  
458  
459  
460  
461  
462  
463  
464  
465  
466  
467  
468  
469  
470  
471  
472  
473  
474  
475  
476  
477  
478  
479  
480  
481  
482  
483  
484  
485  
486  
487  
488  
489  
490  
491  
492  
493  
494  
495  
496  
497  
498  
499  
500  
501  
502  
503  
504  
505  
506  
507  
508  
509  
510  
511  
512  
513  
514  
515  
516  
517  
518  
519  
520  
521  
522  
523  
524  
525  
526  
527  
528  
529  
530  
531  
532  
533  
534  
535  
536  
537  
538  
539  
540  
541  
542  
543  
544  
545  
546  
547  
548  
549  
550  
551  
552  
553  
554  
555  
556  
557  
558  
559  
560  
561  
562  
563  
564  
565  
566  
567  
568  
569  
570  
571  
572  
573  
574  
575  
576  
577  
578  
579  
580  
581  
582  
583  
584  
585  
586  
587  
588  
589  
590  
591  
592  
593  
594  
595  
596  
597  
598  
599  
600  
601  
602  
603  
604  
605  
606  
607  
608  
609  
610  
611  
612  
613  
614  
615  
616  
617  
618  
619  
620  
621  
622  
623  
624  
625  
626  
627  
628  
629  
630  
631  
632  
633  
634  
635  
636  
637  
638  
639  
640  
641  
642  
643  
644  
645  
646  
647  
648  
649  
650  
651  
652  
653  
654  
655  
656  
657  
658  
659  
660  
661  
662  
663  
664  
665  
666  
667  
668  
669  
670  
671  
672  
673  
674  
675  
676  
677  
678  
679  
680  
681  
682  
683  
684  
685  
686  
687  
688  
689  
690  
691  
692  
693  
694  
695  
696  
697  
698  
699  
700  
701  
702  
703  
704  
705  
706  
707  
708  
709  
710  
711  
712  
713  
714  
715  
716  
717  
718  
719  
720  
721  
722  
723  
724  
725  
726  
727  
728  
729  
730  
731  
732  
733  
734  
735  
736  
737  
738  
739  
740  
741  
742  
743  
744  
745  
746  
747  
748  
749  
750  
751  
752  
753  
754  
755  
756  
757  
758  
759  
760  
761  
762  
763  
764  
765  
766  
767  
768  
769  
770  
771  
772  
773  
774  
775  
776  
777  
778  
779  
780  
781  
782  
783  
784  
785  
786  
787  
788  
789  
790  
791  
792  
793  
794  
795  
796  
797  
798  
799  
800  
801  
802  
803  
804  
805  
806  
807  
808  
809  
810  
811  
812  
813  
814  
815  
816  
817  
818  
819  
820  
821  
822  
823  
824  
825  
826  
827  
828  
829  
830  
831  
832  
833  
834  
835  
836  
837  
838  
839  
840  
841  
842  
843  
844  
845  
846  
847  
848  
849  
850  
851  
852  
853  
854  
855  
856  
857  
858  
859  
860  
861  
862  
863  
864  
865  
866  
867  
868  
869  
870  
871  
872  
873  
874  
875  
876  
877  
878  
879  
880  
881  
882  
883  
884  
885  
886  
887  
888  
889  
890  
891  
892  
893  
894  
895  
896  
897  
898  
899  
900  
901  
902  
903  
904  
905  
906  
907  
908  
909  
910  
911  
912  
913  
914  
915  
916  
917  
918  
919  
920  
921  
922  
923  
924  
925  
926  
927  
928  
929  
930  
931  
932  
933  
934  
935  
936  
937  
938  
939  
940  
941  
942  
943  
944  
945  
946  
947  
948  
949  
950  
951  
952  
953  
954  
955  
956  
957  
958  
959  
960  
961  
962  
963  
964  
965  
966  
967  
968  
969  
970  
971  
972  
973  
974  
975  
976  
977  
978  
979  
980  
981  
982  
983  
984  
985  
986  
987  
988  
989  
990  
991  
992  
993  
994  
995  
996  
997  
998  
999  
1000

### 40 **Statistical analysis**

41  
42  
43 Categorical variables were represented as n (%) and compared using Fisher's exact test.  
44  
45  
46  
47  
48  
49  
50  
51  
52  
53  
54  
55  
56  
57  
58  
59  
60  
61  
62  
63  
64  
65  
66  
67  
68  
69  
70  
71  
72  
73  
74  
75  
76  
77  
78  
79  
80  
81  
82  
83  
84  
85  
86  
87  
88  
89  
90  
91  
92  
93  
94  
95  
96  
97  
98  
99  
100  
101  
102  
103  
104  
105  
106  
107  
108  
109  
110  
111  
112  
113  
114  
115  
116  
117  
118  
119  
120  
121  
122  
123  
124  
125  
126  
127  
128  
129  
130  
131  
132  
133  
134  
135  
136  
137  
138  
139  
140  
141  
142  
143  
144  
145  
146  
147  
148  
149  
150  
151  
152  
153  
154  
155  
156  
157  
158  
159  
160  
161  
162  
163  
164  
165  
166  
167  
168  
169  
170  
171  
172  
173  
174  
175  
176  
177  
178  
179  
180  
181  
182  
183  
184  
185  
186  
187  
188  
189  
190  
191  
192  
193  
194  
195  
196  
197  
198  
199  
200  
201  
202  
203  
204  
205  
206  
207  
208  
209  
210  
211  
212  
213  
214  
215  
216  
217  
218  
219  
220  
221  
222  
223  
224  
225  
226  
227  
228  
229  
230  
231  
232  
233  
234  
235  
236  
237  
238  
239  
240  
241  
242  
243  
244  
245  
246  
247  
248  
249  
250  
251  
252  
253  
254  
255  
256  
257  
258  
259  
260  
261  
262  
263  
264  
265  
266  
267  
268  
269  
270  
271  
272  
273  
274  
275  
276  
277  
278  
279  
280  
281  
282  
283  
284  
285  
286  
287  
288  
289  
290  
291  
292  
293  
294  
295  
296  
297  
298  
299  
300  
301  
302  
303  
304  
305  
306  
307  
308  
309  
310  
311  
312  
313  
314  
315  
316  
317  
318  
319  
320  
321  
322  
323  
324  
325  
326  
327  
328  
329  
330  
331  
332  
333  
334  
335  
336  
337  
338  
339  
340  
341  
342  
343  
344  
345  
346  
347  
348  
349  
350  
351  
352  
353  
354  
355  
356  
357  
358  
359  
360  
361  
362  
363  
364  
365  
366  
367  
368  
369  
370  
371  
372  
373  
374  
375  
376  
377  
378  
379  
380  
381  
382  
383  
384  
385  
386  
387  
388  
389  
390  
391  
392  
393  
394  
395  
396  
397  
398  
399  
400  
401  
402  
403  
404  
405  
406  
407  
408  
409  
410  
411  
412  
413  
414  
415  
416  
417  
418  
419  
420  
421  
422  
423  
424  
425  
426  
427  
428  
429  
430  
431  
432  
433  
434  
435  
436  
437  
438  
439  
440  
441  
442  
443  
444  
445  
446  
447  
448  
449  
450  
451  
452  
453  
454  
455  
456  
457  
458  
459  
460  
461  
462  
463  
464  
465  
466  
467  
468  
469  
470  
471  
472  
473  
474  
475  
476  
477  
478  
479  
480  
481  
482  
483  
484  
485  
486  
487  
488  
489  
490  
491  
492  
493  
494  
495  
496  
497  
498  
499  
500  
501  
502  
503  
504  
505  
506  
507  
508  
509  
510  
511  
512  
513  
514  
515  
516  
517  
518  
519  
520  
521  
522  
523  
524  
525  
526  
527  
528  
529  
530  
531  
532  
533  
534  
535  
536  
537  
538  
539  
540  
541  
542  
543  
544  
545  
546  
547  
548  
549  
550  
551  
552  
553  
554  
555  
556  
557  
558  
559  
560  
561  
562  
563  
564  
565  
566  
567  
568  
569  
570  
571  
572  
573  
574  
575  
576  
577  
578  
579  
580  
581  
582  
583  
584  
585  
586  
587  
588  
589  
590  
591  
592  
593  
594  
595  
596  
597  
598  
599  
600  
601  
602  
603  
604  
605  
606  
607  
608  
609  
610  
611  
612  
613  
614  
615  
616  
617  
618  
619  
620  
621  
622  
623  
624  
625  
626  
627  
628  
629  
630  
631  
632  
633  
634  
635  
636  
637  
638  
639  
640  
641  
642  
643  
644  
645  
646  
647  
648  
649  
650  
651  
652  
653  
654  
655  
656  
657  
658  
659  
660  
661  
662  
663  
664  
665  
666  
667  
668  
669  
670  
671  
672  
673  
674  
675  
676  
677  
678  
679  
680  
681  
682  
683  
684  
685  
686  
687  
688  
689  
690  
691  
692  
693  
694  
695  
696  
697  
698  
699  
700  
701  
702  
703  
704  
705  
706  
707  
708  
709  
710  
711  
712  
713  
714  
715  
716  
717  
718  
719  
720  
721  
722  
723  
724  
725  
726  
727  
728  
729  
730  
731  
732  
733  
734  
735  
736  
737  
738  
739  
740  
741  
742  
743  
744  
745  
746  
747  
748  
749  
750  
751  
752  
753  
754  
755  
756  
757  
758  
759  
760  
761  
762  
763  
764  
765  
766  
767  
768  
769  
770  
771  
772  
773  
774  
775  
776  
777  
778  
779  
780  
781  
782  
783  
784  
785  
786  
787  
788  
789  
790  
791  
792  
793  
794  
795  
796  
797  
798  
799  
800  
801  
802  
803  
804  
805  
806  
807  
808  
809  
810  
811  
812  
813  
814  
815  
816  
817  
818  
819  
820  
821  
822  
823  
824  
825  
826  
827  
828  
829  
830  
831  
832  
833  
834  
835  
836  
837  
838  
839  
840  
841  
842  
843  
844  
845  
846  
847  
848  
849  
850  
851  
852  
853  
854  
855  
856  
857  
858  
859  
860  
861  
862  
863  
864  
865  
866  
867  
868  
869  
870  
871  
872  
873  
874  
875  
876  
877  
878  
879  
880  
881  
882  
883  
884  
885  
886  
887  
888  
889  
890  
891  
892  
893  
894  
895  
896  
897  
898  
899  
900  
901  
902  
903  
904  
905  
906  
907  
908  
909  
910  
911  
912  
913  
914  
915  
916  
917  
918  
919  
920  
921  
922  
923  
924  
925  
926  
927  
928  
929  
930  
931  
932  
933  
934  
935  
936  
937  
938  
939  
940  
941  
942  
943  
944  
945  
946  
947  
948  
949  
950  
951  
952  
953  
954  
955  
956  
957  
958  
959  
960  
961  
962  
963  
964  
965  
966  
967  
968  
969  
970  
971  
972  
973  
974  
975  
976  
977  
978  
979  
980  
981  
982  
983  
984  
985  
986  
987  
988  
989  
990  
991  
992  
993  
994  
995  
996  
997  
998  
999  
1000

1  
2  
3 Prism® version 6 (GraphPad Software Inc., La Jolla, CA, US) and IBM SPSS version 21  
4  
5 (New York, NY, US).  
6  
7  
8

## 9 10 RESULTS

11 Of the 126 patients who entered the study, 118 received sofosbuvir and ribavirin for 24  
12 weeks and 8 were treated with sofosbuvir, simeprevir and ribavirin for 12 weeks. In the  
13 former group, 116 completed the full course of therapy; 2 patients died while on treatment  
14 (on day 93 and 151), 4 following the EOT (on day 41, 143, 166 and 328). The median  
15 follow-up of the surviving patients after EOT was 461 days (range 278-515 days).  
16  
17

18 All patients except 1 were Caucasian. Forty-seven percent of the grafts came from donors  
19  $\geq 65$  year old and/or with macrovesicular steatosis  $\geq 15\%$  (suboptimal graft) [13], 8% from  
20 hepatitis B core antibody positive and 7.1% from HCV antibody positive donors.  
21  
22

23 Two patients had been treated with a first-generation HCV protease-inhibitor before LT.  
24 The baseline stage of hepatic fibrosis (F) was evaluated in 28 patients by liver biopsy  
25 according to Metavir score (3 F3, 25 F4), in 12 patients by combined liver biopsy and  
26 transient elastography (12 F4) and in 86 patients by transient elastography only (27 F3  
27 and 59 F4). The median LS was: 11 kPa [interquartile 10.1-12] in the F3 group and 21.8  
28 kPa [17-34.8] in the F4 group. Thirty-four patients had diabetes mellitus, 33 were insulin  
29 dependent at the beginning of antiviral therapy.  
30  
31

32 The 8 patients treated with sofosbuvir, simeprevir and ribavirin were immunosuppressed  
33 with tacrolimus. The HCV genotype was 1a in two and 1b in six. Seven patients had  
34 fibrosis Metavir F3 and 1 F4 (Child A5, MELD 7), with median HCV RNA 6.56  $\log_{10}$  IU/mL.  
35  
36 Further demographic and baseline characteristics are presented in **Table 1**.  
37  
38

39 Four weeks after antiviral therapy was started, a statistically significant decrease was  
40 observed in the AST and ALT median values from 67 IU/L [45-114] to 24 IU/L [18-33],  $p$   
41  $< 0.001$ , and 58 IU/L [40-100] to 18 IU/L [13-26],  $p < 0.001$ , respectively. Transaminase  
42  
43  
44  
45  
46  
47  
48  
49  
50  
51  
52  
53  
54  
55  
56  
57  
58  
59  
60

1  
2  
3 values normalized (**Figure S1**) and remained normal throughout the follow-up in all  
4 eradicated patients but nine, who had persistently elevated enzymes (less than twice  
5 upper limit of normal). Six of these latter patients underwent a liver biopsy which showed  
6 minimal histological changes without evidence of rejection.  
7

8  
9  
10  
11 The overall SVR24 rate was 81.0% (102/126 patients, 95% confidence interval 73.2-86.9)  
12 by intention to treat (ITT) analysis. The SVR24 rate was significantly higher in F3  
13 compared with F4 patients (30/30, 100% vs 72/96, 75%,  $p=0.001$ ); in patients tolerating  
14  $\geq 80\%$  of the full weight-based ribavirin dose ( $n=104$ ) compared with those tolerating  $<80\%$   
15 of the dose ( $n=22$ ) (85.6% vs 59.0%,  $p=0.01$ ) and in patients with preserved liver function  
16 (MELD  $\leq 11$  and Child  $\leq A6$ , according to ROC curves) (**Figure S2**).  
17

18  
19  
20  
21 Two cirrhotic patients who became HCV RNA negative on therapy, died for multiresistant  
22 bacteria-related septic shock; two others died of liver failure after the EOT: one, 68 years  
23 old, had achieved a sustained virological response at week 4 after EOT, the other, 44  
24 years old, had achieved SVR12 and was on the list for retransplantation.  
25

26  
27  
28  
29  
30  
31  
32  
33  
34  
35  
36  
37  
38  
39  
40  
41  
42  
43  
44  
45  
46  
47  
48  
49  
50  
51  
52  
53  
54  
55  
56  
57  
58  
59  
60  
Twenty patients experienced a relapse of HCV (17 at week 4, 2 at week 12 and 1 at week  
24 of follow-up; the latter cleared HCV RNA at week 4 on therapy and normalized  
transaminases at week 1). All relapsers were cirrhotic (9 patients Child A, 10 Child B and 1  
Child C). They had a median pre-treatment MELD of 13 and had received sofosbuvir and  
ribavirin; the majority of them were *IL28B* non-C/C genotype (80%) and experienced to  
previous antiviral therapy (65%) (**Tables S1 and S2**). Basal median LS was 28.0 kPa in  
the relapsers and 20.4 kPa in the cirrhotics who achieved viral eradication ( $p=0.01$ ). APRI  
and FIB-4 were significantly higher in relapsers compared with responders at baseline  
(3.27 vs 1.92 and 8.45 vs 5.95, respectively;  $p < 0.01$  for both) (**Table 2**).

From baseline to EOT, the median Child improved in relapsers from B7 to A6 ( $p=0.014$ ),  
while the median MELD remained 13. Two patients died at 138 and 160 days after relapse  
due to progressive end-stage liver disease. Seventeen patients started a second treatment

1  
2  
3 course, at a median of 17 weeks (range 5-43 weeks) from the relapse. No significant  
4  
5 variation in liver function tests was observed between relapse and retreatment. One  
6  
7 patient refused retreatment.  
8

9  
10 Overall, in the cirrhotic group, 20 patients (20.8%) had a stable MELD from baseline to the  
11  
12 last available follow-up visit and 43 (44.8%) improved the score of at least 1 point; 46  
13  
14 patients (47.9%) had a stable Child and 35 (36.5%) improved the score of at least 1 point.  
15  
16

### 17 18 **Clinical outcomes in patients who achieved viral eradication**

19  
20 In the F3 patients, liver and kidney function remained normal (**Table S3**). APRI and FIB-4  
21  
22 were significantly lower at week 24 after EOT, compared with pre-treatment median values  
23  
24 (1.07 to 0.41,  $p < 0.001$ , and 3.26 to 2.08,  $p < 0.001$ , respectively); these indexes remained  
25  
26 stable in the 28 patients who reached 48 weeks of follow-up (**Figure 1, Panels A and C**).  
27  
28

29  
30 LS (available in 27 patients) improved from 11.0 kPa [10.1-12.0] to 7.7 kPa [6.6-10.2],  $p$   
31  
32  $< 0.001$ , at week 24 and remained stable at week 48 (7.8 kPa [7.0-10.6],  $p = 0.65$  vs week  
33  
34 24) (**Figure 2, Panel A**). In 18 patients (66.7%) LS decreased below the 9.5 kPa cut-off for  
35  
36 F3 at week 48.  
37

38  
39 At week 24 after EOT, the 72 F4 patients who had eradicated HCV, exhibited a significant  
40  
41 improvement in platelets count, bilirubin and albumin levels, degree of ascites and Child  
42  
43 score at pair wise comparison with baseline values [the rate of Child A was 77.8% (56/72)  
44  
45 at baseline and 88.9% (64/72) at week 24 of follow-up]; kidney function and MELD score  
46  
47 did not vary. Seventy-one of the 72 responders reached 48 weeks of follow-up and  
48  
49 showed a further significant increase in platelets count; albumin, ascites, and Child score  
50  
51 [93% (66/71) Child A] remained stable (**Table 3**).  
52  
53

54  
55 Both APRI and FIB-4 decreased significantly at week 24 after EOT compared with baseline  
56  
57 values (1.92 to 0.55,  $p < 0.001$ , and 5.95 to 3.15,  $p < 0.001$ , respectively), and further  
58  
59  
60

1  
2  
3 decreased at week 48, compared with 24 week values (APRI 0.51,  $p < 0.001$ ; FIB-4 3.12,  $p$   
4  $< 0.001$ ) (**Figure 1, Panels B and D**). Fifty-one of the 72 patients underwent transient  
5 elastography at baseline and at SVR24; the median LS improved from 20.4 kPa [16.0-  
6 33.8] to 17.5 kPa [11.1-25.7],  $p < 0.001$  (**Figure 2, Panel B**). Fifty patients underwent  
7 transient elastography also at week 48 after EOT; the median LS (14.0 kPa [10.0-21.3])  
8 significantly decreased compared with week 24 ( $p = 0.001$ ); in 21 of them (42%) the LS fell  
9 below the 12.5 kPa cut-off.  
10  
11

12 In 39 (50.6%) of the 77 F3-F4 responders pooled together, the fibrosis stage had  
13 regressed in transient elastography by at least one Metavir stage at week 48 after EOT.  
14  
15

16 No patients developed hepatocellular carcinoma in the period of observation.  
17

18 Thirteen out of the 20 cirrhotic responders with large oesophageal varices at baseline,  
19 underwent a second 48 week follow-up endoscopy; no change in the size of varices was  
20 observed.  
21  
22

## 23 Safety

24 AE are summarized in **Table S4**.  
25

26 During therapy, seven cirrhotic patients were hospitalised: two patients for grade 3  
27 encephalopathy, two for severe variceal bleeding and three for sepsis in decompensated  
28 liver disease. Six cirrhotic patients died of complications of end-stage liver disease,  
29 unrelated to antiviral therapy.  
30  
31

32 Three patients discontinued ribavirin for less than 1 week due to diffuse macular skin rash  
33 and no one discontinued therapy permanently due to AE.  
34  
35

36 Because of anemia and/or compromised renal function, 34.1% (43/126) of the patients  
37 were treated with a non weight-based escalating dose of ribavirin, starting from 400 mg  
38 daily and 11.1% (14/126) required dosage reduction; however, 82.5% (104/126) received  
39 at least 80% of the weight-based dosage. Median daily ribavirin dose was 1000 mg from  
40  
41  
42  
43  
44  
45  
46  
47  
48  
49  
50  
51  
52  
53  
54  
55  
56  
57  
58  
59  
60

1  
2  
3 baseline to EOT and median haemoglobin level declined from 12.8 g/dL at baseline to 10.9  
4  
5 g/dL at week 4 and remained stable around 10.8 g/dL from week 8 to week 24 (**Figure**  
6  
7 **S3**). In 60 patients (47.6%) we measured at least one haemoglobin level of less than 10  
8  
9 g/dL and in 12 (9.5%) of less than 8.5 g/dL; 45 patients (35.7%) received epoetin and 14  
10  
11 (11.1%) required blood transfusion.

12  
13 Minimal dose adjustments in the calcineurin inhibitors were required throughout the  
14  
15 treatment in 64% of the patients (27% increased, 12% decreased and 25% both  
16  
17 decreased and increased the dose) to maintain stable trough levels. No biopsy-proven  
18  
19 acute rejection occurred.  
20  
21  
22  
23

## 24 25 **DISCUSSION**

26  
27 The advent of highly effective and well tolerated DAAs against the HCV is revolutionizing  
28  
29 the outcome of LT for hepatitis C. In this setting, early treatment after surgery is expected  
30  
31 to be the most cost-effective strategy for patients who are still viremic at LT [10, 14],  
32  
33 nevertheless DAAs are providing rescue also to residual cohorts of re-infected transplant  
34  
35 recipients who developed advanced HCV disease [7, 8, 15]. When sofosbuvir became  
36  
37 available in Italy in June 2014, these patients received priority access to the new therapy  
38  
39 through a compassionate use program. A majority were treated with sofosbuvir and  
40  
41 ribavirin; a small minority received the combination of sofosbuvir, ribavirin and simeprevir,  
42  
43 which became available almost at the end of the enrollment period.  
44  
45

46  
47 After a median follow-up of 461 days from EOT, 102 (81%) of our 126 patients are free of  
48  
49 HCV and clinically stable. SVR was obtained also in a high proportion (95%) of the 21  
50  
51 patients with genotype 3, though this genotype is the most difficult to treat in the ordinary  
52  
53 clinical context. All treatment failures, excluding deceased patients, were due to virologic  
54  
55 relapses and all relapses, except one, occurred within the first 12 weeks after EOT.

56  
57 Response to therapy was influenced by the stage of fibrosis and by intolerance to ribavirin:  
58  
59  
60



1  
2  
3 75% of the patients with cirrhosis achieved an SVR compared to 100% of those with F3  
4  
5 fibrosis and among the 22 patients who tolerated less than 80% of the optimal ribavirin  
6  
7 dosage, only 59% obtained an SVR. As expected, anemia was the main complication of  
8  
9 ribavirin.  
10

11  
12 Considering the higher proportion of patients with cirrhosis in this study, our results appear  
13  
14 better than the 70% rate of SVR12 reported by Charlton [16] in a smaller series of 40  
15  
16 patients recruited in a multicenter study, of whom only 40% were cirrhotics; possibly the  
17  
18 management of the patients in a single center adopting a common approach may lead to  
19  
20 more uniform results. Though our results are distinctly better than the 43% response  
21  
22 reported by Forns et al [7], their series included a mixed population of compensated and  
23  
24 decompensated cirrhotics in which a substantial number of patients had a higher MELD  
25  
26 score and more severe disease than our patients.  
27

28  
29 There were in our study six deaths due to complications of the liver disease, two occurring  
30  
31 in patients who had cleared the HCV. The deceased patients had a higher MELD score,  
32  
33 ranging from 14 to 19, in confirmation that a deteriorated liver function may prevent clinical  
34  
35 improvement despite the antiviral efficacy of treatment [17]; vice versa a preserved liver  
36  
37 function expressed by a Child Pugh score  $\leq 6$  and a MELD  $\leq 11$  was associated with SVR.  
38  
39 In our 72 cirrhotic responders, SVR24 was associated with the normalization of  
40  
41 aminotransferases in almost all patients, accompanied by a decrease of bilirubin and an  
42  
43 increase of albumin levels; renal function deteriorated in none and ascites disappeared in  
44  
45 three quarters of cases. The platelet count increased throughout therapy, presumably  
46  
47 related to the administration of epoetin and to an increased production of endogenous  
48  
49 erythropoietin, secondary to ribavirin-induced anemia [18]. The platelet number diminished  
50  
51 to baseline values at week 12 post-therapy, but then climbed back significantly at week 24  
52  
53 and further increased at week 48; this trend and the regression of ascites might be  
54  
55 expression of an initial reduction in portal hypertension.  
56  
57  
58  
59  
60

1  
2  
3 The APRI and FIB-4 indexes significantly improved throughout the follow-up; as  
4  
5 aminotransferases and platelets are major components for their calculation, the  
6  
7 improvement can be explained by the normalization of the enzymes and by the increase in  
8  
9 the platelet count.  
10

11 LS values were significantly reduced at the 6<sup>th</sup> month of follow-up; this early improvement  
12  
13 presumably resulted for a large extent from the decrease of inflammation and edema  
14  
15 which may artificially alter elastography. Interestingly, however, LS values showed a further  
16  
17 significant decrease during the subsequent 6 month follow-up in patients with cirrhosis.  
18  
19

20 Considering that artefacts due to liver inflammation could no longer be implicated, it is  
21  
22 plausible that the observed continuing decrease of LS after the SVR24 corresponded to a  
23  
24 genuine progressive reduction of fibrosis. In agreement with previous findings of fibrosis  
25  
26 reversion in non-transplant patients with HCV cirrhosis who responded to interferon-  
27  
28 therapy [19-21], our data would suggest that regression of fibrosis starts early and may  
29  
30 become already measurable by transient elastography in the first year after therapy.  
31  
32

33 In conclusion, our experience in a large single center LT cohort of advanced recurrent HCV  
34  
35 disease, confirms the major therapeutic impact of sofosbuvir with ribavirin, extending also  
36  
37 to difficult-to-treat genotype 3 patients.  
38  
39

40 We acknowledge that a new wave of more efficacious DAA combinations is now available  
41  
42 to treat hepatitis C [8, 15, 22]. Nevertheless, this study provides a paradigm of the  
43  
44 excellent clinical outcome and of the potential for disease reversibility after successful DAA  
45  
46 therapy in the transplant setting.  
47  
48

## 51 **ACKNOWLEDGEMENTS**

52 No funding was obtained for this study.  
53  
54  
55  
56  
57  
58  
59  
60

**REFERENCES**

- [1] Adam R, Karam V, Delvart V. Evolution of indications and results of liver transplantation in Europe. A report from the European Liver Transplant Registry (ELTR). *J Hepatol* 2012;57:675-688.
- [2] Forman LM, Lewis JD, Berlin JA, Feldman HI, Lucey MR. The association between hepatitis C infection and survival after orthotopic liver transplantation. *Gastroenterology* 2002;122:889–896.
- [3] Crespo G, Marino Z, Navasa M, Forns X. Viral hepatitis in liver transplantation. *Gastroenterology* 2012;142:1373-1383.
- [4] Berenguer M. Systematic review of the treatment of established recurrent hepatitis C with pegylated interferon in combination with ribavirin. *J Hepatol* 2008;49:274-287.
- [5] Coilly A, Roche B, Dumortier J, Leroy V, Botta-Fridlund D, Radenne S, et al. Safety and efficacy of protease inhibitors to treat hepatitis C after liver transplantation: a multicenter experience. *J Hepatol* 2014;60:78-86.
- [6] EASL recommendations on treatment of hepatitis C 2015. *J Hepatol* 2015;63:199-236.
- [7] Forns X, Charlton M, Denning J, McHutchison JG, Symonds WT, Brainard D, et al. Sofosbuvir compassionate use program for patients with severe recurrent hepatitis C after liver transplantation. *Hepatology* 2015;61:1485-1494.
- [8] Brown RS Jr, O'Leary JG, Reddy KR, Kuo A, Morelli GJ, Burton JR Jr, et al. Interferon-free therapy for genotype 1 hepatitis C in liver transplant recipients: real world experience from HCV-TARGET. *Liver Transpl* 2016;22:24-33.
- [9] Castera L, Forns X, Alberti A. Non-invasive evaluation of liver fibrosis using transient elastography. *J Hepatol* 2008;48:835-847.
- [10] Romagnoli R, Martini S, Tandoi F, Dell Olio D, Magistroni P, Bertinetto FE, et al. Early reduced liver graft survival in hepatitis C recipients identified by two combined

1  
2  
3 genetic markers. *Transpl Int* 2016; doi: 10.1111/tri.12795.

4  
5 [11] Vallet-Pichard A, Mallet V, Nalpas B, Verkarre V, Nalpas A, Dhalluin-Venier V, et al.  
6  
7 FIB-4: an inexpensive and accurate marker of fibrosis in HCV infection. Comparison with  
8  
9 liver biopsy and fibrotest. *Hepatology* 2007;46:32-36.

10  
11 [12] Wai CT, Greenson JK, Fontana RJ, Kalbfleisch JD, Marrero JA, Conjeevaram HS,  
12  
13 et al. A simple non-invasive index can predict both significant fibrosis and cirrhosis in  
14  
15 patients with chronic hepatitis C. *Hepatology* 2003;38:518-526.

16  
17 [13] Salizzoni M, Franchello A, Smedile A, David E, Barbui A, Torrani M, et al. Marginal  
18  
19 grafts: finding the correct treatment for fatty livers. *Transpl Int* 2003;16:486-493.

20  
21 [14] Russo FP, Zanetto A, Burra P. Timing for treatment of HCV recurrence after liver  
22  
23 transplantation: the earlier the better. *Transpl Int* 2016;29:694-697.

24  
25 [15] Charlton M, Everson GT, Flamm SL, Kumar P, Landis C, Brown RS, et al. Ledipasvir  
26  
27 and sofosbuvir plus ribavirin for treatment of HCV infection in patients with advanced liver  
28  
29 disease. *Gastroenterology* 2015;149:649-659.

30  
31 [16] Charlton M, Gane E, Manns MP, Brown RS Jr, Curry MP, Kwo PY, et al. Sofosbuvir  
32  
33 and ribavirin for treatment of compensated recurrent hepatitis C virus infection after liver  
34  
35 transplantation. *Gastroenterology* 2015;148:108-117.

36  
37 [17] Pellicelli AM, Montalbano M, Lionetti R, Durand C, Ferenci P, D'Offizi G, et al.  
38  
39 Sofosbuvir plus daclatasvir for post-transplant recurrent hepatitis C: potent antiviral activity  
40  
41 but no clinical benefit if treatment is given late. *Dig Liver Dis* 2014;46:923-927.

42  
43 [18] Kobayashi T, Hige S, Terashita K, Nakai M, Horimoto H, Sho T, et al. Anemia and  
44  
45 thrombocytosis induced by ribavirin monotherapy in patients with chronic hepatitis C. *J*  
46  
47 *Gastroenterol* 2012;47:1228-1237.

48  
49 [19] Poynard T, McHutchison J, Manns M, Trepo C, Lindsay K, Goodman Z, et al. Impact  
50  
51 of pegylated interferon alfa-2b and ribavirin on liver fibrosis in patients with chronic  
52  
53 hepatitis C. *Gastroenterology* 2002;122:1303-1313.  
54  
55  
56  
57  
58  
59  
60

1  
2  
3 [20] EASL-ALEH clinical practice guidelines: non-invasive tests for evaluation of liver  
4 disease severity and prognosis. European Association for the Study of the Liver. J Hepatol  
5 2015;63:237-264.  
6  
7

8  
9 [21] D'Ambrosio R, Aghemo A, Fraquelli M, Rumi MG, Donato MF, Paradis V, et al. The  
10 diagnostic accuracy of Fibroscan® for cirrhosis is influenced by liver morphometry in HCV  
11 patients with a sustained virological response. J Hepatol 2013;59:251-256.  
12  
13

14 [22] Foster GR, Irving WL, Cheung MC, Walker AJ, Hudson BE, Verma S, et al. HCV  
15 Research UK. Cohort study of the impacts of direct acting antiviral therapy in patients with  
16 chronic hepatitis C and decompensated cirrhosis. J Hepatol 2016;64:1224-1231.  
17  
18  
19  
20  
21  
22  
23  
24  
25  
26  
27  
28  
29  
30  
31  
32  
33  
34  
35  
36  
37  
38  
39  
40  
41  
42  
43  
44  
45  
46  
47  
48  
49  
50  
51  
52  
53  
54  
55  
56  
57  
58  
59  
60

**Table 1. Demographic and baseline characteristics of recipients and donors**

<b>Recipient features (N=126)</b>	
<b>Age (years)</b>	60 [54-66]
<b>Male</b>	99 (78.6%)
<b>Body Mass Index (Kg/m<sup>2</sup>)</b>	24.6 [22.5–26.9]
<b>25-OH vitamin D<sup>A</sup> (&lt;20 ng/mL)</b>	71 (59.2%)
<b>HLA-DRB1*11 positive phenotype</b>	34 (27.0%)
<b><i>IL28B</i> genotype</b>	
rs 12979860 C/C	32 (25.4%)
rs 8099917 T/T	59 (46.8%)
<b>Previous antiviral treatment</b>	83 (65.9%)
<b>Antiviral treatment after LT</b>	57 (45.2%)
<b>Immunosuppressive drug</b>	
CsA – Tac – MMF – other	50 (39.7%) – 56 (44.4%) – 56 (44.4%) – 5 (4.0%)
<b>Time since LT (years)</b>	4.3 [2.3–7.2]
<b>HCV genotype</b>	
1a - 1b - 1 (unspecified)	17 (13.5%) – 70 (55.6%) – 6 (4.8%)
2 - 3 – 4	6 (4.8%) – 21 (16.7%) – 6 (4.8%)
<b>Baseline HCV RNA (log<sub>10</sub> IU/mL)</b>	6.40 [6.10–6.66]
≥ 10 <sup>6</sup> IU/mL	101 (80.2%)
<b>Corresponding Metavir fibrosis stage</b>	
F3 – F4	30 (23.8%) – 96 (76.2%)
<b>Haemoglobin (g/dL)</b>	12.8 [11.4–14.4]
<b>Platelets count (10<sup>9</sup>/L)</b>	99 [67-140]
<b>Liver enzymes (IU/L)</b>	
Aspartate aminotransferase	60 [40-101]
Alanine aminotransferase	69 [45-116]
γ-Glutamyltransferase	75 [41-152]

<b>Total bilirubin</b> (mg/dL)	1.1 [0.7–1.8]
<b>INR</b>	1.07 [0.98–1.22]
<b>Albumin</b> (g/dL)	3.9 [3.6–4.3]
<b>eGFR*</b> (mL/min)	70 [54-87]
<b>MELD score<sup>§</sup></b>	10 [8-13]
<b>Child class<sup>§</sup> A – B – C</b>	65 (67.7%) – 27 (28.1%) – 4 (4.2%)
<b>Ascites<sup>§</sup></b>	38 (39.6%)
<b>Encephalopathy<sup>§</sup></b>	12 (12.5%)
<b>Presence of varices<sup>§</sup></b>	26 (27.1%)
<b>Donor features (N=126)</b>	
<b>Age</b> (years)	62 [50–71]
<b>Male</b>	69 (54.8%)
<b>Split liver graft</b>	2 (1.6%)
<b>Graft quality<sup>^</sup> suboptimal<sup>#</sup></b>	57 (47.5%)
<b>Cold ischemia time</b> (minutes)	486 [424–545]
<b>Donor/Recipient match</b>	
<b>D-MELD</b>	982 [666–1303]

Numerical variables are expressed as median [Q1-Q3]

Categorical variables are expressed as numbers (prevalence, %)

<sup>^</sup>6 missing data

<sup>\*</sup>Chronic Kidney Disease Epidemiology Collaboration equation

<sup>§</sup>In 96 cirrhotic patients

<sup>#</sup>According to Salizzoni et al, Transpl Int 2003

Abbreviations: CsA, cyclosporine; D-MELD, donor age x recipient MELD; eGFR, estimated glomerular filtration rate; F, fibrosis; HCV, hepatitis C virus; HLA, human leukocyte antigen; *IL28B*, *Interleukin 28B*; LT, liver transplantation; MELD, Model for End-stage Liver Disease; MMF, mycophenolate mofetil; Tac, tacrolimus.

**Table 2. Liver function tests and non-invasive markers of fibrosis at baseline and at the end of therapy in responder versus relapser cirrhotic patients**

<b>BASELINE</b>	<b>Responders (n=72)</b>	<b>Relapsers (n=20)</b>	<b>p<sup>#</sup></b>
<b>APRI</b>	1.92 [1.00-3.27]	3.27 [1.72-5.51]	0.007
<b>FIB-4</b>	5.95 [3.60-11.10]	8.45 [7.17-16.08]	0.009
<b>Liver stiffness* (kPa)</b>	20.4 [16.0-33.8]	28.0 [21.6–44.4]	0.01
<b>Child score</b>	5 [5-6]	7 [6-8]	0.002
<b>MELD score</b>	10 [8-12]	13 [9-16]	0.02
<b>EOT</b>	<b>Responders (n=72)</b>	<b>Relapsers (n=20)</b>	<b>p<sup>#</sup></b>
<b>APRI</b>	0.46 [0.29-0.76]	0.83 [0.57-1.22]	0.02
<b>FIB-4</b>	3.25 [1.90-4.30]	4.80 [3.71-7.42]	0.01
<b>Liver stiffness* (kPa)</b>	17.5 [11.1-25.7]	23.4 [18.3-39.0]	0.09
<b>Child score</b>	5 [5-6]	6 [5-7]	0.19
<b>MELD score</b>	11 [9-14]	13 [11-17]	0.05

Numerical variables are expressed as median [Q1-Q3]

\*Liver stiffness was available at baseline in 51 responders and 17 relapsers; at EOT in 51 responders and 13 relapsers

<sup>#</sup>p-values calculated according to Wilcoxon test for paired data

Abbreviations: APRI, AST to platelet ratio index; EOT, end of therapy; kPa, kilopascal; MELD, Model for End-stage Liver Disease.



**Table 3. Clinical and biochemical variations in long-term responder cirrhotic patients**

	<b>Baseline</b>	<b>EOT</b>	<b>SVR12</b>	<b>SVR24</b>	<b>SVR48</b>	<b>p<sup>^</sup></b>	<b>p<sup>§</sup></b>
	<b>(N=72)</b>	<b>(N=72)</b>	<b>(N=72)</b>	<b>(N=72)</b>	<b>(N=71<sup>°</sup>)</b>		
<b>AST (IU/L)</b>	69 [47-97]	23 [20-28]	27 [22-35]	24 [18-32]	21 [18-28]	<0.001	0.13
<b>ALT (IU/L)</b>	59 [41-90]	15 [11-23]	18 [14-27]	16 [12-25]	17 [12-27]	<0.001	0.02
<b>Bilirubin (mg/dL)</b>	1.1 [0.8-1.5]	1.4 [1.1-2.2]	0.9 [0.6-1.2]	0.8 [0.6-1.2]	0.9 [0.6-1.1]	<0.001	0.74
<b>INR</b>	1.06 [0.99-1.20]	1.11 [1.07-1.24]	1.09 [1.02-1.24]	1.08 [1.02-1.22]	1.11 [1.07-1.23]	0.03	0.007
<b>Albumin (g/dL)</b>	3.9 [3.6-4.3]	4.1 [3.8-4.4]	4.1 [3.7-4.3]	4.2 [3.8-4.4]	4.3 [4.0-4.5]	0.02	0.31
<b>Creatinine (mg/dL)</b>	1.1 [0.9-1.3]	1.1 [0.9-1.3]	1.0 [0.9-1.3]	1.1 [1.0-1.3]	1.1 [0.9-1.3]	0.36	0.12
<b>eGFR* (mL/min)</b>	68 [52-84]	64 [52-80]	67 [53-83]	63 [52-78]	62 [52-82]	0.26	0.25
<b>Platelets (10<sup>9</sup>/L)</b>	99 [65-134]	131 [86-185]	99 [64-133]	108 [72-142]	112 [68-144]	0.002	0.01
<b>Ascites</b>	22 (30.6%)	12 (16.7%)	8 (11.1%)	7 (9.7%)	7 (9.9%)	0.003	>0.99
<b>Encephalopathy</b>	5 (6.9%)	4 (5.6%)	3 (4.2%)	3 (4.2%)	2 (2.8%)	0.72	>0.99
<b>MELD score</b>	10 [8-12]	11 [9-14]	9 [8-11]	9 [8-11]	10 [8-11]	0.34	0.92
<b>Child score</b>	5 [5-6]	5 [5-6]	5 [5-6]	5 [5-5]	5 [5-5]	<0.001	0.68

Numerical variables are expressed as median [Q1-Q3]

Categorical variables are expressed as numbers (prevalence,%)

p-values calculated according to Wilcoxon test for paired data for numerical variables and according to Fisher's exact test for categorical variables

<sup>°</sup>71 out of 72 cured patients reached 48 weeks of follow-up after therapy

\*Chronic Kidney Disease Epidemiology Collaboration equation

<sup>^</sup>Baseline versus SVR24

<sup>§</sup>SVR24 versus SVR48

Abbreviations: ALT, alanine aminotransferase; AST, aspartate aminotransferase; eGFR, estimated glomerular filtration rate; EOT, end of therapy; MELD, Model for End-stage Liver Disease; SVR12, sustained virological response at week 12 after end of therapy; SVR24, sustained virological response at week 24 after end of therapy; SVR48, sustained virological response at week 48 after end of therapy.

**FIGURE LEGENDS**

**Figure 1. Variations of APRI (Panels A and B) and FIB-4 (Panels C and D) from baseline to weeks 24 and 48 after therapy, in F3 and F4 long-term responders.** APRI, AST to platelet ratio index; F, fibrosis according to Metavir; SVR24, sustained virological response at week 24 after therapy; SVR48, sustained virological response at week 48 after therapy.

**Figure 2. Variations of liver stiffness from baseline to weeks 24 and 48 after therapy in F3 (Panel A) and F4 (Panel B) long-term responders.** F, fibrosis according to Metavir; kPa, kilopascal; SVR24, sustained virological response at week 24 after therapy; SVR48, sustained virological response at week 48 after therapy.

Peer Review

1  
2  
3  
4  
5  
6  
7  
8  
9  
10  
11  
12  
13  
14  
15  
16  
17  
18  
19  
20  
21  
22  
23  
24  
25  
26  
27  
28  
29  
30  
31  
32  
33  
34  
35  
36  
37  
38  
39  
40  
41  
42  
43  
44  
45  
46  
47  
48  
49  
50  
51  
52  
53  
54  
55  
56  
57  
58  
59  
60

1  
2  
3 **Impact of Viral Eradication with Sofosbuvir-based Therapy on the Outcome**  
4  
5 **of Post-Transplant Hepatitis C with Severe Fibrosis**  
6  
7

8  
9 Silvia Martini,<sup>1</sup> Marco Sacco,<sup>1</sup> Silvia Strona,<sup>1</sup> Daniele Arese,<sup>1</sup> Francesco Tandoi,<sup>2</sup>

10  
11 Dominic Dell Olio,<sup>3</sup> Davide Stradella,<sup>1</sup> Donatella Cocchis,<sup>2</sup> Stefano Mirabella,<sup>2</sup>

12  
13 Giorgia Rizza,<sup>2</sup> Paola Magistroni,<sup>3</sup> Pamela Moschini,<sup>3</sup> Antonio Ottobrelli,<sup>1</sup>

14  
15 Antonio Amoroso,<sup>3</sup> Mario Rizzetto,<sup>1</sup> Mauro Salizzoni,<sup>2</sup>

16  
17 Giorgio M. Saracco,<sup>1</sup> Renato Romagnoli<sup>2</sup>

18  
19  
20  
21  
22  
23 <sup>1</sup>Gastrohepatology Unit

24  
25 <sup>2</sup>Liver Transplantation Center, General Surgery Unit 2U

26  
27 <sup>3</sup>Regional Transplantation Center, Piedmont

28  
29 AOU Città della Salute e della Scienza di Torino, University of Turin, Italy  
30  
31  
32  
33  
34  
35

36 **Correspondence information**

37  
38 Silvia Martini, MD

39  
40 Gastrohepatology Unit, AOU Città della Salute e della Scienza di Torino

41  
42 Corso Bramante, 88 - 10126 Turin - Italy

43  
44 Phone: +39 011 6335928; fax: +39 011 6334014

45  
46 E-mail address: [sivima21@hotmail.com](mailto:sivima21@hotmail.com)

47  
48  
49  
50  
51 Electronic word count for main body of the manuscript: 44684337.

52  
53 Number of figures: 24. Number of tables: 32.  
54  
55  
56  
57  
58  
59  
60

**List of abbreviations in the order of appearance:**

HCV, hepatitis C virus; LT, liver transplantation; Peg-IFN, pegylated-interferon; SVR, sustained virological response; SVR12, sustained virological response at week 12 after the end of treatment; DAAs, direct-acting antiviral agents; LS, liver stiffness; kPa, kilopascal; EOT, end of therapy; *IL28B*, *Interleukin 28B*; HLA, human leukocyte antigen; AE, adverse event; AST, aspartate aminotransferase; APRI, AST to platelet ratio index; ALT, alanine aminotransferase; SVR24, sustained virological response at week 24 after the end of treatment; ROC, receiver operating characteristic; MELD, Model for End-stage Liver Disease; F, fibrosis; ITT, intention to treat. ~~AUC, area under the curve.~~

**Conflict of interest**

MR is an Advisory Board member for AbbVie, BMS, Gilead, Janssen, MSD.

GMS is an Advisory Board member for AbbVie, Gilead and MSD.

SM is a Regional Advisory Board member for Gilead.

The other Authors who have taken part in this study declared no conflict of interest.

**Financial support**

This work was unsupported.

**ABSTRACT**

*Background & Aims.* Several studies report **have shown** that the new direct-acting-antivirals (DAAs) induce **maintain** viral **their efficacy** eradication also in liver transplant (LT) recipients with severe HCV recurrence. **We determined** The **the clinical** impact of Sofosbuvir/Ribavirin **in LT** therapy **through the changes in**  $\alpha$  liver function and  $\alpha$  fibrosis progression **state** at 24 and 48 weeks after treatment was evaluated.

*Methods.* Between 06/2014 and 07/2015, 126 patients (30 F3, 96 F4 Metavir stage) were enrolled to receive sofosbuvir+ribavirin (24 weeks, 118 patients) or sofosbuvir+simeprevir+ribavirin (12 weeks, 8 patients); treatment was initiated at a median time of 4.3 years from LT. Median follow-up after therapy completion was 461 days.

*Results.* All 30 F3 patients achieved a sustained virological response at week 24 after treatment (SVR24), and showed a distinct amelioration of the AST-to-platelet-ratio-index (APRI), FIB-4 and liver stiffness at elastography by week 24 post-therapy, which were maintained at week 48.

Of the 96 F4 cirrhotic patients, 72 (75%) achieved SVR24 accompanied by a significant improvement of liver function, which was maintained at week 48 (Child B-C 22% baseline, 11% week 24, 7% week 48); APRI, FIB-4, and liver stiffness further improved significantly between week 24 and 48 of follow-up. Among the 77 responders (27 F3, 50 F4) who underwent elastography at baseline and at the end of follow-up, 39 (50.6%; 18 F3, 21 F4) exhibited a regression in fibrosis stage. *Conclusion.* At about one-year from the completion of successful sofosbuvir-based therapy, patients with post-LT HCV and severe fibrosis experienced a long-term liver function improvement accompanied by a regression of fibrosis stage in half of them.

## Keywords

Liver transplantation; HCV recurrence; direct-acting antivirals; non-invasive fibrosis tests; survival.

## Key point box

- 126 patients with post liver transplant HCV and severe fibrosis (30 F3 **and** 96 F4 Metavir) received a sofosbuvir-based antiviral therapy. **The M**edian follow-up after therapy was 461 days.
- All **the** 30 F3 patients and ~~72/96~~ **72 of the 96** (75%) cirrhotics **(75%)** ~~are currently alive and~~ achieved a sustained virological response at week 24 after treatment.
- HCV-**eradicated** ~~cured~~ patients showed a distinct amelioration in AST-to-platelet-ratio-index, FIB-4 and liver stiffness at week 24 after therapy, which persisted in F3 patients and further improved in F4 ones at week 48.
- **In transient elastography, the fibrosis stage regressed in half of the HCV-eradicated**  
~~Overall, a fibrosis stage regression evaluated by transient elastography, occurred in half of the patients at week 48 after therapy.~~

## INTRODUCTION

Hepatitis C virus (HCV) is the leading cause of cirrhosis and hepatocellular carcinoma and the most common indication for liver transplantation (LT) in Europe and United States [1].

Infection recurs almost universally in patients who have detectable serum HCV RNA at LT and it is the main cause of graft failure and patient death [2]. Successful HCV eradication is associated with reduced disease progression, and improved liver allograft and recipient survival [3].

Until few years ago, pegylated-interferon (Peg-IFN) with ribavirin was the only treatment for HCV recurrence post-LT; however its use was limited by poor efficacy and beset with significant adverse events [4]. The addition of first generation protease inhibitors, boceprevir and telaprevir, doubled the rates of sustained virological response (SVR) at 12 weeks (SVR12) in HCV genotype 1, but was aggravated by unacceptable toxicity and drug-drug interactions [5]. A major breakthrough has been the advent of second generation direct-acting antiviral agents (DAAs), which interact with different HCV functions and have markedly improved antiviral efficacy and tolerability [6], leading to HCV eradication also in patients with severe recurrent hepatitis C after LT.

The therapeutic potential of the prototype sofosbuvir was quickly perceived; the combinations of sofosbuvir with ribavirin ± Peg-IFN and of sofosbuvir with simeprevir ± ribavirin were reported in early international studies to achieve 59% to 88% SVR12 rates [7, 8]. A sofosbuvir compassionate use program was activated in Italy between June 2014 and December 2014; simeprevir became available later, in February 2015.

The primary target of early studies was the virologic efficacy and the tolerability of DAAs in order to meet the urgent demand from transplant patients. In this single-center study, we report the clinical outcome of therapy in a large series of patients with severe fibrosis due to hepatitis C recurrence; the majority were treated with sofosbuvir plus ribavirin, a minority with sofosbuvir plus simeprevir plus ribavirin. We focused on the changes in liver function

1  
2  
3 parameters and in non-invasive tests of fibrosis up to 48 weeks after the end of successful  
4  
5 treatment. These studies had short follow-ups and did not deal with the long-term clinical-  
6  
7 outcome of LT patients who had responded to therapy.  
8

9  
10 In this single-center study, we collected a large series of patients with post-transplant  
11  
12 severe fibrosis due to hepatitis C recurrence; the majority were treated with sofosbuvir plus  
13  
14 ribavirin, a minority with sofosbuvir plus simeprevir plus ribavirin. We report the virologic-  
15  
16 results and focus on the changes observed in liver function parameters and in non-  
17  
18 invasive tests of fibrosis up to 48 weeks after the end of successful therapy.  
19

## 20 21 22 23 PATIENTS AND METHODS

### 24 25 Study population

26  
27 Out of 273 surviving HCV recipients with persistent viremia following LT performed in Turin  
28  
29 (Italy) since January 2000, between June 2014 and May 2015 we enrolled 126 patients  
30  
31 with recurrent hepatitis C who exhibited a Metavir staging score  $\geq 3$ , and a creatinine  
32  
33 clearance  $\geq 30$  mL/min. The severity of fibrosis was determined within 6 months from  
34  
35 treatment by liver biopsy or by transient elastography [liver stiffness (LS) cut-off values of  
36  
37 9.5 kilopascal (kPa) and 12.5 kPa corresponding, respectively, to Metavir F3 and F4  
38  
39 fibrosis stages] [9]. Only transient elastography measurements with a success rate of at  
40  
41 least 60% were considered valid.  
42  
43

44  
45 From June 2014 to December 2014 patients were treated in the context of the sofosbuvir  
46  
47 national compassionate use program; each treatment was approved by the local ethic  
48  
49 committee (Comitato Etico Interaziendale A.O.U. Città della Salute e della Scienza di  
50  
51 Torino—A.O. Ordine Mauriziano—A.S.L. TO1) and the patients provided written informed  
52  
53 consent. By the Italian legislation, Regional Transplantation Centers are the lawful  
54  
55 custodians of the recipient/donor biomedical data for clinical and for research purposes. All  
56  
57 study procedures were compliant with the ethical standards of the 2000 Declaration of  
58  
59  
60



1  
2  
3 Helsinki as well as the Declaration of Istanbul 2008.

4  
5 The demographic and baseline characteristics of the study population and their donors are  
6  
7 shown in Table 1.  
8  
9

### 10 11 **Study protocol**

12  
13 The treatment regimens consisted of sofosbuvir 400 mg once daily and ribavirin twice daily  
14  
15 (at a dose of 1000 mg daily with body weight <75 kg, or 1200 mg daily with body weight  
16  
17 ≥75 kg, adjusted according to haemoglobin level and renal function) for 24 weeks, or  
18  
19 sofosbuvir 400 mg once daily, ribavirin twice daily (weight-based) and simeprevir 150 mg  
20  
21 once daily for 12 weeks. Epoetin-alfa at 20,000-40,000 units/week was administered  
22  
23 subcutaneously to patients with haemoglobin levels <10 g/dL.  
24  
25

26  
27 Patients underwent clinical and laboratory assessment [HCV RNA by polymerase chain  
28  
29 reaction technique with AmpliPrep<sup>®</sup>/COBAS TaqMan<sup>®</sup> HCV version 2 (Roche Molecular  
30  
31 Systems, Inc., Branchburg, NJ, US), complete blood cell count, liver and kidney function  
32  
33 tests, serum electrolytes, serum levels of immunosuppressive drugs] at baseline, weekly  
34  
35 for the first month, then monthly while on treatment and at 1, 3, 6 and 12 months after the  
36  
37 end of therapy (EOT). No viral resistance monitoring was performed.  
38  
39

40  
41 At baseline, all patients were tested for HCV genotype (reverse hybridization line probe  
42  
43 assay, INNO-LIPA, Innogenetics, Ghent, Belgium), *Interleukin 28B (IL28B)* rs12979860  
44  
45 C/T and rs8099917 T/G polymorphisms (Custom TaqMan<sup>®</sup> Allelic Discrimination Kit, Life  
46  
47 Technologies Applied Biosystems<sup>®</sup>, Thermo Fisher Scientific, Waltham, MA, US) and  
48  
49 serum 25-OH vitamin D level (fully automated chemiluminescence immunoassay, ADVIA  
50  
51 Centaur<sup>®</sup> Vitamin D Total assay, Siemens Healthcare Diagnostics Inc., Tarrytown, NY,  
52  
53 USA). Human leukocyte antigen (HLA) DRB1 typing was collected as well (performed  
54  
55 before transplant, by serology methods until 2006 and then by molecular low-resolution),  
56  
57 paying particular attention to HLA-DRB1\*11 phenotype [10]. Adverse events (AE), drug  
58  
59  
60

1  
2  
3 dose modifications, use of growth factors, blood transfusions, and need for hospitalisation  
4  
5 during treatment were recorded.  
6

7 To assess the changes in fibrosis evolution in virological responders, transient  
8 elastography was performed at 24 and 48 weeks from EOT. The FIB-4 index and the  
9 aspartate aminotransferase (AST) to platelet ratio index (APRI) were calculated at baseline  
10 and 24 and 48 weeks after EOT on fasting blood samples. The following formulas were  
11 used.  $FIB-4 = [age \text{ (years)} \times AST \text{ (IU/L)}] / [platelets \text{ (} 10^9/L) \times alanine \text{ aminotransferase}$   
12  $(ALT)^{1/2} \text{ (IU/L)}]$ ; a score of  $<1.45$  and  $>3.25$  should identify patients who, respectively, have  
13 moderate or significant fibrosis [11].  $APRI = [AST \text{ (IU/L)} / upper \text{ limit of normal (IU/L)}] \times$   
14  $100 / platelets \text{ (} 10^9/L)$ ; severe fibrosis was considered unlikely with an  $APRI \leq 0.7$  and  
15 cirrhosis likely with an  $APRI \geq 1$  [12]. Upper limits of normal for our laboratory are: ALT 40  
16 IU/L for male and 35 IU/L for female; AST 45 IU/L for male and 30 IU/L for female.  
17  
18  
19  
20  
21  
22  
23  
24  
25  
26  
27  
28

29 Survival data were collected on May 31, 2016.  
30  
31  
32

### 33 **Study endpoints**

34  
35  
36 Primary endpoints of the study were survival and clinical outcome of patients who had  
37 achieved a sustained virological response at week 24 after EOT (SVR24). To this purpose  
38 we considered the variations from baseline to weeks 24 and 48 of: i) liver function  
39 parameters; ii) non-invasive tests of fibrosis (APRI, FIB-4, transient elastography).  
40  
41  
42  
43  
44

45 Secondary endpoint was the safety of antiviral therapy.  
46  
47  
48

### 49 **Statistical analysis**

50  
51  
52 Categorical variables were represented as n (%) and compared using Fisher's exact test.  
53  
54 Quantitative variables were shown as median (25<sup>th</sup> - 75<sup>th</sup> percentiles) and were compared,  
55  
56 as appropriate, by t-test (parametric data), by Mann-Whitney U test (non parametric,  
57  
58 unpaired data) or by Wilcoxon signed-rank test (non parametric, paired data). Receiver  
59  
60

operating characteristic (ROC) curve analyses were performed to obtain the best possible Model for End-stage Liver Disease (MELD) **and** Child scores., ~~and non-invasive fibrosis tests thresholds,~~ in order to identify beforehand those patients who achieved SVR24. Data elaboration was performed using Prism<sup>®</sup> version 6 (GraphPad Software Inc., La Jolla, CA, US) and IBM SPSS version 21 (New York, NY, US).

## RESULTS

Of the 126 patients who entered the study, 118 received sofosbuvir and ribavirin for 24 weeks and 8 were treated with sofosbuvir, simeprevir and ribavirin for 12 weeks. In the former group, 116 completed the full course of therapy; 2 patients died while on treatment (on day 93 and 151), 4 following the EOT (on day 41, 143, 166 and 328). The median follow-up of the surviving patients after EOT was 461 days (range 278-515 days).

All patients except 1 were Caucasian. Forty-seven percent of the grafts came from donors  $\geq 65$  year old and/or with macrovesicular steatosis  $\geq 15\%$  (suboptimal graft) [13], 8% from hepatitis B core antibody positive donors and 7.1% from HCV antibody positive **donors**.

Two patients had been treated with a first-generation HCV protease-inhibitor before LT. The baseline stage of hepatic fibrosis (F) was evaluated in 28 patients by liver biopsy according to Metavir score (3 F3, 25 F4), in 12 patients by combined liver biopsy and transient elastography (12 F4) and in 86 patients by transient elastography only (27 F3 and 59 F4). The median LS was: 11 kPa [interquartile 10.1-12] in the F3 group and 21.8 kPa [17-34.8] in the F4 group. Thirty-four patients had diabetes mellitus, 33 were insulin dependent at the beginning of antiviral therapy.

All **The** 8 patients treated with sofosbuvir, simeprevir and ribavirin were immunosuppressed with tacrolimus. The HCV genotype was 1a in two and 1b in six. Seven patients had fibrosis Metavir F3 and 1 F4 (Child A5, MELD 7), with median HCV RNA 6.56 log<sub>10</sub> IU/mL.

Further demographic and baseline characteristics are presented in **Table 1**.

Four weeks after antiviral therapy was started, a statistically significant decrease was observed in the AST and ALT median values from 67 IU/L [45-114] to 24 IU/L [18-33],  $p < 0.001$ , and 58 IU/L [40-100] to 18 IU/L [13-26],  $p < 0.001$ , respectively. Transaminase values normalized (**Figure S1**) and remained normal throughout the follow-up in all eradicated patients but nine, whose **had persistently elevated enzymes** transaminases ~~persisted slightly elevated~~ (less than twice upper limit of normal). Six of these latter patients underwent a liver biopsy which showed minimal histological changes without evidence of rejection. After 1 week of therapy, the median decrease in HCV RNA was ~~3.87- $\log_{10}$  IU/mL in F3 and 3.55  $\log_{10}$  IU/mL in F4 group ( $p=0.002$ ) (Figures S2 and S3).~~ The overall SVR24 rate was 81.0% (102/126 patients, 95% confidence interval 73.2-86.9) by intention to treat (ITT) analysis (**Figure 1**). **The** SVR24 rate was significantly higher in F3 ~~patients~~ compared with F4 **patients** ones (30/30, 100% vs 72/96, 75%,  $p=0.001$ ); ~~and in~~ patients tolerating  $\geq 80\%$  of the full weight-based ribavirin dose ( $n=104$ ) compared with those tolerating  $< 80\%$  of the dose ( $n=22$ ) (85.6% vs 59.0%,  $p=0.01$ ) **and in patients with preserved liver function (MELD  $\leq 11$  and Child  $\leq A6$ , according to ROC curves) (Figure S2).** **Two cirrhotic patients who became HCV RNA negative on therapy, died for multiresistant bacteria-related septic shock, two others died of liver failure after the EOT: one, 68 years old, had achieved a sustained virological response at week 4 after EOT, the other, 44 years old, had achieved SVR12 and was on the list for retransplantation.** Twenty patients **experienced a** relapsed **of HCV** (17 at week 4, 2 at week 12 and 1 at week 24 of follow-up; the latter cleared HCV RNA at week 4 on therapy and normalized transaminases at week 1). All relapsers were cirrhotic (9 patients Child A, 10 Child B and 1 Child C). They had a median pre-treatment MELD of 13 and had received sofosbuvir and ribavirin; a **the** majority of them were *IL28B* non-C/C genotype (80%) and experienced to previous antiviral therapy (65%) (**Tables S1 and S2**). **Basal median LS was 28.0 kPa in**

1  
2  
3 the relapsers and 20.4 kPa in the cirrhotics who achieved viral eradication ( $p=0.01$ ). APRI  
4  
5 and FIB-4 were significantly higher in relapsers compared with responders at baseline  
6  
7 (3.27 vs 1.92 and 8.45 vs 5.95, respectively;  $p < 0.01$  for both) (Table 2).

8  
9 From baseline to EOT, their median Child improved in relapsers from B7 to A6 ( $p=0.014$ ),  
10 while the median MELD remained 13. Two patients died at 138 and 160 days after relapse  
11 due to progressive end-stage liver disease. Seventeen patients started a second treatment  
12 course, at a median of 17 weeks (range 5-43 weeks) from the relapse. No significant  
13 variation in liver function tests was observed between relapse and retreatment. (Table S2).  
14  
15 One patient refused retreatment.

16  
17 Two cirrhotic patients who were HCV RNA negative on therapy, died for multiresistant  
18 bacteria-related septic shock; 2 others died of liver failure after the EOT: one, 68 years old,  
19 had achieved a sustained virological response at week 4 after EOT, and one, 44 years old,  
20 had achieved SVR12 and was on the list for retransplantation.

21  
22 In the cirrhotic patients, significant predictors of SVR24 at univariate analysis (Figure 2)  
23 were MELD  $\leq 11$ , Child  $\leq A6$  and LS  $\leq 26$  kPa. The cut-offs were chosen according to ROC  
24 curves: area under the curve (AUC) for MELD 0.723,  $p=0.001$ ; Child 0.759,  $p < 0.001$  and  
25 LS 0.751,  $p=0.002$  (Figures S4 and S5).

26  
27 Basal median LS was 28.0 kPa in the relapsers and 20.4 kPa in the cirrhotics who  
28 achieved viral eradication ( $p=0.01$ ). APRI and FIB-4 at baseline were significantly higher in  
29 relapsers compared with responders (3.27 vs 1.92 and 8.45 vs 5.95, respectively;  $p < 0.01$   
30 for both) (Table S3).

31  
32 Overall, in the cirrhotic group, between baseline and the last available follow-up, 20  
33 patients (20.8%) showed had a stable MELD from baseline to the last available follow-up  
34 visit and 43 (44.8%) improved the score of at least 1 point; 46 patients (47.9%) showed had  
35 a stable Child and 35 (36.5%) improved the score of at least 1 point.  
36  
37  
38  
39  
40  
41  
42  
43  
44  
45  
46  
47  
48  
49  
50  
51  
52  
53  
54  
55  
56  
57  
58  
59  
60

### Clinical outcomes in patients who achieved viral eradication

In the F3 patients, liver and kidney function remained normal (**Table S34**). APRI and FIB-4 were significantly lower at week 24 after EOT, compared with pre-treatment median values (1.07 to 0.41,  $p < 0.001$ , and 3.26 to 2.08,  $p < 0.001$ , respectively); these indexes remained stable in the 28 patients who reached 48 weeks of follow-up (**Figure 13, Panels A and C**). LS (available in 27 patients) improved from 11.0 kPa [10.1-12.0] to 7.7 kPa [6.6-10.2],  $p < 0.001$ , at week 24 and remained stable at week 48 (7.8 kPa [7.0-10.6],  $p = 0.65$  vs week 24) (**Figure 24, Panel A**). In 18 patients (66.7%) LS decreased below the 9.5 kPa cut-off for F3 at week 48.

At week 24 after EOT, the 72 F4 patients who **had** achieved viral eradication **eradicated HCV**, **showed** **exhibited** a significant improvement in platelets count, bilirubin and albumin levels, degree of ascites and Child score at pair wise comparison with baseline values [the rate of Child A was 77.8% (56/72) at baseline and 88.9% (64/72) at week 24 of follow-up]; kidney function and MELD score did not vary. Seventy-one of the 72 responders reached 48 weeks of follow-up and showed a further significant increase in platelets count; albumin, ascites, and Child score [93% (66/71) Child A] remained stable (**Table 32**).

Both APRI and FIB-4 decreased significantly at week 24 after EOT compared with baseline values (1.92 to 0.55,  $p < 0.001$ , and 5.95 to 3.15,  $p < 0.001$ , respectively), and further decreased at week 48, compared with 24 week values (APRI 0.51,  $p < 0.001$ ; FIB-4 3.12,  $p < 0.001$ ) (**Figure 13, Panels B and D**). Fifty-one of the 72 patients underwent transient elastography at baseline and at SVR24; the median LS improved from 20.4 kPa [16.0-33.8] to 17.5 kPa [11.1-25.7],  $p < 0.001$  (**Figure 24, Panel B**). Fifty patients underwent transient elastography also at week 48 after EOT; the median LS (14.0 kPa [10.0-21.3]) significantly decreased compared with week 24 ( $p = 0.001$ ); in 21 of them (42%) the LS fell below the 12.5 kPa cut-off.

1  
2  
3 As evaluated by transient elastography in F3-F4 patients pooled together, **in** 39 (50.6%)  
4 of the 77 (50.6%) **F3-F4** responders **pooled together**, the fibrosis stage had regressed in  
5 transient elastography by at least one Metavir stage at week 48 after EOT.  
6  
7

8  
9 No patients developed hepatocellular carcinoma in the period of observation.  
10

11 Thirteen out of the 20 cirrhotic responders with large oesophageal varices at baseline,  
12 underwent a second 48 week follow-up endoscopy; **no change in the size of varices was**  
13 **observed**. ~~which showed no changes.~~  
14  
15  
16  
17  
18  
19

## 20 21 Safety

22 AE are summarized in **Table S45**.  
23

24 During therapy, seven cirrhotic patients were hospitalised: two patients for grade 3  
25 encephalopathy, two for severe variceal bleeding and three for sepsis in decompensated  
26 liver disease. Six cirrhotic patients died of complications of end-stage liver disease,  
27 unrelated to antiviral therapy.  
28  
29

30 Three patients discontinued ribavirin for less than 1 week due to diffuse macular skin rash  
31 and no one discontinued therapy permanently due to AE.  
32  
33

34 Because of anemia and/or compromised renal function, 34.1% (43/126) of the patients  
35 were treated with a non weight-based escalating dose of ribavirin, starting from 400 mg  
36 daily and 11.1% (14/126) required dosage reduction; however, 82.5% (104/126) received  
37 at least 80% of the weight-based dosage. Median daily ribavirin dose was 1000 mg from  
38 baseline to EOT and median haemoglobin level declined from 12.8 g/dL at baseline to 10.9  
39 g/dL at week 4 and remained stable around 10.8 g/dL from week 8 to week 24 (**Figure**  
40 **S36**). In 60 patients (47.6%) we measured at least one haemoglobin level of less than 10  
41 g/dL and in 12 (9.5%) of less than 8.5 g/dL; 45 patients (35.7%) received epoetin and 14  
42 (11.1%) required blood transfusion.  
43  
44  
45  
46  
47  
48  
49  
50  
51  
52  
53  
54  
55  
56  
57  
58  
59  
60

1  
2  
3 Minimal dose adjustments in the calcineurin inhibitors were required throughout the  
4  
5 treatment in 64% of the patients (27% increased, 12% decreased and 25% both  
6  
7 decreased and increased the dose) to maintain stable trough levels. No biopsy-proven  
8  
9 acute rejection occurred.  
10

## 11 12 13 **DISCUSSION**

14  
15  
16 The advent of highly effective and well tolerated DAAs against the HCV is revolutionizing  
17  
18 the outcome of LT for hepatitis C. In this setting, early treatment after surgery is expected  
19  
20 to be the most cost-effective strategy for patients who are still viremic at LT [10, 14],  
21  
22 nevertheless DAAs are providing rescue also to residual cohorts of re-infected transplant  
23  
24 recipients who developed advanced HCV disease [7, 8, 15]. When sofosbuvir became  
25  
26 available in Italy in June 2014, these patients received priority access to the new therapy  
27  
28 through a compassionate use program. A majority were treated with sofosbuvir and  
29  
30 ribavirin; a small minority received the combination of sofosbuvir, ribavirin and simeprevir,  
31  
32 which became available almost at the end of the enrollment period.  
33  
34

35  
36 After a median follow-up of 461 days from EOT, 102 (81%) of our 126 patients are free of  
37  
38 HCV and clinically stable. SVR was obtained also in a high proportion (95%) of the 21  
39  
40 patients with genotype 3, though this genotype is the most difficult to treat in the ordinary  
41  
42 clinical context. All treatment failures, excluding deceased patients, were due to virologic  
43  
44 relapses and all relapses, except one, occurred within the first 12 weeks after EOT.  
45  
46

47  
48 Response to therapy was independent from gender, HCV genotype, basal viremia, rapid-  
49  
50 virologic response, HLA-DRB1\*11 phenotype and *IL28B* polymorphisms, while it was  
51  
52 influenced by the stage of fibrosis and by intolerance to ribavirin: 75% of the patients with  
53  
54 cirrhosis achieved an SVR compared to 100% of those with F3 fibrosis and among the 22  
55  
56 patients who tolerated less than 80% of the optimal ribavirin dosage, only 59% obtained an  
57  
58 SVR. As expected, anemia was the main complication of ribavirin.  
59  
60



1  
2  
3 Considering the higher proportion of patients with cirrhosis in this study, our results appear  
4 better than the 70% rate of SVR12 reported by Charlton [16] in a smaller series of 40  
5 patients recruited in a multicenter study, of whom only 40% were cirrhotics; possibly the  
6 management of the patients in a single center adopting a common approach may lead to  
7 more uniform results. Though our results are distinctly better than the 43% response  
8 reported by Forns et al [7], their series included a mixed population of compensated and  
9 decompensated cirrhotics in which a substantial number of patients had a higher MELD  
10 score and more severe disease than our patients.  
11

12 There were in our study six deaths due to complications of the liver disease, two occurring  
13 in patients who had cleared the HCV. The deceased patients had a higher MELD score,  
14 ranging from 14 to 19, in confirmation that a deteriorated liver function may prevent clinical  
15 improvement despite the antiviral efficacy of treatment [17]; vice versa a preserved liver  
16 function expressed by a Child Pugh score  $\leq 6$  and a MELD  $\leq 11$  was associated with SVR.  
17 Unfortunately, the threshold that may predict the lack of a clinical advantage despite the  
18 efficacy of therapy is difficult to establish [17].  
19

20 In our 72 cirrhotic responders, SVR24 was associated with the normalization of  
21 aminotransferases in almost all patients, accompanied by a decrease of bilirubin and an  
22 increase of albumin levels; renal function deteriorated in none and ascites disappeared in  
23 three quarters of cases. The platelet count increased throughout therapy, presumably  
24 related to the administration of epoetin and to an increased production of endogenous  
25 erythropoietin, secondary to ribavirin-induced anemia [18]. The platelet number diminished  
26 to baseline values at week 12 post-therapy, but then climbed back significantly at week 24  
27 and further increased at week 48; this trend and the regression of ascites may **might** be  
28 expression of an initial reduction in portal hypertension.  
29

30 The APRI and FIB-4 indexes significantly improved throughout the follow-up; as  
31 aminotransferases and platelets are major components for their calculation, the  
32  
33  
34  
35  
36  
37  
38  
39  
40  
41  
42  
43  
44  
45  
46  
47  
48  
49  
50  
51  
52  
53  
54  
55  
56  
57  
58  
59  
60

1  
2  
3 improvement can be explained by the normalization of the enzymes and by the increase in  
4  
5 the platelet count.

6  
7 Transient elastography LS values were significantly reduced at the 6<sup>th</sup> month of follow-up;  
8  
9 this early improvement presumably resulted for a large extent by ~~the~~ **from** the decrease of  
10  
11 inflammation and edema which may artificially alter elastography. Interestingly, however,  
12  
13 LS values showed a further significant decrease during the subsequent 6 month follow-up  
14  
15 in patients with cirrhosis. Considering that artefacts due to liver inflammation could no  
16  
17 longer be implicated, it is plausible that the observed continuing decrease of LS after the  
18  
19 SVR24 corresponded to a genuine progressive reduction of fibrosis. In agreement with  
20  
21 previous findings of fibrosis reversion in non-transplant patients with HCV cirrhosis who  
22  
23 responded to interferon-therapy [19-21], our data would suggest that regression of fibrosis  
24  
25 starts early and may become already measureable by transient elastography in the first  
26  
27 year after therapy.  
28  
29  
30

31  
32 In conclusion, our experience in a large single center LT cohort of advanced recurrent HCV  
33  
34 disease, confirms the major therapeutic impact of sofosbuvir with ribavirin, extending also  
35  
36 to difficult-to-treat genotype 3 patients.  
37

38  
39 We acknowledge that a new wave of more efficacious DAA combinations is now available  
40  
41 to treat hepatitis C [8, 15, 22]. Nevertheless, this study provides a paradigm of the  
42  
43 excellent clinical outcome **and of the potential for disease reversibility after** ~~that can be~~  
44  
45 ~~expected with~~ successful DAA therapy in the transplant setting.  
46  
47  
48

## 49 **ACKNOWLEDGEMENTS**

50  
51 No ~~specific~~ funding was obtained for this study.  
52  
53  
54  
55  
56  
57  
58  
59  
60

**REFERENCES**

- [1] Adam R, Karam V, Delvart V. Evolution of indications and results of liver transplantation in Europe. A report from the European Liver Transplant Registry (ELTR). *J Hepatol* 2012;57:675-688.
- [2] Forman LM, Lewis JD, Berlin JA, Feldman HI, Lucey MR. The association between hepatitis C infection and survival after orthotopic liver transplantation. *Gastroenterology* 2002;122:889–896.
- [3] Crespo G, Marino Z, Navasa M, Forns X. Viral hepatitis in liver transplantation. *Gastroenterology* 2012;142:1373-1383.
- [4] Berenguer M. Systematic review of the treatment of established recurrent hepatitis C with pegylated interferon in combination with ribavirin. *J Hepatol* 2008;49:274-287.
- [5] Coilly A, Roche B, Dumortier J, Leroy V, Botta-Fridlund D, Radenne S, et al. Safety and efficacy of protease inhibitors to treat hepatitis C after liver transplantation: a multicenter experience. *J Hepatol* 2014;60:78-86.
- [6] EASL recommendations on treatment of hepatitis C 2015. *J Hepatol* 2015;63:199-236.
- [7] Forns X, Charlton M, Denning J, McHutchison JG, Symonds WT, Brainard D, et al. Sofosbuvir compassionate use program for patients with severe recurrent hepatitis C after liver transplantation. *Hepatology* 2015;61:1485-1494.
- [8] Brown RS Jr, O'Leary JG, Reddy KR, Kuo A, Morelli GJ, Burton JR Jr, et al. Interferon-free therapy for genotype 1 hepatitis C in liver transplant recipients: real world experience from HCV-TARGET. *Liver Transpl* 2016;22:24-33.
- [9] Castera L, Forns X, Alberti A. Non-invasive evaluation of liver fibrosis using transient elastography. *J Hepatol* 2008;48:835-847.
- [10] Romagnoli R, Martini S, Tandoi F, Dell Olio D, Magistroni P, Bertinetto FE, et al. Early reduced liver graft survival in hepatitis C recipients identified by two combined

1  
2  
3 genetic markers. *Transpl Int* 2016; doi: 10.1111/tri.12795.

4  
5 [11] Vallet-Pichard A, Mallet V, Nalpas B, Verkarre V, Nalpas A, Dhalluin-Venier V, et al.  
6  
7 FIB-4: an inexpensive and accurate marker of fibrosis in HCV infection. Comparison with  
8  
9 liver biopsy and fibrotest. *Hepatology* 2007;46:32-36.

10  
11 [12] Wai CT, Greenson JK, Fontana RJ, Kalbfleisch JD, Marrero JA, Conjeevaram HS,  
12  
13 et al. A simple non-invasive index can predict both significant fibrosis and cirrhosis in  
14  
15 patients with chronic hepatitis C. *Hepatology* 2003;38:518-526.

16  
17 [13] Salizzoni M, Franchello A, Smedile A, David E, Barbui A, Torrani M, et al. Marginal  
18  
19 grafts: finding the correct treatment for fatty livers. *Transpl Int* 2003;16:486-493.

20  
21 [14] Russo FP, Zanetto A, Burra P. Timing for treatment of HCV recurrence after liver  
22  
23 transplantation: the earlier the better. *Transpl Int* 2015;2016;29:694-697.  
24  
25  
26  
27 doi:10.1111/tri.12739.

28  
29 [15] Charlton M, Everson GT, Flamm SL, Kumar P, Landis C, Brown RS, et al. Ledipasvir  
30  
31 and sofosbuvir plus ribavirin for treatment of HCV infection in patients with advanced liver  
32  
33 disease. *Gastroenterology* 2015;149:649-659.

34  
35 [16] Charlton M, Gane E, Manns MP, Brown RS Jr, Curry MP, Kwo PY, et al. Sofosbuvir  
36  
37 and ribavirin for treatment of compensated recurrent hepatitis C virus infection after liver  
38  
39 transplantation. *Gastroenterology* 2015;148:108-117.

40  
41 [17] Pellicelli AM, Montalbano M, Lionetti R, Durand C, Ferenci P, D'Offizi G, et al.  
42  
43 Sofosbuvir plus daclatasvir for post-transplant recurrent hepatitis C: potent antiviral activity  
44  
45 but no clinical benefit if treatment is given late. *Dig Liver Dis* 2014;46:923-927.

46  
47 [18] Kobayashi T, Hige S, Terashita K, Nakai M, Horimoto H, Sho T, et al. Anemia and  
48  
49 thrombocytosis induced by ribavirin monotherapy in patients with chronic hepatitis C. *J*  
50  
51  
52  
53  
54  
55  
56  
57  
58  
59  
60  
60 *Gastroenterol* 2012;47:1228-1237.

[19] Poynard T, McHutchison J, Manns M, Trepo C, Lindsay K, Goodman Z, et al. Impact  
of pegylated interferon alfa-2b and ribavirin on liver fibrosis in patients with chronic

1  
2  
3 hepatitis C. *Gastroenterology* 2002;122:1303-1313.

4  
5 [20] EASL-ALEH clinical practice guidelines: non-invasive tests for evaluation of liver  
6  
7 disease severity and prognosis. European Association for the Study of the Liver. *J Hepatol*  
8  
9 2015;63:237-264.

10  
11 [21] D'Ambrosio R, Aghemo A, Fraquelli M, Rumi MG, Donato MF, Paradis V, et al. The  
12  
13 diagnostic accuracy of Fibroscan<sup>®</sup> for cirrhosis is influenced by liver morphometry in HCV  
14  
15 patients with a sustained virological response. *J Hepatol* 2013;59:251-256.

16  
17 [22] Foster GR, Irving WL, Cheung MC, Walker AJ, Hudson BE, Verma S, et al. HCV  
18  
19 Research UK. Cohort study of the impacts of direct acting antiviral therapy in patients with  
20  
21 chronic hepatitis C and decompensated cirrhosis. *J Hepatol* 2016;64:1224-1231.  
22  
23  
24  
25  
26  
27  
28  
29  
30  
31  
32  
33  
34  
35  
36  
37  
38  
39  
40  
41  
42  
43  
44  
45  
46  
47  
48  
49  
50  
51  
52  
53  
54  
55  
56  
57  
58  
59  
60

**Table 1. Demographic and baseline characteristics of recipients and donors**

<b>Recipient features (N=126)</b>	
<b>Age (years)</b>	60 [54-66]
<b>Male</b>	99 (78.6%)
<b>Body Mass Index (Kg/m<sup>2</sup>)</b>	24.6 [22.5–26.9]
<b>25-OH vitamin D<sup>x</sup> (&lt;20 ng/mL)</b>	71 (59.2%)
<b>HLA-DRB1*11 positive phenotype</b>	34 (27.0%)
<b><i>IL28B</i> genotype</b>	
rs 12979860 C/C	32 (25.4%)
rs 8099917 T/T	59 (46.8%)
<b>Previous antiviral treatment</b>	83 (65.9%)
<b>Antiviral treatment after LT</b>	57 (45.2%)
<b>Immunosuppressive drug</b>	
CsA – Tac – MMF – other	50 (39.7%) – 56 (44.4%) – 56 (44.4%) – 5 (4.0%)
<b>Time since LT (years)</b>	4.3 [2.3–7.2]
<b>HCV genotype</b>	
1a - 1b - 1 (unspecified)	17 (13.5%) – 70 (55.6%) – 6 (4.8%)
2 - 3 – 4	6 (4.8%) – 21 (16.7%) – 6 (4.8%)
<b>Baseline HCV RNA (log<sub>10</sub> IU/mL)</b>	6.40 [6.10–6.66]
≥ 10 <sup>6</sup> IU/mL	101 (80.2%)
<b>Corresponding Metavir fibrosis stage</b>	
F3 – F4	30 (23.8%) – 96 (76.2%)
<b>Haemoglobin (g/dL)</b>	12.8 [11.4–14.4]
<b>Platelets count (10<sup>9</sup>/L)</b>	99 [67-140]
<b>Liver enzymes (IU/L)</b>	
Aspartate aminotransferase	60 [40-101]
Alanine aminotransferase	69 [45-116]
γ-Glutamyltransferase	75 [41-152]

<b>Total bilirubin</b> (mg/dL)	1.1 [0.7–1.8]
<b>INR</b>	1.07 [0.98–1.22]
<b>Albumin</b> (g/dL)	3.9 [3.6–4.3]
<b>eGFR*</b> (mL/min)	70 [54-87]
<b>MELD score<sup>§</sup></b>	10 [8-13]
<b>Child class<sup>§</sup> A – B – C</b>	65 (67.7%) – 27 (28.1%) – 4 (4.2%)
<b>Ascites<sup>§</sup></b>	38 (39.6%)
<b>Encephalopathy<sup>§</sup></b>	12 (12.5%)
<b>Presence of varices<sup>§</sup></b>	26 (27.1%)
<b>Donor features (N=126)</b>	
<b>Age</b> (years)	62 [50–71]
<b>Male</b>	69 (54.8%)
<b>Split liver graft</b>	2 (1.6%)
<b>Graft quality<sup>^</sup> suboptimal<sup>#</sup></b>	57 (47.5%)
<b>Cold ischemia time</b> (minutes)	486 [424–545]
<b>Donor/Recipient match</b>	
<b>D-MELD</b>	982 [666–1303]

Numerical variables are expressed as median [Q1-Q3]. Categorical variables are expressed as numbers (prevalence, %).

<sup>^</sup>6 missing data

<sup>\*</sup>Chronic Kidney Disease Epidemiology Collaboration equation

<sup>§</sup>In 96 cirrhotic patients

<sup>#</sup>According to Salizzoni et al, Transpl Int 2003

Abbreviations: CsA, cyclosporine; D-MELD, donor age x recipient MELD; eGFR, estimated glomerular filtration rate; F, fibrosis; HCV, hepatitis C virus; HLA, human leukocyte antigen; IL28B, Interleukin 28B; LT, liver transplantation; MELD, Model for End-stage Liver Disease; MMF, mycophenolate mofetil; Tac, tacrolimus.

**Table 2. Liver function tests and non-invasive markers of fibrosis at baseline and at the end of therapy in responder versus relapser cirrhotic patients**

<b>BASELINE</b>	<b>Responders (n=72)</b>	<b>Relapsers (n=20)</b>	<b>p<sup>#</sup></b>
<b>APRI</b>	1.92 [1.00-3.27]	3.27 [1.72-5.51]	0.007
<b>FIB-4</b>	5.95 [3.60-11.10]	8.45 [7.17-16.08]	0.009
<b>Liver stiffness* (kPa)</b>	20.4 [16.0-33.8]	28.0 [21.6-44.4]	0.01
<b>Child score</b>	5 [5-6]	7 [6-8]	0.002
<b>MELD score</b>	10 [8-12]	13 [9-16]	0.02
<b>EOT</b>	<b>Responders (n=72)</b>	<b>Relapsers (n=20)</b>	<b>p<sup>#</sup></b>
<b>APRI</b>	0.46 [0.29-0.76]	0.83 [0.57-1.22]	0.02
<b>FIB-4</b>	3.25 [1.90-4.30]	4.80 [3.71-7.42]	0.01
<b>Liver stiffness* (kPa)</b>	17.5 [11.1-25.7]	23.4 [18.3-39.0]	0.09
<b>Child score</b>	5 [5-6]	6 [5-7]	0.19
<b>MELD score</b>	11 [9-14]	13 [11-17]	0.05

Numerical variables are expressed as median [Q1-Q3]

\*Liver stiffness was available at baseline in 51 responders and 17 relapsers; at EOT in 51 responders and 13 relapsers

<sup>#</sup>p-values calculated according to Wilcoxon test for paired data

Abbreviations: APRI, AST to platelet ratio index; EOT, end of therapy; kPa, kilopascal; MELD, Model for End-stage Liver Disease.



**Table 32. Clinical and biochemical variations in cirrhotic long-term responder cirrhotic patients who achieved viral eradication**

	Baseline (N=72)	EOT (N=72)	SVR12 (N=72)	SVR24 (N=72)	SVR48 (N=71°)	p <sup>^</sup>	p <sup>§</sup>
<b>AST (IU/L)</b>	69 [47-97]	23 [20-28]	27 [22-35]	24 [18-32]	21 [18-28]	<0.001	0.13
<b>ALT (IU/L)</b>	59 [41-90]	15 [11-23]	18 [14-27]	16 [12-25]	17 [12-27]	<0.001	0.02
<b>Bilirubin (mg/dL)</b>	1.1 [0.8-1.5]	1.4 [1.1-2.2]	0.9 [0.6-1.2]	0.8 [0.6-1.2]	0.9 [0.6-1.1]	<0.001	0.74
<b>INR</b>	1.06 [0.99-1.20]	1.11 [1.07-1.24]	1.09 [1.02-1.24]	1.08 [1.02-1.22]	1.11 [1.07-1.23]	0.03	0.007
<b>Albumin (g/dL)</b>	3.9 [3.6-4.3]	4.1 [3.8-4.4]	4.1 [3.7-4.3]	4.2 [3.8-4.4]	4.3 [4.0-4.5]	0.02	0.31
<b>Creatinine (mg/dL)</b>	1.1 [0.9-1.3]	1.1 [0.9-1.3]	1.0 [0.9-1.3]	1.1 [1.0-1.3]	1.1 [0.9-1.3]	0.36	0.12
<b>eGFR* (mL/min)</b>	68 [52-84]	64 [52-80]	67 [53-83]	63 [52-78]	62 [52-82]	0.26	0.25
<b>Platelets (10<sup>9</sup>/L)</b>	99 [65-134]	131 [86-185]	99 [64-133]	108 [72-142]	112 [68-144]	0.002	0.01
<b>Ascites</b>	22 (30.6%)	12 (16.7%)	8 (11.1%)	7 (9.7%)	7 (9.9%)	0.003	>0.99
<b>Encephalopathy</b>	5 (6.9%)	4 (5.6%)	3 (4.2%)	3 (4.2%)	2 (2.8%)	0.72	>0.99
<b>MELD score</b>	10 [8-12]	11 [9-14]	9 [8-11]	9 [8-11]	10 [8-11]	0.34	0.92
<b>Child score</b>	5 [5-6]	5 [5-6]	5 [5-6]	5 [5-5]	5 [5-5]	<0.001	0.68

Numerical variables are expressed as median [Q1-Q3]. Categorical variables are expressed as numbers (prevalence,%).

p-values calculated according to Wilcoxon test for paired data for numerical variables and according to Fisher's exact test for categorical variables.

°71 out of 72 cured patients reached 48 weeks of follow-up after therapy

\*Chronic Kidney Disease Epidemiology Collaboration equation

^Baseline versus SVR24

§SVR24 versus SVR48

Abbreviations: ALT, alanine aminotransferase; AST, aspartate aminotransferase; eGFR, estimated glomerular filtration rate; EOT, end of therapy; MELD, Model for End-stage Liver Disease; SVR12, sustained virological response at week 12 after end of therapy; SVR24, sustained virological response at week 24 after end of therapy; SVR48, sustained virological response at week 48 after end of therapy.

## FIGURE LEGENDS

**Figure 1. Sustained virological response rates by intention to treat analysis according to fibrosis stage.** SVR, sustained virological response; F, fibrosis according to Metavir; SVR12, sustained virological response at week 12 after therapy; SVR24, sustained virological response at week 24 after therapy.

**Figure 2. Sustained virological response rates at week 24 after therapy in the 96 cirrhotic patients.** SVR24, sustained virological response at week 24 after therapy; CI, confidence interval; *IL28B*, *Interleukin 28B*; HLA, human leukocyte antigen; TW4, week 4 on therapy; MELD, Model for End-stage Liver Disease; APRI, AST to platelet ratio index; kPa, kilopascal.

**Figure 13. Variations of from baseline to weeks 24 and 48 after therapy in APRI (Panels A and B) and FIB-4 (Panels C and D) from baseline to weeks 24 and 48 after therapy, in F3 and F4 long-term responders.** patients who achieved viral eradication. APRI, AST to platelet ratio index; F, fibrosis according to Metavir; SVR24, sustained virological response at week 24 after therapy; SVR48, sustained virological response at week 48 after therapy.

**Figure 24. Variations in of liver stiffness from baseline to weeks 24 and 48 after therapy in F3 (Panel A) and F4 patients (Panel B) who achieved viral eradication long-term responders.** F, fibrosis according to Metavir; kPa, kilopascal; SVR24, sustained virological response at week 24 after therapy; SVR48, sustained virological response at week 48 after therapy.

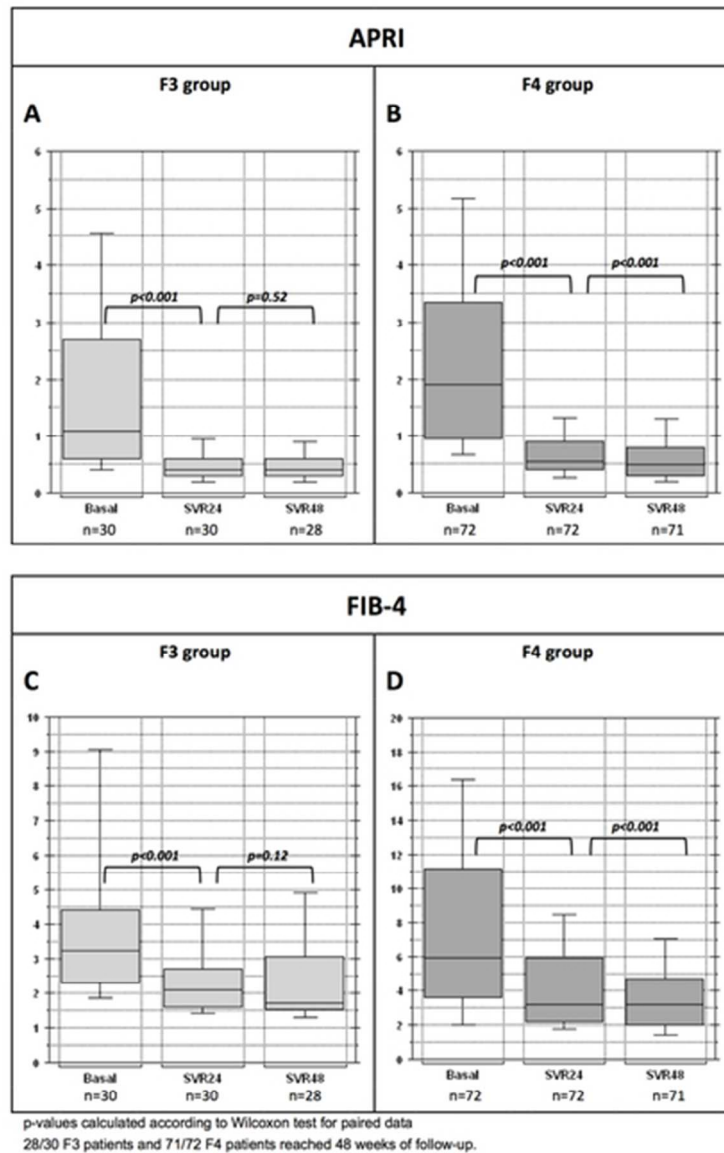


Figure 1. Variations of APRI (Panels A and B) and FIB-4 (Panels C and D) from baseline to weeks 24 and 48 after therapy, in F3 and F4 long-term responders. APRI, AST to platelet ratio index; F, fibrosis according to Metavir; SVR24, sustained virological response at week 24 after therapy; SVR48, sustained virological response at week 48 after therapy.

194x236mm (72 x 72 DPI)

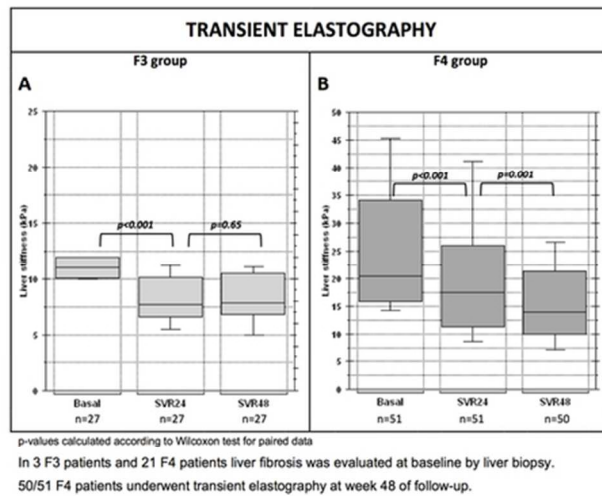


Figure 2. Variations of liver stiffness from baseline to weeks 24 and 48 after therapy in F3 (Panel A) and F4 (Panel B) long-term responders. F, fibrosis according to Metavir; kPa, kilopascal; SVR24, sustained virological response at week 24 after therapy; SVR48, sustained virological response at week 48 after therapy.

260x142mm (72 x 72 DPI)