

AperTO - Archivio Istituzionale Open Access dell'Università di Torino

Structural attributes, tree-ring growth and climate sensitivity of *Pinus nigra* Arn. at high altitude: Common patterns of a possible treeline shift in the central Apennines (Italy)

This is the author's manuscript

Original Citation:

Availability:

This version is available <http://hdl.handle.net/2318/1622636> since 2017-01-20T10:26:36Z

Published version:

DOI:10.1016/j.dendro.2014.05.002

Terms of use:

Open Access

Anyone can freely access the full text of works made available as "Open Access". Works made available under a Creative Commons license can be used according to the terms and conditions of said license. Use of all other works requires consent of the right holder (author or publisher) if not exempted from copyright protection by the applicable law.

(Article begins on next page)

This is the author's final version of the contribution published as:

[Piermattei A., Garbarino M., Urbinati C. 2014. Structural attributes, tree-ring growth and climate sensitivity of *Pinus nigra* Arn. at high altitude: common patterns of a possible treelineshift in the central Apennines (Italy). *Dendrochronologia* 32: 210-219. doi: 10.1016/j.dendro.2014.05.002.]

The publisher's version is available at:

[<http://www.sciencedirect.com/science/article/pii/S1125786514000502>]

When citing, please refer to the published version.

Link to this full text:

[<http://hdl.handle.net/2318/1622636>]

This full text was downloaded from iris-AperTO: <https://iris.unito.it/>

1 **Title:** Structural attributes, tree-ring growth and climate sensitivity of *Pinus nigra* Arn. at high
2 altitude: common patterns of a possible treeline shift in the central Apennines (Italy).

3

4 **Authors:** Piermattei Alma*, Garbarino Matteo, Urbinati Carlo

5

6 Università Politecnica delle Marche. Department of Agricultural, Food and Environmental
7 Sciences. Via Brecce Bianche, 60131 Ancona, Italy.

8

9 *** Corresponding author:**

10 Piermattei Alma

11 email: alma.piermattei@univpm.it

12 Tel. +39 071 220 4274

13

14

15

16

17

18

19

20

21

22

23

24

25

26

27 **Abstract**

28 European black pine (*Pinus nigra* ssp. *nigra* Arnold) encroachment at increasing elevation has been
29 analysed at four treeline ecotones of the central Apennines (Italy). The study sites are located along
30 a North-South gradient of 170 km across Marche and Abruzzo regions in the Central Italy. The
31 aims of this study were: i) to detect possible common patterns of structural attributes of black pine
32 regeneration at the treeline ecotone; ii) to date the seedlings germination and iii) to assess the
33 climate influence on the pine upward encroachment process also using intra-annual density
34 fluctuations (IADFs) in tree-rings. We sampled 658 encroached black pine trees above the current
35 treeline to the mountain top. All individuals were mapped and their basal stem diameter, total
36 height, annual height increments and other structural attributes measured. One increment core was
37 extracted from stem base of most samples for cambial age determination and detection of intra-
38 annual density fluctuations (IADF). At two sites we also extracted cores at DBH from forest trees to
39 assess climate-growth relationships of black pine. We used multivariate analysis (PCA) to explore
40 the correlation structure of the main tree attributes, regression analysis to relate radial and height
41 increment and dendroclimatic analysis to assess the influence of climate on tree growth and IADF
42 formation.

43 Most black pine trees were located at high altitude and their structural attributes were similar at the
44 four sites where the pine encroachment process started between 30 and 40 years ago featuring
45 similar germination peaks and growth patterns. Black pine is particularly sensitive to maximum
46 temperatures and IADF occurred in mid-late summer with highest frequency peaks between 2003
47 and 2004. The pine encroachment process, besides the differences of environmental features and
48 land use histories of the four study sites, appears synchronic and spatially diffused. Consistent tree-
49 growth dynamics and the species adaptation to a warming climate are signals envisaging a possible
50 treeline upward shift.

51

52

53 **Keywords**

54 European black pine, Apennines, spatial patterns, tree rings, IADF, climate change.

55

56 **Introduction**

57 Temperature values have increased globally over the last century and it is considered the main
58 driver controlling treeline formation and dynamics around the world (Körner, 2007). Nonetheless
59 treeline advancement is not a worldwide homogeneous phenomenon and at some sites temperature
60 it is not the dominant limiting factor (Holtmeier and Broll, 2007). Treeline physiognomy seems also
61 to control treeline position and dynamics (Harsch et al. 2009). Harsch and Bader (2011) refer to
62 four treeline primary forms: 1) diffuse, 2) abrupt, 3) island and 4) krummholz and they found that
63 treeline advancement occurred mainly with diffused physiognomy. This form responds better to
64 climate warming, whereas other forms are controlled mainly by dieback and seedling mortality. The
65 influence of temperature can also be masked by interactions with other factors such as precipitation
66 (Daniels and Veblen, 2003; Wang et al., 2006) or cold-induced photo inhibition (Danby and Hik,
67 2007a). Treeline advancement can also be affected by slope aspect (Karlsson et al., 2007),
68 interspecific interaction (Harsch et al., 2009), physical or geomorphic local conditions (Zhang et al.,
69 2009) and also various anthropogenic disturbances. Treeline locations in relatively undisturbed sites
70 are directly influenced by growing season temperatures and indirectly by altitude, latitude,
71 topography and seed dispersal (Kot et al., 1996). Undisturbed treelines are rare in European
72 mountains, shaped for centuries by human land-use (Dirnböck et al., 2003). In most cases it is very
73 difficult to disentangle the climate from the land-use signal in the assessment of vegetation changes
74 (Gehrig-Fasel et al., 2007). This appears to be the case of the Italian Alps (Motta and Nola, 2001)
75 and even more of the Apennines where severe human pressure and climate change have co-occurred
76 over a very long time span. Treeline ecotones in the Apennines are seldom used as baselines for
77 measuring climate change because of their long history of anthropogenic disturbance. During the
78 Holocene, Apennines treelines were lowered for transforming high altitude forests into grazing

79 areas for herbivores, first wild and later domestic. However livestock pressure has largely decreased
80 over the last 50-60 years and a temperature increase over the last 30-35 years has been recorded in
81 many sites of the region (Brunetti et al., 2006).

82 Moreover, the typical “abrupt” physiognomy (Harsch et al., 2011) of the local treelines and the life
83 history traits of the dominant tree species, such as *Fagus sylvatica*, have most likely slowed down
84 the expansion process (Stanisci et al., 2005; Pezzi et al., 2008; Gallucci et al., 2010). Other treeline
85 species in the Apennines are *Pinus leucodermis* and *Pinus nigra* subsp. *laricio* diffused in the
86 southern ranges, and *Pinus nigra* subsp. *nigra* that is expanding in the central limestone sites
87 (Piermattei et al., 2012).

88 Along the Apennines range treeline forms are mainly abrupt and diffuse. European beech (*Fagus*
89 *sylvatica*) forests tend to form abrupt treeline between 1600-2000 m a.s.l. with very little or no
90 advancement (Stanisci et al., 2005; Pezzi et al., 2008; Gallucci et al., 2010).

91 Diffuse treelines are less common but more dynamic for the presence of pine forests between 1600
92 to 2200 m a.s.l.: *Pinus leucodermis* and *Pinus nigra* subsp. *laricio* at the southern sites, *Pinus nigra*
93 subsp. *nigra* at some central sites.

94 At some central Apennines sites we observed spontaneous pine encroachment above the current
95 treelines mainly formed by European black pine (*Pinus nigra* subsp. *nigra*) plantations for slope
96 erosion control (Piermattei et al., 2012). Black pine regenerates abundantly within its optimal
97 altitude range (500-1600 m a.s.l.), but its scattered presence at higher altitudes (1700-2100 m a.s.l.)
98 seems a recent phenomenon in the Apennines (Richardson, 2000; Piermattei et al., 2012). In the
99 Balkan mountains *P. nigra* is well adapted to extreme xeric sites, steep, rocky slopes and highly
100 erodible soils where growth conditions for other tree species are unsuitable (Poljanšek et al., 2012).

101 Tree sexual maturity is reached at 15-40 years and the large seed crops are produced at 2-5 year
102 intervals (Isajev et al., 2004). Pollen dispersal and pollination occur from May to June and seed
103 maturation takes place in spring or early summer, about 13 months after pollination. The seeds are

104 completely mature between September and November and they are wind-dispersed when the cones
105 open from December to April of the following growing season (Van Haverbeke, 1990).
106 The objectives of this study are: (1) to detect possible common spatial patterns of structure and
107 growth attributes of black pine regeneration at the treeline ecotones at four limestone sites of the
108 central Apennines; (2) to date the tree establishment and to check the existence of spatio-temporal
109 patterns along the whole encroachment area; (3) to assess possible relationships of tree-ring growth
110 and intra-annual density fluctuations (IADF) with some climate variables. This study is based on
111 previous works showing that: i) the pine upward shift followed a recent synchronic wave of
112 germination peaks occurred between 1996 and 2000; ii) decreasing livestock grazing as well as
113 climate warming over the last few decades are major drivers of the black pine expansion at high-
114 elevation in the central Apennines (Piermattei et al., 2012).

115

116 **Materials and methods**

117 *Study area*

118 We sampled four treeline ecotones in the central Apennines (Italy) along a 170 km North-South
119 gradient across Marche (Mt. Acuto, ACU and Mt. Vettore, VET) and Abruzzo (Mt. San Franco,
120 SFR and Mt. Sirente, SIR) regions (Fig. 1 and Tab. 1). Meteorological data for climate
121 classification were retrieved from the nearest weather stations for the period 1961–1990 (Tab. 2).
122 Drought are common in July and August and precipitation peaks occur in autumn and early spring.
123 Snowfalls are more common and abundant in late winter (February and March), but snow
124 permanence on the ground is limited and discontinuous.

125 According to the Rivas-Martinez bioclimatic classification, all sites have a temperate oceanic
126 macrobioclimate; ACU, VET and SIR show a low supra-temperate while SFR an upper
127 supratemperate bioclimate. ACU features a low hyperhumid and VET, SFR and SIR an upper
128 humid ombrotype (Rivas-Martinez and Rivas-Saenz, 2009).

129 All sites are on calcareous bedrocks but they differ in some physiographic or landscape attributes
130 (e.g. peak and treeline elevation, slope aspect and angle, geomorphology) (Fig.2).

131 ACU is the Apennine site where we first observed the upward dynamics of the black pine
132 encroachment. It has the lowest elevation but is on a northern slope with an abrupt coppiced beech
133 treeline forest ranging between 1350 and 1450 m a.s.l. The seed bank, is a residual pine plantation
134 located at 300 m a.s.l. down slope.

135 At VET the peak elevation is the highest; the treeline is abrupt, on a S-SE slope at 1500-1600 m
136 a.s.l., formed by extensive black pine plantations and a few scattered patches of the previous beech
137 forest at the least accessible sites. *Carex humilis* and *Sesleria* spp. dominate the higher elevation
138 limestone grasslands.

139 At SFR the treeline is also abrupt and formed by an extensive black pine plantation, but on a SW
140 slope. At SIR pine encroachment occurs on a W-SW gentle sloping and heavily pastured karst
141 plateau ranging between 1700 to 2200 m a.s.l. No evident treeline is present nearby and beech
142 forests are at much lower elevation below the grazed area. Even though seeders or residual pine
143 plantations are very scattered and far away from the sampled sites, black pine natural regeneration
144 is dispersed along the entire slope gradient.

145 At the four sites grazing histories appear different but very difficult to reconstruct due to lack of
146 continuous and reliable data. In the central Apennines grazing season varied locally according to
147 climate and site conditions, but is mainly from May to mid-October and rarely intensive, due to
148 low productivity of these grasslands. Livestock is mainly cows, sheep and more recently horses, but
149 loads decreased up to 50% in the last 40 years due to the increasing abandonment of rural and
150 mountain areas (Pinto-Correia, 1993, Dullinger et al., 2003, Freléchoux et al., 2007).

151 Cows, sheep and horses are all selective feeders and their preferences are influenced by several
152 foliage attributes (digestibility, shoot biomass, fibre content, nutrient concentrations, level of toxic
153 secondary compounds and spiniess) and are highly dependent on what else is available. Pine
154 needles contain terpenes, which make the foliage distasteful and not particularly attractive during

155 the summer when better options are available. Pines can be browsed in winter time when deciduous
156 trees or seedlings are leafless and other vegetation is either unpalatable or covered by snow
157 (Andrews et al., 2000). However no winter grazing is reported for these areas. Goats can cause
158 browsing damage and even death to pine seedlings (Zamora et al., 2001, Torrano and Valderrabano,
159 2005) but there is no record of goat rearing in the studied areas, at least during the twentieth
160 century. Horses can cause seedlings uprooting or other mechanical damage, but there is no evidence
161 of interference with their germination.

162

163 *Tree structural attributes*

164 The field data were collected between 2005 and 2012. At ACU, VET and SFR we sampled all the
165 black pine individuals present from the treeline upward. At SIR due to the larger number of trees
166 present across the slope we sampled within a virtual altitudinal transect from 1700 m a.s.l. upward.
167 All sampled areas had a surface comprised between 50 and 120 ha. We mapped all the pines with a
168 Trimble GeoXH GPS device for a total of 658 individuals (72 at ACU, 181 at VET, 254 at SFR and
169 151 at SIR). For each tree we recorded the following attributes: basal stem diameter, tree height,
170 crown depth, length of stem internodes, needle age (expressed as the number of years of their
171 permanence on the tree branches), tree vigour (according to five classes based on stem and crown
172 damage: 1, no damage; 2, minor damage; 3, medium damage; 4, major damage; 5, dead). To
173 explore the correlation structure of the eight variables (tree structural attributes) and to highlight
174 underlying differences between the four sites, we applied a principal component analysis (PCA)
175 using the PC-ORD 6 statistical package. The statistical significance of the ordination analysis was
176 tested by the Monte Carlo permutation method based on 10000 runs with randomized data.

177

178 *Tree ring analysis*

179 For the pine trees growing above the treeline a basal increment core was extracted from individuals
180 with basal stem diameter > 4 cm. At VET and SFR, the two sites with a treeline pine forest (Fig. 2),

181 we also extracted two opposite cores at breast height from dominant pine trees selected along the
182 forest edges.

183 We collected 429 cores from encroaching trees and seedlings (68 ACU, 150 VET, 112 SFR and 99
184 SIR) and 70 cores from treeline forest trees (20 at VET and 50 at SFR). All cores were mounted on
185 wooden supports and thoroughly polished with progressively finer sandpaper. Tree-ring width
186 measurement, at 0.01 mm accuracy, was provided by the semi-automatic LINTAB system and
187 WinTSAP (Rinntech).

188 At the four sites the short time series of encroaching pines were visually crossdated. Given their
189 high variability for most individuals we averaged their annual radial increments and compared to
190 their annual height increment by means of regression analysis, in order to assess the influence of
191 other factors.

192 The ring widths series from the trees at the treeline were visually and statistically checked for
193 measurement errors and crossdated. Each tree-ring series was standardized using the software
194 ARSTAN (Cook, 1985). Since all series are around 20 to 50 years we applied a spline function with
195 a 50% frequency response of 10 years to emphasize higher inter-annual frequency variance (Cook
196 and Peters, 1981). The indexed series were then averaged in the two mean site chronologies and
197 used for the following dendroclimatic analysis.

198 Climate-growth correlations were calculated using monthly maximum, minimum and mean
199 temperatures and total precipitation data obtained from a 0.5×0.5 degree spatial grid
200 (<http://climexp.knmi.nl/>) subjected to homogeneity tests and adjustments (Van Oldenborgh, 1999,
201 Van Oldenborgh & Burgers, 2005). The selected climate series, correspond to the closest grid point
202 to the two locations (VET and SRF).

203 We used DENDROCLIM 2002 (Biondi and Waikul, 2004) with 1000 replications to compute the
204 bootstrapped correlations for the period 1954-2009 at VET and 1966-2009 at SFR. Independent
205 monthly climate variables (T max, T min, T mean and P) were sequenced in a biological year from
206 April of the year prior to growth (t-1) to October of the year of growth (t).

207 On the tree-ring series of encroaching pines, we recorded presence and frequency of intra-annual
208 density fluctuations (IADF). These are considered tree-ring anomalies or false rings (Wimmer,
209 2002) and appear after a significant alteration of cambial activity due to withdrawal of normal radial
210 growth, featuring either production of latewood-type cells in the earlywood or earlywood-type cells
211 in the latewood (Fritts, 1976). IADF are mainly climate driven and can be useful indicators of tree
212 adaptation to changing environmental conditions (Vieira et al., 2009, De Luis et al., 2007, 2011).
213 The annual frequency of IADF in the tree ring series (F), was first calculated with the ratio (Osborn
214 et al., 1997):

$$215 \quad F = N/n$$

216 where N is the number of trees where IADF were present in a given year, and n is the number of
217 observed trees. Since changing the samples depth can generate a bias in the variance of the
218 frequency series an adjusted IADF frequency has been computed as follows:

$$219 \quad f = Fn^{0.5}$$

220 where f is the stabilized IADF frequency (Osborn et al., 1997).

221 We assessed the influence of climate on the tree ring series IADF frequency with a nonparametric
222 Spearman correlation analysis. We used mean annual temperature and total precipitation values
223 from the gridded climate data, which have been used to calculate some climatic and bioclimatic
224 indices as the Aridity Index (AI – De Martonne, 1926), the Rain Factor (RF – Lang et al., 1976) the
225 annual Ombrothermic Index (OI), the Ombrothermic Index of the two warmest months (OI2), and
226 the Ombrothermic Index of the warmest quarter (OI3), (Rivas-Martinez et al., 1999).

227

228 **Results**

229 *Tree structural attributes*

230 Tree size of encroached individuals is highly variable at the four study sites: the diameter at stem
231 base ranged from 0.5 to 55 cm (mean 9 cm, std.dev 7.5); the tree height ranged from 0.12 to 8.4 m
232 (mean value 1.4 m and std.dev 1.3). The smallest trees in diameter and height were recorded at

233 SFR, the largest ones at SIR (Tab. 3). Mean age was very similar at all sites and varied between 12
234 to 19 years. Most pine trees were located between 1700 and 1800 m a.s.l. and the highest elevation
235 (2155 m a.s.l.) was reached at SIR. At ACU treeline and mountain peak altitudes are lower and
236 therefore most trees grow between 1500 and 1600 m a.s.l. However no correlation was found
237 between age and altitude at the 4 sites (Fig. 3).

238 The planted pines growing at the treeline margin have different size and age. The mean diameter
239 and mean height at VET and SFR are respectively 38.5 cm ($SD \pm 7.7$) and 10.8 m ($SD \pm 6.1$) and
240 28.5 cm ($SD \pm 1.3$) and 10.2 m ($SD \pm 2.5$).

241 The multivariate ordination analysis (PCA) on tree structural attributes revealed a high within-site
242 variability (Fig. 4). However the short distance in the ordinal environment between the centroids of
243 the four sites suggested minor differences among sites, confirmed also by the high overlay of their
244 convex hulls. SIR and VET are very similar due to the higher share of larger and older saplings,
245 whereas SFR displayed a different pattern for the larger percent of younger trees. The needle age
246 (Nee) appeared positively related to tree vigour, but both these variables were not correlated to tree
247 size. Globally the first two principal components were significant ($p < 0.001$, Monte Carlo test) and
248 accounted for a cumulative 67.08% of the total variation (Table 4). PC1 described variations of tree
249 size (diameter and height) and age, whereas PC2 expressed a gradient of tree health or vigour.

250

251 *Growth patterns*

252 The cambial age frequency distribution revealed that pine recruitment started slightly earlier
253 (around 1974) at SFR, SIR and VET than at ACU (in 1981). In all sites, the cambial age frequency
254 approximated a normal distribution (Shapiro-Wilk $W > 0.5$), typical of even-aged processes, with
255 maximum peaks between 1992 and 2002. A later period (1998-2003) of maximum recruitment was
256 recorded at SFR (Fig. 5). The positive and significant correlation obtained by regression analysis of
257 radial and height mean increments suggested the presence of a common growing pattern at all sites

258 (Fig. 6). ACU and VET regression lines have steeper slopes. ACU shows also the most fitted linear
259 pattern ($r = 0.74$).

260 We used respectively 38 and 20 series to build site chronologies of planted pines growing at the
261 treeline margin at SFR and VET. The two time series have similar trends and are well
262 synchronized. Mean cambial age at DBH is 41 yrs ($SD \pm 9.73$) at VET and 36 yrs ($SD \pm 9.98$) at
263 SFR. This large within-site variability may be largely attributed to different planting phases.

264

265 *Climate influence on tree growth*

266 *Pinus nigra* responses to climate at the two treeline forests are variable and somehow controversial
267 (Fig. 7). The only common response at both sites is the negative and significant correlation with
268 May precipitation. At SFR alone June precipitation has a positive influence on tree-ring growth. At
269 VET maximum temperatures have a positive effect in May (t) and a negative one in July (t-1). At
270 SFR pine is globally more sensitive to temperatures, in fact maximum, mean and minimum ones all
271 influenced tree-ring growth. Positive correlation was found for both maximum temperature in
272 March of the current year (t) and April of the previous year (t-1).

273 All IADF detected in encroached trees are earlywood-type cells in the latewood band near the ring
274 closing border (Fig. 8), revealing that cambial activity first decreased or stopped during early
275 summer and then recovered during late summer and early autumn. IADF frequency distributions are
276 not globally homogenous: at ACU and VET values are higher and the curves have approximately
277 normal shapes; at SFR values are much lower and distributed along the entire time span; at SIR the
278 distribution pattern is irregular showing an increasing trend in the last years. Nonetheless maximum
279 peaks are synchronic, occurring in 2003 at VET and SFR, and in 2004 at ACU and SIR (Fig. 9).

280 The correlation analysis between IADF annual frequency and climatic variables showed similar
281 pattern especially for ACU and SIR; at SFR all values obtained are not statistically significant.

282 Mean annual temperature is significantly and positively associated ($\rho > 0.4$, $p < 0.05$) at all the sites
283 except for SFR (Table 5). Annual precipitation is negatively and significantly correlated only at

284 ACU and SIR. The climatic and bioclimatic indices (OI, OI2, AI and RF) were negatively and
285 significantly correlated to IADF frequency at ACU, VET and SIR sites.

286

287 **Discussion**

288 In the central Apennines *Pinus nigra* encroachment of abandoned pastures is a widespread and
289 continuous process at mid-slope elevation (up to 1500 m a.s.l.), enhanced by the nearby abundant
290 seed sources provided by nearby pine plantations. Less common is the irregular advancement of
291 black pine trees above the current treeline, as observed at the four study sites. Here most trees are
292 growing between 1700 and 1800 m a.s.l. whereas some have unexpectedly trespassed the threshold
293 of 2000 m a.s.l. (2090 m at VET and 2155 m at SIR) (Fig.3).

294 Structural attributes at the four sites showed a high *within-site* and a low *between-site* variability.
295 The former can be related to the large extension of the sampled areas due to the scattered
296 distribution of the pine individuals, and to the numerous limiting growth factors at high altitude,
297 such as extreme climate conditions, irregular topography, shallow soil, rock fall, debris flow and
298 land use changes (Holtmeier and Broll, 2005). In these conditions the presence of safer sites
299 enhanced growth performance and also cone production (Piermattei et al., 2012). At SIR, given the
300 more favourable topographic conditions of a moderate sloping karst plateau, trees have a larger
301 mean size. Furthermore geomorphic related disturbances are less frequent here compared to the
302 other sites, all with steeper slopes. This was confirmed by the significant lower percentage of
303 severely damaged (by rock or debris fall) trees recorded at SIR.

304 Nonetheless the between-site variability is very low, suggesting that the structural and tree-growth
305 variables are globally very similar (Fig. 4). In this study the tree vitality was not correlated to size
306 and age of trees, therefore we may assume that their vigour loss or mortality are mainly controlled
307 by external factors.

308 Site features and grazing histories are different at the four treeline ecotones, therefore the strong
309 overall similarity exhibited by the PCA supports the influence of a major common driver to the

310 encroachment process. Since the same hypothesis was posted in a preliminary study concerning
311 only two sites (ACU and VET) (Piermattei et al., 2012) we believe that the similar outcomes
312 obtained in a wider study area provide further evidence of an overall climate control on the pine
313 upward shift.

314 This hypothesis is also supported by the synchronic pattern of the pine pioneering encroachment
315 above the treeline initiated 30-40 years ago at all sites. Tree-ring dating confirmed that pine
316 germinations begun not later than 1974 at three sites except ACU, where started not later than 1981.
317 Cambial age frequency distribution curves have similar trends with modal peaks between 1992 and
318 2003 decreasing in the following years, especially at ACU. At VET and SFR the presence of
319 extensive pine plantations provided a larger seed supply and a more abundant dissemination. At
320 ACU and SFR seed was provided by fewer and distant parental trees at lower elevation,
321 strengthening the role of wind as a dispersal vector and a crucial driver to guarantee the pine
322 pioneering process. The seeds of black pine are very light and wind-scattered by secondary
323 dispersion, a step-wise process that favours seed transport at long distance and higher altitude
324 (Johnson and Fryer, 1992; Greene and Johnson, 1997).

325 At the treeline the most limiting factor to height growth is the low temperature (Körner, 2007),
326 reducing the meristematic activity regardless of the photoassimilate abundance (Rossi et al., 2007).
327 In our sites, despite their different altitudes and microsite conditions, the correlation between mean
328 radial and height increments is positive and significant suggesting that tree growth is consistent in
329 both directions, scarcely affected by other external factors and possibly controlled by climate.

330 Summer drought is very likely to affect radial growth, not only in Mediterranean species (Cherubini
331 et al., 2003). In xeric sites of Austria the growth of *Pinus nigra* is mainly controlled by spring-
332 summer moisture availability (Strumia et al., 1997; Leal et al., 2007). In drought sensitive areas of
333 the Mediterranean basin, European black pine tree-ring growth is mainly influenced both by
334 summer precipitation and temperature (Fernandez et al., 1996, Lebourgeois, 2000), but contrasting

335 effects with lack of correlation are also reported in south-western Spain (Martin-Benito et al.,
336 2008).

337 The sensitivity to temperature and precipitation of planted pines at VET and SFR is variable and
338 somehow controversial (Fig. 7). The negative correlation of May precipitation (often snow at that
339 altitudes) at both sites could be related to their direct effect in shortening the growing season and
340 possibly reducing the amount of incoming solar radiation and of the photoassimilate produced. The
341 positive effect of June precipitation at SFR can be explained with its more southern location and the
342 warmer aspect (SW) of the slope.

343 The positive responses to spring maximum temperatures (March at SFR and May at VET) can
344 suggest their crucial role at the beginning of the growing season, but with delayed effects according
345 to local climate differences, warmer and more xeric at SFR than VET.

346 In the central Apennines the length of the growing season can change yearly, starting from April to
347 June and ending between October and November. A warmer start can reactivate earlier the
348 cambium prolonging the period of earlywood production (Gricar et al., 2006; Rossi et al., 2008)
349 before summer drought conditions could occur. This effect appears more pronounced at SFR both
350 during the year of tree-ring formation [March (t)] and prior to it [April (t-1)]. The negative
351 correlation of July (t-1) Tmax at VET is likely related to the indirect and lagged effect of high
352 temperature on increasing evapotranspiration. The tree-ring formation is limited more by the
353 previous year July Tmax than by the current ones, which is reasonable in a xero-thermic treeline
354 location where wood formation can withdraw during the warmest and driest month.

355 The IADFs and other anatomical features can also be used to assess the climate influence on tree
356 growth patterns (Novak et al., 2013). Several studies showed a relationship between IADF
357 formation and climate (Wimmer et al., 2000; Rigling et al., 2001; Campelo et al., 2006; De Micco
358 et al., 2007; Novak et al., 2013).

359 In our samples the IADFs are mainly located within the latewood portion of the ring (Vieira et., al
360 2009, De Luis et al., 2011, Novak et al., 2013) indicating the occurrence of resumed favorable

361 conditions after a summer stress which reactivated cambial activity toward the end of growing
362 season (De Luis et al., 2011; Camarero et al., 2010; Novak et al., 2013).

363 The IADFs frequency in all sites, except SFR, are somehow correlated to climatic conditions,
364 positively with mean annual temperatures and negatively with annual precipitation. Increasing
365 temperature can cause a higher evapotranspiration, induce water stress and altering cambial activity
366 by anticipating the production of latewood cells. Increasing precipitation, especially in summer,
367 allows trees to avoid summer dormancy and to conclude normally the seasonal growth as confirmed
368 by the OI2 and OI3, that are indexes calibrated on precipitation of the two warmest months and of
369 the warmest quarter.

370 Maximum peaks of IADFs frequency at VET and SFR occurred in 2003, the warmest year of the
371 last century (Beniston, 2004) and in 2004 at ACU and SIR. We did not find any significant
372 correlation between IADFs frequency and elevation but with tree size and radial increment. Other
373 studies found that the presence of IADFs is higher in younger trees (Vieira et al., 2009; Novak et al.
374 2013) and in trees with wider rings (Villalba and Veblen, 1994; Rigling et al., 2001; Copenheaver et
375 al., 2006; De Luis et al., 2007). It has been also proved that younger trees have usually a longer
376 growing season (Rossi et al., 2008) and that they respond faster to changing environmental
377 conditions (Villalba and Veblen, 1994).

378

379 **Conclusions**

380 The encroachment of *Pinus nigra* above the current treeline is a recent non-linear natural process
381 observed in the central Apennines, that we measured at four representative sites. This secondary
382 succession, which induced pine seedling establishment at unexpected high elevations, appears
383 controlled by at least three different co-occurring factors: i) the presence of local seed sources of
384 European black pine, a highly pioneering species, ii) the decreased livestock grazing pressure and
385 possibly, iii) the climate warming trend. Pine seeds were provided by near and also distant parental
386 trees in extensive or residual plantations. Suitable colonizing space was made available with the

387 declining grazing pressure throughout the last 40-50 years, especially where herbaceous species
388 were not too competitive. Finally the climate warming, recorded in the area, seemed to have
389 favoured the upward expansion of pine seedlings (Piermattei et al., 2012).

390 The *Pinus nigra* encroachment appears in general as a successional wave featuring synchronic
391 major peaks between 1995 and 2000, and a general decrease in the following years. The overall
392 similarity of the tree structural and growth attributes at all sites is counterbalanced by a high within-
393 site variability. Tree-ring growth and IADF frequency seem to confirm the suitability of the species
394 to a changing environment. The results also suggest the overall influence of a climatic driver to the
395 black pine upward shifting process. The research will continue on additional sites and with more
396 detailed geostatistical and tree-ring analyses for assessing the ascending dynamics of the treeline
397 ecotones and the specific contribution of climate change.

398

399 **Acknowledgments**

400 The study was partially financed by the UNIVPM “Ateneo” Research project No. 4524/2009
401 (Spatio-temporal dynamics of forest vegetation and climate change in the Marche region). We wish
402 to thank: the Monti Sibillini and the Gran Sasso-Monti della Laga National Parks for sampling
403 authorization; the Sirente-Velino Regional Park for sampling authorization and field work
404 assistance at SIR; Dr. Bruno Petriccione of the State Forest Service at L’Aquila for field assistance
405 at SIR; the TreeringLab and UNIVPM staff and students (Francesco Renzaglia, Valeria Gallucci,
406 Emidia Santini, Luca Bagnara, Matteo Giove, Andrea Cola, Simone Cingolani, Marco Altieri) for
407 field and laboratory assistance at all sites.

408

409

410

411

412

413 **References**

- 414 Andrews, J., Miller, G.R., Armstrong, H., 2000. The Effects of Mammalian Herbivores on Natural
415 Regeneration of Upland, Native Woodland. Scottish Natural Heritage.
- 416 Beniston, M., 2004. The 2003 heat wave in Europe: A shape of things to come? An analysis based
417 on Swiss climatological data and model simulations, *Geophys. Res. Lett.* 31.
- 418 Biondi, F., Waikul, K., 2004. DENDROCLIM2002: a C++ program for statistical calibration of
419 climate signals in tree-ring chronologies. *Computers and Geosciences* 30, 303-311.
- 420 Brunetti, M., Maugeri, M., Monti, F., Nanni, T., 2006. Temperature and precipitation variability in
421 Italy in the last two centuries from homogenised instrumental time series. *International Journal of*
422 *Climatology* 26, 345-381.
- 423 Camarero, J.J., Olano, J.M., Parras, A., 2010. Plastic bimodal xylogenesis in conifers from
424 continental Mediterranean climates. *New Phytologist* 185, 471–480.
- 425 Campelo, F., Nabais, C., Freitas, H., Gutiérrez, E., 2006. Climatic significance of tree- ring width
426 and intra-annual density fluctuations in *Pinus pinea* from a dry Mediterranean area in Portugal.
427 *Annals of Forest Science* 64, 229–238.
- 428 Campelo, F., Vieira, J., Nabais, C., 2013. Tree-ring growth and intra-annual density fluctuations of
429 *Pinus pinaster* responses to climate: does size matter? *Trees* 27,763-772.
- 430 Cherubini, P., Gartner, B.L., Tognetti, R., Braker, O.U., Schoch, W., Innes, J.L., 2003.
431 Identification, measurement and interpretation of tree rings in woody species from Mediterranean
432 climates. *Biological Reviews* 78, 119-148.
- 433 Cook, E.R., Peters, K., 1981. The Smoothing Spline: a new approach to standardizing forest interior
434 tree-ring width series for dendroclimatic studies. *Tree-Ring Bull.* 41, 45–53.

435 Cook, E.R., 1985. A time series analysis approach to tree ring standardization. PhD dissertation.
436 University of Arizona, Tucson.

437 Copenheaver C.A., Pokorski E.A., Currie J.E., Abrams M.D., 2006. Causation of false ring
438 formation in *Pinus banksiana*: A comparison of age, canopy class, climate and growth rate. *Forest*
439 *Ecology and Management* 236: 348-355.

440 Danby, R.K., Hik, D.S., 2007a. Responses of white spruce (*Picea glauca*) to experimental warming
441 at a subarctic alpine treeline. *Global Change Biology* 13, 437–451.

442 Daniels, L.D., Veblen, T.T., 2003. Regional and local effects of disturbance and climate on
443 altitudinal treelines in northern Patagonia. *Journal of Vegetation Science* 14, 733-742.

444 De Martonne, E., 1926. Une nouvelle fonction climatologique. L'indice d'aridité. *La Mètèò,*
445 *Associaton des Mètèorologues du Quebec, Quebec, 449-458 pp.*

446 De Luis, M., Gricar, J., Cufar, K., Raventós, J., 2007. Seasonal dynamics of wood formation in
447 *Pinus halepensis* from dry and semi-arid ecosystems in Spain. *IAWA Journal* 28, 389-404.

448 De Luis, M., Novak, K., Raventós, J., Gricar, J., Prislan, P., Cufar, K., 2011. Climate factors
449 promoting intra-annual density fluctuations in Aleppo pine (*Pinus halepensis*) from semiarid sites.
450 *Dendrochronologia* 29, 163-169.

451 Dirnböck T., Dullinger S., Grabherr G., 2003. A regional impact assessment of climate and land use
452 change on alpine vegetation. *J. Biogeogr.* 30, 401-417.

453 Dullinger, S., Dirnböck, T., Greimler, J., Grabherr, G. 2003. A resampling approach for evaluating
454 effects of pasture abandonment on subalpine plant species diversity. *Journal of Vegetation Science*
455 14 (2), 243-252.

456 Fernández, A., Génova, M., Creus, J., Gutiérrez, E., 1996. Dendro-climatological investigation
457 covering the last 300 years in central Spain. In *Tree Rings, Environment and Humanity*. Eds. Dean,
458 J.S., Meko, D.M., Swetman, T.W. Radiocarbon. U. of Arizona, Tucson, 181-190 pp.

459 Freléchoux, F., Meisse, M., Gillet, F. 2007. Succession secondaire et perte de diversité végétale
460 après réduction du broutage dans un pâturage boisé des Alpes centrales suisses. *Botanica Helvetica*
461 117 (1), 37-56, doi:10.1007/s00035-007-0791-1.

462 Fritts, H.C., 1976. *Tree rings and climate*. Academic Press, London, 567 pp.

463 Gallucci, V., Allegranza, M., Urbinati, C., 2010. Dinamismi spazio-temporali e sensitività climatica.
464 *Sherwood Foreste e Alberi Oggi* 164, 11-15.

465 Gehrig-Fasel, J., Guisan, A., Zimmerman, N.E., 2007. Tree line shifts in the Swiss Alps: climate
466 change or land abandonment? *Journal of Vegetation Science* 18, 571–582.

467 Greene, D.F., Johnson, E.A., 1997. Secondary dispersal of tree seeds on snow. *Journal of Ecology*
468 85, 329–340.

469 Harsch, M.A., Hulme, P.E., McGlone, M.S., Duncan, R.P., 2009. Are treelines advancing? A global
470 meta-analysis of treeline response to climate warming. *Ecology Letters* 12, 1040–1049.

471 Harsch, M.A., Bader, M., 2011. Treeline form-a potential key to understanding treeline dynamics.
472 *Global Ecology and Biogeography* 20, 582-596.

473 Holmes, R.L., 1983. Computer-assisted quality control in tree-ring dating and measurement. *Tree-*
474 *ring Bulletin* 43, 69-78.

475 Holtmeier, F., Broll, G., 2007. Treeline advance-driving processes and adverse factors. *Landscape*
476 *Online* 1, 1-33.

477 Holtmeier, F.K., Broll, G., 2005. Sensitivity and response of northern hemisphere altitudinal and
478 polar treelines to environmental change at landscape and local scales. *Global Ecology and*
479 *Biogeography*, 14(5), 395-410.

480 Isajev, V., Fady, B., Semerci, H., Andonovski, V., 2004. EUFORGEN Technical guidelines for
481 genetic conservation and use for European black pine (*Pinus nigra*). International Plant Genetic
482 Resources Institute, Rome (Italy), 6 pp.

483 Johnson, E.A., Fryer, G.I., 1992. Physical characterization of seed micro- sites movement on the
484 ground. *J Ecol* 80, 823-836.

485 Karlsson, H., Hornberg, G., Hannon, G., Nordstrom, E.M., 2007. Long-term vegetation changes in
486 the northern Scandinavian forest limit: a human impact-climate synergy?. *Holocene* 17, 37-49.

487 Körner, C., 2007. Climatic treelines: conventions, global patterns, causes. *Erdkunde* 61:316-324.

488 Kot, M., Lewis, M.A., Van Den Driessche, P., 1996. Dispersal data and the spread of invading
489 organisms. *Ecology* 77, 2027-2042.

490 Lang, O.L., Kappen, L., Schulze, E.D., 1976. *Water and plant life*. Springer, Berlin Heidelberg New
491 York.

492 Leal, S., Melvin, T.M., Grabner, M., Wimmer, R., Briffa, K.R., 2007. Tree-ring growth variability
493 in the Austrian Alps: the influence of site, altitude, tree species and climate. *Boreas* 36, 426-440.

494 Lebourgeois, F., 2000. Climatic signals in earlywood, latewood and total ring width of Corsican
495 pine from western France. *Ann. For. Sci.* 57, 155-164.

496 Martin-Benito D., Cherubini, P., Rìo, M., Cañellas, I., 2008. Growth response to climate and
497 drought in *Pinus nigra* Arn. trees of different crown classes. *Trees* 22, 363-373.

498 Motta, R., Nola, P., 2001. Growth trends and dynamics in sub-alpine forest stands in the Varaita
499 Valley (Piedmont, Italy) and their relationships with human activities and global change. *J Veg Sci*
500 12, 219-230.

501 Novak, K., De Luís, M.R., Raventós, J., Cufar, K., 2013. Climatic signals in tree-ring widths and
502 wood structure of *Pinus halepensis* in contrasted environmental conditions. *Trees*. DOI
503 10.1007/s00468-013-0845-5.

504 Osborn T.J., Briffa K.R., Jones P.D., 1997. Adjusting variance for sample-size in tree-ring
505 chronologies and other regional mean time series. *Dendrochronologia* 15, 89-99.

506 Pezzi, G., Ferrari, C., Corazza, M., 2008. The altitudinal limit of beech woods in the northern
507 Apennines (Italy): its spatial pattern and some thermal inferences. *Folia Geobot* 43, 447-459.

508 Piermattei, A., Renzaglia, F., Urbinati, C., 2012. Recent expansion of *Pinus nigra* Arn. above the
509 timberline in the central Apennines, Italy. *Annals of Forest Science* 69, 509-17.

510 Pinto-Correia, T., 1993. Land abandonment: changes in the land use patterns around the
511 Mediterranean basin. *Cahiers Options Méditerranéennes* 1(2), 97-112.

512 Poljanšek, S., Ballian, D., Nagel, T.A., Levanič, T., 2012. A 435-Year-Long European Black Pine
513 (*Pinus nigra*) Chronology for the Central-Western Balkan Region. *Tree-Ring Research* 68(1), 31-
514 44.

515 Richardson, M.D., 2000. *Ecology and Biogeography of Pinus*. Cambridge University Press, 1
516 edition, Cambridge, 535 pp.

517 Rigling, A., Braker, O., Schneiter, G., Schweingruber, F., 2002. Intra- annual tree-ring parameters
518 indicating differences in drought stress of *Pinus sylvestris* forests within the Erico-Pinion in the
519 Valais (Switzerland). *Plant Ecol* 163, 105–121.

520 Rivas-Martinez, S., Rivas-Saenz S., 2009. Worldwide Bioclimatic Classification System, 1996–
521 2009, Phytosociological Research Center, Spain.

522 Rivas-Martinez, S., Sanchez-Mata, D., Costa, M., 1999. North American boreal and Western
523 temperate forest vegetation (Syntaxonomical synopsis of the potential natural plant communities of
524 North America II). *Itinera Geobotanica* 12, 5-31.

525 Rossi S., Deslauriers A., Anfodillo T., Carraro V., 2007. Evidence of threshold temperatures for
526 xylogenesis in conifers at high altitudes. *Oecologia* 152:1-12.

527 Stanisci, A., Pelino, G., Blasi, C., 2005. Vascular plant diversity and climate change in the alpine
528 belt of the Central Apennines (Italy). *Biodivers Conserv* 14, 1301-1318.

529 Strumia, G., Wimmer, R., Grabner, M. 1997: Dendroclimatic sensitivity of *Pinus nigra* Arnold in
530 Austria. *Dendrochronologia* 15, 129-137.

531 Torrano, L., Valderrabano, J., 2005. Grazing ability of European black pine understory vegetation
532 by goats. *Small Ruminant Research* 58, 253-263.

533 Van Haverbeke, D.F., 1990. *Pinus nigra* Arnold European black pine. In: Burns, Russell M.;
534 Honkala, Barbara H., technical coordinators. *Silvics of North America. Volume 1. Conifers. Agric.*
535 *Handb.* 654. Washington, DC: U.S. Department of Agriculture, Forest Service: 395-404.

536 Van Oldenborgh, G.J., 1999. KNMI climate explorer. Koninklijk Nederlands Meteorologisch
537 Institut (KNMI), De Bilt, The Netherlands (access: <http://climexp.knmi.nl>).

538 Van Oldenborgh, G.J., Burgers, G., 2005. Searching for decadal variations in ENSO precipitation
539 teleconnections. *Geophysical Research Letters* 32(15), 1-5.

540 Vieira, J., Campelo, F., Nabais, C., 2009. Age-dependent responses of tree-ring growth and intra-
541 annual density fluctuations of *Pinus pinaster* to Mediterranean climate. *Trees* 23, 257-265.

542 Villalba R., Veblen T.T., 1994. A tree-ring record of dry spring wet summer events in the forest-
543 steppe ecotone northern Patagonia, Argentina. In: Dean JS, Meko DM, Swetnam TW, eds. Tree
544 rings environment and humanity. Radiocarbon, Spec., Issue 107-116.

545 Wang, T., Zhang, Q., Ma, K., 2006. Treeline dynamics in relation to climatic variability in the
546 central Tianshan Mountains, northwestern China. Global ecology and Biogeography 15, 406-415.

547 Wimmer, R., 2002. Wood anatomical features in tree-rings as indicators of environmental change.
548 Dendrochronologia 20, 21-36.

549 Zamora-Arroyo F., Nagler P.L., Briggs M., Radtke D., Rodriguez H., Garcia J., Valdes C., Huete
550 A., Glenn E.P., 2001. Regeneration of native trees in response to flood releases from the United
551 States into the delta of the Colorado River, Mexico. Journal of Arid Environments 49, 49-64.

552 Zhang, Y.J., Xu, M., Adams, J., Wang, X.C., 2009. Can Landsat imagery detect tree line dynamics?
553 International Journal of Remote Sensing 30, 1327-1340.

554

555 **Tables**556 **Table 1.** Main physiographic characteristics at the four study sites.

557

	Acuto (ACU)	Vettore (VET)	San Franco (SFR)	Sirente (SIR)
Latitude	43° 27' N	42° 81' N	42° 45' N	42° 15' N
Longitude	12° 42' E	13° 26' E	13° 38' E	13° 60' E
Peak elevation (m a.s.l.)	1668	2476	2132	2348
Slope aspect	N - NW	S - SE	W - SW	W - SW
Treeline elevation (m a.s.l.)	1350-1450	1600	1450-1600	-
Treeline forest type	Beech coppiced forest	Black pine plantation	Black pine plantation	-

558

559

560

561 **Table 2.** Meteorological data (mean annual temperature and annual precipitation) for the period
562 1961-1990 obtained from the local weather stations nearest to the four study sites.

563

Sites	Meteorological station (name, altitude, coordinates)	Mean Annual Temperature (°C)	Annual Precipitation (mm)
ACU	Fonte Avellana (689 m a.s.l.) 43°28'N-12°40'E	11.6	1210
VET	Montemonaco (987 m a.s.l.) 42°53'N-13° 19'E	11.1	1708
SFR	Campotosto (1430 m a.s.l.) 42°33'N, 13°22'E	7.8	994
SIR	Aquila (685 m a.s.l.) 42°22'N-13°21'E	11.7	732

564

565

566 **Table 3.** Summary statistics of main tree structural attributes at the four study sites. M = mean; SD
 567 = standard deviation; D = diameter at stem base; H = tree height; H_In = mean internode length;
 568 Age = cambial age at stem base.

569

Sites	Trees (n)	D (cm)		H (cm)		H_In (cm)		Age (yrs)	
		<i>M</i>	<i>SD</i>	<i>M</i>	<i>SD</i>	<i>M</i>	<i>SD</i>	<i>M</i>	<i>SD</i>
ACU	60	6.8	2.5	100.2	40.9	6.8	1.8	12	3.2
VET	147	6.1	3.7	100.8	61.8	8.5	3.1	11	5.4
SFR	192	4.7	3.6	72.7	54.1	6.9	2.7	10	3.3
SIR	69	7.7	4.8	114.9	67.0	8.0	2.4	12	4.5
<i>Total</i>	<i>468</i>	<i>5.9</i>	<i>3.9</i>	<i>91.3</i>	<i>59.4</i>	<i>7.5</i>	<i>2.8</i>	<i>11</i>	<i>4.3</i>

570

571

572

573

574

575

576

577

578

579

580

581

582

583

584

585

586 **Table 4.** Principal component loadings for the first two principal components at the four sites.

587 Loadings greater than 0.4 are indicated in bold.

588

	Axis	
	PC1	PC2
<i>% of variance</i>	46.68	20.40
<i>Cum. % of variance</i>	46.68	67.08
<i>p</i>	0.0001	0.0001
Stem diameter (D)	0.488	-0.091
Tree height (H)	0.492	-0.163
Cambial age (Age)	0.405	0.207
Age by internodes (Age_I)	0.463	0.080
Needle age (Nee)	-0.076	-0.596
Vigour (Vig)	-0.118	-0.596
Mean internode distance (H_In)	0.350	-0.326
Crown shape (Cro)	-0.005	-0.315

589

590

591 **Table 5.** Correlation coefficients (Spearman's ρ) between IADF annual frequency and climatic
 592 variables at the four study sites. T = mean annual temperature, P = annual precipitation, OI =
 593 Ombrothermic Index, OI2 = Ombrothermic Index of the two warmest months, OI3 = Ombrothermic
 594 Index of the warmest quarter, RF = Rain Factor, AI = Aridity Index. Significant values are
 595 indicated in bold character (* = $p < 0.05$; ** = $p < 0.01$) .

596

Site	T	P	OI	OI2	OI3	RF	AI
ACU	0.603**	-0.557**	-0.618**	-0.448**	-0.507*	-0.609**	-0.588**
VET	0.459**	-0.327	-0.415*	-0.447**	-0.329	-0.358*	-0.358*
SFR	0.167	-0.205	-0.218	-0.036	-0.056	-0.212	-0.208
SIR	0.492*	-0.433**	-0.472**	-0.502**	-0.570**	-0.465**	-0.440**

597

598

599

600

601

602

603

604

605

606

607

608

609

610 **Figure captions**

611

612 **Figure 1.** Location of the four study areas in the Marche (ACU, VET) and Abruzzo (SFR, SIR)
613 regions, in the Central Italy.

614

615 **Figure 2.** Landscape view of the treeline ecotones at the four study sites of Central Apennines: a)
616 Mt. Acuto (ACU); b) Mt. Vettore (VET); c) Mt. San Franco (SFR); d) Mt. Sirente (SIR).

617

618 **Figure 3.** Scatter plot and regression lines of elevation and age of pine trees at the four treeline
619 sites.

620

621 **Figure 4.** Principal component analysis of structural attributes surveyed at the four treeline
622 ecotones. Full line arrows represent tree descriptors: D = diameter at root collar; H = tree height;
623 H_In = mean height of internodes; Age = cambial age; Age_In = estimated age by number of
624 internodes; Cro = crown shape; Vig = tree vigour; Nee: years of permanence of needles on the
625 branch stem. Grey symbols indicate sampled trees at each site (triangles: ACU; circles: SFR;
626 squares: VET; diamonds: SIR), black symbols are the centroids of all the trees at the same site.
627 Grey polylines are convex hulls indicating the maximum surface area occupied by trees belonging
628 to the same site. The first and second principal component were significant ($p < 0.001$, Monte Carlo
629 test) and accounted respectively for 46.7% and 20.4% of the total amount of variation.

630

631 **Figure 5.** Frequency distribution (in %) of sampled individuals according to their cambial age. Age
632 was determined from increment cores extracted at the lowest possible height at the stem base of
633 pine trees having diameter ≥ 4 cm (68 cores extracted at ACU, 150 at VET, 112 at SFR and 99 at
634 SIR).

635

636 **Figure 6.** Scatter plot of mean radial and mean height increments at four study sites (black circles:
637 ACU; white squares: VET; grey triangles: SFR; white circles: SIR). The R^2 values are respectively
638 0.55, 0.52, 0.31, 0.26, all significant at $p < 0.05$.

639

640 **Figure 7.** Correlation functions between mean tree-ring indexed chronologies and total monthly
641 precipitation and mean monthly maximum temperatures for the previous (small letters) and current
642 (capital letters) growth year. Standardized coefficients were obtained by dividing the mean
643 correlations by their standard deviations after the bootstrap replications. They express the
644 significance of monthly parameters. Black horizontal lines are the $p < 0.05$ significance thresholds
645 (Student $t \pm 1.96$).

646

647 **Figure 8.** Intra-Annual Density Fluctuations (IADF) within the latewood of encroached *Pinus nigra*
648 in two different samples and in two different years: A) IADF type L with earlywood-like cells
649 within the latewood; B) IADF type L^+ with earlywood-like cells between latewood and earlywood
650 of the following tree ring (Campelo et al., 2013).

651

652 **Figure 9.** Yearly distributions of stabilized IADF frequencies at the four study sites.

653

654

655

656

657

658

659

660

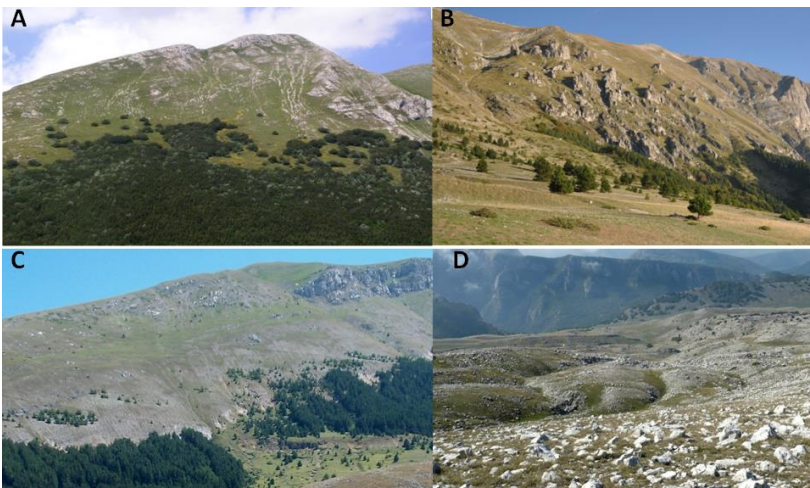
661

662 Fig.1



663

664 Fig.2



665

666

667

668

669

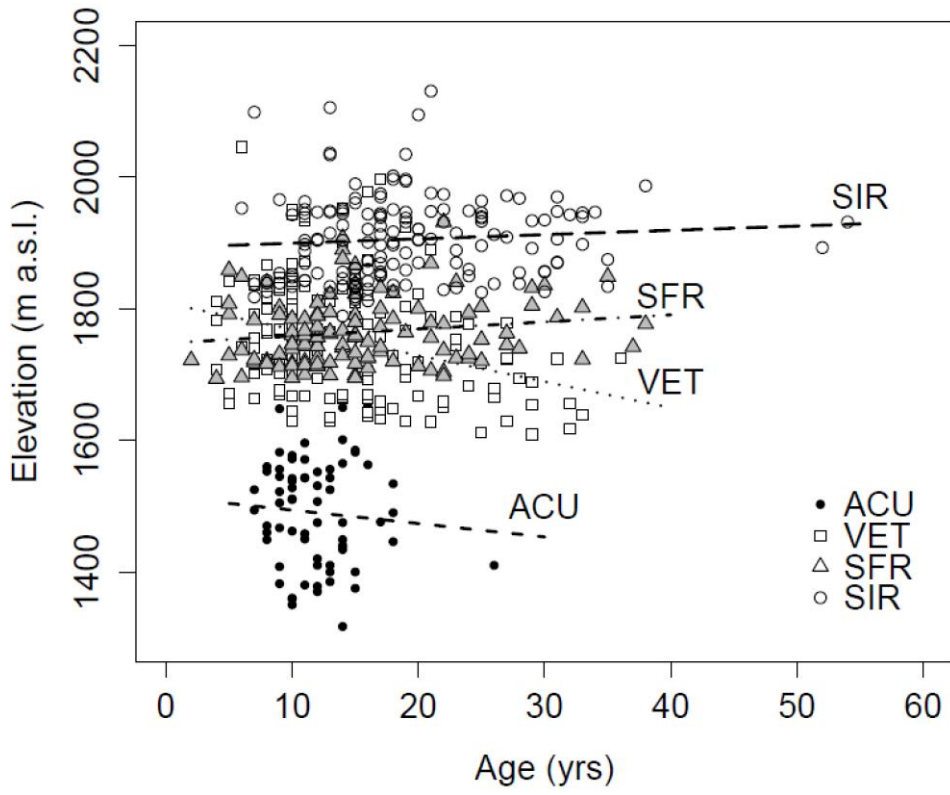
670

671

672

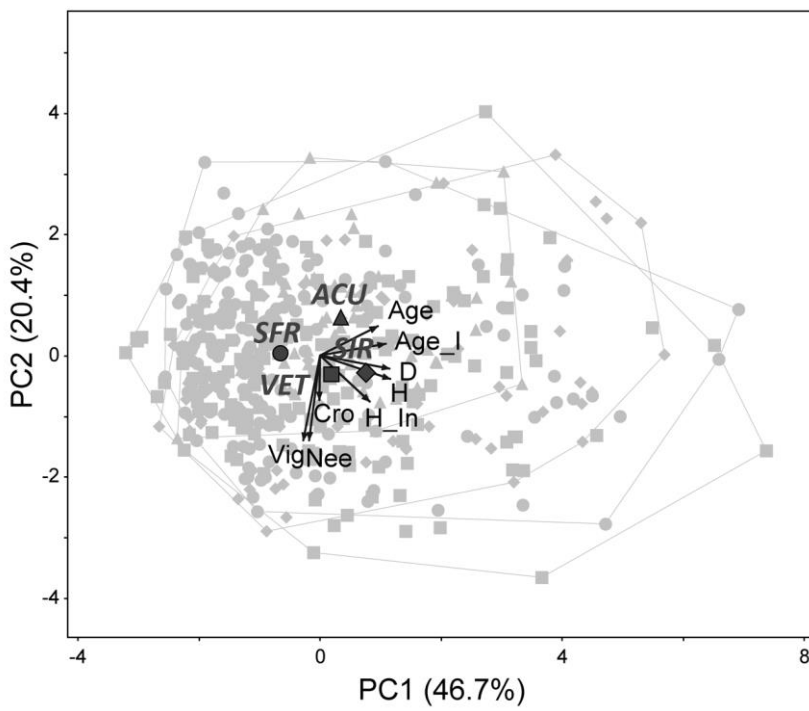
673

674 Fig.3



675

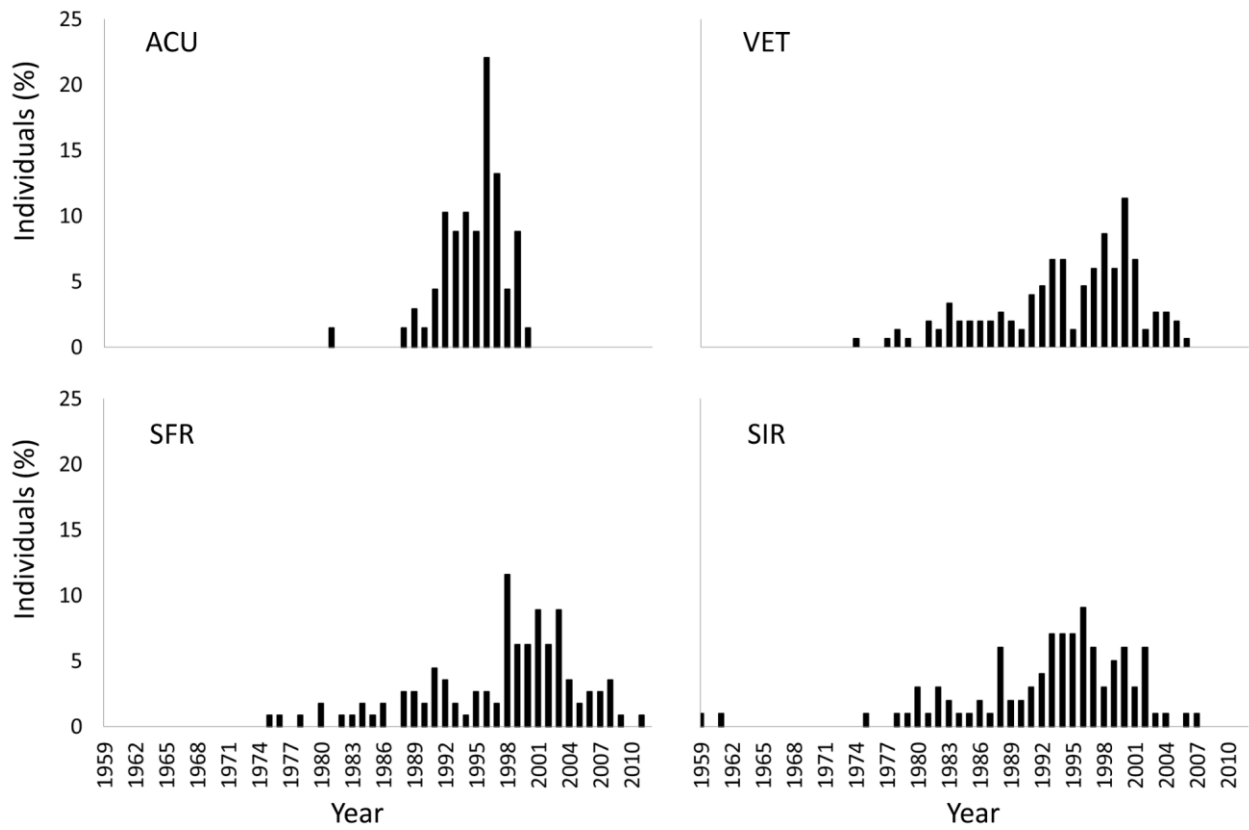
676 Fig.4



677

678

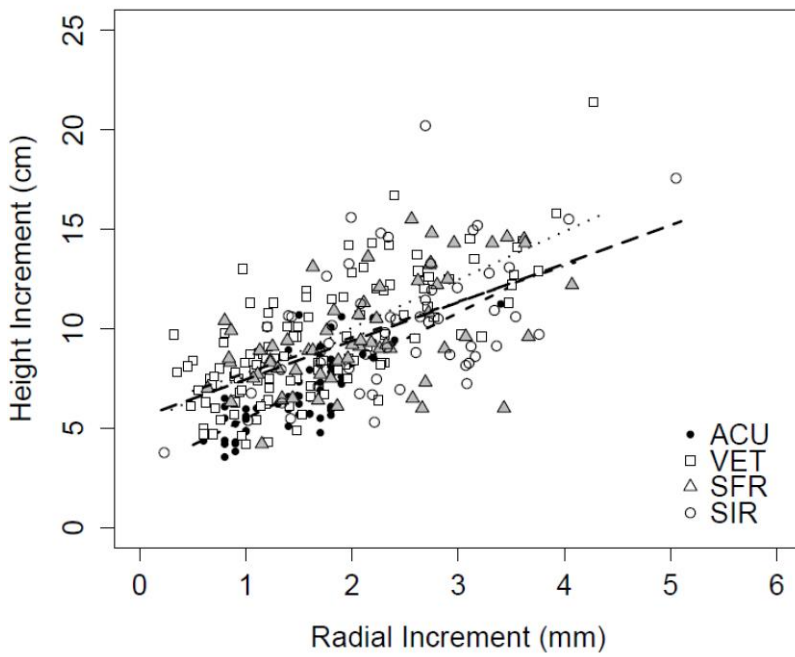
679 Fig.5



680

681

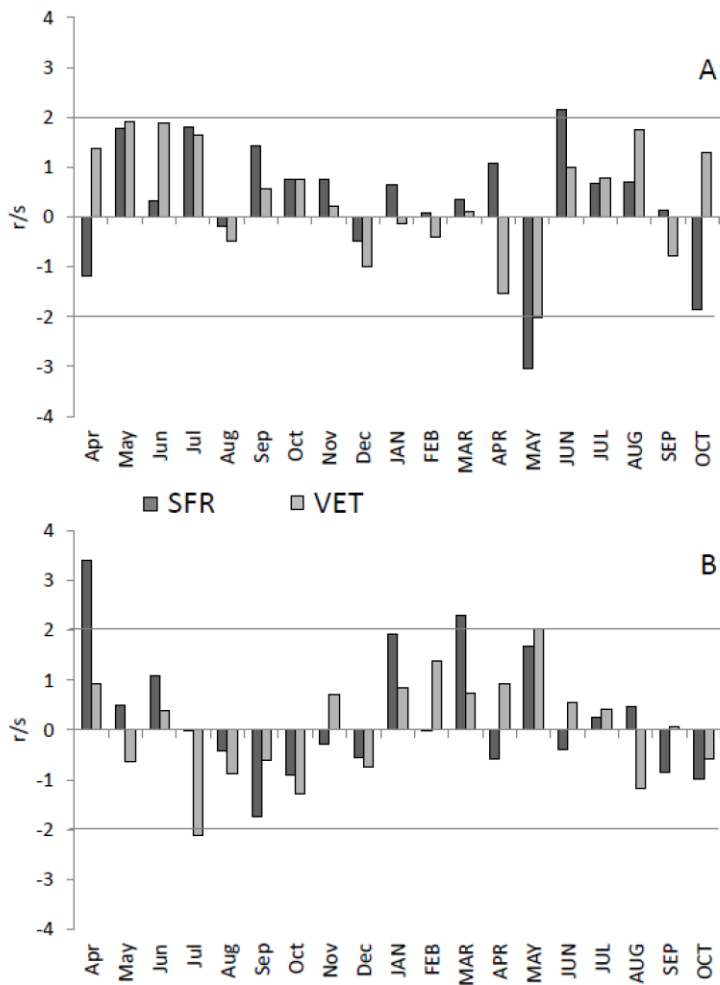
682 Fig.6



683

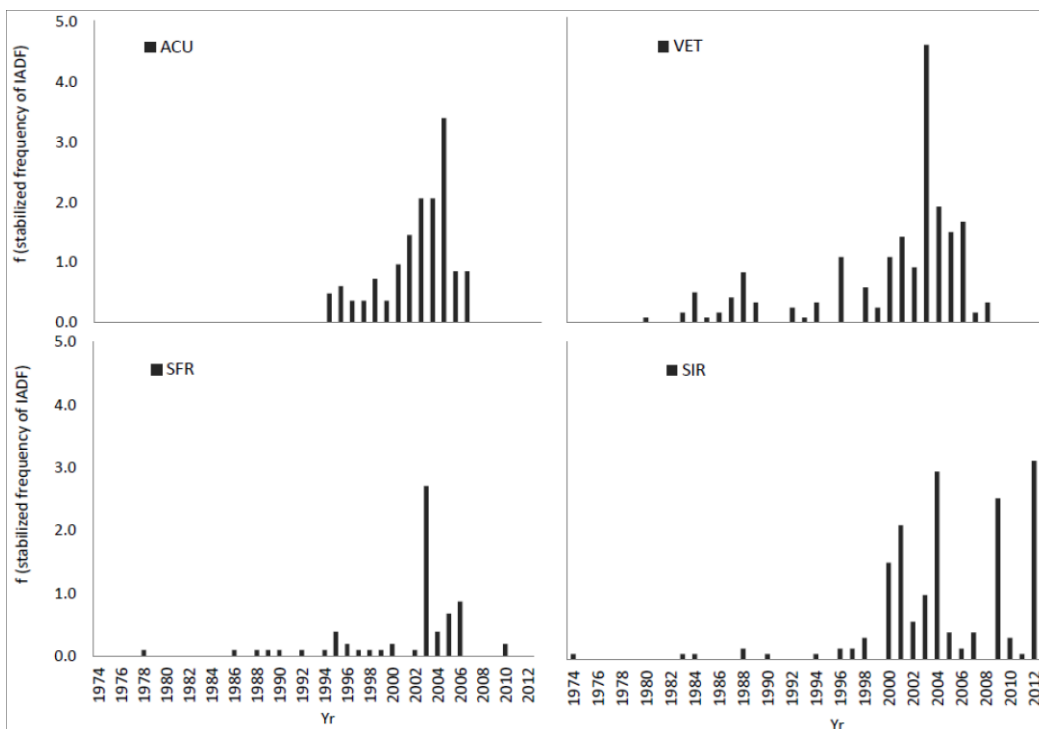
684

685 Fig.7



686

687 Fig.8



688

