

AperTO - Archivio Istituzionale Open Access dell'Università di Torino

Addition of elotuzumab to lenalidomide and dexamethasone for patients with newly diagnosed, transplantation ineligible multiple myeloma (ELOQUENT-1): an open-label, multicentre, randomised, phase 3 trial

This is the author's manuscript

Original Citation:

Availability:

This version is available <http://hdl.handle.net/2318/1862742> since 2023-02-03T17:53:45Z

Published version:

DOI:10.1016/S2352-3026(22)00103-X

Terms of use:

Open Access

Anyone can freely access the full text of works made available as "Open Access". Works made available under a Creative Commons license can be used according to the terms and conditions of said license. Use of all other works requires consent of the right holder (author or publisher) if not exempted from copyright protection by the applicable law.

(Article begins on next page)

This is the author's final version of the contribution published as:

Dimopoulos MA, Richardson PG, Bahlis NJ, Grosicki S, Cavo M, Beksac M, Legieć W, Liberati AM, Goldschmidt H, Belch A, Magen H, Larocca A, Laubach JP, Petrucci MT, Reece D, White D, Mateos MV, Špička I, Lazaroiu M, Berdeja J, Kaufman JL, Jou YM, Ganetsky A, Popa McKiver M, Lonial S, Weisel K; ELOQUENT-1 investigators. Addition of elotuzumab to lenalidomide and dexamethasone for patients with newly diagnosed, transplantation ineligible multiple myeloma (ELOQUENT-1): an open-label, multicentre, randomised, phase 3 trial. *Lancet Haematol.* 2022 May 9:S2352-3026(22)00103-X. doi: 10.1016/S2352-3026(22)00103-X. PMID: 35550060.

© 2022 The Author(s). Published by Elsevier Ltd.

The publisher's version is available at:

[https://www.thelancet.com/journals/lanhae/article/PIIS2352-3026\(22\)00103-X/fulltext](https://www.thelancet.com/journals/lanhae/article/PIIS2352-3026(22)00103-X/fulltext)
[https://doi.org/10.1016/s2352-3026\(22\)00103-x](https://doi.org/10.1016/s2352-3026(22)00103-x)

When citing, please refer to the published version.**Link to this full text:**

<http://hdl.handle.net/2318/1862742>

This full text was downloaded from iris-AperTO: <https://iris.unito.it/>

Elotuzumab, lenalidomide, and dexamethasone for patients with newly diagnosed, transplant ineligible multiple myeloma: results from the randomised, open-label, phase 3 ELOQUENT-1 trial

Authors

Meletios A Dimopoulos, Paul G Richardson, Nizar J Bahlis, Sebastian Grosicki, Michele Cavo, Meral Beksaç, Wojciech Legieć, Anna M Liberati, Hartmut Goldschmidt, Andrew Belch, Hila Magen, Alessandra Larocca, Jacob P Laubach, Maria T Petrucci, Donna Reece, Darrell White, María-Victoria Mateos, Ivan Špička, Mihaela Lazaroiu, Jesús Berdeja, Jonathan L Kaufman, Ying-Ming Jou, Alex Ganetsky, Mihaela Popa McKiver, Sagar Lonial, Katja Weisel *on behalf of the ELOQUENT-1 investigators*

Affiliations

National and Kapodistrian University of Athens School of Medicine, Athens, Greece (Prof M A Dimopoulos MD);

Dana-Farber Cancer Institute, Boston, MA, USA (Prof P G Richardson MD, J P Laubach MD);

Arnie Charbonneau Cancer Research Institute, University of Calgary, Calgary, AB, Canada (Prof N J Bahlis MD);

Medical University of Silesia, Katowice, Poland (Prof S Grosicki MD);

IRCCS Azienda Ospedaliero-Universitaria di Bologna, Istituto di Ematologia “Seràgnoli”, Dipartimento di Medicina Specialistica, Diagnostica e Sperimentale, Università degli Studi di Bologna, Bologna, Italy (Prof M Cavo MD);

Ankara University, Ankara, Turkey (Prof M Beksaç MD);

Center of Oncology of the Lublin Region St. Jana z Dukli, Lublin, Poland (W Legieć MD);

Universita degli Studi di Perugia, Perugia, Italy (Prof A M Liberati MD);

University Hospital Heidelberg, Internal Medicine V and National Center for Tumor Diseases (NCT), Heidelberg, Germany (Prof H Goldschmidt MD);

Cross Cancer Institute, University of Alberta, Edmonton, AB, Canada (Prof A Belch MD);

Department of Hematology, Chaim Sheba Medical Center, Ramat Gan, and Sackler Faculty of Medicine, Tel Aviv University, Tel Aviv, Israel (H Magen MD);

SSD Clinical Trial in Oncoematologia e Mieloma Multiplo, Division of Hematology, University of Torino, Azienda Ospedaliero-Universitaria Città della Salute e della Scienza di Torino, Torino, Italy (A Larocca MD);

Sapienza Università di Roma, Rome, Italy (M T Petrucci MD);

Princess Margaret Cancer Centre, Toronto, ON, Canada (D Reece MD);

Queen Elizabeth II Health Sciences Centre and Dalhousie University, Halifax, NS, Canada (Prof D White MD);

¹⁶University Hospital of Salamanca–Instituto de Investigación Biomédica de Salamanca, Centro de Investigación del Cáncer-IBMCC (USAL-CSIC), Salamanca, Spain (M-V Mateos MD);

Charles University and General Teaching Hospital, Prague, Czech Republic (Prof I Špička MD);

Policlinica de Diagnostic Rapid, Braşov, Romania (M Lazaroiu MD);

Sarah Cannon Research Institute and Tennessee Oncology, Nashville, TN, USA (J Berdeja MD);

Winship Cancer Institute, Emory University, Atlanta, GA, USA (J L Kaufman MD, Prof S Lonial MD);

Bristol Myers Squibb, Princeton, NJ, USA (Y-M Jou PhD, A Ganetsky PharmD, M Popa McKiver MD);

University Medical Center of Hamburg-Eppendorf, Hamburg, Germany (Prof K Weisel MD)

Correspondence to:

Prof. Meletios Dimopoulos, 80 Vasilissis Sofias Ave, Athens 11528, Athens, Greece;

mdimop@med.uoa.gr; Tel: +30 210 338 1540

Summary

Background Elotuzumab plus lenalidomide and dexamethasone (ERd) has improved progression-free and overall survival versus lenalidomide and dexamethasone (Rd) in relapsed/refractory multiple myeloma. We assessed ERd in patients with newly diagnosed multiple myeloma ineligible for stem-cell transplantation (SCT).

Methods This multicentre, randomised, controlled, open-label, phase 3 trial (ELOQUENT-1) recruited patients from 185 hospitals, oncology practices, or research centres from 19 countries. Eligible patients were aged ≥ 18 years with newly diagnosed, untreated, symptomatic myeloma and not candidates for high-dose therapy plus SCT. Patients were randomised (1:1) to ERd or Rd stratified by ISS stage, age, and ECOG performance status. Patients in the ERd group received intravenous elotuzumab 10 mg/kg weekly in cycles 1–2, every two weeks in cycles 3–18, and 20 mg/kg every four weeks thereafter. Patients in both groups received 25 mg oral lenalidomide on days 1–21 of each cycle and 40 mg oral equivalent dexamethasone weekly. The primary endpoint was progression-free survival (per protocol) per independent review committee according to European Society for Blood and Marrow Transplantation (EBMT) criteria. The trial is registered with ClinicalTrials.gov, NCT01335399. Recruitment is complete.

Findings Between August 4, 2011, and June 19, 2014, 965 patients were enrolled and 748 randomised to ERd (n=374) or Rd (n=374). At a minimum follow-up of 65.3 months, median progression-free survival was 31.4 months (95% CI 26.2–36.8) with ERd and 29.5 months (23.5–34.3) with Rd (hazard ratio 0.93, 95.71% CI 0.77–1.12; p=0.44). The most common grade 3–4 treatment-related adverse event was neutropenia (64 [17%] of 371 patients with ERd vs 79 [21%] of 371 with Rd). Treatment-related deaths occurred in five patients (1%) with ERd and four (1%) with Rd.

Interpretation ERd did not significantly improve progression-free survival versus Rd in patients with newly diagnosed multiple myeloma ineligible for SCT. While these data contribute to the treatment landscape, further research is needed to find optimal treatments.

Funding Bristol Myers Squibb.

Research in context

Evidence before this study We searched for articles on PubMed and abstracts from major oncology congresses for studies relevant to newly diagnosed multiple myeloma in patients ineligible for stem cell transplantation and patients with relapsed/refractory multiple myeloma, with a focus primarily on phase 3 trials. Search terms included, but were not limited to, “newly diagnosed multiple myeloma”, “relapsed/refractory multiple myeloma”, “immunotherapy”, “proteasome inhibitors”, “immunomodulatory”, “elotuzumab”, “lenalidomide”, and “dexamethasone”, and relevant articles published from database inception to March 17, 2021 were identified. In the relapsed/refractory multiple myeloma setting, on the basis of results from ELOQUENT-2 and ELOQUENT-3, elotuzumab demonstrated a 30% and 46% reduction in the risk of disease progression or death in combination with lenalidomide/dexamethasone (ERd) and pomalidomide/dexamethasone (EPd), respectively. At the time of the ELOQUENT-1 study design (2011), regimens commonly used for newly diagnosed multiple myeloma included melphalan-based regimens with bortezomib, or immunomodulatory drugs including thalidomide, or lenalidomide-based regimens. The phase 3 FIRST study demonstrated that treatment with lenalidomide and dexamethasone (Rd) significantly improved survival outcomes versus melphalan, prednisone, and thalidomide in transplant-ineligible patients with newly diagnosed multiple myeloma, and Rd is now one of the standards of care. Phase 3 trials have evaluated several agents in combination with Rd in this setting: bortezomib (VRd), daratumumab (DRd), carfilzomib (KRd), and ixazomib (IRd); however, only VRd and DRd have demonstrated statistically significant benefits in progression-free survival compared with Rd. Thus, front-line treatments that significantly improve outcomes over existing standards of care are still needed.

Added value of this study Here we present results from the phase 3, international, randomised ELOQUENT-1 study, which assessed ERd compared with Rd for the treatment of patients with newly diagnosed, previously untreated multiple myeloma who were ineligible for stem cell transplantation. ERd did not demonstrate a statistically significant improvement in progression-free survival compared with Rd; however, these data contribute to the evolving treatment landscape for newly diagnosed multiple myeloma. Overall response rates were similar between treatment groups. Treatment with ERd was well tolerated and no new safety signals were identified beyond those reported in other studies of ERd or EPd.

Implications of all the available evidence Data from ELOQUENT-1 demonstrate that ERd did not meet the primary endpoint of improved progression-free survival versus Rd for the treatment of patients with newly diagnosed multiple myeloma ineligible for stem cell transplantation. Although effective in the relapsed/refractory multiple myeloma setting, the negative results of ERd, and also KRd and IRd, may reflect the challenge of improving treatment outcomes in the newly diagnosed setting. The reasons for this are currently unknown and further research is required to investigate the difference in treatment responses between patients in the newly diagnosed and relapsed/refractory settings. A search for triplet regimens with improved outcomes is ongoing.

Introduction

Effective first-line treatments for patients with multiple myeloma who are ineligible for stem cell transplantation are critical. Durability of response is limited once patients have relapsed/refractory disease and decreases with an increased number of prior lines of therapy.¹⁻⁵ The introduction of novel therapeutic agents in the first-line setting, including immunomodulatory drugs and proteasome inhibitors, has improved outcomes and reduced mortality, especially in elderly patients.⁶ The large phase 3 FIRST study demonstrated that the combination of the immunomodulatory drug lenalidomide and dexamethasone (Rd) as an all-oral doublet significantly prolonged progression-free survival and overall survival compared with melphalan, prednisone, and thalidomide in transplant-ineligible patients with newly diagnosed multiple myeloma, and established Rd as a standard of care in this setting.^{7,8} Since then, triplet regimens combining a proteasome inhibitor or a monoclonal antibody with Rd have also become standard treatments.⁹⁻¹²

Elotuzumab is a humanized immunoglobulin G1 immunostimulatory monoclonal antibody that targets signalling lymphocytic activation molecule family member 7, a glycoprotein highly expressed on myeloma cells, natural killer (NK) cells, and some immune cells, but not on other normal tissues.¹³ Elotuzumab exerts its effect via multiple mechanisms, including NK cell activation, NK cell-mediated antibody-dependent cellular cytotoxicity, and macrophage-mediated antibody-dependent cellular phagocytosis.¹³⁻¹⁶

The benefit of elotuzumab plus Rd (ERd) has been demonstrated in the relapsed/refractory multiple myeloma setting in the phase 3 ELOQUENT-2 study.¹⁷ At the primary analysis, ERd reduced the risk of disease progression or death by 30%, with acceptable toxicity.¹⁷ These results led to the approval of ERd for the treatment of patients with relapsed/refractory multiple myeloma who had received ≥ 1 prior therapy. The progression-free survival benefit with ERd was sustained through the 5-year follow-up and at the final overall survival analysis, ERd reduced the risk of death by 18% compared with Rd.¹⁸⁻²⁰

Here, we report the findings from ELOQUENT-1, a large, international study, which assessed whether ERd improved progression-free survival compared with Rd for the treatment of patients with newly diagnosed multiple myeloma who were ineligible for stem cell transplantation.

Methods

Study design and participants

ELOQUENT-1 is a phase 3, open-label, multicentre, randomised, controlled study carried out at 185 hospitals, oncology practices or research centres in 19 countries (appendix pp 2–10).

Eligible patients were aged ≥ 18 years with newly diagnosed, untreated, symptomatic myeloma per European Society for Blood and Marrow Transplantation (EBMT) criteria who were not candidates for high-dose therapy plus stem cell transplantation due to age (≥ 65 years) or comorbidities. Patients (< 65 years) without comorbidities who refused to undergo high-dose therapy with stem cell transplantation were not eligible for

study entry. Patients had measurable disease (serum immunoglobulin G, A, or M, M-protein ≥ 0.5 g/dL, serum immunoglobulin D ≥ 0.05 g/dL, or urine M-protein ≥ 200 mg/24 h), an Eastern Cooperative Oncology Group (ECOG) performance status ≤ 2 , creatinine clearance ≥ 30 mL/min, and a life expectancy >3 months. Key exclusion criteria were non-secretory, oligo-secretory, or serum free light chain only myeloma; smouldering multiple myeloma and monoclonal gammopathy of undetermined significance; Waldenström's disease; plasma cell leukaemia; significant cardiac disease; prior cerebrovascular event with persistent neurological effect; prior or concurrent malignancy (except treated basal cell carcinoma, squamous skin cell cancer, or any other disease-free cancer for >5 years); and uncontrolled diabetes. Prior systemic chemotherapy, immunotherapy, or investigational agents for multiple myeloma were not permitted. The full exclusion criteria are shown in the appendix (pp 11–12).

This study was conducted in accordance with Good Clinical Practice, as defined by the International Conference on Harmonisation and the Declaration of Helsinki. The protocol, amendments, patient consent forms, and patient recruitment materials received approval by the institutional review boards and independent ethics committees at each study site prior to initiation of the study. All patients provided written informed consent.

The study was overseen by an independent data monitoring committee. Results for the final analysis of the primary endpoint are presented here. This study is registered at ClinicalTrials.gov (NCT01335399). The full study protocol is available online at https://clinicaltrials.gov/ProvidedDocs/99/NCT01335399/Prot_001.pdf.

Randomisation and masking

The study design and treatment regimens are shown in the appendix (p 41; supplementary figure 1). Enrolment was done by study centre staff who were trained on study eligibility requirements. Eligible patients were randomised 1:1 to receive ERd or Rd via an interactive voice response system. Randomisation was stratified by International Staging System (ISS) stage (I–II vs III), age (<75 vs ≥ 75 years), and ECOG performance status (0 vs 1–2), and was done using permuted blocks of size 4 within each stratum. Patients and investigators were not masked to treatment assignment.

Procedures

Treatment was administered in 28-day cycles until disease progression, unacceptable toxicity, or withdrawal of consent. Patients in the ERd group received elotuzumab (Bristol Myers Squibb, Princeton, USA) administered intravenously at a dose of 10 mg/kg on days 1, 8, 15, and 22 during cycles 1 and 2, days 1 and 15 for cycles 3–18, and then at a dose of 20 mg/kg on day 1 for subsequent cycles (appendix p 41). In both treatment groups, patients received lenalidomide (Bristol Myers Squibb, Princeton, USA) 25 mg orally on days 1–21 of each cycle, and 40 mg dexamethasone (Merck & Co, Kenilworth, USA) on days 1, 8, 15, and 22 of each cycle (split 28 mg oral and 8 mg intravenous dose on weeks of elotuzumab administration in the ERd group). Further information on elotuzumab infusion and premedication is in the appendix (p 12). The lenalidomide starting dose was to be adjusted based on the severity of renal impairment, while the dexamethasone starting dose was not adjusted for age. Further information regarding dose interruption or

reduction can be found in the appendix (p 13). Patients were followed every 4 weeks for tumour response until confirmed disease progression, then every 16 weeks (or more frequently) for survival, subsequent myeloma therapy, and development of second primary malignancy. Tumour assessments were based on the European Society for Blood and Bone Marrow Transplantation criteria (evaluation of stringent complete response and very good partial response was per the uniform response criteria of the International Myeloma Working Group^{21,22}). Details regarding further assessments, including the frequency and types of laboratory and adverse event monitoring, are outlined in the appendix (pp 14–15).

Outcomes

The primary endpoint was progression-free survival per EBMT criteria based on independent review committee assessment using the primary definition of progression-free survival. Secondary endpoints were overall response rate per independent review committee, progression-free survival rates at 1 to 5 years, overall survival, and change from baseline in the mean scores of pain severity and pain interference in the Brief Pain Inventory–Short Form. Exploratory endpoints included time to and duration of response, time to next treatment, progression-free survival after the next line of treatment, and safety (appendix p 15).

Progression-free survival was defined, per protocol, as the time from randomisation to the date of first documented tumour progression or death, whichever occurred first. For the primary definition of progression-free survival used for the primary endpoint, censoring rules were applied for patients who received subsequent therapy prior to disease progression, those with a progression-free survival event more than 10 weeks after the last prior tumour assessment (missed two or more assessments), and those who did not progress or die. Clinical deterioration was not considered progression (see appendix p 16 for additional details). Progression-free survival under the intent-to-treat definition and relative censoring rules are described in the appendix (p 16). Overall response rate was defined as the proportion of randomised patients who achieved partial response or better. Overall survival was defined as the time from randomisation to the date of death. Additional outcomes are defined in the appendix (p 16).

Safety evaluations included assessments of adverse events and serious adverse events, clinical laboratory tests, vital signs, and physical examination with assessment of ECOG performance status. Adverse events were defined using the National Cancer Institute Common Terminology Criteria for Adverse Events, version 3.0, and were counted according to their worst grade.

Statistical analysis

Approximately 750 patients were planned to be randomised to obtain at least 482 progression events (disease progression or death). It was estimated that 482 events would provide 90.5% power to detect a hazard ratio (HR) of 0.74 for disease progression or death with a two-sided type I error rate of 5% and one planned interim analysis. Additional interim analysis details are described in the appendix (p 16). The independent data monitoring committee's recommendation at this interim analysis was to continue the trial to final analysis. Accounting for an alpha of 0.0244 (2-sided) at interim analysis, the remaining alpha for the final analysis of progression-free survival was 0.0429 (2-sided) and an observed p-value smaller than the

threshold (or, equivalently, the 95·71% confidence interval [CI] for HR excluding 1) would indicate statistical significance. A hierarchical testing procedure was used to preserve a family-wise type 1 error rate of 5% for the primary endpoint and the two secondary endpoints of overall response rate and overall survival. Overall response rate was formally tested only if the primary endpoint was met, and overall survival was formally tested only if the overall response rate was statistically significant.

Analyses of baseline characteristics and efficacy outcomes were conducted in all randomised patients. Extent-of-exposure and safety analyses were performed in the treated population, which consisted of all patients who received ≥ 1 dose of study medication. The distribution and median of each censored time-to-event endpoint was estimated using the Kaplan–Meier product limit method. The Brookmeyer and Crowley method was used to calculate the 95% CI for the median of each time-to-event endpoint. A two-sided stratified log-rank test was used to compare progression-free survival (and overall survival if appropriate) between groups using the same stratification factors used in randomisation. A stratified Cox proportional hazards model was used to estimate the HR and corresponding CI of the ERd group to the Rd group for progression-free survival and overall survival. Overall response rates between treatment groups were compared using the Cochran–Mantel–Haenszel method stratified by the same factors used in randomisation. An estimate of the treatment odds ratio and corresponding two-sided 95% CI was presented. Statistical analyses were performed using the Statistical Analysis System, version 9·2.

Role of the funding source

The study was designed by the sponsors (Bristol Myers Squibb and AbbVie Biotherapeutics). Bristol Myers Squibb oversaw data collection and contributed to data analysis and interpretation in collaboration with the authors. All authors attest that the trial was conducted in accordance with the protocol (https://clinicaltrials.gov/ProvidedDocs/99/NCT01335399/Prot_001.pdf) and vouch for the accuracy and completeness of the data and analyses and approved the manuscript for submission. All authors had full access to the data reported from the study. The corresponding author had final responsibility for the decision to submit for publication. The manuscript was prepared with professional medical writing assistance funded by Bristol Myers Squibb.

Results

Of the 965 patients enrolled between August 4, 2011, and June 19, 2014, 748 were randomised (ERd, n=374; Rd, n=374) and 742 were treated (ERd, n=371; Rd, n=371; figure 1). Baseline demographics and disease characteristics were generally balanced between the two treatment groups (table 1). The median age of the overall study population was 73·0 years (interquartile range [IQR] 69·0–78·0); 294 (39%) patients were ≥ 75 years. The proportions of patients with high-risk disease, defined as ISS stage II or III and t(4;14) or del(17p) abnormality per International Myeloma Working Group criteria,²³ were similar between treatment groups (ERd, n=31 [8%]; Rd, n=35 [9%]). Renal impairment (creatinine clearance <60 mL/min) was present in 146 (39%) and 173 (46%) patients in the ERd and Rd groups, respectively.

At database lock (December 3, 2019), after a minimum follow-up of 65.3 months, 38 (10%) patients in the ERd group versus 32 (9%) patients in the Rd group remained on therapy. In total, 333 (90%) and 339 (91%) patients, respectively, discontinued treatment, mainly due to disease progression ($n=114$ [31%] vs $n=141$ [38%]) or to adverse events (unrelated to study drug, $n=105$ [28%] vs $n=65$ [18%]; study drug toxicity, $n=51$ [14%] vs $n=64$ [17%]; figure 1). The median number of treatment cycles was 26 (IQR 9–53) in the ERd group and 21 (IQR 8–46) in the Rd group. In the ERd group, median duration of treatment was 23.0 months (IQR 6.5–49.5) for elotuzumab, 23.7 months (IQR 6.7–46.7) for lenalidomide, and 23.7 months (IQR 7.4–49.0) for dexamethasone. In the Rd group, median duration of treatment was 18.9 months (IQR 7.1–41.6) for lenalidomide and 16.1 months (IQR 6.9–35.4) for dexamethasone. Details on dose intensity for each agent are in the appendix (p 17, supplementary table 1).

At the final analysis, the study did not meet the primary endpoint of progression-free survival. At this time, 586 patients had experienced disease progression or died (ERd, 291/374 [78%]; Rd, 295/374 [79%]). The median progression-free survival was 31.4 months (95% CI 26.2–36.8) in the ERd group versus 29.5 months (95% CI 23.5–34.3) in the Rd group (figure 2A). The HR for progression-free survival was 0.93 (95.71% CI 0.77–1.12; stratified log-rank $p=0.44$). The progression-free survival rates at 5 years were 26% (95% CI 21–32) with ERd and 25% (95% CI 20–30) with Rd; rates at 1 to 4 years were similar between treatment groups (figure 2A). A total of 130 (35%) of 374 patients in the ERd group and 134 (36%) of 374 in the Rd group were censored in the progression-free survival analysis; 32 (9%) and 43 (11%) patients, respectively, were censored due to initiating subsequent systemic therapy prior to disease progression. The actual time to accumulation of events required for progression-free survival analysis was 65 months versus the estimated time of 29 months. Progression-free survival results with ERd and Rd were consistent across key patient subgroups (figure 2B). The median progression-free survival per the intent-to-treat definition was 29.5 months (95% CI 25.3–33.2) in the ERd group versus 26.7 months (95% CI 22.1–30.5) in the Rd group with an HR of 0.92 (95.71% CI 0.77–1.09) (appendix p 42, supplementary figure 2).

As the primary endpoint of this study was not met, overall response rate and overall survival analyses were descriptive. The overall response rate was 83% (95% CI 79–87) in the ERd group and 79% (95% CI 75–83) in the Rd group, with an odds ratio of 1.26 (95% CI 0.87–1.82; table 2). The proportion of patients who achieved very good partial response or better was 53% and 49% in the ERd and Rd groups, respectively. Among responders, the median time to response was 1.1 months (IQR 1.0–2.3) in the ERd group and 1.9 months (IQR 1.0–2.8) in the Rd group. The median time to best response was also similar between treatment groups (ERd, 5.6 months [IQR 1.9–15.3]; Rd, 4.7 months [IQR 2.0–12.5]). The median duration of response was approximately 33 months for both ERd (33.2 months [95% CI 28.2–38.2]) and Rd (33.1 months [95% CI 28.4–38.0]); appendix p 43, supplementary figure 3).

At database lock, there were 436 deaths (ERd, 221/371; Rd, 215/371). The median overall survival was 60.4 months (95% CI 52.8–67.4) in the ERd group versus 57.6 months (95% CI 49.0–66.6) in the Rd group, with a HR of 0.99 (95% CI 0.82–1.19; appendix p 44, supplementary figure 4).

The time to disease progression, time to next treatment, and progression-free survival after next line of treatment showed no significant differences between treatment groups. Median time to disease progression was 42.0 months (95% CI 33.2–51.4) in the ERd group and 36.0 months (95% CI 31.3–45.4) in the Rd group (HR 0.85 [95% CI 0.69–1.05]; appendix p 45, supplementary figure 5). The median time to next treatment was 34.3 months (95% CI 29.8–39.6) in the ERd group and 29.2 months (95% CI 25.5–32.9) in the Rd group (HR 0.85 [95% CI 0.72–1.01]; appendix p 46, supplementary figure 6). The median progression-free survival after next line of treatment was 51.7 months (95% CI 45.5–57.1) in the ERd group and 43.5 months (95% CI 38.0–48.0) in the Rd group (HR 0.88 [95% CI 0.73–1.05]; appendix p 47, supplementary figure 7).

All 742 patients who received ≥ 1 dose of study therapy were included in the safety analysis. The most frequent adverse events and those of special interest are shown in table 3. All additional adverse events of grade 3, 4, or 5 severity are listed in the appendix (pp 18–38, supplementary table 2).

The most common any-grade non-haematological adverse events included diarrhoea (195 [53%] of 371 patients in the ERd group vs 181 [49%] of 371 patients in the Rd group), fatigue (182 [49%] vs 187 [50%]) and peripheral oedema (162 [44%] vs 181 [49%]). Any-grade hyperglycaemia occurred in 121 (33%) of patients in the ERd group and 69 (19%) in the Rd group; grade 3–4 hyperglycaemia was reported in 58 (16%) vs 37 (10%) patients, respectively. Grade 3–4 cardiac disorders were reported in 45 (12%) patients in the ERd group vs 31 (8%) in the Rd group. The most common any-grade haematological adverse events were anaemia (ERd, 152 [41%] vs Rd, 163 [44%]) and neutropenia (94 [25%] vs 118 [32%]). In the ERd group, 64 (17%) patients had grade 3–4 neutropenia, compared with 79 (21%) patients in the Rd group. Additionally, grade 3–4 lymphopenia was reported in 15 (4%) and 5 (1%) patients in the ERd and Rd groups, respectively.

Infections were reported in 294 (79%) patients in the ERd group versus 272 (73%) in the Rd group; rates were similar after adjustment for drug exposure (129.6 and 128.9 events per 100 patient-years for ERd and Rd, respectively). Median (range) time to onset of first infection was 4.0 (0.0–75.3) months in the ERd group (n=294) and 3.6 (0.0–85.2) months in the Rd group (n=272).

Infusion reactions occurred in 57 (15%) of all treated patients in the ERd group and were predominantly grade 1 (24 [6%]) or grade 2 (30 [8%]); three patients (1%) receiving elotuzumab had a grade 3 reaction and no grade 4–5 reactions were reported. The majority of infusion reactions (47 [82%]) occurred with the first elotuzumab dose. Second primary malignancies were reported in 42 (11%) patients in the ERd group versus 36 (10%) in the Rd group; these were predominantly basal cell carcinomas (ERd, 12 [3%] patients vs Rd, 10 [3%] patients).

Adverse events leading to discontinuation occurred in 199 (54%) patients in the ERd group and 172 (46%) in the Rd group. The most common any-grade adverse events leading to discontinuation of any study drug were pneumonia (14 [4%] patients in the ERd group vs 8 [2%] in the Rd group), sepsis (9 [2%] vs 1 [$<1\%$]), fatigue (14 [4%] vs 12 [3%]), acute kidney injury (7 [2%] vs 7 [2%]), diarrhoea (6 [2%] vs 4 [1%]), and dyspnoea (6 [2%] vs 1 [$<1\%$]).

Serious adverse events (any grade) were reported in 292 (79%) patients receiving ERd and 277 (75%) receiving Rd, most frequently pneumonia in both groups (60 [16%] and 48 [13%] patients, respectively; appendix p 39, supplementary table 3). In total, 221 (60%) patients from the ERd group and 215 (58%) from the Rd group died, most commonly due to disease progression (n= 80 [22%] vs n=106 [29%], respectively; appendix p 40, supplementary table 4). Study drug toxicity was the reported cause of death in five (1%) patients treated with ERd and four (1%) treated with Rd.

In both ERd and Rd groups, there were no noticeable changes in the mean pain severity and pain interference scores from baseline throughout treatment (appendix p 48, supplementary figure 8).

Discussion

In this randomised, controlled, open-label, phase 3 study, ERd did not demonstrate a statistically significant improvement in progression-free survival compared with Rd for the treatment of patients with newly diagnosed multiple myeloma who are ineligible for stem cell transplantation. Overall response rates were similar between treatment groups and approximately half of all patients in both groups achieved a very good partial response or better. There were no differences in overall survival. The safety profile of ERd was consistent with the known profile of elotuzumab in combination with immunomodulatory drugs.¹⁷⁻²⁰

The median duration of treatment was longer in the ERd group versus the Rd group; however, this difference did not translate into a progression-free survival advantage for patients in the ERd group. Nonetheless, in ELOQUENT-1, median progression-free survival for Rd (29·5 months) was similar to that from the MAIA (31·9 months) and SWOG S0777 (30·0 months) trials in similar disease settings, although cross-study comparisons should be interpreted with caution.^{8,11,12} Further, while disease progression was the main factor for treatment discontinuation in patients treated with Rd compared to ERd (38% vs 31%, respectively), adverse events were reported as a reason for treatment discontinuation at a higher rate with ERd versus Rd (42% vs 35%, respectively), despite ERd being a well-tolerated regimen. The exploratory endpoints of time to progression, time to next treatment, and progression-free survival after next line of treatment were numerically higher in patients treated with ERd versus Rd, but the differences between groups were not statistically significant.

Treatment with ERd was well tolerated and no new safety signals were identified beyond those reported in other studies of ERd or in ELOQUENT-3 in patients with relapsed or refractory multiple myeloma, where elotuzumab was combined with pomalidomide and dexamethasone (EPd).^{17,24} The higher rates of hyperglycaemia and lower rates of neutropenia in the ERd versus Rd group may reflect the oral dexamethasone dose given up to 24 h prior to elotuzumab infusion.

The clinical benefit of elotuzumab combined with an immunomodulatory drug was demonstrated in the relapsed/refractory setting on the basis of results from ELOQUENT-2 and ELOQUENT-3, in which ERd and EPd showed a 30% and 46% reduction in the risk of disease progression or death, respectively, versus control.^{17,24} The efficacy of ERd in newly diagnosed, transplant ineligible multiple myeloma has previously

been shown in a randomised study of 82 patients in Japan, in which the observed investigator-assessed overall response rate based on International Myeloma Working Group criteria was 88% with a minimum follow-up of 6 months²⁵ and 93% with a minimum follow-up of 2.5 years²⁶ in the ERd group, and the observed overall response rate was 74% in the Rd group. The progression-free survival data in the Japanese study are not available. It is unclear why the efficacy of elotuzumab was not replicated in the newly diagnosed setting in ELOQUENT-1, but this has been previously observed with other regimens with activity in the relapsed/refractory setting. Carfilzomib plus Rd (KRd) is approved to treat relapsed/refractory disease; however, in ENDURANCE, the co-primary endpoint of improved progression-free survival with KRd versus bortezomib plus Rd (VRd) was not met and, in CLARION, carfilzomib plus melphalan and prednisone did not significantly improve progression-free survival compared with bortezomib plus melphalan and prednisone.^{27,28} Similarly, ixazomib plus Rd (IRd) significantly improved progression-free survival versus placebo plus Rd in the relapsed/refractory setting,²⁹ but not in newly diagnosed patients in TOURMALINE-MM2.³⁰ However, results from TOURMALINE-MM2 may be explained by the lower doses of ixazomib and lenalidomide that were received after 18 cycles and reflected by the median progression-free survival in the control arm.³¹ The negative results from first-line trials of ERd, carfilzomib-based studies (including KRd), and IRd studies may reflect the broader difficulty of demonstrating treatment superiority in the newly diagnosed setting, possibly due to differences in disease biology, likely higher clinical burden of disease, and the larger differences in outcomes needed to demonstrate a treatment effect. Conversely, both the SWOG S0777 and MAIA studies have demonstrated significantly improved progression-free survival with VRd and DRd, respectively, versus Rd.^{11,12} Differences in the mechanism of action of these agents may account for the enhanced efficacy and/or synergy of these regimens compared with other Rd combinations.

This study has some limitations. First, the dosing regimen/study schedule, including the frequency of safety assessments and follow-up may have been burdensome and inconvenient to patients, particularly to those in the Rd arm. Continuous treatment with Rd was a standard of care for this patient population; therefore, the commercial availability of Rd may have enabled patients in the Rd group to discontinue treatment before confirmed progression and may have contributed to the shorter treatment duration of Rd versus ERd. Second, as dexamethasone dose adjustment by age was not established when ELOQUENT-1 was designed, dexamethasone was given at the same dose (40 mg weekly) regardless of age. Lack of dexamethasone dose adjustment by age may also have contributed to the high discontinuation rate due to adverse events in both treatment groups. Third, due to the high rate of treatment discontinuation before confirmed progression, the follow-up time for assessment of progression-free survival was twice as long as planned. Fourth, at the time of the study setup, the central laboratory contracted to perform fluorescence in situ hybridization cytogenetic analyses did not have capabilities to perform enrichment for CD38+ plasma cells. Therefore, the frequencies of the various cytogenetic abnormalities reported in the study are likely diluted, and this may be reflected in the lower rates of International Myeloma Working Group high-risk category. Finally, a high percentage of patients were censored for the primary progression-free survival analysis; however, additional sensitivity analyses with different censoring approaches did not seem to affect the progression-free survival comparison.

Although effective in the relapsed/refractory multiple myeloma setting, data from ELOQUENT-1 did not demonstrate a similar progression-free survival benefit in the newly diagnosed setting. The reasons for this are unknown and likely multifactorial.

Contributors

MAD, PGR, SL, and KW contributed to the conception and design of the study.

MAD, PGR, NJB, SG, MC, MB, WL, AML, HG, AB, HM, AL, JPL, MTP, DR, DW, M-VM, IS, ML, JB, JLK, SL, and KW contributed to data acquisition, including enrolling and treating patients. MAD, PGR, Y-MJ, AG, MPM, SL, and KW analysed the data. All authors interpreted the data, contributed to the development of the manuscript, and approved the final version for publication.

Declaration of interests

MAD has received personal fees (honoraria) from Amgen, Bristol Myers Squibb, BeiGene, Janssen, and Takeda (served on advisory boards for all), all outside the submitted work.

PGR has received personal fees from AstraZeneca, Bristol Myers Squibb, Celgene, GlaxoSmithKline, Janssen, Karyopharm, Oncopeptides, Protocol Intelligence, Regeneron, Sanofi, Secura Bio, and Takeda; and grant funding from Bristol Myers Squibb, Celgene, Karyopharm, Oncopeptides, and Takeda, all outside the submitted work.

NJB has received personal fees from AbbVie, Amgen, Bristol Myers Squibb, Celgene, Genentech, GlaxoSmithKline, Janssen, Karyopharm, Pfizer, and Sanofi; and grant funding from Celgene, all outside the submitted work.

SG has no conflicts of interest to declare.

MC has received personal fees from AbbVie, Amgen, Bristol Myers Squibb, Celgene, Janssen, Sanofi, and Takeda; and speaker's bureau from Celgene and Janssen, all outside the submitted work.

MB has served on speaker's bureau for Amgen, Celgene, Janssen, Oncopeptides, Sanofi, and Takeda; and on advisory boards for Amgen, Celgene, Janssen, Sanofi, and Takeda, all outside the submitted work.

WL has no conflicts of interest to declare.

AML has received grant funding, personal fees, and non-financial support from Bristol Myers Squibb, all for the work under consideration for publication. In addition, she has received grant funding from AbbVie, Archigen, BeiGene, Celgene, FibroGen, GlaxoSmithKline, Janssen, Karyopharm, Novartis, MorphoSys, Onconova, Oncopeptides, Pfizer, Roche, Sanofi, Servier, Takeda, and Verastem; personal fees from AbbVie, Celgene, Incyte, Janssen, Novartis, and Servier; and non-financial support from AbbVie, Janssen, Novartis, Roche, Sanofi, Takeda, and Verastem, all outside the submitted work.

HG has received grant funding and/or provision of investigational medicinal products from Amgen, Bristol Myers Squibb, Celgene, Chugai, the Dietmar Hopp Foundation, Janssen, Johns Hopkins University, and Sanofi; research support from Amgen, BMS, Celgene, Chugai, Janssen, Incyte, Molecular Partners, Merck Sharp & Dohme, Mundipharma GmbH, Novartis, Sanofi, and Takeda; has served on advisory boards for Adaptive Biotechnology, Amgen, Bristol Myers Squibb, Celgene, Janssen, Sanofi, and Takeda; and received honoraria from Amgen, Bristol Myers Squibb, Celgene, Chugai, GlaxoSmithKline, Janssen, Novartis, and Sanofi, all outside the submitted work.

AB has no conflicts of interest to declare.

HM has no conflicts of interest to declare.

AL has received personal fees (honoraria) from Amgen, Bristol Myers Squibb, Celgene, Janssen, and GlaxoSmithKline; and personal fees for serving on advisory boards from Bristol Myers Squibb, Celgene, Janssen, and Takeda, all outside the submitted work.

JPL has no conflicts of interest to declare.

MTP has received personal fees (for both honoraria and advisory boards) from Amgen, Bristol Myers Squibb, Janssen-Cilag, Celgene, GlaxoSmithKline, Karyopharm (advisory board only), Roche (advisory board only), Sanofi and Takeda; and travel support from Amgen, Bristol Myers Squibb, Janssen-Cilag, Celgene, Sanofi and Takeda, all outside the submitted work.

DR has no conflicts of interest to declare.

DW has received personal fees (honoraria) from Amgen, Antengene, Bristol Myers Squibb, Janssen, Karyopharm, Sanofi, and Takeda, all outside the submitted work.

M-VM has received personal fees (for both honoraria and advisory boards) from AbbVie, Adaptive, Amgen, bluebird bio, Celgene, GlaxoSmithKline, Janssen, Oncopeptides, Pfizer, Regeneron, Roche, Sanofi, Seagen, and Takeda, all outside the submitted work.

IS has received personal fees from Amgen, Bristol Myers Squibb, Celgene, GlaxoSmithKline, Janssen-Cilag, Sanofi, and Takeda; and non-financial support from Amgen, Bristol Myers Squibb, Celgene, Janssen-Cilag, Novartis, Sanofi, and Takeda, all outside the submitted work.

ML has no conflicts of interest to declare.

JB has received research funding from AbbVie, Acetylon, Amgen, bluebird bio, Bristol Myers Squibb, Celgene, Celularity, CRISPR Therapeutics, EMD Serono, Genentech, GlaxoSmithKline, Ichnos Sciences, Incyte, Janssen, Lilly, Novartis, Poseida, Sanofi, Takeda, and Teva; and consultancy fees from bluebird bio, Bristol Myers Squibb, Celgene, CRISPR Therapeutics, Janssen, Kite Pharma, Legend Biotech, Secura Bio, Takeda, all outside the submitted work.

JLK has received grant funding from Bristol Myers Squibb, all for the work under consideration for publication. In addition, he has received grant funding from AbbVie, Bristol Myers Squibb, Celgene, Fortis

Therapeutics, Genentech, Janssen, Sanofi Genzyme, and Sutro Biopharma; and personal fees from AbbVie, Bristol Myers Squibb, Celgene, Genentech, Incyte, Janssen, Pharmacyclics, Sanofi Genzyme, Tecnofarma, and TG Therapeutics, all outside the submitted work.

AG is employee of Bristol Myers Squibb.

MPM is employee of Bristol Myers Squibb.

SL has received research support from Bristol Myers Squibb, Celgene, Janssen, and Takeda; served on advisory boards for AbbVie, Bristol Myers Squibb, Celgene, GlaxoSmithKline, Janssen, Karyopharm, Novartis, and Takeda; and served as a member of the board of directors for TG therapeutics, all outside the submitted work.

KW has received grant funding from Celgene, all for the work under consideration for publication. In addition, she has received grant funding from Amgen, Celgene, Janssen, and Sanofi; and personal fees from AbbVie, Amgen, Adaptive Biotech, Celgene, GlaxoSmithKline, Janssen, Karyopharm, Oncopeptides, Roche, Sanofi, and Takeda; and non-financial support from Amgen, Bristol Myers Squibb, Celgene, GlaxoSmithKline, Janssen, Sanofi, and Takeda, all outside the submitted work.

Data sharing

Bristol Myers Squibb policy on data sharing may be found at <https://www.bms.com/researchers-and-partners/clinical-trials-and-research/disclosure-commitment.html>.

Acknowledgments

This study was supported by Bristol Myers Squibb (Princeton, NJ, USA).

We thank the patients and families for making this trial possible, and clinical study teams who participated in the trial. Simon Wigfield PhD, and Jane Cheung PhD, of Caudex (funded by Bristol Myers Squibb), provided writing assistance for the development of this manuscript. Editorial assistance was also provided by Caudex (funding from Bristol Myers Squibb).

The National Institute of Health (NIH) was not involved in funding this study. None of the authors were employed by the NIH and none received an NIH grant.

References

[1] Kumar SK, Lee JH, Lahuerta JJ, et al. Risk of progression and survival in multiple myeloma relapsing after therapy with IMiDs and bortezomib: a multicenter international myeloma working group study. *Leukemia* 2012; **26**: 149-57.

- [2] Kumar SK, Dimopoulos MA, Kastritis E, et al. Natural history of relapsed myeloma, refractory to immunomodulatory drugs and proteasome inhibitors: a multicenter IMWG study. *Leukemia* 2017; **31**: 2443-8.
- [3] Yong K, Delforge M, Driessen C, et al. Multiple myeloma: patient outcomes in real-world practice. *Br J Haematol* 2016; **175**: 252-64.
- [4] Usmani S, Ahmadi T, Ng Y, et al. Analysis of real-world data on overall survival in multiple myeloma patients with ≥ 3 prior lines of therapy including a proteasome inhibitor (PI) and an immunomodulatory drug (IMiD), or double refractory to a PI and an IMiD. *Oncologist* 2016; **21**: 1355-61.
- [5] Kumar SK, Therneau TM, Gertz MA, et al. Clinical course of patients with relapsed multiple myeloma. *Mayo Clin Proc* 2004; **79**: 867-74.
- [6] Kumar SK, Dispenzieri A, Lacy MQ, et al. Continued improvement in survival in multiple myeloma: changes in early mortality and outcomes in older patients. *Leukemia* 2014; **28**: 1122-8.
- [7] Benboubker L, Dimopoulos MA, Dispenzieri A, et al. Lenalidomide and dexamethasone in transplant-ineligible patients with myeloma. *N Engl J Med* 2014; **371**: 906-17.
- [8] Facon T, Dimopoulos MA, Dispenzieri A, et al. Final analysis of survival outcomes in the phase 3 FIRST trial of up-front treatment for multiple myeloma. *Blood* 2018; **131**: 301-10.
- [9] Giri S, Aryal MR, Yu H, et al. Efficacy and safety of frontline regimens for older transplant-ineligible patients with multiple myeloma: A systematic review and meta-analysis. *J Geriatr Oncol* 2020; **11**: 1285-92.
- [10] National Comprehensive Cancer Network. Clinical Practice Guidelines in Oncology. Multiple Myeloma. Version 3.2021.2021. https://www.nccn.org/professionals/physician_gls/pdf/myeloma.pdf. (accessed November 26, 2020).
- [11] Durie BG, Hoering A, Abidi MH, et al. Bortezomib with lenalidomide and dexamethasone versus lenalidomide and dexamethasone alone in patients with newly diagnosed myeloma without intent for immediate autologous stem-cell transplant (SWOG S0777): a randomised, open-label, phase 3 trial. *Lancet* 2017; **389**: 519-27.
- [12] Facon T, Kumar S, Plesner T, et al. Daratumumab plus lenalidomide and dexamethasone for untreated myeloma. *N Engl J Med* 2019; **380**: 2104-15.
- [13] Hsi ED, Steinle R, Balasa B, et al. CS1, a potential new therapeutic antibody target for the treatment of multiple myeloma. *Clin Cancer Res* 2008; **14**: 2775-84.
- [14] Tai YT, Dillon M, Song W, et al. Anti-CS1 humanized monoclonal antibody HuLuc63 inhibits myeloma cell adhesion and induces antibody-dependent cellular cytotoxicity in the bone marrow milieu. *Blood* 2008; **112**: 1329-37.
- [15] Collins SM, Bakan CE, Swartzel GD, et al. Elotuzumab directly enhances NK cell cytotoxicity against myeloma via CS1 ligation: evidence for augmented NK cell function complementing ADCC. *Cancer Immunol Immunother* 2013; **62**: 1841-9.
- [16] Kurdi AT, Glavey SV, Bezman NA, et al. Antibody-dependent cellular phagocytosis by macrophages is a novel mechanism of action of elotuzumab. *Mol Cancer Ther* 2018; **17**: 1454-63.

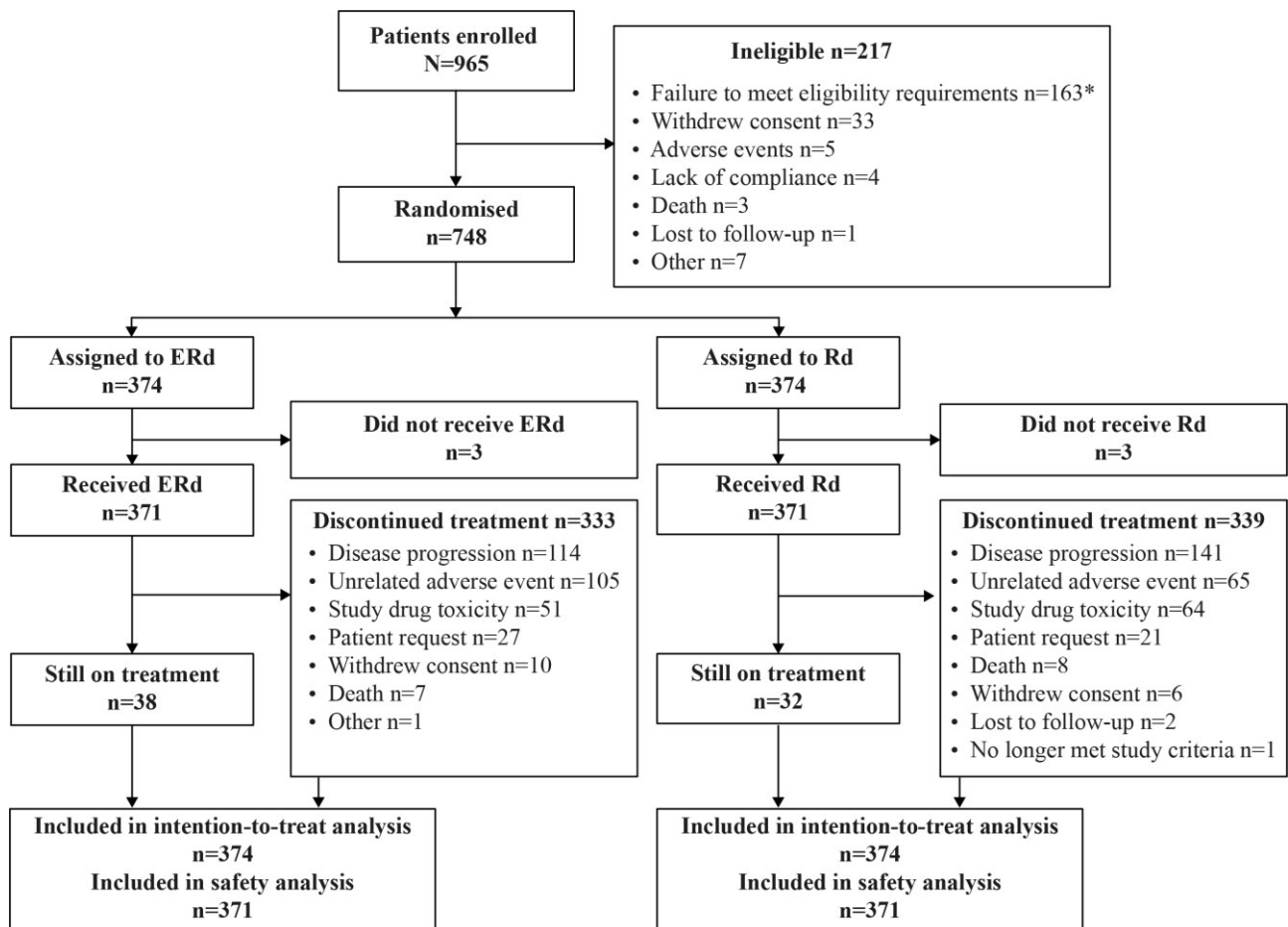
- [17] Lonial S, Dimopoulos M, Palumbo A, et al. Elotuzumab therapy for relapsed or refractory multiple myeloma. *N Engl J Med* 2015; **373**: 621-31.
- [18] Dimopoulos MA, Lonial S, White D, et al. Elotuzumab plus lenalidomide/dexamethasone for relapsed or refractory multiple myeloma: ELOQUENT-2 follow-up and post-hoc analyses on progression-free survival and tumour growth. *Br J Haematol* 2017; **178**: 896-905.
- [19] Dimopoulos MA, Lonial S, White D, et al. Elotuzumab, lenalidomide, and dexamethasone in RRMM: final overall survival results from the phase 3 randomized ELOQUENT-2 study. *Blood Cancer J* 2020; **10**: 91.
- [20] Dimopoulos MA, Lonial S, Betts KA, et al. Elotuzumab plus lenalidomide and dexamethasone in relapsed/refractory multiple myeloma: extended 4-year follow-up and analysis of relative progression-free survival from the randomized ELOQUENT-2 trial. *Cancer* 2018; **124**: 4032-43.
- [21] Bladé J, Samson D, Reece D, et al. Criteria for evaluating disease response and progression in patients with multiple myeloma treated by high-dose therapy and haemopoietic stem cell transplantation. Myeloma Subcommittee of the EBMT. European Group for Blood and Marrow Transplant. *Br J Haematol* 1998; **102**: 1115-23.
- [22] Durie BG, Harousseau JL, Miguel JS, et al. International uniform response criteria for multiple myeloma. *Leukemia* 2006; **20**: 1467-73.
- [23] Chng WJ, Dispenzieri A, Chim CS, et al. IMWG consensus on risk stratification in multiple myeloma. *Leukemia* 2014; **28**: 269-77.
- [24] Dimopoulos MA, Dytveld D, Grosicki S, et al. Elotuzumab plus pomalidomide and dexamethasone for multiple myeloma. *N Engl J Med* 2018; **379**: 1811-22.
- [25] Kubo K, Hori M, Ohta K, et al. Elotuzumab plus lenalidomide and dexamethasone for newly diagnosed multiple myeloma: a randomized, open-label, phase 2 study in Japan. *Int J Hematol* 2020; **111**: 65-74.
- [26] Ohta K, Hori M, Handa H, et al. Elotuzumab plus lenalidomide/dexamethasone for newly diagnosed multiple myeloma: follow-up of efficacy/safety and soluble SLAMF7 analysis in Japanese patients. 81st Annual Meeting of the Japanese Society of Hematology. 2019.
- [27] Kumar SK, Jacobus SJ, Cohen AD, et al. Carfilzomib or bortezomib in combination with lenalidomide and dexamethasone for patients with newly diagnosed multiple myeloma without intention for immediate autologous stem-cell transplantation (ENDURANCE): a multicentre, open-label, phase 3, randomised, controlled trial. *Lancet Oncol* 2020; **21**: 1317-30.
- [28] Facon T, Lee JH, Moreau P, et al. Carfilzomib or bortezomib with melphalan-prednisone for transplant-ineligible patients with newly diagnosed multiple myeloma. *Blood* 2019; **133**: 1953-63.
- [29] Moreau P, Masszi T, Grzasko N, et al. Oral ixazomib, lenalidomide, and dexamethasone for multiple myeloma. *N Engl J Med* 2016; **374**: 1621-34.
- [30] Facon T, Venner CP, Bahlis NJ, et al. Oral ixazomib, lenalidomide, and dexamethasone for newly diagnosed transplant-ineligible multiple myeloma patients. *Blood* 2021.
- [31] Facon T, Venner CP, Bahlis N, et al. The phase 3 TOURMALINE-MM2 trial: Oral ixazomib, lenalidomide, and dexamethasone (IRd) vs placebo-Rd for transplant-ineligible patients with newly

diagnosed multiple myeloma (NDMM). 62nd American Society of Hematology (ASH) Annual Meeting and Exposition; December 5–8, 2020. 2020.

Tables

See accompanying file for Tables.

Figure 1: Trial profile

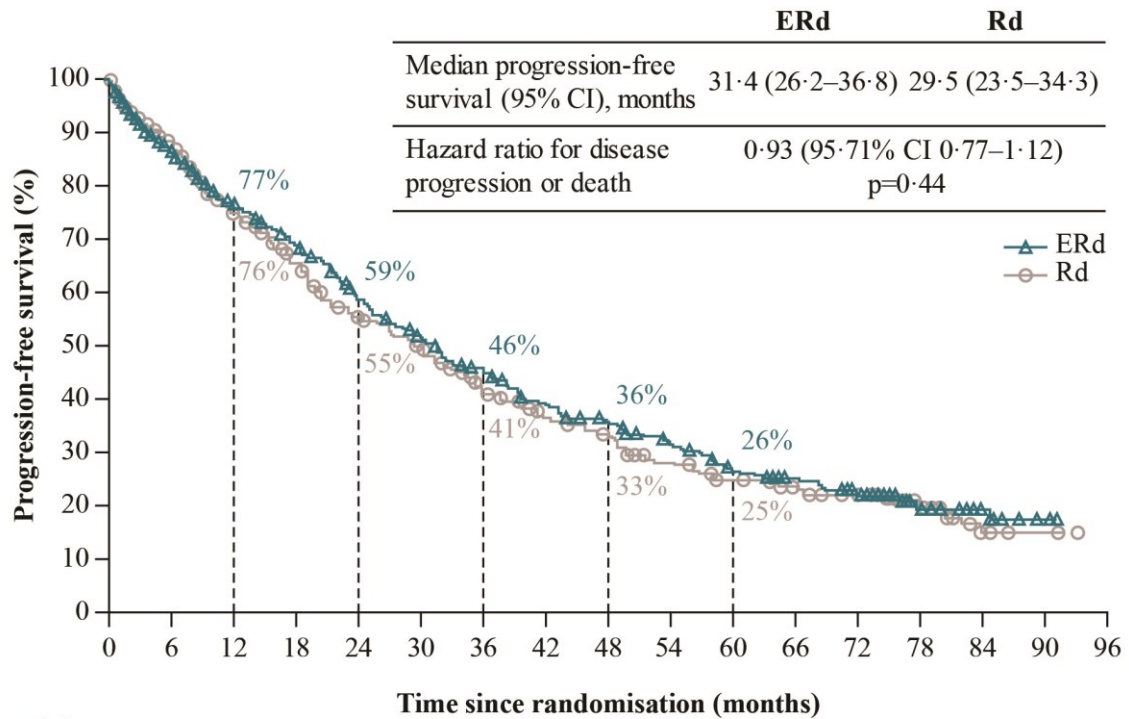


ECOG= Eastern Cooperative Oncology Group. ERd=elotuzumab, lenalidomide, and dexamethasone. Rd=lenalidomide and dexamethasone.

*The reasons for patients failing to meet eligibility requirements are as follows: did not meet criteria of having newly diagnosed, untreated, symptomatic, measurable myeloma and ineligibility for high-dose therapy plus SCT (n=72); did not meet protocol thresholds for creatinine clearance (n=22), neutrophil count, platelet count, or haemoglobin level (n=10), or alanine or aspartate aminotransferase level (n=2); significant cardiac disease, uncontrolled diabetes, HIV or hepatitis A–C infection, or any medical conditions that would impose excessive risk (n=22); prior or concurrent malignancy (n=12); not willing to comply with protocol requirements (n=3); ECOG performance status >2 (n=2); age (n=1); began treatment earlier than planned due to aggressive myeloma (n=1); unable to tolerate thromboembolic prophylaxis (n=1); unable to obtain bone marrow aspirate (n=1); inadvertently took dose of study drug (excluded by medical monitor, n=1); did not meet eligibility criteria for other reason (n=13).

Figure 2: Progression-free survival

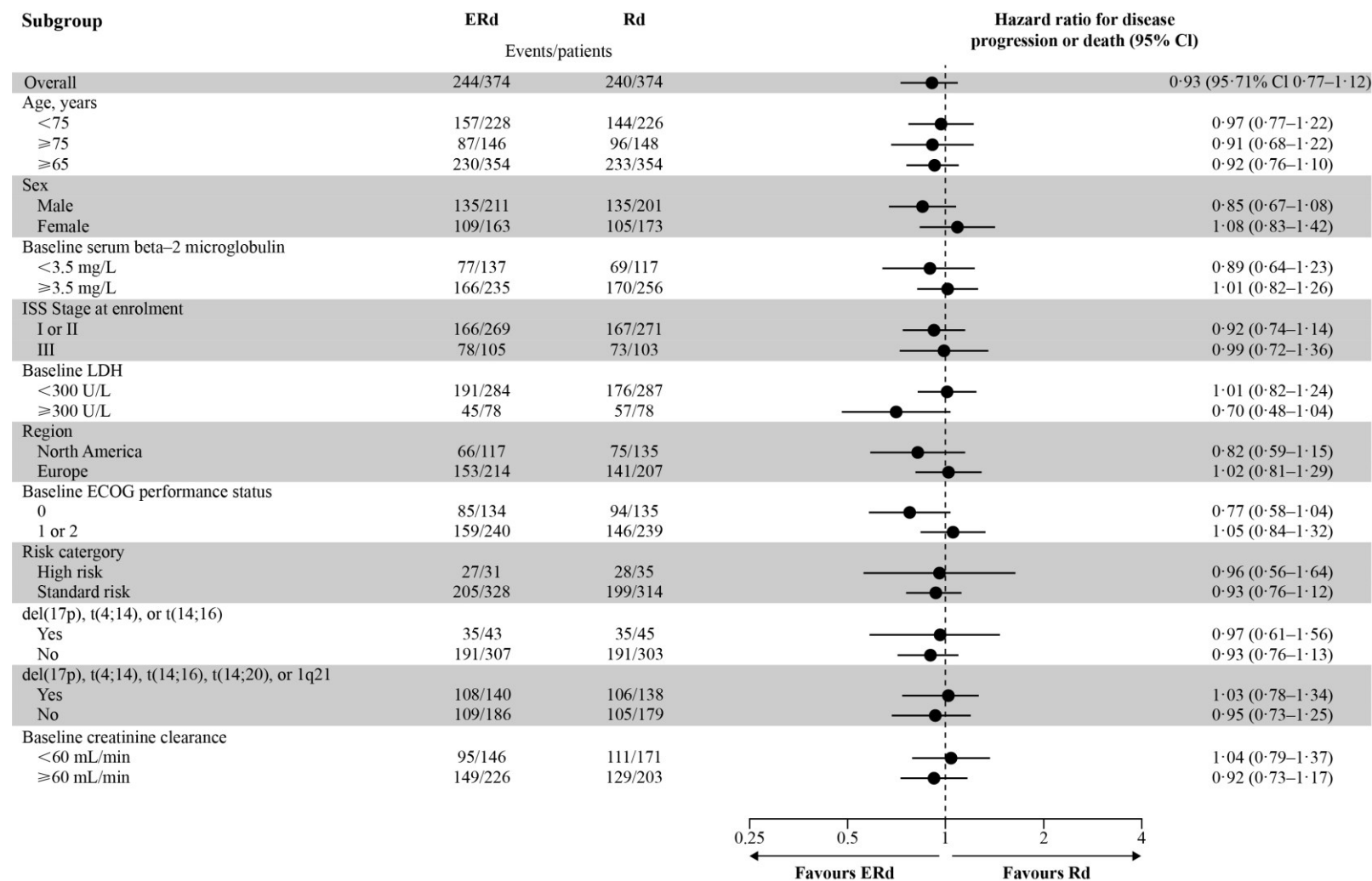
(A) Kaplan–Meier plot of progression-free survival at final analysis in all randomised patients



Number at risk
(number censored)

| | | | | | | | | | | | | | | | | | |
|-----|-----|------|------|------|------|------|------|------|------|------|------|------|------|-------|-------|-------|-------|
| ERd | 374 | 294 | 252 | 222 | 186 | 158 | 133 | 109 | 97 | 78 | 61 | 54 | 41 | 21 | 11 | 4 | 0 |
| | (0) | (31) | (41) | (45) | (50) | (56) | (63) | (67) | (71) | (78) | (83) | (87) | (94) | (110) | (120) | (126) | (130) |
| Rd | 374 | 296 | 242 | 193 | 160 | 142 | 112 | 96 | 85 | 69 | 58 | 50 | 42 | 30 | 8 | 3 | 0 |
| | (0) | (37) | (51) | (64) | (69) | (71) | (77) | (81) | (83) | (86) | (89) | (94) | (98) | (109) | (126) | (131) | (34) |

(B) Subgroup analysis of progression-free survival



Symbols represent censored observations in panel A.

CI=confidence interval. ECOG=Eastern Cooperative Oncology Group. ERd=elotuzumab, lenalidomide and dexamethasone. ISS=International Staging System. LDH=lactate dehydrogenase. Rd=lenalidomide and dexamethasone.

Tables

Table 1: Baseline characteristics and demographics

| | Elotuzumab, lenalidomide, and dexamethasone group (n=374) | Lenalidomide and dexamethasone group (n=374) |
|-------------------------------------------|-----------------------------------------------------------------|-------------------------------------------------|
| Age, years | 73.0 (47.0–95.0) | 73.0 (46.0–92.0) |
| <65 | 20 (5%) | 20 (5%) |
| ≥65 to <75 | 208 (56%) | 206 (55%) |
| ≥75 | 146 (39%) | 148 (40%) |
| Sex | | |
| Male | 211 (56%) | 201 (54%) |
| Female | 163 (44%) | 173 (46%) |
| Race* | | |
| White | 360 (96%) | 351 (94%) |
| Black or African American | 13 (3%) | 16 (4%) |
| Asian | 1 (<1%) | 4 (1%) |
| Native Hawaiian or other Pacific Islander | 0 | 1 (<1%) |
| ECOG performance status | | |
| 0 | 134 (36%) | 135 (36%) |
| 1 | 196 (52%) | 172 (46%) |
| 2 | 44 (12%) | 67 (18%) |
| ISS stage | | |
| Stage I | 114 (31%) | 101 (27%) |
| Stage II | 155 (41%) | 170 (46%) |
| Stage III | 105 (28%) | 103 (28%) |
| Lactate dehydrogenase (U/L) | | |
| <300 | 284 (76%) | 287 (77%) |
| ≥300 | 78 (21%) | 78 (21%) |
| Not reported | 12 (3%) | 9 (2%) |
| Lytic bone lesions | | |
| 0 | 122 (33%) | 116 (31%) |
| 1–3 | 51 (14%) | 69 (18%) |
| ≥3 | 196 (52%) | 184 (49%) |
| Not reported | 5 (1%) | 5 (1%) |

| | | |
|-------------------------------|-----------|-----------|
| Risk category [†] | | |
| High risk | 31 (8%) | 35 (9%) |
| Low risk | 1 (<1%) | 3 (1%) |
| Standard risk | 328 (88%) | 314 (84%) |
| Not evaluable | 14 (4%) | 22 (6%) |
| del(17p) [‡] | | |
| Yes | 12 (3%) | 20 (5%) |
| No | 343 (92%) | 333 (89%) |
| Not reported | 19 (5%) | 21 (6%) |
| t(4;14) [‡] | | |
| Yes | 26 (7%) | 23 (6%) |
| No | 335 (90%) | 326 (87%) |
| Not reported | 13 (4%) | 25 (7%) |
| 1q21 [‡] | | |
| Yes | 122 (33%) | 115 (31%) |
| No | 242 (65%) | 241 (64%) |
| Not reported | 10 (3%) | 18 (5%) |
| Creatinine clearance (mL/min) | | |
| <60 | 146 (39%) | 171 (46%) |
| ≥60 | 226 (60%) | 203 (54%) |
| Not reported | 2 (1%) | 0 |
| Plasmacytoma | | |
| Yes | 37 (10%) | 42 (11%) |
| No | 218 (58%) | 212 (57%) |
| Not reported/unknown | 119 (32%) | 120 (32%) |

Data are median (range) or n (%).

*In the lenalidomide and dexamethasone group, one patient's race was reported as "other" and one patient's race was not reported. [†]High risk: ISS stage II or III and t(4;14) or del(17p) abnormality. Low risk: ISS stage I or II and absence of t(4;14), del(17p), and 1q21 abnormalities and age <55 years. Standard risk: any patients not meeting the definition of high or low risk. Not evaluable: Patients having missing data preventing the classification in the other three categories. Definition of risk based on International Myeloma Working Group consensus criteria.²³

[‡]Positive score for each abnormality tested was assigned based on identifying at least one abnormal cell out of the cells examined for all aberrations except del(17p) where a 7.5% cut-off was applied. Fluorescence in situ hybridisation was performed without CD138+ enrichment.

ECOG=Eastern Cooperative Oncology Group. ISS=International Staging System.

Table 2: Overall response rate and best overall response per IRC in all randomised patients

| | Elotuzumab, lenalidomide, and dexamethasone group (n=374) | Lenalidomide and dexamethasone group (n=374) |
|--------------------------------------|--------------------------------------------------------------|-------------------------------------------------|
| Overall response rate ^{*,†} | 310 (83%) | 297 (79%) |
| 95% CI | 78.7–86.6 | 75.0–83.4 |
| Odds ratio (95% CI) [‡] | | 1.26 (0.87–1.82) |
| Best overall response | | |
| Stringent complete response | 32 (9%) | 32 (9%) |
| Complete response | 35 (9%) | 38 (10%) |
| Very good partial response | 130 (35%) | 114 (31%) |
| Partial response | 113 (30%) | 113 (30%) |
| Minimal response | 16 (4%) | 31 (8%) |
| Stable disease | 19 (5%) | 19 (5%) |
| Progressive disease | 6 (2%) | 6 (2%) |
| Could not be determined/not reported | 23 (6%) | 21 (6%) |

Data are n (%) unless indicated otherwise.

^{*}sCR + CR + VGPR + PR. CI is based on the Clopper and Pearson method. [†]Alpha for overall response rate is 0.05.

[‡]Stratified by ISS stage (I–II vs III), age (<75 years old vs ≥75 years old), and ECOG performance status (0 vs 1–2) at randomization. Common odds ratio calculated using the Cochran–Mantel–Haenszel method for the ratio of ERd to Rd. CI=confidence interval. CR=complete response. ECOG=Eastern Cooperative Oncology Group. ERd=elotuzumab, lenalidomide, and dexamethasone. IRC=independent review committee. ISS=International Staging System. PR=partial response. Rd=lenalidomide and dexamethasone. sCR=stringent CR. VGPR=very good partial response.

Table 3: Summary of adverse events in all treated patients

| | Elotuzumab, lenalidomide, and dexamethasone group (n=371) | | | | Lenalidomide and dexamethasone group (n=371) | | | |
|-----------------------------------|--------------------------------------------------------------|-----------|----------|----------|-------------------------------------------------|-----------|----------|----------|
| | Grade 1–2 | Grade 3 | Grade 4 | Grade 5 | Grade 1–2 | Grade 3 | Grade 4 | Grade 5 |
| Any adverse event | 32 (9%) | 174 (47%) | 78 (21%) | 86 (23%) | 30 (8%) | 203 (55%) | 82 (22%) | 55 (15%) |
| Non-haematological adverse events | | | | | | | | |
| Diarrhoea | 163 (44%) | 31 (8%) | 1 (<1%) | 0 | 160 (43%) | 21 (6%) | 0 | 0 |
| Peripheral oedema | 154 (42%) | 8 (2%) | 0 | 0 | 165 (44%) | 16 (4%) | 0 | 0 |
| Constipation | 138 (37%) | 5 (1%) | 0 | 0 | 140 (38%) | 5 (1%) | 0 | 0 |
| Fatigue | 137 (37%) | 42 (11%) | 3 (1%) | 0 | 145 (39%) | 41 (11%) | 1 (<1%) | 0 |
| Cough | 116 (31%) | 3 (1%) | 0 | 0 | 101 (27%) | 5 (1%) | 0 | 0 |
| Nausea | 114 (31%) | 3 (1%) | 0 | 0 | 104 (28%) | 4 (1%) | 0 | 0 |
| Back pain | 110 (30%) | 26 (7%) | 2 (1%) | 0 | 118 (32%) | 18 (5%) | 0 | 0 |
| Pyrexia | 110 (30%) | 9 (2%) | 0 | 0 | 80 (22%) | 2 (1%) | 0 | 0 |
| Decreased appetite | 99 (27%) | 2 (1%) | 0 | 0 | 83 (22%) | 2 (1%) | 0 | 0 |
| Insomnia | 88 (24%) | 9 (2%) | 1 (<1%) | 0 | 88 (24%) | 7 (2%) | 0 | 0 |
| Arthralgia | 88 (24%) | 7 (2%) | 0 | 0 | 90 (24%) | 12 (3%) | 0 | 0 |
| Rash | 88 (24%) | 3 (1%) | 0 | 0 | 76 (20%) | 12 (3%) | 0 | 0 |
| Muscle spasms | 79 (21%) | 5 (1%) | 0 | 0 | 83 (22%) | 0 | 0 | 0 |
| Dizziness | 75 (20%) | 8 (2%) | 1 (<1%) | 0 | 58 (16%) | 8 (2%) | 0 | 0 |
| Dyspnoea | 75 (20%) | 19 (5%) | 2 (1%) | 0 | 74 (20%) | 16 (4%) | 4 (1%) | 1 (<1%) |
| Upper respiratory tract infection | 74 (20%) | 8 (2%) | 0 | 0 | 81 (22%) | 2 (1%) | 0 | 1 (<1%) |
| Weight decreased | 74 (20%) | 3 (1%) | 0 | 0 | 62 (17%) | 4 (1%) | 0 | 0 |
| Pain in extremity | 71 (19%) | 3 (1%) | 1 (<1%) | 0 | 67 (18%) | 11 (3%) | 0 | 0 |
| Asthenia | 67 (18%) | 22 (6%) | 0 | 0 | 63 (17%) | 13 (4%) | 0 | 0 |
| Vomiting | 66 (18%) | 5 (1%) | 0 | 0 | 48 (13%) | 0 | 0 | 0 |
| Musculoskeletal pain | 66 (18%) | 4 (1%) | 0 | 0 | 61 (16%) | 4 (1%) | 0 | 0 |
| Hyperglycaemia | 63 (17%) | 51 (14%) | 7 (2%) | 0 | 32 (9%) | 33 (9%) | 4 (1%) | 0 |
| Hypotension | 62 (17%) | 4 (1%) | 0 | 0 | 41 (11%) | 4 (1%) | 0 | 1 (<1%) |
| Tremor | 60 (16%) | 1 (<1%) | 0 | 0 | 52 (14%) | 3 (1%) | 0 | 0 |
| Nasopharyngitis | 59 (16%) | 1 (<1%) | 0 | 0 | 62 (17%) | 0 | 0 | 0 |
| Headache | 59 (16%) | 2 (1%) | 0 | 0 | 47 (13%) | 2 (1%) | 0 | 0 |
| Bone pain | 55 (15%) | 4 (1%) | 1 (<1%) | 0 | 48 (13%) | 10 (3%) | 1 (<1%) | 0 |

| | Elotuzumab, lenalidomide, and dexamethasone group (n=371) | | | | Lenalidomide and dexamethasone group (n=371) | | | |
|-------------------------------|--------------------------------------------------------------|----------|---------|---------|-------------------------------------------------|-----------|---------|---------|
| | Grade 1–2 | Grade 3 | Grade 4 | Grade 5 | Grade 1–2 | Grade 3 | Grade 4 | Grade 5 |
| Peripheral sensory neuropathy | 52 (14%) | 5 (1%) | 0 | 0 | 56 (15%) | 3 (1%) | 0 | 0 |
| Blood creatinine increased | 49 (13%) | 5 (1%) | 1 (<1%) | 0 | 68 (18%) | 4 (1%) | 1 (<1%) | 0 |
| Hypokalaemia | 49 (13%) | 27 (7%) | 8 (2%) | 0 | 57 (15%) | 30 (8%) | 3 (1%) | 0 |
| Abdominal pain | 48 (13%) | 3 (1%) | 0 | 0 | 45 (12%) | 6 (2%) | 0 | 0 |
| Contusion | 47 (13%) | 0 | 0 | 0 | 53 (14%) | 0 | 0 | 0 |
| Urinary tract infection | 47 (13%) | 17 (5%) | 2 (1%) | 0 | 50 (13%) | 11 (3%) | 0 | 0 |
| Musculoskeletal chest pain | 47 (13%) | 2 (1%) | 0 | 0 | 47 (13%) | 1 (<1%) | 0 | 0 |
| Hypertension | 45 (12%) | 8 (2%) | 0 | 0 | 35 (9%) | 11 (3%) | 0 | 0 |
| Dysphonia | 44 (12%) | 1 (<1%) | 0 | 0 | 27 (7%) | 0 | 0 | 0 |
| Dyspepsia | 43 (12%) | 0 | 0 | 0 | 29 (8%) | 1 (<1%) | 0 | 0 |
| Hypocalcaemia | 42 (11%) | 14 (4%) | 18 (5%) | 0 | 57 (15%) | 11 (3%) | 10 (3%) | 0 |
| Anxiety | 41 (11%) | 3 (1%) | 0 | 0 | 25 (7%) | 3 (1%) | 0 | 0 |
| Respiratory tract infection | 40 (11%) | 2 (1%) | 1 (<1%) | 1 (<1%) | 32 (9%) | 2 (1%) | 0 | 0 |
| Influenza-like illness | 39 (11%) | 0 | 0 | 0 | 25 (7%) | 3 (1%) | 0 | 0 |
| Peripheral neuropathy | 39 (11%) | 3 (1%) | 0 | 0 | 41 (11%) | 7 (2%) | 0 | 0 |
| Pruritus | 39 (11%) | 1 (<1%) | 0 | 0 | 44 (12%) | 0 | 0 | 0 |
| Paraesthesia | 39 (11%) | 0 | 0 | 0 | 44 (12%) | 1 (<1%) | 0 | 0 |
| Depression | 38 (10%) | 5 (1%) | 0 | 0 | 27 (7%) | 4 (1%) | 0 | 0 |
| Bronchitis | 37 (10%) | 16 (4%) | 0 | 0 | 49 (13%) | 6 (2%) | 0 | 0 |
| Muscular weakness | 37 (10%) | 9 (2%) | 0 | 0 | 45 (12%) | 8 (2%) | 0 | 0 |
| Hypomagnesaemia | 36 (10%) | 6 (2%) | 0 | 0 | 21 (6%) | 1 (<1%) | 1 (<1%) | 0 |
| Confusional state | 36 (10%) | 3 (1%) | 1 (<1%) | 0 | 27 (7%) | 5 (1%) | 1 (<1%) | 0 |
| Pneumonia | 27 (7%) | 43 (12%) | 5 (1%) | 9 (2%) | 23 (6%) | 34 (9%) | 5 (1%) | 5 (1%) |
| Cataract | 26 (7%) | 42 (11%) | 0 | 0 | 29 (8%) | 29 (8%) | 0 | 0 |
| Atrial fibrillation | 21 (6%) | 17 (5%) | 2 (1%) | 1 (<1%) | 24 (6%) | 10 (3%) | 2 (1%) | 0 |
| Syncope | 4 (1%) | 17 (5%) | 0 | 0 | 8 (2%) | 16 (4%) | 0 | 0 |
| Acute kidney injury | 4 (1%) | 17 (5%) | 5 (1%) | 2 (1%) | 8 (2%) | 11 (3%) | 6 (2%) | 1 (<1%) |
| Haematological adverse events | 103 (28%) | 97 (26%) | 23 (6%) | 0 | 95 (26%) | 112 (30%) | 25 (7%) | 0 |
| Anaemia | 103 (28%) | 45 (12%) | 4 (1%) | 0 | 96 (26%) | 62 (17%) | 5 (1%) | 0 |
| Thrombocytopenia | 43 (12%) | 15 (4%) | 8 (2%) | 0 | 46 (12%) | 15 (4%) | 9 (2%) | 0 |
| Neutropenia | 30 (8%) | 57 (15%) | 7 (2%) | 0 | 39 (11%) | 65 (18%) | 14 (4%) | 0 |

| | Elotuzumab, lenalidomide, and dexamethasone group (n=371) | | | | Lenalidomide and dexamethasone group (n=371) | | | |
|------------------------------------|--------------------------------------------------------------|----------|---------|---------|-------------------------------------------------|----------|---------|---------|
| | Grade 1–2 | Grade 3 | Grade 4 | Grade 5 | Grade 1–2 | Grade 3 | Grade 4 | Grade 5 |
| Adverse events of special interest | | | | | | | | |
| Infections and infestations | 151 (41%) | 99 (27%) | 19 (5%) | 25 (7%) | 174 (47%) | 75 (20%) | 8 (2%) | 15 (4%) |
| Cardiac disorders | 76 (20%) | 33 (9%) | 12 (3%) | 19 (5%) | 59 (16%) | 25 (7%) | 6 (2%) | 12 (3%) |
| Secondary primary malignancy | | 42 (11%) | | | | 36 (10%) | | |

Data are n (%). Includes adverse events and serious adverse events reported between the first dose of study drug and 60 days after the last dose of study drug, regardless of causality. Grade 1–2 adverse events that were reported in at least 10% of patients in either treatment group and grade 3, 4, and 5 adverse events that were reported in at least 5% of patients in either treatment group are shown, with the exception of adverse events of special interest.