

AperTO - Archivio Istituzionale Open Access dell'Università di Torino

Does hypnotizability affect neurovascular coupling during cognitive tasks?

This is a pre print version of the following article:

Original Citation:

Availability:

This version is available <http://hdl.handle.net/2318/1884179> since 2022-12-28T23:01:03Z

Published version:

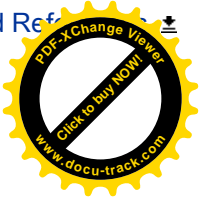
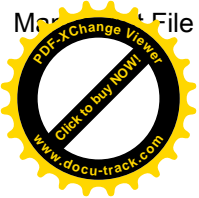
DOI:10.1016/j.physbeh.2022.113915

Terms of use:

Open Access

Anyone can freely access the full text of works made available as "Open Access". Works made available under a Creative Commons license can be used according to the terms and conditions of said license. Use of all other works requires consent of the right holder (author or publisher) if not exempted from copyright protection by the applicable law.

(Article begins on next page)



Differential Control of Blood Flow in Masseter and Biceps Brachii Muscles During Stress

Anas Rashid, Silvestro Roatta*

Lab of Integrative Physiology, Department of Neuroscience "Rita Levi Montalcini",
University of Turin, Turin, Italy

1
2
3
4
5
6
7
8
9
10
11
12
13
14
15
16
17
18
19
20
21
22
23
24
25
26
27
28
29
30
31
32
33
34
35
36
37
38
39
40
41
42
43
44
45
46
47
48
49
50
51
52
53
54
55
56
57
58
59
60
61
62
63
64
65

* Correspondence to: Silvestro Roatta, Lab of Integrative Physiology, Department of Neuroscience "Rita Levi Montalcini", University of Torino, Corso Raffaello 30, Torino (TO) – 10125, Italy.
E-mail address: silvestro.roatta@unito.it



ABSTRACT

1 *Objective:* Stress and sympathetic activity have been implicated in the development
2 of muscle pain, also in head and neck muscles. However, sympathetic outflow may
3 differentially affect different body areas, also depending on the type of stressor. To
4 compare sympathetic hemodynamic effects in masticatory and limb muscles in
5 response to different stressors.
6

7
8 *Design:* Twelve healthy participants were subjected to a randomized series of
9 stressors, including cold pressor test (CPT), mental arithmetic test, apnea, isometric
10 handgrip (IHG) and post-handgrip muscle ischemia (PHGMI), while in the supine
11 position. Spatially-resolved near-infrared spectroscopy was used to measure relative
12 changes in blood volume and oxygenation (TOI) of the resting masseter and biceps
13 muscles. Cardiac output, heart rate and arterial blood pressure (ABP) were also
14 monitored.
15
16

17
18 *Results:* Except apnea, all tests increased ABP. Different response patterns were
19 observed in the 2 muscles: TOI significantly increased during contralateral IHG (1.24
20 $\pm 1.17\%$) but markedly decreased during CPT ($-4.84 \pm 4.09\%$) and PHGMI ($-6.65 \pm$
21 5.31%) in the biceps muscle, while exhibiting consistent increases in the masseter
22 ($1.88 \pm 1.85\%$; $1.60 \pm 1.75\%$; $1.06 \pm 3.29\%$, respectively) ($p < 0.05$).
23
24

25 *Conclusions:* The results allow us to infer differential control of blood flow in head and
26 limb muscles. In general, the masseter appears more prone to dilatation than the
27 biceps, exhibiting opposite changes in response to painful stimuli (CPT and PHGMI).
28 Several mechanisms may mediate this effect, including reduced sympathetic outflow
29 to the extracranial vasculature of the head, generally exposed to lower hydrostatic
30 loads than the rest of the body.
31
32
33

34 *Keywords:*

35
36 Blood flow, oxygenation, masseter, biceps, muscle, stress
37
38
39
40
41
42
43
44
45
46
47
48
49
50
51
52
53
54
55
56
57
58
59
60
61
62
63
64
65



1 Introduction

1
2 Sympathetic activation generally increases heart rate and contractility as well as the
3 total peripheral resistance, which then results in increased arterial blood pressure
4 (ABP). However, different patterns of sympathetic activation may be elicited by
5 different stressors (stressor-specificity), (Pacák & Palkovits, 2001; Roatta et al., 2011)
6 with differential activation to the various organs and tissues (Vissing, 1997). In
7 addition, there is evidence that sympathetic outflow also varies depending on the body
8 area, e.g., with upper and lower limbs. In some cases, opposite vascular effects have
9 been reported, e.g., during unilateral handgrip, dilatation in the contralateral forearm
10 and vasoconstriction in legs has been reported, and similar effects were observed
11 during cognitive tasks (Eklund & Kaijser, 1976; Rusch et al., 1981). Along the same
12 line, Carter et al. (Carter et al., 2005) report a less marked dilatation in legs than in
13 arms during mental stress. It was hypothesized that these differences in the vascular
14 control between arms and legs could be related to the different hydrostatic gradients
15 that affect blood vessels in the two areas (Jacob et al., 2000).

16
17 In this respect, the head is a peculiar body area: because of its position above
18 heart level (whenever the body is sitting or standing), its vascular networks are
19 affected by low hydrostatic load and lower perfusion pressure, compared to other body
20 regions. Interestingly, a different vascular control has been reported for cutaneous
21 tissues of the head as compared to the limbs'. In general, the studies evidenced
22 dilatatory rather than constrictory responses in the facial districts, e.g., during verbal
23 tasks, public speech and mental stress (Vassend & Knardahl, 2005). Whether a
24 differentiated hemodynamic response to stress also concerns the skeletal muscles of
25 the head is unclear. Only a few studies investigated vascular stress responses in head
26 muscles, reporting an increase in tissue oxygenation in the masseter muscle during
27 both mental stress (Hidaka et al., 2004b; Tanosoto et al., 2012) and cold pressor test
28 (Maekawa et al., 1998). However, standard NIRS measurement could have been
29 affected by the concomitant increase in skin blood flow, as has now been
30 demonstrated in many different experimental conditions (Canova et al., 2011; Messere
31 & Roatta, 2013; Tew et al., 2010). Moreover, sporadic contractions and increase in
32 muscle tone, which are a specific component of the stress response (Hidaka et al.,
33 2004a, 2004b; Sjøogaard et al., 2000) may affect hemodynamics in the relevant
34 muscles.

35
36 To our knowledge, comparative studies based on the simultaneous recording from
37 head and limb muscles have never been reported in humans and the few available
38 animal studies do not clarify the issue, reporting no difference in the vascular response
39 of masseter and quadriceps muscles to adrenaline continuous infusion, (Terakawa &
40 Ichinohe, 2012) but stronger vascular constriction in the quadriceps, in response to
41 hypercapnia (Ichinohe et al., 2020).

42
43 The study aimed to test the hypothesis that blood flow of head and limb muscles
44 is differentially controlled, in a stressor-dependent way. Major confounding factors
45 were addressed as follows: 1) continuous surface electromyography (EMG)
46 monitoring was implemented, to detect any possible involuntary muscle contraction;
47
48
49
50
51
52
53
54
55
56
57
58
59
60
61
62
63
64
65



1 2) Spatially-resolved near-infrared spectroscopy (NIRS), was employed to specifically
2 focus the measurement in the deep skeletal muscle tissue while excluding the possible
3 influence of the cutaneous circulation; 3) systemic cardiovascular variables were
4 monitored to check the actual extent of sympathetic activation; 4) subjects were
5 investigated in a supine position, to exclude differences in hydrostatic gradients
6 between head and limbs; 5) 5 different stress tests were implemented to address
7 stressor-specificity.
8
9

10 **2 Methods**

11 **2.1 Subjects**

12 Twelve (9 males, 3 females) healthy volunteers (age: 26 ± 3 years; weight: 68 ± 11 kg;
13 height: 175 ± 9 cm) were enrolled in this study. All of them were non-obese and
14 normotensive (resting blood pressure $<140/90$ mmHg).
15
16
17
18
19

20 **2.2 Ethical approval**

21 This study was carried out in accordance with the Declaration of Helsinki and was
22 approved by the Institutional Ethical Committee of the University of Turin (prot. 60195).
23 All subjects signed informed consent before participating in the study.
24
25
26

27 **2.3 Measurements**

28 A continuous-wave near-infrared spectroscopy (NIRS) device (NIRO-200NX,
29 Hamamatsu Photonics, Hamamatsu, Japan) was used to measure changes in tissue
30 haemoglobin index (THI) and tissue oxygenation index (TOI). The device implements
31 both the classical modified Beer-Lambert method and the spatially-resolved
32 spectroscopy (Grassi & Quaresima, 2016). Based on our previous experience we
33 focused our attention on spatially-resolved parameters which, being less affected by
34 cutaneous circulation, (Canova et al., 2011) provide a more specific monitoring of
35 muscle tissue hemodynamics (Messere et al., 2018a; Messere & Roatta, 2013). In
36 particular, the TOI estimates the percentage ratio of oxygenated to total hemoglobin.
37 However, since NIRS cannot discriminate between myoglobin and hemoglobin, all
38 measurements refer to the whole (myoglobin + hemoglobin) concentration (Messere
39 et al., 2018a). In addition, THI detects changes in (hemoglobin + myoglobin)
40 concentration. Since no change in myoglobin concentration is expected to take place
41 in the short term it is employed to detect changes in blood volume (within the sample
42 volume). Since this variable reveals relative changes with respect to a reference level
43 it is generally normalized to the basal value (taken in resting conditions). The device
44 has two probes: one was placed over the biceps brachii short head muscle of the left
45 arm, and the other over the right superficial masseter muscle, EMG electrodes over
46 the left masseter not leaving enough room for the NIRS probe over the same muscle
47 (see below).
48
49
50
51
52
53
54
55
56

57 Continuous surface electromyography (EMG, Quattro, OT Bioelectronics, Turin,
58 Italy; gain=1200; bandwidth: 10 – 500 Hz) is used to detect any possible involuntary
59
60
61
62
63
64
65



1 muscle contraction during the tests. Two differential recordings were collected from
2 bipolar adhesive electrodes (inter-electrode distance 2.3 cm; Flab, Italy) from the left
3 masseter and biceps brachii muscles. The electrodes were placed on the masseter
4 symmetrically to the NIRS probe and on the biceps just aside of the NIRS probe, in
5 both cases, the inter-electrode axis being parallel to orientation of muscle fibers.
6

7 The HR, ABP and CO were measured by continuous finger-pulse
8 photoplethysmography (CNAP Monitor 500, CNSystems Medizintechnik GmbH, Graz,
9 Austria). Calibration of ABP was periodically performed using a regular pneumatic cuff
10 at the right arm.
11

12 Handgrip force was measured by a custom-made device based on two flexiforce
13 sensors (Tekscan, Inc. Massachusetts, USA), previously calibrated (Testa et al.,
14 2016).
15

16 All signal were continuously digitally sampled (CED Micro 1401, Cambridge
17 Electronic Design, Cambridge, UK) at 100 Hz, except EMG which was sampled at 2
18 kHz and stored on the computer. The Spike2 software (Version 9.14, Cambridge
19 Electronic Design, Cambridge, UK), was used for both data acquisition and analysis.
20
21
22

23 **2.4 Experimental procedures**

24 The experiments were performed in a quiet room with a constant ambient temperature
25 of about 21–23°C. Before starting the recordings, the maximum voluntary contraction
26 (MVC) has been measured and the visual feedback has been provided to the
27 participant.
28

29 The participants were asked to relax while staying in a supine position. After all
30 signals reached a stable condition, a 10 mins baseline period was recorded, after
31 which participants completed a sequence of 5 different tasks, described below.
32

33 The subjects were periodically reminded to maintain relaxed all muscles,
34 particularly the jaw and left arm muscles. The tasks were separated by a minimum of
35 5-mins rest (with additional time if required) to ensure that all variables were stable
36 before starting the next task and were performed in a randomized order, except post-
37 handgrip ischemia, which immediately followed isometric handgrip.
38
39
40
41
42
43

44 **2.4.1 Cold pressor test (CPT)**

45 The subject was asked to immerse the right hand for 2 min into a bucket filled with
46 cold water (8°C, measured by a digital thermometer: Omega 450-ATH, OMEGA
47 Engineering, Stanford, USA). After the task, participants were asked to report the peak
48 pain level experienced by the visual analogue scale: 0 corresponding to 'no pain' and
49 10 corresponding to 'the worst pain imaginable'.
50
51
52
53

54 **2.4.2 Mental arithmetic test (MAT)**

55 The subject was asked to progressively subtract the odd numbers (1, 3, 5, etc.) from
56 1000 for 2 min, writing each result on a paper with the right hand. One operator
57
58
59
60
61
62
63
64
65



standing behind the subject monitored the outcome, promptly asking the subject to repeat the calculation in case of a mistake.

2.4.3 Apnea (AP)

The subject was asked to hold their breath as long as possible. All subjects were able to sustain the apnea for at least 40 s.

2.4.4 Isometric handgrip (IHG)

The subject was requested to grip the handgrip dynamometer at 50% of their MVC for 1 min, with the right hand. Visual feedback of the exerted force was provided on a computer screen, a horizontal cursor placed at 50% MVC indicating the target force level.

2.4.5 Post-handgrip muscle ischemia (PHGMI)

Ten seconds before the cessation of the isometric handgrip, a blood pressure cuff (Gima, Gessate, Italy) was wrapped around the right arm and inflated to a supra-systolic pressure of 250 mmHg and maintained at this level for 2 min to occlude blood flow to the forearm muscles. After the task, the subject was asked to report the peak pain intensity during the test according to a visual analogue scale.

2.5 Data analysis and statistics

The average response to each stressor was computed for all relevant variables: ABP, HR, CO, THI and TOI and presented graphically. Stress-induced changes were evaluated by comparing the time average over the last 10 s of stress exposure with the baseline, computed over the 10 s before. Average effects for the NIRS variables were calculated as follows: $\Delta\text{THI} = (\text{THI}_{\text{stress}} - \text{THI}_{\text{baseline}}) / \text{THI}_{\text{baseline}} * 100$, expressed as % of baseline; $\Delta\text{TOI} = \text{TOI}_{\text{stress}} - \text{TOI}_{\text{baseline}}$, expressed as % of oxygenated hemoglobin. Normality of data distribution was first verified by the Kolmogorov-Smirnov test. Statistical significance (with familywise alpha level of 0.05) of stress-induced changes in all these variables was then assessed by Student-t and Hochberg's tests, with Dunn/Sidak alpha correction method for multiple comparisons. Differences between masseter and biceps muscles in terms of ΔTHI and ΔTOI were tested with the same procedure. The Student-t test was used to compare basal oxygenation levels in the biceps and masseter muscles. Statistical analysis was performed using MATLAB[®] Version R2020b (The MathWorks, Natick, Massachusetts, USA). Data in the Results section are presented as mean \pm standard deviation.

3 Results

During basal conditions, the TOI in the masseter muscle (80.0 ± 2.6 %) was higher than in the biceps (76.7 ± 4.7 %) in 9 out of 12 subjects ($p = 0.058$).

Absence of relevant signs of EMG activation during baseline intervals and during the different tasks was verified by visual inspection of the recordings. An example of

1
2
3
4
5
6
7
8
9
10
11
12
13
14
15
16
17
18
19
20
21
22
23
24
25
26
27
28
29
30
31
32
33
34
35
36
37
38
39
40
41
42
43
44
45
46
47
48
49
50
51
52
53
54
55
56
57
58
59
60
61
62
63
64
65



original recordings from a representative subject during the CPT test is given in Figure 1A. As a term of comparison, EMG activation and corresponding changes in NIRS variables evoked by short voluntary isometric contractions are shown in Fig. 1B.

3.1 Cold pressor test (CPT)

The average response to CPT is described by the average tracings of Figure 2A, and average effects for the different variables are reported in Figure 2B. The test significantly increased ABP (from 90.1 ± 14.0 to 101.6 ± 15.9 mmHg, $p < 0.05$) while producing a non-significant decrease in HR (from 69.1 ± 11.9 to 68.2 ± 9.8 bpm, $p < 0.05$) and CO (from 68.2 ± 13.7 to 67.2 ± 13.6 dL/min, $p < 0.05$).

Notably, the CPT effects on NIRS variables were opposite in the two muscles, increasing in the masseter muscle (Δ THI: 9 ± 9 %, $P < 0.05$; TOI: from 79.5 ± 2.9 to 81.1 ± 2.2 %, $p < 0.05$) and decreasing in the biceps muscle (Δ THI: -2 ± 7 %, n.s.; TOI: from 75.6 ± 4.2 % to 70.7 ± 4.8 %, $p < 0.05$).

3.2 Mental arithmetic test (MAT)

The average response to MAT (Figure 3A and B) also exhibited a significant increase in ABP (from 84.1 ± 15.8 to 98.7 ± 20.6 mmHg, $p < 0.05$) while producing a non-significant increase in HR and CO.

The masseter muscle exhibited a significant increase in oxygenation (TOI: from 80.5 ± 3.1 to 82.5 ± 3.6 %, $p < 0.05$) and a non-significant increase in blood volume (Δ THI: 5 ± 9 %) while non-significant changes were observed in the biceps muscle.

3.3 Apnea (AP)

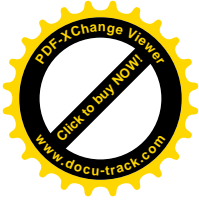
No significant changes were exhibited by the different variables during apnea (see Figures. 4A and B), although THI showed a tendency to increase in the masseter muscle (Δ THI: 14 ± 21 %, n.s.) that was not exhibited by the biceps (-2 ± 5 %).

3.4 Isometric handgrip (IHG) and Post-handgrip muscle ischemia (PHGMI)

The average response to IHG and PHGMI is described by the average tracings of Figure 5A, and average effects for the different variables are reported in Figure 5B and C. With IHG, both HR (from 72.4 ± 12.8 to 85.5 ± 12.6 bpm; $p < 0.05$) and in ABP (from 86.9 ± 21.2 to 106.5 ± 22.1 mmHg; $p < 0.05$) were significantly increased. TOI similarly increased in both the masseter (from 80.2 ± 2.5 to 82.1 ± 3.4 %, $p < 0.05$) and the biceps muscle (from 76.5 ± 5.0 % to 78.2 ± 4.9 %, $p < 0.05$) while THI increased only in the masseter muscle (Δ THI: 7 ± 7 %, $P < 0.05$) and significantly more than in the biceps muscle ($p < 0.05$).

Compared to pre-IHG resting levels, PHGMI resulted in a marked increase in ABP (from 86.9 ± 21.2 to 103.0 ± 18.1 mmHg; $p < 0.05$), accompanied by a decreasing trend in HR (from 72.4 ± 12.8 to 67.1 ± 10.2 bpm; n.s.) and a decrease in CO (from 74.7 ± 12.8 to 66.7 ± 14.0 dL/min; $p < 0.05$). As with CPT, NIRS response to PHGMI produced

1
2
3
4
5
6
7
8
9
10
11
12
13
14
15
16
17
18
19
20
21
22
23
24
25
26
27
28
29
30
31
32
33
34
35
36
37
38
39
40
41
42
43
44
45
46
47
48
49
50
51
52
53
54
55
56
57
58
59
60
61
62
63
64
65



1 significantly different responses in the two muscles, with significant increases in the
2 masseter (TOI: from $80.2 \pm 2.5\%$ to $81.2 \pm 3.8\%$, $p < 0.05$; ΔTHI : $6 \pm 10\%$, $P < 0.05$) and
3 decreases in the biceps (TOI: from $76.9 \pm 5.0\%$ to $70.3.2 \pm 5.5\%$, $p < 0.05$; ΔTHI : $-3 \pm$
4 7% , n.s.).
5

6 **4 Discussion**

7
8 For the first time, to our knowledge, the study focused on the differential control of
9 blood flow in head and limb muscles during stress. We hypothesized that the
10 autonomic vascular control could be differentiated to these body areas, also
11 depending on the type of stress.
12

13 The results evidenced that: 1) all tests effectively activated the sympathetic
14 nervous system as revealed by significant increases in ABP and/or HR, except apnea.
15 2) in the masseter muscle TOI increased in all tests (although, non-significantly in
16 apnea); 3) in the biceps muscle TOI exhibited both increases (in IHG) and marked
17 decrease (in CPT and PHGMI) depending on the stressor. 5) THI changes were
18 always concordant with TOI's, although generally less significant. As will be discussed
19 below, these observations support the hypothesis that sympathetic outflow to skeletal
20 muscles of the head and limbs is differentially controlled in a stressor-dependent way.
21

22 **4.1 Interpretation of NIRS signals**

23 It is well known that NIRS does not provide a direct measurement of blood flow.
24 However, if a condition of constant metabolism can be hypothesized (e.g., in
25 completely relaxed muscles), changes in blood flow would be associated with
26 concordant changes in tissue oxygenation and, consequently, changes in oxygenation
27 may be used to detect changes in blood flow. This concept has been demonstrated in
28 several studies in which a blood flow reduction induced by sympathetic
29 vasoconstriction also resulted in decreased tissue oxygenation (Boushel & Piantadosi,
30 2000; Fadel et al., 2004; Ogata et al., 2002, 2012). Conversely, the transient
31 hyperemia produced by a short-lasting compressive stimulus, in relaxed muscles
32 results in a consistent increase in tissue oxygenation (Messere et al., 2017, 2018b).
33 Constriction/dilatation of blood vessels may also produce a slight reduction/increase
34 in blood volume indices, (Ogata et al., 2002) unless this effect is hidden by a larger
35 volume change of the venous compartment, e.g., due to vessel compression (Messere
36 et al., 2017). Consistent with this concept, an increase in TOI was never associated
37 with a decrease in THI, in the present study. On this basis, considering that both
38 masseter and biceps muscles remained relaxed throughout the tests, as verified by
39 continuous EMG monitoring, we can reasonably interpret changes in TOI as a
40 consequence of corresponding changes in muscle blood flow. The responses to the
41 different stressors will be here briefly individually discussed.
42

43 **4.2 Cold pressor test (CPT)**

44 The CPT is an established sympathetic activation test (Seals, 1991). Somatosensory
45 stimulation induced by the cold stimulus increases blood pressure; impulses from
46
47
48
49
50
51
52
53
54
55

1
2
3
4
5
6
7
8
9
10
11
12
13
14
15
16
17
18
19
20
21
22
23
24
25
26
27
28
29
30
31
32
33
34
35
36
37
38
39
40
41
42
43
44
45
46
47
48
49
50
51
52
53
54
55
56
57
58
59
60
61
62
63
64
65



1
2
3
4
5
6
7
8
9
10
11
12
13
14
15
16
17
18
19
20
21
22
23
24
25
26
27
28
29
30
31
32
33
34
35
36
37
38
39
40
41
42
43
44
45
46
47
48
49
50
51
52
53
54
55
56
57
58
59
60
61
62
63
64
65

receptors in the skin relay via afferent pathways to C1 cells in the rostral ventrolateral (RVL) reticular nucleus and are transmitted via efferent sympathetic neurons to peripheral blood vessels from thoracic spinal cord (Reis et al., 1989) evoking a general rise in total peripheral resistance with alpha-adrenergic vasoconstriction of upper and lower limbs, (Montoya et al., 1997; Wray et al., 2007) accompanied by decreased tissue oxygenation (Ogata et al., 2012). Few reports described effects of opposite signs in head muscles, i.e., increase in blood volume and oxygen saturation during CPT, suggesting increased blood flow in this area (Maekawa et al., 1998). As anticipated in the introduction the standard NIRS monitoring as used in these studies could have been affected by cutaneous circulatory changes. However, the present data are in agreement with this general picture: we confirm the occurrence of these opposite responses in head and limb muscles, consisting of increased perfusion of the masseter muscle and a strong decrease in the biceps muscle (Figure 2).

4.3 Mental arithmetic test (MAT)

As compared to CPT, the actively demanding situations such as information processing and problem-solving (MAT) are considered to be characterized by a beta-adrenergic dominance, i.e., they tend to elicit cardiovascular responses that are mediated by an increase in myocardial contractility and HR, increased ADR release, resulting in increased CO, with minor changes in total peripheral resistance (Goldberg et al., 1996; Montoya et al., 1997; Tidgren & Hjerdahl, 1989). Within this frame, vasodilation in skeletal muscle has also been reported (Carter et al., 2005; Linde et al., 1989; Rusch et al., 1981), besides reduced blood flow to the kidneys (Tidgren & Hjerdahl, 1989) and the skin (Marriott et al., 1990). As for the head muscles two early reports from a single group are available, based on standard Beer-Lambert NIRS, in which the effect of MAT on masseter tissue oxygenation was investigated. Again, the issue of skin contribution to the NIRS measurement is relevant, as skin blood flow is known to be affected by MAT and cognitive tasks (Drummond, 1994; Vassend & Knardahl, 2005). In the first study, an early decrease in TOI, assessed over a 10-s interval, was reported to occur in association with the beginning of sudomotor activity at the finger (Hidaka et al., 2004a). In the second study a persistent increase in TOI of the masseter muscle was observed in subjects exposed to a long-lasting (2 h) mental task, although, this stressful activity also increased basal EMG activity (significantly in the temporal muscle) (Hidaka et al., 2004b). More recently, using spatially-resolved NIRS Tanosoto et al. (Tanosoto et al., 2012) also reported increased TOI in the masseter muscle during a paced auditory mental task. The present results are compatible with the general response to MAT described above and clarify that a significant TOI increase takes place in the masseter muscle within a standard 2-min lasting test, in the absence of EMG activity, besides a non-significant increasing trend in the biceps (Figure 3).



4.4 Apnea (AP)

1
2 A complex circulatory response is generated by apnea, whereby the dilatory effects of
3 hypoxia are counteracted by the constrictor sympathetic activation (Halliwill, 2003). In
4 fact, an increased muscle sympathetic nerve activity as well as in circulating
5 catecholamines has been reported (Leuenberger et al., 2001) along with decreased
6 oxygenation in skeletal muscles of the limbs, (Bouten et al., 2020) while no indication
7 about the effects on head muscles was found in the literature. In our experiments, we
8 did not evidence a decrease in TOI in both masseter and biceps muscles, and weak
9 and non-significant effects were reported also for the other variables. This is likely
10 because the test was not pushed to maximal individual limits and that all responses
11 were analysed at the shortest duration of 40 s, which certainly contributed to attenuate
12 the effects. We only observe that a larger although a not significant increase in THI
13 takes place in the masseter, compared to the biceps. We speculate that this is a
14 consequence of increased venous pressure due to the increased intra-thoracic
15 pressure provoked by the passive holding of the deep breath (similarly to the Valsalva
16 manoeuvre). Since venous pressure would similarly affect both muscles, a larger
17 effect in the masseter muscle could reveal a lesser constrictor tone.
18
19
20
21
22
23
24

4.5 Isometric handgrip (IHG)

25
26
27 Handgrip exercise is an established test for sympathetic activation, producing marked
28 increases in ABP, HR, CO, and MSNA in general (Low, 2003). This results in a
29 systematic increase in vascular resistance in muscles. However, a dilatory response
30 is generally observed in the contralateral arm. Once attributed to sympathetic dilatory
31 cholinergic fibers (Sanders et al., 1989) it appears now to be essentially a beta2
32 adrenergic mechanism that also implicates endothelium-released nitric oxide (Joyner
33 & Dietz, 2003). The description of vascular effects in head muscles during handgrip
34 appears to be missing in the literature.
35
36
37

38 The response we observed fits with the current picture described above, in
39 particular, the dilatory response of the contralateral arm is confirmed by the significant
40 increase in TOI. In addition, the same response is exhibited by the masseter muscles,
41 which also manifests an increase in THI.
42
43
44

4.6 Post-handgrip muscle ischemia (PHGMI)

45
46
47 PHGMI consistently results in a pressor response characterized by powerful peripheral
48 vasoconstriction and decreased HR and CO (Boulton et al., 2018; Rusch et al., 1981).
49 While tissue oxygenation decreases in the concerned muscles prior to exercise and
50 subsequent ischemia, (Boushel & Piantadosi, 2000) the present observation of a
51 marked TOI decrease in the contralateral biceps muscle (not concerned by the
52 contraction and the ischemia) supports the occurrence of a general constrictor
53 response during PHGMI, that was reported to concern both upper and lower limbs
54 (Rusch et al., 1981). Surprisingly, this effect is not apparent in the masseter muscle,
55 which exhibits instead a significant increase in oxygenation, again suggesting
56 increased perfusion, during PHGMI. We further observe that the average pattern of
57
58
59
60
61
62
63
64
65



1 response to PHGMI qualitatively mimics the response to CPT. It is tempting to
2 speculate that this represents the sympathetic response pattern to painful stimuli, even
3 though the relevant somatosensory pathways are different for the two tests, originating
4 mostly from cutaneous receptors for CPT, and from group III and IV muscle afferents
5 for PHGMI. This possibility is further supported by the observation that muscle
6 sympathetic nerve activity is not differently affected by skin or muscle pain produced
7 by injection of hypertonic saline (Burton et al., 2009).
8
9

10 **4.7 Peculiarity of the masseter muscle**

11 Several studies investigated the histological characteristics of jaw and limb muscles
12 evidencing a richer composition of different fiber types, higher compartmentalization,
13 and smaller average fiber size in the jaw than in limb muscles, which was interpreted
14 as functional to implement a higher variability of tasks (speaking, chewing, singing,
15 yawning, etc.), better force gradation and better adaptations to environmental
16 constraints (English, 1985; Korfage et al., 2005; Österlund et al., 2011). One study
17 specifically addressed differences in anatomical vascularization: capillary density was
18 significantly higher in the head (orofacial and masseter) than in limb muscles (Stål et
19 al., 1996). In particular, the authors found in the masseter the highest capillary density
20 ever reported of 686-813 capillaries/mm², which in the biceps muscle only reached
21 440 capillaries/mm² (Stål et al., 1996). They interpreted this observation as due to a
22 relatively higher demand of blood supply in orofacial and masticatory muscles,
23 possibly related to 1) the high oxidative capacity of type II masseter fibers, and 2) a
24 stronger control over facial blood flow, as may be necessary for the temperature
25 regulation, of tissues more exposed to environmental challenges as compared to other
26 body areas.
27
28

29 The presently observed weak or absent sympathetic constrictor action in the
30 masseter muscle under a variety of stressful challenges fits with the idea that the head
31 region is particularly protected against the risk of hypoperfusion and ischemia as
32 indicated by histological reports.
33
34

35 One additional explanation could be that extracranial head districts are affected by
36 a lower perfusion pressure, compared to other body areas situated at or below heart
37 level, whenever the body is in an erect or sitting posture. The head is continuously
38 exposed to this condition during the whole day, with basically the only exception of
39 sleeping time. Increased vascularization and weakened constrictor action could be the
40 results of an adaptation to this situation. Other data support this interpretation: 1)
41 Increased vascularization is not limited to the jaw muscles but is shared by orofacial
42 muscles in general, sharing the same hemodynamic situation, (Stål et al., 1996) 2) a
43 similar difference, i.e., weaker sympathetic constrictor responses is reported in upper,
44 compared to lower limbs, (Rusch et al., 1981) thereby indicating increased
45 sympathetic tone to body areas affected by high hydrostatic pressure.
46
47
48
49
50
51
52
53
54
55
56
57
58
59
60
61
62
63
64
65



4.8 Mechanisms underlying differential sympathetic control

1
2 Although the present study was not designed to identify the mechanisms underlying
3 the differential sympathetic action to the two muscles, the different possibilities can be
4 briefly discussed. While the general sympathetic action on vascular networks is known
5 to be an alpha-adrenergic mediated vasoconstriction, a dilatatory response has often
6 been reported in skeletal muscles and is considered to be mediated by beta-2
7 adrenergic receptors. The alternative hypothesis of Ach-mediated dilatation (Sanders
8 et al., 1989) has been dismissed since vascular cholinergic fibers have never been
9 observed in human skeletal muscles (Joyner & Dietz, 2003). As such, a beta-2
10 mediated-dilatation is likely to result from the action of circulating adrenaline (which
11 has a higher affinity to beta2-ADR than noradrenaline) as far as the alpha-1 mediated
12 constriction does not prevail. Exposure to a small amount of ADR produced dilatation
13 in both masseter and quadriceps rabbit muscles, while higher doses produced
14 vasoconstriction (Terakawa & Ichinohe, 2012). Thus, the net “beta” or “alpha” effect
15 (Montoya et al., 1997) observed on a given muscle, may depend on several factors
16 such as the density of beta- and alpha-ADRs in the muscle under study as well as on
17 the relative concentrations of ADR and NA, resulting from a stressor-dependent
18 hormonal vs. neural sympathetic outflow (Goldstein & Kopin, 2008; Roatta et al.,
19 2011). The hyperemic responses to stress observed in the present study could result
20 from a higher density of beta2-ADR in the masseter compared to the biceps muscle,
21 but we could find no comparative study in the literature supporting this hypothesis.
22 Alternatively, the increase in sympathetic outflow to head muscles could be generally
23 lower than to limb muscles, but also in this case there is no direct support to the
24 hypothesis, given that, to our knowledge, muscle sympathetic nerve activity has never
25 been investigated in head muscles.

26
27 It should also be observed that increased muscle perfusion may also take place
28 during vasoconstriction if a concomitant and proportionally stronger increase in ABP
29 also occurs. Irrespective of the underlying mechanisms the present results evidence
30 a differential vascular effect in the two muscles pointing to a consistent dilatatory or a
31 weaker constrictory action in the masseter compared to the biceps muscle.
32
33

4.9 Implications

34
35
36
37
38
39
40
41
42
43
44
45 The reason for investigating the effect of sympathetic activation on facial and
46 masticatory muscles has often been the possible implication of the SNS in painful
47 muscle syndromes (Hidaka et al., 2004a, 2004b; Maekawa et al., 1998). In fact, the
48 masseter muscle, is a common site for myofascial pain, more often localized in the
49 deep part of the muscle (Fricton et al., 1985).

50
51
52
53
54
55
56
57
58
59
60
61
62
63
64
65
66
67
68
69
70
71
72
73
74
75
76
77
78
79
80
81
82
83
84
85
86
87
88
89
90
91
92
93
94
95
96
97
98
99
100
101
102
103
104
105
106
107
108
109
110
111
112
113
114
115
116
117
118
119
120
121
122
123
124
125
126
127
128
129
130
131
132
133
134
135
136
137
138
139
140
141
142
143
144
145
146
147
148
149
150
151
152
153
154
155
156
157
158
159
160
161
162
163
164
165
166
167
168
169
170
171
172
173
174
175
176
177
178
179
180
181
182
183
184
185
186
187
188
189
190
191
192
193
194
195
196
197
198
199
200
201
202
203
204
205
206
207
208
209
210
211
212
213
214
215
216
217
218
219
220
221
222
223
224
225
226
227
228
229
230
231
232
233
234
235
236
237
238
239
240
241
242
243
244
245
246
247
248
249
250
251
252
253
254
255
256
257
258
259
260
261
262
263
264
265
266
267
268
269
270
271
272
273
274
275
276
277
278
279
280
281
282
283
284
285
286
287
288
289
290
291
292
293
294
295
296
297
298
299
300
301
302
303
304
305
306
307
308
309
310
311
312
313
314
315
316
317
318
319
320
321
322
323
324
325
326
327
328
329
330
331
332
333
334
335
336
337
338
339
340
341
342
343
344
345
346
347
348
349
350
351
352
353
354
355
356
357
358
359
360
361
362
363
364
365
366
367
368
369
370
371
372
373
374
375
376
377
378
379
380
381
382
383
384
385
386
387
388
389
390
391
392
393
394
395
396
397
398
399
400
401
402
403
404
405
406
407
408
409
410
411
412
413
414
415
416
417
418
419
420
421
422
423
424
425
426
427
428
429
430
431
432
433
434
435
436
437
438
439
440
441
442
443
444
445
446
447
448
449
450
451
452
453
454
455
456
457
458
459
460
461
462
463
464
465
466
467
468
469
470
471
472
473
474
475
476
477
478
479
480
481
482
483
484
485
486
487
488
489
490
491
492
493
494
495
496
497
498
499
500
501
502
503
504
505
506
507
508
509
510
511
512
513
514
515
516
517
518
519
520
521
522
523
524
525
526
527
528
529
530
531
532
533
534
535
536
537
538
539
540
541
542
543
544
545
546
547
548
549
550
551
552
553
554
555
556
557
558
559
560
561
562
563
564
565
566
567
568
569
570
571
572
573
574
575
576
577
578
579
580
581
582
583
584
585
586
587
588
589
590
591
592
593
594
595
596
597
598
599
600
601
602
603
604
605
606
607
608
609
610
611
612
613
614
615
616
617
618
619
620
621
622
623
624
625
626
627
628
629
630
631
632
633
634
635
636
637
638
639
640
641
642
643
644
645
646
647
648
649
650
651
652
653
654
655
656
657
658
659
660
661
662
663
664
665
666
667
668
669
670
671
672
673
674
675
676
677
678
679
680
681
682
683
684
685
686
687
688
689
690
691
692
693
694
695
696
697
698
699
700
701
702
703
704
705
706
707
708
709
710
711
712
713
714
715
716
717
718
719
720
721
722
723
724
725
726
727
728
729
730
731
732
733
734
735
736
737
738
739
740
741
742
743
744
745
746
747
748
749
750
751
752
753
754
755
756
757
758
759
760
761
762
763
764
765
766
767
768
769
770
771
772
773
774
775
776
777
778
779
780
781
782
783
784
785
786
787
788
789
790
791
792
793
794
795
796
797
798
799
800
801
802
803
804
805
806
807
808
809
810
811
812
813
814
815
816
817
818
819
820
821
822
823
824
825
826
827
828
829
830
831
832
833
834
835
836
837
838
839
840
841
842
843
844
845
846
847
848
849
850
851
852
853
854
855
856
857
858
859
860
861
862
863
864
865
866
867
868
869
870
871
872
873
874
875
876
877
878
879
880
881
882
883
884
885
886
887
888
889
890
891
892
893
894
895
896
897
898
899
900
901
902
903
904
905
906
907
908
909
910
911
912
913
914
915
916
917
918
919
920
921
922
923
924
925
926
927
928
929
930
931
932
933
934
935
936
937
938
939
940
941
942
943
944
945
946
947
948
949
950
951
952
953
954
955
956
957
958
959
960
961
962
963
964
965
966
967
968
969
970
971
972
973
974
975
976
977
978
979
980
981
982
983
984
985
986
987
988
989
990
991
992
993
994
995
996
997
998
999
1000



1 In this respect, the vasoconstrictory sympathetic action is considered to worsen the
2 situation (Koltzenburg, 1997; Passatore & Roatta, 2006; Queme et al., 2017).

3 Although blood flow reduction is commonly observed in response to electrical
4 sympathetic stimulation in animal models (Roatta et al., 2009) or physiological
5 stressful stimuli, (Ichinohe et al., 2020; Roatta et al., 2011) we could not find any report
6 of sympathetic vasoconstriction in orofacial muscles in humans. Human studies based
7 on NIRS investigations generally report increased blood volume and/or oxygenation
8 in response to stress, suggestive of increased perfusion (Hidaka et al., 2004b;
9 Maekawa et al., 1998). It was suggested that the lack of such dilatory response could
10 be related to the occurrence of myofascial pain (Maekawa et al., 2002). Conversely,
11 excessive dilatation in extra-cranial territories was also considered as a possible cause
12 of pain (see (Shevel, 2011) for a review), while additional pathways not based on
13 hemodynamic alterations have also been hypothesized (Inchiosa Jr, 2013). The
14 present study confirms the general absence of vasoconstriction in the masseter
15 muscle in response to a variety of different stressors but does not provide additional
16 elements to clarify the mechanisms behind chronic muscle pain.
17
18
19
20
21
22

23 **5 Conclusion**

24 Simultaneous hemodynamic monitoring of head and limb muscles by SRS NIRS
25 evidenced differential patterns of response to different stressors: while the biceps
26 muscle exhibited both constrictory and dilatory responses, no evidence of constriction
27 was ever observed in the masseter, often exhibiting a significant increase in tissue
28 oxygenation and blood volume. In particular, clear-cut opposite changes were
29 exhibited by the two muscles in response to painful stimuli (CPT and PHGMI). We
30 speculate that this results from a general strategy aimed at preserving blood flow to
31 the head region, which is generally perfused at a lower blood pressure because of the
32 hydrostatic gradient associated with the erect posture.
33
34
35
36
37
38

39 **Funding**

40 A.R. was supported by a PhD fellowship supplied by the "Partnership for Knowledge
41 (PFK)" program of the Italian Agency for Cooperation to Development (AICS)".
42
43
44
45

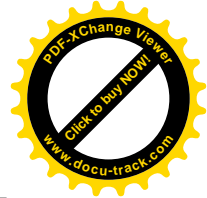
46 *Conflict of interest*

47 The authors declare no conflict of interest.
48
49
50
51
52
53
54
55
56
57
58
59
60
61
62
63
64
65



References

- 1
2 Boulton, D., Taylor, C. E., Green, S., & Macefield, V. G. (2018). The metaboreflex does not contribute
3 to the increase in muscle sympathetic nerve activity to contracting muscle during static exercise
4 in humans. *The Journal of Physiology*, 596(6), 1091–1102. <https://doi.org/10.1113/JP275526>
- 5 Boushel, R., & Piantadosi, C. A. (2000). Near-infrared spectroscopy for monitoring muscle oxygenation.
6 *Acta Physiologica Scandinavica*, 168(4), 615–622. [https://doi.org/10.1046/j.1365-](https://doi.org/10.1046/j.1365-201x.2000.00713.x)
7 [201x.2000.00713.x](https://doi.org/10.1046/j.1365-201x.2000.00713.x)
- 8 Bouten, J., Bourgois, J. G., & Boone, J. (2020). Hold your breath: peripheral and cerebral oxygenation
9 during dry static apnea. *European Journal of Applied Physiology*, 120(10), 2213–2222.
10 <https://doi.org/10.1007/s00421-020-04445-y>
- 11 Burton, A. R., Birznieks, I., Spaak, J., Henderson, L. A., & MacEfield, V. G. (2009). Effects of deep and
12 superficial experimentally induced acute pain on skin sympathetic nerve activity in human
13 subjects. *Experimental Brain Research*, 195(2), 317–324. [https://doi.org/10.1007/s00221-009-](https://doi.org/10.1007/s00221-009-1790-9)
14 [1790-9](https://doi.org/10.1007/s00221-009-1790-9)
- 15 Canova, D., Roatta, S., Bosone, D., & Micieli, G. (2011). Inconsistent detection of changes in cerebral
16 blood volume by near infrared spectroscopy in standard clinical tests. *Journal of Applied*
17 *Physiology*, 110(6), 1646–1655. <https://doi.org/10.1152/jappphysiol.00003.2011>
- 18 Carter, J. R., Cooke, W. H., & Ray, C. A. (2005). Forearm neurovascular responses during mental
19 stress and vestibular activation. *American Journal of Physiology - Heart and Circulatory*
20 *Physiology*, 288(2 57-2). <https://doi.org/10.1152/ajpheart.00569.2004>
- 21 Drummond, P. D. (1994). The effect of anger and pleasure on facial blood flow. *Australian Journal of*
22 *Psychology*, 46(2), 95–99. <https://doi.org/10.1080/00049539408259479>
- 23 Eklund, B., & Kaijser, L. (1976). Effect of regional alpha- and beta-adrenergic blockade on blood flow
24 in the resting forearm during contralateral isometric handgrip. *The Journal of Physiology*, 262(1),
25 39–50. <https://doi.org/10.1113/jphysiol.1976.sp011584>
- 26 English, A. W. (1985). Limbs vs. jaws: Can they be compared? *Integrative and Comparative Biology*,
27 25(2), 351–364. <https://doi.org/10.1093/icb/25.2.351>
- 28 Fadel, P. J., Keller, D. M., Watanabe, H., Raven, P. B., & Thomas, G. D. (2004). Noninvasive
29 assessment of sympathetic vasoconstriction in human and rodent skeletal muscle using near-
30 infrared spectroscopy and Doppler ultrasound. *Journal of Applied Physiology*, 96(4), 1323–1330.
31 <https://doi.org/10.1152/jappphysiol.01041.2003>
- 32 Friction, J. R., Kroening, R., Haley, D., & Siegert, R. (1985). Myofascial pain syndrome of the head and
33 neck: a review of clinical characteristics of 164 patients. *Oral Surgery, Oral Medicine, Oral*
34 *Pathology*, 60(6), 615–623. [https://doi.org/10.1016/0030-4220\(85\)90364-0](https://doi.org/10.1016/0030-4220(85)90364-0)
- 35 Goldberg, A. D., Becker, L. C., Bonsall, R., Cohen, J. D., Ketterer, M. W., Kaufman, P. G., Krantz, D.
36 S., Light, K. C., McMahon, R. P., Noreuil, T., Pepine, C. J., Raczynski, J., Stone, P. H., Dawn
37 Strother, R. N., Taylor, H., & Sheps, D. S. (1996). Ischemic, hemodynamic, and neurohormonal
38 responses to mental and exercise stress: Experience from the Psychophysiological Investigations
39 of Myocardial Ischemia study (PIMI). *Circulation*, 94(10), 2402–2409.
40 <https://doi.org/10.1161/01.cir.94.10.2402>
- 41 Goldstein, D. S., & Kopin, I. J. (2008). Adrenomedullary, adrenocortical, and sympathoneural responses
42 to stressors: a meta-analysis. *Endocrine Regulations*, 42(4), 111–119.
43 <https://pubmed.ncbi.nlm.nih.gov/18999898/>
- 44 Grassi, B., & Quaresima, V. (2016). Near-infrared spectroscopy and skeletal muscle oxidative function
45 in vivo in health and disease: a review from an exercise physiology perspective. *Journal of*
46 *Biomedical Optics*, 21(9), 0913131–20. <https://doi.org/10.1117/1.JBO.21.9.091313>
- 47 Halliwill, J. R. (2003). Hypoxic regulation of blood flow in humans. Skeletal muscle circulation and the
48 role of epinephrine. *Advances in Experimental Medicine and Biology*, 543, 223–236.
49 <https://pubmed.ncbi.nlm.nih.gov/14713125/>
- 50 Hidaka, O., Yanagi, M., & Takada, K. (2004a). Changes in masseteric hemodynamics time-related to
51 mental stress. *Journal of Dental Research*, 83(2), 185–190.
52 <https://doi.org/10.1177/154405910408300220>
- 53 Hidaka, O., Yanagi, M., & Takada, K. (2004b). Mental stress-induced physiological changes in the
54 human masseter muscle. *Journal of Dental Research*, 83(3), 227–231.
55 <https://doi.org/10.1177/154405910408300308>
- 56 Ichinohe, T., Akiike, Y., Saito, N., Koike, M., Koshika, K., & Matsuura, N. (2020). Effects of Stellate
57 Ganglion Blockade on Muscle Blood Flow During Hypercapnia. *Scientific Reports*, 67(3), 135–
58 139. <https://doi.org/10.2344/anpr-67-01-04>
- 59 Inchiosa Jr, M. A. (2013). Phenoxybenzamine in complex regional pain syndrome: Potential role and
60
61
62
63
64
65



- novel mechanisms. *Anesthesiology Research and Practice*, 2013, 1–7. <https://doi.org/10.1155/2013/978615>
- 1
2 Jacob, G., Costa, F., Shannon, J., Robertson, D., & Biaggioni, I. (2000). Dissociation Between Neural
3 and Vascular Responses to Sympathetic Stimulation. *Hypertension*, 35(1), 76.
4 <https://doi.org/10.1161/01.hyp.35.1.76>
- 5 Jänig, W., & Häbler, H. J. (2000). Sympathetic nervous system: contribution to chronic pain. *Progress*
6 *in Brain Research*, 129, 451–468. [https://doi.org/10.1016/s0079-6123\(00\)80003-5](https://doi.org/10.1016/s0079-6123(00)80003-5)
- 7 Joyner, M. J., & Dietz, N. M. (2003). Sympathetic vasodilation in human muscle. *Acta Physiologica*
8 *Scandinavica*, 177(3), 329–336. <https://doi.org/10.1046/j.1365-201X.2003.01090.x>
- 9 Koltzenburg, M. (1997). The Sympathetic Nervous System and Pain. In D. A. & B. JM. (Eds.), *The*
10 *Pharmacology of Pain (Handbook of Experimental Pharmacology)* (Volume 130, pp. 61–91).
11 Springer Verlag. https://doi.org/10.1007/978-3-642-60777-6_4
- 12 Korfage, J. A. M., Koolstra, J. H., Langenbach, G. E. J., & Van Eijden, T. M. G. J. (2005). Fiber-type
13 composition of the human jaw muscles - (Part 2) Role of hybrid fibers and factors responsible for
14 inter-individual variation. *Journal of Dental Research*, 84(9), 784–793.
15 <https://doi.org/10.1177/1544405910508400902>
- 16 Leuenberger, U. A., Hardy, J. C., Herr, M. D., Gray, K. S., & Sinoway, L. I. (2001). Hypoxia augments
17 apnea-induced peripheral vasoconstriction in humans. *Journal of Applied Physiology*, 90(4),
18 1516–1522. <https://doi.org/10.1152/jap.2001.90.4.1516>
- 19 Linde, B., Hjemdahl, P., Freyschuss, U., & Juhlin-Dannfelt, A. (1989). Adipose tissue and skeletal
20 muscle blood flow during mental stress. *The American Journal of Physiology*, 256(1 Pt 1), E12-
21 18. <https://doi.org/10.1152/ajpendo.1989.256.1.E12>
- 22 Low, P. A. (2003). Testing the autonomic nervous system. *Seminars in Neurology*, 23(4), 407–421.
23 <https://doi.org/10.1055/s-2004-817725>
- 24 Maekawa, K., Clark, G. T., & Kuboki, T. (2002). Intramuscular hypoperfusion, adrenergic receptors, and
25 chronic muscle pain. *The Journal of Pain*, 3(4), 251–260. <https://doi.org/10.1054/jpai.2002.125923>
- 26 Maekawa, K., Kuboki, T., Clark, G. T., Shinoda, M., & Yamashita, A. (1998). Cold pressor stimulus
27 temperature and resting masseter muscle haemodynamics in normal humans. *Archives of Oral*
28 *Biology*, 43(11), 849–859. [https://doi.org/10.1016/S0003-9969\(98\)00072-7](https://doi.org/10.1016/S0003-9969(98)00072-7)
- 29 Marriott, I., Marshall, J. M., & Johns, E. J. (1990). Cutaneous vascular responses evoked in the hand
30 by the cold pressor test and by mental arithmetic. *Clinical Science*, 79(1), 43–50.
31 <https://doi.org/10.1042/cs0790043>
- 32 Messere, A., Ceravolo, G., Franco, W., Maffiodo, D., Ferraresi, C., & Roatta, S. (2017). Increased tissue
33 oxygenation explains the attenuation of hyperemia upon repetitive pneumatic compression of the
34 lower leg. *Journal of Applied Physiology*, 123(6), 1451–1460.
35 <https://doi.org/10.1152/jap.2017.123.6.1451>
- 36 Messere, A., & Roatta, S. (2013). Influence of cutaneous and muscular circulation on spatially resolved
37 versus standard Beer-Lambert near-infrared spectroscopy. *Physiological Reports*, 1(7), 1–10.
38 <https://doi.org/10.1002/phy2.179>
- 39 Messere, A., Tschakovsky, M., Seddone, S., Lulli, G., Franco, W., Maffiodo, D., Ferraresi, C., & Roatta,
40 S. (2018a). Hyper-Oxygenation Attenuates the Rapid Vasodilatory Response to Muscle
41 Contraction and Compression. *Frontiers in Physiology*, 9(1078).
42 <https://doi.org/10.3389/fphys.2018.01078>
- 43 Messere, A., Tschakovsky, M., Seddone, S., Lulli, G., Franco, W., Maffiodo, D., Ferraresi, C., & Roatta,
44 S. (2018b). Hyper-Oxygenation Attenuates the Rapid Vasodilatory Response to Muscle
45 Contraction and Compression. *Frontiers in Physiology*, 9, 1078.
46 <https://doi.org/10.3389/fphys.2018.01078>
- 47 Montoya, P., Brody, S., Beck, K., Veit, R., & Rau, H. (1997). Differential beta- and alpha-adrenergic
48 activation during psychological stress. *European Journal of Applied Physiology and Occupational*
49 *Physiology*, 75(3), 256–262. <https://doi.org/10.1007/s004210050157>
- 50 Ogata, H., Hobara, H., Uematsu, A., & Ogata, T. (2012). Limb oxygenation during the cold pressor test
51 in spinal cord-injured humans. *Clinical Autonomic Research*, 22(2), 71–78.
52 <https://doi.org/10.1007/s10286-011-0143-5>
- 53 Ogata, H., Yunoki, T., & Yano, T. (2002). Effect of arm cranking on the NIRS-determined blood volume
54 and oxygenation of human inactive and exercising vastus lateralis muscle. *European Journal of*
55 *Applied Physiology*, 86(3), 191–195. <https://doi.org/10.1007/s00421-001-0527-7>
- 56 Österlund, C., Thornell, L. E., & Eriksson, P. O. (2011). Differences in fibre type composition between
57 human masseter and biceps muscles in young and adults reveal unique masseter fibre type
58 growth pattern. *Anatomical Record*, 294(7), 1158–1169. <https://doi.org/10.1002/ar.21272>
- 59 Pacák, K., & Palkovits, M. (2001). Stressor specificity of central neuroendocrine responses: implications
60
61
62
63
64
65



for stress-related disorders. *Endocrine Reviews*, 22(4), 502–548.
<https://doi.org/10.1210/edrv.22.4.0436>

- 1
2 Passatore, M., & Roatta, S. (2006). Influence of sympathetic nervous system on sensorimotor function:
3 whiplash associated disorders (WAD) as a model. *European Journal of Applied Physiology*, 98(5),
4 423–449. <https://doi.org/10.1007/s00421-006-0312-8>
- 5 Queme, L. F., Ross, J. L., & Jankowski, M. P. (2017). Peripheral mechanisms of ischemic Myalgia.
6 *Frontiers in Cellular Neuroscience*, 11, 1–15. <https://doi.org/10.3389/fncel.2017.00419>
- 7 Reis, D. J., Ruggiero, D. A., & Morrison, S. F. (1989). The C1 area of rostral ventrolateral medulla: A
8 central site integrating autonomic responses to hemorrhage. *Resuscitation*, 18(2–3), 269–288.
9 [https://doi.org/10.1016/0300-9572\(89\)90028-2](https://doi.org/10.1016/0300-9572(89)90028-2)
- 10 Roatta, S., Mohammed, M., & Passatore, M. (2009). Acute stress reduces blood flow in the orofacial
11 area, in conscious rabbits. *Archives of Oral Biology*, 54(4), 380–388.
12 <https://doi.org/10.1016/j.archoralbio.2009.01.003>
- 13 Roatta, S., Mohammed, M., & Passatore, M. (2011). Detecting activation of the sympatho-adrenal axis
14 from haemodynamic recordings, in conscious rabbits exposed to acute stress. *Acta Physiologica*
15 (*Oxf*), 201(3), 323–337. <https://doi.org/10.1111/j.1748-1716.2010.02179.x>
- 16 Rusch, N. J., Shepherd, J. T., Webb, R. C., & Vanhoutte, P. M. (1981). Different behavior of the
17 resistance vessels of the human calf and forearm during contralateral isometric exercise, mental
18 stress, and abnormal respiratory movements. *Circulation Research*, 48(6 Pt 2), 1118-30.
19 <https://pubmed.ncbi.nlm.nih.gov/7226455/>
- 20 Sanders, J. S., Mark, A. L., & Ferguson, D. W. (1989). Evidence for cholinergically mediated
21 vasodilation at the beginning of isometric exercise in humans. *Circulation*, 79(4), 815–824.
22 <https://doi.org/10.1161/01.CIR.79.4.815>
- 23 Seals, D. R. (1991). Sympathetic neural adjustments to stress in physically trained and untrained
24 humans. *Hypertension*, 17(1), 36–43. <https://doi.org/10.1161/01.hyp.17.1.36>
- 25 Shevel, E. (2011). The extracranial vascular theory of migraine: A great story confirmed by the facts.
26 *Headache*, 51(3), 409–417. <https://doi.org/10.1111/j.1526-4610.2011.01844.x>
- 27 Simons, D. G., & Mense, S. (1998). Understanding and measurement of muscle tone as related to
28 clinical muscle pain. *Pain*, 75(1), 1–17. [https://doi.org/10.1016/S0304-3959\(97\)00102-4](https://doi.org/10.1016/S0304-3959(97)00102-4)
- 29 Sjøgaard, G., Lundberg, U., & Kadefors, R. (2000). The role of muscle activity and mental load in the
30 development of pain and degenerative processes at the muscle cell level during computer work.
31 *European Journal of Applied Physiology*, 83(2–3), 99–105.
32 <https://doi.org/10.1007/s004210000285>
- 33 Stål, P., Eriksson, P. O., & Thornell, L. E. (1996). Differences in capillary supply between human oro-
34 facial, masticatory and limb muscles. *Journal of Muscle Research and Cell Motility*, 17(2), 183–
35 197. <https://doi.org/10.1007/BF00124241>
- 36 Tanosoto, T., Taro Arima, A. T., Ohata, N., & Svensson, P. (2012). A Paced Auditory Serial Addition
37 Task evokes stress and differential effects on masseter-muscle activity and haemodynamics.
38 *European Journal of Oral Sciences*, 120(4), 363–367. <https://doi.org/10.1111/j.1600-0722.2012.00973.x>
- 39 Terakawa, Y., & Ichinohe, T. (2012). Large-dose epinephrine reduces skeletal muscle blood flow under
40 general anesthesia in rabbits. *Anesthesia Progress*, 59(3), 118–122. <https://doi.org/10.2344/12-00006.1>
- 41 Testa, M., Marco, A. Di, Pertusio, R., Roy, P. Van, Cattrysse, E., & Roatta, S. (2016). A validation study
42 of a new instrument for low cost bite force measurement. *Journal of Electromyography and*
43 *Kinesiology*, 30, 243–248. <https://doi.org/10.1016/j.jelekin.2016.08.005>
- 44 Tew, G. A., Ruddock, A. D., & Saxton, J. M. (2010). Skin blood flow differentially affects near-infrared
45 spectroscopy-derived measures of muscle oxygen saturation and blood volume at rest and during
46 dynamic leg exercise. *European Journal of Applied Physiology*, 110(5), 1083–1089.
47 <https://doi.org/10.1007/s00421-010-1596-2>
- 48 Tidgren, B., & Hjemdahl, P. (1989). Renal responses to mental stress and epinephrine in humans.
49 *American Journal of Physiology - Renal Fluid and Electrolyte Physiology*, 257(4 (26/4)).
50 <https://doi.org/10.1152/ajprenal.1989.257.4.f682>
- 51 Vassend, O., & Knardahl, S. (2005). Personality, affective response, and facial blood flow during brief
52 cognitive tasks. *International Journal of Psychophysiology*, 55(3), 265–278.
53 <https://doi.org/10.1016/j.ijpsycho.2004.08.005>
- 54 Vissing, S. F. (1997). Differential activation of sympathetic discharge to skin and skeletal muscle in
55 humans. *Acta Physiol Scand Suppl.*, 639, 1–32. <https://pubmed.ncbi.nlm.nih.gov/9421582/>
- 56 Wray, D. W., Donato, A. J., Nishiyama, S. K., & Richardson, R. S. (2007). Acute sympathetic
57 vasoconstriction at rest and during dynamic exercise in cyclists and sedentary humans. *Journal*
58
59
60
61
62
63
64
65



of Applied Physiology, 102(2), 704–712. <https://doi.org/10.1152/jappphysiol.00984.2006>

1
2
3
4
5
6
7
8
9
10
11
12
13
14
15
16
17
18
19
20
21
22
23
24
25
26
27
28
29
30
31
32
33
34
35
36
37
38
39
40
41
42
43
44
45
46
47
48
49
50
51
52
53
54
55
56
57
58
59
60
61
62
63
64
65



FIGURE LEGENDS

1 **Fig. 1.** Original recordings from a representative subject during the cold pressor test
2 (CPT) (A) and in response to voluntary isometric contractions of the masseter and the
3 biceps muscles (B). Note that EMG recordings, which are magnified in A compared to
4 B, effectively reveal even the smallest involuntary contractions, e.g., after the end of
5 the CPT in the masseter muscle (black arrows, A) and that stronger contractions (black
6 arrows, B) may produce visible hemodynamic changes in NIRS variables. Vertical
7 dotted lines indicate start and end of CPT. ABP: arterial blood pressure, TOI: tissue
8 oxygenation index, THI: total hemoglobin index (a.u.: arbitrary units),
9 electromyograms from masseter and biceps muscles: EMGm and EMGb, respectively.

10 **Fig. 2.** Response to cold pressor test (CPT). Average response curves (A) and
11 average effects (B) for the different variables. THI: total hemoglobin index (a.u.:
12 arbitrary units); TOI: tissue oxygenation index; HR: heart rate; ABP: arterial blood
13 pressure; CO: cardiac output. The black bar at the bottom indicates the duration of the
14 CPT. Note the opposite effects on TOI and THI exhibited by the masseter and the
15 biceps muscles. *) $p < 0.05$; $n = 12$.

16 **Fig. 3.** Response to mental arithmetic test (MAT). Average response curves (A) and
17 average effects (B) for the different variables. Abbreviations as in Figure 1. The black
18 bar at the bottom indicates the duration of the MAT. *) $p < 0.05$; $n = 12$.

19 **Fig. 4.** Response to apnea (AP). Average response curves (A) and average effects
20 (B) for the different variables. Abbreviations as in Figure 1. Duration of apnea lasted
21 between 40 s (black bar) and 120 s (gray bar), in the different subjects; $n = 12$.

22 **Fig. 5.** Response to isometric handgrip (IHG) and post-handgrip muscle ischemia
23 (PHGMI). Average response curves (A); average effects of IHG (B) and PHGMI (C)
24 for the different variables. Abbreviations as in Figure 1. The black and grey bars at the
25 bottom indicates the duration of IHG and PHGMI, respectively. Note that TOI exhibits
26 opposite effects in masseter and biceps muscles during PHGMI but not during IHG. *)
27 $p < 0.05$; $n = 12$.

28
29
30
31
32
33
34
35
36
37
38
39
40
41
42
43
44
45
46
47
48
49
50
51
52
53
54
55
56
57
58
59
60
61
62
63
64
65

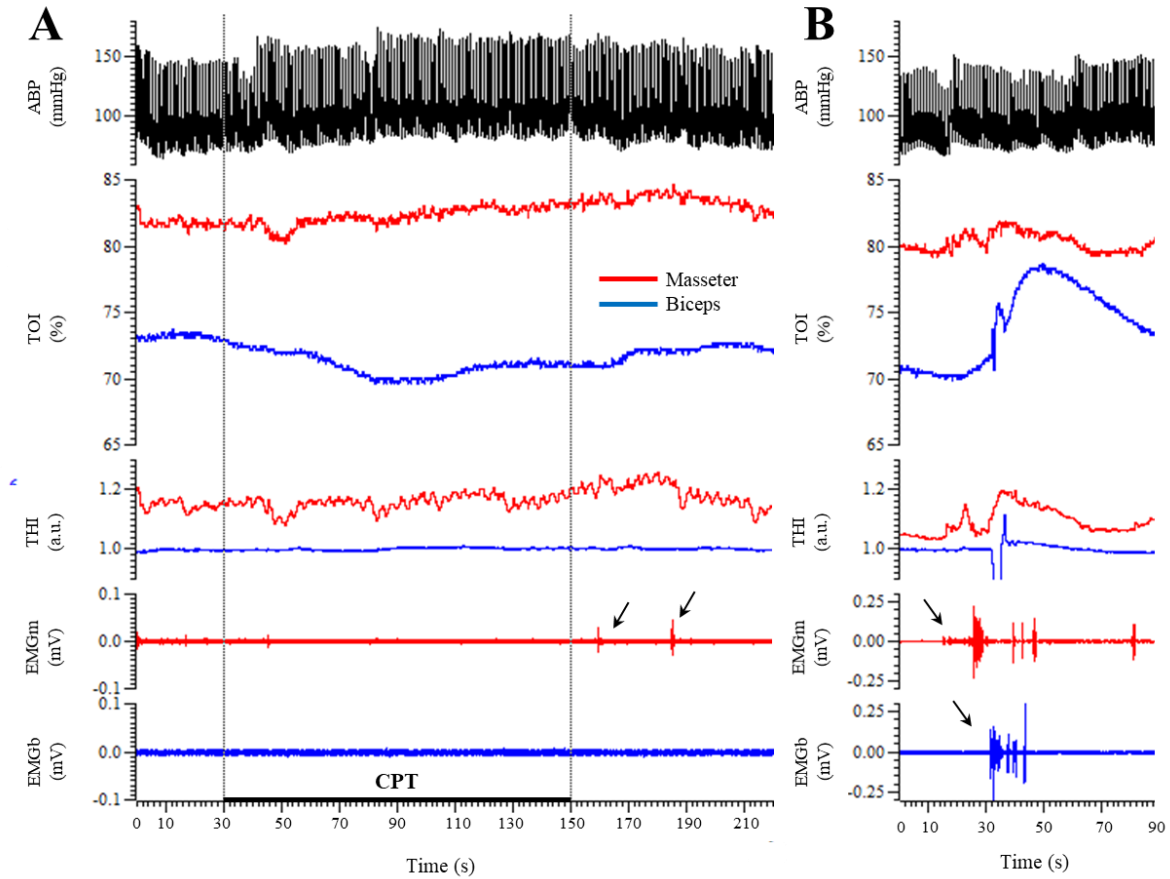


Fig. 1. Original recordings from a representative subject during the cold pressor test (CPT) (A) and in response to voluntary isometric contractions of the masseter and the biceps muscles (B). Note that EMG recordings, which are magnified in A compared to B, effectively reveal even the smallest involuntary contractions, e.g., after the end of the CPT in the masseter muscle (black arrows, A) and that stronger contractions (black arrows, B) may produce visible hemodynamic changes in NIRS variables. Vertical dotted lines indicate start and end of CPT. ABP: arterial blood pressure, TOI: tissue oxygenation index, THI: total hemoglobin index (a.u.: arbitrary units), electromyograms from masseter and biceps muscles: EMGm and EMGb, respectively.

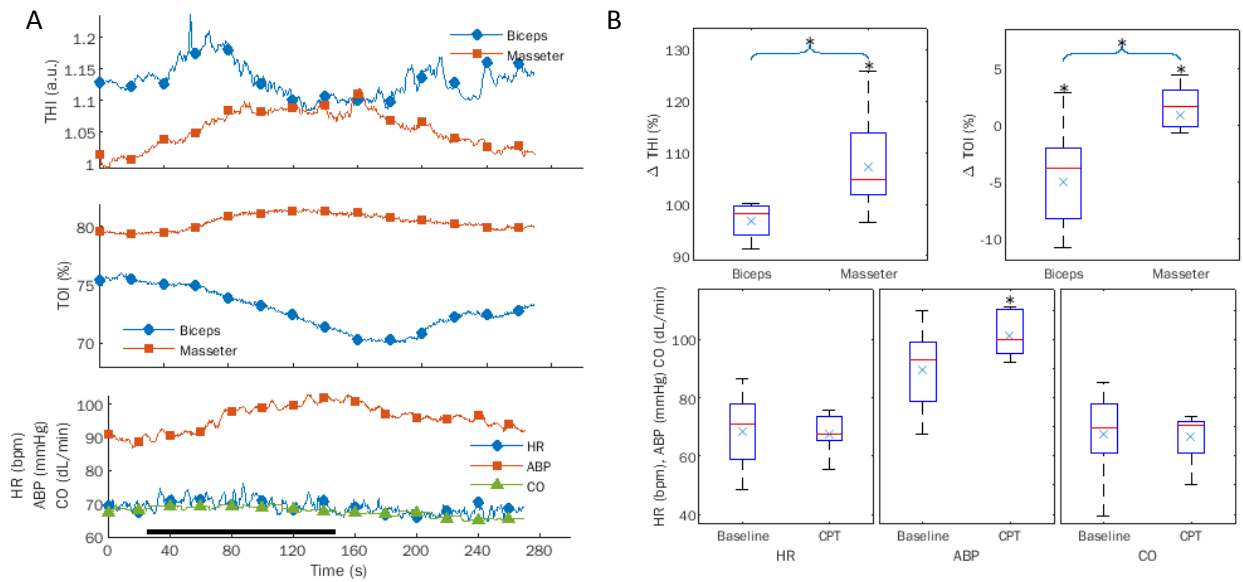


Fig. 2. Response to cold pressor test (CPT). Average response curves (A) and average effects (B) for the different variables. THI: total hemoglobin index (a.u.: arbitrary units); TOI: tissue oxygenation index; HR: heart rate; ABP: arterial blood pressure; CO: cardiac output. The black bar at the bottom indicates the duration of the CPT. Note the opposite effects on TOI and THI exhibited by the masseter and the biceps muscles. *) $p < 0.05$; $n = 12$.

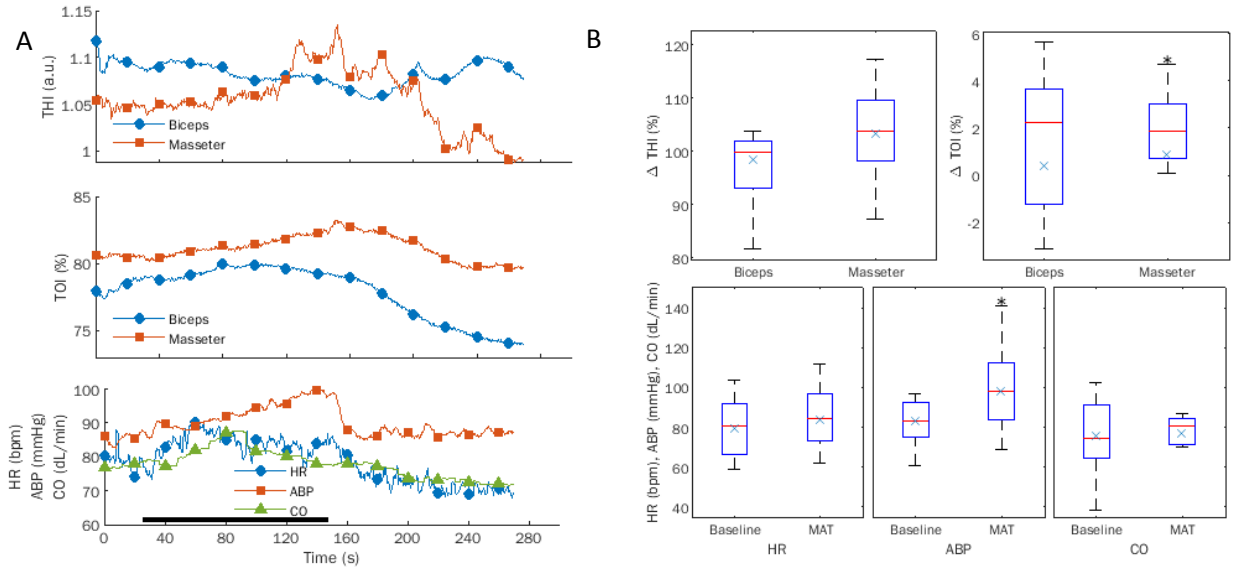


Fig. 3. Response to mental arithmetic test (MAT). Average response curves (A) and average effects (B) for the different variables. Abbreviations as in Figure 1. The black bar at the bottom indicates the duration of the MAT. *) $p < 0.05$; $n = 12$.

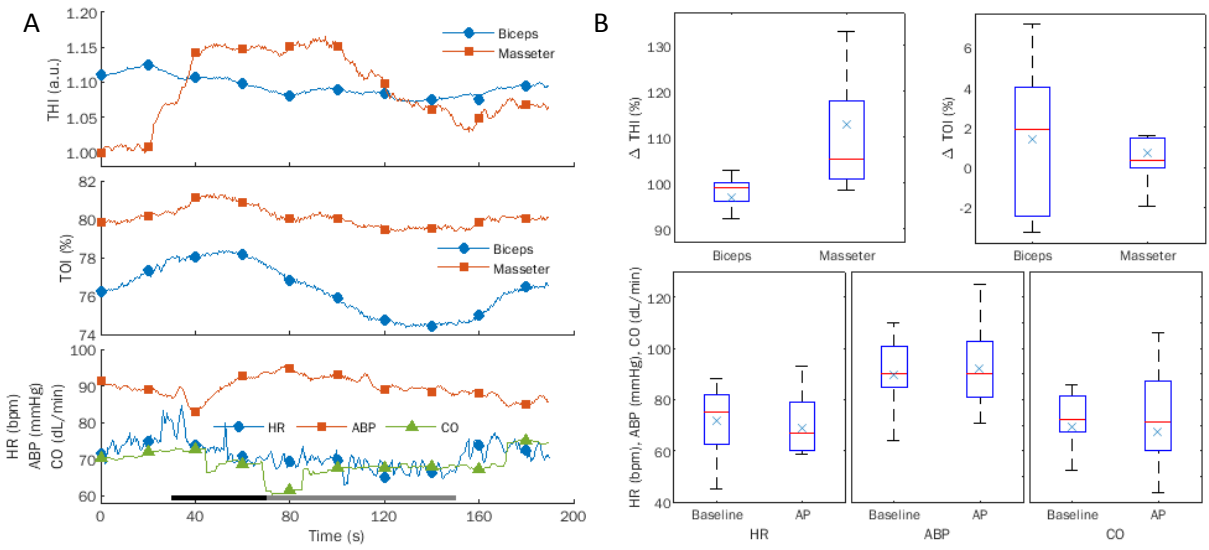


Fig. 4. Response to apnea (AP). Average response curves (A) and average effects (B) for the different variables. Abbreviations as in Figure 1. Duration of apnea lasted between 40 s (black bar) and 120 s (gray bar), in the different subjects; n=12.

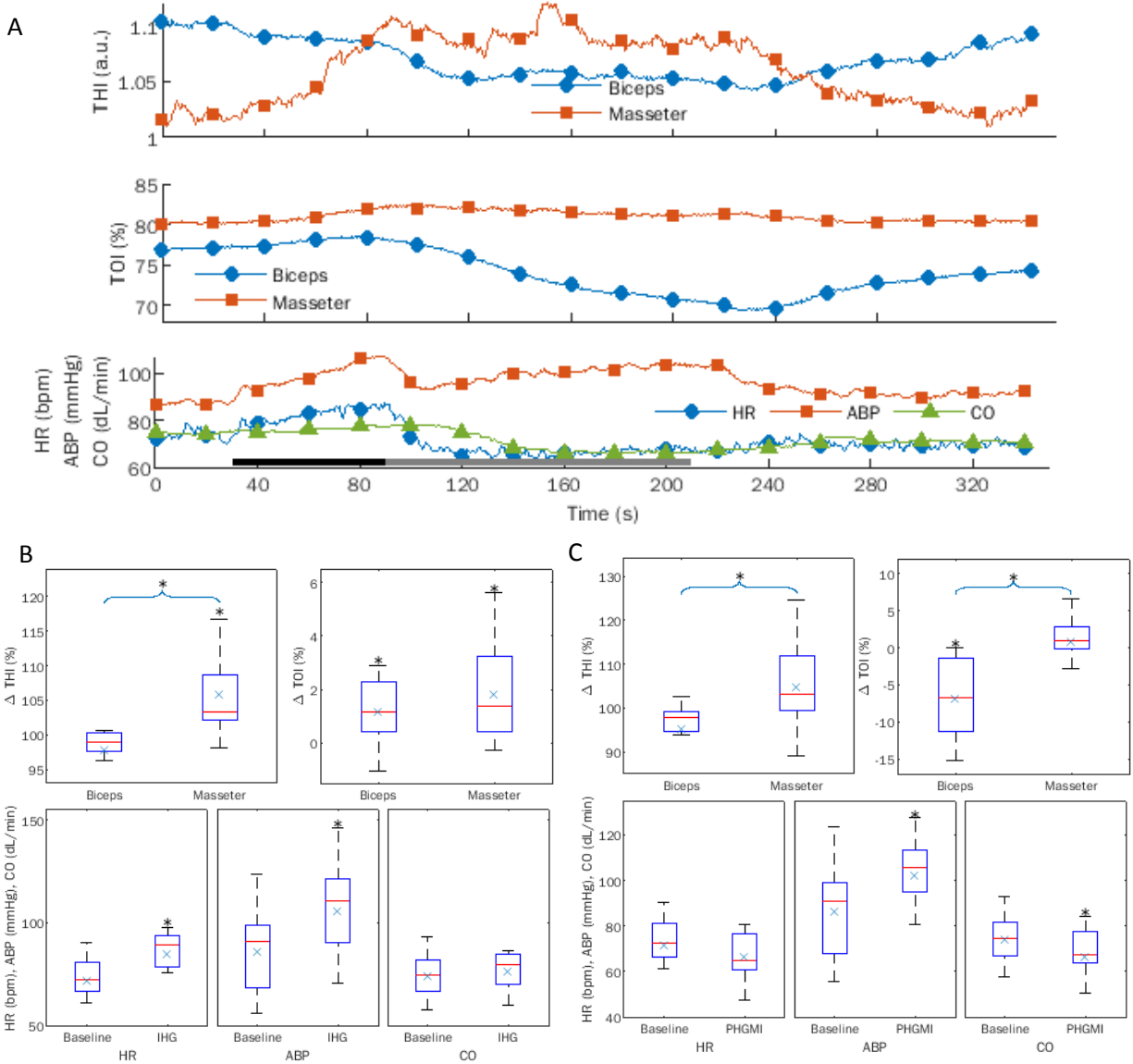
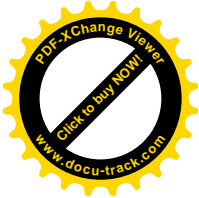
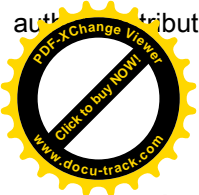


Fig. 5. Response to isometric handgrip (IHG) and post-handgrip muscle ischemia (PHGMI). Average response curves (A); average effects of IHG (B) and PHGMI (C) for the different variables. Abbreviations as in Figure 1. The black and grey bars at the bottom indicate the duration of IHG and PHGMI, respectively. Note that TOI exhibits opposite effects in masseter and biceps muscles during PHGMI but not during IHG. *) $p < 0.05$; $n = 12$.



Conflict of interest

The authors declare no conflict of interest.



Authors' contributions

Not required when authors number is less than 4