
MYCOTAXON

<http://dx.doi.org/10.5248/117.37>

Volume 117, pp. 37–43

July–September 2011

Additional records of *Volvariella dunensis* (Basidiomycota, Agaricales): morphological and molecular characterization

ALFREDO VIZZINI^{1*}, MARCO CONTU² & ALFREDO JUSTO³

¹*Dipartimento di Biologia Vegetale – Università degli Studi di Torino,
Viale Mattioli 25, I-10125, Torino, Italy*

²*Via Marmilla, 12 (I Gioielli 2), I-07026 Olbia (OT), Italy*

³*Biology Department, Clark University, 950 Main St., Worcester, MA 01610 USA*

*CORRESPONDENCE TO: alfredo.vizzini@unito.it

ABSTRACT — Collections morphologically assignable to *Volvariella dunensis* from Sardinia and the Atlantic coast of Spain were revised and compared with the original collections. Molecular data supporting all examined collections as *V. dunensis* expand its known geographic distribution. A revised morphological characterization and a phylogenetic analysis of all *Volvariella* species sequenced to date are provided.

KEY WORDS — *Agaricomycetes*, ITS, phylogeny, *Volvariella volvacea*

Introduction

The genus *Volvariella* Speg., which is composed of saprotrophic or mycotrophic agarics, has been historically considered a member of the family *Pluteaceae* Kotl. & Pouzar (Singer 1986). The genus is characterized macroscopically by a pink spore-print, free lamellae, and a universal veil that forms a saccate volva at the base of the stipe and microscopically by the inverse hymenophoral trama (Singer 1986). Results from earlier molecular studies (Moncalvo et al. 2002, Matheny et al. 2006) led to questions about its monophyly and phylogenetic position in the *Pluteaceae*. More recent research focused on the *Pluteaceae* (Justo et al. 2011) showed that *Volvariella* is polyphyletic with two major clades. The large-spored, viscid species belonging to the *V. gloiocephala* complex were resolved as the sister group of *Pluteus* Fr. and accommodated under the new generic name *Volvopluteus* Vizzini et al. *Volvariella*, the remaining clade, is therefore restricted to the dry, small-spored species. *Volvariella* falls outside the pluteoid clade and based on data from ribosomal loci (nSSU, 5.8S, nLSU) shows affinities to some hygrophoroid

genera (*Cuphophyllus* (Donk) Bon, *Cantharocybe* H.E. Bigelow & A.H. Sm.), but its phylogenetic position within the *Agaricales* is still unclear.

Volvariella dunensis has been the subject of a detailed taxonomic study based on the re-examination of the original collections from the Mediterranean coast of Spain (Justo & Castro 2010). Very recently, a collection assignable to *V. dunensis* was reported from the Atlantic coast of Spain (Fernández-Sasia 2010 as “*Volvariella nigrovolvacea* var. *dunensis*”). Also, the identity of the Sardinian collection reported by Contu & La Rocca (1999) as *Volvariella nigrovolvacea* Kosina was recently questioned (Justo & Castro 2010), and it comes close to the morphological concept of *V. dunensis*.

The purpose of this study was to determine whether the collections reported by Fernández-Sasia (2010) and Contu & La Rocca (1999) represent *V. dunensis* using both morphological and molecular characters (ITS region).

Materials & methods

Morphology

Descriptive terminology follows Vellinga (1988) and Boekhout (1990). Microscopical preparations from dried material were mounted in Congo Red and 5% KOH. The following abbreviations are used in text: avl for average length, avw for average width, Q for quotient of length and width and avQ for average quotient. Extreme measurements are indicated within parentheses. Herbarium acronyms follow Thiers (2011) except that “SCM” is used for the “Societat Catalana de Micologia” herbarium and RFS refers to the personal herbarium of Roberto Fernández-Sasia.

Molecular analysis

Standard methods for DNA extraction, PCR amplification and DNA sequencing were applied (e.g. Justo et al. 2011). Primer pairs ITS1F and ITS4 (Gardes & Bruns 1993) were used for both PCR and sequencing. Complete information about the collections of *Volvariella* that were sequenced is given in TAB. 1. The remaining sequences used in the analysis were retrieved from GenBank and come from the studies of Menolli & Capelari (2008), Li et al. (2009) and Justo et al. (2011). GenBank accession numbers are given in FIG. 2. No suitable outgroup for *Volvariella* was found using BLAST searches (<http://blast.ncbi.nlm.nih.gov/Blast.cgi>). Therefore, after running a preliminary analysis using *Coprinus comatus* (O.F. Müll.) Pers. as an outgroup for all *Volvariella* sequences and taking into consideration the results from the combined nLSU-5.8S-nSSU analyses of Justo et al. (2011), *V. bombycina* (Schaeff.) Singer and *V. volvacea* (Bull.) Singer were used as outgroup taxa in the final dataset. These two species appear to be the sister-group to all other species of *Volvariella* sequenced to date. Sequences were aligned with MAFFT (Kato et al. 2002) using the Q-INS-i strategy. The alignment was examined and manually corrected in MacClade 4.05 (Maddison & Maddison 2002). It has been deposited in TreeBASE (<http://purl.org/phylo/treebase/phyloWS/study/TB2:S11441>). Pairwise similarities were calculated using Jalview (Waterhouse et al. 2009). A Maximum Likelihood analysis was run in RAXML servers (Stamatakis et al. 2008) with 100 rapid bootstrap replicates.

TABLE 1. *Volvariella* samples newly sequenced in this study.

SPECIES	COUNTRY— LOCATION	COLLECTOR; SAMPLING DATE [herb. number]	HABITAT
<i>V. dunensis</i> (Vila et al. 1999, Justo & Castro 2010)	Spain— Barcelona, El Prat de Llobregat, El Pinar	F. Àngel; 08.II.1997 [SCM 3513]	Open dunes
<i>V. dunensis</i> (Fernández-Sasia 2010)	Spain— Bizkaia, Muskiz	R. Fernández-Sasia; 10.III.2007 [RFS 070310-03]	Dunes with <i>Tamarix gallica</i> & <i>Carpobrotus edulis</i>
<i>V. dunensis</i> (Contu & La Rocca 1999 as <i>V. nigrovolvacea</i>)	Italy— Sardinia, prov. Cagliari, Chia	M. Contu; 26.XII.1997 [TO-AV140]	Sand dune in <i>Juniperus phoenicea</i> debris; among <i>Pistacia lentiscus</i> , <i>J. phoenicea</i> , <i>J. oxycedrus</i>
<i>V. hypopithys</i> (Fr.) Shaffer	Italy— Stazzo Montesu, Olbia-Tempio	M. Contu; 26.XI.2002 [TO-AV137]	Under <i>Quercus suber</i>
<i>V. pusilla</i> (Pers.) Singer	Spain— Asturias, Endriza	R. Picón; 5.X.2005 [AJ51 (LOU)]	Among grasses
<i>V. pusilla</i>	Italy— Oschiri, Olbia-Tempio	M. Contu; 11.XI.2000 [TO-AV139]	Among grasses
<i>V. strangulata</i> (Romagn.) Vizzini & Contu	Italy— Emilia Romagna	L. Setti; — [TO-AV141]	Not recorded
<i>V. terrea</i>	France— Rixheim	E. Musumeci; 01.X.2005 [LUG 11010, holotypus]	Under <i>Carpinus betulus</i> near <i>Agaricus xanthodermus</i>
<i>Volvariella</i> sp.	Spain— Madrid, Parque del Oeste	L.A. Parra; 6.VIII.2005 [LOU 18294]	Among <i>Cedrus atlantica</i> remnants
<i>Volvariella</i> sp.	Slovenia— Tolminski, Tolmin	J. Kavcic; 12.VII.2007 [TO-AV143]	Under <i>Fagus sylvatica</i> and <i>Fraxinus</i> sp.

Taxonomy

ITS sequences from the collections TO-AV140 (Sardinia) and RFS 070310-03 (Atlantic coast of Spain) are 99.5% and 100% identical to the ITS of SCM 3513 (Mediterranean coast of Spain), respectively. All collections are therefore considered to represent *V. dunensis*.

Macromorphological differences between the Sardinian and Atlantic collections with respect to the original collections of *V. dunensis* are subtle, but they concern characters commonly used to delimitate species in *Volvariella* such as pileus diameter, stipe colour and volva morphology and colour. Variation in



FIGURE 1. *Volvariella dunensis*. Basidiomes (Sardinia, Italy, TO AV140). Bar = 50 mm.

microscopical characters is also subtle and mainly concerns size and shape of basidiospores and cystidia. Here we provide a revised description of *V. dunensis* based on all the collections known so far, highlighting only those characters that differ from the description provided in Justo & Castro (2010).

Volvariella dunensis (Vila, Àngel & Llimona) Justo & M.L. Castro,
Mycotaxon 112: 262. 2010.

FIG. 1

= *Volvariella nigrovolvacea* var. *dunensis* Vila, Àngel & Llimona,
Revista Catalana de Micologia 22: 131. 1999.

PILEUS diameter 15–100 mm. STIPE surface white to grey (similar to pileus colour). VOLVA white to externally dark sepia to brownish-black, entire or lobate. BASIDIOSPORES (6–)6.5–9.0 × 4.5–6(–6.7) μm , $\text{avl} \times \text{avw} = 7.5\text{--}7.9 \times 5.1\text{--}5.5 \mu\text{m}$, $Q = (1.15\text{--})1.3\text{--}1.7(\text{--}1.8)$, $\text{av}Q = 1.4\text{--}1.55$, ellipsoid to oblong, rarely broadly ellipsoid. PLEUROCYSTIDIA (34–)40–95(–112) × 13.5–45(–50) μm , clavate, (narrowly) utriform, obovoid, more rarely broadly lageniform or fusiform; colourless; with thin, smooth walls, a few with a slightly thickened wall (up to 0.8 μm thick). CHEILOCYSTIDIA 20–80(–120) × 15–60 μm , clavate, utriform, fusiform or lanceolate, without apical appendages, colourless; with thin, smooth walls, a few with a slightly thickened wall (up to 0.8 μm thick). CAULOCYSTIDIA only observed in the original collections, absent in TO-AV140 and RFS 070310-03.

HABIT, HABITAT AND DISTRIBUTION — Gregarious, usually with most of the basidiomes growing deeply buried in the sand. In coastal dunes. Known from the Mediterranean basin (NE Spain, Sardinia) and the Atlantic coast of Spain.

Trophic strategy

Litter saprotroph ■

Lignicolous □

Mycotrophic on *Clitocybe nebularis* ★

Mycotrophic (?) on *Agaricus xanthodermus* (Musumeci & Riva 2007) ☆

Pileus color

White ○

Grey or Grey-Brown ●

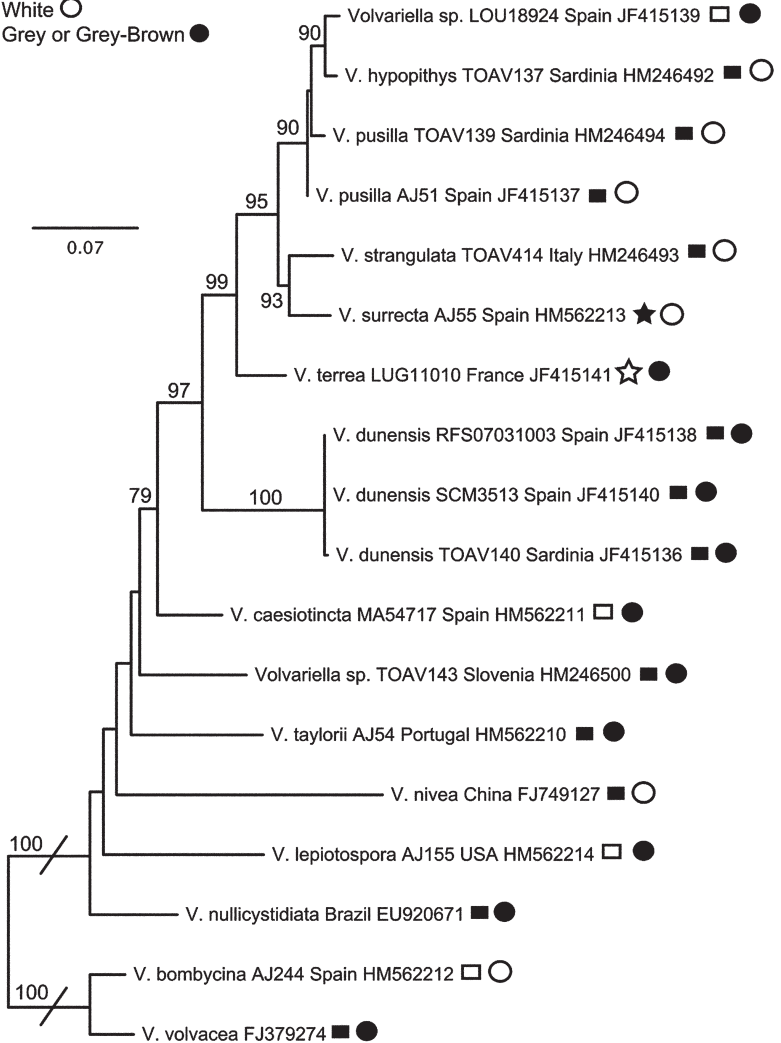


FIGURE 2. Best tree from the Maximum Likelihood analysis of ITS sequences of *Volvariella*. Bootstrap values above 70% are indicated on the branches. The root length has been reduced to facilitate graphical representation. Scale bar value indicates nucleotide substitutions/site.

PHENOLOGY — *Volvariella dunensis* seems to have a relatively narrow and particular time of fructification during the winter, spanning from the last days of December (Sardinia) to early March (Atlantic coast of Spain).

COMMENTS—The arenicolous habitat, winter fructification, and cystidial size and morphology are the key characters for separating *V. dunensis* from other species with grey-fibrillose pilei, especially *V. volvacea*. Courtecuisse (1984) reports that *V. volvacea* could be collected “au niveau des dunes” in the Atlantic coast of France, and Bon & Gehu (1973) signal this species as typical of the *Ammophiletea* communities. In the UK (Orton 1986), Netherlands (Boekhout 1990), and Spain (Justo & Castro 2010), *V. volvacea* has been consistently reported as growing inside greenhouses or outside on organic rich substrates (leaves, compost, sawdust). Given the external resemblance of both species it is very likely, in our opinion, that at least some coastal records of *V. volvacea* from France may, in fact, represent *V. dunensis*.

In the phylogenetic analysis, *V. dunensis* appears as sister to the clade containing *V. terrea* Musumeci & A. Riva and the *V. pusilla* group (FIG. 2). Apart from this relationship, the internal nodes of the tree receive generally low support and many species appear on relatively long branches. This is probably a consequence of the high level of divergence in the ITS sequences of *Volvariella*. For instance, the relatively low 62% pairwise similarity between *V. bombycina* and *V. nivea* T.H. Li & Xiang L. Chen could indicate either a high rate of molecular change in the genus or a relatively ancient speciation event.

The number of *Volvariella* taxa and collections sampled for molecular analyses is still insufficient to make broad generalizations about the morphological species-rank taxonomy. However, it seems that many characters traditionally used for grouping species in the genus such as pileus colour (grey-brown vs. white) or trophic strategy (litter saprotroph, lignicolous, mycotrophic) have undergone many transitions during the evolution of *Volvariella* species (see character states on FIG. 2). Additional research using both morphological and molecular data is badly needed to gain further insights in the taxonomy and evolution of the genus.

Acknowledgements

We would like to thank Dr. A.M. Minnis (Beltsville, USA) and Prof. M. Capelari (São Paulo, Brazil) for their pre-submission reviews. Our sincere thanks also to Roberto Fernández-Sasia (RFS), Antoni Sánchez (SCM), and Enzo Musumeci for sending collections of *V. dunensis* and *V. terrea*.

Literature cited

- Boekhout T. 1990. *Volvariella*. Pp. 56–64, in C Bas, ThW Kuyper, ME Noordeloos, EC Vellinga (eds.). *Flora Agaricina Neerlandica* 2. A.A. Balkema, Rotterdam.
- Bon M, Gehu JM. 1973. Unités supérieures de végétation et récoltes mycologiques. *Doc. Mycol.* 2(6): 1–40.

- Contu M, La Rocca S. 1999. Funghi della zona mediterranea insulare italiana (Entità micologiche rare o interessanti dalla zona mediterranea insulare italiana). *Fungi Non Delineati* 9: 1–48.
- Courtecuisse R. 1984. Notes de reconnaissance macroscopique des principales espèces de champignons du Nord de la France, IV: le genre *Volvariella* Spezzazzini. *Bull. Soc. Mycol. Nord* 34: 14–25.
- Fernández-Sasia R. 2010. *Volvariella nigrovolvacea* var. *dunensis*, primera recolecta en el litoral de Bizkaia. *Errotari* 7: 44–47.
- Gardes M, Bruns TD. 1993. ITS primers with enhanced specificity for basidiomycetes—application to the identification of mycorrhizae and rusts. *Mol. Ecol.* 2: 113–118. <http://dx.doi.org/10.1111/j.1365-294X.1993.tb00005.x>
- Justo A, Castro ML. 2010. The genus *Volvariella* in Spain: *V. dunensis* comb. & stat. nov. and observations on *V. earlei*. *Mycotaxon* 112: 261–270. <http://dx.doi.org/10.5248/112.261>
- Justo A, Vizzini A, Minnis AM, Menolli Jr N, Capelari M, Rodriguez O, Malysheva E, Contu M, Ghingone S, Hibbett DS. 2011. Phylogeny of the *Pluteaceae* (*Agaricales*, *Basidiomycota*): taxonomy and character evolution. *Fungal Biology* 115: 1–20. <http://dx.doi.org/10.1016/j.funbio.2010.09.012>
- Katoh K, Misawa K, Kuma K, Miyata T. 2002. MAFFT: a novel method for rapid multiple sequence alignment based on fast Fourier transform. *Nucleic Acid Res.* 30: 3059–3066. <http://dx.doi.org/10.1093/nar/gkf436>
- Li TH, Chen XL, Shen YH, Li T. 2009. A white species of *Volvariella* (*Basidiomycota*, *Agaricales*) from southern China. *Mycotaxon* 109: 255–262. <http://dx.doi.org/10.5248/109.255>
- Maddison DR, Maddison WP. 2002. *MacClade4: analysis of phylogeny and character evolution*. Sinauer Associates, Sunderland, Massachusetts.
- Matheny PB, Curtis JC, Hofstetter V, Aime MC, Moncalvo JM, Ge ZW, Yang ZL, Slot JC, Ammirati JF, Baroni TJ, Bougher NL, Hughes KW, Lodge DJ, Kerrigan RW, Seidl MT, Aanen DK, DeNitis M, Daniele GM, Desjardens DE, Kropp BR, Norvell LL, Parker A, Vellinga EC, Vilgalys R, Hibbett DS. 2006. Major clades of *Agaricales*: a multi-locus phylogenetic overview. *Mycologia* 98: 982–995. <http://dx.doi.org/10.3852/mycologia.98.6.982>
- Menolli Jr N, Capelari M. 2008. Records and two new species of *Volvariella* (*Pluteaceae*, *Agaricales*) from Brazil. *Mycotaxon* 106: 385–398.
- Moncalvo JM, Vilgalys R, Redhead SA, Johnson JE, James TY, Aime MC, Hofstetter V, Verduin SJW, Larsson E, Baroni TJ, Thorn RG, Jacobsson S, Clémenceçon H, Miller OK. 2002. One hundred and seventeen clades of euagarics. *Mol. Phylogenet. Evol.* 23: 357–400. [http://dx.doi.org/10.1016/S1055-7903\(02\)00027-1](http://dx.doi.org/10.1016/S1055-7903(02)00027-1)
- Orton PD. 1986. *British fungus flora, agarics and boleti 4: Pluteaceae: Pluteus and Volvariella*. Royal Botanic Garden, Edinburgh.
- Singer R. 1986. *The Agaricales in modern taxonomy*. 4th ed. Koeltz Scientific Books, Koenigstein.
- Thiers B. 2011. (continuously updated) *Index Herbariorum: A global directory of public herbaria and associated staff*. New York Botanical Garden's Virtual Herbarium. <http://sweetgum.nybg.org/ih/>
- Stamatakis A, Hoover P, Rougemont J. 2008. A rapid bootstrap algorithm for the RAXML Web servers. *Syst. Biol.* 57: 758–771. <http://dx.doi.org/10.1080/10635150802429642>
- Vellinga EC. 1988. Glossary. Pp. 54–64, in C Bas, ThW Kuyper, ME Noordeloos, EC Vellinga (eds.). *Flora Agaricina Neerlandica 1*. A.A. Balkema, Rotterdam.
- Vila J, Angel F, Llimona X. 1999. *Volvariella nigrovolvacea* var. *dunensis* Vila, Angel et Llimona var. nov. *Rev. Catal. Micol.* 22: 131–134.
- Waterhouse AM, Procter JB, Martin DMA, Clamp M, Barton GJ. 2009. Jalview Version 2 – a multiple sequence alignment editor and analysis workbench. *Bioinformatics* 25(9): 1189–1191. <http://dx.doi.org/10.1093/bioinformatics/btp033>