

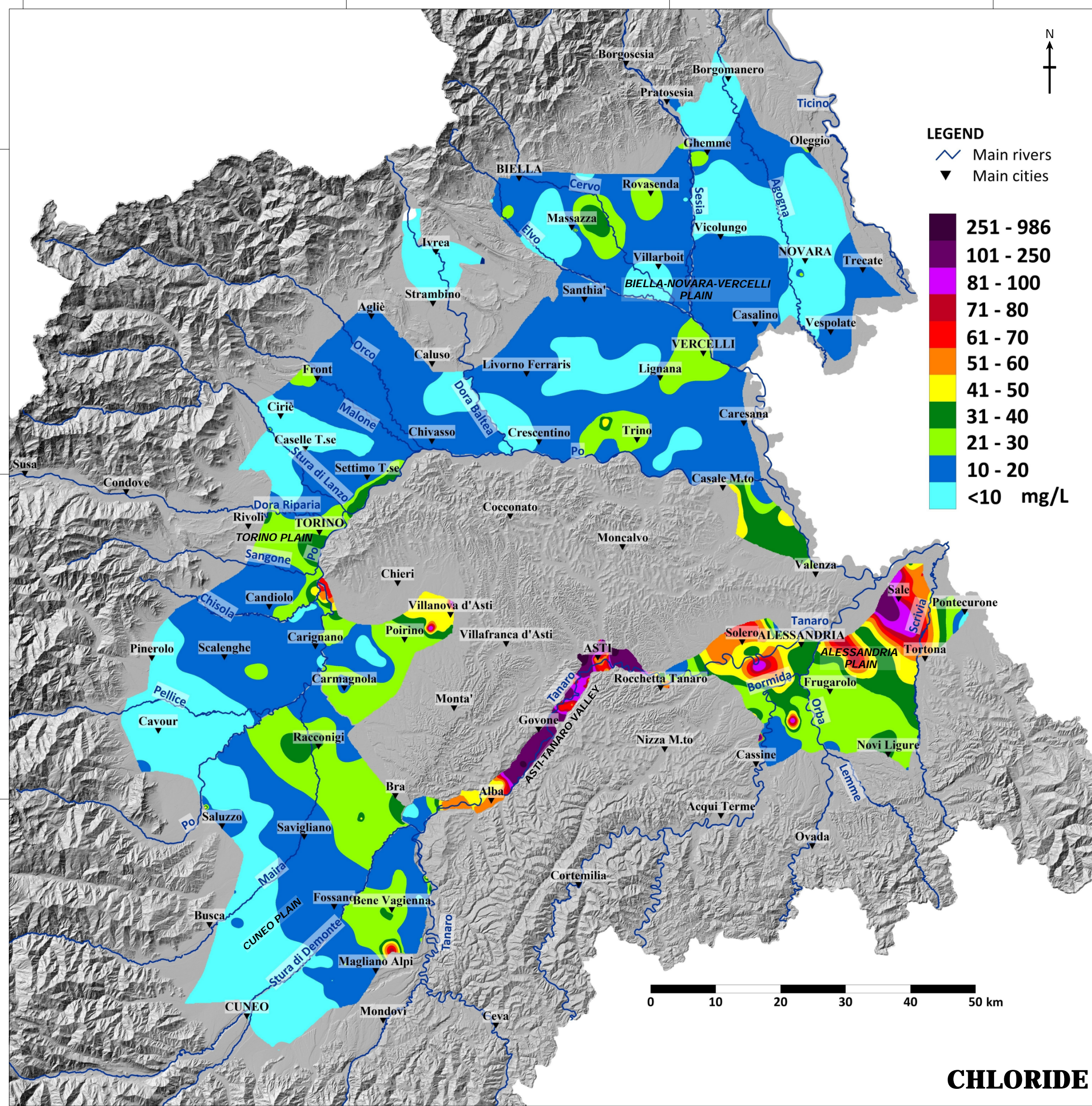
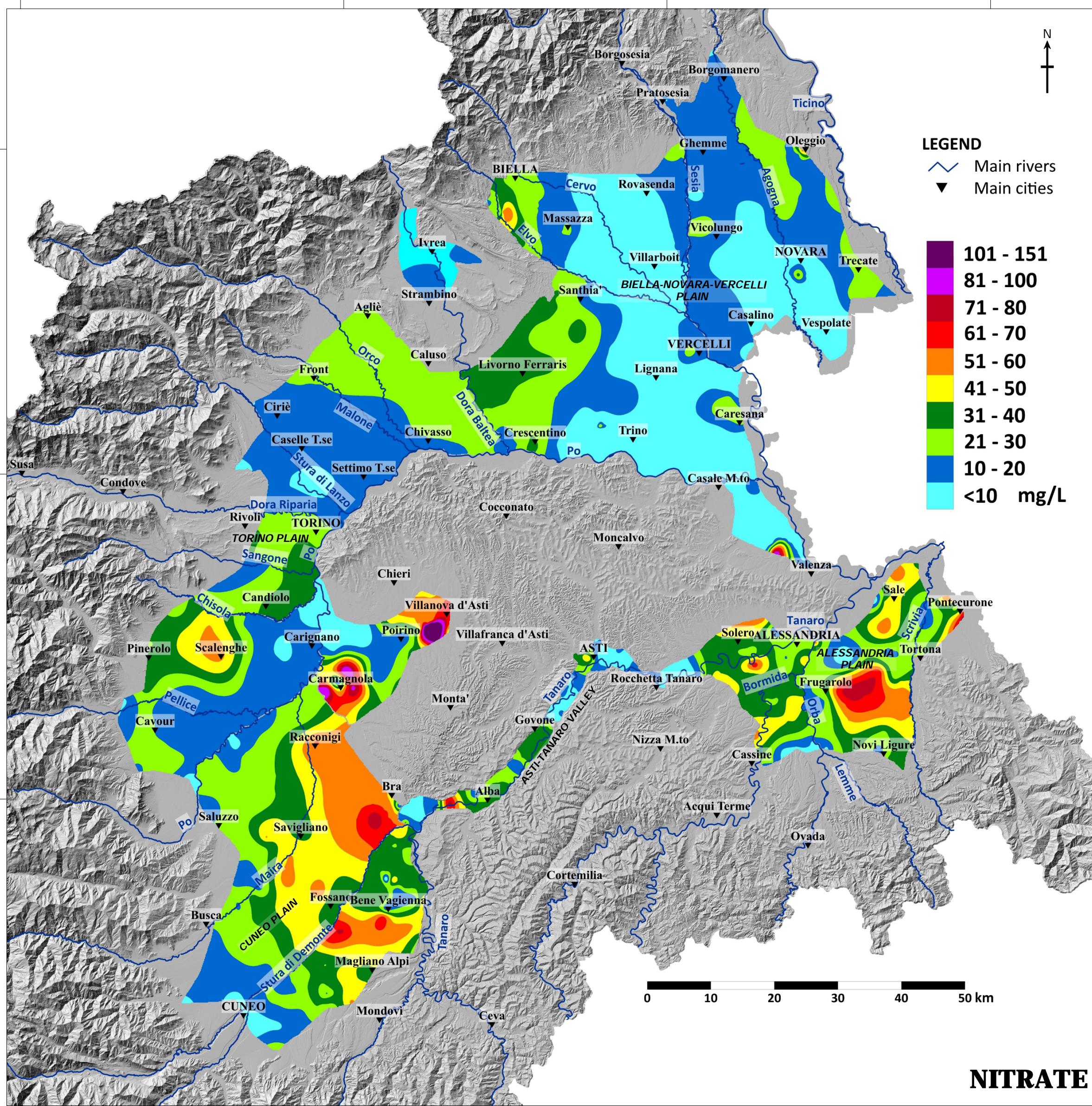
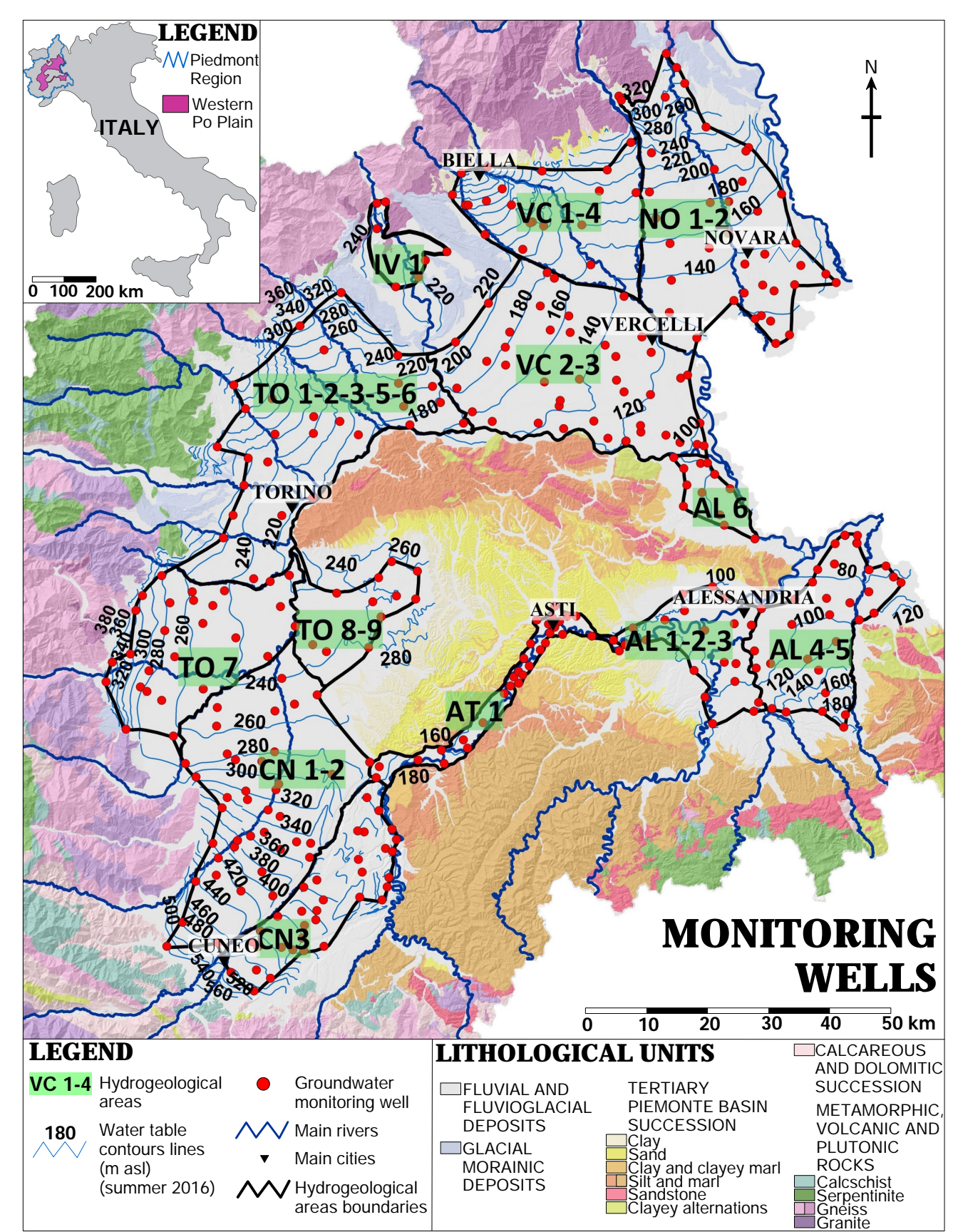
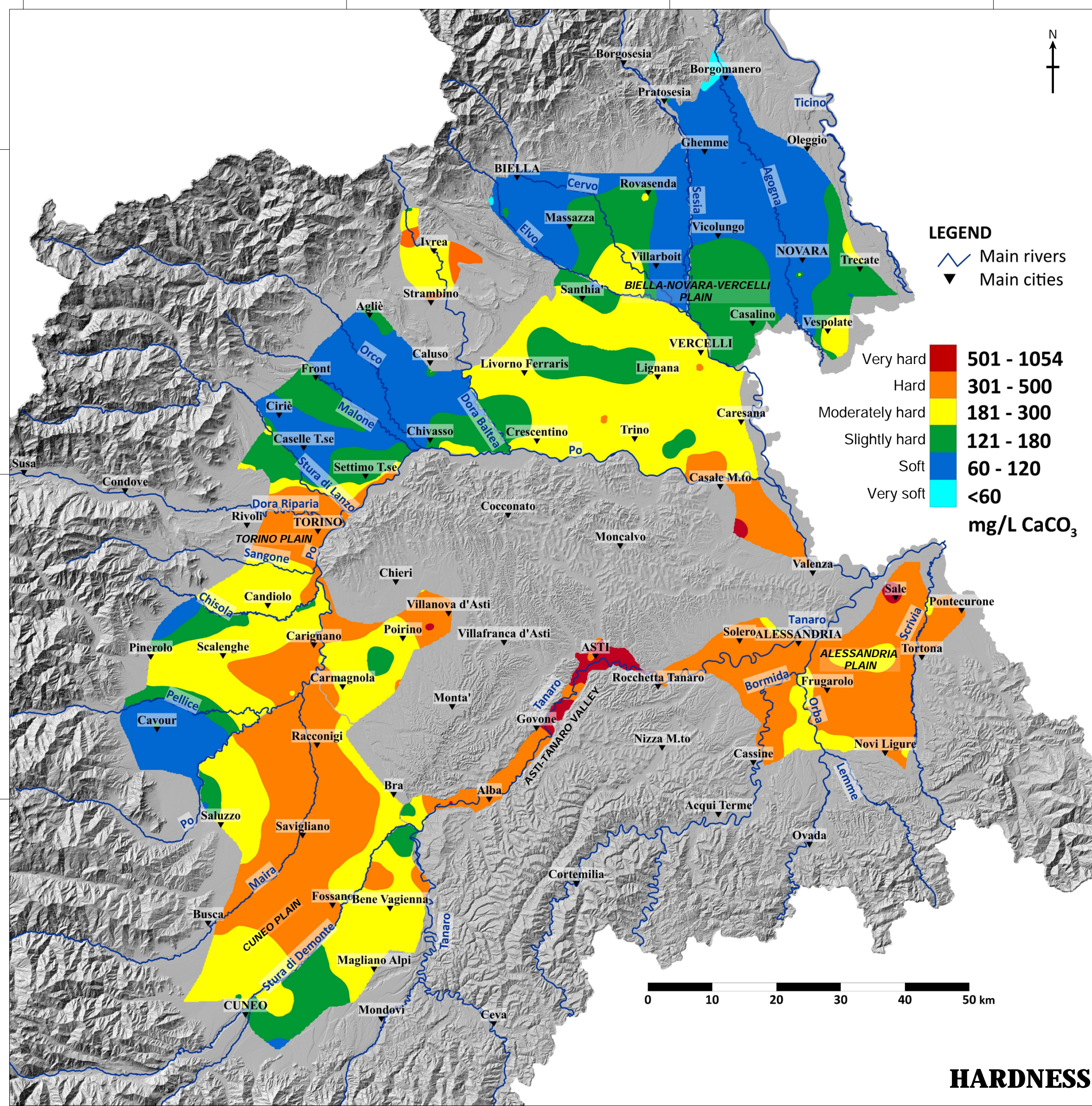
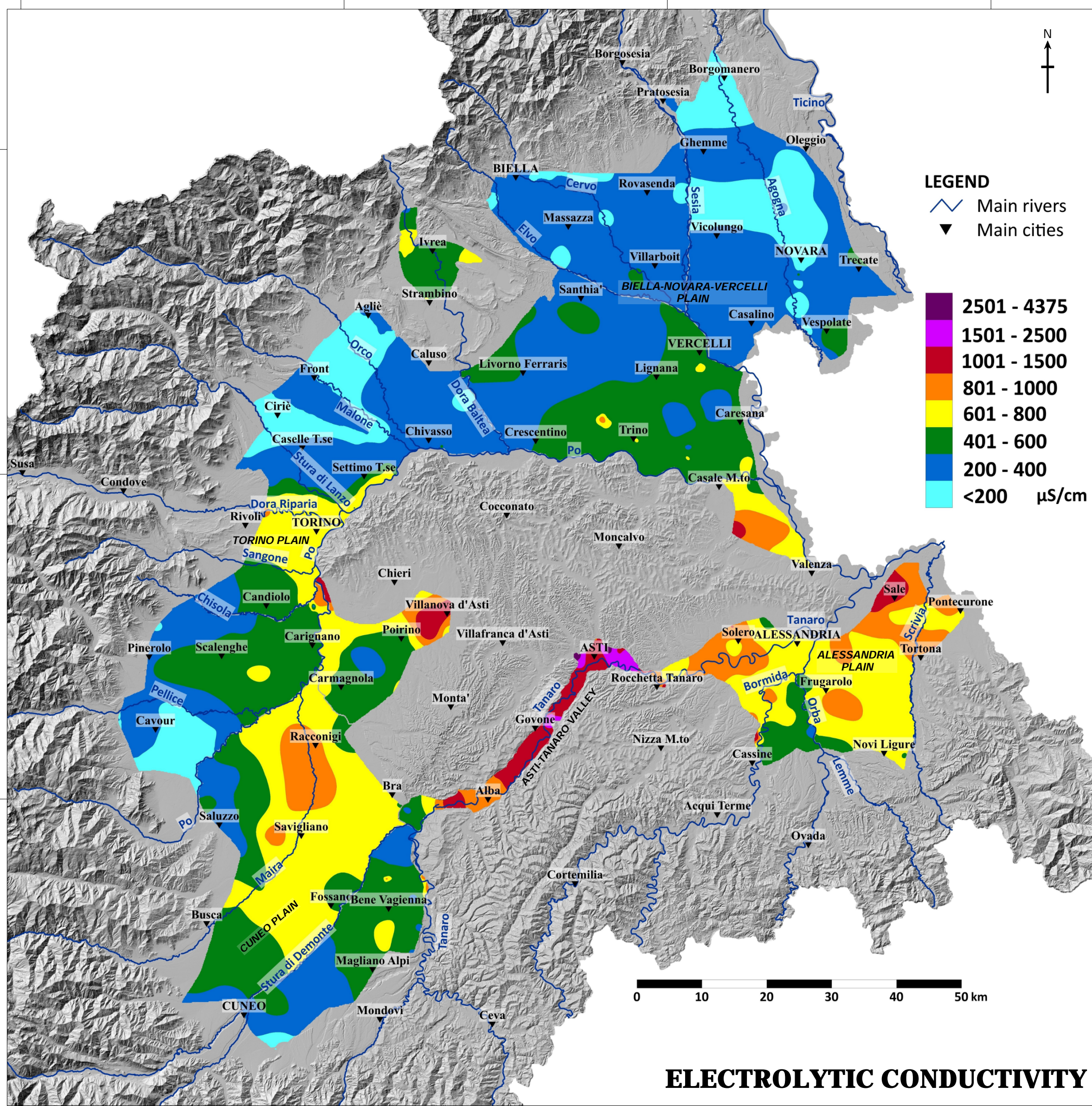
Hydrochemical maps of the shallow aquifer in the western Po Plain (Piedmont, Italy)

Daniele Cocca, Manuela Lasagna, Laura Debernardi, Enrico Destefanis, Domenico Antonio De Luca

University of Turin
 Department of Earth Sciences
 Corresponding author:
 manuela.lasagna@unito.it

Average concentrations period 2015-2020
 Half-year campaigns (wet-dry seasons)
 Chemical analysis: Regional groundwater monitoring network
 ARPA Piemonte

Cartographic basis: AERIAL SHOT 2009-2011 (hillshade) from DTM Lidar, grid resolution 5 m
 Map coordinates referred to the metric system WGS84 UTM zone: 32N



HYDROCHEMICAL TIME SERIES VARIATIONS period 2000 - 2020

