

## Article

# A State-of-the-Art Vegetation Map for Jordan: A New Tool for Conservation in a Biodiverse Country

Hatem Taifour <sup>1,2,\*</sup>, Kyle G. Dexter <sup>1</sup>, Jawad Al-Bakri <sup>3</sup>, Anthony Miller <sup>2</sup> and Sophie Neale <sup>2</sup><sup>1</sup> School of Geosciences, The University of Edinburgh, Edinburgh EH9 3FF, UK; kyle.dexter@ed.ac.uk<sup>2</sup> Centre for Middle Eastern Plants, Royal Botanic Garden Edinburgh, Edinburgh EH3 5LR, UK; tmiller@rbge.org.uk (A.M.); sneale@rbge.org.uk (S.N.)<sup>3</sup> Department of Land, Water and Environment, School of Agriculture, The University of Jordan, Amman 11942, Jordan; jbakri@ju.edu.jo

\* Correspondence: htaifour@royalbotanicgarden.org

**Abstract:** In many countries, including Jordan, the updating of vegetation maps is required to aid in formulating development and management plans for agriculture, forest, and rangeland sectors. Remote sensing data contributes widely to vegetation mapping at different scales by providing multispectral information that can separate and identify different vegetation groups at reasonable accuracy and low cost. Here, we implemented state-of-the-art approaches to develop a vegetation map for Jordan, as an example of how such maps can be produced in regions of high vegetation complexity. Specifically, we used a reciprocal illumination technique that combines extensive ground data (640 vegetation inventory plots) and Sentinel-2 satellite images to produce a categorical vegetation map (scale 1:50,000). Supervised classification was used to translate the spectral characteristics into vegetation types, which were first delimited by the clustering analyses of species composition data from the plots. From the satellite image interpretation, two maps were created: an unsupervised land cover/land use map and a supervised map of present-day vegetation types, both consisting of 18 categories. These new maps should inform ecosystem management and conservation planning decisions in Jordan over the coming years.

**Keywords:** remote sensing; Jordan; land cover; land use; vegetation map; vegetation type; phytogeography



**Citation:** Taifour, H.; Dexter, K.G.; Al-Bakri, J.; Miller, A.; Neale, S. A State-of-the-Art Vegetation Map for Jordan: A New Tool for Conservation in a Biodiverse Country. *Conservation* **2022**, *2*, 174–194. <https://doi.org/10.3390/conservation2010012>

Academic Editor: Antoni Margalida

Received: 21 January 2022

Accepted: 24 February 2022

Published: 3 March 2022

**Publisher's Note:** MDPI stays neutral with regard to jurisdictional claims in published maps and institutional affiliations.



**Copyright:** © 2022 by the authors. Licensee MDPI, Basel, Switzerland. This article is an open access article distributed under the terms and conditions of the Creative Commons Attribution (CC BY) license (<https://creativecommons.org/licenses/by/4.0/>).

## 1. Introduction

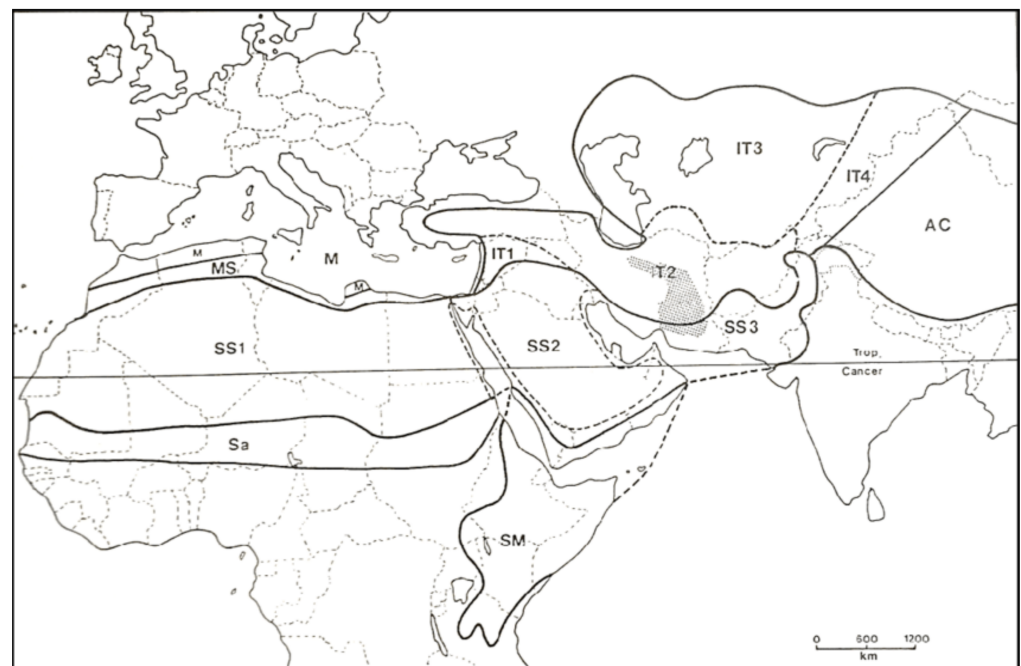
If natural resources are to be managed sustainably, it is crucial to assess land cover/land use and the spatial distribution of vegetation types. This is also helpful for protecting habitats and for providing data for vegetation cover modelling. Our goal here is to derive accurate maps and cover estimates for vegetation in Jordan through the use of both field study and satellite imagery. Jordan is a region of high vegetation complexity and provides an ideal testing ground for methods in land cover and vegetation type mapping.

Since Alexander von Humboldt first began categorising vegetation zones in 1807, biogeographers have classified the planet into chorological units. Prior to his work, it was typical to focus on individual plants; Humboldt shifted this towards a more collective focus on species—their distribution, growth forms, and how they relate to their surroundings [1]. This new approach meant that communities and associations among plants were able to be identified [2]. August Grisebach utilised this new approach to develop what would become known as phytogeographic regions, including the Mediterranean and Irano–Turanian regions, according to the species composition and physiognomy of individual vegetation groups [2,3].

Jordan is situated at the meeting point of Europe, Asia, and Africa [4]. This is rare among countries, as four main plant geographical regions meet at this point. The first person to map these areas was Eig [5,6], who used his analysis of plant lists and assessment

of the physiognomic characteristics of the region's geography and topography to develop his maps. He denoted four main units for this region, all with discrete climate and flora: Irano–Turanian, Mediterranean, Saharo–Sindian, and minor Sudano–Decanian enclaves. Eig's [5] findings revealed that around 30% of plant species were found in two or more phytogeographic regions. Attempts have been made by researchers such as Whyte to either amend the existing boundaries or to subdivide the regions further [4]; moreover, Zohary posited that as more reliable analytical tools are devised, more appropriate boundary changes may be possible [3].

The research of Zohary [3] into the origins and categorisation of Middle Eastern vegetation has been the standard by which phytogeography in the region has been interpreted for much of the last five decades. His work separated Arabia into two main floral areas, with the southern region belonging to the Sudano–Decanian, and the central and northern regions to the Saharo–Sindian [3]. This was not disputed until 1991, when White and Léonard [7] revised Zohary's approach and extended the Somalia–Masai Regional Centre of Endemism and the Afro–Montane archipelago-like Regional Centre of Endemism into southwest Arabia and divided their Saharo–Sindian zone into the Nubo–Sindian subzone, which represents the old Sudano–Decanian tropical vegetation, of Zohary (with *Vachellia tortilis*), and the Saharo–Arabian subzone (extra-tropical vegetation), which represents (in Jordan) the Saharo–Sindian of Zohary (with *Vachellia gerardii*). White and Léonard suggested that the Saharo–Sindian and Irano–Turanian zones are the two main phytochoria that influence Jordan [7], with each further subdivided subsequently into smaller, Middle East region-specific phytochoria [8], as illustrated in Figure 1.



**Figure 1.** Main phytogeographical regions covering Asia and Africa (Reprinted/adapted from [7]). Regional zones are represented by: SS = Saharo–Sindian, SS1 = Sahara regional subzone, SS2 = Arabian regional subzone, SS3 = Nubo–Sindian local centre of endemism, M = Mediterranean; IT = Irano–Turanian, IT1 = Western Irano–Turanian regional subcentre, IT2 = Southern Irano–Turanian regional subcentre, IT3 = Northern Irano–Turanian regional subcentre, IT4 = Eastern Irano–Turanian regional subcentre, AC = Central Asiatic, Sa = Sahel, SM = Somalia–Masai.

Expanding on the work of Long [9], Al-Eisawi [10] determined that there are nine bioclimatic areas in Jordan, which are categorised into four overarching clusters: Saharan Mediterranean (cool, warm, very warm); arid Mediterranean (cool, warm, very warm); semi-arid Mediterranean (cool, warm); and sub-humid Mediterranean. Later, Al-Eisawi [11]

also created a map based on the delineations made by Zohary [3] of the regions of vegetation in the Middle East.

The flora in the region under study is very species rich due to the area being situated at the meeting point of three phytogeographic regions [3,11–13]. The land changes from Mediterranean maquis and forests to grassland, steppes, and extremely arid desert biomes within a relatively short space. While edaphic influences do have an effect on vegetation, it is the climate that has a greater impact [13]. As well as vegetation being influenced by environmental pressures, human activities also affect the way plants are distributed. Some research has accounted for forestry, agriculture, and grazing potential along with human activity when classifying vegetation [9,14–16].

The vegetation types of the region have also been mapped. While earlier work (e.g., [3,5,6]) was conducted prior to modern development and experienced fewer restrictions on political boundaries, other modern works were either restricted by political boundaries or the study was conducted across limited borders based on extensive fieldwork [11,14,16,17]. The most recent and updated map of vegetation for Jordan was produced by Albert et al. [14]. The map included 19 vegetation types and was primarily based on topography and coarse-resolution satellite images to describe vegetation cover of the country at a scale of 1:1 M. However, no map to date has combined state-of-the-art earth observation approaches with extensive field data to ground-truth remote sensing data.

Remote sensing data have contributed to land cover and vegetation type mapping by applying advanced digital classification techniques to derive both land cover and vegetation types at different spatial resolutions [18]. For vegetation mapping, the outputs from digital classification of remotely sensed data are intensively used to map land cover dynamics [19], floristic diversity, phytogeography [20], and vegetation [21] over large geographic areas. In order to identify and map land cover and vegetation in a continuous manner, remote sensing is vital. Data from sensors such as Landsat, MODIS, Sentinel, SPOT, and ASTER can be obtained cheaply or free of charge, with some providing wide swath-width images (over 290 km).

Vegetation mapping of Jordan is now urgently required so that appropriate and effective planning can be made for managing agriculture, afforestation, and rangeland, and for the degradation of habitats to be reduced. Prior research has been less than ideal for a multitude of reasons; for instance, studies did not utilise satellite imaging, were not comprehensive enough, or did not include field observations to support mapping and definition of the areas under investigation. Further, much of the existing research fails to include data from maps based on land use, geological or meteorological information, vegetation sampling, or GIS methodologies, and often does not utilise herbarium specimens or pictures to identify the species found in each region.

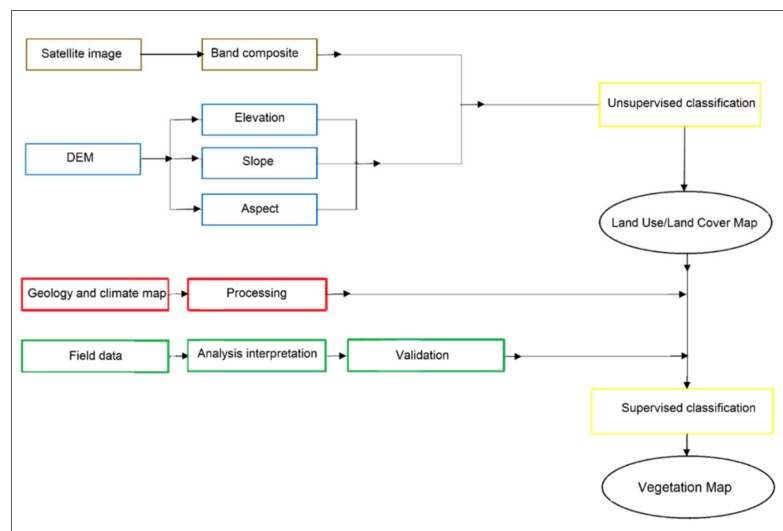
Taking all of the abovementioned points into consideration, it is clear that no study currently exist that describes Jordan's vegetation in a spatial context for use in mapping or restoring particular kinds of vegetation. This would be extremely useful in the management and conservation of the country's biodiversity [22]. Hence, the aim of the current study is to map and classify the vegetation cover of Jordan using a combination of the latest satellite data, extensive ground data, and state-of-the-art statistical approaches.

## 2. Materials and Methods

### 2.1. Processing of Remote Sensing Data

For the main floral groups to be displayed and a map of the vegetation to be produced (1:50,000 scale), it was necessary to define the types of vegetation present by utilising a reciprocal illumination approach between on-the-ground sampling and satellite imagery, as illustrated in Figure 2. The first step was to examine Sentinel-2 satellite images of Jordan to assess how well they correlate with known land cover classes, using Al-Bakri et al.'s land cover map [23]. Then, a more up-to-date land cover/land use map was created. The third step was more specialised and involved assessing how compatible the satellite images were with existing maps of the vegetation. Finally, decisions were made regarding where

field sampling and ground-based verification were needed. The study of sufficient samples was confirmed within the known vegetation types in satellite images, and a minimum of 30 sample areas were collected for each hypothesised class of the produced land cover/land use map.



**Figure 2.** The mechanism of actions for producing the map.

A digital elevation model (DEM) was used to represent the bare ground topographic surface of the earth excluding trees, buildings, and any other surface objects. The information from the geological map was useful in this area, as the map indicated shallow soil depth in this area as well as the presence of a marble layer close to the surface. This shallow soil has a high salt content as these areas receive marginal rainfall. The climatic data (i.e., isohyets of rainfall and temperature) were very useful to classify some types of vegetation (i.e., thermophilous vegetation in Jordan Valley).

Several data sources can be used for obtaining remotely sensed data. The current study utilised the United States Geological Service (USGS) EarthExplorer website (<https://earthexplorer.usgs.gov/> (accessed on 30 October 2017)) to obtain Sentinel-2A images and prepare them for ArcMap usage. Eighteen cloud-free Sentinel-2A images were selected for use in this study. Individual bands of Sentinel-2 images were examined and used to create a natural colour composite, which is an important step to understand how to combine these bands for use in visualisation and analysis. Other spectral bands contain information that is very useful for visualisation and is used in later stages (e.g., false colour combinations were used in this study to identify urban area boundaries). The Sentinel-2 Multi-Spectral Instrument (MSI) has a span of 13 spectral bands from the visible and the near-infrared to the shortwave infrared at different spatial resolutions ranging from 10 to 60 metres on the ground. Of all those bands, only the four bands at 10 m resolution that gave information about vegetation cover were composited and used: bands 2, 3, 4, and 8. Images taken from Sentinel-2 were pre-processed, mosaicked, and clipped so that the images were calibrated. The images were pre-processed so that land cover/land use could be interpreted visually. Two techniques can be used to classify vegetation from images: supervised and unsupervised, with each method selected according to whether or not ground data are included. In supervised classification, training data collected from ground observations are used to initiate spectral signatures of the land cover types. The method has the advantage of the final map being comprised of known classes. Supervised classification approaches tend to give more accurate results in homogenous landscapes and when enough training data are available. Unsupervised classification methods have the advantage of separating spectral classes without prior knowledge of the area and without

training data. Therefore, when mapping thematically from imagery, unsupervised methods are commonly employed [24].

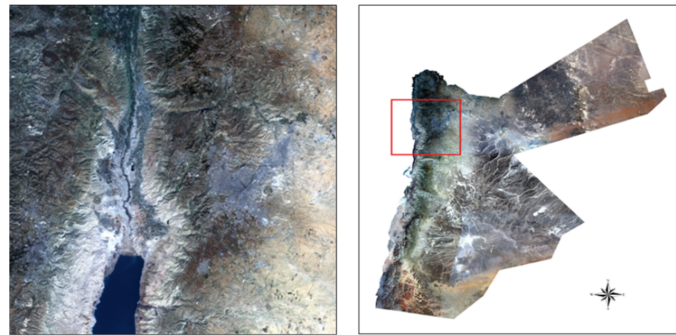
In this study, unsupervised classification was used for mapping the land cover/land use of the country, while supervised classification was carried out to derive a vegetation map based on vegetation type clusters obtained from ground surveys of the species composition of vegetation. In this hybrid approach, classification accuracy was improved using both auxiliary data and a wide range of expert knowledge [25,26]. Hybrid supervised and unsupervised classification methods were adopted, along with the field experience of the first author, so that a greater degree of accuracy could be obtained within a shorter timeframe. Further, ArcGIS 10.5.1 software and the Sentinel Toolbox Sen2cor plugin were utilised for classification of images taken from the satellite and for simplifying the spectral data.

## 2.2. Using Unsupervised Classification to Produce Land Use/Land Cover Map

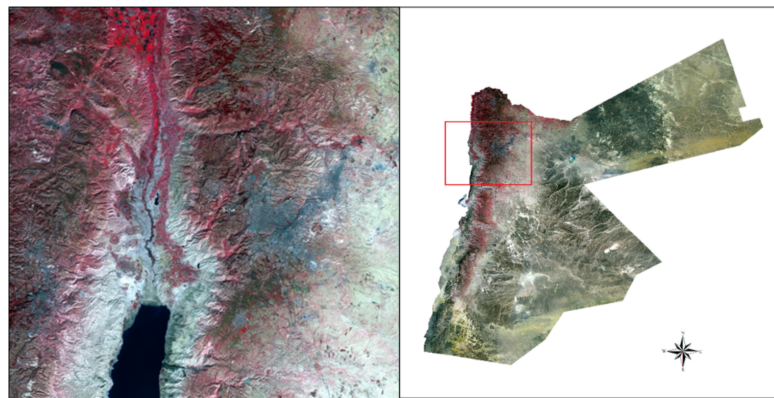
An unsupervised technique was employed to produce a baseline map from which vegetation sampling sites could be located. This was also used to update the land cover/land use map for Jordan. Ancillary datasets were used to develop an initial overview of the area under investigation, and then land cover/land use maps from the Jordan Land Cover Atlas [27], Al-Bakri et al. [23], and geological and soil maps from the Ministry of Agriculture of Jordan were also consulted [28]. Unsupervised classifications are determined by automatic software calculation of pixel similarity. For instance, forest pixels can be differentiated from water pixels by automatically grouping these pixels based on their spectral characteristics.

First, the visible spectrum (RGB) was utilised to visualise the landscape in natural colour. Figure 3 shows the resulting images. However, it was necessary to assess the full spectral capabilities of Sentinel-2 to acquire a better understanding of the nature of the area under study through the different colour composites of the multispectral data. Therefore, the images of Sentinel-2 were displayed in both true colour (TCC) and false colour (FCC) composites. Both combinations showed different characteristic of vegetation and land cover. The TCC reflected the variations in soils and rocks (Figure 3), while the FCC reflected the variations in natural vegetation and agricultural areas (Figure 4). In addition, spectral indices were produced for the study. Such indices are used for highlighting the landscape's geological features, bodies of water, and vegetation. Here, the data were cut down and changed into more meaningful information using ratios between bands to transform the spectral data:  $NDVI = (NIR-Red)/(NIR+Red)$ .

Typically, many classes are identified during analysis, and these are then honed and grouped more precisely to obtain more meaningful classes of features. We did this using the unsupervised method known as the Iterative Self-Organising Data Analysis Technique (ISODATA). The ISODATA method was preferred over the K-means method as splitting and merging of clusters was possible, so that the final number of classes would not be limited to the number identified by the trainer [18]. In this study, unsupervised classification was initiated with 30 spectral clusters, and the image pixels were then clustered into groups using ISODATA. Ground reference data and researchers' expertise were then used to judge some of the clusters before a thematic urban land cover/land use map was produced. The classes were interpreted using two methods. The first involved interpreting images visually using field experience and feature attributes from high-resolution images taken from Google Earth. The second method was an automatic process using the vegetation index thresholds of feature attributes in each polygon. A visual interpretation was used for most of the mapping and the final results were checked using global positioning systems (GPS), topographic maps, and a number of field visits.



**Figure 3.** Satellite images in true colour composition.



**Figure 4.** Satellite images in false colour composition.

### 2.3. Field Data

We sampled the vegetation in order to validate vegetation types in the field. GPS data were gathered from the centre of homogeneous areas with respect to vegetation. Field surveys were conducted based on the previously produced land cover/land use map. A plan was made to sample 640 (50 × 50 m) plots during autumn 2017, spring and autumn 2018, and spring 2019. For each land cover class, approximately 30 sample areas were gathered [29], sometimes including multiple vegetation types. The percentage canopy cover for each layer (tree, shrub, and herbaceous layers) found in the sampling units was recorded. For all trees, shrubs, and perennial herbaceous plant species, the percentage of cover across the entire plot was estimated.

All of the vascular plants that could be identified to the sub-species level were listed for each of the vegetation classification plots. To accomplish this task, the team relied upon the experience of the first author, gained from his work as a botanist at the Royal Botanic Garden of Jordan for nearly 15 years. The Angiosperm Phylogeny Group (APG IV 2016) classification was followed along with a checklist of Jordan’s vascular plants [30].

### 2.4. Statistical Analysis

Hierarchical clustering of field plots was executed based on the percent cover of each plant species. Annual species were excluded, because presence and percent cover could not be reliably recorded, as some plots were visited in different seasons. A dissimilarity matrix [31] was produced using the Bray–Curtis floristic distance approach, an index that helps to determine the differences in species’ relative abundance profiles among sites [32]. Ward’s hierarchical clustering algorithms were used to maximise the coherence of clusters, as per Murtagh and Legendre [33]. A number of approaches have been suggested to determine the optimal number of clusters including Silhouette, Elbow, and k-means [34,35]. The problem is that most apply arbitrary thresholds that do not account for knowledge of the vegetation. Thus, here, the appropriate number of clusters was estimated based on

biological and field knowledge of the sites and vegetation. Analyses were carried out with the 'vegan' and 'recluster' packages in the R statistical environment [36–38].

For each identified habitat, an indicator species list was developed based on indicator values (IndVals) [39]. Two components make up IndVals, namely fidelity and specificity (percentage of sites containing the target species, and the probability of a species being abundant in a particular habitat, respectively) [39,40]. The species considered significant had IndVals indicators over 0.2, and a *p*-value lower than 0.05 for each particular habitat [39,41]. The 'indicspecies' R package was used for analysis [42].

### 2.5. Using Supervised Classification to Produce the Vegetation Map

The supervised classification method requires input training data for each class created by the researcher to calculate the classified image. Relying mainly on land cover classes, vegetation cover was classified using a combination system between physiognomic and phytosociological criteria [43]. All of the polygons/map units were given a vegetation type category according to the clustering analyses and training data, and this was revised and, if necessary, reassigned once the field data were analysed. In the interpretation phase, mosaics were reported, and the percentage of each type of vegetation found within the map unit boundary was provided.

In addition to mapping vegetation types, the boundaries of phytogeographical regions were determined using the approach described by White and Léonard [7]. A map of Jordan's phytogeographical regions was developed using a combination of remotely sensed images and field data to delineate the biogeographical boundaries.

### 2.6. Accuracy Assessment of Vegetation Maps

There were four key steps taken to assess the accuracy of our maps: (i) visually inspecting the maps, (ii) comparing the classes of the thematic maps, (iii) using accuracy metrics based on comparing the class labels from ground data and thematic maps, and (iv) using an error or confusion matrix [44]. The technique most often utilised for assessing accuracy is the confusion matrix. Here, the interpreted classification is compared to the referenced classification that is known to be correct [45,46].

As per [47], a Kappa index was worked out for all typology levels by crossing the classification raster layers and validation points. Kappa = 1 when classification is perfect; Kappa > 0 when the observed correct proportion is greater than the proportion expected by chance; Kappa < 0 when the observed correct proportion is less than the proportion expected by chance [47]. If a classification has a Kappa index over 0.8, this means the classification accuracy is very good. An index of 0.6–0.8 means the accuracy is good; anything lower than 0.6 indicates a low classification accuracy [48].

The accuracy assessment was undertaken using random stratified ground-truth 'square samples' validation. Squared samples of 2500 m<sup>2</sup> (the size of our field plots) were generated. Overall accuracy was calculated using the percentage of land cover that was classified correctly (sum of the correct classifications (diagonal elements) divided by the number of samples) [48].

ArcGIS 10.5.1 software was used to generate the reference maps from ground observations. The use of this approach enabled the agreement between the ground truth and the current land cover raster to be reflected through the use of four measures of accuracy: the user's accuracy, the producer's accuracy, the overall accuracy, and the Kappa coefficient.

## 3. Results

### 3.1. Land Cover/Land Use Map

The land cover map is the result of the integration of remotely sensed data with thematic features from land cover models. According to this interpretation of satellite images, the map shows 18 classes of land cover (Figure 5, Table 1).

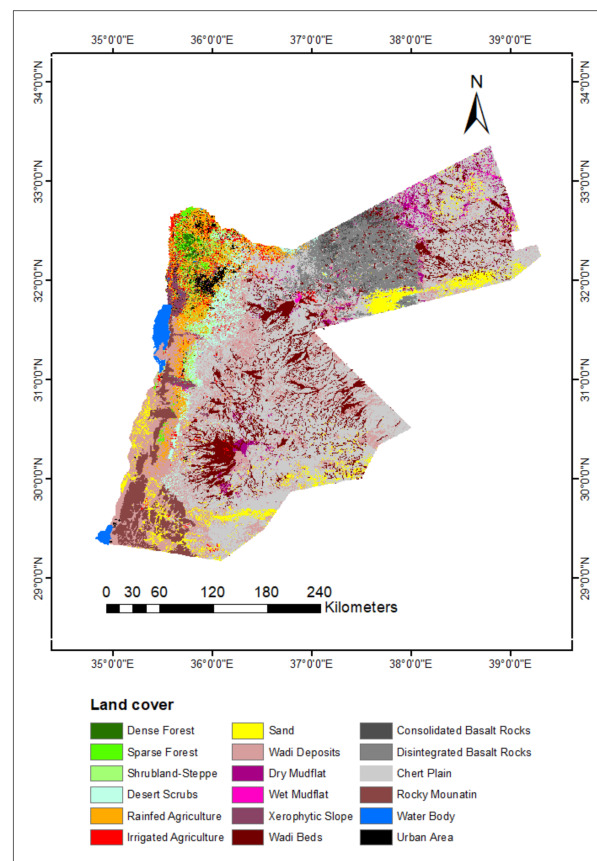


Figure 5. Land cover/land use map of Jordan produced from the unsupervised classification.

Table 1. Land cover statistics in Jordan.

	Land Cover Class	Total Km <sup>2</sup>	Percentage	Total Percentage
Forests	Dense Forest	398.2	0.45	0.89
	Sparse Forest	394.3	0.44	
Highly productive rangelands	Shrubland/Steppe	1484.0	1.66	14.1
	Desert Scrubs	3023.8	3.38	
	Wadi Beds	8098.0	9.06	
Arable lands	Rainfed Agriculture	3532.4	3.95	5.39
	Irrigated Agriculture	1289.8	1.44	
Dry lands	Sand	5114.6	5.72	77.9
	Wadi Deposits	15981.4	17.89	
	Dry Mudflat	1667.4	1.87	
	Wet Mudflat	342.6	0.38	
	Xerophytic Slope	1009.4	1.13	
	Consolidated Basalt Rocks	691.0	0.77	
	Disintegrated Basalt Rocks	7261.7	8.13	
	Chert Plain	33744.4	37.77	
Others	Rocky Mountain	3788.6	4.24	1.72
	Water Body	540.7	0.62	
	Urban Area	980.0	1.1	



### 3.2. Vegetation Map

Sixteen groups, or vegetation type classifications, were produced from hierarchical cluster analysis (Figure 6). Sampling sites were grouped together based on the composition of the perennial vegetation present in each site. Two overarching vegetation groups emerged from the cluster analysis (Table 2).

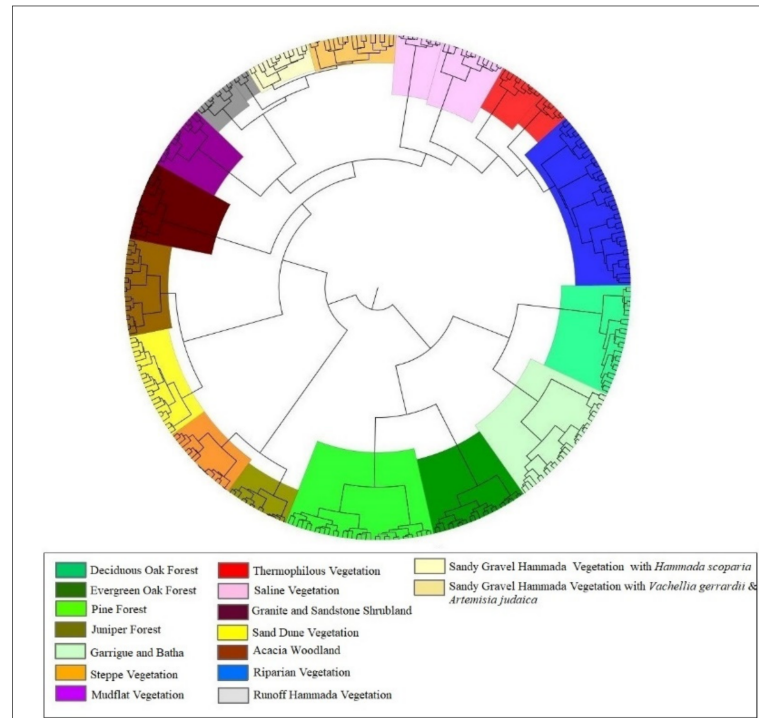


Figure 6. Site classification based on Agglomerative Hierarchical Clustering analysis.

Table 2. Vegetation groups sorted according to the composition of the perennial plants.

Vegetation Group	Vegetation Type
Mesic group	Deciduous Oak Forest
	Evergreen Oak Forest
	Pine Forest
	Garrigue and Batha
	Juniper Forest
	Acacia Woodland
	Steppe Vegetation
Xeric group	Sand Dune Vegetation
	Sandy Gravel Hammada Vegetation with <i>Hammada scoparia</i>
	Sandy Gravel Hammada Vegetation with <i>Vachellia gerrardii</i> and <i>Artemisia judaica</i>
	Granite and Sandstone Shrubland
	Mudflat Vegetation
	Runoff Hammada Vegetation
	Riparian Vegetation
	Saline Vegetation
	Thermophilous Vegetation

From the species composition analysis, 54 indicator species were identified that could then be used to classify species of vegetation. Annual plant species were not included in the cluster analyses, but one vegetation type, specifically Gravel Hammada vegetation, lacks perennials. For this type, annual indicator species were added based on researcher experience and field records.

### 3.3. Using Remote Sensing to Classify Vegetation Types

Based on the land cover/land use map and as a result of using the supervised classification method in interpreting the satellite images, a current vegetation map was produced at a scale of 1:50,000 that contains 18 vegetation types (Figure 7, Table 3).

Two vegetation types—anthropogenic pine forest and gravel hammada vegetation—were added to the map, although they were not included in the cluster analysis. The reason for this is that there were no perennial indicator species for the gravel hammada vegetation, and there were no unique indicator species that distinguished both the natural and anthropogenic pine forest. According to the interpretations of the satellite images, there are 68 areas in which riparian habitats occur, mostly along tributaries of the Jordan River and Yarmouk River or wadis flowing towards the Dead Sea.

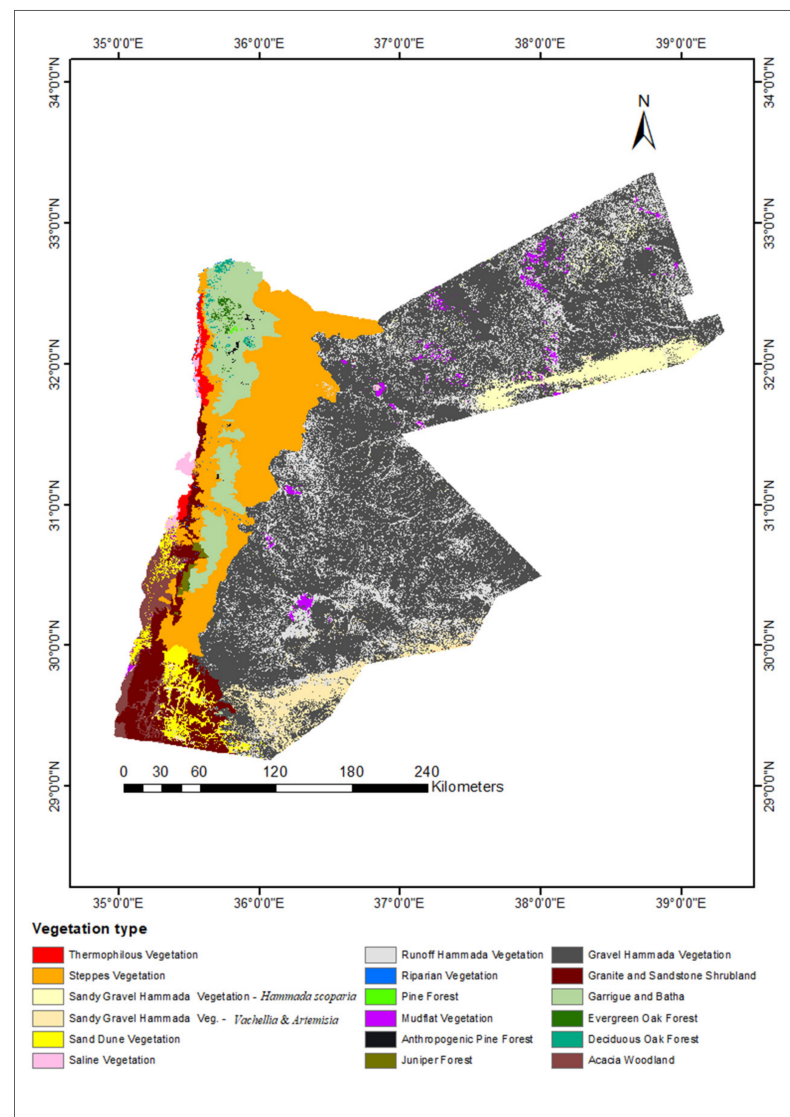


Figure 7. Vegetation map based on the interpretation of satellite images.

**Table 3.** Vegetation map statistics in Jordan.

Vegetation Type	Total Km <sup>2</sup>	Percentage (%)
Gravel Hammada Vegetation	45871.9	51.34
Sand Dune Vegetation	1760.7	1.97
Steppe Vegetation	11293.4	12.24
Granite and Sandstone Shrubland	4079.7	4.57
Acacia Woodland	1453.7	1.63
Sandy Gravel Hammada Vegetation with <i>Hammada scoparia</i>	2408.5	2.70
Sandy Gravel Hammada Vegetation with <i>Vachellia gerrardii</i> and <i>Artemisia judaica</i>	2909.8	3.26
Garrigue and Batha	4815.2	5.39
Runoff Hammada Vegetation	11677.4	13.07
Mudflat Vegetation	893.1	2.00
Saline Vegetation	392.7	0.44
Juniper Forest	191.7	0.21
Deciduous Oak Forest	156.3	0.17
Anthropogenic Pine Forest	116.3	0.13
Riparian Vegetation	71.9	0.08
Thermophilous Vegetation	534.3	0.60
Pine Forest	18.3	0.02
Evergreen Oak Forest	156.7	0.18

### 3.4. Phytogeographical Regions

The four main phytochoria are described below, each subdivided into specific Middle Eastern phytochoria that have influence in Jordan: the Mediterranean, Irano–Turanian, Saharo–Sindian–Nubo–Sindian subzone, and the Saharo–Sindian–Arabian regional subzone (Figure 8).

The Mediterranean region is restricted to the Highlands extending from Irbid in the north to Ras An-Naqab in the south, in addition to some isolated representation in the southern mountains. The Irano–Turanian zone separates the Mediterranean from the Saharo–Sindian–Arabian regional subzone on one side, and the Mediterranean from the Saharo–Sindian–Nubo–Sindian subzone on the other side [7]. The Saharo–Sindian–Arabian regional subzone is located at the eastern desert and accounts for the greatest proportion of land cover in Jordan—about 72%. The Saharo–Sindian–Nubo–Sindian subzone penetrates into Jordan, following Red Sea coastal areas, from tropical regions of the Arabian Peninsula and northeast Africa. A summary of each bio-geographic region and their associated vegetation types is presented in Table 4.

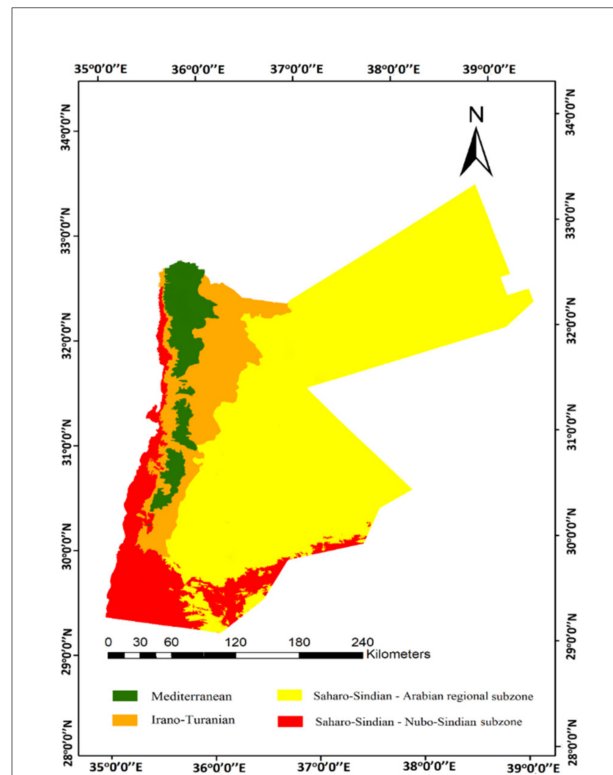


Figure 8. Phytogeographical regions of Jordan based on the updated vegetation map.

Table 4. Vegetation types and the bio-geographic region they represent.

Bio-Geographic Region	Vegetation Type
Mediterranean	Deciduous Oak Forest
	Evergreen Oak Forest
	Pine Forest
	Garrigue and Batha
	Juniper Forest
Irano–Turanian	Riparian Vegetation
	Steppe Vegetation
Saharo–Sindian–Arabian regional subzone	Riparian Vegetation
	Mudflat Vegetation
	Gravel Hammada Vegetation
	Runoff Hammada Vegetation
Saharo–Sindian–Nubo-Sindian subzone	Sandy Gravel Hammada Vegetation with <i>Hammada scoparia</i>
	Mudflat Vegetation
	Granite and Sandstone Shrubland
	Riparian Vegetation
	Thermophilous Vegetation
	Saline Vegetation
	Sand Dune Vegetation
	Acacia Woodland
Sandy Gravel Hammada Vegetation with <i>Vachellia gerrardii</i> and <i>Artemisia judaica</i>	

### 3.5. Accuracy Assessment of Vegetation Maps

In this study, four accuracy measures of each typology of the maps were calculated: the user's accuracy, the producer's accuracy, the overall accuracy, and the Kappa coefficient. These measurements were extracted using the specific confusion matrices listed in Appendix A. The overall accuracy and Kappa coefficient statistics were used to examine the quality of land cover and vegetation maps as a whole. The Kappa coefficient was used to determine the agreement between the map and reality, where 0 = complete disagreement and 1 = complete agreement.

All vegetation maps previously produced by experts and reviewed in this study were of poor to moderate accuracy, where the confusion matrices showed a diagonal line that illustrates a weak to medium agreement between the layers (land cover layer and ground-truth points). The classification accuracy of these maps indicated by the Kappa index also showed a low classification accuracy. On the other hand, the results of the analysis showed high overall accuracy for both the unsupervised land cover/land use map and the supervised vegetation map. The Kappa index also showed a high agreement for these two produced maps, as the result was more than 80%, indicating very good classification accuracy. Table 5 below summarises the accuracy and Kappa coefficient for all maps.

**Table 5.** Accuracy and Kappa coefficient for the vegetation maps.

Map	Accuracy Assessment (%)	Overall Accuracy	Kappa Coefficient	Classification Accuracy
Vegetation map produced by Kasapligil (1956)	47	Low	0.38	Weak
Vegetation map produced by Al-Eisawi (1996)	50	Moderate	0.43	Weak
Vegetation map produced by Danin (1999a)	59	Moderate	0.47	Weak
Vegetation map produced by Albert et al. (2003)	61	Moderate	0.55	Weak
Land cover/land use map	91	High	0.90	Very good
Current vegetation map	95	High	0.94	Very good

## 4. Discussion

### 4.1. Land Cover/Land Use Map

The land cover/land use map of Jordan produced here includes detailed information pertaining to agricultural activity and urbanisation, which can be used to address the issues related to the country's increasing population. Overall, the accuracy of the land cover/land use map was relatively high and enabled the derivation of a vegetation map, after merging ground data sources. The land cover map was in agreement with other maps produced for Jordan [23,27] and with global land cover maps [49], particularly for the classes of dry lands, arable land, forests, and water bodies. For other classes, the differences in classification could be attributed to the type of remote sensing data and the classification scheme used in this study, which was intended for derivation of a vegetation map. The output map was produced as a series of digital layers, which were then overlain and analysed using a GIS in order to obtain land cover and land use percentage information. The map shows that 5.4% of the land is arable land, and dry lands account for 77.9% of the country. Highly

productive rangelands are represented by the steppes, desert scrubs, and wadis located in the eastern desert, and constitute 14.1% of the total area. These findings can be used to update the percentages given in the Atlas of Jordan [27].

#### 4.2. Vegetation Map

The clustering analyses delimited 16 vegetation types, all of which were included in the four older vegetation maps [11,14,16,17], with the exception of three vegetation types that were added during this study, namely runoff hammada vegetation, sandy gravel hammada vegetation with *Haloxylon scoparia*, and sandy gravel hammada vegetation with *Vachellia gerrardii* and *Artemisia judaica*. Al-Eisawi [11] indicated that the hammada is divided into four types, but he did not classify them on his map. The 16 vegetation types can be largely separated into two higher-level groups: mesic vegetation types growing in the highlands, and xeric vegetation growing in the eastern desert and the Jordan Valley [13,50]. Juniper forest and steppe vegetation form their own group distinct group, however, which represents a transition between the mesic and xeric areas [51]. While juniper is considered a Mediterranean species, it is also found in habitats alongside steppes shrubs.

Within the higher-level 'dry group', sand dune and acacia woodland, which grow in Wadi Araba and Wadi Rum, cluster together as their ground flora is compositionally similar; the shrub stratum dominates sand dune vegetation, and the tree stratum dominates acacia types [11,52]. Granite and sandstone scrubland form a group, likely because they are similar in having rock crevices that allow for water accumulation and can therefore support the germination of Mediterranean species typically growing in areas with higher rainfall [17]. Sandy gravel hammada vegetation with *Vachellia gerrardii* and *Artemisia judaica*, sandy gravel hammada vegetation with *Hammada scoparia*, and mudflat vegetation are clustered together because there is considerable overlap between these types of vegetation [11]. They also occur together in the eastern desert. The last sub-group within the higher-level dry group contains vegetation that is edaphically influenced such as riparian vegetation, saline vegetation, and thermophilous vegetation. All of these vegetation types occur in the Rift Valley, and frequently exhibit similar bush and herbaceous cover [12].

We mapped the distribution of these 16 vegetation types, plus two additional types (gravel hammada and cultivated pine forest), which we included based on remotely sensed information. These additional types of vegetation were only able to be determined through the use of high-quality satellite images, in which these latter two vegetation types were clearly visible along contour lines.

In our final map, the locations of *Quercus ithaburensis*-dominated deciduous oak forests were identical to those posited by both Al-Eisawi and Kasapligil, but not to locations outlined in Albert et al. or Danin [11,14,16,17]. In Albert et al.'s study, coverage of the Wadi Essir region is indicated to be wholly deciduous oak forest [14], while Danin showed no forested areas at all in either Wadi Essir or Al-Alouk [17]. Neither of these studies reflects the true coverage, which in Wadi Essir involves two oak species: deciduous oak *Quercus ithaburensis* and evergreen oak *Quercus coccifera*. In addition, the deciduous oak *Quercus ithaburensis* forest covers the Al-Alouk region. On the other hand, the findings of the current study support those of Kasapligil that suggested trees of *Pistacia atlantica* and *Ceratonia siliqua* are present [16]. As would be expected, the supervised current vegetation map gives a more accurate result than that obtained from the unsupervised map. Jordan's forested regions account for 0.71% of the total land area, with acacia woodland and forests combined totalling 2.3%. These figures can be considered an update to the estimates put forth by the Ministry of Agriculture [53].

All of the prior vegetation maps represent the *Quercus coccifera*-dominated evergreen oak forests fairly well, although there is substantive variation in their accuracy [11,14,16,17]. Evergreen oak constitutes the densest forest in the country, with some areas achieving 95% canopy cover. This forest is also extremely important in terms of providing shelter for biodiversity; indeed, Zohary noted the richness of the habitat for many different species of flora and asserted it to be characteristic of the east Mediterranean maquis [54]. The current

study found *Quercus coccifera* trees in areas neighbouring *Quercus ithaburensis* deciduous oak forests, with areas where the two species coexist in Wadi Essir and to the west of Ajloun—a finding that correlates to those of both Kasapligil and Al-Eisawi [11,16].

Pine forests account for 18.29 km<sup>2</sup> of Jordan's land cover. The Ministry of Agriculture report an area greater than this, but this is because they have a tendency to also include cultivated pine forests in their estimations. Pine trees are mainly found in Zay and Dibeen, but this study found some small pine forest areas in Jarash and Ajloun, lending further support to prior research [3,55]. These forests are found anywhere between 500 masl and 1000 masl, contradicting Al-Eisawi's assertion that they only occur at elevations greater than 700 masl [11]. The Dibeen Forest Reserve is home to approximately 46% of the country's total cover of natural pine forest.

The study's findings did not correlate fully with existing perspectives regarding what constitutes the climax in Mediterranean forests, as natural regeneration takes place in both evergreen oak and pine forests. One argument put forth by Atkinson and Beaumont is that *Pinus halepensis* forests represent the climax [55], while others such as Liphshitz and Biger believe that it is either *Quercus coccifera* or a combination of *Quercus coccifera* and *Pistacia palaestina* [56]. However, this study found that, sometimes, *Quercus coccifera* replaces *Pinus halepensis* in places where the primary vegetation has been degraded, and this is in agreement with prior research by Al-Eisawi [11].

In support of prior research (i.e., [11]), we found that herbaceous coverage in natural pine forests is far greater than in anthropogenic pine forests. Coverage can reach up to 60% in natural pine environments, yet in cultivated forests only around 20% is recorded. Al-Eisawi reported that the natural vegetation that grows under *Pinus halepensis* trees on yellow rendzina soil is not present under the same trees cultivated in terra rosa [11]. The reason for this is that rendzina soil is alkaline, and pine needles are acidic; thus, when the pine needles fall onto the soil they neutralise it, improving its quality. Conversely, red soil is acidic, so when the needles fall here the condition of the soil worsens, making it less favourable for many types of vegetation.

All of the previous vegetation maps of Jordan illustrate well how juniper forests are distributed [11,14,16,17]. Since the regions of Petra and Dana experience a higher annual mean temperature range than other regions in the mountains, juniper forests occur in habitats that are more steppe-like, with shrubs such as *Noaea mucronata* and *Artemisia sieberi* growing over an Irano-Turanian understory [17].

Garrigue and Batha regions are Mediterranean areas, apart from the cultivated and forest areas [11], and their distribution matches that observed in previous studies.

The steppe region does not appear as one large, uniform area, but rather as a meeting place where the Arabian regional and Mediterranean phytogeographical regions come together. All of the remaining steppe forests are located in the south of Jordan at Beer Ad-Dabghat and Beer Khdad, the areas neighbouring the eastern border of the juniper forest in the Irano-Turanian region. The trees found in these forests are typically historical *Pistacia atlantica*, and it is thought that these trees have existed here for at least a thousand years. Among the pistachios are *Rhamnus disperma* and *Prunus korshinskyi*, although in much smaller numbers. It is believed these species are a relict species from the Mediterranean [17]. Trees of *Pistacia atlantica* are also found in the eastern desert at Wadi Al-Botom, accompanied by *Retama raetam* and *Prunus arabica* shrubs [11]. The growth of these plant species in the desert may be due to the presence of some types of soil or rocks that may provide the necessary moisture requirements for species that are usually found in more humid areas [57].

Granite-sandstone regions are full of fissures, meaning that water infiltration after rainfall is prevalent. The water is able to permeate the rock fissures and reach any soil there. As the water is protected between and under the rocks, it is less likely to evaporate in the heat. This environment is suitable for endemic and rare species to flourish, even in the hotter desert regions. One example is a shrub endemic to Jordan, *Daphne mucronata* subsp. *linearifolia*.

Coverage of riparian vegetation in the canyons, rivers, and wadis differs depending on the edaphic and climatic conditions. In the north, trees of *Platanus orientalis*, *Populus euphratica*, *Tamarix palaestina*, and *Salix* spp. are associated with *Phragmites australis*, *Nerium oleander*, and *Arundo donax* shrubs. In the south, *Populus euphratica*, *Dalbergia sissoo*, and *Phoenix dactylifera* trees are associated with the same shrubs plus *Myrtus communis*. On the banks of the Jordan River, trees of *Populus euphratica* populate the area closest to the water [3,6]. Many riparian vegetation sites were able to be identified from the satellite images, and a few of them appeared in the map produced by Al-Eisawi [11].

There are concentrated enclaves of thermophilous vegetation surrounding the Dead Sea. These enclaves were referred to by Zohary as ‘Sudano–Decanian enclaves’ [3,13], while Al-Eisawi named them ‘Sudanian tropical vegetation’ [11]. Degradation and fragmentation of this vegetation type is widespread due to the expansion of farming; this was first reported by Al-Eisawi and the current study reinforces this assertion [11]. Alongside the thermophilous vegetation is saline vegetation close to the Dead Sea and along the Jordan Valley, as well as in some parts of the eastern desert. *Tamarix* trees are able to tolerate high salt levels, while for shrubs, *Atriplex* spp. can withstand saline soils [11]. Herbaceous vegetation is particularly salt intolerant, however, and may not grow here at all.

Sand dune vegetation is very sparse, and generally trees cannot grow in pure sand. Some botanists delineated this vegetation growing in independent areas surrounded by different vegetation types in Wadi Rum and Wadi Araba in the south [11,14,16], whereas Danin considered it connected to desert savannoid vegetation in the south and extreme desert in the east [17]. Large sand dunes are frequently much better vegetated than the surrounding plains or sand flats. The huge sand sheet areas are populated with *Hammada salicornica*, *Haloxylon persicum*, *Caroxylon tetrandrum*, and *Anabasis articulata*. The only restricted plant of all the species in this environment is *Haloxylon persicum*, which can form quite dense shrubland on dunes [17].

All of the previously produced vegetation maps of Jordan have included acacia woodland. Kasapligil refers to it as “scattered acacia grasslands”, Al-Eisawi names it “acacia and Sudanian rocky vegetation”, Danin calls it “desert savannoid vegetation”, and Albert et al. refer to it as “acacia woodland” [11,14,16,17]. This type of vegetation is represented by sporadic *Vachellia* species as well as other desert semi shrubs like *Anabasis articulata*, *Hammada salicornica*, and *Retama raetam*.

There are five types of vegetation that make up the eastern desert, namely runoff hammada, gravel hammada, mudflat, and two types of sandy gravel hammada—one dominated by *Hammada scoparia* and another dominated by *Vachellia gerrardii* and *Artemisia judaica*. While mudflats frequently occur in the Badia, only one is found in Wadi Araba. There is typically no vegetation growing on the mudflats, but some species can be found around its periphery [11].

Most of the eastern desert is covered with gravel hammada. In this type of vegetation, only desert annuals generally grow. Desert shrubs belonging to the families Asteraceae and Chenopodiaceae occur sporadically next to and within the wadi beds, forming Runoff Hammada Vegetation. There are two sections of the Badia that have been identified as having soil that consists of both sand and gravel: one in the south, along the border with Saudi Arabia; the other in the northeast, close to the Iraqi–Saudi border. In the south, *Vachellia gerrardii* trees and *Artemisia judaica* shrubs are dominant, while in the northeast, shrubs of *Hammada scoparia* are the most commonly occurring species.

#### 4.3. Phytogeographical Regions

Jordan is in a unique location geographically, where four separate phytogeographical zones meet. The Mediterranean region appears to be the least difficult to delineate out of all the zones. The Mediterranean region is home to the vast majority of the country’s population, and subsequently is the area that has experienced the most severe effects from human activities [53]. Here, disparate vegetation types are found intersecting with each other, such as garrigue, batha, maquis, and forests, which is related to vegetation



degradation. The maquis vegetation type is characterised by *Quercus coccifera*—*Pistacia palaestina*, likely preceding climax forest in terms of vegetation succession. Formations of forest and maquis are visible at Wadi Essir and along the Ajloun mountains. Formations of garrigue and batha occur in degraded areas of the Mediterranean region that do not support forests under current physical and climatic conditions, such as many parts of Amman and Irbid. These regions are represented by *Sarcopoterium spinosum*, among other small shrubs [7,16].

In the Irano–Turanian region, the climax vegetation lacks substantive tree cover, but some tree species such as *Pistacia atlantica* and *Ziziphus lotus* do occur [11]. Tafila’s oak and juniper forests and Shoubak’s open forests of *Pistacia atlantica* are surrounded by steppes. Trees are uncommon in this habitat though, and Danin posits that these two areas with trees are likely to be relics from a climate that once had more rain [17].

In the Saharo–Sindian–Arabian regional subzone, the availability of water is the main determinant of the type of vegetation found here—often from wadis. The natural vegetation of the Arabian regional subzone has been destroyed in many areas due to ploughing and other agricultural practices for cultivating barley, particularly in runoff areas and wadi beds [11].

Finally, the vegetation of the Saharo–Sindian–Nubo–Sindian local centre of endemism is characterised by species such as *Vachellia gerrardii* and *Ziziphus nummularia* [7]. These species are at their northernmost limits of their distribution and represent the northernmost limits of tropical African vegetation in southwest Arabia.

## 5. Conclusions

Sentinel-2 imaging and extensive field work were utilised to produce two maps of Jordan. The first map is an unsupervised land cover/land use map including 18 distinct classes, and the second is a supervised present-day vegetation map, also including 18 classes of vegetation, which partially overlap with the 18 landcover classes. Remote sensing technology enabled the identification of two types of vegetation that were not represented in the hierarchical cluster analysis based on species composition, namely anthropogenic pine forest and gravel hamma vegetation. The hierarchical cluster analysis suggested that the vegetation was categorised into two major groups: mesic and xeric. The diversity assessment showed that the most species-rich plant communities are found in the evergreen oak forests, with mudflats representing the least species-rich habitat. Analysis of the species composition of the sampling sites enabled the production of a list containing 54 indicator species, which could then be used to identify the type of vegetation at currently unsampled sites. The country is uniquely located at the point where three continents converge, resulting in the presence of four phytogeographical regions: Mediterranean, Arabian regional subzone, Irano–Turanian, and Nubo–Sindian subzone. The vegetation maps produced by previous researchers were tested with regards to their accuracy; the findings revealed the overall accuracy ranged from weak, at 47% accuracy, to medium, at 61% accuracy. For the unsupervised land cover/land use map developed here, the overall accuracy was calculated at 91%, while the supervised current vegetation map had an overall accuracy of 95%. Jordan’s forested regions account for 0.71% of the total land area, with acacia woodland and forests combined totalling 2.3%.

**Author Contributions:** H.T. is the lead author who has contributed to the research conceptualization, methodology, validation, formal analysis, and wrote the original draft preparation. K.G.D. was the principal supervisor who contributed to the methodology, specifically in using clustering analyses in distinguishing vegetation types, and supervision. J.A.-B. assisted with the remote sensing analysis. A.M. and S.N. assisted in describing the vegetation types. All authors have read and agreed to the published version of the manuscript.

**Funding:** This research was funded the Research Training Support Grant of the University of Edinburgh. K.G.D. thanks the Natural Environment Research Council of the United Kingdom for support (NE/T01279X/1).

**Institutional Review Board Statement:** Not applicable.

**Informed Consent Statement:** Not applicable.

**Data Availability Statement:** Data supporting the reported results can be found in the University of Edinburgh, and in the published PhD thesis.

**Acknowledgments:** Appreciation goes to The Royal Botanic Garden, Edinburgh, and The Royal Botanic Garden, Jordan, for their support over the study period. We thank Edward Mitchard and Antje Ahrends for their valuable advice and discussions during the execution of this research.

**Conflicts of Interest:** The authors declare that there is no conflict of interest.

### Appendix A. Confusion Matrices for Assessing the Accuracy of the Maps

**Table A1.** Confusion matrix to assess accuracy of unsupervised land cover/land use map.

TABLE Confusion Matrix	(DF)	(SF)	(SS)	(DS)	(RA)	(IA)	(S)	(WD)	(DM)	(WM)	(XS)	(WB)	(CBR)	(DBR)	(CP)	(RM)	(WB)	(UA)	Total	User's Accuracy (%)	Kappa
Dense Forest (DF)	43	0	0	0	0	0	0	0	0	0	0	0	0	0	0	0	0	0	43	100	0
Sparse Forest (SF)	0	43	0	0	0	1	0	0	0	0	0	0	0	0	0	0	0	0	44	98	0
Shrubland-Steppe (SS)	0	2	15	0	0	0	0	0	0	0	0	0	0	0	0	0	0	0	17	88	0
Desert Scrubs (DS)	0	0	0	18	0	0	0	0	0	0	0	0	0	0	0	0	0	0	18	100	0
Rainfed Agriculture (RA)	0	2	0	0	27	0	0	1	0	0	0	0	0	0	0	1	1	0	32	84	0
Irrigated Agriculture (IA)	1	0	0	0	0	15	0	0	0	0	0	0	0	0	0	0	0	0	16	94	0
Sand (S)	0	1	0	0	0	0	94	2	1	0	0	0	0	0	1	1	0	0	100	94	0
Wadi Deposits (WD)	0	2	0	0	1	0	7	115	0	0	0	0	0	0	3	0	0	0	128	90	0
Dry Mudflat (DM)	0	0	0	0	0	0	0	0	26	0	0	2	0	0	0	0	0	0	28	93	0
Wet Mudflat (WM)	0	0	0	0	0	0	0	0	0	16	0	0	0	0	0	0	0	0	16	100	0
Xerophytic Slope (XS)	0	0	0	0	0	0	0	0	0	0	15	0	0	0	0	0	0	0	15	100	0
Wadi Beds (WB)	0	0	0	1	0	0	0	0	1	0	0	29	0	0	9	0	0	0	40	73	0
Consolidated Basalt Rocks (CBR)	0	0	0	0	0	0	0	0	0	0	0	0	13	0	0	0	0	0	13	100	0
Disintegrated Basalt Rocks (DBR)	0	0	0	0	0	0	1	0	0	0	0	0	0	18	0	0	0	0	19	95	0
Chert Plain (CP)	0	1	0	1	0	1	0	0	0	0	0	4	1	1	73	0	0	0	82	89	0
Rocky Mountain (RM)	0	1	0	0	0	0	1	4	1	0	0	0	0	0	0	12	0	0	15	80	0
Water Body (WB)	0	0	0	0	0	0	0	0	0	0	0	0	0	0	0	0	4	0	4	100	0
Urban Area (UA)	0	0	0	0	0	0	0	0	0	0	0	0	0	0	0	0	0	10	10	100	0
Total	44	52	15	20	28	17	103	118	29	16	15	35	14	19	83	17	5	10	640	0	0
Producer's Accuracy (%)	98	83	100	90	96	88	91	97	90	100	100	83	93	95	88	71	80	100	0	91	0
Kappa	0	0	0	0	0	0	0	0	0	0	0	0	0	0	0	0	0	0	0	0	0.9

**Table A2.** Confusion matrix to assess the accuracy of supervised actual vegetation map.

TABLE Confusion Matrix	(APF)	(AW)	(S)	(GH)	(SD)	(SVA)	(SV)	(M)	(RH)	(GB)	(RV)	(TH)	(DO)	(EO)	(PF)	(IF)	(GSS)	(SH)	Total	User's Accuracy (%)	Kappa
Anthropogenic Fine Forest (APF)	4	0	0	0	0	0	0	0	0	0	0	0	0	0	0	0	0	0	4	100	0
Acacia Woodland (AW)	0	21	0	0	1	0	0	0	0	0	0	0	0	0	0	0	0	0	22	95	0
Steppes Vegetation (S)	1	0	26	1	0	0	0	0	0	0	0	0	0	0	0	0	0	0	28	93	0

Table A2. Cont.

TABLE Confusion Matrix	(APF)	(AW)	(S)	(GH)	(SD)	(SVA)	(SV)	(M)	(RH)	(GB)	(RV)	(TH)	(DO)	(EO)	(PF)	(JF)	(GSS)	(SH)	Total	User's Accuracy (%)	Kappa
Gravel Hammada Vegetation (GH)	0	0	0	47	0	0	1	0	1	0	0	0	0	0	0	0	0	0	49	96	0
Sand Dune Vegetation (SD)	0	2	0	0	15	0	0	0	0	0	0	0	0	0	0	0	0	0	17	88	0
Sandy Gravel Hammada- <i>V. gerardii</i> & <i>A. judaica</i> (SVA)	0	1	0	0	0	7	0	0	0	0	0	0	0	0	0	0	0	0	8	88	0
Saline Vegetation (SV)	0	0	1	0	0	0	6	0	0	0	0	0	0	0	0	0	0	0	7	86	0
Mudflat Vegetation (M)	0	0	0	0	0	0	0	6	0	0	0	0	0	0	0	0	0	0	6	100	0
Runoff Hammada Vegetation (RH)	0	0	0	0	0	0	0	0	15	0	0	0	0	0	0	0	0	0	15	100	0
Garrigue and Batha (GB)	0	0	0	0	0	0	0	0	0	20	0	0	1	0	0	0	0	0	21	95	0
Riparian Vegetation (RV)	0	0	0	0	0	0	0	0	0	0	7	0	0	0	0	0	0	0	7	100	0
Thermophilous Vegetation (TH)	0	0	0	0	0	0	0	0	0	0	0	10	0	0	0	0	0	0	10	100	0
Deciduous Oak Forest (DO)	0	0	0	0	0	0	0	0	0	0	0	0	7	0	0	0	0	0	7	100	0
Evergreen Oak Forest (EO)	0	0	0	0	0	0	0	0	0	0	0	0	0	5	1	0	0	0	6	83	0
Pine Forest (PF)	0	0	0	0	0	0	0	0	0	0	0	0	0	0	8	0	0	0	8	100	0
Juniper Forest (JF)	0	0	0	0	0	0	0	0	0	0	0	0	0	0	0	4	0	0	4	100	0
Granite and Sandstones Shrubland (GSS)	0	0	0	0	0	0	0	0	0	0	0	0	0	0	0	0	4	0	4	100	0
Sandy Gravel Hammada- <i>Scoparia</i> (SH)	0	0	0	0	0	0	0	0	0	0	0	0	0	0	0	0	0	4	4	100	0
Total	5	24	27	48	16	7	7	6	16	20	7	10	8	5	9	4	4	4	227	0	0
Producer's Accuracy (%)	80	88	96	98	94	100	86	100	94	100	100	100	88	100	89	100	100	100	0	95	0
Kappa	0	0	0	0	0	0	0	0	0	0	0	0	0	0	0	0	0	0	0	0	94

## References

- Nicolson, M. Alexander von Humboldt, Humboldtian science and the origins of the study of vegetation. *Hist. Sci.* **1987**, *25*, 167–194. [[CrossRef](#)]
- Whittaker, R.H. Classification of natural communities. *Bot. Rev.* **1962**, *28*, 1–239. [[CrossRef](#)]
- Zohary, M. *Geobotanical Foundations of the Middle East*; Gustav Fischer: Stuttgart, Germany, 1973.
- Por, F.D. The Levantine landbridge. Historical and present patterns. In *Proceedings of the Symposium of the Fauna and Zoogeography of the Middle East*; Krupp, F., Schneider, W., Kinzelbach, R., Eds.; Ludwig Reichert Verlag: Wiesbaden, Germany, 1987; pp. 23–28.
- Eig, A. Les elements et les groupes phytogeographiques auxiliaires dans la flore Palestinienne'. *Repert. Spec. Nov. Regni Veg.* **1931–1932**, *63*, 1–201, *63*, 1–120.
- Eig, A. On the phytogeographical subdivision of Palestine. *Palestine J. Bot.* **1938**, *1*, 4–12.
- White, F.; Léonard, J. Phytogeographical links between Africa and Southwest Asia. *Flora Veg. Mundi* **1991**, *9*, 229–246.
- Léonard, J. *Contribution à L'Étude de la Flore et de la Végétation des Deserts D'Iran (Dasht-e-Kavir, Dasht-e-Lut, Jaz Kurian). Considerations Phytogeographiques sur les Phytochories Irano-Touranienne, Saharo-Sindienne et de la Somalie-Pays Masai*; Jardin Botanique National de Belgique: Meise, Belgium, 1989.
- Long, G. *The Bioclimatology and Vegetation of East Jordan*; UNESCO/FAO: Rome, Italy, 1957.
- Al-Eisawi, D.M. Vegetation of Jordan. In *Studies in the History and Archaeology of Jordan*; Hadidi, A., Ed.; Ministry of Archaeology and Tourism: Amman, Jordan, 1985; Volume 1, pp. 45–56.
- Al-Eisawi, D.M. *Vegetation of Jordan*; UNESCO (ROSTAS): Cairo, Egypt, 1996; p. 284.
- Danin, A. *Distribution Atlas of Plants in the Flora Palaestina Area*; The Israel Academy of Sciences and Humanities: Jerusalem, Israel, 2004.
- Zohary, M.; Feinbrun-Dothan, N. *Flora Palaestina*; The Israel Academy of Sciences and Humanities: Jerusalem, Israel, 1966; Volume 1.
- Albert, A.; Petutschnig, B.; Watzka, M. Zur Vegetation und Flora Jordaniens. In *Reise Durch die Natur Jordaniens*; Waitzbaur, W., Albert, R., Petutschnig, B., Aubrecht, G., Eds.; Biologiezentrum der Oberösterreichischen Landesmuseen: Linz, Austria, 2003.

15. Al-Jaloudy, M.A. FAO Country Pasture Profile for Jordan. Available online: <http://www.fao.org/ag/AGP/agpc/doc/Counprof/Jordan/Jordan.htm> (accessed on 15 November 2019).
16. Kasapligil, B. *Report to the Government of the Hashemite Kingdom of Jordan on an Ecological Survey of the Vegetation in Relation to Forestry and Grazing*; UNESCO/FAO: Rome, Italy, 1956.
17. Danin, A. Desert rocks as plant refugia in the Near East. *Bot. Rev.* **1999**, *65*, 93–170. [[CrossRef](#)]
18. Jensen, J.R. *Introductory Digital Image Processing: A Remote Sensing Perspective*; Pearson Education, Inc.: Glenview, IL, USA, 2016.
19. Homer, C.; Dewitz, J.; Jin, S.; Xian, G.; Costello, C.; Danielson, P.; Gass, L.; Funk, M.; Wickham, J.; Stehman, S.; et al. Conterminous United States land cover change patterns 2001–2016 from the 2016 national land cover database. *ISPRS J. Photogramm. Remote Sens.* **2020**, *162*, 184–199. [[CrossRef](#)]
20. Abbas, A.M.; Al-Kahtani, M.A.; Alfaifi, M.Y.; Elbehairi, S.E.I.; Badry, M.O. Floristic diversity and phytogeography of Jabal Fayfa: A subtropical dry zone, south-west Saudi Arabia. *Diversity* **2020**, *12*, 345. [[CrossRef](#)]
21. Zheng, J.; Fu, H.; Li, W.; Wu, W.; Zhao, Y.; Dong, R.; Yu, L. Cross-regional oil palm tree counting and detection via a multi-level attention domain adaptation network. *ISPRS J. Photogramm. Remote Sens.* **2020**, *167*, 154–177. [[CrossRef](#)]
22. Gibbons, J.W.; Winne, C.T.; Scott, D.E.; Willson, J.D.; Glaudas, X.; Andrews, K.M.; Todd, B.D.; Fedewa, L.A.; Wilkinson, L.; Tsaliagos, R.N.; et al. Remarkable amphibian biomass and abundance in an isolated wetland: Implications for wetland conservation. *Conserv. Biol.* **2006**, *20*, 1457–1465. [[CrossRef](#)]
23. Al-Bakri, J.T.; Salahat, M.; Suleiman, A.; Suifan, M.; Hamdan, M.R.; Khresat, S.; Kandakji, T. Impact of climate and land use changes on water and food security in Jordan: Implications for transcending “The Tragedy of the Commons”. *Sustainability* **2013**, *5*, 724–748. [[CrossRef](#)]
24. Xie, Y.; Sha, Z.; Yu, M. Remote sensing imagery in vegetation mapping: A review. *Plant Ecol.* **2008**, *1*, 9–23. [[CrossRef](#)]
25. Gad, S.; Kusky, T.M. Lithological mapping in the Eastern Desert of Egypt, the Barramiya area, using Landsat thematic mapper (TM). *J. Afr. Earth Sci.* **2006**, *44*, 96–202. [[CrossRef](#)]
26. Shrestha, D.P.; Zinck, J.A. Land use classification in mountainous areas: Integration of image processing, digital elevation data and field knowledge (application to Nepal). *Int. J. Appl. Earth Obs. Geoinf.* **2001**, *3*, 78–85. [[CrossRef](#)]
27. Franceschini, G.; de Leo, E.; Muchoney, D. *Jordan—Land Cover Atlas*; FAO: Rome, Italy, 2019.
28. Ministry of Agriculture. *The Soils of Jordan: Level 1 (Reconnaissance Survey), Report of the National Soil Map and Land Use Project*; MOA: Amman, Jordan, 1993; Volume 1.
29. Mitchard, E. Standard Operating Procedure Manual, Collection of Ground Data Points for Calibration and Validation of a Landcover Map. 2017.
30. Taifour, H.; El-Oqlah, A. *Plants of Jordan—An Annotated Checklist*; Kew Royal Botanic Gardens: London, UK, 2017.
31. Bray, J.R.; Curtis, J.T. An ordination of the upland forest communities of southern Wisconsin. *Ecol. Monogr.* **1957**, *27*, 325–349. [[CrossRef](#)]
32. Ricotta, C.; Podani, J. On some properties of the Bray–Curtis dissimilarity and their ecological meaning. *Ecol. Complex.* **2017**, *31*, 201–205. [[CrossRef](#)]
33. Murtagh, F.; Legendre, P. Ward’s hierarchical agglomerative clustering method: Which algorithms implement Ward’s criterion? *J. Classif.* **2014**, *31*, 274–295. [[CrossRef](#)]
34. Masud, M.A.; Huang, J.Z.; Wei, C.; Wang, J.; Khan, I.; Zhong, M. I-nice: A new approach for identifying the number of clusters and initial cluster centres. *Inf.* **2018**, *466*, 129–151. [[CrossRef](#)]
35. Thorndike, R.L. Who belongs in the family? *Psychometrika* **1953**, *18*, 267–276. [[CrossRef](#)]
36. Dapporto, L.; Ramazzotti, M.; Fattorini, S.; Talavera, G.; Vila, R.; Dennis, R.L.H. Recluster: An unbiased clustering procedure for beta-diversity turnover. *Ecography* **2013**, *36*, 1070–1075. [[CrossRef](#)]
37. Oksanen, J.; Blanchet, F.G.; Kindt, R.; Legendre, P.; O’hara, R.B.; Simpson, G.L.; Solymos, P.; Stevens, M.H.H.; Wagner, H. *Vegan: Community Ecology Package*. R Package Version 2.4-4. 2017. Available online: <https://CRAN.R-project.org/package=vegan> (accessed on 15 November 2019).
38. Dufrêne, M.; Legendre, P. Species assemblages and indicator species: The need for a flexible asymmetrical approach. *Ecol. Monogr.* **1997**, *67*, 345–366. [[CrossRef](#)]
39. Tryjanowski, P.; Morelli, F. Case study 3. Using indicator species analysis IndVal to identify bird indicators of HNV in farmlands from Western Poland. In *Birds as Useful Indicators of High Nature Value Farmlands: Using Species Distribution Models as a Tool for Monitoring the Health of Agro-ecosystems*; Springer International Publishing: Berlin/Heidelberg, Germany, 2017; pp. 107–114.
40. Wolski, G.; Kruk, A. Determination of plant communities based on bryophytes: The combined use of Kohonen artificial neural network and indicator species analysis. *Ecol. Indic.* **2020**, *113*, 106–160. [[CrossRef](#)]
41. Della Rocca, F.; Stefanelli, S.; Pasquaretta, C.; Campanaro, A.; Bogliani, G. Effect of deadwood management on saproxylic beetle richness in the floodplain forests of northern Italy: Some measures for deadwood sustainable use. *J. Insect Conserv.* **2014**, *18*, 121–136. [[CrossRef](#)]
42. de Caceres, M.; Jansen, F. Indicspecies: Relationship between species and groups of sites. R Package Version 1.7.5. 2016. Available online: <https://CRAN.Rproject.org/package=indicspecies> (accessed on 15 November 2019).
43. Rodwell, J.; Dring, J.; Pignatti, S.; Schaminé, J.; Mucina, L. *Scientific Background to the EUNIS Habitat Classification: Phytosociological Relationships of EUNIS Habitats*; Unit of Vegetation Science—Lancaster University & European Topic Centre on Nature Conservation: Paris, France, 1998.

44. Congalton, R.G. Accuracy assessment of remotely sensed data: Future needs and directions. In Proceedings of Pecora 12 Land Information from Space-Based Systems, Sioux Falls, SD, USA, 24–26 August 1993; ASPRS, Bethesda: Rockville, MD, USA, 1994; Volume 12, pp. 383–388.
45. Rwanga, S.S.; Ndambuki, J.M. Accuracy assessment of land use/land cover classification using remote sensing and GIS. *Int. J. Geosci.* **2017**, *8*, 611–622. [[CrossRef](#)]
46. Kattenborn, T.; Leitloff, J.; Schiefer, F.; Hinz, S. Review on Convolutional Neural Networks (CNN) in vegetation remote sensing. *ISPRS J. Photogramm. Remote Sens.* **2021**, *173*, 24–49. [[CrossRef](#)]
47. Congalton, R.G.; Oderwald, R.G.; Mead, R.A. Assessing Landsat classification accuracy using discrete multivariate statistical techniques. *Photogramm. Eng. Remote Sens.* **1983**, *49*, 1671–1678.
48. Pontius, R.G., Jr. Quantification error versus location error in comparison of categorical maps. *Photogramm. Eng. Remote Sens.* **2000**, *66*, 1011–1016.
49. Gong, P.; Liu, H.; Zhang, M.; Li, C.; Wang, J.; Huang, H.; Clinton, N.; Ji, L.; Li, W.; Bai, Y.; et al. Stable classification with limited sample: Transferring a 30-m resolution sample set collected in 2015 to mapping 10-m resolution global land cover in 2017. *Sci. Bull.* **2019**, *64*, 370–373. [[CrossRef](#)]
50. Zohary, M. *Plant Life of Palestine (Israel and Jordan)*; The Ronald Press Company: New York, NY, USA, 1962.
51. Danin, A. Near East ecosystems, plant diversity. In *Encyclopedia of Biodiversity*; Levin, S., Ed.; Academic Press: New York, NY, USA, 2001.
52. Danin, A. Man and the natural environment. In *The Archaeology of Society in the Holy Land*; Levy, T.E., Ed.; Leicester University Press: London, UK, 1995.
53. Ababsa, M. *Atlas of Jordan: History, Territories and Society*; Presses de l'ifpo: Beyrouth, Lebanon, 2013.
54. Zohary, M. A vegetation map of Western Palestine. *J. Ecol.* **1947**, *34*, 1–19. [[CrossRef](#)]
55. Atkinson, K.; Beaumont, P. The forests of Jordan. *Econ. Bot.* **1971**, *25*, 305–311. [[CrossRef](#)]
56. Liphshitz, N.; Biger, G. Ancient dominance of the *Quercus calliprinos*—*Pistacia palaestina* association in Mediterranean Israel. *J. Veg. Sci.* **1990**, *1*, 67–70. [[CrossRef](#)]
57. Soto-Berelov, M. Vegetation Modeling of Holocene Landscapes in the Southern Levant. Ph.D. Thesis, Arizona State University, Tempe, AZ, USA, 2011.