

AperTO - Archivio Istituzionale Open Access dell'Università di Torino

Hot planets around cool stars - two short-period mini-Neptunes transiting the late K-dwarf TOI-1260

This is the author's manuscript

Original Citation:

Availability:

This version is available <http://hdl.handle.net/2318/1948763> since 2023-12-21T07:11:39Z

Published version:

DOI:10.1093/mnras/stab1464

Terms of use:

Open Access

Anyone can freely access the full text of works made available as "Open Access". Works made available under a Creative Commons license can be used according to the terms and conditions of said license. Use of all other works requires consent of the right holder (author or publisher) if not exempted from copyright protection by the applicable law.

(Article begins on next page)

Hot planets around cool stars – two short-period mini-Neptunes transiting the late K-dwarf TOI-1260

I. Y. Georgieva,^{1*} C. M. Persson,¹ O. Barragán², G. Nowak^{3,4}, M. Fridlund^{1,5}, D. Locci⁶, E. Pallé^{3,4}, R. Luque^{3,4}, I. Carleo⁷, D. Gandolfi⁸, S. R. Kane⁹, J. Korth¹⁰, K. G. Stassun¹¹, J. Livingston¹², E. C. Matthews^{13,14}, K. A. Collins¹⁵, S. B. Howell¹⁶, L. M. Serrano⁸, S. Albrecht^{17,18}, A. Bieryla¹⁵, C. E. Brasseur¹⁹, D. Ciardi²⁰, W. D. Cochran²¹, K. D. Colon²², I. J. M. Crossfield²³, Sz. Csizmadia²⁴, H. J. Deeg^{3,4}, M. Esposito²⁵, E. Furlan²⁶, T. Gan²⁷, E. Goffo⁸, E. Gonzales²⁸, S. Grziwa²⁹, E. W. Guenther²⁵, P. Guerra³⁰, T. Hirano^{31,32}, J. M. Jenkins¹⁶, E. L. N. Jensen³³, P. Kabáth³⁴, E. Knudstrup^{17,18}, K. W. F. Lam³⁵, D. W. Latham¹⁵, A. M. Levine¹³, R. A. Matson³⁶, S. McDermott³⁷, H. L. M. Osborne³⁸, M. Paegert¹⁵, S. N. Quinn¹⁵, S. Redfield⁷, G. R. Ricker¹³, J. E. Schlieder³⁹, N. J. Scott¹⁶, S. Seager^{13,40,41}, A. M. S. Smith²⁴, P. Tenenbaum^{16,42}, J. D. Twicken^{16,42}, R. Vanderspek¹³, V. Van Eylen³⁸, J. N. Winn⁴³

Authors' affiliations are shown at the end of the manuscript

Accepted XXX. Received YYY; in original form ZZZ

ABSTRACT

We present the discovery and characterization of two sub-Neptunes in close orbits, as well as a tentative outer planet of a similar size, orbiting TOI-1260 – a low metallicity K6 V dwarf star. Photometry from TESS yields radii of $R_b = 2.33 \pm 0.10 R_\oplus$ and $R_c = 2.82 \pm 0.15 R_\oplus$, and periods of 3.13 and 7.49 days for TOI-1260 b and TOI-1260 c, respectively. We combined the TESS data with a series of ground-based follow-up observations to characterize the planetary system. From HARPS-N high-precision radial velocities we obtain $M_b = 8.6^{+1.4}_{-1.5} M_\oplus$ and $M_c = 11.8^{+3.4}_{-3.2} M_\oplus$. The star is moderately active with a complex activity pattern, which necessitated the use of Gaussian process regression for both the light curve detrending and the radial velocity modelling, in the latter case guided by suitable activity indicators. We successfully disentangle the stellar-induced signal from the planetary signals, underlining the importance and usefulness of the Gaussian Process approach. We test the system's stability against atmospheric photoevaporation and find that the TOI-1260 planets are classic examples of the structure and composition ambiguity typical for the 2 – 3 R_\oplus range.

Key words: Planetary systems — planets and satellites: individual: TOI-1260b, c – planets and satellites: atmospheres – planets and satellites: composition – techniques: photometric – techniques: radial velocities, stars: low-mass

1 INTRODUCTION

Thanks to space-based photometry from missions like Convection, Rotation and planetary Transits (CoRoT, Baglin et al. 2006), Kepler

and K2 (Borucki et al. 2010; Howell et al. 2014) and Transiting Exoplanet Survey Satellite (TESS, Ricker et al. 2015), the detection of shallow transits caused by small planets ($\lesssim 4 R_\oplus$) around faint stars has been made possible. The current exoplanet census shows that the most commonly detected population of planets is well represented by the so-called sub-Neptunes ($2 \lesssim R_\oplus \lesssim 4$) and

* E-mail: iskra.georgieva@chalmers.se

rocky super-Earths ($1 \lesssim R_{\oplus} \lesssim 1.5$), with the radius valley (Lopez & Fortney 2013; Owen & Wu 2013; Fulton et al. 2017; Van Eylen et al. 2018, 2021), characterized by a paucity of planets between 1.5 and $2 R_{\oplus}$ (Fulton et al. 2017). This range has been shown to shift to smaller radii for low-mass stars (Fulton & Petigura 2018; Wu 2019; Cloutier & Menou 2020; Van Eylen et al. 2021). An interesting observation about this population is the apparent ambiguity of the members' structures and compositions. Valencia et al. (2007) first discussed the continuous wide range of planet compositions for a given mass and radius, while discrete reference planet models by Zeng et al. (2016, 2019) show possible combinations of a rocky core with a H-He envelope, water-dominated worlds, as well as combinations of rock and ice bounded by H-He envelopes. This ambiguity is the result of the observed overlap between both the masses and radii of the two populations. Otegi et al. (2020) report the transition range between sub-Neptunes to super-Earths to be $5 - 25 M_{\oplus}$ and $2 - 3 R_{\oplus}$, which the TOI-1260 planets presented in this work comfortably fall in.

Moving toward solving the aforementioned composition ambiguity would require understanding the dependence of close-in ($P_{\text{orb}} < 10$ days) small ($2 - 3 R_{\oplus}$) planets on parameters like the stellar mass (Fulton & Petigura 2018), metallicity (Wilson et al. 2018; Dong et al. 2018), age (Berger et al. 2020), high-energy irradiation (McDonald et al. 2019a), as well as the widely studied planetary mass, radius, period/semi-major axis. That said, while relatively precise radii are available from TESS, to place planets in the context of structure and composition models, we need precise mass estimates, and lots of them, as they are an indispensable piece of this puzzle.

The acquisition of precise masses is made possible thanks to high precision radial velocity (RV) measurements, performed by second generation spectrographs, such as ESO's HARPS (Mayor et al. 2003) and HARPS-N (Cosentino et al. 2012), HIRES (Vogt et al. 1994), CARMENES (Quirrenbach et al. 2014, 2018), and more recently ESPRESSO (Pepe et al. 2010, 2021), EXPRES (Jurgenson et al. 2016) and more. Unfortunately, stellar activity can often be a complicating factor in obtaining accurate orbital solutions for the planet candidates. Great care and caution must be taken in accounting for this activity, the complexity of which may necessitate the use of more sophisticated methods than sinusoid fitting. This problem is further exacerbated the less massive and farther out from its star a planet is, as the precision required for a solid detection grows accordingly.

In this context, we present the discovery and characterization of the TOI-1260 system – a moderately active K6 V dwarf hosting two close-in ($P < 10$ days) transiting sub-Neptunes, as well as a tentative outer planet of similar size and an implied longer period.

The paper is organized as follows. Section 2 contains a summary of the space and ground-based observations of TOI-1260 as well as frequency analysis of the RVs and activity indicators, Sect. 3 describes the stellar modelling, and in Sect. 4 we present our joint RV and transit analysis. In Sect. 5 we discuss our findings and results and we summarize our conclusions in Sect. 6.

2 OBSERVATIONS

Apart from space-based photometry from TESS, we obtained ground-based follow-up photometry from the Las Cumbres Observatory Global Telescope (LCOGT, Brown et al. 2013). We searched for stellar companions using Adaptive Optics (AO) and speckle

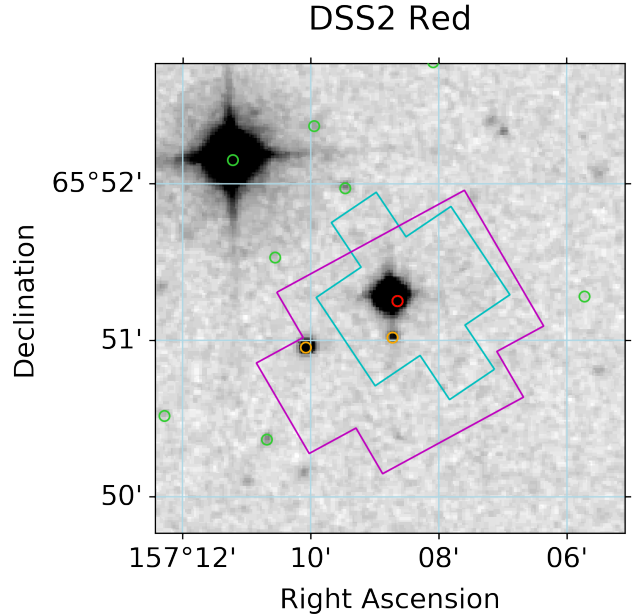


Figure 1. $3' \times 3'$ DSS2 (red filter) image with the Sectors 14 and 21 SPOC photometric apertures outlined in cyan and magenta, respectively. Colored circles denote the positions of *Gaia* DR2 sources within $2'$ of TOI-1260.

imaging. To measure the planetary masses we observed TOI-1260 with HARPS-N.

2.1 TESS photometry

TESS first observed TOI-1260 in Sector 14 between 2019 Jul 18 and 2019 Aug 15 on camera 4, CCD 3, and again in Sector 21 from 2020 Jan 21 to 2020 Feb 18 on camera 2, CCD 2. The target identifiers, coordinates, proper motion and magnitudes are listed in Table 1. Figure 1 shows a $3' \times 3'$ digitized sky survey 2 (DSS-2, red filter) image centred on TOI-1260, marked by the red circle. The orange circles inside the Science Processing Operations Center (SPOC, Jenkins et al. 2016) apertures of the two sectors are potentially contaminating sources (TIC 841176092 with $V_{\text{mag}} \approx 19$ and TIC 138477027 with $V_{\text{mag}} \approx 16.2$ at $13.9''$ and $40''$ away from TOI-1260, respectively). However, the difference image centroid analyses performed for both TOIs detected in the SPOC pipeline, together with the ground-based follow-up observations discussed in the following sections, exclude this from being the case. The SPOC pipeline (Twicken et al. 2010; Morris et al. 2017) uses Simple Aperture Photometry (SAP) to generate stellar light curves, where common instrumental systematics, including dilution, are removed via the Presearch Data Conditioning (PDCSAP) algorithm (Smith et al. 2012; Stumpe et al. 2012). The TESS data were sampled at 2-min cadence and, after removing cadences flagged as potentially affected by anomalous events, the PDCSAP flux extracted from the FITS files produced by the SPOC pipeline (grey-dotted light curves in both panels of Fig. 2) was used for both datasets to conduct the transit search.

Our transit search was realized via the MATLAB-based package EXOTRANS (Grziwa et al. 2012). EXOTRANS utilizes filtering routines based on the Stationary Wavelet Transform to remove intrinsic stellar variability as well as signals at known frequencies to allow searching for additional transits. The search itself is performed using an optimized version of the traditional well-established BLS

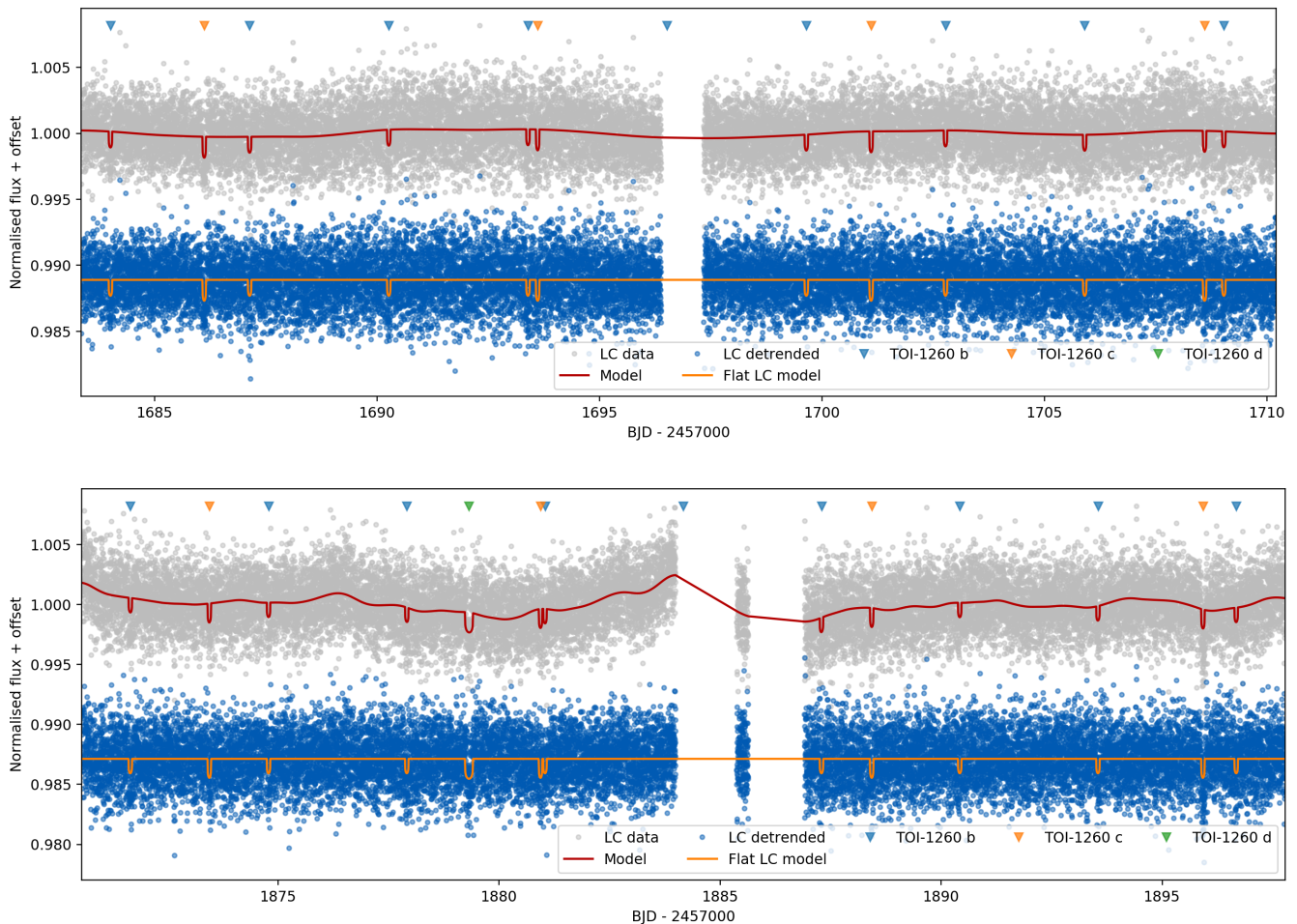


Figure 2. PDCSAP light curve in grey with GP model and transits overplotted in red, and resulting detrended light curve in blue for Sector 14 (top panel) and Sector 21 (bottom panel). The single transit event is visible in the bottom panel at 1879.3 days here plotted with a duration consistent with an arbitrary period of 40 days for visualization. Individual transits are marked with triangles.

algorithm (Kovács et al. 2002), as described in Ofir (2014). TOIs 1260.01 and 1260.02 were first discovered in the SPOC transit search (Jenkins 2002; Jenkins et al. 2010, 2017) with periods of 3.13 and 7.49 days, respectively, and announced in the TESS SPOC data validation reports (DVR, Twicken et al. 2018) and the TOI release portal¹. We note that 1260.02 is missing from the DVR for Sector 21. Instead, in addition to 1260.01, a signal at 16.613 days was reported but was not given TOI status, likely due to the significant difference in depth between its two apparent transits, the second of which coincides with a transit of 1260.02. This is further discussed in Sect. 4.1.

EXOTRANS detected the two candidates with depths of 1222 ppm and 1685 ppm in both TESS sectors, and periods in agreement with the publicly announced 1260.01 and 1260.02, respectively. As an additional check, we further analysed the light curve data using the *lightkurve* package (Lightkurve Collaboration et al. 2018). We discovered no significant odd/even difference or a sign of a secondary eclipse. This concurs with the results in the DVRs, where the odd/even depth test and difference image centroid test also found no evidence for either signal being due to an eclipsing binary or

background eclipsing binary. Encouraged by the agreement between the different pipelines, we prioritized TOI-1260 and qualified it as a promising target for follow-up observations.

Due to the complex variability TOI-1260 exhibits, we chose to remove the low frequency signals in the light curves using a Gaussian process (GP). We use the Python package *citlalicue*², which is a wrapper of *george* (Foreman-Mackey et al. 2014; Ambikasaran et al. 2016) and *pytransit* (Parviainen 2015). Briefly, *citlalicue* performs a GP regression (given a covariance function as provided by *george*) together with transit models (*pytransit*) to the data. The best fitting model is computed by likelihood maximization. This generates a model that contains variability and transits. *citlalicue* then removes the light curve variability model from the data to create a flattened normalized light curve with only transits.

We ran *citlalicue* with a GP created with a Matérn 3/2 covariance function together with a model of the two transiting planet candidates and an additional single transit we identified in Sector 21 at $T_0 \sim 1879.32$. Since we are not interested in the nature of the variability signal, we chose the Matérn 3/2 kernel because of

¹ <https://tess.mit.edu/toi-releases/>

² <https://github.com/oscaribv/citlalicue>

Table 1. Main identifiers, equatorial coordinates, proper motion, parallax, optical and infrared magnitudes, and fundamental parameters of TOI-1260.

Parameter	Value	Source
<i>Main identifiers</i>		
TIC	355867695	ExoFOP ^a
2MASS	J10283500+6551163	ExoFOP
UCAC4	780-023265	ExoFOP
WISE	J102834.71+655115.5	ExoFOP
APASS	59325479	ExoFOP
<i>Equatorial coordinates, parallax, and proper motion</i>		
R.A. (J2000.0)	10 ^h 28 ^m 34.56 ^s	<i>Gaia</i> DR3 ^b
Dec. (J2000.0)	+65°51′15.07″	<i>Gaia</i> DR3
π (mas)	13.6226 ± 0.0147	<i>Gaia</i> DR3
μ_{α} (mas yr ⁻¹)	-177.340 ± 0.012	<i>Gaia</i> DR3
μ_{δ} (mas yr ⁻¹)	-81.693 ± 0.013	<i>Gaia</i> DR3
<i>Optical and near-infrared photometry</i>		
<i>TESS</i>	10.812 ± 0.006	TIC v8 ^c
<i>G</i>	11.5655 ± 0.0.0028 ^d	<i>Gaia</i> DR3
<i>B_p</i>	12.2955 ± 0.0030 ^d	<i>Gaia</i> DR3
<i>R_p</i>	10.7415 ± 0.0038 ^d	<i>Gaia</i> DR3
<i>B</i>	13.259 ± 0.088	APASS
<i>V</i>	11.875 ± 0.165	APASS
<i>g</i>	12.702 ± 0.060	APASS
<i>J</i>	9.698 ± 0.023	2MASS
<i>H</i>	9.105 ± 0.027	2MASS
<i>K_s</i>	8.950 ± 0.022	2MASS
<i>W1</i>	8.891 ± 0.023	AllWISE
<i>W2</i>	8.964 ± 0.020	AllWISE
<i>W3</i>	8.880 ± 0.023	AllWISE
<i>W4</i>	9.215 ± 0.453	AllWISE

^a<https://exofop.ipac.caltech.edu/>^bGaia Collaboration et al. (2021)^cStassun et al. (2018b)^dUncertainties from the VizieR Catalogue, Ochsenbein et al. (2000)

its flexibility in dealing with stochastic correlation. We performed individual runs for each sector given that light curve variability scales may be different between the sectors.

The PDCSAP light curves of both sectors are shown in Fig. 2, along with the flattened light curves and transit models. We use these flattened light curves for our joint analysis in Sect. 4. The single transit is visible in the lower panel of Fig. 2 and its depth is approximately 1430 ppm. The feature is shown plotted assuming an arbitrary period of 40 days, which is within the range of possible periods for this possible outer planet (more on this in Sect. 4.1).

2.2 Light curve follow-up

As a further step towards confirming the planets and to try and improve the system parameters, we acquired ground-based time-series follow-up photometry of TOI-1260 as part of the TESS Follow-up Observing Program (TFOP)³. We used the TESS Transit Finder, which is a customized version of the Tapir software package (Jensen 2013), to schedule our transit observations. The photometric data were extracted using AstroImageJ (Collins et al. 2017).

³ <https://tess.mit.edu/followup>

2.2.1 LCOGT

We observed a full transit of 1260.01 on 2020 Jan 04 and parts of the 1260.02 SPOC ephemeris 3σ window on 2019 Dec 03 and 2020 February 01 from LCOGT 1.0 m network node at McDonald Observatory. All observations were in the Pan-STARSS z -short filter. The 4096×4096 LCOGT SINISTRO cameras have an image scale of $0''.389$ per pixel, resulting in a $26' \times 26'$ field of view. The 1260.01 images were defocused and have typical stellar point-spread-functions (PSFs) with full-width-half-maximum (FWHM) $\sim 8''.3$, and circular apertures with radius $\sim 9''.7$ were used to extract the differential photometry. Regarding both epochs of TOI 1260.02, the first observations cover a partial (half) transit, and on the second occasion the observations cover a fraction of the transit ingress. Neither dataset shows a hint of the planet signal. This can be caused by data reduction systematics given the partial coverage of the transits and the relatively low light curve precision. Therefore we do not use these data for further analysis. The photometry ruled out a transit on target and ruled out possible contaminating nearby eclipsing binaries (NEBs) within $2'.5$ of the target star over the observing window.

2.2.2 KeplerCam

We observed overlapping transits of TOIs 1260.01 and 1260.02 (assuming the initial SPOC Sector 14 nominal ephemerides) in Sloan i' -band on 2019 November 18 from KeplerCam on the 1.2 m telescope at the Fred Lawrence Whipple Observatory. The 4096×4096 Fairchild CCD 486 detector has an image scale of $0''.336$ per pixel, resulting in a $23'.1 \times 23'.1$ field of view. The observations were focused and the resulting images have typical stellar PSFs with a FWHM of $\sim 1''.5$. Circular apertures with radius $\sim 4''.7$ were used to extract the differential photometry. The on-target light curve was inconclusive, but possible contaminating NEBs within $2'.5$ of the target star were ruled out over the 183 minute observing window.

2.3 AO with Gemini-North/NIRI

It is crucial that close visual companions are identified, since these can dilute the lightcurve and thus alter the planet properties, or even be the source of false positive signals, in the case that the visual companion is itself a binary (see e.g. Ciardi et al. 2015). We search for such companions using AO imaging using the NIRI instrument (Hodapp et al. 2003) at the Gemini-North telescope. We collected a total of 9 images of TOI-1260 on 2019 Nov 25, using the narrow-band Bry filter which falls within the K-band. Each image had an exposure time of 3.9 s, and we dithered the telescope between each image. This allows for a sky background frame to be constructed from the science data itself, by median combining these dithered frames. Our data reduction process consisted of bad pixel removal, flat-correction and sky-background subtraction, and aligning the stellar position between frames so they could be coadded. We searched for companions in the final image visually, and did not identify companions anywhere in the field of view, which extends to at least $13''$ from the star in all directions. We used a fake star injection technique to measure the sensitivity of the data. In this process we sequentially injected fake PSFs (constructed from the measured stellar PSF, and with peak brightness 3 times the local dispersion level) into the image, every 132 mas in the radial direction and at 8 distinct position angles for each radius. We measured the significance of each fake PSF, and linearly scale this value to the flux at which a companion would be detected with 5σ significance.

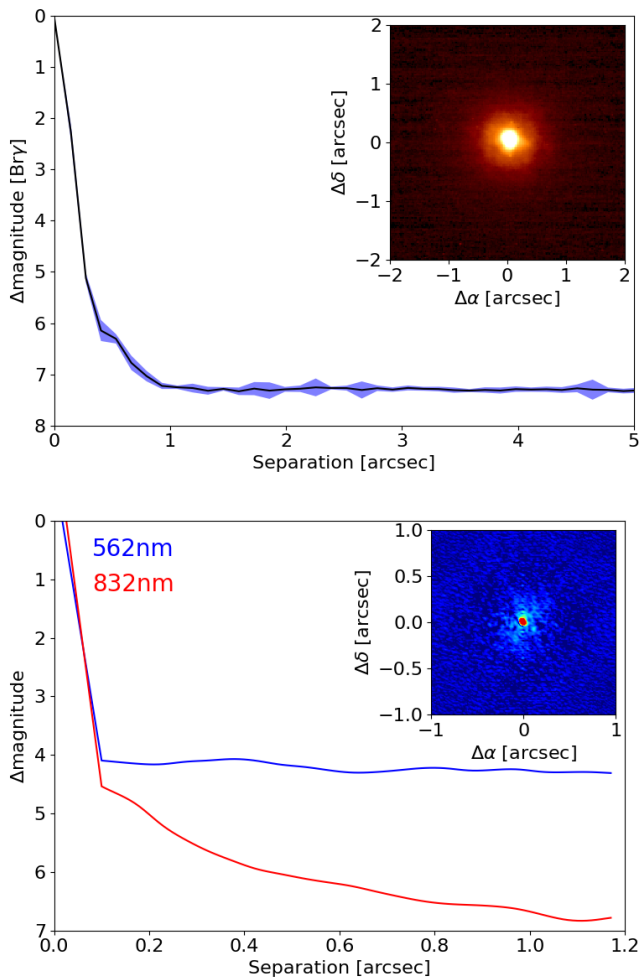


Figure 3. Upper panel: sensitivity to faint visual companions of our Gemini/NIRI observations of TOI-1260. Companions 5 magnitudes fainter than the host star can be detected beyond 270 mas and no companions are seen anywhere in the field of view, which extends at least $13''$ from the target in all directions. The inset shows the central portion of the image, centered on the star, and the star appears single to the limit of our resolution. Lower panel: $5\text{-}\sigma$ sensitivity curve of speckle imaging by Gemini North/Alopeke showing a reconstructed image of the field. No bright companions are detected within $1.2''$.

The quoted sensitivity at each radius is the median sensitivity across the 8 position angles. We are sensitive to companions 5 magnitudes fainter than the star at separations beyond 270 mas, and reach a contrast limit of $\Delta K = 7.3$ mag in the wide field. The upper panel in Fig. 3 shows the sensitivity of our survey, and the inset shows an image of the target itself.

We note that the above described procedure has been used in a wide range of papers (see e.g. Günther et al. 2019; Rodriguez et al. 2019; Kostov et al. 2019).

2.4 Gemini-North/Alopeke speckle imaging

While AO imaging is sensitive in the infrared and at wider separations from the target, speckle imaging explores the closer vicinity of the target at optical wavelengths.

TOI-1260 was observed on 2020 Feb 16 using the ‘Alopeke

speckle instrument on Gemini-North⁴. ‘Alopeke provides simultaneously speckle imaging in two bands, 562 nm and 832 nm, with output data products including a reconstructed image, and robust limits on companion detections (Howell et al. 2011). Figure 3 (lower panel) shows our resulting contrast curves and the reconstructed 832 nm speckle image. We find that TOI-1260 is a single star with no companion brighter than about 5–7 magnitudes detected within $1''.2$. ‘Alopeke observations provide resulting spatial resolutions of 0.017 mas in the blue, and 0.026 mas in the red, yielding an inner working angle of 1.18 and 1.84 au at the distance to TOI-1260, respectively.

2.5 High-dispersion spectroscopy with TNG/HARPS-N

Currently, RV measurements are invaluable for the purpose of planetary mass determination. Such observations, however, also allow for co-added stellar spectra to be obtained, which are used to model the star and thus obtain more accurate stellar parameters.

Between 2020 Jan 14 and 2020 June 13 we collected 33 spectra with the HARPS-N spectrograph (Cosentino et al. 2012, $R \approx 115\,000$) mounted at the 3.58-m Telescopio Nazionale Galileo (TNG) of Roque de los Muchachos Observatory in La Palma, Spain, under the observing programmes CAT19A_162, ITP19_1 and A40TAC_22⁵. The exposure time was set to 1350–3600 s, based on weather conditions and scheduling constraints, leading to a SNR per pixel of 21–74 at 5500 Å. The spectra were extracted using the off-line version of the HARPS-N Data Reduction Software (DRS) pipeline (Cosentino et al. 2014), version 3.7. Absolute RVs and spectral activity indicators – bisector inverse slope (BIS), full-width at half maximum (CCF_FHWM), contrast (CCF_CTR) of the cross-correlation function (CCF) and Mount-Wilson S-index – were measured using an on-line version of the DRS, the YABI tool, by cross-correlating the extracted spectra with a K5 mask (Baranne et al. 1996). We also used *serval* (Zechmeister et al. 2018) code to measure relative RVs by the template-matching, chromatic index (CRX), differential line width (dLW), and $H\alpha$ index. The uncertainties of the RVs measured with *serval* are in the range $0.9\text{--}3.1\text{ m s}^{-1}$, with a mean value of 1.6 m s^{-1} . Table A1 gives the time stamps of the spectra in BJD_{TDB}, *serval* relative RVs along with their 1σ error bars, and spectral activity indicators measured with YABI and *serval*. In the joint RV and transit analysis presented in Section 5 we used relative RVs measured from HARPS-N spectra with *serval* by the template-matching technique.

2.5.1 Frequency analysis of TNG/HARPS-N data

In order to search for the Doppler reflex motion induced by the transiting planetary candidates and unveil the presence of possible additional signals we performed a frequency analysis of the RVs and spectral activity indicators measured from TNG/HARPS-N spectra. We calculated the generalised Lomb-Scargle (GLS) periodograms (Zechmeister & Kürster 2009) of the available time series and computed the theoretical 10%, 1%, and 0.1% false alarm probability (FAP) levels (Fig. 4). The 151.8 day time baseline of the measurements translate into a frequency resolution of $0.006586\text{ days}^{-1}$.

The strongest peak in the GLS periodogram of RVs

⁴ <https://www.gemini.edu/sciops/instruments/alopeke-zorro/>

⁵ 20 spectra were obtained from the Spanish CAT19A_162 programme (PI: Nowak), 12 spectra from ITP19_1 programme (PI: Pallé) and one spectrum from A40TAC_22 programme (PI: Gandolfi).

(FAP < 0.1%) has a frequency of ~ 0.031 , i.e. a period of ~ 32.5 days (panel (a) of Fig. 4). Peaks at this frequency are also the strongest ones in the GLS periodograms of spectral activity indicators measured with the DRS pipeline, especially in the periodogram of CCF-FWHM (panel (e) of Fig. 4) and in the periodogram of dLW measured with *serval* (panel (h) of Fig. 4). The GLS periodogram of residuals after fitting two sinusoids with periods and phases corresponding to 1260.01 ($f_b = 0.320 \pm 0.002 \text{ days}^{-1}$, $P_b = 3.13 \pm 0.02$ days) and 1260.02 ($f_c = 0.133 \pm 0.002 \text{ days}^{-1}$, $P_c = 7.49 \pm 0.11$ days) shows two highly significant peaks (FAP < 0.1%) at the frequency of $0.031^{+0.002}_{-0.003} \text{ days}^{-1}$ and its first harmonic. This clearly shows that the strongest signal in the radial velocities has its origin in stellar activity. The RV residuals after a joint model presented in Sect. 4 (panel (c) of Fig. 4) show no further significant peaks. In the GLS periodograms of the activity indicators there are no peaks at the frequencies of the candidates.

The above results show that due to the suboptimal quantity and sampling of the data, a simple periodogram inspection is not suitable for such subtle and sophisticated analysis as required by this system. For the global model we thus implement a more advanced technique as demonstrated in Sect. 4.

3 STELLAR MODELLING

3.1 Spectral analysis

We modelled the co-added high resolution ($R = 115\,000$) HARPS-N spectra with a signal-to-noise of 125 at 5800 \AA with the spectral analysis package *SME* (Spectroscopy Made Easy; Valenti & Piskunov 1996; Piskunov & Valenti 2017) version 5.22. This software package matches observations to synthetic stellar spectra calculated from grids of atmosphere models using a χ^2 -minimising procedure. We used the MARCS 2012 (Gustafsson et al. 2008) grid and also checked the final models with the ATLAS12 model spectra (Kurucz 2013). The line data was taken from VALD (Ryabchikova et al. 2015). We derived the effective temperature (T_{eff}), the stellar surface gravity ($\log g$), abundances, the projected stellar rotational velocity ($V \sin i_\star$), and the macroturbulent velocity (V_{mac}), following the procedures described in Persson et al. (2018) and Fridlund et al. (2017). In summary, we used the line wings of $H\alpha$ to derive T_{eff} , and $\log g$ was modelled with the line wings of the Ca I $\lambda\lambda 6102$, 6122 , and 6162 triplet, and the $\lambda 6439$ line. Due to the low T_{eff} , and hence the weak line wings of $H\alpha$ and the large number of metal lines contaminating the diagnostic line wings, we also used the Na doublet $\lambda\lambda 5889$ and 5896 sensitive to both T_{eff} and $\log g$ to check our model. $V \sin i_\star$, V_{mac} , and the iron and calcium abundances, $[\text{Fe}/\text{H}]$ and $[\text{Ca}/\text{H}]$, were modelled with narrow and unblended lines between $\lambda 6000$ and $\lambda 6500$, and the $[\text{Na}/\text{H}]$ abundance with lines between $\lambda 5600$ and $\lambda 6200$. The abundances of Ca and Na were similar to Fe. The macroturbulent and radial velocities were found to be 1.5 km s^{-1} and -16.6 km s^{-1} , respectively, while the microturbulent velocity, V_{mic} , was fixed to 1 km s^{-1} .

To check the *SME* results we also used the empirical *SpecMatch-Emp* (Yee et al. 2017) code characterising stars based on their optical spectra. The software compares the observed spectrum to a spectral library of more than 400 well-characterised stars with spectral classes M5 to F1 observed by Keck/HIRES. Since the library stars often have their radii calibrated using interferometry, the direct output is T_{eff} , R_\star , and $[\text{Fe}/\text{H}]$. Before running the code, we transformed our co-added HARPS-N spectra into the format of Keck/HIRES spectra used by *SpecMatch-Emp* as outlined in Hirano et al. (2018).

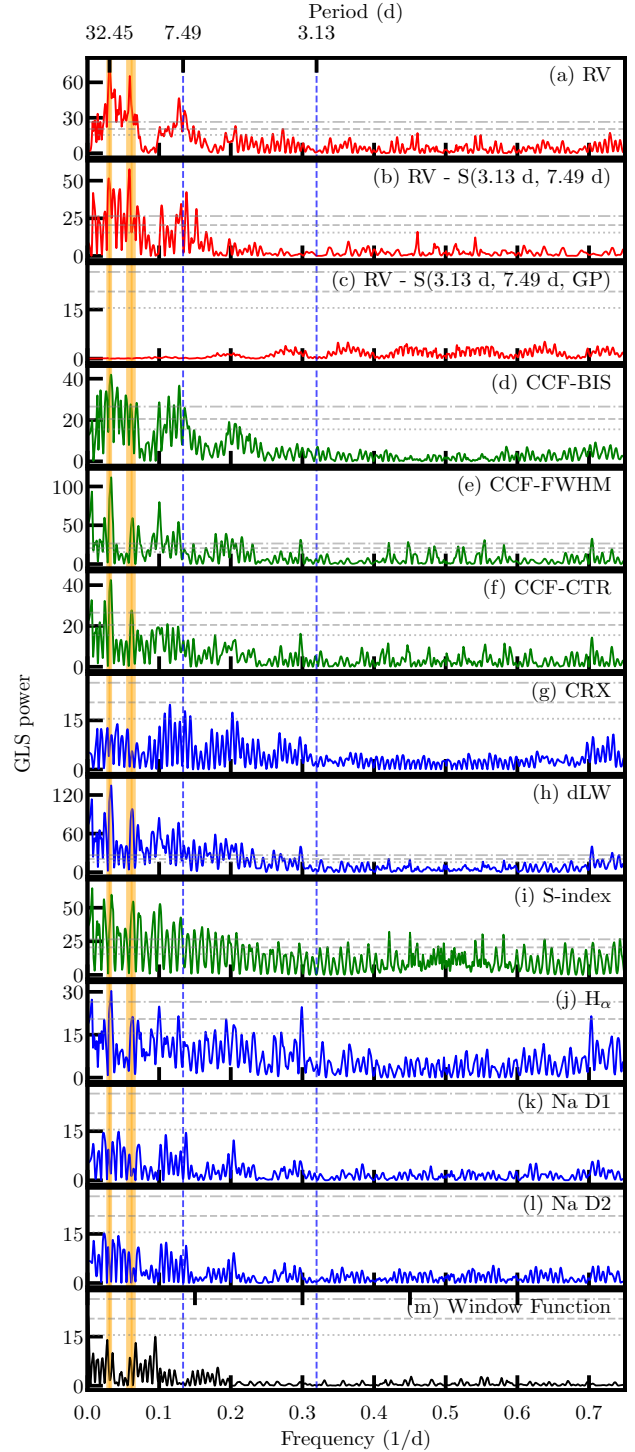


Figure 4. Generalized Lomb-Scargle periodograms of RVs of TOI-1260 (a), their residuals (b) after fitting two sinusoids with periods and phases corresponding to 1260.01 ($f_b = 0.320 \pm 0.002 \text{ days}^{-1}$, $P_b = 3.13 \pm 0.02$ days) and 1260.02 ($f_c = 0.133 \pm 0.002 \text{ days}^{-1}$, $P_c = 7.49 \pm 0.11$ days), marked as vertical blue dashed lines, and their residuals (c) after fitting final joint model presented in Sect. 4. Vertical orange areas present frequency of the GP signal ($f_{\text{GP}} = 0.031^{+0.002}_{-0.003} \text{ days}^{-1}$, $P_{\text{GP}} = 32.45^{+3.70}_{-2.14}$ days) and its first harmonic. Panels plotted in green show periodograms of spectral activity indicators measured with DRS pipeline and panels plotted in blue activity indicators measured with *serval*. Last panel (m) presents the window function of the data. Horizontal grey lines show the theoretical FAP levels of 10% (dotted line), 1% (dashed line), and 0.1% (dash-dotted line) for each panel.

The models are in excellent agreement and we list the results in Table 2 along with the effective temperature from Gaia as a comparison. We adopt the SME results for the modelling of the stellar mass and radius in the following section.

3.2 Stellar mass and radius

We started with an independent determination of the stellar radius, and performed an analysis of the broadband spectral energy distribution (SED) of the star together with the *Gaia* DR2 parallaxes adjusted by +0.08 mas to account for the systematic offset reported by Stassun & Torres (2018). We followed the procedures described in Stassun & Torres (2016) and Stassun et al. (2017, 2018a) and pulled the JHK_S magnitudes from the 2MASS catalogue, the $W1 - W4$ magnitudes from the WISE catalogue, and the $GG_{BP}GRP$ magnitudes from the *Gaia* database. Together, the available photometry spans the stellar SED over the wavelength range 0.4–22 μm . We performed a fit using NextGen stellar atmosphere models, with T_{eff} , $[\text{Fe}/\text{H}]$, and $\log g$ adopted from the spectroscopic analysis with SME as priors. The only additional free parameter is the extinction (A_V), which we restricted to the maximum line-of-sight value from the dust maps of Schlegel et al. (1998). The resulting fit, shown in Fig. 5, is very good with a reduced χ^2 of 1.1 and best-fit $A_V = 0.02 \pm 0.02$. Integrating the (unreddened) SED model gives the bolometric flux at Earth, $F_{\text{bol}} = 7.63 \pm 0.18 \times 10^{-10} \text{ erg s}^{-1} \text{ cm}^{-2}$. Taking the F_{bol} and T_{eff} together with the *Gaia* DR2 parallax, gives the stellar radius. Using this radius together with the spectroscopic $\log g$, we obtain an empirical mass estimate.

In order to obtain a uniform set of stellar parameters we used the Python code `isochrones` (Morton 2015), an MCMC fitting tool of stellar properties based on an interface interacting with the MIST (Choi et al. 2016) stellar evolution tracks. We fitted the *Gaia* DR2 parallax and the 2MASS JHK photometry, the four WISE magnitudes and the B - and V -bands from APASS, with priors on T_{eff} , $\log g$, and $[\text{Fe}/\text{H}]$ from SME using MultiNest (Buchner et al. 2014) to sample the joint posteriors. We find a bolometric luminosity of $0.139 \pm 0.005 L_{\odot}$.

The above results were checked with the Bayesian Param 1.5 (da Silva et al. 2006) on-line code using the PARSEC isochrones (Bressan et al. 2012) and the same input as for `isochrones`.

We also computed mass and radius from the empirical calibration equations by Torres (2010) from T_{eff} , $\log g$, and $[\text{Fe}/\text{H}]$. Finally, we used the stellar mass-radius relations for low-mass stars from Boyajian et al. (2012) to compute the stellar mass from the radius obtained from `isochrones`.

The stellar parameters found above indicate that this star is a K6 V star supported by the empirical relations of Stassun et al. (2012) suggesting that the activity-driven radius inflation is at most $\sim 2\%$, indicating a star on the main-sequence. This is also consistent with the age estimates with Param 1.5 of $8.4^{+4.7}_{-3.7}$ Gyr.

All results of the stellar mass and radius are in very good agreement and are listed in Table 3 along with a typical mass and radius for an K6 V star for comparison. We adopt the stellar mass and radius from `isochrones` in our joint modelling of the system in Sect. 4 and list our adopted parameters for the modelling in Table 4.

3.3 Stellar activity and rotation period

We note that both Ca II H & K lines are seen in emission in the HARPS-N spectra which indicates that the star is moderately active. The activity offers a way to estimate the rotation period. We first

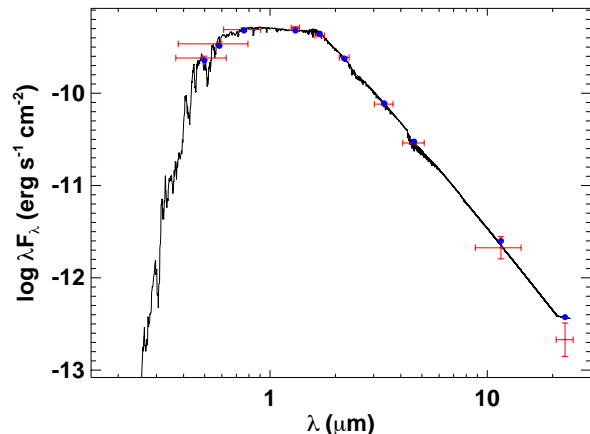


Figure 5. Spectral energy distribution of TOI-1260. Red symbols represent the observed photometric measurements, where the horizontal bars represent the effective width of the passband. Blue symbols are the model fluxes from the best-fit NextGen atmosphere model (black).

computed the average S-index from the time series to be 1.13 ± 0.08 which was converted to $\log(R'_{HK}) = -4.86 \pm 0.03$ (Suárez Mascareño et al. 2015). This was used together with the empirical relation for late-type stars from Suárez Mascareño et al. (2015, 2016) and the star's color to predict a rotation period of 34 ± 2 days. This is within 1σ of the 22 ± 10 days estimate obtained from R_{\star} together with the spectroscopically determined $V \sin i_{\star}$, assuming that the star is equator-on oriented.

The activity predicts an age of 4.1 ± 0.2 Gyr, from the empirical relations of Mamajek & Hillenbrand (2008) which is considerably lower than derived above although still within the large uncertainties. The estimate from gyrochronology has, however, the following two caveats: this star is somewhat cooler than the nominal range of applicability of the relations, and secondly, recent work have suggested that K-dwarfs experience a stall in their spindown (Curtis et al. 2020), so that such stars can be considerably older than their observed rotation or activity may otherwise suggest.

3.4 Population membership

The kinematics of this high proper motion star can be used to compute probabilities of membership in different populations in the Galaxy. Using the data in Table 1 and the methodology of Reddy et al. (2006), we find galactic velocity components of $U = -43.42 \text{ km s}^{-1}$, $V = -45.96 \text{ km s}^{-1}$, $W = -30.95 \text{ km s}^{-1}$. We converted these velocities to the local standard of rest of the Sun to $U_{lsr} = -33.42 \pm 0.16 \text{ km s}^{-1}$, $V_{lsr} = -40.66 \pm 0.12 \text{ km s}^{-1}$ and $W_{lsr} = -23.75 \pm 0.15 \text{ km s}^{-1}$. This results in a probability of the star belonging to the thin disk population of $P(\text{thin}) = 0.95 \pm 0.02$, and to the thick disk $P(\text{thick}) = 0.0516 \pm 0.0002$, and a vanishingly low probability of the star being old enough to belong to the halo population. The thin disk of the Galaxy is expected to have formed 8.8 ± 1.7 Gyr ago (del Peloso et al. 2005) which is consistent with the derived ages.

4 JOINT RV AND TRANSIT ANALYSIS

We use the open source software `pyaneti` (Barragán et al. 2019a), which uses a Bayesian approach with MCMC sampling for planetary

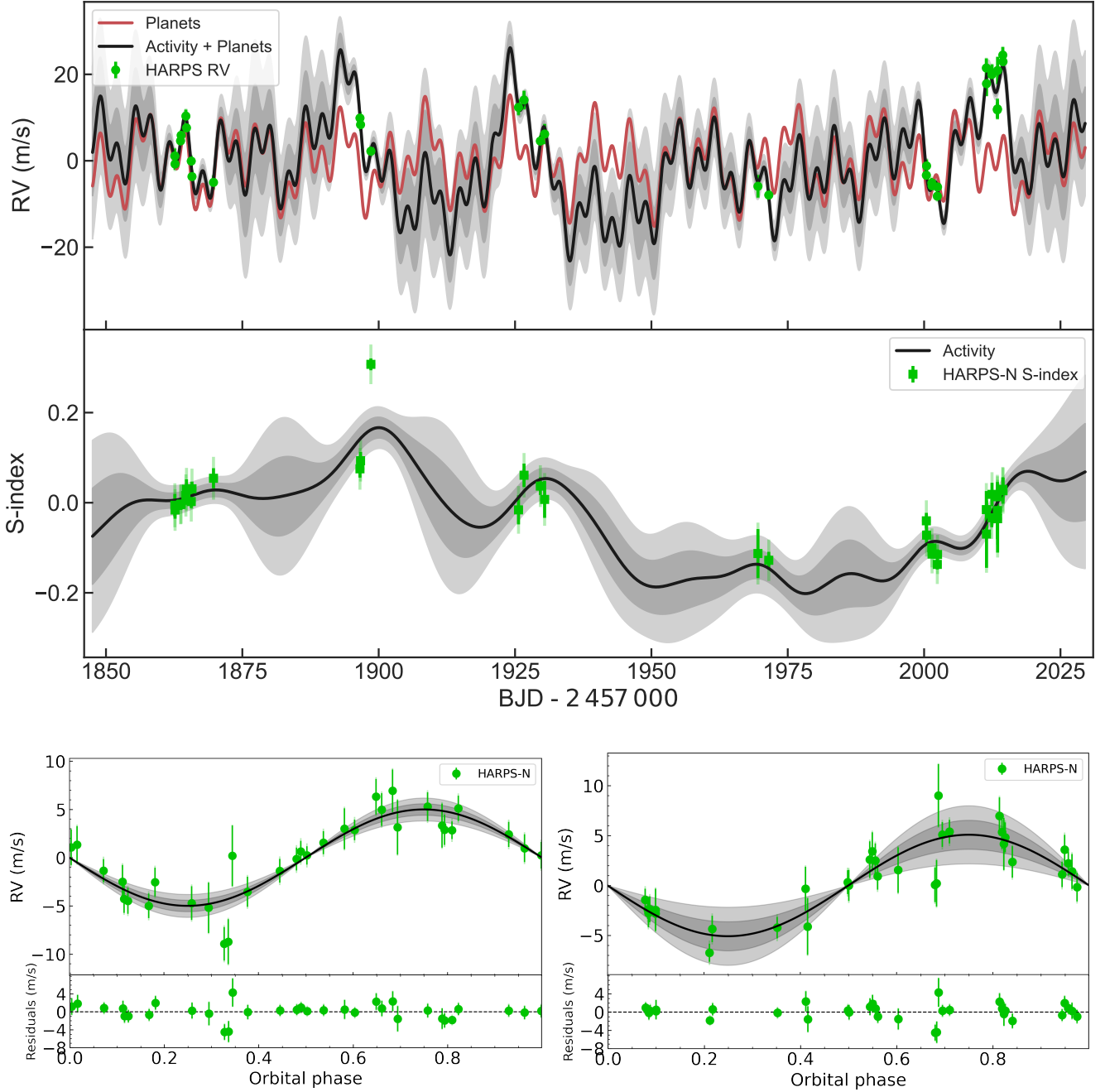


Figure 6. RV (top panel) and S-index (middle panel) time-series. The green markers in each panel represent the HARPS-N RV and S-index measurements with inferred offsets extracted. The solid dark line shows the inferred Multi-GP model, with dark and light shaded areas showing the one and two sigma credible intervals of the corresponding GP model. These regions represent ranges in which other GP curves could also explain the data, with different probability. For the RV panel we also included the RV model for the two planets (solid red line). Bottom panel: HARPS-N RV data folded on the orbital period of each candidate following the subtraction of the systemic velocities, GP signal, and the other planet. The plots also show the inferred RV model for each planet (solid black line) with 1- and 2-sigma credible intervals (shaded areas). In all the plots the nominal error bars are in green, and the error bars taking into account the jitter ($\sigma_{\text{HARPS-N}}$) are semi-transparent green. The latter are $< 1 \text{ m s}^{-1}$ for the RV data and are hardly visible.

systems parameter estimation, to perform our joint transit and RV analysis, as well as the monotransit and multi-band fits.

Adopting the flattened TESS light curves derived from *citlalicue* (Sect. 2.1), together with the LCO single transit data available for 1260.01 (Sect. 2.1), we model the transits using the Mandel & Agol (2002) approach as implemented in *pyaneti*. We

sample for the limb darkening parameters utilising the parametrisation q_1 and q_2 described by Kipping (2013). Instead of sampling for the scaled semi-major axis, a/R_\star , for each candidate, we sampled for the stellar density ρ_\star , as parametrized in *pyaneti*.

Section 3.3 describes that our RV measurements contain stellar-induced RV variations. For this reason we use the multi-

Table 2. Spectroscopic parameters derived with SME and SpecMatch-Emp compared to the stellar effective temperature from Gaia.

Method	T_{eff} (K)	[Fe/H]	log g (cgs)	$V \sin i_{\star}$ (km s $^{-1}$)
SME ^a	4227 ± 85	-0.10 ± 0.07	4.57 ± 0.05	1.5 ± 0.7
SpecMatch-Emp	4207 ± 70	-0.06 ± 0.12
Gaia	4351 ⁺²⁰⁴ ₋₁₁₀

^a Adopted stellar parameters.**Table 3.** Stellar mass and radius and the corresponding stellar densities derived with different methods and typical mass and radius for an K6 V star.

Method	M_{\star} (M_{\odot})	R_{\star} (R_{\odot})	ρ_{\star} (g cm $^{-3}$)
isochrones ^{a,b}	0.66 ± 0.01	0.65 ± 0.01	3.43 ± 0.08
Param 1.5 ^b	0.63 ± 0.02	0.63 ± 0.02	3.53 ± 0.32
SED fitting ^b	0.61 ± 0.08 ^c	0.67 ± 0.03	...
SpecMatch-Emp	...	0.67 ± 0.07	...
Torres ^{b,d}	0.61 ± 0.04	0.65 ± 0.05	3.07 ± 0.68
Boyajian ^e	0.65 ± 0.04
Light curve model ^f	3.46 ^{+0.62} _{-0.93}
Spectral type K6 V ^g	0.66	0.65	3.39

^a Adopted stellar mass and radius in the modelling in Sect. 4.^b Using T_{eff} , log g , and [Fe/H] from SME.^c Combining the SED radius with log g .^d Torres (2010) calibration equations.^e Boyajian et al. (2012) calibration equation from eclipsing binaries using R_{\star} from isochrones.^f Stellar density obtained from the light curve model (Sect. 4).^g Typical mass and radius for a K6 V star.

dimensional Gaussian-process approach described in Rajpaul et al. (2015) to model our RVs. This approach has been used successfully to separate planet signals from stellar activity by e.g. Barragán et al. (2019b) and Mayo et al. (2019). Briefly, it models RVs together with the activity indicators assuming the same underlying GP, $G(t)$, can describe them. This approach constrains the GP flexibility that could remove planet-induced signals. $G(t)$ can be interpreted as representing the fraction of the visible stellar disc that is covered by active regions at a given time.

For our final GP analysis we model our RVs alongside the S-index as

$$\begin{aligned} \Delta RV &= V_c G(t) + V_r \dot{G}(t), \\ \Delta S_{\text{HK}} &= S_c G(t), \end{aligned} \quad (1)$$

respectively. The variables V_c , V_r , and S_c , are free parameters which relate the individual time series to the Gaussian Process $G(t)$. The RVs depend on the fraction of the stellar disc covered by active regions as well as how these regions move on the surface. For this reason RVs are modelled as a function of $G(t)$ and its time derivative. We use the S-index given that it is an activity indicator that depends on the fraction of the stellar disc covered by active

regions, i.e., it can be described by $G(t)$ only. We use the quasi-periodic covariance function

$$\gamma(t_i, t_j) = \exp \left[-\frac{\sin^2[\pi(t_i - t_j)/P_{\text{GP}}]}{2\lambda_p^2} - \frac{(t_i - t_j)^2}{2\lambda_e^2} \right], \quad (2)$$

where P_{GP} is the period of the activity signal, λ_p the inverse of the harmonic complexity, and λ_e is the long term evolution timescale.

Before committing to a final model setup, we tested different orbital scenarios including two circular orbits, two eccentric orbits, as well as a combination of the two – inner body with eccentric, outer body with circular orbit, and vice versa. We found that all fits including eccentric orbits provide a solution for the eccentricities consistent with zero. We also calculated the commonly used Bayesian Information Criterion (BIC) and found that the case of two circular orbits is strongly favoured with a $\Delta\text{BIC} = 15$ better than the second best model. This is also consistent with short circularization timescales for short-period planets as well as the Van Eylen et al. (2019) finding that multi-planet systems tend to feature low eccentricities. Since both candidates are in close-in orbits, the circular case for both yields a value for the stellar density most consistent with the spectroscopically derived one, and given that the current data does not favour the solution with eccentric orbits, we use the circular orbits case scenario as our final model.

Using the above setup and the RVs from `serval`, we ran our final model with 500 chains to sample the parameter space. For the burn-in phase we used the last 5000 of the converged chains with a thin factor of 10, leading to a final number of 250,000 independent points for each sampled parameter.

As an additional test we ran a joint model without accounting for the stellar signal in any way. We find that the two planets are still detected, but the HARPS-N jitter is significantly higher (8.8 m s $^{-1}$) than the nominal night-to-night variation (≈ 0.8 m s $^{-1}$). This points to the presence of additional signals not accounted for by this model. Nevertheless, the results of this test agree within 1σ , thus lending confidence in our choice of final model.

To ensure that our detection is not due to an artefact of the RV data reduction, as an extra check we performed our final model setup using the DRS-derived RVs. The results once again agree to within 1σ of our adopted parameters.

Lastly, to check that our results do not depend on the sampling algorithm, we used the code `juliet` (Espinoza et al. 2019) to model jointly the photometric and Doppler data. The algorithm is built on many publicly available tools for the modeling of transits (`batman`, Kreidberg 2015), RVs (`radvel`, Fulton et al. 2018), and GP (`george`, Ambikasaran et al. 2016; `celerite`, Foreman-Mackey et al. 2017), and computes efficiently the Bayesian log-evidence using the importance nested sampling included in the `dynesty` package (Speagle 2020). We use the same set of priors presented in Table 4, but for the GP we use an exponential-sine-squared kernel of the form $k_{i,j} = \sigma_{\text{GP,RV}}^2 \exp \left(-\alpha_{\text{GP,RV}} (t_i - t_j)^2 - \Gamma_{\text{GP,RV}} \sin^2 \left[\frac{\pi |t_i - t_j|}{P_{\text{rot;GP,RV}}} \right] \right)$ with a uniform prior in $P_{\text{rot;GP,RV}}$ ranging from 22 to 43 d. The `juliet` package does not have the possibility to perform fits with multi-dimensional GP so in this case we apply it only on the RV data. Nevertheless, the fitted parameters from the joint fit with `juliet` are in perfect agreement with the results from `pyaneti`, confirming the robustness of the different analyses and the derived orbital parameters.

A summary of our results, including the fitted parameters and

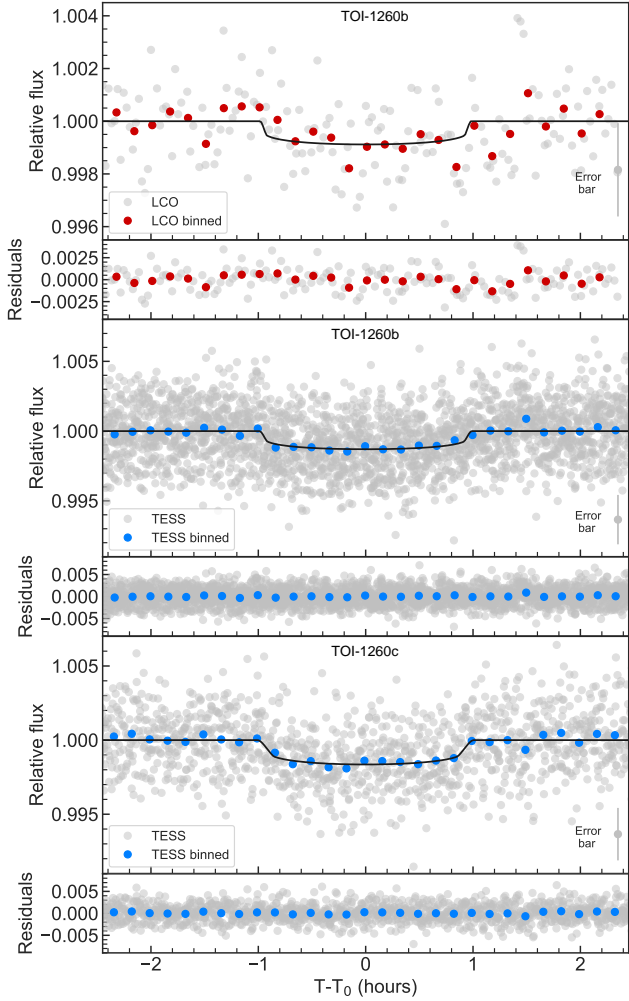


Figure 7. TOI-1260 b and TOI-1260 c transits. The panels show a flattened LCOGT and TESS light curves with residuals folded to the orbital periods of the planets. Black lines show the best-fitting transit models. The LCO and TESS radius estimates for planet b agree to nearly 1σ . Data are shown in the nominal 2-min cadence mode and binned to 10 min. Typical error bar for nominal data is shown at the bottom right for each panel.

priors are presented in Table 4. Figure 6 shows the RV and S-index timeseries together with the inferred models. It should be noted that in Fig. 6 the uncertainties of the inferred models (shadow regions) are relatively large, which is caused by the sub-optimal sampling of the data and the flexibility of the GP model. This figure illustrates the usefulness of the multi-dimensional GP used in this work as it is clear how the RV GP model is constrained by the changes in the S-index (similar to Fig. 2 of Barragán et al. 2019b).

Figure 6 also shows phase-folded RV data of planets b (1260.01) and c (1260.02) together with the corresponding inferred RV model, while Fig. 7 shows the single transit event of planet b detected by LCO as well as the phase-folded transits of both planets as obtained from TESS photometry.

4.1 Tentative outer planet

As discussed in Sect. 2.1, we report an additional transit-like event in Sector 21. A counterpart of this feature is not visible in Sector 14, although it is possible that the transit occurred during the ~ 1 -day

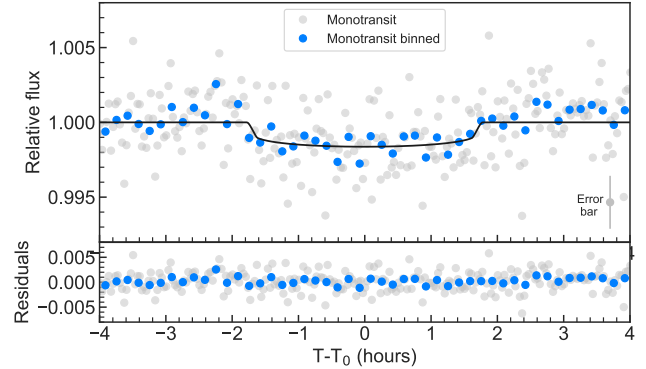


Figure 8. The single transit of the tentative outer planet d seen in Sector 21. The `pyaneti` transit model yields a T_0 of $1879.3211^{+0.0067}_{-0.0055}$ days and a depth of 1418^{+317}_{-248} ppm, which corresponds to a radius of $2.67^{+0.29}_{-0.25} R_{\oplus}$. Data are shown in the nominal 2-min cadence mode and binned to 10 min, with typical error bar for nominal data in the bottom right.

data gap between orbits (Fig. 2). This transit-like feature does not coincide with a spacecraft momentum dump.

To model the monotransit, we again turn to `pyaneti`. We follow a similar approach as in Osborn et al. (2016). Assuming a circular orbit and based on the transit shape, our single-transit model (Fig. 8) gives a range of physically possible periods of [13.4, 56.3], a transit depth of 1418^{+317}_{-248} ppm, which in turn yields a radius of $2.67^{+0.29}_{-0.25} R_{\oplus}$. We further narrowed down the period range based on the length of TESS observations and the apparent lack of occurrence of another such transit event during the observing windows. Our final possible periods are listed in Table B1. The binned and unbinned transit data and inferred model of the aforementioned monotransit visible in Sector 21 are displayed in Fig. 8.

In an attempt to try and explore further the physical properties of this tentative outer planet, we performed an MCMC analysis identical to our adopted one, but we added an extra planetary signal with ephemeris corresponding to the transit of the tentative planet d. We used a prior on T_0 of [8879.2, 8879.4], and a wide prior on the period of [20.0, 70.0] and created marginalized posterior distributions using `pyaneti`. We were unable to further constrain the period but we found the maximum allowed semi-amplitude to be 18.4 m s^{-1} (99% confidence interval).

We cannot constrain this further as there is also no sign of another planet in our RV dataset. However, with a maximum semi-amplitude of 18.4 m s^{-1} , this translates to a mass of $76.3 M_{\oplus}$. Therefore, if the signal at 1879.32 days is caused by a transiting object, this object belongs to the planetary mass domain.

We further note that the minimum period shown in Table B1 is 20.3 days. This constraint comes from the minimum period that the tentative outer planet has to have in order to not be observed transiting again in the light curve. We however, note that there is a transit of TOI-1260 c between the range 8895.80-8896.05 BJD - 2450000 that looks significantly deeper. This can be caused by some unknown systematics in the light curve or another obscuring object. To investigate this, we performed a simple model adding an extra single transit to a model of planet c between the range 8895.80-8896.05 BJD - 2450000. We thus found that we obtain a better model to the data if we add a signal with a time of mid-transit of 8895.938 ± 0.005 , depth of 1705 ± 350 ppm, and transit duration of 2.9 ± 0.3 hours. Figure 9 shows a plot with the two-transit model. These tentative transit parameters are consistent within 2-sigma

Table 4. Summary of the system parameters from the stellar modelling in Sect. 3 and the joint RV and transit modelling with `pyaneti` in Sect. 4.

Parameter	Prior ^(a)	Value ^(b)
Model Parameters for TOI-1260		
<i>TOI-1260 b</i>		
Orbital period P_{orb} (days)	$\mathcal{U}[3.1270, 3.1280]$	$3.12748^{+0.000047}_{-0.000038}$
Transit epoch T_0 (BJD - 2,450,000)	$\mathcal{U}[8684.0050, 8684.0250]$	$8684.0128^{+0.0016}_{-0.0024}$
e	$\mathcal{F}[0]$	0
ω_{\star}	$\mathcal{F}[\pi/2]$	$\pi/2$
Scaled planetary radius R_p/R_{\star}	$\mathcal{U}[0.01, 0.10]$	$0.0329^{+0.0014}_{-0.0012}$
Impact parameter, b	$\mathcal{U}[0, 1]$	$0.26^{+0.25}_{-0.17}$
Radial velocity semi-amplitude variation K (m s^{-1})	$\mathcal{U}[0, 25]$	$4.91^{+0.77}_{-0.83}$
<i>TOI-1260 c</i>		
Orbital period P_{orb} (days)	$\mathcal{U}[7.4925, 7.4940]$	$7.49325^{+0.00015}_{-0.00013}$
Transit epoch T_0 (BJD - 2,450,000)	$\mathcal{U}[8686.1050, 8686.1300]$	$8686.1179^{+0.0033}_{-0.0035}$
e	$\mathcal{F}[0]$	0
ω_{\star}	$\mathcal{F}[\pi/2]$	$\pi/2$
Scaled planetary radius R_p/R_{\star}	$\mathcal{U}[0.01, 0.10]$	0.0398 ± 0.0020
Impact parameter, b	$\mathcal{U}[0, 1]$	$0.714^{+0.067}_{-0.066}$
Radial velocity semi-amplitude variation K (m s^{-1})	$\mathcal{U}[0, 25]$	5.1 ± 1.4
GP Period P_{GP} (days)	$\mathcal{U}[22, 43]$	$32.5^{+3.7}_{-2.2}$
λ_p	$\mathcal{U}[0.1, 5]$	$1.4^{+1.0}_{-0.5}$
λ_c (days)	$\mathcal{U}[1, 200]$	45^{+17}_{-16}
V_c (km s^{-1})	$\mathcal{U}[0, 0.1]$	$0.005^{+0.012}_{-0.004}$
V_r (km s^{-1})	$\mathcal{U}[0, 1]$	$0.22^{+0.32}_{-0.12}$
S_c	$\mathcal{U}[0, 1]$	$0.26^{+0.28}_{-0.12}$
Offset HARPS-N (km s^{-1})	$\mathcal{U}[-0.05, 0.05]$	$0.0046^{+0.0050}_{-0.0057}$
Offset S-index	$\mathcal{U}[0.5, 1.9]$	1.11 ± 0.17
Jitter term $\sigma_{\text{HARPS-N}}$ (m s^{-1})	$\mathcal{J}[10^{-3}, 10^{-1}]$	$0.88^{+0.83}_{-0.61}$
Jitter term $\sigma_{\text{S-index}}$	$\mathcal{J}[10^{-3}, 10^{-1}]$	$0.0431^{+0.0088}_{-0.0070}$
Limb darkening q_1 , <i>TESS</i>	$\mathcal{U}[0, 1]$	$0.44^{+0.33}_{-0.24}$
Limb darkening q_2 , <i>TESS</i>	$\mathcal{U}[0, 1]$	$0.36^{+0.31}_{-0.24}$
Limb darkening q_1 , LCO	$\mathcal{U}[0, 1]$	$0.35^{+0.39}_{-0.24}$
Limb darkening q_2 , LCO	$\mathcal{U}[0, 1]$	$0.42^{+0.32}_{-0.28}$
Jitter term σ_{TESS} ($\times 10^{-6}$)	$\mathcal{U}[0, 1 \times 10^3]$	752 ± 27
Jitter term σ_{LCO} ($\times 10^{-6}$)	$\mathcal{U}[0, 1 \times 10^3]$	141^{+15}_{-99}
Stellar density ρ_{\star} (g cm^{-3})	$\mathcal{U}[0.1, 10]$	$3.47^{+0.89}_{-1.22}$
Derived parameters		
	TOI-1260 b	TOI-1260 c
Planet mass (M_{\oplus})	$8.6^{+1.4}_{-1.5}$	$11.8^{+3.4}_{-3.2}$
Planet radius (R_{\oplus})	$2.34^{+0.11}_{-0.09}$	2.82 ± 0.15
Planet density (g cm^{-3})	$3.69^{+0.81}_{-0.76}$	$2.87^{+0.98}_{-0.86}$
Scaled semi-major axis a/R_{\star}	$12.14^{+0.7}_{-1.2}$	$21.7^{+1.2}_{-2.2}$
Semi-major axis a (AU)	$0.0366^{+0.0022}_{-0.0036}$	$0.0656^{+0.0039}_{-0.0065}$
Orbital inclination i (deg)	$88.8^{+0.8}_{-1.4}$	$88.12^{+0.24}_{-0.39}$
Transit duration t_{tot} (hours)	$1.963^{+0.066}_{-0.091}$	$1.96^{+0.12}_{-0.10}$
Equilibrium temperature ^(c) T_{eq} (K)	860^{+47}_{-31}	643^{+35}_{-23}
Insolation F_p (F_{\oplus})	91^{+22}_{-12}	$28.4^{+6.8}_{-3.9}$
Planet surface gravity ^(d) (cm s^{-2})	1520^{+370}_{-420}	1410^{+350}_{-500}
Planet surface gravity (cm s^{-2})	1540 ± 290	1450^{+450}_{-410}
Adopted stellar parameters		
Stellar mass (M_{\odot})	...	0.66 ± 0.01
Stellar radius (R_{\odot})	...	0.65 ± 0.01
Stellar density (g cm^{-3})	...	3.43 ± 0.08
Effective temperature (K)	...	4227 ± 85
Bolometric luminosity (L_{\odot})	...	0.139 ± 0.005

Note – ^(a) $\mathcal{U}[a, b]$ refers to uniform priors between a and b , $\mathcal{J}[a, b]$ to modified Jeffrey's priors calculated using eq. 16 in Gregory (2005), and $\mathcal{F}[a]$ to a fixed value a . ^(b) Inferred parameters and errors are defined as the median and 68.3% credible interval of the posterior distribution. ^(c) Assuming an albedo of 0. ^(d) Calculated from the scaled-parameters as in Southworth et al. (2007).

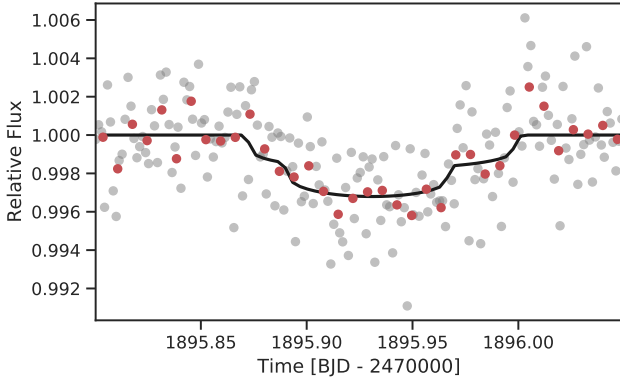


Figure 9. Two-transit model of the potentially overlapping transits of planet c and the tentative planet d, around 1895.95 BJD - 2457000. Gray circles show the flattened TESS data, with ten-minute bins as red circles, and solid line showing the inferred transit model including both planet signals.

with our single transit event at 8879.3210683 BJD - 2450000. If this detected signal is real and it corresponds to a second transit of the tentative planet d, then its period would be ~ 16.61 days (see Sect. 2.1). Unfortunately, with this period, the only other visible transit in the available TESS light curves would have fallen in the data gap of Sector 14.

We then repeat a similar approach as the one described in Sect. 4, with an extra Keplerian signal with a tight prior on the ephemeris of the tentative 16.61-day planet but we have no clear detection of a RV signal at that period. If this planet is real, based on this three-planet model, its period, radius and transit duration would be $16.613^{+0.008}_{-0.006}$ days and $2.75^{+0.172}_{-0.177} R_{\oplus}$ and $3.11^{+0.20}_{-0.15}$ hours, respectively. The 99% credible interval for the maximum semi-amplitude would be around 13 m s^{-1} , which in turn translates to a maximum mass of around $39 M_{\oplus}$. Adding this signal has an insignificant effect on the parameters of planet b, while planet c shows a slight decrease in radius to $2.68 \pm 0.14 R_{\oplus}$ and an increase in mass to $13.39^{+3.49}_{-3.26} M_{\oplus}$. Both of these agree well with our officially reported estimates in Table 4.

Based on these results, we take a conservative approach and we conclude that, based on the available information, we cannot claim a planet with a period of 16.61 days. However, if there is such a planet, it could be confirmed by photometric ground or space-based follow-up. Fortunately, TESS will observe TOI-1260 again in three more sectors – 41, 47 and 48. We note, however, that a RV follow-up would be more challenging because this tentative period is close to half the rotation period of the star.

5 DISCUSSION

5.1 Dynamical stability

The dynamical viability of multi-planet systems is an important component of assessing valid architectures. Testing dynamical integrity and subsequent orbital evolution has played a key role in understanding Kepler systems (Lissauer et al. 2011; Li et al. 2014; Kane 2015, 2019). To test the stability of the orbital solution for our two confirmed planets in the TOI-1260 system, we executed N-body integrations using the Mercury Integrator Package (Chambers 1999). We adopted the stellar, planetary masses and semi-major axes from Table 4. We further assumed initial circular orbits for both of the planets. The simulation was performed for 10^7 simu-

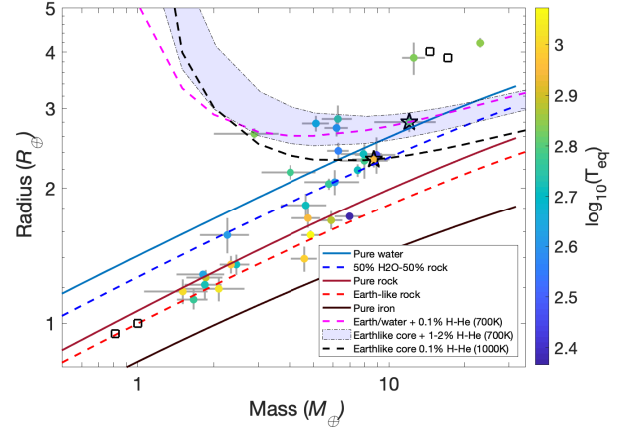


Figure 10. Mass-radius diagram of planets with measured masses better than 30% and radii better than 10% orbiting mid-M to mid-K dwarfs (3000–4400 K). In total there are 26 planets in 19 multi-planet systems. Models of core compositions without atmosphere (Zeng et al. 2016) and with atmosphere (Zeng et al. 2019) at different equilibrium temperatures are also plotted. TOI-1260 b and TOI-1260 c are marked with star symbols, and squares are the Solar system planets.

lation years with a time step of 0.1 days to properly sample the relatively short orbital period of the inner planet. The results of the simulation showed no signs of instability, and the eccentricities of both planets remained below 10^{-3} for the duration of the simulation. This demonstrates that the gravitational well of the star is the overwhelmingly dominant influence on the planetary dynamics within their compact system configuration. Given the proximity of the planets to each other, we also investigated the possibility of determining upper mass limits that retain dynamical stability. We gradually increased the masses of both planets independently until the dynamical integrity of the system was compromised during a series of 10^6 year simulations. These simulations showed that the maximum masses for both planets are loosely constrained based on their dynamical interactions, with maximum masses approaching several Jupiter masses before significant instability occurs.

Tipped off by the suspected presence of an outer planet, we decided to check if the system exhibits Transit Timing Variations (TTVs). We performed a TTV analysis using PyTTV (Python Tool for Transit Variations, Korth 2020), which showed that a linear ephemeris can be fit between the sectors. The ephemerides from our modelling results (Table 4) and the lack of TTVs allows for future observations of the system using other facilities to be scheduled efficiently.

5.2 Characterization of the TOI-1260 planets

Two important factors that influence the radius distribution of planets are the semi-major axis and the mass of the host star (Fulton & Petigura 2018; Wu 2019; Cloutier & Menou 2020; Van Eylen et al. 2021). Both of these determine a planet’s X-ray/UV irradiation evolution. Since the magnitude and evolution of the X-ray luminosity differs between sun-like and low mass stars (McDonald et al. 2019b; Luque et al. 2021), we show in Fig. 10 a mass-radius diagram with planets orbiting mid-M to mid-K stars (here defined as having T_{eff} between 3000 and 4400 K) measured to a precision better than 30% in mass and 10% in radius. We also plot theoretical models of planet core compositions without an atmosphere (Zeng et al. 2016)

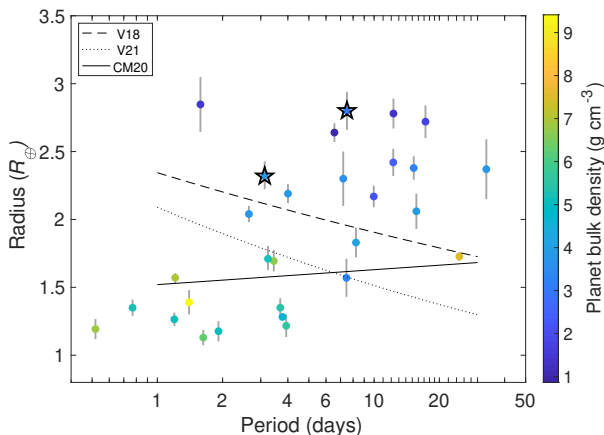


Figure 11. Radius-period diagram for the same planet population as in Fig. 10. The dashed line is the fit to the FGK radius valley from V18 (Van Eylen et al. 2018), the solid line refers to stars $\leq 4700\text{K}$ as per CM20, Cloutier & Menou (2020), while the dotted line – to M dwarfs with $T_{\text{eff}} < 4000\text{ K}$ (Van Eylen et al. 2021). TOI-1260 b and TOI-1260 c are again marked with star symbols. Planet c is found comfortably above all three radius valleys fits, while planet b lies on the edge of the V18 fit.

and with an atmosphere (Zeng et al. 2019) at different equilibrium temperatures matching TOI-1260 b and TOI-1260 c. From Fig. 10 we see that the two mini-Neptunes in the TOI-1260 system may be water worlds or rocky worlds with H-He atmospheres inflating their radii. The position of TOI-1260 b in the diagram is consistent with a planet composition of 50% Earth-like rocky core (32.5% Fe + 67.5% MgSiO₃) and 50% H₂O ice without an atmosphere, or an Earth-like rocky core with a H-He atmosphere of $\sim 0.1\%$. The position of TOI-1260 c, with $11.8^{+3.4}_{-3.2} M_{\oplus}$, $2.82 \pm 0.15 R_{\oplus}$, and a bulk density of $2.87^{+0.98}_{-0.86} \text{ g cm}^{-3}$, lies above the pure water line in the diagram. The orbital period and equilibrium temperature are 7.493 days and 643 K, respectively. We find that two models fit the position in the diagram: an Earth-like rocky core with a H-He atmosphere of $\sim 2\%$, or alternatively, a core composed of a mix of 49.95% rock and 49.95% ices and a H-He atmosphere of $\sim 0.1\%$.

Since the location of the photoevaporation valley is a function of stellar mass and is thus different for low-mass vs solar-type stars, we plot in Fig. 11 the same T_{eff} ranges as in Fig. 10. As evident from Fig. 11, both TOI-1260 planets lie above the photoevaporation gap (Van Eylen et al. 2018; Cloutier & Menou 2020; Van Eylen et al. 2021), or close to its edge as is the case of planet b. Depending on the photoevaporation valley fit used, however, planet b could also lie exactly in the transition zone (Wu 2019). It should be noted that the Van Eylen et al. (2018) curve is based on hotter (4700 – 6500 K) and thus higher mass stars, the Cloutier & Menou (2020) and Wu (2019) curves relate to low mass stars (mid-K and cooler), while the Van Eylen et al. (2021) refers to M dwarfs with $T_{\text{eff}} < 4000\text{ K}$. We have color-coded the planet bulk densities in Fig. 11, and it is evident that the planets above the radius gap have lower densities than the planets below. The TOI-1260 planets are consistent with this trend as they have relatively low densities and their compositions are degenerated. They both are consistent with both (a) an Earth-like composition of iron and silicates, and (b) an Earth-like core with a substantial fraction of water ice. We delve into possible reasons for this ambiguity in the following sections.

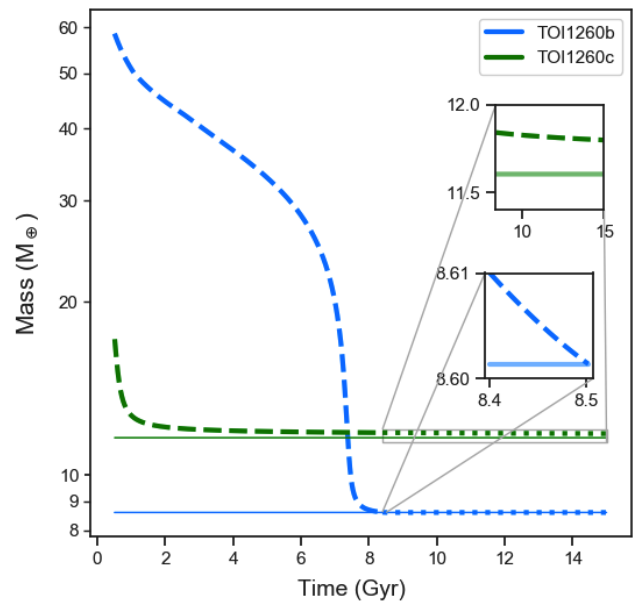


Figure 12. Mass temporal evolution of the TOI-1260 planets assuming a nominal stellar age of 8.4 Gyr, a rock/metal core and a H-He envelope of 0.1% and 2% for planets b and c, respectively. Dotted lines refer to the evolution from the current age of the system until 15 Gyr. Dashed lines refer to the inferred evolution from early to current times. The insets show a zoomed-in view of the future evolution, where the semi-transparent solid lines denote the core mass of each planet. It can be clearly seen that planet b would lose a 0.1% H-He atmosphere in about 100 Myr, while the atmosphere of planet c is stable against photoevaporation.

5.2.1 Mass and radius evolution induced by photoevaporation

In order to shed light on which planet composition model TOI-1260 b and TOI-1260 c belong to, we investigate the mass and radius temporal evolution induced by atmospheric photoevaporation. To this end, we study the temporal evolution of the high-energy stellar radiation and the planetary radius. We consider a primary H-He atmosphere, a rock/iron core as per Lopez & Fortney (2014), assume circular orbits, ignore any migration effects and follow the hydrodynamic-based approximation developed by Kubyskhina et al. (2018). A major driver behind atmospheric hydrodynamic mass loss is the X-ray luminosity since X-ray heating from the star can drive a system to an intense hydrodynamic escape phase (Erkaev et al. 2007; Penz et al. 2008a; Locci et al. 2019). We estimated the current X-ray luminosity using the $\log(R'_{\text{HK}})$, our SED bolometric luminosity and the relationships in Houdebine et al. (2017), obtaining $L_X = 4.51 \times 10^{27} \text{ erg s}^{-1}$. Since the evolution of extreme ultraviolet radiation follows the evolution of X-ray radiation, we accounted for the X-ray luminosity evolution by using the prescriptions given in Penz et al. (2008b) and the relation given in Sanz-Forcada et al. (2011). Following Poppenhaeger et al. (2021), we account for the evolution of the planetary radius by means of the analytic fit given in Lopez & Fortney (2014). The analytic fit provides the radius envelope, R_{env} , as a function, among other parameters, of the atmospheric mass fraction, f_{atm} , and the age of the system, which in turn allows us to also account for gravitational shrinking.

Calculating the planetary mass (M_p), f_{atm} and R_{env} is an iterative process. As a first step, we look at the future evolution of the system from its present age ($\sim 8.4\text{ Gyr}$) to 15 Gyr and assume f_{atm} values of 0.1% and 2% for planets b and c, respectively. These correspond to the composition scenarios of an Earth-like rocky core

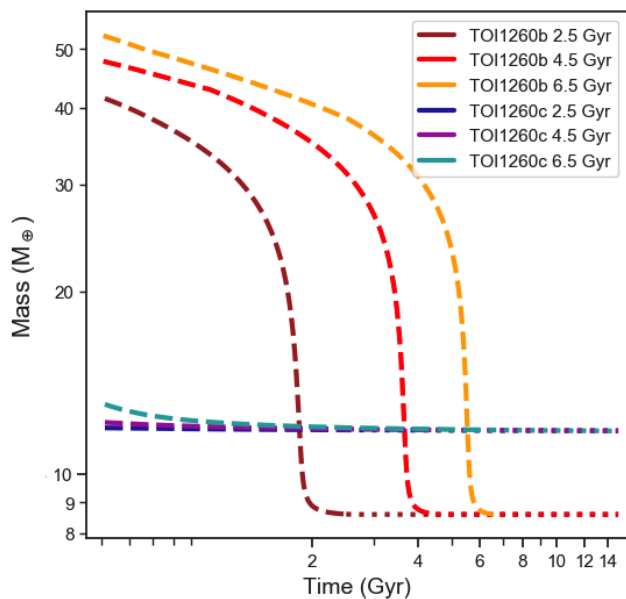


Figure 13. Mass temporal evolution of the TOI-1260 planets as per Fig. 12 but considering different stellar ages.

with a H-He envelope for both planets. We then calculate the corresponding R_{env} and estimate the core radius simply as the difference between the measured by photometry planetary radius, R_p (Table 4) and the calculated R_{env} . Next, we updated f_{atm} and M_p at each time step according to the mass loss and used them to calculate a new R_{env} , adding the latter to the core radius, to finally obtain the new R_p . We find that planet b loses its atmosphere in about 100 Myr, while planet c retains part of it until the end of the run.

5.2.2 Effect of the stellar age

To better understand the situation, we take this analysis one step further by tracing the system’s evolution back in time. Assuming the aforementioned scenarios, since the core does not change in size or mass, we create a synthetic population of planets and assign to them the current core radii and masses of our planets. This leaves f_{atm} to dictate the total mass, while the total radius is again based on the analytic fit by Lopez & Fortney (2014). We then looked at the planets that ended up with a similar current mass, radius and f_{atm} and looked at their predicted past histories.

Figure 12 shows the result of both the future (dotted lines) and past (dashed) simulation runs. We trace the planets back to 0.5 Gyr from the assumed birth of the system and see that in the case of planet b (purple curve), we reach a mass of nearly $60 M_{\oplus}$ ⁶. In the case of planet c (Fig. 12, green curve), we find a much more controlled mass loss process, reaching a starting point of about $17 M_{\oplus}$. This, and the fact that the future evolution of the atmosphere is stable against evaporation in the long run, makes the Earth-like core with 2% atmosphere case plausible.

While it is possible to trace the planets further back in time, we stop at 0.5 Gyr since the results beyond that would be subjected

to the further uncertainty associated with the stellar rotation rate during the saturation phase early in the star’s life.

Due to the uncertainty in the stellar age, we decided to test the same cases as before but with lower age values. We chose ages of 2.5, 4.5 and 6.5 Gyr and reran the models for both planets (Fig. 13). In short, we find that planet b still loses its atmosphere in about the same time frame (~ 100 Myr); planet c retains a long-term stable atmosphere as before and its temporal evolution is almost completely independent of the age of the star. This result is not so surprising when we consider the fact that the X-ray luminosity is most intense in the early evolutionary stages, during which most of the atmospheric mass loss occurs. These results are generally consistent with the above findings for the nominal age, showing that the mass and radius evolution of the planets is robust for a wide range of stellar ages.

We, however, note, that 100 Myr is a short time compared to the overall life of the star, especially if the star is older. This makes it relatively unlikely that we would currently be witnessing the process of planet b losing a primary H-He atmosphere.

The fact that the nominal age is at the upper limit of the thin disc population age range (see Sect. 3.4), as well as the result that the mass evolution of both planets is well consistent with a significantly younger star, suggests the possibility that this star is, in fact, younger, which in turn emphasizes the fact that a high precision of the stellar age estimate can decrease the degeneracy in the determination of planet interiors.

5.2.3 Planetary composition and atmospheric characterization potential

Looking back to the two scenarios for TOI-1260 b, we consider the composition of a 50% Earth-like core and 50% water-ice case, likely mixed rather than layered as suggested by Vazan et al. (2020), to be more probable. However, the above models do not take into account planet migration or rather assume orbit migration took place quickly (a few Myr) early in the system’s history, so a complex migration history could have played a role in this relatively old system. We also note that the X-ray luminosity evolution is calculated using a scaling law just for the mean value (Penz et al. 2008b) and does not account for different levels of high energy radiation to which planets could be subjected during their early evolutionary stages. The effects of stellar wind and magnetically-driven cataclysmic events originating from the stellar surface, which could affect the rate of photoevaporation, are also ignored. Furthermore, our simulations only consider the case of H-He primary atmospheres. Thus, our results do not exclude the possibility of secondary envelopes, or primary envelopes of a different composition, which may in turn be smaller and more difficult to lose under atmospheric escape processes. The latter case could mean that TOI-1260 b and TOI-1260 c are representatives of a high-metallicity population of hot Neptunes as discussed in depth by Moses et al. (2013). Hu et al. (2015) proposed the existence of He atmosphere planets, and that many sub-Neptune-sized exoplanets in short orbits could possess such atmospheres. They proposed that such an atmosphere could explain for example the emission and transmission spectra of GJ436b. While much smaller and less massive than GJ436b, TOI-1260 b has a similar orbital period and equilibrium temperature, and could be a firm candidate to possess a He atmosphere. Those atmospheres contain trace amounts of hydrogen, carbon, and oxygen, with the predominance of CO over CH₄ as the main form of carbon (Hu et al. 2015), which could fit with the overall bulk composition of the planet determined here.

Another seemingly probable scenario, considering the planets’

⁶ The hydrodynamic-based approximation works in the $1 - 39 M_{\oplus}$ mass range, so beyond this limit we use the energy limited approximation by Erkaev et al. (2007) to model the mass loss.

proximity to the star and the implied intense insolation, coupled with an assumed high water content of both planets, could be that the observed radii are highly inflated as the atmospheres may be well-represented by supercritical hydrospheres (Mousis et al. 2020). Unfortunately, the transmission spectroscopy metrics (TSM, Kempton et al. 2018) for TOI-1260 b and TOI-1260 c are 44 and 42, respectively. This places both planets below the recommended TSM cutoff for planets with radii above $1.5 R_{\oplus}$ ($TSM > 90$). Still, ground-based high-resolution spectroscopy could probe for the presence of ongoing escape processes by observing the $H\alpha$ lines (Yan & Henning 2018) in the near-IR, as the $Ly\alpha$ line will be too absorbed by the interstellar medium at the system's distance (~ 74 pc).

6 CONCLUSIONS

In this paper we present the detection and characterization of the TOI-1260 system observed by TESS in Sectors 14 and 21. This K6 V star hosts two mini-Neptunes in short-period orbits confirmed by HARPS-N radial velocities, as well as a tentative outer planet, which is seen transiting in the TESS photometry in Sector 21.

We use GP regression to disentangle the stellar from the planet signals contained in our radial velocities. GPs offer a lot of flexibility, which may lead to the removal of genuine signals of planetary origin - a risk we mitigate by using the information provided by activity indicators, i.e. the relatively novel multi-dimensional GP approach.

We note, however, that in order to improve the mass characterisation of the planets we need a strategic RV follow-up. More specifically, taking several observations within a single stellar rotation period, instead of sporadic observations, is a better strategy to disentangle stellar activity using GPs, since the latter rely on the correlation between points.

We perform simulations to evaluate the possibility of hydrodynamic atmospheric mass loss, which demonstrated the difficulty in constraining the structure and composition of planets in $2 - 3 R_{\oplus}$ radius range. Our discussion thus emphasizes the fact that solely from the mass and radius we cannot distinguish between a planet being H_2O -dominated or a rocky planet with a significant envelope. Another constraint to our insight into similar systems is the large uncertainty on the systems' ages. This could be remedied from a large sample of planet systems with well-determined ages, such as is attempted to be achieved by the core sample of the PLATO mission (Rauer et al. 2014), with projected uncertainties in its age determinations to be within 10%. In this paper we further demonstrate the need to study close-in planets around low-mass stars to help constrain composition models and mass-loss mechanisms. We add that the precision to which planetary masses are measured today is often insufficient to accomplish this to a satisfactory level, complicating our overall understanding of exoplanet demographics.

ACKNOWLEDGEMENTS

This work is done under the framework of the KESPRINT collaboration (<http://kesprint.science>). KESPRINT is an international consortium devoted to the characterization and research of exoplanets discovered with space-based missions.

IYG, CMP, MF and JK gratefully acknowledge the support of the Swedish National Space Agency (DNR 174/18, 65/19, 2020-00104).

KWFM and ME acknowledge the support of the DFG priority

program SPP 1992 "Exploring the Diversity of Extrasolar Planets" (RA714/14-1, HA3279/12-1).

HD acknowledges support from the Spanish Research Agency of the Ministry of Science and Innovation (AEI-MICINN) under grant PID2019-107061GB-C66, DOI: 10.13039/501100011033.

This work was supported by the Thüringer Ministerium für Wirtschaft, Wissenschaft und Digitale Gesellschaft.

This research has made use of the Exoplanet Follow-up Observation Program website, which is operated by the California Institute of Technology, under contract with the National Aeronautics and Space Administration under the Exoplanet Exploration Program.

This work makes use of observations from the LCOGT network.

Some of the Observations in the paper made use of the High-Resolution Imaging instrument 'Alopeke'. 'Alopeke' was funded by the NASA Exoplanet Exploration Program and built at the NASA Ames Research Center by Steve B. Howell, Nic Scott, Elliott P. Horch, and Emmett Quigley. 'Alopeke' is mounted on the Gemini North telescope of the international Gemini Observatory, a program of NOIRLab, which is managed by the Association of Universities for Research in Astronomy (AURA) under a cooperative agreement with the National Science Foundation. on behalf of the Gemini partnership: the National Science Foundation (United States), National Research Council (Canada), Agencia Nacional de Investigación y Desarrollo (Chile), Ministerio de Ciencia, Tecnología e Innovación (Argentina), Ministério da Ciência, Tecnologia, Inovações e Comunicações (Brazil), and Korea Astronomy and Space Science Institute (Republic of Korea).

This paper includes data collected by the TESS mission. Funding for the TESS mission is provided by the NASA Explorer Program. We acknowledge the use of public TOI Release data from pipelines at the TESS Science Office and at the TESS Science Processing Operations Center. Resources supporting this work were provided by the NASA High-End Computing (HEC) Program through the NASA Advanced Supercomputing (NAS) Division at Ames Research Center for the production of the SPOC data products. This research has made use of the Exoplanet Follow-up Observation Program website, which is operated by the California Institute of Technology, under contract with the National Aeronautics and Space Administration under the Exoplanet Exploration Program.

This work has made use of data from the European Space Agency (ESA) mission *Gaia* (<https://www.cosmos.esa.int/gaia>), processed by the *Gaia* Data Processing and Analysis Consortium (DPAC, <https://www.cosmos.esa.int/web/gaia/dpac/consortium>). Funding for the DPAC has been provided by national institutions, in particular the institutions participating in the *Gaia* Multilateral Agreement.

This research has made use of the VizieR catalogue access tool, CDS, Strasbourg, France (DOI: 10.26093/cds/vizier). The original description of the VizieR service was published in A&AS 143, 23.

Based on observations made with the Italian Telescopio Nazionale Galileo (TNG) operated on the island of La Palma by the Fundación Galileo Galilei of the INAF (Istituto Nazionale di Astrofisica) at the Spanish Observatorio del Roque de los Muchachos of the Instituto de Astrofísica de Canarias under programmes CAT19A_162, ITP19_1 and A41TAC_49.

Facility: TESS, Gaia, TNG/HARPS-N, LCOGT.

Software: EXOTRANS, lightkurve, citlalicue, george, pytransit, IRAF, PARAM 1.5, SME, SpecMatch-emp, AstroImageJ, pyaneti, juliet, pyTTV.

Data availability: The data underlying this article are available in

the article and in its online supplementary material, as well as ExoFOP-TESS⁷.

REFERENCES

- Ambikasaran S., Foreman-Mackey D., Greengard L., Hogg D. W., O’Neil M., 2016, *IEEE Transactions on Pattern Analysis and Machine Intelligence*, 38, 252
- Baglin A., et al., 2006, in 36th COSPAR Scientific Assembly. p. 3749
- Baranne A., et al., 1996, *A&AS*, 119, 373
- Barragán O., Gandolfi D., Antoniciello G., 2019a, *MNRAS*, 482, 1017
- Barragán O., et al., 2019b, *MNRAS*, 490, 698
- Berger T. A., Huber D., Gaidos E., van Saders J. L., Weiss L. M., 2020, *AJ*, 160, 108
- Borucki W. J., et al., 2010, *Science*, 327, 977
- Boyajian T. S., et al., 2012, *ApJ*, 757, 112
- Bressan A., Marigo P., Girardi L., Salasnich B., Dal Cero C., Rubele S., Nanni A., 2012, *MNRAS*, 427, 127
- Brown T. M., et al., 2013, *Publications of the Astronomical Society of the Pacific*, 125, 1031
- Buchner J., et al., 2014, *A&A*, 564, A125
- Chambers J. E., 1999, *MNRAS*, 304, 793
- Choi J., Dotter A., Conroy C., Cantiello M., Paxton B., Johnson B. D., 2016, *ApJ*, 823, 102
- Ciardi D. R., Beichman C. A., Horch E. P., Howell S. B., 2015, *ApJ*, 805, 16
- Cloutier R., Menou K., 2020, *AJ*, 159, 211
- Collins K. A., Kielkopf J. F., Stassun K. G., Hessman F. V., 2017, *AJ*, 153, 77
- Cosentino R., et al., 2012, in Ground-based and Airborne Instrumentation for Astronomy IV. p. 84461V, doi:10.1117/12.925738
- Cosentino R., et al., 2014, in Ground-based and Airborne Instrumentation for Astronomy V. p. 91478C, doi:10.1117/12.2055813
- Curtis J. L., et al., 2020, arXiv e-prints, p. arXiv:2010.02272
- Dong S., Xie J.-W., Zhou J.-L., Zheng Z., Luo A., 2018, *Proceedings of the National Academy of Science*, 115, 266
- Erkaev N. V., Kulikov Y. N., Lammer H., Selsis F., Langmayr D., Jaritz G. F., Biernat H. K., 2007, *A&A*, 472, 329
- Espinoza N., Kossakowski D., Brahm R., 2019, *MNRAS*, 490, 2262
- Foreman-Mackey D., Hoyer S., Bernhard J., Angus R., 2014, george: George (v0.2.0), doi:10.5281/zenodo.11989, https://doi.org/10.5281/zenodo.11989
- Foreman-Mackey D., Agol E., Ambikasaran S., Angus R., 2017, celerite: Scalable 1D Gaussian Processes in C++, Python, and Julia (ascl:1709.008)
- Fridlund M., et al., 2017, *A&A*, 604, A16
- Fulton B. J., Petigura E. A., 2018, *AJ*, 156, 264
- Fulton B. J., et al., 2017, *AJ*, 154, 109
- Fulton B. J., Petigura E. A., Blunt S., Sinukoff E., 2018, *Publications of the Astronomical Society of the Pacific*, 130, 044504
- Gaia Collaboration et al., 2021, *A&A*, 649, A6
- Gregory P. C., 2005, *ApJ*, 631, 1198
- Grziwa S., Pätzold M., Carone L., 2012, *MNRAS*, 420, 1045
- Günther M. N., et al., 2019, *Nature Astronomy*, 3, 1099
- Gustafsson B., Edvardsson B., Eriksson K., Jørgensen U. G., Nordlund Å., Plez B., 2008, *A&A*, 486, 951
- Hirano T., et al., 2018, *AJ*, 155, 127
- Hodapp K. W., et al., 2003, *PASP*, 115, 1388
- Houdebine E. R., Mullan D. J., Bercu B., Paletou F., Gebran M., 2017, *ApJ*, 837, 96
- Howell S. B., Everett M. E., Sherry W., Horch E., Ciardi D. R., 2011, *AJ*, 142, 19
- Howell S. B., et al., 2014, *PASP*, 126, 398
- Hu R., Seager S., Yung Y. L., 2015, *ApJ*, 807, 8
- Jenkins J. M., 2002, *ApJ*, 575, 493
- Jenkins J. M., et al., 2010, in Radziwill N. M., Bridger A., eds, Society of Photo-Optical Instrumentation Engineers (SPIE) Conference Series Vol. 7740, Software and Cyberinfrastructure for Astronomy. p. 77400D, doi:10.1117/12.856764
- Jenkins J. M., et al., 2016, in Proc. SPIE. p. 99133E, doi:10.1117/12.2233418
- Jenkins J. M., Tenenbaum P., Seader S., Burke C. J., McCauliff S. D., Smith J. C., Twicken J. D., Chandrasekaran H., 2017, Kepler Data Processing Handbook: Transiting Planet Search, Kepler Science Document KSCI-19081-002
- Jensen E., 2013, Tapir: A web interface for transit/eclipse observability, Astrophysics Source Code Library (ascl:1306.007)
- Jurgenson C., Fischer D., McCracken T., Sawyer D., Szymkowiak A., Davis A., Muller G., Santoro F., 2016, in Evans C. J., Simard L., Takami H., eds, Society of Photo-Optical Instrumentation Engineers (SPIE) Conference Series Vol. 9908, Ground-based and Airborne Instrumentation for Astronomy VI. p. 99086T (arXiv:1606.04413), doi:10.1117/12.2233002
- Kane S. R., 2015, *ApJ*, 814, L9
- Kane S. R., 2019, *AJ*, 158, 72
- Kempton E. M. R., et al., 2018, *PASP*, 130, 114401
- Kipping D. M., 2013, *MNRAS*, 435, 2152
- Korth J., 2020, PhD thesis, Universität zu Köln, https://kups.uni-koeln.de/11289/
- Kostov V. B., et al., 2019, *AJ*, 158, 32
- Kovács G., Zucker S., Mazeh T., 2002, *A&A*, 391, 369
- Kreidberg L., 2015, *Publications of the Astronomical Society of the Pacific*, 127, 1161
- Kubyskhina D., et al., 2018, *A&A*, 619, A151
- Kurucz R. L., 2013, ATLAS12: Opacity sampling model atmosphere program, Astrophysics Source Code Library (ascl:1303.024)
- Li G., Naoz S., Valsecchi F., Johnson J. A., Rasio F. A., 2014, *ApJ*, 794, 131
- Lightkurve Collaboration et al., 2018, Lightkurve: Kepler and TESS time series analysis in Python, Astrophysics Source Code Library (ascl:1812.013)
- Lissauer J. J., et al., 2011, *ApJS*, 197, 8
- Locci D., Cecchi-Pestellini C., Micela G., 2019, *A&A*, 624, A101
- Lopez E. D., Fortney J. J., 2013, *ApJ*, 776, 2
- Lopez E. D., Fortney J. J., 2014, *ApJ*, 792, 1
- Luque R., et al., 2021, *A&A*, 645, A41
- Mamajek E. E., Hillenbrand L. A., 2008, *ApJ*, 687, 1264
- Mandel K., Agol E., 2002, *ApJ*, 580, L171
- Mayo A. W., et al., 2019, *AJ*, 158, 165
- Mayor M., et al., 2003, *The Messenger*, 114, 20
- McDonald G. D., Kreidberg L., Lopez E., 2019a, *ApJ*, 876, 22
- McDonald G. D., Kreidberg L., Lopez E., 2019b, *ApJ*, 876, 22
- Morris R. L., Twicken J. D., Smith J. C., Clarke B. D., Jenkins J. M., Bryson S. T., Girouard F., Klaus T. C., 2017, Kepler Data Processing Handbook: Photometric Analysis, Kepler Science Document KSCI-19081-002
- Morton T. D., 2015, isochrones: Stellar model grid package (ascl:1503.010)
- Moses J. I., et al., 2013, *ApJ*, 777, 34
- Mousis O., Deleuil M., Aguichine A., Marcq E., Naar J., Aguirre L. A., Bruger B., Gonçalves T., 2020, *ApJ*, 896, L22
- Ochsenbein F., Bauer P., Marcout J., 2000, *A&AS*, 143, 23
- Ofir A., 2014, *A&A*, 561, A138
- Osborn H. P., et al., 2016, *MNRAS*, 457, 2273
- Otegi J. F., Bouchy F., Helled R., 2020, *A&A*, 634, A43
- Owen J. E., Wu Y., 2013, *ApJ*, 775, 105
- Parviainen H., 2015, *MNRAS*, 450, 3233
- Penz T., Micela G., Lammer H., 2008a, *A&A*, 477, 309
- Penz T., Micela G., Lammer H., 2008b, *A&A*, 477, 309
- Pepe F. A., et al., 2010, in McLean I. S., Ramsay S. K., Takami H., eds, Society of Photo-Optical Instrumentation Engineers (SPIE) Conference Series Vol. 7735, Ground-based and Airborne Instrumentation for Astronomy III. p. 77350F, doi:10.1117/12.857122
- Pepe F., et al., 2021, *A&A*, 645, A96
- Persson C. M., et al., 2018, *A&A*, 618, A33
- Piskunov N., Valenti J. A., 2017, *A&A*, 597, A16

⁷ https://exofop.ipac.caltech.edu/tess

Poppenhaeger K., Ketzer L., Mallonn M., 2021, *MNRAS*, **500**, 4560

Quirrenbach A., et al., 2014, in Ramsay S. K., McLean I. S., Takami H., eds, Society of Photo-Optical Instrumentation Engineers (SPIE) Conference Series Vol. 9147, Ground-based and Airborne Instrumentation for Astronomy V. p. 91471F, doi:10.1117/12.2056453

Quirrenbach A., et al., 2018, in Evans C. J., Simard L., Takami H., eds, Society of Photo-Optical Instrumentation Engineers (SPIE) Conference Series Vol. 10702, Ground-based and Airborne Instrumentation for Astronomy VII. p. 107020W, doi:10.1117/12.2313689

Rajpaul V., Aigrain S., Osborne M. A., Reece S., Roberts S., 2015, *MNRAS*, **452**, 2269

Rauer H., et al., 2014, *Experimental Astronomy*, **38**, 249

Reddy B. E., Lambert D. L., Allende Prieto C., 2006, *MNRAS*, **367**, 1329

Ricker G. R., et al., 2015, *Journal of Astronomical Telescopes, Instruments, and Systems*, **1**, 014003

Rodriguez J. E., et al., 2019, *AJ*, **157**, 191

Ryabchikova T., Piskunov N., Kurucz R. L., Stempels H. C., Heiter U., Pakhomov Y., Barklem P. S., 2015, *Phys. Scr.*, **90**, 054005

Sanz-Forcada J., Micela G., Ribas I., Pollock A. M. T., Eiroa C., Velasco A., Solano E., García-Álvarez D., 2011, *A&A*, **532**, A6

Schlegel D. J., Finkbeiner D. P., Davis M., 1998, *ApJ*, **500**, 525

Smith J. C., et al., 2012, *PASP*, **124**, 1000

Southworth J., Wheatley P. J., Sams G., 2007, *MNRAS*, **379**, L11

Speagle J. S., 2020, *MNRAS*, **493**, 3132

Stassun K. G., Torres G., 2016, *AJ*, **152**, 180

Stassun K. G., Torres G., 2018, *ApJ*, **862**, 61

Stassun K. G., Kratter K. M., Scholz A., Dupuy T. J., 2012, *ApJ*, **756**, 47

Stassun K. G., Collins K. A., Gaudi B. S., 2017, *AJ*, **153**, 136

Stassun K. G., Corsaro E., Pepper J. A., Gaudi B. S., 2018a, *AJ*, **155**, 22

Stassun K. G., et al., 2018b, *AJ*, **156**, 102

Stumpe M. C., et al., 2012, *PASP*, **124**, 985

Suárez Mascareño A., Rebolo R., González Hernández J. I., Esposito M., 2015, *MNRAS*, **452**, 2745

Suárez Mascareño A., Rebolo R., González Hernández J. I., Esposito M., 2016, *MNRAS*, **457**, 2604

Torres G., 2010, *AJ*, **140**, 1158

Twicken J. D., Clarke B. D., Bryson S. T., Tenenbaum P., Wu H., Jenkins J. M., Girouard F., Klaus T. C., 2010, in Radziwill N. M., Bridger A., eds, Society of Photo-Optical Instrumentation Engineers (SPIE) Conference Series Vol. 7740, Software and Cyberinfrastructure for Astronomy. p. 774023, doi:10.1117/12.856790

Twicken J. D., et al., 2018, *PASP*, **130**, 064502

Valencia D., Sasselov D. D., O'Connell R. J., 2007, *ApJ*, **665**, 1413

Valenti J. A., Piskunov N., 1996, *A&AS*, **118**, 595

Van Eylen V., Agentoft C., Lundkvist M. S., Kjeldsen H., Owen J. E., Fulton B. J., Petigura E., Snellen I., 2018, *MNRAS*, **479**, 4786

Van Eylen V., et al., 2019, *AJ*, **157**, 61

Van Eylen V., et al., 2021, arXiv e-prints, p. arXiv:2101.01593

Vazan A., Sari R., Kessel R., 2020, arXiv e-prints, p. arXiv:2011.00602

Vogt S. S., et al., 1994, in Crawford D. L., Craine E. R., eds, Society of Photo-Optical Instrumentation Engineers (SPIE) Conference Series Vol. 2198, Instrumentation in Astronomy VIII. p. 362, doi:10.1117/12.176725

Wilson R. F., et al., 2018, *AJ*, **155**, 68

Wu Y., 2019, *ApJ*, **874**, 91

Yan F., Henning T., 2018, *Nature Astronomy*, **2**, 714

Yee S. W., Petigura E. A., von Braun K., 2017, *ApJ*, **836**, 77

Zechmeister M., Kürster M., 2009, *A&A*, **496**, 577

Zechmeister M., et al., 2018, *A&A*, **609**, A12

Zeng L., Sasselov D. D., Jacobsen S. B., 2016, *ApJ*, **819**, 127

Zeng L., et al., 2019, *Proceedings of the National Academy of Science*, **116**, 9723

da Silva L., et al., 2006, *A&A*, **458**, 609

del Peloso E. F., da Silva L., Porto de Mello G. F., Arany-Prado L. I., 2005, *A&A*, **440**, 1153

LIST OF AFFILIATIONS

- ¹Department of Space, Earth and Environment, Chalmers University of Technology, Onsala Space Observatory, 439 92 Onsala, Sweden
- ²Sub-department of Astrophysics, Department of Physics, University of Oxford, Oxford, OX1 3RH, UK
- ³Instituto de Astrofísica de Canarias, 38205 La Laguna, Tenerife, Spain
- ⁴Departamento de Astrofísica, Universidad de La Laguna, 38206 La Laguna, Tenerife, Spain
- ⁵Leiden Observatory, Leiden University, 2333CA Leiden, The Netherlands
- ⁶INAF - Osservatorio Astronomico di Palermo, Piazza del Parlamento 1, 90134 Palermo, Italy
- ⁷Astronomy Department and Van Vleck Observatory, Wesleyan University, Middletown, CT 06459, USA
- ⁸Dipartimento di Fisica, Università di Torino, via P. Giuria 1, 10125 Torino, Italy
- ⁹Department of Earth and Planetary Sciences, University of California, Riverside, CA 92521, USA
- ¹⁰Department of Space, Earth and Environment, Astronomy and Plasma Physics, Chalmers University of Technology, 412 96 Gothenburg, Sweden
- ¹¹Vanderbilt University, Physics and Astronomy Department, Nashville, TN 37235, USA
- ¹²Department of Astronomy, University of Tokyo, 7-3-1 Hongo, Bunkyo-ku, Tokyo 113-0033, Japan
- ¹³Department of Physics and Kavli Institute for Astrophysics and Space Research, Massachusetts Institute of Technology, Cambridge, MA 02139, USA
- ¹⁴Observatoire de l'Université de Genève, Chemin des Maillettes 51, 1290 Versoix, Switzerland
- ¹⁵Center for Astrophysics | Harvard & Smithsonian, 60 Garden Street, Cambridge, MA 02138, USA
- ¹⁶NASA Ames Research Center, Moffett Field, CA 94035, USA
- ¹⁷Stellar Astrophysics Centre, Department of Physics and Astronomy, Aarhus University, Ny Munkegade 120, DK-8000 Aarhus C, Denmark
- ¹⁸Nordic Optical Telescope, Apartado 474, E-38700 Santa Cruz de La Palma, Santa Cruz de Tenerife, Spain
- ¹⁹Space Telescope Science Institute, 3700 San Martin Dr, Baltimore, MD 21218, USA
- ²⁰NASA Exoplanet Science Institute – Caltech/IPAC Pasadena, CA 91125 USA
- ²¹Center for Planetary Systems Habitability and McDonald Observatory, The University of Texas, Austin TX USA
- ²²NASA Goddard Space Flight Center, Exoplanets and Stellar Astrophysics Laboratory (Code 667), Greenbelt, MD 20771, USA
- ²³Department of Physics and Astronomy, University of Kansas, Lawrence, KS, USA
- ²⁴Institute of Planetary Research, German Aerospace Center (DLR), Rutherfordstraße 2, 12489 Berlin, Germany
- ²⁵Thüringer Landessternwarte Tautenburg, Sternwarte 5, D-07778Tautenburg, Germany
- ²⁶NASA Exoplanet Science Institute, Caltech/IPAC, Mail Code 100-22, 1200 E. California Blvd., Pasadena, CA 91125, USA
- ²⁷Department of Astronomy and Tsinghua Centre for Astrophysics, Tsinghua University, Beijing 100084, China
- ²⁸Department of Astronomy and Astrophysics, University of California, Santa Cruz, 1156 High St. Santa Cruz, CA 95064, USA
- ²⁹Rheinisches Institut für Umweltforschung an der Universität zu

Köln, Aachener Strasse 209, 50931 Köln³⁰ Observatori Astronòmic
Albanyà, Camí de Bassegoda S/N, Albanyà 17733, Girona, Spain

³¹Astrobiology Center, NINS, 2-21-1 Osawa, Mitaka, Tokyo
181-8588, Japan

³²National Astronomical Observatory of Japan, NINS, 2-21-1
Osawa, Mitaka, Tokyo 181-8588, Japan

³³Department of Physics & Astronomy, Swarthmore College,
Swarthmore PA 19081, USA

³⁴Astronomical Institute ASCR, Fričova 298,251 65, Ondřejov,
Czech Republic

³⁵Center for Astronomy and Astrophysics, Technical University
Berlin, Hardenbergstr. 36, 10623 Berlin, Germany

³⁶U.S. Naval Observatory, Washington, D.C. 20392, USA

³⁷Proto-Logic LLC, 1718 Euclid Street NW, Washington, DC
20009, USA

³⁸Mullard Space Science Laboratory, University College London,
Holmbury St Mary, Dorking, Surrey, RH5 6NT, UK

³⁹NASA Goddard Space Flight Center, 8800 Greenbelt Rd.,
Greenbelt, MD 20771, USA

⁴⁰Department of Earth, Atmospheric and Planetary Sciences,
Massachusetts Institute of Technology, Cambridge, MA 02139,
USA

⁴¹Department of Aeronautics and Astronautics, MIT, 77 Mas-
sachusetts Avenue, Cambridge, MA 02139, USA

⁴²SETI Institute, Mountain View, CA 94043, USA

⁴³Department of Astrophysical Sciences, Princeton University, 4
Ivy Lane, Princeton, NJ 08544, USA

APPENDIX A: HARPS-N DATA

Table A1: Radial velocities and spectral activity indicators measured from TNG/HARPS-N spectra.

BJDTBD (days)	RV (m s ⁻¹)	σ_{RV} (m s ⁻¹)	CRX (m s ⁻¹ Np ⁻¹)	σ_{CRX} (m s ⁻¹ Np ⁻¹)	dlW (m ² s ⁻²)	σ_{dlW} (m ² s ⁻²)	H α	$\sigma_{H\alpha}$	NaD1	σ_{NaD1}	NaD2	σ_{NaD2}	BIS (m s ⁻¹)	σ_{BIS} (m s ⁻¹)	CCF_FHWM (km s ⁻¹)	CCF_CTR	S-index	$\sigma_{S-index}$	RR	T _{exp} (s)
1862.62923	6.677	1.716	-17.725	14.096	-2.805	3.196	0.6841	0.0020	0.2004	0.0024	0.2252	0.0026	40.628	3.763	6.364	42.479	1.133	0.025	45.7	36000
1862.66579	4.803	1.340	-9.964	11.112	-7.302	2.351	0.6850	0.0017	0.1974	0.0020	0.2216	0.0021	50.620	3.022	6.361	42.637	1.122	0.019	45.9	36000
1863.67080	10.163	1.235	10.432	10.103	-17.998	1.895	0.6832	0.0013	0.1945	0.0014	0.2200	0.0015	47.085	2.120	6.360	42.878	1.134	0.012	61.2	36000
1863.78184	11.454	1.180	10.563	9.470	-15.791	1.870	0.6844	0.0012	0.1951	0.0014	0.2196	0.0015	52.086	2.173	6.363	42.821	1.135	0.012	59.9	36000
1864.64888	15.901	1.490	14.765	12.360	-3.886	2.166	0.6855	0.0018	0.1975	0.0020	0.2236	0.0022	56.202	3.091	6.371	42.728	1.154	0.021	44.1	36000
1864.76150	13.179	1.573	20.240	13.193	-6.655	2.239	0.6827	0.0019	0.1968	0.0021	0.2284	0.0023	56.279	3.192	6.363	42.705	1.168	0.022	44.2	36000
1865.63156	5.489	1.193	14.321	10.311	-8.966	2.404	0.6816	0.0017	0.1991	0.0016	0.2245	0.0018	49.886	2.354	6.380	42.741	1.141	0.014	56.3	36000
1865.67718	1.903	1.434	19.806	11.892	-8.575	2.433	0.6913	0.0016	0.2000	0.0016	0.2219	0.0018	47.921	2.470	6.381	42.767	1.169	0.016	54.5	36000
1869.71163	0.562	1.555	-9.033	12.511	-1.288	2.907	0.6875	0.0017	0.2007	0.0021	0.2282	0.0023	63.711	3.314	6.383	42.718	1.193	0.022	41.9	36000
1896.56585	15.450	1.436	-3.060	11.637	-1.510	2.297	0.6878	0.0016	0.2237	0.0020	0.2459	0.0021	45.665	2.994	6.384	42.720	1.214	0.019	45.9	36000
1896.67552	13.918	1.388	-11.290	11.143	-0.808	2.814	0.6945	0.0016	0.2284	0.0020	0.2467	0.0022	43.192	3.018	6.386	42.659	1.232	0.019	45.8	36000
1898.56841	7.774	1.073	-3.532	8.928	0.857	2.620	0.7382	0.0014	0.2165	0.0015	0.2407	0.0016	56.588	2.184	6.387	42.631	1.446	0.013	60.1	36000
1925.63670	17.927	1.749	-2.160	14.638	-1.086	3.147	0.6863	0.0023	0.2479	0.0030	0.2599	0.0032	43.613	4.335	6.393	42.655	1.123	0.032	34.8	36000
1926.64886	19.622	2.118	-15.619	17.407	0.278	2.686	0.7005	0.0019	0.2343	0.0025	0.2600	0.0027	61.432	3.705	6.379	42.775	1.199	0.026	39.4	33000
1929.63674	10.128	1.193	-1.733	10.068	-7.456	2.374	0.6858	0.0018	0.2118	0.0020	0.2432	0.0022	64.774	2.971	6.372	42.772	1.175	0.020	47.1	3006.7
1930.42198	11.743	2.290	-24.218	19.108	-6.858	3.472	0.6937	0.0028	0.2339	0.0036	0.2459	0.0039	72.455	5.391	6.359	42.761	1.026	0.054	29.6	22000
1969.53394	-0.344	2.607	30.922	21.458	-23.205	3.971	0.6870	0.0031	0.3179	0.0047	0.3119	0.0049	52.253	6.453	6.339	42.808	1.146	0.041	25.9	36000
1971.52051	-2.375	1.298	-6.884	10.783	-44.328	2.698	0.6768	0.0016	0.2088	0.0019	0.2320	0.0021	63.058	2.849	6.316	43.145	1.011	0.019	48.1	36000
2000.41367	2.216	1.268	-8.945	10.158	-36.375	2.377	0.6827	0.0014	0.2021	0.0017	0.2323	0.0019	70.680	2.731	6.333	43.037	1.098	0.018	48.8	36000
2000.45426	4.378	1.489	-35.801	10.971	-25.136	2.493	0.6822	0.0015	0.2101	0.0021	0.2300	0.0022	75.663	3.223	6.333	43.001	1.067	0.022	42.4	36000
2001.42014	0.440	1.116	-11.500	8.915	-47.568	1.854	0.6692	0.0011	0.1937	0.0012	0.2238	0.0014	63.516	1.940	6.312	43.220	1.038	0.010	65.8	36000
2001.46039	-0.236	0.949	-23.011	7.095	-48.208	1.735	0.6705	0.0010	0.1916	0.0011	0.2242	0.0012	73.278	1.702	6.312	43.235	1.024	0.009	73.8	36000
2002.42024	-2.632	0.905	5.811	7.749	-53.132	2.055	0.6726	0.0014	0.1975	0.0014	0.2341	0.0016	56.605	1.996	6.303	43.312	1.001	0.011	64.2	36000
2002.46195	-0.506	1.311	13.103	10.881	-55.646	2.419	0.6712	0.0013	0.1967	0.0014	0.2353	0.0015	63.482	1.999	6.302	43.323	1.024	0.011	64.4	36000
2011.40922	27.029	2.205	-0.278	18.301	-29.220	3.238	0.6777	0.0024	0.1989	0.0033	0.2373	0.0036	48.672	5.219	6.321	43.031	1.123	0.041	30.2	33000
2011.44218	23.398	2.840	16.880	23.534	-32.558	4.204	0.6794	0.0034	0.2268	0.0054	0.2724	0.0060	54.360	8.605	6.334	42.874	1.069	0.075	20.8	2999.1
2012.40959	25.530	1.828	20.100	14.729	-24.200	2.180	0.6723	0.0016	0.2009	0.0020	0.2305	0.0022	33.998	3.095	6.342	42.922	1.105	0.021	45.2	33000
2012.44888	25.937	1.907	13.461	15.545	-27.838	2.505	0.6822	0.0018	0.2038	0.0022	0.2337	0.0024	45.139	3.518	6.342	42.933	1.157	0.026	40.7	33000
2013.42280	17.344	1.733	30.803	13.985	-20.223	2.502	0.6878	0.0020	0.2484	0.0025	0.2671	0.0026	35.178	3.499	6.354	42.858	1.152	0.024	41.5	33000
2013.44892	17.566	2.332	0.142	20.049	-13.318	4.085	0.6896	0.0035	0.2526	0.0049	0.2816	0.0054	54.908	7.476	6.371	42.777	1.121	0.063	23.7	1353.0
2013.47580	26.451	3.139	39.435	26.754	-9.109	5.318	0.6887	0.0042	0.3239	0.0064	0.3563	0.0069	14.612	8.586	6.351	42.772	1.103	0.075	21.0	2273.7
2014.42732	30.021	1.846	-7.137	15.000	-13.315	2.384	0.6837	0.0017	0.2265	0.0024	0.2527	0.0025	46.902	3.644	6.370	42.766	1.168	0.027	39.5	33000
2014.46531	28.500	1.704	16.641	13.691	-14.391	3.104	0.6796	0.0018	0.2181	0.0024	0.2506	0.0026	39.564	3.733	6.360	42.848	1.165	0.029	39.0	33000

Table B1. Possible periods and period ranges for the case of a unique single transit assuming a circular orbit. The excluded values/gaps correspond to transit times when a transit event would be seen in the light curves. The calculations were performed in steps of 0.1 days and include the data gap in Sector 14 as a possible location of a missed transit. The table does not include the 16.6-day period corresponding to the scenario of overlapping transits of this tentative planet and planet c, described in the text. If this period is correct, this would imply the presence of two transits in Sector 21.

Period (days)
20.3
22.8
26.0 - 26.1
28.0 - 28.1
30.4
32.7 - 33.8
36.4 - 36.5
39.2 - 42.2
45.5 - 45.7
49.0 - 56.3

This paper has been typeset from a $\text{\TeX}/\text{\LaTeX}$ file prepared by the author.