

AperTO - Archivio Istituzionale Open Access dell'Università di Torino

Maintenance in myeloma patients achieving complete response after upfront therapy: a pooled analysis

This is a pre print version of the following article:

Original Citation:

Availability:

This version is available <http://hdl.handle.net/2318/1732766> since 2022-07-01T18:07:26Z

Published version:

DOI:10.1007/s00432-018-2641-5

Terms of use:

Open Access

Anyone can freely access the full text of works made available as "Open Access". Works made available under a Creative Commons license can be used according to the terms and conditions of said license. Use of all other works requires consent of the right holder (author or publisher) if not exempted from copyright protection by the applicable law.

(Article begins on next page)

This is the author's pre-print version of the contribution published as:

Cerrato C, Di Raimondo F, De Paoli L, Spada S, Patriarca F, Crippa C, Mina R, Guglielmelli T, Ben-Yehuda D, Oddolo D, Nozzoli C, Angelucci E, Cascavilla N, Rizzi R, Rocco S, Baldini L, Ponticelli E, Marcatti M, Cangialosi C, Caravita T, Benevolo G, Ria R, Nagler A, Musto P, Tacchetti P, Corradini P, Offidani M, Palumbo A, Petrucci MT, Boccadoro M, Gay F. Maintenance in myeloma patients achieving complete response after upfront therapy: a pooled analysis. *J Cancer Res Clin Oncol*. 2018 Jul;144(7):1357-1366. doi: 10.1007/s00432-018-2641-5. Epub 2018 Apr 19. PMID: 29675792.

© Springer-Verlag GmbH Germany, part of Springer Nature 2018.

This is not the published version. The publisher's version is available at:

<https://link.springer.com/article/10.1007/s00432-018-2641-5>

| <https://doi.org/10.1007/s00432-018-2641-5>

When citing, please refer to the published version.

Link to this full text:

<http://hdl.handle.net/2318/1732766>

This full text was downloaded from iris-AperTO: <https://iris.unito.it/>

Maintenance in myeloma patients achieving complete response after upfront therapy: a pooled analysis

RUNNING TITLE: Maintenance therapy in MM patients achieving CR

Chiara Cerrato,¹ Francesco Di Raimondo,² Lorenzo De Paoli,³ Stefano Spada,¹ Francesca Patriarca,⁴ Claudia Crippa,⁵ Roberto Mina,¹ Tommasina Guglielmelli,⁶ Dina Ben-Yehuda,⁷ Daniela Oddolo,¹ Chiara Nozzoli,⁸ Emanuele Angelucci,⁹ Nicola Cascavilla,¹⁰ Rita Rizzi,¹¹ Stefano Rocco,¹² Luca Baldini,¹³ Elena Ponticelli,¹ Magda Marcatti,¹⁴ Clotilde Cangialosi,¹⁵ Tommaso Caravita,¹⁶ Giulia Benevolo,¹⁷ Roberto Ria,¹⁸ Arnon Nagler,¹⁹ Pellegrino Musto,²⁰ Paola Tacchetti,²¹ Paolo Corradini,²² Massimo Offidani,²³ Antonio Palumbo,^{1**} Maria Teresa Petrucci,²⁴ Mario Boccadoro,¹ Francesca Gay^{1*}

1 Myeloma Unit, Division of Hematology, University of Torino, Azienda-Ospedaliero Universitaria Città della Salute e della Scienza di Torino, Torino, Italy; 2 UOC Ematologia, Azienda Policlinico-OVE, University of Catania, Catania, Italy; 3 Division of Hematology, Department of Translational Medicine, University of Eastern Piedmont and Maggiore Hospital, Novara, Italy; 4 Dipartimento di Medicina, Università di Udine, Udine, Italy; 5 Spedali Civili Brescia, Divisione di Ematologia, Brescia, Italy; 6 Department of Clinical and Biological Sciences, Orbassano (TO), Italy; 7 Hematology Department Hadassah Medical Center, Jerusalem, Israel; 8 SODc Terapie cellulari e medicina trasfusionale AOUC Careggi, Firenze, Italy; 9 IRCCS Azienda Ospedaliera Universitaria San Martino – IST Istituto Nazionale per la Ricerca sul Cancro, Genova, Italy; 10 Hematology "Casa Sollievo della Sofferenza" Hospital IRCCS, San Giovanni Rotondo (FG), Italy; 11 Section of Hematology with Transplantation, Department of Emergency and Organ Transplantation, University of Bari Medical School, Bari, Italy; 12 UOSC Ematologia con Trapianto - AORN Cardarelli Napoli, Napoli, Italy; 13 Department of Oncology and Hemato-oncology, University of Milan, Fondazione IRCCS Cà Granda, Ospedale Maggiore Policlinico, Milan, Italy; 14 U.O. Ematologia e Trapianto di Midollo, IRCCS Ospedale San Raffaele, Milano, Italy; 15 Ospedali Riuniti Villa Sofia - Cervello Unità Operativa di Ematologia I e UTMO, Palermo, Italy; 16 UOC Ematologia Ospedale S. Eugenio ASL RM2, Roma, Italy; 17, SC Hematology, Città della Salute e della Scienza Hospital, Torino, Italy; 18 University of Bari "Aldo Moro" Medical School, Department of Biomedical Science, Internal Medicine "G. Baccelli" Policlinico, Bari, Italy; 19 Hematology Division, Chaim Sheba Medical Center, Tel HaShomer, Ramat Gan, Israel; 20 Scientific Direction, IRCCS Referral Cancer Center of Basilicata, Rionero in Vulture (PZ), Italy; 21 "Seràgnoli" Institute of Hematology", Department of Experimental, Diagnostic and Specialty Medicine, Bologna University School of Medicine, Bologna, Italy; 22 Dept. of Oncology and Hematology, University of Milano, Milano, Italy; 23 Clinica di Ematologia, AOU Ospedali Riuniti di Ancona, Loc. Torrette, Ancona, Italy; 24 Hematology, "Sapienza" University of Rome, Rome, Italy. **Currently Takeda employee.

***Corresponding author:** Francesca Gay, Azienda Ospedaliero-Universitaria Città della Salute e della scienza di Torino, Dipartimento di Biotecnologie Molecolari e Scienze per la Salute, via Genova 3, 10126 Torino, Italy; ORCID ID: 0000-0002-8619-412X; e-mail: fgay@cittadellasalute.to.it

Keywords: Multiple Myeloma (MM), maintenance therapy, newly diagnosed, Complete Response (CR), prognosis

Abstract word count: 200 words.

Text word count: 2502 words.

Number of tables: 0

Number of figures: 4

Supplementary appendix: 1 file.

Acknowledgements: the authors thank the patients who participated in the source trials, the nurses Manuela Grasso and Luca Merlone, the data managers Jessica Mastrovito and Elena Tigano, the editorial assistants Giorgio Schirripa and Ugo Panzani.

ABSTRACT

Purpose: Maintenance demonstrated to improve survival in newly diagnosed multiple myeloma (NDMM) patients and the achievement of complete response (CR) is a strong predictor of survival. Nevertheless, the role of maintenance according to response after induction/consolidation has not been investigated so far. To evaluate the impact of maintenance according to response, we pooled together and retrospectively analyzed data from 955 NDMM patients enrolled in two trials (GIMEMA-MM-03-05 and RV-MM-PI-209).

Methods: Primary endpoints were progression-free survival (PFS)1, PFS2 and overall survival (OS) of CR patients randomized to maintenance and no maintenance. Secondary endpoints were PFS1, PFS2 and OS in very good partial response/partial response (VGPR/PR) patients.

Results: Overall, 213 patients obtained CR after induction/consolidation; 118 received maintenance and 95 no maintenance. In patients achieving CR, maintenance significantly improved PFS1 (HR 0.50, $P < 0.001$), PFS2 (HR 0.58, $P 0.02$) and OS (HR 0.51, $P 0.02$) compared with no maintenance; the advantage was maintained across all the analyzed subgroups according to age, International Staging System (ISS) stage, cytogenetic profile and treatment. Similar features were seen in VGPR/PR patients.

Conclusion: Maintenance prolonged survival in CR and in VGPR/PR patients. The benefit in CR patients suggests the importance of continuing treatment in patients with chemo-sensitive disease.

INTRODUCTION

Multiple myeloma (MM) is an incurable plasma cell neoplasm that accounts for approximately 13% of hematologic cancers.(Altekruse et al. 2010) The standard of care for MM patients ineligible for autologous stem cell transplantation (ASCT) is the combination of melphalan-prednisone (MP) plus bortezomib (VMP) or thalidomide (MPT) or the association of lenalidomide and low-dose dexamethasone (Rd) (San Miguel et al. 2008; Mateos et al. 2010; Fayers et al. 2011; Benboubker et al. 2014). A progression-free survival (PFS) advantage with bortezomib in combination with Rd in comparison with Rd alone in patients who are not candidates to ASCT has recently been demonstrated (Durie et al. 2017).

In patients eligible for ASCT, the standard approach consists of a novel agent based induction regimen (proteasome inhibitor and/or immunomodulatory drug) followed by high-dose melphalan and ASCT (MEL200-ASCT) (Moreau et al. 2015).

Recent data clarified the role of maintenance therapy (Palumbo and Anderson 2011; Palumbo et al. 2015). In patients ineligible for ASCT, continuous therapy with lenalidomide and dexamethasone improved PFS and overall survival (OS) as compared with MPT (Benboubker et al. 2014). A consistent survival advantage was also observed in patients treated with bortezomib-thalidomide (VT) maintenance (Palumbo et al. 2010, 2014a; Mateos et al. 2012). In patients eligible for ASCT, four different trials demonstrated the PFS advantage of lenalidomide maintenance (Attal et al. 2012; McCarthy et al. 2012; Palumbo et al. 2014b; Jackson et al. 2016a), while a recent meta-analysis has shown also a significant OS benefit (Attal et al. 2016).

The association between depth of response and survival had been highlighted in many studies (van de Velde et al. 2007). So far only one randomized trial (Myeloma XI) investigated the role of a response-adapted approach. Preliminary results showed a response upgrade in around 40% of patients and a significant PFS improvement in patients achieving a suboptimal response after IMiDs who received sequential treatment with bortezomib-cyclophosphamide-dexamethasone (VCD). On the other hand, patients who reached very good partial response/complete response (VGPR/CR) did not receive any further induction, assuming that the achievement of high quality response may not need intensification (Jackson et al. 2016b). No trial has so far prospectively evaluated the effect of intensified treatment or prolonged treatment in patients achieving good quality responses.

We pooled together data from two phase III trials comparing maintenance vs no maintenance. The aim of our analysis was to evaluate the impact of maintenance according to response achieved after induction/consolidation therapy. As primary objective, we evaluated the effect of maintenance

treatment in patients achieving high-quality response to induction/consolidation, defined as CR; as secondary objective, we analyzed the impact of maintenance in patients with suboptimal response (VGPR/PR) after induction/consolidation therapy.

MATERIAL AND METHODS

Patients and treatment

We selected two phase III trials (GIMEMA-MM-03-05 and RV-MM-PI-209) coordinated by the same principal investigator. In both trials, newly diagnosed MM patients received maintenance or no maintenance after induction/consolidation. Details and results of the two studies were previously published (Palumbo et al. 2010, 2014b). Additional material and methods are reported in the Supplementary Appendix.

Clinical endpoints

The primary endpoints of the analysis were PFS1, PFS2 and OS in patients eligible to maintenance or no maintenance who achieved CR after induction/consolidation. Secondary endpoints were PFS1, PFS2 and OS in patients eligible to maintenance or no maintenance who achieved a VGPR/PR after induction/consolidation (Durie et al. 2006; European Medicines Agency 2012).

Statistical analysis

We performed a retrospective, non-preplanned analysis. Data from the two trials were pooled together and analysed. As patients were randomized at study entry but started maintenance after a median of 10 months from randomization (that corresponds to the median time of induction/consolidation) a landmark analysis with a landmark point at 10 months from start of therapy was performed. We included patients alive and progression free after 10 months from start of treatment, and who had achieved at least a partial response (PR) (Durie et al. 2006) after induction/consolidation. Patients were stratified according to response achieved (CR vs VGPR/PR). Time-to-event data were analyzed using the Kaplan–Meier method; treatment groups were compared with the log-rank test. The Cox proportional hazards models were used to estimate adjusted hazard ratios (HRs) and 95% confidence intervals (CIs) for the main comparisons; Grambsch and Therneau test was used for testing the proportional hazard assumption.

Subgroup analyses were performed to determine the effects of maintenance vs no maintenance in the different subgroups using interaction terms between treatment and each of the covariate

included in the Cox model. All HRs were estimated with their 95% CI and two sided p-values. Differences between categorical variables were examined by Fisher's exact test. Data were analyzed as of December, 2016 using R (Version 3.1.1).

RESULTS

Patients

Data from 955 patients enrolled in the 2 trials were pooled together; 550 patients were eligible for maintenance. A total of 213 patients achieved a CR after induction/consolidation, 118 of them were randomized to maintenance and 95 to no maintenance. Three-hundred and sixteen patients achieved a VGPR/PR after induction/consolidation, 151 of them received maintenance treatment and 165 did not (Figure S1). Of 269 patients receiving maintenance, 120 discontinued within two years of therapy. The main reasons for discontinuation were PD (66%), toxicity (18%) and patients' or medical decision (16%). Of note, rate of discontinuation of maintenance was higher in patients older than 75 years vs younger (68% vs 42%; $P=0.037$).

Patient demographics and disease characteristics in CR and VGPR/PR patients randomized to maintenance and no maintenance were well balanced (Table S1). High-risk patients (ISS stage III and high-risk cytogenetic profile) were equally distributed in the maintenance and no maintenance groups.

CR population

The median follow-up from landmark point was 56 months. The median PFS1 was 47 months for the maintenance group vs 28 months for the no maintenance group (HR 0.50, 95% CI 0.35-0.71, $P<0.001$) (Figure 1 Panel A). The PFS1 benefit associated with maintenance therapy was consistent in the different subgroups, although it was more pronounced in patients ≤ 65 years (HR 0.26) as compared with those aged 66-75 years (HR 0.65) and >75 years (HR 0.89) ($P=0.04$ for interaction). In accordance, a more pronounced advantage in the RV-MM-PI-209 trial where only patients ≤ 65 years were enrolled was noticed. No other differences were detected between the different analyzed subgroups (Figure 1 Panel B).

The median PFS2 was not reached in the maintenance group and was 57 months in the no maintenance group (HR 0.58, 95% CI 0.37-0.91, $P=0.02$), suggesting a long-term survival benefit associated with maintenance treatment (Figure 2 Panel A). The PFS2 benefit with maintenance was consistent in all the different analyzed subgroups (Figure 2 Panel B).

The 5-year OS was 82% vs 66% (median not reached in both groups), respectively in patients who received maintenance compared with those who did not (HR 0.51, 95% CI 0.29-0.91, P= 0.02), (Figure 3 Panel A). The OS advantage was confirmed among all analyzed subgroups, but it was less evident in patients with ISS stage I (HR 0.97) (Figure 3 Panel B). This analysis is however limited by the low number of events so far in this good prognosis group.

VGPR/PR population

The median follow-up from landmark point was 44 months. Of 151, 11 patients increased their best response during maintenance treatment. The median PFS1 was 28 months in the maintenance group vs 18 months in the no maintenance group (HR 0.55, 95% CI 0.42-0.72, P<0.001) (Figure S2 Panel A). Similarly to CR patients, the PFS1 benefit associated with maintenance therapy was consistent in all the analyzed subgroups, and it was more evident in patients \leq 65 years (HR 0.5) and aged 66-75 (HR 0.54) as compared with those aged >75 years (HR 0.86) (Figure S2 Panel B).

The median PFS2 was 53 months vs 41 months in patients randomized to maintenance vs no maintenance (HR 0.64, 95% CI 0.46-0.89, P=0.01) (Figure S3 Panel A). No difference was observed in the subgroups analysis but the advantage was less evident again in patients aged > 75 years (HR 0.78) (Figure S3 Panel B).

The median OS was not reached in the two groups, and the 5-year OS was 63% vs 57% (HR 0.75, 95% CI 0.50-1.12, P=0.16) (Figure S4 Panel A). The advantage was again more evident in patients aged \leq 65 years (HR 0.56) in comparison with those aged 66-75 years (HR 0.87) or >75 years (HR 0.85) (Figure S4 Panel B).

Interestingly, the highest survival rates (in terms of PFS1, PFS2 and OS) were noticed in CR patients receiving maintenance; survival of patients achieving a CR who did not receive maintenance was similar to the one of VGPR/PR patients treated with maintenance (Figure 4, Panel A, B, C).

DISCUSSION

Previous reports demonstrated that maintenance treatment was associated not only with a PFS, but in some studies also with an OS advantage (Fayers et al. 2011; Attal et al. 2012, 2016; McCarthy et al. 2012; Palumbo et al. 2014a, b, 2015; Benboubker et al. 2014; Jackson et al. 2016a), and nowadays a growing number of clinical studies are including maintenance as part of the therapeutic approach. The impact on survival of achieving a CR in comparison with VGPR/PR is well known

(van de Velde et al. 2007) and the value of prolonging treatment in patients with suboptimal response (VGPR/PR) is commonly recognized and accepted. Nevertheless, whether therapy should be continued in patients achieving CR remains an open issue. To the best of our knowledge, this pooled analysis is the first study to investigate the effect of a maintenance therapy in MM patients according to the response achieved after induction/consolidation.

Prolonged treatment in patients with suboptimal response to therapy improved PFS1, PFS2 and OS, as expected (Figures S2, S3, S4). Of note, maintenance therapy significantly improved PFS1 (5-year PFS1: 42 % vs 25%, HR 0.50, P<0.001), PFS2 (5-year PFS2: 62% vs 45%, HR 0.58, P=0.02) and OS (5-year OS: 82% vs 66%, HR 0.51, P=0.02) also in patients who achieved a CR after induction/consolidation (Figures 1, 2, 3). Within both response categories (CR and VGPR/PR populations), this benefit could depend on the ability of maintaining the best response achieved rather than on increasing response during maintenance therapy. In fact, only around 7% of VGPR/PR patients increased their response during maintenance. Unfortunately, no data on MRD evaluation were available, to evaluate if maintenance was able to improve the depth of response also in a proportion of CR patients. However, Jackson et al. recently showed that also MRD negative patients had a PFS benefit with maintenance therapy.(Jackson et al. 2016a) Both these findings suggest that prolonged treatment, in patients with chemo-sensitive disease and high-quality responses, is an effective strategy to at least maintain (if not to increase) the depth of response obtained during first line therapy and consequently to improve survival.

In our analyses, the highest survival was observed in CR patients receiving maintenance; survival of patients achieving a CR who did not receive maintenance was similar to the one of VGPR/PR patients treated with maintenance (Figure 4), as if CR patients not receiving continuous therapy are likely to lose their potential advantage compared with patients obtaining a suboptimal response. Again, similar features were reported by Jackson et. al in MRD negative patients not receiving maintenance, who showed an outcome similar to MRD patients who received lenalidomide maintenance (Jackson et al. 2016a).

The subgroup analysis showed that the survival advantage for maintenance was retained in all the evaluated subsets of patients; the benefit seemed to be stronger in patients aged ≤ 65 years, and 66-75 years if compared with patients >75 years. The older population has probably the worst tolerance to treatment, and consequently the highest discontinuation and lowest benefit. Consistently, in our study, the rate of discontinuation within 2 years was significantly higher in patients aged > 75 years, even though the analysis was limited by the low number of patients in this subgroup.

The analysis has some limitations. Data on cytogenetic profile were missing in about 30% of patients, and ISS data were lacking in 10% of patients. The two trials included different treatment

strategies as well as different duration of maintenance: maintenance was administered for up to 24 months in the GIMEMA-MM-03-05 and until progression in the RV-MM-PI-209. Nevertheless, the median duration of lenalidomide therapy in the RV-MM-PI-209 was 23 months. In both trials, maintenance randomization was performed at study entry, and not after induction and consolidation. To overcome this limitation, we performed a landmark analysis at 10 months (median duration of induction/consolidation) and we included only patients actually eligible for maintenance. Of note, a higher proportion of patients aged ≤ 65 years obtained less than a CR after induction/consolidation therapy, if compared with elderly patients. Younger patients were mostly enrolled in the RV-MM-PI-209 trial: they received lenalidomide and dexamethasone (Rd) induction and half of them were treated with melphalan-prednisone-lenalidomide consolidation, which is now considered a suboptimal induction-consolidation approach (Palumbo et al. 2014b). PFS2 was not a prespecified objective in the original study protocols. When the date of progression after second-line therapy was not available, the start date of third-line therapy was used to estimate PFS2. Second line therapies can impact on PFS2 and OS, yet they were not prespecified in both study protocols and they were mostly left to the investigators' discretion.

Maintenance therapy plays an important role in maintaining response and consequently in improving survival in MM. CR, as was defined by IMWG criteria applied at the time of the two trials, is certainly a suboptimal marker of outcome. The IMWG has recently revised response criteria and added new definitions of CR besides the standard categories, according to the new sensitive techniques available to detect MRD (Paiva et al. 2008, 2011, 2012; Kumar et al. 2016). Unfortunately, no MRD data were available at time of analysis, thus it was not possible to evaluate how many CR-MRD positive patients improved to MRD negative status with maintenance, or to define the impact of maintenance in terms of long-term survival in these patients.

In conclusion, maintenance therapy improved PFS1, PFS2 and OS in MM patients independently of response achieved after induction/consolidation therapy (CR or VGPR/PR), with the highest survival rates with prolonged treatment in patients achieving CR. This could be partly related to a suboptimal definition of CR if compared with the new response criteria including MRD, even if similar features have been recently seen also in MRD negative patients. However, CR is still the easiest and most widespread method of response evaluation and our data suggest that maintenance therapy should be administered regardless of patient response to maximize outcome. Further studies on the use of MRD will clarify this issue; if the achievement of MRD negativity will imply cure of the disease, maintenance therapy could probably be stopped. Nevertheless, if MRD negativity will be associated with a higher chemo-sensitivity and a subsequent higher burden reduction but not

really with cure, maintenance therapy will then remain a good strategy to keep the disease under control.

Prospective randomized trials evaluating a response-adapted approach – possibly including MRD negativity and sustained MRD negativity – are needed to clarify the role of prolonged treatment according to response.

Supplementary material: please, see the Supplementary Appendix file.

The two source studies are registered at ClinicalTrials.gov, numbers NCT01063179 and NCT00551928.

Conflicts of interest: FDR has received honoraria from Celgene, BMS, and Janssen; FP has received honoraria from Celgene, Janssen, BMS; CN has served on the Advisory Board for Celgene; TC has received consultancy fees from Takeda and served on the advisory board for Janssen, Celgene, BMS, Amgen; PM has received Honoraria from Janssen-Cilag and Celgene; PC has received honoraria from Celgene; MO has received honoraria from Celgene; AP is currently a Takeda employee; MTP has received honoraria from Celgene, Janssen-Cilag, BMS, Amgen, Takeda; MB has received research funding from Amgen, BMS, Celgene, Janssen, Mundipharma, Novartis, Sanofi; and honoraria from AbbVie, Amgen, BMS, Celgene, Janssen, Novartis, Sanofi. FG has served on the advisory board for Takeda, Seattle Genetics, Roche, Mundipharma, Janssen; and received honoraria from Takeda, Amgen, Celgene, Janssen, BMS. All the other authors have no potential conflicts of interest.

Ethical approval: All procedures performed in both source studies involving human participants (GIMEMA-MM-03-05 and RV-MM-PI-209) were in accordance with the ethical standards of the institutional and/or national research committee and with the 1964 Helsinki declaration and its later amendments or comparable ethical standards.

Informed consent: Informed consent was obtained from all individual participants included in both source studies.

References

- Altekruse S, Kosary C, Krapcho M, et al (2010) SEER Cancer Statistics Review, 1975-2007. In: Natl. Cancer Inst. - Bethesda, MD 2010. https://seer.cancer.gov/archive/csr/1975_2007/. Accessed 31 Jul 2017
- Attal M, Lauwers-Cances V, Marit G, et al (2012) Lenalidomide Maintenance after Stem-Cell Transplantation for Multiple Myeloma. *N Engl J Med* 366:1782–1791. doi: 10.1056/NEJMoa1114138
- Attal M, Palumbo A, Holstein SA, et al (2016) Lenalidomide (LEN) maintenance (MNTC) after high-dose melphalan and autologous stem cell transplant (ASCT) in multiple myeloma (MM): A meta-analysis (MA) of overall survival (OS). *J Clin Oncol* 34:abstr. 8001.
- Benboubker L, Dimopoulos MA, Dispenzieri A, et al (2014) Lenalidomide and Dexamethasone in Transplant-Ineligible Patients with Myeloma. *N Engl J Med* 371:906–917. doi: 10.1056/NEJMoa1402551
- Durie B, Harousseau J-L, Miguel J, et al (2006) International uniform response criteria for multiple myeloma. *Leukemia* 20:1467–1473. doi: 10.1038/sj.leu.2404284
- Durie BGM, Hoering A, Abidi MH, et al (2017) Bortezomib with lenalidomide and dexamethasone

versus lenalidomide and dexamethasone alone in patients with newly diagnosed myeloma without intent for immediate autologous stem-cell transplant (SWOG S0777): a randomised, open-label, phase 3 trial. *Lancet* (London, England) 389:519–527. doi: 10.1016/S0140-6736(16)31594-X

- European Medicines Agency (2012) Appendix 1 to the guideline on the evaluation of anticancer medicinal products in man. Methodological consideration for using progression-free survival (PFS) or disease-free survival (DFS) in confirmatory trials. http://www.ema.europa.eu/docs/en_GB/document_library/Scientific_guideline/2013/01/WC500137126.pdf. Accessed 31 Jul 2017
- Fayers PM, Palumbo A, Hulin C, et al (2011) Thalidomide for previously untreated elderly patients with multiple myeloma: meta-analysis of 1685 individual patient data from 6 randomized clinical trials. *Blood* 118:1239–1247. doi: 10.1182/blood-2011-03-341669
- Jackson GH, Davies FE, Pawlyn C, et al (2016a) Lenalidomide Is a Highly Effective Maintenance Therapy in Myeloma Patients of All Ages; Results of the Phase III Myeloma XI Study. *Blood* 128:abst. 1143.
- Jackson GH, Davies FE, Pawlyn C, et al (2016b) Response Adapted Induction Treatment Improves Outcomes for Myeloma Patients; Results of the Phase III Myeloma XI Study. *Blood* 128:abstr. 244.
- Kumar S, Paiva B, Anderson KC, et al (2016) International Myeloma Working Group consensus criteria for response and minimal residual disease assessment in multiple myeloma. *Lancet Oncol* 17:e328–e346. doi: 10.1016/S1470-2045(16)30206-6
- Mateos M-V, Oriol A, Martínez-López J, et al (2012) Maintenance therapy with bortezomib plus thalidomide or bortezomib plus prednisone in elderly multiple myeloma patients included in the GEM2005MAS65 trial. *Blood* 120:2581–2588.
- Mateos M-V, Richardson PG, Schlag R, et al (2010) Bortezomib plus melphalan and prednisone compared with melphalan and prednisone in previously untreated multiple myeloma: updated follow-up and impact of subsequent therapy in the phase III VISTA trial. *J Clin Oncol* 28:2259–66. doi: 10.1200/JCO.2009.26.0638
- McCarthy PL, Owzar K, Hofmeister CC, et al (2012) Lenalidomide after Stem-Cell Transplantation for Multiple Myeloma. *N Engl J Med* 366:1770–1781. doi: 10.1056/NEJMoa1114083
- Moreau P, Attal M, Facon T (2015) Frontline therapy of multiple myeloma. *Blood* 125:3076–84. doi: 10.1182/blood-2014-09-568915
- Paiva B, Gutiérrez NC, Rosiñol L, et al (2012) High-risk cytogenetics and persistent minimal residual disease by multiparameter flow cytometry predict unsustained complete response after autologous stem cell transplantation in multiple myeloma. *Blood* 119:687–691. doi: <https://doi.org/10.1182/blood-2011-07-370460>
- Paiva B, Martínez-López J, Vidriales M-B, et al (2011) Comparison of immunofixation, serum free light chain, and immunophenotyping for response evaluation and prognostication in multiple myeloma. *J Clin Oncol* 29:1627–33. doi: 10.1200/JCO.2010.33.1967
- Paiva B, Vidriales M-B, Cerveró J, et al (2008) Multiparameter flow cytometric remission is the most relevant prognostic factor for multiple myeloma patients who undergo autologous stem cell transplantation. *Blood* 112:4017–4023. doi: <https://doi.org/10.1182/blood-2008-05-159624>
- Palumbo A, Anderson K (2011) Multiple myeloma. *N Engl J Med* 364:1046–60. doi: 10.1056/NEJMra1011442
- Palumbo A, Bringhen S, Larocca A, et al (2014a) Bortezomib-Melphalan-Prednisone-Thalidomide Followed by Maintenance With Bortezomib-Thalidomide Compared With Bortezomib-Melphalan-Prednisone for Initial Treatment of Multiple Myeloma: Updated Follow-Up and Improved Survival. *J Clin Oncol* 32:634–640. doi: 10.1200/JCO.2013.52.0023
- Palumbo A, Bringhen S, Rossi D, et al (2010) Bortezomib-melphalan-prednisone-thalidomide followed by maintenance with bortezomib-thalidomide compared with bortezomib-melphalan-prednisone for initial treatment of multiple myeloma: a randomized controlled trial. *J Clin*

Oncol 28:5101–9. doi: 10.1200/JCO.2010.29.8216

Palumbo A, Cavallo F, Gay F, et al (2014b) Autologous transplantation and maintenance therapy in multiple myeloma. *N Engl J Med* 371:895–905. doi: 10.1056/NEJMoa1402888

Palumbo A, Gay F, Cavallo F, et al (2015) Continuous Therapy Versus Fixed Duration of Therapy in Patients With Newly Diagnosed Multiple Myeloma. *J Clin Oncol* 33:3459–66. doi: 10.1200/JCO.2014.60.2466

San Miguel JF, Schlag R, Khuageva NK, et al (2008) Bortezomib plus melphalan and prednisone for initial treatment of multiple myeloma. *N Engl J Med* 359:906–17. doi: 10.1056/NEJMoa0801479

van de Velde HJK, Liu X, Chen G, et al (2007) Complete response correlates with long-term survival and progression-free survival in high-dose therapy in multiple myeloma. *Haematologica* 92:1399–1406. doi: 10.3324/haematol.11534

Titles and legends to figures

Figure 1 - Progression-free survival 1 according to maintenance/ no maintenance in CR patients:
(A) analysis in all patients; (B) subgroup analysis

Figure 2 - Progression-free survival 2 according to maintenance/ no maintenance in CR patients:
(A) analysis in all patients; (B) subgroup analysis

Figure 3 - Overall survival according to maintenance/ no maintenance in CR patients:
(A) analysis in all patients; (B) subgroup analysis

Figure 4 - Survival curves according to best response achieved and maintenance/no maintenance therapy: (A) Progression free survival 1; (B) Progression free survival 2; (C) Overall survival

Figures

Figure 1. Progression-free survival 1 according to maintenance/ no maintenance in CR patients

Panel A – Analysis in all patients

Figure 1

Panel A

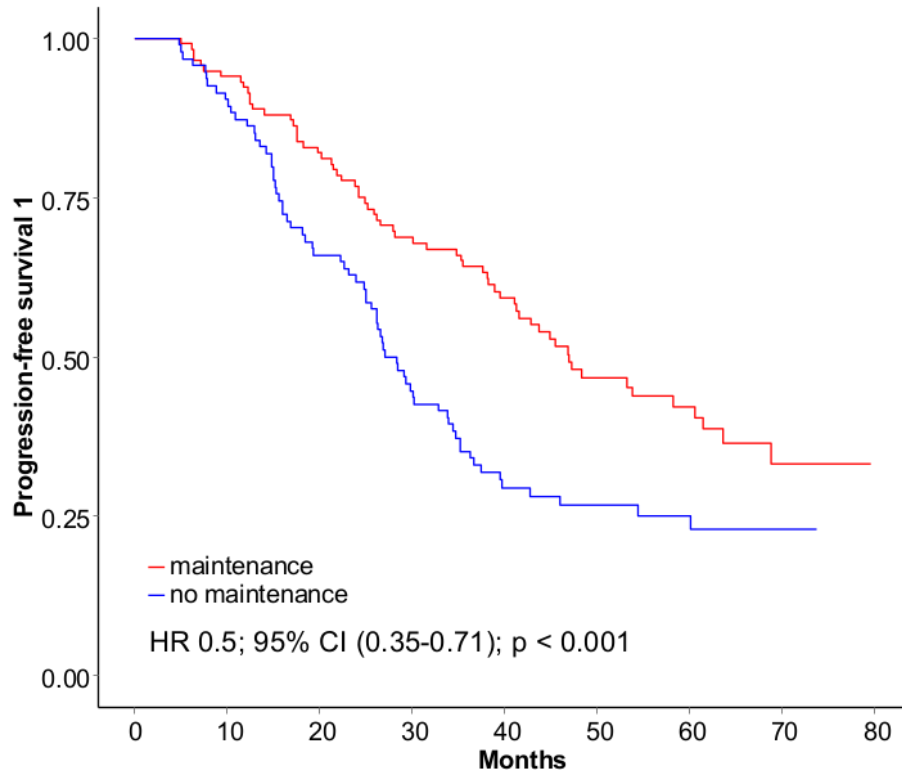
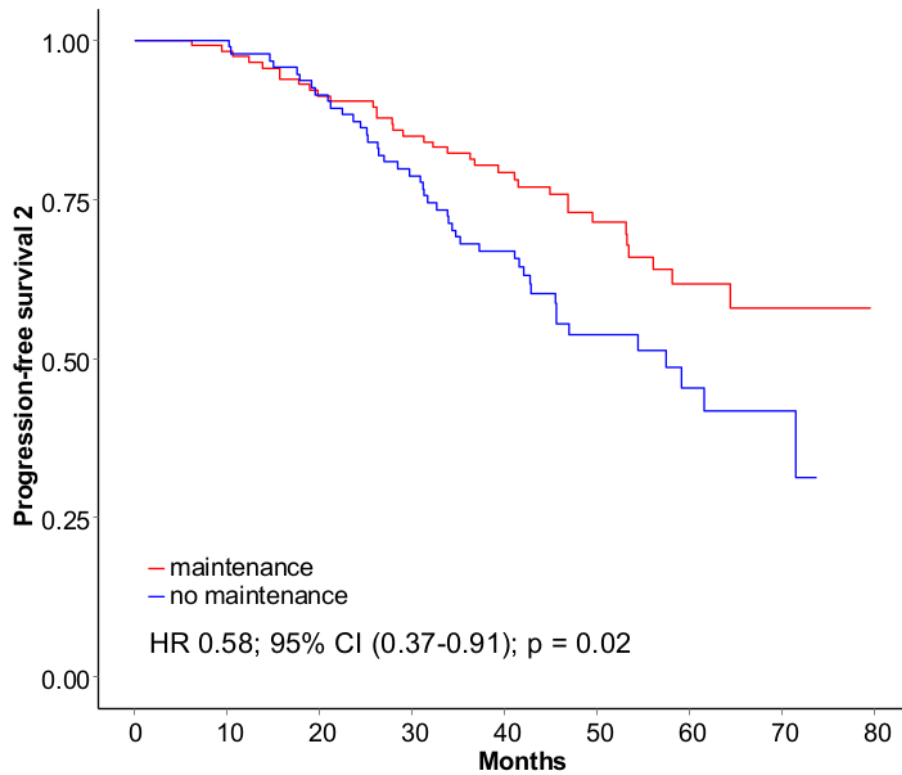


Figure 2. Progression-free survival 2 according to maintenance/ no maintenance in CR patients

Panel A – Analysis in all patients

Figure 2

Panel A



Panel B – Subgroup analysis

Figure 2

Panel B

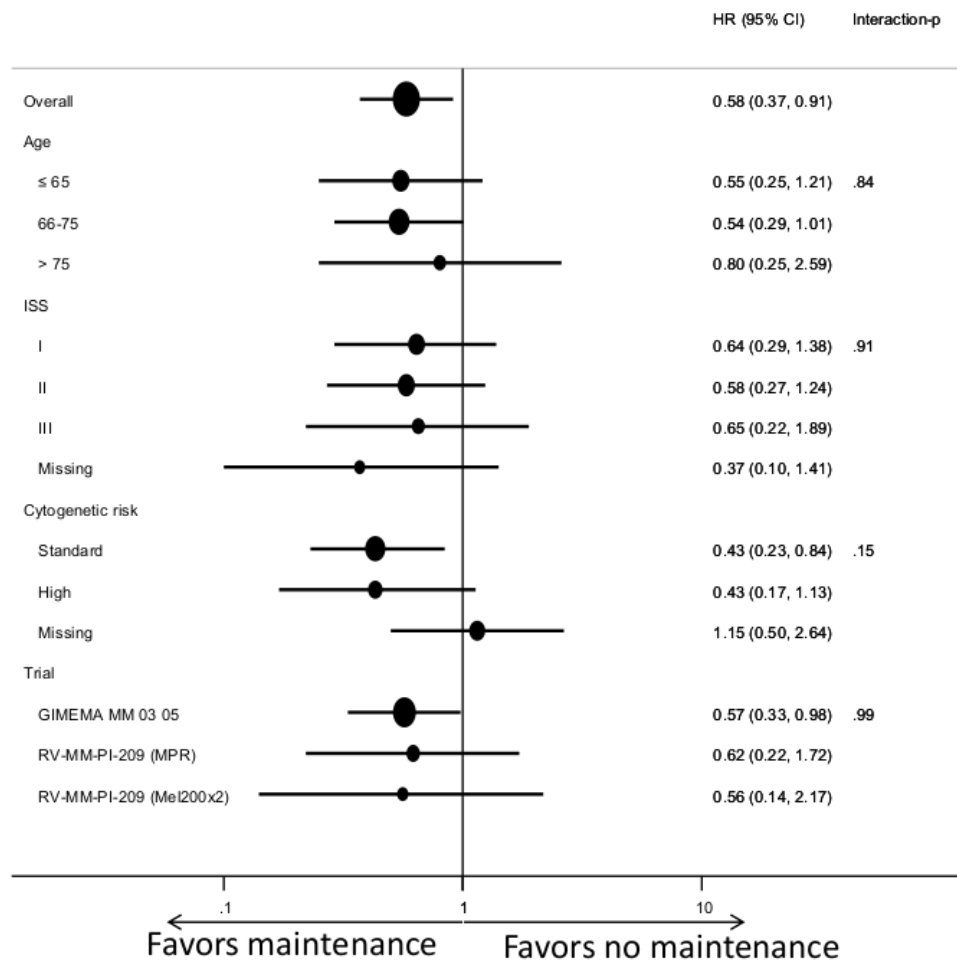
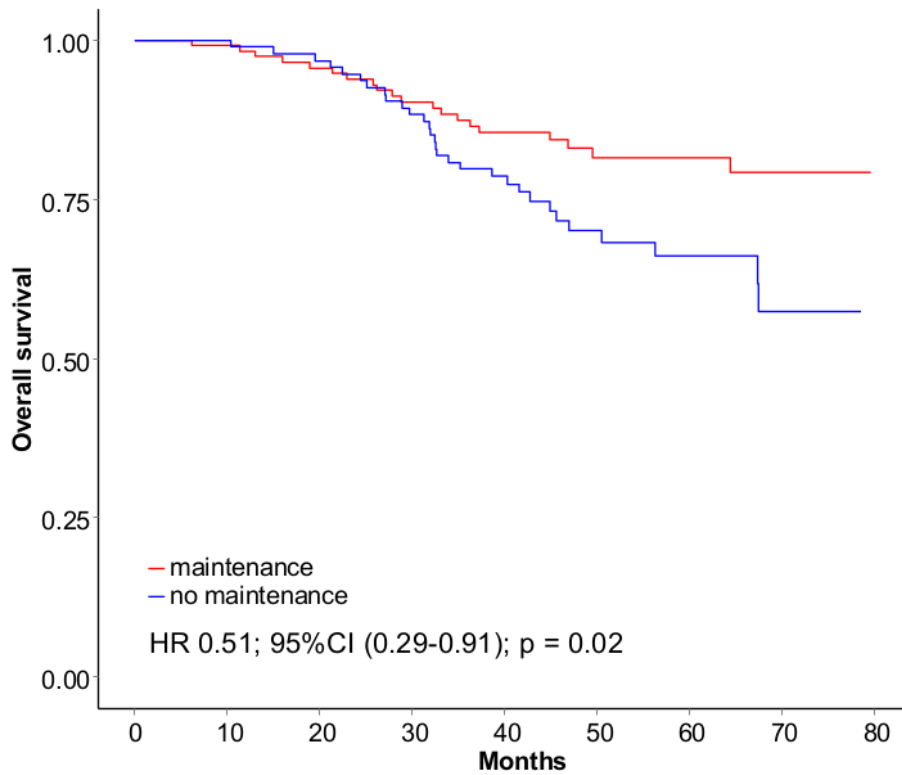


Figure 3. Overall survival according to maintenance/ no maintenance in CR patients

Panel A – Analysis in all patients

Figure 3

Panel A



Panel B – Subgroup analysis

Figure 3

Panel B

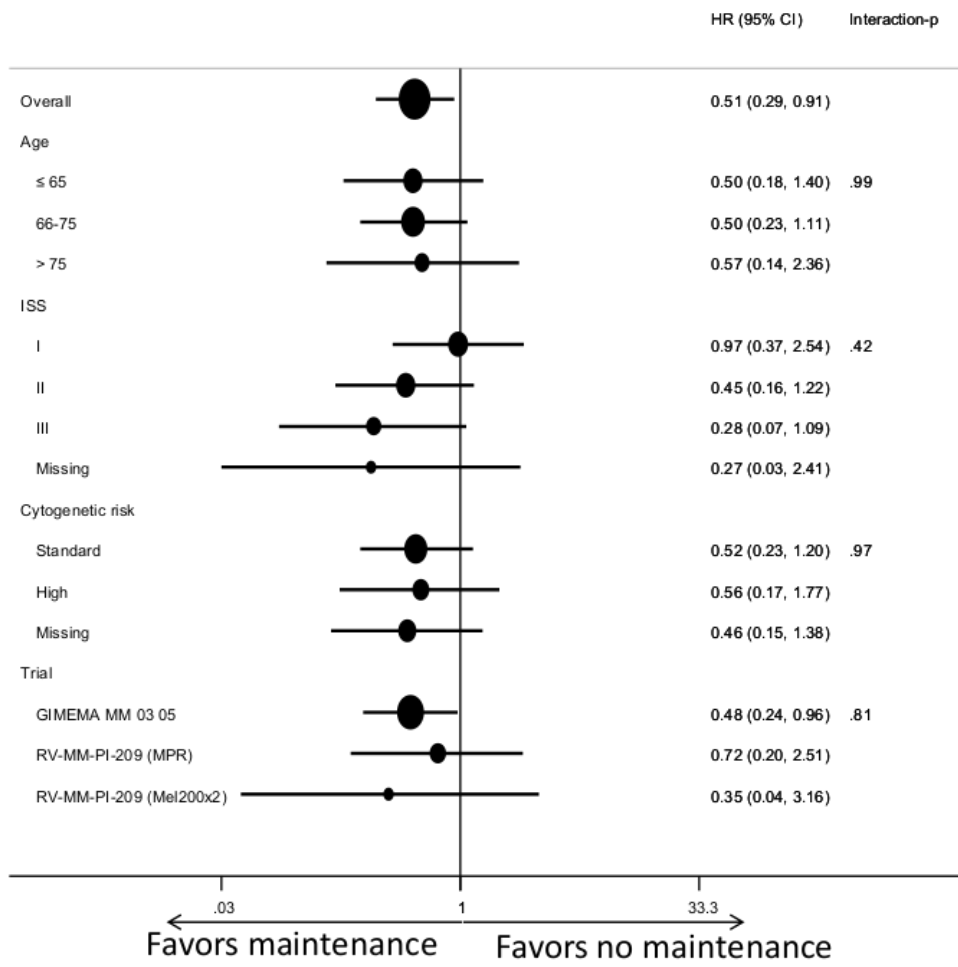
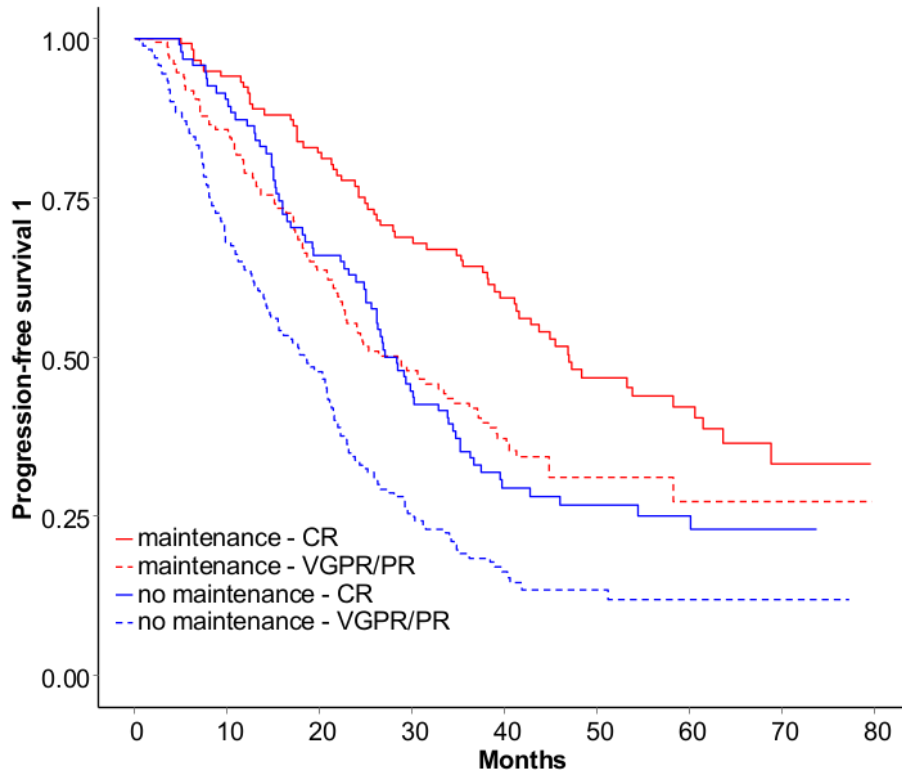


Figure 4. Survival curves according to best response achieved and maintenance/no maintenance therapy

Panel A – Progression free survival 1

Figure 4

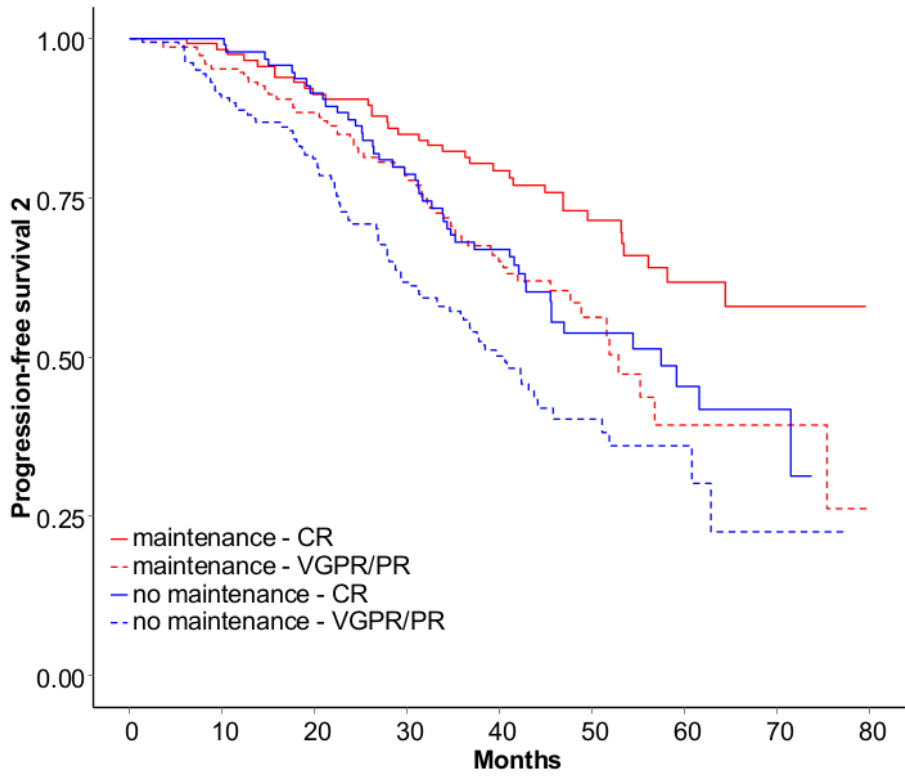
Panel A



Panel B – Progression free survival 2

Figure 4

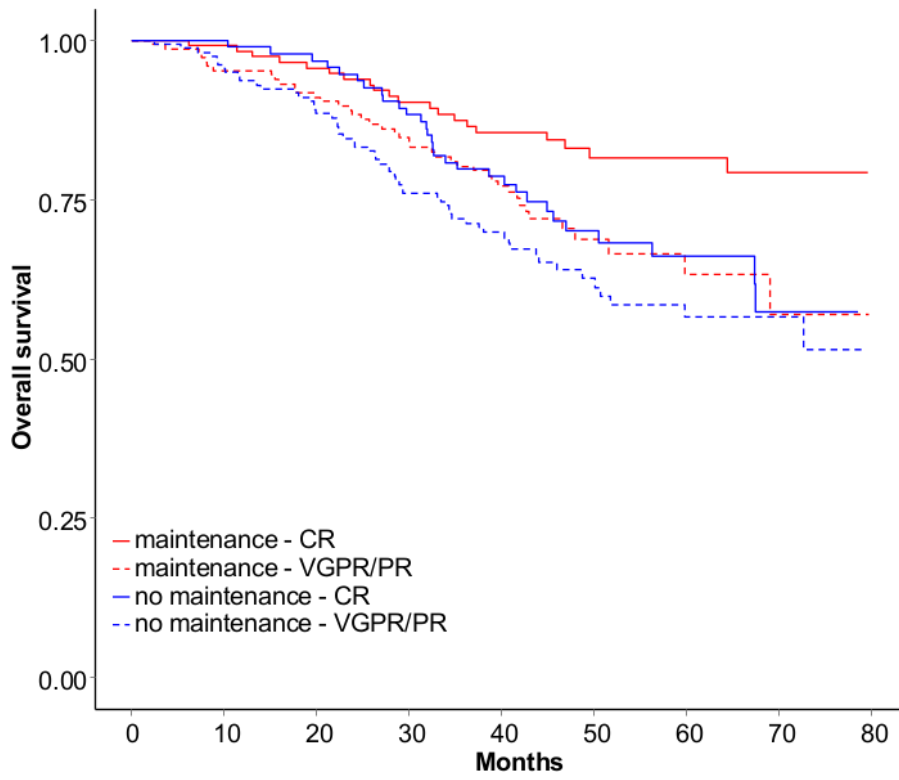
Panel B



Panel C – Overall survival

Figure 4

Panel C



**Maintenance in myeloma patients achieving complete response after upfront therapy:
a pooled analysis**

SUPPLEMENTARY APPENDIX

Chiara Cerrato,¹ Francesco Di Raimondo,² Lorenzo De Paoli,³ Stefano Spada,¹ Francesca Patriarca,⁴ Claudia Crippa,⁵ Roberto Mina,¹ Tommasina Guglielmelli,⁶ Dina Ben-Yehuda,⁷ Daniela Oddolo,¹ Chiara Nozzoli,⁸ Emanuele Angelucci,⁹ Nicola Cascavilla,¹⁰ Rita Rizzi,¹¹ Stefano Rocco,¹² Luca Baldini,¹³ Elena Ponticelli,¹ Magda Marcatti,¹⁴ Clotilde Cangialosi,¹⁵ Tommaso Caravita,¹⁶ Giulia Benevolo,¹⁷ Roberto Ria,¹⁸ Arnon Nagler,¹⁹ Pellegrino Musto,²⁰ Paola Tacchetti,²¹ Paolo Corradini,²² Massimo Offidani,²³ Antonio Palumbo,^{1**} Maria Teresa Petrucci,²⁴ Mario Boccadoro,¹ Francesca Gay^{1*}

1 Myeloma Unit, Division of Hematology, University of Torino, Azienda-Ospedaliero Universitaria Città della Salute e della Scienza di Torino, Torino, Italy; 2 UOC Ematologia, Azienda Policlinico-OVE, University of Catania, Catania, Italy; 3 Division of Hematology, Department of Translational Medicine, University of Eastern Piedmont and Maggiore Hospital, Novara, Italy; 4 Dipartimento di Medicina, Università di Udine, Udine, Italy; 5 Spedali Civili Brescia, Divisione di Ematologia, Brescia, Italy; 6 Department of Clinical and Biological Sciences, Orbassano (TO), Italy; 7 Hematology Department Hadassah Medical Center, Jerusalem, Israel; 8 SODc Terapie cellulari e medicina trasfusionale AOUC Careggi, Firenze, Italy; 9 IRCCS Azienda Ospedaliera Universitaria San Martino ó IST Istituto Nazionale per la Ricerca sul Cancro, Genova, Italy; 10 Hematology "Casa Sollievo della Sofferenza" Hospital IRCCS, San Giovanni Rotondo (FG), Italy; 11 Section of Hematology with Transplantation, Department of Emergency and Organ Transplantation, University of Bari Medical School, Bari, Italy; 12 UOSC Ematologia con Trapianto - AORN Cardarelli Napoli, Napoli, Italy; 13 Department of Oncology and Hemato-oncology, University of Milan, Fondazione IRCCS Cà Granda, Ospedale Maggiore Policlinico, Milan, Italy; 14 U.O. Ematologia e Trapianto di Midollo, IRCCS Ospedale San Raffaele, Milano, Italy; 15 Ospedali Riuniti Villa Sofia - Cervello Unità Operativa di Ematologia I e UTMO, Palermo, Italy; 16 UOC Ematologia Ospedale S. Eugenio ASL RM2, Roma, Italy; 17, SC Hematology, Città della Salute e della Scienza Hospital, Torino, Italy; 18 University of Bari óAldo Moroó Medical School, Department of Biomedical Science, Internal Medicine óG. Baccellió Policlinico, Bari, Italy; 19 Hematology Division, Chaim Sheba Medical Center, Tel HaShomer, Ramat Gan, Israel; 20 Scientific Direction, IRCCS Referral Cancer Center of Basilicata, Rionero in Vulture (PZ), Italy; 21 óSeragnolió Institute of Hematologyó, Department of Experimental, Diagnostic and Specialty Medicine, Bologna University School of Medicine, Bologna, Italy; 22 Dept. of Oncology and Hematology, University of Milano, Milano, Italy; 23 Clinica di Ematologia, AOU Ospedali Riuniti di Ancona, Loc. Torrette, Ancona, Italy; 24 Hematology, óSapienzaó University of Rome, Rome, Italy. **Currently Takeda employee.

***Corresponding author:** Francesca Gay, Azienda Ospedaliero-Universitaria Città della Salute e della scienza di Torino, Dipartimento di Biotecnologie Molecolari e Scienze per la Salute, via Genova 3, 10126 Torino, Italy; e-mail: fgay@cittadellasalute.to.it

Patients and treatment

The two source studies were approved by the institutional review boards of each participating center and are registered at ClinicalTrials.gov, numbers NCT01063179 and NCT00551928. All patients provided written informed consent before entering the source trials.

Regarding treatments, briefly, in the GIMEMA-MM-03-05 trial, patients were randomized to VMP followed by no maintenance or bortezomib-melphalan-prednisone-thalidomide (VMPT) followed by VT maintenance for up to 2 years; in the RV-MM-PI-209 trial, after 4 courses of induction with Rd, by using a 2-by-2 partial factorial design, patients were allocated to consolidation with either 2 courses of MEL200-ASCT or 6 courses of melphalan-prednisone-lenalidomide (MPR), followed by maintenance with lenalidomide until progression (PD) or no maintenance. Second line therapy was not pre-specified in both the trials, but ASCT was recommended in patients relapsing from MPR in the RV-MM-PI-209 trial.

Clinical endpoints

PFS1 is defined as the time from randomization in the first line to progression/death after first line. Disease progression is defined according to standard criteria (Durie et al. 2006). Patients in remission after or during first-line therapy are censored at the last date they are known to be in remission. Patients progressing or dying after or during first-line therapy are considered as failures at the date of progression/death whichever comes first. PFS2 is defined as the time from randomization in the first line to progression/death after second line (European Medicines Agency 2012). Patients who progressed after first-line therapy, received second-line therapy and progressed/died after second-line treatment are considered as failures at the date of progression/death after second line whichever comes first. Patients who died after first-line therapy without progressing or receiving second-line therapy are considered as failures at the date of death. Patients who progressed after first-line therapy, received second-line therapy and did not progress/die after second-line treatment are censored at the date they are known to be in remission/alive. Patients in remission after or during first-line therapy are censored at the last date they are known to be in remission.

OS is the time from randomization in the first line to death. Patients who died are considered as failures at the date of death. Patients who did not die are censored at the last date they are known to be alive.

Statistical analysis

To account for potential confounders, the Cox models for the comparison maintenance vs no maintenance were adjusted for the trial effect (and for specific induction/consolidation therapies if they differed within the trial), age, ISS stage and cytogenetic profile.

References

Durie B, Harousseau J-L, Miguel J, et al (2006) International uniform response criteria for multiple myeloma. *Leukemia* 20:1467-1473. doi: 10.1038/sj.leu.2404284

European Medicines Agency (2012) Appendix 1 to the guideline on the evaluation of anticancer medicinal products in man. Methodological consideration for using progression-free survival (PFS) or disease-free survival (DFS) in confirmatory trials. http://www.ema.europa.eu/docs/en_GB/document_library/Scientific_guideline/2013/01/WC500137126.pdf. Accessed 31 Jul 2017

Supplementary Table and Figures legends

Table S1 - Baseline patients characteristics according to response achieved after induction/consolidation therapy

Figure S1 - Study flow

Figure S2 - Progression-free survival 1 in patients achieving VGPR/PR: (A) analysis in all patients; (B) subgroup analysis

Figure S3 - Progression-free survival 2 in patients achieving VGPR/PR: (A) analysis in all patients; (B) subgroup analysis

Figure S4 - Overall survival in patients achieving VGPR/PR: (A) analysis in all patients; (B) subgroup analysis

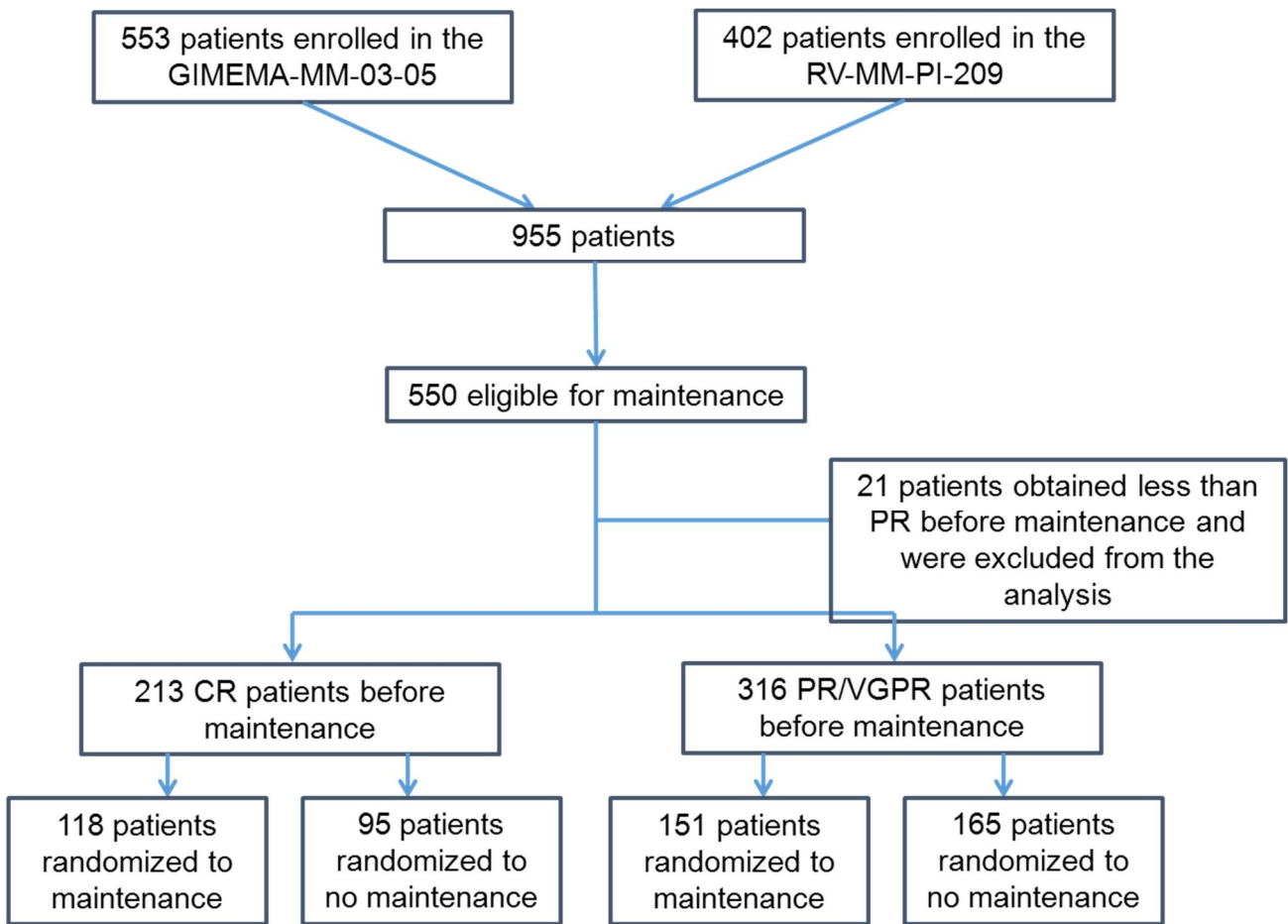
Table S1 - Baseline patient characteristics according to response achieved after induction/consolidation therapy

		CR patients		PR/VGPR patients	
		Maint (N = 118)	No Maint (N = 95)	Maint (N = 151)	No Maint (N = 165)
		N (%)	N (%)	N (%)	N (%)
Sex	F	65 (55)	47 (49)	70 (46)	82 (50)
	M	53 (45)	48 (51)	81 (54)	83 (50)
Age	Median (IRQ)	68 (62 - 72)	67 (60 - 72)	63 (55 - 71)	66 (58 - 71)
	Ö65	42 (36)	41 (43)	88 (58)	78 (47)
	66 ó 75	66 (56)	42 (44)	45 (30)	70 (42)
	> 75	10 (8)	12 (13)	18 (12)	17 (10)
ISS	I	38 (32)	32 (34)	67 (44)	66 (40)
	II	48 (41)	31 (33)	42 (28)	53 (32)
	III	22 (19)	20 (21)	28 (19)	28 (17)
	Missing	10 (8)	12 (13)	14 (9)	18 (11)
Cytogenetic profile	Standard	60 (51)	47 (49)	84 (56)	89 (54)
	High	20 (17)	17 (18)	33 (22)	27 (16)
	Missing	38 (32)	31 (33)	34 (23)	49 (30)
ASCT	No	98 (83)	70 (74)	106 (70)	125 (76)
	Yes	20 (17)	25 (26)	45 (30)	40 (24)
Protocol	GIMEMA-MM-03-05	80 (68)	56 (59)	66 (44)	86 (52)
	RV-MM-PI-209	38 (32)	39 (41)	85 (56)	79 (48)

Not all percentages sum up to 100 because of rounding.

CR, complete response; PR, partial response; VGPR, very good partial response; maint, maintenance; ASCT, autologous stem cell transplantation.

Figure S1 - Study flow



CR, complete response; PR, partial response; VGPR, very good partial response.

