

AperTO - Archivio Istituzionale Open Access dell'Università di Torino

Composition, abundance and phytoplasma infection in the hawthorn psyllid fauna of northwestern Italy

This is the author's manuscript

Original Citation:

Availability:

This version is available <http://hdl.handle.net/2318/100778> since

Published version:

DOI:10.1007/s10658-008-9367-1

Terms of use:

Open Access

Anyone can freely access the full text of works made available as "Open Access". Works made available under a Creative Commons license can be used according to the terms and conditions of said license. Use of all other works requires consent of the right holder (author or publisher) if not exempted from copyright protection by the applicable law.

(Article begins on next page)



UNIVERSITÀ DEGLI STUDI DI TORINO

This is an author version of the contribution published on:

Questa è la versione dell'autore dell'opera:

[European Journal of Plant Pathology, 123, 2009, DOI 10.1007/s10658-008-9367-1]

The definitive version is available at:

La versione definitiva è disponibile alla URL:

[<http://link.springer.com/article/10.1007/s10658-008-9367-1>]

Composition, abundance and phytoplasma infection in the hawthorn psyllid fauna of northwestern Italy

Tedeschi Rosemarie¹, Lauterer Pavel², Brusetti Lorenzo³, Tota Federica¹, Alma Alberto¹

¹ DiVaPRA – Entomologia e Zoologia applicate all’Ambiente “C. Vidano”, Facoltà di Agraria, Università degli Studi di Torino, Via Leonardo da Vinci 44, 10095 Grugliasco (TO), Italy.

² Department of Entomology, Moravian Museum Hviezdoslavova 29a, 62700 Brno, Czech Republic.

³ DISTAM, Università degli Studi di Milano, Via Celoria 2, 20133 Milano, Italy.

Corresponding author: Rosemarie Tedeschi, e-mail: rosemarie.tedeschi@unito.it, fax:

+39.011.2368675

Abstract

Hawthorn (*Crataegus monogyna* Jacquin) is one of the natural hosts of *Cacopsylla melanoneura* (Förster), the acknowledged vector of “*Candidatus Phytoplasma mali*”, the causal agent of Apple Proliferation (AP) disease, a serious and growing problem for apple production in Europe, particularly in Northern Italy. Wild plants could be important sources of both insects and phytoplasmas, but their role in the epidemiology of phytoplasma diseases and their insect vectors has never been thoroughly examined. *C. melanoneura*'s primary host is hawthorn, a plant closely related to apple which often grows wild near orchards. Other psyllid species feed on hawthorn, but no data are available on their possible role as phytoplasma vectors. We investigated the hawthorn's psyllid fauna in northwestern Italy using yellow sticky traps, beat trays, and molecular analyses from 2003-2005, to study the relationship between hawthorn, the phytoplasma and the insect vector. Population dynamics were monitored, and insects and hawthorn samples were analysed by PCR, RFLP, and DNA sequencing for the presence of phytoplasmas. *C. melanoneura* was the dominant psyllid species, followed by *C. peregrina*, *C. affinis* and *C. crataegi*. PCR and RFLP analyses revealed the presence of different fruit tree phytoplasmas in hawthorn plants, and in all four psyllid species .

Keywords: *Cacopsylla affinis*, *Cacopsylla crataegi*, *Cacopsylla melanoneura*, *Cacopsylla peregrina*, fruit tree phytoplasmas

Introduction

Psyllids of the genus *Cacopsylla* are the main vectors of fruit tree phytoplasmas in temperate regions and recent studies have revealed vector-phytoplasma specificity. “*Candidatus Phytoplasma pyri*”, the causal agent of pear decline (PD), is transmitted by *C. pyricola* (Förster) in the UK (Davies et al., 1992) and by *C. pyri* (L.) in France (Lemoine, 1991) and Italy (Carraro et al., 1998a). “*Ca. Phytoplasma prunorum*”, the causal agent of European stone fruit yellows (ESFY), is transmitted by *C. pruni* (Scopoli) (Carraro et al., 1998b; 2001) while “*Ca. Phytoplasma mali*”, the causal agent of apple proliferation (AP) by *C. picta* (Förster) (syn. *C. costalis*) (Frisinghelli et al., 2000; Jarausch et al., 2003) and by *C. melanoneura* (Förster) (Tedeschi et al., 2002; Tedeschi and Alma, 2004). These insects transmit phytoplasmas as both nymphs and adults (Carraro et al., 1998a; Tedeschi and Alma 2004). They complete one or more generations per year on wild or cultivated rosaceous plants (Pomaceae and Drupaceae) and often overwinter as adults on alternative host plants. Tedeschi et al. (2006) observed transovarial transmission of the European stone fruit yellows phytoplasma in *C. pruni*.

Recently, many research programs have focused on the insect vectors of “*Ca. Phytoplasma mali*” because of the serious damage the disease causes in central Europe, particularly in Italy. Owing to the phytoplasma’s rapid spread and ensuing economic losses, mandatory controls measures have been introduced into Italy by a Ministerial Decree. This action has resulted in increased research on the vectors.

The relationship between *C. melanoneura* and hawthorn (*Crataegus monogyna* Jacquin) plants is particularly interesting. *C. melanoneura* has always been reported as a primarily hawthorn feeding species (Lal, 1934; Ossiannilsson, 1992) but has recently become an economically injurious pest of apple trees (Alma et al., 2000; Tomasi et al., 2000; Tedeschi et al., 2002). In northwestern Italy, *C. melanoneura* is considered the main vector of “*Ca. Phytoplasma mali*” (Tedeschi et al., 2003; Tedeschi et al., 2004) and apple proliferation (AP) infection has been increasing steadily.

Wild plants could be important as sources of both insects and phytoplasma in the epidemiology of the phytoplasma diseases, yet this has never been thoroughly investigated.

The hawthorn is a deciduous shrub or small tree native to Europe and to the region from North Africa to the Himalaya. It is widespread in northwestern Italy up to 1000 m a.s.l. in glades, hedgerows and woodland. The hawthorn psyllids have been studied in the past (Lal, 1934; Missonier, 1956; Sutton, 1983; Sutton 1984) but its ability to transmit phytoplasma has recently given it new prominence.

The widespread prevalence of hawthorn in wild areas and in the surroundings of apple orchards induced us to study its importance in the transmission of phytoplasma to apples, by insect vectors. Furthermore, this work highlights the other psyllid species present on hawthorn and presents evidence for their possible role in phytoplasma transmission.

Materials and Methods

Sites

Two sites (C1 and C2) were selected at altitudes between 480 and 580 m a.s.l., in the Aosta Valley (northwestern Italy). The region has an economically important tradition of apple production, and symptoms of “*Ca. Phytoplasma mali*” infection have often been recorded in the last ten years. Sites were located near apple orchards, contained wild *Cr. monogyna*, and were surrounded by meadows, wild areas, and vineyards.

Temperatures (mean, minimum and maximum) were recorded daily throughout the experimental period and mean weekly temperatures were calculated.

Insect samplings

In 2003, yellow sticky traps (150 × 80 mm Rebell® giallo, Andermatt Biocontrol AG, Switzerland) were used to sample the psyllid fauna living on *Cr. monogyna*. Three traps were hung in the

hawthorn canopy at each site from mid-February until the end of October, being changed weekly.

To identify psyllids, samples were removed from sticky traps using a drop of Bio-Clear (Bio-Optica, Milan, Italy), dissected, and then classified by examining male and female terminalia (Hodkinson and White, 1979).

Surveys were repeated using the same methods in 2004 and 2005. Sampling using a beating tray was also carried out in the latter two years from mid-February to the end of October, better to assess psyllid population densities and to collect material for molecular analyses. When not otherwise stated, beating tray collections occurred weekly. For population studies, hawthorn branches were beaten for 20 min at each site, but to collect insects for molecular analyses beating was often prolonged. When possible, 50 specimens per species were collected at each site on every sampling date. During beating tray sampling, plants were also carefully examined for eggs and nymphs. In late summer, hawthorn samples were collected from all sites to test for phytoplasmas by molecular analyses.

Phytoplasma identification

Total DNA was extracted from batches of 5 adult psyllids following a protocol adapted from Marzachi et al. (1998). Plant DNA was isolated from phloem tissue from field-collected branch samples following the phytoplasma enrichment procedure described by Ahrens and Seemüller (1992). Approximately 1.0 g of fresh plant material was used for each sample. Insect and plant DNAs were amplified with the nested PCR (Polymerase chain reaction) firstly with phytoplasma universal primer pair P1/P7 (Schneider et al., 1995) and then with the AP-group specific primer pair fO1/rO1 (Lorenz et al., 1995) after a 1:40 dilution. Reaction and cycling condition were as described in the original papers. PCR amplification products were analyzed by 1% agarose gel electrophoresis, stained with ethidium bromide, and visualized on a U.V. transilluminator. Specific AP-group phytoplasma profiles were obtained by RFLP (Restriction fragment length

polymorphism) with the endonucleases *SspI* and *RsaI*. Seven microliters of the amplicon were digested with 3 U of *SspI* for 4.5 h at 37°C and with 5 U of *RsaI* at 37°C overnight, respectively. Seventeen PCR-amplified DNA fragments fO1/rO1, two from each psyllid species and phytoplasma revealed by RFLP as well as from field-collected hawthorn samples were directly sequenced. PCR products were purified using a QIAquick PCR purification kit (QIAGEN, Milan, Italy) according to the manufacturer's instructions. Purified products were then sequenced with the fO1 and rO1 primers using a DYEnamic ET Terminator Cycle Sequencing kit (Pharmacia) and an ABI 310 automated sequencer (Applied Biosystems). The resulting sequences were compared with the sequence database of the National Center for Biotechnology Information using BLAST (<http://www.ncbi.nlm.nih.gov/BLAST>).

Statistical and phylogenetic analysis.

The proportion of infected insects was estimated with the maximum likelihood estimator, p^{\wedge} , calculated with Swallow (1985): $p^{\wedge} = 1 - H^{1/k}$, where H is the observed fraction of uninfected insects and k is the number of insects per group, in this case five. The closest match to each sequence was found with BLASTN (Altschul et al., 1990). Chimera sequences were checked using the Chimera check program at the Ribosomal Data Project II (RDPII, <http://rdp8.cme.msu.edu/cgis/chimera.cgi?su=SSU>). Then, sequences were aligned using ClustalX v.1.83 (Thompson et al., 1997). Alignments were checked manually and poorly aligned or divergent regions were eliminated using GBlocks v.0.91b (Castresana, 2000) with a minimum block of five and allowed gap positions equal to half. Tree construction was done with Treecon v.1.3b (Van de Peer and Wachter, 1994), using neighbor-joining methods and a bootstrap analysis with 1,000 replicates.

Accession numbers.

Sequences were deposited in the EMBL nucleotide sequence database (GenBank/EMBL/DDBJ) under accession numbers from AM404163 to AM404176, AM746983, AM746984 and AM749199.

Results

Psyllid fauna

Ten species of psyllids were identified in traps during 2003 (Tab. 1). *C. melanoneura* was dominant species at both sites (70.24%), followed by *C. peregrina*, which was more abundant at site C2 than at site C1. Few specimens of *C. crataegi* (0.38%) were captured at either sites, while other species were encountered sporadically. In-depth examinations of the apical part of the aedeagus, the shape of the paramere, and the forewing of 3,700 specimens of *C. melanoneura*, revealed that the *C. melanoneura* population in the Aosta Valley is mixed with *C. affinis*. The two species resemble each other so closely that females of the two species cannot reliably be distinguished. Considering the difficulty of discriminating the two species, especially in females the complex *C. melanoneura*-*C. affinis* has been denoted as *C. melanoneura* in the present work, unless otherwise specified. The proportion of the two species was assessed using only the males among the 3700 specimens observed with *C. affinis* makes representing 21.6% of the overwintered population and 6.9% of newly emerged adults. Abundances of the three main hawthorn-feeding psyllids were similar across both sites. Two peaks of abundance, were observed for overwintered and newly emerged *C. melanoneura* adults, one in the second half of March and another in the first half of May respectively. *C. peregrina* emerged at the end of April, reaching a first peak in mid-May. The population density then decreased rapidly and a second peak was observed in the second half of September. *C. crataegi* specimens were collected only in March-May.

Psyllid population dynamics

In 2004 and 2005, the population sampling was focused on the two most abundant species, *C. melanoneura* and *C. peregrina*. As measured by beating, peak densities of overwintered *C. melanoneura* adults were reached between mid March and the beginning of April, when the mean week temperature exceeded 10°C. Highest number of emerged new generation adults was recorded in mid-May, when weekly mean temperature reached 20°C. By contrast, the first peak collected with sticky traps was generally delayed compared with beating trays (figs. 1, 2). Mating was observed from the second half of February until mid-March, while the presence of the eggs on the plants was recorded from the last week of March until the first week of April. Nymphs were found from the first week of April until mid-May.

Following winter, overwintered adults persisted at the 2 sites during an average of 13.5 ± 0.29 (\pm SEM) weeks, compared with only 4.25 ± 0.25 (\pm SEM) weeks for springtime adults. The data obtained from both sticky trap and beat tray samplings revealed that the overwintered population is more abundant on hawthorn plants than the newly emerged population, as shown in figure 1.

Nymphs of *C. peregrina* were observed in the second half of April and adults emerged at the end of the month, with peak densities occurring between mid- and late- May. A particularly high density was recorded at site 2 at the end of May 2004 (1061 specimens). After the end of July in 2004 and the end of June in 2005, when the mean weekly temperature exceeded 20°C, no specimens of *C. peregrina* were caught until late August. At the end of September, when the mean week temperature reached 15°C, the second peak of *C. peregrina* density was observed, while after the third week of October, when the mean weekly temperature fell below 10°C, no specimens were collected (Fig. 1, 2). Males captured at the beginning of September were darker (brownish) than those collected in summer, whereas females did not darken for another two weeks. In the second half of September, mating specimens were observed.

Phytoplasma detection

Performing nested PCR with the specific primers fO1/rO1 allowed us to observe amplification products of the expected size (1080 bp) and to detect phytoplasmas of the AP-group (16Sr-X) in all four of the focal psyllid species (Tab. 2), and in hawthorn plants. The proportion of infected insects ranged from 3.17% to 4.34% for *C. melanoneura* in the two study years, while lower percentages were recorded for *C. peregrina*. Estimates of 2.63% and 4.36% infection rate of *C. crataegi* were recorded in 2004 and 2005, respectively.

To ascertain the infection frequency of *C. affinis*, 50 unambiguously identified male samples were individually screened for phytoplasma presence, and two of them were positive for phytoplasmas of the AP-group (4.00%).

Two of 8 hawthorn leaf samples in 2004 and 1 of 12 in 2005 tested positive for AP-group phytoplasma with fO1/rO1 nested PCR. RFLP analyses carried out with the endonucleases *SspI* and *RsaI* detected “*Ca. Phytoplasma mali*”, “*Ca. Phytoplasma pyri*” and “*Ca. Phytoplasma prunorum*” in the psyllids, as well as the hawthorn plants (Fig. 2).

RFLP analyses carried out with *SspI* on most of the fO1/rO1 amplicons revealed that 70.80% and 69.50% of *C. melanoneura* samples in 2004 and 2005, respectively, carried “*Ca. Phytoplasma mali*” while the remaining samples were not digested by *SspI*.

Similarly 53.85% and 21.74% of *C. peregrina* samples in 2004 and 2005, respectively, showed the presence of *Ca. Phytoplasma mali*, while the rest of the samples were undigested. The RFLP performed with *RsaI* on the samples undigested by *SspI* showed a restriction profile typical of “*Ca. Phytoplasma prunorum*” in three samples of *C. peregrina*, while all the other amplicons were ascribed, by elimination, to “*Ca. Phytoplasma pyri*” (tab. 3).

The amplicons derived from the two *C. affinis* males were undigested by *SspI*, while the RFLP profile obtained with *RsaI* revealed the presence of “*Ca. Phytoplasma prunorum*” (Fig. 2).

One of the hawthorn samples tested positive for “*Ca. Phytoplasma mali*” and two for “*Ca. Phytoplasma pyri*”.

Partial 16S rRNA gene sequences (800bp) obtained from two samples per psyllid species, per phytoplasma type confirmed the RFLP analyses. In particular, the sequences of samples ascribed to “*Ca. Phytoplasma mali*” and “*Ca. Phytoplasma prunorum*” by means of RFLP analyses showed less than 1% difference with the sequences of the respective AP group members available in the GenBank databases. In contrast, all sequences of the psyllid and hawthorn samples ascribed to “*Ca. Phytoplasma pyri*” by RFLP analyses (from AM404169 to AM404176) showed an average of 98% identity with the “*Ca. Phytoplasma pyri*” sequences available in the GenBank databases and seem to represent a new subtype (Fig. 3).

Discussion

The study of the hawthorn psyllid fauna of northwestern Italy allowed us to ascertain the presence of two predominant species, the Holopalaearctic *C. melanoneura* and the Eurosiberian *C. peregrina*, both already known hawthorn feeders (Conci et al., 1992; Ossiannilsson, 1992; Lauterer, 1999). The third species found, *C. affinis*, is a Eurocaucasian species known from most European countries as oligophagous on *Crataegus* spp., predominantly *Cr. monogyna*, chiefly on free-growing shrubs and in woodland ecotones and shrubberies; it almost invariably occurs with the much more abundant *C. melanoneura* (Lauterer, 1999). The difficulty of morphologically discriminating females of the two species constrained our description of population dynamics to the *C. melanoneura*-*C. affinis* complex, but some interesting information on the two species concerning the phytoplasma infections were recorded. On the contrary the presence of *C. crataegi*, another hawthorn-specialist species, is negligible, comparing with the other three psyllids.

The molecular analyses performed on insect and hawthorn samples gave new information on the relationships between phytoplasmas, hawthorn, and psyllids.

First of all, all four psyllid species showed to be able to harbour phytoplasmas of the AP-group, although the transmission ability has been proved only with *C. melanoneura* and “*Ca. Phytoplasma mali*” (Tedeschi and Alma, 2004). The estimated proportion of positive *C. melanoneura* specimens was similar to that recorded from specimens collected on apple trees (3.17-4.34% vs 2.9-3.6%) (Tedeschi et al., 2003), while lower frequencies were found for *C. peregrina*, suggesting a different ability to acquiring the AP-group phytoplasmas. Another interesting data was obtained by RFLP analyses that demonstrated the presence in the insects of not only “*Ca. Phytoplasma mali*” but also of the other phytoplasmas belonging to the same taxonomic group. Almost 30% of the *C. melanoneura* samples subjected to RFLP analysis with *SspI* and *RsaI* tested positive for “*Ca. Phytoplasma pyri*” while in *C. peregrina* the percentage of “*Ca. Phytoplasma pyri*”-positive samples was even higher (68% in 2005). Some *C. peregrina* were also positive for “*Ca. Phytoplasma prunorum*”. These results are supported also by the detection of “*Ca. Phytoplasma mali*” and “*Ca. Phytoplasma pyri*” in *Cr. monogyna* plants that now can be considered as a new source of inoculum for those diseases.

The co-presence in the investigated area of apple and hawthorn plants make us suppose a possible shift of *C. melanoneura* between the two hosts and this is the possible explanation of the infection of *Cr. monogyna* by “*Ca. Phytoplasma mali*”. On the contrary, the absence of pear and stone fruit orchards in the region make old abandoned fruit trees and those in family gardens the only possible original infection source of “*Ca. Phytoplasma pyri*” and “*Ca. Phytoplasma prunorum*”.

C. melanoneura collected on *Cr. monogyna* was biologically similar to that collected on apple trees and it colonizes the two hosts in the same periods (Tedeschi et al., 2002). Also on *Cr. monogyna* the overwintered adults have an important role because of their prolonged residence and their greater abundance than newly emerged adults. In fact, the new generation is larger than the overwintering one, which loses many individuals to estivation, and hibernation; however, it appears smaller because those individuals rapidly move to alternative hosts after emerging (Tedeschi et al, 2002).

C. peregrina, that overwinters as eggs, emerged in our region at the end of April, almost simultaneously with the new generation of *C. melanoneura*, but the two species are easily distinguishable, because of the colouring. After the population peaked at the beginning of June, densities rapidly decreased. This is due to the migration to alternative host plants during the summer (Lauterer, 1999).

The temporal differences in seasonal colour changes confirmed Sutton's observations (1983) and was correlated with the development of gonads in both sexes. Sutton asserted that males become sexually mature and migrate to the inner hawthorn crowns about three weeks earlier than the females do, before mating and laying eggs; on the contrary mature individuals' dark coloration mimics the bark of the basal regions of branches, their preferred resting spot. Immature adults are green and live on hawthorn leaves.

At the moment no information are available on the seasonal abundance of phytoplasmas in hawthorn plants, but it is likely that the phytoplasma concentration is higher at the end of the summer as it happens in other rosaceous plants (Shaper and Seemüller, 1982; Jarausch et al., 1999). This should be taken into account in case the transmission activity of *C. peregrina* will be proved, considering the second peak occurring in the second half of September.

The present work opens new perspectives in the study of the epidemiology of fruit tree phytoplasmas. First of all transmission trials are now required to prove the ability of the four psyllid species to transmit to healthy plants. Moreover the ability of *C. peregrina*, *C. affinis* and *C. crataegi*, to feed, on plants different than *Cr. monogyna*, even occasionally, should also be investigated, to define the possible risk of phytoplasma spreading.

Moreover, since AP group phytoplasmas were detected in hawthorn samples, in-depth studies should be carried out on *Cr. monogyna* to better understand its role as a source of both the vectors and the phytoplasmas.

Finally the analysis of the partial 16S rRNA gene sequences confirmed the homology of the phytoplasmas detected in the psyllids with the AP and ESFY agents, while curious results were

obtained with samples ascribed to “*Ca. Phytoplasma pyri*”. The lower homology observed in this species, and the analysis of its phylogenetic relationship to other phytoplasmas, suggests the presence of a new phytoplasma subtype related to *Cr. monogyna* and its psyllid fauna or a divergent *Ca. Phytoplasma pyri* strain of the region. Further investigations are required to confirm these assumptions.

Acknowledgements

The research was funded by the “Regione Valle d’Aosta”. We are grateful to Dr Luca Bertignono of the Institute Agricole Régional, Reg. La Rochère 1/A, 1100 Aosta –Italy for his help in field surveys.

We thank Dr Maggie Sherriffs of the University of California for the English revision of the manuscript.

References

- Ahrens, U. & Seemüller, E. (1992). Detection of DNA of plant pathogenic mycoplasma-like organism by a polymerase chain reaction that amplifies a sequence of the 16S rRNA gene. *Phytopathology*, 82, 828-832.
- Alma, A., Navone, P., Visentin, C. Arzone A., & Bosco D. (2000). Rilevamenti di fitoplasmi di “Apple proliferation” in *Cacopsylla melanoneura* (Förster) (Homoptera Psyllidae). *Petria*, 10, 141-142.
- Altschul, S. F., Gish, W., Miller, W., Myers, E. W., & Lipman, D. J. (1990). Basic local alignment search tool. *Journal of Molecular Biology*, 215, 403-410.
- Carraro, L., Loi, N., Ermacora, & P. (2001). Transmission characteristic of the European stone fruit yellows phytoplasma and its vector *Cacopsylla pruni*. *European Journal of Plant Pathology*, 107, 695-700.

- Carraro, L., Loi, N., Ermacora, P., Gregoris, A., & Osler, R. (1998a). Transmission of pear decline by using naturally infected *Cacopsylla pyri*. *Acta Horticulture*, 472, 665-668.
- Carraro, L., Osler, R., Loi, N., Ermacora, P., & Refatti, E. (1998b). Transmission of European Stone Fruit Yellows phytoplasmas by *Cacopsylla pruni*. *Journal of Plant Pathology*, 80, 233-239.
- Castresana, J. (2000). Selection of conserved blocks from multiple alignments for their use in phylogenetic analysis. *Molecular Biology and Evolution*, 17, 540-552.
- Conci, C., Rapisarda C. & Tamanini L. (1992). Annotated catalogue of the Italian Psylloidea. First part (Insecta Homoptera). *Atti dell'Accademia Roveretana degli Agiati* 245, ser. VII, vol. II,B: 33-136.
- Davies, D. L., Guise, C. M., Clark, M. F., & Adams, A. N. (1992). Parry's disease of pears is similar to pear decline and is associated with micoplasma-like organisms transmitted by *Cacopsylla pyricola*. *Plant Pathology*, 41, 195-203.
- Frasinghelli, C., Delaiti, L., Grando, M. S., Forti, D., & Vindimian, M. E. (2000). *Cacopsylla costalis* (Flor, 1861), as a Vector of Apple Proliferation in Trentino. *Journal of Phytopathology*, 148, 425-431.
- Hodkinson, I. D., & White, I. M. (1979). Homoptera Psylloidea. Handbooks for the Identification of British Insects, Royal entomological Society of London, 2 (5), 1-98.
- Jarausch, W., Lansac, M., & Dosba, F. (1999). Seasonal colonization pattern of European stone fruit yellows phytoplasmas in different *Prunus* species detected by specific PCR. *Journal of Phytopathology*, 147, 47-54.
- Jarausch, B., Schwind, N., Jarausch, W., Krczal, G., Dickler, E., & Seemüller E. (2003). First report of *Cacopsylla picta* as a vector of apple proliferation phytoplasma in Germany. *Plant Disease*, 87, 101.
- Lal, K. B. (1934). The biology of Scottish Psyllidae. *Transactions of the Royal Society of London B*, 82, 363-385.

- Lauterer P. (1999). Results of the investigations on Hemiptera in Moravia, made by the Moravian museum (Psylloidea 2). *Acta Musei Moraviae (Scientiae biologicae), Brno, 84*, 71-151.
- Lemoine, J. (1991). Deperissement du poirier: role de *Psylla pyri* dans sa dissemination. *Arboriculture Fruitière, 442*, 28-32.
- Lorenz, K. H., Schneider, B., Ahrens, U., & Seemüller, E. (1995). Detection of the Apple Proliferation and Pear Decline Phytoplasmas by PCR amplification of ribosomal and non ribosomal DNA. *Phytopathology, 85*, 771-776.
- Marzachi, C., Veratti, F., & Bosco D. (1998). Direct PCR detection of phytoplasmas in experimentally infected insects. *Annals of Applied Biology, 133*, 45-54.
- Missonnier J. (1956) Note sur la biologie du psylle de l'aubépine (*Psylla peregrina* Foerster). *Annales des Épiphyties, 7*, 253-262.
- Ossiannilsson, F. (1992). The Psylloidea (Homoptera) of Fennoscandia and Denmark. Volume 26 *Fauna Entomologica Scandinava*. E.J. Brill, Leiden, The Netherlands.
- Shaper, U., & Seemüller, E. (1982). Condition of the phloem and the persistence of mycoplasma-like organisms associated with Apple proliferation and Pear decline. *Phytopathology 72*, 736-742.
- Schneider, B., Seemüller, E., Smart, C.D., & Kirkpatrick, B.C. (1995). Phylogenetic classification of plant pathogenic mycoplasma-like organism or phytoplasmas. In *Molecular and Diagnostic Procedures in Mycoplasmaology*, Vol I, pp. 369-380. Eds. Razin S., J.G. Tully. Academic Press, San Diego.
- Sutton, R.D. (1983). Seasonal color changes, sexual maturation and oviposition in *Psylla peregrina* (Homoptera: Psylloidea). *Ecological Entomology, 8*, 195-201.
- Sutton R.D. (1984). The effect of host plant flowering on the distribution and growth of hawthorn psyllids (Homoptera: Psylloidea). *Journal of Animal Ecology, 53*, 37-50.
- Swallow, W.H. (1985). Group testing for estimating infection rates and probabilities of disease transmission. *Phytopathology, 75*, 882-889.

- Tedeschi, R., & Alma, A. (2004) Transmission of apple proliferation phytoplasma by *Cacopsylla melanoneura* (Homoptera: Psyllidae). *Journal of Economical Entomology*, 97(1), 8-13.
- Tedeschi, R., Bosco, D., & Alma, A. (2002). Population dynamics of *Cacopsylla melanoneura* (Homoptera: Psyllidae), a vector of apple proliferation in northwestern Italy. *Journal of Economic Entomology*, 95(3), 544-551.
- Tedeschi, R., Visentin, C., Alma, A., & Bosco, D. (2003). Epidemiology of apple proliferation (AP) in northwestern Italy: evaluation of the frequency of AP-positive psyllids in naturally infected populations of *Cacopsylla melanoneura* (Homoptera Psyllidae). *Annals of Applied Biology*, 142, 285-290.
- Tedeschi, R., Ferrato, V., Rossi, J., & Alma, A. (2006). Possibile phytoplasma transovarial transmission in the psyllids *Cacopsylla melanoneura* and *Cacopsylla pruni*. *Plant Pathology*, 55, 18-24.
- Thompson, J.D., Gibson, T.J., Plewniak, F., Jeanmougin, F., & Higgins, D.G. (1997). The ClustalX windows interface: flexible strategies for multiple sequence alignment aided by quality analysis tools. *Nucleic Acids Research*, 24, 4876-4882.
- Tomasi, F., Branz, A., Grando, M.S., Forno, F., Forti, D., & Vindimian, M.E. (2000). Individuazione di fitoplasmi del gruppo AP nelle psille presenti nei frutteti. *Informatore fitopatologico*, 38, 51-54.
- Van de Peer, Y., & De Wachter, R. (1994). TREECON for Windows: a software package for the construction and drawing of evolutionary trees for the Microsoft Windows environment. *CABIOS*, 10, 569-570.

Figure legend

Figure 1. Counts of *Cacopsylla melanoneura* and *Cacopsylla peregrina* adults caught by means of yellow sticky traps and beat trays in the two investigated sites in 2004 (a) and 2005 (b).

Figure 2. Mean weekly temperature recorded throughout the experimental period in the years 2004 and 2005.

Figure 3. RFLP analysis with *SspI* (a) and *RsaI* (b) of PCR products from DNA extracted from: **a:** *Cacopsylla melanoneura* (1-3, 8-10), *Cacopsylla peregrina* (4-6, 11-13), *Cacopsylla affinis* (14 and 15), *Cacopsylla crataegi* (16 and 17), *Crataegus monogyna* (7, 18 and 19), AP control (20), PD control (21), ESFY control (22), 1-kb DNA ladder (Invitrogen, Carlsbad, CA)(23). **b:** *Cacopsylla melanoneura* (1-3), *Cacopsylla peregrina* (4-6, 11-13), *Cacopsylla affinis* (14 and 15), *Cacopsylla crataegi* (7 and 8), *Crataegus monogyna* (9 and 10), AP control (16), PD control (17), ESFY control (18), 100-bp ladder (Invitrogen) (19). (AP = Apple Proliferation, PD = Pear Decline, ESFY = European Stone Fruit Yellows).

Figure 4. Phylogenetic relationship of members of apple proliferation phytoplasma group determined by neighbour-joining algorithm of 16s rRNA gene sequences. Bootstrap values were determined from 1000 replicates. Bar represents 2% substitutions/site rate.

Table 1 Psyllid species caught on hawthorn plants by means of yellow sticky traps in 2003. Total number of adults per site.

Species	Sites			Proportion
	C 1	C 2	Tot	(%)
<i>C. melanoneura-C. affinis</i> complex	1859	1810	3669	70.24
<i>Cacopsylla peregrina</i>	512	1014	1526	29.22
<i>Cacopsylla crataegi</i>	12	8	20	0.38
<i>Cacopsylla pulchella</i>	0	2	2	0.04
<i>Cacopsylla pruni</i>	2	0	2	0.04
<i>Cacopsylla pyrisuga</i>	1	0	1	0.02
<i>Baeopelma foersteri</i>	0	1	1	0.02
<i>Psyllopsiis fraxini</i>	1	0	1	0.02
<i>Trioza rhamni</i>	0	1	1	0.02

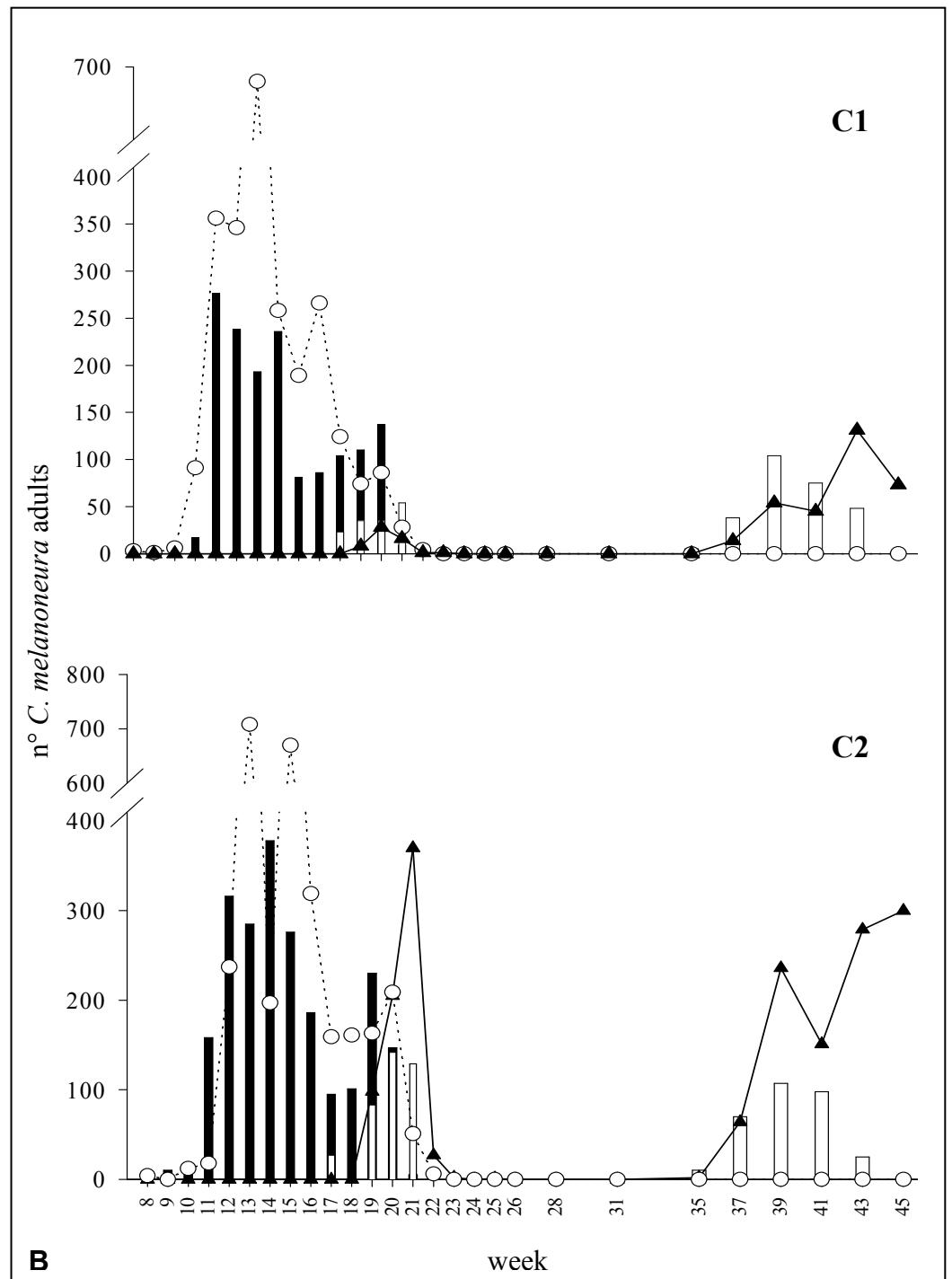
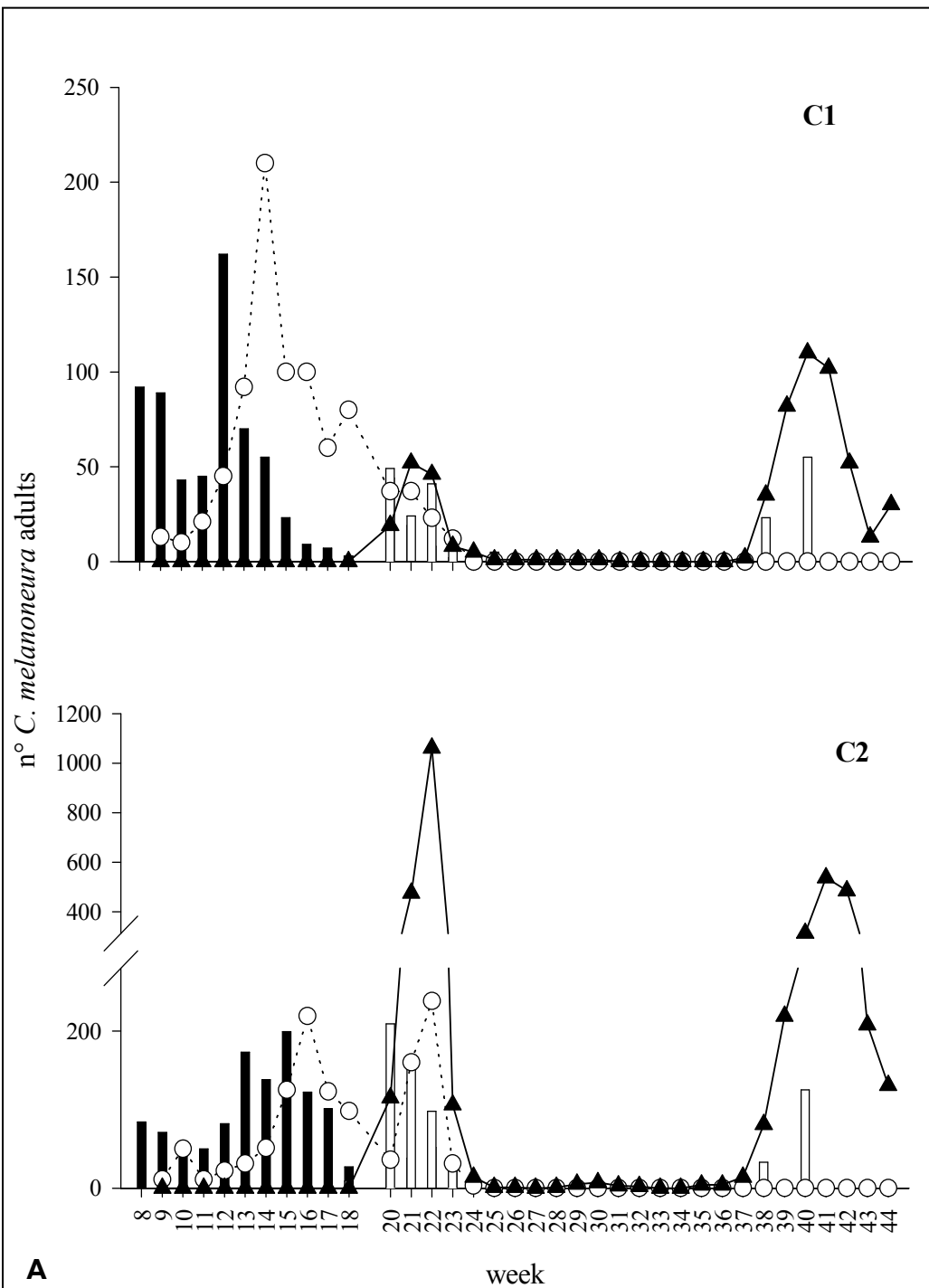
Table 2 Number of hawthorn psyllid positive samples in nested PCR with the AP-group (16Sr-X) specific primers fO1/rO1 and estimated proportion (p^{\wedge}) of infected insects.

Species	2004		2005	
	PCR positive	p^{\wedge}	PCR positive	p^{\wedge}
<i>C. melanoneura</i> - <i>C. affinis</i> complex	106/533	4.34%	59/396	3.17%
<i>C. peregrina</i>	25/246	2.12%	23/328	1.44%
<i>C. affinis</i>	-	-	2/50*	4.00%**
<i>C. crataegi</i>	1/8	2.63%	1/5	4.36%

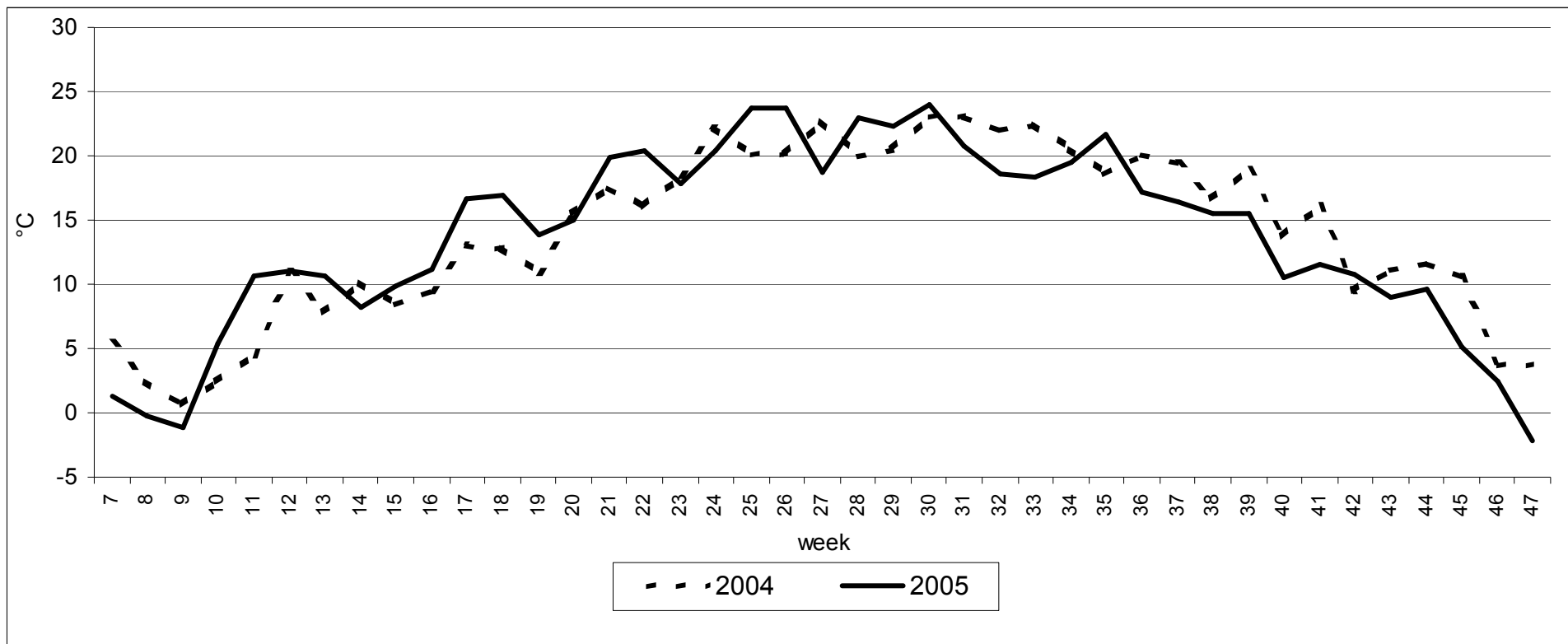
*individually tested,**real proportion

Table 3 Results of the RFLP analyses carried out with the endonucleases *SspI* and *RsaI* on *Cacopsylla melanoneura*, *C. affinis* complex, *Cacopsylla peregrina*, *Cacopsylla crataegi* and *Crataegus monogyna* samples. (16SrX-A = *Ca. Phytoplasma mali*, 16SrX-B = *Ca. Phytoplasma prunorum*, 16SrX-C = *Ca. Phytoplasma pyri*).

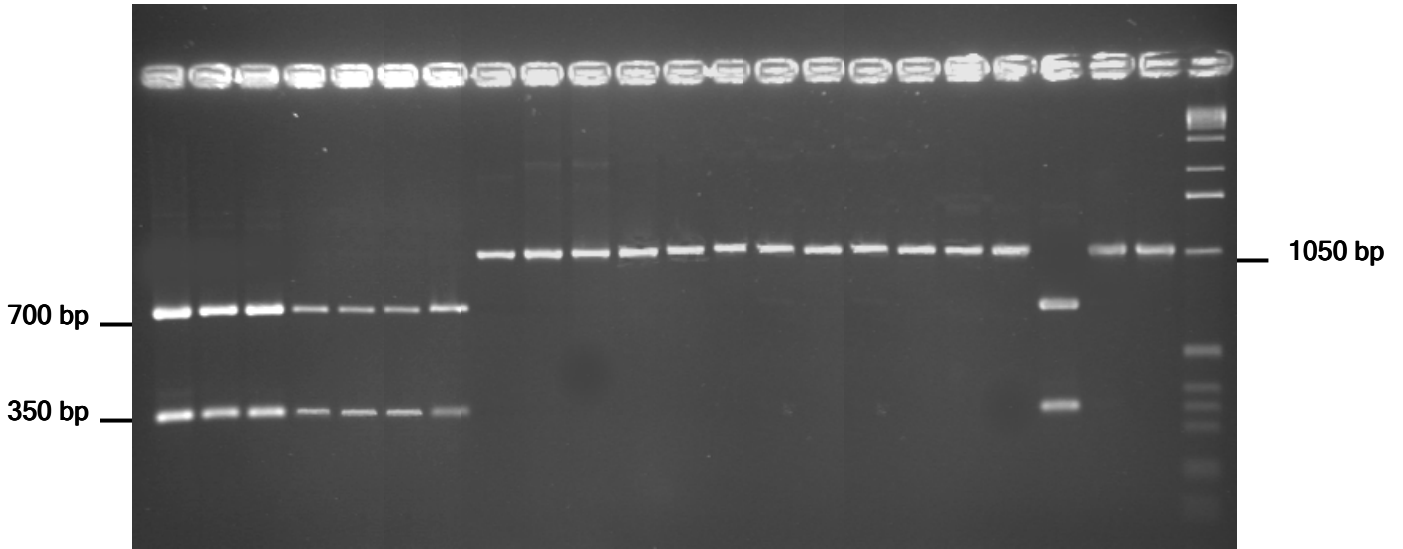
species	sample tested	2004			2005			
		16SrX-A	16SrX-B	16SrX-C	sample tested	16SrX-A	16SrX-B	16SrX-C
<i>C. melanoneura</i> – <i>C. affinis</i> complex	90	63	0	27	57	41	0	16
<i>C. peregrina</i>	13	7	1	5	22	5	2	15
<i>C. affinis</i>	-	-	-	-	2	0	2	0
<i>C. crataegi</i>	1	0	0	1	1	0	0	1
<i>Cr. monogyna</i>	2	1	0	1	1	0	0	1



Beat tray: ■ *C. melanoneura* □ *C. peregrina* Yellow traps:○..... *C. melanoneura* —▲— *C. peregrina*



A 1 2 3 4 5 6 7 8 9 10 11 12 13 14 15 16 17 18 19 20 21 22 23



B 1 2 3 4 5 6 7 8 9 10 11 12 13 14 15 16 17 18

