

AperTO - Archivio Istituzionale Open Access dell'Università di Torino

**The Diameter of Cortical Axons Depends Both on the Area of Origin and Target.**

**This is a pre print version of the following article:**

*Original Citation:*

*Availability:*

This version is available <http://hdl.handle.net/2318/151355> since

*Published version:*

DOI:10.1093/cercor/bht070

*Terms of use:*

Open Access

Anyone can freely access the full text of works made available as "Open Access". Works made available under a Creative Commons license can be used according to the terms and conditions of said license. Use of all other works requires consent of the right holder (author or publisher) if not exempted from copyright protection by the applicable law.

(Article begins on next page)



**THE DIAMETER OF CORTICAL AXONS DEPENDS BOTH ON  
AREA OF ORIGIN AND TARGET**

Journal:	<i>Cerebral Cortex</i>
Manuscript ID:	CerCor-2012-01312.R1
Manuscript Type:	Original Articles
Date Submitted by the Author:	n/a
Complete List of Authors:	Innocenti, Giorgio; Karolinska Institutet, Neuroscience Vercelli, Alessandro; University of Torino, Neuroscience Caminiti, Roberto; University of Rome "La Sapienza", Human Physiology and Pharmacology
Keywords:	cortical area, conduction velocity, internal capsule, nucleus caudatus, thalamus

1  
2  
3 THE DIAMETER OF CORTICAL AXONS DEPENDS BOTH ON AREA OF ORIGIN AND  
4  
5 TARGET  
6

7  
8 Giorgio M Innocenti<sup>1</sup>, Alessandro Vercelli<sup>2</sup> and Roberto Caminiti<sup>3</sup>  
9

- 10  
11 1. Department of Neuroscience, Karolinska Institutet, Stockholm, Sweden;  
12  
13 2. Neuroscience Institute of the Cavalieri Ottolenghi (NICO), Department of Neuroscience,  
14  
15 University of Turin, Turin, Italy;  
16  
17 3. Department of Physiology and Pharmacology, University of Rome Sapienza, Rome, Italy.  
18  
19

20  
21  
22 Corresponding author:  
23

24 Giorgio M Innocenti, Department of Neuroscience Karolinska Institutet, Retzius väg 8, S17177

25  
26  
27 Stockholm, Sweden  
28

29 Phone: +46852487862  
30

31 Mob: +46704681536  
32

33  
34 E mail: Giorgio.Innocenti@ki.se  
35  
36  
37  
38  
39

40 Running title: Diameter of cortical axons  
41  
42  
43  
44  
45  
46  
47  
48  
49  
50  
51  
52  
53  
54  
55  
56  
57  
58  
59  
60

1  
2  
3 ABSTRACT  
4

5 In primates, different cortical areas send axons of different diameter into comparable tracts,  
6 notably the corpus callosum (Tomasi et al. 2012). We now explored if an area also sends axons  
7 of different diameter to different targets. We find that the parietal area PEc sends thicker axons  
8 to area 4 and 6, thinner ones to the cingulate region (area 24). Areas 4 and 9, each sends axons of  
9 different diameter to the nucleus caudatus, to different levels of the internal capsule, and to  
10 thalamus. The internal capsule receives the thickest axon, followed by thalamus and nucleus  
11 caudatus. The two areas (4 and 9) differ in the diameter and length of axons to corresponding  
12 targets. We calculated how diameter determines conduction velocity of the axons and together  
13 with pathway length determines transmission delays between different brain sites. We propose  
14 that projections from and within cerebral cortex consist of a complex system of lines of  
15 communication with different geometrical and time computing properties.  
16  
17  
18  
19  
20  
21  
22  
23  
24  
25  
26  
27  
28  
29  
30  
31  
32  
33

34 **Key words:** conduction velocity, cortical area, internal capsule, nucleus caudatus, thalamus  
35  
36  
37  
38  
39  
40  
41  
42  
43  
44  
45  
46  
47  
48  
49  
50  
51  
52  
53  
54  
55  
56  
57  
58  
59  
60

1  
2  
3 Axons originating in different cortical areas of the macaque monkey differ in their diameter, with  
4  
5 thickest axons originating in primary motor and somatosensory areas and the thinnest ones in  
6  
7 prefrontal and temporal areas (Tomasi et al. 2012). Areal differences in axon diameter were  
8  
9 found for callosal axons and for cortico-thalamic axons, but not for intra-area axons. The  
10  
11 diameter of outgoing axons, therefore, appears to be a feature characterizing cortical areas, in  
12  
13 addition to the classical size and distribution of cell bodies, degree of myelination, topography of  
14  
15 connections, neuronal response properties, etc. Axon diameter determines conduction velocity  
16  
17 and together with axon length generates temporal delays whereby different brain sites  
18  
19 communicate. It was proposed that conduction delays may constrain processing speed and that  
20  
21 there may be a hierarchy of processing speeds among cortical areas, with premotor, motor and  
22  
23 primary somatosensory areas on the lead (Tomasi et al. 2012). Areas with, on average, thicker  
24  
25 axons also had an increased spectrum of axon diameters and of conduction delays. These  
26  
27 differences appear to be exaggerated in evolution in parallel with the increased volume of the  
28  
29 brain and might enrich cortical dynamics (Caminiti et al. 2009).  
30  
31  
32  
33  
34  
35

36 It was unclear if diameter relates only to the area of origin of the axons or also to their  
37  
38 sites of termination. This question was tackled in the present study by comparing the diameter of  
39  
40 axons originating in posterior parietal cortex and terminating in motor, premotor and cingulate  
41  
42 cortex. We also compared axons originating in area 4, and in prefrontal cortex area 9, and  
43  
44 terminating in the caudate, and thalamus or continuing into the internal capsule.  
45  
46  
47  
48  
49

## 50 **Materials and Methods**

51  
52  
53  
54  
55  
56  
57  
58  
59  
60

1  
2  
3 Two monkey brains injected with biotinylated dextran amine (BDA) in the dorsal part of area 4,  
4 presumably the proximal arm/trunk representation, were at our disposal (Tomasi et al. 2012); one  
5  
6 of them was also injected in prefrontal area 9. This allowed reducing the number of animals as  
7  
8 much as possible since in studies with primates the repetition of experiments is restricted by  
9  
10 ethical considerations and administrative rules; the projection from parietal cortex was studied in  
11  
12 a third animal. An additional monkey injected in area PEc was prepared for electron microscopy  
13  
14 (EM) and intracortical axons were measured in parietal cortex. The surgical methods were  
15  
16 reported in detail in Tomasi et al. (2012). Briefly, deeply anaesthetized animals received three to  
17  
18 five 0.3-0.5  $\mu$ l injections of BDA (Invitrogen, Carlsbad, CA) MW 10 000 (10% in 0.01 M  
19  
20 phosphate buffer) in area 4, 9 and PEc/PE border (area 5). The monkeys were males ranging  
21  
22 between 6 and 8 years of age and weighing between 6 and 10 kg.  
23  
24  
25  
26  
27  
28

29 For EM, one animal was perfused 5 minutes with heparinized buffered saline followed by  
30  
31 2 Lt of 3% paraformaldehyde (PAF) and 1% glutaraldehyde in 0.9% NaCl in 0.15 M Phosphate  
32  
33 Buffer (PB). The skull and the dura were opened and the head was stored in 3% PAF in 0.9%  
34  
35 NaCl in 0.15 M overnight. The following day, the corpus callosum was cut on the midline.  
36  
37 Parasagittal blocks were cut from each hemisphere, containing the injection site and the labeled  
38  
39 fibers. 80  $\mu$ m-thick sections were obtained at the vibratome and reacted for BDA according to  
40  
41 Wang et al. (2010). Selected sections were osmicated and flat embedded in Araldite, to be  
42  
43 sectioned for EM. Semithin sections were cut on the ultramicrotome with a glass knife, to outline  
44  
45 the area of interest; ultrathin sections (from silver to gold) were cut with a diamond knife,  
46  
47 counterstained with uranyl acetate and lead citrate, and observed with a JEM-1010 transmission  
48  
49 electron microscope (JEOL, Tokyo, Japan) equipped with a Mega-View-III digital camera and a  
50  
51 Soft-Imaging-System (SIS, Münster, Germany) for the computerized acquisition of the images,  
52  
53  
54  
55  
56  
57  
58  
59  
60

1  
2  
3 at the magnification of 10k or 20k, for measuring myelinated and unmyelinated fibers,  
4  
5 respectively. The diameter of BDA labeled axons identified in the gray matter near the injection  
6  
7 site was measured in four different specimens, using the software ImageJ (NIH, USA) by  
8  
9 drawing a line along the shortest axis of the axon profile. BDA-labeled axons were identified  
10  
11 under the EM by the greater electron density of the cytoplasm, except for mitochondria,  
12  
13 particularly in the vicinity of vesicular and other membranes.  
14  
15

16  
17 For light microscopy (LM) sections from brains cryoprotected in 30% (wt/vol) sucrose in  
18  
19 PBS were cut frozen at 34  $\mu\text{m}$  and reacted for BDA with alternating sections stained for cresyl  
20  
21 violet and the Gallyas method for myelin as in Tomasi et al. (2012).  
22  
23

24  
25 Axons originating in area PEc/PE were sampled and measured as in Tomasi et al. (2012).  
26  
27 The axons profiles at the upper or lower surface of the sections were approximated to circles  
28  
29 whose size was incremented in 0.09  $\mu\text{m}$  steps. Axons originating in areas 4 and 9 were sampled  
30  
31 and measured with the following strategy using the NeuroLucida software (MBF Biosciences,  
32  
33 Williston, VT). Since each monkey had received injections at different locations a preliminary  
34  
35 sketchy reconstruction of the pathway was performed at 345 x (2 cm=58  $\mu\text{m}$ ) magnification to  
36  
37 separate the different projections. Areas of interest were circumscribed and within these areas  
38  
39 80-119 axon segments traversing the section were drawn at 3448 x magnification (2 cm=5.8  $\mu\text{m}$ )  
40  
41 over their entire length i.e. between 5 and 70  $\mu\text{m}$  faithfully following the changes in diameter  
42  
43 that the axon undergoes in its trajectory. The Neuroexplorer software (MBF Biosciences,  
44  
45 Williston, VT) calculated the diameter of the axonal segment at the surface of the section as well  
46  
47 as the average diameter of the axonal segment. The two types of measurements are similar but  
48  
49 not identical. The average diameter can be affected by apparent thinning of the axon due to  
50  
51 incomplete visualization in the depth of the section. The diameter of the axon at the surface of  
52  
53  
54  
55  
56  
57  
58  
59  
60

1  
2  
3 the section more closely approximates the measurements performed with the circle and, as the  
4  
5 latter, is affected by whether the section fell by chance on a thin or on a varicose portion of the  
6  
7 axon. Eventually the latter measurement **at the surface of the section** was retained.  
8  
9

10 Significance of differences was tested with the Mann Whitney two-tailed U test.

11  
12 **Lengths of tracts were measured as curvilinear segments with one of the Neuroexplorer**  
13 **software options (MBF Biosciences, Williston, VT).**  
14  
15

16  
17 Correction for shrinkage. Shrinkage in this material consisted of two components. The  
18  
19 first component is due to the perfusion–fixation and was estimated by comparing the distance  
20  
21 between the sites of injection at the time of the stereotaxic measurements and on the sections in 4  
22  
23 animals. This component varied between 1.1 and 1.4 (mean 1.2). The second component is the  
24  
25 differential shrinkage between the BDA and the cresyl violet or myelin staining. This component  
26  
27 was negligible. Therefore we applied a 1.3 correction for shrinkage to the results on the  
28  
29 distribution of axon diameters and conduction velocities of axons originating in area 4 in order to  
30  
31 test if the shrinkage of the histological material might explain the differences between our  
32  
33 anatomical results and some electrophysiological data in the literature (Discussion).  
34  
35  
36  
37  
38  
39  
40

## 41 **Results**

### 42 43 44 45 ***Sites of Injection and Axonal Trajectories***

46  
47 The sites of injection are shown in Fig. 1. The core of the injections was between 500  $\mu\text{m}$  and 2  
48  
49 mm in diameter, restricted to the gray matter. The location was based on cytoarchitectonic  
50  
51 criteria and on comparisons with Paxinos et al. (2000) atlas. The axonal trajectories correspond  
52  
53 to those reported by Schmahammann and Pandya (2009) for similar injection locations  
54  
55  
56  
57  
58  
59  
60



1  
2  
3 (Discussion). They can also be appreciated in Figs 3 and 5 and therefore they will not be  
4  
5 described in detail.  
6  
7  
8  
9

### 10 *Electron Microscopic Analysis of Axon Diameters*

11  
12 The limited resolution of the LM could introduce biases in our assessment of axon diameters. For  
13 certain tracts, notably the corpus callosum, our estimates could be compared with EM data in the  
14 literature and this possible source of error could be avoided (discussed in Tomasi et al. 2012).  
15  
16 Unfortunately, a comparison of our measurements with EM data is not available for all tracts and  
17  
18 it is not feasible to analyze all the corticofugal tracts of the monkey with combined tract-tracing  
19  
20 and EM techniques. In this study one monkey was injected with BDA in the PEc subdivision of  
21  
22 area 5, and the diameter of the labeled local intra-cortical axons was measured in EM  
23  
24 photomicrographs. The choice was dictated by two considerations. The first is that the local  
25  
26 intra-cortical axons are likely to be the thinnest since many of them span much shorter distances  
27  
28 than the other corticofugal axons. The second is that the diameter of local intra-cortical axons  
29  
30 was found to be surprisingly similar in the five areas (9, 9/46, 6, 6-F4 and 4) where they were  
31  
32 studied in three different animals (Tomasi et al. 2012). If a comparable spectrum of axon  
33  
34 diameters were to be found in the new experiment, it could confirm that i) the LM analysis is not  
35  
36 seriously biased by missing small axons and that ii) the intracortical axons are indeed of similar  
37  
38 diameter across different cortical areas. Examples of BDA-labeled myelinated and unmyelinated  
39  
40 axons are shown in Fig. 2. Sixty-six myelinated axons were measured. Their mean diameter was  
41  
42  $0.76 \mu\text{m}$  ( $\pm 0.29$ , sd; median 0.71), of which the axoplasm was  $0.53 \mu\text{m}$  ( $\pm 0.24$ , sd; median  
43  
44 0.49). The axoplasm/axon ratio was, as expected, almost exactly 0.7. Seventy-five unmyelinated  
45  
46 axons were measured and their mean diameter was  $0.44 \mu\text{m}$  ( $\pm 0.16$ , sd; median 0.4; marginally  
47  
48  
49  
50  
51  
52  
53  
54  
55  
56  
57  
58  
59  
60

1  
2  
3 smaller,  $P < 0.05$ , than the axoplasm of the myelinated-axons). Since BDA appears not to diffuse  
4 into the myelin sheath, the comparison between EM and LM data was restricted to the axoplasm.  
5  
6 The EM values we found for the axoplasm of BDA labeled axons falls within the range of  
7  
8 intracortical axon diameters previously measured with LM (0.48-0.66  $\mu\text{m}$ ; Tomasi et al. 2012)  
9  
10 and it is nearly identical to the axon diameters found in the same study (0.48-0.51  $\mu\text{m}$ ) in areas 9,  
11  
12 9/46, 6 and 6-F4 while those from area 4 were slightly thicker (0.54, 0.66  $\mu\text{m}$ ).  
13  
14  
15  
16  
17  
18  
19

### 20 *Cortico-cortical Projections from Area PEc*

21  
22 The cortico-cortical axons originating in area PEc (Fig. 3) course in the superior longitudinal  
23 fasciculus (SLF; subdivision SLF I of Schmahmann and Pandya, 2009). They terminated at  
24 three separate locations in areas 4, 24 and 6. In area 4, the axons ended in its caudal part, in three  
25 columns with the densest terminals in superficial layers, particularly in layer I. The projection is  
26 reciprocal since, in spite of the fact that the BDA used is transported overwhelmingly  
27 anterogradely, a few retrograde labeled neurons were seen in layer 3. In area 6, the axons ended  
28 on the convexity of the superior frontal gyrus in the dorso-caudal division of premotor cortex,  
29 cytoarchitectonically corresponding to area F2 of Belmalih et al. (2007). At the same  
30 rostrocaudal levels axons also terminated at the fundus and on the dorsal bank of the cingulate  
31 sulcus. This site of termination is cytoarchitectonically different from the more dorsal area 6m of  
32 Paxinos et al. (2000) (F3, according to Belmalih et al. 2007). The difference is the disappearance  
33 of large pyramids in layer 5, replaced by a band of medium size pyramids in layers 3 and 5  
34 which therefore cannot be differentiated, also due to the absence of layer 4. This area of  
35 termination is characterized by a superficial band of tangentially coursing, myelinated axons  
36 which acquire a deeper location and lose their identity in the more dorsal cortex. The  
37  
38  
39  
40  
41  
42  
43  
44  
45  
46  
47  
48  
49  
50  
51  
52  
53  
54  
55  
56  
57  
58  
59  
60

1  
2  
3 **termination** corresponds to a subdivision of area 24 in the proximity to the fundus of the sulcus  
4  
5 but it extends more dorsally ~~than what could be expected from the published boundaries of this~~  
6  
7 ~~area~~ and might reach area 6/32 according to Paxinos et al. (2000). At roughly corresponding  
8  
9 locations Picard and Strick (1996) described cingulate motor areas, notably CMAd. ~~It will be~~  
10  
11 ~~referred to as area 24 in the rest of this paper.~~

12  
13  
14  
15 Axons were measured in the SLF I before they distribute to their sites of termination and  
16  
17 then at their entrance into the gray matter (Table 1 and Figs 3 and 4). Axons in the SLF were  
18  
19 1.03  $\mu\text{m}$  on average (median 0.8). Those to areas 4 and 6 had similar diameters (means 0.95 and  
20  
21 0.96  $\mu\text{m}$ ; medians 0.8 and 0.87, respectively) while those to area 24 were thinner (mean 0.77  $\mu\text{m}$ ,  
22  
23 median 0.73). Mann Whitney U test reported highly significant differences ( $P < 0.001$ ) between  
24  
25 the axons to area 6 and those to area 24, marginally not significant differences ( $P = < 0.05$ ) for the  
26  
27 other comparisons.

28  
29  
30  
31 The axons labeled by the BDA injection in area PEc were a subpopulation of the myelin-  
32  
33 stained SLF axons. **Profiles of cross-sectioned myelinated axons were sampled in SLF (10921;**  
34  
35 **preliminary work for another study).** Their average near-neighbor distance of myelinated axons  
36  
37 ~~in SLF~~ was only 6.3  $\mu\text{m}$  but 33  $\mu\text{m}$  for the BDA labeled axons suggesting that only one in **five**  
38  
39 axons was BDA labeled. Myelinated axons (~~10921 axons were measured as preliminary work for~~  
40  
41 ~~another study~~) were also significantly thicker (1.3  $\mu\text{m}$  on average) than the BDA labeled axons.  
42  
43 This is not surprising since at the locations measured SLF I contain also axons originating in area  
44  
45 4 and elsewhere (see Schmahmann and Pandya, 2009).  
46  
47  
48  
49  
50  
51  
52

### 53 *Descending Projections from Areas 4 and 9*

54  
55  
56  
57  
58  
59  
60

1  
2  
3 Axons were sampled at four locations: i) at their entrance into the dorsal aspect of the caudate,  
4  
5 ii) in the proximal part of the internal capsule, dorsal to the entrance into the thalamus, iii) at  
6  
7 entrance into the thalamus, in proximity to their principal thalamic nuclei, i.e. VL and MD,  
8  
9 where a few retrogradely labeled neurons were also seen, and iv) in the distal part of the internal  
10  
11 capsule. This location corresponded to the entrance into the cerebral peduncle for the axons from  
12  
13 area 4; the axons from area 9 were sampled more dorsally just ventral to the thalamus while  
14  
15 coursing towards the *zona incerta*, since the axons reaching the cerebral peduncle were few and  
16  
17 difficult to separate from those labeled by the more caudal injection in area 4. In addition, in one  
18  
19 experiment, the main tract **streaming from the injection site** was sampled, ~~i.e. the axons dorsal to~~  
20  
21 the separation of axons **directed** to the corpus callosum, ~~to the internal capsule and to the caudate~~  
22  
23 (Fig. 5).  
24  
25  
26  
27  
28

29 To test the consistency of measurements across studies we re-sampled axons to the  
30  
31 proximal internal capsule and the results (Table 2 and Fig. 6) well correspond to those of earlier  
32  
33 measurements (Tomasi et al. 2012). The mean value of axon diameters from area 4 to the  
34  
35 proximal internal capsule is 0.74 and 0.91  $\mu\text{m}$  (medians 0.6 and 0.7  $\mu\text{m}$ ) in the two experiments  
36  
37 compared to the 0.68 and 1.01  $\mu\text{m}$  (medians 0.59 and 0.89  $\mu\text{m}$ ) of the previous estimates in the  
38  
39 same animals (Tomasi et al. 2012). For area 9 we found an average diameter of 0.59  $\mu\text{m}$  (median  
40  
41 0.50) vs. 0.51 (mean; 0.46 median) of the previous estimates. ~~Although the results are consistent,~~  
42  
43 ~~in spite of the different methodologies and sampling strategies used, in the two studies, the~~  
44  
45 ~~small differences might suggest the existence of local heterogeneities in the axonal composition~~  
46  
47 of the various projections, which further studies might document.  
48  
49  
50  
51  
52

53 The axons originating from motor cortex area 4 and directed to the thalamic nucleus VL  
54  
55 are significantly thicker than those originating from prefrontal cortex area 9 and directed to the  
56  
57  
58  
59  
60

1  
2  
3 nucleus MD (0.63 and 0.69, in two experiments vs. 0.44  $\mu\text{m}$ ;  $P < 0.001$ ). The difference in favor  
4  
5 of area 4 is even larger for axons directed to the distal internal capsule (1.4 and 1.37 vs. 0.54  $\mu\text{m}$ ;  
6  
7  $P < 0.001$ ). Differences in the projection from areas 4 and 9 to the caudate (0.4 and 0.49 vs. 0.36  
8  
9  $\mu\text{m}$ ) and to the proximal internal capsule (0.74 and 0.91 vs. 0.59  $\mu\text{m}$ ) were just below the  
10  
11 significance level ( $P < 0.05$ ) in one experiment, but were significant in the other.  
12  
13  
14

15 In conclusion, motor cortex area 4 sends the thickest axons towards the cerebral peduncle  
16  
17 (distal internal capsule) (1.4 and 1.37  $\mu\text{m}$  in the two experiments), thinnest axons to the caudate  
18  
19 nucleus (0.4 and 0.49  $\mu\text{m}$ ) while the thalamic nucleus VL receives axons between those two  
20  
21 (0.63 and 0.69  $\mu\text{m}$ ). These differences are statistically significant at the 0.05-0.001 level.  
22  
23  
24

25 The distribution of different diameter axons to different targets could be implemented in  
26  
27 two different ways i.e., collateralization of the axons or parallel axonal systems. ~~Figure 7~~  
28  
29 ~~illustrates what the two hypotheses predict.~~ Collateralization predicts that the axons within a tract  
30  
31 would become thinner in the proximal to distal direction while the parallel projection hypothesis  
32  
33 allows for thicker axons distally (Fig. 7). The results of the present measurements are clearly in  
34  
35 favor of the second possibility. **Indeed,** ~~This is further illustrated in Fig. 8 which shows that the~~  
36  
37 projection from area 4 (Fig. 8) contains progressively thicker axons in the proximal to distal  
38  
39 direction, while the contingent of thin axon progressively decreases, consistent with the  
40  
41 hypothesis that these axons have terminated at their proximal targets, caudate and thalamus, in  
42  
43 particular.  
44  
45  
46  
47  
48  
49

### 50 *Consequences for Conduction Velocities and Delays*

51  
52 From the estimated diameters we calculated the conduction velocities and from the length of the  
53  
54 pathways the approximate delay to the target (Table 3 and Fig. 9). Velocity (V) was computed as  
55  
56  
57  
58  
59  
60

1  
2  
3 previously publications (Tettoni et al. 1998; Caminiti et al. 2009; Tomasi et al. 2012) as  
4  
5  $V=(5.5/0.7)*\text{diameter}$ . As confirmed above the factor 0.7 is the average axoplasm-to-myelin  
6  
7 ratio and it corrects for the fact that BDA visualizes only the axoplasm, without percolating into  
8  
9 the myelin sheath.  
10  
11

12  
13 The median axon diameter from area PEc to area 4 being 0.8  $\mu\text{m}$  in diameter, it is  
14  
15 expected to conduct at approximately 6.3 m/s. The distance (D) from the injection to the site  
16  
17 where the diameters were sampled was measured as a single curvilinear segment with one of the  
18  
19 Neuroexplorer software options (MBF Biosciences, Williston, VT) and was found to be of  
20  
21 approximately 12 mm. The delay to target ( $T= D/V$ ) can be expected to **should** be in the order of  
22  
23 1.9 ms. The projection to area 24, being 0.73  $\mu\text{m}$  in diameter it is expected to conduct at 5.7 m/s  
24  
25 and the **over a** distance to the sites of axonal measurements being approximately of 20.2 mm  
26  
27 **generating** the delays to target is expected to be in the order of 3.5 ms. The median axon to area 6  
28  
29 being 0.87  $\mu\text{m}$  in diameter its conduction velocity 6.8 m/s and the path to target approximately  
30  
31 23 mm the delay to target can be expected to be 3.3 ms. Therefore it appears that the  
32  
33 information from area PEc should reach area 4 in advance of area 24 or 6.  
34  
35  
36  
37

38  
39 The conduction velocity from area 4 to VL was 3.9 and 5.5 m/s in CCT 2 and CCT 5,  
40  
41 respectively generating delays of 5 and 3.7 ms over conduction distances of 19.6 and 20.3 mm.  
42  
43 In contrast the conduction velocity from area 9 to MD was 3.1 m/s, generating delays of 8.3 ms.  
44  
45 These findings confirm ~~the previous estimates~~ that delays to their principal thalamic nuclei is  
46  
47 greater for prefrontal than motor projections (Tomasi et al. 2012). The estimated conduction  
48  
49 velocities to the caudate turned out to be the similar in all experiments (3.1 m/s). The estimated  
50  
51 conduction delays ranged between 3.4 and 4.3 ms.  
52  
53  
54  
55  
56  
57  
58  
59  
60

1  
2  
3 Finally considerable differences in the conduction velocities of axons to the distal internal  
4 capsule were found between axons originating in area 4 (7.9 and 9.5 m/s in the two experiments)  
5 vs. those originating in area 9 (3.5 m/s). It should be stressed that the conduction delays are  
6 rough estimates since axons de-fasciculate near their targets; ~~and therefore~~ more precise  
7 estimates ~~amenable to rigorous statistical evaluations~~ would require the serial reconstruction of  
8 individual axons to their sites of termination, which was impossible on the present material.  
9  
10  
11  
12  
13  
14  
15  
16  
17  
18  
19

## 20 Discussion

### 21 *Goals and Methodological Considerations*

22  
23  
24 In this study as in previous ones (Caminiti et al. 2009; Tomasi et al. 2012) we have chosen to  
25 undertake a light microscopic analysis of axonal projections originating in the cerebral cortex of  
26 the macaque monkey with focus on axon diameters and length of the projections. This work has  
27 three long-term goals. One is to explore cortical connectivity at the cellular resolution, when this  
28 is missing in the current database of brain structure. The second is to allow predictions on the  
29 conduction velocity and timing of interaction between the different structures connected to the  
30 cerebral cortex, which is relevant for the speed of information processing in the brain and for  
31 cortical dynamics (Roxin et al. 2005; Roberts and Robinson, 2008; Caminiti et al. 2009; Panzeri  
32 et al. 2010). The third is to allow translation from the structure of the monkey brain to that of the  
33 human and/or of other primates in view of applications to human misconnectivity syndromes and  
34 to the evolution of the primate brain (Caminiti et al. 2009; Caminiti et al. 2010). Comparisons of  
35 cellular monkey data to the human are timely since non-invasive imaging techniques are  
36  
37  
38  
39  
40  
41  
42  
43  
44  
45  
46  
47  
48  
49  
50  
51  
52  
53  
54  
55  
56  
57  
58  
59  
60

1  
2  
3 approaching the level of resolution required to analyze the axonal diameters in fiber tracts (e.g.  
4  
5 Barazany et al. 2009; Dyrby et al. 2012).  
6  
7

8 The **LM** analysis is bound to miss axons with diameters below the level of optical  
9 resolution i.e., 0.2-0.3  $\mu\text{m}$  but it appears to be the only approach possible, in view of the  
10 difficulty of performing systematic **EM** analyses of labeled axons in primates, particularly in  
11 humans, and in protected primate species. The error intrinsic to the **LM** analysis of the monkey  
12 material can be estimated by comparison with **EM** data in the literature when they exist (e.g. the  
13 corpus callosum; discussed in Tomasi et al. 2012). For reasons explained above (Results) we  
14 have chosen to **EM**-examine the diameter of intracortical axons in the parietal cortex. Our **EM**  
15 measurements were in the order of the previous **LM** estimates of intracortical axon diameters  
16 suggesting, as previously proposed (Tomasi et al. 2011), that “the structure of the cortical  
17 modules “columns” or “cortical output units” is invariant across areas because they perform  
18 similar computations” while the computations performed by long projections, and hence their  
19 structure, varies across areas.  
20  
21  
22  
23  
24  
25  
26  
27  
28  
29  
30  
31  
32  
33  
34  
35  
36  
37  
38

### 39 ***Comparison with Previous Studies***

40  
41 The cortico-cortical projections from area P<sub>Ec</sub> resemble those documented in case 3 of  
42 Schmahamann and Pandya (2009). They described projections to area 4 and 6 as well as a  
43 projection to the bottom of the cingulate sulcus in their sections 81-89. Unfortunately our  
44 material did not extend further and therefore we could not analyze the more rostral sites of  
45 termination. As mentioned (Results) our site of termination near the bottom of the cingulate  
46 sulcus has distinct cytoarchitectonic features from the more dorsal part of area 6, which are most  
47  
48  
49  
50  
51  
52  
53  
54  
55  
56  
57  
58  
59  
60



1  
2  
3 evident in layers 3 and 5, particularly in the pattern of myelination and it appears to correspond  
4  
5 to a subdivision of area 24.  
6  
7

8 Our injection sites in area 4 resemble the more lateral injection of case 1 of Kultas-  
9  
10 Ilinsky et al. (2003) and case 27 of Schmahmann and Pandya (2009) but are somewhat smaller  
11  
12 and more medial than the latter. The trajectory and location of the descending projection is  
13  
14 similar to that documented in the second study. In Kultas-Ilinsky et al. study (2003) the  
15  
16 projection was studied within the thalamic nuclei themselves and in ours at the entrance into the  
17  
18 thalamus, to measure axonal trunks rather than collaterals. The two studies agree that the  
19  
20 projection to the VL overwhelmingly consists of “small” axons, which in their case, distributed  
21  
22 small terminal boutons in the order of 0.21-0.6  $\mu\text{m}^2$  occasionally larger. In addition they found  
23  
24 large axons projecting to other thalamic nuclei. These axons might have contributed to our  
25  
26 previous sample of the projection to the VL (Tomasi et al. 2012) which consisted of slightly  
27  
28 thicker axons. ~~It should be mentioned that~~ Differences in the diameter of axons directed to  
29  
30 different thalamic nuclei might be a general feature of cortical projections, across systems and  
31  
32 species (e.g. Rockland 1994; Rouiller and Welker 2000; Cappe et al. 2007). The two types of  
33  
34 axons might originate from different layers, with thick axons mainly from layer 5 and thin ones  
35  
36 from layer 6 as discussed by Kultas-Ilinsky et al. (2003). The projection from area 4 included  
37  
38 large axons directed to the cerebral peduncle.  
39  
40  
41  
42  
43  
44  
45

46 Our conclusion that the projection from area 4 to the thalamus, to the caudate, and to the  
47  
48 cerebral peduncle consists mainly or exclusively of different axonal systems seems **consistent**  
49  
50 with ~~the data in~~ the literature which ~~instead~~ reports **higher** degree of collateralization for  
51  
52 descending projections in the brain stem (Lemon 2008). The projection to the thalamus  
53  
54 originates mainly from layer 6, while that to the cerebral peduncle and to the striatum is mainly  
55  
56  
57  
58  
59  
60

1  
2  
3 from layer 5, presumably, in primates, from different neuronal populations. This conclusion is  
4 tentative since our work cannot exclude the possibility that, as in the rat, a small population of  
5 small or medium size axons may send collaterals to multiple targets including the striatum,  
6 thalamus and to the subthalamic nucleus (Kita and Kita, 2012).  
7  
8  
9  
10  
11

12 Our injection in area 9 is more medially located than that of case 31 of Schmahmann  
13 and Pandya (2009) but the axonal trajectories are similar, i.e., to the dorsal aspect of the caudate,  
14 to the thalamic nucleus MD, and to the *zona incerta* where we sampled and measured axons.  
15  
16  
17  
18  
19

20 The finding that axons from area 4 projecting to the cerebral peduncle conduct much  
21 faster than those to the caudate is compatible with the electrophysiological evidence that axons to  
22 the pyramidal tract are faster than those to another compartment of the basal ganglia, the  
23 putamen (Bauswein et al. 1989). However the distribution of axons diameters in the cerebral  
24 peduncle (Fig. 8) did not provide the clear bimodal distribution of fast and slow axons, expected  
25 from the classical electrophysiological work on the pyramidal tract. Furthermore only 23 of 185  
26 axons measured in two experiments had diameters equal or greater than those compatible with  
27 velocities of 25 m/s, which is the cut off proposed by Humphrey and Corrie (1978) between the  
28 two populations. This is far from the 45% found by the same authors electrophysiologically with  
29 antidromic activation. Also, only one of our axons might have conducted faster than 35 m/s.  
30 Humphrey and Corrie (1978) attributed the discordance between their electrophysiological  
31 findings and the anatomical data available at the time to a strong electrophysiological sampling  
32 bias in favor of large cell bodies. The correction they proposed does indeed provide a better  
33 match between their electrophysiological data and our estimates of conduction velocities  
34 computed from diameters (Suppl Fig. 1) although our sample still misses axons which could  
35 conduct at above 35 m/s. Perhaps thicker axons originate from It is possible that we would have  
36  
37  
38  
39  
40  
41  
42  
43  
44  
45  
46  
47  
48  
49  
50  
51  
52  
53  
54  
55  
56  
57  
58  
59  
60

1  
2  
3 found larger axons had a portions of area 4 corresponding to the distal extremity representation  
4 been injected than in the proximal limb/trunk area we injected. Alternatively, the axons we  
5 measured might have shrunken, due to the fixation and histological processing. The correction  
6 for shrinkage we applied (Methods) returned slightly higher conduction velocities (Suppl Fig.2),  
7 but the results are still far from the electrophysiological data. The electrophysiological bias  
8 remains the most likely explanation of the discrepancy of data although in a previous paper  
9 (Tomasi et al. 2012) we found that conduction velocities and latencies predicted from the  
10 anatomical data (uncorrected for shrinkage) of interhemispheric connections of peristriate areas  
11 perfectly matched those found in an electrophysiological study of antidromic responses.  
12  
13  
14  
15  
16  
17  
18  
19  
20  
21  
22  
23  
24  
25  
26

### 27 *Consequences and determinants of axon diameters*

28  
29 Confirming and extending previous results (Caminiti et al. 2009; Tomasi et al. 2012) we found  
30 that axons of different caliber originate from different areas. The comparison of projections  
31 issued from area 4 and 9, chosen because they represent the extremes in the spectrum of  
32 outgoing-axon diameters, showed thinner axons from area 9 to the thalamus and internal capsule,  
33 in addition to the corpus callosum (Caminiti et al. 2009; Tomasi et al. 2012). Interestingly this  
34 appears not to apply to the projections to the caudate which receives similarly thin axons from  
35 the two areas nor to the intra-areal axons.  
36  
37  
38  
39  
40  
41  
42  
43  
44  
45

46 It remained to be clarified if an area also sends different diameter axons to different  
47 targets. The finding that parietal cortex projects thinner cortico-cortical axons to area 24 than to  
48 area 4 and 6 and the analysis of comparable projections in the two animals injected in the motor  
49 cortex area 4 indicate unequivocally that they do. Moreover it appears that axons with different  
50  
51  
52  
53  
54  
55  
56  
57  
58  
59  
60

1  
2  
3 diameter originate from different neuronal populations and proceed in parallel to the different  
4  
5 targets.  
6  
7

8 The relations between origin and termination of cortical axons and their diameters  
9  
10 highlight what appear to be new aspects of cortical organization. Together they suggest that the  
11  
12 overall picture which should arise from systematic studies of this kind is one of an extraordinary  
13  
14 complexity of axonal pathways operating at different conduction speed and generating different  
15  
16 conduction delays between brain sites. The complexity is exaggerated by the finding that each  
17  
18 projection consists of axons with different diameter, which therefore cause a spectrum of  
19  
20 activation delays at their targets. In the evolution of primates the diameter of axons increases less  
21  
22 than the distance between sites caused by brain enlargement and the spectrum of delays  
23  
24 increased as well with probable consequences for brain dynamics (Caminiti et al. 2009). An  
25  
26 additional question is whether feed-forward and feed-back projections between two areas use  
27  
28 similar spectra of axon diameters and conduction velocities as this appears to be the case for the  
29  
30 V1-V2 projections in the monkey (Girard et al., 2001).  
31  
32  
33  
34  
35

36 Which could be the consequences of the different conduction properties of cortical  
37  
38 axons? One might be the existence of a hierarchical organization of cortical areas in terms of  
39  
40 processing speed, the primacy going to the premotor, motor and somatosensory systems (Tomasi  
41  
42 et al. 2012). Unfortunately, at least three crucial pieces of information are missing. One is that  
43  
44 the axon diameters are roughly proportional to size of the parent somata (Tomasi et al. 2012),  
45  
46 which might have different activation threshold and this could compensate for the delays  
47  
48 generated by the axons. The second is that different diameter axons might contact different types  
49  
50 of neurons. For example, it was suggested that inhibitory influences between the hemispheres  
51  
52 might be carried by faster axons (Makarov et al. 2008) although the slower interhemispheric  
53  
54  
55  
56  
57  
58  
59  
60

1  
2  
3 input may be overwhelmingly excitatory (Makarov et al. 2008; Wunderle et al. 2012). The third  
4  
5 unknown concerns the conduction and synaptic properties of the intracortical, terminal portion of  
6  
7 the axons and the dynamics of the neuronal compartments they impinge. **This includes the**  
8  
9 **neuronal integration time, discussed by Budd and Kisvarday (2012).**  
10  
11

12  
13 A different set of questions, which will be only briefly mentioned here, relates to the  
14  
15 mechanisms which control axon diameter. In development, large axon diameters progressively  
16  
17 differentiate from an initially uniform or almost uniform distribution of small axons (Berbel et al.  
18  
19 1988; LaMantia and Rakic 1990). What causes this differentiation? Area-of-origin axonal  
20  
21 signatures appear to be a new aspect of cortical regionalization and an additional, possibly  
22  
23 genetically determined feature of cortical areas. The search for area specific genes has proven to  
24  
25 be a difficult task, particularly in primates (Yamamori et al. 2006; Molnar and Clowry 2012)  
26  
27 although promising perspectives emerge from complex layer- and area-specific gene clustering  
28  
29 analyses (Bernard et al. 2012) and from the study of the differences in the transcriptional activity  
30  
31 of certain genes (Konopka et al. 2012). Axonal differences related to the site of termination are  
32  
33 probably the expression of the genotypic identity of cortical projection neurons (e.g. Leone et al.  
34  
35 2008; Molyneaux et al. 2007; Shim et al. 2012), but also of possible retrograde signals from the  
36  
37 target. Beyond the likely genetic predisposition neural activity certainly plays a role as shown by  
38  
39 the catastrophic consequences of interfering with activity on the development of callosal  
40  
41 projections (**reviewed in** Innocenti 2007; **see also** Wang et al. 2007).  
42  
43  
44  
45  
46  
47

48  
49 The cellular mechanisms of axonal radial growth are incompletely known. Cytoskeletal  
50  
51 components the neurofilaments, in particular their heavy subunit, but also the intermediate  
52  
53 molecular weight subunit are involved in axonal maturation (Figuewicz et al. 1988) and radial  
54  
55 growth (Rao et al. 2003; Perrot et al. 2007 and references therein). It was long believed that all  
56  
57  
58  
59  
60

1  
2  
3 the axonal proteins are synthesized in the cell body but now unequivocal evidence of axonal  
4 translation has accumulated (Keonig et al. 1967; Giuditta et al. 1968; reviewed in Jung et al.  
5  
6 2012) although thus far evidence that the cytoskeletal proteins are also axonally synthesized is  
7  
8 lacking. A key element in the regulation of axonal caliber is the oligodendrocyte as shown by the  
9  
10 finding that axons fail to grow at sites where oligodendrocytes have been deleted by irradiation  
11  
12 (Colello et al. 1994). Some of the molecular mechanisms of the oligodendrocytic action on the  
13  
14 axon have been discovered recently (Lee et al. 2012). Oligodendrocyte proliferation is in turn  
15  
16 regulated by a host of factors, including the already mentioned neurofilament proteins proteins  
17  
18 (Fressinaud et al. 2012). Obviously the reciprocal interactions between axons, axonal  
19  
20 cytoskeleton, oligodendrocytes and neural activity remain elusive.  
21  
22  
23  
24  
25  
26

27 It would be important to know how the many complex cellular and molecular events  
28  
29 which determine axon diameters and the conduction delays are coordinated and regulated over  
30  
31 the whole brain, in development and possibly in adulthood. The counterpart of this question is  
32  
33 what the consequences of deregulation might be, a possible cause for misconnectivity  
34  
35 syndromes, including schizophrenia (Innocenti et al. 2003) resulting in psychiatric and/or  
36  
37 neurological symptoms.  
38  
39  
40  
41  
42

#### 43 ACKNOWLEDGMENTS

44 Supported by the European Union contract # 029023, Paul BROCA II (GMI) and the Compagnia  
45  
46 di San Paolo (AV, RC). We are grateful to Dr A Faccio for her excellent technical assistance  
47  
48 with EM sectioning.  
49  
50  
51  
52  
53  
54  
55  
56  
57  
58  
59  
60

## TABLES

	SLF	to area 4	to area 24	to area 6
Mean	1.03	0.95	0.77	0.96
Median	0.80	0.80	0.73	0.87
Mode	0.51	0.44	0.66	0.58
St Deviation	0.75	0.57	0.21	0.36
Sample Variance	0.56	0.33	0.05	0.13
Kurtosis	4.87	5.86	2.10	2.03
Skewness	2.09	2.04	1.40	1.21
Range	4.16	3.50	1.16	1.97
Minimum	0.29	0.29	0.44	0.44
Maximum	4.45	3.79	1.60	2.41
Count	273	207	203	164

**Table 1** Axons from area PEc projecting to other cortical areas.

**Motor Area 4 ( $\mu\text{m}$ )**

<i>CCT 2</i>	<i>to caudatus</i>	<i>to ic prox</i>	<i>to thalamus</i>	<i>to ic dist</i>
<b>Mean</b>	<b>0.40</b>	<b>0.74</b>	<b>0.63</b>	<b>1.40</b>
<b>Median</b>	<b>0.40</b>	<b>0.60</b>	<b>0.50</b>	<b>1.20</b>
Mode	0.40	0.40	0.40	1.60
St Deviation	0.19	0.54	0.33	0.85
Sample Variance	0.04	0.29	0.11	0.73
Kurtosis	15.55	6.75	2.43	0.70
Skewness	3.51	2.23	1.38	0.99
Range	1.20	3.20	1.80	3.50
Minimum	0.20	0.20	0.20	0.30
Maximum	1.40	3.40	2.00	3.80
Count	80	87	80	84

<i>CCT 5</i>	<i>main tract</i>	<i>to caudatus</i>	<i>to ic prox</i>	<i>to thalamus</i>	<i>to ic dist</i>
<b>Mean</b>	<b>0.79</b>	<b>0.49</b>	<b>0.91</b>	<b>0.69</b>	<b>1.37</b>
<b>Median</b>	<b>0.50</b>	<b>0.40</b>	<b>0.70</b>	<b>0.70</b>	<b>1.00</b>
Mode	0.30	0.40	0.40	0.40	1.20
St Deviation	0.67	0.25	0.66	0.32	1.10
Sample Variance	0.45	0.06	0.44	0.10	1.21
Kurtosis	4.18	5.67	15.90	0.87	5.86
Skewness	1.81	2.07	3.06	1.01	2.11
Range	3.70	1.50	5.00	1.50	6.60
Minimum	0.20	0.20	0.20	0.30	0.20
Maximum	3.90	1.70	5.20	1.80	6.80
Count	105	119	108	104	101

**Prefrontal Area 9  $\mu\text{m}$** 

<i>CCT 2</i>	<i>to caudatus</i>	<i>to ic prox</i>	<i>to thalamus</i>	<i>to ic dist</i>
<b>Mean</b>	<b>0.36</b>	<b>0.59</b>	<b>0.44</b>	<b>0.54</b>
<b>Median</b>	<b>0.40</b>	<b>0.50</b>	<b>0.40</b>	<b>0.45</b>
Mode	0.40	0.40	0.40	0.40
StDeviation	0.11	0.25	0.13	0.27
Sample Variance	0.01	0.06	0.02	0.07
Kurtosis	2.22	1.21	5.16	3.50
Skewness	0.62	1.14	1.95	1.64
Range	0.60	1.20	0.80	1.40
Minimum	0.10	0.30	0.20	0.20
Maximum	0.70	1.50	1.00	1.60
Count	80.00	103.00	100.00	100.00



1  
2  
3  
4  
5  
6  
7  
8  
9  
10  
11  
12  
13  
14  
15  
16  
17  
18  
19  
20  
21  
22  
23  
24  
25  
26  
27  
28  
29  
30  
31  
32  
33  
34  
35  
36  
37  
38  
39  
40  
41  
42  
43  
44  
45  
46  
47  
48  
49  
50  
51  
52  
53  
54  
55  
56  
57  
58  
59  
60

**Table 2** Size of axons originating from different injection sites and projecting to n. caudatus, internal capsule and to the thalamus.

For Peer Review

## Cortico-cortical axons

	diameter median $\mu\text{m}$	velocity m/s	path $\mu\text{m}$	delay $\mu\text{s}$
PEc to a 4	0.8	6.29	12041	1916
PEc to a 24	0.73	5.74	20201	3522
PEc to a 6	0.87	6.84	23001	3365

## Descending axons

	diameter median $\mu\text{m}$	velocity m/s	path $\mu\text{m}$	delay $\mu\text{s}$
CCT2 area 9 to MD	0.4	3.14	25934	8252
CCT2 area 4 to VL	0.5	3.93	19615	4993
CCT5 area 4 to VL	0.7	5.50	20306	3692
CCT2 area 9 to caudate	0.4	3.14	10586	3368
CCT2 area 4 to caudate	0.4	3.14	13475	4288
CCT5 area 4 to caudate	0.4	3.14	12293	3911
CCT2 area 9 to distal ic	0.45	3.54		
CCT2 area 4 to distal ic	1.2	9.43		
CCT5 area 4 to distal ic	1	7.86		

**Table 3** Conduction velocities path lengths and delays

## CAPTIONS TO FIGURES

**Figure 1.** Location and extent of BDA injection sites. Top: area PEc injection in experiment CCT1; middle: area 9 injection in CCT2; bottom: area 4 injection in CCT5. Each injection site is shown in outlines of the section and in photomicrographs of BDA-reacted material. Vertical segments mark the boundaries of area PEc close to the border with PE (top panel), 9L and 46 (and the 9/46 transition between the two, not labeled; middle panel) and area 4 (bottom panel); the outlines of the injection site are also projected on the CV stained section where the large pyramids of layer 5 can be appreciated and the injection track is marked by an arrow. Calibration bars are 1 mm in the section outlines and 500  $\mu\text{m}$  in the photomicrographs.

**Figure 2.** Photomicrographs of three myelinated (A, B, D) and one unmyelinated (C), BDA labeled axons. Calibration bars are 0.5  $\mu\text{m}$ .

**Figure 3.** Location of axon measurement sites (white polygons) in the SLF (bottom panel), and at the entrance of axons in area 4 (top left), areas 24 and 6 (top right) along the sketched axonal pathways in superposed outlines of sequential, non-consecutive, sections. Calibration bars are 2000  $\mu\text{m}$ .

**Figure 4.** Bar diagram of axon diameters at different locations long the parieto-frontal projection. S35 denotes the section where measurements were performed.

1  
2  
3 **Figure 5.** Location of axon measurement sites (white polygons) at different locations in the  
4 projection from area 4, along the sketched axonal pathways in superposed outlines of sequential,  
5 non-consecutive, sections (experiment CCT2). Insets show axonal labeling and selection of  
6 axonal segments at the entrance into caudate and traced axons in proximal internal capsule in  
7 experiment CCT5.  
8  
9  
10  
11  
12  
13  
14  
15  
16

17 **Figure 6.** Bar diagram of mean axon diameters (and standard deviations) at different locations in  
18 the projections from areas 4 and 9.  
19  
20  
21  
22  
23

24 **Figure 7.** The collateralization and parallel pathway hypotheses and their predictions.  
25  
26  
27  
28

29 **Figure 8.** Axon diameter distributions show a progressive proximo-distal shift towards thicker  
30 axons and disappearance of thinner axons compatible the parallel pathway hypothesis (Fig. 7).  
31  
32  
33  
34  
35

36 **Figure 9.** Schematic representation of diameters and estimated conduction delays for the  
37 connections studied, in this paper and in Tomasi et al. (2012). Thickness of arrow segments is  
38 proportional to median diameter; projections from area 4 are the means of two animals. Delays  
39 are calculated on conduction velocities and pathway lengths (Table 3). Delays computed in the  
40 same animal are shown in different colors i.e. CCT1: black, CCT2: red, CCT5: blue. **Filled boxes**  
41 **are areas studied in the present paper. Open boxes are from Tomasi et al (2012); ptem and mtem**  
42 **refer to posterior and middle temporal areas.**  
43  
44  
45  
46  
47  
48  
49  
50  
51  
52  
53  
54  
55  
56  
57  
58  
59  
60

## REFERENCES

- 1  
2  
3  
4  
5  
6 Barazany D, Basser PJ, Assaf Y. 2009. In vivo measurement of axon diameter distribution in the  
7  
8 corpus callosum of rat brain. *Brain*. 132:1210-1220.  
9
- 10 Bauswein E, Fromm C, Preuss A. 1989. Corticostriatal cells in comparison with pyramidal tract  
11  
12 neurons: contrasting properties in the behaving monkey. *Brain Res*. 493:198-203.  
13
- 14 Belmalih A, Borra E, Contini M, Gerbella M, Rozzi S, Luppino G. 2007. A multiarchitectonic  
15  
16 approach for the definition of functionally distinct areas and domains in the monkey frontal  
17  
18 lobe. *J Anat*. 211:199-211.  
19
- 20 Berbel P, Innocenti GM. 1988. The development of the corpus callosum in the cat. A light- and  
21  
22 electron-microscopic study. *J Comp Neurol*. 276:132-156.  
23
- 24 Bernard A, Lubbers LS, Keith Q, Tanis KQ, Luo R, Podtelezchnikov AA, Finney EM,  
25  
26 McWhorter MME, Serikawa K, Lemon T, Morgan R, Copeland C, Smith K, Cullen V,  
27  
28 Davis-Turak J, Lee C-K, Sunkin SM, Loboda AP, Levine DM, Stone DJ, Hawrylycz MJ,  
29  
30 Roberts CJ, Jones AR, Geschwind DH, Lein ES. 2012. Transcriptional Architecture of the  
31  
32 Primate Neocortex. *Neuron*. 73:1083-1099.  
33
- 34 Budd JML, Kisvarday ZF. 2012. Communication and wiring in the cortical connectome. *Front*  
35  
36 *Neuroanat*. 6:1-23.  
37
- 38 Caminiti R, Ghaziri H, Galuske R, Hof PR, Innocenti GM. 2009. Evolution amplified processing  
39  
40 with temporally dispersed, slow neuronal connectivity in primates. *Proc Natl Acad Sci*  
41  
42 *USA*. 106:19551-19556.  
43
- 44 Caminiti R, Chafee MV, Battaglia-Mayer A, Averbeck B, Crowe DA, Georgopoulos AP. 2010.  
45  
46 Understanding the parietal lobe syndrome from a neurophysiological and evolutionary  
47  
48 perspective. *Eur J Neurosci*. 31:2320-2340.  
49  
50  
51  
52  
53  
54  
55  
56  
57  
58  
59  
60

- 1  
2  
3  
4  
5  
6  
7  
8  
9  
10  
11  
12  
13  
14  
15  
16  
17  
18  
19  
20  
21  
22  
23  
24  
25  
26  
27  
28  
29  
30  
31  
32  
33  
34  
35  
36  
37  
38  
39  
40  
41  
42  
43  
44  
45  
46  
47  
48  
49  
50  
51  
52  
53  
54  
55  
56  
57  
58  
59  
60
- Cappe C, Morel A, Rouiller EM. 2007. Thalamocortical and the dual pattern of corticothalamic projections of the posterior parietal cortex in macaque monkeys. *Neuroscience*. 146:1371-1387.
- Colello RJ, Pott U, Schwab ME. 1994. The role of oligodendrocytes and myelin on axon maturation in the developing rat retinofugal pathway. *J Neurosci*. 1994. 14:2594-2605.
- Dyrby TB, Sogaard LV, Hall MG, Ptito M, Alexander DC. 2012. Contrast and stability of the axon diameter index from microstructure imaging with diffusion MRI. *Magn Reson Med*. 2012 Sep 28. [Epub ahead of print].
- Figlewicz DA, Gremo F, Innocenti GM. 1988. Differential expression of neurofilament subunits in the developing corpus callosum. *Dev Brain Res*. 42:181-189.
- Fressinaud C, Berges R, Eyer J. 2012. Axon cytoskeleton proteins specifically modulate oligodendrocyte growth and differentiation in vitro. *Neurochem Int*. 60:78–90.
- Girard P, Hupé JM, Bullier J. 2001. Feedforward and feedback connections between areas V1 and V2 of the monkey have similar rapid conduction velocities *J Neurophysiol*. 85:1328-1331.
- Giuditta A, Dettbarn WD, Brzin M. 1968. Protein synthesis in the isolated giant axon of the squid. *Proc Natl Acad Sci USA*. 59:1284–1287.
- Humphrey Dr, Corrie WS. 1978. Properties of pyramidal tract neuron system within a functionally defined subregion of primate motor cortex. *J Neurophysiol*. 41:216-243.
- Innocenti GM. 2007. Subcortical regulation of cortical development. Some effects of early cortical deprivation. In Von Hofsten C, Rosander K (Eds) *Progr Brain Res*. 164:23-37.
- Innocenti GM, Ansermet F, Parnas J. 2003. Schizophrenia, development and corpus callosum. *Molec Psychiat*. 8:261-274.

- 1  
2  
3 Jung H, Yoon BC, Holt CE. 2012. Axonal mRNA localization and local protein synthesis in  
4 nervous system assembly, maintenance and repair. *Nature Rev Neurosci.* 13:308-324.  
5  
6  
7  
8 Koenig E. 1967. Synthetic mechanisms in the axon. IV. In vitro incorporation of [3H]precursors  
9 into axonal protein and RNA. *J Neurochem.* 14:437-446.  
10  
11  
12 Konopka G, Friedrich T, Davis-Turak J, Winden K, Oldham MC, Gao F, Chen L, Wang GZ,  
13 Luo R, Preuss TM, Geschwind DH. 2012. Human-specific transcriptional networks in the  
14 brain. *Neuron.* 75:601-17.  
15  
16  
17  
18 Kultas-Ilinski K, Sivan-Loukianova E, Ilinski IA. 2003. Reevaluation of the Primary Motor  
19 Cortex Connections with the Thalamus in Primates. *J Comp Neurol.* 457:133-158.  
20  
21  
22  
23 LaMantia AS, Rakic P. 1990. Cytological and quantitative characteristics of four cerebral  
24 commissures in the rhesus monkey. *J Comp Neurol.* 291:520-537.  
25  
26  
27  
28 Lee Y, Morrison BM, Li Y, Lengacher S, Farah MH, Hoffman PN, Liu Y, Tsingalia A, Jin L,  
29 Zhang PW, Pellerin L, Magistretti PJ, Rothstein JD. 2012. Oligodendroglia metabolically  
30 support axons and contribute to neurodegeneration. *Nature.* 487:443-448.  
31  
32  
33  
34  
35  
36  
37 Lemon RN. 2008. Descending Pathways in Motor Control. *Annu Rev Neurosci.* 31:195-218.  
38  
39 Leone DP, Srinivasan K, Chen B, Alcamo E, McConnell SK. 2008. The determination of  
40 projection neuron identity in the developing cerebral cortex. *Curr Opin Neurobiol.* 18:28-  
41 35.  
42  
43  
44  
45  
46 Makarov VA, Schmidt K, Castellanos NP, Aguado L, Innocenti GM. 2008. Stimulus-dependent  
47 interactions between the visual areas 17 and 18 of the ferret. *Cereb Cortex,* 18:1951-1960.  
48  
49  
50 Molnár Z, Clowry G. 2012. Cerebral cortical development in rodents and primates M. A. In  
51 Hofman MA, Falk D (Eds.) *Progr Brain Res.* 195:45-70.  
52  
53  
54  
55  
56  
57  
58  
59  
60

- 1  
2  
3 Molyneaux BJ, Arlotta P, Menezes JR, Macklis JD. 2007. Neuronal subtype specification in the  
4 cerebral cortex. *Nat Rev Neurosci.* 8:427–437.  
5  
6  
7  
8 Panzeri S, Brunel N, Logothetis NK, Kayser C. 2010. Sensory neural codes using multiplexed  
9 temporal scales. *Trends Neurosci.* 33:111-120.  
10  
11  
12 Paxinos G, Huang X-F, Toga AW. 2000. *The Rhesus Monkey Brain.* London: Academic Press.  
13  
14  
15 Perrot R, Lonchamp P, Peterson AC, Eyer J. 2007. Axonal neurofilaments control multiple fiber  
16 properties but do not influence structure or spacing of nodes of Ranvier. *J Neurosci.*  
17 27:9573–9584.  
18  
19  
20  
21  
22 Picard N, Strick PL. 1996. Motor areas of the medial wall: a review of their location and  
23 functional activation. *Cerebr Cortex.* 6:342-353.  
24  
25  
26  
27 Rao MV, Campbell J, Yuan A, Kumar A, Gotow T, Uchiyama Y, Nixon RA. 2003. The  
28 neurofilament middle molecular mass subunit carboxyl-terminal tail domains is essential  
29 for the radial growth and cytoskeletal architecture of axons but not for regulating  
30 neurofilament transport rate. *J Cell Biol.* 163:1021-1031.  
31  
32  
33  
34  
35  
36 Roberts JA, Robinson PA. 2008. Modeling distributed axonal delays in mean-field brain  
37 dynamics. *Phys Rev E Stat Nonlin Soft Matter Phys.* 78:051901.  
38  
39  
40  
41 Rockland KS. 1994. Further evidence for two types of corticopulvinar neurons. *Neuroreport.*  
42 5:1865-1868.  
43  
44  
45  
46 Roxin A, Brunel N, Hansel D. 2005. Role of delays in shaping spatiotemporal dynamics of  
47 neuronal activity in large networks. *Phys Rev Lett.* 94:238103.  
48  
49  
50  
51 Rouiller EM, Welker E. 2000. A comparative analysis of the morphology of corticothalamic  
52 projections in mammals. *Brain Res Bull.* 53:727-734.  
53  
54  
55  
56  
57  
58  
59  
60



- 1  
2  
3 Shim S, Kwan KY, Li M, Lefebvre V, Sestan N. 2012. Cis-regulatory control of corticospinal  
4  
5 system development and evolution. *Nature*. 486:74-79.  
6  
7  
8 Schmahamann JD, Pandya DN. 2009. *Fiber pathways of the brain*. New York: Oxford UP.  
9  
10 Tettoni L, Georghita-Bachler F, Bressoud R, Welker E, Innocenti GM. 1998. Constant and  
11  
12 variable aspects of axonal phenotype in cerebral cortex. *Cereb Cortex*. 8:543-552.  
13  
14  
15 Tomasi S, Caminiti R, Innocenti GM. 2012. Areal differences in diameter and length of  
16  
17 corticofugal projections. *Cereb Cortex*. 22:1463-1472.  
18  
19  
20 Yamamori T, Rockland KS. 2006. Neocortical areas, layers, connections, and gene expression.  
21  
22 *Neurosci Res*. 55:11-27.  
23  
24  
25 Wang CL, Zhang L, Zhou Y, Zhou J, Yang XJ, Duan SM, Xiong ZQ, Ding YQ. 2007. Activity-  
26  
27 dependent development of callosal projections in the somatosensory cortex. *J Neurosci*.  
28  
29 27:11334-11342.  
30  
31  
32 Wang N, Warren S, May PJ. 2010. The macaque midbrain reticular formation sends side-specific  
33  
34 feedback to the superior colliculus. *Exp Brain Res*. 201:701-717.  
35  
36  
37 Wunderle T, Eriksson D, Schmidt KE. 2012. Multiplicative Mechanism of Lateral Interactions  
38  
39 Revealed by Controlling Interhemispheric Input. *Cereb Cortex*. 2012 Apr 2. [Epub ahead  
40  
41 of print].  
42  
43  
44  
45  
46  
47  
48  
49  
50  
51  
52  
53  
54  
55  
56  
57  
58  
59  
60

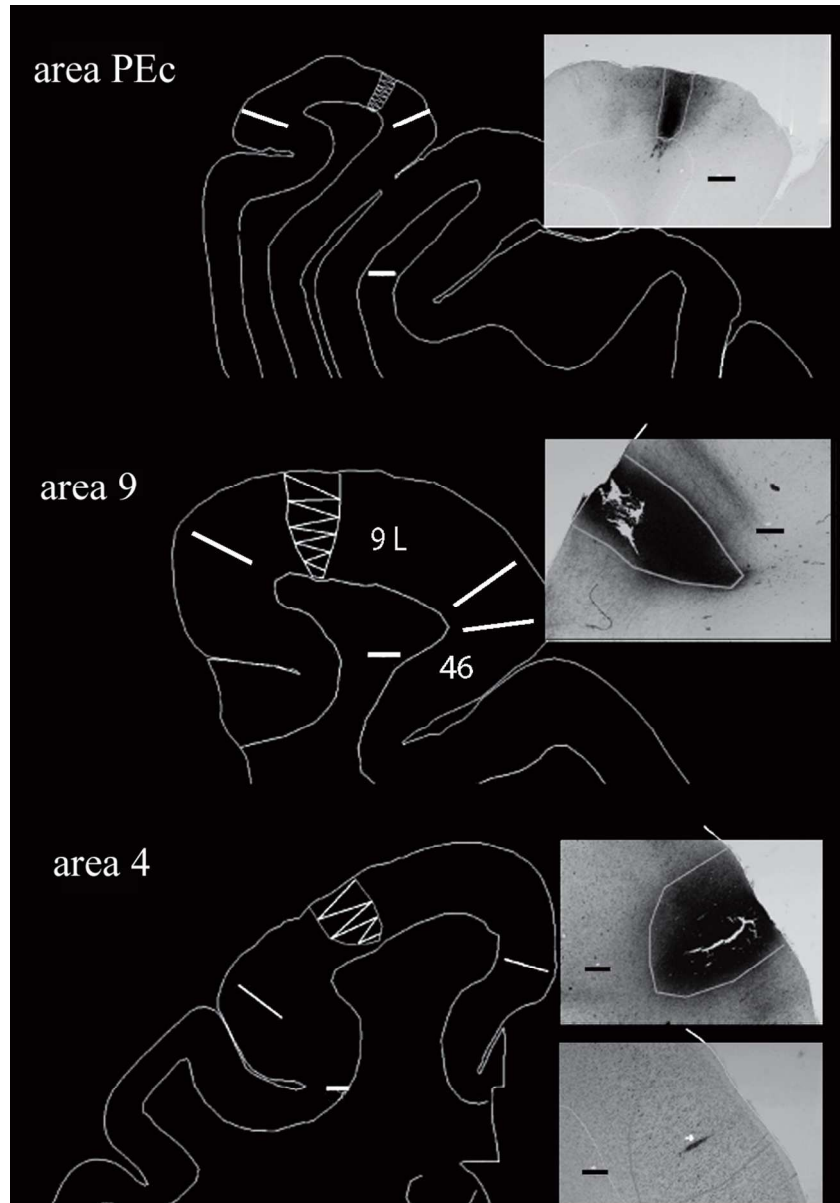


Figure 1. Location and extent of BDA injection sites. Top: area PEc injection in experiment CCT1; middle: area 9 injection in CCT2; bottom: area 4 injection in CCT5. Each injection site is shown in outlines of the section and in photomicrographs of BDA-reacted material. Vertical segments mark the boundaries of area PEc close to the border with PE (top panel), 9L and 46 (and the 9/46 transition between the two, not labeled; middle panel) and area 4 (bottom panel); the outlines of the injection site are also projected on the CV stained section where the large pyramids of layer 5 can be appreciated and the injection track is marked by an arrow. Calibration bars are 1 mm in the section outlines and 500  $\mu$ m in the photomicrographs.

87x125mm (300 x 300 DPI)

1  
2  
3  
4  
5  
6  
7  
8  
9  
10  
11  
12  
13  
14  
15  
16  
17  
18  
19  
20  
21  
22  
23  
24  
25  
26  
27  
28  
29  
30  
31  
32  
33  
34  
35  
36  
37  
38  
39  
40  
41  
42  
43  
44  
45  
46  
47  
48  
49  
50  
51  
52  
53  
54  
55  
56  
57  
58  
59  
60

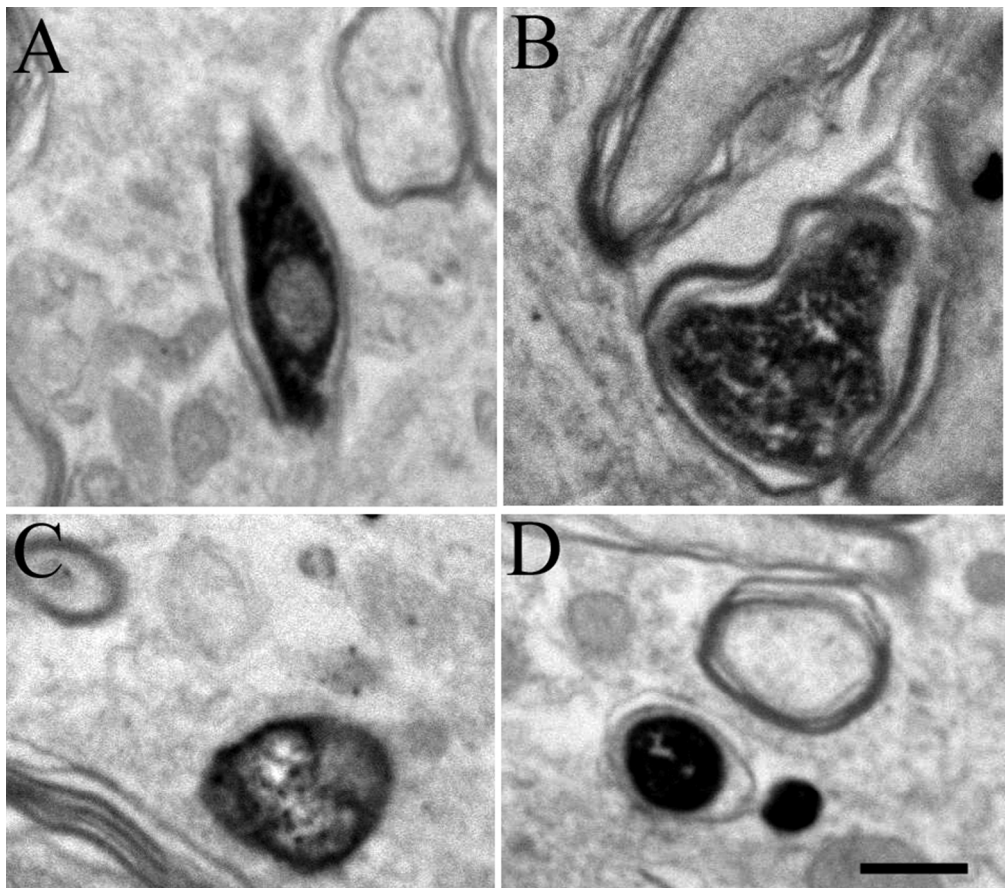


Figure 2. Photomicrographs of three myelinated (A, B, D) and one unmyelinated (C), BDA labeled axons. Calibration bars are 0.5  $\mu$ m. 80x70mm (300 x 300 DPI)

ew

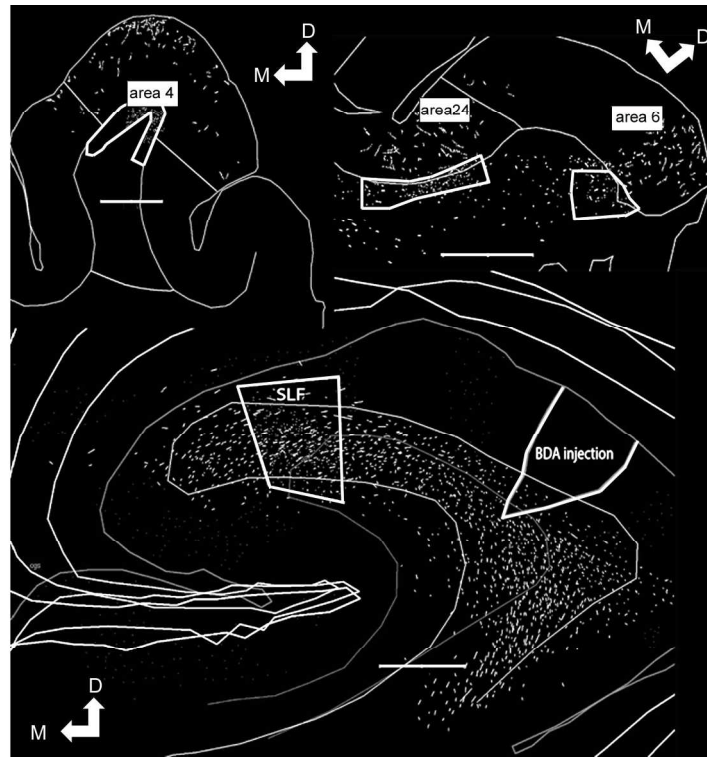


Figure 3. Location of axon measurement sites (white polygons) in the SLF (bottom panel), and at the entrance of axons in area 4 (top left), areas 24 and 6 (top right) along the sketched axonal pathways in superposed outlines of sequential, non-consecutive, sections. Calibration bars are 2000  $\mu\text{m}$ .  
180x134mm (300 x 300 DPI)

1  
2  
3  
4  
5  
6  
7  
8  
9  
10  
11  
12  
13  
14  
15  
16  
17  
18  
19  
20  
21  
22  
23  
24  
25  
26  
27  
28  
29  
30  
31  
32  
33  
34  
35  
36  
37  
38  
39  
40  
41  
42  
43  
44  
45  
46  
47  
48  
49  
50  
51  
52  
53  
54  
55  
56  
57  
58  
59  
60

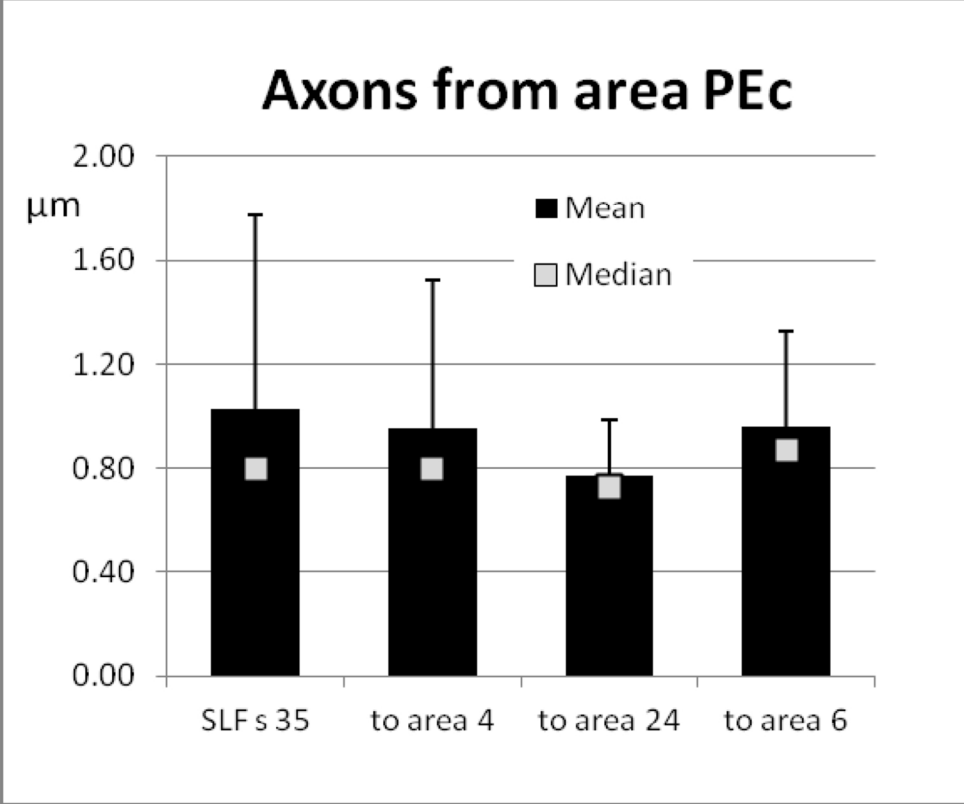


Figure 4. Bar diagram of axon diameters at different locations long the parieto-frontal projection. S35 denotes the section where measurements were performed.  
66x54mm (600 x 600 DPI)

view

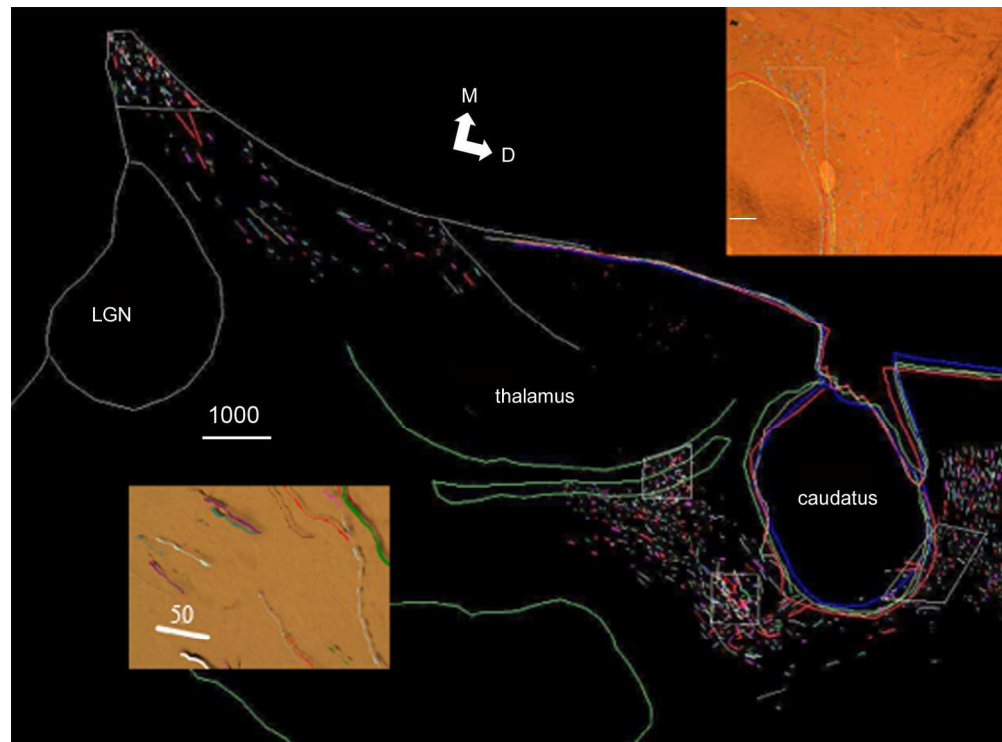


Figure 5. Location of axon measurement sites (white polygons) at different locations in the projection from area 4, along the sketched axonal pathways in superposed outlines of sequential, non-consecutive, sections (experiment CCT2). Insets show axonal labeling and selection of axonal segments at the entrance into caudate and traced axons in proximal internal capsule in experiment CCT5.  
179x132mm (300 x 300 DPI)

1  
2  
3  
4  
5  
6  
7  
8  
9  
10  
11  
12  
13  
14  
15  
16  
17  
18  
19  
20  
21  
22  
23  
24  
25  
26  
27  
28  
29  
30  
31  
32  
33  
34  
35  
36  
37  
38  
39  
40  
41  
42  
43  
44  
45  
46  
47  
48  
49  
50  
51  
52  
53  
54  
55  
56  
57  
58  
59  
60

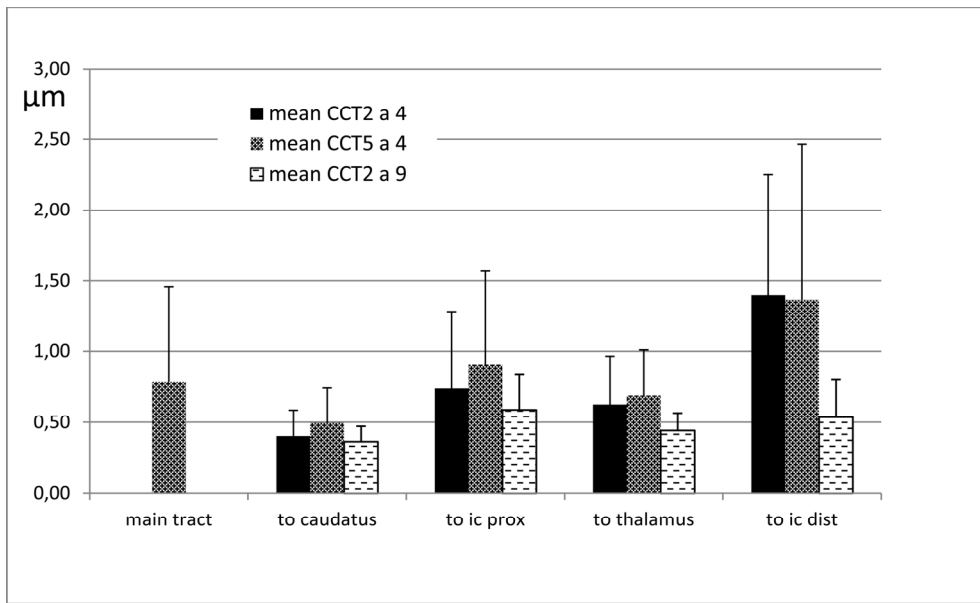
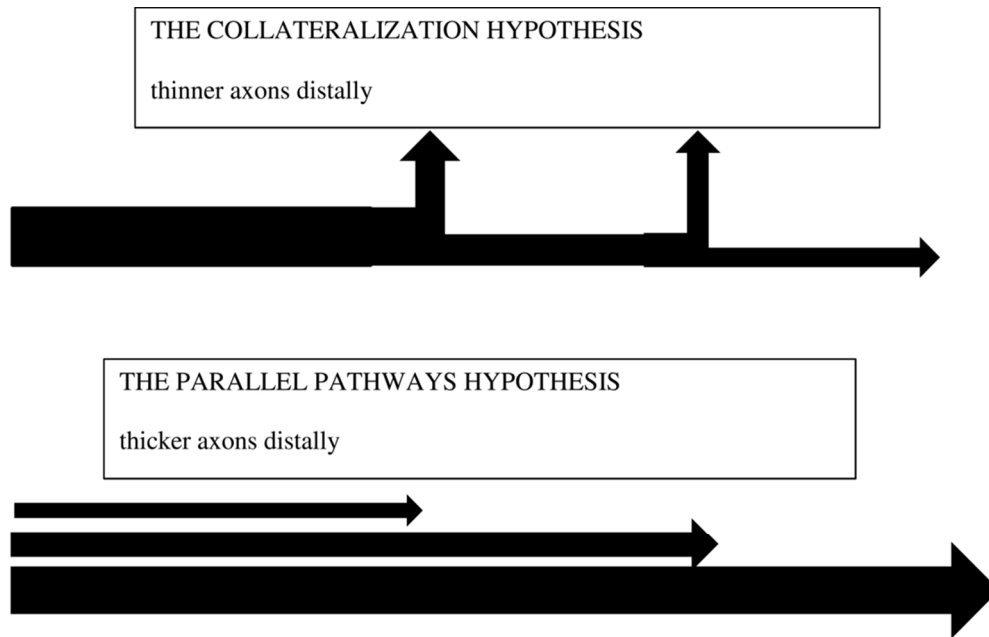


Figure 6. Bar diagram of mean axon diameters (and standard deviations) at different locations in the projections from areas 4 and 9. 97x59mm (600 x 600 DPI)

Review



28  
29  
30  
31  
32  
33  
34  
35  
36  
37  
38  
39  
40  
41  
42  
43  
44  
45  
46  
47  
48  
49  
50  
51  
52  
53  
54  
55  
56  
57  
58  
59  
60

Figure 7. The collateralization and parallel pathway hypotheses and their predictions.  
50x31mm (600 x 600 DPI)



1  
2  
3  
4  
5  
6  
7  
8  
9  
10  
11  
12  
13  
14  
15  
16  
17  
18  
19  
20  
21  
22  
23  
24  
25  
26  
27  
28  
29  
30  
31  
32  
33  
34  
35  
36  
37  
38  
39  
40  
41  
42  
43  
44  
45  
46  
47  
48  
49  
50  
51  
52  
53  
54  
55  
56  
57  
58  
59  
60

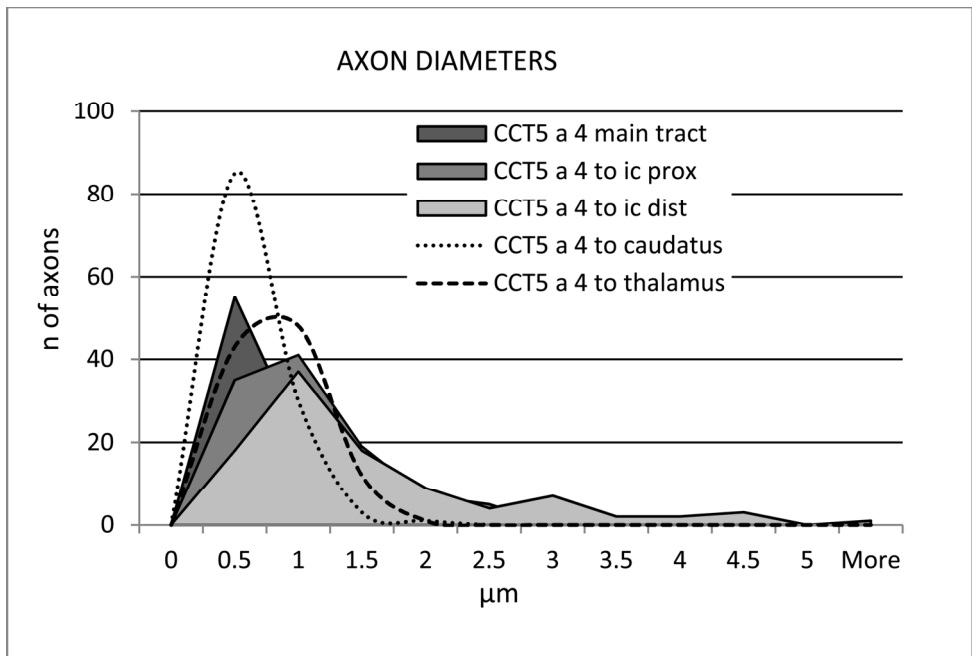
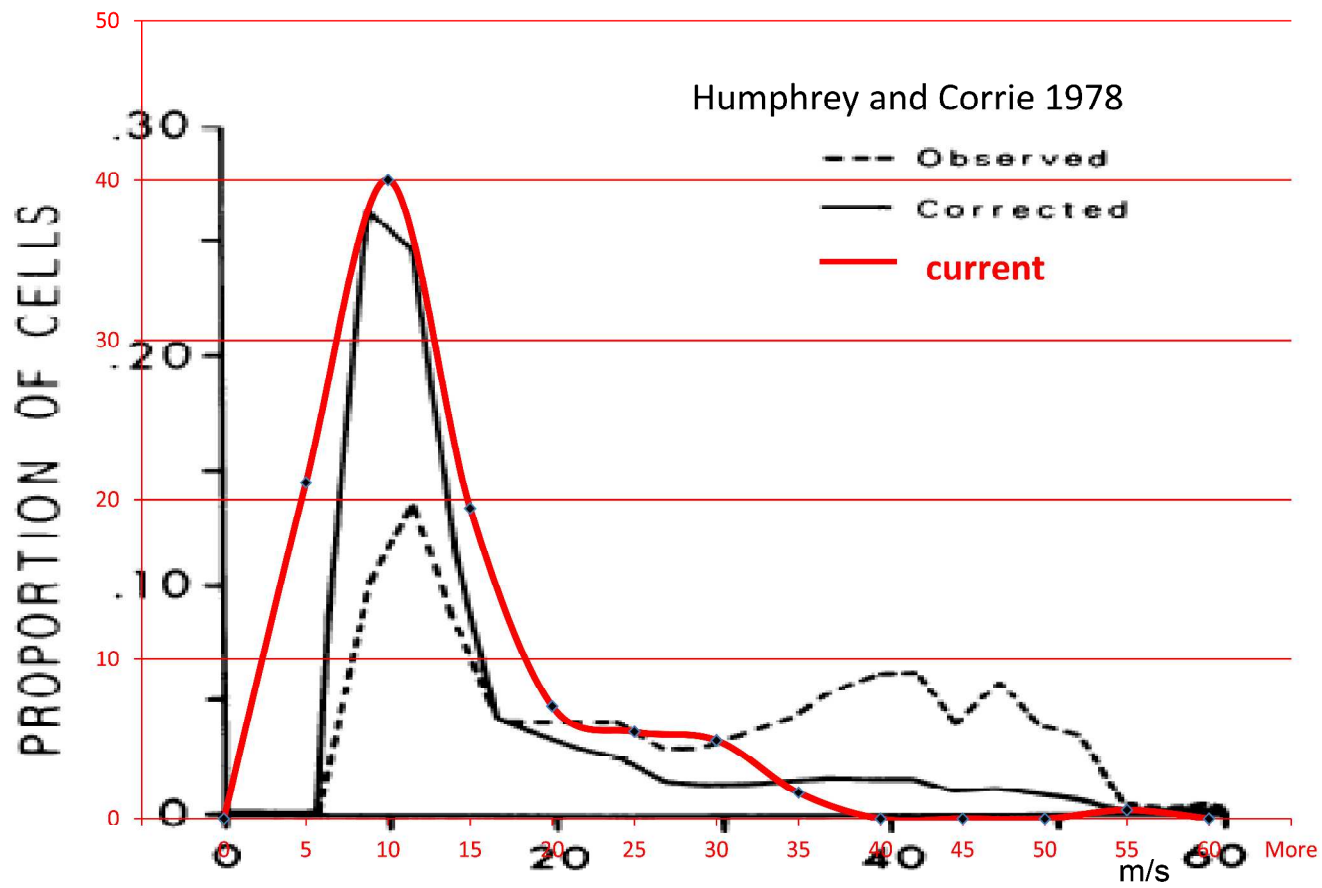


Figure 8. Axon diameter distributions show a progressive proximo-distal shift towards thicker axons and disappearance of thinner axons compatible the parallel pathway hypothesis (Fig. 7).  
87x59mm (600 x 600 DPI)

Review

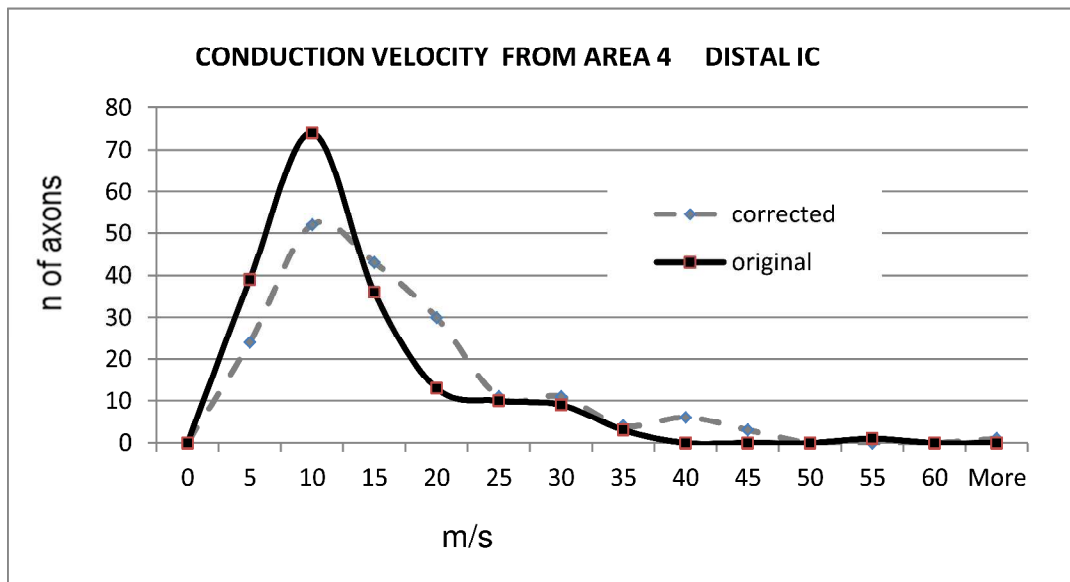


1  
2  
3  
4  
5  
6  
7  
8  
9  
10  
11  
12  
13  
14  
15  
16  
17  
18  
19  
20  
21  
22  
23  
24  
25  
26  
27  
28  
29  
30  
31  
32  
33  
34  
35  
36  
37  
38  
39  
40  
41  
42  
43  
44  
45  
46  
47  
48  
49  
50  
51  
52  
53  
54  
55  
56  
57  
58  
59  
60



Supplementary Figure 1. Superposition of the spectrum of conduction velocities computed from axon diameters in this study (red histogram) on conduction velocity measurements of Humphrey and Corrie (1978).

<i>Bin</i>	CCT2,CCT5 sum	
	corrected	original
0	0	0
5	24	39
10	52	74
15	43	36
20	30	13
25	11	10
30	11	9
35	4	3
40	6	0
45	3	0
50	0	0
55	0	1
60	0	0
More	1	0



Supplementary Figure 2. Table and histograms of distribution of conduction velocities computed from axonal diameters before and after correction for shrinkage (see text).