

AperTO - Archivio Istituzionale Open Access dell'Università di Torino

Determinants of US financial fragility conditions

This is the author's manuscript

Original Citation:

Availability:

This version is available <http://hdl.handle.net/2318/142422> since 2016-09-30T16:32:19Z

Published version:

DOI:10.1016/j.ribaf.2012.08.003

Terms of use:

Open Access

Anyone can freely access the full text of works made available as "Open Access". Works made available under a Creative Commons license can be used according to the terms and conditions of said license. Use of all other works requires consent of the right holder (author or publisher) if not exempted from copyright protection by the applicable law.

(Article begins on next page)



UNIVERSITÀ DEGLI STUDI DI TORINO

This is an author version of the contribution published on:

Research in International Business and Finance, vol. 30(1), 2014,
p.377-392

DOI: <http://dx.doi.org/10.1016/j.ribaf.2012.08.003>

The definitive version is available at:

<http://www.sciencedirect.com/science/article/pii/S0275531912000402>

Determinants of US financial fragility conditions*

Fabio C. Bagliano

Università di Torino and CeRP-Collegio Carlo Alberto

Claudio Morana

Università di Milano Bicocca, CeRP-Collegio Carlo Alberto,
Fondazione Eni Enrico Mattei (Milano) and ICER (Torino)

Revised draft: August 2012

Abstract

The recent financial crisis has highlighted the fragility of the US (and other countries') financial system under several respects. In this paper, the properties of a summary index of financial fragility, obtained by combining information conveyed by the "Agency", "Ted" and "BAA-AAA" spreads, timely capturing changes in credit and liquidity risk, distress in the mortgage market, and corporate default risk, are investigated over the 1986-2010 period. The empirical results show that observed fluctuations in the financial fragility index can be attributed to identified (global and domestic) macroeconomic (20%) and financial disturbances (40% to 50%), over both short- and long-term horizons, as well as to oil-supply shocks in the long-term (25%). The investigation of specific episodes of financial distress, occurred in 1987, 1998 and 2000, and, more recently, over the 2007-2009 period, shows that sizable fluctuations in the index are largely determined by financial shocks, while macroeconomic disturbances have generally had a stabilizing effect.

Keywords: financial fragility, US, macro-finance interface, international business cycle, factor vector autoregressive models, financial crisis, Great Recession

JEL classification: C22; E32; G12

***Acknowledgements.** Financial support from MIUR (PRIN project) is gratefully acknowledged.

1 Introduction

As recent global macroeconomic and financial events have powerfully shown, strong interlinkages relate financial and macroeconomic dynamics, also across countries, due to financial and economic integration. Indeed, the 2007-2008 financial crisis and the ensuing “Great Recession” is an important example of a domestic (US) financial crisis, whose depressive effects quickly spilled over worldwide, amplified by the leading role of the US economy. The originating mechanism of the crisis can be traced back to excess debt creation in the US subprime mortgage market, leading to a boom-bust cycle in credit volumes and house and stock prices. Procyclical bank loans, a benign price stability environment, accommodative monetary policy, growing external debt, and deregulated financial markets all worked as amplifying mechanisms (see Bagliano and Morana, 2012 for a recent account of the crisis).

One of the likely reasons for the unprecedented depth of the crisis is the mounting fragility of the US financial sector, associated with excessive leverage and overstretching of credit. Such a phenomenon presents a number of different but interrelated dimensions, involving, among others, credit and liquidity risk conditions, the amount of stress in the mortgage market and corporate default risk perceptions. A summary measure of financial market conditions is not readily available, many indicators providing useful information on specific aspects of the financial system’s state of health.

In this paper we analyze the properties of the synthetic index of US economic and financial fragility proposed by Bagliano and Morana (2012), obtained by combining the information conveyed by several indicators (return differentials) that are closely scrutinized by financial economists, professionals and policymakers. Specifically, we employ a Factor Vector Autoregressive model to assess the relative importance of global (worldwide) and domestic (US) factors in determining fluctuations of the proposed US financial fragility measure over the 1986-2010 period.

The global factors include unobserved driving forces extracted from a large set of macroeconomic and financial quantities covering 50 countries and capturing worldwide developments in a wide range of real activity, labor market, liquidity, interest rates and financial price variables. In addition, a number of domestic variables are included in order to account for several sources of US financial disturbances and fundamental economic imbalances. Finally, a set of variables concerning global oil demand and supply conditions are added to allow for potential effects of oil market developments on US economic and financial conditions.

To preview the main results of the paper, we find that the bulk of fluctuations in the financial fragility index can be attributed to identified macroeco-

nomic, financial (of both a global and local nature) and oil market structural disturbances, over both short- and long-term (10-year) horizons. Fundamental financial shocks yield the largest contribution, accounting for about half of the index variability in the short-term and 40% over the 10-year horizon, whereas the corresponding figures for macroeconomic disturbances are 25% and 15%, and 5% and 25% for oil market supply side disturbances. Moreover, the analysis of specific episodes of financial distress, occurred in 1987, 1998 and 2000, and, more recently, over the 2007-2009 period, shows that sizable fluctuations in the index are largely determined by fundamental financial shocks (risk factors shocks in particular), while macroeconomic disturbances have generally had a stabilizing effect on the fragility index. Actually, consistent with the Great Moderation phenomenon, macroeconomic shocks had a stabilizing impact on the fragility index until the occurrence of the recent financial crisis, dominating over financial shocks until the mid 1990s, and offsetting the latter thereafter.

The rest of the paper is organized as follows. In Section 2 the econometric methodology is outlined, while Section 3 describes the construction of the US financial fragility index and the data used to model the most relevant global and local factors determining its behavior. Section 4 discusses specification issues, and Section 5 presents empirical results. Finally, the main conclusions are drawn in Section 6.

2 Econometric methodology

The econometric model is composed of two blocks of equations. The former describes the dynamics of the main macroeconomic and financial determinants of an index capturing US financial system's fragility conditions (presented in detail in the following section), including both unobserved global factors and observed US variables. The second block, which is used in order to estimate the unobserved global macro-financial factors, captures the dynamics of the main macroeconomic and financial variables for a large set of developed and emerging economies.

2.1 The econometric model

The first set of equations is composed of a number of *unobserved* ($\mathbf{F}_{1,t}$) and *observed* ($\mathbf{F}_{2,t}$) global macro-financial factors and oil market demand and supply side variables (\mathbf{O}_t), collected in the $r \times 1$ vector $\mathbf{F}_t = [\mathbf{F}'_{1,t} \mathbf{F}'_{2,t} \mathbf{O}'_t]'$. The second block of equations refers to q macro-financial variables for each of m countries (for a total of $n = m \times q$ equations). The joint dynamics of

the global macro-finance-oil market factors and the country-specific macro-finance interactions are then modelled by means of the following reduced form dynamic factor model

$$(\mathbf{I} - \mathbf{P}(L))(\mathbf{F}_t - \boldsymbol{\kappa}_t) = \boldsymbol{\eta}_t \quad (1)$$

$$(\mathbf{I} - \mathbf{C}(L))((\mathbf{Z}_t - \boldsymbol{\mu}_t) - \boldsymbol{\Lambda}(\mathbf{F}_t - \boldsymbol{\kappa}_t)) = \mathbf{v}_t. \quad (2)$$

The model is cast in a weakly stationary representation, as $(\mathbf{F}_t - \boldsymbol{\kappa}_t), (\mathbf{Z}_t - \boldsymbol{\mu}_t) \sim I(0)$, where $\boldsymbol{\mu}_t$ and $\boldsymbol{\kappa}_t$ are $n \times 1$ and $r \times 1$ vectors of deterministic components, respectively, with $r \leq n$, including an intercept, and, possibly, linear or non linear trend terms. Global dynamics are described by the stationary finite order polynomial matrix in the lag operator $\mathbf{P}(L)$, $\mathbf{P}(L) \equiv \mathbf{P}_1 L + \mathbf{P}_2 L^2 + \dots + \mathbf{P}_p L^p$, where $\mathbf{P}_j, j = 1, \dots, p$, is a square matrix of coefficients of order r , and $\boldsymbol{\eta}_t \sim i.i.d.(\mathbf{0}, \boldsymbol{\Sigma}_\eta)$ is a $r \times 1$ vector of reduced form shocks driving the \mathbf{F}_t factors. The contemporaneous effects of the global factors on each country variables in \mathbf{Z}_t are measured by the loading coefficients collected in the $n \times r$ matrix $\boldsymbol{\Lambda} = [\boldsymbol{\Lambda}'_{F_1} \boldsymbol{\Lambda}'_{F_2} \boldsymbol{\Lambda}'_O]'$. Finally, $\mathbf{v}_t \sim i.i.d.(\mathbf{0}, \boldsymbol{\Sigma}_v)$ is the $n \times 1$ vector of reduced-form idiosyncratic (i.e. country-specific) disturbances, with $E[\eta_{jt} v_{is}] = 0$ for all i, j, t, s , and $\mathbf{C}(L)$ is a finite order stationary block diagonal polynomial matrix in the lag operator, $\mathbf{C}(L) \equiv \mathbf{C}_1 L + \mathbf{C}_2 L^2 + \dots + \mathbf{C}_c L^c$, where $\mathbf{C}_j, j = 0, \dots, c$, is a square matrix of coefficients of order n , partitioned as

$$\mathbf{C}_j = \begin{bmatrix} \mathbf{C}_{j,11} & \mathbf{0} & \dots & \mathbf{0} \\ q \times q & & & \\ \mathbf{0} & \mathbf{C}_{j,22} & \dots & \mathbf{0} \\ & q \times q & & \\ \vdots & \dots & \ddots & \vdots \\ \mathbf{0} & \mathbf{0} & \dots & \mathbf{C}_{j,mm} \\ & & & q \times q \end{bmatrix}. \quad (3)$$

The specification of the model in (1)-(2) embeds a set of important assumptions on the structure of global and local linkages: (i) global shocks ($\boldsymbol{\eta}_t$) affect both the global and local economy through the polynomial matrix $\mathbf{P}(L)$ and the factor loading matrix $\boldsymbol{\Lambda}$; (ii) country-specific disturbances (\mathbf{v}_t) do not affect global factor dynamics, limiting their impact only to the country of origin ($\mathbf{C}(L)$ is assumed to be block (own-country) diagonal).

By substituting (1) into (2), the reduced form vector autoregressive (VAR) representation of the dynamic factor model can be written as

$$(\mathbf{I} - \mathbf{A}(L))(\mathbf{Y}_t - \boldsymbol{\gamma}_t) = \boldsymbol{\varepsilon}_t \quad (4)$$

where $\mathbf{Y}_t = [\mathbf{F}'_t \mathbf{Z}'_t]'$, $\boldsymbol{\gamma}_t = [\boldsymbol{\kappa}'_t \boldsymbol{\mu}'_t]'$,

$$\mathbf{A}(L) = \begin{pmatrix} \mathbf{P}(L) & \mathbf{0} \\ [\boldsymbol{\Lambda}\mathbf{P}(L) - \mathbf{C}(L)\boldsymbol{\Lambda}] & \mathbf{C}(L) \end{pmatrix},$$

$$\boldsymbol{\varepsilon}_t \equiv \begin{bmatrix} \boldsymbol{\varepsilon}_{1,t} \\ \boldsymbol{\varepsilon}_{2,t} \end{bmatrix} = \begin{bmatrix} \mathbf{I} \\ \boldsymbol{\Lambda} \end{bmatrix} [\boldsymbol{\eta}_t] + \begin{bmatrix} \mathbf{0} \\ \mathbf{v}_t \end{bmatrix},$$

with variance-covariance matrix

$$E[\boldsymbol{\varepsilon}_t \boldsymbol{\varepsilon}'_t] = \boldsymbol{\Sigma}_\varepsilon = \begin{pmatrix} \boldsymbol{\Sigma}_\eta & \boldsymbol{\Sigma}_\eta \boldsymbol{\Lambda}' \\ \boldsymbol{\Lambda} \boldsymbol{\Sigma}_\eta & \boldsymbol{\Lambda} \boldsymbol{\Sigma}_\eta \boldsymbol{\Lambda}' + \boldsymbol{\Sigma}_v \end{pmatrix}.$$

2.2 Estimation

The model is estimated by means of a two-stage approach. First, consistent and asymptotically normal estimation of the set of equations in (2) is obtained following the iterative procedure proposed in Morana (2011); the latter bears the interpretation of *QML* estimation performed by means of the EM algorithm. In the *E*-step the unobserved factors ($\mathbf{F}_{1,t}$) are estimated, given the observed data and the current estimate of model parameters, by means of principal components analysis (*PCA*); in the *M*-step the likelihood function is maximized (OLS estimation of the $\mathbf{C}(L)$ matrix is performed) under the assumption that the unobserved factors are known, conditioning on their *E*-step estimate. Convergence to the one-step *QML* estimate is ensured, as the value of the likelihood function is increased at each step.

The iterative procedure can be described as follows:

- An initial estimate of the r_1 unobserved common factors in $\mathbf{F}_{1,t}$ is obtained through the application of Principal Components Analysis (PCA) to subsets of homogeneous cross-country data $\mathbf{Z}_i = \{\mathbf{Z}_{i,1}, \dots, \mathbf{Z}_{i,T}\}$, $i = 1, \dots, r_1$, $r_1 \leq q$ ¹; then, an initial estimate of the polynomial matrix $\mathbf{C}(L)$ and the factor loading matrix $\boldsymbol{\Lambda}$ is obtained by means of OLS estimation of the equation system in (2). This is performed by first regressing $\hat{\mathbf{F}}_t$ on $\boldsymbol{\kappa}_t$ to obtain $\hat{\boldsymbol{\kappa}}_t$; then the actual series \mathbf{Z}_t are regressed on $\boldsymbol{\mu}_t$ and $\hat{\mathbf{F}}_t - \hat{\boldsymbol{\kappa}}_t$ to obtain $\hat{\boldsymbol{\Lambda}}$ and $\hat{\boldsymbol{\mu}}_t$; $\hat{\mathbf{C}}(L)$ is then obtained by means of OLS estimation of the VAR model for the gap variables $\mathbf{Z}_t - \hat{\boldsymbol{\mu}}_t - \hat{\boldsymbol{\Lambda}}(\hat{\mathbf{F}}_t - \hat{\boldsymbol{\kappa}}_t)$ in (2);

¹For instance, a stock return global factor can be estimated by means of the application of PCA to the vector of cross-country stock return data, and so on.

- then, a new estimate of the unobserved factors $\mathbf{F}_{1,t}$ is obtained by means of PCA applied to the filtered series $\mathbf{Z}_t^* = \mathbf{Z}_t - [\mathbf{I} - \hat{\mathbf{C}}(L)] \hat{\mathbf{\Lambda}}_* (\hat{\mathbf{F}}_{*,t} - \hat{\mathbf{\kappa}}_{*,t})$, with $\hat{\mathbf{F}}_{*,t} = [\mathbf{F}'_{2,t} \ \mathbf{O}'_t]'$, $\hat{\mathbf{\Lambda}}_* = [\hat{\mathbf{\Lambda}}'_{F_2} \ \hat{\mathbf{\Lambda}}'_O]'$ and $\hat{\mathbf{\kappa}}_{*,t} = [\hat{\mathbf{\kappa}}'_{F_2,t} \ \hat{\mathbf{\kappa}}'_{O,t}]'$;
- next, a new estimate of the polynomial matrix $\mathbf{C}(L)$ and the factor loading matrix $\mathbf{\Lambda}$ is obtained as described in the initialization step. The iterative procedure is then repeated until convergence.

In the second stage of the procedure, consistent and asymptotically normal estimation of the set of equations in (1) is performed by means of PC-VAR estimation (Morana, 2012), treating the consistently estimated factors as observed. The latter is achieved in the following steps:

- PCA is applied to $\mathbf{x}_t \equiv \hat{\mathbf{F}}_t - \hat{\mathbf{\kappa}}_t$ and the first s PCs, $\hat{\mathbf{f}}_t$, are computed;
- the dynamic vector regression

$$\begin{aligned} \mathbf{x}_t &= \mathbf{D}(L)\hat{\mathbf{f}}_t + \boldsymbol{\varsigma}_t \\ \boldsymbol{\varsigma}_t &\sim I.I.D.(\mathbf{0}, \boldsymbol{\Sigma}_{\varsigma}), \end{aligned} \tag{5}$$

where $\mathbf{D}(L) \equiv \mathbf{D}_1 L + \mathbf{D}_2 L^2 + \dots + \mathbf{D}_p L^p$ has all the roots outside the unit circle, is estimated by OLS to obtain $\hat{\mathbf{D}}(L)$;

- the (implied OLS) estimate of the VAR parameters in (1) is then obtained by solving

$$\hat{\mathbf{P}}(L)_{PCVAR} = \hat{\mathbf{D}}(L)\hat{\mathbf{\Xi}}'_s,$$

where $\hat{\mathbf{\Xi}}_s$ is the matrix of the eigenvectors associated with the first s ordered eigenvalues of $\hat{\mathbf{\Sigma}}$ ($\mathbf{\Sigma} = E[\mathbf{x}_t \mathbf{x}'_t]$).

2.3 Dynamic analysis

The structural vector moving average representation for the global model in (1) can be written as

$$(\mathbf{F}_t - \boldsymbol{\kappa}_t) = \mathbf{H}_F(L)\mathbf{K}^{-1}\boldsymbol{\xi}_t, \tag{6}$$

where $\boldsymbol{\xi}_t$ is the vector of the r structural shocks driving the common factors in \mathbf{F}_t , i.e. $\boldsymbol{\xi}_t = \mathbf{K} \boldsymbol{\eta}_t$, \mathbf{K} is a $r \times r$ invertible matrix, and

$$\mathbf{H}(L) \equiv \begin{pmatrix} \mathbf{H}_F(L) & \mathbf{0} \\ \mathbf{H}_{FZ}(L) & \mathbf{H}_Z(L) \end{pmatrix} \equiv (\mathbf{I} - \mathbf{A}(L))^{-1}.$$

By assumption the structural factor shocks are orthogonal and have unit variance, so that $E[\boldsymbol{\xi}_t \boldsymbol{\xi}_t'] = \mathbf{K} \boldsymbol{\Sigma}_\eta \mathbf{K}' = \mathbf{I}_r$. To achieve exact identification of the structural disturbances, additional $r(r-1)/2$ restrictions need to be imposed. Since $\boldsymbol{\eta}_t = \mathbf{K}^{-1} \boldsymbol{\xi}_t$, imposing exclusion restrictions on the contemporaneous impact matrix amounts to imposing zero restrictions on the elements of \mathbf{K}^{-1} , for which a lower-triangular structure is assumed. This latter assumption implies a precise “ordering” of the common factors in \mathbf{F}_t . In particular, the first factor is allowed to have a contemporaneous impact on all other factors, but reacts only with a one-period lag to the other structural disturbances; instead, the last factor is contemporaneously affected by all structural shocks, having only lagged effects on all other factors. Operationally, \mathbf{K}^{-1} (with the $r(r-1)/2$ zero restrictions necessary for exact identification imposed) is estimated by the Choleski decomposition of the factor innovation variance-covariance matrix $\boldsymbol{\Sigma}_\eta$, i.e. $\hat{\mathbf{K}}^{-1} = \text{chol}(\hat{\boldsymbol{\Sigma}}_\eta)$.

Forecast error variance and historical decompositions can then be obtained by means of standard formulas. Following the thick modelling strategy of Granger and Jeon (2004), median estimates of the parameters of interest, impulse responses, forecast error variance and historical decompositions, as well as their confidence intervals, robust to model misspecification, can be obtained by means of simulated implementation of the proposed estimation strategy. See Morana (2011, 2012) for a detailed account of the econometric methodology.

3 The data

In this section we briefly describe the construction of the index of US financial fragility, and the global and local factors that we use in our empirical analysis.

3.1 A US financial fragility index

In order to investigate the relative importance of global and local factors as determinants of US financial conditions, an index intended to capture financial distress in US markets is constructed, summarizing information from three widely used indicators. In particular, following Bagliano and Morana (2012), we look at the *TED* spread, i.e. the differential between the 3-month

LIBOR rate (Euro dollar deposit rate) and the yield on 3-month Treasury bills; being the difference between an unsecured deposit rate and a risk-free rate, the *TED* spread can be taken as a measure of credit and liquidity risk. Moreover, we use the *AGENCY* spread between the yield on 30-year bonds issued by government-sponsored agencies (Freddie Mae and Fannie Mac) and 30-year Treasury bonds, capturing stress in the mortgage market. Finally, we look at the yield differential between *BAA*-rated and *AAA*-rated corporate bonds ($BAA - AAA$), providing a direct measure of corporate default risk and, more generally, a measure of investors' risk-taking attitude, since a contraction of this spread signals an increase in the demand for riskier bonds relative to safer ones. As shown in Figure 1, over the 1980-2010 period, the three spreads strongly comove over the medium- to long-term, but display variations that are not perfectly correlated in the short-term (the contemporaneous quarterly correlation coefficients ranging from 0.6 to 0.74), suggesting that they contain different information on complementary dimensions of financial distress and perceived risk. To obtain a synthetic indicator of financial conditions, we extract the first principal component from the *TED*, *AGENCY*, and $BAA - AAA$ measures, which accounts for about 80% of the overall variability of the three spreads; the resulting variable, interpreted as an index of US financial fragility (*FRA*), is shown in Figure 1.

The behavior of the US financial fragility index over time is the result of many different economic and financial disturbances of a global and local nature. In the following empirical analysis, three sets of factors are specifically considered: global (world-wide) factors, local (US) factors and factors related to the international oil market.

3.2 Global factors

First, a set of macroeconomic and financial variables is constructed in order to capture the potential effects of world-wide economic conditions on the US financial system. To this aim, we use seasonally adjusted quarterly macroeconomic time series data for 31 advanced economies, 5 advanced emerging economies and 14 secondary emerging economies, for a total of 50 countries.²

²The advanced countries are: Australia, Austria, Belgium, Canada, Czech Republic, Denmark, Finland, France, Germany, Greece, Hong Kong, Iceland, Ireland, Israel, Italy, Japan, Luxembourg, Netherlands, New Zealand, Norway, Portugal, Singapore, Slovakia, Slovenia, South Korea, Spain, Sweden, Switzerland, Taiwan, United Kingdom. The advanced emerging economies are: Brazil, Hungary, Mexico, Poland, South Africa. The secondary emerging economies are: Argentina, Chile, China, Colombia, India, Indonesia, Malaysia, Morocco, Pakistan, Peru, Philippines, Russia, Thailand, Turkey. The main data

From this large amount of time series, 12 unobserved “global” factors, driving common macro-financial dynamics in all countries, are estimated by means of the iterative procedure described in the methodological section.

In particular, global macroeconomic conditions are captured by a *real activity factor* (Y), extracted from real GDP, private consumption and investment growth series; an *employment factor* (E), extracted from civilian employment growth series; an *unemployment rate factor* (U), obtained from changes in unemployment rate series; a *real wage factor* (W), extracted from real wage growth series; a *fiscal stance factor* (G), extracted from public expenditure to GDP ratio growth series; and a global bilateral *US\$ exchange rate index* (X), obtained from the various bilateral exchange rates against the US\$ returns. Monetary and financial developments are captured by a *nominal factor* (N), extracted from the inflation rate, nominal money growth, short- and long-term interest rate series; an *excess liquidity index* (L), obtained from changes in the M3(or M2) to GDP ratio and the private loans to GDP ratio series; a *real stock market price factor* (F), extracted from the real stock market price return series; a *real housing price factor* (H), extracted from the real housing price return series; a *real short-term rate factor* (SR), obtained from the real short-term interest rate series; and a *term spread factor* (TS), extracted from the term spread series. The monetary and financial factors account for a sizeable fraction of the overall variability of the relevant component series, ranging from 30% (in the case of the H factor) to 50% (F), with the exception of the excess liquidity factor L (15%), whereas the real activity, labor market and fiscal policy factors account for about 20% of the overall variability. For OECD countries the macro-financial sample extends from 1980(1) through 2010(3), while for non OECD countries only from 1995(1) through 2010(3); therefore, over the period 1980-1994, the above global factors reflect commonalities occurring across OECD countries only.

In addition, also two observed variables are included in the set of global influences on the US financial fragility index: the rates of change of the *real gold price* (GD) and the *IMF non-energy commodities price index* (M) return.

3.3 US factors

Along with the global factors described above, a set of 8 US variables is added to capture several sources of US financial disturbances and fundamental im-

source is IMF *International Financial Statistics*; other data sources are *FRED2* (Federal Reserve Bank of St. Louis), the OECD and BIS (unofficial) house price data sets, and the International Energy Agency (IEA-OECD) data sets.

balances, observed over the whole 1980(1)-2010(3) period. On the financial side, the US factors include: the *Fama* and *French* (1993) *size* (*SMB*) and *value* (*HML*) factors³, the Carhart (1997) *momentum factor* (*MOM*)⁴, the *stocks' liquidity factor* (*PSL*) proposed by Pastor and Stambaugh (2003)⁵, changes in the S&P 500 stock return *volatility* (*FV*) estimated from an asymmetric GARCH(1,1) model of monthly stock returns, and the *leverage factor* (*LEV*) proposed by Adrian, Etula and Muir (2011)⁶. Moreover, changes in the ratio of the US *government budget deficit to GDP* (*Fd*) and the ratio of the US *trade deficit to GDP* (*Td*) have been included to capture US-specific policy and balance-of-payment factors.

3.4 Oil market factors

Finally, 10 variables concerning global oil demand and supply conditions have been included in order to capture potential effects of oil market developments on the US financial fragility index. In particular, we use data on *world oil reserves* growth (*R*), net *world oil production changes* (*Pp*, *Pm* for positive and negative changes respectively), *OECD oil refinery margins* growth (*RM*), *world oil consumption* (*C*) growth, *world oil inventories* (*INV*), the rate of change of the *real WTI oil price* (*OP*), changes of *nominal WTI oil price volatility* (*OV*), the *futures basis*, i.e., the spread between the twelve-month futures and the spot oil price over the spot oil price (*FB*), and the growth rate of the “*T*” *speculation index* (*WT*) proposed by Working (1960). The sample for the oil market variables extends from 1986(1) through 2010(3).

³The size factor is the return differential between small and big size portfolios; the value factor is the return differential between high and low book-to-market-ratio portfolios. Adverse economic conditions should be reflected in negative changes of the size factor (small firms being more severely affected during downturns) and positive changes of the value factor (due to flight-to-quality effects, whereby investors shift from growth stocks to value stocks).

⁴The momentum factor is the difference between the returns on the high and low past performance portfolios, measured over the previous four quarters. The rationale of this factor is that, if past performance is an indicator of future returns, it can be expected to be larger over phases of economic expansion.

⁵The Pastor-Stambaugh liquidity factor is constructed as a cross-sectional average of individual-stock liquidity measures, the latter being the effect of the transaction volume in one month on next month individual return.

⁶This factor is computed as the ratio of total financial assets over the difference between total financial assets and total financial liabilities of security brokers-dealers as reported in Table L.129 of the US Federal Reserve Flow of Funds. It may be considered as a proxy for financial instability, i.e. the higher the ratio, the higher the fragility of the financial sector.

4 Model specification

The identification of the structural shocks, being the fundamental driving forces of the US financial system's conditions, has been performed by means of the Cholesky recursive identification strategy already mentioned in the methodological section, with the financial fragility index FRA ordered last, and therefore being contemporaneously affected by all other structural (global, US-specific, and oil market) disturbances. The chosen ordering for the factors rests on the following set of assumptions about contemporaneous (within-quarter) reactions.

First, it is assumed that the oil market supply side variables (including reserves R , net oil production changes Pm and Pp , and refinery margins RM) are determined mainly by geophysical factors that are exogenous to macro-financial market conditions at least within the quarter. Then, the block of the above mentioned four oil supply side variables is placed first, allowing refinery margins to react within-quarter to production and reserves shocks, and production reacting to reserve disturbances only.

A set of relatively slow-moving macroeconomic variables, including both global and US-specific factors, is placed next, and therefore allowed to react contemporaneously to oil market supply side conditions. The chosen ordering goes from the global employment, unemployment, real activity, and fiscal policy factors (i.e. E , U , Y and G) to the US government budget and trade deficit to GDP ratios (Fd and Td), and finally to the global nominal and real wage factors (N and W). It is then assumed that, over the business cycle, real activity is determined by labor market conditions through a short-run production function, with output growth feeding back on employment and unemployment with a (one-quarter) delay, capturing a sluggish adjustment of the labor market. Then, the global fiscal stance factor contemporaneously adjusts to business cycle conditions, showing a (one-quarter) delayed impact on real activity. The inclusion of the US fiscal and trade deficit to GDP ratios also allows us to account for two potential sources of global imbalances; both variables are assumed to contemporaneously adjust to global business cycle conditions, consistent with the fact that, though the US have largely been a net importer over the time span investigated, they still are one of the world top exporters in many industrial sectors, including machinery and equipment, motor vehicles, aircraft and food. Global aggregate demand then feeds back to global aggregate supply and prices, that adjust (through the nominal factor following in the ordering) with a one-quarter delay. Finally, real wages contemporaneously react to all aggregate demand and supply developments.

Oil consumption C follows next in the ordering, based on the assumption

that flow oil demand is contemporaneously determined by global business cycle conditions.

Finally, a set of mainly financial, relatively fast-moving, variables, comprising global and US-specific factors, is placed next, with the following ordering: excess liquidity, real short-term rate, term spread, real housing prices, and exchange rate global factors (L , SR , TS , H and X); they are then followed by a sub-set of US financial variables, namely stock market volatility, the size and value factors, the momentum factor, the stocks' liquidity factor, and the leverage factor (FV , SMB , HML , MOM , PSL , and LEV); finally, the remaining variables concerning the oil market, i.e., the Working's T speculative index, the futures market basis, oil inventories, the real oil price, and nominal oil price volatility (WT , FSP , INV , OP and OV), are followed by the non-energy commodities price index, the global real stock return factor, and the real gold price (M , F and GD).

Within this last set of variables, the selected ordering implies that the liquidity stance (L), set by central banks according to the state of the business cycle, contemporaneously determines the real short-term interest rate, and affects asset prices and financial risk (captured by the size, value, momentum, stocks' liquidity and leverage factors, and stock market volatility), the latter being also a proxy for market expectations about future fundamentals. Consistent with potential leaning-against-the-wind strategies followed by monetary authorities, liquidity is allowed to react to asset prices and financial risk developments only with a (one-quarter) delay. Oil inventories (INV) contemporaneously respond to different real and financial factors, and become the transmission channel of financial (fundamental) and speculative (non-fundamental) oil demand shocks to the real oil price (OP), the latter disturbances being captured by the Working's-T index (WT) and the futures basis shocks (FB). Finally, real non-energy commodities price index returns, real stock market returns, and real gold price returns follow in the ordering. This allows for measuring the contemporaneous spillover of oil price shocks to non-energy commodities markets and the stock market, as well as studying the interaction across various classes of assets under a portfolio allocation perspective. The ordering is also motivated by letting stock market returns embed all contemporaneous information on macro-financial and oil market conditions and gold (being a "crisis asset" whose demand is expected to be stronger during periods of economic and financial turmoil) also be affected by stock market dynamics.

Finally, as a general caveat, it should be recalled that the interpretation of the results of the forecast error variance and historical decompositions presented in the following section in terms of structural economic and financial disturbances may be sensitive to the chosen ordering of the variables. As the

implied recursive structural model is exactly identified, the assumed restrictions cannot be tested. Yet, as a robustness check, pairwise weak exogeneity testing can always be carried out. A joint test, based on the Bonferroni bounds principle, carried out using the 528 possible bivariate tests, implied by the recursive structure, which can be computed out of the 33 variables, would not reject, even at the 20% significance level, the weak exogeneity null hypothesis.

5 Empirical results

Based on the identification scheme discussed in the previous section, concerning oil market demand and supply interactions, eight structural shocks are then identified, i.e. an *oil reserves* shock, *net positive* and *negative production* shocks, a *refinery margins* shock, *oil consumption* and *inventories preferences* shocks, and *other real oil price* and *nominal oil price volatility* shocks.

Moreover, eight structural macroeconomic shocks can be identified, i.e., an *aggregate demand* shock, a *labor supply* shock, a (*negative*) *labor demand* shock, a *productivity* shock, *US fiscal* and *trade deficit* shocks, a (global) *fiscal stance* shock, and a *core inflation* shock.

Finally, seventeen financial structural shocks are identified, i.e., an *excess liquidity* shock; a set of *speculative asset price (portfolio)* shocks, i.e., a *real stock market prices* shock, a *real housing prices* shock, a *real gold price* shock and a *real non energy commodity price index* shock; an *US\$ exchange rate index* shock; a *risk-free rate* shock; two oil futures market speculative shocks, i.e., *Working's-T* and *futures basis* shocks; a set of *risk factors* shocks, measuring revisions in market expectations about future fundamentals, i.e., a *risk aversion* shock, *size*, *value*, *leverage*, *stocks' liquidity*, and *momentum* factor shocks; a *term spread* shock; a *residual economic and financial fragility index* shock. Details on the interpretation of the structural shocks are provided in the Appendix.

We then proceed to the assessment of the relative importance of the various sources of structural disturbances in determining the behavior of the US financial fragility index. To this purpose, first a forecast error variance decomposition is performed over various horizons; second, focusing on several important episodes of financial and economic distress, the changes in the index are decomposed into portions attributable to structural shocks of different nature.

5.1 Forecast error variance decomposition

Median forecast error variance decompositions have been computed up to a horizon of ten years (40 quarters). Table 1 shows the results for selected horizons, that we denote, for expository purposes, as “very short-term” (2 quarters), “short-term” (between 1 and 2 years), “medium-term” (between 3 and 5 years), and “long-term” (10 years) horizons.⁷ Panel A of the table shows the contribution (in percentage points) of each individual structural shock to the forecast error variance of the US fragility index at the various horizons. For ease of discussion, Panel B presents the results with reference to general categories of disturbances, distinguishing among oil market supply side shocks (*SUP*, including shocks to oil reserves, net negative and positive production, and refinery margins), shocks to oil demand (*DEM*, including disturbances to oil consumption and inventories preferences), a group of macroeconomic disturbances (*MAC*, including labor demand and supply, aggregate demand, the fiscal stance, the US budget and trade deficits, core inflation and productivity), a group of fundamental financial shocks (*FIN*, comprising excess liquidity, the risk-free rate, the term spread, housing prices, risk aversion, size, value, momentum, stocks’ liquidity and leverage factors, real non-energy commodity prices, real stock prices, real gold prices, real oil price and nominal oil price volatility), US\$ exchange rate disturbances (*X*), and speculative/non fundamental financial shocks (*SPC*, including the Working’s-T index, and the oil futures basis). Finally, Panel B presents the results for sub-categories of macroeconomic and financial shocks, namely labor market shocks (*LM*: labor demand and supply), aggregate demand disturbances (*Y*), core inflation shocks (*N*), productivity disturbances (*W*), deficits shocks (*FT*: fiscal stance, US fiscal and trade deficits), liquidity and interest rate shocks (*MP*: excess liquidity, risk-free rate, term spread), portfolio allocation shocks (*PA*: real housing prices, real non-energy commodity prices, real stock prices, real gold price, real oil price) and risk factors disturbances (*RF*: nominal oil price volatility, risk aversion, size, value, momentum, stocks’ liquidity and leverage factors).

As shown in the last column of Table 1, the US fragility index is strongly endogenous, since its own shock only accounts for about 15% of total fluctuations in the very short-term and about 11% in the medium- to long-term. This finding supports the proposed interpretation of the fragility index as a synthetic measure, conveying multiple information on different factors determining the state of the financial system. Three main categories of structural shocks account for the bulk of fluctuations in the US financial fragility index. First, fundamental financial shocks (*FIN*) yield the largest contri-

⁷A full set of results is available upon request from the authors.

bution: 50% in the short-term and 40% in the long-term. Within this category, risk factors shocks (*RF*) are particularly relevant (34% in the very short-term and 27% in the long-term), mainly due in the very short-term to risk aversion disturbances (16%) and value factor shocks (14%), and to the size and value factor disturbances over the long-term horizon (10% and 8% respectively). Portfolio allocation shocks (*PA*) follow, accounting for 13% of fragility index fluctuations over the short-term horizon and 10% in the long-term. Second, macroeconomic disturbances (*MAC*) yield a sizable contribution to fragility index fluctuations, accounting for about 25% of the index variability in the very short-term, and still 15% over the longer 10-year horizon. Among macroeconomic shocks, aggregate demand (real activity) (8%), deficits (8%) and labor productivity (6%) shocks are particularly important sources of fluctuations in the short-term, their relevance declining as the forecast horizon increases. Finally, oil market supply side disturbances (*SUP*) sizeably contribute to fragility index fluctuations in the medium- to long-term (20% to 25%), negative net oil production shocks being the most relevant shock (20%). All other sources of structural disturbances play a more limited role in accounting for fluctuations in the fragility index at any forecasting horizon.

5.2 Historical decomposition

In Table 2 and Figures 2-4, changes in the level of the US financial fragility index (net of base prediction) over relevant sub-periods and specific episodes are decomposed into portions attributable to macroeconomic and financial structural disturbances. In particular, two sub-periods are considered: 1986(4) through 2006(4), roughly corresponding to the “Great Moderation” period, preceding the 2007 financial crisis, and 2007(1) through 2010(3), covering the financial crisis and the ensuing recession. In Table 2, we also report details concerning few episodes of interest in the sample, including the 1987(4) stock market crash, the 1990(4) first Persian Gulf War and associated oil price shock, the 1998(4) East Asia crisis, the 2000(2) burst of the dot-com bubble, and the 2007-2009 financial crisis. All episodes mentioned above (and highlighted in Figure 1 by means of vertical lines and shaded areas) are characterized by a quarterly increase of over 20 b.p. in the fragility index. As for the forecast error variance decomposition, the discussion will focus on various categories of shocks, rather than on individual structural disturbances.

5.2.1 The Great Moderation period

As shown in Figure 2, over the whole 1986-2006 period, macroeconomic (*MAC*), financial (*FIN*) and oil market supply side (*SUP*) disturbances have been the largest contributors to US fragility index dynamics. In particular, with the only exception of 1990(4), all the specific episodes selected in Table 2 share some common features, being largely determined by financial shocks, which account almost entirely (80% to 95%) for the overall increase in the fragility index (ranging from 27 to 36 b.p.). In particular, risk factor shocks are always dominant (their contribution going from 16 to 23 b.p.), with portfolio disturbances also playing a role in 2000(2), and liquidity and interest rate shocks in 1987(4). Apart from the 2000(2) episode, macroeconomic disturbances have had a stabilizing effect, dampening to some extent the increase of the fragility index (ranging from -5 to -8 b.p.). Differently, the 1990(4) episode, featuring an increase in the index by 28 b.p., can be fully attributed to disturbances coming from the oil market, with oil supply, demand and speculative shocks contributing importantly (by 16, 7 and 6 b.p., respectively); also in this case, macroeconomic (and exchange rate) shocks have partially offset the increase in the fragility index (-5 b.p.).

5.2.2 The 2007-2010 crisis period

Over the 2007-2010 period, sizable increases in the fragility index, strictly related to relevant financial and economic events, are observed. For instance, the 22 b.p. and 21 b.p. increases in 2007(3) and 2007(4) can be associated with the beginning of the financial crisis in August 2007 and its aftermath, while the 27 b.p. and 102 b.p. increases in 2008(3) and 2008(4) signal the deepening of the financial crisis. Then, five remarkable contractions in the fragility index can be noted over the period 2009(1) through 2010(1), as economic and financial conditions progressively, though temporarily, improved.

As shown in Table 2 and in Figures 3 and 4, the behavior of the fragility index in the second half of 2007 is largely accounted for by financial shocks (14 b.p. and 8 b.p. respectively in 2007(3) and 2007(4)), with shocks coming from the oil market (related to both the demand and the supply side and to financial speculation) also providing a sizable contribution (12 and 8 b.p. in the two quarters). Differently, changes in the fragility index occurred in 2008(3) and 2008(4) are largely driven by macroeconomic shocks. In 2008(3) the overall 27 b.p. increase in the index is fully determined by macroeconomic disturbances, i.e., deficit and productivity shocks, accounting for 70% of the index increase; also, macroeconomic shocks account for 50% of the 49 b.p. increase in the index observed in 2008(4), with a sizeable contribution from

all sources of macroeconomic disturbances, apart from expected inflation. Also financial shocks (especially attributable to portfolio allocation and risk factors) played a relevant role in the final quarter of 2008, determining an increase in the fragility index of 35 b.p. Overall, macroeconomic and financial disturbances jointly account for about 85% of the 102 b.p. increase in the fragility index in 2008(4), oil market shocks adding an additional 13 b.p. increase.

On the other hand, the 2009(1) through 2010(1) period displays progressively improving economic and financial conditions, with the fragility index falling by over 200 b.p. cumulatively, more than compensating the 2007(3)-2008(4) 170 b.p. increase. This episode is again largely driven by the identified macroeconomic and financial disturbances, which jointly account for 70% to 90% of the index contraction in 2009(1)-2009(3), 50% in 2009(4). Apart from core inflation, all macroeconomic shocks yield a sizable contribution to fragility index downward dynamics over the investigated sub period; a similar conclusion holds for financial shocks, with risk factors shocks dominating in 2009(1) and 2009(3).

In order to gauge the effects of the macroeconomic and financial shocks on the level of the fragility index, in Figure 5 the cumulative historical decomposition, with reference to various categories of shocks, is plotted. As shown in Figure 5, over the whole period investigated, fundamental financial shocks were the major upward driver of the fragility index, while oil market supply side shocks were stabilizing up to the mid 1990s and destabilizing thereafter. Moreover, macroeconomic shocks had, in general, a stabilizing impact, reinforcing the destabilizing effects of financial disturbances only during the subprime financial crisis and Great Recession episodes. Moreover, when the joint contribution of macroeconomic and financial shocks (the latter including non fundamental financial and exchange rate disturbances) is considered, there is evidence that macroeconomic shocks were dominating over financial disturbances up to the mid 1990s, and then sufficiently strong to offset the latter thereafter, until the occurrence of subprime crisis. Then, our results support the view that sees the recent financial crisis as marking the end of the Great Moderation period.

6 Conclusions

The recent financial crisis has highlighted the fragility of the US (and other countries') financial system under several respects. A number of indicators and financial variables are closely observed and used as signals of financial market distress. In this paper, a summary index of financial fragility is obtained by combining information conveyed by the "Agency", "Ted" and "BAA-AAA" spreads, timely capturing changes in credit and liquidity risk, distress in the mortgage market, and corporate default risk, all important elements to evaluate the solidity of the financial system. We investigate the determinants of fluctuations in the proposed index of US financial fragility over the 1986-2010 period by means of a large-scale factor vector autoregressive model which allows us to consider a broad range of global (worldwide) and domestic (US) macroeconomic and financial driving forces.

The empirical analysis shows that observed fluctuations in the financial fragility index can be attributed to identified (global and domestic) macroeconomic, financial and oil-market structural disturbances, over both short- and long-term (10-year) horizons. Fundamental financial shocks yield the largest contribution, accounting for 40%-50% of the index variability, whereas macroeconomic disturbances explain about 20% of fluctuations in the index, and oil market supply side shocks disturbances account for an additional 25% over the long-term horizon (though explaining only 5% in the short-term). Moreover, the historical decomposition of the changes in the index during specific episodes, including the financial market crashes occurred in 1987, 1998 and 2000, and the more recent period of financial turmoil and general economic recession (2007-2009), show that sizable fluctuations in the index are largely determined by fundamental financial shocks (related to risk factors shocks in particular), while macroeconomic disturbances have generally had a stabilizing effect. Actually, consistent with the Great Moderation phenomenon, macroeconomic shocks had a stabilizing impact on the fragility index until the occurrence of the recent financial crisis, dominating over financial shocks until the mid 1990s, and offsetting the latter thereafter. Overall, the results support our proposed macroeconomic-financial-oil market framework in modelling the determinant driving forces of US financial fragility.

References

- [1] Adrian T., E. Etula and T. Muir, 2011, Financial intermediaries and the cross-section of asset returns, Federal Reserve Bank of New York Staff Reports n. 464.
- [2] Bagliano, F.C. and C. Morana, 2012, The Great Recession: US dynamics and spillovers to the world economy, *Journal of Banking and Finance*, 36, 1, 1-13.
- [3] Carhart, M., 1997, On persistence of mutual fund performance, *Journal of Finance*, 52, 57-82.
- [4] Fama, E.F. and K.R. French, 1993, Common risk factors in the returns on stocks and bonds, *Journal of Financial Economics*, 33, 3-56.
- [5] Granger C.W. and Y. Jeon, 2004, Thick modelling, *Economic Modelling*, 21, 323-343.
- [6] Morana, C., 2011, Factor vector autoregressive estimation of heteroskedastic persistent and non persistent processes subject to structural breaks, available at SSRN: <http://ssrn.com/abstract=1756376>.
- [7] Morana, C., 2012, PC-VAR estimation of vector autoregressive models, *Open Journal of Statistics*, 2, 251-259.
- [8] Pastor L. and R.F. Stambaugh, 2003, Liquidity risk and expected stock returns, *Journal of Political Economy*, 111, 3, 642-685.
- [9] Working H., 1960, Speculation on hedging markets, *Stanford University Food Research Institute Studies* 1, 185-220.

Appendix: Interpretation of structural shocks

In the empirical model, three sets of structural disturbances are identified: a set of oil market shocks, a set of macroeconomic disturbances, and a large variety of shocks of a financial nature.

Oil market shocks

In the empirical model, eight identified structural shocks drive the dynamics of the oil market, namely an *oil reserves* shock, *net positive* and *negative production* shocks, a *refinery margins* shock, *oil consumption* and *inventories preferences* shocks, and *other real oil price* and *nominal oil price volatility* shocks. The interpretation of the own shocks in terms of reserves, net production and refinery margins shocks is clear-cut, the latter accounting for about 100% of each variable fluctuations on impact (not reported). The interpretation of the oil consumption and inventories own shocks in terms of preferences shocks depends on the former being net of the contemporaneous effect of the macroeconomic variables driving flow oil demand, and the latter also of the effect of the (financial) variables driving financial oil demand. Similarly for the real oil price and nominal oil price volatility own shocks, to which we do not attach an economic interpretation and simply refer as *other* real oil price and nominal oil price volatility shocks.

Macroeconomic shocks

The set of macroeconomic shocks includes eight structural disturbances identified as an *aggregate demand* shock, a *labor supply* shock, a (*negative*) *labor demand* shock, a *productivity* shock, *US fiscal* and *trade deficit* shocks, a (global) *fiscal stance* shock, and a *core inflation* shock.

The aggregate demand (real activity) shock accounts for 80% of real activity fluctuations in the very short-term, also showing a positive impact on real activity (0.67% within two quarters and 0.29% in the long-term) and the nominal factor (0.02%, long-term). The labor supply shocks accounts for 90% of employment fluctuations in the very short-term, sizably contributing to real activity fluctuations in the short-to medium-term (up to 20%). The shock has a positive effect on employment (0.24% in the very short-term; 1.3% in the long-term) and real activity (0.64% in the short-term; 0.18% in the medium-term), as well as a negative effect on the unemployment rate (-0.92% in the short-term; -0.58% in the long term) and the real wage (-0.7% in the short-term; -1.3% in the long-term). The (negative) labor demand

shock accounts for 90% of unemployment rate fluctuations in the very short-term, with a positive effect on the unemployment rate (0.28% in the very short-term; 0.35% in the long-term) and a negative effect employment (-0.10% short-term), real activity (-0.07% in the very short-term; -0.17% in the long-term), and the real wage (-0.09% in the short-term; -0.33% in the long-term).

The productivity shock is the largest contributor to real activity long-term fluctuations (20%), stimulating real activity at any horizon (0.3% at the 1-year horizon and 0.7% at the 10-year horizon) and having a negative short-term impact on the nominal factor (-0.01%). It also positively impacts on the real short-term rate at any horizon (0.11% in the long-term). The US fiscal deficit shock accounts for 85% of US fiscal deficit to GDP ratio fluctuations in the very short-term. It leads to a long-term contraction in employment (-0.37%), a short-term contraction in real activity (-0.23%) and a temporary increase in the unemployment rate (0.25%). The US trade deficit shock accounts for 80% of US trade deficit to GDP ratio fluctuations in the very short-term. It leads to a long-term contraction in real activity (-0.4%) and a long-term increase in the unemployment rate (0.3%). The above dynamics are consistent with both shocks (being net of the global aggregate demand, labor demand and supply, and fiscal stance shocks) signaling growing long-term global imbalances.

The fiscal stance shock accounts for 58% of public expenditure to GDP ratio fluctuations in the very short-term. It leads to a permanent contraction in employment (-0.84%), real activity (-0.5%) and to a permanent increase in the unemployment rate (0.73%). By being net of the shocks accounting for the state of the global business cycle (aggregate demand, labor demand and supply shocks), it is related to *excess* public expenditure dynamics. Finally, the core inflation shock accounts for 60% of nominal factor fluctuations in the very short-term, with a negative impact on employment (-0.3%, long-term) and real activity (-0.24%, short-term), and a positive effect on the unemployment rate (0.19%, short-term) and real wages (0.4%, long-term); it also triggers a permanent increase in the real interest rate (0.05%).

Financial shocks

On the financial side, seventeen structural shocks are identified, namely an *excess liquidity* shock, a set of *speculative asset price (portfolio)* shocks (i.e. a *real stock market prices* shock, a *real housing prices* shock, a *real gold price* shock and a *real non energy commodity price index* shock), an *US\$ exchange rate index* shock, a *risk-free rate* shock, two oil futures market speculative shocks (i.e. *Working's-T* and *futures basis* shocks), a set of *risk factors*

shocks measuring revisions in market expectations about future fundamentals (i.e. a *risk aversion* shock, *size*, *value*, *leverage*, *stocks' liquidity*, and *momentum* factor shocks), a *term spread* shock, and a *residual economic and financial fragility index* shock.

The excess liquidity shock accounts for 35% of excess liquidity fluctuations in the very short-term and leads to a permanent contraction in the real short-term interest rate (-0.07%), as well as in the real long-term interest rate (-0.03%, implied by the 0.04% increase in the term spread following the shock). Being contemporaneously orthogonal to macroeconomic, liquidity and interest rates shocks, the own real stock market, housing, gold, and non energy commodity price disturbances bear the interpretation of speculative asset price (portfolio) shocks; the latter account for 21%, 68%, 24% and 38% of real stock market, housing, non energy commodities index and gold price fluctuations in the very short-term, respectively. The US\$ exchange rate index shock accounts for 50% of the US\$ exchange rate index fluctuations in the very short-term. Due to the ordering, it is contemporaneously orthogonal to macroeconomic and liquidity/interest rate shocks, bearing therefore the interpretation of a purely financial shock. The risk-free rate shock accounts for 30% of short-term real interest rate fluctuations in the very short-term. Being net of the contemporaneous effect of macroeconomic and liquidity shocks, it may be interpreted in terms of a short-term bonds risk premium shock.

The oil futures market speculative shocks (i.e. the Working's-T and futures basis shocks) account for 55% (each) of Working's-T and futures basis fluctuations in the very short-term, respectively. Their interpretation in terms of oil futures market speculative shocks follows from their positive impact on both the oil futures and spot price, also affecting inventories at various horizons, in addition to being orthogonal to the set of macroeconomic and financial shocks driving flow and fundamental financial oil demand. Being contemporaneously orthogonal to macroeconomic, liquidity and interest rates shocks, the risk factors shocks measure revisions in market expectations about future fundamentals. The risk aversion, size, value, leverage, stocks' liquidity, and momentum factor shocks account for 60%, 54%, 56%, 35%, 51% and 54% of stock market volatility, size, value, momentum, stocks' liquidity and leverage factors fluctuations, respectively, in the very short-term. The term spread shock accounts for 64% of term spread fluctuations in the very short-term.

Finally, the economic and financial fragility index shock accounts for 15% of the economic and financial fragility index fluctuations in the very short-term. By being orthogonal to all the other disturbances considered in the model, it is interpreted as a *residual* fragility shock.

Table 1: Forecast error variance decomposition of the fragility index: contributions of each structural shock and of categories of structural shocks

Panel A: contribution of individual structural shocks																																	
	R	Pm	Pp	RM	E	U	Y	G	Fd	Td	N	W	C	L	SR	TS	H	X	FV	SMB	HML	MOM	PSL	LEV	WT	FB	INV	OP	OV	M	F	GD	FRA
0	4.4	0.2	0.0	0.0	4.6	0.0	8.0	0.1	3.2	1.4	1.2	6.1	1.6	0.0	0.2	0.2	1.6	0.8	15.8	0.1	13.9	1.5	0.0	0.0	0.1	5.0	0.9	0.1	2.7	10.6	0.2	0.6	15.0
2	3.6	0.7	0.5	1.7	5.7	1.4	5.4	0.9	4.0	0.9	0.8	2.4	3.7	0.2	3.4	0.2	1.1	0.4	6.4	0.5	16.2	2.3	2.2	0.3	0.1	5.3	0.5	0.9	4.8	9.7	0.1	1.1	12.7
4	3.1	1.9	0.5	1.3	4.9	1.1	5.2	0.8	4.0	1.7	0.8	3.2	3.8	1.5	5.0	0.3	1.7	0.7	4.8	0.5	15.7	1.9	3.2	0.3	0.1	4.1	0.8	0.8	3.7	7.9	0.3	0.8	13.5
6	3.2	5.3	0.4	1.1	6.0	1.0	4.1	1.9	4.9	1.3	0.6	3.4	3.1	1.8	3.7	0.4	2.9	0.6	4.2	4.0	12.8	1.3	4.2	0.3	0.1	2.9	1.4	0.6	3.0	6.0	0.9	0.6	12.2
8	2.5	9.6	0.5	0.8	6.3	1.1	2.9	2.7	4.2	1.2	0.5	2.5	3.0	1.3	2.6	0.6	3.9	0.7	3.1	7.3	11.1	1.0	4.3	0.4	0.2	2.4	1.8	0.5	3.0	5.4	1.2	0.4	11.2
12	1.9	13.1	1.4	0.9	6.2	1.1	2.1	3.8	3.5	0.9	0.5	1.7	3.0	1.2	1.8	0.8	4.3	0.9	2.1	8.8	9.2	0.7	4.1	0.5	0.3	1.9	2.3	0.4	3.0	5.0	1.3	0.3	11.0
20	2.0	16.4	1.6	0.9	5.2	1.2	1.4	3.9	2.9	0.6	0.4	1.4	3.4	1.0	1.3	1.0	4.1	1.0	1.4	9.8	8.5	0.5	4.3	0.5	0.3	1.5	2.6	0.3	2.9	4.9	1.3	0.2	11.2
40	2.2	20.2	1.8	0.7	4.5	1.3	0.8	3.3	2.8	0.3	0.2	1.5	4.1	1.0	0.9	0.9	3.8	0.7	0.8	9.9	8.4	0.3	4.6	0.4	0.3	1.3	2.5	0.3	2.9	4.6	1.3	0.1	11.1
Panel B: contribution of categories of shocks																																	
								MAC					FIN																				
	SUP	DEM	MAC	X	FIN	SPC	FRA	LM	Y	FT	N	W	MP	PA	RF																		
0	4.6	2.5	24.5	0.8	47.4	5.1	15.0	4.7	8.0	8.1	1.2	6.1	0.4	13.0	34.0																		
2	6.5	4.2	21.4	0.4	49.4	5.4	12.7	7.1	5.4	6.3	0.8	2.4	3.7	12.9	32.8																		
4	6.9	4.6	21.7	0.7	48.4	4.2	13.5	6.0	5.2	6.0	0.8	3.2	6.8	11.5	30.1																		
6	9.9	4.5	23.2	0.6	46.7	3.0	12.2	7.0	4.1	6.0	0.6	3.4	5.9	10.9	29.8																		
8	13.4	4.8	21.4	0.7	46.0	2.6	11.2	7.3	2.9	5.7	0.5	2.5	4.6	11.3	30.1																		
12	17.4	5.3	19.7	0.9	43.5	2.1	11.0	7.3	2.1	5.9	0.5	1.7	3.8	11.3	28.5																		
20	20.8	6.1	17.1	1.0	42.0	1.9	11.2	6.4	1.4	5.3	0.4	1.4	3.3	10.8	27.9																		
40	24.9	6.6	14.8	0.7	40.2	1.6	11.1	5.8	0.8	4.1	0.2	1.5	2.8	10.2	27.2																		

The table reports the forecast error variance decomposition for the fragility index at selected horizons (impact (0) and 2 to 40 quarters), relatively to the various structural shocks (Panel A): reserves (R), net negative production (Pm), net positive production (Pp), refineries margins (RM), labor supply (E), labor demand (U), aggregate demand (Y), fiscal stance (G), US fiscal deficit (Fd), US trade deficit (Td), core inflation (N), productivity (W), oil consumption (C), excess liquidity (L), risk-free rate (S), term spread (TS), real housing prices, (H), US\$ exchange rate index (X), risk aversion (FV), size factor (SMB), value factor (HML), momentum factor (MOM), stocks' liquidity factor (PSL), leverage factor (LEV), Working-T index (WT), futures basis (FB), inventories (INV), real oil price (OP), oil price volatility (OV), real non-energy commodity prices (M), real stock prices (F), real gold price (G), fragility (FRA). The contribution of various categories of shocks is also considered (Panel B), i.e. oil market supply side shocks (SUP: reserves, net negative and positive production, refinery margins), oil market demand side shocks (DEM: oil consumption, inventories), macroeconomic shocks (MAC: labor demand and supply, aggregate demand, fiscal stance, US fiscal and trade deficits, core inflation and productivity), US\$ exchange rate index shocks (X), financial shocks (FIN: excess liquidity, risk-free rate, term spread, housing prices, risk aversion, size, value, momentum, stock liquidity, leverage and factors, real oil price and nominal oil price volatility, real non-energy commodity prices, real stock prices, real gold prices), oil futures market speculative shocks (SPC: Working-T index, futures basis), fragility factor own shock (FRA). In the latter part of the panel, the contribution of macroeconomic and financial shocks is reported with reference to sub-categories of shocks, i.e. labor market shocks (LM: labor demand and supply), aggregate demand shocks (Y), deficits shocks (fiscal stance, US fiscal and trade deficits), core inflation shocks (N), productivity shocks (W), liquidity and interest rates shocks (MP: excess liquidity, risk-free rate, term spread), portfolio allocation shocks (PA: real housing prices, real non-energy commodity prices, real stock prices, real gold price, real oil price) and risk factors shocks (RF: nominal oil price volatility, risk aversion, size, value, momentum, stocks' liquidity and leverage factors).

Table 2: Historical decomposition of the US financial fragility index: contribution of various categories of shocks in selected episodes

	Panel A: categories of shocks									Panel B: sub categories of macroeconomic and financial shocks							
	SUP	DEM	MAC	X	FIN	SPC	OWN	MF	ACT	LM	Y	FT	N	W	MP	PA	RF
87(4)	0.04	0.01	-0.05	-0.02	0.30	0.07	0.02	0.25	0.36	-0.03	-0.03	0.02	-0.01	0.00	0.05	0.01	0.24
90(4)	0.16	0.07	-0.02	-0.03	0.01	0.06	0.03	-0.01	0.28	0.05	0.03	-0.08	-0.03	0.00	0.02	0.03	-0.04
98(4)	0.02	-0.02	-0.08	0.00	0.26	0.01	0.09	0.18	0.27	-0.04	-0.13	0.07	-0.01	0.03	0.03	0.01	0.23
00(2)	0.01	-0.01	0.03	-0.01	0.25	0.00	0.04	0.28	0.31	-0.02	0.06	-0.10	0.00	0.09	0.01	0.08	0.16
07(3)	0.07	-0.01	-0.04	0.04	0.14	0.06	-0.03	0.09	0.22	0.02	0.00	0.02	-0.02	-0.06	-0.06	0.07	0.13
07(4)	0.07	0.00	0.03	0.00	0.08	0.01	0.01	0.12	0.21	0.04	-0.05	0.05	0.00	-0.02	0.04	0.00	0.04
08(1)	-0.02	-0.02	0.08	0.02	-0.06	-0.04	-0.01	0.02	-0.04	-0.01	0.01	0.04	-0.03	0.06	0.07	-0.17	0.04
08(2)	-0.03	-0.01	-0.02	-0.01	0.11	-0.02	0.01	0.08	0.03	-0.01	0.03	-0.09	0.02	0.03	0.11	-0.06	0.06
08(3)	0.04	0.00	0.28	0.01	0.00	-0.02	-0.03	0.28	0.27	0.03	0.03	0.10	0.02	0.10	0.01	0.05	-0.06
08(4)	0.03	0.06	0.49	0.03	0.35	0.04	0.03	0.84	1.02	0.16	0.08	0.14	0.01	0.10	0.02	0.10	0.24
09(1)	-0.03	-0.04	-0.09	-0.04	-0.37	-0.01	-0.05	-0.47	-0.64	-0.03	0.01	-0.05	0.01	-0.02	-0.05	-0.09	-0.23
09(2)	-0.08	-0.02	-0.22	-0.04	-0.15	-0.02	-0.01	-0.37	-0.53	-0.04	-0.08	-0.09	0.03	-0.04	-0.12	-0.02	-0.01
09(3)	-0.02	-0.01	-0.33	-0.02	-0.19	0.01	-0.01	-0.52	-0.57	-0.16	-0.04	-0.06	0.01	-0.08	0.03	-0.06	-0.17
09(4)	-0.05	0.02	-0.17	-0.03	0.07	-0.03	-0.01	-0.10	-0.19	-0.08	-0.01	-0.04	-0.01	-0.03	-0.01	0.04	0.04
10(1)	0.01	0.01	-0.13	0.04	-0.07	0.01	0.00	-0.19	-0.13	-0.09	0.03	-0.06	-0.01	0.00	0.03	-0.02	-0.07
10(2)	0.07	-0.06	0.12	-0.01	0.08	-0.02	-0.01	0.19	0.16	-0.01	0.05	0.10	0.03	-0.07	0.04	-0.02	0.06
10(3)	0.02	-0.01	0.14	0.00	-0.14	-0.04	0.08	-0.01	0.03	0.04	0.02	0.04	-0.01	0.05	0.02	-0.04	-0.12

The table reports the historical decomposition (net of base prediction) for the fragility index in differences, in selected episodes over the period 1986-2010, showing the contribution of subsets of structural shocks. In Panel A structural disturbances are aggregated in the following categories: oil supply (SUP: reserves, net production changes, refinery margins), oil demand (DEM: oil consumption, inventories), macroeconomic variables (MAC: labor demand and supply, aggregate demand, fiscal stance, US fiscal deficit, US trade deficit, core inflation, productivity), US\$ exchange rate index (X), financial variables (FIN: excess liquidity, risk-free rate, term spread, real housing prices; risk aversion, size, value, momentum, stocks' liquidity and leverage factors; real commodity prices, real stock prices, real oil price and nominal oil price volatility), macro-finance shocks (MF: MAC+FIN), excess speculation in the oil futures market (SPC: Working-T index, futures basis), the own fragility shock (OWN); finally, ACT denotes actual changes in the fragility index. In Panel B, the contribution of macroeconomic and financial shocks is reported with reference to sub-categories of shocks, i.e. labor market shocks (LM: labor demand and supply), aggregate demand shocks (Y), deficits shocks (fiscal stance, US fiscal and trade deficits), core inflation shocks (N), productivity shocks (W), liquidity and interest rates shocks (MP: excess liquidity, risk-free rate, term spread), portfolio allocation shocks (PA: real housing prices, real non-energy commodity prices, real stock prices, real gold price, real oil price) and risk factors shocks (RF: nominal oil price volatility, risk aversion, size, value, momentum, stocks' liquidity and leverage factors).

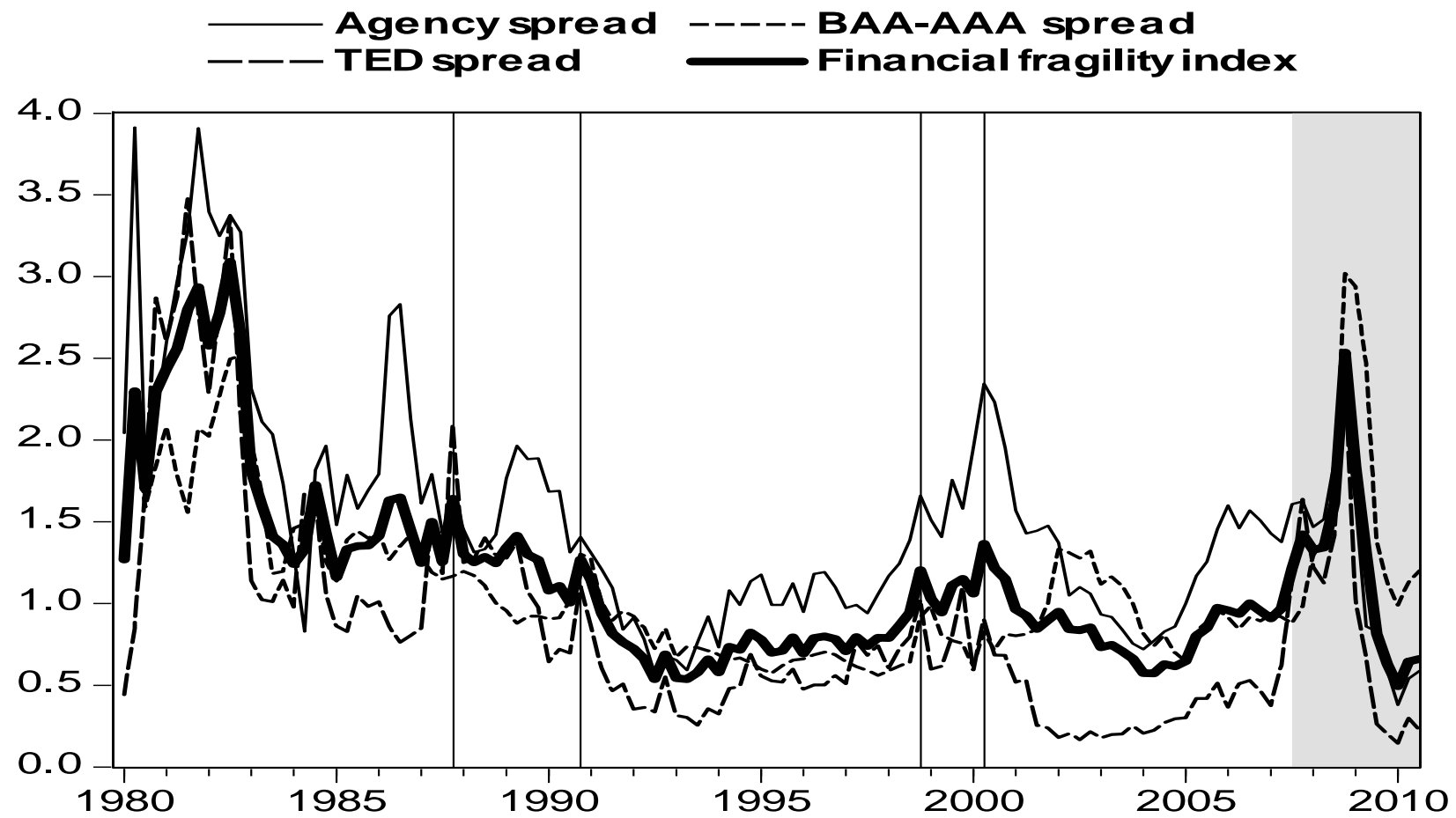


Figure 1: The AGENCY, TED and BAA-AAA spread, and the US financial fragility index (1980-2010).

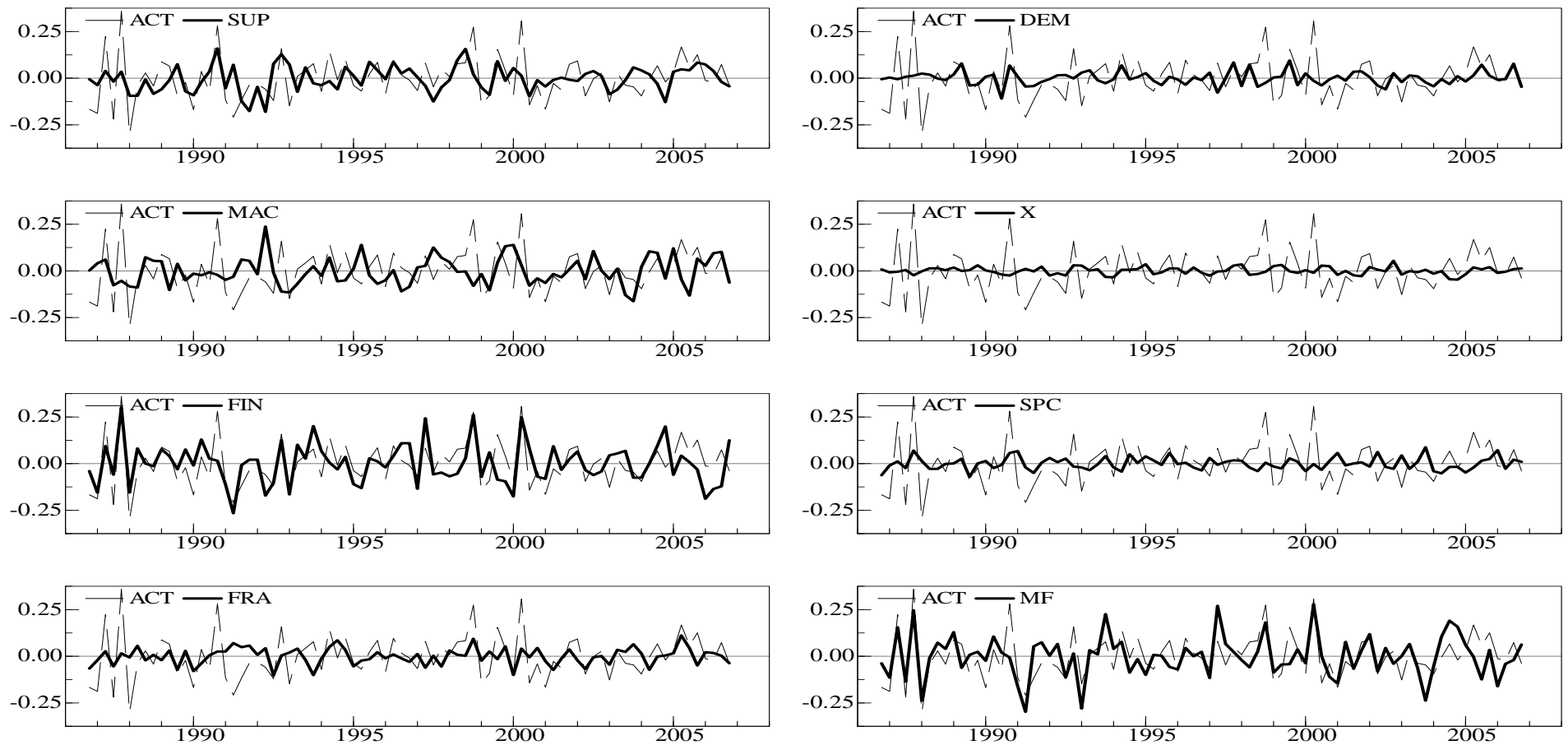


Figure 2: Historical decomposition for quarterly changes in the fragility index (ACT, dashed line); 1986:4-2006:4. Contributions from the oil market supply side shocks (SUP: reserves, net negative and positive production, refinery margins), oil market demand shocks (oil consumption, inventories), macroeconomic shocks (MAC: labor demand and supply, aggregate demand, fiscal stance, US fiscal and trade deficits, core inflation and productivity), financial shocks (FIN: excess liquidity, risk-free rate, term spread, housing prices; risk aversion, size, value, momentum, stocks' liquidity and leverage factors; real oil price and nominal oil price volatility, real non-energy commodity prices, real stock prices, real gold prices), macro-financial shocks (MF: MAC+FIN), US\$ exchange rate index shocks (X), oil futures market speculative shocks (SPC: Working-T index, futures basis), fragility factor own shock (FRA).

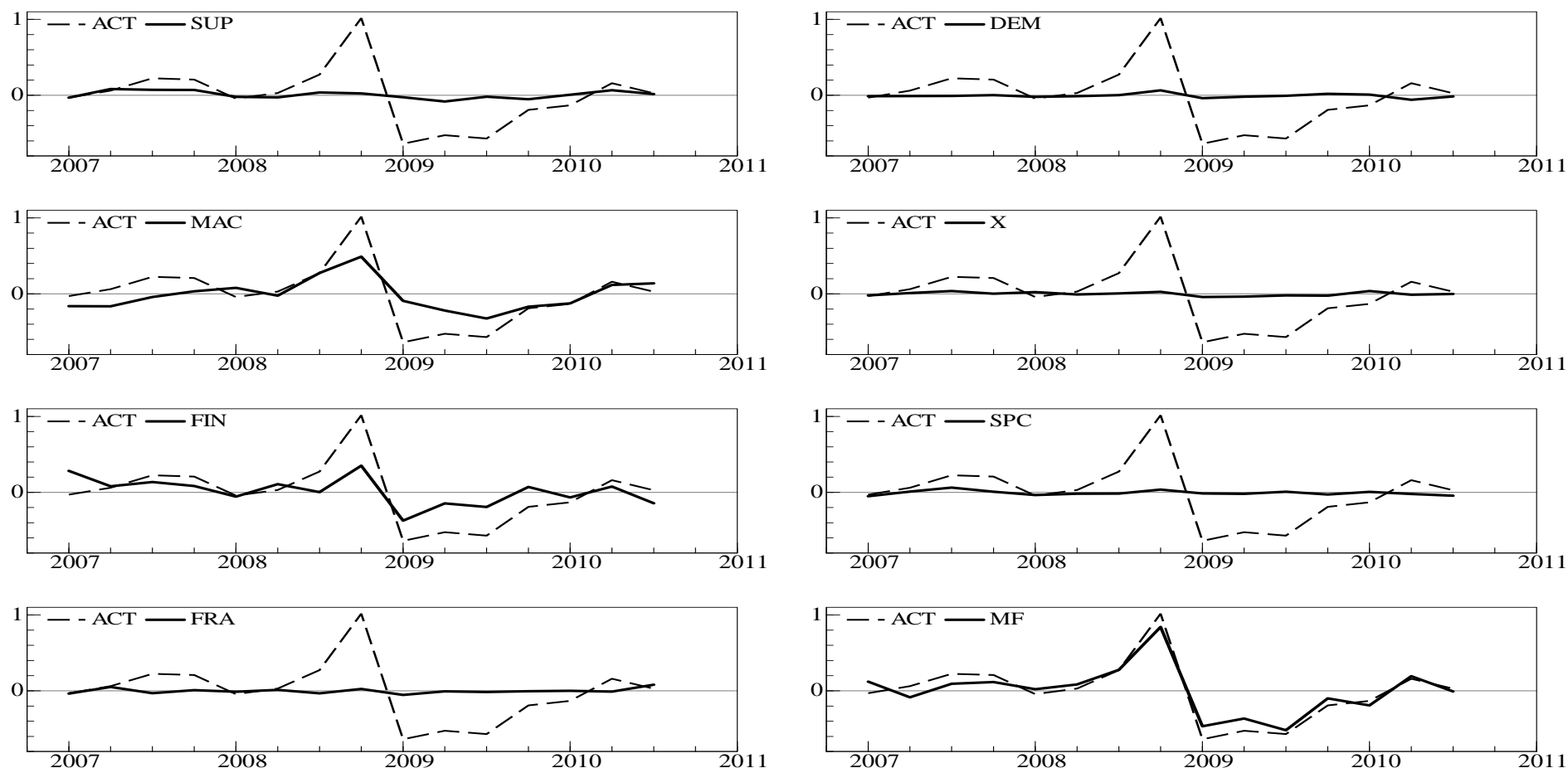


Figure 3: Historical decomposition for quarterly changes in the fragility index (ACT, dashed line); 2007:1-2010:3. Contributions from the oil market supply side shocks (SUP: reserves, net negative and positive production, refinery margins), oil market demand shocks (oil consumption, inventories), macroeconomic shocks (MAC: labor demand and supply, aggregate demand, fiscal stance, US fiscal and trade deficits, core inflation and productivity), financial shocks (FIN: excess liquidity, risk-free rate, term spread, housing prices; risk aversion, size, value, momentum, stocks' liquidity and leverage factors; real oil price and nominal oil price volatility, real non-energy commodity prices, real stock prices, real gold prices), macro-financial shocks (MF: MAC+FIN), US\$ exchange rate index shocks (X), oil futures market speculative shocks (SPC: Working-T index, futures basis), fragility factor own shock (FRA).

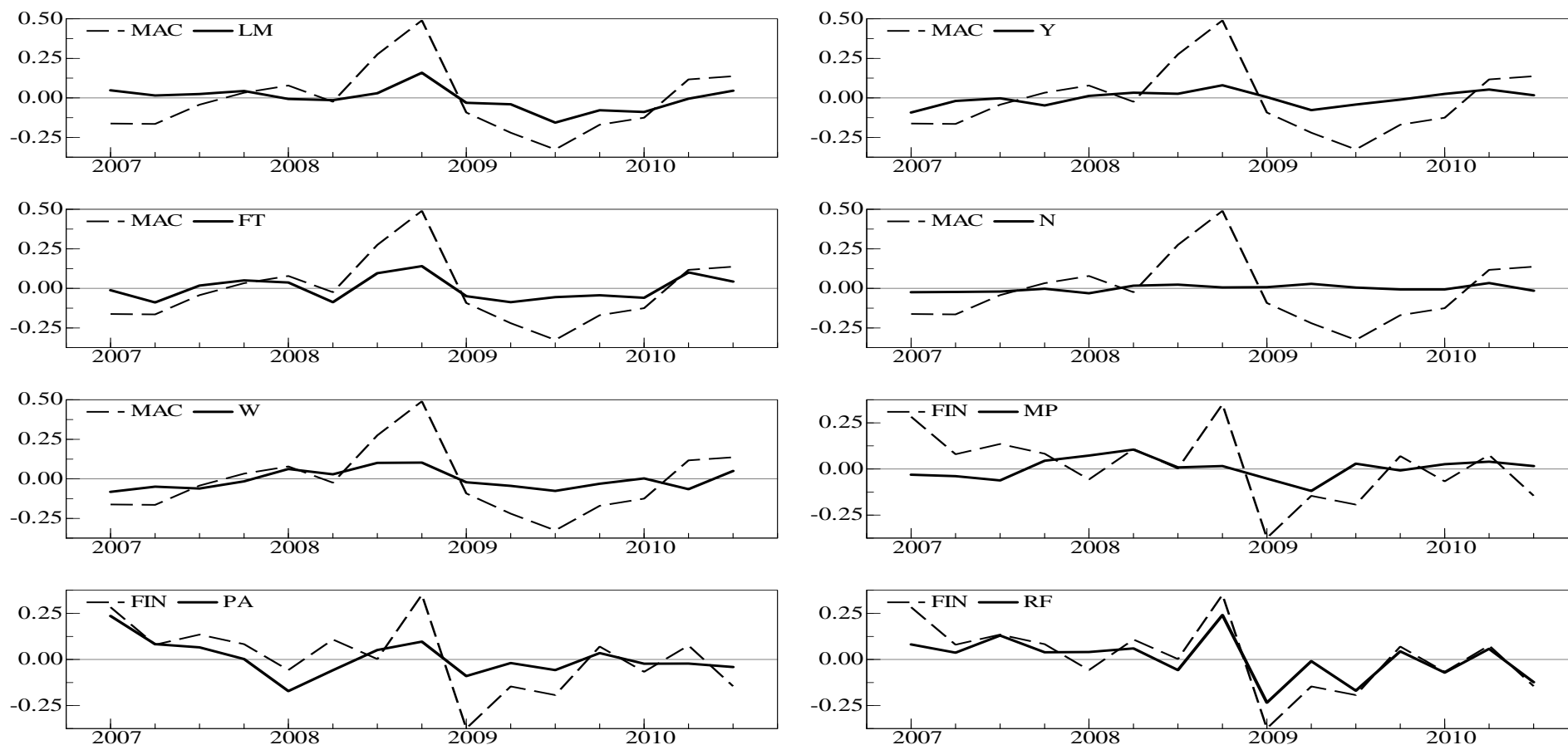


Figure 4: Historical decomposition for quarterly changes in the fragility index, 2007:1-2010:3. Contributions from the oil market supply side shocks (SUP: reserves, net negative and positive production, refinery margins), oil market demand shocks (oil consumption, inventories), macroeconomic shocks (MAC: labor demand and supply, aggregate demand, fiscal stance, US fiscal and trade deficits, core inflation and productivity), financial shocks (FIN: excess liquidity, risk-free rate, term spread, housing prices; risk aversion, size, value, momentum, stock liquidity and leverage factors; real oil price and nominal oil price volatility, real non-energy commodity prices, real stock prices, real gold prices), macro-financial shocks (MF: MAC+FIN), US\$ exchange rate index shocks (X), oil market speculative shocks (SPC: Working-T index, futures basis), fragility factor own shock (FRA).

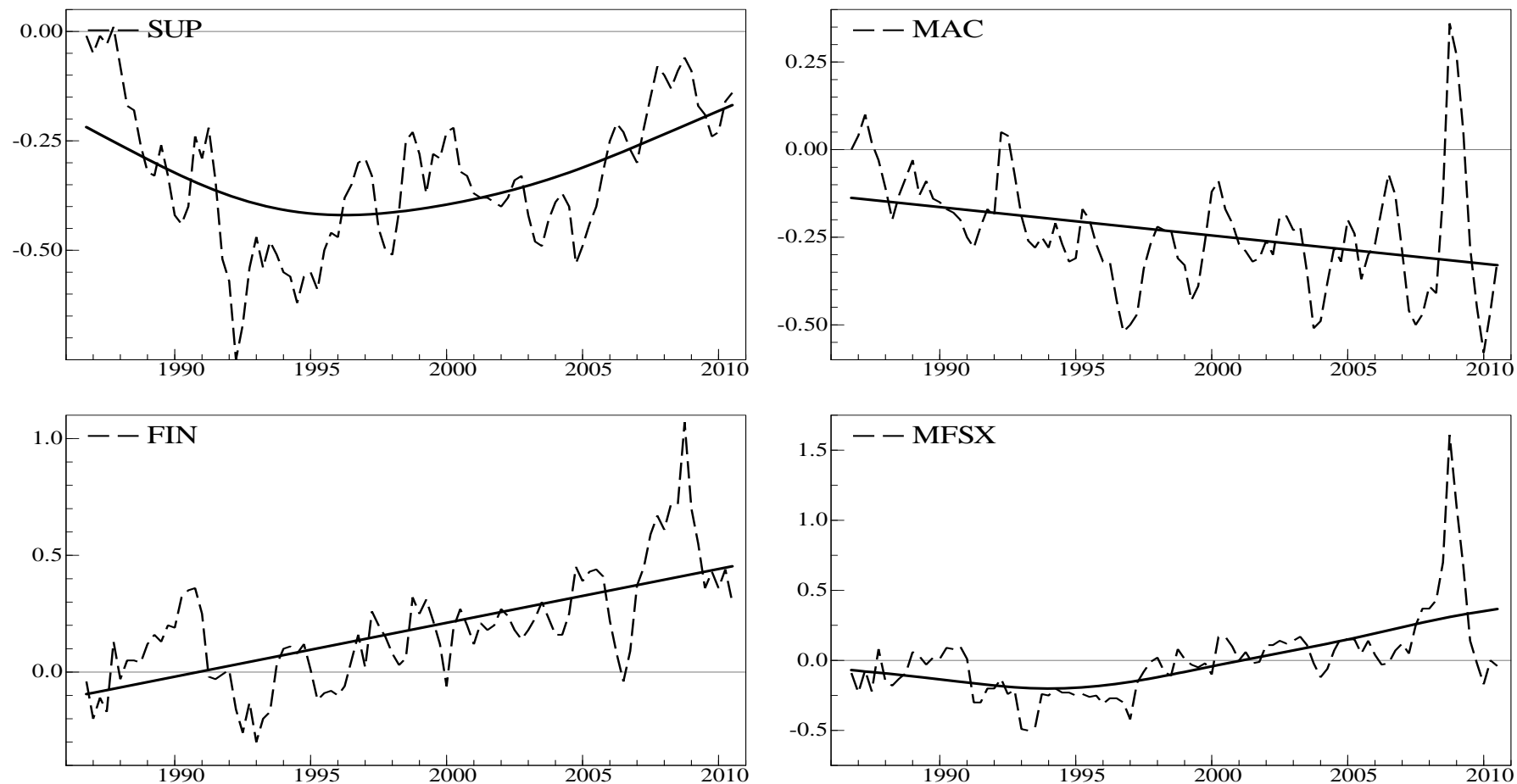


Figure 5: Historical decomposition of the fragility index (dashed line) with spline smoother (solid line); 1986:4-2010:3. Cumulative contributions from the oil market supply side shocks (SUP: reserves, net negative and positive production, refinery margins), macroeconomic shocks (MAC: labor demand and supply, aggregate demand, fiscal stance, US fiscal and trade deficits, core inflation and productivity), financial shocks (FIN: excess liquidity, risk-free rate, term spread, housing prices; risk aversion, size, value, momentum, stocks' liquidity and leverage factors; real oil price and nominal oil price volatility, real non-energy commodity prices, real stock prices, real gold prices), macro-financial shocks (MFSX: MAC+FIN+SPC+X; US\$ exchange rate index shocks (X), oil market speculative shocks (SPC: Working-T index, futures basis).