

AperTO - Archivio Istituzionale Open Access dell'Università di Torino

Rationale of mesenchymal stem cell therapy in kidney injury

This is the author's manuscript

Original Citation:

Availability:

This version is available <http://hdl.handle.net/2318/127684> since

Terms of use:

Open Access

Anyone can freely access the full text of works made available as "Open Access". Works made available under a Creative Commons license can be used according to the terms and conditions of said license. Use of all other works requires consent of the right holder (author or publisher) if not exempted from copyright protection by the applicable law.

(Article begins on next page)



UNIVERSITÀ DEGLI STUDI DI TORINO

This is an author version of the contribution published on:

Questa è la versione dell'autore dell'opera:

*[American Journal of Kidney Diseases, 61(2), 2013, DOI :
10.1053/j.ajkd.2012.05.027]*

The definitive version is available at:

La versione definitiva è disponibile alla URL:

[<http://www.sciencedirect.com/science/article/pii/S0272638612010554?via=ihub>]

Rationale of Mesenchymal Stem Cell Therapy in Kidney Injury

Vincenzo Cantaluppi, MD, Luigi Biancone, MD, Alessandro Quercia, MD, Maria Chiara Deregibus, MD, Giuseppe Segoloni, MD, Giovanni Camussi, MD
Corresponding author contact information, E-mail the corresponding author

Numerous preclinical and clinical studies suggest that mesenchymal stem cells, also known as multipotent mesenchymal stromal cells (MSCs), may improve pathologic conditions involving different organs. These beneficial effects initially were ascribed to the differentiation of MSCs into organ parenchymal cells. However, at least in the kidney, this is a very rare event and the kidney-protective effects of MSCs have been attributed mainly to paracrine mechanisms. MSCs release a number of trophic, anti-inflammatory, and immune-modulatory factors that may limit kidney injury and favor recovery. In this article, we provide an overview of the biologic activities of MSCs that may be relevant for the treatment of kidney injury in the context of a case vignette concerning a patient at high immunologic risk who underwent a second kidney transplantation followed by the development of ischemia-reperfusion injury and acute allograft rejection. We discuss the possible beneficial effect of MSC treatment in the light of preclinical and clinical data supporting the regenerative and immunomodulatory potential of MSCs.

Background

Tissue damage with loss of parenchymal cells is a common final outcome of different pathologic conditions. The process of repair tends to counteract the loss of parenchymal cells and replace dead cells. However, in the kidney, this process frequently is hampered by evolution to fibrosis and long-term loss of function.¹ Therapeutic strategies to optimize the repair therefore should inhibit the mechanisms involved in cellular loss and stimulate the proliferation of parenchymal cells.¹ In the context of kidney transplantation, several immunologic and nonimmunologic factors contribute to the loss of transplant function.² and ³ Among these factors, delayed graft function (DGF)⁴ and ⁵ due to ischemia-reperfusion injury, T-cell-mediated rejection,⁶ and ⁷ and antibody-mediated rejection^{8, 9} and ¹⁰ are recognized to significantly affect long-term allograft survival.

Bone marrow-derived stem cells have been proposed as an appealing therapeutic approach to avoid or at least limit allograft injury.¹¹ In particular, mesenchymal stem cells, cautiously renamed multipotent mesenchymal stromal cells (MSCs) by the International Society for Cellular Therapy,¹² have garnered great interest for their regenerative and immunomodulatory properties, mainly due to the release of paracrine factors.¹³

Case Vignette

A 46-year-old man with dialysis-treated end-stage renal disease (1986-1988, peritoneal dialysis; 1988-1989, hemodialysis) secondary to vesicoureteral reflux received a first kidney transplant from a deceased donor in 1989 (Box 1). T-Cell-mediated rejection was followed by the development of chronic transplant glomerulopathy, severe interstitial fibrosis, and vascular damage, and the patient experienced a progressive deterioration in kidney function and fluid overload. In 2007, he returned to hemodialysis therapy. In July 2011, he underwent a second kidney transplantation in the presence of a heightened immunologic profile with different subsets of anti-HLA antibodies (anti-HLA-A1, A2, A3, A9, A10, A11, A28, A36, A80; anti-HLA-B13, B27, B37, B40, B44, B47, B57; and anti-HLA-DR3-DR13) and panel-reactive antibody level of 97%. He received immunosuppressive therapy with basiliximab, 20 mg, at days 0 and 4; tacrolimus, 0.2 mg/kg, daily; mycophenolate mofetil, 1 g, twice daily; and steroids. In the first days after transplantation, a clinical picture of DGF characterized by oliguria and increase in serum creatinine level was observed, and dialysis was performed on days 1, 2, 3, and 5. Kidney biopsy showed tubular necrosis due to ischemic

damage. In the following days, urine output increased and serum creatinine level decreased. However, at day 12 posttransplantation, urine output again decreased and serum creatinine level increased. For this reason, he underwent a second biopsy showing the presence of T-cell-mediated rejection in association with congestion of tubulointerstitial and glomerular capillaries and mild positivity for C4d staining. He was treated with thymoglobulin (100 mg daily for a total of 1.1 g), withdrawal of mycophenolate mofetil therapy, and decreasing blood levels of tacrolimus. Kidney function improved and the patient was discharged 36 days after transplantation (serum creatinine, 2.4 mg/dL, corresponding to estimated glomerular filtration rate of 36 mL/min/1.73 m² determined by the 4-variable Modification of Diet in Renal [MDRD] Study equation) on treatment with tacrolimus, mycophenolate mofetil, and steroids.

Box 1.

Clinical Course of the Patient Described in the Case Vignette

1986 – ESRD due to vesicoureteral reflux: start of peritoneal dialysis

1988 – Switch to hemodialysis

1989 – First kidney transplantation

1989 – T-cell-mediated rejection

1990 – Development of chronic transplant glomerulopathy

2004 – Progressive deterioration of kidney function

2007 – Fluid overload and return to hemodialysis (eGFR = 9 mL/min/1.73 m²)

2011

July

– Second transplantation (anti-HLA antibody serum titer, 97%); immunosuppressive therapy: basiliximab, tacrolimus, mycophenolate mofetil, and steroids

– Delayed graft function: need for dialysis at days 1, 2, 3, and 5 after transplantation; kidney biopsy with tubular necrosis due to ischemic damage

– Serum creatinine increases to 7.54 mg/dL, corresponding to eGFR decrease to 6 mL/min/1.73 m²

Aug

– Second kidney biopsy: T-cell-mediated rejection, mildly positive C4d staining; start thymoglobulin

– Discharge 36 days after transplantation with serum creatinine of 2.4 mg/dL (eGFR, 36 mL/min/1.73 m²); treated with tacrolimus, mycophenolate mofetil, and steroids

2012

Jan

– Stable kidney function (serum creatinine, 2.3 mg/dL; eGFR, 39 mL/min/1.73 m²).

Note: Conversion factor for serum creatinine in mg/dL to $\mu\text{mol/L}$, $\times 88.4$.

Abbreviations: eGFR, estimated glomerular filtration rate; ESRD, end-stage renal disease.

Pathogenesis

DGF, a form of acute kidney injury (AKI), usually is defined as the need for dialysis in the first week after transplantation.^{4, 5 and 14} The incidence of DGF ranges from 2%-50% in kidney transplants from deceased donors, with the variation associated with the transplantation center. In

contrast, DGF has a lower incidence in living donor transplants, likely due to less ischemia-reperfusion injury (5%-15%).¹⁵ Although many factors may be responsible for DGF (urinary obstructions, artery/vein thrombosis, early acute rejection, drug nephrotoxicity, viral infections, volume depletion, etc), ischemia-reperfusion injury is known to contribute to the delay of cellular regeneration and functional recovery of grafted kidneys.⁴ and ⁵ The increase in cold ischemia time is considered the major determinant of DGF.^{5, 15} and ¹⁶ In addition, DGF may increase allograft immunogenicity, with a consequent increased risk of acute rejection and early occurrence of chronic allograft nephropathy.⁵ and ¹⁷ Several studies reported an association between DGF and decreased transplant survival.⁴ Others found a correlation of DGF with decreased transplant survival only when associated with acute rejection.⁴ and ¹⁸ These considerations are strengthened by changing clinical scenarios in kidney transplantation over recent years.¹⁷ Elderly patients increasingly are being considered for kidney transplantation.¹⁹ On this basis, several transplantation programs using non-heart-beating donors and in particular suboptimal deceased donors have been developed.¹⁹ and ²⁰ Unfortunately, kidneys from such donors are exposed to increased ischemic injury and drug nephrotoxicity that deeply influence their regenerative potential and long-term transplant survival.¹⁹ and ²⁰

The cellular and molecular mechanisms involved in tissue damage after kidney ischemia-reperfusion injury have been studied extensively.¹ and ¹⁶ Ischemia can activate a complex sequence of events (release of oxygen free radicals, increased expression of major histocompatibility complex class I and II antigens, endothelial activation with consequent cytokine release, etc)²¹ that sustain kidney injury and favor DGF.¹⁶ and ²¹ Tubular epithelial cells are the main target of hypoxia within the kidney.¹ and ¹⁶ Ischemia leads to the loss of tubular cell polarity and cytoskeleton and brush-border integrity, leading to mislocalization of molecules usually expressed at the apical/basolateral membrane or tight junctions.¹ and ²² These events are responsible for the functional impairment of tubules that are not able to preserve distinct fluid-filled compartments with precise electrolyte concentrations.²²

In the presence of a sustained ischemic injury, tubular cells not only show functional impairment, but also undergo necrosis and apoptosis through activation of the death receptor (tumor necrosis factor/tumor necrosis factor receptor and Fas/Fas-ligand) and the mitochondrial (the apoptosis regulator Bcl-2 family members) pathways.²³ In the meantime, transplant metabolism shifts from an aerobic to anaerobic state, with consequent accumulation of lactate and oxygen free radicals that lead to the release of proinflammatory cytokines and activation of innate immunity.²¹

The final stage of ischemic injury occurs during the reperfusion period, characterized by reoxygenation, production of adenosine triphosphate, and generation of high concentrations of radical oxidants that cause hyperoxidation of cell membranes and synthesis of different types of chemokines.^{16, 21, 22} and ²³ Moreover, different adhesion and antigenic molecules are upregulated on tubular cells, favoring T-lymphocyte adhesion.²¹ Tubular cells are immunologically active and in the presence of an inflammatory state may express surface adhesion molecules, chemokines, and costimulatory molecules such as CD40, able to directly bind to CD40-ligand present on activated T cells.²³ and ²⁴ These events may lead to amplification of the immune response and recruitment and activation of other inflammatory cells able to perpetuate tissue injury.²¹ and ²⁴ Apart from its effects on tubular cells, ischemic injury also is known to affect the function and survival of endothelial cells within the kidney.²⁴ Microvascular injury is one of the hallmarks of ischemia and is responsible for the extension phase of AKI, which involves enhanced coagulation and adhesion of inflammatory cells.²⁴ Ischemia-reperfusion injury can be worsened by the nephrotoxic effect of immunosuppressive drugs such as calcineurin inhibitors, tacrolimus, and cyclosporine.²⁵ The restoration of kidney function after DGF is related to replacement of necrotic cells with functional tubular epithelium.^{5, 26} and ²⁷ Surviving tubular cells are able to

dedifferentiate, expressing mesenchymal (vimentin) and embryonic (Pax-2) markers; proliferate; migrate to cover the denuded basal membrane; and finally redifferentiate, restoring polarity and epithelial integrity to the cell.^{5, 26 and 27} These mechanisms are orchestrated by a series of growth factors able to promote tubular cell proliferation.^{23, 26 and 27}

Triggering of the immune response against the allograft is based on antigen presentation to T lymphocytes by different cell types.²⁸ Cells expressing class II HLA antigen molecules on their surface, including B cells, dendritic cells, and macrophages, may operate as professional antigen-presenting cells able to activate naive or memory T cells.^{28 and 29} Of interest, the existence of biologically active resident dendritic cells has been demonstrated within the kidney.^{28 and 29} Kidney dendritic cells may initiate allograft rejection by direct antigen presentation to infiltrating T cells.^{28 and 29} Moreover, recent investigations have shown a key role for innate immunity in the triggering of the adaptive immune response.²⁸ The presence of an inflammatory microenvironment created by different causes may induce the maturation of kidney dendritic cells, allowing antigen presentation to activated T cells.^{28 and 29} Moreover, further studies showed that an influx of myeloid and plasmacytoid dendritic cells is a hallmark of allograft rejection that correlates with the development of tubular atrophy and interstitial fibrosis.^{28, 29 and 30} Tubular epithelial cells may deeply influence the biological behavior of infiltrating T cells because they may express class II HLA antigen and costimulatory molecules such as CD40, B7-H1, and inducible costimulator ligand.³⁰ Furthermore, allorecognition also can occur through indirect T-cell-antigen presentation of HLA antigen molecules by antigen-presenting cells.^{28, 29 and 30} Regulatory T cells originating from the thymus or from T-cell conversion in the periphery may counteract the effector T cells.^{31 and 32} Recent studies showed a critical function of CD4⁺CD25⁺Foxp3⁺ regulatory T cells in the mechanisms of induction of transplant tolerance.^{31 and 32}

Recent studies have highlighted the role of humoral rejection in the acute and chronic loss of function of kidney transplants.³³ Humoral rejection is mediated by activation of different cell types, including B cells, plasma cells, and plasmoblasts, that may produce different classes of alloantibodies.^{10 and 33} In particular, immunoglobulin M (IgM) and IgG may activate the classical pathway of the complement system.¹⁰ Antibody-mediated rejection is recognized at present as the preeminent mechanism of loss of kidney transplant and is defined as a syndrome characterized by transplant dysfunction, microvascular damage (glomerulitis, capillaritis, and microthrombi formation) in the presence of donor-specific anti-HLA antibodies in the circulation and C4d deposition in peritubular capillaries.³⁴ In antibody-mediated rejection, after antibody activation and triggering of the complement cascade, endothelial cells upregulate the expression of adhesion molecules, induce a procoagulant state, and finally undergo apoptosis, or programmed cell death.³⁴ Recent studies show the involvement of natural killer cells in antibody-mediated rejection through the release of cytotoxic granules.³⁵

Recent Advances

New MSC-Based Therapeutic Perspectives

Could a patient with DGF and acute rejection benefit from treatment with MSCs? Numerous preclinical and clinical studies provide evidence that MSCs ameliorate different organ pathologic conditions by modulating tissue regeneration and immunity. MSCs belong to a rare population of cells of mesenchymal origin first isolated from bone marrow and then from several tissues and organs. Because MSCs do not express specific cell markers, the Mesenchymal and Tissue Stem Cell Committee of the International Society for Cellular Therapy has suggested the following minimal criteria to define human MSCs¹²: adherence to plastic; cell positivity for CD90, CD73, and CD105 and negativity for CD34, CD14, CD45, CD19, CD79a, CD11b, and HLA-DR¹²; and in vitro osteo-, chondro-, and adipogenic differentiation capabilities. At molecular levels, it has been shown that

MSCs express 113 RNA transcripts and 17 proteins not expressed by the hematopoietic stem cells.³⁶ Also, the microRNA (miRNA) present may provide a cell signature.³⁷

The rationale for the use of MSCs in regenerative medicine is based on the following properties: (1) their ability to migrate to the site of injury; (2) the potential to differentiate in various mesenchymal tissues and, at least in vitro, into different cell lineages; (3) the ability to release factors that influence cell survival and proliferation; and (4) the modulation of immune response and inflammation. Are these properties applicable to kidney injury?

Migration of MSCs to the site of injury within the kidneys has been studied extensively. Using iron dextran–labeled MSCs that can be detected by magnetic resonance imaging, Lange et al³⁸ demonstrated accumulation in the cortex of the injured kidney. Tögel et al³⁹ and 40 showed early localization of MSCs in glomeruli and peritubular capillaries after ischemic AKI by 2-photon microscopy³⁹ and observed by bioluminescence in living animals prompt homing to the injured kidney after intra-arterial administration of MSCs.⁴⁰

The molecular mechanisms responsible for the recruitment of MSCs are only partially known (Fig 1). Although the chemokine receptor CXCR4 has low basal expression on the MSC surface,⁴¹ it has been suggested that its interaction with stromal derived factor (SDF-1) may induce migration of MSCs to the site of injury in the brain.⁴² Tögel et al⁴³ demonstrated that SDF-1 favors homing of MSCs to the kidney after interaction with CXCR4, which is upregulated after kidney injury. The other SDF-1 receptor that could be involved in MSC migration is CXCR7.⁴⁴ It has been shown that CXCR4 and CXCR7 act independently to regulate migration.⁴⁵ In particular, CXCR7 is required to provide directional migration⁴⁶; however, knockdown of CXCR7 has a minimal effect on MSC migration.⁴⁴ The interaction between CD44 and hyaluronic acid also may guide MSCs to the site of injury. The relevance of this interaction for regulation of MSC migratory capacity has been shown both in vitro and in vivo.⁴⁷ We found that pre-incubation of MSCs with an anti-CD44 blocking antibody or soluble hyaluronic acid inhibited in vitro migration of MSCs and that in vivo MSCs from knockout mice failed to home to the damaged kidney.⁴⁸ The in vitro migration and in vivo homing of CD44 knockout MSCs was recapitulated after transfection with complementary DNA encoding wild-type CD44, but not with complementary DNA encoding a CD44 loss-of-function mutant that was unable to bind hyaluronic acid.⁴⁸

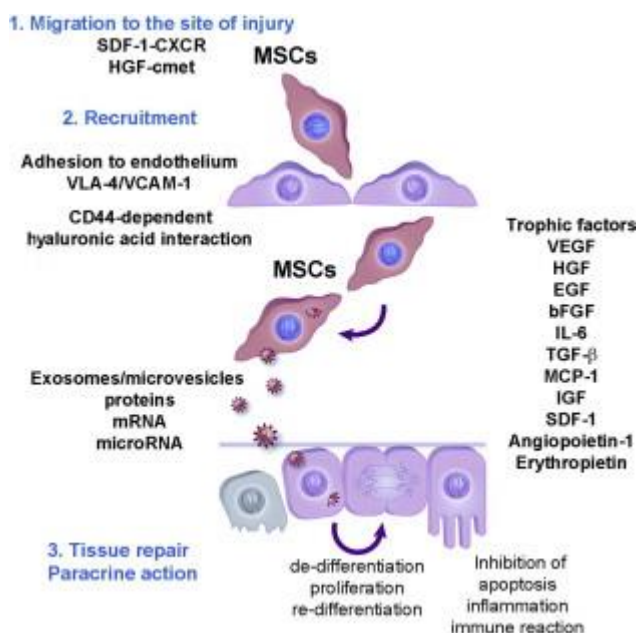


Figure 1.

Schematic representation of multipotent mesenchymal stromal cell (MSC) involvement in tubular repair. Three phases are represented. (1) Migration of MSCs to the site of injury after interaction between stromal derived factor 1 (SDF-1) ligand and CXCR chemokine receptor.⁴³ (2) Recruitment of MSCs to endothelium following the very late antigen 4 (VLA-4)/vascular cell adhesion molecule 1 (VCAM-1) interaction and the CD44-hyaluronic acid interaction.⁴³ (3) Paracrine action of MSCs favoring the proliferation of dedifferentiated epithelial cells surviving the injury by the release of exosomes/microvesicles that may reprogram the injured cells by delivering messenger RNAs (mRNAs) and microRNAs that induce the dedifferentiation.²³ The paracrine action also involves the production by MSCs of trophic factors, such as vascular endothelial growth factor (VEGF), basic fibroblast growth factor (bFGF), interleukin 6 (IL-6), monocyte chemoattractant protein 1 (MCP-1), hepatocyte growth factor (HGF), transforming growth factor β (TGF- β), epidermal growth factor (EGF), insulin-like growth factor (IGF), SDF-1, angiopoietin 1, macrophage inflammatory protein, keratinocyte growth factor, and erythropoietin.^{13 49 and 59} The cell cycle re-entry of the tissue-injured cells favors tissue repair.

After being localized in the kidney, do MSCs contribute to tissue repair by a direct substitution of dead cells or a mechanism of protection? This point has been debated extensively. *In vitro*, MSCs have the potential, after appropriate stimulation, to transdifferentiate into different cell lines, including epithelial and endothelial cells. It is not clear if this also may occur *in vivo*.

After kidney injury, it has been shown that bone marrow–derived stem cells and kidney resident stem cells may participate in kidney repair. However, it is widely accepted that the beneficial effect of bone marrow–derived stem cells in AKI is due to the generation of an environment that favors the proliferation of dedifferentiated epithelial cells surviving the injury rather than to direct transdifferentiation of stem cells into mature tissues.⁴⁹

Preclinical studies have consistently shown that administration of *ex vivo*–expanded MSCs accelerates recovery in AKI induced by a toxic agent^{48, 50, 51 and 52} or ischemia-reperfusion^{38, 39 and 53} and induces functional improvement in chronic kidney disease.⁵⁴ Although some tubular engraftment of MSCs was described in AKI induced by cisplatin^{50 and 51} and glycerol^{48 and 52} after systemic injection, this was not observed in the ischemia-reperfusion injury model of AKI.⁵³ Moreover, at least in the model of glycerol-induced AKI, after early localization of exogenous MSCs to peritubular capillaries and glomeruli,⁴⁸ most of them disappeared from the kidney after a few days.⁵⁵ Similarly, no evidence of permanent MSC engraftment in the kidney was obtained in ischemia-reperfusion AKI.⁵³ Thus, MSCs in the kidney function not by replacing kidney tubular cells, but by ameliorating injury by giving paracrine support to the repair process (Fig 1). This was confirmed in living animals by bioluminescence imaging, in which kidney localization of MSCs decreased after 24 hours.⁴⁰

By means of genetic fate-mapping techniques, it has been shown that kidney repair after ischemic tubular injury depends on proliferation of tubular epithelial cells.⁵⁶ Tubular regeneration has been ascribed to a mechanism defined as “epithelial-mesenchymal-epithelial cycling.”⁵⁷ The concept of a paracrine/endocrine action of MSCs in kidney tissue repair has been strengthened by the study of Bi et al⁵⁸ that showed that the conditioned medium of MSCs mimics the beneficial effects of the cells of origin. In addition, MSC homing does not seem to be an absolute requirement for therapy with MSCs because intraperitoneal administration of an MSC-conditioned medium to mice in which AKI has been induced by cisplatin is enough to reduce tubular cell apoptosis, increase tubular cell survival, and diminish kidney injury.⁵⁸ These data suggest that the renoprotective effect of MSCs arises from the factors they secrete. MSCs are able to produce a number of trophic factors, including vascular endothelial growth factor (VEGF), basic fibroblast growth factor (FGF-2), interleukin 6 (IL-6), monocyte chemoattractant protein 1, hepatocyte growth factor, transforming growth factor β , epidermal growth factor, insulin-like growth factor (IGF-1), SDF-1, angiopoietin 1,

keratinocyte growth factor, and erythropoietin.⁵⁹ In particular, it has been shown that the effects of MSCs on tubular repair partially depend on the production of IGF-1.⁶⁰ Tögel et al⁶¹ also reported that VEGF has a key role in the recovery of ischemia-reperfusion AKI because VEGF gene knockdown by short interfering RNA reduces the effectiveness of MSC infusion. Furthermore, other studies have indicated a possible role of MSCs in the mechanisms of angiogenesis and vascular remodeling through upregulation of prosurvival and proangiogenic factors such as VEGF- α , angiopoietins, IGF-1, and hepatocyte growth factor.⁵⁹ This may be relevant in the setting of kidney regeneration after ischemia-reperfusion injury because the damage of peritubular endothelial cells has been involved in an “extension phase” of ischemic AKI that is characterized by sustained tissue hypoxia and an inflammatory and procoagulant state triggered by endothelial cell injury.⁶²

MSCs have been shown to inhibit inflammatory and immune response through modulation of cytokine production, restraint of T-cell proliferation and dendritic cell maturation, modulation of B-cell function, and suppression of natural killer cell proliferation and cytotoxicity. The immunomodulatory action of MSCs is still a matter of extensive studies, but it is evident that both direct interactions of MSCs with dendritic or antigen-presenting cells and release of soluble factors are involved^{63, 64, 65, 66, 67} and ⁶⁸ (Fig 2). Based on these properties, MSCs have been investigated as a new therapy for several immune-mediated diseases, such as graft-versus-host disease,⁶⁹ and Crohn disease,⁷¹ and rejection in organ transplantation.⁷²

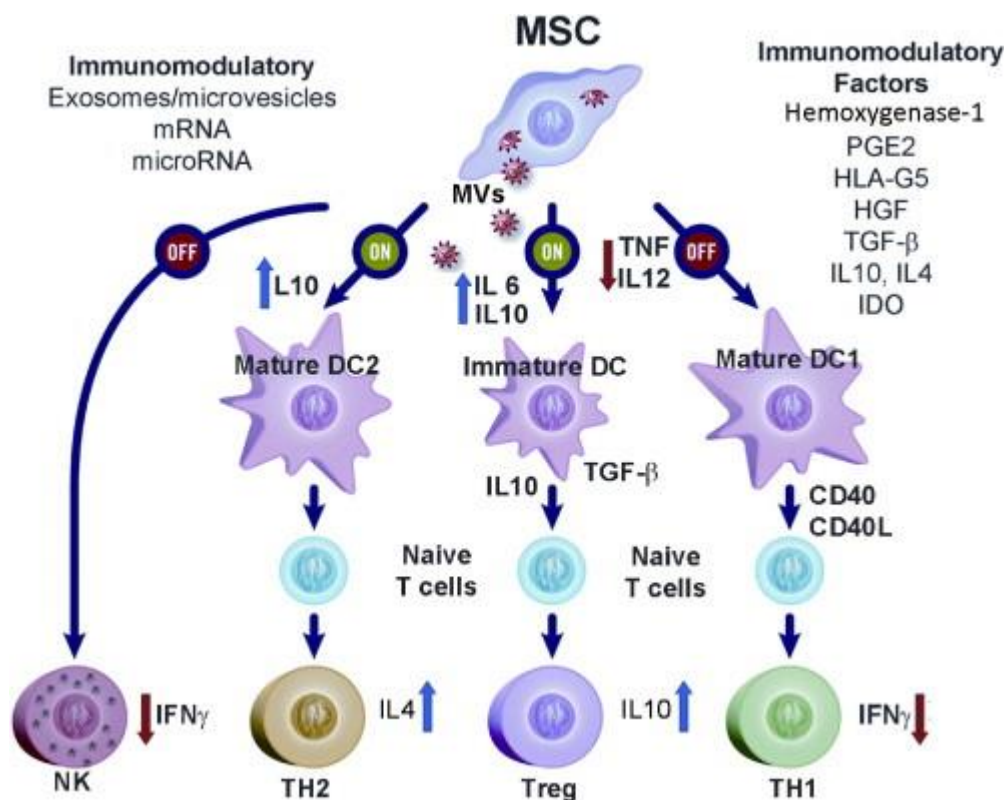


Figure 2.

Schematic representation of the multipotent mesenchymal stromal cell (MSC) modulatory action of immune response. MSCs inhibit immune response through modulation of cytokine production, suppression of T-cell proliferation and dendritic cell (DC) maturation, modulation of B-cell function, and suppression of natural killer cell (NK) proliferation and cytotoxicity.^{63-64, 65-66, 67} and ⁶⁸ MSCs, through inhibition of cyclin D2, maintain T cells in the G0-G1 phase of the cell cycle. In addition, MSCs modify the cytokine expression profile of DCs, naive and effector T cells, and NKs and increase the number of regulatory T cells (Tregs). The immunomodulatory effects of MSCs are sustained by the production of several factors, such as hemoxygenase 1, prostaglandin E₂ (PGE₂), human leukocyte antigen (HLA-G5), hepatocyte growth factor (HGF), transforming growth factor β (TGF- β), interleukin 10 (IL-10), IL-4, and indoleamine 2,3

deoxygenase (IDO). MSCs inhibit the upregulation of antigen presentation/costimulatory molecule expression, the ability to present defined antigens, and the capacity to migrate in response to chemokine CCL19 of DCs, at least in part due to MSC IL-6 secretion, which induces a less mature DC phenotype. TGF- β and PGE2 together with the cell contact also have a role in the expansion of Tregs from CD4⁺CD25⁺ precursors.⁶⁸ Moreover, human MSCs are able to secrete the soluble major histocompatibility complex (MHC) isoform of human HLA-G5 by a mechanism dependent on IL-10 and cell-to-cell contact. HLA-G may sustain Treg survival and its suppressor phenotype over time by favoring the expression of CD4⁺CD25^{high}FOXP3⁺ Treg cells. IDO, TGF- β , and PGE2 mediate MSC inhibition of NK functions.⁶⁹

Recent studies also suggest that extracellular vesicles may participate in the paracrine/endocrine network involved in the MSC biologic action. Extracellular vesicles released by MSCs after receptor-ligand interaction are internalized in target cells, transferring proteins, bioactive lipids, and surface receptors.⁷³ Extracellular vesicles released by MSCs also contain selected patterns of messenger RNA (mRNA) and miRNA⁷⁴ and ⁷⁵ and may be instrumental in the exchange of genetic information between cells.^{76, 77} and ⁷⁸ We demonstrated a horizontal transfer of mRNA through extracellular vesicles released from endothelial progenitors, with consequent activation of an angiogenic program in quiescent endothelial cells.⁷⁸ Extracellular vesicles derived from human MSCs mimic the beneficial effects of cells because they favor the recovery of AKI in severe combined immunodeficiency mice by inhibiting apoptosis and promoting kidney tubular epithelial cell proliferation⁷⁴ and ⁷⁹ (Fig 1). Administration of extracellular vesicles not only abated the acute injury, but also prevented the development of chronic kidney disease.⁷⁹ The mechanism was ascribed to the transfer of specific MSC-derived miRNA and mRNA.⁷⁴ and ⁷⁵ The cargo of mRNAs and miRNAs shuttled by stem cell-derived microvesicles potentially may trigger the regeneration of injured tissues and modulation of the activities of different cells of the immune system, finally allowing transplant tolerance.

Clinical Trials and Potential Risks of MSC Therapy

MSCs have been used safely in several phase 1 and 2 clinical trials aimed to treat a broad range of inflammatory and degenerative diseases (Table 1). In the transplantation setting, a model of cotransplanting MSCs with purified human pancreatic islets has been developed with the aim to protect islets from inflammatory and immune-mediated damage and improve transplant vascularization.⁸⁰

Table 1.
Nephrology-Related Trials of MSCs

Trial/Registration No.	Cell Type	Primary End Point	Design	Site
Induction therapy recipient of living kidney allograft; NCT00658073	Autologous MSCs	Safety and efficacy	Randomized, open-label, active control	Fuzhou General Hospital, China
Subclinical rejection; NCT00734396	Autologous MSCs	Safety and feasibility	Nonrandomized, open-label, uncontrolled	Leiden University Medical Center, the Netherlands
MSC under basiliximab; low-dose RATG; NCT00752479	Autologous MSCs	Safety and efficacy to induce kidney transplant tolerance	Randomized, open-label, active control	Mario Negri Institute, Italy
Chronic allograft nephropathy; NCT00659620	Autologous and allogeneic MSCs	Safety and efficacy	Treatment, open-label, historical control	Fuzhou General Hospital, China
Refractory systemic lupus erythematosus; NCT00698191	Allogeneic MSCs	Safety and efficacy	Treatment, nonrandomized, open-label	Nanjing Medical University, China
Cisplatin-induced AKI in patients with solid-organ cancers; NCT01275612	Allogeneic MSCs	Safety and efficacy	Treatment, open-label	Mario Negri Institute, Italy

Note: Listed are phase 1/2 trials available in [ClinicalTrials.gov](#).

Abbreviations: AKI, acute kidney injury; MSC, multipotent mesenchymal stromal cell; RATG, rabbit antithymocyte globulin induction.

Perico et al.⁸¹ recently reported a pilot study of safety and clinical feasibility of autologous MSC infusion in kidney transplantation. In this study, 2 recipients of kidneys from living related donors under rabbit antithymocyte globulin induction received MSCs on day 7 posttransplantation, demonstrating the feasibility of this approach, enlargement of regulatory T cells in the peripheral blood, and control of memory CD8⁺ T-cell function. However, in both patients, MSC infusion after kidney transplantation induced transplant dysfunction possibly related to intra-graft recruitment of granulocytes, raising concerns about its safety. More recently, results of a large randomized prospective study of autologous MSC induction in living related kidney transplants were presented.⁸² Patients were inoculated with marrow-derived autologous MSCs at kidney reperfusion and 2 weeks later. MSC induction with standard or low-maintenance immunosuppression was compared with standard anti-IL-2 receptor antibody induction. By enrolling 159 patients divided into 3 arms of 53 patients each, this study is characterized by unprecedented statistical power in the field of stem cell research in solid-organ transplantation. Results showed that MSC induction compared with anti-IL-2 receptor antibody induction led to a lower incidence of acute rejection, reduced risk of opportunistic infection, and improved kidney function at 1 year. In addition, kidney function recovered faster in both MSC groups, with increased estimated glomerular filtration rates during the first month after surgery compared with the control group, suggesting a positive impact on ischemia-reperfusion injury. This study may represent a milestone in the field, but long-term monitoring is needed to provide more data about the efficacy and safety of this approach. However, this study seems to override at least the concern of compromising kidney function after infusion raised by the study of Perico et al.⁸¹ The dissimilarity can be explained by differences in MSC preparations, such as MSC growth in the absence of platelet lysates that may contain proinflammatory factors, use of cell preparations without freeze preservation, the timing of infusion, and induction without rabbit antithymocyte globulin.

MSCs may interfere with the pathogenetic mechanisms involved in DGF, T-cell recognition, antibody-mediated rejection, and chronic allograft nephropathy. First, MSCs may stimulate proliferation of injured tubular cells after ischemia-reperfusion injury by directing a correct regeneration, thus inhibiting the development and progression of chronic allograft nephropathy. Second, MSCs can affect solid-organ allograft survival by interfering with several cell types of the immune system, such as T and B cells, dendritic cells, and natural killer cells. In the field of kidney diseases, MSCs also sparked great interest in the prevention of AKI and progression toward the final stages of chronic kidney disease. In a phase 1 clinical trial, the prevention and treatment of AKI with infusion of allogeneic MSCs have been evaluated.⁸³ The trial involved adult patients who underwent coronary artery bypass graft and/or major cardiac valve surgery; these patients then were infused through the suprarenal aorta with allogeneic MSCs. In analyzing outcomes in this group of patients, the investigators determined that postoperative suprarenal administration of allogeneic MSCs is feasible and safe. Moreover, efficacy data appeared promising, showing that MSC therapy prevented postoperative deterioration in kidney function and decreased durations of intensive care unit stay and hospitalization.

The ongoing clinical trials in the field of MSC-based therapies in AKI and solid-organ transplantation will be the platform for newly evolving pluripotent stem cell therapeutics in the near future. However, some notes of caution must be taken into account.⁸⁴ The heterogeneity of the MSC population may generate some difficulties in the evaluation of their potency in different studies. Some potential complications may arise from MSC administration into the bloodstream, such as pulmonary emboli or infarctions. The possibility of tumorigenesis or maldifferentiation also should be considered. Myocardial calcifications⁸⁵ and enhanced accumulation of fibroblasts and myofibroblasts in the lung have been reported⁸⁶ in preclinical studies. In the experimental model of

mesangioproliferative anti-Thy1.1 glomerulonephritis, after an early beneficial effect, MSCs were shown in the long term to maldifferentiate in adipocytes, favoring the development of chronic kidney disease.⁸⁷ However, in humans to date, no significant detrimental effects have been reported and MSC-based therapies raise significantly fewer concerns than embryonic stem cells or genetically modified cells. Additional studies are necessary to define the contexts in which MSCs could be beneficial in kidney disease and transplantation.

Summary

MSCs represent the new frontier for cell-based therapies of different inflammatory and degenerative diseases, and several phase 1 and 2 clinical trials currently are underway. The rationale for the use of MSCs is based on their ability to migrate to the sites of injury, differentiate into multiple cell types, and release trophic mediators and factors that modulate the immune and inflammatory response. In the field of kidney diseases, preclinical studies have suggested a beneficial effect of MSCs in various models of AKI and chronic kidney injury. Clinical trials with MSCs in AKI after cardiac surgery and kidney transplantation have been started. The mechanisms involved in regeneration are related mainly to the release of factors including extracellular vesicles from MSCs that promote tubular cell proliferation and survival.

The patient described in the case vignette experienced DGF due to ischemia-reperfusion injury and acute kidney transplant rejection. In light of preclinical and clinical studies, one might predict a beneficial effect of MSCs to prevent DGF or accelerate recovery from DGF. In addition, the anti-inflammatory and immunomodulatory properties of MSCs may interfere with the pathogenic mechanisms involved in kidney allograft rejection. In conclusion, MSCs may find potential therapeutic application in different pathologic conditions occurring in kidney transplant recipients.

Acknowledgements

We thank Danilo Bozzetto for the artwork.

Support: None.

Financial Disclosure: Drs Deregibus and Camussi have received funding for research from Fresenius Medical Care. Drs Cantaluppi, Deregibus, and Camussi are named inventors in related patents on microvesicles. Drs Biancone, Quercia, and Segoloni declare that they have no relevant financial interests.

References

1

J.V. Bonventre, L. Yang
Cellular pathophysiology of ischemic acute kidney injury
J Clin Invest, 121 (11) (2011), pp. 4210–4221

2

B. Schröppel, P.S. Heeger
Gazing into a crystal ball to predict kidney transplant outcome
J Clin Invest, 120 (6) (2010), pp. 1803–1806

3

J.M. Cecka
The UNOS Scientific Renal Transplant Registry—ten years of kidney transplants
Clin Transpl (1997), pp. 1–14

4

S.G. Yarlagadda, S.G. Coca, R.N. Formica Jr, E.D. Poggio, C.R. Parikh

Association between delayed graft function and allograft and patient survival: a systematic review and meta-analysis

Nephrol Dial Transplant, 24 (2009), pp. 1039–1047

5

N. Perico, D. Cattaneo, M.H. Sayegh, G. Remuzzi

Delayed graft function in kidney transplantation

Lancet, 364 (9447) (2004), pp. 1814–1827

6

B.J. Nankivell, S.I. Alexander

Rejection of the kidney allograft

N Engl J Med, 363 (15) (2010), pp. 1451–1462

7

P.F. Halloran

T-Cell mediated rejection of kidney transplants: a personal viewpoint

Am J Transplant, 10 (5) (2010), pp. 1126–1134

8

S. Mauiyyedi, R.B. Colvin

Humoral rejection in kidney transplantation: new concepts in diagnosis and treatment

Curr Opin Nephrol Hypertens, 11 (6) (2002), pp. 609–618

9

P.F. Halloran, A. Wadgymar, S. Ritchie, J. Falk, K. Solez, N.S. Srinivasa

The significance of the anti-class I antibody response: Clinical and pathologic features of anti-class I mediated rejection

Transplantation, 49 (1) (1990), pp. 85–91

10

R.B. Colvin, T. Hirohashi, A.B. Farris, F. Minnei, A.B. Collins, R.N. Smith

Emerging role of B cells in chronic allograft dysfunction

Kidney Int Suppl, 119 (2010), pp. S13–S17

11

C.J. Pino, H.D. Humes

Stem cell technology for the treatment of acute and chronic renal failure

Transl Res, 156 (3) (2010), pp. 161–168

12

M. Dominici, K. Le Blanc, I. Mueller et al.

Minimal criteria for defining multipotent mesenchymal stromal cells: The International Society for Cellular Therapy position statement

Cytotherapy, 8 (4) (2006), pp. 315–317

Article | PDF (74 K) | View Record in Scopus | Full Text via CrossRef | Cited By in Scopus (2754)

13

M. Gnechi, H. He, O.D. Liang et al.

Paracrine action accounts for marked protection of ischemic heart by Akt-modified mesenchymal stem cells

Nat Med, 11 (4) (2005), pp. 367–368

14

J. Moore, S. Shabir, S. Chand et al.

Assessing and comparing rival definitions of delayed renal allograft function for predicting subsequent graft failure

Transplantation, 90 (10) (2010), pp. 1113–1116

15

A. Tong, J.R. Chapman, G. Wong, J. De Bruijn, J.C. Craig

Screening and follow-up of living kidney donors: a systematic review of clinical practice guidelines
Transplantation, 92 (9) (2011), pp. 962–972

16

M. Kosieradzki, W. Rowiński

Ischemia/reperfusion injury in kidney transplantation: mechanisms and prevention

Transplant Proc, 40 (10) (2008), pp. 3279–3288

17

D.A. Shoskes, P.F. Halloran

Delayed graft function in renal transplantation: etiology, management and long-term significance

J Urol, 155 (6) (1996), pp. 1831–1840

(252)

18

M.L. Nicholson, T.J. Wheatley, T. Horsburgh, C.M. Edwards, P.S. Veitch, P.R. Bell

The relative influence of delayed graft function and acute rejection on renal transplant survival

Transpl Int, 9 (4) (1996), pp. 415–419

19

J. Pascual, J. Zamora, J.D. Pirsch

A systematic review of kidney transplantation from expanded criteria donors

Am J Kidney Dis, 52 (3) (2008), pp. 553–586

20

A.O. Ojo

Expanded criteria donors: process and outcomes

Semin Dial, 18 (6) (2005), pp. 463–468

21

D. Linfert, T. Chowdhry, H. Rabb

Lymphocytes and ischemia-reperfusion injury

Transplant Rev (Orlando), 23 (1) (2009), pp. 1–10

22

A.M. Sheridan, J.V. Bonventre

Cell biology and molecular mechanisms of injury in ischemic acute renal failure

Curr Opin Nephrol Hypertens, 9 (4) (2000), pp. 427–434

23

N.E. Kieran, H. Rabb

Immune responses in kidney preservation and reperfusion injury

J Investig Med, 52 (5) (2004), pp. 310–314

24

T.A. Sutton, C.J. Fisher, B.A. Molitoris

Microvascular endothelial injury and dysfunction during ischemic acute renal failure

Kidney Int, 62 (5) (2002), pp. 1539–1549

25

K. Krejci, T. Tichy, P. Bachleda, J. Zadrazil

Calcineurin inhibitor-induced renal allograft nephrotoxicity

Biomed Pap Med Fac Univ Palacky Olomouc Czech Repub, 154 (4) (2010), pp. 297–306

26

K.D. Liu, P.R. Brakeman

Renal repair and recovery

Crit Care Med, 36 (suppl 4) (2008), pp. S187–S192

27

M. Abbate, G. Remuzzi

Acceleration of recovery in acute renal failure: from cellular mechanisms of tubular repair to innovative targeted therapies

Ren Fail, 18 (3) (1996), pp. 377–388

28

C. Ponticelli

The mechanisms of acute transplant rejection revisited

J Nephrol, 25 (2) (2012), pp. 150–158

29

N.M. Rogers, T.J. Matthews, J.Y. Kausman, A.R. Kitching, P.T. Coates

Kidney dendritic cells: their role in homeostasis, inflammation and transplantation

Nephrology (Carlton), 14 (7) (2009), pp. 625–635

30

S. De Haij, A.M. Woltman, L.A. Trouw et al.

Renal tubular epithelial cells modulate T-cell responses via ICOS-L and B7-H1

Kidney Int, 68 (5) (2005), pp. 2091–2102

31

S.J. Knechtle

Immunoregulation and tolerance

Transplant Proc, 42 (suppl 9) (2010), pp. S13–S15

32

K.J. Wood

Regulatory T cells in transplantation

Transplant Proc, 43 (6) (2011), pp. 2135–2136

33

J.M. Mosquera Reboredo, E. Vázquez Martul

Diagnostic criteria of antibody-mediated rejection in kidney transplants

Nefrologia, 31 (4) (2011), pp. 382–391

34

B.A. Wasowska

Mechanisms involved in antibody- and complement-mediated allograft rejection

Immunol Res, 47 (1-3) (2010), pp. 25–44

35

L.G. Hidalgo, B. Sis, J. Sellares et al.

NK cell transcripts and NK cells in kidney biopsies from patients with donor specific antibodies: evidence for NK cell involvement in antibody mediated rejection

Am J Transplant, 10 (8) (2010), pp. 1812–1822

36

B. Delorme, J. Ringe, N. Gallay et al.

Specific plasma membrane protein phenotype of culture-amplified and native human bone marrow mesenchymal stem cells

Blood, 111 (5) (2008), pp. 2631–2635

37

F. Collino, S. Bruno, M.C. Deregibus, C. Tetta, G. Camussi

MicroRNAs and mesenchymal stem cells

Vitam Horm, 87 (2011), pp. 291–320

38

C. Lange, F. Tögel, H. Itrich et al.

Administered mesenchymal stem cells enhance recovery from ischemia/reperfusion-induced acute renal failure in rats

Kidney Int, 68 (4) (2005), pp. 1613–1617

39

F. Tögel, Z. Hu, K. Weiss, J. Isaac, C. Lange, C. Westenfelder

Administered mesenchymal stem cells protect against ischemic acute renal failure through differentiation-independent mechanisms
Am J Physiol Renal Physiol, 289 (1) (2005), pp. F31–F42

40

F. Tögel, Y. Yang, P. Zhang, Z. Hu, C. Westenfelder
Bioluminescence imaging to monitor the in vivo distribution of administered mesenchymal stem cells in acute kidney injury
Am J Physiol Renal Physiol, 295 (1) (2008), pp. F315–F321

41

R.F. Wynn, C.A. Hart, C. Corradi-Perini et al.
A small proportion of mesenchymal stem cells strongly expresses functionally active CXCR4 receptor capable of promoting migration to bone marrow
Blood, 104 (9) (2004), pp. 2643–2645

42

J.F. Ji, B.P. He, S.T. Dheen, S.S. Tay
Interactions of chemokines and chemokine receptors mediate the migration of mesenchymal stem cells to the impaired site in the brain after hypoglossal nerve injury
Stem Cells, 22 (3) (2004), pp. 415–427

43

F. Tögel, J. Isaac, Z. Hu, K. Weiss, C. Westenfelder
Renal SDF-1 signals mobilization and homing of CXCR4-positive cells to the kidney after ischemic injury
Kidney Int, 67 (5) (2005), pp. 1772–1784

44

H. Gao, W. Priebe, J. Glod, D. Banerjee
Activation of signal transducers and activators of transcription 3 and focal adhesion kinase by stromal cell-derived factor 1 is required for migration of human mesenchymal stem cells in response to tumor cell-conditioned medium
Stem Cells, 27 (4) (2009), pp. 857–865

45

G. Valentin, P. Haas, D. Gilmour
The chemokine SDF1a coordinates tissue migration through the spatially restricted activation of Cxcr7 and Cxcr4b
Curr Biol, 17 (12) (2007), pp. 1026–1031

46

C. Dambly-Chaudière, N. Cubedo, A. Ghysen
Control of cell migration in the development of the posterior lateral line: antagonistic interactions between the chemokine receptors CXCR4 and CXCR7/RDC1
BMC Dev Biol, 7 (2007), p. 23

47

H. Zhu, N. Mitsuhashi, A. Klein et al.
The role of the hyaluronan receptor CD44 in mesenchymal stem cell migration in the extracellular matrix
Stem Cells, 24 (4) (2006), pp. 928–935

48

M.B. Herrera, B. Bussolati, S. Bruno et al.
Exogenous mesenchymal stem cells localize to the kidney by means of CD44 following acute tubular injury
Kidney Int, 72 (4) (2007), pp. 430–441

49

- R.S. Lindoso, D.S. Araujo, J. Adão-Novaes et al.
Paracrine interaction between bone marrow-derived stem cells and renal epithelial cells
Cell Physiol Biochem, 28 (2) (2011), pp. 267–278
50
- M. Morigi, B. Imberti, C. Zoja et al.
Mesenchymal stem cells are renotropic, helping to repair the kidney and improve function in acute renal failure
J Am Soc Nephrol, 15 (7) (2004), pp. 1794–1804
51
- M. Morigi, M. Introna, B. Imberti et al.
Human bone marrow mesenchymal stem cells accelerate recovery of acute renal injury and prolong survival in mice
Stem Cells, 26 (8) (2008), pp. 2075–2082
52
- M.B. Herrera, B. Bussolati, S. Bruno, V. Fonsato, G.M. Romanazzi, G. Camussi
Mesenchymal stem cells contribute to the renal repair of acute tubular epithelial injury
Int J Mol Med, 14 (6) (2004), pp. 1035–1041
53
- J.S. Duffield, K.M. Park, L.L. Hsiao et al.
Restoration of tubular epithelial cells during repair of the postischemic kidney occurs independently of bone marrow-derived stem cells
J Clin Invest, 115 (7) (2005), pp. 1743–1755
54
- S. Choi, M. Park, J. Kim, S. Hwang, S. Park, Y. Lee
The role of mesenchymal stem cells in the functional improvement of chronic renal failure
Stem Cells Dev, 18 (3) (2009), pp. 521–529
55
- P.V. Hauser, R. De Fazio, S. Bruno et al.
Stem cells derived from human amniotic fluid contribute to acute kidney injury recovery
Am J Pathol, 177 (4) (2010), pp. 2011–2021
56
- B.D. Humphreys, M.T. Valerius, A. Kobayashi et al.
Intrinsic epithelial cells repair the kidney after injury
Cell Stem Cell, 2 (3) (2008), pp. 284–291
57
- S. Ishibe, L.G. Cantley
Epithelial-mesenchymal-epithelial cycling in kidney repair
Curr Opin Nephrol Hypertens, 17 (4) (2008), pp. 379–385
58
- B. Bi, R. Schmitt, M. Israilova, H. Nishio, L.G. Cantley
Stromal cells protect against acute tubular injury via an endocrine effect
J Am Soc Nephrol, 18 (9) (2007), pp. 2486–2496
59
- A.I. Caplan, J.E. Dennis
Mesenchymal stem cells as trophic mediators
J Cell Biochem, 98 (5) (2006), pp. 1076–1084
60
- B. Imberti, M. Morigi, S. Tomasoni et al.
Insulin-like growth factor-1 sustains stem cell mediated renal repair
J Am Soc Nephrol, 18 (11) (2007), pp. 2921–2928
61

F. Tögel, P. Zhang, Z. Hu, C. Westenfelder

VEGF is a mediator of the renoprotective effects of multipotent marrow stromal cells in acute kidney injury

J Cell Mol Med, 13 (8B) (2009), pp. 2109–2114

62

D.P. Basile

The endothelial cell in ischemic acute kidney injury: implications for acute and chronic function

Kidney Int, 72 (2) (2007), pp. 151–156

63

S. Aggarwal, M.F. Pittenger

Human mesenchymal stem cells modulate allogeneic immune cell responses

Blood, 105 (4) (2005), pp. 1815–1822

64

A. Bartholomew, C. Sturgeon, M. Siatskas et al.

Mesenchymal stem cells suppress lymphocyte proliferation in vitro and prolong skin graft survival in vivo

Exp Hematol, 30 (1) (2002), pp. 42–48

65

M. Di Nicola, C. Carlo-Stella, M. Magni et al.

Human bone marrow stromal cells suppress T-lymphocyte proliferation induced by cellular or nonspecific mitogenic stimuli

Blood, 99 (10) (2002), pp. 3838–3843

66

R. Meisel, A. Zibert, M. Laryea, U. Göbel, W. Däubener, D. Dilloo

Human bone marrow stromal cells inhibit allogeneic T-cell responses by indoleamine 2,3-dioxygenase-mediated tryptophan degradation

Blood, 103 (12) (2004), pp. 4619–4621

67

W.T. Tse, J.D. Pendleton, W.M. Beyer, M.C. Egalka, E.C. Guinan

Suppression of allogeneic T-cell proliferation by human marrow stromal cells: implications in transplantation

Transplantation, 75 (3) (2003), pp. 389–397

68

Z. Selmani, A. Naji, I. Zidi et al.

Human leukocyte antigen-G5 secretion by human mesenchymal stem cells is required to suppress T lymphocyte and natural killer function and to induce CD4⁺CD25^{high}FOXP3⁺ regulatory T cells

Stem Cells, 26 (1) (2008), pp. 212–222

69

K. Le Blanc, I. Rasmusson, B. Sundberg et al.

Treatment of severe acute graft-versus-host disease with third party haploidentical mesenchymal stem cells

Lancet, 363 (9419) (2004), pp. 1439–1441

70

H. Li, Z. Guo, X. Jiang, H. Zhu, X. Li, N. Mao

Mesenchymal stem cells alter migratory property of T and dendritic cells to delay the development of murine lethal acute graft-versus-host disease

Stem Cells, 26 (10) (2008), pp. 2531–2541

71

D. García-Olmo, M. García-Arranz, D. Herreros, I. Pascual, C. Peiro, J.A. Rodríguez-Montes

A phase I clinical trial of the treatment of Crohn's fistula by adipose mesenchymal stem cell transplantation

Dis Colon Rectum, 48 (7) (2005), pp. 1416–1423

72

F. Casiraghi, N. Azzollini, P. Cassis et al.

Pretransplant infusion of mesenchymal stem cells prolongs the survival of a semiallogeneic heart transplant through the generation of regulatory T cells

J Immunol, 181 (6) (2008), pp. 3933–3946

73

G. Camussi, M.C. Deregibus, S. Bruno, V. Cantaluppi, L. Biancone

Exosomes/microvesicles as a mechanism of cell to cell communication

Kidney Int, 78 (9) (2010), pp. 838–848

74

S. Bruno, C. Grange, M.C. Deregibus et al.

Mesenchymal stem cell-derived microvesicles protect against acute tubular injury

J Am Soc Nephrol, 20 (5) (2009), pp. 1053–1067

75

F. Collino, M.C. Deregibus, S. Bruno et al.

Microvesicles derived from adult human bone marrow and tissue specific mesenchymal stem cells shuttle selected pattern of miRNAs

PLoS One, 5 (7) (2010), p. e11803

76

J. Ratajczak, K. Miekus, M. Kucia et al.

Embryonic stem cell-derived microvesicles reprogram hematopoietic progenitors: evidence for horizontal transfer of mRNA and protein delivery

Leukemia, 20 (5) (2006), pp. 847–856

77

J.M. Aliotta, F.M. Sanchez-Guijo, G.J. Dooner et al.

Alteration of marrow cell gene expression, protein production, and engraftment into lung by lung-derived microvesicles: a novel mechanism for phenotype modulation

Stem Cells, 25 (9) (2007), pp. 2245–2256

78

M.C. Deregibus, V. Cantaluppi, R. Calogero et al.

Endothelial progenitor cell derived microvesicles activate an angiogenic program in endothelial cells by a horizontal transfer of mRNA

Blood, 110 (7) (2007), pp. 2440–2448

79

S. Gatti, S. Bruno, M.C. Deregibus et al.

Microvesicles derived from human adult mesenchymal stem cells protect against ischaemia-reperfusion-induced acute and chronic kidney injury

Nephrol Dial Transplant, 26 (5) (2011), pp. 1474–1483

80

N. Sakata, N.K. Chan, J. Chrisler, A. Obenaus, E. Hathout

Bone marrow cell cotransplantation with islets improves their vascularization and function

Transplantation, 89 (6) (2010), pp. 686–693

81

N. Perico, F. Casiraghi, M. Inrona et al.

Autologous mesenchymal stromal cells and kidney transplantation: a pilot study of safety and clinical feasibility

Clin J Am Soc Nephrol, 6 (2) (2011), pp. 412–422

82

J. Tan, W. Wu, X. Xu et al.

Induction therapy with autologous mesenchymal stem cells in living-related kidney transplants: a randomized controlled trial

JAMA, 307 (11) (2012), pp. 1169–1177

83

F. Tögel, C. Westenfelder

Mesenchymal stem cell: a new therapeutic tool for AKI

Nat Rev Nephrol, 6 (3) (2010), pp. 179–183

84

D.J. Prockop, S.D. Olson

Clinical trials with adult stem/progenitor cells for tissue repair: let's not overlook some essential precautions

Blood, 109 (8) (2007), pp. 3147–3151

85

M. Breitbach, T. Bostani, W. Roell et al.

Potential risks of bone marrow cell transplantation into infarcted hearts

Blood, 110 (4) (2007), pp. 1362–1369

86

M.W. Epperly, H. Guo, J.E. Gretton, J.S. Greenberger

Bone marrow origin of myofibroblasts in irradiation pulmonary fibrosis

Am J Respir Cell Mol Biol, 29 (2) (2003), pp. 213–224

87

U. Kunter, S. Rong, P. Boor et al.

Mesenchymal stem cells prevent progressive experimental renal failure but maldifferentiate into glomerular adipocytes

J Am Soc Nephrol, 18 (6) (2007), pp. 1754–1764