

AperTO - Archivio Istituzionale Open Access dell'Università di Torino

**The intracellular delivery of TAT-aequorin reveals calcium-mediated sensing of environmental and symbiotic signals by the arbuscular mycorrhizal fungus *Gigaspora margarita***

**This is a pre print version of the following article:**

*Original Citation:*

*Availability:*

This version is available <http://hdl.handle.net/2318/144807> since 2015-12-22T16:42:21Z

*Published version:*

DOI:10.1111/nph.12849

*Terms of use:*

Open Access

Anyone can freely access the full text of works made available as "Open Access". Works made available under a Creative Commons license can be used according to the terms and conditions of said license. Use of all other works requires consent of the right holder (author or publisher) if not exempted from copyright protection by the applicable law.

(Article begins on next page)



# UNIVERSITÀ DEGLI STUDI DI TORINO

***This is an author version of the contribution published on:***

*Questa è la versione dell'autore dell'opera:*

*[New Phytologist, 20014, 10.1111/nph.12849]*

***The definitive version is available at:***

*La versione definitiva è disponibile alla URL:*

*[<http://onlinelibrary.wiley.com/doi/10.1111/nph.12849/abstract;jsessionid=B7B7B3661CD021B0D9D3F7833A4D2872.f01t04>]*

## **The intracellular delivery of TAT-aequorin reveals calcium-mediated sensing of environmental and symbiotic signals by the arbuscular mycorrhizal fungus *Gigaspora margarita***

Roberto Moscatiello, Simone Sello, Mara Novero, Alessandro Negro, Paola Bonfante, Lorella Navazio

### *Summary*

Arbuscular mycorrhiza (AM) is an ecologically relevant symbiosis between most land plants and Glomeromycota fungi. The peculiar traits of AM fungi have so far limited traditional approaches such as genetic transformation. The aim of this work was to investigate whether the protein transduction domain of the HIV-1 transactivator of transcription (TAT) protein, previously shown to act as a potent nanocarrier for macromolecule delivery in both animal and plant cells, may translocate protein cargoes into AM fungi.

We evaluated the internalization into germinated spores of *Gigaspora margarita* of two recombinant TAT fusion proteins consisting of either a fluorescent (GFP) or a luminescent (aequorin) reporter linked to the TAT peptide.

Both TAT-fused proteins were found to enter AM fungal mycelia after a short incubation period (5–10 min).  $\text{Ca}^{2+}$  measurements in *G. margarita* mycelia pre-incubated with TAT-aequorin demonstrated the occurrence of changes in the intracellular free  $\text{Ca}^{2+}$  concentration in response to relevant stimuli, such as touch, cold, salinity, and strigolactones, symbiosis-related plant signals.

These data indicate that the cell-penetrating properties of the TAT peptide can be used as an effective strategy for intracellularly delivering proteins of interest and shed new light on  $\text{Ca}^{2+}$  homeostasis and signalling in AM fungi.

### *Introduction*

Arbuscular mycorrhizal (AM) fungi form an old and widespread mutualistic symbiosis with the vast majority of land plants, in which the fungi supply mineral nutrients, particularly phosphorus, to the plant, receiving in turn carbohydrates from the photosynthetic host. In view of its relevance for ecology and increasing demand for sustainable agriculture, the AM symbiosis has been the subject of a myriad of studies in the past decades, mainly focused on the cytological, biochemical and molecular features of this intimate plant–fungal beneficial association (see Gutjahr & Parniske, 2013 for a review). One of the most investigated features in the early stages of the establishment of the AM symbiosis is the calcium-mediated signalling pathway that is triggered in the host plant by AM fungal diffusible signals. AM germinated spore exudates were found to trigger a transient elevation in cytosolic  $\text{Ca}^{2+}$  in soybean (*Glycine max*) cell cultures (Navazio et al., 2007). Moreover, repeated oscillations in perinuclear and nuclear  $\text{Ca}^{2+}$  concentration (a phenomenon called  $\text{Ca}^{2+}$  spiking) were evoked in response to AM fungi in host plants (Kosuta et al., 2008; Chabaud et al., 2011; Sieberer et al., 2012). The chemical nature of the symbiotic signals released by AM fungi (the so-called ‘Myc factors’) has recently been determined (Maillet et al., 2011; Genre et al., 2013). Whereas the role of  $\text{Ca}^{2+}$  as a crucial intracellular messenger in the plant symbiotic signalling pathway induced by AM fungi has been firmly established, much less information is available on the

fungal side. It has recently been demonstrated that fungal genes related to Ca<sup>2+</sup> homeostasis and signalling are up-regulated during AM symbiosis development (Liu et al., 2013; Tisserant et al., 2013). Nevertheless, whether Ca<sup>2+</sup> is involved in the perception of plant symbiotic signals by AM fungi, thus playing a role in the microsymbiont comparable to that played in the plant counterpart, is not yet known. Similarly, no information is available on Ca<sup>2+</sup>-based sensing systems in AM fungi for the detection of environmental cues. Measurements of Ca<sup>2+</sup> dynamics in AM fungi using either fluorescent Ca<sup>2+</sup> indicators or genetically encoded Ca<sup>2+</sup> probes have so far been hampered by the biological traits of AM fungi, such as the complex structure of the cell wall, mainly containing multilayered chitin and glucans, which impedes the intracellular delivery of Ca<sup>2+</sup>-sensitive dyes; in addition, the aseptate and coenocytic nature of the hyphae, containing hundreds of nuclei sharing the same cytoplasm, renders the isolation of protoplasts unfeasible and classical methods of genetic transformation difficult to perform (Harrier & Millam, 2001; Bonfante & Genre, 2010; Sanders & Croll, 2010; Lanfranco & Young, 2012). Although stable transformants of AM fungi have not yet been obtained, transient expression of exogenous genes has been achieved using a biolistic approach (Helber & Requena, 2008).

As an alternative to conventional genetic transformation methods, a strategy based on the intracellular delivery of proteins mediated by the so-called cell-penetrating peptides (CPPs) (Chugh et al., 2010; Sawant & Torchilin, 2010; Bechara & Sagan, 2013) was applied to AM fungi in this work. The TAT peptide, derived from the protein transduction domain of the human immunodeficiency virus type 1 (HIV-1) transactivator of transcription (TAT) protein, has previously been demonstrated to function as an efficient nanocarrier for the intracellular delivery of cargoes of interest in both animal and plant cells (Gump & Dowdy, 2007; Chugh et al., 2010). After verifying the successful internalization of the fluorescent marker GFP into the hyphal network of the AM fungus *Gigaspora margarita*, we used the TAT-mediated delivery of the bioluminescent Ca<sup>2+</sup> reporter aequorin as an innovative tool to analyse Ca<sup>2+</sup>-based sensing mechanisms of AM fungi. Our results reveal that AM fungi perceive different abiotic stimuli as well as strigolactones, symbiosis-specific plant host signals, via changes in intracellular Ca<sup>2+</sup> concentrations. The data obtained suggest that the TAT peptide may be used as a promising delivery vehicle for a more detailed study of the still enigmatic biology of AM fungi.

## *Materials and Methods*

### **Fungal material**

Spores of *Gigaspora margarita* (BEG 34; International Bank for the Glomeromycota, University of Kent, UK) were surface-sterilized with 3% (w/v) chloramine-T and 0.03% (w/v) streptomycin sulfate, then rinsed several times with sterile distilled water and stored at 4°C. To induce germination, batches of 100 spores were placed in 1 ml of sterile distilled water and incubated at 30°C in the dark for 7 d (germination rate > 90%).

## **DNA constructs and isolation of recombinant proteins**

The plasmids encoding the N-terminal His-tagged GFP, TAT-GFP and TAT-aequorin have been previously described (Peroni et al., 2007; Zonin et al., 2011). To generate the His-tagged aequorin protein, the sequence encoding aequorin from plasmid pTAT-aequorin (Zonin et al., 2011) was amplified by PCR using the following primers: 5'-CTCTAGAATGAAGCTTTATGATGTTCCCTGA-3' and 5'-AGGAATTCTTAGGGGACAGCTGGACCGTA-3'. After digestion with XbaI and EcoRI, the amplicon was cloned between NheI and EcoRI restriction sites of plasmid pRSET-Dpl (Cereghetti et al., 2004). For expression of recombinant proteins, the plasmids were inserted by transformation into BL21 DE3 (Lys E) Escherichia coli bacterial cells. Protein induction was started by adding 0.5 mM isopropyl- $\beta$ -D-1-thiogalactopyranoside (IPTG) to 2 l of BL21 suspension culture (LB medium supplemented with 50  $\mu$ g ml<sup>-1</sup> ampicillin) in the exponential phase of growth (optical density at 600 nm = 0.6). After overnight incubation at room temperature, bacterial cells were harvested by centrifugation at 3000 g for 15 min at 4°C. For aequorin and TAT-aequorin, the pellet was resuspended in solubilization buffer (7.5 mM  $\beta$ -mercaptoethanol, 10 mM Tris-HCl, pH 8.0, 2.5 mM imidazole, 6 M urea, 0.5 M NaCl, and 20% glycerol) and disrupted by sonication. The lysate was clarified by centrifugation (11 000 g for 35 min at 4°C) and loaded onto a 3-ml Ni-NTA agarose column (Qiagen, Hilden, Germany). After washing with solubilization buffer without urea, the recombinant proteins were eluted with 0.37 M imidazole. Finally, the recovered protein was extensively dialysed against 7.5 mM  $\beta$ -mercaptoethanol, 10 mM Tris-HCl, pH 7.4, 0.2 M NaCl, and 20% glycerol and flash-frozen in aliquots at -80°C.

GFP and TAT-GFP proteins were purified as described by Battistutta et al. (2000) and Peroni et al. (2007). Protein concentration was estimated from the calculated extinction coefficient ( $M^{-1} \text{ cm}^{-1}$ ) at 280 nm (Abs 0.1%, g l<sup>-1</sup>) of 2.62 for aequorin, 1.82 for TAT-aequorin, 5.07 for GFP, 0.774 for TAT-GFP.

## **TAT-mediated protein delivery**

For TAT-mediated delivery, recombinant TAT-fusion proteins were directly added to *G. margarita* germinated spores. Incubation with TAT-GFP was performed at 3  $\mu$ M for 10 min. Incubation with TAT-aequorin was carried out at 30  $\mu$ M for different time intervals, ranging from 5 min to 24 h. After incubation with the TAT fusion proteins, fungal mycelia were extensively washed (five washes with 1 ml of sterile distilled H<sub>2</sub>O) before fluorescence microscopy analyses (for TAT-GFP) or luminescence detection (for TAT-aequorin). In control experiments, germinated spores of *G. margarita* were incubated with either 3  $\mu$ M GFP or 30  $\mu$ M aequorin (not fused to the TAT peptide).

## **Fluorescence microscopy**

Fluorescence was analysed in living *G. margarita* mycelia using a Leica DMI4000 B inverted fluorescence microscope (Leica Microsystems, Wetzlar, Germany), and 35-mm  $\mu$ -dishes with a thin bottom (ibidi GmbH, Martinsried, Germany). A filter set for GFP detection (excitation at 450/490 nm; emission at 500/550 nm) was used. Images were acquired with a Leica DFC300 FX digital camera, using the Leica Application Suite (las) software (Leica Microsystems, Heerbrugg, Switzerland).

In some experiments, after incubation with TAT-GFP, the samples were washed with phosphate-buffered saline (PBS) and 0.02% (w/v) EDTA and subsequently incubated with 0.05% (w/v) trypsin for 5 min. Microscopy observations were carried out after two washes in PBS and one wash in H<sub>2</sub>O.

### **Protein extraction, SDS-PAGE and western blot analysis**

To prepare protein crude extracts, germinated spores of *G. margarita* (batches of 100) were lysed with 200  $\mu$ l of ice-cold Cell Disruption Buffer from the PARIS™ kit (Ambion by Life Technologies, Carlsbad, CA, USA) supplemented with protease inhibitors (0.5 mM phenylmethylsulfonyl fluoride, 1 mM benzamidine, and 1  $\mu$ M leupeptin) in three cycles of 30 s each using a motorized pestle (Sigma-Aldrich). Samples were subsequently subjected to three cycles of 30 s of sonication (3510 Branson, Danbury, CT, USA) followed each time by 30 s on ice. After centrifugation at 1000 g for 15 min at 4°C, the protein concentration in the supernatant was determined by the Bradford assay (Bio-Rad, Hercules, CA, USA). Proteins were separated by SDS-PAGE (12% polyacrylamide), transferred onto PVDF membranes (Immobilon-P; Millipore, Billerica, MA, USA) and subsequently processed for immunoblotting, as previously described (Zonin et al., 2011). A monoclonal anti-polyhistidine antibody (Sigma-Aldrich) was used at a 1 : 1500 dilution.

### ***In vitro* apoaequorin reconstitution**

Germinated spores of *G. margarita* (batches of 100 spores, germinated for 7 d) were incubated with 30  $\mu$ M TAT-aequorin for 2 h. After extensive washing (five washes with 1 ml of sterile distilled H<sub>2</sub>O), total protein extracts were isolated using the apoaequorin reconstitution buffer (150 mM Tris-HCl and 4 mM EGTA, pH 8.0, supplemented with 0.8 mM phenylmethylsulfonyl fluoride). Protein samples were subsequently incubated with 1 mM  $\beta$ -mercaptoethanol and 5  $\mu$ M coelenterazine (Molecular Probes by Life Technologies) for 4 h in the dark at 4°C. Luminescence emitted by 25- $\mu$ g protein samples was recorded after the addition of 100 mM CaCl<sub>2</sub> and integrated for a 200-s time interval.

### **Calcium measurements in germinated spores of *G. margarita***

Germinated spores of *G. margarita* (batches of 100 spores, germinated for 6 d) were incubated for 4 h with 5 mg ml<sup>-1</sup> Australys Zimolysine (Oliver Ogar, Montebello Vicentino, Italy) in 1.2 M MgSO<sub>4</sub> and 10 mM sodium phosphate, pH 5.8. This enzymatic mixture is characterized by a high  $\beta$ -glucanase activity and secondary activities such as that of chitinase. After extensive washing, the fungal samples were incubated overnight in the dark with 5  $\mu$ M coelenterazine, washed again and incubated with 30  $\mu$ M TAT-aequorin for 1–2 h. After further washing, Ca<sup>2+</sup> measurements were carried out in samples of 200 germinated spores using a purpose-built luminometer (Electron Tubes Ltd, Uxbridge, UK) containing a 9893/350A photomultiplier (Thorn EMI, Middlesex, UK). Fungal samples were challenged with abiotic and biotic stimuli by injection of an equal volume (100  $\mu$ l) of two-fold concentrated solutions with a light-tight syringe. Two synthetic strigolactone analogues were used: GR24, which was purchased from Chiralix (Nijmegen, the Netherlands), and EGO5 (Prandi et al., 2011), which was kindly provided by Cristina Prandi (Turin, Italy). Stock solutions of GR24 (10<sup>-3</sup> M) and MEB10 (10<sup>-2</sup> M) were

prepared in acetone and control samples were treated with the same percentage of the solvent (maximal concentration 0.5%). Mechanical perturbation was applied by injection of an equal volume (100  $\mu$ l) of H<sub>2</sub>O at room temperature, and cold shock was applied by adding 200  $\mu$ l of ice-cold H<sub>2</sub>O directly to germinated spores of *G. margarita*. At the end of the experiments, the remaining aequorin pool was discharged by injection of 100  $\mu$ l of 1 M CaCl<sub>2</sub>, 30% ethanol, and 4% Igepal CA-630 (Sigma-Aldrich). The light signal was collected and converted off-line into Ca<sup>2+</sup> concentration values using a computer algorithm based on the Ca<sup>2+</sup> response curve of aequorin (Brini et al., 1995).

### **Fungal viability assay**

Viability of the fungal mycelium was monitored using the LIVE/DEAD FungaLight™ Yeast Viability kit (Invitrogen by Life Technologies), following the manufacturer's instructions. The assay utilizes a mixture of the green-fluorescent nucleic acid stain SYTO 9 (excitation/emission maxima 480/500 nm) and the red-fluorescent nucleic acid stain propidium iodide (excitation/emission maxima 490/635). Fungi with intact cell membranes fluoresce green, whereas fungi with damaged membranes fluoresce red. As an alcohol-killed control, samples of germinated spores of *G. margarita* were incubated for 1 h with 70% isopropanol.

### *Results*

#### **The TAT peptide can import the green fluorescent protein into AM fungal hyphae**

In order to start evaluating whether the protein transduction domain (PTD) of the TAT protein from the HIV-1 virus can be used as a nanocarrier to import proteins of interest into AM fungi, a TAT-GFP recombinant fusion protein, composed of the 11 amino acids of the TAT peptide fused with the N-terminus of GFP, was engineered. The use of GFP allows easy verification of the intracellular delivery of the protein cargo by TAT. Germinated spores (7 d) of the AM fungus *G. margarita* were incubated for 10 min with 3  $\mu$ M TAT-GFP and then extensively washed to get rid of any residual protein aspecifically bound to the fungal surface. In addition to the expected autofluorescence of the spores in the green channel (after excitation with blue light at 450/490 nm), a GFP-specific fluorescent signal could be observed inside the fungal hyphae (Fig. 1a,a'). The fluorescence was still present after 48 h, with some residual fluorescence detectable even after 72 h (data not shown), suggesting relative stability of the TAT-imported fusion protein. In control samples, incubated with H<sub>2</sub>O only, it was possible to observe only the autofluorescence of the spores, whereas young hyphae did not exhibit any fluorescent signal (Fig. 1b,b'). When *G. margarita* germinated spores were incubated with GFP (3  $\mu$ M for 10 min) alone, not fused with the TAT peptide, no detectable fluorescence signal was observed in the hyphal network (Fig. 1c,c'), indicating the specificity of the TAT-mediated protein cargo import.

In order to ascertain that the fluorescence observed in the samples incubated with TAT-GFP (Fig. 1a,a') does not derive from residual fusion protein not specifically attached to the surface of the hyphal network, a mild proteolytic treatment with trypsin (0.05% for 5 min), commonly used during *in vitro* subculturing of mammalian cells growing in a monolayer (Frangini et al., 2013), was carried out after incubation

with TAT-GFP. Although the gentle trypsinization effectively removed some residual protein attached to the surface of some spores, it did not eliminate hyphal fluorescence (Supporting Information Fig. S1). The efficiency of TAT-GFP digestion by trypsin was checked by SDS-PAGE analysis (Fig. S1). This result confirmed that the TAT-GFP chimera was indeed internalized inside the cytoplasm of *G. margarita* hyphae. Taken together, these results indicate the potential of the TAT peptide to be used as a vehicle for protein internalization into AM fungal mycelia.

### **The TAT peptide can import the Ca<sup>2+</sup>-sensitive bioluminescent protein aequorin into AM fungal hyphae**

Next, the possibility of using a TAT-aequorin fusion protein as a novel tool to monitor Ca<sup>2+</sup> dynamics in AM fungi was evaluated. We have recently demonstrated that the basic domain of the TAT protein efficiently targeted the attached bioluminescent Ca<sup>2+</sup> reporter aequorin to the cytoplasm of plant cells (Zonin et al., 2011). To verify whether the fusion protein TAT-aequorin could be internalized by AM fungi, *G. margarita* spores were germinated for different time intervals and subsequently incubated with TAT-aequorin (30 μM) for 10 min. After exhaustive washing with H<sub>2</sub>O and reconstitution of apoaequorin with its prosthetic group coelenterazine, luminescence measurements were carried out by injecting an equal volume of discharge solution (1 M CaCl<sub>2</sub> and 30% ethanol). Although almost no luminescence was detected in samples from either ungerminated spores (2 d) or spores that had just started their germination (4 d), a high level of luminescence was recorded in fully germinated spore (7 d) samples. The light signal was found to significantly decrease again in 14-d germinated spores ( $P < 0.05$ ; Student's t-test) (Fig. 2). No luminescence was detected in fungal samples incubated with aequorin, not fused to the TAT peptide (data not shown).

Germinated spores showing the optimal level of mycelium development (7 d) were incubated with TAT-aequorin (30 μM) for increasing time intervals. Immunoblot analysis of total protein extracts demonstrated that the fusion protein, absent in control samples, was rapidly and progressively internalized into treated samples. The uptake occurred as fast as 5 min after cell incubation with TAT-aequorin and the level of internalized protein slightly increased in the next 24 h (Fig. 3a). No immunoreactive bands were detected in protein extracts from *G. margarita* samples incubated with free aequorin (not fused to TAT), used at the same concentration (30 μM) and for the same time intervals (5 min to 24 h) as TAT-aequorin (Fig. 3b).

Nevertheless, luminescence levels emitted by fungal mycelia that had been incubated with TAT-aequorin and with coelenterazine to reconstitute the functional holoprotein were found to be insufficient to enable Ca<sup>2+</sup> measurement assays to be carried out (Fig. 2). It was only possible to record high levels of luminescence (c. 107 counts) by using an *in vitro* reconstitution assay, that is, reconstitution of the TAT-delivered aequorin with coelenterazine after the lysis of the fungal mycelium (data not shown). The discrepancy between the luminescence levels obtained after *in vivo* and *in vitro* reconstitution of the TAT-delivered photoprotein suggests that a potentially limiting factor for the use of TAT-delivered aequorin as an effective tool for Ca<sup>2+</sup> measurements in AM fungi may be poor penetration of coelenterazine through the fungal cell wall. An alternative explanation may be inadequate lysis of the fungal mycelium at the end of the experiment at the luminometer, when the remaining active aequorin pool has to be discharged.



## Ca<sup>2+</sup>-mediated perception of environmental signals by AM fungi

In order to achieve a slight loosening of the AM fungal cell wall, thus facilitating the internalization of coelenterazine and/or TAT-aequorin to levels suitable for Ca<sup>2+</sup> monitoring, germinated spores of *G. margarita* were pretreated for 4 h with 5 mg ml<sup>-1</sup> of a mixture of fungal cell wall-degrading enzymes (Australys Zimolysine). The viability of the fungal mycelium, assessed by staining with SYTO 9 and propidium iodide, was found not to be affected by this mild treatment (Fig. S2). Additional changes in the experimental protocol were found to be necessary in order to obtain luminescence levels suitable for conversion to intracellular Ca<sup>2+</sup> values ( $3.09 \times 10^5 \pm 0.32 \times 10^5$  total counts; n = 21): (1) the use in the Ca<sup>2+</sup> measurement assays of samples composed of a large number of germinated spores of *G. margarita* (c. 200); (2) overnight reconstitution with coelenterazine; (3) the addition of the detergent Igepal CA-630 (4%, v/v) to the discharge solution used at the end of each experiment at the luminometer (Mithöfer & Mazars, 2002). Once successfully set up, TAT-aequorin-based Ca<sup>2+</sup> measurements demonstrated the occurrence of a tight fungal homeostatic control of the intracellular free Ca<sup>2+</sup> concentration ([Ca<sup>2+</sup>]<sub>i</sub>) under resting conditions. In particular, the basal [Ca<sup>2+</sup>]<sub>i</sub> was found to reach values comparable to those usually found in all eukaryotic cells (c. 100 nM) (Fig. 4). Upon stimulation with different environmental stimuli, *G. margarita* was found to respond with rapid and transient intracellular Ca<sup>2+</sup> changes, characterized by different kinetics. In particular, a mechanical perturbation, simulated by the injection of one volume of H<sub>2</sub>O, induced a modest perturbation of the [Ca<sup>2+</sup>]<sub>i</sub>, which peaked at c. 0.44 μM and rapidly dissipated within 30 s (Fig. 4a). A cold shock (injection of ice-cold H<sub>2</sub>O; Fig. 4b) and salt stress (0.3 M NaCl; Fig. 5c) were found to trigger in germinated spores of *G. margarita* transient intracellular Ca<sup>2+</sup> changes characterized by higher peak amplitudes (c. 0.79 μM and c. 0.57 μM, respectively) and longer durations (c. 2 min and 5 min, respectively). In order to test the effect of strigolactones, the plant signalling molecules that are known to play a crucial role in the early steps of the AM symbiosis (Akiyama et al., 2005; Besserer et al., 2006), germinated spores of *G. margarita* were challenged with the synthetic analogue GR24 (10<sup>-6</sup> M). As shown in Fig. 4(d), GR24 was found to evoke a rapid and remarkable [Ca<sup>2+</sup>]<sub>i</sub> elevation (c. 0.90 μM after 10 s) which dissipated within 3–4 min. When higher doses (2 × 10<sup>-6</sup> and 5 × 10<sup>-6</sup> M) were used, the amplitude of the GR24-induced Ca<sup>2+</sup> transient was found to be dose-dependent (Fig. 4d). In response to 10<sup>-7</sup> M GR24, a Ca<sup>2+</sup> trace superimposable on that obtained with 10<sup>-6</sup> M was recorded, whereas a lower dose (10<sup>-8</sup> M) did not seem to trigger any Ca<sup>2+</sup> response above the touch response displayed in Fig. 4(a) (data not shown), suggesting intrinsic limitations in the sensitivity of the TAT-aequorin-based Ca<sup>2+</sup> assays.

To confirm the Ca<sup>2+</sup>-mediated perception of strigolactones by *G. margarita*, fungal mycelia were challenged with EGO5, another recently designed synthetic strigolactone analogue (Prandi et al., 2011). EGO5 induced a Ca<sup>2+</sup> transient characterized by a similar kinetics, although the dose (10<sup>-5</sup> M) requested to trigger a comparable Ca<sup>2+</sup> response was ten times higher than for GR24 (Fig. 5). Taken together, these results demonstrate a strict control on [Ca<sup>2+</sup>]<sub>i</sub> in the AM fungus *G. margarita* and the occurrence of Ca<sup>2+</sup>-based sensing mechanisms for detecting and responding to several relevant stimuli, in particular strigolactones, symbiosis-related signals.

## *Discussion*

In this work we have demonstrated that the cell-penetrating peptide TAT, an amino acid sequence derived from the protein transduction domain of the HIV-1 TAT protein, could efficiently translocate two covalently linked protein cargoes (GFP and aequorin) into the AM fungus *G. margarita*.

Whereas the level of some internalized CPP-fused proteins was found to rapidly decrease over 24 h of cellular uptake in plant cells (Zonin et al., 2011), the TAT-GFP and TAT-aequorin fusion proteins used in this study were still fully detectable in the cytoplasm of *G. margarita* after 24 h. The presence of some residual intracellular fluorescence in the fungal hyphae even after 72 h of TAT-GFP incubation suggests a longer and more favourable time frame of TAT-delivered protein bioavailability in AM fungi.

Previous studies carried out in the Basidiomycota fungus *Antrodia cinnamomea* treated with a mixture of GFP and the nona-arginine CPP (R9) demonstrated that noncovalent protein transduction, that is, the cellular internalization of proteins noncovalently bound to arginine-rich intracellular delivery peptides, was ineffective in this fungus (Liu et al., 2008). Based on our results, it seems that the mechanism of cellular uptake in covalent or noncovalent protein transduction may vary, and/or that there can be differences in the CPP penetrating capabilities in different fungi. As the use of CPPs to mediate protein internalization without a covalent link with their cargoes has been demonstrated to work in different animal and plant systems (Wang et al., 2006), further investigations are needed to assess if protein transduction by CPPs can be effected even in a noncovalent fashion in AM fungi.

The intracellular delivery of the bioluminescent Ca<sup>2+</sup> reporter aequorin by means of the TAT peptide used as a cell-penetrating tool offered the possibility of monitoring the concentration of intracellular free Ca<sup>2+</sup> and its dynamic variations in AM fungi. The calcium ion is known to act as an intracellular messenger in a wide range of signalling processes in bacteria, plants, fungi and animals (Dominguez, 2004; Clapham, 2007; Dodd et al., 2010; Cai & Clapham, 2012). Although many fungal species utilize a relatively simple Ca<sup>2+</sup> homeostasis and signalling machinery, the complex Ca<sup>2+</sup> signalling machinery present in basal fungi supports the notion that some components of the Ca<sup>2+</sup> signalling toolkit might have been lost after the animal–fungi divergence (Cai & Clapham, 2012). Up-regulation of AM fungal genes related to Ca<sup>2+</sup> homeostasis and signalling has been reported during both early (hyphopodium) and late (arbuscule) stages of symbiotic interactions with host roots, strongly suggesting the involvement of calcium as a signalling system in fungal processes leading to root colonization (Breuninger & Requena, 2004; Requena et al., 2007; Liu et al., 2013). Nevertheless, direct measurements of Ca<sup>2+</sup> dynamics have so far been hampered by technical difficulties in delivering either fluorescent Ca<sup>2+</sup> dyes or genetically encoded Ca<sup>2+</sup> probes into AM fungi, because of the unique biological traits of Glomeromycota.

Recombinant aequorin expression has previously been shown to be a valuable method for the monitoring of Ca<sup>2+</sup> signalling in filamentous fungi. Changes in [Ca<sup>2+</sup>]<sub>cyt</sub> were monitored in different Ascomycota fungi, such as the phytopathogenic fungus *Phyllosticta ampellicida* (Shaw et al., 2001), *Neurospora crassa* and *Aspergillus niger* (Nelson et al., 2004; Benčina et al., 2005), after challenge with several physico-chemical stimuli. Those studies demonstrated Ca<sup>2+</sup>-mediated sensing by fungal hyphae of various physiologically perturbing treatments, such as mechanical

perturbation, hypo-osmotic shock, and exposure to high concentrations of external  $\text{Ca}^{2+}$ .

In this work we have set up a novel strategy based on the TAT-aided translocation of aequorin into AM fungi. Although the thick and tough cell wall of *G. margarita* spores (Sward, 1981) seemed to represent an insurmountable barrier for the TAT-cargo protein complexes, TAT-aequorin was found to be efficiently internalized by fully developed (7 d) fungal mycelia. The finding that, after 1 h of incubation with TAT-aequorin, 14-d germinated spores emitted a light signal significantly weaker than that of 7-d germinated spores is likely to be attributable to the obligate biotrophic nature of AM fungi, which need a plant partner in order to complete their life cycle (Bonfante & Requena, 2011): if they do not encounter a host plant, fungal hyphae stop their growth, retract their cytoplasm, and form septa separating viable from empty hyphal segments (Logi et al., 1998). The establishment of efficient aequorin-based  $\text{Ca}^{2+}$  measurement assays required controlled pretreatment of AM fungal mycelia with a mixture of fungal cell wall-degrading enzymes before the incubation with TAT-aequorin and coelenterazine. This initial step, which did not affect the viability of the fungal mycelium, allowed for a slight loosening of the fungal cell wall, thus improving the reconstitution of the active holoprotein inside AM fungal mycelia. The results obtained indicate that the AM fungus *G. margarita* is able to maintain the free  $[\text{Ca}^{2+}]_i$  at concentrations as low as those recorded in animal and plant cells (c. 100 nM). Moreover, these data demonstrate the use of transient changes in  $[\text{Ca}^{2+}]_{\text{cyt}}$  for the transduction of environmental signals of both an abiotic and a biotic nature in the AM fungus *G. margarita*. AM fungal germinated spores were found to respond to environmental cues, such as mechanical perturbation, cold and salt stress, with stimulus-specific  $\text{Ca}^{2+}$  signatures. Of particular interest is the  $\text{Ca}^{2+}$  response of *G. margarita* to strigolactones, the plant signalling molecules known to play a crucial role in the early steps of AM symbiosis (Xie et al., 2010; Ruyter-Spira et al., 2013; Zwanenburg & Pospišil, 2013). The induction of a rapid and transient elevation in  $[\text{Ca}^{2+}]_i$  in response to both the synthetic strigolactones GR24 and EGO5 indicates the  $\text{Ca}^{2+}$ -mediated perception of plant signals related to symbiosis by AM fungi. This result, together with the recent demonstration of an intracellular  $\text{Ca}^{2+}$  change as an early essential step in the symbiotic signalling pathway activated by plant flavonoids in the nitrogen-fixing bacterium *Rhizobium leguminosarum* (Moscatiello et al., 2010; Arrigoni et al., 2013), suggests that both microbial symbionts – AM fungi and rhizobia – possess  $\text{Ca}^{2+}$ -based sensing systems for detecting and transducing symbiosis-specific plant host signals.

Future work will be focused on the design and evaluation of TAT-fused fluorescent  $\text{Ca}^{2+}$  reporter proteins, such as Cameleon. This would allow  $\text{Ca}^{2+}$  imaging experiments to be performed in single AM fungal hyphae, thus circumventing the need for large quantities of AM germinated spores as in aequorin-based  $\text{Ca}^{2+}$  assays. The possibility of performing  $\text{Ca}^{2+}$  imaging experiments at the single cell level would be particularly important for the detection of potential  $\text{Ca}^{2+}$  spiking events. Another attractive possibility is the use of a mutagenized TAT peptide (Cardarelli et al., 2008) to selectively target genetically encoded  $\text{Ca}^{2+}$  reporters to the nucleus, thus enabling analysis of  $\text{Ca}^{2+}$  oscillations within this compartment. This would be particularly relevant in view of the observed up-regulation of a nuclear  $\text{Ca}^{2+}$ /calmodulin-dependent protein kinase in *Glomus intraradices* during mycorrhizal development (Liu et al., 2013). Pulsatile cytoplasmic  $\text{Ca}^{2+}$  signatures have recently been revealed by means of the recombinant expression of a Cameleon  $\text{Ca}^{2+}$  sensor in some plant pathogenic filamentous fungi (Kim et al., 2012).

Moreover, the potential of CPPs as a genetic engineering tool in AM fungi deserves to be considered in the future. Indeed, the effective use of CPPs for gene transfer and gene silencing has been reported in both animal and plant cells (see Chugh et al., 2010 and Bechara & Sagan, 2013 for reviews).

In conclusion, the TAT-mediated delivery of a Ca<sup>2+</sup> reporter protein is a welcome technical advance which has permitted the measurement of stimulus-specific Ca<sup>2+</sup> signals in an AM fungus. The detection of strigolactone-induced intracellular Ca<sup>2+</sup> changes in *G. margarita* helps to improve our current understanding of chemical communication during AM symbiosis establishment, and confirms the versatility of calcium as a common signalling system underlying many beneficial plant–microbe interactions (Oldroyd, 2013; Venkateshwaran et al., 2013). The TAT-based strategy for protein internalization in AM fungi lends itself as an interesting alternative to previously reported methods of transient transformation of AM fungi (Harrier & Millam, 2001; Helber & Requena, 2008), and may represent a powerful tool for the deciphering of some of the still elusive features of AM fungi, which have just started to be unravelled by the recent sequencing of the *Rhizophagus irregularis* genome (Tisserant et al., 2013).

#### *Acknowledgements*

This work was supported by PRIN 2010–2011 (prot. 2010CSJX4F) and Progetti di Ricerca di Ateneo 2012 (prot. CPDA127210) to L.N. R.M. is a post-doctoral fellowship holder of the University of Padua. We thank C. Prandi (Turin, Italy) for kindly providing the synthetic strigolactone analogue EGO5 and C. Rampazzo (Padua, Italy) for useful advice on gentle trypsinization.

#### *References*

- Akiyama K, Matsuzaki K, Hayashi H. 2005. Plant sesquiterpenes induce hyphal branching in arbuscular mycorrhizal fungi. *Nature* 419: 824–827.
- Arrigoni G, Tolin S, Moscatiello R, Masi A, Navazio L, Squartini A. 2013. Calcium-dependent regulation of genes for plant nodulation in *Rhizobium leguminosarum* detected by iTRAQ quantitative proteomic analysis. *Journal of Proteome Research* 12: 5323–5330.
- Battistutta R, Negro A, Zanotti G. 2000. Crystal structure and refolding properties of the mutant F99S/M153T/V163A of the green fluorescent protein. *Proteins* 41: 429–437.
- Bechara C, Sagan S. 2013. Cell-penetrating peptides: 20 years later, where do we stand? *FEBS Letters* 587: 1693–1702.
- Benčina M, Legiša M, Read ND. 2005. Cross-talk between cAMP and calcium signalling in *Aspergillus niger*. *Molecular Microbiology* 56: 268–281.
- Besserer A, Puech-Pagès V, Kiefer P, Gomez-Roldan V, Jauneau A, Roy S, Portais J-C, Roux C, Bécard G, Séjalon-Delmas N. 2006. Strigolactones stimulate arbuscular mycorrhizal fungi by activating mitochondria. *PLoS Biology* 4: e226.

- Bonfante P, Genre A. 2010. Mechanisms underlying beneficial plant-fungus interactions in mycorrhizal symbiosis. *Nature Communications* 1: 48.
- Bonfante P, Requena N. 2011. Dating in the dark: how roots respond to fungal signals to establish arbuscular mycorrhizal symbiosis. *Current Opinion in Plant Biology* 14: 1–7.
- Breuninger M, Requena N. 2004. Recognition events in AM symbiosis: analysis of fungal gene expression at the early appressorium stage. *Fungal Genetics and Biology* 41: 794–804.
- Brini M, Marsault R, Bastianutto C, Alvarez J, Pozzan T, Rizzuto R. 1995. Transfected aequorin in the measurement of cytosolic Ca<sup>2+</sup> concentration ([Ca<sup>2+</sup>]<sub>c</sub>). *Journal of Biological Chemistry* 270: 9896–9903.
- Cai X, Clapham DE. 2012. Ancestral Ca<sup>2+</sup> signalling machinery in early animal and fungal evolution. *Molecular Biology and Evolution* 29: 91–100.
- Cardarelli F, Serresi M, Bizzarri R, Beltram F. 2008. Tuning the transport properties of HIV-1 Tat arginine-rich motif in living cells. *Traffic* 9: 528–539.
- Cereghetti GM, Negro A, Vinck E, Massimino ML, Sorgato MC, Van Doorslaer S. 2004. Copper(II) binding to the human Doppel protein may mark its functional diversity from the prion protein. *Journal of Biological Chemistry* 279: 36497–36503.
- Chabaud M, Genre A, Sieberer BJ, Faccio A, Fournier J, Novero M, Barker DG, Bonfante P. 2011. Arbuscular mycorrhizal hyphopodia and germinated spore exudates trigger Ca<sup>2+</sup> spiking in the legume and nonlegume root epidermis. *New Phytologist* 189: 347–355.
- Chugh A, Eudes F, Shim YS. 2010. Cell-penetrating peptides: nanocarrier for macromolecule delivery in living cells. *IUBMB Life* 62: 183–193.
- Clapham DE. 2007. Calcium signalling. *Cell* 131: 1047–1058.
- Dodd AN, Kudla J, Sanders D. 2010. The language of calcium signalling. *Annual Review of Plant Biology* 61: 593–620.
- Dominguez DC. 2004. Calcium signalling in bacteria. *Molecular Microbiology* 54: 291–297.
- Frangini M, Franzolin E, Chemello F, Laveder P, Romualdi C, Bianchi V, Rampazzo C. 2013. Synthesis of mitochondrial DNA precursors during myogenesis, an analysis in purified C2C12 myotubes. *Journal of Biological Chemistry* 288: 5624–5635.
- Genre A, Chabaud M, Balzergue C, Puech-Pagès V, Novero M, Rey T, Fournier J, Rochange S, Bécard G, Bonfante P et al. 2013. Short-chain chitin oligomers from arbuscular mycorrhizal fungi trigger nuclear Ca<sup>2+</sup> spiking in *Medicago truncatula* roots and their production is enhanced by strigolactone. *New Phytologist* 198: 190–202.

- Gump JM, Dowdy SF. 2007. TAT transduction: the molecular mechanism and therapeutic prospects. *Trends in Molecular Medicine* 13: 443–448.
- Gutjahr C, Parniske M. 2013. Cell and developmental biology of arbuscular mycorrhiza symbiosis. *Annual Review of Cell and Developmental Biology* 29: 593–617.
- Harrier LA, Millam S. 2001. Biolistic transformation of arbuscular mycorrhizal fungi. Progress and perspectives. *Molecular Biotechnology* 18: 25–33.
- Helber N, Requena N. 2008. Expression of the fluorescent markers DsRed and GFP fused to a nuclear localization signal in the arbuscular mycorrhizal fungus *Glomus intraradices*. *New Phytologist* 177: 537–548.
- Kim H-S, Czymmek KJ, Patel A, Modla S, Nohe A, Ducan R, Gilroy S, Kang S. 2012. Expression of the Cameleon calcium biosensor in fungi reveals distinct Ca<sup>2+</sup> signatures associated with polarized growth, development, and pathogenesis. *Fungal Genetics and Biology* 49: 589–601.
- Kosuta S, Hazledine S, Sun J, Miwa H, Morris RJ, Downie JA, Oldroyd GED. 2008. Differential and chaotic calcium signatures in the symbiosis signalling pathway of legumes. *Proceedings of the National Academy of Sciences, USA* 105: 9823–9828.
- Lanfranco L, Young JPW. 2012. Genetic and genomic glimpses of the elusive arbuscular mycorrhizal fungi. *Current Opinion in Plant Biology* 15: 454–461.
- Liu BR, Chou JC, Lee HJ. 2008. Cell membrane diversity in noncovalent protein transduction. *Journal of Membrane Biology* 222: 1–15.
- Liu Y, Gianinazzi-Pearson V, Arnould C, Wipf D, Zhao B, van Tuinen D. 2013. Fungal genes related to calcium homeostasis and signalling are upregulated in symbiotic arbuscular mycorrhiza interactions. *Fungal Biology* 117: 22–31.
- Logi C, Sbrana C, Giovannetti M. 1998. Cellular events involved in survival of individual arbuscular mycorrhizal symbionts growing in the absence of the host. *Applied and Environmental Microbiology* 64: 3473–3479.
- Maillet F, Poinot V, André O, Puech-Pagès V, Haouy A, Gueunier M, Cromer L, Giraudet D, Formey D, Niebel A et al. 2011. Fungal lipochitooligosaccharide symbiotic signals in arbuscular mycorrhiza. *Nature* 469: 58–63.
- Mithöfer A, Mazars C. 2002. Aequorin-based measurements of intracellular Ca<sup>2+</sup>-signatures in plant cells. *Biological Procedures Online* 4: 105–118.
- Moscatiello R, Squartini A, Mariani P, Navazio L. 2010. Flavonoid-induced calcium signalling in *Rhizobium leguminosarum* bv. *viciae*. *New Phytologist* 188: 814–823.
- Navazio L, Moscatiello R, Genre A, Novero M, Baldan B, Bonfante P, Mariani P. 2007. A diffusible signal from arbuscular mycorrhizal fungi elicits a transient cytosolic calcium elevation in host plant cells. *Plant Physiology* 144: 673–681.

- Nelson G, Kozlova-Zwinderman O, Collis AJ, Knight MR, Fincham JRS, Stanger CP, Renwick A, Hessing JGM, Punt PJ, van den Hondel CAMJJ et al. 2004. Calcium measurement in living filamentous fungi expressing codon-optimized aequorin. *Molecular Microbiology* 52: 1437–1450.
- Oldroyd GED. 2013. Speak, friend, and enter: signalling systems that promote beneficial symbiotic associations in plants. *Nature Reviews Microbiology* 11: 252–263.
- Peroni D, Negro A, Bähr M, Dietz GP. 2007. Intracellular delivery of Neuroglobin using HIV-1 TAT protein transduction domain fails to protect against oxygen and glucose deprivation. *Neuroscience Letters* 421: 110–114.
- Prandi C, Occhiato EG, Tabasso S, Bonfante P, Novero M, Scarpi D, Bova ME, Miletto I. 2011. New potent fluorescent analogues of strigolactones: synthesis and biological activity in parasitic weed germination and fungal branching. *European Journal of Organic Chemistry* 2011: 3781–3793.
- Requena N, Serrano E, Ocón A, Breuninger M. 2007. Plant signals and fungal perception during arbuscular mycorrhiza establishment. *Phytochemistry* 68: 33–40.
- Ruyter-Spira C, Al-Babili S, van der Krol S, Bouwmeester H. 2013. The biology of strigolactones. *Trends in Plant Science* 18: 72–83.
- Sanders IR, Croll D. 2010. Arbuscular mycorrhiza: the challenge to understand the genetics of the fungal partner. *Annual Review of Genetics* 44: 271–292.
- Sawant R, Torchilin V. 2010. Intracellular transduction using cell-penetrating peptides. *Molecular BioSystems* 6: 628–640.
- Shaw BD, Kozlova O, Read ND, Turgeon BG, Hoch HC. 2001. Expression of recombinant aequorin as an intracellular calcium reporter in the phytopathogenic fungus *Phyllosticta ampellicida*. *Fungal Genetics and Biology* 34: 207–215.
- Sieberer BJ, Chabaud M, Fournier J, Timmers AC, Barker DG. 2012. A switch in Ca<sup>2+</sup> spiking signature is concomitant with endosymbiotic microbe entry into cortical root cells in *Medicago truncatula*. *Plant Journal* 69: 822–830.
- Sward RJ. 1981. The structure of the spores of *Gigaspora margarita*. I. The dormant spore. *New Phytologist* 87: 761–768.
- Tisserant E, Malbreil M, Kuo A, Kohler A, Symeonidi A, Balestrini R, Charron P, Duensing N, Frei dit Frey N, Gianinazzi-Pearson V et al. 2013. Genome of an arbuscular mycorrhizal fungus provides insight into the oldest plant symbiosis. *Proceedings of the National Academy of Sciences, USA* 110: 20117–20122.
- Venkateshwaran M, Volkening JD, Sussman MR, Ané J-M. 2013. Symbiosis and the social network of higher plants. *Current Opinion in Plant Biology* 16: 118–127.

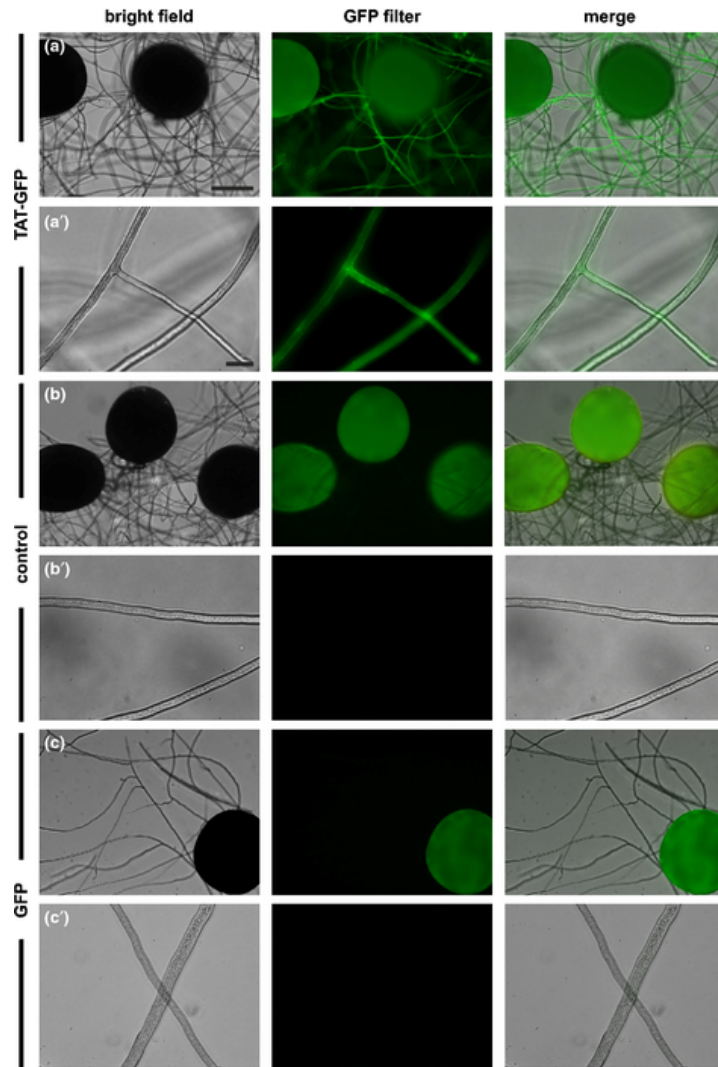
Wang YH, Chen CP, Chan MH, Chang M, Hou YW, Chen HH, Hsu HR, Liu K, Lee HJ. 2006. Arginine-rich intracellular delivery peptides noncovalently transport protein into living cells. *Biochemical and Biophysical Research Communications* 346: 758–767.

Xie X, Yoneyama K, Yoneyama K. 2010. The strigolactone story. *Annual Review of Phytopathology* 48: 93–117.

Zonin E, Moscatiello R, Miuzzo M, Cavallarin N, Di Paolo ML, Sandonà D, Brini M, Negro A, Navazio L. 2011. TAT-mediated aequorin transduction: an alternative approach for effective calcium measurements in plant cells. *Plant and Cell Physiology* 52: 2225–2235.

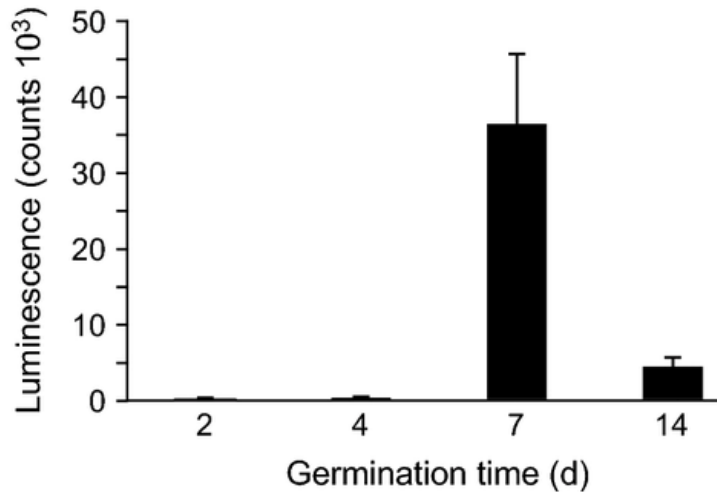
Zwanenburg B, Pospíšil T. 2013. Structure and activity of strigolactones: new plant hormones with a rich future. *Molecular Plant* 6: 38–62.





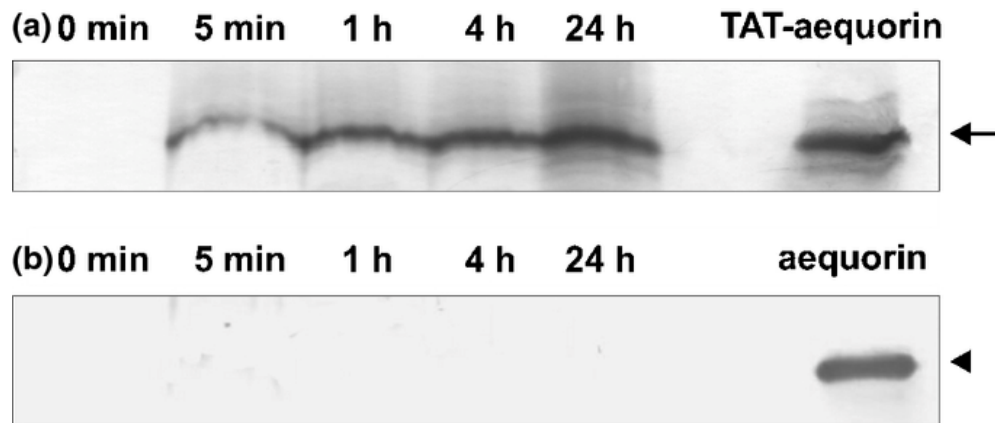
**Figure 1.**

Internalization of the TAT-GFP fusion protein into the arbuscular mycorrhizal (AM) fungus *Gigaspora margarita*. Germinated spores of *G. margarita* (7 d) were incubated for 10 min with: (a, a') 3  $\mu$ M TAT-GFP, (b, b') H<sub>2</sub>O only, or (c, c') 3  $\mu$ M GFP. After the differential treatments, fungal samples were extensively washed with H<sub>2</sub>O. Bright field and fluorescence microscopy images are shown. Bars: (a–c) 250  $\mu$ m; (a'–c') 25  $\mu$ m.



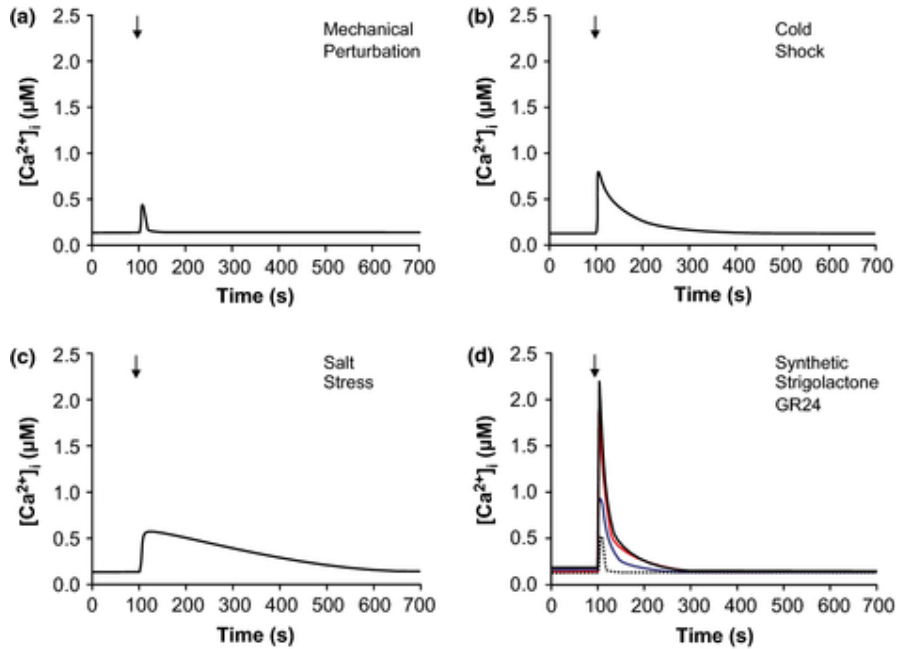
**Figure 2.**

Luminescence measurements in *Gigaspora margarita* at different times of spore germination, after 1 h of incubation with the TAT-aequorin fusion protein. Luminescence emitted by samples of 100 fungal germinating spores was measured, after injection of an equal volume of 1 M CaCl<sub>2</sub> and 30% ethanol. Data are the means  $\pm$  SE of three independent experiments.



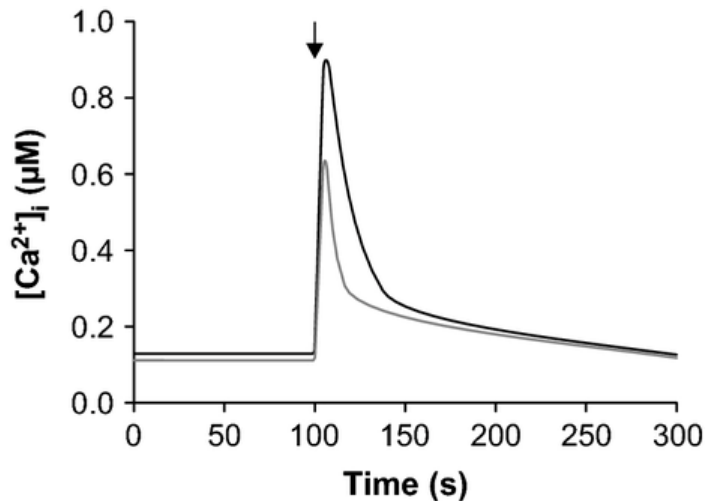
**Figure 3.**

Immunoblot analysis of TAT-mediated aequorin delivery into *Gigaspora margarita* mycelia. Germinating spores (7 d) of *G. margarita* were incubated with 30  $\mu$ M TAT-aequorin (a) or 30  $\mu$ M aequorin (b) for the reported time intervals. Total protein extracts (30  $\mu$ g) were separated by 12% SDS-PAGE, transferred onto PVDF membranes and incubated with an anti-polyHis antibody. Purified 26-kDa TAT-aequorin (a; 0.4  $\mu$ g; arrow), and 22-kDa aequorin (b; 0.4  $\mu$ g; arrowhead) were used as positive controls.



**Figure 4.**

Monitoring of intracellular free  $\text{Ca}^{2+}$  concentration ( $[\text{Ca}^{2+}]_i$ ) in *Gigaspora margarita*. Germinated fungal spores (7 d) were incubated with TAT-aequorin ( $30 \mu\text{M}$  for 1–2 h) before  $\text{Ca}^{2+}$  measurement assays. The following stimuli were applied (arrow) after 100 s: (a) mechanical perturbation (one volume of  $\text{H}_2\text{O}$ ); (b) cold shock (ice-cold  $\text{H}_2\text{O}$ ); (c) salt stress ( $0.3 \text{ M NaCl}$ ), (d) the synthetic strigolactone GR24 (blue line,  $10^{-6} \text{ M}$ ; red line,  $2 \times 10^{-6} \text{ M}$ ; black line,  $5 \times 10^{-6} \text{ M}$ ) or the solvent control (dotted line). The traces are representative of three independent experiments which gave very similar results.



**Figure 5.**

Comparison of the effects of the synthetic strigolactone analogues GR24 and MEB10 on  $[\text{Ca}^{2+}]_i$  in *Gigaspora margarita*.  $\text{Ca}^{2+}$  assays were performed in *G. margarita* germinated spores (7 d) previously incubated with TAT-aequorin ( $30 \mu\text{M}$  for 1–2 h). Black trace, GR24 ( $10^{-6} \text{ M}$ ); grey trace, EGO5 ( $10^{-5} \text{ M}$ ).