

AperTO - Archivio Istituzionale Open Access dell'Università di Torino

Geological map of the Monviso massif (Western Alps)

This is the author's manuscript

Original Citation:

Availability:

This version is available <http://hdl.handle.net/2318/138939> since

Published version:

DOI:10.1080/17445647.2013.842507

Terms of use:

Open Access

Anyone can freely access the full text of works made available as "Open Access". Works made available under a Creative Commons license can be used according to the terms and conditions of said license. Use of all other works requires consent of the right holder (author or publisher) if not exempted from copyright protection by the applicable law.

(Article begins on next page)

GEOLOGICAL MAP OF THE MONVISO MASSIF (WESTERN ALPS)

Gianni Balestro⁽¹⁾, Gianfranco Fioraso⁽²⁾ & Bruno Lombardo⁽²⁾

(1) Dipartimento di Scienze della Terra, Università degli Studi di Torino, Via Valperga Caluso 35 - 10125 Torino, Italy. Email: gianni.balestro@unito.it
 (2) Istituto di Geoscienze e Georisorse, Consiglio Nazionale delle Ricerche, Via Valperga Caluso 35 - 10125 Torino, Italy

m 500 0 500 1000 1500 2000 m

QUATERNARY DEPOSITS

- F11 Alluvial and debris flow deposits, composed of gravelly cobbles and sandy gravels, clast-supported, well stratified to massive, sometimes containing decimetric- to metric-scale boulders (F11). Peat bogs (Plan del Re). *Late Upper Pleistocene - Present*
- Td Mixed talus and debris flow deposits, composed of angular clasts, cobble and gravel with crude stratification, clast supported, sometimes with partially openwork texture (Td). *Late Upper Pleistocene - Present*
- Ti Talus deposits, composed of centimetric to decimetric angular fragments and blocks, clast supported, with openwork to partially openwork texture (Ti). *Late Upper Pleistocene - Present*
- Ld Landslide deposits, composed of chaotic accumulation of angular blocks and gravelly-sandy matrix (rock fall and earth flow) or loosened portions of bedrock (rock slide) (Ld). *Late Upper Pleistocene - Present*
- Ui Undifferentiated glacial deposits, made up of diamicton with silty-sandy matrix and chaotic blocks accumulation. Blocks are locally devoid of lichens (Ui). *Holocene - Present*
- Rg1 Active rock glacier, composed of poorly sorted angular blocks, at surface, and blocks and fine material with interstitial ice, below the surface. Blocks are locally devoid of lichens (Rg1). *Holocene - Present*
- Rg2 Inactive rock glacier, composed of poorly sorted angular blocks, at surface, and blocks and fine material below the surface. Blocks are lichen covered (Rg2). *Holocene*
- Bs Block stream composed of chaotic accumulation of angular blocks with coarsening-upward texture (Bs). *Holocene*
- FI2 Ancient alluvial and debris flow deposits, composed of gravelly cobbles with sandy matrix, clast-supported, massive to crudely stratified, sometimes containing decimetric- to metric-scale boulders (Plan Meizé) (FI2). *Late Upper Pleistocene - Holocene*
- Ug Undifferentiated glacial deposits, made up of diamicton and chaotic blocks accumulation with silty-sandy matrix (Ug). *Upper Pleistocene*

QUEYRAS Schistes Lustrés

- Qc Undifferentiated carbonate metasediments (calcschists s.l.) (Qc). *Early Cretaceous? - Late Cretaceous?*

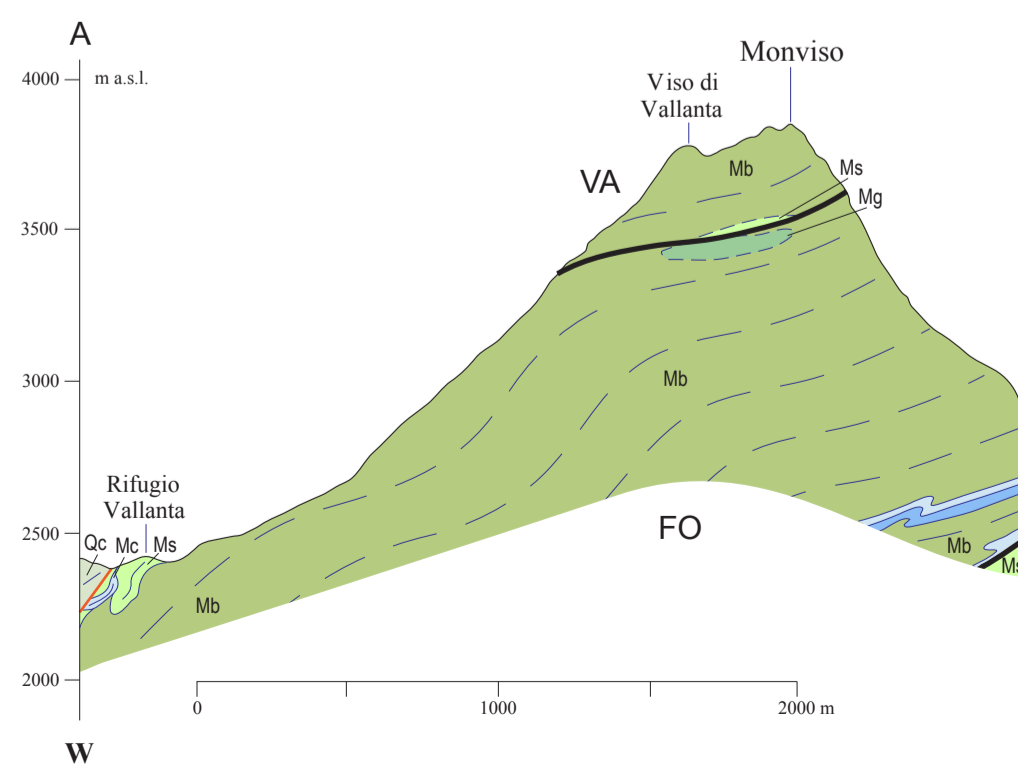
MONVISO META-OPHIOLITE COMPLEX

- Mc Fine- to medium-grained lawsonite-bearing calcschists (Mc), in places with dm- to m-sized levels and bodies of metabasite (a). *Late Jurassic? - Cretaceous?*
- Mq Quartz-rich, garnet-bearing micaschists (Mq); phengite, garnet-bearing metacherts (Monte Medassa, S of Lago Fiorenza, Monte Ghinica Pastour, Punta Forcion, NE of Punta Gastaldi, E of Passo delle Sagnette) (a). *Late Jurassic?*
- Mb Banded epidote- Na-amphibole metabasites, greenschists (Mb); pillowed metabasites and basalt metabreccias (a); massive eclogite-facies metabasites (b). *Middle Jurassic? - Late Jurassic?*
- Me Eclogite-facies Fe-Ti metagabbros and fine-grained eclogites (Me); eclogite metabreccias (Punta Forcion, SW of Testa Rossa, Colle di Luca) (a). *Middle Jurassic?*
- Mg "Smaragdite"-bearing Mg-Al metagabbros (Mg); coarse-grained metagabbros with well-preserved magmatic fabric (a); cumulate metatroctolites (N and S of Punta Fiume) (b); greenschist-facies Mg-Al metagabbros (c); bodies of eclogite (d). *Middle Jurassic?*
- Ms Antigorite serpentinites and antigorite schists (Ms); massive metaperidotites (Colle Armoine, SW of Lago Fiorenza, E of Punta Caprera) (a); meta-ophiolites (NE of Colle Armoine, NE of Costa Pelata, SE of Punta Rasciassa) (b); rodingite dykes (c). *Middle Jurassic?*

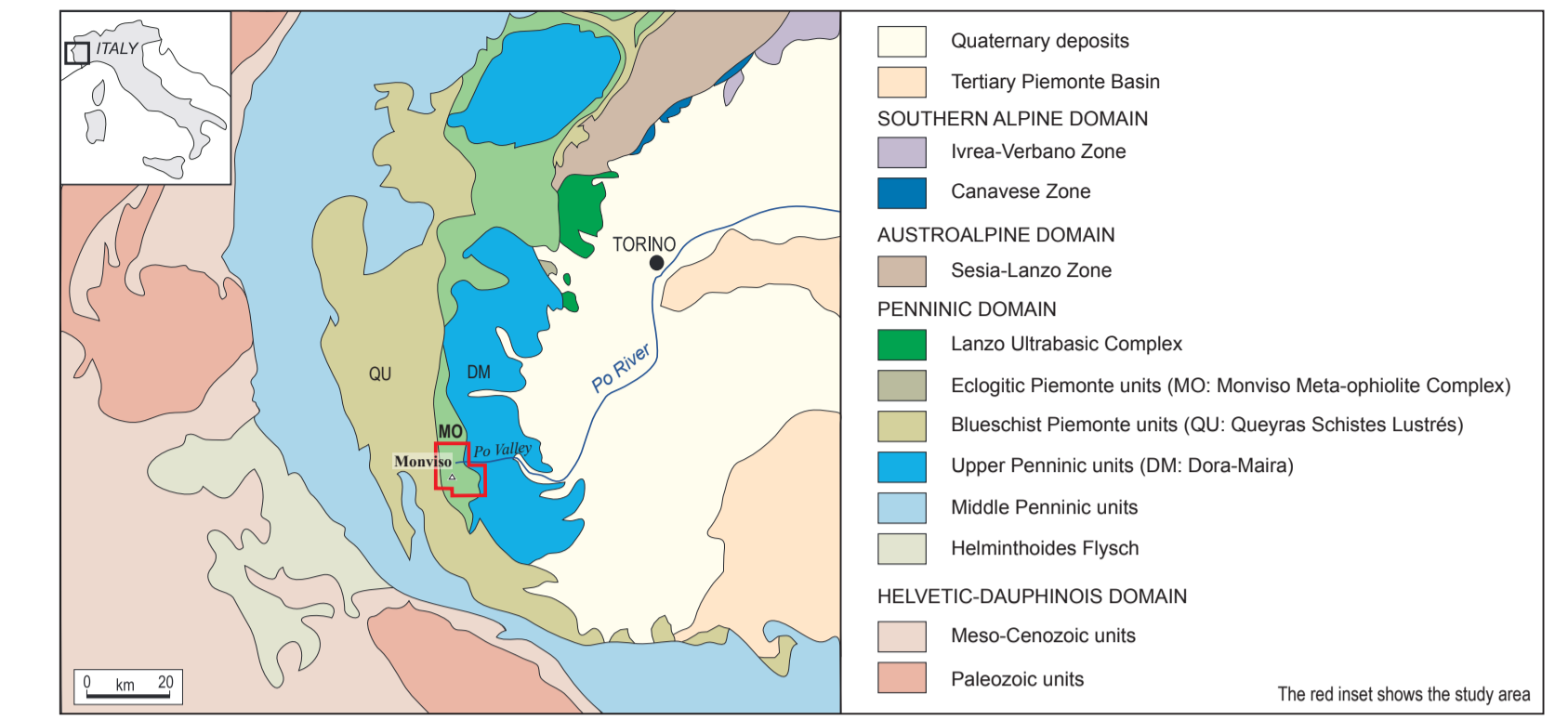
DORA-MAIRA

- Dc Fine- to medium-grained calcschists with levels of micaceous marbles (Dc). *Early Jurassic?*
- Dm White to grey fine-grained marbles and dolomite marbles (Dm). *Middle Triassic? - Late Triassic?*
- Dq Micaceous quartzites and fine-grained micaschists (Dq). *Permian?*

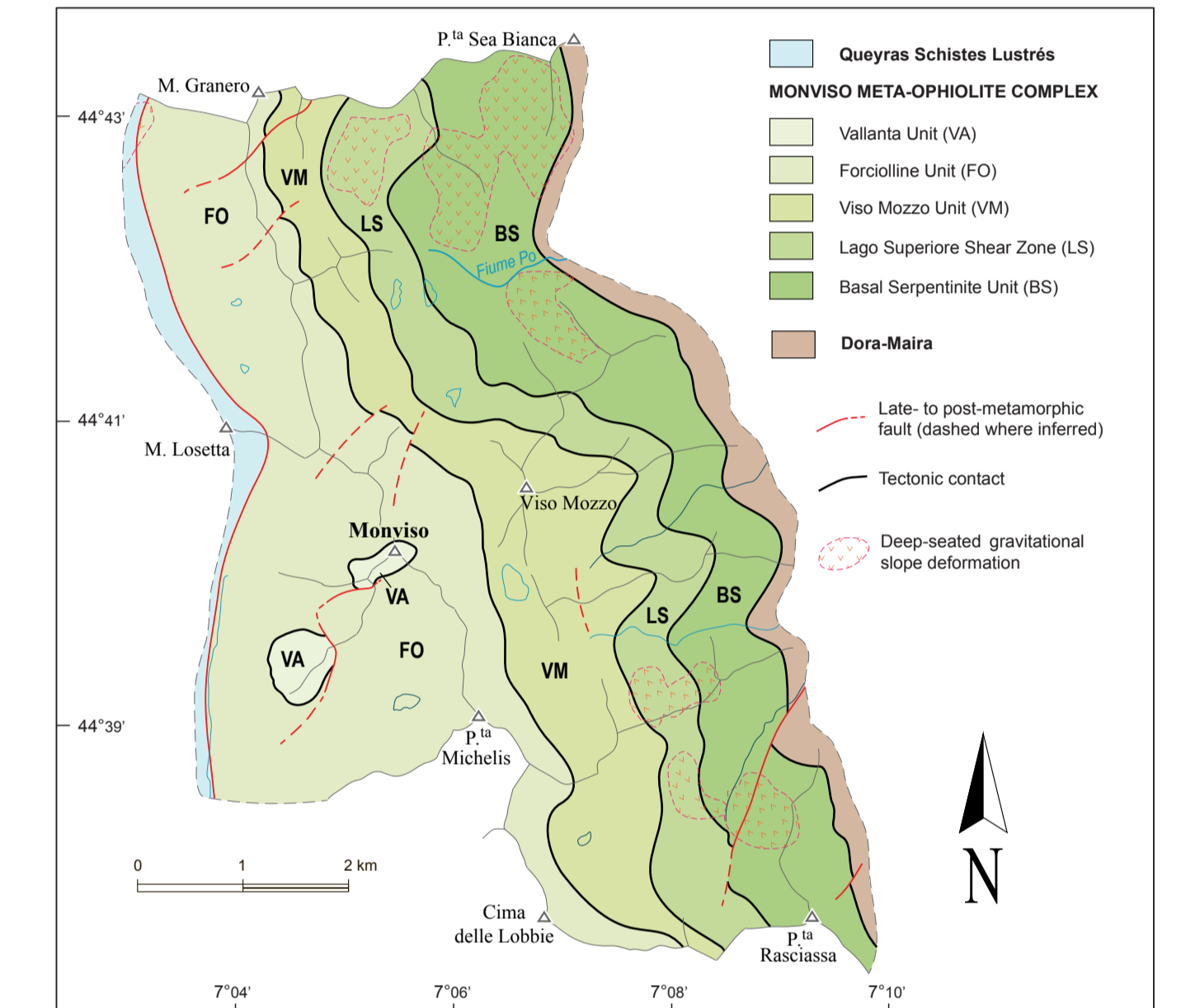
- Lithological contact
- Tectonic contact
- Late- to post-metamorphic fault (dashed where inferred)
- Main foliation (Sp)
- Pre-Sp foliation
- Syn-Sp fold axis
- Protalus rampart
- Post-Sp fold axis
- Post-Sp axial surface
- Trace of cross section
- Alluvial and debris flow fan
- Mixed fan
- Talus fan
- Upper Pleistocene moraine
- Little Ice Age and subsequent moraine
- Rock glacier ridge
- Trench
- Counter-slope
- Yielding surface
- Boundary of the 1999 Coolidge ice avalanche accumulation



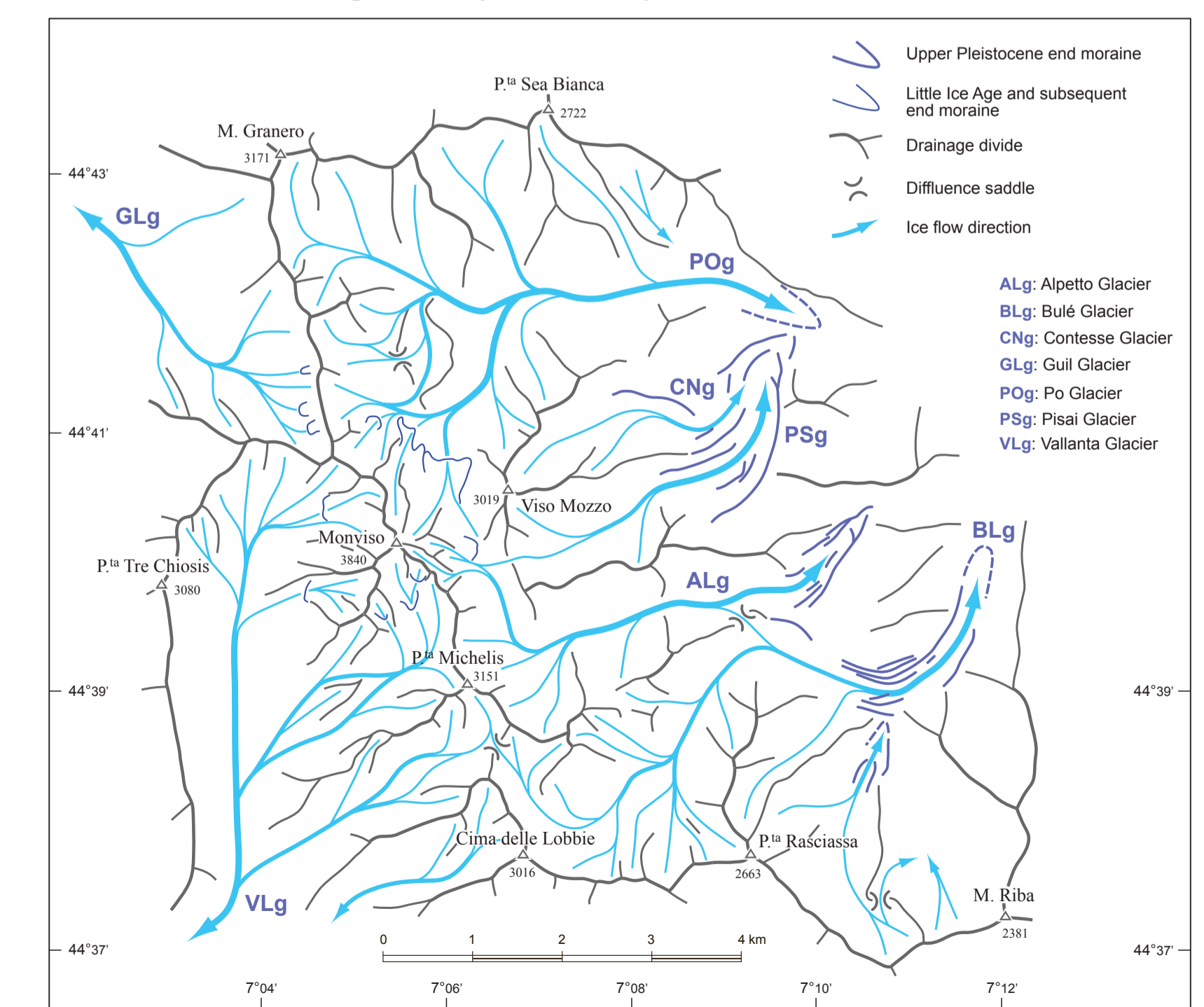
Tectonic map of the Western Alps



Tectonic sketch map



Ice-flow pattern of glaciers during the Last Glacial Maximum



The topographic map derives from the Carta Tecnica Regionale of the Regione Piemonte (vector_50 series; Coordinate System WGS 1984 UTM Zone 32N).