

AperTO - Archivio Istituzionale Open Access dell'Università di Torino

Structure, spatio-temporal dynamics and disturbance regime of the mixed beech-silver fir-Norway spruce old-growth forest of Biogradska Gora (Montenegro)

This is the author's manuscript

Original Citation:

Availability:

This version is available <http://hdl.handle.net/2318/154302> since 2016-11-22T13:30:16Z

Published version:

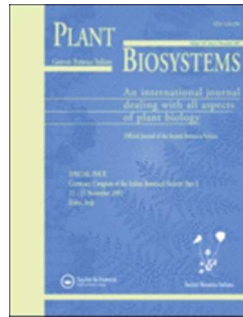
DOI:10.1080/11263504.2014.945978

Terms of use:

Open Access

Anyone can freely access the full text of works made available as "Open Access". Works made available under a Creative Commons license can be used according to the terms and conditions of said license. Use of all other works requires consent of the right holder (author or publisher) if not exempted from copyright protection by the applicable law.

(Article begins on next page)



Structure, spatio-temporal dynamics and disturbance regime of the mixed beech-silver fir-Norway spruce old-growth forest of Biogradska Gora (Montenegro)

Journal:	<i>Plant Biosystems</i>
Manuscript ID:	TPLB-2013-0026.R2
Manuscript Type:	Original Article
Date Submitted by the Author:	n/a
Complete List of Authors:	Motta, Renzo; University of Turin, Scienze agrarie, forestali e alimentari Bjelanovic, Ivan; University of Belgrade, Borgogno Mondino, Enrico; University of Turin, Curovic, Milic; University of Montenegro, Garbarino, Matteo; Univ. Politecnica delle Marche, Keren, Srdjan; University of Banja Luka, Meloni, Fabio; University of Turin, Berretti, Roberta; University of Turin, Nosenzo, Antonio; Univ of Turin, Dipartimento di Scienze agrarie, forestali e alimentari
Keywords:	old-growth forests, satellite images, forest structure, gaps, disturbances, coarse woody debris

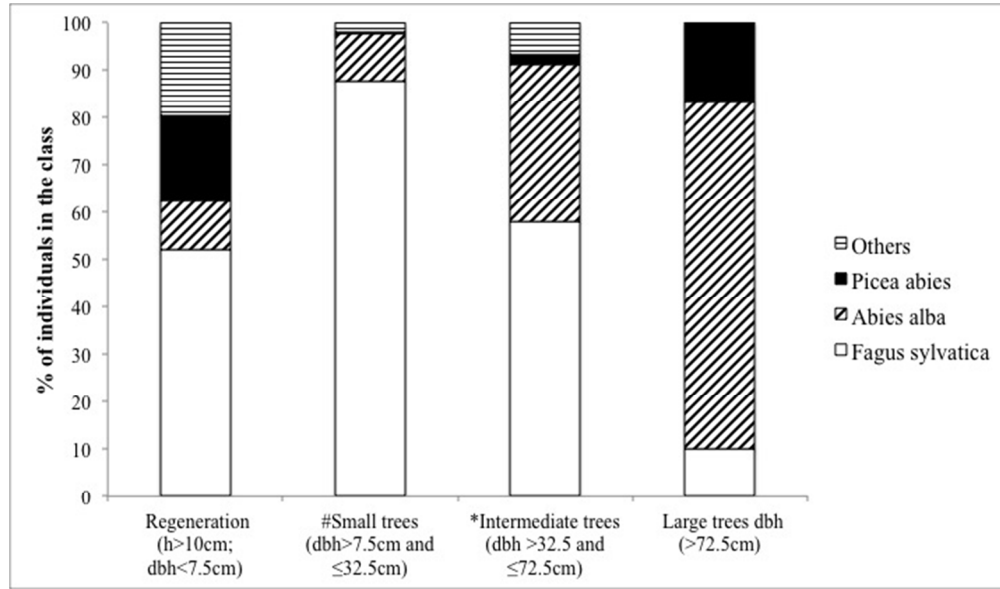


Fig. 4. Relative abundance of the most abundant tree species according to the size class (from regeneration to dominant trees) showing stratification of the species.

252x148mm (72 x 72 DPI)

Review Only

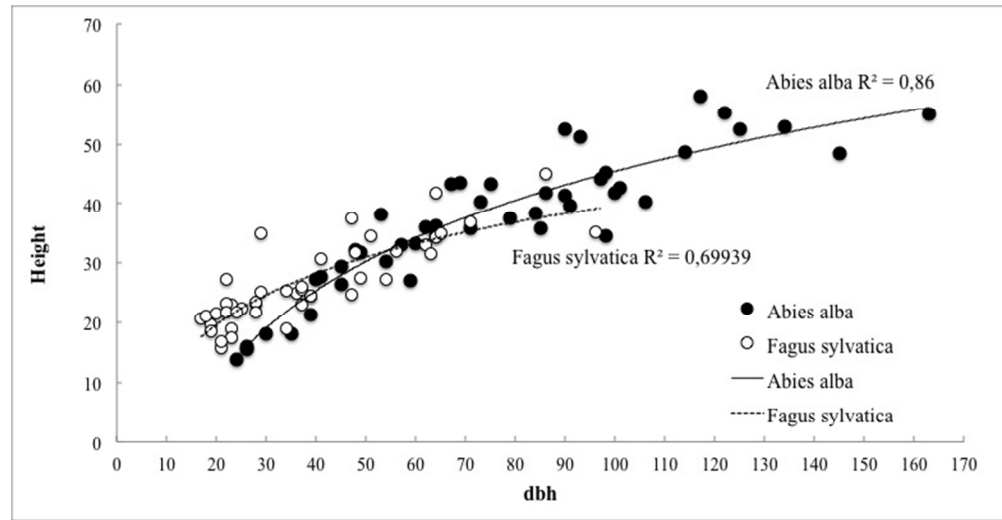


Fig. 5. Diameter-height relationships in beech and silver fir. The diameters are measured at the breast height (dbh)
276x142mm (72 x 72 DPI)

1
2
3
4
5
6
7
8
9
10
11
12
13
14
15
16
17
18
19
20
21
22
23
24
25
26
27
28
29
30
31
32
33
34
35
36
37
38
39
40
41
42
43
44
45
46
47
48
49
50
51
52
53
54
55
56
57
58
59
60

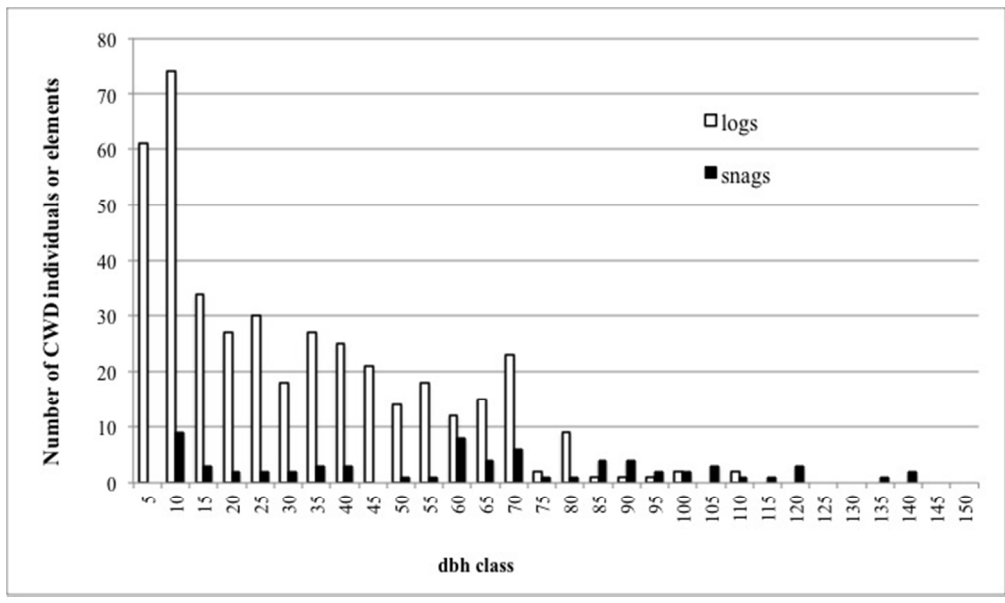


Fig. 6. Log and snag size distribution
253x149mm (72 x 72 DPI)

Review Only

1
2
3 1 Running title: Biogradska Gora old-growth forest
4
5
6
7 3
8

9
10 4 CORRESPONDENCE: Renzo Motta, University of Turin, Department of Agriculture, Forestry and
11
12 5 Food Sciences, Via Leonardo da Vinci 44, Grugliasco, Italy, renzo.motta@unito.it, +390116705538
13
14 6

15
16
17
18
19
20
21
22
23
24
25
26
27
28
29
30
31
32
33
34
35
36
37
38
39
40
41
42
43
44
45
46
47
48
49
50
51
52
53
54
55
56
57
58
59
60

For Peer Review Only

1
2
3 1
4
5 2 Structure, spatio-temporal dynamics and disturbance regime of the mixed beech-silver fir-Norway
6
7 3 spruce old-growth forest of Biogradska Gora (Montenegro).
8
9
10 4
11
12 5

13
14 6 Motta R.¹, Garbarino M.², Berretti R.¹, Bjelanovic I.³, Borgogno Mondino E.¹, Čurović M.⁴, , Keren
15
16 7 S.⁵, Meloni F.¹, Nosenzo, A.¹

17
18 8 ¹University of Turin, Department of Agriculture, Forestry and Food Sciences, Via Leonardo da
19
20 9 Vinci 44, Grugliasco, Italy

21
22
23 10 ²Università Politecnica delle Marche, Department D3A, Via delle Brece Bianche, I-60131, Ancona,
24
25 11 Italy

26
27 12 ³University of Belgrade - Faculty of Forestry, Kneza Visislava 1, Belgrade, Serbia

28
29 13 ⁴University of Montenegro, Biotechnical Faculty, Mihaila Lalica 1, Podgorica, Montenegro

30
31 14 ⁵Faculty of Forestry, University of Banja Luka, Vojvode Step Stepanovica 75 a, Banja Luka,
32
33 15 Bosnia and Herzegovina

34
35
36 16

37
38 17

39
40 18 Abstract

41
42
43 19

44
45 20 The structure and the spatio-temporal dynamics of the mixed beech-silver fir-Norway spruce old-
46
47 21 growth forest of Biogradska Gora (Montenegro) have been analysed at different spatial scales: at
48
49 22 the landscape scale, using a high resolution SPOT5 satellite image and at the stand level with an
50
51 23 intensive field survey. This remote sensing approach has been used to obtain a land cover map in
52
53 24 order to define the main vegetation types and to detect the large canopy gaps (> 150 m²). The
54
55 25 structural characteristics have been delineated in a 50 ha study area in which a regular 120 m grid
56
57 26 was superimposed over a 1:10000 raster map and 30 sampling points have been obtained. The
58
59
60

1 forest is characterized by a high volume of living trees ($1029.6 \text{ m}^3\text{ha}^{-1}$) and coarse woody debris
2 ($420.4 \text{ m}^3\text{ha}^{-1}$) and by small-scale disturbances (individual trees to small groups) with a low
3 incidence of intermediate disturbances (18 forest canopy gaps $> 150 \text{ m}^2$ over 1230 ha). The two
4 approaches have proved useful to delineate the spatio-temporal dynamics. The Biogradska Gora
5 forest dynamics are dominated by very small-scale processes, which are partially autogenic and
6 partially caused by allogenic factors. The influence of large scale or intermediate disturbances has
7 shown to be negligible.

8
9
10
11
12
13
14
15
16
17
18
19
20
21
22
23
24
25
26
27
28
29
30
31
32
33
34
35
36
37
38
39
40
41
42
43
44
45
46
47
48
49
50
51
52
53
54
55
56
57
58
59
60

9 Keywords

10 Old-growth forest, satellite images, forest structure, gaps, disturbances, coarse-woody debris

1
2
3 1 Introduction
4
5 2
6
7 3 The structural analyses of forest ecosystems have shown that the temporal and spatial interplay
8
9 4 between individual tree mortality and larger disturbances at varying scales, from small gaps to
10
11 5 landscapes, creates a multitude of developmental pathways (Oliver & Larson 1996; Runkle 1982).
12
13 6 The type and number of developmental stages may depend on different spatial scales, forest species
14
15 7 and on the disturbance regime (Alessandrini et al. 2011; Franklin et al. 2002; Král et al. 2010)
16
17 8 before the stage known as “old-growth stage” is reached (Franklin & Spies 1991). There are many
18
19 9 definitions of this stage but most researchers agree that old-growth stands develops after long
20
21 10 periods without any relevant human impact and major natural disturbances and show three main
22
23 11 structural characteristics: old and large trees, abundant coarse woody debris in different decay
24
25 12 stages and a multilayered vertical structure (Foster et al. 1996; Franklin 1993; Franklin & Van Pelt
26
27 13 2004; Motta 2002).
28
29 14 Characterizing the old-growth stage and the complete forest development cycle is particularly
30
31 15 difficult in regions, like central-southern Europe, in which the anthropogenic effects have been of
32
33 16 long duration and have interacted with natural factors so much that the effects of natural disturbance
34
35 17 and human activities are now almost impossible to distinguish (Barbati et al. 2012; Garbarino et al.
36
37 18 2009; Motta et al. 2010). In this region human land-use has been the most important driving force
38
39 19 behind the shaping of the landscape and the structure of the forest stands (Farrell et al. 2000;
40
41 20 Garbarino et al. 2013). The forests have been intensively managed or cleared, and even in the most
42
43 21 remote places there are signs of past grazing, litter collecting and charcoal production (Diaci et al.
44
45 22 2010; Gimmi et al. 2008).
46
47 23 The human impact has not been uniform over the entire region and substantial tracts of virtually
48
49 24 untouched forests survived until the second part of the 19th century (Peterken 1996). In that period
50
51 25 improvements in transportation and harvesting technology as well as the increasing demand for
52
53 26 wood and fuel from industry have drastically reduced extent of the last remains of virgin forests. In
54
55
56
57
58
59
60

1
2
3 1 the same time Forest administrations started to establish Forest reserves as hunting reserves or to
4
5 2 preserve some parts of virgin forests (Diaci 1999). Most of these reserves were of relatively small,
6
7 3 sometimes just a few hectares, while moderately sized and large reserves, from hundreds to several
8
9 4 thousands of hectares, were extremely rare (Schuck & Hytönen 2000). Natural disturbances may
10
11 5 operate at very different scales and the disturbance size could often be larger than the size of a small
12
13 6 forest reserve. In order to accommodate these processes each forest reserve should be tailored to
14
15 7 minimum size thresholds in order to allow all the disturbances the subsequent dynamic stages to
16
17 8 develop. In small forest reserves effects can influence several factors and processes, such as the
18
19 9 forest microclimate, tree mortality, animal habitat use, and the invasion of alien species (Gascon et
20
21 10 al. 2000; Laurance et al. 2002). As a consequence most of the small reserves in central-southern
22
23 11 Europe are not potentially able to capture the whole natural temporal and spatial variability (Cissel
24
25 12 et al. 1999; Fraver et al. 2009; Landres et al. 1999) and large, well preserved forests are extremely
26
27 13 important, from the scientific point of view, because of their potential role in the reconstruction of
28
29 14 both the disturbance regime and the development stages of the forest with special reference to the
30
31 15 old-growth stage (Burrascano et al. 2013; Marchetti et al. 2010; Ziaco et al. 2012).

32
33
34
35
36 16 One of the largest long-term preserved forests in central-southern Europe is in the “Biogradska
37
38 17 Gora” National park (Montenegro). The history of measures adopted to protect this forest dates
39
40 18 back to 1885 when, after the liberation of Kolašin from the Turks in 1878, the local people offered
41
42 19 the Biogradska Gora forests to the duke (later the king of Montenegro) Nikola Petrović (Bilovitz et
43
44 20 al. 2009). At that time most of the Bjelasica mountains forests were virgin or near-virgin forests that
45
46 21 had never been significantly influenced by human activity (Peterken 1996). At the beginning, the
47
48 22 forest was used as a royal hunting reserve, and in 1952 it was proclaimed a National park. In the
49
50 23 core area of the park, there is the valleys of the Biogradska and Jezerštica rivers surrounding
51
52 24 Biogradsko Lake, there are several different forest types, but the most important one is the mixed
53
54 25 beech (*Fagus sylvatica* L.) and silver fir (*Abies alba* Mill.) type, with sparse Norway spruce (*Picea*
55
56 26 *abies* (L.) Karst.) (Andjelić et al. 2012; Čurović et al. 2011a; Čurović et al. 2011b). The other
57
58
59
60

1 relevant forest species that are present are: sycamore maple (*Acer pseudoplatanus* L. and *Acer*
2 *platanoides* L.), mountain ash (*Fraxinus excelsior* L.), rowan (*Sorbus aucuparia* L.) and wych elm
3 (*Ulmus montana* With.).

4 The main purpose of this study was to analyse the structure and dynamics of the beech, silver fir
5 and Norway spruce mixed Biogradska Gora old-growth forest using both remote sensing and
6 intensive ground control in order to: 1) describe its main structural characteristics, 2) reconstruct the
7 spatio-temporal disturbance dynamics and 3) compare the structure and dynamics of this forest with
8 other central-southern European mixed old-growth forests.

9 10 11 12 13 14 15 16 17 18 19 20 21 22 23 24 25 Material and methods

26 27 28 29 a) Study site

30 This research was conducted in the Biogradska Gora National park in the north-western part of the
31 Bjelasica mountain range in the Dinaric Alps (Montenegro). This forest is the largest of a network
32 of remaining virgin forest of the same forest type that can be found in the Balkans peninsula from
33 Slovenia to Montenegro (Anić & Mikac 2008; Diaci et al. 2010; Maunaga 2001; Motta et al. 2011;
34 Nagel & Svoboda 2008).

35 The lowest part of the park is in the Tara valley (about 830 a.s.l.) while the highest part is the Crna
36 Glava peak (2139 m a.s.l.). The park covers an area of 5650 ha (Fig. 1). Different forest categories
37 exist within the park but the most important ones are a) pure beech and b) mixed beech, silver fir
38 and Norway spruce. The annual average precipitation at Biogradsko lake (1093 m a.s.l.) is 1962
39 mm, with a maximum in November and a minimum in July. The mean annual temperature is
40 around 5 °C. The bedrock is mainly made up of eruptive rocks (Čurović 2011). Two forest types
41 were identified in the mixed silver fir, beech and spruce forest on the basis of phytosociological
42 relevés.: *Abieti-Fagetum dinaricum* Treg. 1957, and *Piceeto-Abieti-Fagetum s. lat.* Treg. 1957, the
43
44
45
46
47
48
49
50
51
52
53
54
55
56
57
58
59
60

1
2
3 1 main difference between these being the occurrence of Norway spruce. According to the profiles
4
5 2 and to the physical and chemical characteristics of soils they can be classified as brown acid –
6
7 3 dystric cambisol (Čurović 2011).
8
9 4

10
11 5 b) Remote sensing

12 6 Owing the absence of forest maps a satellite image was used to analyse the vegetational cover and
13
14 7 to identify the best site for the intensive study area. The study area for the remote sensing analysis
15
16 8 comprised the core areas of the Biogradska Gora forest reserve (5883 ha). A high-resolution SPOT5
17
18 9 satellite image, acquired on May 14th 2007, was used. The acquired image was of the A1 type, and
19
20 10 it included the panchromatic band (480-710 nm) with a 2.5 m GSD (Ground Sample Distance);
21
22 11 three multispectral bands (Green, 500-590 nm; Red, 610-680 nm; Near Infrared, 780-890 nm) with
23
24 12 a 10 m GSD and one Short-wavelength infrared (1580-1750 nm) with an original 20 m GSD, but
25
26 13 supplied already resampled up to 10 m. The SPOT5 multispectral data were initially calibrated as
27
28 14 reflectance at-the-ground values using the Gain and Offset values, as reported in the metadata file
29
30 15 of the images. Atmospheric effects were taken into account and minimized using the Dark
31
32 16 Subtraction algorithm (simplified approach) available in the ENVI 4.7 software (ITT 2009). The
33
34 17 satellite image was orthoprojected using the rigorous Toutin model for SPOT5 data implemented in
35
36 18 the Orthoengine module of the PCI Geomatics software. Thirteen 3D ground control points (GCPs)
37
38 19 surveyed by a LEICA GPS System 1200 (GX 1230 receiver), were used in this process. The GPS
39
40 20 double frequency measurements were post-processed using the Sarajevo permanent station which is
41
42 21 part of the EUREF network (Bruyninx et al. 2012). The resulting planimetric accuracy was suitable
43
44 22 for a 1:10000 scale map (1.3 m at BGO). The Digital Elevation Model used for the orthoprojection
45
46 23 was the free available NASA/METI ASTER Global Terrain Model, which has a geometric
47
48 24 resolution of 30 m and a vertical Root Mean Squared Error (RMSE) of about 9 m. Both the
49
50 25 panchromatic and the multispectral bands were orthoprojected and a RMSE for the GCPs of 1.54 m
51
52 26 was obtained. As the ground survey was mainly planned and performed to obtain a traditional forest
53
54
55
56
57
58
59
60

1
2
3 1 structure characterization and not aimed at gathering information concerning the prevalent forest
4
5 2 classes from a remote sensing point of view, the resulting data were considered not to be
6
7 3 statistically or spatially suitable for the definition of the robust region of interest for use in a
8
9 4 supervised classification.

10
11 5 Furthermore ground survey data were used to interpret and preliminarily validate the result of an
12
13 6 unsupervised pixel-based classification. The classified images were the SPOT5 multispectral ones
14
15 7 (GSD = 10 m) and the ISODATA algorithm was adopted using the following settings: number of
16
17 8 classes = 5 to 10; Pixel % for convergence = 2%; max class STD = 0.25; Minimum Class Distance
18
19 9 = 0.5; Minimum Number of pixels in each class = 100. This operation was performed in ENVI 4.7
20
21 10 and a land cover map composed by five categories after 32 iterations was obtained. On the basis of
22
23 11 the ground data the clusters were interpreted as conifers, broadleaves, open/grassland, water bodies
24
25 12 and unvegetated areas. The satellite images were also used for canopy gap detection (canopy gaps,
26
27 13 sensu Runkle 1982, larger than 150 m²). For this task an on-screen photointerpretation was
28
29 14 performed (Garbarino et al. 2012)
30
31
32
33

34 15 35 36 16 c) Forest structure

37
38 17 The forest structure survey area (50 ha) was located in a north-eastern slope (centered at 42.53'13 N
39
40 18 and 19.36'33 E) at an elevation ranging from 1210 to 1443 m a.s.l. A regular 120 m grid was
41
42 19 superimposed to the 1:10000 raster map and 30 sampling points were thus obtained (Fig. 2). Four
43
44 20 types of measurements were applied at each sampling point (Motta et al. 2011): (a1) the species and
45
46 21 diameter at breast height (dbh, about 130 cm) to the nearest 0.01 m for all the living trees (dbh \geq 7.5
47
48 22 cm) was recorded in a 615.5 m² circular plot (radius = 14 m); (a2) the species and height of each
49
50 23 regeneration or suppressed individual (h > 10 cm and dbh < 7.5 cm) was recorded in a 113.1 m²
51
52 24 round plot (radius = 6 m); (a3) the diameter of each log (diameter > 5 cm) crossing a 50 m line
53
54 25 intersect oriented northward from the center of the sampling point (Van Wagner 1968), was
55
56 26 measured (Motta et al. 2006) and (a4) the stumps (diameter at the ground and diameter at the top
57
58
59
60

1
2
3 1 for diameter at the ground > 5 cm) and the snags/standing dead trees (dbh and height of the top for
4
5 2 dbh>7,5 cm) in a 50 x 4 m rectangular plot centered on the previous line were also measured. For
6
7 3 each element of CWD (logs, snags, standing dead trees and stumps) species (when possible) and
8
9 4 decay class (Nagel & Svoboda 2008) were recorded (class 1 fresh, class 5 very old). Four-five tree
10
11 5 heights, covering different species and diameter classes, were measured at each sampling point. The
12
13 6 shape of each diameter distribution was determined by examining the significance and the sign of
14
15 7 the model parameters (Alessandrini et al. 2011; Janowiak et al. 2008). The volume of the living and
16
17 8 standing dead trees was calculated on the basis of local forest management volume tables. The
18
19 9 volume of the logs, stumps and snags was calculated using methods that have been described in
20
21 10 Motta et. al., 2006. Owing to the protection status of the forest it was not possible to core any of the
22
23 11 living trees in order to reconstruct the age structure and to detect the releases. The maximum age for
24
25 12 the dominant Norway spruce, silver fir and beech trees was estimated counting the tree rings on the
26
27 13 stumps of recently broken off dominant trees.
28
29
30
31
32
33

34 Results

35 a) Forest cover and gaps

36
37 17 Most of the Biogradska valley is covered by forest (65.5%). Mixed conifer and broadleaf stands
38
39 18 (*Abieti-Fagetum dinaricum* and *Piceeto-Abieti-Fagetum*), which are the subject of this study, cover
40
41 19 1230 ha at an altitude ranging from 1200 to 1500 m a.s.l. Pure broadleaf stands were detected at
42
43 20 lower and at the uppermost elevations while pure conifer stands were observed in the montane and
44
45 21 subalpine belts (Fig. 2). The remaining land cover types were unvegetated areas (21.5%) and
46
47 22 grasslands (12.5%). A total of 53 openings, 18 forest canopy gaps sensu Runkle (1982) and 35
48
49 23 openings due to the geomorphological processes (e.g. landslides, rocks) or other processes unrelated
50
51 24 to the forest dynamics, were found in the mixed *Abies-Picea-Fagus* forest and within the 1200-1500
52
53 25 m a.s.l. altitudinal belt,. The average size of the forest canopy gaps was about 985 m² and the
54
55 26 median size was 672 m². A high gap size variability was observed ranging from 169 to 3025 m².
56
57
58
59
60

1
2
3 14
5 2 b) Forest structure6
7 3 The density of the live canopy trees was 412 ha⁻¹ (Tab. 1). The volume of living trees was 1029.68
9 4 m³ha⁻¹ and the basal area was 60.1 m²ha⁻¹. The density of regeneration was 3102 individuals ha⁻¹.10
11 5 The diameter distribution (Fig. 3) exhibited a rotated sigmoidal form (P < 0.05) which is typical of
12
13 6 old-growth stands (Alessandrini et al. 2011; Janowiak et al. 2008).14
15 7 All the sampled plots had a multilayered vertical structure but the species distribution was not
16
17 8 homogeneous over the different size classes. Beech was rather dominant among the regeneration,
18
19 9 small and intermediate trees (Fig. 4). Silver fir, instead, was dominant in the large trees. The20
21 10 diameter-height relationships in the two most represented species, that are beech and silver fir,
22
23 11 showed that the beech height is higher in smaller diameters compared to silver fir but an opposite24
25 12 relationship can be observed for intermediate and large diameters (Fig. 5). As expected the diameter
26
27 13 and height ranges for silver fir were greater than for the beech.28
29 14 The CWD volume was 420 m³ha⁻¹ (Tab. 2) representing 40.8% of the volume of living trees. The30
31 15 volume of logs (71.4%), within the total volume of CWD, was much greater than the volume of
32
33 16 snags/standing dead trees and stumps. As far as the CWD profile is concerned (Tab. 3), all the34
35 17 decay classes were represented, but decay class 4 was the modal value (38,3% of the total CWD)36
37 18 and it was followed by classes 3, 2, 5 and class 1 which represents the recent dead trees and which38
39 19 had a lower volume than the others. In the different CWD types, decay class 4 was the modal value40
41 20 for stumps (87.3%) and logs (41.7%), but not for snags where the modal class was the third (24.8%).42
43 21 The absence of bark and the decay rate made the identification of the species problematic for most44
45 22 of the samples in classes 3, 4 and 5 (more than 80% of the samples). The logs were mainly found in46
47 23 the small-intermediate tree size (diameter < 70 cm) while the snags were dominant in the large48
49 24 diameter size (> 70 cm) (Fig. 6).50
51 25 The large living trees in the studied area were among the largest and highest observed in this region52
53 26 (Holeksa et al. 2009), reaching 163 cm of dbh and 58 m height for silver fir and 152 cm dbh and 62

1 m height for Norway spruce. The maximum tree age observed in the recent natural stumps was more than 400 years for silver fir and Norway spruce and more than 300 years for beech.

Discussion

The Biogradska Gora mixed *Abies-Picea-Fagus* forest is one of the largest old-growth forest remaining (1230 ha) in central-southern Europe. It shows the typical structural characteristics of old-growth forests: large (> 150 cm dbh) and old trees (>400 y), relevant volumes of living tree (1029.6 m³ha⁻¹) and of coarse woody debris (420.6 m³ha⁻¹) in different decay classes and with horizontal and vertical structural complexity (Franklin & Spies 1991). The volumes of living trees and of CWD are among the highest observed so far in central-southern Europe (Tab. 4). The studied area is very structurally complex but relatively uniform in terms of internal variability as can be seen from the relatively small range and SD of each analyzed parameter (Tabs. 1, 2). According to the number of individuals, beech is the dominant species but, from the volume point of view, the most represented species is silver fir. Norway spruce is scarce from the regeneration to the small and intermediate diameters while it is the second species represented in the dominant layer in terms of volume and of number of individuals. The other species (mainly sycamore maple, mountain ash and wych elm) only occur in the regeneration (where they are relatively abundant) and in the small and intermediate trees diameter classes but are absent in the dominant layers (large trees). This kind of irregular species distribution has been observed in other old-growth forests of the same type thus showing a common development pattern (Mikac et al. 2013; Motta et al. 2011; Nagel & Svoboda 2008). Compared to silver fir and Norway spruce, beech and the other broadleaves are more competitive in a higher light environment, due to their faster height growth (Burschel & Mosandl 1985; Rozenbergar et al. 2007). On the other hand, if too much time is spent in the shade, beech and the other broadleaves may lose their ability to produce an upright stem (Diaci & Kozjek 2005) and the beech crown becomes plagiotropic, or flat (Rozenbergar et al. 2007), while other broadleaves develop an umbrella-like crown (Petriřan et al. 2009). In a disturbance regime characterized by

1
2
3 1 small-scale disturbances, where there is not enough light for new regeneration establishment and
4
5 2 the gap fillers are mainly previously suppressed trees, it is much more difficult for beech and other
6
7 3 broadleaves to compete with silver fir and spruce. In fact silver fir and Norway spruce have a high
8
9 4 capacity to tolerate shading and suppression, and can show a vigorous growth response after release
10
11 5 (Ferlin 2002) thus making beech under-represented in the dominant layers (Schütz 1992; 2001).
12
13 6 The persistence of less shade tolerant species such as maple, ash and elm, is linked to disturbances
14
15 7 that create canopy openings $> 400 \text{ m}^2$ (Nagel et al. 2010). A good indicator of former medium-
16
17 8 large gaps in the studied site was the presence of small maple sycamore stands, which were
18
19 9 observed between the plots and just outside the studied area. Maple is a more light demanding
20
21 10 species, compared to fir, beech or Norway spruce, and can access the canopy through its rapid early
22
23 11 growth in relatively large canopy gaps (Petritan et al. 2007). These small patches of mono-layered
24
25 12 maple stands have highlighted a different development process than the most represented mixed and
26
27 13 multilayered matrix. The same feature was observed in the same region in Lom (Motta et al. 2011)
28
29 14 and in Perućica (Nagel et al. 2014)
30
31
32
33
34 15 When the analysis was upscaled and the whole forest was observed through satellite images no
35
36 16 important differences were observed. The medium-large canopy gap ratio (gaps $> 150 \text{ m}^2$) was very
37
38 17 low ($< 0,2\%$) since only 18 forest canopy gaps were detected in 1230 ha of *Abies-Picea-Fagus*
39
40 18 forest. Since in previous studies the observed total canopy gap ratio (gaps $> 10 \text{ m}^2$) was between 15
41
42 19 and 20% for the same forest type (Bottero et al. 2011; Nagel & Svoboda 2008), only a very small
43
44 20 part of the canopy opening can be considered to be due to medium-large canopy gaps and most of
45
46 21 the canopy disturbances could be related to very small-scale events ($10\text{-}150 \text{ m}^2$) caused by both
47
48 22 autogenic and allogenic disturbances. Considering the size of the old-growth of Biogradska Gora it
49
50 23 was here assumed that it was possible to capture the full range of the structural spatio-temporal
51
52 24 variability (Cissel et al. 1999; Fraver et al. 2009; Landres et al. 1999). In the Biogradska Gora forest
53
54 25 it was not possible to exclude *a priori* that larger intermediate or stand replacing disturbances
55
56 26 occurred in the past (having a return time longer than the one studied) and that they are part of the
57
58
59
60

1
2
3 1 current disturbance regime. However if these events occur, they are rare and would only
4
5 2 temporarily modify the species composition and the structure in the context of the long-term history
6
7 3 of small scale gap dynamics (Romme et al. 1998; Sprugel 1991). The fact that some long-term
8
9 4 research has shown that the total volume of living trees over long periods is relatively stable despite
10
11 5 the occurrence of both small and intermediate disturbances in Dinaric beech-fir old-growth forests
12
13 6 (Diaci et al. 2011) and in a mixed beech-fir-Norway spruce forest (Motta et al. 2011) would seem to
14
15 7 support this hypotheses. On the bases of the previous evidence, it is possible to state that the forest
16
17 8 dynamics in Biogradska Gora are dominated by very small-scale processes, partially autogenic and
18
19 9 partially allogenic. The influence of large scale or intermediate disturbances are negligible. In other
20
21 10 forest types within the same region it has been observed that the disturbance regime can vary from
22
23 11 large stand-replacing disturbances e.g. severe windstorms followed by insect outbreaks in montane
24
25 12 and subalpine Norway spruce forests (Svoboda et al. 2013) to intermediate disturbances e.g.
26
27 13 windstorms in montane beech, silver fir forests (Nagel & Diaci 2006) and to small-scale autogenic
28
29 14 processes with scattered intermediate wind disturbances (Motta et al. 2011). The Biogradska Gora
30
31 15 forest can be placed at the far end of a gradient that ranges from forests controlled by stand-
32
33 16 replacing disturbances to those where very small-scale processes dominate. This phase of the
34
35 17 development, which is the typical old-growth stage, can last for a relatively long period of time
36
37 18 (evidence exists of for some centuries, but it could be even longer) even though the authors are well
38
39 19 aware of the fact than when different spatial and temporal scales are used the observed process
40
41 20 could be more complex (Turner et al. 1993). In fact over the last decade, the accumulation of
42
43 21 evidence has shown that disturbances are key processes in forest ecosystem dynamics but, during
44
45 22 the same period, in some regions and for some forest types e.g. mixed forests in the montane belt of
46
47 23 the Biogradska Gora old-growth forest, a relatively stable structure can persist for relatively long
48
49 24 periods (Motta et al. 2011; Parish & Antos 2004; 2006).
50
51
52
53
54
55
56
57
58
59
60

1
2
3 1 Acknowledgements

4
5 2 Spot Image Inc. are gratefully acknowledged for having provided the satellite imagery and image
6
7 3 processing systems (Planet Action project: Bosnian old-growth forests). We are grateful to the
8
9 4 Biogradska Gora National park administration for providing access to the Forest Reserve. We
10
11 5 would like to thank the two anonymous reviewers for their useful suggestions concerning an earlier
12
13 6 version of the manuscript and Marguerite Jones for the final language editing.
14
15

16
17
18 8 References

- 19
20 9 Alessandrini A, Biondi F, Di Filippo A, Ziaco E, Piovesan G. 2011. Tree size distribution at
21 10 increasing spatial scales converges to the rotated sigmoid curve in two old-growth
22 11 beech stands of the Italian Apennines. *For Ecol Manage* 262: 1950-62.
- 23 12 Andjelić M, Dees M, Pantić D, Borota D, Šljukić B, Čurović M. 2012. Status of forest resources of
24 13 Montenegro. *Agriculture & Forestry* 57: 39-52.
- 25 14 Anić I, Mikac S. 2008. Structure, texture and regeneration of dinaric beech-fir virgin forest of
26 15 Čorkova uvala. *Šumarski List* 132: 505-15.
- 27 16 Barbati A, Salvati R, Ferrari B, Di Santo D, Quatrini A, Portoghesi L, Travaglini D, Iovino F,
28 17 Nocentini S. 2012. Assessing and promoting old-growthness of forest stands: Lessons
29 18 from research in Italy. *Plant biosyst* 146: 167-74.
- 30 19 Bilovitz PO, Knežević B, Stešević D, Mayrhofer H. 2009. Lichenized and lichenicolous fungi
31 20 from Bjelasica (Montenegro) with special emphasis on the Biogradska Gora National
32 21 Park. *Bibliotheca Lichenologica* 99: 67-80.
- 33 22 Bottero A, Garbarino M, Dukić V, Govedar Z, Lingua E, Nagel TA, Motta R. 2011. Gap-phase
34 23 dynamics in the old growth forest of Lom (Bosnia-Herzegovina). *Silva Fennica* 45: 865-
35 24 73.
- 36 25 Bruyninx C, Habrich H, Söhne W, Kenyeres A, Stangl G, Völksen C. 2012. Enhancement of the
37 26 EUREF Permanent Network Services and Products. In *Geodesy for Planet Earth*, eds
38 27 Kenyon, S, Pacino, MC and Marti, U, 27-34: Springer Berlin Heidelberg.
- 39 28 Burrascano S, Keeton WS, Sabatini FM, Blasi C. 2013. Commonality and variability in the
40 29 structural attributes of moist temperate old-growth forests: A global review. *For Ecol*
41 30 *Manage* 291: 458-79.
- 42 31 Burschel P, Mosandl R. 1985. Waldbau angesichts neuartiger Wladschäden. In *Die Sache Mit*
43 32 *dem Wald*, 269-80.
- 44 33 Cissel JH, Swanson F, Weisberg PJ. 1999. Landscape management using historical reference
45 34 fire regimes: Blue River, Oregon. *Ecol Appl* 9: 1217-31.
- 46 35 Clements FE. 1936. Nature and Structure of the Climax. *J Ecol* 24: 252-84.
- 47 36 Čurović M. 2011. Forest types in National Park Biogradska Gora (Dissertation) Available from:
48 37 Faculty of Forestry, University of Belgrade.
- 49 38 Čurović M, Medarević M, Cvjetičanin R, Knežević M. 2011a. Major characteristics of mixed fir
50 39 and beech virgin forests in the National park Biogradska gora in Montenegro. *Bulletin*
51 40 *of the Faculty of Forestry* 103: 157-72.
- 52 41 Čurović M, Medarević M, Pantić D, Spalević V. 2011b. Major types of mixed forests of spruce,
53 42 fir and beech in Montenegro. *Centralb gesamte Forstwes* 128: 93-111.

- 1
2
3 1 Diaci J ed. 1999. Virgin Forests and Forest Reserves in Central and East European Countries.
4 2 Ljubljana.
- 5 3 Diaci J, Kozjek L. 2005. Beech sapling architecture following small and medium gap
6 4 disturbances in silver fir-beech old-growth forests in Slovenia. *Schweiz Z Forstwes*
7 5 156: 481-86.
- 8 6 Diaci J, Rozenbergar D, Anic I, Mikac S, Saniga M, Kuchel S, Visnjic C, Ballian D. 2011. Structural
9 7 dynamics and synchronous silver fir decline in mixed old-growth mountain forests in
10 8 Eastern and Southeastern Europe. *Forestry* 84: 479-91.
- 11 9 Diaci J, Rozenbergar D, Boncina A. 2010. Stand dynamics of Dinaric old-growth forest in
12 10 Slovenia: Are indirect human influences relevant? *Plant biosyst* 144: 194-201.
- 13 11 Farrell EP, Führer E, Ryan D, Andersson F, Hüttl R, Piussi P. 2000. European forest
14 12 ecosystems: building the future on the legacy of the past. *For Ecol Manage* 132: 5-20.
- 15 13 Ferlin F. 2002. The growth potential of understorey silver fir and Norway spruce for uneven-
16 14 aged forest management in Slovenia. *Forestry* 75: 375-83.
- 17 15 Foster DR, Orwig DA, Mclachlan JS. 1996. Ecological and conservation insights from
18 16 reconstructive studies of temperate old-growth forests. *Trends Ecol Evol* 11: 419-24.
- 19 17 Franklin J, Spies TA, Pelt RV, Carey AB, Thornburgh DA, Berg DR, Lindenmayer DB, Harmon
20 18 ME, Keeton WS, Shaw DC, Bible K, Chen J. 2002. Disturbance and structural
21 19 development of natural forest ecosystems with silvicultural implications, using
22 20 Douglas-fire forests as an example. *For Ecol Manage* 155: 399-423.
- 23 21 Franklin JF. 1993. Lesson from old-growth. *J For* 91: 10-13.
- 24 22 Franklin JF, Spies TA. 1991. Ecological definitions of old-growth Douglas-fir forests. In *Wildlife*
25 23 *and vegetation of unmanaged Douglas-fir forests*, eds Ruggiero, LF, Aubry, KB, Carey,
26 24 AB and Huff, MH, 61-69. Portland: USDA Forest Service, Pacific Northwest Research
27 25 Station.
- 28 26 Franklin JF, Van Pelt R. 2004. Spatial Aspects of Structural Complexity in Old-Growth Forests. *J*
29 27 *For* 102: 22-28.
- 30 28 Fraver S, White AS, Seymour RS. 2009. Natural disturbance in an old-growth landscape of
31 29 northern Maine, USA. *J Ecol* 97: 289-98.
- 32 30 Garbarino M, Borgogno Mondino E, Lingua E, Nagel T, Dukić V, Govedar Z, Motta R. 2012. Gap
33 31 disturbances and regeneration patterns in a Bosnian old-growth forest: a multispectral
34 32 remote sensing and ground-based approach. *Ann For Sci* 69: 617-25.
- 35 33 Garbarino M, Lingua E, Weisberg P, Bottero A, Meloni F, Motta R. 2013. Land-use history and
36 34 topographic gradients as driving factors of subalpine *Larix decidua* forests. *Landsc Ecol*
37 35 28: 805-17.
- 38 36 Garbarino M, Weisberg PJ, Motta R. 2009. Interacting effects of physical environment and
39 37 anthropogenic disturbances on the structure of European larch (*Larix decidua* Mill.)
40 38 forests. *For Ecol Manage* 257: 1794-802.
- 41 39 Gascon C, Williamson GB, Da Fonseca GaB. 2000. Receding Forest Edges and Vanishing
42 40 Reserves. *Science* 288: 1356-58.
- 43 41 Gimmi U, Bürgi M, Stuber M. 2008. Reconstructing anthropogenic disturbance regimes in
44 42 forest ecosystems: a case study from the Swiss Rhone Valley. *Ecosystems* 11: 113-24.
- 45 43 Holeksa J, Saniga M, Szwagrzyk J, Czerniak M, Staszynska K, Kapusta P. 2009. A giant tree
46 44 stand in the West Carpathians-An exception or a relic of formerly widespread
47 45 mountain European forests? *For Ecol Manage* 257: 1577-85.
- 48 46 Janowiak MK, Nagel LM, Webster CR. 2008. Spatial Scale and Stand Structure in Northern
49 47 Hardwood Forests: Implications for Quantifying Diameter Distributions. *For Sci* 54:
50 48 497-506.

1
2
3
4
5
6
7
8
9
10
11
12
13
14
15
16
17
18
19
20
21
22
23
24
25
26
27
28
29
30
31
32
33
34
35
36
37
38
39
40
41
42
43
44
45
46
47
48
49
50
51
52
53
54
55
56
57
58
59
60

- 1 Král K, Vrška T, Hort L, Adam D, Šamonil P. 2010. Developmental phases in a temperate
2 natural spruce-fir-beech forest: determination by a supervised classification method.
3 Eur J For Res 129: 339-51.
- 4 Landres PB, Morgan P, Swanson FJ. 1999. Overview of the use of natural variability concepts
5 in managing ecological systems. Ecol Appl 9: 1179-88.
- 6 Laurance WF, Lovejoy TE, Vasconcelos HL, Bruna EM, Didham RK, Stouffer PC, Gascon C,
7 Bierregaard RO, Laurance SG, Sampaio E. 2002. Ecosystem Decay of Amazonian Forest
8 Fragments: a 22-Year Investigation. Cons Biol 16: 605-18.
- 9 Marchetti M, Tognetti R, Lombardi F, Chiavetta U, Palumbo G, Sellitto M, Colombo C, Iovieno P,
10 Alfani A, Baldantoni D, Barbati A, Ferrari B, Bonacquisti S, Capotorti G, Copiz R, Blasi C.
11 2010. Ecological portrayal of old-growth forests and persistent woodlands in the
12 Cilento and Vallo di Diano National Park (southern Italy). Plant biosyst 144: 130-47.
- 13 Maunaga Z. 2001. Management plan for forests with special purpose in the strict natural
14 reservations "Janj" and "Lom". Banja Luka: Bosnia and Herzegovina Forestry project.
15 Republic of Srpska.
- 16 Mikac S, Klopč M, Anić I, Hasenauer H. 2013. Using the tree growth model MOSES to assess the
17 dynamics of Dinaric old-growth mixed beech-fir forest ecosystems. Plant biosyst 147:
18 664-71.
- 19 Motta R. 2002. Old-growth forests and silviculture in the Italian Alps: the case-study of the
20 strict reserve of Paneveggio (TN). Plant biosyst 136: 223-32.
- 21 Motta R, Berretti R, Castagneri D, Dukić V, Garbarino M, Govedar Z, Lingua E, Maunaga Z,
22 Meloni F. 2011. Toward a definition of the range of variability of central European
23 mixed *Fagus-Abies-Picea* forests: the nearly steady-state forest of Lom (Bosnia and
24 Herzegovina). Can J For Res 41: 1871-84.
- 25 Motta R, Berretti R, Castagneri D, Lingua E, Nola P, Vacchiano G. 2010. Stand and coarse
26 woody debris dynamics in subalpine Norway spruce forests withdrawn from regular
27 management. Ann For Sci 67: 803p1_03p8.
- 28 Motta R, Berretti R, Lingua E, Piussi P. 2006. Coarse woody debris, forest structure and
29 regeneration in the Valbona Forest Reserve, Paneveggio, Italian Alps. For Ecol Manage
30 235: 155-63.
- 31 Nagel TA, Svoboda M, Rugani T, Diaci J. 2010. Gap regeneration and replacement patterns in
32 an old-growth *Fagus-Abies* forest of Bosnia-Herzegovina. Plant Ecol 208: 307-18.
- 33 Nagel TA, Diaci J. 2006. Intermediate wind disturbance in an old-growth beech-fir forest in
34 southeastern Slovenia. Can J For Res 36: 629-38.
- 35 Nagel TA, Svoboda M. 2008. Gap disturbance regime in an old-growth *Fagus-Abies* forest in
36 the Dinaric Mountains, Bosnia-Herzegovina. Can J For Res 38: 2728-37.
- 37 Nagel TA, Svoboda M, Kobal M. 2014. Disturbance, life history traits, and dynamics in an old-
38 growth forest landscape of southeastern Europe. Ecol Appl. DOI: 10.1890/13-0632.1
- 39 Oliver CD, Larson BC. 1996. Forest Stand Dynamics. New York: John Wiley & Sons.
- 40 Parish R, Antos JA. 2004. Structure and dynamics of an ancient montane forest in coastal
41 British Columbia. Oecologia 141: 562-76.
- 42 Parish R, Antos JA. 2006. Slow growth, long-lived trees, and minimal disturbance characterize
43 the dynamics of an ancient montane forest in coastal British Columbia. Can J For Res
44 36: 2826-38.
- 45 Peterken GF. 1996. Natural woodland. Ecology and conservation in northern temperate
46 regions. Cambridge: Cambridge University Press.
- 47 Petričan A, Lüpke B, Petričan I. 2009. Influence of light availability on growth, leaf morphology
48 and plant architecture of beech (*Fagus sylvatica* L.), maple (*Acer pseudoplatanus* L.) and
49 ash (*Fraxinus excelsior* L.) saplings. Eur J For Res 128: 61-74.

- 1
2
3 1 Petritan AM, Von Lüpke B, Petritan IC. 2007. Effects of shade on growth and mortality of
4 2 maple (*Acer pseudoplatanus*), ash (*Fraxinus excelsior*) and beech (*Fagus sylvatica*)
5 3 saplings. *Forestry* 80: 397-412.
6 4 Romme WH, Everham EH, Frelich LE, Moritz MA, Sparks RE. 1998. Are Large, Infrequent
7 5 Disturbances Qualitatively Different from Small, Frequent Disturbances? *Ecosystems* 1:
8 6 524-34.
9 7 Rozenbergar D, Mikac S, Anic I, Diaci J. 2007. Gap regeneration patterns in relationship to light
10 8 heterogeneity in two old-growth beech fir forest reserves in South East Europe.
11 9 *Forestry* 80: 431-43.
12 10 Runkle JR. 1982. Patterns of disturbance in some old-growth mesic forest of eastern North-
13 11 America. *Ecology* 63: 1533-46.
14 12 Schuck A, Hytönen T. 2000. Forest Reserve Research Network. In *COST Action E4*, 195.
15 13 Schütz JP. 1992. Die waldbaulichen Formen und die Grenzen der Plenterung mit
16 14 Laubbaumarten. *Schweiz Z Forstwes* 143: 442-60.
17 15 Schütz JP. 2001. Opportunities and strategies of transforming regular forests to irregular
18 16 forests. *For Ecol Manage* 151: 87-94.
19 17 Sprugel DG. 1991. Disturbance, equilibrium, and environmental variability: What is "Natural"
20 18 vegetation in a changing environment? *Biol Cons* 58: 1-18.
21 19 Svoboda M, Janda P, Bače R, Fraver S, Nagel TA, Rejzek J, Mikoláš M, Douda J, Boublík K,
22 20 Šamonil P, Čada V, Trotsiuk V, Teodosiu M, Bouriaud O, Biriş AI, Sýkora O, Uzel P,
23 21 Zelenka J, Sedlák V, Lehejček J. 2013. Landscape-level variability in historical
24 22 disturbance in primary *Picea abies* mountain forests of the Eastern Carpathians,
25 23 Romania. *J Veg Sci*: DOI: 0.1111/jvs.12109
26 24 Turner MG, Romme WH, Gardner RH, O'Neill RV, Kratz TK. 1993. A revised concept of
27 25 landscape equilibrium: Disturbance and stability on scaled landscapes. *Landsc Ecol* 8:
28 26 213-27.
29 27 Van Wagner CE. 1968. The line intersect method in forest fuel sampling. *For Sci* 14: 20-26.
30 28 Ziaco E, Di Filippo A, Alessandrini A, Baliva M, D'andrea E, Piovesan G. 2012. Old-growth
31 29 attributes in a network of Apennines (Italy) beech forests: Disentangling the role of
32 30 past human interferences and biogeoclimate. *Plant biosyst* 146: 153-66.
33 31
34 32
35
36
37
38
39
40 33
41
42
43
44
45
46
47
48
49
50
51
52
53
54
55
56
57
58
59
60

Table 1. Structural characteristics (density, basal area, volume of living trees and density of regeneration) in the mixed silver fir, beech and Norway spruce Biogradska Gora old-growth forest

	Density [n ha ⁻¹]	Basal area [m ² ha ⁻¹]	Volume [m ³ ha ⁻¹]	Regeneration [n ha ⁻¹]
Silver fir	92 (22.3%)	34.1 (56.7%)	630.6 (61.2%)	299 (9.6%)
Beech	298 (72.3%)	18.7 (18.7%)	262.6 (25.5%)	1903 (61.2%)
Norway spruce	10 (2.4%)	5.6 (9.3%)	112.4 (10.9%)	46 (1.5%)
Sycamore maples	10 (2.4%)	1.5 (1.5%)	23.7 (2.3%)	511 (16.4%)
Other species	2 (0.5%)	0.1 (0.1%)	0.6 (0.1%)	348 (11.2%)
Total	412	60.1	1029.6	3107
Range	265-663	26.5-103.1	352.8-1232.9	276-12640
St. dev.	119	11.0	486.8	3444

1

	Snag [m ³ ha ⁻¹]	Log [m ³ ha ⁻¹]	Stump [m ³ ha ⁻¹]	Total [m ³ ha ⁻¹]
Volume	114.2	300.0	6.2	420.4
Range	0-403.6	2.2-604.3	0-25.2	68.9-736.5
St. dev.	125.1	152.0	7.4	193.4

2

3

4 Table 2. CWD volume (snags, logs and stumps) in the mixed silver fir, beech and Norway spruce

5 Biogradska Gora old-growth forest

6

7

8

9

10

11

12

	Class 1	Class 2	Class 3	Class 4	Class 5
Stumps	0,1	3,9	9,1	87,3	0,0
Logs	2,8	9,0	34,3	41,7	12,3
Snags	8,1	22,3	42,8	26,8	0,0
Total	4,2	12,5	36,2	38,3	8,8

13

14

15

16

17

18

19

20

21

22

23

24

25

26

27

28

29

30

31

32

33

34

35

36

37

38

39

40

41

42

43

44

45

46

47

48

49

50

51

52

53

54

55

56

57

58

59

60

17 Table 3. % of CWD (stumps, logs, snags and total) in different decay classes.

	Country	Altitude [m s.l.m.]	Species*	Density [n ha ⁻¹]	Basal area [m ² ha ⁻¹]	Volume [m ³ ha ⁻¹]	CWD	Reference
Biogradska gora	Montenegro	1210-1450	Fs, Aa, Pa, Ap	412	60.1	1029.6	420.4	This paper 2012, unpublished data
Perućica	Bosnia- Herzegovina	1420-1520	Aa, Pa, Fs	432	59.1	1031.1	406.0	Motta et al., 2011
Lom	Bosnia- Herzegovina	1250-1522	Fs, Aa, Pa	489	47.1	763.1	327.3	Paluch, 2007
Labowice Reserve	Poland	840-960	Fs, Aa	n.a.	36.3	543.0	383.0	Szwagrzyk et al., 2006
Suchy Zleb	Poland	1070-1120	Fs, Aa, Pa	442	36.7	446.8	159.0	Anic, Mikac, 2008
Čorkova uvala	Croatia	850-1000	Aa, Fs, Pa	440	42.7	671.2	n.a.	Holeksa, 2009
Hrončkovský grún	Slovakia	730-1050	Fs, Pa, Fe, Ap, Aa	243	41.8	724.4	306.0	Visnjic et al. 2009
Plješevica	Bosnia- Herzegovina	1120	Fs, Aa, Pa, Ap, Fe	n.a.	n.a.	651.5	89.0	

Table 4. Stand characteristics for some mixed silver fir, beech and Norway spruce in southern-central European old-growth forests.

1
2
3 1 Figure captions
4

5 2
6

7 3 Fig. 1. Location of the Biogradska Gora National park.
8
9

10 4

11 5 Fig. 2. Map of the Biogradska Gora valley showing the main vegetation types and the location of
12 the 30 plots.
13
14

15 6
16 7

17 8 Fig. 3. Diameter class distribution in the mixed silver fir, beech, Norway spruce old-growth forest
18 of Biogradska Gora. The distribution shows a rotated sigmoidal form ($P < 0.05$) which is typical of
19 old-growth stands.
20
21

22 9
23 10
24 11

25 12 Fig. 4. Relative abundance of the most abundant tree species according to the size class (from
26 regeneration to dominant trees) showing stratification of the species.
27
28

29 13
30 14

31 15 Fig. 5. Diameter-height relationships in beech and silver fir. The diameters are measured at the
32 breast height (dbh).
33
34

35 16
36 17
37 18

38 19 Fig. 6. Log and snag size distribution.
39
40

41 20
42 21
43

44 22
45 23
46 24

47 25
48 26
49 27

50 28
51 29
52 30

53 31
54 32
55 33

56 34
57 35
58 36

59 37
60 38

1
2
3
4
5
6
7
8
9
10
11
12
13
14
15
16
17
18
19
20
21
22
23
24
25
26
27
28
29
30
31
32
33
34
35
36
37
38
39
40
41
42
43
44
45
46
47
48
49
50
51
52
53
54
55
56
57
58
59
60

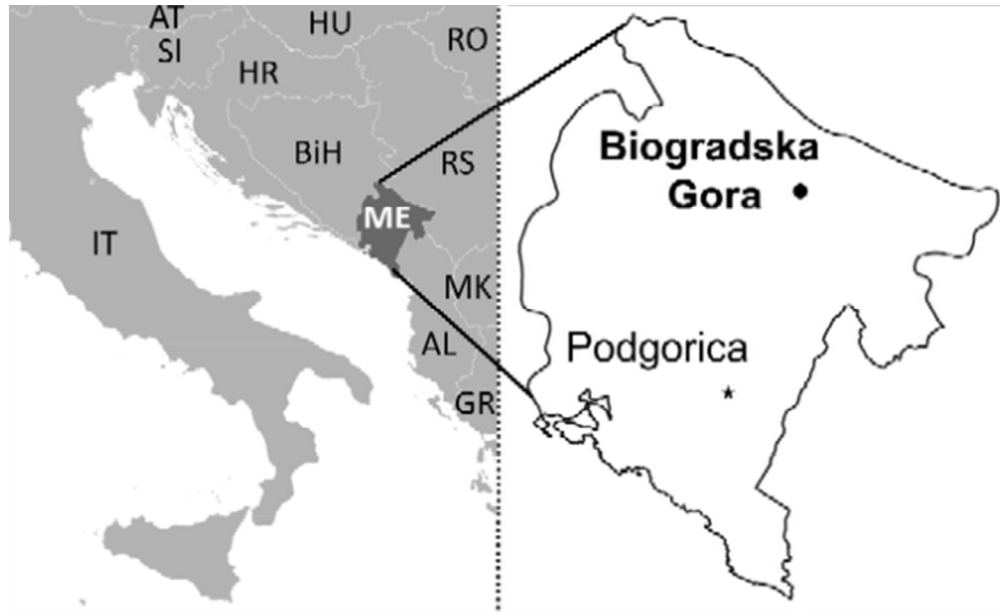


Fig. 1. Location of the Biogradska Gora National park.
209x127mm (72 x 72 DPI)

Review Only

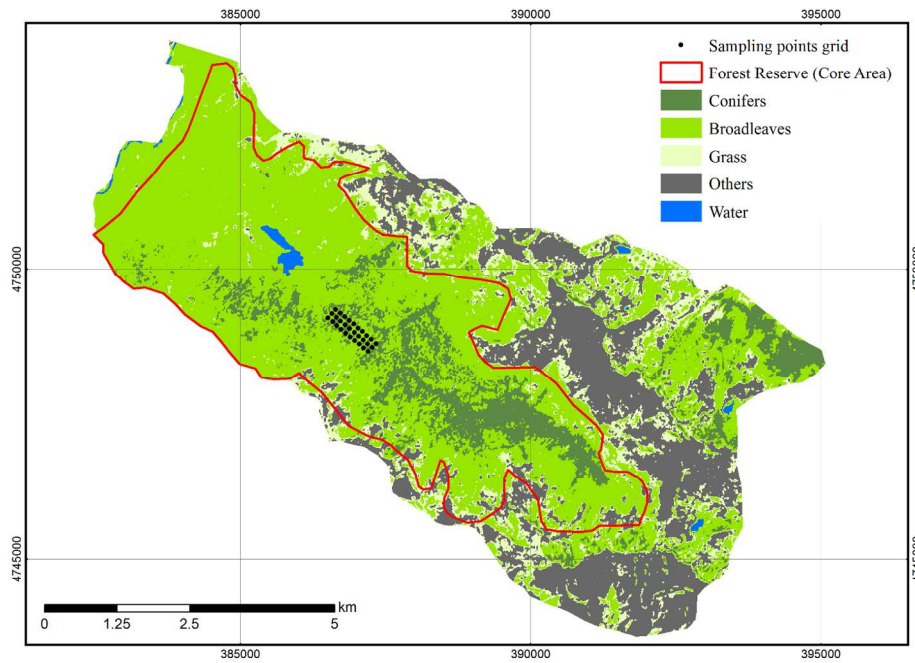


Fig. 2. Map of the Biogradska Gora valley showing the main vegetation types and the location of the 30 plots
148x105mm (300 x 300 DPI)

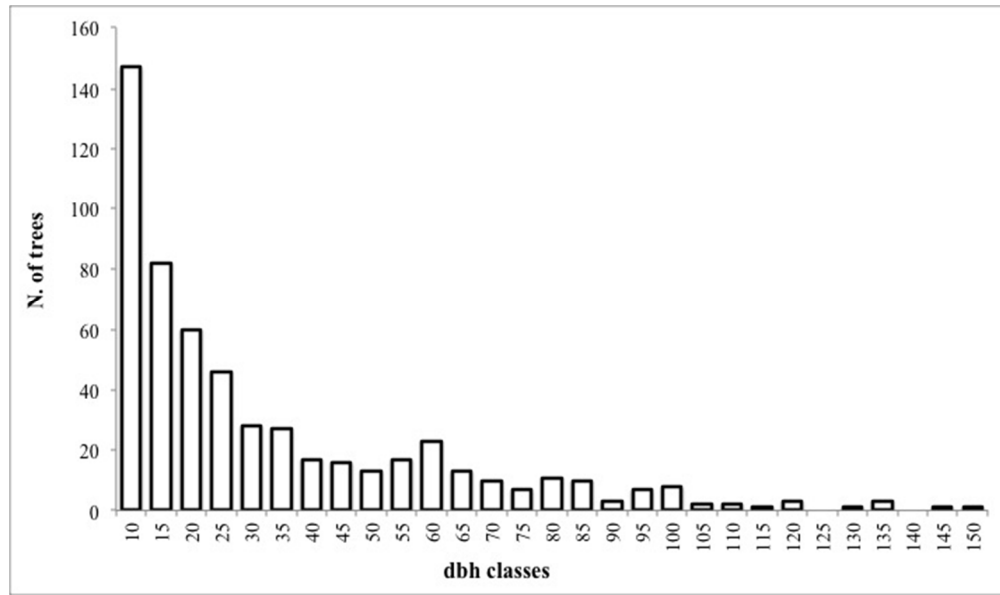


Fig. 3. Diameter class distribution in the mixed silver fir, beech, Norway spruce old-growth forest of Biogradska Gora. The distribution shows a rotated sigmoidal form ($P < 0.05$) which is typical of old-growth stands.

252x149mm (72 x 72 DPI)