

SUPPORTING MATERIAL

Inspection of high-concentration CO₂ events at the Plateau Rosa Alpine station

Silvia Ferrarese¹, Francesco Apadula², Fabio Bertiglia¹, Claudio Cassardo¹, Andrea Ferrero¹, Lucio Fialdini², Caterina Francone¹, Daniela Heltai², Andrea Lanza², Arnaldo Longhetto¹, Massimiliano Manfrin¹, Renzo Richiardone¹, Claudio Vannini²

¹Department of Physics, University of Torino, via P. Giuria 1, 10125, Torino, Italy

²Ricerca sul Sistema Energetico – RSE, via R. Rubattino 54, 20134, Milano, Italy

Content

Figure S1. Monthly averaged data (diamonds and thin line), twelve-month running average (open squares) and linear trend equal to 1.98 ± 0.04 ppm/year (thick line) of the Plateau Rosa CO₂ background concentrations.

Figure S2. Meteorological surface maps supplied by the Met Office of the UK's National Weather Service during the first event: on 18 February at 00:00 UTC (a), and on 19 February at 00:00 UTC (b). The same during the second event on 23 February (c), and on 24 February (d).

Figure S3. Modelled and observed profiles of wind direction (a), wind speed (b) and temperature (c) at 00:00 UTC on 19 February 2004 at Milan (Italy).

Figure S4. Modelled and observed profiles of wind direction (a), wind speed (b) and temperature (c) at 00:00 UTC on 23 February 2004 at Stuttgart (Germany).

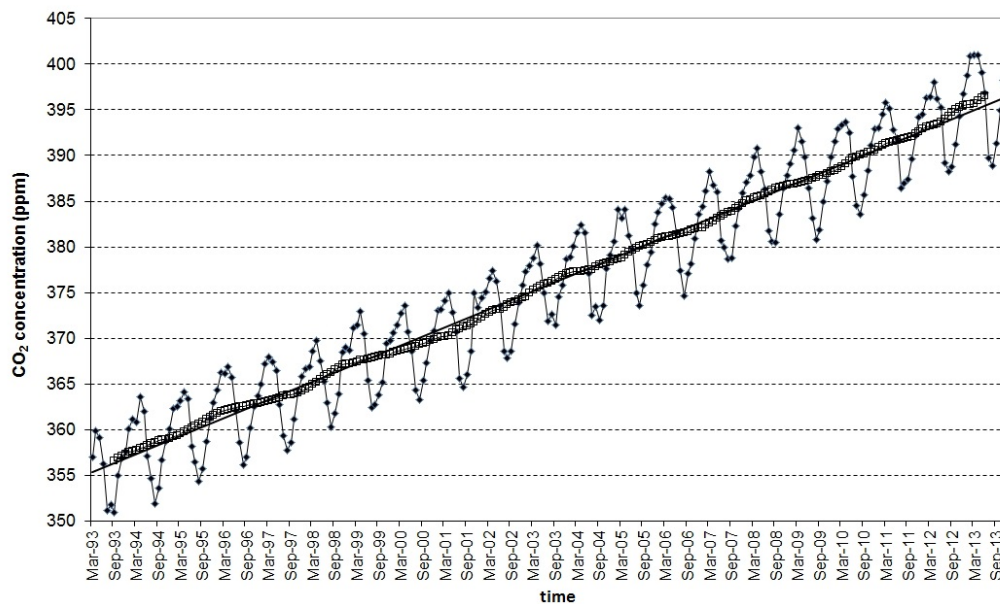


Figure S1. Monthly averaged data (diamonds and thin line), twelve-month running average (open squares) and linear trend equal to 1.98 ± 0.04 ppm/year (thick line) of the Plateau Rosa CO₂ background concentrations.

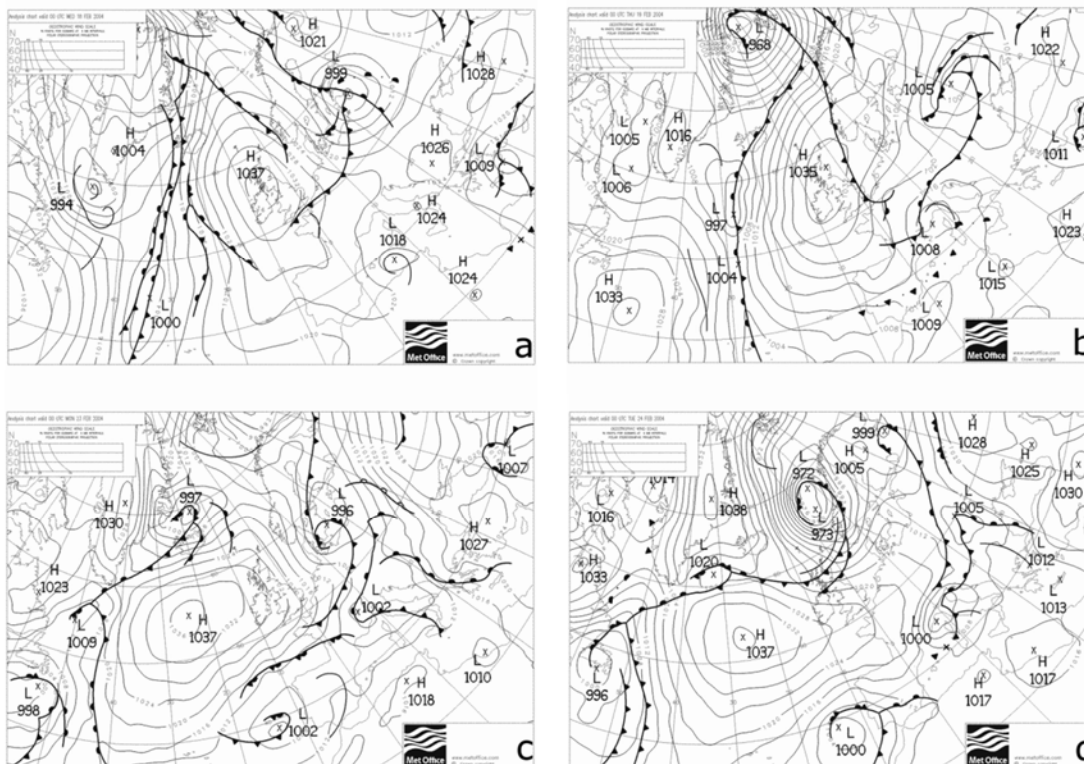


Figure S2. Meteorological surface maps supplied by the Met Office of the UK's National Weather Service during the first event: on 18 February at 00:00 UTC (a), and on 19 February at 00:00 UTC (b). The same during the second event on 23 February at 00:00 UTC (c), and on 24 February at 00:00 UTC (d).

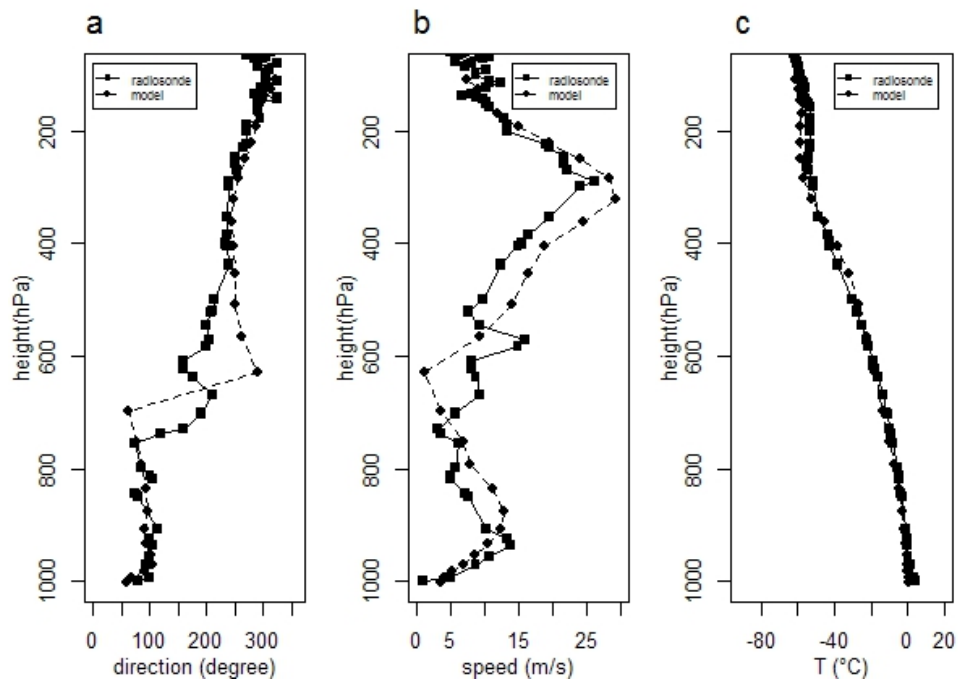


Figure S3. Modelled and observed profiles of wind direction (a), wind speed (b) and temperature (c) at 00:00 UTC on 19 February 2004 at Milan (Italy). Source of observed soundings: <http://weather.uwyo.edu/upperair/sounding.html>.

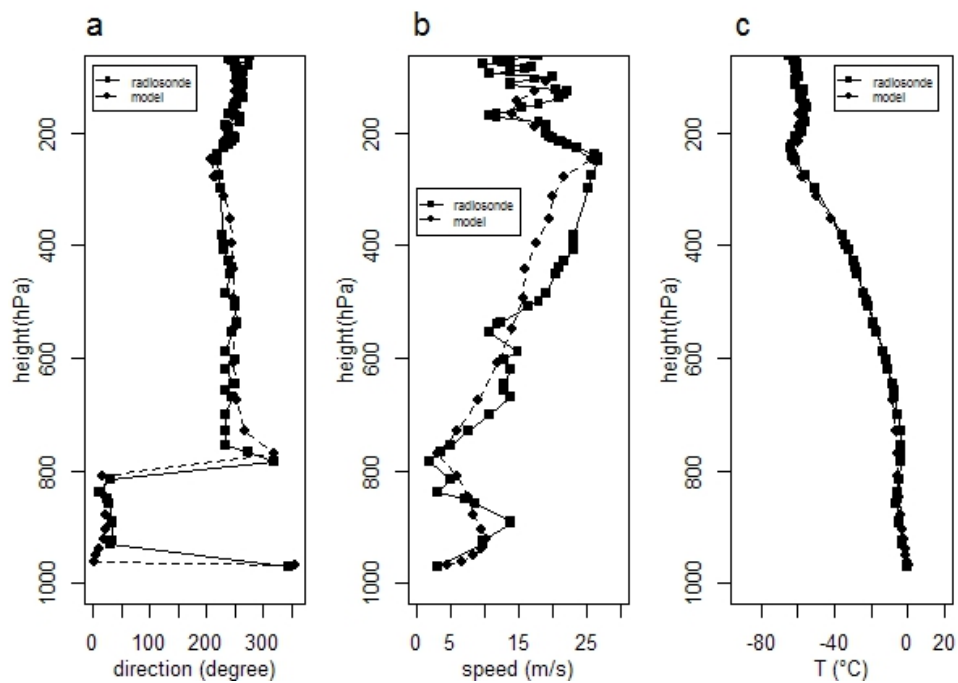


Figure S4. Modelled and observed profiles of wind direction (a), wind speed (b) and temperature (c) at 00:00 UTC on 23 February 2004 at Stuttgart (Germany). Source of observed soundings: <http://weather.uwyo.edu/upperair/sounding.html>.