

# GEOLOGICAL MAP OF THE COL DE BRAUS AREA (MARITIME ALPS, SE FRANCE)

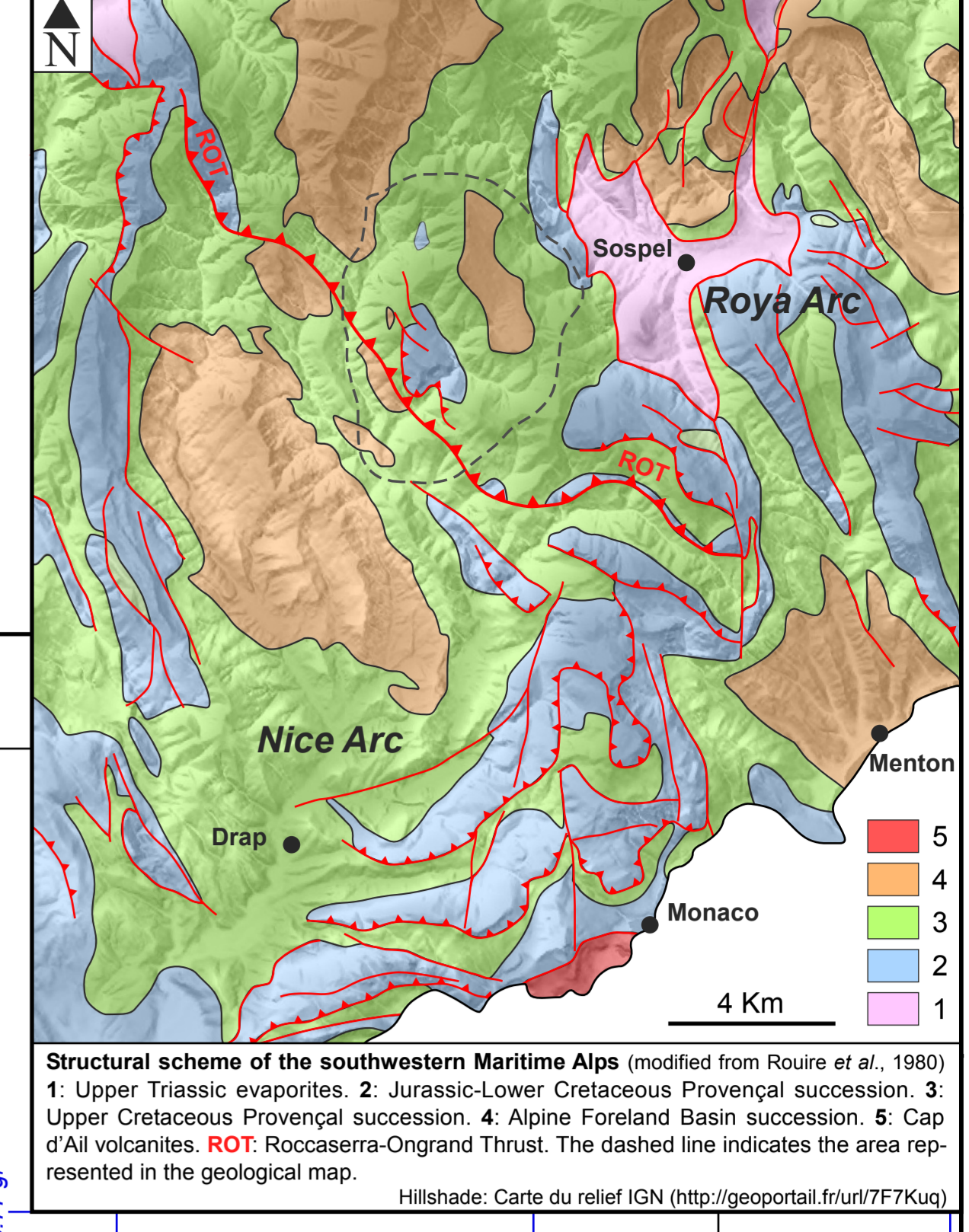
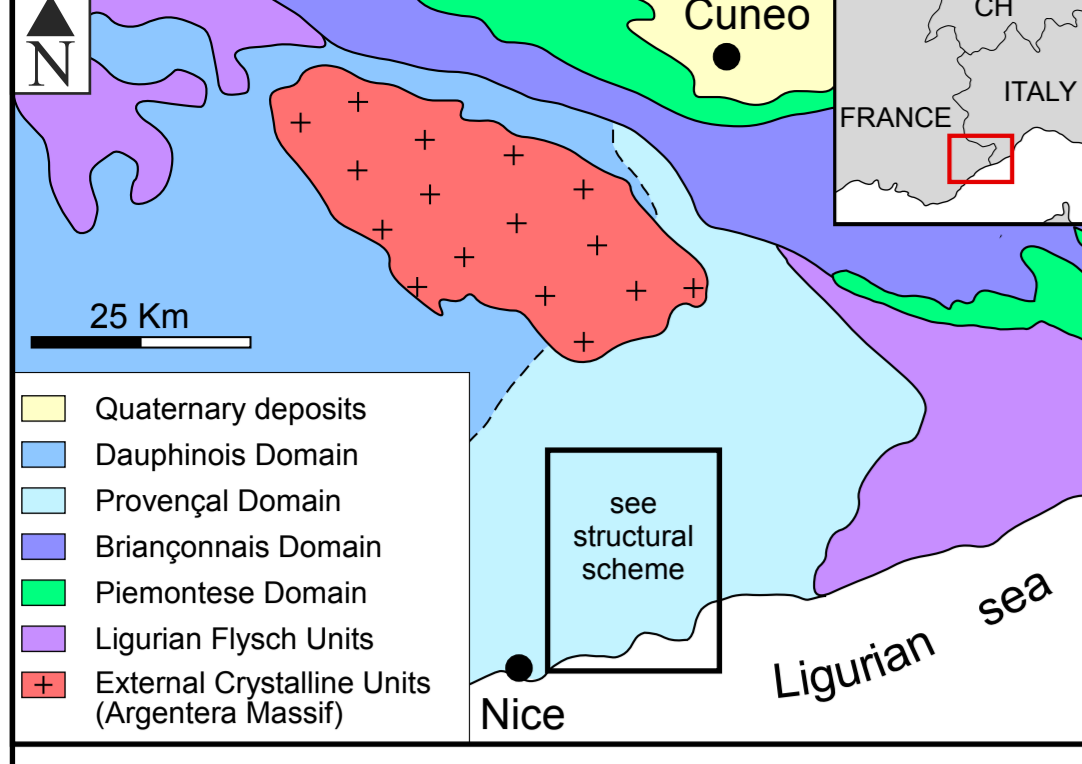
Scale 1:10,000

LUCA BARALE<sup>(1)</sup>, ANNA D'ATRI<sup>(1)</sup>, FABRIZIO PIANA<sup>(2)</sup>

(1) Università di Torino, Dipartimento di Scienze della Terra, Via Valperga Caluso 35, 10125 Torino, Italy. E-mail: luca.barale@hotmail.it  
(2) Istituto di Geoscienze e Georisorse, Consiglio Nazionale delle Ricerche, Via Valperga Caluso 35 - 10125 Torino, Italy



Consiglio Nazionale delle Ricerche



Structural scheme of the southwestern Maritime Alps (modified from Rouire et al., 1980)  
1. Upper Triassic evaporites. 2. Jurassic-Lower Cretaceous Provençal succession. 3. Upper Cretaceous Provençal succession. 4. Alpine Foreland Basin succession. 5. Cap d'Ail volcanics. ROT: Rocca Serra-Ongrand Thrust. The dashed line indicates the area represented in the geological map.  
Hillshade: Carte du relief IGN (<http://geoportal.fr/ur/7F7Kug>)

- ### LITHOSTRATIGRAPHIC UNITS
- QUATERNARY DEPOSITS**
- Anthropogenic deposits**
    - ant: alluvial deposits
    - all: alluvial deposits
  - Slope and talus debris**
    - deb: debris
    - deb: debris
  - Cemented talus breccias**
    - bre: breccias
  - Landslide accumulations**
    - lsa: landslides
- ALPINE FORELAND BASIN SUCCESSION**
- Globigerina Marl**
    - gma: marl
  - Nummulite Limestone**
    - num: limestone
  - Microcodium Formation**
    - mcf: formation
- JURASSIC-CRETACEOUS PROVENÇAL SUCCESSION**
- Caire de Braus Marl**
    - cbm: marl
  - Mont Auri Limestone**
    - mal: limestone
  - Saint Laurent Marl**
    - slm: marl
  - Grès Verts**
    - grv: marl
  - Clarissa Formation**
    - clm: formation
  - Cime de la Graye Limestone**
    - clm: limestone
  - Tithonian limestones**
    - tit: limestone
  - Kimmeridgian limestones**
    - kim: limestone
  - Oxfordian limestones**
    - oxf: limestone
  - Callovian dolostones**
    - cal: dolostone
  - Middle Jurassic limestones**
    - mjl: limestone
- SYMBOLS**
- strike and dip line of bedding (dip values in degrees)
  - strike and dip line of overturned bedding (dip values in degrees)
  - axis of mesoscale fold (plunge value in degrees)
  - faults (a), and their concealed or inferred prosecution (b)
  - thrusts (a), and their concealed or inferred prosecution (b) (ROT, Rocca Serra-Ongrand Thrust; TET, Touët de l'Escarène Thrust)
  - anticline axial surface lines (ESA, l'Escarène anticline; MAA, Mont l'Ablé anticline)
  - syncline axial surface lines (CBS, Col de Braus syncline; CPS, Cime de la Plastra syncline; MDS, Mortisson syncline; ESS, l'Escarène syncline)
  - traces of the geological sections
  - fossiliferous sites
  - Lucérarn arsenic mine: portal of the main gallery

