

This article was downloaded by: [Luca Barale]

On: 06 September 2015, At: 13:23

Publisher: Taylor & Francis

Informa Ltd Registered in England and Wales Registered Number: 1072954 Registered office: 5 Howick Place, London, SW1P 1WG



Journal of Maps

Publication details, including instructions for authors and subscription information:
<http://www.tandfonline.com/loi/tjom20>

The Meso-Cenozoic stratigraphic succession of the Col de Braus area (Maritime Alps, SE France)

Luca Barale^a, Anna d'Atri^a & Fabrizio Piana^b

^a Dipartimento di Scienze della Terra, Università degli Studi di Torino, Via Valperga Caluso, 35, 10125 Torino, Italy

^b Istituto di Geoscienze e Georisorse, Consiglio Nazionale delle Ricerche, Via Valperga Caluso, 35, 10125 Torino, Italy

Published online: 03 Sep 2015.



CrossMark

[Click for updates](#)

To cite this article: Luca Barale, Anna d'Atri & Fabrizio Piana (2015): The Meso-Cenozoic stratigraphic succession of the Col de Braus area (Maritime Alps, SE France), *Journal of Maps*, DOI: [10.1080/17445647.2015.1077167](https://doi.org/10.1080/17445647.2015.1077167)

To link to this article: <http://dx.doi.org/10.1080/17445647.2015.1077167>

PLEASE SCROLL DOWN FOR ARTICLE

Taylor & Francis makes every effort to ensure the accuracy of all the information (the "Content") contained in the publications on our platform. However, Taylor & Francis, our agents, and our licensors make no representations or warranties whatsoever as to the accuracy, completeness, or suitability for any purpose of the Content. Any opinions and views expressed in this publication are the opinions and views of the authors, and are not the views of or endorsed by Taylor & Francis. The accuracy of the Content should not be relied upon and should be independently verified with primary sources of information. Taylor and Francis shall not be liable for any losses, actions, claims, proceedings, demands, costs, expenses, damages, and other liabilities whatsoever or howsoever caused arising directly or indirectly in connection with, in relation to or arising out of the use of the Content.

This article may be used for research, teaching, and private study purposes. Any substantial or systematic reproduction, redistribution, reselling, loan, sub-licensing, systematic supply, or distribution in any form to anyone is expressly forbidden. Terms & Conditions of access and use can be found at <http://www.tandfonline.com/page/terms-and-conditions>



SCIENCE

The Meso–Cenozoic stratigraphic succession of the Col de Braus area (Maritime Alps, SE France)

Luca Barale^a, Anna d’Atri^a and Fabrizio Piana^b

^aDipartimento di Scienze della Terra, Università degli Studi di Torino, Via Valperga Caluso, 35, 10125 Torino, Italy; ^bIstituto di Geoscienze e Georisorse, Consiglio Nazionale delle Ricerche, Via Valperga Caluso, 35, 10125 Torino, Italy

ABSTRACT

The 1:10,000 geological map here presented extends over about 32 km² around the Col de Braus pass in the Maritime Alps (SE France). This area has attracted the attention of geologists since the late eighteenth century due to superb exposures of the Jurassic–Cretaceous Provençal succession, and has become a classic geological locality continuously studied until the present day. In this area, Early Cretaceous synsedimentary tectonics is evidenced by important lateral thickness and facies variations. This sector is presently placed at the western termination of a large structural domain extending from the westernmost Ligurian Alps into the French–Italian Maritime Alps, thus representing a key-area for understanding the structural setting of this part of the Western Alps.

ARTICLE HISTORY

Received 21 January 2015
Revised 5 June 2015
Accepted 24 July 2015

KEYWORDS

Provençal Domain; Mesozoic;
Nice Arc; Col de Braus;
Maritime Alps; SE France

1. Introduction and geological setting

The Col de Braus area, in the Nice inland (Maritime Alps, SE France), represents a key-sector for the geology of SE France, as confirmed by the long history of geological research that has been carried out over more than two centuries (see Chapter 2). It corresponds to the southeastern sector of the Alpine External Domain (Dauphinois Domain) that was part, during the Mesozoic, of the European passive margin of the Alpine Tethys. In the Paleogene, the study area became part of the Alpine Foreland Basin that developed in front of the Alpine chain after the first stages of continental collision between Europe and Adria (Crampton & Allen, 1995).

The stratigraphic succession unconformably rests on a crystalline basement, currently cropping out in the Argentera Massif, and starts with a thick Upper Carboniferous–Permian continental succession, followed by Lower Triassic siliciclastic coastal deposits, Middle Triassic peritidal carbonates, and Upper Triassic evaporites, related to the early stages of the Alpine Tethys rifting. In the Early Jurassic, the European margin differentiated into a platform domain (Provençal) and a basinal domain (Dauphinois), as a result of extensional tectonics during the Alpine Tethys rifting (Dardeau, 1988). In the Provençal Domain, after a period of emersion which included most of the Early Jurassic, Middle–Late Jurassic sedimentation occurred in a carbonate platform environment (Lanteaume, 1968). Valanginian tectonics resulted in the drowning of the carbonate platform (Debelmas & Kerckhove, 1980), followed by the deposition, in the study area,

of Hauterivian–lower Cenomanian *p.p.* condensed, open-marine shelfal deposits, showing important lateral variations related to synsedimentary tectonics (Decarlis & Lualdi, 2008; Pasquini, Lualdi, & Vercesi, 2004). After shelf drowning in the early Cenomanian, a thick hemipelagic succession was deposited (early Cenomanian *p.p.*–Campanian). The top of the Mesozoic succession is truncated by a regional unconformity corresponding to a latest Cretaceous–middle Eocene hiatus. Above, the Alpine Foreland Basin succession starts with laterally discontinuous continental to coastal deposits (*Microcodium* Formation, Faure-Muret & Fallot, 1954), followed by the middle Eocene ramp Nummulitic Limestone, the hemipelagic upper Eocene *Globigerina* Marl and the upper Eocene–lower Oligocene Grès d’Annot turbidite succession (Ford, Lickhorish, & Kuznir, 1999; Sinclair, 1997).

The map area is located at the transition between two structural domains, the Nice Arc and the Roya Arc (Bulard et al., 1975; Gèze, 1963; Perez, 1975) showing different trends of major folds and thrusts (see structural scheme on the Main Map). The Nice Arc shows variably orientated folds and thrusts, trending NNW–SSE in the western part and E–W to NE–SW in the southern and southeastern part (Bulard et al., 1975; Gèze, 1963; Perez, 1975). The Roya Arc is the westernmost part of a larger structural domain (Roya–Argentina Unit; d’Atri, Piana, Barale, Bertok, & Martire, submitted; Piana et al., 2014), extending from the westernmost Ligurian Alps (Nervia–upper Argentina valleys) to the eastern part of the Maritime Alps and bounded towards the north by the Argentera

Massif. This domain, showing NNW–SSE to N–S fold trends, has been the target of detailed geological survey over the last 15 years by a research group of the Italian National Research Council (Istituto di Geoscienze e Georisorse) and Torino University (Earth Science Department). The related results have been only partly published (d’Atri et al., submitted; Piana et al., 2014). The Col de Braus area is located at the western termination of this domain and will therefore be important in the definition of its western boundary, which is possibly identifiable in the Rocca Serra–Ongrand Thrust (ROT; Guardia, Ivaldi, Dubar, Guglielmi, & Perez, 1996).

The map is focused on a small area surrounding the Col de Braus pass, which was previously mapped in the Menton–Nice sheet of the Geological Map of France at 1:50,000 (Gèze, Lanteaume, Peyre, & Vernet, 1968). The large scale of the presented map (1:10,000) allowed detailed mapping of geological features, in particular:

- the lateral variations of Lower Cretaceous lithostratigraphic units, particularly significant in this area;
- the distribution of laterally discontinuous continental deposits at the base of the Alpine Foreland Basin succession (Microcodium Formation), which were not represented in previous maps; and

- the sites with the newly recognized cold-water colonial corals at the top of the Nummulitic Limestone.

2. Geohistorical and scientific significance of the Col de Braus area

On the western side of the Col de Braus, the Jurassic–Cretaceous Provençal succession and the lower part of the Paleogene Alpine Foreland Basin succession are continuously exposed in a natural stratigraphic section over a thickness of about 1200 m (Figure 1(a), (b)). This section was first mentioned from the late eighteenth century (Beaumont, 1795; Buckland, 1829; Omalius d’Halloy, 1810; Perez, 1847; Risso, 1826; Sismonda, 1848; Sulzer, 1780), and has soon become a ‘classic’ locality for the geology of the Maritime Alps (e.g. Boussac, 1912; Caméré, 1877; Demay, 1984; Fallo, 1885; Gignoux & Moret, 1937; Hébert, 1877; Kilian & Reboul, 1908; Lanteaume, 1968; Potier, 1877). Over the past decade, detailed stratigraphic and sedimentological analyses have focused on glaucony- and phosphate-rich Lower Cretaceous condensed deposits (Barale, d’Atri, and Martire, 2013; Decarlis & Lualdi, 2008; Pasquini et al., 2004, and discussion by Parize

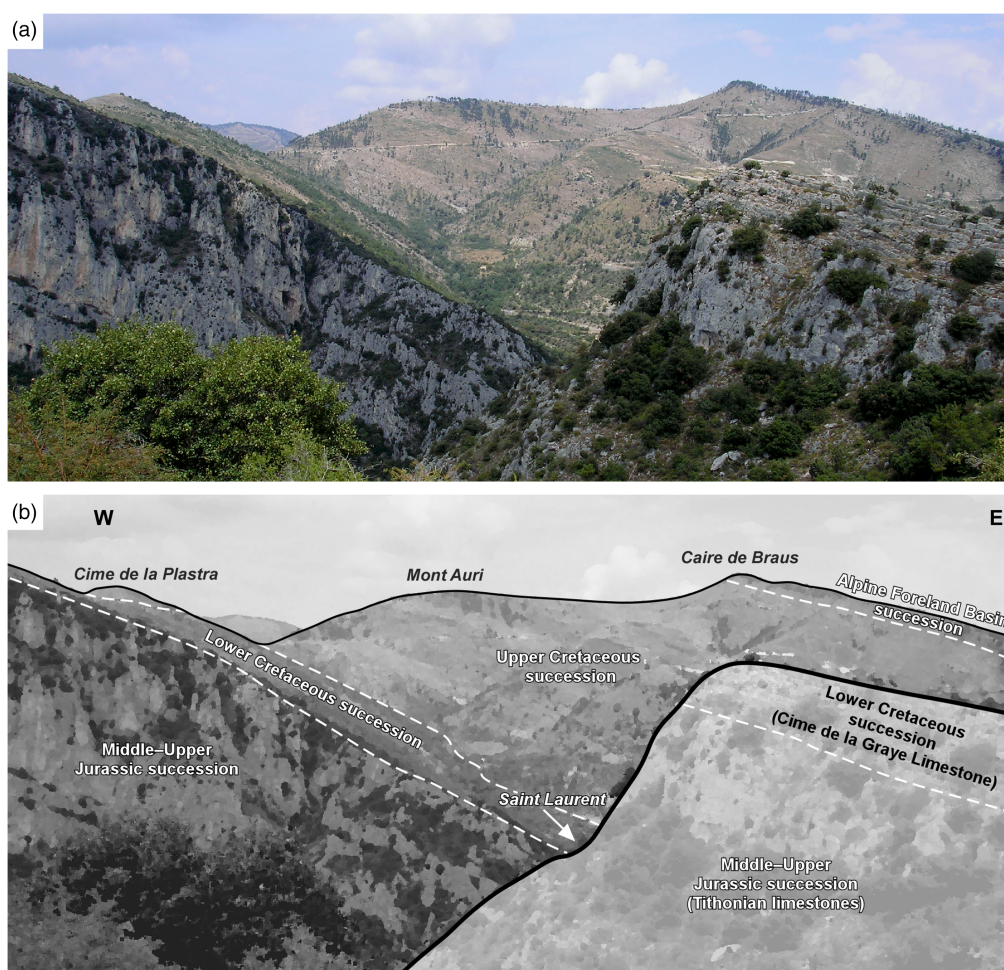


Figure 1. Panoramic view (a) and explanatory sketch (b) of the Col de Braus stratigraphic succession exposed on the northern side of the Ruisseau de Redebras valley (background); in the foreground, the transition from the Tithonian limestones to the Cime de la Graye Limestone cropping out near Albaretta, on the southern side of the same valley. Image taken from Albaretta locality (43° 50′56.3″ N; 7°22′37.5″ E), looking northwards.

et al., 2005; Pasquini and Vercesi, 1999). Different paleontological studies have been dedicated to the fossil-rich Barremian deposits cropping out near Saint Laurent (Bert and Delanoy, 2000; Bert, Delanoy, & Bersac, 2006; Delanoy, 1990, 1992; Delanoy, Magnin, Selebran, & Selebran, 1991). The Upper Cretaceous succession of the Col de Braus section was also the subject of detailed biostratigraphic analyses of planktonic-foraminifera and calcareous nannofossils (Conard, 1978; Conard & Manivit, 1979), palynofacies (Götz, Feist-Burkhardt, & Ruckwied, 2008), and ammonites (Thomel, 1992).

3. Methods

The geological map is drawn at 1:10,000 scale and covers an area of approximately 32 km². Data were collected through fieldwork, stored in a geographical information system database (Coordinate system: NTF (Paris)/Lambert zone II extended) and represented on a vector topographic map, which has been completely redrawn on the SCAN 25° EDR map (1:25,000 scale) of the French National Geographic Institute (IGN).

Names of lithostratigraphic units already existing in the literature have been utilized (Alpine Foreland Basin units, and the Grès Verts of the Cretaceous succession). The other Cretaceous units, for which no names existed in the literature, have been newly named after study area localities. Jurassic units have been not renamed, due to their limited extent in the study area, and are referred to using a lithological term preceded by their age (e.g. Callovian dolostones).

4. Structural setting

The main structural feature of the mapped area is the SW-vergent Rocca Serra–Ongrand Thrust (ROT; Guardia et al., 1996) also known as Rocca Serra–Touët de l'Escarène Thrust (Bulard et al., 1975). This is a NW–SE-striking, low-angle reverse fault, characterized by a metre-thick shear zone with intense cataclastic deformation, which in the study area runs almost entirely within the Upper Cretaceous succession and has scarce morphological evidence. The ROT crosses the whole map area, dividing it in two structural domains. Its footwall domain is deformed by hectometre- to kilometre-scale, NNW–SSE trending, WSW-vergent open to tight flexural folds, involving the Upper Cretaceous and the Alpine Foreland Basin successions (l'Escarène and Mortisson synclines, l'Escarène anticline), with highly inclined axial surfaces and axes gently plunging towards SSE. The ROT hanging wall domain is instead characterized by a kilometre-scale, NNW–SSE trending open syncline (Col de Braus syncline), affecting the Jurassic–

Cretaceous and the Alpine Foreland Basin successions on both sides of the Col de Braus.

On the western limb of this syncline, just above the ROT, the Jurassic–Lower Cretaceous succession is involved in a complex structure, known in the literature as 'Écaille intercutanée de la Graye de Touët' [Graye de Touët intracutaneous wedge] (Gèze, 1963). This is a non-cylindrical structure, whose overall N170 strike is oblique to the strike of the ROT. In its middle part (Ruisseau de Redebraus valley), it is represented by a kilometre-scale fault-propagation fold affecting the Upper Cretaceous succession and related to the propagation of a blind thrust (Touët de l'Escarène Thrust, TET; see section C–C' on the Main Map) that causes the local superposition of the Jurassic succession of the Cime de la Graye onto the Upper Cretaceous succession cropping out near Touët de l'Escarène. The latter is characterized by development of drag fold sequences, kinematically consistent with the TET sense of shearing (Figure 2(a)). Towards the north (Roccaniera), the TET evolves as a faulted anticline with a highly inclined axial surface and hectometre-scale slices of Jurassic–Lower Cretaceous succession in its core (see section A–A' on the Main Map), whereas towards the south it merges in the ROT.

5. Stratigraphy

The description of lithostratigraphic units focuses on easily observable field characteristics, that is, lithology and macrofossil content. References given beside unit names refer to the age attribution, whereas unit descriptions, if not otherwise specified, are based on original data fully reported in Barale (2010).

5.1. Jurassic succession

This consists of a 300 m thick carbonate platform succession, mainly cropping out in the Ruisseau de Redebraus valley, downstream of Saint Laurent.

5.1.1. Middle Jurassic limestones (Bajocian–Bathonian; Gèze et al., 1968)

Medium- to thick-bedded limestones (packstones/grainstones and rudstones with oncoids, ooids, bioclasts, and intraclasts), locally showing a selective dolomitization of the matrix (Figure 2(b)), alternating with medium to coarsely crystalline dolostone beds (shallow-water carbonate platform deposits). In the study area, only the uppermost part of this unit crops out (about 20–30 m thick, referred to the Bathonian; Decarliis, 2005), due to its basal truncation by the TET.

5.1.2. Callovian dolostones (Callovian; Dardeau, 1983)

Light brown to beige, medium to coarsely crystalline dolostones (locally sucrosic), in decimetre-thick beds;

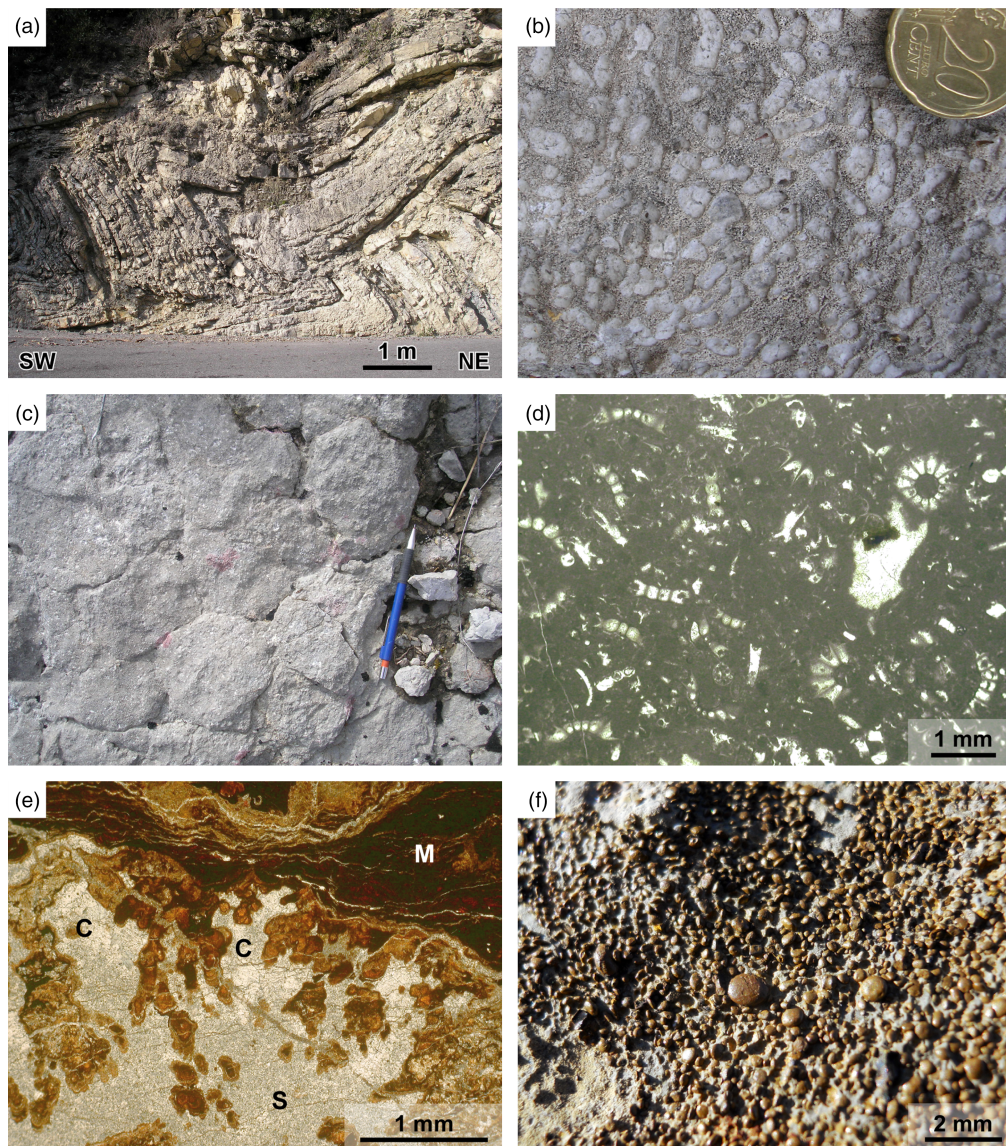


Figure 2. Field and thin section features of the stratigraphic succession in the Col de Braus area. (a) Chevron drag folds affecting the marl–limestone alternations (Caire de Braus Marl) in the footwall of the Touët de l'Escarène Thrust, cropping out along the D2204 road near Touët de l'Escarène. (b) Bed of intraclast rudstone in the Middle Jurassic limestones, showing a selective dolomitization of the matrix; Rochers de Saint Sauveur. (c) Bedding surface with mud cracks in the upper part of the Cime de la Graye Limestone; Saint Laurent. (d) Bioclastic packstone rich in *Clypeina jurassica* fragments from the upper part of the Cime de la Graye Limestone; Roccaniera. Thin section photomicrograph, plane-polarized light. (e) Ferruginous microstromatolites hanging from the roof of a small cavity within the mineralized crust (M, mainly made up of Fe-oxyhydroxides) coating the hard ground HG1; Saint Laurent. The cavity is filled-up by a micritic sediment (S), giving rise to a geopetal structure plugged by later calcite cement (C). Thin section photomicrograph, plane-polarized light. (f) Weathered bedding surface of the basal deposits of the Clarissia Formation, showing the ellipsoidal mixed Fe-oxide–phosphate ooids; Cime de la Graye.

no fossils or internal structures are preserved (carbonate platform deposits). This unit, about 80 m thick, is cut at the top by an unconformity which corresponds to a hiatus spanning the latest Callovian–early Oxfordian (Dardeau & Thierry, 1976).

5.1.3. Oxfordian limestones (middle–late Oxfordian; Dardeau & Thierry, 1976)

Brown to dark grey, thin- to medium-bedded limestones (bioclastic mudstones to wackestones and minor bioclastic packstones), with belemnites, crinoids, bivalves, gastropods, ammonites, solitary corals,

and benthonic foraminifera (outer open-platform deposits). Thickness: 40–50 m.

5.1.4. Kimmeridgian limestones (Kimmeridgian–Tithonian *p.p.*; Dardeau & Thierry, 1976)

Light brown, massive limestones (bioclastic wackestones to packstones and grainstones, bioclastic rudstones), showing a grey colour on weathered surfaces. Abundant reddish-brown chert nodules, aligned along decimetre-spaced layers, give the rock a bedded appearance. Open-platform deposits. Thickness: 70–80 m.

5.1.5. Tithonian limestones (*Tithonian p.p.*–early *Berriasian p.p.*; Dardeau & Thierry, 1976)

Light-grey massive limestones, consisting of bioclastic–oncoidal–oidal packstones, grainstones and rudstones, locally passing to coral boundstones. The abundant fossil content consists of nerineid gastropods, thick-shelled bivalves, corals, echinoderm fragments, calcareous red and green algae, benthic foraminifera. The uppermost metres are mainly composed of crinoid-rich grainstones. At the top of the unit, a decimetre-thick conglomerate bed with rounded, centimetre-sized reddish intraclasts in a Fe-oxide-rich packstone matrix with millimetre-sized authigenic quartz crystals, is probably referable to an emersion episode. Shallow-water carbonate platform deposits. Thickness: 80 m.

5.2. Lower Cretaceous succession

This consists of a peritidal succession (Cime de la Graye Limestone), followed by open-marine shelfal deposits characterized by low sedimentation rates (Clarissia Formation, Grès Verts), and shows important lateral variations (Figure 3) related to

synsedimentary tectonics (e.g. Decarlis & Lualdi, 2008; Montecat, Hibschi, Perrier, Pascaud, & de Bretzel, 1997; Pasquini et al., 2004). On the eastern side of the Col de Braus ridge (Cime de Ventabren, Vallon du Parais), the thickness of the Cime de la Graye Limestone and the Clarissia Formation is reduced to a few metres each. Therefore, they have been represented as a unique cartographic unit on the map.

5.2.1. Cime de la Graye Limestone (early *Berriasian p.p.*–late *Berriasian*; Dardeau & Pascal, 1982)

Medium- to thick-bedded, light-grey to beige limestones, locally alternating with very thin beds of greenish marls and nodular mudstones with a greenish marly matrix. Limestone beds commonly have an erosional base and show the following internal lithofacies organization (shallowing-upward peritidal cycles; e.g. Wilson, 1975): bioclastic packstones/rudstones (2–10 cm); bioturbated, peloidal–bioclastic mudstones/wackestones (20–100 cm); laminated mudstones with fenestral porosity, millimetre-sized black pebbles, and mud cracks (Figure 2(c)), locally passing to flat-pebble breccias (10–40 cm). Decimetre-thick beds of bioclastic

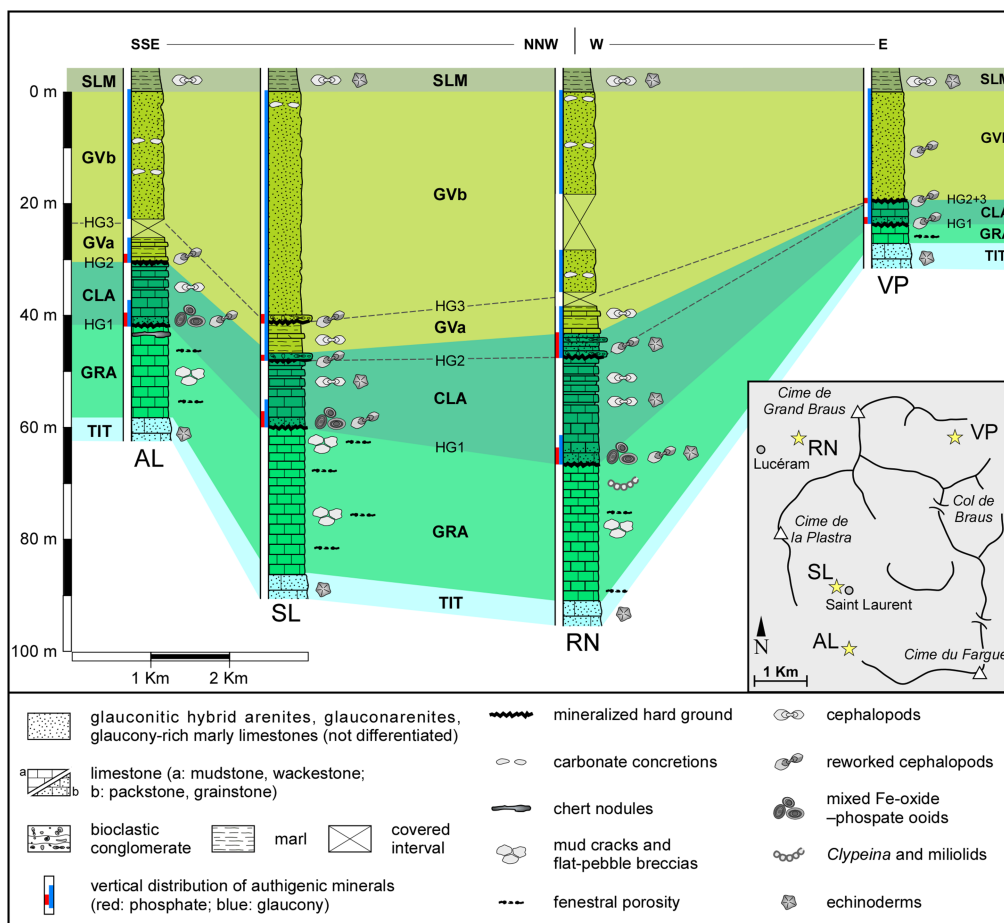


Figure 3. Correlative scheme showing the lateral variations of the Lower Cretaceous succession in the study area (stratigraphic sections: AL, Albaretta; SL, Saint Laurent; RN, Roccaniera; VP, Vallon du Parais). Stratigraphic sections have been aligned in correspondence with the base of the Saint Laurent Marl. Abbreviations of lithostratigraphic units: TIT, Tithonian limestones; GRA, Cime de la Graye Limestone; CLA, Clarissia Formation; GV, Grès Verts (GVa, lower interval; GVb, upper interval); SLM, Saint Laurent Marl.

wackestones/packstones with *Clypeina jurassica* and miliolids are locally present (lagoonal sediments; Figure 2(d)). Thickness: 4–25 m.

5.2.2. Clarissia Formation (early Hauterivian p.p.–early Aptian p.p.; Barale, 2010; Delanoy, 1992)

This unit rests on a mineralized hard ground (HG1) developed on top of the underlying Cime de la Graye Limestone. The hard ground, locally encrusted by serpulids and ferruginous microstromatolites (Figure 2(e)), is covered by a centimetre-thick lag deposit made up of mineralized intraclasts and bioclasts (*Hypophylloceras ponticuli*, *Cymatoceras* sp., belemnites). Above, a thin

stratigraphic interval (0–1 m), rich in mixed Fe-oxide–phosphate ooids is locally present (Barale et al., 2013). This interval is made up of bioturbated ooidal wackestones/packstones (Figure 2(f)), with reworked cephalopods (*Acanthodiscus* sp., *Lytoceras* sp., Phylloceratidae, *Cymatoceras* sp., *Duvalia* sp.), echinoderms, brachiopods, bivalves, and fish teeth. It is followed by medium-bedded glauconitic limestones (Figure 4(a)) and marly limestones, with *Duvalia* sp., *Cruasicerus cruasense* (Figure 5(a)), *Crioceratites* sp., *Cymatoceras* sp., passing upward to thin-bedded bioclastic mudstones and wackestones, with centimetre-thick marly interbeds, containing *Crioceratites* sp. (Figure 4(b)), *Toxaster* sp.,

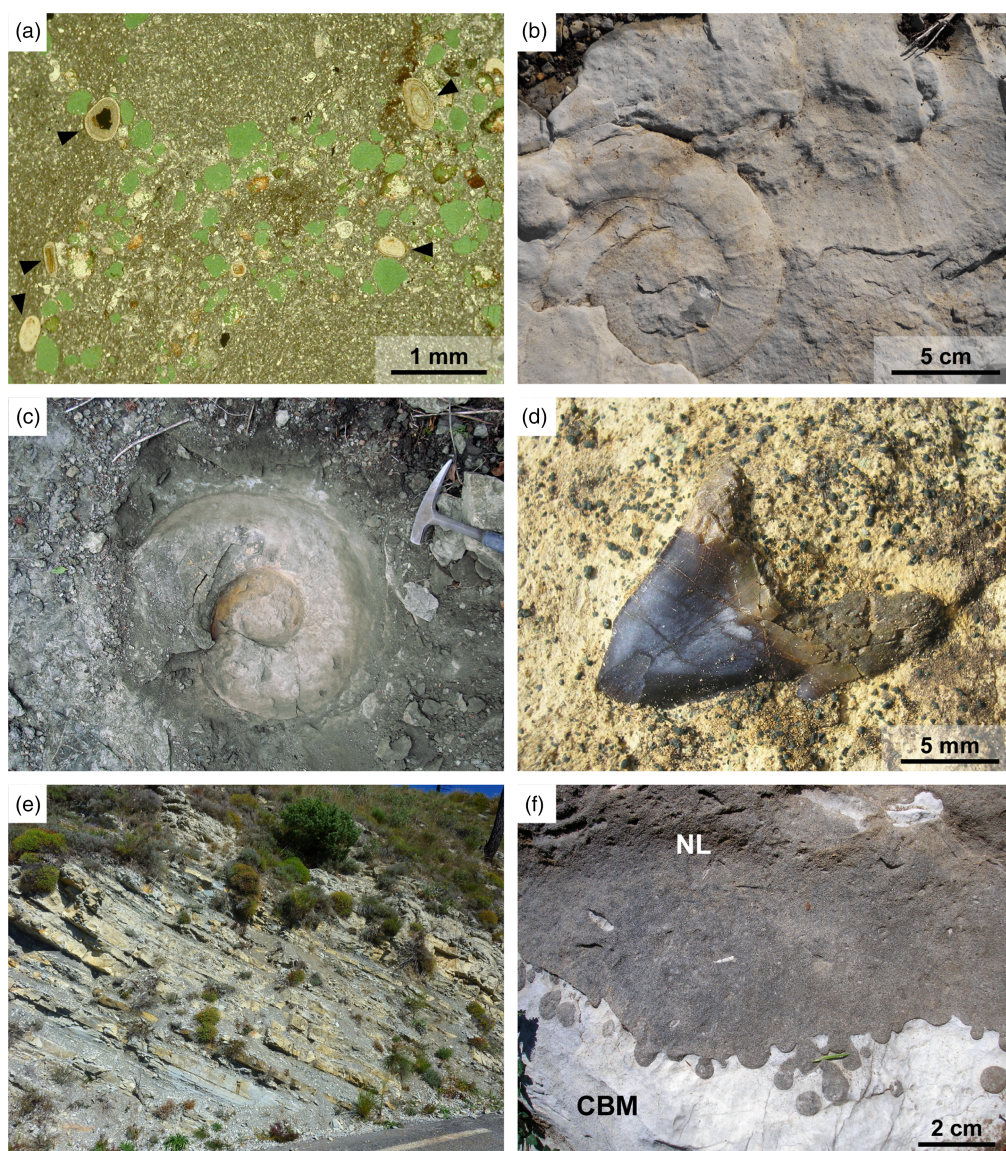


Figure 4. Field and thin section features of the stratigraphic succession in the Col de Braus area. (a) Bioturbated, glauconitic bioclastic packstone in the lower part of the Clarissia Formation (Roccaniera), showing brilliant-green glaucony grains and some phosphatic ooids (arrowheads); the glaucony-poor portions correspond to burrows. Thin section photomicrograph, plane-polarized light. (b) Bedding surface of a bioclastic wackestone bed in the Clarissia Formation, showing internal (to the left) and external (to the right) moulds of *Crioceratites* sp.; Cime de la Graye. (c) Large macroconch of *Puzosia* sp. in the bioturbated, glaucony-rich calcreous marl at the top of the Grès Verts; Saint Laurent. (d) Lamniform selachian tooth on a weathered surface of the glaucony-rich calcreous marly bed at the top of the Grès Verts (note the dark-green glaucony grains sticking out of the surface); Roccaniera. (e) Alternations of thin-bedded marly limestones and marls in the lower part of the Caire de Braus Marl, cropping out along the D2204 road north of Saint Laurent. (f) Polygenic discontinuity surface separating the Nummulitic Limestone (NL) from the underlying Caire de Braus Marl (CBM), showing abundant *Gastrochaenolites* bivalve borings; Rocher de Pianastan.

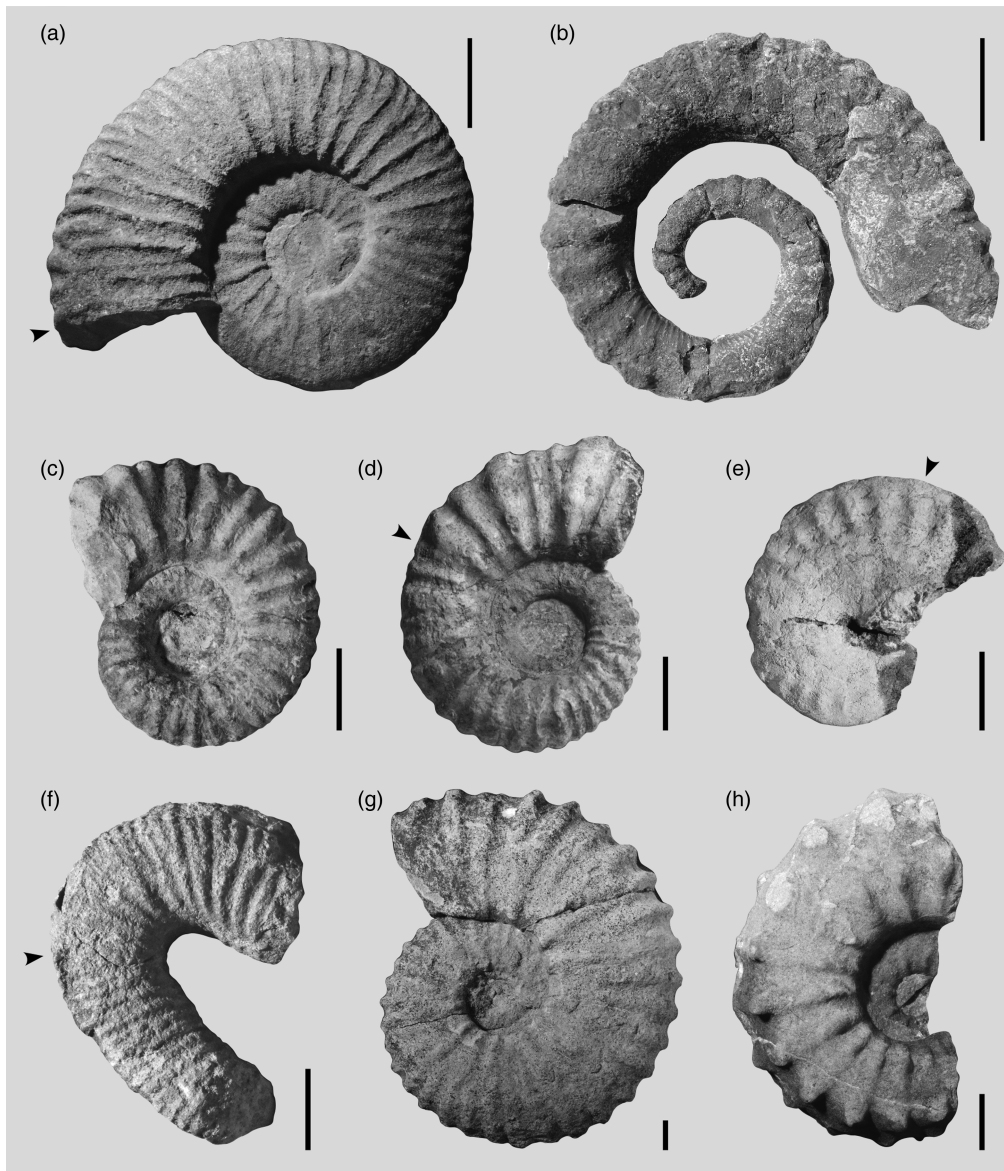


Figure 5. Ammonites from the Cretaceous succession of the Col de Braus area. (a) *Cruasicerus cruasense* (lower part of the Clarissia Formation, eastern side of Cime de la Graye). (b–f) Reworked ammonites from the bioclastic–lithoclastic conglomerates in the upper part of the Clarissia Formation, Clarissia (b, *Gassendicerus alpinum*; c, *Hemihoplites feraudianus*; d, *Pachyhemihoplites contei*; e, *Kotetishvilia sauvageaui*; f, *Argvethites* sp.). (g) *Mantelliceras picteti* (top bed of the Grès Verts, Saint Laurent). (h) *Cunningtonicerus cunningtoni* (Saint Laurent Marl, Villatalla). Scale bars: a and b, 5 cm; c–h, 1 cm. Arrows in (a), (d), (e), and (f) indicate the last septal suture.

and belemnites (4–20 m). At the top of this interval, a mineralized hard ground is present (HG2).

In the northwestern sector (Clarissia, Roccaniera), HG2 is followed by a condensed interval made up of glauconitic–phosphatic limestones (120–140 cm, with *Moutoniceras* sp. and belemnites), bioclastic–lithoclastic conglomerates (50–60 cm), and glauconitic limestones (50–60 cm). The conglomerates are made up of reworked bioclasts and centimetre-sized, angular to subrounded limestone intraclasts, commonly phosphatized or impregnated by Fe-oxides. The reworked bioclasts include ammonites (*Barremites difficilis*, *Macroscaphites* sp., *Hypophylloceras ponticuli*, *Pseudohaploceras matheroni*, *Pachyhemihoplites contei*, *Pachyhemihoplites dardeau*, *Martelites* sp., *Gassendicerus alpinum*, *Peirescites*

sp., *Heinzia sayni*, *Gerhardtia provincialis*, *Gerhardtia* sp., *Coronites darsi*, *Kotetishvilia sauvageaui*, *Hemihoplites feraudianus*, *Hemihoplites astarte*, *Hemihoplites soulieri*, *Hemihoplites* sp., *Emericiceras* sp., *Imerites giraudi*, *Heteroceras baylei*, *Heteroceras emerici*, *Argvethites* sp., *Audoliceras* sp., *Camericeras* sp., *Lytoceras* sp.) (Figure 5(b–f)), belemnites, nautiloids (*Cymatoceras* sp.), brachiopods, gastropods, bryozoans, and wood fragments. This interval shows important lateral variations: at Saint Laurent it is represented by a 40–50 cm-thick bioclastic–lithoclastic conglomerate bed, followed by a 15–20 cm-thick bed of glauconitic limestone; in the eastern and southern sectors (Albaretta, Vallon du Parais) it reduces to a centimetre-thick bioclastic–lithoclastic lag resting on HG2.

5.2.3. Grès Verts (early Aptian p.p.–early Cenomanian p.p.; Thomel, 1992; Thomel & Lanteaume, 1967)

In the western sector, this unit starts with a 8–10-metre-thick alternation of glaucony-rich dark marls and marly limestones, with ammonites (*Lithancylus* sp.) and nautiloids (*Paracymatoceras* sp.). At the top of this interval, a mineralized hard ground (HG3) is followed by a decimetre-thick bioclastic–lithoclastic conglomerate bed. In the eastern sector (Vallon du Parais), this interval is not present and the Grès Verts lies on a polygenic hard ground (HG2 + HG3), developed at the top of the Clarissia Formation and followed by a centimetre-thick bioclastic–lithoclastic lag.

The rest of the unit is made up of decimetre-thick beds of bioturbated glauconitic marly limestones, with ammonite molds (*Puzosia* sp.) and echinoids, associated with thick-bedded hybrid glauconitic arenites and glauconarenites, commonly bioturbated, with large-scale cross-stratification (Parize et al., 2005; Pasquini et al., 2004) and decimetre-sized, brownish carbonate concretions (20–40 m). At the top, a decimetre-thick bed of bioturbated, fossil- and glaucony-rich calcareous marl is present. It contains early Cenomanian (*saxbii* Subzone) ammonites (*Mantelliceras picteti* (Figure 5(g)), *Mantelliceras mantelli*, *Mantelliceras cantianum*, *Mantelliceras tuberculatum*, large macroconchs of *Puzosia* sp. (Figure 4(c)), *Schloembachia* sp.), echinoids (*Protocardia* sp., *Camerogalerus* sp.), brachiopods, belemnites, bivalves, and lamniform selachian teeth (Figure 4(d)). This bed marks the drowning of the shelf.

5.3. Upper Cretaceous succession

This consists of a thick, deep-water hemipelagic succession of marls and marl–limestone alternations.

5.3.1. Saint Laurent Marl (early Cenomanian p.p.–late Cenomanian; Conard, 1978; Thomel, 1992)

Grey, clayey–silty marls, with decimetre-thick marly limestone interbeds whose thickness and frequency increase towards the top of the unit. The fossil content in the lower part of the unit is abundant: ammonites (*Mantelliceras saxbii*, *Schloembachia subvarians*, *Puzosia mayoriana*, *Hypoturrilites* sp., *Turrilites costatus*, *Cunningtoniceras cunningtoni* (Figure 5(h)), *Acanthoceras rhotomagense*, *Eucalycoceras* sp., *Calycoceras* sp., *Newboldiceras* sp., Phylloceratinae), terebratulids, belemnites (*Neohibolites* sp.), echinoids (*Camerogalerus cylindricus*, *Holaster subglobosus*), and bivalves (*Inoceramus* sp.). Thickness: 60–80 m.

5.3.2. Mont Auri Limestone (Turonian–late Coniacian p.p.; Conard & Manivit, 1979)

Marly limestones (planktonic-foraminifera mudstones and wackestones) with thin marl interbeds, passing

towards the top to medium-bedded limestones (bioclastic wackestones and packstones), with echinoids (*Micraster* sp., *Holaster* sp.) and bivalves (*Inoceramus* sp.). In the upper part, grey-coloured chert nodules, and thin- to medium-bedded resedimented glauconitic lithoarenites and hybrid glauconitic arenites are present. These beds have an erosional base, locally followed by imbricated clay chips or by a centimetre-thick lag consisting of *Inoceramus* fragments, and show normal grading and parallel lamination. Thickness: 300 m.

5.3.3. Caire de Braus Marl (late Coniacian p.p.–middle Campanian; Conard & Manivit, 1979)

Alternation of medium- to thick-bedded marls and marly limestones (Figure 4(e)), commonly bioturbated (*Zoophycos*), with *Inoceramus* sp., echinoids, planktonic foraminifera and rare ammonite molds. In the uppermost 100 m, thin resedimented beds of bioclastic packstones with planktonic foraminifera and glaucony are present, showing an erosional base, normal grading, and parallel lamination. Thickness: 350 m.

5.4. Alpine Foreland Basin succession

This is represented in the study area by the *Microcodium* Formation, the Nummulitic Limestone and the *Globigerina* Marl, cropping out in the core of the Col de Braus, l'Escarène and Mortisson synclines.

5.4.1. Microcodium Formation (Lutetian?–early Bartonian; Varrone & Clari, 2003)

Lenticular bodies, 0–15 m thick, including from base to top the following, laterally discontinuous, facies and facies associations:

- polygenic, clast-supported conglomerates, with marly limestone and limestone clasts (locally encrusted by *Microcodium*) mainly derived from the underlying Upper Cretaceous succession, with arenitic or marly matrix with *Microcodium* fragments (S Col de Braus syncline; l'Escarène; Blanchières) (alluvial fan–fluvial deposits);
- silty marls, containing decimetre-thick, lens-shaped bodies of clast-supported conglomerates and decimetre-thick beds of quartz-rich arenites with reworked glaucony grains (NE l'Escarène syncline; Mont Brec) (alluvial plain sediments with channelized fluvial deposits);
- medium- to coarse-grained, thick-bedded quartzarenites, with erosional base, clay chips, and trough cross-stratification, locally containing centimetre-thick conglomerate beds (SW Col de Braus syncline). *Ophiomorpha* burrows are locally preserved as hypichnia at the base of this interval (coastal deposits).

The *Microcodium* Formation represents the infilling of an incised valley system during the first stage of the Alpine Foreland Basin development (Varrone & Clari, 2003).

5.4.2. *Nummulitic Limestone (Bartonian p.p.; Varrone & Clari, 2003)*

This unit consists of mixed siliciclastic–carbonate ramp deposits. Its base is represented by a transgressive erosional surface, locally covered by a centimetre- to decimetre-thick conglomerate lag and developed on the *Microcodium* Formation or directly on top of the Upper Cretaceous succession. In the latter case, it consists of a polygenic discontinuity surface, pitted by abundant *Gastrochaenolites* bivalve borings (Figure 4 (f)). From base to top, the following facies and facies associations are present:

- thick- to very thick-bedded, medium- to coarse-grained quartzarenites showing an erosional base and normal gradation, grading upward to medium- to fine-grained bioclastic–lithic arenites, with larger benthic foraminifera (*Nummulites*), ostreids, echinoids and rare solitary corals (inner- to middle-ramp deposits);
- medium-bedded, medium- to fine-grained allochemic sandstones and siltstones, with *Nummulites*, bivalves, gastropods, solitary corals, echinoids, scaphopods, and *Teredolites*-bored wood fragments, passing upward to an alternation of intensely bioturbated, fine-grained allochemic sandstones and calcareous marls (outer ramp deposits).

In the Col de Braus syncline, the top of the unit is represented by a decimetre-thick interval of fine-grained, glaucony-bearing hybrid arenites, locally containing cold-water colonial corals (whose study is currently in progress). This interval marks the drowning of the ramp.

5.4.3. *Globigerina Marl (late Bartonian p.p.–Priabonian; Varrone, 2004)*

Dark-grey, deep-water hemipelagic silty marls, light-grey to yellowish on the weathered surface, with abundant planktonic foraminifera and rare bivalves, showing centimetre- to decimetre-thick bedding, commonly obliterated by intense bioturbation.

5.5. Quaternary deposits

The detailed study of Quaternary deposits is out of the scope of this work, therefore they will be only listed as they appear on the map. They have been subdivided into five large groups: anthropogenic deposits; undifferentiated alluvial deposits; slope and talus debris; cemented talus breccias; landslide accumulations.

6. Lucéram arsenic mine

At Roccaniera, near Lucéram, an arsenic mineralization was exploited during the nineteenth and early twentieth centuries (Caméré, 1877; Lacroix, 1897; Orcel, 1918). The mineralization affects the Grès Verts and the lower part of the Saint Laurent Marl and consists of

decimetre-thick, nearly bed-parallel veins, filled-up by calcite, orpiment, realgar, barite and fluorite (Féraud, 1970). It also yielded specimens of talmessite, a rare arsenate mineral (Mari & Mari, 1982).

7. Conclusions

The 1:10,000 Geological Map of the Col de Braus area provides a detailed representation of a sector of great scientific relevance, which also represents a historical locality for SE France geology. This map constitutes a useful complementary document to address specific features regarding both stratigraphic and structural issues of lively geological interest, namely:

- the stratigraphy and sedimentology of Lower Cretaceous condensed deposits, which have been the focus of various recent publications (e.g. Barale et al., 2013; Decarlis & Lualdi, 2008; Pasquini et al., 2004);
- the distribution of laterally discontinuous continental deposits at the base of the Alpine Foreland Basin succession (*Microcodium* Formation), as well as the position of the outcrops with newly reported colonial cold-water corals at the top of the Nummulitic Limestone; and
- the structural setting of an area located at the western termination of a large structural domain, extending across the Ligurian and the Maritime Alps, which has been the subject of detailed structural and stratigraphic analysis.

Acknowledgements

The authors thank the Referees Simone Arragoni, Mike Shand, and Thierry Dumont, whose useful suggestions really improved both the manuscript and the geological map.

Disclosure statement

No potential conflict of interest was reported by the authors.

Software

The compilation of the geological map, including the preparation of the topographic base, was performed using QuantumGis 2.0 Dufour. The final layout of the map, the geologic sections, the tectonic sketch map, and the figures have been prepared and assembled using ACD® Canvas12.

References

- Barale, L. (2010). *La successione giurassico–cretacica del Dominio Delfinese-Provenzale (Col de Braus, Francia)* (Unpublished master's thesis). Torino: Università di Torino.
- Barale, L., d'Atri, A., & Martire, L. (2013). The role of microbial activity in the generation of Lower Cretaceous mixed Fe-oxide–phosphate ooids from the Provençal

- domain, French Maritime Alps. *Journal of Sedimentary Research*, 83, 196–206. doi:10.2110/jsr.2013.15
- Beaumont, A. (1795). *Travels through the Maritime Alps, from Italy to Lyons, across the Col de Tende, by the way of Nice, Provence, Languedoc, &c. with topographical and historical descriptions*. London: Bensley.
- Bert, D., & Delanoy, G. (2000). Considérations nouvelles sur quelques représentants barrémiens des Pulchellidae DOUVILLÉ, 1890 et des Hemihoplitidae SPATH, 1924 (Ammonoidea) [New considerations about some Barremian representatives of the Pulchellidae DOUVILLÉ, 1890 and of the Hemihoplitidae SPATH, 1924 (Ammonoidea)]. *Annales du Muséum d'Histoire Naturelle de Nice*, 15, 63–89.
- Bert, D., Delanoy, G., & Bersac, S. (2006). Descriptions de représentants nouveaux ou peu connus de la famille des Hemihoplitidae SPATH, 1924 (Barrémien supérieur, Sud-est de la France): Conséquences taxinomiques et phylétiques [Descriptions of new or poorly known representatives of the family Hemihoplitidae SPATH, 1924 (late Barremian, SE of France): taxonomic and phyletic consequences]. *Annales du Muséum d'Histoire Naturelle de Nice*, 21, 179–253.
- Boussac, J. (1912). *Études stratigraphiques sur le Nummulitique alpin* [Stratigraphic studies on the Alpine Nummulitic]. Paris: Imprimerie Nationale.
- Buckland, W. (1829). Observations on the secondary formations between Nice and the Col di Tendi. *Transactions of the Geological Society of London, Series 2*, 3(1), 187–190.
- Bulard, P. F., Chamagne, B., Dardeau, G., Delteil, J., Gioan, P., Ivaldi, J. P., ... Polvêche, J. (1975). Sur la genèse des structures de l'Arc de Nice [On the genesis of the structures of the Nice Arc]. *Bulletin de la Société Géologique de France* (7), 17, 939–944.
- Caméré, M. (1877). Note sur la Carte géologique d'une portion du département des Alpes-Maritimes [Note on the geological map of a part of the Alpes-Maritimes department]. *Bulletin de la Société Géologique de France* (3), 5, 803–808.
- Conard, M. (1978). Le Cénomaniens des Alpes-Maritimes: biozonation par les Globotruncanidés [The Cenomanian of the Maritime Alps: Globotruncanid biozonation]. *Géologie Méditerranéenne*, 5(1), 65–68.
- Conard, M., & Manivit, H. (1979). Contribution à l'étude biostratigraphique du Crétacé supérieur d'une coupe du Massif du Braus (Alpes-Maritimes, SE France) [Contribution to the biostratigraphic study of a Upper Cretaceous section of the Braus Massif (Maritime Alps, SE France)]. *Geobios*, 12, 437–443.
- Crampton, S. L., & Allen, P. A. (1995). Recognition of forebulge unconformities associated with early stage foreland basin development: example from the North Alpine Foreland Basin. *AAPG Bulletin*, 79, 1495–1514.
- Dardeau, G. (1983). *Le jurassique des Alpes-Maritimes (France). Stratigraphie, paléogéographie, evolution du context structural à la jonction des dispositifs dauphinois, briançonnais et provençal*. (Unpublished doctoral dissertation). Nice: Université de Nice.
- Dardeau, G. (1988). Tethyan evolution and Alpine reactivation of Jurassic extensional structures in the French "Alpes Maritimes". *Bulletin de la Société Géologique de France* (8), 4, 651–657.
- Dardeau, G., & Pascal, A. (1982). La regression fin-Jurassique dans les Alpes-Maritimes: Stratigraphie, faciès, environnements sédimentaires et influence du bâti structural dans l'Arc de Nice [The end-Jurassic regression in the Maritime Alps: Stratigraphy, facies, sedimentary environments and influence of the structural setting in the Nice Arc]. *Bulletin du B.R.G.M.*, 3, 193–204.
- Dardeau, G., & Thierry, J. (1976). Discontinuité de sédimentation et biostratigraphie a la base du Jurassique supérieur de la partie méridionale de l'Arc de Nice, entre La Turbie et Eze (Alpes-Maritimes) [Sedimentation discontinuity and biostratigraphy at the base of the upper Jurassic of the southern Nice Arc, between La Turbie and Eze (Maritime Alps)]. *Bulletin de la Société Géologique de France* (7), 18, 1631–1635.
- d'Atri, A., Piana, F., Barale, L., Bertok, C., & Martire, L. Geological setting of the southern termination of Western Alps. *International Journal of Earth Sciences*. Manuscript submitted for publication.
- Debelmas, J., & Kerckhove, C. (1980). Les Alpes franco-italiennes [The French-Italian Alps]. *Géologie Alpine*, 56, 21–58.
- Decarlis, A. (2005). *Fasi deposizionali terminali delle piattaforme carbonatiche mesozoiche delfinesi-provenzali (arco di Nizza)* (Unpublished doctoral dissertation). Pavia: Università di Pavia.
- Decarlis, A., & Lualdi, A. (2008). Stratigraphy and deposition of Lower Cretaceous condensed deposits in the Maritime Alps (Nice arc, SE France). *Italian Journal of Geosciences*, 127, 13–24.
- Delanoy, G. (1990). *Camereiceras nov. gen.* (Ammonoidea, Ancyloceratina) du Barrémien supérieur du Sud-Est de la France [*Camereiceras nov. gen.* (Ammonoidea, Ancyloceratina) of the late Barremian of SE France]. *Geobios*, 23, 71–93.
- Delanoy, G. (1992). Les ammonites du Barrémien supérieur de Saint-Laurent de l'Escarène (Alpes-Maritimes, Sud-Est de la France) [Late Barremian ammonites of Saint-Laurent de l'Escarène (Maritime Alps, SE France)]. *Annales du Muséum d'Histoire Naturelle de Nice*, 9, 1–148.
- Delanoy, G., Magnin, A., Selebran, M., & Selebran, J. (1991). *Moutoniceras nodosum* D'ORBIGNY, 1850 (Ammonoidea, Ancyloceratina). Une très grande ammonite hétéromorphe du Barrémien inférieur [*Moutoniceras nodosum* D'ORBIGNY, 1850 (Ammonoidea, Ancyloceratina). A very large heteromorphic ammonite of the early Barremian]. *Revue de Paléobiologie*, 10, 229–245.
- Demay, J. L. (1984). Alpes Méridionales [Southern Alps]. In S. Debrand-Passard, S. Courbouleix & M.J. Lienhardt (Eds.), *Synthèse géologique du Sud-Est de la France*, 125 (pp. 317–319). Orléans: Bureau de Recherches Géologiques et Minières.
- Fallot, E. (1885). Etude géologique sur les étages moyen et supérieur du terrain crétacé dans le SE de la France [Geological study on the Middle and Upper Cretaceous succession in the SE of France]. *Annales des Sciences Géologiques*, 18, 1–268.
- Faure-Muret, A., & Fallot, P. (1954). Sur le Secondaire et le Tertiaire aux abords sud-orientaux du massif de l'Argentera-Mercantour [On the Secondary and Tertiary successions at the southeastern edge of the Argentera-Mercantour Massif]. *Bulletin du Service de la Carte Géologique de France*, 241, 189–198.
- Féraud, J. (1970). *Les gisements de sulfures d'arsenic des Alpes Maritimes et de la Corse* (Public Report No. RME-041-RMM). Orléans: BRGM.
- Ford, M., Lickhorish, W. H., & Kuznir, N. J. (1999). Tertiary foreland sedimentation in the Southern Subalpine Chains,

- SE France: A geodynamics appraisal. *Basin Research*, 11, 315–336. doi:10.1046/j.1365-2117.1999.00103.x
- Gèze, B. (1963). Caractères structuraux de l'Arc de Nice (Alpes-Maritimes) [Structural characters of the Nice Arc (Maritime Alps)]. *Mémoire hors série de la Société Géologique de France*, 2, 289–300.
- Gèze, B., Lanteaume, M., Peyre, Y., & Vernet, J. (1968). *Carte Géologique au 1/50000 Menton-Nice, XXXVII-42-43*. Orléans: BRGM.
- Gignoux, M., & Moret, L. (1937). Sur l'extension des lagunes purbeckiennes dans le Sud-Est de la France [On the extension of Purbeckian lagoons in SE France]. *Comptes rendus sommaires des séances de la Société Géologique de France*, 116–117.
- Götz, A. E., Feist-Burkhardt, S., & Ruckwied, K. (2008). Palynofacies and sea-level changes in the Upper Cretaceous of the Vocontian basin, southeast France. *Cretaceous Research*, 29, 1047–1057. doi:10.1016/j.cretres.2008.05.029
- Guardia, P., Ivaldi, J. P., Dubar, M., Guglielmi, Y., & Perez, J.-L. (1996). Paléotectonique linéamentaire et tectonique active des Alpes Maritimes franco-italiennes: une synthèse [Lineamentar paleotectonics and active tectonics of the French-Italian Maritime Alps: A synthesis]. *Géologie de la France*, 1, 43–55.
- Hébert, E. (1877). Coupe du terrain crétacé de Saint-Laurent [Stratigraphic section of the Cretaceous succession of Saint-Laurent]. *Bulletin de la Société Géologique de France* (3), 5, 810.
- Kilian, W., & Reboul, P. (1908). Quelques observations géologiques dans la région sud-est des Alpes Maritimes [Some geological observations in the southeastern sector of the Maritime Alps]. *Bulletin de la Carte Géologique de France*, 119, 155–165.
- Lacroix, A. (1897). *Minéralogie de la France et de ses colonies* [Mineralogy of France and its colonies]. Paris: Librairie Polytechnique, Baudry et C. Éditeurs.
- Lanteaume, M. (1968). *Contribution à l'étude géologique des Alpes Maritimes franco-italiennes* [Contribution to the geological study of the French-Italian Maritime Alps]. Paris: Mém. Carte Géol.
- Mari, D., & Mari, G. (1982). *Mines et minéraux des Alpes Maritimes* [Mines and minerals of the Maritime Alps]. Nice: Serre éditeur.
- Montenat, C., Hibsich, C., Perrier, J. C., Pascaud, F., & de Bretzel, P. (1997). Tectonique cassante d'âge crétacé inférieur dans l'Arc de Nice (Alpes-Maritimes, France) [Early Cretaceous brittle tectonics in the Nice Arc (Maritime Alps, France)]. *Géologie Alpine*, 73, 59–66.
- Omalius d'Halloy, J. J. (1810). Notice géologique sur la route du Col de Tende, dans les Alpes maritimes, précédée de Considérations sur les terrains intermédiaires [Geological note on the Col de Tende road, in the Maritime Alps, preceded by considerations on the intermediate rocks]. *Journal des Mines*, 28, 169–196.
- Orcel, J. (1918). Les gisements d'orpiment et de réalgar de Lucéram et de Duranus (Alpes-Maritimes) [The orpiment and realgar ore deposits of Lucéram and Duranus (Maritime Alps)]. *Bulletin de la Société Française de Minéralogie*, 41, 176–180.
- Parize, O., Fiet, N., Friès, G., Imbert, P., Latil, J.-L., Rubino, J.-L., & Viana, A. (2005). “Depositional dynamics of glaucony-rich deposits in the Lower Cretaceous of the Nice arc, southeast France” [Cretaceous Research 25 (2004) 179–189] – Discussion. *Cretaceous Research*, 26, 726–730. doi:10.1016/j.cretres.2005.05.001
- Pasquini, C., Lualdi, A., & Vercesi, P. L. (2004). Depositional dynamics of glaucony-rich deposits in the Lower Cretaceous of the Nice arc, southeast France. *Cretaceous Research*, 25, 179–189. doi:10.1016/j.cretres.2003.11.005
- Pasquini, C., & Vercesi, P. L. (1999). Sedimentazione condensata barremiano-cenomaniana al margine sud-orientale della zona Delfinese-Provenzale [Barremian-Cenomanian condensed sedimentation at the southeastern margin of the Provençal-Dauphinois Domain]. *Giornale di geologia*, 61, 249–251.
- Perez, A. (1847). Comunicazione sui limiti del terreno cretaceo delle Alpi Marittime [Report on the limits of the Cretaceous rocks of the Maritime Alps]. In *Atti della ottava riunione degli scienziati italiani* (pp. 651–658). Genova: Tipografia Ferrando.
- Perez, J.-L. (1975). La zone limite entre l'arc de Nice et l'arc de la Roya (Alpes Maritimes). Observations structurales [The boundary zone between the Nice Arc and the Roya Arc (Maritime Alps). Structural observations]. *Bulletin de la Société Géologique de France*, (7), 7, 930–938.
- Piana, F., Battaglia, S., Bertok, C., d'Atri, A., Ellero, A., Leoni, L., ... Perotti, E. (2014). Illite (KI) and chlorite (AI) ‘crystallinity’ indices as a constraint for the evolution of the external Briançonnais front in western Ligurian Alps (NW Italy). *Italian Journal of Geosciences*, 133, 445–454. doi:10.3301/IJG.2014.21
- Potier. (1877). Compte-rendu de la course de L'Escarène et du Col de Braus [Report on the field trip to L'Escarène and the Col de Braus]. *Bulletin de la Société Géologique de France* (3), 5, 808–811.
- Risso, A. (1826). *Histoire naturelle des principales productions de l'Europe Méridionale et particulièrement de celles des environs de Nice et des Alpes Maritimes. Tome Premier* [Natural history of the main productions of Southern Europe and in particular of those of the surroundings of Nice and of the Maritime Alps. Volume I]. Paris: Lévrault.
- Sinclair, H. D. (1997). Tectonostratigraphic model for underfilled peripheral foreland basins: An Alpine perspective. *GSA Bulletin*, 109, 324–346. doi:10.1130/0016-7606(1997)109<0324:TMFUP>2.3.CO;2
- Sismonda, A. (1848). Notizie e schiarimenti sulla costituzione della Alpi piemontesi [Information and explanations about the constitution of the Piedmont Alps]. *Memorie della Reale Accademia delle Scienze, Torino*, 9, 1–123.
- Sulzer, J. G. (1780). *Tagebuch einer von Berlin nach den mittäglichen Ländern von Europa in den Jahren 1775 und 1776 gethanen Reise und Rückreise* [Diary of a round trip from Berlin to the lands of the Southern Europe in the years 1775 and 1776]. Leipzig: Weidmann.
- Thomel, G. (1992). *Ammonites du Cénoomanien et du Turonien du Sud-Est de la France* [Ammonites of the Cenomanian and the Turonian of SE France]. Nice: Serre éditeur.
- Thomel, G., & Lanteaume, M. (1967). Considérations sur la mise en évidence des dépôts aptiens dans la région niçoise [Considerations about the discovery of Aptian deposits in the Nice area]. *Comptes Rendus de l'Académie des Sciences de Paris*, 265, 1456–1459.
- Varrone, D. (2004). *Le prime fasi di evoluzione del bacino di avanfossa alpino: la successione delfinese cretaceo-eocenica, Alpi Marittime* (Unpublished doctoral dissertation). Torino: Università di Torino.
- Varrone, D., & Clari, P. (2003). Stratigraphic and paleoenvironmental evolution of the *Microcodium* Formation and the Nummulitic Limestones in the French-Italian Maritime Alps. *Geobios*, 36, 775–786.
- Wilson, J. L. (1975). *Carbonate facies in geologic history*. Berlin: Springer-Verlag.