

AperTO - Archivio Istituzionale Open Access dell'Università di Torino

## **Helicobacter pylori infection and asthma: Is there a direct or an inverse association? A meta-analysis**

### **This is the author's manuscript**

*Original Citation:*

*Availability:*

This version is available <http://hdl.handle.net/2318/1632804> since 2019-07-30T14:24:05Z

*Published version:*

DOI:10.13105/wjma.v4.i3.63

*Terms of use:*

Open Access

Anyone can freely access the full text of works made available as "Open Access". Works made available under a Creative Commons license can be used according to the terms and conditions of said license. Use of all other works requires consent of the right holder (author or publisher) if not exempted from copyright protection by the applicable law.

(Article begins on next page)

# World Journal of *Meta-Analysis*

*World J Meta-Anal* 2016 June 26; 4(3): 63-76



**META-ANALYSIS**

- 63 *Helicobacter pylori* infection and asthma: Is there a direct or an inverse association? A meta-analysis  
*Ribaldone DG, Fagoonee S, Colombini J, Saracco G, Astegiano M, Pellicano R*
- 69 Efficacy, safety, and dose comparison of degarelix for the treatment of prostate cancer: A systematic review and meta-analysis  
*Fang C, Wu CL, Liu SS, Ge L, Bai JL*

**ABOUT COVER**

Editorial Board Member of *World Journal of Meta-Analysis*, Bing-Yang Ji, MD, PhD, Associate Professor, Cardiopulmonary Bypass, Fuwai Hospital, Beijing 100037, China

**AIM AND SCOPE**

*World Journal of Meta-Analysis (World J Meta-Anal, WJMA)*, online ISSN 2308-3840, DOI: 10.13105) is a peer-reviewed open access academic journal that aims to guide clinical practice and improve diagnostic and therapeutic skills of clinicians, with a specific focus on meta-analysis, systematic review, mixed-treatment comparison, meta-regression, overview of reviews.

*WJMA* covers a variety of clinical medical fields including allergy, anesthesiology, cardiac medicine, clinical genetics, clinical neurology, critical care, dentistry, dermatology, emergency medicine, endocrinology, family medicine, gastroenterology and hepatology, geriatrics and gerontology, hematology, immunology, infectious diseases, internal medicine, obstetrics and gynecology, oncology, ophthalmology, orthopedics, otolaryngology, pathology, pediatrics, peripheral vascular disease, psychiatry, radiology, rehabilitation, respiratory medicine, rheumatology, surgery, toxicology, transplantation, and urology and nephrology, while maintaining its unique dedication to systematic reviews and meta-analyses.

**INDEXING/ABSTRACTING**

*World Journal of Meta-Analysis* is now indexed in Emerging Sources Citation Index (Web of Science).

**FLYLEAF**

I-IV Editorial Board

**EDITORS FOR THIS ISSUE**

**Responsible Assistant Editor:** *Xiang Li*  
**Responsible Electronic Editor:** *Dan Li*  
**Proofing Editor-in-Chief:** *Lian-Sheng Ma*

**Responsible Science Editor:** *Shui Qiu*  
**Proofing Editorial Office Director:** *Xiu-Xia Song*

**NAME OF JOURNAL**  
*World Journal of Meta-Analysis*

**ISSN**  
 ISSN 2308-3840 (online)

**LAUNCH DATE**  
 May 26, 2013

**FREQUENCY**  
 Bimonthly

**EDITOR-IN-CHIEF**  
**Giuseppe Biondi-Zoccai, MD, Assistant Professor,**  
 Department of Medico-Surgical Sciences and Biotechnologies, Sapienza University of Rome, Latina 04100, Italy

**EDITORIAL OFFICE**  
 Jin-Lei Wang, Director  
 Xiu-Xia Song, Vice Director  
*World Journal of Meta-Analysis*  
 Room 903, Building D, Ocean International Center,

No. 62 Dongsihuan Zhonglu, Chaoyang District, Beijing 100025, China  
 Telephone: +86-10-85381891  
 Fax: +86-10-85381893  
 E-mail: editorialoffice@wjnet.com  
 Help Desk: <http://www.wjnet.com/esps/helpdesk.aspx>  
<http://www.wjnet.com>

**PUBLISHER**  
 Baishideng Publishing Group Inc  
 8226 Regency Drive,  
 Pleasanton, CA 94588, USA  
 Telephone: +1-925-223-8242  
 Fax: +1-925-223-8243  
 E-mail: bpgoffice@wjnet.com  
 Help Desk: <http://www.wjnet.com/esps/helpdesk.aspx>  
<http://www.wjnet.com>

**PUBLICATION DATE**  
 June 26, 2016

**COPYRIGHT**  
 © 2016 Baishideng Publishing Group Inc. Articles

published by this Open-Access journal are distributed under the terms of the Creative Commons Attribution Non-commercial License, which permits use, distribution, and reproduction in any medium, provided the original work is properly cited, the use is non commercial and is otherwise in compliance with the license.

**SPECIAL STATEMENT**  
 All articles published in journals owned by the Baishideng Publishing Group (BPG) represent the views and opinions of their authors, and not the views, opinions or policies of the BPG, except where otherwise explicitly indicated.

**INSTRUCTIONS TO AUTHORS**  
 Full instructions are available online at [http://www.wjnet.com/bpg/g\\_info\\_20160116143427.htm](http://www.wjnet.com/bpg/g_info_20160116143427.htm)

**ONLINE SUBMISSION**  
<http://www.wjnet.com/esps/>

## ***Helicobacter pylori* infection and asthma: Is there a direct or an inverse association? A meta-analysis**

Davide Giuseppe Ribaldone, Sharmila Fagoonee, Jacopo Colombini, Giorgio Saracco, Marco Astegiano, Rinaldo Pellicano

Davide Giuseppe Ribaldone, Marco Astegiano, Gastroenterology - U, Department of General and Specialist Medicine, Città della Salute e della Scienza of Turin, 10126 Turin, Italy

Sharmila Fagoonee, Institute for Biostructures and Bioimages-CNR c/o Molecular Biotechnology Center, University of Turin, 10126 Turin, Italy

Jacopo Colombini, Otorhinolaryngoiatry - 2, Department of General and Specialist Surgical, Città della Salute e della Scienza of Turin, 10126 Turin, Italy

Giorgio Saracco, Department of Oncology, San Luigi Hospital, 10043 Orbassano, Italy

Rinaldo Pellicano, Department of Gastroenterology and Hepatology, Molinette Hospital, 10126 Torino, Italy

**Author contributions:** Ribaldone DG, Fagoonee S and Colombini J performed the research; Ribaldone DG, Fagoonee S, Colombini J and Pellicano R analyzed the data; Ribaldone DG, Fagoonee S and Pellicano R wrote the paper; Ribaldone DG, Saracco G, Astegiano M and Pellicano designed the research.

**Conflict-of-interest statement:** None to declare.

**Data sharing statement:** No additional data are available.

**Open-Access:** This article is an open-access article which was selected by an in-house editor and fully peer-reviewed by external reviewers. It is distributed in accordance with the Creative Commons Attribution Non Commercial (CC BY-NC 4.0) license, which permits others to distribute, remix, adapt, build upon this work non-commercially, and license their derivative works on different terms, provided the original work is properly cited and the use is non-commercial. See: <http://creativecommons.org/licenses/by-nc/4.0/>

**Manuscript source:** Invited manuscript

**Correspondence to:** Rinaldo Pellicano, MD, Department of Gastroenterology and Hepatology, Molinette Hospital, Ambulatori S.G.A.S, Via Cavour 31, 10126 Torino, Italy. [rinaldo\\_pellican@hotmail.com](mailto:rinaldo_pellican@hotmail.com)

Telephone: +39-011-6335208

Fax: +39-011-6336752

Received: April 2, 2016

Peer-review started: April 6, 2016

First decision: May 17, 2016

Revised: May 20, 2016

Accepted: June 1, 2016

Article in press: June 3, 2016

Published online: June 26, 2016

### **Abstract**

**AIM:** To analyze the consistency of a potential involvement of the bacterium infection in the asthma disease.

**METHODS:** A systematic literature search of the terms "*Helicobacter pylori*" (*H. pylori*) associated to "asthma" using PubMed, Scopus and the Cochrane Library Central was performed. Reference lists from published articles were also employed. Titles of these publications and their abstracts were scanned in order to eliminate duplicates and irrelevant articles. The criteria of inclusion of the studies were: Original studies; the *H. pylori* diagnostic method has been declared; all ranges of age have been included in our study; a definitive diagnosis of asthma has been reported.

**RESULTS:** We selected 14 articles in which the association between the two conditions was addressed. In 7 studies the prevalence of *H. pylori* infection in the asthma population and in the control population was made explicit. There was heterogeneity between the studies (Cohran's Q = 0.02). The *H. pylori* infection in the asthma population resulted 33.6% (518 of 1542), while in the control population resulted 37.6% (2746 of 7310) (relative risk of *H. pylori* infection in the asthma population = 0.87, 95%CI: 0.72-1.05, *P* = 0.015, random effects model). Instead, considering the more

virulent strains, the majority of studies showed an inverse relationship between the prevalence of *H. pylori* infection and asthma.

**CONCLUSION:** In our meta-analysis the prevalence of *H. pylori* infection in the asthma population resulted not statistically significant lower than in control population ( $P = 0.15$ ). Instead, considering the more virulent strains, the majority of studies showed an inverse relationship between the prevalence of *H. pylori* infection and asthma.

**Key words:** Allergic diseases; Asthma; Extragastric manifestations; *Helicobacter pylori*; Hygiene

© **The Author(s) 2016.** Published by Baishideng Publishing Group Inc. All rights reserved.

**Core tip:** The relationship between *Helicobacter pylori* infection and asthma is an important issue, since it could influence the choice of treatment. In our meta-analysis the prevalence of the infection in the asthma population resulted not statistically significant lower than in control population.

Ribaldone DG, Fagoonee S, Colombini J, Saracco G, Astegiano M, Pellicano R. *Helicobacter pylori* infection and asthma: Is there a direct or an inverse association? A meta-analysis. *World J Meta-Anal* 2016; 4(3): 63-68 Available from: URL: <http://www.wjgnet.com/2308-3840/full/v4/i3/63.htm> DOI: <http://dx.doi.org/10.13105/wjma.v4.i3.63>

## INTRODUCTION

Asthma is a common respiratory disease, manifested by inflammatory and obstructive processes, secondary to multiple stimuli<sup>[1]</sup>.

The etiology of asthma remains largely unclear. In the latest decades the prevalence of allergic asthma increased in children<sup>[2]</sup>. The reason is unknown. Changes in personal or maternal smoking habits, types of dwelling, adaptation to Western dietary habits, less infections, as a consequence of vaccinations, decreased family size and hygiene<sup>[3]</sup>, air pollution, work exposure or changed microbiota due to occidental style of life<sup>[4]</sup> might be possible causes<sup>[5]</sup>. Some infectious agents, that affect specific organs, can also cause systemic diseases. Hence, it has been postulated that infections drive the differentiation of T helper (Th) cells to the Th1 subtype with resulting suppression of the Th2 subtype, involved in IgE-mediated allergy<sup>[3,6]</sup>. However, the theory that some infections in early childhood may prevent atopic sensitization (the "hygiene hypothesis")<sup>[7]</sup> is hotly debated<sup>[8]</sup>.

The *Helicobacter pylori* (*H. pylori*) is a gram-negative, spiral shape, mobile, microaerophilic bacillus<sup>[9]</sup> that we can find in all over the world<sup>[10]</sup>. The *H. pylori* infection

is chronic and the humans are infected in the first 10 years of age, especially in children living in family with a low socio-economic status. In the latest two decades links between *H. pylori* infection and extragastric manifestations have been reported<sup>[11]</sup>. The diseases in which a possible role of *H. pylori* has been hypothesized are cardiovascular diseases, hepatic diseases, skin diseases, rheumatologic diseases, blood diseases, etc<sup>[12,13]</sup>.

The present review attempts to highlight the data regarding a potential link between *H. pylori* and asthma<sup>[14]</sup>.

## MATERIALS AND METHODS

### Literature search

PRISMA statement guidelines were followed for conducting and reporting meta-analysis data<sup>[15]</sup>. PICOS scheme was followed for reporting inclusion criteria.

A MEDLINE, Scopus and the Cochrane Library Central query "*Helicobacter pylori*" or "*Helicobacter*" and "asthma" was performed. Reference lists from published articles were also employed. Titles of these publications and their abstracts were scanned in order to eliminate duplicates and irrelevant articles. The last access was dated March 12, 2016. Articles not in English were read by a specific native speaker.

### Study selection

The criteria of inclusion of the studies were: (1) original studies; (2) the *H. pylori* diagnostic method has been declared; (3) all ranges of age have been included in our study; and (4) a definitive diagnosis of asthma has been reported.

### Data extraction

Two authors (Fagoonee S and Colombini J) independently reviewed the literature search results and selected relevant studies. The full-text studies were assessed by the two authors to determine whether the inclusion criteria were met<sup>[16]</sup>.

### Risk of bias

The quality of each study was defined on the basis of the following criteria: (1) selection of patients and controls; (2) methods used to diagnose *H. pylori* infection; (3) diagnostic method of respiratory disease; (4) type of statistical analyses performed; and (5) adjustment for confounding factors. Data abstraction and an estimate of the quality were performed independently by all the authors, who compared the results and then reached a consensus. Assessment was not blind to names and origins of the authors or publications.

A meta-analysis has been performed of the studies in which the percentage of *H. pylori* infection in the asthma population and in the control population was made explicit.

### Statistical analysis

When heterogeneity was present the random effects model was preferred to the fixed effects model. Cochran's

**Table 1 Association between *Helicobacter pylori* infection and Asthma in paediatric population**

Ref.	Method for assessing <i>H. pylori</i> infection	Association	No. of asthmatic/ No. of control	Age	Quality
Annagür et al <sup>[17]</sup>	Serological	Seropositivity was similar in acute exacerbations and stable asthmatics	79/36	5-15	3/5
Zevit et al <sup>[18]</sup>	<sup>13</sup> C-urea breath test	Inverse association between <i>H. pylori</i> and pediatric asthma	578/6381	5-18	5/5
Khamechian et al <sup>[19]</sup>	Biopsy samples	Inverse association between <i>H. pylori</i> and pediatric asthma	36/264	5-18	4/5
Karimi et al <sup>[20]</sup>	<sup>13</sup> C-urea breath test	Similar prevalence in cases and controls	98/98	< 18	2/5
den Hollander et al <sup>[4]</sup>	Serological	Positive association between <i>H. pylori</i> CagA- and pediatric asthma	3062/0	6	3/5

*H. pylori*: *Helicobacter pylori*; CagA: Cytotoxin-associated gene A.

Q was used to test the heterogeneity and a *P* value < 0.1 was used as a cut-off for significance.

The results of the different studies, with 95%CI, and the overall effect with 95%CI, were illustrated in a forest plot graph; the pooled effects have been represented using a diamond.

A Freeman-Tukey transformation was used to calculate the weighted summary "proportion". The Mantel-Haenszel method was used for calculating the weighted pooled "relative risk". Statistical analyses were conducted using Med Calc<sup>®</sup> version 14.8.1 software. The statistical review of the study was performed by a biomedical statistician.

## RESULTS

### Study selection

The search identified 169 publications. We read the abstracts of all articles and selected the 14 original papers where the inclusion criteria were met.

### Epidemiology of the association

**Pediatric population:** Five studies included children with diagnosed asthma (Table 1) and in one study was described children with wheezing but not with a clear diagnosis of asthma: (1) in a monocentric, sample size: 115 participants (79 cases), follow-up: 24 mo, case-control study (quality: 3/5) on a pediatric population, the authors found no positive correlation between IgM and IgG antibodies to *H. pylori* and acute exacerbation or stable asthma (*P* = 0.494 and *P* = 0.227 respectively)<sup>[17]</sup>, (2) in a monocentric, sample size: 6959 participants (578 cases), follow-up: 24 mo, observational study, performed using the <sup>13</sup>C-urea breath test (UBT) (quality: 5/5), an inverse association between *H. pylori* and pediatric asthma was found (OR = 0.79, 95%CI: 0.66-0.94). In this case, a diagnosis was searched in the medical records, thus minimizing familial biases<sup>[18]</sup>; (3) in a monocentric<sup>[19]</sup>, sample size: 300 participants (38 cases), observational study, performed using biopsy samples (quality: 4/5), an inverse association between *H. pylori* and pediatric asthma was demonstrated (*P* < 0.005).

These results were not confirmed by two monocentric studies: (4) an Iranian study<sup>[20]</sup>, sample size: 196 participants, follow-up: 13 mo, cross-sectional study (quality: 2/5) performed in 98 asthmatic Iranian children, that found a similar *H. pylori* prevalence in cases and con-

trols; and (5) an European study<sup>[4]</sup>, sample size: 3797, prospective (quality: 3/5) performed in 3062 children, was found an association between *H. pylori* and risk of asthma (OR = 1.75, 95%CI: 1.07-2.87); children infected by CagA- *H. pylori* strain had an increased risk of asthma (OR = 2.11, 95%CI: 1.23-3.60), while those affected by a CagA-positive strains were not (OR = 0.94, 95%CI: 0.32-2.79).

Moreover, a lower *H. pylori* infection rate in children with wheezing was found in Dutch children who participated in the allergy cohort study<sup>[21]</sup>.

**Adult population:** Nine selected studies included adults (Table 2). All were conducted using serology to demonstrate *H. pylori* infection.

Two studies: (1) one performed in Scotland<sup>[3]</sup> (monocentric, sample size: 219 participants, 19 cases), follow-up: 360 mo, survey study) (quality: 3/5); (2) another in Hong Kong<sup>[22]</sup> (monocentric, sample size: 187 participants (90 cases), follow-up: 12 mo, observational study) (quality: 2/5), indicated that exposures to *H. pylori* was not linked with the development of asthma in adulthood; (3) in a Japanese group of hospitalized patients, Jun et al<sup>[14]</sup> (monocentric, sample size: 94 participants, 46 cases, follow-up: 13 mo, case-control study) (quality: 2/5) did not find difference in anti-*H. pylori* IgG seropositivity and in CagA IgG seropositivity between asthmatics and controls (socioeconomically-matched); (4) Chen et al<sup>[23]</sup> (follow-up: 72 mo, survey study) (quality: 3/5) included 7663 participants in which information on demographics and medical history of asthma was collected using in-person interviews and valid serologic testing for *H. pylori*. In patients infected with *H. pylori*-CagA<sup>+</sup> strains the prevalence of asthma were lower compared to uninfected subjects. Colonization by *H. pylori*-CagA<sup>+</sup> strains was inversely related to having had asthma only in patients with an age of 42 year of more younger and was also find an inverse association between childhood asthma and CagA<sup>+</sup> status; (5) similar results were found by the same authors in a following study<sup>[24]</sup> (sample size: 7412 participants, 946 cases, survey study) (quality: 3/5). They analyzed several subclasses of ages and included only subjects in the younger subclass: *H. pylori* infection seemed to be a protective factor against current or past asthma (OR = 0.49, 95%CI: 0.3-0.8); (6) another group (monocentric,

**Table 2 Association between *Helicobacter pylori* infection and Asthma in adult population**

Ref.	Method for assessing <i>H. pylori</i> infection	Association	No. of asthmatic/ No. of control	Age	Quality
Bodner <i>et al</i> <sup>[3]</sup>	Serological	Seropositivity was similar in cases and controls	19/190	39-45	3/5
Tsang <i>et al</i> <sup>[22]</sup>	Serological	Seropositivity was similar in cases and controls	90/97	42.6 ± 16	2/5
Jun <i>et al</i> <sup>[14]</sup>	Serological	Seropositivity was similar in cases and controls (also for CagA)	46/48	51.2 ± 12.4	2/5
Chen <i>et al</i> <sup>[23]</sup>	Serological	<i>H. pylori</i> <sup>+</sup> CagA <sup>+</sup> were less likely to have ever been diagnosed as having asthma	525/7058	Adults	3/5
Chen <i>et al</i> <sup>[24]</sup>	Serological	Statistical significance only in age 3-13 yr	946/6466	≥ 3	3/5
Reibma <i>et al</i> <sup>[25]</sup>	Serological	<i>H. pylori</i> <sup>+</sup> CagA <sup>+</sup> were less likely to have ever been diagnosed as having asthma	318/208	18-64	3/5
Shiotani <i>et al</i> <sup>[26]</sup>	Serological	Seropositivity was similar in cases and controls	6/771	New university students	2/3
Fullerton <i>et al</i> <sup>[27]</sup>	Serological	Seropositivity was similar in cases and controls	62/151	44.6 ± 13.5	3/5
Lim <i>et al</i> <sup>[28]</sup>	Serological	Statistical significance only in age < 40 yr	359/14673	18-91	3/5

*H. pylori*: *Helicobacter pylori*; CagA: Cytotoxin-associated gene A.

sample size: 526 participants, 318 cases, case-control study) (quality: 3/5) reported findings supporting data on the inverse association<sup>[25]</sup>. Only after adjustment for socio-economic status there was an inverse association between asthma and CagA<sup>+</sup> status (OR = 0.63, 95%CI: 0.41-0.98); (7) in a Japanese study<sup>[26]</sup> monocentric, sample size: 777 participants (6 cases), follow-up: 12 mo, observational cross-sectional study (quality: 2/5), newly enrolled university students with bronchial asthma, 24-year-old or younger, were all *H. pylori* negative; (8) no association between *H. pylori* seropositivity and asthma was found in an United Kingdom monocentric, sample size: 213 participants (62 cases), follow-up: 108 mo, cross-sectional study (quality 3/5) (OR = 1.09, 95%CI: 0.77-1.54)<sup>[27]</sup>; and (9) a monocentric, retrospective Korean study<sup>[28]</sup> (quality 3/5) enrolled subjects aged ≥ 18 years who had health surveillance checkups, including the serum anti-*H. pylori* IgG level. This large scale study demonstrated an inverse relationship between *H. pylori* infection and asthma among adults < 40 years old.

### Meta-analysis

In seven of the fourteen studies<sup>[3,14,17,19,20,24,25]</sup> has been reported both the prevalence of *H. pylori* infection in the asthma population and in the control population. There is heterogeneity between the studies (Cohran's Q = 0.02). The prevalence of *H. pylori* infection in the asthma population resulted 33.6% (518 of 1542), while the prevalence of *H. pylori* infection in the control population resulted 37.6% (2746 of 7310) (relative risk of *H. pylori* infection in the asthma population = 0.87, 95%CI: 0.72-1.05, *P* = 0.15, random effects model), difference not statistically significant. The forest plot is illustrated in Figure 1.

## DISCUSSION

### Potential pathogenetic mechanisms

In animal models, experimental infection with *H. pylori* during the neonatal period induced a protective effect against asthma<sup>[29]</sup>.

In case of gastric colonization by *H. pylori*-CagA<sup>+</sup> strains, mucosal Tregs are higher in number, and mucosal levels of the immunomodulatory cytokine IL-10 may be higher compared to the case of colonization by *H. pylori*-CagA<sup>-</sup> strains<sup>[30-38]</sup>.

Gastroesophageal reflux disease (GERD) could be a trigger to asthma symptoms<sup>[39]</sup>. Microaspiration of the gastric contents into the lung damages the bronchial mucosa, which results in mucosal inflammation and bronchial hyper-responsiveness. Diffuse gastric atrophy, a consequence of *H. pylori* infection, especially CagA<sup>+</sup> strains, is a protective factor against GERD<sup>[40]</sup>. Part of the lower prevalence of asthma in people affected by *H. pylori* infection could be justified by the lower prevalence of GERD in this patients and not by an immunologic shift to an Th2 phenotype.

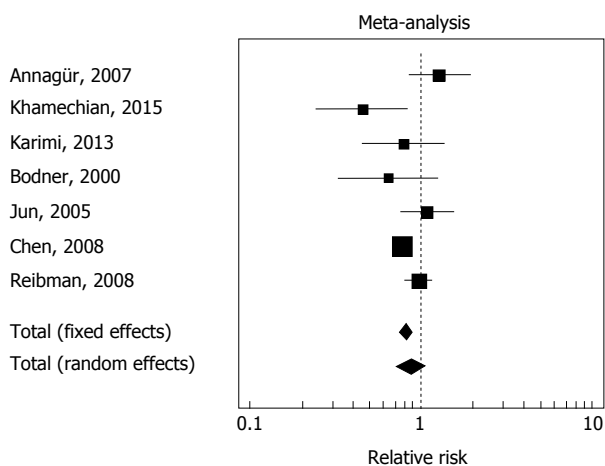
Considering the available studies on the potential association between *H. pylori* and asthma, sources of heterogeneity can be identified.

Focusing on sample size, negative results obtained in the various studies, when a limited number of patients was examined, must be considered with caution for the possible risk of statistical β error<sup>[41]</sup>. Another critical issue, on this matter, is represented by the fact that included populations are heterogeneous and this may have important repercussions: The differences observed could be due to an inadequate selection of the control group.

Methods for assessing *H. pylori* infection vary in sensitivity and specificity, which may result in misclassification of exposure to the bacteria. Focusing on methodologies employed, some may indicate a previous contact with the microorganism (serological tests) while others an infection under way (UBT, histology). Both kinds are useful when studying long-term processes in which the microorganism could have been the *primum movens* and its disappearance does not change the illness story. On the contrary, if its role in an acute attack is studied, it is more appropriate to search for the active infection.

In summary, in our meta-analysis a sample of 8852





**Figure 1** Relative risk of *Helicobacter pylori* population in the asthma population.

subjects are included and the prevalence of *H. pylori* infection in the asthma population resulted not statistically significant lower than in control population (relative risk = 0.87,  $P = 0.15$ ).

The potential association between *H. pylori* infection and the reduction of risk of asthma development is an important issue in medicine, since it could influence the choice of bacterial treatment. The presence of *H. pylori* might be beneficial in childhood (decreasing risk of allergic diseases) but more deleterious later in life (increasing the risk of gastric adenocarcinoma).

Further prospective longitudinal studies with UBT for diagnosis of *H. pylori* are needed to prove a link between the lower prevalence of *H. pylori* infection and higher incidence of asthma.

## COMMENTS

### Background

Asthma is a common respiratory disease, manifested by inflammatory and obstructive processes, secondary to multiple stimuli. The etiology of asthma remains largely unclear. *Helicobacter pylori* (*H. pylori*) infection is a chronic one, generally acquired during childhood, and associated with lower socio-economic status.

### Research frontiers

In the latest two decades, several studies have reported potential links between chronic *H. pylori* infection and a variety of extragastric manifestations. These include ischemic heart disease, liver diseases, skin diseases, rheumatic diseases, blood disorders, and others.

### Innovations and breakthroughs

The present review attempts to highlight the data regarding a potential correlation between *H. pylori* infection and asthma.

### Applications

The potential association between *H. pylori* infection and the reduction of risk of asthma development is an important issue in medicine, since it could influence the choice of bacterial treatment.

### Peer-review

This is a well written meta-analysis paper concerning the elucidation of a potential involvement of *H. pylori* infection in the pathogenesis of asthma based on analysis

of 14 papers selected from 169 publications.

## REFERENCES

- Bell MC, Busse WW. Severe asthma: an expanding and mounting clinical challenge. *J Allergy Clin Immunol Pract* 2013; **1**: 110-121; quiz 122 [PMID: 24565450 DOI: 10.1016/j.jaip.2013.01.005]
- Omran M, Russell G. Continuing increase in respiratory symptoms and atopy in Aberdeen schoolchildren. *BMJ* 1996; **312**: 34 [PMID: 8555858 DOI: 10.1136/bmj.312.7022.34]
- Bodner C, Anderson WJ, Reid TS, Godden DJ. Childhood exposure to infection and risk of adult onset wheeze and atopy. *Thorax* 2000; **55**: 383-387 [PMID: 10770819 DOI: 10.1136/thorax.55.5.383]
- den Hollander WJ, Sonnenschein-van der Voort AM, Holster IL, de Jongste JC, Jaddoe VW, Hofman A, Perez-Perez GI, Moll HA, Blaser MJ, Duijts L, Kuipers EJ. *Helicobacter pylori* in children with asthmatic conditions at school age, and their mothers. *Aliment Pharmacol Ther* 2016: Epub ahead of print [PMID: 26932510 DOI: 10.1111/apt.13572]
- Matricardi PM, Rosmini F, Ferrigno L, Nisini R, Rapicetta M, Chionne P, Stroffolini T, Pasquini P, D'Amelio R. Cross sectional retrospective study of prevalence of atopy among Italian military students with antibodies against hepatitis A virus. *BMJ* 1997; **314**: 999-1003 [PMID: 9112843 DOI: 10.1136/bmj.314.7086.999]
- Romagnani S. Human TH1 and TH2 subsets: regulation of differentiation and role in protection and immunopathology. *Int Arch Allergy Immunol* 1992; **98**: 279-285 [PMID: 1422257 DOI: 10.1159/000236199]
- Strachan DP. Hay fever, hygiene, and household size. *BMJ* 1989; **299**: 1259-1260 [PMID: 2513902]
- Strachan DP. Lifestyle and atopy. *Lancet* 1999; **353**: 1457-1458 [PMID: 10232306]
- Roussos A, Philippou N, Gourgoulis KI. *Helicobacter pylori* infection and respiratory diseases: a review. *World J Gastroenterol* 2003; **9**: 5-8 [PMID: 12508341 DOI: 10.3748/wjg.v9.i1.5]
- Thomas JE, Dale A, Harding M, Coward WA, Cole TJ, Weaver LT. *Helicobacter pylori* colonization in early life. *Pediatr Res* 1999; **45**: 218-223 [PMID: 10022593 DOI: 10.1203/00006450-199902000-00010]
- Durazzo M, Rosina F, Premoli A, Morello E, Fagoonee S, Innarella R, Solerio E, Pellicano R, Rizzetto M. Lack of association between seroprevalence of *Helicobacter pylori* infection and primary biliary cirrhosis. *World J Gastroenterol* 2004; **10**: 3179-3181 [PMID: 15457568 DOI: 10.3748/wjg.v10.i21.3179]
- Marietti M, Gasbarrini A, Saracco G, Pellicano R. *Helicobacter pylori* infection and diabetes mellitus: the 2013 state of art. *Panminerva Med* 2013; **55**: 277-281 [PMID: 24088801]
- Pellicano R, Franceschi F, Saracco G, Fagoonee S, Roccarina D, Gasbarrini A. *Helicobacters* and extragastric diseases. *Helicobacter* 2009; **14** Suppl 1: 58-68 [PMID: 19712170 DOI: 10.1111/j.1523-5378.2009.00699.x]
- Jun ZJ, Lei Y, Shimizu Y, Dobashi K, Mori M. *Helicobacter pylori* seroprevalence in patients with mild asthma. *Tohoku J Exp Med* 2005; **207**: 287-291 [PMID: 16272799 DOI: 10.1620/tjem.207.287]
- Liberati A, Altman DG, Tetzlaff J, Mulrow C, Gotzsche PC, Ioannidis JP, Clarke M, Devereaux PJ, Kleijnen J, Moher D. The PRISMA statement for reporting systematic reviews and meta-analyses of studies that evaluate health care interventions: explanation and elaboration. *PLoS Med* 2009; **6**: e1000100 [PMID: 19621070 DOI: 10.1371/journal.pmed.1000100]
- Miao XP, Li JS, Ouyang Q, Hu RW, Zhang Y, Li HY. Tolerability of selective cyclooxygenase 2 inhibitors used for the treatment of rheumatological manifestations of inflammatory bowel disease. *Cochrane Database Syst Rev* 2014; **10**: CD007744 [PMID: 25340915 DOI: 10.1002/14651858.CD007744.pub2]
- Annagür A, Kendirli SG, Yilmaz M, Altintas DU, Inal A. Is there any relationship between asthma and asthma attack in children and atypical bacterial infections; Chlamydia pneumoniae, Mycoplasma pneumoniae and *Helicobacter pylori*. *J Trop Pediatr* 2007; **53**: 313-318 [PMID: 17535826 DOI: 10.1093/tropej/fmm040]

- 18 **Zevit N**, Balicer RD, Cohen HA, Karsh D, Niv Y, Shamir R. Inverse association between *Helicobacter pylori* and pediatric asthma in a high-prevalence population. *Helicobacter* 2012; **17**: 30-35 [PMID: 22221613 DOI: 10.1111/j.1523-5378.2011.00895.x]
- 19 **Khamechian T**, Movahedian AH, Ebrahimi Eskandari G, Heidarzadeh Arani M, Mohammadi A. Evaluation of the Correlation Between Childhood Asthma and *Helicobacter pylori* in Kashan. *Jundishapur J Microbiol* 2015; **8**: e17842 [PMID: 26310565 DOI: 10.5812/jjm.8(6)2015.17842]
- 20 **Karimi A**, Fakhimi-Derakhshan K, Imanzadeh F, Rezaei M, Cavoshzadeh Z, Maham S. *Helicobacter pylori* infection and pediatric asthma. *Iran J Microbiol* 2013; **5**: 132-135 [PMID: 23825730]
- 21 **Holster IL**, Vila AM, Caudri D, den Hoed CM, Perez-Perez GI, Blaser MJ, de Jongste JC, Kuipers EJ. The impact of *Helicobacter pylori* on atopic disorders in childhood. *Helicobacter* 2012; **17**: 232-237 [PMID: 22515362 DOI: 10.1111/j.1523-5378.2012.00934.x]
- 22 **Tsang KW**, Lam WK, Chan KN, Hu W, Wu A, Kwok E, Zheng L, Wong BC, Lam SK. *Helicobacter pylori* sero-prevalence in asthma. *Respir Med* 2000; **94**: 756-759 [PMID: 10955750 DOI: 10.1053/rmed.2000.0817]
- 23 **Chen Y**, Blaser MJ. Inverse associations of *Helicobacter pylori* with asthma and allergy. *Arch Intern Med* 2007; **167**: 821-827 [PMID: 17452546 DOI: 10.1001/archinte.167.8.821]
- 24 **Chen Y**, Blaser MJ. *Helicobacter pylori* colonization is inversely associated with childhood asthma. *J Infect Dis* 2008; **198**: 553-560 [PMID: 18598192 DOI: 10.1086/590158]
- 25 **Reibman J**, Marmor M, Filner J, Fernandez-Beros ME, Rogers L, Perez-Perez GI, Blaser MJ. Asthma is inversely associated with *Helicobacter pylori* status in an urban population. *PLoS One* 2008; **3**: e4060 [PMID: 19112508 DOI: 10.1371/journal.pone.0004060]
- 26 **Shiotani A**, Miyaniishi T, Kamada T, Haruma K. *Helicobacter pylori* infection and allergic diseases: epidemiological study in Japanese university students. *J Gastroenterol Hepatol* 2008; **23**: e29-e33 [PMID: 17725593 DOI: 10.1111/j.1440-1746.2007.05107.x]
- 27 **Fullerton D**, Britton JR, Lewis SA, Pavord ID, McKeever TM, Fogarty AW. *Helicobacter pylori* and lung function, asthma, atopy and allergic disease--a population-based cross-sectional study in adults. *Int J Epidemiol* 2009; **38**: 419-426 [PMID: 19109248 DOI: 10.1093/ije/dyn348]
- 28 **Lim JH**, Kim N, Lim SH, Kwon JW, Shin CM, Chang YS, Kim JS, Jung HC, Cho SH. Inverse Relationship Between *Helicobacter Pylori* Infection and Asthma Among Adults Younger than 40 Years: A Cross-Sectional Study. *Medicine* (Baltimore) 2016; **95**: e2609 [PMID: 26937899 DOI: 10.1097/MD.0000000000002609]
- 29 **Arnold IC**, Dehzad N, Reuter S, Martin H, Becher B, Taube C, Müller A. *Helicobacter pylori* infection prevents allergic asthma in mouse models through the induction of regulatory T cells. *J Clin Invest* 2011; **121**: 3088-3093 [PMID: 21737881 DOI: 10.1172/JCI45041]
- 30 **Gasbarrini A**, Franceschi F, Gasbarrini G, Pola P. Extraintestinal pathology associated with *Helicobacter* infection. *Eur J Gastroenterol Hepatol* 1997; **9**: 231-233 [PMID: 9096420 DOI: 10.1097/00042737-199703000-00001]
- 31 **Codolo G**, Mazzi P, Amedei A, Del Prete G, Berton G, D'Elios MM, de Bernard M. The neutrophil-activating protein of *Helicobacter pylori* down-modulates Th2 inflammation in ovalbumin-induced allergic asthma. *Cell Microbiol* 2008; **10**: 2355-2363 [PMID: 18671823 DOI: 10.1111/j.1462-5822.2008.01217.x]
- 32 **Amedei A**, Cappon A, Codolo G, Cabrelle A, Polenghi A, Benagiano M, Tasca E, Azzurri A, D'Elios MM, Del Prete G, de Bernard M. The neutrophil-activating protein of *Helicobacter pylori* promotes Th1 immune responses. *J Clin Invest* 2006; **116**: 1092-1101 [PMID: 16543949 DOI: 10.1172/JCI27177]
- 33 **D'Elios MM**, Amedei A, Cappon A, Del Prete G, de Bernard M. The neutrophil-activating protein of *Helicobacter pylori* (HP-NAP) as an immune modulating agent. *FEMS Immunol Med Microbiol* 2007; **50**: 157-164 [PMID: 17521355 DOI: 10.1111/j.1574-695X.2007.00258.x]
- 34 **Oppmann B**, Lesley R, Blom B, Timans JC, Xu Y, Hunte B, Vega F, Yu N, Wang J, Singh K, Zonin F, Vaisberg E, Churakova T, Liu M, Gorman D, Wagner J, Zurawski S, Liu Y, Abrams JS, Moore KW, Rennick D, de Waal-Malefyt R, Hannum C, Bazan JF, Kastelein RA. Novel p19 protein engages IL-12p40 to form a cytokine, IL-23, with biological activities similar as well as distinct from IL-12. *Immunity* 2000; **13**: 715-725 [PMID: 11114383]
- 35 **Robinson K**, Kenefeck R, Pidgeon EL, Shakib S, Patel S, Polson RJ, Zaitoun AM, Atherton JC. *Helicobacter pylori*-induced peptic ulcer disease is associated with inadequate regulatory T cell responses. *Gut* 2008; **57**: 1375-1385 [PMID: 18467372 DOI: 10.1136/gut.2007.137539]
- 36 **Oertli M**, Müller A. *Helicobacter pylori* targets dendritic cells to induce immune tolerance, promote persistence and confer protection against allergic asthma. *Gut Microbes* 2012; **3**: 566-571 [PMID: 22895083 DOI: 10.4161/gmic.21750]
- 37 **Maldonado RA**, von Andrian UH. How tolerogenic dendritic cells induce regulatory T cells. *Adv Immunol* 2010; **108**: 111-165 [PMID: 21056730 DOI: 10.1016/B978-0-12-380995-7.00004-5]
- 38 **Harris PR**, Wright SW, Serrano C, Riera F, Duarte I, Torres J, Peña A, Rollán A, Viviani P, Guiraldes E, Schmitz JM, Lorenz RG, Novak L, Smythies LE, Smith PD. *Helicobacter pylori* gastritis in children is associated with a regulatory T-cell response. *Gastroenterology* 2008; **134**: 491-499 [PMID: 18242215 DOI: 10.1053/j.gastro.2007.11.006]
- 39 **Kahrilas PJ**, Smith JA, Diepinigaitis PV. A causal relationship between cough and gastroesophageal reflux disease (GERD) has been established: a pro/con debate. *Lung* 2014; **192**: 39-46 [PMID: 24221340 DOI: 10.1007/s00408-013-9528-7]
- 40 **Vicari JJ**, Peek RM, Falk GW, Goldblum JR, Easley KA, Schnell J, Perez-Perez GI, Halter SA, Rice TW, Blaser MJ, Richter JE. The seroprevalence of *cagA*-positive *Helicobacter pylori* strains in the spectrum of gastroesophageal reflux disease. *Gastroenterology* 1998; **115**: 50-57 [PMID: 9649458 DOI: 10.1016/S0016-5085(98)70364-6]
- 41 **Gambino SR**, Galen RS. "Alpha" and "beta" errors. *Clin Chem* 1983; **29**: 1319 [PMID: 6851124]

**P- Reviewer:** Abadi ATB, Nakajima N, Slomiany BL, Tosetti C, Tovey FI, Vorobjova T **S- Editor:** Ji FF  
**L- Editor:** A **E- Editor:** Li D





Published by **Baishideng Publishing Group Inc**

8226 Regency Drive, Pleasanton, CA 94588, USA

Telephone: +1-925-223-8242

Fax: +1-925-223-8243

E-mail: [bpgoffice@wjgnet.com](mailto:bpgoffice@wjgnet.com)

Help Desk: <http://www.wjgnet.com/esps/helpdesk.aspx>

<http://www.wjgnet.com>

