

AperTO - Archivio Istituzionale Open Access dell'Università di Torino

**A novel polymorphism in the oxytocin receptor encoding gene (OXTR) affects milk fatty acid composition in Italian Mediterranean river buffalo**

**This is the author's manuscript**

*Original Citation:*

*Availability:*

This version is available <http://hdl.handle.net/2318/1637923> since 2018-10-02T12:40:53Z

*Published version:*

DOI:10.1017/S0022029917000127

*Terms of use:*

Open Access

Anyone can freely access the full text of works made available as "Open Access". Works made available under a Creative Commons license can be used according to the terms and conditions of said license. Use of all other works requires consent of the right holder (author or publisher) if not exempted from copyright protection by the applicable law.

(Article begins on next page)

This is the author's final version of the contribution published as:

Cosenza, Gianfranco; Macciotta, Nicolò P P; Nudda, Anna; Coletta, Angelo; Ramunno, Luigi; Pauciullo, Alfredo. A novel polymorphism in the oxytocin receptor encoding gene (OXTR) affects milk fatty acid composition in Italian Mediterranean river buffalo. *THE JOURNAL OF DAIRY RESEARCH*. 84 (2) pp: 170-180.  
DOI: 10.1017/S0022029917000127

The publisher's version is available at:

<https://www.cambridge.org/core/services/aop-cambridge-core/content/view/S0022029917000127>

When citing, please refer to the published version.

Link to this full text:

<http://hdl.handle.net/>

# **A novel polymorphism in the Oxytocin receptor encoding gene (*OXTR*) affects milk fatty acid composition in Italian Mediterranean river buffalo**

Gianfranco Cosenza<sup>1\*</sup>, Nicolò PP Macciotta<sup>2</sup>, Anna Nudda<sup>2</sup>, Angelo Coletta<sup>3</sup>, Luigi Ramunno<sup>1</sup> and Alfredo Pauciullo<sup>4</sup>

1 Department of Agricultural Sciences, University of Naples 'Federico II', Portici (NA), Italy

2 Department of Agricultural Sciences, University of Sassari, Sassari, Italy

3 Italian National Association of Buffalo Breeders (ANASB), Località Centurano, Caserta, Italy

4 Department of Agricultural, Forest and Food Science, University of Torino, Grugliasco (TO), Italy

\*For correspondence; e-mail: [giacosen@unina.it](mailto:giacosen@unina.it)

## **Summary**

The Oxytocin Receptor, also known as *OXTR*, is a protein which functions as receptor for the hormone and neurotransmitter oxytocin and the complex oxytocin-oxytocin receptor plays an important role in the uterus during calving. A characterization of the river buffalo *OXTR* gene, amino acid sequences and phylogenetic analysis were presented. The DNA regions of the *OXTR* gene spanning exons 1, 2 and 3 of ten Mediterranean river buffalo DNA samples were analyzed and found 7 single nucleotide polymorphisms. We focused on the g.129C>T SNP detected in exon 3 and responsible for the amino acid replacement CGC<sup>Arg</sup>>TGC<sup>Cys</sup> in position 353. The relative frequency of T allele was of 0.257. An association study between this detected polymorphism and milk fatty acids composition in Italian Mediterranean river buffalo was carried out. The fatty acid

composition traits, fatty acid classes and fat percentage of 306 individual milk samples were determined. Associations between *OXTR* g.129C>T genotype and milk fatty acids composition were tested using a mixed linear model. The *OXTR* CC genotype was found significantly associated with higher contents of Odd branched-chain fatty acids (OBCFA) ( $P < 0.0006$ ), polyunsaturated FA (PUFA n 3 and n 6) ( $P < 0.0032$  and  $P < 0.0006$ , respectively), Stearic acid (C18) ( $P < 0.02$ ) and lower level of Palmitic acid (C16) ( $P < 0.02$ ). The results of this study suggest that the *OXTR* CC genotype animals might be useful in selection toward the improvement of milk fatty acid composition.

**Keywords:** Mediterranean river buffalo, *OXTR*, polymorphism, milk fatty acid, association

## Introduction

Associations between genetic polymorphisms and dairy traits are of great interest in Buffalo for explaining the mechanisms underlying their genetic variation and for providing useful tools for improving the accuracy and efficiency of traditional selection methods. Among dairy traits, of particular interest is the fatty acid (FA) composition of milk fat. The evaluation of the FA composition in milk from buffalo cows is of extreme importance to human health since high intakes of specific fatty acids such as C 18:2 cis 9- trans - 11 and C18: 1 trans-11 (Vaccenic) can help in the diseases prevention and help in maintaining and regulating of metabolism in humans. Variations in levels of unsaturated FA of milk fat of buffaloes are similar to those found in dairy cows of the partum to eighth week of lactation. However, higher concentrations of CLA in milk of buffalo cows bring greater benefits to human health due to higher amounts of fat in milk of these animals (Verdurico et al. 2012). Candidate genes for fatty acid binding, transport, and metabolism in relation to production traits include *FASN* (fatty acid synthase), *DGATI* (diacylglycerol O-acyltransferase 1), *SCD* (stearoyl CoA desaturase), *ACACA* (acetyl-CoA carboxylase alpha), *BLG*

(beta-lactoglobulin). Significant associations between polymorphisms in some of these genes and milk production or milk fat related traits have been reported in cattle (Zhang et al. 2009, Komisarek et al. 2011, Mao et al. 2012, Matsumoto et al. 2012, Molee et al. 2015), goat (Badaoui et al. 2007, Dixit et al. 2015), sheep (Scatà et al. 2009, Moioli et al. 2013) and buffalo (Vohra et al. 2006, Pauciullo et al. 2012, Cardoso et al. 2015, de Freitas et al. 2016).

A possible candidate for milk fat composition could be also the Oxytocin receptor encoding gene (*OXTR*). It acts as a receptor for oxytocin and the oxytocin-oxytocin receptor complex plays an important role in the uterus during calving. The *OXTR* belongs to the G protein-coupled receptor (GPCR) family and contains seven transmembrane (TM) domains, an extra-cellular N-terminus and an intracellular C-terminus, which are believed to be involved in receptor regulation (Bathgate et al. 1995). The conserved TM domains are involved in the activation and signal transduction of the G protein (Gimpl & Fahrenholz 2001), whereas the masking of G protein binding sites has been associated with changes in the relative orientation of TM domains 3 and 6 (Barberis et al. 1998). The *OXTR* is differentially expressed in various tissues; it is up-regulated in the cows' uterus during estrus and at the end of pregnancy, and it also increases in the mammary gland and during lactation (Gimpl and Fahrenholz 2001). *OXTR* gene maps on BTA22 where nine QTL for FA composition of meat have been found in a Charolais X Holstein cross population (Gutiérrez-Gil et al., 2010). Five out of 9 have been found to influence the content of palmitic (C16:0), palmitoleic (C16:1), oleic (c9 C18:1) and conjugated linoleic (CLA) fatty acids and the sum of total fatty acid (SUMWFA) index. The other 4 QTL identified on this chromosome affected the stearic acid (C18:0) content, the SFA index and the P:S ratio.

To date, the *OXTR* encoding sequences have been reported for mice (GenBank Acc. No. D86599), human (Acc. No. AY389507), swine (Acc. No. NM\_214027), sheep (Acc. No. NM\_001009752), cattle (Acc. No. AF101724) and water buffalo (Acc. No. FJ917398; XM\_006070767). Cattle and buffalo *OXTR* cDNA contains 1176 nucleotides, encoding for 391

amino acids with a molecular weight of 43 kDa and an isoelectric point of 9.253 (Bathgate et al. 1995; Fleming et al. 2006; Arunmozhi et al. 2014).

In human, the gene spans 17 kb and contains 3 introns and 4 exons. The genomic DNA for *OXTR* can be mainly divided into three segments. The segment 1 contains the 5' non-coding region. The segment 2 starts upstream the ATG initiation codon and spans downstream encoding for most part of the receptor protein including the sixth transmembrane domain of the receptor. The segment 3, instead, contains the sequence encoding for the seventh transmembrane domain of the receptor, the C-terminal region and the entire 3' noncoding region, including multiple polyadenylation signals. There are two introns between the three segments. The largest intron (about 12 kb in human and rat), interrupts the coding region between transmembrane domain 6 and 7. Compared to human, the structural organization of the *OXTR* gene seems to be conserved also in the bovine species apart from only one exon upstream of that there is the ATG initiation codon (Gimpl and Fahrenholz 2001; Feng 2000).

Excluding these studies, to our knowledge, no information on genetic variability has been reported so far at the *OXTR locus* and, consequently, no association study with milk production traits has been carried out. This study aims to explore the genetic variability at Italian Mediterranean river buffalo *OXTR locus* and test possible associations between detected polymorphisms and milk fatty acids composition finalized to a genetic improvement of productive efficiency of the species.

## **Materials and methods**

### *Sample collection*

Individual blood and milk samples were collected from 306 Italian river buffaloes belonging to 14 farms, located in Salerno and Caserta province (Southern Italy), with a similar feeding management, based on 60% forage (silage and hay) and 40% concentrates. Sampling was carried out in

collaboration with the Italian National Association of Buffalo Breeders (ANASB). Milk samples were collected over the whole lactation.

Fatty acid composition of milk samples was determined by gas chromatography (GC Turbo 3400 CX, Varian Inc., Palo Alto, CA, USA). Milk fat extraction was performed according to the Röse-Gottlieb method (AOAC, 1990) modified as described by Nudda et al. (2015). The fatty acid methyl esters (FAME) were prepared with a base-catalyzed trans - esterification according to the International Dairy Federation standard procedure (1999). The FAME was separated in a capillary column (CP-select CB for Fame; 100 m×0.32 mm i.d., 0.25- $\mu$ m film thickness, Varian Inc., Palo Alto, CA). The injector and FID temperatures were 255°C. The programmed temperature was 75°C for 1 min. It was then raised to 165°C at a rate of 8°C/min, maintained at 165°C for 35 min, increased to 210°C at a rate of 5.5°C/min, and finally increased to 240°C at a rate of 15°C/min. The split ratio was 1:100 with He at a pressure of 37 psi as the carrier gas. The fatty acids were identified by comparing retention times of peaks with those of methyl ester standards as reported by Nudda et al. 2011. In addition published isomeric profile were used to identify trans C18:1 and CLA isomers of interest (Griinari et al. 1998; Kramer et al. 2004; respectively).

#### *DNA isolation and PCR amplification conditions*

DNA was isolated from leukocyte, using the procedure described by Goossens & Kan (1981). DNA concentration and OD<sub>260/280</sub> ratio of the samples were measured by the Nanodrop ND-2000C Spectrophotometer (Thermo Scientific).

The DNA regions of the *OXTR* gene spanning exons 1, 2 and 3 of ten individual samples, randomly chosen, were amplified by iCycler (BioRad) using primers designed on the complete bovine genome sequence (EMBL acc. no. NC\_007320.5) (Table 1).

PCR amplifications were performed according to the following chemical conditions: 100 ng of genomic DNA, 50 mM KCl, 10 mM Tris-HCl (pH 9.0), 0.1% Triton X-100, 3 mM MgCl<sub>2</sub>, 200 nmol of each primer, dNTPs each at 400  $\mu$ M, 2.5 U Taq DNA Polymerase (Promega, Madison,

WI), and 0.04% BSA in a final volume of 25 µl reaction mix. The thermal condition for the amplification of the exon 1 and 3 consisted of an initial denaturation at 97°C for 2 min, annealing at 62°C for 45 s and extension at 72°C for 2 min, followed by 30 cycles at 94°C for 45 s, 62°C for 45 s and 72°C for 2 min (except for the final extension of 10 min). For the amplification of the DNA region spanning the exon 2, the amplification conditions were the same except for the annealing temperature (67°C).

All PCR products were analysed directly by electrophoresis in 1.5% TBE agarose gel (Bio-Rad, CA, USA) in 0.5X TBE buffer and stained with SYBR<sup>®</sup> green nucleic acid stain (Lonza Rockland, Inc, USA). PCR products were sequenced on both strands at CEINGE - Biotecnologie Avanzate (Naples, Italy).

#### *Bioinformatic and statistical analysis*

Allelic frequencies and Hardy-Weinberg equilibrium ( $\chi^2$  test) were calculated. Homology searches, comparison among nucleotide and amino acid sequences and multiple alignments were accomplished using DNAsis-Pro (Hitachi Software Engineering Co., Japan).

Phylogenetic analysis was performed using the evolutionary distances computed by the maximum composite likelihood method of MEGA 4 software (Tamura et al. 2007). The evolutionary distances were computed using the Poisson correction model and they are in the units of the number of amino acid substitutions per site. A bootstrap analysis based on 1000 iterations was used to evaluate the robustness of the tree. The amino acid sequences for the *OXTR* were obtained from the EMBL sequence database.

Associations between *OXTR* genotype, fatty acid composition traits, fatty acid classes and fat percentage were tested using the following mixed linear model:

$$y_{ijklmn} = \mu + AGE_i + DIM_j + Month_k + SNP_l + HERD_m + e_{ijklmn} \quad [1]$$



where:

- $y_{ijklmn}$  = Fatty acid considered in test;
- $\mu$  = Overall mean;
- $AGE_i$  = fixed effect of the age of the  $i$ th animal at calving expressed in years (6 classes: 1= <4yrs., 2=4 yrs., 3=5 yrs. , 4=6 yrs., 5=7 yrs., 6 = >7 yrs.);
- $DIM_j$  = fixed effect of the  $j$ th stage of lactation (10 levels of 30 days each);
- $Month_k$  = fixed effect of the  $k$ th month of calving (12 levels);
- $SNP_l$  = fixed effect of the  $l$ th SNP genotype;
- $HERD_m$  = Random effect of the  $m$ th herd
- $e_{ijklmn}$  = Random residual

Pairwise comparisons among different levels of fixed effects included in model were performed using a Bonferroni adjusted test.

The average gene substitution effect ( $\alpha$ ) was calculated as simple phenotypic regression upon the number of C alleles at the *OXTR locus* (0, 1, 2) weighted for the frequency of the phenotypes.

The variance component associated to the *OXTR* genotype ( $\sigma^2_{OXTR}$ ) was estimated by running a mixed linear model with the same structure of [1] but with the SNP effect treated as random. Then the contribution of the *OXTR* genotype ( $r^2_{OXTR}$ ) to the total phenotypic variance of the trait considered was calculated as:

$$r^2_{OXTR} = \frac{\sigma^2_{OXTR}}{\sigma^2_{OXTR} + \sigma^2_{HERD} + \sigma^2_e}$$

where ( $\sigma^2_{HERD}$ ) and ( $\sigma^2_e$ ) are herd and residual variance component estimated with model [1], respectively.

## Results and Discussion

### *Gene characterization and polymorphism detection*

The first exon (partial), the entire second exon and the third exon until the stop codon (TGA) of the *OXTR* gene of ten individual samples randomly chosen were amplified and sequenced. The sequences are available in EMBL with the following accession numbers: LT592263, LT592262, LT592264.

The Mediterranean river buffalo *OXTR* gene contains an uninterrupted ORF of 1176 nucleotides, corresponding to a predicted polypeptide length of 391 amino acids similar to those reported in cattle (Bathgate et al. 1995), sheep (Fleming et al. 2006) and Indian water buffalo (Arunmozhi et al. 2014). The predicted molecular weight of the deduced amino acid sequence was 43,169 kDa with an isoelectric point of 9.41. The ORF is characterized by high CG content with an average value of 64.8%.

### *Exon 1*

The DNA sequence spanning the last 631 nucleotides of the exon 1 showed a homology of about 97% with the corresponding bovine sequence (EMBL [AF100633](#)) and 99% with the non-annotated genomic bubaline sequence deposited in GeneBank with the access number [KI418690.1](#) (from nt 1902413 to 1903043), which, therefore, we have identified as putative *OXTR locus*. The comparison of obtained sequences showed a total of 5 polymorphic sites: EMBL no. LT592263 g.230G>T, g.522G>T, g.567C>G, g.577G>C, g.579G>T. Since this exon corresponds to the region 5' UT, such mutations do not affect any triplet coding for the protein. The first SNP falls within a portion of exon 1 that appears to be differentially spliced in the bovine (exon 1a, Bathgate et al. 1995; Telgmann et al. 2003, EMBL [AJ490937.1](#)). The subsequent comparison with the buffalo genomic sequence (EMBL [KI418690.1](#)) allowed to identify a further nucleotide difference:

g.476C>T (Figure 1). The sequence analysis of the informative subjects showed only two haplotypes: a) GGCGG and b) TTCCT.

### *Exon 2*

The DNA region including the second exon of the buffalo *OXTR* gene was sequenced for a total of 1084 bp (EMBL no. LT592262). The nt 157-159 correspond to the triplet ATG coding for the start codon of the translation (Methionine). The entire sequence showed a homology of 99% with the buffalo genome sequence ([KI418690.1](#)), as well as with the corresponding bovine sequence (EMBL [AF100633](#)).

A similar degree of homology was also observed with the partial sequence of the Indian buffalo *OXTR* cDNA (EMBL [FJ917398](#)) and with the partial Italian Mediterranean buffalo cDNA sequence (EMBL [XM\\_006070767.1](#)). In particular, the first comparison showed 6 SNP, three of which are responsible for amino acids changes: GTG<sup>Val</sup>>GCG<sup>Arg</sup>, ATT<sup>Ile</sup>>GTT<sup>Val</sup>, TGG<sup>Trp</sup>>CGG<sup>Arg</sup> in position 60, 209 and 302, respectively. On contrary, only one silent SNP was detected by the latter comparison with the Italian Mediterranean buffalo cDNA (Figure 1). No polymorphism was detected from the sequences alignment of the 10 subjects examined in this study.

### *Exon 3*

The complete coding region (from the first nucleotide to the termination codon, TGA) of the third exon of *OXTR* gene was sequenced for a total of 248 bp (EMBL no. LT592264). The sequence alignment among the 10 investigated animals showed two SNP. The first (g.129C>T) is responsible for the amino acid replacement CGC<sup>Arg</sup>>TGC<sup>Cys</sup> in position 353, whereas the second (g.139C>A<sup>Gly356</sup>) is a conservative mutation.

The following comparison with the sequences available in database showed that, excluding the species phylogenetical distant like cetaceans and *Ailuropoda melanoleuca* (Giant panda), the presence of a cysteine in position 353 does not characterize any other of the 13 mammalian species

compared. However, it is interesting to point out that in primates, pinnipeds, felidae, canidae, chiroptera and talpidae, the thymine represents always the first nucleotide of the triplet, although in all these species it is replaced by TAC which encodes for the amino acid Tyr.

In regard of the conservative polymorphism, it is remarkable to notice that, with the exception of the Indian buffalo that is characterized by the presence of adenine, the other mammals considered in the present study are characterized by the presence of cytosine.

Additional polymorphisms were detected through the comparison of the sequences available in EMBL ([XM\\_006070767](#) and [NW\\_005785401.1](#)) related to the cDNA and the genomic DNA of the Italian Mediterranean buffalo, respectively. In particular, the SNP g.222G>A and g.241C>T are responsible for two amino acid changes, Gly<sup>384</sup>>Arg and Thr<sup>390</sup>>Met, respectively (Figure 1).

#### *Analysis of the amino acid sequences and phylogenetic analysis*

According to Feng et al. (2000), the putative amino acid sequence derived from these exonic sequences confirmed the occurrence of seven hydrophobic transmembrane regions, which are characteristic of a G-protein coupled receptor. In the three extracellular loops (between transmembrane domains II and III, IV and V, VI and VII) little change was found among the species (Figure 2). This finding leads to state that, throughout mammalian evolution, the primary amino acid sequence of *OXTR* was rather conserved to guarantee the further protein structures for the specific ligand-receptor binding properties. In general, little differences were found only at the edges (N- and C-terminus) and at the third intracellular loop (between transmembrane domains V and VI) which likely have less functionality.

The multiple sequences alignment of the amino acid primary structures between the buffalo *OXTR* and the other considered species allowed the construction of the phylogenetic tree. Closely related mammals were gathered in different clades. In particular, the phylogenetic analysis showed 3 main clades: A, B and C. The first one includes four embranchments: Minke Whale/Orca embranchment, both members of artiodactyl infraorder Cetacea, American Bison/Yak, Italian Water

Buffalo (XP006070829)/Italian Water Buffalo (XM006070767), Indian Water Buffalo/Italian Water Buffalo (present work), cattle and sheep embranchment, all being members of cetartiodactyla. The clade B includes members of Carnivore and the Feral Pig, a member of cetartiodactyla, with a Feral Pig/Giant Panda embranchment, whereas the Clade C includes members of Rodentia, Soricomorpha, Lagomorpha and Chiroptera with a Rabbit/Flying Fox embranchment (Figure 3).

These data indicate a greater phylogenetic affinity among artiodactyla compared to that found with others orders. In particular, the Italian buffalo investigated herein showed a higher affinity with the Indian buffalo than the same Italian buffalo already present in database.

#### *Fatty acids composition profile*

The average fat content (%), the FA composition (%) and and FA classes (%) are reported in the Table 2. Saturated FA (SFA) represented 71.6% of total FA ranging from 57.9% to 85.9% and C16:0 and C18:1 c9 were the most represented (34.8% and 19.1%, respectively). Monounsaturated FA (MUFA) were 25.17% of total milk FA ranging from 12.6% to 37.4% and the C18:1 c9 represents the majority (76% of total MUFA). The concentration of polyunsaturated FA (PUFA) was 3.21% of the total FA ranging from 1.39% to 5.11%, with the C18:2 n6 predominating (49% of total PUFA), while the C18:3 n3 was present in a lower amount 0.32% of total FA. Trans FA (TFA) represented 1.70% of total FA with the C18:1 t11 the most abundant (59% of total TFA). CLA isomers amounted to 0.76% of total milk FA and the isomer c9, t11 CLA represented the majority (55% of total CLA). The FA profile obtained in this study is typical of animals farmed in intensive systems, with a reduced occurrence of unsaturated fatty acids, compared to graze-based systems.

Results of mixed model analysis did not find statistically significant effects of the age of the buffalo at calving on the fatty acid profile.

Month of calving significantly affected total CLA and TFA ( $P < 0.05$ ), evidencing a difference between January and February (data not reported for brevity). DIM affected significantly all the group of FA analyzed ( $P < 0.01$ ) denoting a marked lactation curve effects.

#### *Genotyping and association of OXTR polymorphism with milk FA composition traits*

It is well known that the cysteine can be easily oxidized to form a dimer containing a disulfide bridge between two cysteines. Such dimer is known as cystine and this feature is very important for the analysis of the primary structure, for effects on changes in secondary structure and for stabilization of the tertiary and quaternary structure of the proteins. Therefore, given the peculiarity of the mutation g.129C>T detected at the exon 3 and the resulting amino acid change (CGC<sup>Arg</sup>>TGC<sup>Cys</sup> in position 353), we decided to genotype the investigated buffalo population only for this SNP.

The genotyping of 306 buffalo DNA samples was performed at the KBiosciences (Herts, UK, <http://www.kbioscience.co.uk>) laboratory. The major allele had a relative frequency of 0.743 and the  $\chi^2$  value showed that there was no evidence of departure from the Hardy-Weinberg equilibrium ( $P \leq 0.05$ ). Genotype distribution of buffalo cows for the SNP g.129C>T is reported in Table 3.

Results of model [1] showed statistically significant effects of the SNP g.129C>T at the *OXTR* locus on the milk FA composition traits. In particular, the CC genotype was associated with higher contents of odd branched-chain fatty acids (OBCFA) ( $P < 0.0006$ ), polyunsaturated FA (PUFA n 3 and n 6) ( $P < 0.0032$  and  $P < 0.0006$ , respectively), and Stearic acid (C18) ( $P < 0.02$ ). In general, the estimated allele substitution effects ( $\alpha$ ) for these FAs indicate a positive percentage improvement with the increase of the number of C alleles. On the other hand, TT genotype animals showed higher level of Palmitic acid (C16) ( $P < 0.02$ ), confirmed also by a negative  $\alpha$  value (-0.732). Table 4 showed the simple statistics of the FA composition traits along with the genotype effects and allele substitution effects, including only significant associations. The contribution of the *OXTR*

*locus* to the phenotypic variance of the considered traits was about 0.05 for the FA classes but lower for the single FA (Table 4).

It is well known that n-3 FAs have important roles in the modulation and prevention of coronary heart disease. In fact, PUFA n-3 consumption lowers plasma triglycerides, resting heart rate, and blood pressure and might also improve myocardial filling and efficiency, lowers inflammation, and improves vascular function (Mozaffarian & Wu, 2011). Similarly, PUFA n-6 regulates a wide variety of biological functions, which range from blood pressure and blood clotting to the correct development and functioning of the brain and nervous system (Wall *et al* 2010). In addition, they have important roles in immune regulation and inflammation (Calder 2009). Regarding OBCFA, a potential antitumoral activity on human breast cancer cells has been reported (Wongtangintharn *et al.*, 2004). About Palmitic acids, which is the most abundant fatty acid of milk and dairy products, has been reported that replacing palmitic acid with oleic acid lowered total and LDL cholesterol concentrations, and the LDL:HDL ratio in humans (Kien *et al.*, 2014), even if its detrimental properties has been recently reappraised (Odia *et al.*, 2015).

Stearic acid has not been shown to elevate blood cholesterol and is rapidly converted to oleic acid *in vivo* (Bonamone & Grundy 1988). In view of these observations, and of the results of this study we can suggest that the *OXTR*-CC genotype animals might be useful in selection toward increasing of OBCFA, polyunsaturated FA (PUFA n-3 and n-6), stearic acid and decreasing palmitic acid content in milk of Mediterranean River buffalo. Nevertheless, further studies are needed to confirm this.

## **Conclusions**

In conclusion, the identified SNP is the first report to help in understanding the genetic structures of oxytocin receptor gene (*OXTR*) on fatty acid compositions in Mediterranean river buffalo. So far, polymorphisms of *OXTR* have been hypothesized to be correlated only with social behavior related phenomena in humans and other mammals. The SNP g.129C>T at the buffalo *OXTR locus* was

found to have a strong association with composition of several fatty acids of milk, in particular with higher contents of OBCFA, polyunsaturated FA (PUFA n 3 and n 6), Stearic acid (C18) and lower level of Palmitic acid. All these variations might help in producing “healthy” milk. Furthermore, with PUFA and stearic acid influencing meat traits, such as taste and texture, this SNP might even be associated with beef quality. The exact molecular and physiological mechanisms underlying the association of SNP with fatty acid content reported in this study are -so far- unknown and further studies need to deeply investigate this aspect. Nevertheless, the use of this polymorphism as genetic markers can be a useful tool for selection of animals and improve milk quality in Mediterranean river buffalo. This study provides useful genetic information regarding the relation between *OXTR* and fatty acid composition.

### **Acknowledgements**

This work was financially supported by the Italian Ministry for Agriculture and Forestry Policy – MiPAAF (INNOVAGEN project)

### **Conflict of interest**

None of the authors have any conflict of interest to declare.



## References

- AOAC (Association of Official Analytical Chemists)** 1990 Food Composition Additives, Natural Contaminants, 15th Edn., Arlington, TX, USA, pp 963
- Arunmozhi N, Singh SK, Sarath T, Agarwal SK, Doiphode A & Shankar U** 2014 Molecular Characterization of Oxytocin Receptor Gene in Water Buffalo (*Bubalus bubalis*). *Reproduction in Domestic Animals* **49** e56–e59
- Connor WE** 2000 Importance of n-3 fatty acids in health and disease. *American Journal of Clinical Nutrition* **71(1 Suppl)**171S-175S
- Badaoui B, Serradilla JM, Tomàs A, Urrutia B, Ares JL, Carrizosa J, Sànchez A, Jordana J & Amills M** 2007 Goat acetyl-coenzyme A carboxylase alpha: molecular characterization, polymorphism, and association with milk traits. *Journal of Dairy Science* **90(2)** 1039-1043
- Barberis C, Mouillac B & Durroux T** 1998 Structural bases of vasopressin/Oxytocin receptor function. *Journal of Endocrinology* **156** 223-229
- Bathgate R, Rust W & Balvers M** 1995 Structure and expression of the oxytocin receptor gene. *DNA and Cell Biology* **14** 1037–1048
- Bonamone A & Grundy SM** 1988 Effect of dietary stearic acid on plasma cholesterol and lipoprotein levels. *New England Journal of Medicine* **318(19)** 1244-1248

**Calder PC** 2009 Polyunsaturated fatty acids and inflammatory processes: new twists in an old tale.

*Biochimie* **91(6)** 791–795

**Cardoso DF, de Souza GF, Aspilcueta-Borquis RR, Araujo Neto FR, de Camargo GM, Hurtado-Lugo NA, Scalez DC, de Freitas AC, Albuquerque LG & Tonhati H** 2015 Variable number of tandem repeat polymorphisms in DGAT1 gene of buffaloes (*Bubalus bubalis*) is associated with milk constituents. *Journal of Dairy Science* **98(5)** 3492-3495

**de Freitas AC, de Camargo GM, Stafuzza NB, Aspilcueta-Borquis RR, Venturini GC, Dias MM, Cardoso DF & Tonhati H** 2016 Genetic association between SNPs in the DGAT1 gene and milk production traits in Murrah buffaloes. *Tropical Animal Health and Production* **48** 1421–1426

**Dixit SP, Sivalingam J, Tyagi AK, Saroha V, Sharma A & Nagda RK** 2015 Association of novel SNPs in the candidate genes affecting caprine milk fatty acids related to human health. *Meta Gene* **4** 45-56

**Feng HC** 2000 Investigation of the oxytocin receptor gene in sheep. *PhD thesis*, Victoria University of Technology

**Feng HC, Bhav M & Fairclough RJ** 2000 Regulation of oxytocin receptor gene expression in sheep: tissue specificity, multiple transcripts and mRNA editing. *Journal of Reproduction and Fertility* **120** 187–200

**Fleming TG, Spencer TE, Safe SH & Bazer FW** 2006 Estrogen regulates transcription of the ovine oxytocin receptor gene through GC-rich spl. Promoter elements. *Endocrinology* **147** 899–911

**Gimpl G & Fahrenholz F** 2001 The Oxytocin Receptor system: structure, function and regulation. *Physiological Reviews* **81** 629–683

**Goossens M & Kan YW** 1981 DNA analysis in the diagnosis of hemoglobin disorders. *Methods in Enzymology* **76** 805-817

**Griinari JM, Dwyer DA, McGuire MA, Bauman DE, Palmquist DL & Nurmela KV** 1998 Trans-octadecenoic acids and milk fat depression in lactating dairy cows. *Journal of Dairy Science* **81(5)** 1251-1261

**Gutiérrez-Gil B, Wiener P, Richardson RI, Wood JD & Williams JL** 2010 Identification of QTL with effects on fatty acid composition of meat in a Charolais x Holstein cross population. *Meat Science* **85(4)** 721-729

**International Dairy Federation** 1999 Milk Fat. Preparation of fatty acid methyl esters. *FIL-IDF Standard* 182:1999. IDF, Brussels, Belgium

**Mao J, Chen RJ, Chang LL, Chen Y, Ji DJ, Wu XX, Shi XK, Wu HT, Zhang MR, Yang ZP, Konig S & Yang LG** 2012 Effects of SCD1- and DGAT1-genes on production traits of Chinese Holstein cows located in the Delta Region of Yangtze River. *Livestock Science* **145** 280-286

**Matsumoto H, Inada S, Kobayashi E, Abe T, Hasebe H, Sasazaki S, Oyama K & Mannen H** 2012 Identification of SNPs in the FASN gene and their effect on fatty acid milk composition in Holstein cattle. *Livestock Science* **144** 281-284

**Moioli B, Scatà MC, De Matteis G, Annicchiarico G, Catillo G & Napolitano F** 2013 The ACACA gene is a potential candidate gene for fat content in sheep milk. *Animal Genetics* **44(5)** 601-603

**Molee A, Poompramun C & Mernkrathoke P** 2015 Effect of casein genes - beta-LGB, DGAT1, GH, and LHR - on milk production and milk composition traits in crossbred Holsteins. *Genetics and molecular research* **14(1)** 2561-2571

**Mozaffarian D. & Wu JH** 2011 Omega-3 fatty acids and cardiovascular disease: effects on risk factors, molecular pathways, and clinical events. *Journal of the American College of Cardiology* **58(20)** 2047-2067

**Nudda A, Battacone G, Bee G, Boe R, Castanares N, Lovicu M & Pulina G** 2015 Effect of linseed supplementation of the gestation and lactation diets of dairy ewes on the growth performance and the intramuscular fatty acid composition of their lambs. *Animal* **9(5)** 800-809

**Nudda A, McGuire MK, Battacone G, Manca MG, Boe R & Pulina G** 2011 Documentation of fatty acid profiles in lamb meat and lamb-based infant foods. *Journal of Food Science* **76(2)** H43-7

**Odia OJ, Ofori S & Maduka O** 2015 Palm oil and the heart: A review. *World Journal of Cardiology* **7(3)** 144-149

**Kien CL, Bunn JY, Stevens R, Bain J, Ikayeva O, Crain K, Koves TR & Muoio DM** 2014 Dietary intake of palmitate and oleate has broad impact on systemic and tissue lipid profiles in humans. *American Journal of Clinical Nutrition* **99** 436-445

**Komisarek J, Michalak A & Walendowska A** 2011 The effects of polymorphisms in DGAT1, GH and GHR genes on reproduction and production traits in Jersey cows. *Animal Science Papers and Reports* **29** 29-36

**Kramer JK, Cruz-Hernandez C, Deng Z, Zhou J, Jahreis G & Dugan ME** 2004 Analysis of conjugated linoleic acid and trans 18:1 isomers in synthetic and animal products. *American Journal of Clinical Nutrition* **79(6 Suppl)** 1137S-1145S

**Pauciullo A, Cosenza G, Steri R, Coletta A, La Battaglia A, Di Bernardino D, Macciotta NNP & Ramunno L** 2012 A single nucleotide polymorphism (SNP) in the promoter region of River buffalo Stearoyl CoA Desaturase gene (SCD) is associated with milk yield. *Journal of Dairy Research*. **79(4)** 429-435

**Scatà MC, Napolitano F, Casu S, Carta A, De Matteis G, Signorelli F, Annicchiarico G, Catillo G & Moioli B** 2009 Ovine acyl CoA:diacylglycerol acyltransferase 1 – molecular characterization, polymorphisms and association with milk traits. *Animal Genetics*, **40** 737–742

**Tamura K, Dudley J, Nei M & Kumar S** 2007 MEGA4: Molecular Evolutionary Genetics Analysis (MEGA) Software Version 4.0. *Molecular Biology and Evolution* **24**, 1596-1599

**Telgmann R, Bathgate RAD, Jaeger S, Tillmann G & Ivell R** 2003 Transcriptional regulation of the bovine oxytocin receptor gene. *Biology of Reproduction.*, **68** 1015–1026

**Verdurico LC, Gandra JR, Freitas Junior JE, Barletta RV, Venturelli BC, Mingoti RD, Vendramini TH & Rennó FP** 2012 Evaluation of the Milk Fatty Acid Profile from Mediterranean Buffalo Cows in the First Eight Weeks of Lactation. *Journal of Buffalo Science*, **1** 177-182

**Vohra V, Bhattacharya TK, Dayal S, Kumar P & Sharma A** 2006 Genetic variants of beta-lactoglobulin gene and its association with milk composition traits in riverine buffalo. *Journal of Dairy Research* **73** 499–503

**Zhang S, Knight TJ, Reecy JM, Wheeler TL, Shackelford SD, Cundiff L.V & Beitz DC** 2009 Associations of polymorphisms in the promoter I of bovine acetyl-CoA carboxylase-alpha gene with beef fatty acid composition. *Animal Genetics* **41** 417-420

**Wall R, Ross RP, Fitzgerald GF & Stanton C** 2010 Fatty acids from fish: the anti-inflammatory potential of longchain omega-3 fatty acids. *Nutrition Reviews* **68(5)** 280–289

**Wongtangintharn S, Oku H, Iwasaki H % Toda T** 2004 Effect of branched-chain fatty acids on fatty acid biosynthesis of human breast cancer cells. *Journal of Nutritional Science and Vitaminology*. **50(2)** 137-143

**Table 1.** Oligonucleotide primers sequence and positions

	Position nt		Primers sequence (5'-3')*	EMBL	TM
	18277828-18277847	Forward	TCCCTCTTGCTGCTTTAAGT		
<b>Exon 1</b>	Complementary to:			NC_007320.5	62 °C
	18278599 - 18278581	Reverse	ACAACCGCTTCTTTGCCTC		
	18279074 - 18279090	Forward	GCCCTCGGGGTTTGTTT		
<b>Exon 2</b>	Complementary to:			NC_007320.5	62 °C
	18280265 - 18280249	Reverse	CACGAAGCCCGCCAAAC		
	18287534-18287556	Forward	TGATGCCGTGTTCTCCTTTCTTC		
<b>Exon 3</b>	Complementary to:			NC_007320.5	67 °C
	18287926-18287903	Reverse	GGGTACAAACTGAAAGGTACCTTA		

\* Primers were designed by means of DNAsis-Pro (Hitachi Software Engineering Co., Japan)

< Exon 1

GCTTCGTGGGAACCGGCAAGACCGGCCTTCCGCGCCTCCTAGCGGATCTATGTGGTGGTACAGCCTACGCTGCACGCTGCAGAAAAGCTGGCCACCGGCA

GGCATTGCCGCATCCTAACGCCGTCCGCGCGCATAGCCTCGACAGGGCTCCTTGATCGCTTCTAGTCCCTACCCAGCCACCAGTCAGGGCTGCAGGGCAG

GTGATTCCACCCAGGTTACAGCGTCCGAKCCCTTAGCATCCTATCAGACTGGGTGCCGGCAGCAGCCACTTCAACCTGCCCCGGGAGCACACCGGTCTT

-G-

TGGAACCATCCATGGCGGTGCGACTTCCCCAGGGAACCAAGTGTAGTTTCGCCCTACGACTCGGTTTTCAGGTAGCTGGATCCAGCGCATGAGTGGACAGGA

TGTTTGGCGCTGGTGGAGCCACTGGGACCCGAGAGAAGGTGTTGGAGTGCCTTGAGATCCTAGTTCGGGAGGCGCCGCCGGTACTCTGAGAGATTGTAAA

-T-

GTACCTGCTCAGGATCTCGAAGGAGATCCCTTGGCTGTCGGGGGCCAAGACKCCTGTGAGTTCSSAACCTTCGASGKTGCTGGGCTGGGGAGTATCTC

-T-----G-----C-T-

Exon 2

CCCCGAGAGGTGTACGGGTACTGAGAACAGAGTCCGACCCAGCAGATCGGTCTCGGAGTCTCAGGGAGGGGAACCCAGGAGCCCCACCCGCTCCA

M<sup>1</sup> E G A

GGCAGCCCGGACTGCAAGTCGGGCCCGCCCCGCGCCGCTTAAAGGACTCGAAGGCCGGGGCGCACCCGCGCGCCACGGTCAATGGAGGGTGCCT

-----C-----

F A A N W S A E E V N G S A A P P G T E G N R T A G P P Q R N E A L  
TTGCGGCAACTGGAGCGCTGAGGAGGTCAACGGGAGCGCGCCGCCGGGAACCCAGGGCAATCGCACTGCCGGGCGCCACAGCGCAACGAGGCCT

-C-

A R V E V A V L C L I L F L A L S G N A C V L L A L R T T R H K H  
GGCGGGGTGGAGGTGGCCGTGCTGTGCCTCATCTGTTCCTGGCGCTGAGCGGCAACGCGTGCCTGCTGGCGCTGCCACCCAGCGCCACAAGCAC

-C-

A<sup>60</sup>

S R L F F F M K H L S I A D L V V A V F Q V L P Q L L W D I T F R  
TCGCGCCTCTTCTTCTCATGAAGCACCTGAGCATAGCCGACCTGGTGGTGGCGGTTCAGGTGCTGCCGAGCTTCTGTGGGACATCACGTTCCGCT

F Y G P D L L C R L V K Y L Q V V G M F A S T Y L L L L M S L D R C  
TCTACGGGCCCGACCTGCTGTGCCGCTCGTCAAGTACCTGCAGGTGGTGGCATGTTTCGCGTCCACCTACCTGCTGCTCATGTGCTCGACCGCTG

L A I C Q P L R S L S R R T D R L A V L V T W L G C L V A S A P Q  
CCTGGCCATCTGCCAGCCGCTGCGCTCGCTGAGCCGCCGACCCGACCGCTGGCGGTACTCGTCACATGGCTCGGCTGCCTGGTGGCCAGCGCCGCGAG

-T-

-T-

V H I F S L R E V A D G V F D C W A V F I Q P W G P K A Y I T W I  
GTGCACATCTTCTCGCTGCGGAGGTGGCCGACGGTGTCTTGCAGTCTGGGCCGTTTTCATTC AACCTGGGGGCCAAAGCTACATCACGTGGATCA

-G-

T L V V Y I V P V I V L A T C Y G L I S F K I W Q N L R L K T A A A  
CGCTCGTCTACATGTGCCGCTCATCGTCTGCCACCTGCTATGGCCTTATCAGCTTCAAGATCTGGCAGAATTTACGGCTCAAGACGGCGGGCGG



```

  A A E A A A G A E G A A A D W A G R A A L A R V S N V K L I S K A
GGCGGCAGAGGCTGCCCGGGGGCTGAGGGCGGGCGGCAGACTGGGCGGGGGCGGGCTCTGGCCCCGCTCAGCAACGTC AAGCTCATCTCTAAGGCC
-----
-----
-----
  K I R T V K M T F I V V L A F I V C W T P F F F V Q M W S V W D A
AAGATCCGCACGGTCAAGATGACCTTCATCGTCGTGCTGGCCTTCATCGTGTGCTGGACGCCATTC TTTTCGTGCAGATGTGGAGTGTCTGGGATGCCG
-----
-----
-----
                                     R302
  Exon 3 >
D A P K E A S P F I I A M L L A S L N S C C N P W I Y M L F T G H L
ATGCGCCCAAGGAAGCCTCGCCTTTTCATCATCGCCATGCTCCTGGCCAGCCTCAACAGCTGCTGCAACCCCTGGATCTACATGCTCTTCACGGGCCACCT
-----
-----
-----
                                     R353
  F Q E L V Q R F L C C S F R C L K G S R P G E T S V S K K S N S S
CTTCCAAGAACTTGTGCAGCGCTTCCTCTGCTGCTCATTCCGCGYGCCTGAAAGGMAGCCGGCCTGGGGAGACAAGCGTCAGCAAAAAGAGCAACTCGTCC
-----
-----
-----
                                     C-----A
                                     C-----C
                                     C-----C
  T F V L S Q Y S S G Q R G C S Q P S T L391*
ACCTTTGTCTGAGCCAGTACAGCTCCGGCCAGAGAGGATGCTCGCAGCCATCCACGCTGTGA... Present study
-----
-----
-----
                                     A-----T
                                     A-----T
                                     ...
                                     ...
                                     ...
                                     R384                                     M390

```

**Figure 1.** Alignment of the assembled Italian Mediterranean buffalo *OXTR* exonic sequences (present study) with sequences available in EMBL related to the Indian buffalo *OXTR* cDNA (FJ917398), Italian Mediterranean buffalo *OXTR* cDNA (KI418690.1), non-annotated genomic bubaline sequence (NW\_005785401.1) and genomic DNA (XM\_006070767). Alignment was performed using DNAsis pro Software v2.0 (Hitachi). The sites of exon-exon junctions are underlined. In bold type the portion of exon 1 that appears to be differentially spliced in the bovine (exon 1a). Dashes indicate identical nucleotides. The stop codon is symbolized by \*. Amino acid numbering is relative to the first aminoacid (Met) of the deduced encoded protein.

```

*****
Italian Water Buffalo MEGAFANWSAEE VNGSAAPPGTEGNRTAGPPQRNEALARVEVAVLCLILFLALSGNACVLLALRTRHKHSRLFFFMKH predicted, present work
Italian Water Buffalo -----
Indian Water Buffalo -----A-----
Italian Water Buffalo ----- predicted
Cattle -----A-----
Yak -----A----- predicted
Sheep -----A-----S-----
American Bison -----A----- predicted
Orca ---L-----A-----A---L-----R----- predicted
Minke Whale ---L-----A-----A-----Q----- predicted
Giant Panda ---LV-----A---E---EA----- predicted
Domestic Dog --R-L-----A G---E-A-AAQ-----
Domestic Cat ---L-----A---E---A----- predicted
Feral Pig ---VL-----A--S---EA-----
Human ---L-----A A-A---A-----R-----L-----Q-----
Brown Rat ---TP-----V-L DL--GV--E-----
Black Flying Fox ---LL-----V-A-----P--VV---L-----S-----I----- predicted
European Rabbit ---LV-----T-A -GA--VS---TE-G-V-----V-----
Cape golden mole ---L-----AAI-A-V-L-----L-----R----- predicted

```

```

*****
Italian Water Buffalo LSIADLVAVFQVLPQLLWDITFRFYGPDLLCRLVKYLQVGMFASTYLLLLMSLDRCLAICQPLRSLSRRTDRLAVLVTW
Italian Water Buffalo -----
Indian Water Buffalo -----
Italian Water Buffalo -----
Cattle -----
Yak -----
Sheep -----A-----R-----A-----
American Bison -----
Orca -----V-R-----A-----
Minke Whale -----V-R--A-----A-----
Giant Panda -----A-R--A-----A-----
Domestic Dog -----A-R--A-----A-----
Domestic Cat -----A-R--A-----A-----
Feral Pig -----A-R-PA-----A-----
Human -----R-----A-----
Brown Rat -----R-----G-----
Black Flying Fox -----A-N--A-----A-----
European Rabbit -----M-----R--T-R-----A-----
Cape golden mole -----R--A-----A-----

```

```

*****
Italian Water Buffalo  LGCLVASAPQVHIFSLREVADGVFDCWAVFIQPWGPKEYITWITLVVYIVPVIVLATCYGLISFKIWQNLRLKTAIAAAEA
Italian Water Buffalo  -----
Indian Water Buffalo  -----V-----
Italian Water Buffalo  -----
Cattle                 -----A-----
Yak                   -----A-----
Sheep                 -----A-----A-----E-----
American Bison        -----A-I-----
Orca                  -----A-L-A-T-----
Minke Whale           -----A-A-T-P-----
Giant Panda           -----A-A-----
Domestic Dog          -----V-S-A-----
Domestic Cat          -----A-V-G-----
Feral Pig             -----A-A-E-----
Human                 -----A-----
Brown Rat             -----V-A-A-----
Black Flying Fox      -----V-E-V-I-A-C-F-V-----
European Rabbit       -----E-V-A-I-A-L-A-----
Cape golden mole      -----V-V-A-I-F-A-DT-----

```

```

*****
Italian Water Buffalo  AAGAEGAAADWAG  RAALARVSNVKLISKAKIRTVKMTFIVLAFIVCWTPPFFVQMWVWDADAPKEASPFITAMLLA
Italian Water Buffalo  -----
Indian Water Buffalo  -----R-----
Italian Water Buffalo  -----
Cattle                 -----E-I-----
Yak                   -----E-I-T-----
Sheep                 -----C-A-----
American Bison        -----E-I-----
Orca                  -----P-C-G-S-I-E-A-----
Minke Whale           -----P-V-S-HG-S-I-E-A-----
Giant Panda           -----S-I-N-A-----
Domestic Dog          -----E-R-S-I-A-----
Domestic Cat          -----QE--GS--S-I-N-A-----
Feral Pig             -----I-T-GSR-S-I-A-----
Human                 -----E-P-GDG-V-S-I-N-A-V-----
Brown Rat             -----E-NDA-G-S-I-VN-A-----
Black Flying Fox      -----P-SSGE-I-T-A-----
European Rabbit       -----GPEGA-AA-GAE-S-I-A-----
Cape golden mole      -----T-GV-LTP-S-I-A-----

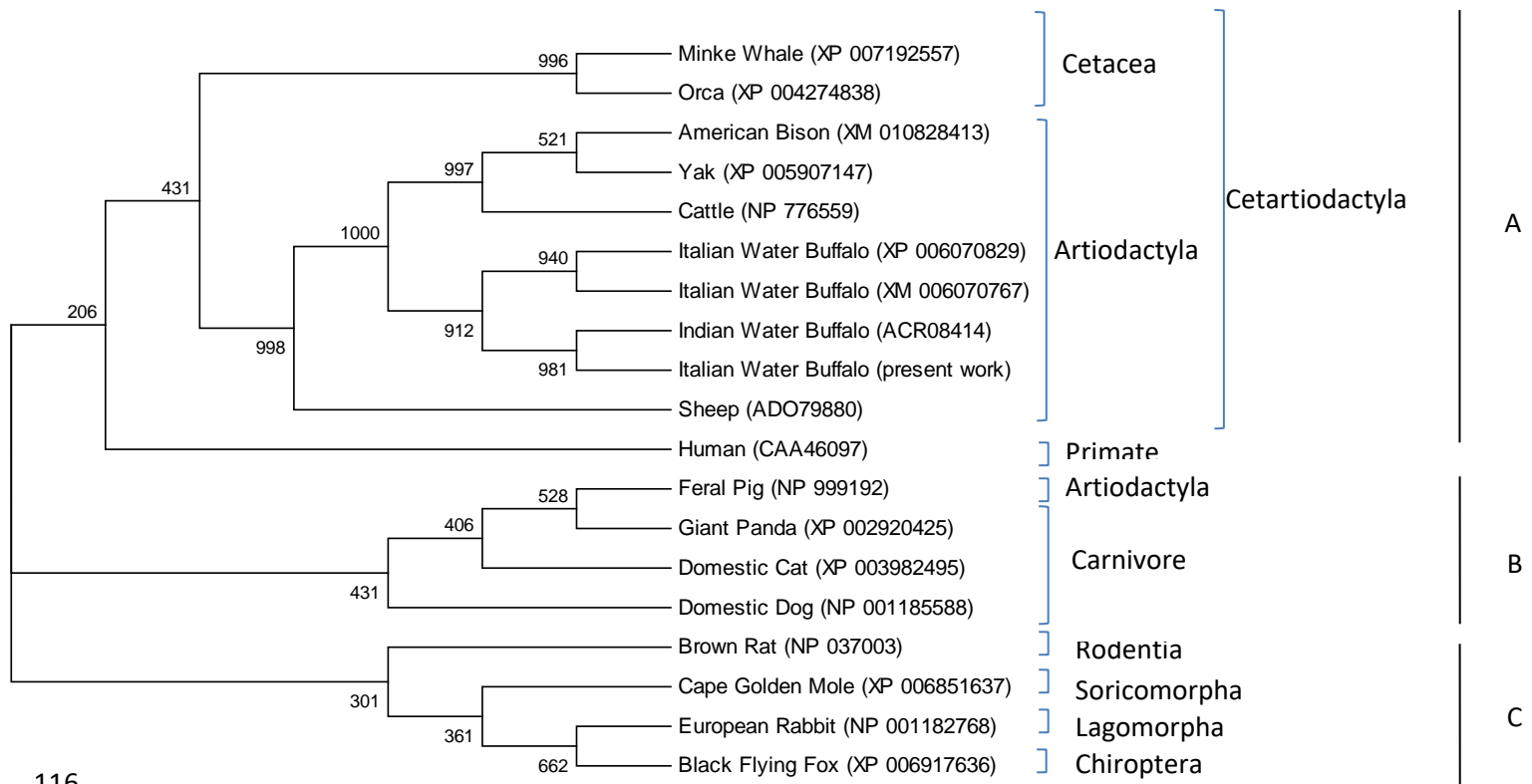
```

```

*****
Italian Water Buffalo SLNSCCNPWIYMLFTGHLFQELVQRFLCCSFRCLKGSRPGETSVSKKSNSSTFVLSQYSSGQRGCSQPSTL
Italian Water Buffalo -----R-----R-----M- EMBL Acc. N. XM_006070767
Indian Water Buffalo -----R----- EMBL Acc. N. ACR08414
Italian Water Buffalo -----R-----R-----M- EMBL Acc. N. XP_006070829
Cattle -----R-----S--R----- EMBL Acc. N. NP_776559
Yak -----R-----S--R----- EMBL Acc. N. XP_005907147
Sheep -----D-----R--Q-----IH-Y---RH--S--S-----V EMBL Acc. N. ADO79880
American Bison -----R-----S--R----- EMBL Acc. N. XM_010828413
Orca -----H-----SSC---R--R-----PD--S-----V EMBL Acc. N. XP_004274838
Minke Whale -----L---R--HD-----SSCQ--R--R-----PD--S--G-L---AV EMBL Acc. N. XP_007192557
Giant Panda -----H---C---SSC-----RH--S--S---A-V EMBL Acc. N. XP_002920425
Domestic Dog -----H-----SSY---N-----HH--S--SS---V EMBL Acc. N. NP_001185588
Domestic Cat -----H-----SSY-----RH--S--SS---V EMBL Acc. N. XP_003982495
Feral Pig -----H-----SSH--T-----H--S--KS-- EMBL Acc. N. NP_999192
Human -----H-----ASY---R-L---A-----S---HR--S--S-----A EMBL Acc. N. CAA446097
Brown Rat -----H-----F--A-Y-----RR--S--S-----SA EMBL Acc. N. NP_037003
Black Flying Fox -----S---H--M-----CGY---P-----RH--S--S-----SV EMBL Acc. N. XP_006917636
European Rabbit -----L-----PGYRR-G-Q-----RR--S--S---T-V EMBL Acc. N. NP_001182768
Cape golden mole -----H--M-----SSYM---AR-----RH--S--S---VV EMBL Acc. N. XP_006851637

```

**Figure 2.** Comparison of protein-coding regions of the water buffalo *OXTR* with cattle, yak, sheep, bison, orca, minke whale, giant panda, dog, cat, pig, human, rat, flying fox, rabbit and cape golden mole. Accession numbers of sequences compared is shown in the figure. Dashes (–) indicate the identical amino acid residues. Amino acids full matching the buffalo sequence of the present work are shown as shaded. The protein portion corresponding to the 7 transmembrane receptor (rhodopsin family) is underlined, whereas the transmembrane (TM) domains are indicated by asterisks (\*)



116

117

118 **Figure 3.** Phylogenetic relationship of the peptide sequence of Italian water buffalo (*Bubalus*  
 119 *bubalis*) *OXTR* with other 14 peptide/protein sequences reported in different mammals. The MEGA  
 120 v4.0 program was used to reconstruct a phylogenetic tree. Bootstrap values are indicated.  
 121

122 **Table 2.** Average fat content (%), fatty acid composition (%) and fatty acid classes (%) of 306 dairy  
 123 buffaloes milk samples measured in 14 herd located in Southern Italy

Herd	1	2	3	4	5	6	7	8	9	10	11	12	13	14	P
Fat (%)	7.44	7.99	7.94	7.28	7.00	7.80	6.93	8.03	9.34	8.43	8.58	6.24	7.42	7.59	**
Fatty acid (%)															
C4:0	3.47	4.38	3.85	3.90	3.51	4.10	4.35	3.88	3.86	3.65	4.42	3.93	3.80	3.60	**
C6:0	1.61	1.96	2.04	1.86	1.71	1.69	1.83	1.62	1.49	1.52	1.93	1.54	1.64	1.52	**
C8:0	0.8	0.98	1.14	0.95	0.90	0.78	0.86	0.77	0.66	0.73	0.95	0.69	0.79	0.72	**
C10:0	1.73	2.05	2.53	2.03	1.96	1.60	1.77	1.65	1.33	1.47	1.95	1.39	1.65	1.49	**
C12:0	2.38	2.72	3.30	2.63	2.60	2.11	2.34	2.28	1.76	1.96	2.57	1.88	2.22	1.98	**
C14:0	11.07	12.55	12.74	11.65	11.18	10.16	10.81	10.62	9.49	9.26	11.56	9.95	10.50	9.61	**
C14:1	0.73	0.84	0.93	0.59	0.71	0.59	0.85	0.57	0.46	0.50	0.81	0.61	0.56	0.52	**
C15:0	1.26	1.24	1.24	1.23	1.19	1-10	1.28	0.97	0.89	1.00	1.05	1.03	1.09	0.92	**
C16:0	37.68	39.00	33.50	33.93	33.36	33.83	35.65	33.50	34.45	32.17	35.26	33.65	35.21	34.29	**
C16:1	2.31	2.34	2.19	1.57	1.83	1.76	2.52	1.60	1.49	1.55	2.29	1.78	1.60	1.53	**
C17:0	0.55	0.47	0.54	0.57	0.48	0.48	0.56	0.48	0.43	0.50	0.44	0.58	0.48	0.46	**
C17:1	0.23	0.16	0.21	0.18	0.16	0.16	0.24	0.15	0.12	0.13	0.17	0.22	0.15	0.14	**
C18:0	9.07	8.46	9.21	11.54	11.64	11.20	9.72	12.67	14.24	14.22	8.86	12.15	12.14	12.71	**
C18: <i>t11</i> (VA)	0.78	0.67	0.77	0.98	0.84	1.11	0.96	0.94	1.15	1.21	0.68	1.05	1.11	1.71	**
CLA <i>c9,t11</i> (RA)	0.38	0.33	0.36	0.39	0.38	0.43	0.46	0.36	0.39	0.45	0.35	0.45	0.43	0.67	**
C18:2 <i>n6</i> (LA)	1.42	1.28	1.56	1.34	1.95	1.51	1.32	1.36	1.62	2.51	1.58	1.31	1.36	1.55	**
C18:3 <i>n3</i> (ALA)	0.33	0.22	0.22	0.19	0.22	0.26	0.19	0.18	0.21	0.41	0.26	0.16	0.22	0.17	**
C20:4 <i>n6</i> (ARA)	0.10	0.08	0.13	0.11	0.13	0.09	0.12	0.08	0.07	0.12	0.09	0.12	0.09	0.10	**
C20:5 <i>n3</i> (EPA)	0.03	0.02	0.02	0.03	0.02	0.02	0.02	0.01	0.02	0.03	0.02	0.04	0.02	0.03	**
C22:5 <i>n3</i> (DPA)	0.04	0.02	0.04	0.04	0.04	0.03	0.03	0.02	0.03	0.04	0.03	0.05	0.04	0.03	**
C22:6 <i>n6</i> (DHA)	0.00	0.00	0.01	0.01	0.01	0.00	0.00	0.00	0.00	0.00	0.00	0.00	0.00	0.00	ns
Fatty acid classes (%)															
SCFA	7.74	9.50	9.72	8.87	8.22	8.26	8.94	7.99	7.39	7.44	9.37	7.61	7.96	7.40	**
MCFA	58.79	61.80	57.64	54.74	54.11	52.54	57.24	52.74	51.42	49.50	56.47	52.28	54.08	51.54	**
LCFA	33.47	28.70	32.64	36.38	37.67	39.21	33.82	39.27	41.19	43.06	34.17	40.10	37.96	41.06	**
SFA	72.09	76.18	72.96	72.61	71.03	69.18	71.97	70.84	70.75	68.80	71.12	69.22	71.59	69.26	**
MUFA	24.69	21.22	23.86	24.15	25.31	27.43	25.13	26.36	26.13	26.54	25.80	27.61	25.27	26.98	**
PUFA	3.14	2.53	3.07	3.04	3.50	3.16	2.82	2.67	3.02	4.47	2.94	3.02	2.92	3.51	**
OBCFA	4.14	4.01	4.45	3.87	3.73	4.14	4.10	4.01	3.70	4.83	3.78	3.33	3.46	4.03	**
PUFA <i>n3</i>	0.42	0.28	0.29	0.28	0.30	0.33	0.26	0.22	0.26	0.49	0.32	0.26	0.28	0.24	**
PUFA <i>n6</i>	1.64	1.44	1.84	1.56	2.23	1.72	1.58	1.55	1.80	2.80	1.78	1.58	1.58	1.79	**
Ratio and index															
<i>n6/n3</i>	4.25	5.31	6.41	5.64	7.47	5.30	6.26	6.98	7.47	5.70	5.55	6.17	5.61	7.46	**
AI	3.15	3.98	3.33	3.09	2.88	2.61	3.07	2.73	2.62	2.30	2.95	2.51	2.86	2.48	**
TI	2.67	2.97	2.33	2.37	2.04	2.15	2.39	2.05	2.00	1.90	2.32	2.05	2.32	1.96	**

125 **Table 3.** Genotyping data, allele frequency, relative frequencies of buffalo cows of the SNP g.129C>T at the exon 3 of the *OXTR* gene in  
 126 Mediterranean river buffalo population.

Position	Genotype distribution				Allele freq		Relative frequencies used in the model			
		CC	CT	TT	TOT	C	T	Genotype	n. of cows	n. of farms
exon 3 nt 129	Obs.	173	109	24	306	0,743	0,257	CC	56,53	14
	Exp.	169,14	116,72	20,14				CT	35,62	
	$\chi^2=1.339$							TT	7,84	
					Total	100	14			

127  
 128  
 129

130 **Table 4.** Least squares Means of the SNP g.129C>T genotypes at the exon 3 of the *OXTR* gene for  
 131 some FA, estimation of average substitution effects ( $\alpha$ ) of a thymine for a cytosine, and contribution  
 132 of the polymorphism to the phenotypic variance ( $r^2$ ).  
 133

		P	CC (173)	CT (109)	TT (24)	$\alpha$	$r^2_{OXTR}$
<i>OXTR</i> g.129C>T	OBCFA	0.0006	3.94 <sup>A</sup>	3.89 <sup>A</sup>	3.57 <sup>B</sup>	0.127	0.05
	PUFA n 3	0.0032	0.313 <sup>A</sup>	0.285 <sup>B</sup>	0.287 <sup>AB</sup>	0.019	0.04
	PUFA n 6	0.0006	1.77 <sup>A</sup>	1.63 <sup>B</sup>	1.70 <sup>AB</sup>	0.079	0.05
	C18	0.02	11.13 <sup>a</sup>	10.48 <sup>b</sup>	10.61 <sup>ab</sup>	0.426	0.004
	C16	0.02	34.46 <sup>a</sup>	35.25 <sup>b</sup>	35.84 <sup>ab</sup>	-0.732	0.02

134