

AperTO - Archivio Istituzionale Open Access dell'Università di Torino

Role of Late Jurassic intra-oceanic structural inheritance in the Alpine tectonic evolution of the Monviso meta-ophiolite Complex (Western Alps)

This is the author's manuscript

Original Citation:

Availability:

This version is available <http://hdl.handle.net/2318/1645864> since 2018-07-11T17:32:32Z

Published version:

DOI:10.1017/S0016756817000553

Terms of use:

Open Access

Anyone can freely access the full text of works made available as "Open Access". Works made available under a Creative Commons license can be used according to the terms and conditions of said license. Use of all other works requires consent of the right holder (author or publisher) if not exempted from copyright protection by the applicable law.

(Article begins on next page)



UNIVERSITA' DEGLI STUDI DI TORINO

This is an author version of the contribution published on:

Questa è la versione dell'autore dell'opera:

Balestro et al. (2017) –Geological Magazine, First view

doi: 10.1017/S0016756817000553

The definitive version is available at:

La versione definitiva è disponibile alla URL:

<https://www.cambridge.org/core/journals/geological-magazine>

**Role of Late Jurassic intra-oceanic structural inheritance
in the Alpine tectonic evolution of the Monviso meta-ophiolite Complex
(Western Alps)**

**¹Gianni Balestro, ^{1*}Andrea Festa, ¹Alessandro Borghi, ¹Daniele Castelli,
¹Marco Gattiglio, and ²Paola Tartarotti**

1: Dipartimento di Scienze della Terra, Università di Torino, Via Valperga Caluso, 35, 10125 - Torino, Italy

2: Dipartimento di Scienze della Terra, Università di Milano, Via Mangiagalli, 34, 20133 - Milano, Italy

***Corresponding author:**

Andrea Festa

E-mail: andrea.festa@unito.it

Phone: [+39-0116705186](tel:+39-0116705186)

Abstract

The eclogite-facies Monviso meta-ophiolite Complex (MO) in the Western Alps represents a well preserved fragment of oceanic lithosphere and related Upper Jurassic–Lower Cretaceous sedimentary covers. This metaophiolite sequence records the evolution of an oceanic core complex formed by mantle exhumation along an intra-oceanic detachment fault (the Baracun Shear Zone), related to the opening of the Ligurian–Piedmont oceanic basin (Alpine Tethys). On the basis of a detailed geological mapping, and structural, stratigraphic and petrological observations, we propose a new interpretation for the tectono-stratigraphic architecture of the MO, and discuss the role played by structural inheritance in its formation. We document that subduction- and exhumation-related Alpine tectonics were strongly influenced by the inherited Jurassic intra-oceanic tectono-sedimentary physiography. The latter, although strongly deformed during a major Alpine stage of non-cylindrical W-verging folding and faulting along exhumation-related Alpine shear zones (i.e., the Granero-Casteldelfino and Villanova-Armoine shear zones), was not completely dismembered in different tectonic units or subduction-related mélanges as suggested in previous interpretations. The present-day architecture of the MO results from nappe-scale folding with a significant component of shearing, and strain partitioning of the Alpine deformation, which were controlled by the inherited occurrence of (i) lateral and vertical variations of facies and thickness of sediments, (ii) intra-oceanic fault-rock assemblage, which acted as weak horizons in concentrating deformation, and (iii) remnants of a volcanic ridge, which consists of massive metabasalt. Thus, the recognition of pre-collisional, intra-oceanic, tectono-stratigraphic inheritance represents an important step in reconstructing the tectonic evolution of meta-ophiolite units in orogenic belts.

Key words: Western Alps; Jurassic Monviso ophiolite; structural inheritance; oceanic core complex; Alpine tectonics.

1. Introduction

Structural inheritance is a key factor in influencing and controlling the tectonic evolution and structural deformation pattern of orogenic belts during each stage of the Wilson cycle (Wilson, 1966; Dewey and Spall, 1975), where continents recurrently disintegrate and reassemble, and oceanic crust and lithosphere form, subduct and recycle. Although different contrasting models exist, several studies document the significant role of structural inheritance on the location of extension and continental breakup, rift and passive margin evolution and segmentation (e.g. Dunbar and Sawyer, 1989; Piqué and Laville, 1996; Theunissen et al., 1996; Tommasi and Vauchez, 2001; Petersen and Schiffer, 2016). Observation that rift propagation is not random but tends to follow the trend of pre-existing orogenic fabric and plates, systematically reactivating ancient lithospheric structures, evidences the active role played by inherited structures in rifting processes (e.g., Tommasi and Vauchez, 2001). In convergent tectonic settings, oceanic extensional detachment faults (e.g., Maffione et al., 2015), as well as fracture zones (e.g., Toth and Gurnis, 1998; Hall et al., 2003; Leng and Gurnis, 2011), represent among others, important inherited structures which may provide ideal conditions to nucleate new subduction zones. Oceanic detachment faults, which are commonly associated with oceanic core complexes documented along the slow- (Atlantis Massif, Mid-Atlantic Ridge – MAR) and ultraslow-spreading (Atlantis Bank, Southern Indian Ridge – SWIR) ridges (e.g., Cannat, 1993; Tucholke et al., 1998; Boschi et al., 2006; Karson et al., 2006; Dick et al., 2008; Miranda and Dilek, 2010), pervasively cut the lithosphere to depth of 7–8 km (e.g., Dick et al., 2008; Escartin et al., 2008; Reston and Ranero, 2011). They represent weakness zones in the lithosphere, characterized by mylonitic to cataclastic shear zones up to hundreds of meters thick, and dominated by serpentine minerals and other phyllosilicates (e.g., talc and chlorite; see Boschi et al., 2006, 2013). These detachment faults are, in fact, ideal pathways for fluid infiltration in the lower crust and upper mantle, triggering hydrothermal alteration and serpentinization (see e.g., Shroeder et al., 2002; Mével, 2003; Boschi et al., 2006, 2013).

In the Western Alps, the understanding of the role played by tectono-stratigraphic inheritances, in conditioning and controlling their present-day architecture, is often difficult because of multistage, intense deformation and metamorphic recrystallization they experienced during subduction and subsequent continental collision. As a result, the interpretation of the tectonic evolution of Western Alps may be

partially incomplete, misleading the role played by subduction- and collisional-related processes if that of inherited structures is not adequately taken in consideration and understood.

In this paper, we propose a new interpretation for the tectono-stratigraphic architecture of the Monviso meta-ophiolite Complex (MO hereafter), which represents one of the best preserved eclogite-facies ophiolite complex in Western Alps (Fig. 1). We present here the first geological map of the whole MO and, on the basis of systematic structural, stratigraphic and petrological observations, we re-interpret its former structural segmentation and partitioning in different Alpine tectonic units. Through the (i) restoration of the meta-ophiolite succession, which is characterized by a fossil mantle-sediment interface, and of preserved unconformities within the metasedimentary succession, and the (ii) detection of main structures which define the present-day architecture of the MO, we extended our recent published results (Balestro et al., 2011; 2015b; Festa et al., 2015) to the whole MO, documenting that its Alpine tectonic evolution was strongly influenced by its primary intra-oceanic tectono-sedimentary physiography. The latter was inherited from the Late Jurassic oceanic core complex formed during extensional tectonics in a slow-spreading system related to the opening of the Ligurian-Piedmont ocean basin (Alpine Tethys). We provide new data to further discuss the role played by the occurrence of a Late Jurassic intra-oceanic “detachment fault” (see “Baracun Shear Zone” in Festa et al., 2015) in the Cenozoic Alpine evolution of the MO.

Our data and observations from the MO indicate that apparently incomplete and highly deformed meta-ophiolite sequences that are juxtaposed across major shear zones in high-pressure belts around the world, may not exclusively represent the product of subduction-related deformation. The distribution and orientation of sea-floor spreading structural inheritances with respect to the orientation of the strain field related to subsequent subduction and collisional stages may, in fact, play a significant role in controlling the propagation of subsequent tectonic deformation, isolating and preserving remnants of the pre-orogenic tectono-stratigraphic architecture of oceanic basins, and thus providing complementary data to better constrain paleogeographic reconstructions.

2. Regional geological setting of the Western Alps and the Monviso Ophiolite

The Western Alps (Fig.1) resulted from the convergence of the Adria upper plate and the European lower plate with the interposed Ligurian – Piedmont oceanic basin (i.e., the Alpine Tethys; see e.g. Coward and Dietrich 1989), which developed as a result of Middle to Late-Jurassic rift-drift and seafloor spreading (e.g., Lemoine et al., 1986; Michard et al., 1996; Vissers et al., 2013). The present-day setting of Western Alps consists of a double verging collisional belt, along which the collisional zone (i.e. the axial sector of the Alpine belt) involves an exhumed fossil subduction complex overthrusting the European foreland and the Adriatic retroforeland, to the W and E, respectively (e.g., Ricou and Siddans, 1986; Bigi et al., 1990; Polino et al. 1990). Remnants of the Ligurian – Piedmont oceanic basin correspond to different meta-ophiolite units (i.e. the Piedmont Zone; see e.g. Martin et al., 1994; Dal Piaz et al., 2003), which are tectonically sandwiched between European and Adria continental margin units (Fig.1A), and are classically distinguished in eclogite-facies units (i.e., Zermatt-Saas Zone) and blueschist-facies ones (i.e. Combin Zone; see Bearth, 1967).

The MO, is one of the major and better investigated eclogitized remnants of the Ligurian – Piedmont oceanic lithosphere in the Western Alps (Lombardo et al., 1978; Lombardo et al., 2002; Balestro et al., 2013 and reference therein), and is tectonically juxtaposed to the eclogitized Dora Maira Massif, which was part of the European continental margin. A major ductile normal fault (i.e., the West Viso Detachment; Ballèvre et al., 1990; Tricart et al., 2004) separates the MO from the overlying Queyras Schistes Lustrés Complex (Fig.1A). The latter was metamorphosed under blueschist-facies conditions and consists of carbonate-rich metasedimentary rocks with meta-ophiolite bodies (Tricart and Lemoine, 1991; Tricart and Schwartz, 2006). The present-day architecture of the MO resulted from three main tectonic stages (named D1, D2 and D3) developed during (i) the Late Cretaceous to Middle Eocene subduction, (ii) the Late Eocene-Early Oligocene collision and W-verging accretion, and (iii) the Late Oligocene to Neogene westward tilting which was driven by deep crust/mantle indentation and doming of the underlying Dora Maira Massif (Philippot, 1990; Rosembaum and Lister, 2005; Lardeaux et al. 2006; Balestro et al., 2015b). The D1 was coeval to the subduction-related eclogite-facies metamorphism, and is mainly recorded by an early foliation (i.e., the S1).

The S1 overprinted ocean-related structures such as primary stratigraphic surfaces and magmatic foliation (i.e., the S0). The D2 was coeval to the early-exhumation-related blueschist- to greenschist-facies re-equilibration, and was characterized by W-verging non cylindrical folding associated with shearing. D2 folds are tight to isoclinal and developed an axial plane foliation (i.e., the S2), corresponding to the gently to moderately W- to SSW-dipping regional foliation, which is parallel to the lithological contacts within the MO and to the basal tectonic contact with the underlying Dora Maira Massif. The D3 developed during late-exhumation under lower greenschist-facies conditions, and consists of open folds, which accommodated westward-extension along major shear zones (e.g., the contact between the MO and the Queyras Schistes Lustrés Complex). During the D3, as a consequence of doming of the Dora Maira Massif, the D1 and D2 structures were tilted.

The MO consists of serpentinite, metagabbros, metabasalt and metasediments (Compagnoni and Fiora, 1976; Lombardo et al., 1978; MONVISO, 1980). Serpentinite hosts large bodies of Mg-Al metagabbro, with minor bodies of Fe-Ti-oxide metagabbro and very minor metaplagiogranite (Castelli et al., 2002; Castelli and Lombardo, 2007; Compagnoni et al., 2012), which gave Callovian - Oxfordian (163 ± 2 Ma; Rubatto and Hermann, 2003), and Kimmeridgian - Tithonian (152 ± 2 Ma, Lombardo et al. 2002) crystallization ages, respectively. In the northern sector of the MO, Festa et al. (2015) documented the remnants of an intra-oceanic detachment fault (i.e., the Baracun Shear Zone), which separates massive serpentinite and Middle-Upper Jurassic metagabbros in its footwall, from metabasalt and metasediments in its hangingwall. Balestro et al. (2015b) highlighted that those metasediments derived from two different successions, consisting of Upper Jurassic calcschist, interfingering by ophiolite-derived detrital horizons (i.e. the syn-extensional succession), and Lower Cretaceous carbonate-rich calcschist devoid of any ophiolite-derived material (i.e. the post-extensional succession).

Following Lombardo et al. (1978) and MONVISO (1980), which subdivided the central part of the MO in six main tectonic units on the basis of the occurrence of tectonic contacts among different lithologies (Figs. 2A and 2B), different Authors proposed new subdivisions (see Fig. 2C; e.g., Blake et al., 1995; Lombardo et al., 2002; Angiboust et al., 2012). The estimation of different P-T metamorphic peaks for the tectonic units (Fig. 2C; Blake et al., 1995; Messiga et al., 1999; Schwartz et al., 2000; Groppo and Castelli, 2010; Angiboust et al., 2012) allowed the interpretation that different subduction metamorphic histories were documented within the MO. However, the structural “break” separating these different subduction histories was controversially attributed to different tectonic contacts, located in different structural positions (see Fig. 2C).

The inner architecture of the MO is interpreted as either both the product of subduction-related tectonics or collision-related one. For example, Blake and Jayko (1990) and Guillot et al. (2004) interpreted the MO as a fossilized serpentinite subduction channel, wherein eclogite blocks were tectonically incorporated forming a “serpentinite mélange”. Differently, Angiboust et al. (2011) suggested that the MO corresponds to a primary, almost continuous, fragment of upper oceanic lithosphere subducted at about 80 km depth and crosscut by different eclogite-facies shear zones. Finally, Schwartz et al. (2000) proposed that the tectonic juxtaposition of the MO units occurred during collision-related exhumation, under blueschist-facies metamorphic conditions.

3. Tectonostratigraphy and structural architecture

Our geological mapping of the whole MO (1:10,000 scale), and detailed structural and lithostratigraphic observations, allow us to re-interpret the tectono-stratigraphy of the whole MO (Fig. 3).

3.a. The meta-ophiolite sequence

Based on the above-mentioned literature data and original observations, the different lithostratigraphic units of the MO (Fig. 3A) are described in the following, as pertaining to mantle-derived rocks, and syn- to post-extensional sequences (see Balestro et al., 2015b and Festa et al., 2015), where extension is related to the Late Jurassic rifting and seafloor oceanic spreading of the Ligurian – Piedmont oceanic basin.

3.a.1. Mantle rocks and metagabbro sequence

This sequence consists of massive serpentinite and metagabbros. The serpentinite (Fig. 4A) is made of antigorite and magnetite and derives from lherzolite and minor harzburgite. The primary mineral assemblage is preserved as relics of clinopyroxene and orthopyroxene porphyroclasts, and as textural relics of spinel and olivine. Rare relics of bastite and lizardite mesh textures highlight that serpentinitization of peridotite began during oceanization. The uppermost part of the serpentinite is locally characterized by the occurrence of both massive and sheared meta-ophicarbonate (Fig. 4B), which well documents the original exhumation of mantle rocks at the seafloor. The meta-ophicarbonate horizons range from few meters to few tens of meters in thickness (e.g., S of Colle di Luca), and consist of irregular calcite and dolomite vein networks which lace centimeters to decimeters “clasts” of serpentinite. The massive serpentinite and the meta-ophicarbonate horizons pass upward to the mylonitic serpentinite and the talc-chlorite schist of the Baracun Shear Zone (BSZ hereafter; see below).

The metagabbros, which were intruded in the original peridotite, range in size from decimeters dikes (Fig. 4A) and pods to hundreds of meters thick and kilometers long bodies. The latter, although also occurring in the northern (i.e. Colle del Baracun area) and southern (i.e., M. Nebin area) sectors of the MO, are more abundant and continuous between Colle Armoine and NE of Casteldelfino (i.e., the central part of the MO; Fig. 3A). In this sector, depending on both primary tectonostratigraphy and subsequent strain partitioning during Alpine deformation, the metagabbro bodies show different characteristics. Metagabbro occurring ENE of Colle Armoine and between Monviso and P. Caprera, partly preserves its primary intrusive shape and almost show coarse-grained magmatic fabrics, whereas between Pian del Re and Colle di Luca, metagabbro bodies are elongated in shape and their primary fabric is widely overprinted by Alpine deformation and re-crystallization. Particularly, strongly elongated bodies of mylonitic metagabbro (Fig. 4D) occur between N of Cima delle Lobbie and NE of Casteldelfino.

Metagabbros consist of both Mg-Al-rich and Fe-Ti-rich composition, ranging in texture from coarse-grained pegmatitic to prevalent medium-grained foliated (Fig. 4C). The former (Fig. 4C) is prevalent, showing a mineral assemblage characterized by (i) relics of a magmatic pyroxene almost replaced by Cr-omphacite, (ii) rare relics of magmatic chromite and ilmenite, and (iii) textural relics of the original plagioclase replaced by aggregates of clinozoisite and albite. The olivine-metagabbro, occurring between Monviso and P. Caprera, shows a magmatic fabric with pyroxene of chromian-diopside composition and is characterized by levels of cumulate metatroctolite. The Fe-Ti-oxide metagabbro (Fig. 4D) almost occurs within the Mg-Al metagabbro as differentiated pods. It displays a fine-grained banded texture and shows relics of a magmatic pyroxene of augite composition, which are retained in a mineral assemblage mainly consisting of garnet, omphacite and rutile (for details see Balestro et al., 2014).

The metagabbro dykes are almost transformed into rodingite (Fig. 4A), mainly consisting of Mg-chlorite, diopside, vesuvianite and garnet of grossular composition. Some rodingite dikes (e.g., E of Casteldelfino and close to Colle di Sampeyre) are poorly deformed and lack of pervasive metamorphic overprint (Bogatto and Castelli, 1997), highlighting that metasomatism is linked to early oceanic serpentinitization.

A tens of meters thick body of medium-grained metaplagiogranite (152 ± 2 Ma; Lombardo et al., 2002), which occurs NW of Sampeyre, shows well preserved intrusive relationships with Fe-Ti-oxide metagabbro (Fig. 4E). It consists of albite, quartz and jadeite, and is crosscut by albite-quartz-bearing leucocratic dikes (Castelli et al., 2002).

3.a.2. Syn-extensional sequence

This sequence consists of metabasalt (Figs. 4F, 4G and 4H) and metasediments. The former, ranging in thickness from few meters to several hundreds of meters, corresponds to (i) massive aphyric metabasalt, widespread between Monviso and Cima delle Lobbie, (ii) tholeiitic meta- pillow lavas (Fig. 4F) and (iii) brecciated metabasalt (Fig. 4H), grading into volcanoclastic-derived layers. The latter are characterized by a medium-grained banded texture, which is defined by alternating light green-yellow layers, mainly consisting of albite, epidote and clinozoisite, and dark-green layers of prevalent Na-Ca amphibole. Fine-grained dikes of basaltic composition (Fig. 4G), with well-preserved magmatic relationships, occur within metagabbro N and E of Viso Mozzo, and between Monviso and P. Caprera.

The syn-extensional metasediments (see also Lagabrielle, 1994) consist of calcschist interbedded with decimeters to sub-decameters thick horizons of mafic metasandstone and metabreccia (Fig. 4I and 4L). The calcschist is made of calcite, quartz and white mica, and includes aggregates of white mica, zoisite/clinozoisite and graphite, pseudomorphic after lawsonite, and clast-derived mafic to ultramafic aggregates of Mg-chlorite and Cr-rich white mica (for details see Balestro et al., 2014). The interbeds of mafic metasandstone and metabreccia are of gabbroic composition and commonly show a graded texture.

The metabreccia laterally grades, at tens of meters scale, into metasandstone of the same composition. Clasts of metabreccia are sub-angular in shape and up to few centimeters in size (Fig. 4L); they consist of aggregates of omphacite, chlorite, Cr-rich white mica and epidote. In addition to these minerals, the matrix is characterized by the occurrence of quartz and white mica. The thickness of the syn-extensional metasedimentary unit shows significant variations toward both E-W and N-S directions. In the Colle del Baracun, N of Colle Armonie and E of M. Nebin sectors (Fig. 3), it shows an increase in thickness from zero to about 70 meters toward W and away from the underlying talc-chlorite schist of the BSZ (see below).

Although in few sectors (e.g., NW of M. Granero) metasediments, up to few meters thick, are stratigraphically interposed between serpentinite and metabasalt, the direct relationships between the thickest syn-extensional metasediment and metabasalt successions are difficult to observe. However, geological mapping suggests a lateral heteropic contact.

3.a.3. Post-extensional sequence

This sequence is extensively exposed in the southern sector of the MO while, in other sectors it defines narrow horizons, up to few tens of meters thick. It consists of calcschist devoid of any ophiolite-derived detrital material, and characterized by the occurrence of levels of marble and/or quartz-rich schist, centimeters to decimeters in thickness (Figs. 4M, 4N and 4O). The age of this succession, based on a correlation with the similar unmetamorphosed sediments of Northern Apennines, was referred to the Early Cretaceous (Lagabrielle, 1994). The calcschist mainly consists of calcite, ankerite, quartz, white mica and epidote, whereas the quartz-rich schist is made of quartz, white mica and chlorite, with minor albite and garnet. In the Colle del Baracun area, the post-extensional metasediments unconformably overlie both the mantle-derived rocks, syn-extensional sequence and rocks of the BSZ (see below). The characteristics of its basal contact, which lacks of any Alpine mylonitic structure and superposes the post-extensional metasediments onto different lithostratigraphic units, allowed it to be interpreted as a primary unconformity surface (Fig. 4M). The occurrence of quartz-rich schist levels documents a significant terrigenous input into the basin, showing that the post-extensional sequence consists of distal carbonate and mixed siliciclastic-carbonate turbidites sourced from a continental margin area.

3.b. Architecture of the Monviso meta-ophiolite complex

The present-day architecture of the MO (Fig. 3B) mainly results from D2 non-cylindrical folding and from shearing along major shear zones of different ages: (i) the ocean-related BSZ (*sensu* Festa et al., 2015), (ii) the D2-related Granero-Casteldelfino Shear Zone, here defined for the first time, and (iii) the D3-related Villanova-Armoine Shear Zone (Fig. 3A).

D2 folds are W-verging and, because of the subsequent D3-related tilting, are characterized by a recumbent geometry (i.e., synformal anticlines and antiformal synclines). They correspond to kilometric macroscale structures which pervasively folded the above described meta-ophiolite sequence, and are linked with second-order folds occurring at different scales. The core of synformal anticlines consists of serpentinite, whereas the core of antiformal synclines consists of metabasalt and metasediments. The best map evidences of D2 folding are the occurrence, in different sectors of the MO (Fig. 3A), of both syn-extensional and post-extensional metasediments at the top and the bottom (i.e., the overturned ones) of the massive serpentinite (e.g., M. Nebin area), or the occurrence of serpentinite above the metabasalt (e.g., N and S of Colle di Vallanta). Tight to isoclinal D2 folds (Fig. 4O) deform the previous S1-parallel fabric and developed an axial plane foliation (S2). D2 folding is characterized by a strong component of shearing, which is highlighted at the mesoscale by sheath folds (Fig. 4N), and by the occurrence of rootless fold hinges and stretched and boudinated long limbs (Fig. 4C).

3.b.1. The Baracun Shear Zone (BSZ)

The BSZ (Fig. 3A) extends along the whole MO and, because of pervasive D2 folding (Fig. 5A), it occurs at different structural levels, including the highest one (i.e., N of Colle di Vallanta; Fig. 5B). It separates mantle rocks and metagabbros in its footwall, from the syn-extensional sequence (metabasalt and calcschist with mafic intercalations) in its hanging wall. The Lower Cretaceous post-extensional carbonate-rich calcschist, unconformably overlies the BSZ (Fig. 5A) and both the footwall and hanging wall successions, constraining the age of this shear zone to the pre-Early Cretaceous (see Balestro et al., 2015a). The BSZ consists of meters to tens of meters thick talc-chlorite schist and mylonitic serpentinite, embedding blocks of metagabbro (Fig. 5A), decimeters to several meters wide, tectonically wrenched from the footwall mantle-

rocks assemblage. This scale-independent, block-in-matrix fabric (*sensu* Dilek et al., 2012; Festa et al., 2012 and reference therein), is significantly devoid of any material derived from the syn- and post-extensional sequences. The talc-chlorite schist matrix (Fig. 5C) mainly consists of talc, Mg-chlorite and amphibole of tremolite-actinolite composition and, among minor minerals, calcite, magnetite, garnet and apatite occur. The associated mylonitic serpentinite mainly consists of antigorite and magnetite, with minor talc, calcite and crysotile. Blocks of metagabbro are mainly of Fe-Ti-richer composition and consist of omphacite-garnet-and-rutile mineral assemblages, with relics of a magmatic pyroxene of augite composition. The latter locally retains fine inclusions of talc, quartz and, remarkably, Mg-hastingsitic hornblende. Differently from those occurring in the massive serpentinite, these metagabbros do not show rodingitic metasomatic reactions with the embedding talc-chlorite schist and serpentinite matrix. Blocks of metagabbro were elongated during D1-related stretching deformation and subsequently deformed by D2 folds. The external part of some blocks consists of decimeters thick layers of clast-supported metabreccia of tectonic origin (see Balestro et al., 2015b) in which clasts have the same gabbroic compositions of blocks. Observation that the metabreccia is overprinted by S1 foliation and D2 folds at both micro- and meso-scale, constrains brecciation processes before the D1 phase (for details see Festa et al., 2015). At the microscale, the talc-chlorite schist matrix shows pluri-millimeters thick chlorite-rich and talc-rich domains, which correspond to rootless hinges of D2 folds. Although the BSZ is locally overprinted and reactivated (see below) by Alpine-related deformation, these data overall constrain the BSZ development before the D1 subduction-related deformation and metamorphic overprint.

3.b.2. The Granero-Casteldelfino Shear Zone (GCSZ)

The GCSZ (Fig. 3A) is roughly fifteen kilometers long and up to tens of meters thick, and controlled the architecture of the MO. This low angle W- to SW-dipping (i.e., roughly parallel to the S2 foliation) shear zone (Fig. 5D), superposes two overturned successions which consist of metabasalt and post-extensional metasediments in the hanging wall, and either of serpentinite or metagabbro, BSZ-rocks assemblage, metabasalt and both syn- and post-extensional metasediments, in the footwall. The localization of the GCSZ, along rootless hinges and highly stretched long limbs of second-order D2 folds (Fig. 5D), highlights that it accommodated a component of shearing related to W-verging D2 deformation. The displacement along the GCSZ gradually decreases up to zero meters toward both N (i.e., in the M. Granero area) and S (i.e., NE of Casteldelfino), where the shear zone ends within the metabasalt. Remarkably, the evidence that the lateral terminations of the GCSZ roughly corresponds to the lateral termination of the narrow horizons of post-extensional metasediments, which mark at the base its hangingwall, suggests that shearing was controlled by rheological contrast between those metasediments and the footwall rocks.

At the mesoscale, the GCSZ is defined by centimeters thick shear zones displaying a mylonitic foliation, which is roughly parallel to the S2. These shear zones particularly developed along talc-chlorite schist, mylonitic serpentinite (Fig. 5E) and post-extensional calcschist with levels of marble and quartz-rich schist (Fig. 5F). In these metasediments, the mylonitic fabric almost overprinted the primary compositional banding. Also the metagabbro occurring in the footwall of the GCSZ (e.g., the metagabbro between N of Cima delle Lobbie and NE of Casteldefino), displays a mylonitic fabric (Fig. 4D). Where the mylonitic foliation and the S2 are not parallelized, the shear zone shows an orientation at low angle to the S2. The mylonitic foliation generally shows shallow dips to the SW and stretching lineations gently plunging to the SSW. The shear zone usually exhibits sinistral sense of shear and structural associations (i.e., S-C structures) consistent with top to SW kinematics (i.e., consistent with the W-verging D2 folds).

3.b.3. The Villanova-Armoine Shear Zone (VASZ)

The VASZ (Fig. 3A) corresponds to a few meters thick, W-dipping, extensional shear zone, which displaces of about few hundreds of meters both the whole meta-ophiolite sequence and the D2-related structural architecture of the northern sector of the MO. It represents the most persistent D3 structure occurring in the MO and it is well defined by the gradual steepening of the S2 foliation and of the S2-parallel lithological contacts. The VASZ extends for about ten kilometers between the Villanova area and Colle Armoine, and, in different sectors, it juxtaposes metabasalt, rocks of the BSZ and narrow massive serpentinite, in the hanging wall, to metabasalt and syn- and post-extensional metasediments, in the footwall (Fig. 5G). It is structurally associated with the D3 tectonic contact which separates the MO and the overlying Queyras Schistes Lustrès Complex. At the mesoscale, D3 deformation consists of widespread fracture cleavages (Fig. 4H) and extensional shear planes (Fig. 5C), millimeters to centimeters thick and centimeters- to meters-spaced, which are often associated with W-verging open folds (i.e., the D3 folding). These structures mainly developed

within post-extensional metasediments, which are locally severely reworked by shearing-related deformation. Where they are absent (i.e., N of Colle del Baracun), shearing is localized along rocks of the BSZ (Fig. 5C). Both shear planes and related slickenslide lineations dip moderately to the W. Normal sense of shear is defined by S-C structures.

4. Discussion

Our description of the tectono-stratigraphic architecture of the MO allows (i) to discriminate between inherited intra-oceanic structures and Alpine ones, and (ii) to understand the role of those inherited structures in controlling the Alpine tectonic evolution of the MO. The addition of these new observations to our published data (Balestro et al., 2015b, Festa et al., 2015), allow us to describe in detail the complete tectonic evolution of MO from the Late Jurassic seafloor spreading, to subduction, continental collision and exhumation stages.

4.a. Tectonic evolution of the MO and role of inherited structures

An intra-oceanic tectonic stage and three Alpine-related ones can be differentiated in the evolution of the MO (Fig. 6).

4.a.1. Seafloor spreading stage and oceanic core complex development

The early seafloor spreading stage coincided with the production of magma by decompressional melting of the asthenosphere during its slow upwelling. This process led to the intrusion of gabbroic dikes and plutons in an upper mantle, consisting of lherzolite with minor harzburgite. Intrusions mainly consisted of Mg-Al gabbro with differentiated pods of Fe-Ti-richer composition, which crystallized in the upper Middle Jurassic (i.e., 163 ± 2 Ma; Rubatto and Hermann, 2003), and minor Upper Jurassic plagiogranite (152 ± 2 Ma; Lombardo et al. 2002). Exhumation at the seafloor of both gabbro and serpentinized peridotite is highlighted by the occurrence of (i) meta-ophicarbonate at the top of the massive serpentinite, (ii) stratigraphic contacts between syn-extensional/post-extensional metasediments and massive serpentinite, and (iii) intercalations of gabbroic detrital material within the syn-extensional metasediments. This exhumation was driven by the BSZ (Fig. 6A), whose composition and tectonostratigraphic relationships document that it corresponds to an intra-oceanic detachment fault and cannot be interpreted as a subduction-related “serpentinite mélange” as suggested by some Authors (Blake and Jayko, 1990).

The BSZ controlled seafloor spreading and extensional tectonics by simple shear (Festa et al., 2015); this produced a Late Jurassic oceanic core complex (OCC; see Fig 6A). The development of the BSZ was promoted by early intrusion of gabbroic bodies and by later serpentinization-related rheological weakening, which was coeval with intrusion of differentiated gabbroic bodies. Continued faulting and related temperature decrease as the footwall was exhumed, developed the BSZ as a narrow deformation band. When faulting reached a relatively shallow depth (1-3 km), percolation of seawater down the fault may have induced the hydration of mantle rocks along the shear zone, producing serpentinite and hydrothermal metasomatism which formed talc- chlorite schist (Balestro et al., 2015b). The latter is well comparable with those observed in hydrothermally metasomatized oceanic rocks along detachment fault zone in the Middle Atlantic Ridge (Mével, 2003; Boschi et al., 2006) where these rocks are documented to represent weak and highly mobile horizons (e.g., Moore and Lockner, 2007), able to migrate for long distances along faults and lubricating them (Byrelee and Brace, 1968; Dengo and Logan, 1981; Hirauchi, 2006a, 2006b; Dick et al., 2008). In present-day oceanic core complexes, the highly deformed peridotite and talc-chlorite schist associated with detachment faults, commonly entrain high-temperature mylonite blocks, produced during the earliest stage of fault nucleation, and localized igneous intrusion. Similarly, the BSZ embeds blocks of differentiated metagabbro which are mainly of Fe-Ti-richer composition and locally retain relics of hornblende which testify the occurrence of ocean-related medium-T metamorphism, as also documented by Rubatto and Angiboust (2015). Differently from those occurring in the massive footwall serpentinite, these metagabbro blocks do not show rodingitic reactions with the hosting rocks (i.e., the talc-chlorite and serpentinite schists), highlighting that original peridotite was already serpentinized at the time of intrusion. The occurrence of tectonic metabreccia in the external part of some metagabbro blocks of the BSZ indicates that this gabbro was exposed along the BSZ, crosscut and fragmented by brittle faults at shallow structural levels (1-2 km depth). The time constrains for the seafloor spreading stage and oceanic core complex

development is provided by the unconformable deposition of Lower Cretaceous post-extensional calcschist (Festa et al., 2015; Tartarotti et al., 2017; see Fig. 6A). Therefore the extensional stage took place between middle Callovian – early Oxfordian (163±2 Ma) and middle Kimmeridgian – early Tithonian (152±2 Ma).

4.a.2. Alpine-related tectonic stages

The widespread preserved oceanic tectono-stratigraphy highlights that, during convergence-related tectonics (i.e., the D1 stage), the MO was subducted and detached from the main slab as a coherent slice of oceanic lithosphere, few kilometers thick (Fig. 6B). The whole meta-ophiolite sequence was metamorphosed and sheared under eclogite-facies conditions but not tectonically dismembered in different units or eclogitic blocks in a serpentinite matrix, forming a *mélange* (i.e., the serpentinite channel of Guillot et al., 2004). The absence of metasediments younger than the Early Cretaceous, suggests that they may have been tectonically delaminated and/or detached at shallow structural levels during the earlier stage of subduction (i.e., Late Cretaceous), without being buried at deeper structural levels along the subduction thrust interface. If compared with the Ligurian Units in the Northern Apennines, which correspond to the non-metamorphosed succession deposited in the Ligurian – Piedmont oceanic basin (e.g., Marroni et al., 2010; Festa et al., 2013 and reference therein), it is possible to suggest that also in the MO the stratigraphic base of the Upper Cretaceous successions may have acted as a regional-scale detachment level, separating units which were differently (or only in part) involved in the subduction processes.

The occurrence of remnants of an intra-oceanic detachment fault (i.e., the BSZ) and of the related syn-extensional sequence, which are sealed by the Lower Cretaceous post-extensional sequence, highlights that the BSZ was not significantly reactivated during D1 tectonics (Fig. 6B), suggesting that possibly it was not favorably oriented with respect to orientation of the strain field during subduction. Although primary stratigraphic surfaces (e.g., the S0 sedimentary bedding) were overprinted by the early S1 foliation, the tectono-stratigraphic relationships between primary lithostratigraphic units were mostly preserved (Fig. 6B), and the development of the S1 was almost only associated with stretching and boudinage of the meta-ophiolite sequence. The best preserved D1 structures occur at the meso- and micro-scale. D1 stretching is defined by elongated blocks of metagabbro within the BSZ (Balestro et al., 2015b), whereas boudinage is well-highlighted by pinch-and-swell structures and eclogite-facies veining within layered metagabbro (Philippot and Kienast, 1989). These veins consist of tension gashes and shear fractures filled by omphacite, garnet and rutile, and formed by locally sourced fluids at the peak of the prograde metamorphic path of the MO (Nadeau et al., 1993; Spandler et al., 2011).

The subsequent D2 deformation records the continental collisional stage (Fig. 6C), which developed during early exhumation-related metamorphic re-equilibration in the epidote-blueschist to greenschist-facies transition (Schwartz et al., 2000; Balestro et al., 2014). This deformational stage played a primary role in forming the present-day structural architecture of the MO (Fig. 6C). D2 folds occur at all scales and developed a pervasive axial plane foliation (i.e., the S2), which is parallel to the lithological contacts. At the macro-scale, W-verging non-cylindrical D2 folds deformed the inherited tectono-stratigraphic setting, forming structures which correspond to present-day synformal anticlines and antiformal synclines (Fig. 6C). Remarkably, the inherited tectono-stratigraphic setting did not corresponded to a flat and regular multilayer of mantle rocks, gabbros and overlying sedimentary covers but was characterized by an heterogeneous tectono-stratigraphic sequence with lateral and vertical variations of both facies and thickness controlled by intra-oceanic faults (i.e., the BSZ), which strongly controlled D2 folding (Fig. 6C).

Due to strain partitioning, as well as differential strength and viscosity of rocks, some of metagabbro and massive metabasalt (e.g., the metabasalt occurring in the core of the antiformal syncline) were preserved from the pervasive D2 deformation, while metasediments and schists of the BSZ were severely deformed. Particularly, the BSZ represented a weak horizon along which highest degree of D2-related shearing and folding was concentrated, producing mylonitic fabric in the talc-chlorite and serpentine schists (Fig. 6C). The occurrence of these mylonites at different structural levels was recognized as Alpine-related tectonic contacts (Lombardo et al., 1978) and led to the distinction of different tectono-metamorphic units in central sector of the MO (Schwartz et al., 2000; Guillot et al., 2004). Nevertheless, P-T peaks estimations across the BSZ are very similar (compare, e.g., Groppo and Castelli, 2010; Angiboust et al., 2012, and Balestro et al., 2014) and meaningful metamorphic gaps do not occur. Detection of tectonic structures and their relationships with primary lithostratigraphic units at the scale of the whole MO, highlights that the BSZ occurs at different

structural levels only because of D2 folding and did not acquired a significant displacement during subduction and collisional stages.

D2 non-cylindrical folding accommodated a significant component of tectonic shearing. At the macro-scale, the most important D2 shearing structure corresponds to the GCSZ, along which the meta-ophiolite sequence was detached ([Fig. 6C](#)), and the hanging wall unit (i.e., metabasalt and post-extensional metasediments) was juxtaposed to the footwall one (i.e., serpentinite, BSZ-rocks and metabasalt). Mesoscale structural observations suggest that the detachment enucleated along hinges and long limbs of second-order D2 folds. Within the folded meta-ophiolite sequence, two lithological units, corresponding to the post-extensional metasediments and the schists of the BSZ, acted as preferred sites for concentration and propagation of deformation ([Fig. 6C](#)). The post-extensional carbonate-rich calcschist in the hanging wall was severely stretched and now consists of a narrow zone, suggesting that the rheology of those metasediments controlled the localization and propagation of shearing associated with D2 non-cylindrical sheath folding. Notably, the gradual decrease of displacement up to zero meters of the GCSZ toward both N and S ([Fig. 3A](#)) contrasts with its supposed role in juxtaposing two different tectono-metamorphic units (i.e., the Upper Shear Zone of [Angiboust et al., 2012](#)). The possible interpretation of the GCSZ as a scissor fault accommodating local tearing within the subducted mantle is also to be excluded because of the stratigraphical constraints, which show that roughly the same lithostratigraphic units are juxtaposed along both its hanging wall and footwall. Our new constraints about the GCSZ highlight that it should be interpreted as a D2-related tectonic contact, as also suggested by [Schwartz et al. \(2000\)](#) and [Balestro et al. \(2013\)](#). Although out of the aim of this paper, the different T peaks estimated by [Angiboust et al. \(2012\)](#) in the hanging wall (T peak of 480-500°C) and in the footwall (T peak of 530-550°C) of the GCSZ can be explained by considering that, after subduction, early exhumation of the MO was characterized by a strong decompression and a moderate cooling. [Balestro et al. \(2014\)](#) documented, in fact, that in metasedimentary rocks, occurring close to the tectonic contact with the overlying Queyras Schistes Lustrès Complex, the blueschist- to greenschist-facies metamorphic assemblage is characterized by T of 500°, which is a value very similar to those calculated from metasediments sampled in the hanging wall of the GCSZ. Remarkably, metabasalt sampled away from the shear zone in the hanging wall, gave higher T peak ($T=510\pm30^{\circ}\text{C}$; [Blake et al., 1995](#)). The resulted lowest T values from rocks sampled along the GCSZ are, however, an important point of discussion, which would suggest that a specific study about heat transfer across the shear zone and within rocks with different hydromechanical behavior is needed. As a matter of fact, during continental collision the increase (and decrease) of temperature (and pressure) commonly occurs along significant shear zones which developed in mechanically heterogeneous sequences (see e.g., [Reuber et al., 2016](#); [Li et al., 2010, 2014](#)). Comparison of available P-T estimates (see [Angiboust et al., 2012](#) with ref., their Fig. 9) for the eclogite-facies, peak stage in the MO shows that the estimated P-T values are very similar as stated earlier, and differences could be partially related to different approaches used in the calculation.

The D1 and D2 deformation stages were followed by the D3 deformation developed during late exhumation of the MO, under lower greenschist-facies conditions ([Fig. 6D](#)). Folding and shearing occurred in relation to the doming of the underlying Dora Maira Massif, which was driven by deep crust/mantle indentation ([Lardeaux et al., 2006](#)). This doming caused the progressive westward tilting of the previous D1+D2 architecture ([Fig. 6D](#)). W-verging D3 folds developed in the footwall of new formed extensional shear zones. The main D3 structure corresponds to the VASZ, which crosscut the meta-ophiolite sequence and the D2-related structural architecture in the northern sector of the MO ([Fig. 6D](#)). It is an extensional shear zone that, similarly to the GCSZ, developed along weak lithological contacts such as horizons of different composition and rheology occurring within both the post-extensional metasediments and the BSZ. The VASZ is structurally associated with the tectonic contact which separates the MO from the overlying Queyras Schistes Lustrès Complex (i.e. the West Viso Detachment; [Ballèvre et al., 1990](#); [Tricart et al., 2004](#)). This tectonic contact is localized along a structural level which corresponds to the overturned limb of the first-order D2 antiformal syncline, and consists of talc- chlorite schist (i.e., the BSZ) and syn-extensional metasediments resting above metabasalt. Even along macroscale structures that bound the MO, concentration and propagation of deformation are controlled by the inherited intra-oceanic tectono-stratigraphic architecture and related occurrence of weak rocks.

5. Conclusions

Although subducted up to eclogite-facies metamorphic conditions, the MO represents a well preserved continuous fragment of upper oceanic lithosphere and related Upper Jurassic – Lower Cretaceous sedimentary covers, which significantly records the evolution of an oceanic core complex formed by mantle exhumation along an intra-oceanic detachment fault (i.e., the BSZ). The documented Late Jurassic irregular physiography of this sector of the Ligurian – Piedmont basin ocean, which is well comparable with those observed in oceanic core complexes documented along the slow- (Atlantis Massif, Mid-Atlantic Ridge – MAR) and ultraslow-spreading (Atlantis Bank, Southern Indian Ridge – SWIR) ridges (e.g., Cannat, 1993; Tucholke et al., 1998; Boschi et al., 2006; Karson et al., 2006; Dick et al., 2008; Miranda and Dilek, 2010), strongly influenced subduction- and exhumation-related Alpine tectonics up to the present day structural setting of the MO.

Although strongly deformed during the different Alpine stages, the MO was not completely dismembered into different tectonic or tectono-metamorphic units as suggested in previous interpretations. The occurrence of remnants of an intra-oceanic Jurassic detachment fault (the BSZ), sealed by the Lower Cretaceous post-extensional sequence, highlights that the BSZ was not significantly reactivated during subduction-related Alpine stage (D1-related deformation) probably because not favorably oriented with respect to the orientation of the strain field. Conversely, the GCSZ represents a D2-related tectonic contact, developed during the continental collision stage (D2) along a particular detachment level enucleated along the long limb of macro-scale D2 folds, conditioned by the inherited heterogeneous Upper Jurassic – Lower Cretaceous tectono-stratigraphic physiography of the Ligurian – Piedmont oceanic basin. Its gradual decreases in displacement up to zero toward both N and S and the juxtaposition of the same lithostratigraphic units along both its hanging wall and footwall, invalidate the former inferred role of the GCSZ in juxtaposing two different tectono-metamorphic units recording different subduction histories.

Our findings show that recognizing inherited ocean-related architectures represents a key factor which is useful for reconstructing the whole tectonic evolution of meta-ophiolite units in orogenic belts. Our results demonstrate the importance to carry out multidisciplinary analytical studies (e.g., structural, stratigraphic, petrological) on detailed geological maps, to fully understand the present-day architecture and the tectono-metamorphic evolution of exhumed orogenic belts, and thus to better constrain paleogeographic reconstructions.

Acknowledgements

This paper is dedicated to the memory of Bruno Lombardo who contributed greatly to advancement of geological knowledge of the Monviso meta-ophiolite Complex. We thank Editor G. Capponi for his careful editorial handling, and we would like to express our sincere thanks to the two anonymous reviewers for their constructive and thorough reviews, from which we have benefited greatly in revising our manuscript. Research has been supported by the Italian Ministry of University and Research (Cofin-PRIN 2010/2011 “GEOPROB – GEodynamic Processes of Oceanic Basins” grant no. [2010AZR98L_002] to AF, and grant no. [2010AZR98L_008] to PT); and by the University of Torino (Ricerca Locale “ex 60%–2014-2015”, Università degli Studi di Torino, to GB).

References

- ANGIBOUST, S., AGARD, P., RAIMBOURGH, H., YAMATO, P. & HUET, B. 2011. Subduction interface processes recorded by eclogite-facies shear zones (Monviso, W. Alps). *Lithos* **127**, 222–238.
- ANGIBOUST, S., LANGDON, R., AGARD, P., WATERS, D. & CHOPIN, C. 2012. Eclogitization of the Monviso ophiolite (W. Alps) and implications on subduction dynamics. *Journal of Metamorphic Geology* **30**, 37–61.

- BALESTRO, G., FESTA, A., DILEK, Y. & TARTAROTTI, P. 2015a. Pre-Alpine extensional tectonics of a peridotite-localized oceanic core complex in the late Jurassic, high-pressure Monviso ophiolite (Western Alps). *Episodes* **38** (4), 266–282, <http://dx.doi.org/10.18814/epiiugs/2015/v38i4/82421>.
- BALESTRO, G., FESTA, A. & TARTAROTTI, P. 2015b. Tectonic significance of different block-in matrix structures in exhumed convergent plate margins: examples from oceanic and continental HP rocks in Inner Western Alps (northwest Italy). *International Geology Review* **57** (5–8), 581–605.
- BALESTRO, G., FIORASO, G. & LOMBARDO, B. 2011. Geological map of the upper Pellice Valley (Italian Western Alps). *Journal of Maps* **2011**, 634–654. DOI: 10.4113/JOM.2011.1213.
- BALESTRO, G., FIORASO, G. & LOMBARDO, B. 2013. Geological map of the Monviso massif (Western Alps). *Journal of Maps* **9** (4), 623–634. doi: 10.1080/17445647.2013.842507.
- BALESTRO, G., LOMBARDO, B., VAGGELLI, G., BORGHINI, A., FESTA, A. & GATTIGLIO, M. 2014. Tectonostratigraphy of the northern Monviso meta-ophiolite complex (Western Alps). *Italian Journal of Geosciences* **133** (3), 409–426. <http://dx.doi.org/10.3301/IJG.2014.13>.
- BALLÈVRE, M., LAGABRIELLE Y. & MERLE O. 1990. Tertiary ductile normal faulting as a consequence of lithospheric stacking in the western Alps. *Mémoire Société géologique de France* **156**, 227–236.
- BEARTH, P. 1967. Die Ophiolithe der Zone von Zermatt-Saas Fee. *Beiträge zur Geologischen Karte der Schweiz, Neue Folge* **132**, 130 pp.
- BIGI, G., CASTELLARIN, A., COLI, M., DAL PIAZ, G.V., SARTORI, R., SCANDONE, P. & VAI, G.B. 1990. Structural Model of Italy, sheets 1-2. CNR, *Progetto Finalizzato Geodinamica, SELCA Firenze*
- BLAKE, M.C., JR. & JAYKO, A.S. 1990. Uplift of very high-pressure rocks in the western Alps: evidence for structural attenuation along low-angle faults. *Mémoire Société géologique de France* **156**, 237–246.
- BLAKE, M.C., MOORE, D.E. & JAYKO, A.S. 1995. The role of serpentinite melanges in the unroofing of ultrahigh-pressure metamorphic rocks: An example from the Western Alps in Italy. In *Ultrahigh pressure metamorphism* (eds. R.G. Coleman & X. Wang), pp. 182–205, Cambridge University Press, Cambridge.
- BOGATTO, S. & CASTELLI, D. 1997. Primary and coronitic to metasomatic mineral assemblages in rodingitic Mg-, Cr- and Fe-Ti gabbros from the Monviso ophiolite (Val Varaita, Italian Western Alps). *Quaderni di Geodinamica Alpina e Quaternaria* **4**, 160–161.
- BOSCHI, C., BONATTI, E., LIGI, M., BRUNELLI, D., CIPRIANI, A., DALLAI, L., D'ORAZIO, M., FRÜH-GREEN, G.L., TONARINI, S., BARNES, J.D. & BEDINI, R.M. 2013. Serpentinization of mantle peridotites along an uplifted lithospheric section, Mid Atlantic Ridge at 11° N. *Lithos* **178**, 3–23
- BOSCHI, C., FRÜH-GREEN, G.L. & DELACOUR, A. 2006. Mass transfer and fluid flow during detachment faulting and development of an oceanic core complex, Atlantis Massif (MAR 30°N). *Geochemistry, Geophysics, Geosystems* **7**, doi: 10.1029/2005GC001074.
- BYERLEE, J. D. & BRACE, W.F. 1968. Stick slip, stable sliding, and earthquakes; effect of rock type, pressure, strain rate, and stiffness. *Journal of Geophysical Research* **73**, 6031–6037.
- CANNAT, M. 1993. Emplacement of mantle rocks in the seafloor at Mid-Ocean ridge. *Journal of Geophysical Research* **98**, B3, 4163–4172.
- CASTELLI, D., ROSTAGNO, C. & LOMBARDO, B. 2002. Jd-Qtz-bearing metaplagiogranite from the Monviso meta-ophiolite (Western Alps). *Ophioliti* **27** (2), 81–90.

- CASTELLI, D. & LOMBARDO, B. 2007. The plagiogranite – FeTi-oxide gabbro association of Verné (Monviso metamorphic ophiolite, western Alps). *Ophioliti* **32**, 1-14.
- COMPAGNONI, R. & FIORA, L. 1976. Sopra una sequenza ofiolitica metamorfica di ultramafiti, gabbri con layering magmatico e basalti a pillow nel Massiccio del M. Viso (Alpi Occidentali). *Rendiconti Società Italiana di Mineralogia e Petrologia* **32**, 699-714.
- COMPAGNONI, R., ROLFO, F. & CASTELLI, D. 2012. Jadeitite from the Monviso meta-ophiolite, western Alps: occurrence and genesis. *European Journal of Mineralogy* **24**, 333-343.
- COWARD, M.P. & DIETRICH, D. 1989. Alpine tectonics—an overview. In *Alpine tectonics* (eds. M.P. Coward, D. Dietrich & R.G. Park), pp. 1–29. *Geological Society of London Special Publications* **45**. doi:10.1144/GSL.SP.1989.045.01.01
- DAL PIAZ, G.V., BISTACCHI, A. & MASSIRONI, M. 2003. Geological outline of the Alps. *Episodes* **26**, 175–180.
- DENGO, C. A. & LOGAN, J. M. 1981. Implications of the mechanical and frictional behavior of serpentinite to seismogenic faulting. *Journal of Geophysical Research* **86**, 10771–10782.
- DEWEY, J. & SPALL, H. 1975. Pre-Mesozoic plate tectonics: how far back in Earth history can the Wilson Cycle be extended? *Geology* **3**, 422–424.
- DICK, H.J.B., TIVEY, M.A. & TUCHOLKE, B.E. 2008. Plutonic foundation of a slow-spreading ridge segment: Oceanic core complex at Kane Megamullion, 23_300N, 45_200W. *Geochemistry, Geophysics, Geosystems* **9**, Q05014, doi:10.1029/2007GC001645.
- DILEK, Y., FESTA, A., OGAWA, Y. & PINI, G.A., 2012. Chaos and geodynamics: mélanges, mélange-forming processes and their significance in the geological record. *Tectonophysics* **568–569**, 1–6, <http://dx.doi.org/10.1016/j.tecto.2012.08.002>.
- DUNBAR, J.A. & SAWYER, D.S. 1989. How preexisting weaknesses control the style of continental breakup. *Journal of Geophysical Research* **94** (B6), 7278–7292.
- ESCARTIN, J., SMITH, D.K., CANN, J., SCHOUTEN, H., LANGMUIR, C.H. & ESCRIG, S. 2008. Central role of detachment faults in accretion of slowspread oceanic lithosphere. *Nature* **455**, 790–794. doi:10.1038/nature07333.
- FESTA, A., BALESTRO, G., DILEK, Y. & TARTAROTTI, P. 2015. A Jurassic oceanic core complex in the high-pressure Monviso ophiolite (western Alps, NW Italy). *Lithosphere* **7**, 646–652. <http://dx.doi.org/10.1130/L458.1>.
- FESTA, A., DILEK, Y., CODEGONE, G., CAVAGNA, S. & PINI, G.A. 2013. Structural anatomy of the Ligurian accretionary wedge (Monferrato, NW-Italy), and evolution of superposed mélanges. *Geological Society of America Bulletin* **125**, 1580-1598. Doi: 10.1130/B30847.1.
- FESTA, A., DILEK, Y., PINI, G.A., CODEGONE, G. & OGATA, K. 2012. Mechanisms and processes of stratal disruption and mixing in the development of mélanges and broken formations: redefining and classifying mélanges. *Tectonophysics* **568–569**, 7–24, <http://dx.doi.org/10.1016/j.tecto.2012.05.021>.
- GROPPO, C. & CASTELLI, D. 2010. Prograde P–T evolution of a lawsonite eclogite from the Monviso Meta-ophiolite (Western Alps): Dehydration and redox reactions during subduction of oceanic FeTi-oxide gabbro. *Journal of Petrology* **51**, 2489–2514. doi:10.1093/petrology/egq065.

- GUILLOT S., SCHWARTZ S., HATTORI K., AUZENDE A. & LARDEAUX J. 2004. The Monviso ophiolitic Massif (Western Alps), a section through a serpentinite subduction channel. In *Evolution of the western Alps: insights from metamorphism, structural geology, tectonics and geochronology* (eds. M. Beltrando, G. Lister, J. Ganne & A. Boullier). *Journal of the Virtual Explorer* **16**.
- GURNIS, M., HALL, C. & LAVIER, L. 2004. Evolving force balance during incipient subduction. *Geochemistry, Geophysics, Geosystems* **5**, Q07001, doi: 10.1029/2003GC000681.
- HALL, C. E., GURNIS, M., SDROLIAS, M., LAVIER, L.L. & MULLER, R.D. 2003. Catastrophic initiation of subduction following forced convergence across fracture zones. *Earth and Planetary Science Letters* **212**, 15–30.
- HIRAUCHI, K. 2006a. Identification of tectonically controlled serpentinite intrusion: Examples from Franciscan serpentinites, Gorda, California. *Eos Transactions* **87**(52), Fall Meeting Supplement, Abstract T31C–0463.
- HIRAUCHI, K. 2006b. Serpentinite textural evolution related to tectonically controlled solid-state intrusion along the Kurosegawa Belt, northwestern Kanto Mountains, central Japan. *Island Arc* **15**, 156–164.
- KARSON J.A., FRUH-GREEN, G.L., KELLEY, D.S., WILLIAMS, E.A., YOERGER, D.R. & JAKUBA, M. 2006. Detachment shear zone of the Atlantis Massif core complex, Mid-Atlantic Ridge, 30°N: *Geochemistry, Geophysics, Geosystems* **7**(6), Q06016, doi: 10.1029/2005GC001109.
- LAGABRIELLE, Y. 1994. Ophiolites of the southwestern Alps and the structure of the Tethyan oceanic lithosphere. *Ophioliti* **19**, 413–434.
- LARDEAUX, J., SCHWARTZ, S., TRICART, P., PAUL, A., GUILLOT, S., BÉTHOUX, N. & MASSON, F. 2006. A crustal-scale crosssection of the south-western Alps combining geophysical and geological imagery. *Terra Nova* **18** (6), 412–422.
- LEMOINE, M., BAS, T., ARNAUD-VANNEAU, A., ARNAUD, H., DUMONT, T., GIDON, M., GRACIANSKY, P.C. DE, RUDKIEWICZ, J.L., MÉGARD-GALLI, J. & TRICART, P. 1986. The continental margin of the Mesozoic Tethys in the Western Alps. *Marine and Petroleum Geology* **3**, 179–199.
- LENG, W. & GURNIS, M. 2011. Dynamics of subduction initiation with different evolutionary pathways. *Geochemistry, Geophysics, Geosystems* **12**, Q12018, doi:10.1029/2011GC003877.
- LI, Z.H., 2014. A review of the numerical geodynamic modeling of continental subduction, collision and exhumation. *Science China – Earth Sciences* **57** (1), 47–69, doi: 10.1007/s11430-013-4696-0
- LI, Z.H., GERYA, T.V. & BURG, J.-P. 2010. Influence of tectonic overpressure on P-T paths of HP-UHP rocks in continental collision zones: Thermomechanical modelling. *Journal of Metamorphic Geology* **28**, 227–247, doi: 10.1111/j.1525-1314.2009.00864.x.
- LOMBARDO, B., NERVO, R., COMPAGNONI, R., MESSIGA, B., KIENAST, J., MEVEL, C., FIORA, L., PICCARDO, G. & LANZA, R. 1978. Osservazioni preliminari sulle ofioliti metamorfiche del Monviso (Alpi Occidentali). *Rendiconti Società Italiana di Mineralogia e Petrologia* **34**, 253–305.
- LOMBARDO, B., RUBATTO, D. & CASTELLI, D. 2002. Ion microprobe U–Pb dating of zircon from a Monviso metaplagiogranite: Implications for the evolution of the Piedmont-Liguria Tethys in the Western Alps. *Ophioliti* **27**, 109–117.
- MAFFIONE, M., THIEULOT, C., VAN HINSBERGEN, D.J.J., MORRIS, A., PLUMPER, O. & SPAKMAN, W. 2015. Dynamics of intraoceanic subduction initiation: 1. Oceanic detachment fault inversion and the formation of supra-subduction zone ophiolites. *Geochemistry, Geophysics, Geosystems* **16**, doi:10.1002/2015GC005746.

- MARRONI, M., MENEGHINI, F. & PANDOLFI, L. 2010. Anatomy of the Ligure-Piemontese subduction system: evidence from Late Cretaceous-middle Eocene convergent margin deposits in the Northern Apennines, Italy. *International Geology Review* **52**, 1160-1192.
- MARTIN, S., TARTAROTTI, P. & DAL PIAZ, G.V. 1994. The Mesozoic ophiolites of the Alps: a review. *Bollettino di Geofisica Teorica e Applicata* **36**, 175-219.
- MESSIGA, B., KIENAST, J.R., REBAY, G., RICCARDI, M.P. & TRIBUZIO, R. 1999. Cr-rich magnesiochloritoid eclogites from the Monviso ophiolites (Western Alps, Italy). *Journal of Metamorphic Geology* **17**, 287-299.
- MÉVEL, C. 2003. Serpentinization of abyssal peridotite at mid-ocean ridges. *Comptes Rendus Geoscience* **335**, 825-852.
- MICHARD, A., GOFFE, B., CHOPIN, C. & HENRY, C. 1996. Did the Western Alps develop through an Oman-type stage? The geotectonic setting of high-pressure metamorphism in two contrasting Tethyan transects. *Eclogae Geologicae Helvetiae* **89**, 43- 80.
- MIRANDA, E.A. & DILEK, Y. 2010. Oceanic core complex development in modern and ancient oceanic lithosphere: Gabbro-localized versus peridotite-localized detachment models. *Journal of Geology* **118**, 95-109, DOI: 10.1086/648460.
- MONVISO, 1980. The Monviso ophiolite complex. In: A. Panayiotou (Ed.), Ophiolites, Proceed. Intern. Ophiolite Symp. Geol. Survey Dept., Nicosia, Cyprus, p. 332-340.
- MOORE, D. E. & LOCKNER, D.A., 2007. Comparative deformation behavior of minerals in serpentinized ultramafic rock: Application to the slab-mantle interface in subduction zones. *International Geology Review* **49**, 401-415.
- NADEAU, S., PHILIPPOT, P. & PINEAU, F. 1993. Fluid inclusion and mineral isotopic compositions (HCO) in eclogitic rocks as tracers of local fluid migration during high-pressure metamorphism. *Earth and Planetary Science Letters* **114**(4), 431-448.
- PETERSEN, K.D. & SCHIFFER, C. 2016. Wilson cycle passive margins: Control of orogenic inheritance on continental breakup. *Gondwana Research* **39**, 131-144.
- PIQUÉ, A. & LAVILLE, E. 1996. The central Atlantic rifting: reactivation of Palaeozoic structures? *Journal of Geodynamics* **21**, 235-255.
- PHILIPPOT, P. 1990. Opposite vergence of nappes and crustal extension in the French-Italian Western Alps. *Tectonics* **9** (5), 1143-1164.
- PHILIPPOT, P. & KIENAST, J.R. 1989. Chemical-microstructural changes in eclogite -facies shear zones (Monviso, Western Alps, north Italy) as indicators of strain history and the mechanism and scale of mass transfer. *Lithos* **23**(3), 179-200.
- POLINO, R., DAL PIAZ, G.V. & GOSSO, G. 1990. Tectonic erosion at the Adria margin and accretionary processes for the Cretaceous orogeny of the Alps. *Mémoire de la Société Géologique de France* **156**, 345-367.
- RESTON, T. J. & RANERO, C.R., 2011. The 3-D geometry of detachment faulting at mid-ocean ridges. *Geochemistry, Geophysics, Geosystems* **12**, Q0AG05, doi:10.1029/2011GC003666.

- REUBER, G., KAUS, B.J.P., SCHMALHOLZ, S.M. & WHITE, R.W. 2016. Nonlithostatic pressure during subduction and collision and the formation of (ultra)high-pressure rocks. *Geology*, First published online April 2016, doi: 10.1130/G37595.1
- RICOU, L.E. & SIDDANS, W.B. 1986. Collision tectonics in the western Alps: *Geological Society of London, Special Publications* **19**, 229–244.
- ROSENBAUM, G. & LISTER, G.S. 2005. The Western Alps from the Jurassic to Oligocene: spatio-temporal constraints and evolutionary reconstructions. *Earth-Sciences Review* **69**, 281–306.
- RUBATTO, D. & ANGIBOUST, S. 2015. Oxygen isotope record of fluid metasomatism during subduction: a P-T-time-fluid path for the Monviso eclogites (Italy). *Contributions to Mineralogy and Petrology* **170**(5).
- RUBATTO, D. & HERMANN, J. 2003. Zircon formation during fluid circulation in eclogites (Monviso, Western Alps): implications for Zr and Hf budget in subduction zones. *Geochimica et Cosmochimica Acta* **67** (12), 2173–2187.
- SCHROEDER, T., JOHN, B. & FROST, B.R. 2002. Geologic implications of seawater circulation through peridotite exposed at slow-spreading mid-ocean ridges. *Geology* **30** (4), 367–370.
- SCHWARTZ, S., LARDEAUX, J., GUILLOT, S. & TRICART, P. 2000. Diversité du métamorphisme éclogitique dans le massif ophiolitique du Monviso (Alpes occidentales, Italie). *Geodinamica Acta* **13**, 169–188.
- SPANDLER, C., PETTKE, T. & RUBATTO, D. 2011. Internal and External Fluid Sources for Eclogite-facies Veins in the Monviso Meta-ophiolite, Western Alps: Implications for Fluid Flow in Subduction Zones. *Journal of Petrology* **52**(6), 1207–1236
- TARTAROTTI, P., FESTA, A., BENCIOLINI, L. & BALESTRO, G. 2017. Record of Jurassic mass transport processes through the orogenic cycle: Understanding chaotic rock units in the high-pressure Zermatt-Saas ophiolite (Western Alps). *Lithosphere* **9**(3), 399–407. doi:10.1130/L605.1
- THEUNISSEN, K., KLERKX, J., MELNIKOV, A. & MRUMA, A. 1996. Mechanisms of inheritance of rift faulting in the western branch of the East African Rift, Tanzania. *Tectonics* **15**, 776–790.
- TOTH, J. & GURNIS, M. 1998. Dynamics of subduction initiation at preexisting fault zones. *Journal of Geophysical Research* **103**, 18053–18067
- TOMMASI, A. & VAUCHEZ, A. 2001. Continental rifting parallel to ancient collisional belts: an effect of the mechanical anisotropy of the lithospheric mantle. *Earth and Planetary Science Letters* **185**, 199–210.
- TRICART, P. & LEMOINE, M. 1991, The Queyras ophiolite west of Monte Viso (Western Alps): indicator of a peculiar ocean floor in the Mesozoic Tethys. *Journal of Geodynamics* **13**, 163–181.
- TRICART, P. & SCHWARTZ, S. 2006. A north-south section across the Queyras Schistes lustrés (Piedmont zone, western Alps): Syn-collision refolding of a subduction wedge. *Eclogae Geologicae Helvetiae* **99**, 429–442.
- TRICART, P., SCHWARTZ, S., SUE, C. & LARDEAUX, J. M. 2004. Evidence of synextension tilting and doming during final exhumation from analysis of multistage faults (Queyras Schistes lustrés, Western Alps). *Journal of Structural Geology* **26**, 1633–1645.

- TUCHOLKE, B., LIN, J. & KLEINROCK, M.C. 1998. Megamullions and mullion structure defining oceanic metamorphic core complexes on the Mid-Atlantic Ridge. *Journal of Geophysical Research* **103**, 9857-9866.
- VISSERS, R.L.M., VAN HINSBERGEN, D.J.J., MEIJER, P.TH. & PICCARDO, G.B. 2013. Kinematics of Jurassic ultra-slow spreading in the Piemonte Ligurian ocean. *Earth and Planetary Science Letters* **380**, 138–150
- WILSON, J.T. 1966. Did the Atlantic close and then re-open? *Nature* **211**, 676-681.

Figures

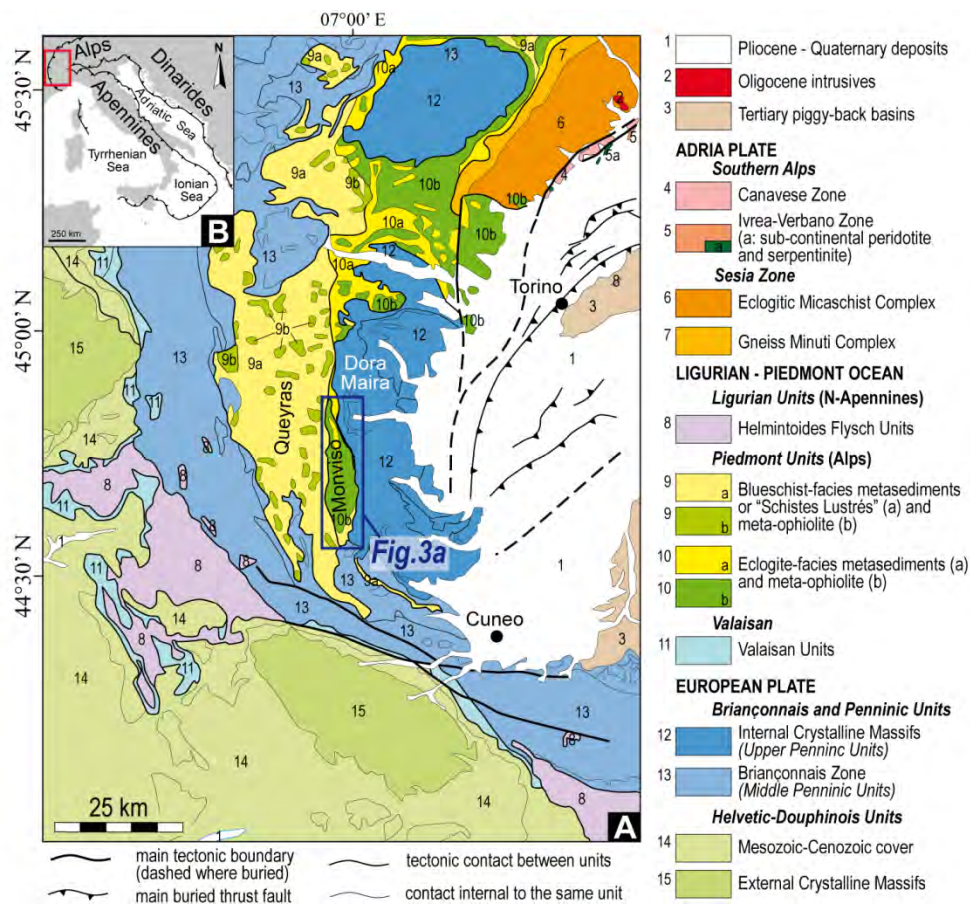


Figure 1 (Colour online) - (A) Tectonic map of the Western Alps (modified from Balestro et al., 2015a) with the location of the studied sector. **(B)** Location of map in (A).

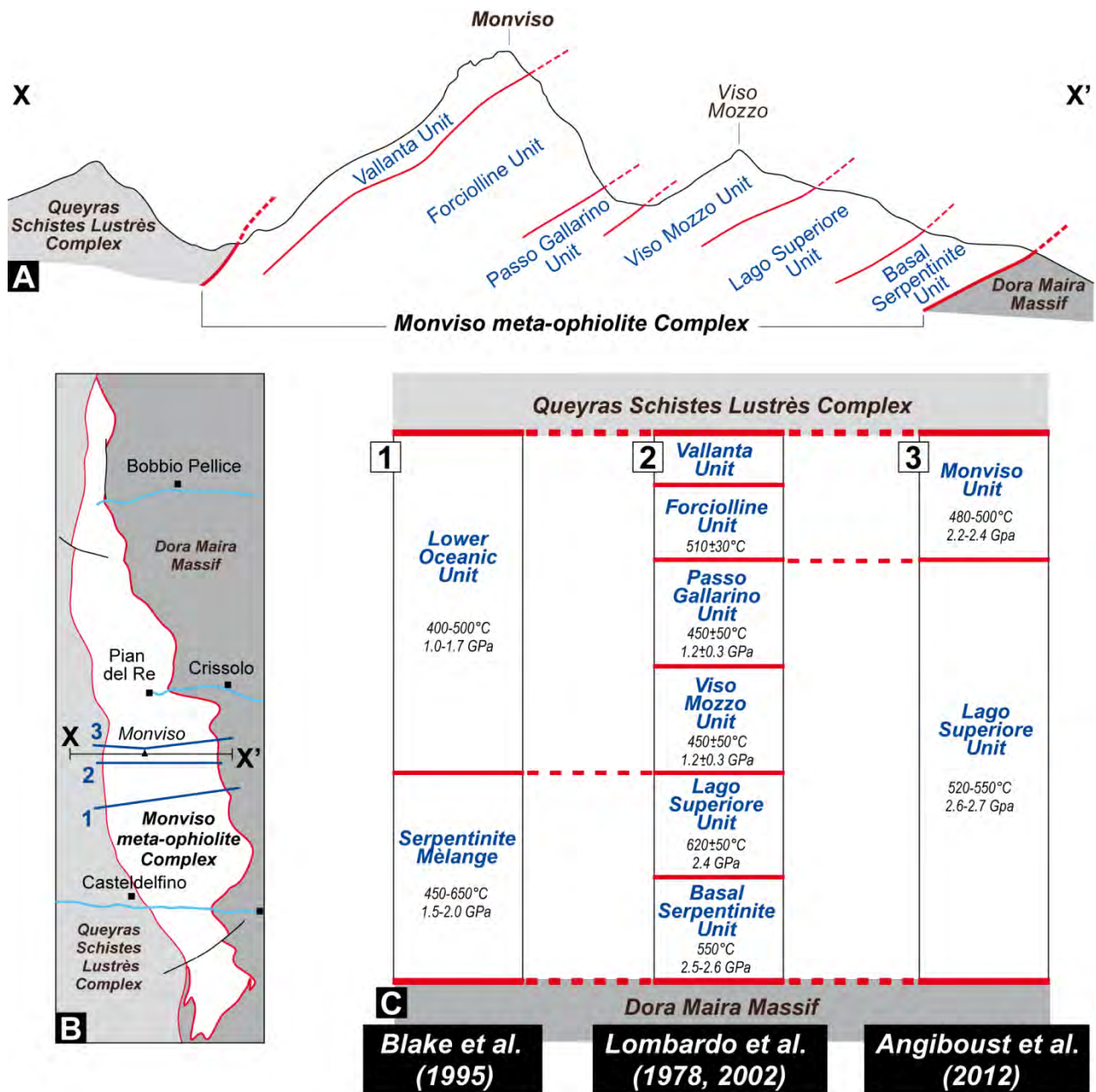


Figure 2 (Colour online) – (A) Simplified geological cross section through the central part of the Monviso meta-ophiolite Complex, showing its early subdivision in different tectonic units according to Lombardo et al. (1978, 2002). (B) Simplified geological map with traces of the geological cross sections each referring to tectonostratigraphic interpretations and tectonometamorphic data summarized in (C). (C) Correlation between simplified tectonostratigraphic and tectonometamorphic columns of the MO, according to literature; P-T metamorphic peaks from Blake et al. (1995) (column 1: Lower Oceanic Unit, Serpentinite Mèlange; column 2: Forciolline Unit), Schwartz et al. (2000) (column 2: Passo Gallarino and Viso Mozzo units), Messiga et al. (1999) (column 2: Lago Superiore Unit), Groppo and Castelli (2010) (column 2: Basal Serpentinite Unit) and Angiboust et al. (2012) (column 3: Monviso and Lago Superiore units).

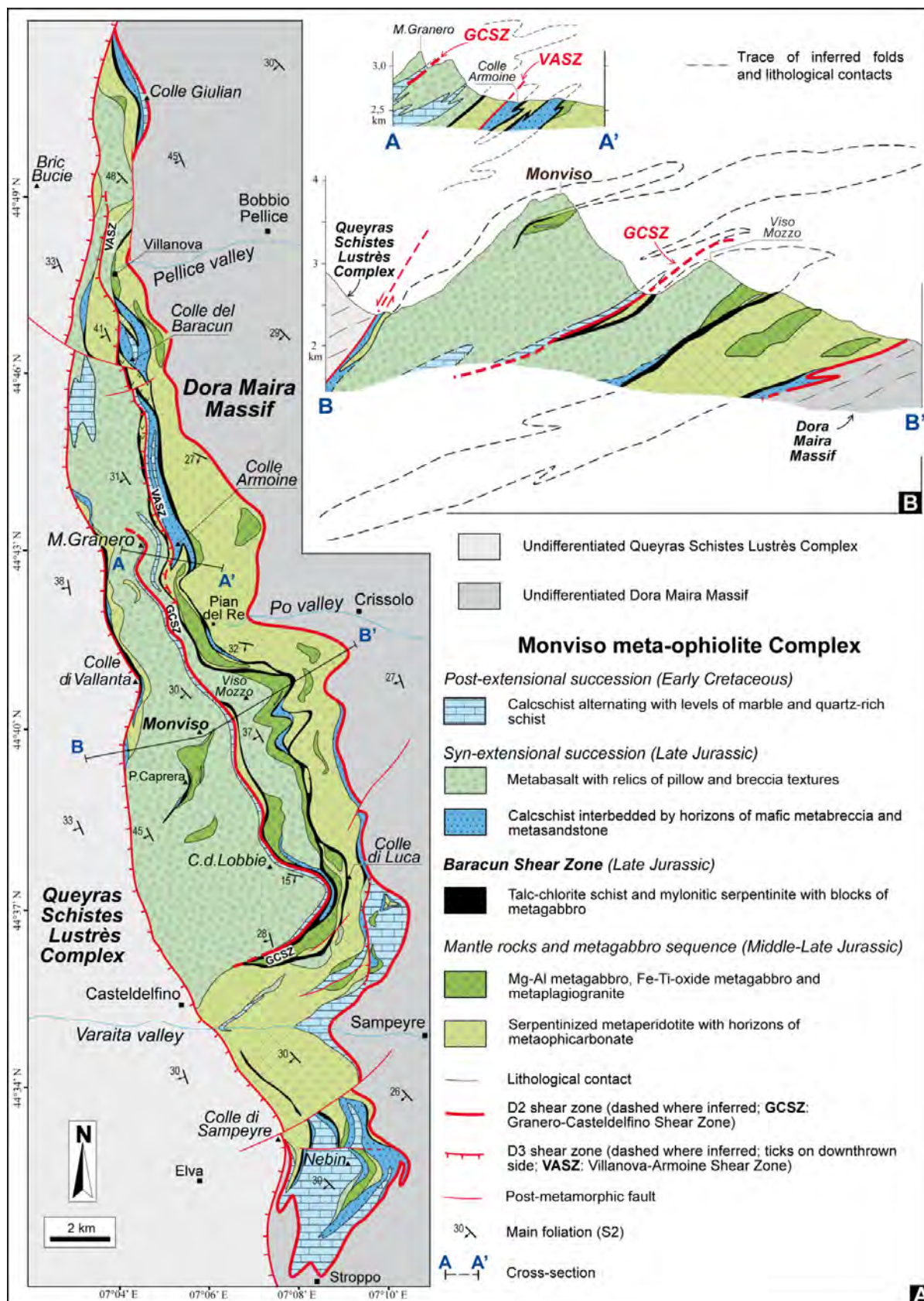


Figure 3 (Colour online) - Geological map (A) and representative geological cross sections (B) of the Monviso meta-ophiolite Complex (note that the scale is different from the map).

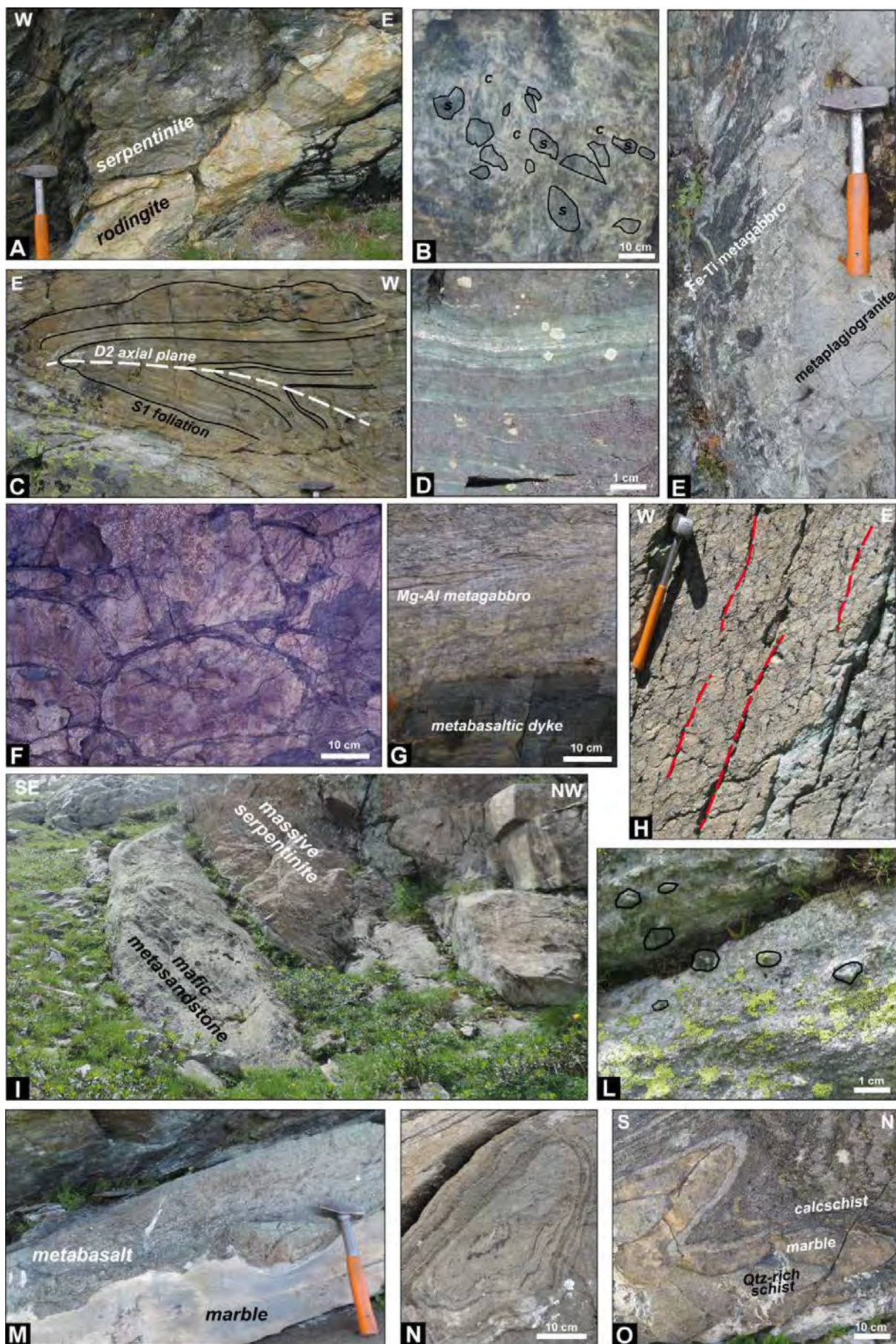


Figure 4 (Colour online) - Field images of main lithological units, contact relationships and structures in the mantle rocks and metagabbro, syn-extensional and post-extensional sequences. (A) Rodingitized metagabbro

dyke in massive serpentinite (E of Viso Mozzo). **(B)** Close-up view of a meta-ophicarbonate horizon, consisting of serpentinite clasts (s) meshed in a calcite-dolomite vein network (c) (S of Colle di Luca). **(C)** Mg-Al metagabbro deformed by recumbent D2 folds with stretched and boudinaged long limbs (E of Viso Mozzo). **(D)** Close up view of a mylonitic Fe-Ti-oxide metagabbro (NE of Casteldelfino). **(E)** Preserved magmatic relationship between Fe-Ti-oxide metagabbro and metaplagiogranite (NW of Sampeyre). **(F)** Metabasalt with well-preserved pillow structure (Colle delle Lobbie). **(G)** Close-up view of a contact between Mg-Al metagabbro and metabasaltic dyke (E of Viso Mozzo). **(H)** Metabasalt showing relict brecciated texture and penetrative D3 fracture cleavage (dashed lines) (NW of M. Granero). **(I)** Overturned stratigraphic contact between massive serpentinite and metasandstone of gabbroic composition (NW of M. Granero). **(L)** Close-up view of a layer of matrix-supported mafic metabreccia characterized by sub-angular clasts of gabbroic composition (Colle del Baracun). **(M)** Overturned primary contact between the metabasalt of the syn-extensional sequence and the marble of the post-extensional one (SE of Colle di Luca). **(N)** D2 non-cylindrical fold hinge in a block of post-extensional calcschist (Colle del Baracun). **(O)** D2 tight folds highlighted by alternating layers of calcschist, marble and quartz-rich schist (Colle del Baracun).

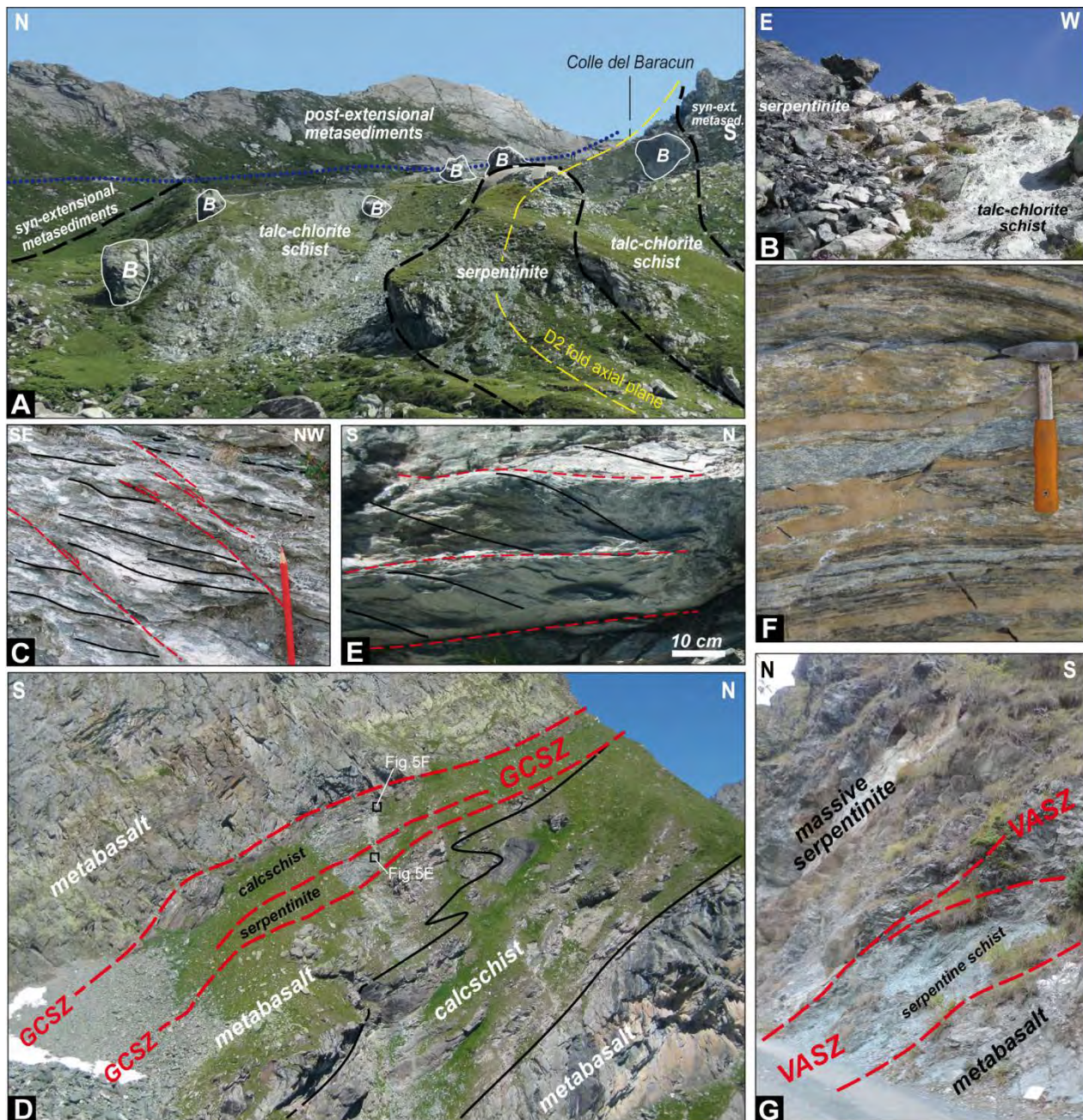
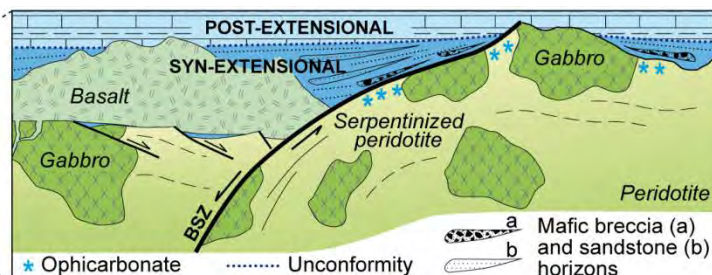
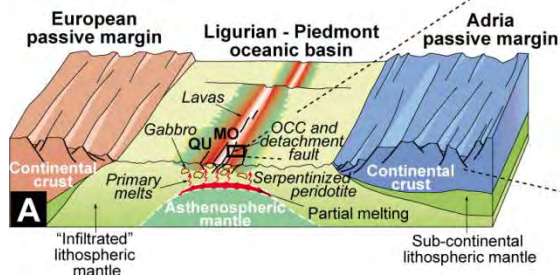


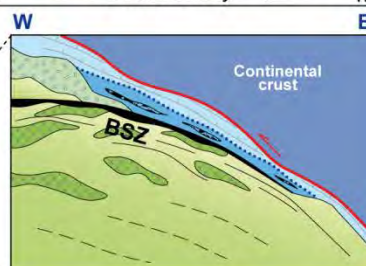
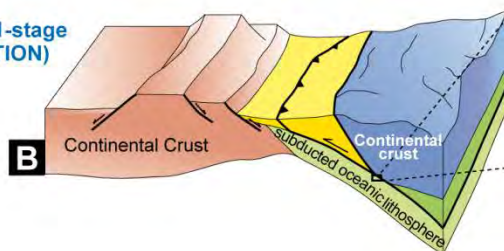
Figure 5 (Colour online) - (A) Panoramic view of the folded Baracun Shear Zone at Colle del Baracun: the meta-ophiolite sequence is here deformed by D2 folds and consists of massive serpentinite, talc-chlorite schist embedding blocks (B) of metagabbro (the BSZ), syn-extensional metasediments and post-extensional ones. Note that the post-extensional metasediments rest unconformably (dotted line) on both syn-extensional ones and rocks of the BSZ (modified after [Balestro et al., 2015a](#)). (B) Massive serpentinite and talc-chlorite schist of the BSZ occurring at the top of the MO, along the tectonic contact with the overlying Queyras Schistes Lustrés Complex (W of M. Granero). (C) Close up view of talc-chlorite-schist of the BSZ, wherein the S2-parallel fabric (black lines) is crosscut by D3 extensional shear planes (dashed lines) (Colle del Baracun). (D) Panoramic view of the Granero-Casteldelfino Shear Zone: the GCSZ (dashed lines) consists of post-extensional mylonitic calcschist and serpentine schist, and it juxtaposes metabasalt (in the hanging wall) on metabasalt and post-extensional calcschist (in the footwall), deformed by D2 folds (SSW of M. Granero). (E) Close up view of the serpentine schist of Figure 5D, showing the structural relationships between the mylonitic foliation (dashed lines) and the S2 (black lines). (F) Close up view of the post-extensional mylonitic calcschist of Figure 5D. (G) View of the Villanova-Armoine Shear Zone: the VASZ (dashed lines) consists of serpentine schist and juxtaposes massive serpentinite (in the hanging wall) on metabasalt (in the footwall) (NW of Villanova).

INTRA-OCEANIC STAGE

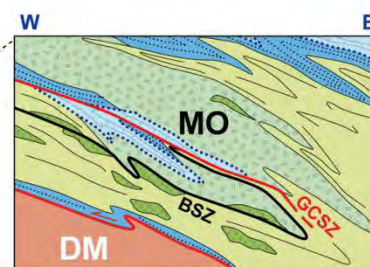
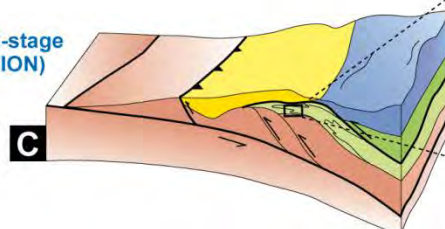
Embryonic oceanic crust



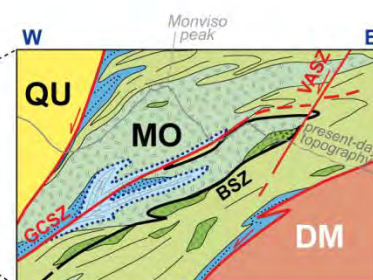
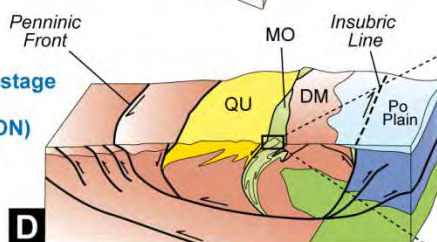
ALPINE D1-stage (SUBDUCTION)



ALPINE D2-stage (EXHUMATION)



ALPINE D3-stage (LATE EXHUMATION)



BR - Briançonnais
BSZ - Baracun Shear Zone
DM - Dora Maira Massif
GCSZ - Granero-Casteldelfino Shear Zone
MO - Monviso meta-ophiolite Complex
QU - Queyras Schistes Lustrés Complex
VASZ - Villanova-Armoine Shear Zone

NOT TO SCALE

Figure 6 (Colour online) – Cartoons showing the different stages of the tectonic and geodynamic evolution of the Monviso meta-ophiolite Complex from the Jurassic intra-oceanic stage (A) to the Alpine subduction (B), early exhumation (C), and late exhumation (D) stages (modified from Lardeaux et al., 2006, Balestro et al., 2015a, 2015b). See text for explanation. Details of each tectonic and geodynamic stage are represented, showing the role of the inherited intra-oceanic tectono-stratigraphic architecture in controlling the subsequent Alpine deformation of the Monviso meta-ophiolite Complex. Detail of (A) is modified from Balestro et al. (2015a) and Festa et al. (2015).