

AperTO - Archivio Istituzionale Open Access dell'Università di Torino

**Usefulness of triphasic CT aortic angiography in acute and surveillance: Our experience in the assessment of acute aortic dissection and endoleak**

**This is the author's manuscript**

*Original Citation:*

*Availability:*

This version is available <http://hdl.handle.net/2318/1609156> since 2018-12-01T15:41:12Z

*Published version:*

DOI:10.1016/j.ijisu.2016.05.048

*Terms of use:*

Open Access

Anyone can freely access the full text of works made available as "Open Access". Works made available under a Creative Commons license can be used according to the terms and conditions of said license. Use of all other works requires consent of the right holder (author or publisher) if not exempted from copyright protection by the applicable law.

(Article begins on next page)

# Usefulness of triphasic CT aortic angiography in acute and surveillance: Our experience in the assessment of acute aortic dissection and endoleak

Alfonso Reginelli, Raffaella Capasso, Vincenzo Ciccone, Maria Rosaria Croce, Graziella Di Grezia, Mattia Carbone, Nicola Maggialelli, Antonio Barile, Paolo Fonio, Michele Scialpi, Luca Brunese

## Highlights

- No standardized techniques actually exist for aortic CTA.
- Triphasic CTA is useful to provide correct and prompt diagnosis of AAD in emergency.
- Triphasic CTA is essential for first follow-up examination during surveillance.

## Abstract

### Introduction

Computed tomography angiography (CTA) has been widely used in the diagnostic evaluation of many aortic diseases, but no standardized techniques actually exist for aortic CTA. The aim of this study was to describe the usefulness of triphasic CTA in aortic assessment in both non-traumatic emergency and surveillance conditions.

### Methods

We performed non ECG-gated CTA examinations with a 64-slice CT scanner using a triphasic protocol consisting of an unenhanced acquisition, and two (early and delayed) contrastographic phases with a delay of 25–30 s and 100–120 s respectively after the injection of contrast medium. Were retrospectively selected adult patients with imaging findings of acute aortic dissection (AAD) or endoleak (EL) from November 2012 to November 2014.

### Results

AAD was detected in 36 (67%) patients: 23 type A-AADs, and 13 type B-AADs. The presence of EL was observed in 18 (33%) patients: 1 type Ia, 5 types IIa, 2 types IIb, 1 type IIIa and 9 types IIIb.

### Discussion

Triphasic CTA is useful to provide correct and prompt diagnosis of AAD in emergency, allowing the evaluation of type and atypical forms of AAD, and the identification of possible branch-vessel involvement and complications. During surveillance, triphasic CTA assures accurate and complete assessment of all known and unknown ELs and it is essential for first follow-up examination.

### Conclusion

Triphasic CTA represents a reliable imaging tool for aortic assessment in both non-traumatic emergency and surveillance after endovascular aneurysm repair. Modified protocol could be employed in selected patients and tailored in their known disease.

### Keywords:

[Computed tomography angiography \(CTA\)](#), [Triphasic CTA](#), [Acute aortic dissection](#), [Endoleaks](#), [EVAR](#)

### Abbreviations:

[AA](#) (aortic aneurysm), [AAD](#) (acute aortic dissection), [CM](#) (contrast medium), [CTA](#) (computed tomography angiography), [EL](#) (endoleaks), [EVAR](#) (endovascular aneurysm repair), [HU](#) (Hounsfield Unit), [MIP](#) (maximum-intensity projection), [MPR](#) (multiplanar reformation), [SSD](#) (shaded-surface display)

## 1. Introduction

Over the last two decades, computed tomography angiography (CTA) has been widely used in the diagnostic evaluation of many acute vascular diseases, and this technique currently represents the

first line modality in the early diagnosis of abdominal aortic aneurysm (AA), acute aortic dissection (AAD) and pulmonary embolism [1, 2]. CTA is also commonly used to follow-up patients treated with endovascular stents and stent grafts with the aim of assessing stent graft patency and stent graft-related complications [1, 3].

Actually, no standardized techniques exist for aortic CTA, therefore practices, the type of scanners and acquisition protocols, contrast medium (CM) concentration and administered doses, delay times for contrastographic phases may vary from institution to institution [1, 4, 5]. Our hospital generally employs a triphasic protocol consisting of an unenhanced acquisition, and two (early and delayed) contrastographic phases. This protocol is chosen both when acute aortic syndrome is suspected and also when patients need to be followed-up to assess any endoleaks (ELs) after endovascular aneurysm repair (EVAR).

The aim of the current study was to describe the usefulness of triphasic CTA in aortic non-traumatic emergency and surveillance conditions presenting our center experience in diagnosing AAD and in assessing post-EVAR EL.

## **2. Materials and methods**

### **2.1. Study population**

This was a retrospective observational study conducted at a single university medical center and approved by our institutional review board. All triphasic CTA examinations performed at our institution from November 2012 to November 2014 were retrospectively reviewed in order to identify and select adult patients with AAD or post-EVAR EL imaging findings.

Our institutional database was checked to retrieve necessary and useful clinical information, such as the time of symptoms onset for patients admitted to our emergency department and the date of endograft repair or the time when EL was diagnosed for patients who underwent CTA EVAR follow-up.

### **2.2. CTA protocol and image analysis**

Non ECG-gated CTA examinations were performed with a 64-slice CT scanner (GE Medical Systems, Milwaukee, WI) scanning from the lung apices to the pelvis before and after intravenous injection of CM, with respiration suspended whenever possible. After a scout view was obtained, initial unenhanced images were acquired. According to patient weight, 90–130 mL of 350 mg iodine/mL (Iomeron 350, Bracco) non-ionic CM were injected into a peripheral vein at a rate of 3–4 mL/s followed by a saline flush through a double-piston power injector. After unenhanced scanning, an early contrast-enhanced phase was acquired with automatic triggering settled at 100 Hounsfield Unit (HU) or with a delay of 25–30 s following CM administration. Then, a delayed contrast-enhanced phase was obtained at 100–120 s after CM injection.

Images were initially assessed in axial view and further elaborating multiplanar reformation (MPR) images in sagittal, coronal, oblique sagittal, and curved projections, maximum-intensity projection (MIP) and shaded-surface display (SSD) reconstruction generated on CT scan vendor workstation. According to the Stanford classification, acute type A dissection was defined as any dissection that involved the ascending aorta and/or aortic arch and acute type B as that involving the descending aorta (without any tear in or involvement of the ascending aorta) presenting within 14 days of symptom onset [6, 7]. ELs were defined as leakage of CM outside the graft, but within the aneurysm sac and were classified into five types depending upon the origin of the leak (Table 1) [8, 9, 10].

**Table 1**

There are several causes of endoleak which can be classified into five types as showed in this table, depending upon the origin of the leak.

Classification of endoleaks	
• <b>type I:</b> leak at graft attachment site	
Ia: proximal	
Ib: distal	
Ic: iliac occluder	
• <b>type II:</b> aneurysm sac filling via branch vessel (most common)	
IIa: single vessel	
IIb: two vessels or more	
• <b>type III:</b> leak through defect in graft	
IIIa: junctional separation of the modular components	
IIIb: fractures or holes involving the endograft	
• <b>type IV:</b> leak through graft fabric as a result of graft porosity	
• <b>type V:</b> continued expansion of aneurysm sac without demonstrable leak on imaging (endotension)	

### 3. Results

There were a total of 54 patients (37 Males, 17 Females; 43–78 years, mean age 61 years) included in the study (Table 2). CTA examinations performed at our emergency department revealed AAD in 36 (67%) patients: 23 cases of type A-AAD, and 13 cases of type B-AAD. CTA follow-up examinations showed the presence of EL in 18 (33%) patients: type Ia in 1 case, type IIa in 5 cases, type IIb in 2 cases, type IIIa in 1 case and type IIIb in 9 cases.

**Table 2**

This table shows the total number (n.) of patients included in the study with acute aortic dissection and endoleak imaging findings; are also reported the number and the percentage of patients for each type of disease.

Results						
Patients total n.	Diagnosis	n.	%	Type	n.	%
54	Acute	36	67	A	23	64
	Aortic dissection			B	13	36
18	Endoleak	18	33	IA	1	5.5
				IIA	5	28
				IIB	2	11
				IIIA	1	5.5
				IIIB	9	50

Patients with AAD were referred to our institution from 1 to 11 days (mean 3 days) after abrupt-onset pain, defined as sudden severe tearing pain in the chest, neck, or back, or any pain and severe symptoms that brought the patient to medical attention. ELs were assessed from 10 to 82 months

(mean 46 months) after aneurysm repair performed at multiple hospitals; the date of endograft repair was not available in 5 patients, although, based on patient history, these patients had grafts placed more than 1 year before referral to our institution. ELs were already known in 6 patients and were newly diagnosed in the remaining 12 cases.

## 4. Discussion

### 4.1. Triphasic CTA in acute (non-traumatic) aortic disease

CTA is the practical test of choice in most settings and represents the most commonly used imaging technique for evaluation of suspected acute aortic syndrome and AAD in particular. The identification of an intimal flap and a true and a false aortic lumen are definitive signs of aortic dissection, which allow CTA to diagnose AAD with high sensitivity and specificity [7, 11, 12]. CM injection rates and technical parameters may vary based on institutional preferences and patients' characteristics, different CT vendors and configuration of scanners. However, protocols for assessing AAD have to include both unenhanced and contrast-enhanced image acquisitions, scanning of the entire aorta from the proximal arch vessels to the common iliac arteries distally, and appropriate optimization of aortic true lumen enhancement [3]. All of these necessary features are part of our institutional CTA protocol.

The primary role of unenhanced scanning is to detect medially displaced aortic calcifications [3]. The unenhanced images may also be helpful to assess high attenuation within the aortic wall resulting from either a hyperdense false lumen or the presence of intramural hematoma [3, 13, 14, 15]. Furthermore, it is reported that unenhanced CT could directly show the intimal flap of the dissection, especially in patients with severe anemia [16]. If the contrast between the density of the aortic wall and the density of the aortic lumen is large, the intimal flap of AAD appears visible on unenhanced CT (Fig. 1) [3, 11]. In patients with adverse reaction to iodinated CM or with impaired renal function, these findings may be sufficient for diagnosis or for serial monitoring without administration of potentially nephrotoxic iodinated intravenous CM [3]. Unenhanced CT is also useful to appreciate signs of aortic rupture revealing hyperattenuating mediastinal, pericardial, or pleural fluid collection [13].



**Fig. 1**

Unenhanced image shows the intimal flap as a thin hypodense line (white arrows) within aortic lumen.

The administration of intravenous CM is essential to appreciate the diagnostic key finding of AAD and an intimal flap separating the true lumen from the false lumen [3, 7]. An appropriate scan delay is critical for accurate vascular imaging [17]. As a general rule, a standard delay of 25 s for multi-detector CTA will usually suffice. One may perform a test injection to determine the time to optimal aortic opacification in a given patient. A 20-cc bolus of contrast is administered and after 10 s, one image every 2 s is acquired at the same level for a total of 30 s. The image with the greatest contrast density is used to select the proper scan delay. This method is somewhat cumbersome to perform routinely, and has the added detraction of an increased radiation dose as well as a slight increase in visceral background attenuation due to the injected contrast [4]. As an alternative, bolus timing software packages allow the time to peak enhancement to be monitored without a separate test injection. These programs monitor the attenuation within a region of interest (ROI) drawn within the vessel in question and display the attenuation graphically in real-time

during the contrast injection. Once the graph demonstrates a sharp rise in attenuation, the scan sequence is triggered automatically according to the HU threshold value settled or started manually according visual assessment of lumen opacification [4]. At our institution, we prefer to use bolus timing software with automatic triggering settled at 100 HU positioning a ROI within the ventral side of distal thoracic aorta. Manual starter is reserved for cases of automatic trigger failure. In the present study, manual starter was employed in 2 cases and was respectively due to inadequate positioning of the ROI slightly outside the vessel lumen (probably patient moved during CM injection), and to an atypical course of the true lumen (Fig. 2).



**Fig. 2**

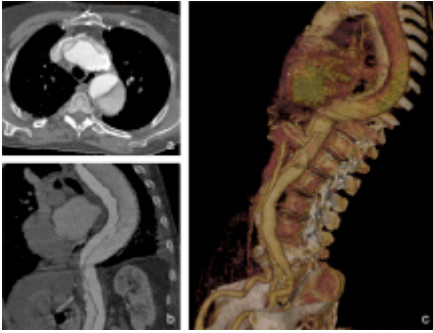
Manual starter-early contrastographic image reveals the presence of an atypical course of the true lumen which is visible in the posterior side of thoracic aorta, back to the false lumen (F).

CM administration is required to provide information regarding the type and the extent of AAD, the status of false lumen, and blood flow in aortic branches [11, 18]. The false lumen usually has slower flow and a larger diameter. The differentiation between false and true lumen can sometimes be challenging, especially when both lumens appear similar in degree of opacification and size [3, 7, 18]. In some cases, the intimal flap has an atypical configuration such as: dissection of the entire intima with a circumferential intimal flap, a filiform true lumen, a calcified false lumen in chronic dissection, a three-channel aorta (Mercedes-Benz sign) or an aorta with several false channels; and intima-intimal intussusception [7, 12]. In our study 1 case of circumferential intimal flap was observed (Fig. 3). Accurate differentiation at CT between the true and the false lumen was relatively unimportant previously because surgery was the main therapy used; however, this distinction recently has become particularly important for planning endovascular treatment of dissection because the endograft must be positioned in the true lumen [19, 20]. Both approaches require accurate localization of the intimal tear site because both open surgical repair and stent-graft implantation usually attempt to occlude the tear and to induce thrombosis of the false lumen [21, 22]. In this context, MIP, MPR and SSD images reconstruction (Fig. 4, Fig. 5) are an indispensable tool which allows multidetector CTA to provide specific and precise measurements of anterograde or retrograde extent of dissection, including length, diameter of the aorta and the true and false lumens, involvement of vital vasculature, and distance from the intimal tear to the vital vascular branches [3, 7, 35].



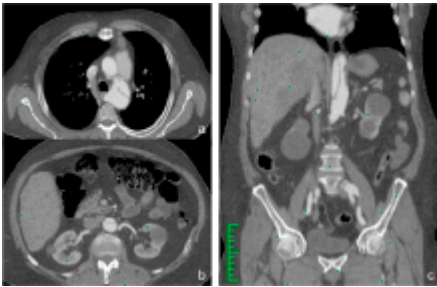
**Fig. 3**

Circumferential intimal flap-a) axial image and b) oblique coronal reconstruction show the true lumen (black star) surrounded by false lumen.



**Fig. 4**

Acute aortic dissection type A-a) axial image, b) curved projection and c) shaded-surface display reconstruction allow to assess the course of intimal flap.



**Fig. 5**

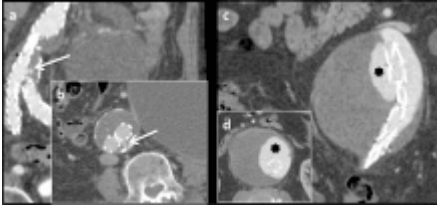
Acute aortic dissection type B- a,b) axial images and b) coronal view show the sparing of ascending aorta.

More than one-third of patients with aortic dissection present signs and symptoms secondary to other organ system involvement. The most common mechanism is the development of ischemia secondary to obstruction of branch arteries originating from the aorta. There are two principal mechanisms of branch-vessel compromise: static, if the dissection flap intersects or enters the branch-vessel origin and dynamic, if the intimal flap spares the branch vessel but prolapses and covers the branch-vessel origin like a curtain. A branch-vessel obstruction could also be caused by a direct compression of the branch artery by an expanding false lumen. Another mechanism of organ system involvement is rupture of the dissected aorta, causing blood to leak into the surrounding structures. Such events are usually fatal. It is therefore important to evaluate the entire aorta so as to determine the distal extent of the dissection and to detect possible abdominal ischemic disease that might increase morbidity and mortality [7, 23]. In order to identify any parenchymal areas of hypoperfusion/ischemia, we routinely perform delayed contrastographic phases 90–100 s after CM administration. Obstruction in the main abdominal arterial branches (celiac, superior mesenteric, renal, and inferior mesenteric arteries) and parenchymal ischemic injuries can be easily demonstrated with CTA [36, 37]. The diagnosis can be made on transverse CT images, but MPR images play an important complementary role in determining the extent of involvement of aortic branch vessels. Finally, delayed contrastographic phase is also necessary to visualize slow flow in the false lumen, appearing not well enhanced in early contrastographic phase, in order to exclude its complete occlusion or thrombosis. One of our patients presented abdominal symptoms suggestive of acute bowel ischemia and mesenteric occlusion was suspected. On early contrastographic phase, CTA showed a type-B AAD with patent mesenteric arteries while delayed contrastographic phase excluded ischemic bowel injury.

#### **4.2. Triphasic CTA in post-EVAR surveillance**

Stent-graft integrity is of paramount importance to EVAR, and this can only be assessed by medical imaging. Currently, CTA is the preferred imaging modality for routine imaging follow-up of postoperative EVAR [1, 24, 25]. Many patients require reintervention during the middle and long-term follow-up because of procedure-related complications [38]. For this reason, surveillance of

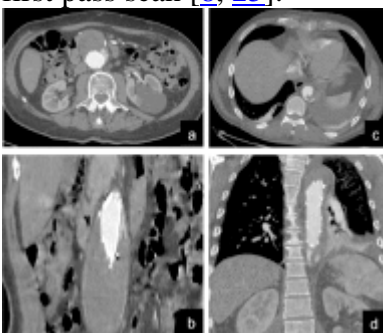
these patients is crucial to determine the long-term performance of these devices [9]. Commonly employed CT surveillance protocols recommend regular scans at 1, 6 and 12 months post-implantation and at yearly intervals thereafter. CTA is useful to detect post-procedural complications such as migration, kinking, structural failure, infection, and EL with aneurysm growth (Fig. 6) [25, 26, 27]. EL is a common procedural failure due to persistent flow outside the graft within the aneurysm sac causing further enlargement and rupture of the aneurysm sac itself [9, 28, 29].



**Fig. 6**

Type IIIa endoleak - a) coronal and b) axial images show contrast medium leak (white arrows) strictly adjacent to a junctional gap between modular components, with little contact with margins of the aneurysmal sac; Type IIIb endoleak - c) coronal and d) axial images show contrast medium leak (black asterisk) near a tear in the graft material without opacification of the lumbar arteries or inferior mesenteric artery.

CT protocol considered most reliable in detecting complications consists of a triphasic protocol including unenhanced, arterial phase (30-s delay), and delayed (120- to 300-s delay) phases, and it has been preferred for post- EVAR surveillance [8, 9, 25]. The unenhanced images can be helpful to avoid false-positive diagnoses, distinguishing hyperdense materials from an EL that appears on the arterial and/or delayed phase, but generally absent on image [8, 9, 25]. Then, unenhanced phase enables differentiation between true ELs and areas of calcification or high attenuation that mimic ELs (pseudo-ELs) [8, 25, 9]. Because ELs have variable flow rates, they can be detected at variable times after CM administration. For this reason, a delayed phase is recommended to detect ELs not appeared during the earlier arterial phase, the so-called low-flow ELs [9, 25]. Assessing the timing at which contrast appears in the aneurysm sac is also important for classification. As in our series, a type I endoleak manifests as early contrast opacification along the stent-graft attachment sites (Fig. 7), whereas a type II endoleak may appear on more delayed images, as we observed in 3 patients (Fig. 8, Fig. 9) [25, 30, 31]. At our institution, the arterial first pass scan is always followed by a delayed scan in order to not overlook slow flow ELs, which might have been missed on the first pass scan [8, 25].



**Fig. 7**

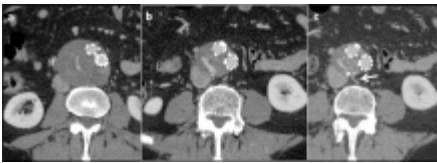
Type Ia endoleak - a) axial and b) coronal images reveal the leakage of contrast medium from the proximal attachment site; type Ib endoleak - c) axial and d) coronal images reveal the leakage of contrast medium from the distal attachment site.





**Fig. 8**

Type IIb endoleak - a) axial image and b) shaded-surface display reconstruction in early contrastographic phase, depict the leak of contrast agent in a posterolateral location within the aneurysm from the lumbar arteries.



**Fig. 9**

Slow flow type II endoleak-the leakage of contrast medium was appreciable on delayed contrastographic phase only, resulting from retrograde flow into the aneurysm sac from a feeding lumbar vessel (white arrow).

In order to reduce radiation dose, routine delayed images may be not always necessary and some authors have suggested employing a biphasic protocol (unenhanced and arterial first pass scans), but others have argued about their reliability in detecting slow flow ELs [8, 18]. Others propose that eliminating the arterial phase would lead to reduced radiation exposure and still allow the detection of an EL on delayed images especially if images are acquired with a dual-energy CT scan [25, 39]. In past years, researchers in two studies have suggested the same detection sensitivity for biphasic protocols (a non-enhanced phase and a venous phase) compared with triphasic protocols; however, neither of these studies had an external reference standard [24, 32, 33]. Also the unenhanced scan could be not always needed and reserved for first surveillance examination while omitted thereafter in the absence of complications [8, 25]. Subsequent scans can be performed with a biphasic protocol, and then compared with the initial non-contrast scan, thus minimizing radiation exposure to patients [8].

In our study, as it generally happens at our institution, most (14/18) of the patients were observed for the first time and previous CTA examinations were not always available for a prior evaluation in order to set up a focused CTA scan [40]. Moreover, because the findings of different types of ELs may be very similar on CTA, misclassification should be investigated [34]. Thus, triphasic protocol seemed to be the most reliable protocol for a complete assessment of any post-EVAR complications, depicting also the presence of any incidental extra-vascular findings. The unavailability of previous CTA examinations for a comparison of imaging findings in most patients referred to our institution from several different hospitals, may explains why we did not detect any case of type V EL, whose diagnosis requires the demonstration of a growth of the aneurysm sac without evident reperfusion defects [9]. For each surveillance study, size measurements should be precisely compared with prior measurements. To limit interobserver variability, measurements should be obtained in a plane perpendicular to the aneurysm centerline with fine calipers using the outer aneurysm wall as the boundary (adventitia-to-adventitia) [8]. In order to provide accurate measurements to be compared with previous/successive ones, we generally employ advanced reconstruction techniques, including 2D MPR, curved planar reformations created on lumen centerline, and 3D reconstructions [25, 41].

### **4.3. Limitations**

The present study had several limitations particularly due to its retrospective nature. The most important limitation was the heterogeneity of the study sample and the loss of information regarding patients' outcome because treatment and follow-up were often performed in different institutions. However, our study reflects the real working conditions and needs in the vast majority of hospitals where unselected patients are referred to perform angiographic examinations.

## **5. Conclusions**

When AAD is suspected, triphasic CTA should be the first diagnostic test performed. Multi-phasic examination is required to provide correct and prompt diagnosis, allowing the evaluation of type and atypical forms of AAD, and the identification of possible branch-vessel involvement and complications. During CTA follow-up after EVAR, triphasic protocol is essential for first surveillance examination, thereafter CTA protocol could be modified according to previous imaging findings in order to reduce radiation dose. However, triphasic CTA assures accurate and complete assessment of all known and unknown ELs.

## **Ethical approval**

This work not required an Ethical approval from ethical committee.

## **Funding**

All authors have no source of funding.

## **Authors' contribution**

**AR:** Participated substantially in conception, design, and execution of the study and in the analysis and interpretation of data; also participated substantially in the drafting and editing of the manuscript.

**RC:** Participated substantially in conception, design, and execution of the study and in the analysis and interpretation of data; also participated substantially in data collection and in the drafting and editing of the manuscript.

**VC:** participated substantially in data collection, execution of the study and in the analysis and interpretation of data.

**MCr:** participated substantially in data collection and in the analysis and interpretation of data.

**GdG:** participated in the drafting and editing of the manuscript and critically reviewed the manuscript.

**MCA:** carried out the imaging examinations, contributed to data collection and imaging analysis, reviewed the manuscript, and approved the final manuscript as submitted.

**NM:** Participated substantially in conception, design, and execution of the study and in the analysis and interpretation of data.

**AB:** Participated substantially in conception, design of the study and in the analysis and interpretation of data.

**PF:** critically reviewed the manuscript, made general supervision and approved the final manuscript as submitted.

**MS:** critically reviewed the manuscript, made general supervision and approved the final manuscript as submitted.

Alfonso Reginelli and Raffaella Capasso contributed equally to this work.

## **Conflict of interest**

All authors have no conflict of interests.

## **Acknowledgment**

This work received no funding. The authors declare that they have no competing interests.

## **References**

1. Sun, Z., Al Moudi, M., and Cao, Y. CT angiography in the diagnosis of cardiovascular disease: a transformation in cardiovascular CT practice. *Quant. Imaging Med. Surg.* 2014; 4: 376–396<https://doi.org/10.3978/j.issn.2223-4292.2014.10.02>
2. Sun, Z.H. Abdominal aortic aneurysm: treatment options, image visualizations and follow-up procedures. *J. Geriatr. Cardiol.* 2012; 9: 49–60<https://doi.org/10.3724/SP.J.1263.2012.00049>
3. Litmanovich, D., Bankier, A.a., Cantin, L., Raptopoulos, V., and Boiselle, P.M. CT and MRI in diseases of the aorta. *Am. J. Roentgenol.* 2009; 193: 928–940<https://doi.org/10.2214/AJR.08.2166>
4. Gotway, Michael B. Helical CT evaluation of the thoracic aorta. *Appl. Radiol.* 2000; 29 [http://www.medscape.com/viewarticle/406630\\_1](http://www.medscape.com/viewarticle/406630_1)
5. Rybicki, F.J. NIH public access. *Imaging.* 2011; 48: 213–235<https://doi.org/10.1016/j.rcl.2010.02.006.CT>
6. Nienaber, C.a., Fattori, R., Mehta, R.H., Richartz, B.M., Evangelista, A., Petzsch, M. et al. Gender-related differences in acute aortic dissection. *Circulation.* 2004; 109: 3014–3021<https://doi.org/10.1161/01.CIR.0000130644.78677.2C>
7. Castañer, E., Andreu, M., Gallardo, X., Mata, J.M., Cabezuelo, M.A., and Pallardó, Y. CT in nontraumatic acute thoracic aortic disease: typical and atypical features and complications. *Radiographics.* 2003; 23 Spec No: S93–S110<https://doi.org/10.1148/rg.23si035507>
8. Sharma, P. and Kyriakides, C. Surveillance of patients post-endovascular aneurysm repair. *Postgrad. Med. J.* 2007; 83: 750–753<https://doi.org/10.1136/pgmj.2007.062851>
9. Iezzi, R., Santoro, M., Dattesi, R., Pirro, F., Nestola, M., Spigonardo, F. et al. Multi-detector CT angiographic imaging in the follow-up of patients after endovascular abdominal aortic aneurysm repair (EVAR). *Insights Imaging.* 2012; 3: 313–321<https://doi.org/10.1007/s13244-012-0173-0>
10. Bashir, M.R., Ferral, H., Jacobs, C., McCarthy, W., and Goldin, M. Endoleaks after endovascular abdominal aortic aneurysm repair: management strategies according to CT findings. *Am. J. Roentgenol.* 2009; 192: 178–186<https://doi.org/10.2214/AJR.08.1593>
11. Kurabayashi, M., Okishige, K., Ueshima, D., Yoshimura, K., Shimura, T., Suzuki, H. et al. Diagnostic utility of unenhanced computed tomography for acute aortic syndrome. *Circ. J.* 2014; 78: 1928–1934<https://doi.org/10.1253/circj.CJ-14-0198>
12. Sebastià, C., Pallisa, E., Quiroga, S., Alvarez-Castells, a, Dominguez, R., and Evangelista, a. Aortic dissection: diagnosis and follow-up with helical CT. (quiz 149–50)*Radiographics.* 1999; 19: 45–60<https://doi.org/10.1148/radiographics.19.1.g99ja0945>
13. McMahon, M.A. and Squirrell, C.A. Multidetector CT of aortic dissection: a pictorial review. *Radiographics.* 2010; 30: 445–460<https://doi.org/10.1148/rg.302095104>
14. Wong, D.R., Lemaire, S.A., and Coselli, J.S. Managing dissections of the thoracic aorta. (doi:18481490)*Am. Surg.* 2008; 74: 364–380
15. Ueda, T., Chin, A., Petrovitch, I., and Fleischmann, D. A pictorial review of acute aortic syndrome: discriminating and overlapping features as revealed by ECG-gated multidetector-row CT angiography. *Insights Imaging.* 2012; 3: 561–571<https://doi.org/10.1007/s13244-012-0195-7>
16. Demos, T.C., Posniak, H.V., and Churchill, R.J. Detection of the intimal flap of aortic dissection on unenhanced CT images. *AJR Am. J. Roentgenol.* 1986; 146: 601–603<https://doi.org/10.2214/ajr.146.3.601>
17. Batra, P., Bigoni, B., Manning, J., Aberle, D.R., Brown, K., Hart, E. et al. Pitfalls in the diagnosis of thoracic aortic dissection at CT angiography. *Radiographics.* 2000; 20: 309–320<https://doi.org/10.1148/radiographics.20.2.g00mc04309>

18. Voitle, E., Hofmann, W., and Cejna, M. Aortic emergencies—diagnosis and treatment: a pictorial review. *Insights Imaging*. 2015; 6: 17–32 <https://doi.org/10.1007/s13244-014-0380-y>
19. Garzón, G., Fernández-Velilla, M., Martí, M., Acitores, I., Ybáñez, F., and Riera, L. Endovascular stent-graft treatment of thoracic aortic disease. *Radiographics*. 2005; 25: S229–S244 <https://doi.org/10.1148/rg.25si055513>
20. Dialetto, G., Reginelli, A., Cerrato, M., Rossi, G., Covino, F.E., Manduca, S. et al. Endovascular stent-graft treatment of thoracic aortic syndromes: a 7-year experience. *Eur. J. Radiol.* 2007; 64: 65–72 <https://doi.org/10.1016/j.ejrad.2007.06.019>
21. Kouchoukos, N.T. and Dougenis, D. Surgery of the thoracic aorta. *N. Engl. J. Med.* 1997; 336: 1876–1888 <https://doi.org/10.1056/NEJM199706263362606>
22. Nienaber, C.A., Fattori, R., Lund, G., Dieckmann, C., Wolf, W., von Kodolitsch, Y. et al. Nonsurgical reconstruction of thoracic aortic dissection by stent-graft placement. *N. Engl. J. Med.* 1999; 340: 1539–1545 <https://doi.org/10.1056/NEJM199905203402003>
23. Reginelli, A., Russo, A., Pinto, A., Stanzione, F., Martiniello, C., Cappabianca, S. et al. The role of computed tomography in the preoperative assessment of gastrointestinal causes of acute abdomen in elderly patients. *Int. J. Surg.* 2014; 12: S181–S186 <https://doi.org/10.1016/j.ijsu.2014.08.345>
24. Sommer, W.H., Becker, C.R., Haack, M., Rubin, G.D., Weidenhagen, R., Schwarz, F. et al. Time-resolved CT angiography for the detection and classification of endoleaks. *Radiology*. 2012; 263: 917–926 <https://doi.org/10.1148/radiol.12111217>
25. Picel, A.C. and Kansal, N. Essentials of endovascular abdominal aortic aneurysm repair imaging: postprocedure surveillance and complications. *AJR Am. J. Roentgenol.* 2014; 203: W358–W372 <https://doi.org/10.2214/AJR.13.11736>
26. Bown, M.J., Fishwick, G., and Sayers, R.D. The post-operative complications of endovascular aortic aneurysm repair. (accessed 15.08.15) *J. Cardiovasc. Surg. (Torino)*. 2004; 45: 335–347 <http://www.ncbi.nlm.nih.gov/pubmed/15365515>
27. van der Vliet, J.A., Kool, L.J.S., and van Hoek, F. Simplifying post-EVAR surveillance. *Eur. J. Vasc. Endovasc. Surg.* 2011; 42: 193–194 <https://doi.org/10.1016/j.ejvs.2011.04.012>
28. Ohki, T., Veith, F.J., Shaw, P., Lipsitz, E., Suggs, W.D., Wain, R.A. et al. Increasing incidence of midterm and long-term complications after endovascular graft repair of abdominal aortic aneurysms: a note of caution based on a 9-year experience. (discussion 334–5) (accessed 15.08.15) *Ann. Surg.* 2001; 234: 323–334 <http://www.pubmedcentral.nih.gov/articlerender.fcgi?artid=1422023&tool=pmcentrez&rendertype=abstract>
29. Görich, J., Rilinger, N., Sokiranski, R., Söldner, J., Kaiser, W., Krämer, S. et al. Endoleaks after endovascular repair of aortic aneurysm: are they predictable?-initial results. *Radiology*. 2001; 218: 477–480 <https://doi.org/10.1148/radiology.218.2.r01fe13477>
30. Shah, A. and Stavropoulos, S.W. Imaging surveillance following endovascular aneurysm repair. *Semin. Interv. Radiol.* 2009; 26: 10–16 <https://doi.org/10.1055/s-0029-1208378>
31. Stavropoulos, S.W. and Charagundla, S.R. Imaging techniques for detection and management of endoleaks after endovascular aortic aneurysm repair. *Radiology*. 2007; 243: 641–655 <https://doi.org/10.1148/radiol.2433051649>
32. Stolzmann, P., Frauenfelder, T., Pfammatter, T., Peter, N., Scheffel, H., Lachat, M. et al. Endoleaks after endovascular abdominal aortic aneurysm repair: detection with dual-energy dual-source CT. *Radiology*. 2008; 249: 682–691 <https://doi.org/10.1148/radiol.2483080193>
33. Macari, M., Chandarana, H., Schmidt, B., Lee, J., Lamparello, P., and Babb, J. Abdominal aortic aneurysm: can the arterial phase at CT evaluation after endovascular repair be eliminated to reduce radiation dose?. *Radiology*. 2006; 241: 908–914 <https://doi.org/10.1148/radiol.2413051571>

34. Funaki, B., Birouti, N., Zangan, S.M., Van Ha, T.G., Lorenz, J.M., Navuluri, R. et al. Evaluation and treatment of suspected type II endoleaks in patients with enlarging abdominal aortic aneurysms. (quiz 872)*J. Vasc. Interv. Radiol.* 2012; 23: 866–872<https://doi.org/10.1016/j.jvir.2012.04.003>
35. Floridi, C., Radaelli, A., Abi-Jaoudeh, N., Grass, M., Lin, M., Chiaradia, M., Geschwind, J.F., Kobeiter, H., Squillaci, E., Maleux, G., Giovagnoni, A., Brunese, L., Wood, B., Carrafiello, G., and Rotondo, A. C-arm cone-beam computed tomography in interventional oncology: technical aspects and clinical applications. (Epub 2014 Jul 11)*Radiol. Med.* 2014 Jul; 119: 521–532<https://doi.org/10.1007/s11547-014-0429-5>
36. Regine, G., Stasolla, A., and Miele, V. Multidetector computed tomography of the renal arteries in vascular emergencies. (Epub 2007 Jul 27)*Eur. J. Radiol.* 2007 Oct; 64: 83–91
37. Reginelli, A., Iacobellis, F., Berritto, D., Gagliardi, G., Di Grezia, G., Rossi, M., Fonio, P., and Grassi, R. Mesenteric ischemia: the importance of differential diagnosis for the surgeon. (Epub 2013 Oct 8. PMID:24267670)*BMC Surg.* 2013; 13: S51<https://doi.org/10.1186/1471-2482-13-S2-S51>
38. Ierardi, A.M., Floridi, C., Fontana, F., Duka, E., Pinto, A., Petrillo, M., Kehagias, E., Tsetis, D., Brunese, L., and Carrafiello, G. Transcatheter embolisation of iatrogenic renal vascular injuries. (Epub 2013 Dec 3)*Radiol. Med.* 2014 Apr; 119: 261–268<https://doi.org/10.1007/s11547-013-0343-2>
39. Buffa, V., Solazzo, A., D'Auria, V., Del Prete, A., Vallone, A., Luzietti, M., Madau, M., Grassi, R., and Miele, V. Dual-source dual-energy CT: dose reduction after endovascular abdominal aortic aneurysm repair. (Epub 2014 Jul 2. PMID: 24985136)*Radiol. Med.* 2014 Dec; 119: 934–941<https://doi.org/10.1007/s11547-014-0420-1>
40. Maggialelli, N., Capasso, R., Pinto, D., Carbone, M., Laporta, A., Schipani, S., Piccolo, C.L., Zappia, M., Reginelli, A., D'Innocenzo, M., and Brunese, L. Diagnostic value of computed tomography colonography (CTC) after incomplete optical colonoscopy. (pii: S1743–9191(16)30139-X. doi: 10.1016/j.ijvsu.2016.05.053. (Epub ahead of print), PMID:27255132)*Int. J. Surg.* 2016 May 30;
41. Reginelli, A., Rossi, C., Capasso, R., Urraro, F., Cagini, L., Di Crescenzo, V., Carbone, M., D'Andrea, A., and Scialpi, M. Evaluation with multislice CT of the hilar pulmonary nodules for probable infiltration of vascular-bronchial structures. (Article in Italian). *Recenti Prog. Med.* 2013 Jul–Aug; 104: 403–405<https://doi.org/10.1701/1315.14584>