

Evidence for a Bone Marrow B Cell Transcribing Malignant Plasma Cell VDJ Joined to C μ Sequence in Immunoglobulin (IgG)- and IgA-secreting Multiple Myelomas

By Paolo Corradini, Mario Boccadoro, Claudia Voena, and Alessandro Pileri

From the Divisione di Ematologia dell' Università di Torino, Ospedale Molinette, 10126 Torino, Italy

Summary

Multiple myeloma is a B cell malignancy characterized by the expansion of plasma cells producing monoclonal immunoglobulins (Ig). It has been regarded as a tumor arising at the B, pre-B lymphocyte, or even stem cell level. Precursor cells are presumed to proliferate and differentiate giving rise to the plasma cell clonal expansion. Antigenic features and specific Ig gene rearrangement shared by B lymphocytes and myeloma cells have supported this hypothesis. However, the existence of such a precursor is based upon indirect evidence and is still an open question. During differentiation, B cells rearrange variable (V) regions of Ig heavy chain genes, providing a specific marker of clonality. Using an anchor polymerase chain reaction assay, these rearranged regions from five patients with multiple myeloma were cloned and sequenced. The switch of the Ig constant (C) region was used to define the B cell differentiation stage: V regions are linked to C μ genes in pre-B and B lymphocytes (pre-switch B cells), but to C γ or C α in post-switch B lymphocytes and plasma cells (post-switch B cells). Analysis of bone marrow cells at diagnosis revealed the presence of pre-switch B cells bearing plasma cell V regions still joined to the C μ gene. These cells were not identified in peripheral blood, where tumor post-switch B cells were detected. These pre-switch B cells may be regarded as potential myeloma cell precursors.

Multiple myeloma is a B-cell malignancy characterized by a clonal expansion of plasma cells producing monoclonal Ig. Several lines of evidence suggest B lymphocyte involvement in the pathogenesis of multiple myeloma. First, B lymphocytes, or even pre-B lymphocytes expressing the same idiotype as myeloma protein have been found in bone marrow and peripheral blood (1–3). Second, malignant plasma cells expressing pre-B lymphocyte antigens have been described (4–6). Third, PBMC may show the same IgH gene rearrangement as myeloma cells (7, 8). However, the existence of a myeloma cell precursor is still a subject of controversy (9, 10).

Our molecular approach involved in the use of tumor cell IgH V region as a marker of clonality. The antigen specificity in B lymphocyte clones is derived primarily from the rearrangement of V, D, and J segments of H chain genes. Assembled variable regions (VDJ) contain three CDR that codify for the antigen-binding site. These regions are unique to each B cell clone (11), and can be used to define oligonucleotide primers and probes characteristic of the tumor cell. After antigenic stimulation, B lymphocytes switch the IgH isotype by deleting the C μ gene, without changing the VDJ-encoded specificity. Hence, pre-B and B lymphocytes (pre-switch B cells) can be discriminated from post-switch B lymphocytes

and plasma cells (post-switch B cells) because of their C region usage.

We reasoned that myeloma cell precursor may be located at the pre-switch B cell stage, and be identifiable as a cell in which the IgH transcript is composed of plasma cell VDJ still joined to C μ gene. The sequence of the plasma cell VDJ was obtained by using an anchor PCR assay (12), whereas the switch region was analyzed by means of a standard PCR protocol (13).

Materials and Methods

Patients and Nucleic Acid Extraction. Four cases of multiple myeloma were evaluated at diagnosis and one at relapse. Two patients had an IgG (MM-20 and MM-23) and three an IgA (MM-15, MM-67, and MM-125) monoclonal protein. Specimens were obtained during standard diagnostic procedures. Bone marrow plasma cells and lymphocytes were separated on a Ficoll-Hypaque density gradient. DNA was obtained by cell lysis, phenol extraction, and ethanol precipitation. RNA was isolated by the guanidinium isothiocyanate and cesium chloride centrifugation method (14).

Synthesis of cDNA and Tailing Reaction. Two syntheses of cDNA were performed: (a) total RNA was reverse transcribed using an isotype-specific primer (α or γ) to have the Ig cDNA; and (b) total

RNA was reverse transcribed into total cDNA using an oligo dT-15 primer. 20 µg of total RNA was reverse transcribed with 20 pmol of reverse transcription primer (γ : GACCGATGGGCCCTTGGTGGAAGC [15], or α : GACCTGGGGCTGGTCGGGGATGC [16]). A 50-µl reaction was carried out in 10 mM dithiothreitol, 1 mM dNTPs (Pharmacia LKB Biotechnology, Uppsala, Sweden), 1× reverse transcriptase buffer (50 mM Tris-HCl, 6 mM MgCl₂, 40 mM KCl), final concentration, adding 20 U of ribonuclease inhibitor (RNasin; Promega, Madison, WI), and 400 U Moloney MuLV reverse transcriptase (Superscript, GIBCO BRL, Gaithersburg, MD). The reaction was incubated 1 h at 37°C. The Ig cDNA was then tailed in 200 µM dATP, 1× terminal deoxynucleotidyl transferase (TdT) buffer, final concentration, adding 30 U of TdT enzyme (GIBCO BRL), and incubated 10 min at 37°C.

PCR Conditions. Three reactions were performed. The anchor-PCR assay (Fig. 1) included PCR-1 and -2, whereas PCR-3 was a standard amplification. For PCR-1, 20% of dA-tailed Ig cDNA was amplified in 10% DMSO, 200 µM dNTPs, 1× Taq buffer (50 mM KCl, 10 mM Tris-HCl pH, 8, 1 mM MgCl₂, 1% [wt/vol] gelatin) final concentration, adding 2.5 U of Taq DNA polymerase (Perkin Elmer Cetus Corp., Norwalk, CT), 10 pmol of RE-TTTT (GGTGATCGATGAATTCTTTT TTTT TTTT TTTT TTTT TTTT), 20 pmol of RE (GGTGATCGATGAATTCTT), and 20 pmol of JH-RE2 (GGATGGTACCAAGCTTTGAGGAGACGGTGACCA) primers in a final volume of 50 µl. Using a DNA thermal cycler (Perkin Elmer Cetus Corp.) the tailed cDNA was amplified by linking two files together. File A: 94°C for 1 min; 50°C for 3 min; 72°C for 40 min; 1 cycle. File B: 94°C for 1 min; 56°C for 2 min; 72°C for 1 min; 40 cycles, followed by a 7-min final extension at 72°C. The 5' primers (RE-TTTT, RE) contained ClaI and EcoRI restriction enzyme sites, whereas the 3' primers (JH-RE2, RE2) had KpnI and HindIII sites. The PCR product was electrophoresed on 1.5% low melting point agarose and the 500-bp band cut out under shortwave UV light. For PCR-2, the slice of low melting point agarose was melted at 68°C and 5–10% reamplified in the conditions described above, except for 2 mM MgCl₂ concentration in the 1× Taq buffer and 20 pmol of RE and RE2 primer (GGATGGTACCAAGCTTTGA), instead of using RE-TTTT and JH-RE2. File C was used for this PCR: 94°C for 1 min; 54°C for 30 s; 72°C for 30 s; 32 cycles, followed by a 7-min final extension at 72°C. For PCR-3, the amplification was used to detect the presence of clonal pre-switch B cells in bone marrow and peripheral blood RNAs. 5 out of 50 µl of total cDNA was amplified in the same PCR-2 conditions, except for the 1.5 mM MgCl₂ concentration in the 1× Taq buffer. The 5' primers were derived from CDRII, and were specific for each patient (Table 1), whereas the 3' primer was from the C μ first exon (μ -1: GTTGGGGCGGATG-

CACT [17]). File C was used at 61–64°C annealing temperature for 48–55 cycles.

Oligonucleotide Synthesis. Oligonucleotides were chemically synthesized with a DNA synthesizer (model 391 PCR-MATE EP; Applied Biosystems, Inc., Foster City, CA) on a 0.2-µmol scale, according to the manufacturer's instructions.

Cloning and Sequencing. The PCR product was digested with EcoRI and HindIII enzymes according to the manufacturer's instructions at 37°C for 3 h. Digested DNA was electrophoresed through a 1.5% low melting point agarose gel, the 500-bp band cut out, phenol/chloroform-extracted and precipitated in 2 vol of ethanol, and then cloned in a Bluescript SK[®] vector (Stratagene, San Diego, CA) according to standard procedures (14). Restriction enzyme analysis was carried out on plasmid DNAs prepared by the alkaline lysis method (14). Miniprep plasmid DNAs were sequenced with the Sequenase version 2.0 kit (United States Biochemicals Corp., Cleveland, OH) according to the manufacturer's recommendations. Sequence analysis was performed using the PC-GENE programs (IntelliGenetics, Inc., Mountain View, CA).

Southern Blot and Direct Sequencing Analysis. 20% of the PCR product was analyzed by agarose gel electrophoresis. The amplified DNA was blotted overnight onto nylon membranes (Stratagene), and hybridized to CDRIII probes end-labeled with γ [³²P]ATP (14).

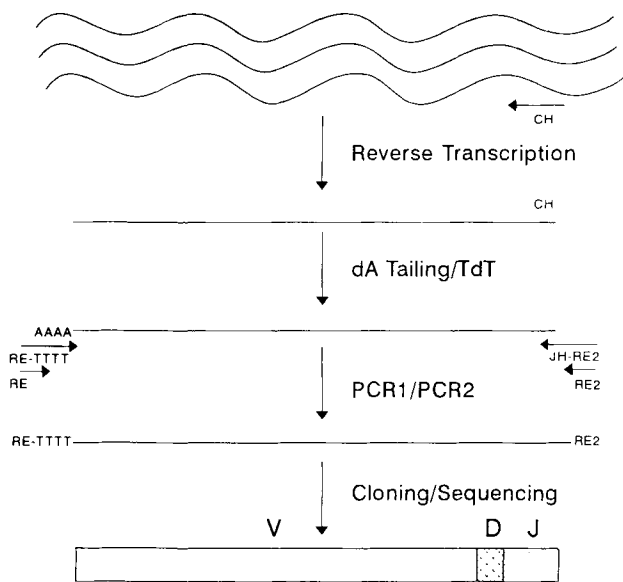
The nucleotide sequence of the junction between the VDJ and C μ genes was determined by direct sequencing of amplified DNA. 5 µl of bone marrow total cDNA was amplified using CDRII and μ -5 (GGGAATTCAAGGAAGTCCTGTGCGAG [17]) primers. μ -5 is located 42 bp from μ -1 in the 3' direction. Amplification conditions were as described above. The CDRIII oligonucleotides (case MM-15 and MM-25) were also used as sequencing primers after end-labeling with γ -[³²P]ATP. Sequencing reactions were performed as previously described (18). Reaction products were run on a 6% acrylamide/urea gel, fixed in 10% acetic acid, and then exposed at -70°C for varying periods of time.

Results

The anchor-PCR assay is outlined in Fig. 1 (19). Briefly, Ig cDNA was synthesized from bone marrow total RNA using primers specific for plasma cell C region, and then a dATP tail was added by TdT enzyme to the 3' end. The dA-tailed Ig cDNA was amplified twice, using two sets of primers (JH-RE2, RE-TTTT, and RE, RE2). Finally, the amplified VDJ were cloned and sequenced. For each patient 10–20 clones were sequenced. The first sequencing gel analysis was per-

Table 1. Tumor-specific Primers and Probes

Patients	CDRII 5' primer	Distance	CDRIII probe
MM-15	TTTCAGACCGAAGTCCGAGT	138	AGACTGAGGGCCAGTTGTTAC
MM-20	CTACATCAGTGGTACTGGTAATTC	126	GGTCTCTCCCCATACTGACTA
MM-23	CCTTTAGCAGATATGATCTC	124	TTGTTTGGTGCGCATATCGG
MM-67	ATAAGTGGAAAGTGGCATTTC	130	GGACGGGGAACTTGGATA
MM-125	CGTGATGGGAGTAGTACAAG	136	GGACATAACAGTGGCTGG



Total RNA

Ig cDNA

PCR Product

Figure 1. Schematic representation of the anchor PCR assay. Bone marrow total RNA was reverse transcribed into Ig cDNA using an isotype-specific primer (CH), and then dA-tailed by TdT enzyme for anchor PCR. The tailed cDNA was amplified twice (PCR1/PCR2) by using two sets of primers (JH-RE2 with RE-TTTT, and RE and RE2). The amplified VDJs were then cloned and sequenced. After sequencing analysis, the CDR were identified and tumor-specific primers and probes were generated.

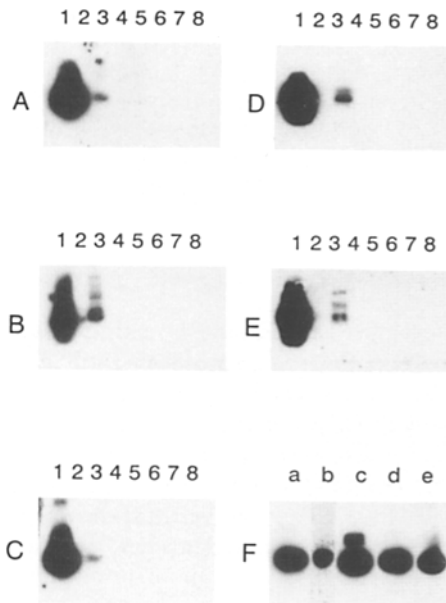
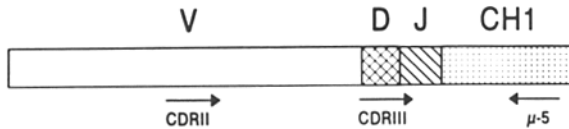


Figure 2. PCR-based detection of pre-switch B cells. Detection of clonal pre- and post-switch B cells in bone marrow and peripheral blood total cDNA of five myeloma patients. The amplifications were performed using CDRII 5' primer and different C region 3' primers. Amplified DNAs were then hybridized to CDRIII probes. (A) MM-15 patient; (B) MM-20 patient; (C) MM-23 patient; (D) MM-125; and (E) MM-67. Lane 1, bone marrow total cDNA amplified with γ or α primers; lane 2, empty; lane 3, bone marrow total cDNA amplified with μ -1 primer; lane 4, peripheral blood total cDNA amplified with μ -1 primer; lane 5, empty lane; lanes 6 and 7, polyclonal cDNAs; and lane 8, no DNA control. (F) lane a, MM-15 peripheral blood total cDNA amplified with α primer; lane b, MM-20 peripheral blood total cDNA amplified with γ primer; lane c, MM-23 peripheral blood total cDNA amplified with γ primer; lane d, MM-125 peripheral blood total cDNA amplified with α primer; and lane e, MM-67 peripheral blood total cDNA amplified with α primer.

formed to examine the 3' part of the VDJ to assess how many clones were identical, and this number corresponded to the percentage of tumor cell infiltration in the specimen. A second analysis then gave the complete sequence of the three CDRs. The assay specificity was tested for each patient, generating clone-specific primers and probes from the CDR sequences. No amplification products were detectable when several polyclonal DNAs were used as templates (19). However, further confirmation of myeloma specificity of the cloned VDJ sequence was achieved by using the clone insert, containing the supposed tumor VDJ, as a probe. Patient genomic DNA, was digested with HindIII restriction enzyme, and hybridized under stringent conditions with this probe. Southern blot analysis showed a rearranged band, confirming that the cloned VDJ really represented the tumor VDJ, and excluding any nonspecific bias during the amplification (data not shown).

Bone marrow total RNAs from each patient were reverse transcribed in total cDNA, and analyzed by using tumor-specific oligonucleotides to detect pre-switch B cells having the same plasma cell VDJ. Total cDNAs were tested for the presence of tumor CDRs attached to the first exon of $C\mu$ gene. A PCR amplification was carried out using CDRII and μ -1 primers. A second PCR was performed with γ or α 3' primer to reveal post-switch B cells in the same cDNA. Then, the amplified DNAs were hybridized to a CDRIII probe. All cases revealed an intense band corresponding to the post-switch B cells, amplified by the second PCR, and one corresponding to pre-switch B cells bearing the $C\mu$ gene (Fig. 2, A-E). To control the assay specificity, total cDNAs from two polyclonal LN were always used as a negative controls and no bands were detectable even after a long period of exposure. To further confirm Southern blot results, the bone marrow cDNA of MM-15 and MM-125 cases were

A



B

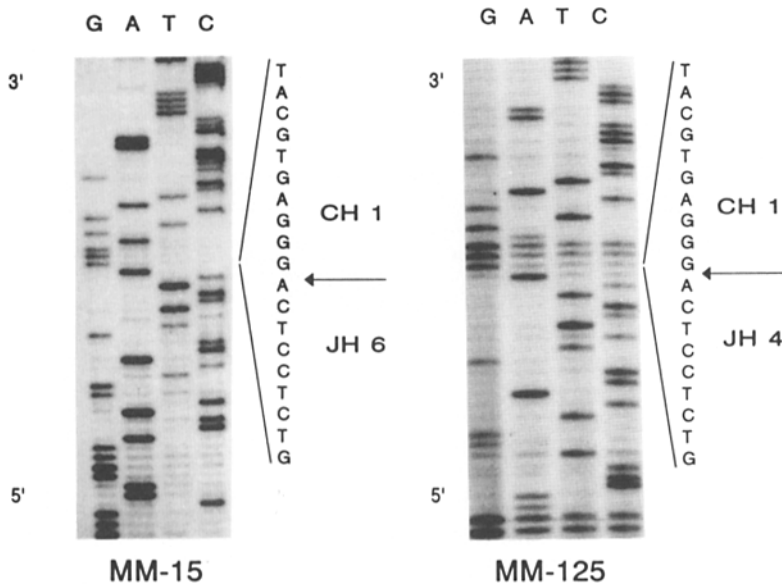


Figure 3. Demonstration by direct sequencing of the junction of the plasma cell VDJ with the $C\mu$ sequence. (A) Schematic representation of primers used in the amplification (CDRII, μ -5) and sequencing (CDRIII) of the VDJ- $C\mu$ junction. (B) After the amplification of bone marrow total cDNA (case MM-15, and MM-125), direct sequencing analysis showed the joining of the 3' end of plasma cell VDJ (JH6 and JH4) to the first exon (CH1) of $C\mu$ gene. (Arrows) Junction point between JH6, JH4, and CH1. G, A, T, C (dideoxynucleoside triphosphates) represent the order of loading of the sequencing gel.

reamplified using CDRII and μ -5 primers. The use of μ -5 allowed the amplification of a longer fragment of $C\mu$ first exon. PCR products were then sequenced and the junction of tumor VDJ to the $C\mu$ gene was definitively demonstrated (Fig. 3). 80 bp of the $C\mu$ gene was read and showed a germline configuration.

Our analysis was also extended to the peripheral blood total cDNA samples. The amplifications performed with CDRII and μ -1 primers did not detect the presence of clonal pre-switch B cells. Conversely, PCR reactions performed with CDRII and α or γ 3' primers revealed the presence of tumor post-switch B cells (Fig. 2 F).

Discussion

The involvement of pre-B and/or B lymphocytes in multiple myeloma has been mainly deduced from the observation that they share some of the plasma cell antigenic features (1-5, 20) and that myeloma-specific IgH gene rearrangements take place in PBMC (7, 8). However, some technical aspects have prevented such involvement from obtaining universal acceptance. For instance, myeloma protein may nonspecifically bind to Fc receptors of PBL, which may

then erroneously be recognized as neoplastic by anti-idiotypic antibodies (21). In addition, the specificity of these antibodies has been shown to be limited, since they react with more than one myeloma protein and also recognize several normal B cell clones (22, 23). Finally, the presence in the peripheral blood of myeloma-specific IgH gene rearrangements has been ascribed to plasma cells (8, 9). For these reasons, therefore, the B lymphocyte origin for multiple myeloma has thus been disputed, and it has been regarded as a tumor originating at plasma cell level.

We devised an experimental strategy based upon the molecular analysis of IgH genes. The CDRs provided a specific marker of clonality, whereas the presence of $C\mu$ gene allowed the distinction between pre- and post-switch B cells (24). The hypothesis that a malignant plasma cell derives from a pre-switch B cell implies the existence of a B cell in which the tumor VDJ is still joined to $C\mu$ gene. We showed that the VDJ sequences identified by our assay represent the malignant plasma cell VDJ, and then we looked for a clonal pre-switch B cell population. Analysis of bone marrow RNAs demonstrated the existence of such a population. Conversely, these pre-switch B cells were not found in the peripheral blood, where tumor post-switch B cells were detected. It should

be pointed out that pre-switch B cells in the bloodstream could be too few to be detected by our assay.

An IgH transcript in which the VDJ is still attached to C μ sequences can be mainly attributed to pre-B and/or B lymphocytes, even though memory B lymphocytes might be included. It has been reported that memory B lymphocytes may coexpress C μ and C γ or C α genes (25, 26), i.e., they can synthesize Ig molecules with different isotype linked to the same idiotype. The switch mechanism postulated for this finding is the alternative splicing of a large Ig RNA transcript, and not the switch recombination characterized by C μ gene deletion (for a review see reference 27).

The bone marrow B cells carrying the tumor VDJ, and still expressing C μ genes (pre-switch B cells), may be regarded

as plasma cell precursors. It should be pointed out, however, that our data do not provide a direct demonstration of malignancy, and do not exclude the existence of even more immature precursors. The presence of peripheral blood cells in which the tumor VDJ sequences are linked to C α or C γ genes (post-switch B cells) leads us to speculate that these cells may be responsible for the dissemination of the disease throughout the axial skeleton.

The contamination of tumor cells in peripheral blood is lower than bone marrow, and the apparent absence of pre-switch B cells in the peripheral blood indicates that it could be an alternative source of normal stem cells for autograft procedures.

The authors are indebted to Dr. Riccardo Dalla-Favera for his assistance during various stages of the project, as well as for comments and helpful discussions.

This work was supported by the Associazione Italiana Ricerca sul Cancro (Milano, Italy) and by Consiglio Nazionale Ricerche (Progetto Finalizzato ACRO, N° 9202242.PF39). C. Voena has a fellowship from Comitato Piemontese Gigi Ghirotti.

Address correspondence to Dr. Paolo Corradini, Divisione Universitaria di Ematologia, Via Genova 3, 10126 Torino, Italy.

Received for publication 28 January 1993 and in revised form 26 May 1993.

References

1. Kubagawa, H., L.B. Vogler, J.D. Capra, M.E. Conrad, A.R. Lawton, and M.D. Cooper. 1979. Studies on the clonal origin of multiple myeloma. *J. Exp. Med.* 150:792.
2. Boccadoro, M., A. Van Acker, A. Pileri, and J. Urbain. 1981. Idiotypic lymphocytes in human monoclonal gammopathies. *Am. Immunol.* 132C:9.
3. Osteborg, A., M. Steinitz, N. Lewin, S. Bergenbrant, G. Holm, A.K. Lefvert, and H. Mellstedt. 1991. Establishment of idiotype bearing B-lymphocyte clones from a patient with monoclonal gammopathies. *Blood.* 78:2642.
4. Caligaris-Cappio, F., L. Bergui, L. Tesio, G. Pizzolo, F. Malavasi, M. Chilosi, D. Campana, B. van Camp, and G. Janossy. 1985. Identification of malignant plasma cell precursors in the bone marrow of multiple myeloma. *J. Clin. Invest.* 76:1243.
5. Epstein, J., H. Xiao, and X.Y. He. 1990. Markers of multiple hematopoietic-cell lineages in multiple myeloma. *N. Engl. J. Med.* 322:664.
6. Bergui, L., M. Schena, G. Gaidano, M. Riva, and F. Caligaris-Cappio. 1989. Interleukin 3 and interleukin 6 synergistically promote the proliferation and differentiation of malignant plasma cell precursors in multiple myeloma. *J. Exp. Med.* 170:613.
7. Berenson, J., R. Wong, K. Kim, N. Brown, and A. Lichtenstein. 1987. Evidence for peripheral blood B lymphocyte but not T lymphocyte involvement in multiple myeloma. *Blood.* 70:1550.
8. Van Riet, I., C. Heirman, P. Lacor, M. De Waele, K. Thielemans, and B. van Camp. 1989. Detection of monoclonal B lymphocytes in bone marrow and peripheral blood of multiple myeloma patients by immunoglobulin gene rearrangement studies. *Br. J. Haematol.* 73:289.
9. Clofent, G., B. Klein, T. Commes, N. Ghanem, M.P. Lefranc, and R. Bataille. 1989. No detectable malignant B cells in the peripheral blood of patients with multiple myeloma. *Br. J. Haematol.* 71:357.
10. Clofent, G., B. Klein, T. Commes, C. Vincent, N. Ghanem, G. Lenoir, M.P. Lefranc, and R. Bataille. 1989. Limiting dilution cloning of B cells with patients with multiple myeloma: emergence of non-malignant B-cell lines. *Int. J. Cancer.* 43:578.
11. Alt, F.W., T.K. Blackwell, and G.D. Yancopoulos. 1987. Development of the primary antibody repertoire. *Science (Wash. DC).* 238:1079.
12. Frohman, M.A., M.K. Dush, and G.R. Martin. 1988. Rapid production of full-length cDNAs from rare transcripts: amplification using a single gene-specific oligonucleotide primer. *Proc. Natl. Acad. Sci. USA.* 85:8998.
13. Saiki, R.K. 1990. Amplification of genomic DNA. In PCR Protocols: A Guide to Methods and Applications. M.A. Innis, D.H. Gelfand, J.J. Sninsky, and T.J. White, editors. Academic Press, Inc., San Diego. 13-20.
14. Maniatis, T., E.F. Fritsch, and J. Sambrook. 1989. Molecular Cloning: A Laboratory Manual. Cold Spring Harbor Laboratory, Cold Spring Harbor, NY. 18.85.
15. Huck, S., P. Fort, D.H. Crawford, M.P. Lefranc, and G. Lefranc. 1986. Sequence of a human immunoglobulin gamma 3 heavy

- chain constant region gene: comparison with the other human C gamma genes. *Nucleic Acids Res.* 14:1779.
16. Flanagan, J.G., M.P. Lefranc, and T.H. Rabbitts. 1984. Mechanism of divergence and convergence of the human immunoglobulin alpha1 and alpha2 constant region gene sequences. *Cell.* 36:681.
 17. Friedlander, R.M., M.C. Nussenzweig, and P. Leder. 1990. Complete nucleotide sequence of the membrane form of the human IgM heavy chain. *Nucleic Acids Res.* 18:4278.
 18. Neri, A., C.C. Chang, L. Lombardi, M. Salina, P. Corradini, A.T. Maiolo, R.S.K. Chaganti, and R. Dalla-Favera. 1991. B cell lymphoma associated chromosomal translocation involves candidate oncogene, *lyt-10*, homologous to NF- κ Bp50. *Cell.* 67:1075.
 19. Corradini, P., H. Ratech, M. Boccardo, C. Tarella, A. Pileri, and R. Dalla-Favera. 1991. General PCR-based approach for detecting minimal disease in lymphoid malignancies. In *Multiple Myeloma from Biology to Therapy*. Third International Workshop, Torino, Italy, 9–12 April 1991. A. Pileri, and M. Boccardo, editors. Litoart Press, Torino. 33–34.
 20. Omedé, P., M. Boccardo, G. Gallone, R. Frieri, S. Battaglio, V. Redoglia, and A. Pileri. 1990. Multiple myeloma: increased circulating lymphocytes carrying plasma cell-associated antigens as an indicator of poor survival. *Blood.* 76:1375.
 21. King, M.A., and J.V. Wells. 1981. Cell-bound immunoglobulin on peripheral blood mononuclear cells of patients with myeloma. *Clin. Exp. Immunol.* 45:552.
 22. Berenson, J.R., A. Lichtenstein, S. Hart, D. Palomares, and R.A. Miller. 1990. Expression of shared idiotypes by paraproteins from patients with multiple myeloma and monoclonal gammopathy of undetermined significance. *Blood.* 75:2107.
 23. Kiyotaki, M., M.D. Cooper, L.F. Bertoli, J.F. Kearney, and H. Kubagawa. 1987. Monoclonal anti-Id antibodies react with varying proportions of human B lineage cells. *J. Immunol.* 138:4150.
 24. Shimizu, A., and T. Honjo. 1984. Immunoglobulin class switching. *Cell.* 36:801.
 25. Perlmutter, A.P., and W. Gilbert. 1984. Antibodies of the secondary response can be expressed without switch recombination in normal mouse B cells. *Proc. Natl. Acad. Sci. USA.* 81:7189.
 26. Honjo, T., A. Shimizu, and Y. Yaoita. 1989. Constant-region genes of the immunoglobulin heavy chain and the molecular mechanism of class switching. In *Immunoglobulin Genes*. T. Honjo, F.W. Alt, and T.H. Rabbitts, editors. Academic Press, Inc., San Diego. 123–49.
 27. Grizmacher, C.A. 1989. Molecular aspects of heavy-chain class switching. *Crit. Rev. Immunol.* 9:173.