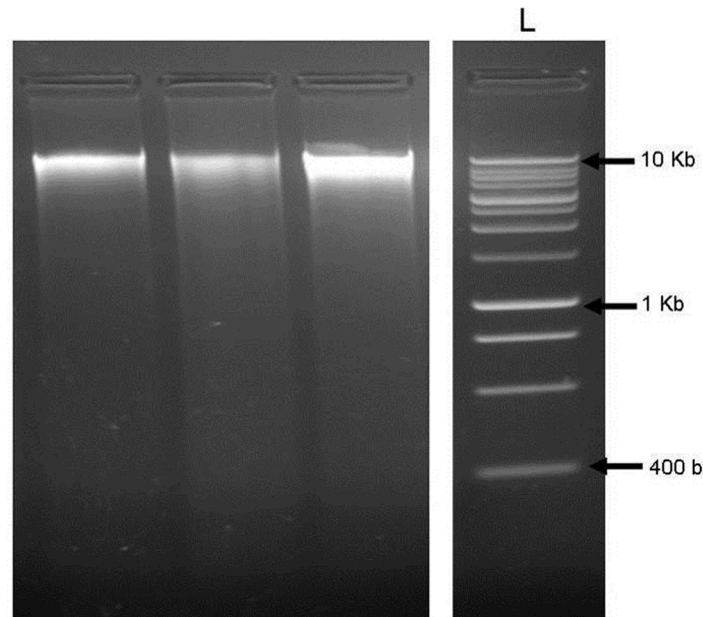


The following Appendix (Appendixes 1, 2) is the Electronic Supplementary Material of the article entitled “Characterization of organic-rich mineral debris revealed by rapid glacier retreat, Indren Glacier, European Alps” at <https://doi.org/10.1007/s11629-020-6288-8>

Appendix 1 Gel electrophoresis (1% agarose) of total DNA extracted from organo-mineral deposits collected in 2004 (n = 3). Lane L: DNA size marker (Bioline, Hyperladder I), used as reference for extracted DNA molecular weight in kb and b (kilobase and base units respectively). The figure demonstrates the high quality and low fragmentation of the extracted DNA.



Appendix 2 Denaturing Gradient Gel Electrophoresis (DGGE) profiles of archaeal (A) and bacterial 16S rRNA genes (B). White triangles indicate sequenced archaeal bands.

