



OPEN

Asbestos bodies count and morphometry in bulk lung tissue samples by non-invasive X-ray micro-tomography

Fabrizio Bardelli¹✉, Francesco Brun², Silvana Capella^{3,4}, Donata Bellis^{4,5}, Claudia Cippitelli⁶, Alessia Cedola¹ & Elena Belluso^{3,4}

The number of the Asbestos Bodies (AB), i.e. asbestos that developed an iron-protein coating during its permanence in biological tissues, is one of the most accessible markers of asbestos exposure in individuals. The approaches developed to perform AB count in biological tissues are based on the manual examination of tissue digests or histological sections by means of light or electron microscopies. Although these approaches are well established and relatively accessible, manual examination is time-consuming and can be reader-dependent. Besides, approximations are applied because of the limitations of 2D readings and to speed up manual counts. In addition, sample preparation using tissue digests require an amount of tissue that can only be obtained by invasive surgery or *post-mortem* sampling. In this paper, we propose a new approach to AB counting based on non-destructive 3D imaging, which has the potential to overcome most of the limitations of conventional approaches. This method allows automating the AB count and determining their morphometry distribution in bulk tissue samples (ideally non-invasive needle biopsies), with minimal sample preparation and avoiding approximations. Although the results are promising, additional testing on a larger number of AB-containing biological samples would be required to fully validate the method.

Asbestos is well known to induce several lung diseases, including asbestosis, pleural plaques, malignant mesothelioma, and lung cancer^{1–4}. Although the production and commercialization of asbestos is strictly regulated world-wide, and it is officially banned in most countries, the weathering of existing asbestos products and naturally occurring asbestos make asbestos a current global health risk, with hundreds of thousands deaths per year^{5,6}. In addition, the peak of mortality is yet to come because of the long latency time of mesothelioma^{7–11}, which ranges between 20 and 40 years, on average¹².

Asbestos bodies (AB) are the result of a biomineralization process taking place on asbestos in biological tissues. This process causes Fe-proteins and other organic and inorganic material to cluster around asbestos. Asbestos bodies were believed to be the organism effort to isolate the foreign fibres from the surrounding tissues^{13,14} to prevent the development of asbestos-related diseases. However, later researchers suggested that they might enhance the cytotoxic properties of asbestos. In particular, based on the results of in vitro (cell cultures) and in vivo (animal) studies, it was showed that AB are able to induce the generation of free radicals^{15,16}, double strand breaks in the DNA¹⁷, and that the iron contained in the coating is catalytically active^{15,18,19}.

Beyond their possible role in the pathogenesis of asbestos-related diseases, the number of AB in the lungs is the most accessible indicator to assess the asbestos exposure in individuals²⁰. However, the AB number in the lungs is a coarse estimate of the actual asbestos fibre burden in the lungs²¹. In fact, the number of AB can increase after the last exposure to asbestos, as, in time, more fibres become coated. Moreover, it was observed that the AB preferentially form on the longer (> 5–10 µm), thinner (< 0.5 µm)²², and more biopersistent amphiboles fibres (amosite, antophyllite, crocidolite, tremolite, and actinolite), which were also observed to be the

¹Institute of Nanotechnology, CNR-Nanotec, Roma, Italy. ²Department of Engineering and Architecture, University of Trieste, Trieste, Italy. ³Department of Earth Sciences, University of Torino, Torino, Italy. ⁴Interdepartmental Centre for the Study of Asbestos and Other Toxic Particulate, University of Torino, Torino, Italy. ⁵Department of Pathological Anatomy, Ospedale degli Infermi, Biella, Italy. ⁶Division of Respiratory Diseases, Department of Clinical and Molecular Medicine, Sant'Andrea Hospital, Sapienza University, Roma, Italy. ✉email: fabrizio.bardelli@gmail.com

most carcinogenic²². In addition, though the AB do form on chrysotile fibres too²³, these can undergo to fragmentation, so that the organism's clearance mechanisms are able to remove most of them. As a result, chrysotile usually accounts for a minor fraction of asbestos in the lungs^{24,25}. Bodies similar to the AB can also form on non-asbestos fibres (e.g. mica and rutile fibres), and, in this case, the term ferruginous body is used. However, even when contamination by other fibres is present along with asbestos exposure, the AB usually account for more than 90% of all coated fibres^{20,26}.

In the years, several approaches have been established and refined to extract and estimate the number of AB in unit of weight (g) or volume (cm³) of wet or dry autoptical (post-mortem) lung tissue samples, broncho-alveolar lavage (BAL) and sputum samples, needle, transbronchial or thoracoscopic biopsy samples^{27–31}.

Quantitative analysis performed on lung tissues is the standard method to assess the AB concentration in the lungs. Nevertheless, it can only be performed after autopsy, or it requires a lung biopsy. Needle biopsies, however, produce an amount of biological tissue that is usually insufficient for AB count with conventional methods, and thoracoscopic biopsies require invasive surgery. On the other hand, BAL and sputum samples only reveal AB from the alveolar airspace, and AB are not present in sputum when their burden is lower than ~ 10,000 AB/g of dry lung tissue³¹.

Besides, sample preparation is one of the critical point of conventional AB counting approaches. Depending on the sampling method, lung tissues can be prepared in two ways. In the first, the tissue is removed by chemical digestion or ashing, followed by a variable number of ultrasonication, filtration, washing (with distilled water and hydrochloric acid), and centrifugation steps to recover and enrich the AB in the resulting precipitate. This is deposited on sample holders (grids) for transmission electron microscopy (TEM), or on porous membranes for observation with optical microscopy (OM) or scanning electron microscopy (SEM). The second approach consists in fixing the tissue samples (usually in formalin or alcohol), and then embedding them in paraffin. A microtome is then used to cut thin slices (usually 3–6 µm-thick) suitable for OM observations from the paraffin-embedded tissue blocks. Thinner slices (50–100 nm-thick), suitable for TEM observations, are obtained by using an ultra-microtome and epoxy-embedded tissue blocks.

Each of the above sample preparation approaches has limitations and disadvantages. For example digestion in potassium hydroxide, sodium hypochlorite or formamide, or low temperature ashing have been shown to alter or destroy the AB^{32,33}. The use of ultrasound to help removing the tissue may fragment the AB, altering their size distribution and possibly resulting in higher counts²¹. Some AB may be lost during centrifugation and filtration steps that are used to concentrate their content²¹.

Another critical aspect of conventional methods is that they eventually all rely on the observations of a human reader for the actual AB count by optical or electron microscopies (OM, SEM, or TEM). Because manual observations can be extremely time-consuming, approximations are often applied. These usually consist of counting the AB on areas of the AB supports (porous membrane, OM slide, or TEM grid) much smaller than their whole area, and extend the result on the rest of the area assuming uniform distribution. Optical microscopy is undoubtedly the most accessible and less time consuming among the reading techniques. In addition, sample preparation for OM observations is easier and larger areas of tissue slices (~ 1–4 cm²) can be probed because of the lower magnification achievable. Electron microscopies allow detecting also uncoated fibres and determining their chemical composition by energy dispersive spectroscopy (EDS)³⁴. Transmission electron microscopy can also reveal their crystallographic structure and level of crystallinity by performing selected area electron diffraction (SAED)^{34,35}. On the other hand, electron microscopies are less accessible and require complex and invasive sample preparation, as they always require the removal of the biological tissue to achieve good quality images (contrary to OM, which can be performed also on histological sections). Besides, the observations are more time consuming because the probed area is much smaller (~ 100–1000 µm², depending on the magnification for SEM, less for TEM). A further downside is that the results obtained have higher variability between laboratories and are therefore more difficult to compare.

In this paper, we report on a novel approach to AB counting based on X-ray phase-contrast micro-tomography (XPCµT) and requiring non-invasive sample preparation, which may overcome most of the limitations of the conventional approaches discussed above. X-ray tomography is a non-destructive, tridimensional imaging technique that, thanks to the large penetration depth of hard X-rays (> 1 keV), can be applied to macroscopic (bulk) biological samples up to few centimeters in size. Although radiation damage to the samples may occur with the high flux provided by 3rd generation synchrotron source (by heating), negligible damage is expected when using monochromatic and relatively high-energy X-ray beams (> 10 keV) on thin (< 10 mm) biological samples, as is the case of the measurements reported in this work. Furthermore, in contrast with conventional methods, X-ray imaging requires minimal sample preparation (virtually none). The combination of 3D imaging and automated counting routines allows to count all AB in a given lung tissue volume, without any a priori knowledge of the AB morphology, which is instead required when estimating the number of AB in 2D images (see “Materials and methods” section). A crucial advantage of performing AB count with automated routines is that the counting is reader-independent and much less time-consuming, particularly in case of samples with high content of asbestos. For best results, in this proof-of-concept work synchrotron radiation was used as hard X-ray source to perform micro-tomography. However, efficient commercial laboratory X-ray sources and tomographs with the ability to work in the hard X-rays energy range and reach sub-micrometric resolutions are becoming available. In addition, in this work, phase-contrast tomography was used in place of conventional absorption tomography, with the aim of imaging the lung tissue along with the AB. However, as AB have a relatively high mass density with respect to the lung tissue, conventional absorption tomography would suffice to perform AB counts.

Case	Age	Sex	Occupation	Exposure period (years)	Disease
A	80	F	Fibre cement plant	>10	AS (grade 4), PP, LC
B	81	M	Fibre cement plant	27 (1955–1982)	AS (grade 3), PP, MM
C	85	M	Steel plant	22 (1962–1984)	AS (grade 4), PP, MM
D	87	M	Asbestos mine	35	AS (grade 4), PP, SS, SC

Table 1. Samples' description. AS asbestosis (grading established according to Craighead et al. 1982³⁶, PP pleural plaques, MM malignant mesothelioma, LC lung cancer, SS siderosis, SC silicosis.

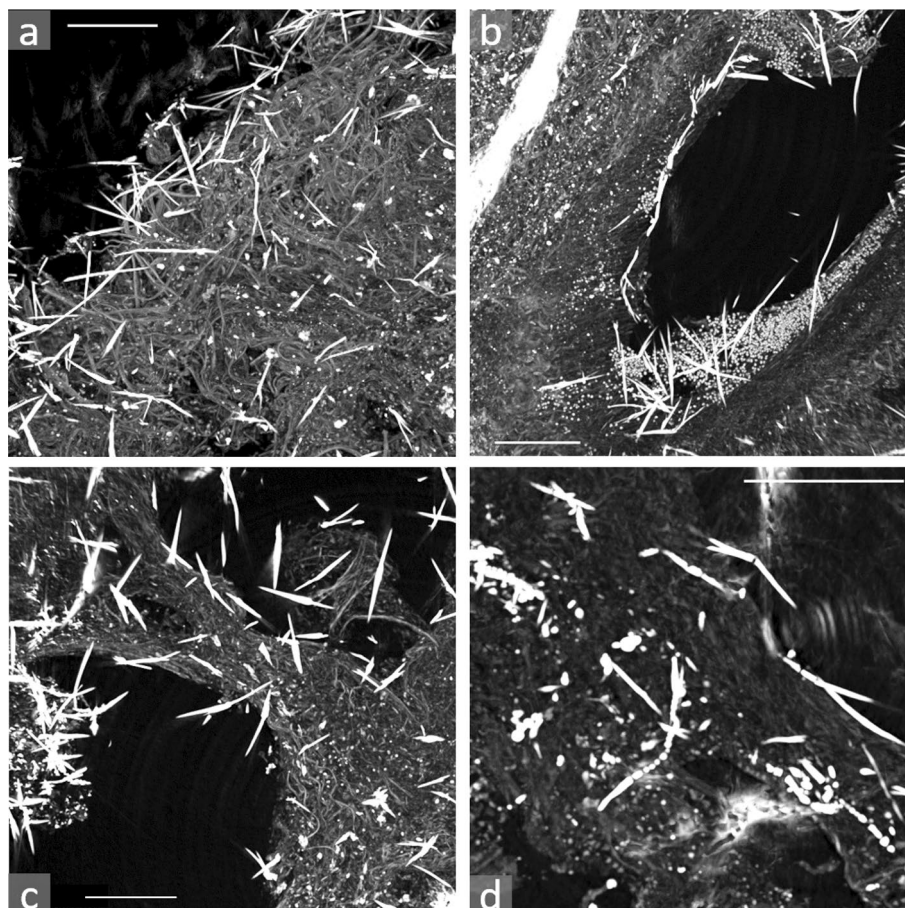


Figure 1. XPC μ T data acquired at the I13-2 beamline at the Diamond light source on lung tissue fragments embedded in paraffin. Brighter grey levels correspond to more absorbing (i.e. denser) material. For ease of view, the volumes are shown as projections on a plane of 300 slices, each 0.332 μ m-thick (total thickness \sim 99 μ m). In all images, several AB can be clearly identified as the white elongated object. (a) *Sample A* AB in are visible along with lung structures, such as bronchioles and alveoli. (b) *Sample C* an alveolar sac with AB accumulating on its walls, preferentially at its end, where hypercellularity occurs. (c) *Sample D* alveoli or bronchioles with AB penetrating the lung parenchyma. (d) *Sample A* magnification showing a variety of typical AB with sheathlike or beaded coatings. In all images, the scale bars are 100 μ m long and the pixel size is 0.332 \times 0.332 μ m².

Results

X-ray phase-contrast micro-tomography was performed on fragments of formalin-fixed paraffin-embedded lung tissue blocks that belonged to four workers subjected to prolonged occupational exposure to asbestos (Table 1). Three tissue fragments (indicated as volumes, in the following) of size 0.83 \times 0.83 \times 0.7 mm³ were imaged for each sample. The size of the voxels (i.e. 3D pixels) was \sim 0.332 \times 0.332 \times 0.332 μ m³. The spatial resolution was roughly double that of the voxel size³⁷. Representative tomographic data of lung samples are shown in Fig. 1, where volumes of \sim 0.495 \times 0.495 \times 0.1 mm³ are shown projected on a plane for easy of view. The images are in grey levels: darkest levels correspond to lowest densities, brightest to highest ones. The AB can be clearly identified as the

Sample	AB (cm ⁻³)	AB* (g _{dw} ⁻¹)	AB(OM) (g _{dw} ⁻¹)	AB(SEM) (g _{dw} ⁻¹)	Length (μm)	Width (μm)	Volume (μm ³)
A	2.60 ± 0.64 × 10 ⁶	12.4 × 10 ⁶	48.0 × 10 ³	11.9 × 10 ⁶	22.5	3.6	153
B	2.35 ± 0.50 × 10 ⁶	11.1 × 10 ⁶	23.8 × 10 ³	0.36 × 10 ⁶	23.6	3.3	133
C	1.43 ± 0.98 × 10 ⁶	6.80 × 10 ⁶	34.4 × 10 ³	18.4 × 10 ³	20.8	3.5	131
D	2.07 ± 1.17 × 10 ⁶	9.84 × 10 ⁶	56.1 × 10 ³	12.7 × 10 ³	19.4	3.6	107

Table 2. Average number of AB and morphometry (length, width, and volume) for each sample. The number of AB derived from XPCuT measurements is reported per cubic centimeter (AB/cm³) and converted per gram of dry weight of tissue (AB*/g_{dw}), using Eq. (1). The number of AB estimated by OM on digested tissues samples (AB/g_{dw}) are also reported for comparison. The errors on the numbers of AB correspond to the standard deviation calculated on three different volumes for each sample.

white (i.e. higher density), high aspect ratio objects. The dark round-shaped holes have dimensions compatible with lung structures, such as respiratory bronchioles, alveolar ducts, atriums, or alveolar sacs (average diameter of 250–300 μm, when inflated). Thanks to the phase-contrast mode that enhances the small density variations of the biological tissues, the capillary beds surrounding the alveolar sacs can also be seen (Fig. 1a). The ubiquity of the AB in the imaged volumes reflects the high asbestos burden in the tissue samples, but is also due to the relatively large equivalent thickness of the volumes shown in Fig. 1: about 100 μm-thick compared to the 3–6 μm-thick histological sections commonly used in optical microscopy analyses. The tomograms reveal that the AB accumulate on the walls of the alveoli, where hypercellularity occurs, as can be seen at the end of the alveolar sac shown in Fig. 1b. These cells are likely to be mononuclear macrophages or neutrophils that migrated in AB-rich areas. Higher magnification (Fig. 1d) reveals the typical morphology of the AB, i.e. the sheath-like protein layer that develops around the asbestos fibres, which can be often beaded or segmented (Fig. 3d)^{32,38,39}.

Asbestos bodies' count. The amount of AB per cubic centimeter of lung tissue (AB/cm³) as determined by X-ray tomography is reported in Table 2 for each sample. The numbers reported in Table 2 represent the average of three volumes for each sample. The standard deviations associated to the AB numbers are as high as 50% of the values, reflecting the heterogeneity of the AB distribution in the lung tissues. The number of AB/cm³ falls within the same order of magnitude for all samples (2.60–1.43 × 10⁶/cm³).

The relation between AB/cm³ and AB/g_{dw} was determined by Roggli and Pratt⁴⁰ and is reported in the following equation:

$$N_{gdw} = N_g \times D_{dw} = \frac{N_c}{V_c \times V_s \times O_c \times R_{wv}}, \quad (1)$$

where N_{gdw} is the number of AB per gram of dry weight of lung tissue (i.e. the standard way to represent the AB number in the tissues), N_g is the number of AB per gram of wet weight of lung tissue, D_{dw} is the wet to dry weight conversion factor, N_c is the number of AB in a given formalin-fixed paraffin-embedded lung tissue volume (in the original paper by Roggli and Pratt⁴⁰, N_c was the number of AB in an iron-stained histological section), V_c is the lung tissue volume (in the original paper it represented the area times the thickness of the lung tissue section), O_c is the orientation correction factor, R_{wv} is the wet weight to volume ratio of the fixed lung tissue, and V_s is the shrinkage correction factor from formalin fixed to paraffin-embedded tissue. The last factors (R_{wv} and V_s) were assumed to be the same as those calculated by Roggli and Pratt⁴⁰ (respectively 0.916 g/cm³ and 2.3, dimensionless). The wet to dry tissue correction factors (D_{dw}) were calculated and resulted close to 10. The sample volume (V_c) can be calculated from tomographic data with sub-micrometric precision (corresponding to the size of the voxels).

The orientation correction factor (O_c) was introduced by Roggli and Pratt⁴⁰ in Eq. (1) to take into account AB with out-of-plane orientations in tissue thin-sections suitable for OM observations (3–6 μm-thick). This correction is necessary to prevent counting the same AB in subsequent tissue sections when the length of its projection orthogonal to the section surface exceeds the section thickness. This factor depends on the length of the AB and on the angle between the AB and the section surface: assuming a uniform distribution of the AB orientation respect to the section surface, O_c can be calculated if the average AB length is known, leading to an approximated AB count. In this framework, the advantage of a tomographic approach is evident, as for 3D data O_c in Eq. (1) is equal to unity, independently of the AB length and orientation, and the AB count is now exact.

The numbers of AB per gram of dry tissue (AB*/g_{dw}, Table 2) obtained converting those per tissue volume (AB/cm³, Table 2) using Eq. (1), fall within the same order of magnitude for all samples. The same occurs to the numbers of AB calculated by OM on tissue digests (AB/g_{dw}), although these are three orders of magnitude lower (Table 2). Unfortunately, due to the low amount of lung tissue available it was not possible to perform duplicate or triplicate measurements for the digested samples. Therefore, standard deviations are not available for conventional OM or SEM count and no clear relation between the trends of the two series of values can be determined. Scanning electron microscopy readings of digested samples, on the other hand, returned numbers differing by more than three orders of magnitude between samples A and B, and samples C and D (the SEM values reported for sample A and B are closer to those calculated by micro-tomography, Table 2).

Asbestos bodies' morphometry. The morphometry of each AB is automatically measured during the counting process with a precision corresponding to the size of the pixels (0.332 μm), as it is required by the

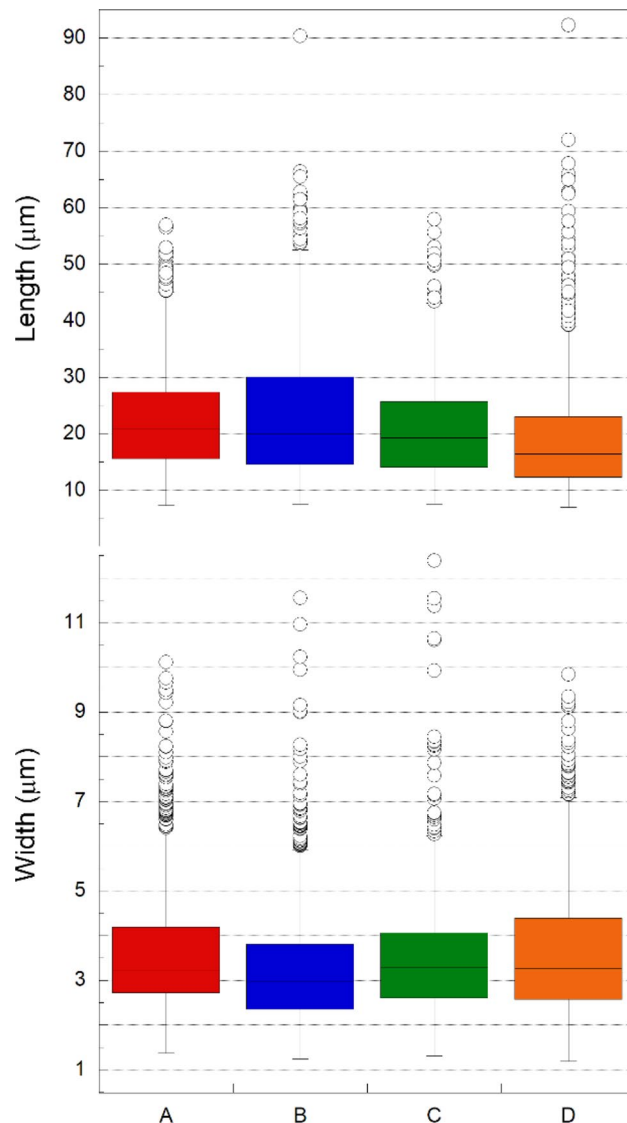


Figure 2. Box plots summarizing the distribution of the length (a) and width (b) values of the AB for samples A–C. Each box encloses 50% of the data with the median value of the variable displayed as a line. The top and bottom of the box mark the limits of $\pm 25\%$ of the variable population (i.e. the Upper and Lower Quartiles, denoted as UpQ and LowQ, respectively). The lines extending from the top and bottom of each box mark the minimum and maximum values within the data set whose value is greater than $UpQ + (1.5 \times D_{U-L})$ or less than $LowQ - (1.5 \times D_{U-L})$, where D_{U-L} is the distance between UpQ and LowQ. Any value outside of this range (outlier) is displayed as an individual point.

counting routines to distinguish the AB from other particulate matter that may be present in the lungs (see “Materials and methods” section). This allows obtaining a complete knowledge on the distribution of the AB dimensions, i.e. average, median, and dispersion, which are summarized in Table 2 and, graphically, in Fig. 2. The results show that, regardless of the sample, the average length of the AB (longest axis) falls in a narrow range (19.4–23.6 μm). The length values maybe shifted towards higher values because, to filter out low aspect ratio (low length to width ratios) particulate matter, only objects with aspect ratio higher than 3 were considered. However, length values are well described by a log-normal distribution⁴¹, as expected assuming that they originate from the fragmentation of asbestos occurring during its extraction, industrial processing, and permanence in the lungs (Supplementary Fig. S1). The transversal dimensions of the AB (average of the two shorter axes) are distributed in an even narrower range (3.3–3.6 μm), reflecting the fact that the AB develop around mineral fibres of given diameter comprised in the range of about 0.1–0.4 μm ⁴².

Discussion

Tomographic data provided tridimensional imaging of AB inside millimeter-size bulk lung tissue samples. The phase-contrast acquisition mode (opposed to conventional absorption acquisition) allowed revealing their spatial distribution and possible preferential accumulation in specific lung structures with unprecedented level of

detail for 3D imaging. The tomograms revealed that the AB tend to accumulate at the end of alveolar sacs. In the same areas, hypercellularity is observed, which may be due to an accumulation of monocytes, as alveolar macrophages, in their attempt to engulf and remove the foreign fibres. The AB not only deposit on the walls of the sacs, but also tend to penetrate them, reaching the lung parenchyma.

The numbers of AB/ g_{dw} calculated with the conventional approach (OM on tissue digests) were three order of magnitudes lower those calculated by XPC μ T per unit volume (cm^3) and then converted to g_{dw} using Eq. (1). This finding may indicate that conventional counting by OM severely underestimates the AB burden in lung tissues of exposed individuals. Indeed, AB quantification performed by SEM on samples A and B resulted in values that are closer to those obtained by XPC μ T (Table 2). On the other hand, AB count by SEM performed on samples C and D resulted in even lower values than those estimated by OM.

Unfortunately, the lung tissue material was insufficient to perform triplicate AB count with conventional digestion and SEM and OM readings, as done for tomography counting. Therefore, no information is available on the variability of the AB numbers calculated with the conventional approach, which prevents finding a reliable relationship between the two counting methods. Indeed, one of the main problems of AB counting approaches is that they are based on the assumption that asbestos is uniformly distributed in the lungs. This, however, is not true, so that samples may not reflect the average asbestos burden in the lungs. For example, it is known that the lower lobes contain more asbestos, and variability of up to tenfold among different lung sections were observed⁴³. However, even if the total volume probed with the conventional approach is larger than that probed by XPC μ T (1 g of lung tissue roughly corresponds 1 cm^3), only a small fraction of the area on which the AB are recovered (membrane or microscope slide) is read by SEM or OM to perform the counting. The result is then extended to the entire area, assuming uniform distribution. This may lead to a larger error with respect to the XPC μ T approach, in which counting is performed over the entire volume imaged and without the approximations imposed by 2D readings. To obtain a reliable assessment of the AB burden in the lungs, the optimum would be to collect several lung tissue samples from different areas of the lower lobes. In this way, the average variability should not be more than two or threefold²¹. However, this approach is very time-consuming and only possible for autoptic (post-mortem) samples. On the other hand, XPC μ T might enable the estimation of the AB burden also on living subjects through the collection of relatively non-invasive needle biopsy samples. Biopsies of non-neoplastic tissues for the lower lobes of either lungs might give a basic indication on the AB variability. From a practical point of view, the size and shape of needle biopsy samples (1–2 mm in diameter) is ideal for XPC μ T imaging, as, for mathematical reasons concerning the reconstruction algorithms, the best shape of samples for X-ray tomography is a cylinder with a diameter slightly smaller than the X-ray beam spot size (field-of-view). Considering the most common experimental setup at synchrotron beamlines or laboratory X-ray sources (i.e. incident X-ray energies and detectors), samples of 1–2 mm in diameter are suitable for tomographic scanning. Considered also the average size and distribution of ABs, this sample size was found to be adequate to image a Representative Elementary Volume (REV)⁴⁴ at sufficient spatial resolution (in general, in X-ray imaging the higher the resolution, the smaller is the area or volume that can be imaged⁴⁵). To easily obtain almost perfect cylinders, a commercial tissue microarray (TMA)⁴⁶ equipment, which is able to extract cores with few millimetre diameter from paraffin blocks, can be used. The acquisition of the data with a laboratory tomograph is then straightforward, as the samples can be mounted without further preparation and data acquisition takes few tens of minutes. Once the X-ray tomograms are acquired and reconstructed, the automated AB count takes few hours on a sufficiently fast computing infrastructure. For this proof-of-concept work the XPC μ T data were acquired with the smaller voxel size available, which reflects in smaller probed volumes. However, test acquisitions (Supplementary Fig. S2) demonstrated that larger voxel sizes ($0.8 \times 0.8 \times 0.8 \mu m^3$) and therefore larger probed volumes ($2.05 \times 2.05 \times 1.73 mm^3$) could be used. This would ensure that commercial tomographs, which may have lower resolution, could indeed be used. Higher resolution reduces errors in the counting process. On the other side, larger volumes allow increasing the statistics and reducing the uncertainties arising from the heterogeneous distribution of the AB in the tissues. More experimental work is required to determine the optimal compromise between resolution and probed volume. Finally, the relatively long computational time required for the 3D counting process (hours) can be shortened by using dedicated software and optimizing the filter algorithms.

Asbestos bodies morphometry was naturally obtained during their count, and the average length of the AB was similar for all the studied samples. This information is useful to assess the health risk, as clearance mechanisms also depend on the fibres dimensions²². This may indicate that the asbestos fibres penetrating the lungs are subjected to the same fragmentation processes, regardless of the type of asbestos and its original length, at least when dealing with biopersistent amphiboles (which are believed to form the majority of the AB⁴⁷). Accordingly, the distribution follows a log-normal curve (Supplementary Fig. S1), which is typical of fragmentation processes⁴¹. The observed morphometry of the AB is in agreement with the so called Stanton hypothesis, an empirical law stating that the AB preferentially develop on fibres longer than 10 μm and thinner than 0.5 μm ²². An explanation of the Stanton hypothesis is that, due to the size of the human macrophages (~ 15 – $20 \mu m$), only fibres longer than 10 μm can give rise to frustrated (uncomplete) phagocytosis that prevents their removal, eventually leading to chronic inflammation and triggering cytotoxic response.

As said above, the relatively low number of samples considered, prevented determining a reliable relationship between conventional and tomography counting methods, as the one determined by Roggli and Pratt⁴⁰ between the number of AB in iron-stained histological sections and the AB concentration in digested lung tissue. For this

reason, additional experimental work, considering a wider set of individuals with different degree of exposure to asbestos and a larger number of samples for each individual, is needed to fully validate the XPC μ T method.

However, also considering these limitations, this novel approach is promising, as it possesses several advantages over the conventional approaches: (1) it can be applied to living subjects through relatively non-invasive lung biopsies; (2) the data acquisition is fast and straightforward and requires minimal sample preparation; (3) the counting process can be performed directly on the tomograms using automated routines, and is therefore less time consuming and reader/laboratory independent; (4) complete information on the AB morphometry is naturally derived during the counting process.

Besides the proposal of a novel, promising approach to assess asbestos burden in biological tissues, the present work also demonstrated the potential of advanced X-ray imaging (XPC μ T) to reveal health-threatening fibres and particulate matter in biological tissues. The same techniques maybe used, for example, to study airborne particulate matter that is believed to be able to cross the brain barrier or the placenta, and that would be difficult to study by other means, without altering the samples.

Materials and methods

Lung tissue samples were obtained *post-mortem* from the lower lobes of the lungs of four former workers with a history of occupational exposure to asbestos (steel plant, asbestos mine, and asbestos-cement product plant workers, see Table 1). Informed consent was obtained from the patients at the moment of their hospitalization and permission to perform research on human lung samples was obtained by the bioethical committees of the Martini hospital (Torino, Italy) and of the University of Torino (Turin, Italy). The authors declare that the research was carried out in accordance with the approved guidelines. The human lung samples used in this research are anonymous. Only non-neoplastic tissues were collected. All workers were subjected to prolonged exposure to asbestos (23.5 ± 10.5 years on average), and had severe-grade asbestos-related diseases (asbestosis, pleural-plaques, mesothelioma or lung cancer, Table 1). Subject D was also diagnosed with silicosis (exposure to silica powder) and siderosis (exposure to Fe-oxides powder), which are typical diseases of many industrial processes. The workers were exposed to an admixture of different asbestos phases, including amphiboles (mainly crocidolite and amosite) and serpentine (chrysotile), as asbestos often contains secondary asbestos phases (such as amphiboles contaminants in chrysotile batches).

The autoptic tissue samples were preserved in buffered formalin (10%) until measurements. The sample preparation for OM and SEM observations consisted of digesting respectively 1 g and 0.25 g of lung tissue with sodium hypochlorite (NaClO, 10%), and recovering the AB by filtration through microporous membranes (3 μ m pore size for OM and 0.45 μ m pore size for SEM). The AB count was carried out by observing, for OM and SEM respectively: (i) the whole membrane at $\times 400$ magnification⁴⁸; (ii) a portion of filter (representing 0.7% of the total area) at $\times 4000$ magnification³⁴. When sufficient material was available, a mass of 2.5 g of tissue was used to determine its dry weight, after dehydrating at 60 °C for 3 days. For all samples, the asbestos burden largely exceeded the amount established by the European Respiratory Society guidelines to indicate a high level of occupational exposure to asbestos ($10^3/\text{g}_{\text{dw}}$)²¹.

X-ray micro-tomography measurements were performed in phase-contrast mode (XPC μ T) at the I13-2 beamline at the Diamond light source (UK), using a monochromatic incident X-ray energy of 14.7 keV. The phase-contrast mode allows imaging, at the same time, high and low absorbing materials (as the biological tissue and the AB) because the sensitivity to small density variations that can be measured by the phase variations of the X-rays can be orders of magnitude higher than conventional absorption variations³⁷. Samples of suitable dimensions (1–2 mm in diameter, 10–15 mm height) were cut from the formalin-fixed paraffin-embedded tissue blocks using a scalpel, and mounted on the sample holder without further preparation. A PCOedge5.5 detector with pixel size 6.5 μ m was used. The detector was coupled with a magnifying 20 \times optics, resulting in a sub-micron isotropic voxel size of $0.325 \times 0.325 \times 0.325 \mu\text{m}^3$. The detector array is composed by 2560×2560 pixels, thus a 3D volume of $2560 \times 2560 \times 2160$ voxels was reconstructed, corresponding to a probed volume of $0.832 \times 0.832 \times 0.72 \text{ mm}^3$. The volumes were stored in 32bit (real) images in TIF format. In-line free space propagation mode was used, i.e. the phase information was retrieved from the Fresnel's diffraction patterns acquired at a defined sample to detector distance. To maximize the phase-contrast contribution, the samples were analysed at a distance of 50 mm from the detector. Several scans were performed in order to target different areas of the considered samples. For each tomogram, 2400 projections were acquired over a 0–180° rotation range, with 0.3 s dwell time (corresponding to a total acquisition time of ~ 12 min per tomography). A single-distance phase-retrieval algorithm proposed by Paganin et al.⁴⁹ was applied. Data pre-processing, phase retrieval, and tomographic reconstruction were performed with the SYRMEP Tomo Project software⁵⁰.

Automated software routines were used to estimate the number of AB per unit volume. To prevent under-estimation errors due to the overlapping of the AB, counting was performed on volumes (3D) instead of their projection on a plane (2D).

For each sample, the average number of AB was estimated on sub-volumes of size $0.495 \times 0.495 \times 0.660 \text{ mm}^3$, which, for computational reasons, were further divided in five sub-volumes of size $0.495 \times 0.495 \times 0.132 \text{ mm}^3$ (Fig. 3). To introduce customized shape filters and have full control on the counting process, home-written

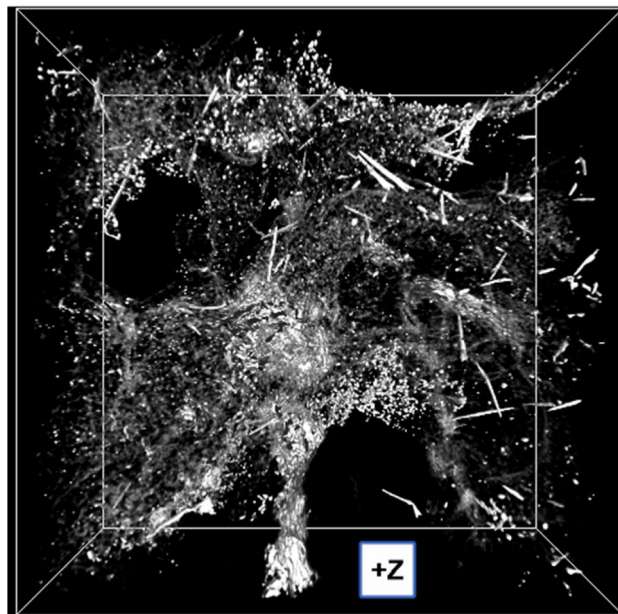


Figure 3. Perspective 3D view of a representative sub-volume of a lung tissue sample of size $0.495 \times 0.495 \times 0.132 \text{ mm}^3$ (X, Y, Z) acquired at the I13-2 beamline at the Diamond Light Source (UK) at 14.7 keV incident X-ray energy. The bounding box is shown. The size of the (isotropic) voxels is $0.332 \times 0.332 \times 0.332 \text{ }\mu\text{m}^3$.

MATLAB routines were used. The volumes were first segmented to separate the low X-ray absorbing background and biological tissue from higher absorbing objects (particulate matter and AB). Segmentation consists in selecting a range of pixel intensities (grey levels) including the objects of interest, as, physically, different pixels intensities correspond to different materials' densities (in phase-contrast mode, denser materials result in higher (i.e. brighter) pixel grey levels). Then, shape filters based on the objects geometry (size, sphericity, and solidity) were applied. Minimum and maximum size filters (in voxels) were used to exclude, respectively, the smallest particulate matter, and some larger structures often present (probably pleural thickening), which have similar grey levels as the AB. Sphericity and solidity filters were used to detect objects with high aspect ratio among those who survived to the segmentation and size filter. The first is a measure of how much an objects resembles to a sphere (i.e. equal length of the x, y, and z axes). High aspect ratio objects, as AB, are expected to have low sphericity values. The solidity is defined as the ratio between the object volume and the volume of its convex hull (i.e. the volume underlying a surface wrapping the object). Quasi-cylindrical objects, as AB, are expected to have high solidity values.

Although the choice of the contrast and shape filters settings were critical for the correct estimation of the number of AB per unit volume, it was found that the same settings could be applied to all tomographic data acquired, regardless the Case examined. As the dimensions of the AB vary in a known range, the settings of the size and shape filters should not change considerably from sample to sample, though the presence and size of other absorbing particulate matter must be checked to avoid interference with the counting process. The choice of the contrast filter setting (grey level threshold), on the other hand, depends on the experimental setup used to acquire the tomographic data, and must therefore be carefully optimized for each instrument. The filter settings used in this work were the same for all datasets and are reported in Supplementary Table S1 as a reference.

An example of the counting process workflow is shown in Fig. 4 on representative XPC μ T data projected on a plane. Some AB in Fig. 4 appear to overlap with each other, but this is only because the imaged volume is projected on a plane. If 2D imaging were performed instead of tomography, the apparently overlapping AB would have been counted as one, and, for high asbestos burden samples, most of the AB would have appeared as overlapping. This well demonstrates the advantage of tomography (3D) over conventional imaging (2D). For each volume imaged, the tomographic reconstruction and counting process took several hours on a double-CPU (INTEL-XEON) machine with 256 Gb RAM.

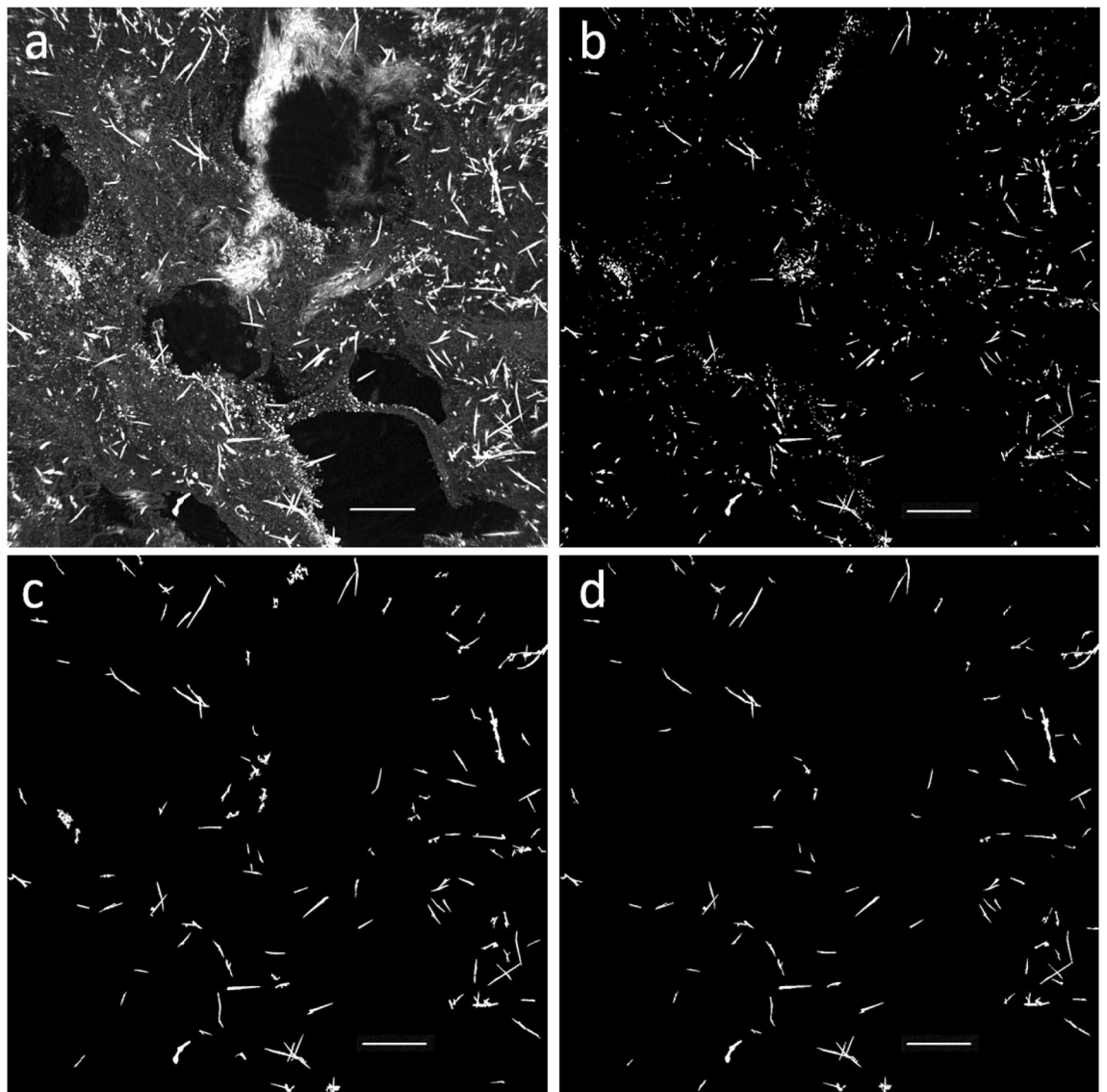


Figure 4. The counting process workflow is shown. (a) Original microtomography image projected on a plane for easy of view; (b) *Segmentation* most of the background lung tissue is removed only objects with grey levels in a chosen range survive; (c) *Size filters* only objects in a selected size range are selected, most of the smaller particulate matter or large/higher density background structures are removed; (d) *Sphericity and solidity filters* only objects with low sphericity and solidity values survive (i.e. objects with high aspect ratio are selected). The voxel size is $0.332 \times 0.332 \times 0.332 \mu\text{m}^3$ (isotropic), and the scale bars are $100 \mu\text{m}$ in length.

Received: 12 March 2021; Accepted: 6 May 2021

Published online: 19 May 2021

References

- Noonan, C. W. Environmental asbestos exposure and risk of mesothelioma. *Ann. Transl. Med.* **5**, 234 (2017).
- Uguen, M. *et al.* Asbestos-related lung cancers: A retrospective clinical and pathological study. *Mol. Clin. Oncol.* **7**, 135–139 (2017).
- Klebe, S., Leigh, J., Henderson, D. W. & Nurminen, M. Asbestos, smoking and lung cancer: An update. *Int. J. Environ. Res. Public Health* **17**, 258 (2020).
- Jones, R. N., Hughes, J. M. & Weill, H. Asbestos exposure, asbestosis, and asbestos-attributable lung cancer. *Thorax* **51**, 9–15 (1996).
- Mazurek, J. M., Syamlal, G., Wood, J. M., Hendricks, S. A. & Weston, A. Malignant mesothelioma mortality—United States, 1999–2015. *Morb. Mortal. Wkly. Rep.* **66**, 214–218 (2017).
- Kameda, T. *et al.* Asbestos: Use, bans and disease burden in Europe. *Bull. World Health Organ.* **92**, 790–797 (2014).
- Park, E. K. *et al.* Global magnitude of reported and unreported mesothelioma. *Environ. Health Perspect.* **119**, 514–518 (2011).
- Carbone, M. *et al.* Mesothelioma: Scientific clues for prevention, diagnosis, and therapy. *CA Cancer J. Clin.* **69**, 402–429 (2019).
- Bianchi, C. & Bianchi, T. Global mesothelioma epidemic: Trend and features. *Indian J. Occup. Environ. Med.* **18**, 82–88 (2014).
- Abdel-Rahman, O. Global trends in mortality from malignant mesothelioma: Analysis of WHO mortality database (1994–2013). *Clin. Respir. J.* **12**, 2090–2100 (2018).
- Carbone, M. *et al.* Malignant mesothelioma: Facts, myths, and hypotheses. *J. Cell. Physiol.* **227**, 44–58 (2012).
- Reid, A. *et al.* Mesothelioma risk after 40 years since first exposure to asbestos: A pooled analysis. *Thorax* **69**, 843–850 (2014).

13. Mace, M. L., McLemore, T. L., Roggli, V., Brinkley, B. R. & Greenberg, S. D. Scanning electron microscopic examination of human asbestos bodies. *Cancer Lett.* **9**, 95–104 (1980).
14. McLemore, T. L. *et al.* Asbestos body phagocytosis by human free alveolar macrophages. *Cancer Lett.* **9**, 85–93 (1980).
15. Governa, M. *et al.* Role of iron in asbestos-body-induced oxidant radical generation. *J. Toxicol. Environ. Heal. A* **58**, 279–287 (1999).
16. Ghio, A. J., Stonehuerner, J., Richards, J. & Devlin, R. B. Iron homeostasis in the lung following asbestos exposure. *Antioxid. Redox Signal.* **10**, 371–377 (2008).
17. Lund, L. G., Williams, M. G., Dodson, R. F. & Aust, A. E. Iron associated with asbestos bodies is responsible for the formation of single strand breaks in phi X174 RFI DNA. *Occup. Environ. Med.* **51**, 200–204 (1994).
18. Hardy, J. A. & Aust, A. E. The effect of iron binding on the ability of crocidolite asbestos to catalyze DNA single-strand breaks. *Carcinogenesis* **16**, 319–325 (1995).
19. Fubini, B. & Mollo, L. Role of iron in the reactivity of mineral fibers. *Toxicol. Lett.* **82–83**, 951–960 (1995).
20. Churg, A. M. & Warnock, M. L. Asbestos and other ferruginous bodies: Their formation and clinical significance. *Am. J. Pathol.* **102**, 447–456 (1981).
21. De Vuyst, P. *et al.* Guidelines for mineral fibre analyses in biological samples: Report of the ERS Working Group. European Respiratory Society. *Eur. Respir. J.* **11**, 1416–1426 (1998).
22. Stanton, M. F. *et al.* Relation of particle dimension to carcinogenicity in amphibole asbestos and other fibrous minerals. *J. Natl. Cancer Inst.* **67**, 956–975 (1981).
23. Feder, I. S. *et al.* The asbestos fibre burden in human lungs: new insights into the chrysotile debate. *Eur. Respir. J.* **49**, 1602534 (2017).
24. Visonà, S. D. *et al.* Inorganic fiber lung burden in subjects with occupational and/or anthropogenic environmental asbestos exposure in bronchi (Pavia, northern Italy): An sem-eds study on autopsic samples. *Int. J. Environ. Res. Public Health* **18**, 1–16 (2021).
25. Churg, A. Deposition and clearance of chrysotile asbestos. *Ann. Occup. Hyg.* **38**, 625–633 (1994).
26. Dumortier, P., De Vuyst, P., Strauss, P. & Yernault, J. C. Asbestos bodies in bronchoalveolar lavage fluids of brake lining and asbestos cement workers. *Br. J. Ind. Med.* **47**, 91–98 (1990).
27. Cruz, M. J. *et al.* Utility of bronchoalveolar lavage for the diagnosis of asbestos-related diseases. *Arch. Bronconeumol.* **53**, 318–323 (2017).
28. Karjalainen, A., Nurminen, M., Vanhala, E., Vainio, H. & Anttila, S. Pulmonary asbestos bodies and asbestos fibers as indicators of exposure. *Scand. J. Work. Environ. Health* **22**, 34–38 (1996).
29. Nuyts, V., Vanhooren, H., Begyn, S., Nackaerts, K. & Nemery, B. Asbestos bodies in bronchoalveolar lavage in the 21st century: A time-trend analysis in a clinical population. *Occup. Environ. Med.* **74**, 59–65 (2017).
30. Velasco-García, M. I. *et al.* Reproducibility of asbestos body counts in digestions of autopsy and surgical lung tissue. *Am. J. Ind. Med.* **54**, 597–602 (2011).
31. Teschler, H., Thompson, A. B., Dollenkamp, R., Konietzko, N. & Costabel, U. Relevance of asbestos bodies in sputum. *Eur. Respir. J.* **9**, 680–686 (1996).
32. Bardelli, F. *et al.* New insights on the biomineralisation process developing in human lungs around inhaled asbestos fibres. *Sci. Rep.* **7**, 1–11 (2017).
33. Borelli, V. *et al.* A procedure for the isolation of asbestos bodies from lung tissue by exploiting their magnetic properties: A new approach to asbestos body study. *J. Toxicol. Environ. Health A* **70**, 1232–1240 (2007).
34. Belluso, E. *et al.* Assessment of inorganic fibre burden in biological samples by scanning electron microscopy—Energy dispersive spectroscopy. *Microchim. Acta* **155**, 95–100 (2006).
35. Di Giuseppe, D. *et al.* Mineral fibres and asbestos bodies in human lung tissue: A case study. *Minerals* **9**, 1–21 (2019).
36. Craighead, J. E. *et al.* The pathology of asbestos-associated diseases of the lungs and pleural cavities: Diagnostic criteria and proposed grading schema. Report of the Pneumoconiosis Committee of the College of American Pathologists and the National Institute for Occupational Safety and Health. *Arch. Pathol. Lab. Med.* **106**, 544–596 (1982).
37. Khimchenko, A. *et al.* Hard X-ray nanoholotomography: Large-scale, label-free, 3D neuroimaging beyond optical limit. *Adv. Sci.* **5**, 1–9 (2018).
38. Pooley, F. D. & Ranson, D. L. Comparison of the results of asbestos fibre dust counts in lung tissue obtained by analytical electron microscopy and light microscopy. *J. Clin. Pathol.* **39**, 313–317 (1986).
39. Davis, J. M. The ultrastructure of asbestos bodies from human lung. *Br. J. Exp. Pathol.* **45**, 642–646 (1964).
40. Roggli, V. L. & Pratt, P. C. Numbers of asbestos bodies on iron-stained tissue sections in relation to asbestos body counts in lung tissue digests. *Hum. Pathol.* **14**, 355–361 (1983).
41. Newman, M. E. J. Power laws, Pareto distributions and Zipf's law. *Contemp. Phys.* **46**, 323–351 (2005).
42. Cluff, D. L. & Patitsas, A. J. Size characterization of asbestos fibers by means of electrostatic alignment and light-scattering techniques. *Aerosol Sci. Technol.* **17**, 186–198 (1992).
43. Gibbs, A. R. & Pooley, F. D. Analysis and interpretation of inorganic mineral particles in 'lung' tissues. *Thorax* **51**, 327–334 (1996).
44. Hill, R. Elastic properties of reinforced solids: Some theoretical principles. *J. Mech. Phys. Solids* **11**, 357–372 (1963).
45. Buzug, T. *Computed Tomography: From Photon Statistics to Modern Cone-Beam CT* (Springer, 2008).
46. Jawhar, N. M. T. Tissue microarray: A rapidly evolving diagnostic and research tool. *Ann. Saudi Med.* **29**, 123–127 (2009).
47. Giacobbe, C. *et al.* Crystal structure determination of a lifelong biopersistent asbestos fibre using single-crystal synchrotron X-ray micro-diffraction. *IUCr* **8**, 76–86 (2021).
48. Karjalainen, A. *et al.* Asbestos bodies in bronchoalveolar lavage in relation to asbestos bodies and asbestos fibres in lung parenchyma. *Eur. Respir. J.* **9**, 1000–1005 (1996).
49. Paganin, D., Mayo, S. C., Gureyev, T. E., Miller, P. R. & Wilkins, S. W. Simultaneous phase and amplitude extraction from a single defocused image of a homogeneous object. *J. Microsc.* **206**, 33–40 (2002).
50. Brun, F. *et al.* SYRMEP Tomo project: A graphical user interface for customizing CT reconstruction workflows. *Adv. Struct. Chem. Imaging* **3**, 4 (2017).

Acknowledgements

We are grateful to the I13-2 beamline staff at the Diamond Light Source (UK), and in particular to Dr. Silvia Cipiccia and Prof. Christoph Rau, for assistance and useful discussion during and after x-ray phase-contrast micro-tomography measurements. We also thank Dr. Francesca Tria for mathematical insights on the distribution of the AB length values, and the Diamond Light Source (UK) for granting beamtime through experiment MT16144-1. This research was funded by the Marie Skłodowska-Curie Individual Fellowship action *BiomimAB-3D*, under Grant Agreement 707905, and by the project *CALIPSOplus*, under Grant Agreement 730872 from the EU Framework Programme for Research and Innovation HORIZON 2020.

Author contributions

F.Ba.: conception and design of the study; first draft of the manuscript; funding acquisition; project administration. F.Ba. and F.Br.: X-ray experiment; data analysis. S.C., D.B. and C.C.: samples acquisition and preparation, light and electron microscopy analysis. A.C. and E.B.: resources. All authors contributed to manuscript revision, read, and approved the submitted version.

Competing interests

The authors declare no competing interests.

Additional information

Supplementary Information The online version contains supplementary material available at <https://doi.org/10.1038/s41598-021-90057-1>.

Correspondence and requests for materials should be addressed to F.B.

Reprints and permissions information is available at www.nature.com/reprints.

Publisher's note Springer Nature remains neutral with regard to jurisdictional claims in published maps and institutional affiliations.



Open Access This article is licensed under a Creative Commons Attribution 4.0 International License, which permits use, sharing, adaptation, distribution and reproduction in any medium or format, as long as you give appropriate credit to the original author(s) and the source, provide a link to the Creative Commons licence, and indicate if changes were made. The images or other third party material in this article are included in the article's Creative Commons licence, unless indicated otherwise in a credit line to the material. If material is not included in the article's Creative Commons licence and your intended use is not permitted by statutory regulation or exceeds the permitted use, you will need to obtain permission directly from the copyright holder. To view a copy of this licence, visit <http://creativecommons.org/licenses/by/4.0/>.

© The Author(s) 2021

Terms and Conditions

Springer Nature journal content, brought to you courtesy of Springer Nature Customer Service Center GmbH (“Springer Nature”).

Springer Nature supports a reasonable amount of sharing of research papers by authors, subscribers and authorised users (“Users”), for small-scale personal, non-commercial use provided that all copyright, trade and service marks and other proprietary notices are maintained. By accessing, sharing, receiving or otherwise using the Springer Nature journal content you agree to these terms of use (“Terms”). For these purposes, Springer Nature considers academic use (by researchers and students) to be non-commercial.

These Terms are supplementary and will apply in addition to any applicable website terms and conditions, a relevant site licence or a personal subscription. These Terms will prevail over any conflict or ambiguity with regards to the relevant terms, a site licence or a personal subscription (to the extent of the conflict or ambiguity only). For Creative Commons-licensed articles, the terms of the Creative Commons license used will apply.

We collect and use personal data to provide access to the Springer Nature journal content. We may also use these personal data internally within ResearchGate and Springer Nature and as agreed share it, in an anonymised way, for purposes of tracking, analysis and reporting. We will not otherwise disclose your personal data outside the ResearchGate or the Springer Nature group of companies unless we have your permission as detailed in the Privacy Policy.

While Users may use the Springer Nature journal content for small scale, personal non-commercial use, it is important to note that Users may not:

1. use such content for the purpose of providing other users with access on a regular or large scale basis or as a means to circumvent access control;
2. use such content where to do so would be considered a criminal or statutory offence in any jurisdiction, or gives rise to civil liability, or is otherwise unlawful;
3. falsely or misleadingly imply or suggest endorsement, approval, sponsorship, or association unless explicitly agreed to by Springer Nature in writing;
4. use bots or other automated methods to access the content or redirect messages
5. override any security feature or exclusionary protocol; or
6. share the content in order to create substitute for Springer Nature products or services or a systematic database of Springer Nature journal content.

In line with the restriction against commercial use, Springer Nature does not permit the creation of a product or service that creates revenue, royalties, rent or income from our content or its inclusion as part of a paid for service or for other commercial gain. Springer Nature journal content cannot be used for inter-library loans and librarians may not upload Springer Nature journal content on a large scale into their, or any other, institutional repository.

These terms of use are reviewed regularly and may be amended at any time. Springer Nature is not obligated to publish any information or content on this website and may remove it or features or functionality at our sole discretion, at any time with or without notice. Springer Nature may revoke this licence to you at any time and remove access to any copies of the Springer Nature journal content which have been saved.

To the fullest extent permitted by law, Springer Nature makes no warranties, representations or guarantees to Users, either express or implied with respect to the Springer nature journal content and all parties disclaim and waive any implied warranties or warranties imposed by law, including merchantability or fitness for any particular purpose.

Please note that these rights do not automatically extend to content, data or other material published by Springer Nature that may be licensed from third parties.

If you would like to use or distribute our Springer Nature journal content to a wider audience or on a regular basis or in any other manner not expressly permitted by these Terms, please contact Springer Nature at

onlineservice@springernature.com