

AperTO - Archivio Istituzionale Open Access dell'Università di Torino

One-Health evaluation on West Nile virus integrated Surveillance in Northern Italy, 2016

This is the author's manuscript

Original Citation:

Availability:

This version is available <http://hdl.handle.net/2318/1841800> since 2022-02-18T11:09:26Z

Terms of use:

Open Access

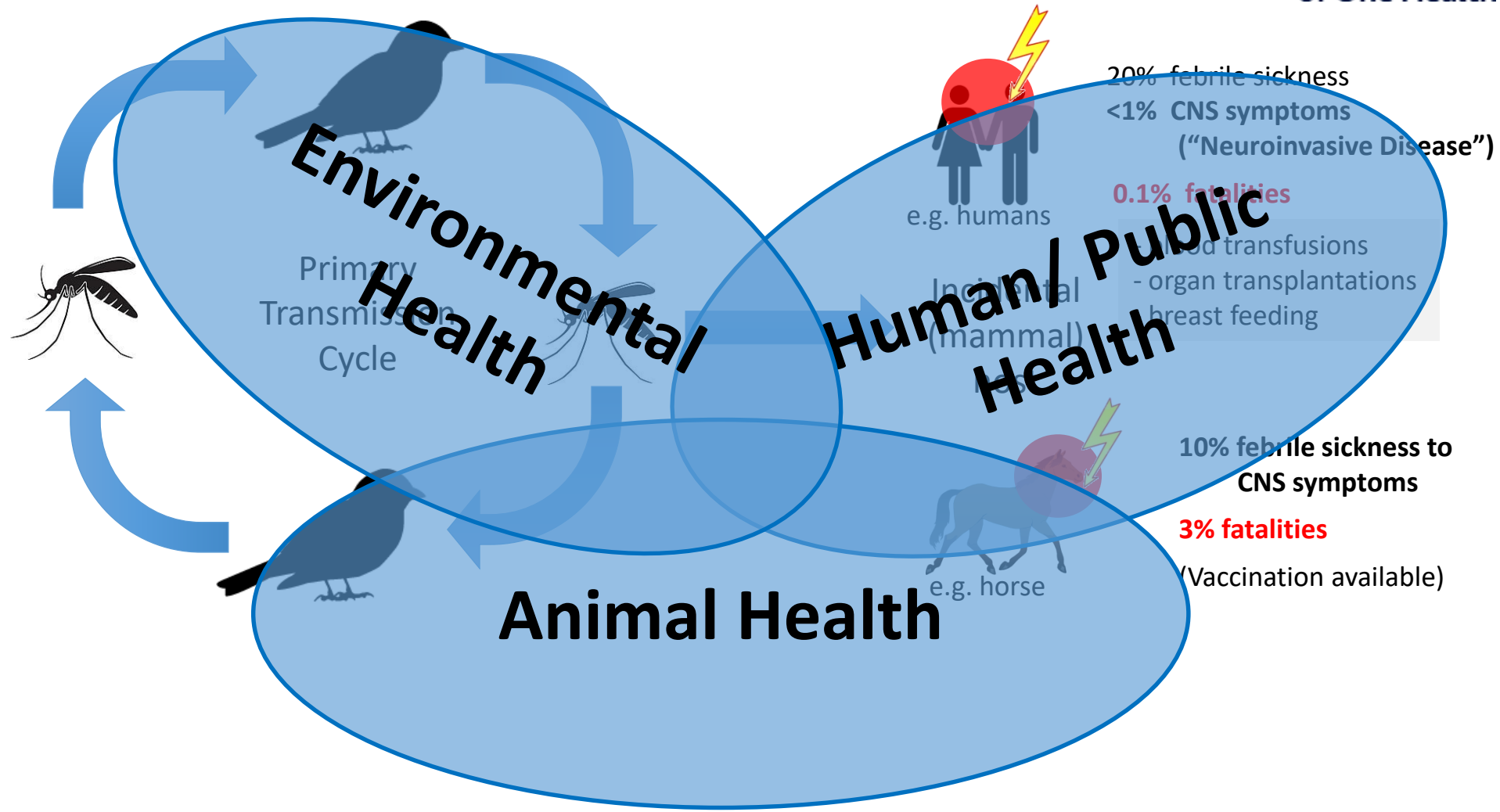
Anyone can freely access the full text of works made available as "Open Access". Works made available under a Creative Commons license can be used according to the terms and conditions of said license. Use of all other works requires consent of the right holder (author or publisher) if not exempted from copyright protection by the applicable law.

(Article begins on next page)

OH evaluation on West Nile virus integrated Surveillance in Northern Italy, 2016

G Paternoster, L Tomassone , M Tamba, M Chiari, A Lavazza, M Piazzzi,
AR Favretto, G Balduzzi, B Vogler

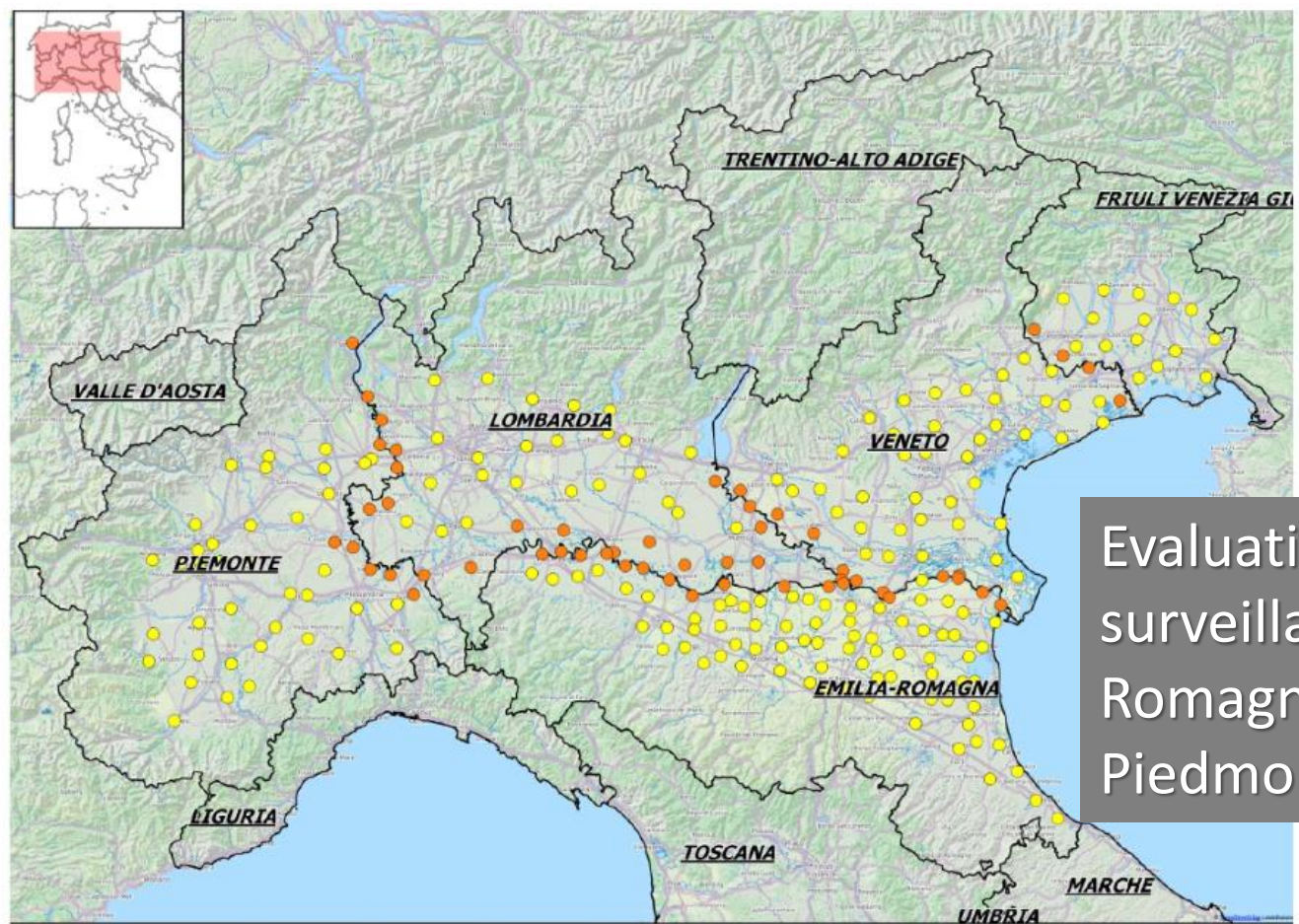
WNV



holistic approach to understand and manipulate the transmission system

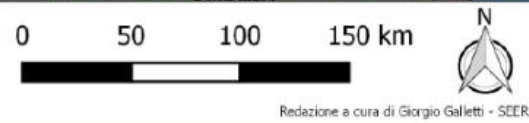
Italy: **national plan** for the surveillance of human vector-borne diseases

Regional integrated surveillance plans: detecting **WNV** circulation and reducing the risk of infection in horse and human populations



Evaluation of regional surveillance in Emilia-Romagna, Lombardy, and Piedmont regions, 2016

- Legenda
- Siti monitoraggio entomologico
 - Siti monitoraggio entomologico valenza sovraregionale



Entomological traps in Po river valley (source: Emilia-Romagna WNV surveillance plan 2016)

Evaluation questions

1. OH-ness evaluation

Use of NEOH handbook to score

OH - thinking

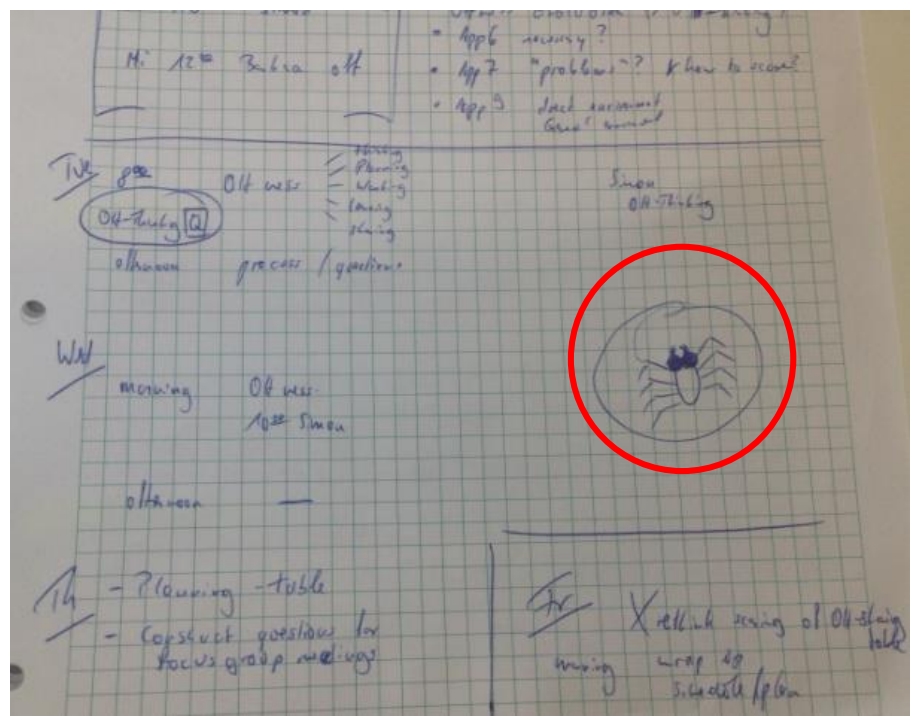
OH - planning

OH - sharing

OH - working

OH - learning

Detect the strength
of OH approach





2. process evaluation

Focus group

- One for each region
- Maximun 8 participants
- ‘privileged observers’ – participating in the surveillance system
- 90’

*Annu. Rev. Sociol. 1996. 22:129-52
Copyright © 1996 by Annual Reviews Inc. All rights reserved*

FOCUS GROUPS

David L. Morgan

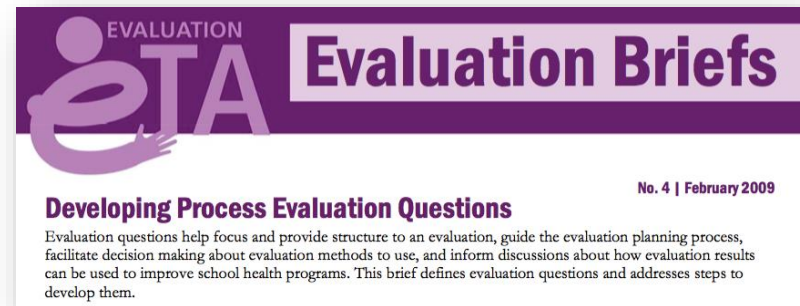
Institute on Aging, School of Urban and Public Affairs, Portland State University, Portland, Oregon 97201

KEY WORDS: qualitative research methods, methodology, focus groups, group interviews

Detect strengths and weaknesses of how the initiative is implemented

Specific Questions

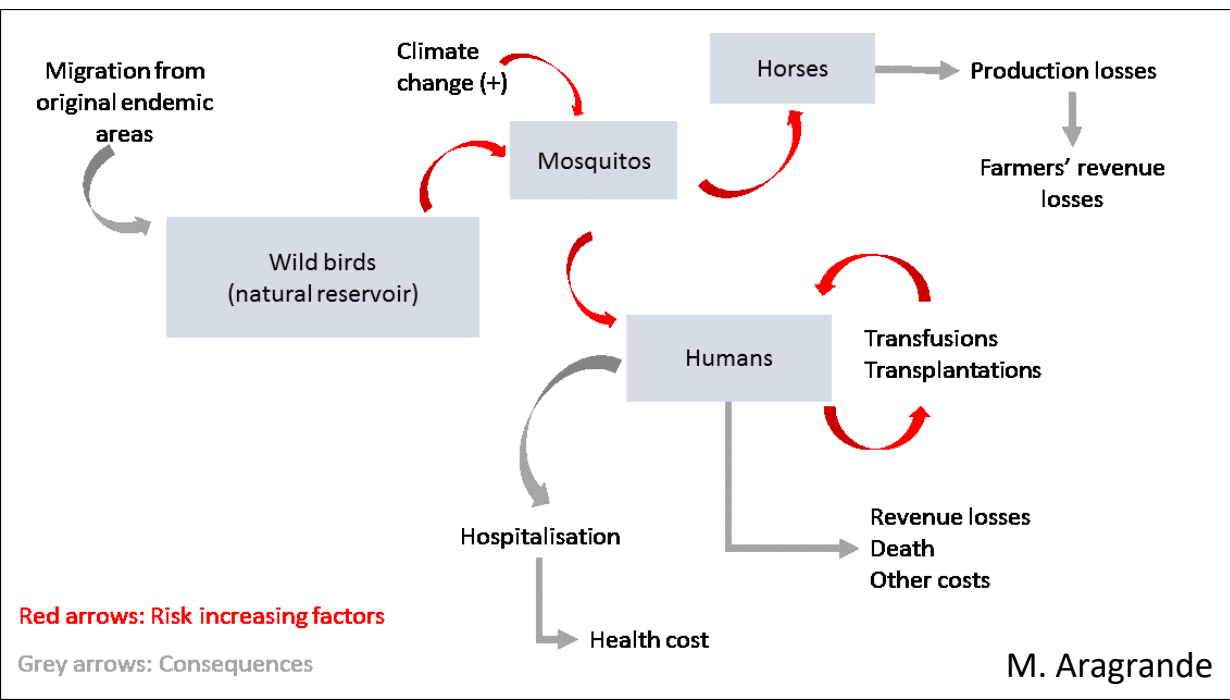
1. Fidelity
2. Reach
3. Dose delivered



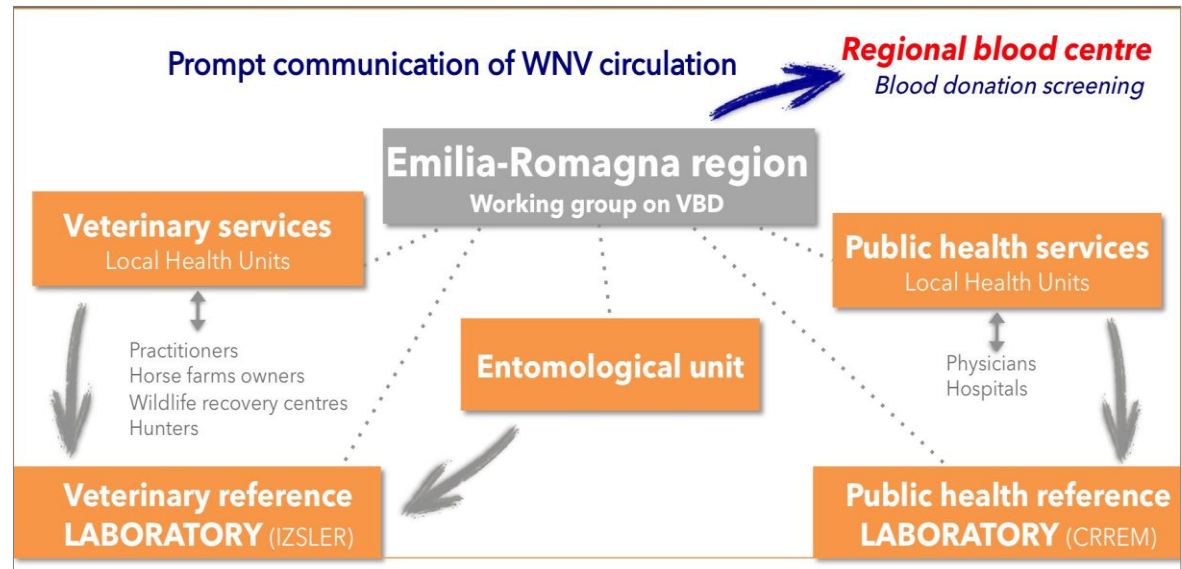
RESULTS OF EVALUATION (1)



Identification of the system



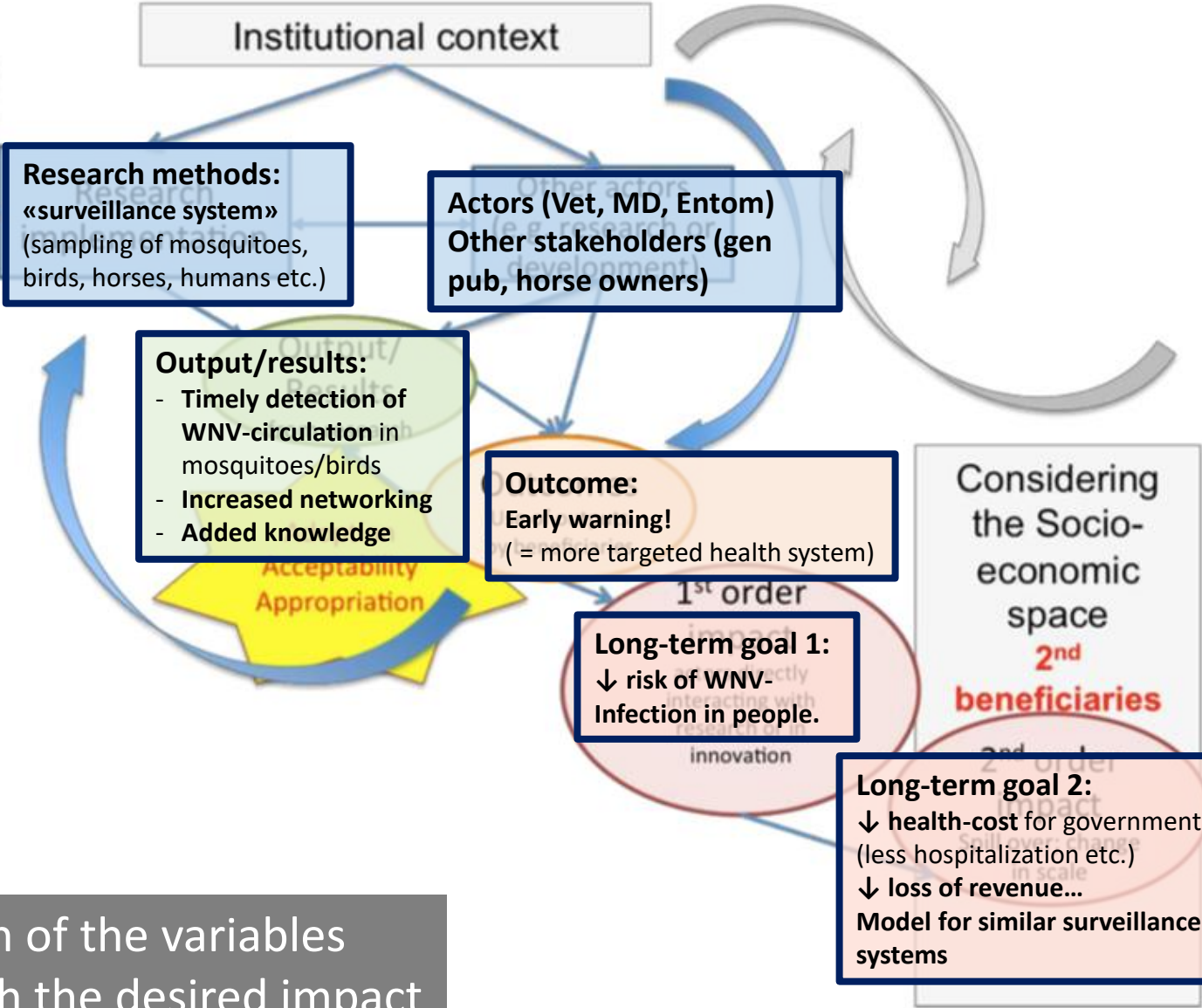
Institutional system



Theory of Change

Input:

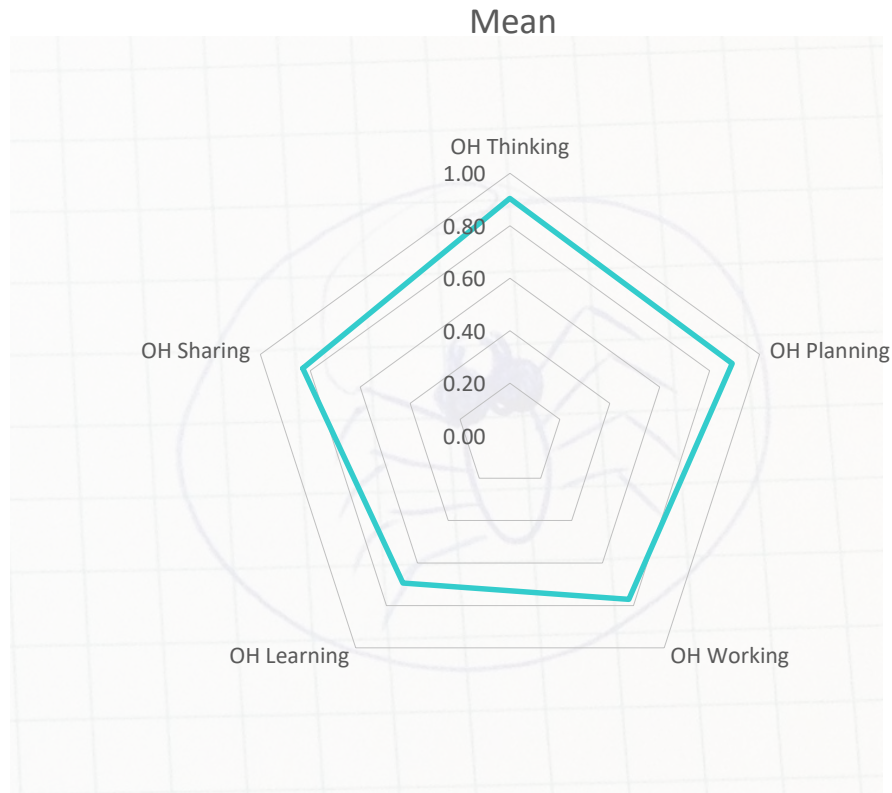
- **Previous knowledge**
- **Funding**
- **Actors:** veterinarians, medical doctors, entomologists (funding, availability, education, training)
- **General stakeholders:** general public, horse owners (informed and cooperating)
- Platform for **communication** and interaction between stakeholders



Identification of the variables required to reach the desired impact

OH-ness evaluation

Spider diagram



Scores

OH Thinking:	0.90
OH Planning:	0.89
OH Working:	0.77
OH Learning:	0.69
OH Sharing:	0.83

Good scores, highlighting critical issues related to communication and learning gaps

Process evaluation

first insights and outlook

- 12/12/16 FG in Piedmont
- 22/12/16 FG in Emilia-Romagna
- 12/01/17 FG in Lombardy



Preliminary results

- Some differences among Regions
- Critical points
 - Communication
 - Funding

Implementation of the evaluation process: problems encountered, limitations

OH-ness evaluation



In general

- Assessment tools were in the validation phase
- Vocabulary not always clear
- Room for subjective interpretation of questions
- We had to remember to evaluate the overall system, not the success/output of the system

In particular

- OH thinking: quite hard to compile
- OH learning: has to be answered by actors involved in the initiative, very difficult as external evaluators

Process evaluation

The help of sociologists is essential

Conclusions

- Evaluation process iterative and time-consuming, but very rewarding by providing deeper insights
- OH-ness evaluation enabled to detect critical points
- Deeper insights expected from the qualitative process evaluation

→ basis for the development of shared recommendations to fine-tune and implement the initiative in a more OH oriented perspective