

AperTO - Archivio Istituzionale Open Access dell'Università di Torino

Procalcitonin as a marker of Candida species detection by blood culture and polymerase chain reaction in septic patients

This is the author's manuscript

Original Citation:

Availability:

This version is available <http://hdl.handle.net/2318/1850306> since 2022-03-21T09:18:32Z

Published version:

DOI:10.1186/1471-2253-14-9

Terms of use:

Open Access

Anyone can freely access the full text of works made available as "Open Access". Works made available under a Creative Commons license can be used according to the terms and conditions of said license. Use of all other works requires consent of the right holder (author or publisher) if not exempted from copyright protection by the applicable law.

(Article begins on next page)

RESEARCH ARTICLE

Open Access

Procalcitonin as a marker of *Candida* species detection by blood culture and polymerase chain reaction in septic patients

Andrea Cortegiani^{*}, Vincenzo Russotto, Francesca Montalto, Grazia Foresta, Giuseppe Accurso, Cesira Palmeri, Santi Maurizio Raineri and Antonino Giarratano

Abstract

Background: The aim of our study is to test procalcitonin (PCT) as surrogate marker of identification of *Candida* spp. by blood culture (BC) and real-time-polymerase chain reaction (PCR), whether alone or in association with bacteria, in septic patients.

Methods: We performed a single-centre retrospective study. We reviewed the clinical charts of patients with a diagnosis of severe sepsis or septic shock treated at our general intensive care unit from March 2009 to March 2013. We analysed all diagnostic episodes consisting of BC, real-time PCR assay and dosage of PCT. We registered age, sex, white blood count, sequential organ failure assessment score and type of admission between medical or surgical. When inclusion criteria were met more than once, we registered the new diagnostic episode as subsequent diagnostic episode. The diagnostic performance of PCT to predict *Candida* spp. identification alone or in mixed infections by either BC or PCR was tested using the receiver-operative characteristic curve. Logistic regression was constructed using presence of *Candida* spp. as the dependent variable.

Results: A total of 260 diagnostic episodes met the inclusion criteria. According to BC results classification, a significantly lower value of PCT was observed in *Candida* spp. BSI (0.99 ng/ml, 0.86 - 1.34) than in BSI caused by bacteria (16.7 ng/ml, 7.65 - 50.2) or in mixed infections (4.76 ng/ml, 2.98 - 6.08). Similar findings were observed considering PCR results. A cut-off of ≤ 6.08 ng/ml for PCT yielded a sensitivity of 86.8%, a specificity of 87.4%, a positive predictive value of 63.9%, a negative predictive value (NPV) of 96.3% and an area under the curve of 0.93 for *Candida* spp. identification by BC. A similar high NPV for a cut-off ≤ 6.78 ng/ml was observed considering the classification of diagnostic episodes according to PCR results, with an AUC of 0.85. A subsequent diagnostic episode was independently associated with *Candida* spp. detection either by BC or PCR.

Conclusion: PCT could represent a useful diagnostic tool to exclude the detection of *Candida* spp. by BC and PCR in septic patients.

Keywords: Procalcitonin, Sepsis, *Candida* species, Blood stream infection, Fungal infection, Polymerase chain reaction, Antifungal therapy

* Correspondence: andrecortegiani@alice.it
Department of Biopathology, Medical and Forensic Biotechnologies (DIBIMEF), Section of Anaesthesia, Analgesia, Intensive Care and Emergency. Policlinico "P. Giaccone", University of Palermo, Palermo, Italy

Background

Candida species (spp.) are currently among the leading microorganisms causing bloodstream infection (BSI) in critically ill patients worldwide. They are responsible for high crude mortality and healthcare costs [1-3]. A delay in starting adequate antifungal treatment is an independent predictor of high in-hospital mortality [4-6]. Nonetheless, BC requires several days for *Candida* spp. detection and it is still the gold standard for microbiological diagnosis [7-9]. β -1,3-D-glucan and mannan antigen in association with anti-mannan antibodies have been recently recommended as surrogate markers of *Candida* spp. infection [7,10]. However, their use has several limitations [7,11-15]. Polymerase chain reaction (PCR) is an alternative method to promptly identify DNA of microorganisms but its diagnostic performance in fungal infections is still questioned [7,16,17]. Procalcitonin (PCT) is widely used as marker of bacterial infection [18-20] and as guide to reduce patients' exposure to antibiotics [21]. Few data support its usefulness as a surrogate marker for *Candida* spp. infection [22-24]. However, its value in patients with a mixed infection sustained by both bacteria and *Candida* spp., have not been investigated. Furthermore, no studies have described the correlation between PCT value and identification of *Candida* spp. DNA by PCR. The aim of our study is to test PCT as surrogate marker of *Candida* spp. detection by BC or PCR whether alone or in association with bacteria in septic patients.

Methods

We obtained the approval from our institutional review board (Comitato Bioetico AOUP "P. Giaccone", Palermo, Italy) for this single - centre retrospective study. Informed consent was waived due to the retrospective and anonymous nature of data collection and analysis. We reviewed the clinical records of all patients with a diagnosis of severe sepsis or septic shock [25] from March 2009 to March 2013 at the general Intensive Care Unit of the University Hospital "P. Giaccone", Palermo, Italy. We analysed the diagnostic episodes performed after the diagnosis of severe sepsis or septic shock and registered those in agreement with our diagnostic protocol consisting of a blood culture, a PCR assay for microorganism detection (bacteria and/or *Candida* spp.) and a dosage of PCT. We excluded the diagnostic episodes done on patients with known immunodeficiency not related to sepsis, those with missing tests and those not completed within a 8-hour time interval. For each complete diagnostic episode, we registered age, sex, white blood count (WBC), Sequential Organ Failure Assessment (SOFA) score [26] and type of admission of the corresponding patient. The admission was considered as surgical if patient underwent surgery within 30 days preceding the ICU admission, otherwise it was considered as medical.

According to the results of each microbiological test, the diagnostic episodes were then classified in four groups: bacterial infection, mixed infection (bacterial infection and *Candida* spp. infection), *Candida* infection and negative. We also subdivided the bacterial and mixed BSI according to Gram staining. When inclusion criteria were met more than once for a single patient during the ICU admission (i.e. new BSI documented by BC and PCR completed by a PCT determination), we considered this event a new diagnostic episode for data analysis. Nevertheless, we registered the event as subsequent diagnostic episode. In our ICU, a set of three blood specimens is drawn from each patient for BC, according to the recently published guidelines of the European Society of Clinical Microbiology and Infectious Diseases (ESCMID) [7]. We considered only blood specimens collected through venipuncture. A blood specimen of 5 ml is collected in a EDTA test tube for PCR analysis. We excluded the diagnostic episode from the analysis if a violation of the protocol for sterile procedures was encountered during clinical records review. In our institution, BACTEC® 9050 system (Becton Dickinson Diagnostic Instrument System, Paramus, NJ, USA) is used for the first step of blood culture process. A multiplex real time PCR (LightCycler Septifast®, MGRADE®, Roche Molecular Diagnostics, Prague, Czech Republic) is adopted as additional diagnostic tool for detection of the 25 most common pathogens causing BSI in our general ICU. This PCR assay is able to identify 5 *Candida* species (*albicans*, *parapsilosis*, *tropicalis*, *krusei*, *glabrata*). PCT is dosed by immunoassay through the Kriptor® PCT (Brahms, Hennigsdorf, Germany). Primary outcome of the study was to assess PCT median values in septic patients with a BSI caused by *Candida* spp. and/or bacteria detected by BC/PCR. Secondary outcome was the evaluation of the diagnostic performance of PCT with the identification of its sensitivity, specificity, positive predictive value (PPV) and negative predictive value (NPV) for detection of *Candida* spp.

Statistical analysis

Variables distribution was analyzed by D'Agostino-Pearson's test. For variables with normal distribution, we calculated and reported mean and standard deviation. Variables without a normal distribution were expressed as median and interquartile ranges (25th-75th) and comparisons were performed through Mann-Whitney U-test. One-way-analysis of variance ANOVA was used to test the difference between the means of different subgroups variables. Prior to ANOVA test, Levene's test for a quality of variances was performed. If the ANOVA test was positive, we performed a Student-Newman-Keuls test or pairwise comparison of subgroups. The Kruskal-Wallis test (H-test) was used to analyse the effect of a classification

factor on ordinal data when the distribution of the sample was not normal. For post-hoc analysis, if the Kruskal-Wallis test was positive, we performed a test for pairwise comparison of subgroups according to Conover [27]. A frequency table was constructed and the chi-square test was adopted for comparison of proportions. The diagnostic performance of PCT to predict the identification of Candida spp. by either BC or PCR was tested using the receiver-operating characteristic (ROC) curves. We calculated the area under the ROC curves (AUC) and the values with the highest Youden index (best PCT cut-offs). Logistic regression analysis was performed with presence of Candida spp. (Candidemia) as the dependent variable whether alone or in association with bacteria. The power of the calculated model was tested by Hosmer - Lemeshow goodness of fit test. A variable was entered into the model if its associated significance level was $p < 0.05$. On the contrary, variables were removed from the model if $p > 0.1$. Then, significant variables were sequentially entered into the model, checking and possibly removing variables as they became not significant (stepwise method). Regression coefficients (β coefficient) were calculated and reported. A value of $p < 0.05$ was considered statistically significant. Statistical analysis was performed using MedCalc for Windows, version 9.5.0.0 (MedCalc Software, Mariakerke, Belgium).

Results

A total of 321 severe sepsis/septic shock patients were admitted to our ICU during the study period, accounting

Table 1 Diagnostic episodes classification according to BC and PCR results

		Blood culture results				
		Bacteria	Mixed	Negative	Candida	Total
N°	Bacteria	151	31	56	22	260
	Candida					
		PCR results				
		Bacteria	Mixed	Negative	Candida	Total
N°	Bacteria	143	39	48	30	260
	Candida					

For differentiation of Bacteria according to Gram staining, see text.

for a total of 424 diagnostic episodes. Among them, 260 fulfilled the adopted inclusion criteria (Figure 1). BC detected 151 BSI caused by bacteria (18 caused by Gram +, 32 by Gram + and Gram -, 101 by Gram -), 22 by Candida spp., 31 mixed infection sustained by both bacteria and Candida spp. (5 Candida spp. and Gram +, 26 Candida spp. and Gram -) and 56 negative specimens. According to PCR results, 143 BSI were caused by bacteria spp., (25 caused by Gram +, 27 by Gram + and Gram -, 91 by Gram -), 30 by Candida spp., 39 by a mixed infection (8 Candida spp. and Gram +, 31 Candida spp. and Gram -) and 48 were negative (Table 1).

Demographic data and characteristics of all diagnostic episodes are showed in Tables 2 and 3 for BC and PCR results respectively. A higher proportion of surgical patients was detected in Candida spp. BSI than in those caused by bacteria ($p = 0.05$) or negative ($p = 0.03$) according to BC results. With regard to infections demonstrated

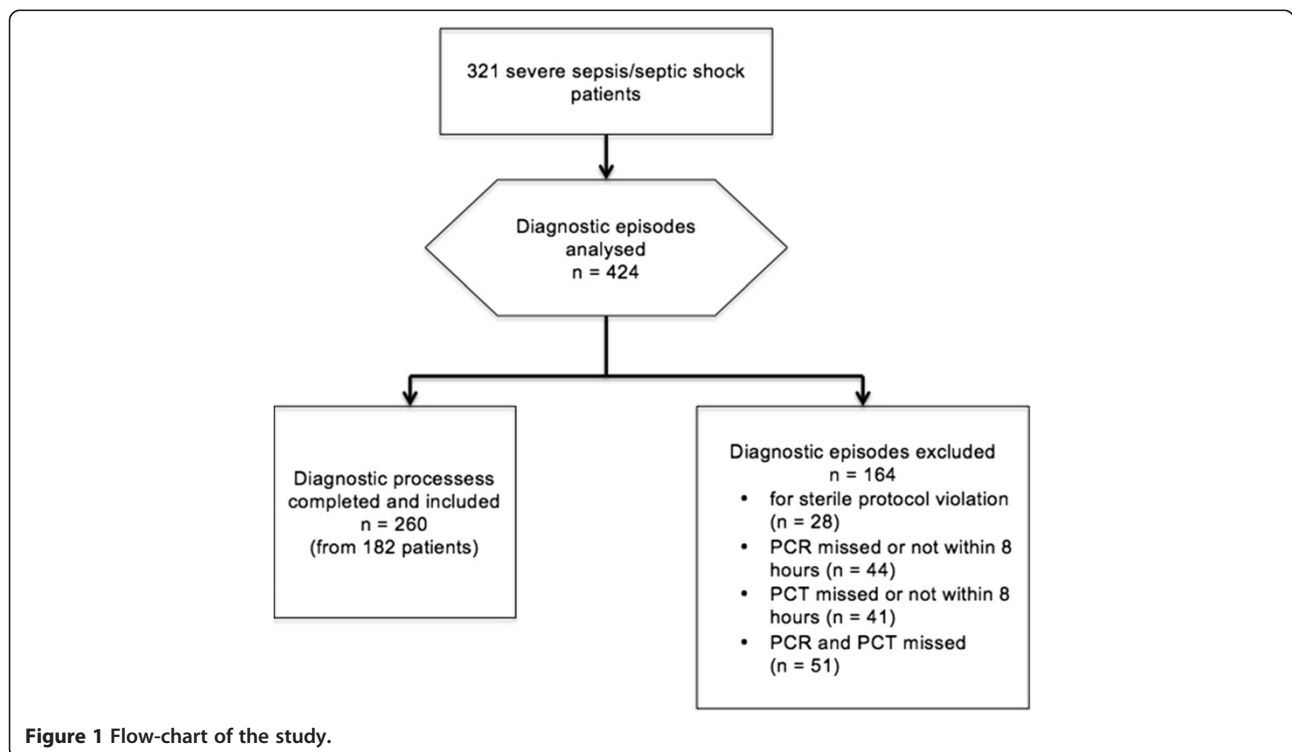


Figure 1 Flow-chart of the study.

Table 2 Demographic data for BC diagnostic episodes

	Bacteremia (1)	Mixed (2)	Negative (3)	Candida (4)	Overall	P value
Diagnostic episodes	151	31	56	22	260	
Age Mean (SD)	65.3 (13.9)	67.1 (14.1)	65.2 (13.4)	68.8 (11.7)	65.8 (13.6)	0.66
Sex (male) (%)	79 (52.3)	17 (54.9)	32 (57.1)	11 (50)	139 (53.5)	0.92
WBC (cells $\times 10^3/\mu\text{L}$) Median (I.Q)	16.1 (14.1-18.2)	17.2 (14.2-18.3)	16.1 (13.0-18.1)	16.9 (14.9 -18.5)	16.2 (13.9-18.2)	0.24
SOFA Mean (SD)	7.8 (1.4)	7.9 (2.1)	7.6 (1.1)	8.2 (1.6)	7.8 (1.5)	0.5
Surgical (%)	90 (59.6)	20 (64.5)	29 (51.8) 3 vs 4 p=0.03	19 (86.4) 1 vs 4 p=0.05	158 (60.8)	0.04
Septic Shock (%)	52 (34.4)	9 (29)	15 (26.8)	7 (31.8)	83 (31.9)	0.74
Subsequent Diagnostic Episode (%)	40 (26.5)	21 (66.7) 1 vs 2 p=0.0057	15 (26.8) 3 vs 4 p=0.0048	18 (81.8) 1 vs 4 p=0.0003	94 (36.2)	0.0001

ANOVA test for comparisons of means. Kruskal – Wellis test for comparisons of medians.
 SD standard deviation, I.Q. interquartile range.

by BC, a higher percentage of subsequent diagnostic episodes was encountered in Candida spp. BSI and mixed BSI ($p = 0.0001$). Similar results were found according to PCR classification. PCT values are showed in Table 4 for BC and in Table 5 for PCR results. Considering BC results, a significantly lower value of PCT was observed in Candida spp. BSI (0.99 ng/ml, 1.34 - 0.86) than in BSI caused by bacteria (16.7 ng/ml, 50.2 - 7.65) or in mixed infections (4.76 ng/ml, 6.08 – 2.98) (Figure 2). Similar findings were observed when diagnostic episodes were classified according to PCR results (Figure 3).

A cut-off of 6.08 ng/ml for PCT showed a sensitivity of 86.8%, a specificity of 87.4%, a PPV of 63.9%, a NNP of 96.3% and an AUC of 0.93 for identification of Candida spp. (alone or in association with bacteria) by BC (Figure 4). Similarly, according to PCR results, a cut-off of 6.78 ng/ml yielded a sensitivity of 73.9%, a specificity of 81.7%, a PPV of 59.3%, a NPV of 89.7 and an AUC of 0.85 (Figure 5).

The variables included in the logistic regression model were the value of PCT and the subsequent diagnostic episodes, which both resulted independently associated

with the presence of Candida spp. detected by either BC or PCR (Tables 6 and 7 respectively).

The different Candida spp. isolated by BC and PCR are shown in Tables 8 and 9.

PCT values did not differ between Candida albicans and non-albicans species isolated by BC ($p = 0.36$) and PCR ($p = 0.25$).

Discussion

A prompt start of effective antifungal therapy is essential for mortality reduction in Candida spp. BSI [4,5]. Even if BC is the cornerstone for diagnosis of Candida spp. BSI, concern has been raised about the long time required before microbiological response [28,29]. A pre-emptive approach aims to start treatment without delay in patients with clinical and microbiological evidence of candidemia without its definitive BC-based proof, while limiting the use of antifungal agents in low-risk patients [9,28,30,31]. Surrogate markers of candidemia were studied for this purpose. β -1,3-D – glucan is not specific for Candida spp. BSI as it is considered a panfungal diagnostic method [7,14]. Despite a high negative predictive value,

Table 3 Demographic data for PCR diagnostic episodes

	Bacteremia (1)	Mixed (2)	Negative (3)	Candida (4)	Overall	P value
Diagnostic episodes	143	39	48	30	260	
Age Mean (SD)	65.2 (13.8)	67.1 (14.3)	64.3 (13.1)	69.2 (11.3)	65.8 (13.5)	0.37
Sex (male) (%)	74 (51.7)	20 (51.3)	28 (58.3)	16 (53.3)	138 (53.1)	0.87
WBC (cells $\times 10^3/\mu\text{L}$) Median (I.Q)	16.1 (13.9 -18.2)	16.9 (14.4-18.2)	16.4 (13.0 -18.1)	16.7 (14.2 -18.4)	16.2 (13.9-18.2)	0.58
SOFA Mean (SD)	7.8 (1.4)	8.1 (2.0)	7.6 (1.1)	8.0 (1.4)	7.8 (1.5)	0.3
Surgical (%)	87 (60.8)	22 (56.4)	25 (52.1)	24 (80.0)	158 (60.8)	0.09
Septic Shock (%)	52 (36.4)	9 (23.1)	15 (31.2)	7 (23.3)	83 (31.9)	0.29
Subsequent Diagnostic Episode %	38 (26.6)	23 (58.9) 1 vs 2 p=0.02	14 (29.2)	19 (63.3) 1 vs 4 p=0.02	94 (36.2)	0.0001

ANOVA test for comparisons of means. Kruskal – Wellis test for comparisons of medians.
 SD standard deviation, I.Q. interquartile range.

Table 4 Procalcitonin values according to the classification of BC results

Group	PCT (ng/ml) Median (I.Q.)	Different (p < 0.05) from
Bacteremia	16.75 (7.65 - 50.5)	Mixed, Candidemia
Mixed	4.76 (2.98 - 6.08)	Bacteremia, Negative, Candidemia
Negative	12.36 (9.36 - 37.2)	Mixed, Candidemia
Candidemia	0.99 (0.86 - 1.34)	Bacteremia, Mixed, Negative

I.Q. interquartile range.

different patient characteristics (i.e. hematological diseases) and interventions (i.e. albumin or immunoglobulin administration, hemodialysis) are responsible for its reported low specificity [7,11,13,14,32]. The use of surgical gauzes containing glucan may increase β -1,3-D – glucan level leading to false positive results and to its poor reliability in ICU with a high admission rate of surgical patients [12,33,34]. The combined determination of mannan and anti-mannan antibodies in serum is a specific diagnostic marker of *Candida* spp. detection with a high negative predictive value [10,15,35,36]. Serial determinations are needed to optimise the diagnostic performance of both β -1,3-D – glucan and mannan/anti-mannan antibodies leading to the high related costs. Concerning PCR techniques as diagnostic tool for *Candida* spp. BSI, one of the most important limits precluding the widespread adoption is the potential contamination with clinically not significant fungal DNA [16]. Moreover, PCR-based molecular techniques require technical skills and equipment. Further studies are needed to assess their diagnostic performance and harmonization of results according to the adopted PCR-technique [7,16]. Few data support the usefulness of PCT as surrogate marker of *Candida* spp. BSI. [22-24,37] and no studies have investigated PCT values in patients with BSI caused by both *Candida* spp. and bacteria. Moreover, the diagnostic performance of PCT has been investigated in light of the BC results and not considering the results of a real-time PCR technique. In this study, we tested PCT as surrogate marker of identification of *Candida* spp. by BC or PCR whether alone or in association with bacteria in septic patients. We identified a cut-off for PCT level useful to rule out the presence of

Table 5 Procalcitonin values according to the classification of PCR results

Group	PCT (ng/ml) Median (I.Q.)	Different (p < 0.05) from
Bacteremia	16.54 (7.83 - 47.8)	Mixed, Candidemia
Mixed	6.08 (4.29 - 12.65)	Bacteremia, Negative, Candidemia
Negative	13.4 (9.36 - 41.5)	Mixed, Candidemia
Candidemia	1.27 (0.92 - 2.09)	Bacteremia, Mixed, Negative

I.Q. interquartile range.

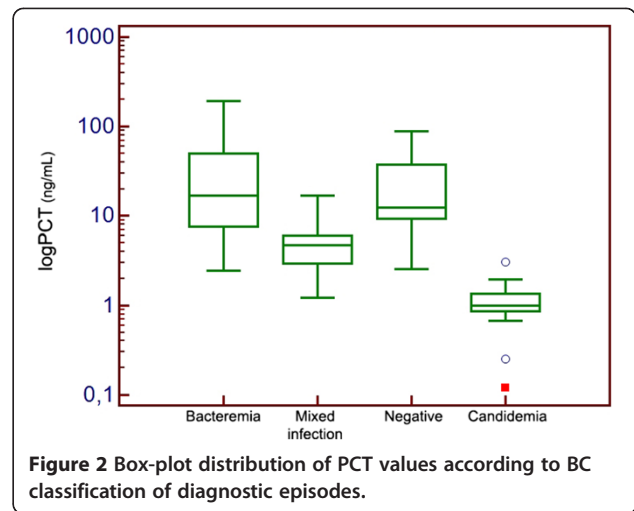


Figure 2 Box-plot distribution of PCT values according to BC classification of diagnostic episodes.

Candida spp. with a high negative predictive value. The finding of a significantly lower PCT level in *Candida* spp. BSI than in bacterial BSI is consistent with that previously reported [22-24]. According to our data, in BSI caused by both *Candida* spp. and bacteria, the PCT showed a higher level than in BSI caused only by *Candida* spp. but a lower level than in bacterial and negative BSI. Of note, *Candida* spp. infection was diagnosed as a second BSI in a relevant number of cases, confirming previously published data [23]. This finding may be explained in light of the novel recognition of sepsis as a complex immune response to pathogens with a hyperinflammatory phase as a hallmark of the early period followed by a phase of impaired immunity and an anti-inflammatory phase predominance. Due to this susceptibility, a secondary nosocomial infection such as *Candida* spp. infection, typically occurs [38-41]. It may be hypothesized that the observed low PCT level in relation to *Candida* spp.

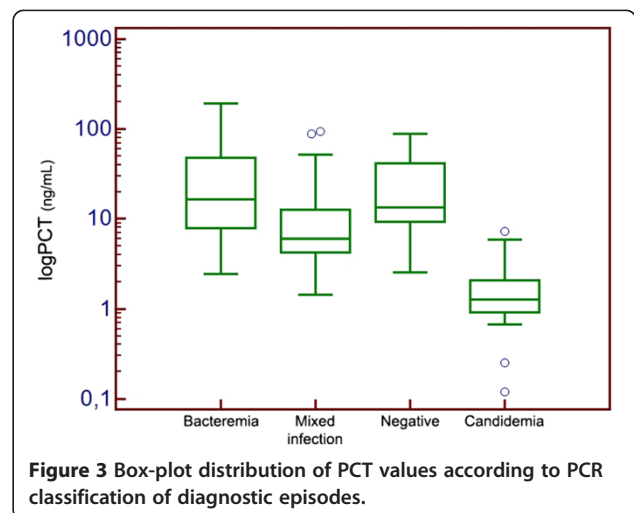


Figure 3 Box-plot distribution of PCT values according to PCR classification of diagnostic episodes.

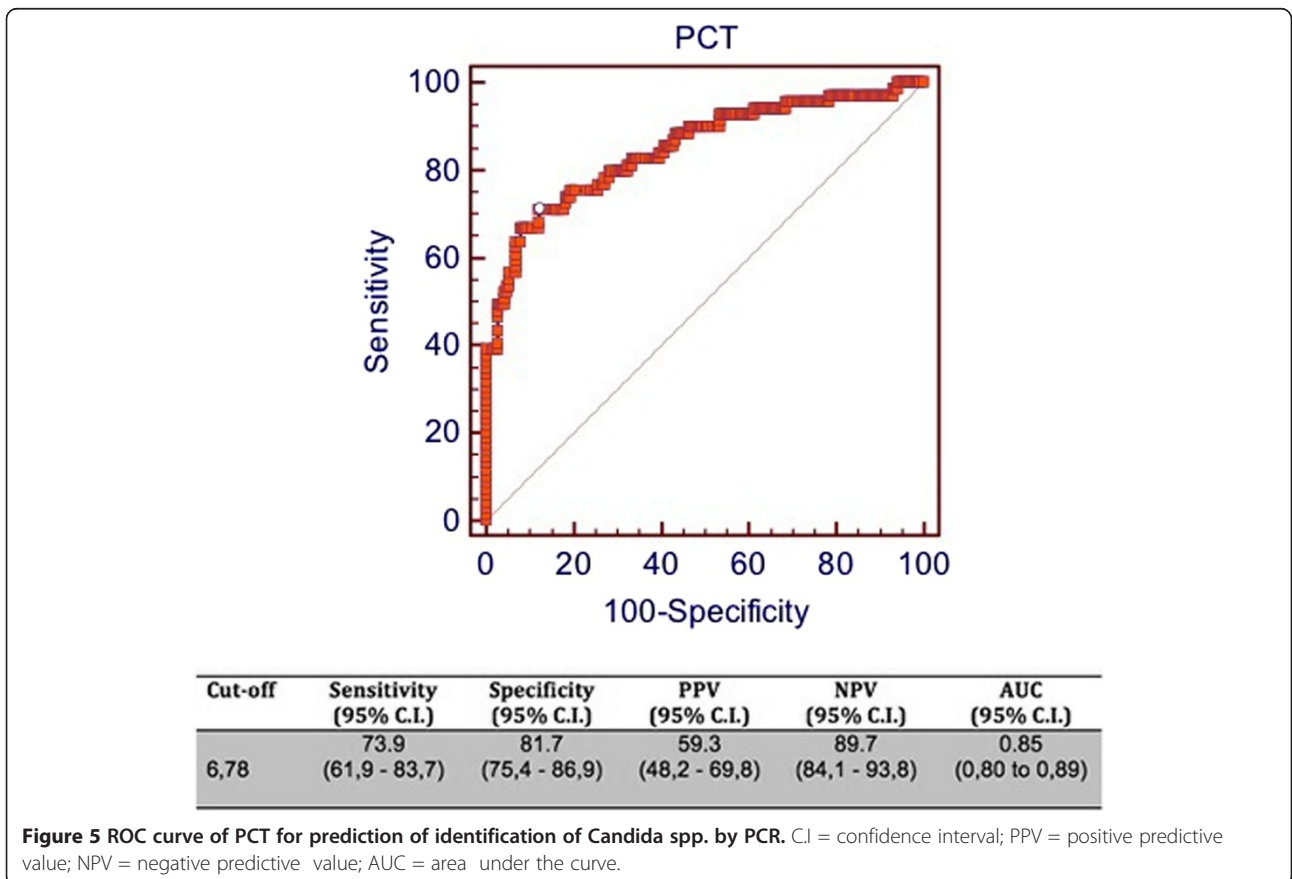
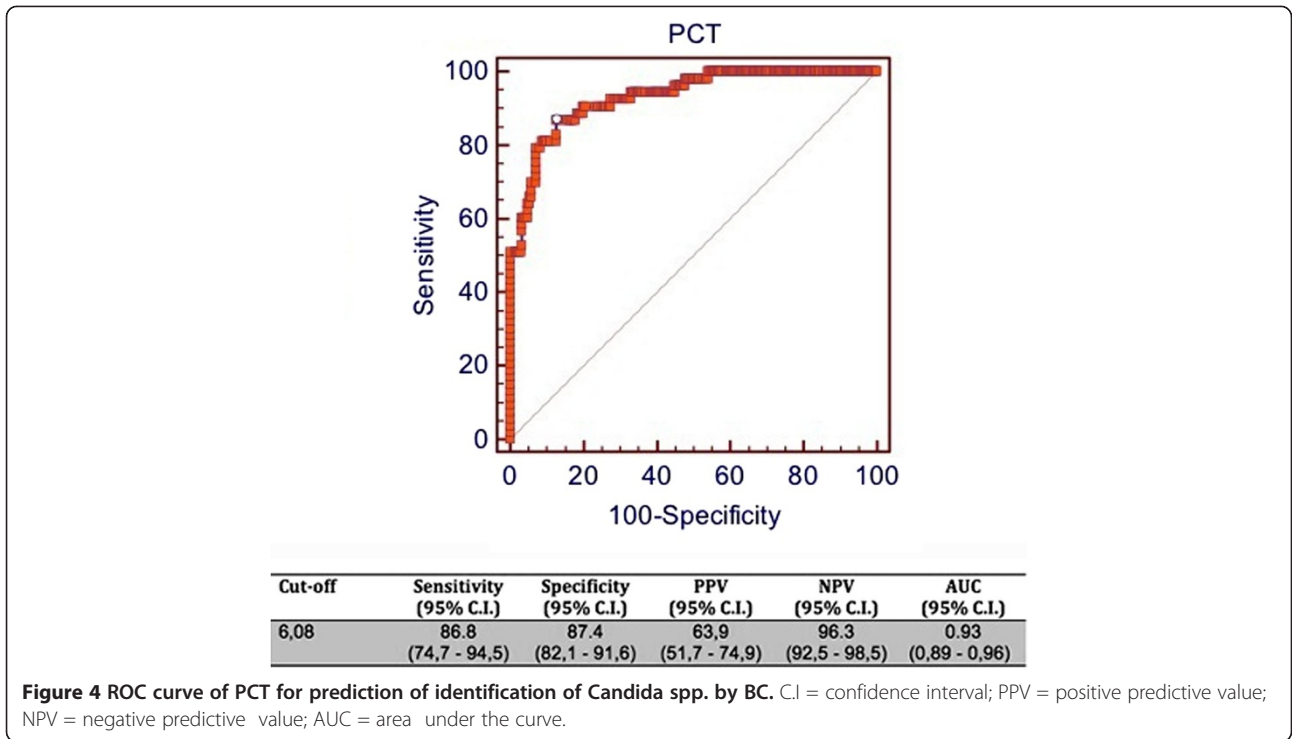


Table 6 Logistic regression Candidemia

Variable	Variable type	β coefficient	Standard error	P value
PCT	Continuous	-0.41	0.07	< 0.0001
Subsequent Diagnostic episode	Dichotomous	2.23	0.48	< 0.0001

Variables not included in the model: age, sex, SOFA score, Surgical, WBC, Septic Shock. (Hosmer & Lemeshow test: chi-square: 4.49, p = 0.81).

infection may reflect this impaired immunity phase of sepsis or rather may result from a different inflammatory pattern stimulated by fungal infection [23,42]. Indeed, a lower level of PCT was observed in patients with a subsequent BSI than in those experiencing the first BSI, regardless of the identification of *Candida* spp. as the responsible organism for the subsequent BSI [42]. Thus, identification of PCT level in the case of a mixed infection is important since intensivists encounter a growing number of critically ill patients in immunoparalysis prone to *Candida* spp. infection and a promptly anti-fungal therapy institution is pivotal for mortality reduction [4,38]. Indeed, a high number of *Candida* spp. are detected in association with a bacterial infection, namely by gram negative species, in daily practice of our ICU with its high number of surgical patients. The high negative predictive value of PCT for detection of *Candida* spp. by either BC or PCR may represent a useful tool to exclude the presence of candidemia and guide the antifungal treatment regimens in critically ill patients, with the advantage, among others, of costs reduction. [43] In our opinion, the limitations of the study are its retrospective design and the low number of *Candida* spp. BSI analysed, which reflects the low, though increasing, prevalence of *Candida* spp. BSI [3,44,45]. Another limitation may originate from the characteristic epidemiology of pathogens causing BSI in our general ICU with a high admission rate of surgical patients. Among them we observe the predominance of the abdominal surgical patient who frequently underwent an emergency procedure. This setting leads to the high prevalence of Gram negative pathogens in our population as responsible for BSI, either alone or in association with *Candida* spp. [1,46,47]. However, patients with complicated abdominal surgery (i.e. secondary peritonitis) are at high risk of *Candida* spp. BSI and this population would benefit from a validated marker for this

Table 7 Logistic regression PCR

Variable	Variable type	β coefficient	Standard error	P value
PCT	Continuous	-0.07	0.016	< 0.0001
Subsequent Diagnostic episode	Dichotomous	1.38	0.33	< 0.0001

Variables not included in the model: age, sex, SOFA score, Surgical, WBC, Septic Shock. (Hosmer & Lemeshow test: chi-square: 99.7, p < 0.0001).

Table 8 *Candida* spp. detected (according to BC results) and their PCT values (median)

<i>Candida</i> spp	Diagnostic episodes (%)	PCT value Median (I.Q.)
<i>C. Albicans</i>	13 (59.0)	1.32 (0.92 - 2.0)
<i>C. non albicans</i>	9 (41.0)	0.92 (0.68 - 1.98)
<i>C. Parapsilosis</i>	6 (27.3)	0.90 (0.83 - 1.29)
<i>C. glabrata</i>	1 (4.5)	2.98
<i>C. krusei</i>	2 (9.1)	1.58 (0.12 - 3.05)
<i>C. tropicalis</i>	0	

I.Q. interquartile range.
 Albicans vs non albicans p = 0.36.

kind of infection [48]. Previous studies reported a higher level of PCT for Gram negative BSI than in patients with a BSI caused by a Gram positive infection, leading to the conclusion that PCT may represent a useful tool in differentiating Gram positive from Gram negative BSI. Nevertheless, this study was not designed to reach this goal. In our opinion, it is unlikely that Gram positive bacteria could have influenced PCT values both in bacterial and mixed BSI, given their low prevalence. Finally, different data show the higher sensitivity of home-made PCR compared to non home-made PCR techniques for fungal species detection [17]. The lower diagnostic performance of PCT - analysed for PCR results prediction (Figure 5) - may be explained by the lower specificity for living yeast since PCR technique aims at identifying solely pathogen DNA molecules. Nevertheless, BC is still considered the gold standard for comparison of alternative diagnostic methods [7] and our results may be interpreted in light of BC findings.

Conclusions

According to our data, PCT determination represents a useful diagnostic tool to exclude the presence of *Candida* spp. in BSI of critically ill patients. It may be adopted as a component of a diagnostic strategy aiming to limit the unwarranted use of antifungal agents.

Table 9 *Candida* spp. detected (according to PCR results) and their PCT values (median)

<i>Candida</i> spp	Diagnostic episodes (%)	PCT value Median (I.Q.)
<i>C. Albicans</i>	14 (46.7)	1.32 (0.97 - 2.29)
<i>C. non albicans</i>	16 (53.3)	1.08 (0.86 - 1.60)
<i>C. Parapsilosis</i>	10 (33.3)	0.92 (0.84 - 1.20)
<i>C. glabrata</i>	3 (10)	2.09 (1.21 - 2.98)
<i>C. krusei</i>	2 (6.7)	1.58 (0.12 - 3.05)
<i>C. tropicalis</i>	1 (3.3)	1.56

I.Q. interquartile range.
 Albicans vs non albicans p = 0.25.

Key messages

- Procalcitonin shows a high negative predictive value for detection of *Candida* spp. by blood culture or polymerase chain reaction either alone or in a mixed infection with bacteria.
- Procalcitonin may represent a useful tool for the diagnostic workup of critically ill patients with *Candida* bloodstream infections.

Abbreviations

AUC: Area under the curve; BC: Blood culture; BSI: Blood stream infection; ICU: Intensive care unit; IR: Interquartile range; NPV: Negative predictive value; PCR: Polymerase chain reaction; PCT: Procalcitonin; PPV: Positive predictive value; ROC: Receiver operating characteristic; SD: Standard deviation; SOFA: Sequential organ failure assessment; SPP: Species; WBC: White blood count.

Competing interests

The authors declare that they have no competing interests.

Authors' contributions

AC conceived the study, participated in data collection, performed the statistical analysis and draft the manuscript; VR participated in the design of the study, in data collection and draft the manuscript; FM participated in data collection and draft the manuscript; GF participated in data collection and draft the manuscript; GA participated in data collection and draft the manuscript; CP participated in data collection and revised the manuscript adding important intellectual content; SMR participated in the design of the study and in data collection; AG conceived the study and revised the manuscript adding important intellectual content. All authors read and approved the final manuscript.

Acknowledgment

A preliminary version of this study was presented at the SMART (Simposio Mostra Anestesia Rianimazione e Terapia Intensiva) conference in Milan, 8–10 May 2013. We thank Prof. Simonetta Genova for her contribution to English language editing of our manuscript.

Received: 24 October 2013 Accepted: 12 February 2014

Published: 21 February 2014

References

1. Vincent J-L, Rello J, Marshall J, Silva E, Anzueto A, Martin CD, Moreno R, Lipman J, Gomersall C, Sakr Y: **International study of the prevalence and outcomes of infection in intensive care units.** *JAMA* 2009, **302**(21):2323–2329.
2. Wisplinghoff H, Bischoff T, Tallent SM, Seifert H, Wenzel RP, Edmond MB: **Nosocomial bloodstream infections in US hospitals: analysis of 24,179 cases from a prospective nationwide surveillance study.** *Clin Infect Dis* 2004, **39**(3):309–317.
3. Kett DH, Azoulay E, Echeverria PM, Vincent J-L: **Candida bloodstream infections in intensive care units: Analysis of the extended prevalence of infection in intensive care unit study*.** *Crit Care Med* 2011, **39**(4):665–670.
4. Morrell M, Fraser VJ, Kollef MH: **Delaying the empiric treatment of *Candida* bloodstream infection until positive blood culture results are obtained: a potential risk factor for hospital mortality.** *Antimicrob Agents Chemother* 2005, **49**(9):3640–3645.
5. Patel GP, Simon D, Scheetz M, Crank CW, Lodise T, Patel N: **The effect of time to antifungal therapy on mortality in candidemia associated septic shock.** *Am J Ther* 2009, **16**(6):508–511.
6. Morgan J, Meltzer MI, Plikaytis BD, Sofair AN, Huie-White S, Wilcox S, Harrison LH, Seaberg EC, Hajjeh RA, Teutsch SM: **Excess mortality, hospital stay, and cost due to candidemia: a case-control study using data from population-based candidemia surveillance.** *Infect Control Hosp Epidemiol* 2005, **26**(6):540–547.
7. Cuenca-Estrella M, Verweij PE, Arendrup MC, Arkan-Akdagli S, Bille J, Donnelly JP, Jensen HE, Lass-Flörl C, Richardson MD, Akova M: **ESCMID* guideline for the diagnosis and management of *Candida* diseases 2012: diagnostic procedures.** *Clin Microbiol Infect* 2012, **18**(5):9–18.
8. Pappas PG, Kauffman CA, Andes D, Benjamin DK, Calandra TF, Edwards JE, Filler SG, Fisher JF, Kullberg B-J, Zeichner LO, Reboli AC, Rex JH, Walsh TJ, Sobie JD: **Clinical Practice Guidelines for the Management of Candidiasis: 2009 Update by the Infectious Diseases Society of America.** *Clin Infect Dis* 2009, **48**(5):503–535.
9. Cornely OA, Bassetti M, Calandra T, Garbino J, Kullberg B-J, Lortholary O, Meersseman W, Akova M, Arendrup M, Arkan Akdagli S: **ESCMID* guideline for the diagnosis and management of *Candida* diseases 2012: nonneutropenic adult patients.** *Clin Microbiol Infect* 2012, **18**(5):19–37.
10. Held J, Kohlberger I, Rappold E, Grawitz AB, Häcker G: **Comparison of (1 → 3)-β-D-Glucan, Mannan/Anti-Mannan Antibodies, and Cand-Tec *Candida* Antigen as Serum Biomarkers for Candidemia.** *J Clin Microbiol* 2013, **51**(4):1158–1164.
11. Albert O, Toubas D, Strady C, Cousson J, Delmas C, Vernet V, Villena I: **Reactivity of (1 → 3)-β-D-glucan assay in bacterial bloodstream infections.** *Eur J Clin Microbiol Infect Dis* 2011, **30**(11):1453–1460.
12. Kanamori H, Kanemitsu K, Miyasaka T, Ameku K, Endo S, Aoyagi T, Inden K, Hatta M, Yamamoto N, Kunishima H: **Measurement of (1–3)-β-D-glucan derived from different gauze types.** *Tohoku J Exp Med* 2009, **217**(2):117–121.
13. Koo S, Bryar JM, Page JH, Baden LR, Marty FM: **Diagnostic performance of the (1 → 3)-β-D-glucan assay for invasive fungal disease.** *Clin Infect Dis* 2009, **49**(11):1650–1659.
14. Digby J, Kalbfleisch J, Glenn A, Larsen A, Browder W, Williams D: **Serum glucan levels are not specific for presence of fungal infections in intensive care unit patients.** *Clin Diagn Lab Immunol* 2003, **10**(5):882–885.
15. Mikulska M, Calandra T, Sanguinetti M, Poulain D, Viscoli C: **The use of mannan antigen and anti-mannan antibodies in the diagnosis of invasive candidiasis: recommendations from the Third European Conference on Infections in Leukemia.** *Crit Care* 2010, **14**(6):R222.
16. Kourkoumpetis TK, Fuchs BB, Coleman JJ, Desaleramos A, Mylonakis E: **Polymerase Chain Reaction-Based Assays for the Diagnosis of Invasive Fungal Infections.** *Clin Infect Dis* 2012, **54**(9):1322–1331.
17. Avni T, Leibovici L, Paul M: **PCR diagnosis of invasive candidiasis: systematic review and meta-analysis.** *Eur J Clin Microbiol* 2011, **49**(2):665–670.
18. Wacker C, Prkno A, Brunkhorst FM, Schlattmann P: **Procalcitonin as a diagnostic marker for sepsis: a systematic review and meta-analysis.** *Lancet Infect Dis* 2013.
19. Balci C, Sungurtekin H, Gürses E, Sungurtekin U, Kaptanoglu B: **Usefulness of procalcitonin for diagnosis of sepsis in the intensive care unit.** *Crit Care* 2003, **7**(1):85.
20. Tang BM, Eslick GD, Craig JC, McLean AS: **Accuracy of procalcitonin for sepsis diagnosis in critically ill patients: systematic review and meta-analysis.** *Lancet Infect Dis* 2007, **7**(3):210–217.
21. Bouadma L, Luyt C-E, Tubach F, Cracco C, Alvarez A, Schwebel C, Schortgen F, Lasocki S, Veber B, Dehoux M: **Use of procalcitonin to reduce patients' exposure to antibiotics in intensive care units (PRORATA trial): a multicentre randomised controlled trial.** *Lancet* 2010, **375**(9713):463–474.
22. Martini A, Gottin L, Menestrina N, Schweiger V, Simion D, Vincent J-L: **Procalcitonin levels in surgical patients at risk of candidemia.** *J Infect* 2010, **60**(6):425–430.
23. Charles PE, Dalle F, Aho S, Quenot J-P, Doise J-M, Aube H, Olsson N-O, Blettery B: **Serum procalcitonin measurement contribution to the early diagnosis of candidemia in critically ill patients.** *Intensive Care Med* 2006, **32**(10):1577–1583.
24. Brodská H, Malíčková K, Adámková V, Benáková H, Stastná MM, Zima T: **Significantly higher procalcitonin levels could differentiate Gram-negative sepsis from Gram-positive and fungal sepsis.** *Clin Exp Med* 2012:1–6.
25. Dellinger RP, Levy MM, Carlet JM, Bion J, Parker MM, Jaeschke R, Reinhart K, Angus DC, Brun-Buisson C, Beale R: **Surviving Sepsis Campaign: international guidelines for management of severe sepsis and septic shock: 2008.** *Intensive Care Med* 2008, **34**(1):17–60.
26. Vincent J-L, De Mendonça A, Cantraine F, Moreno R, Takala J, Suter PM, Sprung CL, Colardyn F, Blecher S: **Use of the SOFA score to assess the incidence of organ dysfunction/failure in intensive care units: results of a multicenter, prospective study.** *Crit Care Med* 1998, **26**(11):1793–1800.

27. WJ C: *Practical non parametric statistics*. 3rd edition. New York: John Wiley & Son; 1999.
28. Bassetti M, Mikulska M, Viscoli C: **Bench-to-bedside review: Therapeutic management of invasive candidiasis in the intensive care unit.** *Crit Care* 2010, **14**(6):244.
29. Fernandez J, Erstad BL, Petty W, Nix DE: **Time to positive culture and identification for Candida blood stream infections.** *Diagn Microbiol Infect Dis* 2009, **64**(4):402–407.
30. Guery BP, Arendrup MC, Auzinger G, Azoulay É, Sá MB, Johnson EM, Müller E, Putensen C, Rotstein C, Sganga G: **Management of invasive candidiasis and candidemia in adult non-neutropenic intensive care unit patients: Part II. Treatment.** *Intensive Care Med* 2009, **35**(2):206–214.
31. Posteraro B, De Pascale G, Tumbarello M, Torelli R, Pennisi MA, Bello G, Maviglia R, Fadda G, Sanguinetti M, Antonelli M: **Early diagnosis of candidemia in intensive care unit patients with sepsis: a prospective comparison of (1 → 3)-β-D-glucan assay, Candida score, and colonization index.** *Crit Care* 2011, **15**(5):R249.
32. Presterl E, Parschalk B, Bauer E, Lassnigg A, Hajdu S, Graninger W: **Invasive fungal infections and (1, 3)-β-D-glucan serum concentrations in long-term intensive care patients.** *Int J Infect Dis* 2009, **13**(6):707–712.
33. Nakao A, Yasui M, Kawagoe T, Tamura H, Tanaka S, Takagi H: **False-positive endotoxemia derives from gauze glucan after hepatectomy for hepatocellular carcinoma with cirrhosis.** *Hepatogastroenterology* 1997, **44**(17):1413–1418.
34. Karageorgopoulos DE, Vouloumanou EK, Ntziora F, Michalopoulos A, Rafailidis PI, Falagas ME: **β-D-glucan assay for the diagnosis of invasive fungal infections: a meta-analysis.** *Clin Infect Dis* 2011, **52**(6):750–770.
35. Ellis M, Al-Ramadi B, Bernsen R, Kristensen J, Alizadeh H, Hedstrom U: **Prospective evaluation of mannan and anti-mannan antibodies for diagnosis of invasive Candida infections in patients with neutropenic fever.** *J Med Microbiol* 2009, **58**(5):606–615.
36. Arendrup M, Bergmann O, Larsson L, Nielsen H, Jarløv J, Christensson B: **Detection of candidaemia in patients with and without underlying haematological disease.** *Clin Microbiol Infect* 2010, **16**(7):855–862.
37. Montagna M, Coretti C, Caggiano G: **Procalcitonin: a possible marker of invasive fungal infection in high risk patients?** *J Prev Med Hyg* 2011, **52**(1):38.
38. Hotchkiss RS, Monneret G, Payen D: **Immunosuppression in sepsis: a novel understanding of the disorder and a new therapeutic approach.** *Lancet Infect Dis* 2013, **13**(3):260–268.
39. Hotchkiss RS, Opal S: **Immunotherapy for sepsis—a new approach against an ancient foe.** *N Engl J Med* 2010, **363**(1):87–89.
40. Chang KC, Burnham C-A, Compton SM, Rasche DP, Mazuski RJ, Macdonough JS, Unsinger J, Korman AJ, Green JM, Hotchkiss RS: **Blockade of the negative co-stimulatory molecules PD-1 and CTLA-4 improves survival in primary and secondary fungal sepsis.** *Crit Care* 2013, **17**(3):R85.
41. Otto GP, Sossdorf M, Claus RA, Rodel J, Menge K, Reinhart K, Bauer M, Riedemann NC: **The late phase of sepsis is characterized by an increased microbiological burden and death rate.** *Crit Care* 2011, **15**:R183.
42. Charles PE, Ladoire S, Snauwaert A, Prin S, Aho S, Pechinot A, Olsson N-O, Blettery B, Doise J-M, Quenot J-P: **Impact of previous sepsis on the accuracy of procalcitonin for the early diagnosis of blood stream infection in critically ill patients.** *BMC Infect Dis* 2008, **8**(1):163.
43. Ha YE, Peck KR, Joo E-J, Kim SW, Jung S-I, Chang HH, Park KH, Han SH: **Impact of first-line antifungal agents on the outcomes and costs of candidemia.** *Antimicrob Agents Chemother* 2012, **56**(7):3950–3956.
44. Arendrup MC: **Epidemiology of invasive candidiasis.** *Curr Opin Crit Care* 2010, **16**(5):445–452.
45. Arendrup MC, Bruun B, Christensen JJ, Fuursted K, Johansen HK, Kjældgaard P, Knudsen JD, Kristensen L, Møller J, Nielsen L: **National surveillance of fungemia in Denmark (2004 to 2009).** *J Clin Microbiol* 2011, **49**(1):325–334.
46. Moore LJ, McKinley BA, Turner KL, Todd SR, Sucher JF, Valdivia A, Sailors RM, Kao LS, Moore FA: **The epidemiology of sepsis in general surgery patients.** *J Trauma Acute Care Surg* 2011, **70**(3):672–680.
47. Sartelli M, Catena F, Ansaloni L, Moore E, Malangoni M, Velmahos G, Coimbra R, Koike K, Leppaniemi A, Biffl W: **Complicated intra-abdominal infections in a worldwide context: an observational prospective study (CIAOW Study).** *World J Emerg Surg* 2013, **8**(1):1.
48. Eckmann C, Dryden M, Montravers P, Kozlov R, Sganga G: **Antimicrobial Treatment of "Complicated" Intra-Abdominal Infections and The New IDSA Guidelines—A Commentary and an Alternative European Approach According to Clinical Definitions.** *Eur J Med Res* 2011, **16**(3):115.

doi:10.1186/1471-2253-14-9

Cite this article as: Cortegiani et al.: Procalcitonin as a marker of Candida species detection by blood culture and polymerase chain reaction in septic patients. *BMC Anesthesiology* 2014 **14**:9.

Submit your next manuscript to BioMed Central and take full advantage of:

- Convenient online submission
- Thorough peer review
- No space constraints or color figure charges
- Immediate publication on acceptance
- Inclusion in PubMed, CAS, Scopus and Google Scholar
- Research which is freely available for redistribution

Submit your manuscript at
www.biomedcentral.com/submit

