

RESEARCH

Open Access



Results of the observational prospective RealFLOT study

Elisa Giommoni¹, Daniele Lavacchi¹, Giuseppe Tirino², Lorenzo Fornaro³, Francesco Iachetta⁴, Carmelo Pozzo⁵, Maria Antonietta Satolli⁶, Andrea Spallanzani⁷, Marco Puzzoni⁸, Silvia Stragliotto⁹, Michele Sisani¹⁰, Vincenzo Formica¹¹, Filippo Giovanardi¹², Antonia Strippoli⁵, Michele Prisciandaro¹³, Samantha Di Donato¹⁴, Luca Pompella², Irene Pecora³, Alessandra Romagnani⁴, Sara Fancelli¹, Marco Brugia¹, Serena Pillozzi¹, Ferdinando De Vita² and Lorenzo Antonuzzo^{1,15,16*}

Abstract

Background: Perioperative FLOT (5-fluorouracil, oxaliplatin and docetaxel) has recently become the gold standard treatment for fit patients with operable gastric (GC) or gastroesophageal (GEJ) adenocarcinoma, getting a 5-year overall survival (OS) of 45%, over 23% with surgery alone.

Methods: RealFLOT is an Italian, multicentric, observational trial, collecting data from patients with resectable GC or GEJ adenocarcinoma treated with perioperative FLOT. Aim of the study was to describe feasibility and safety of FLOT, pathological complete response rate (pCR), surgical outcomes and overall response rate (ORR) in an unselected real-world population. Additional analyses evaluated the correlation between pCR and survival and the prognostic role of microsatellite instability (MSI) status.

Results: Of 206 patients enrolled that received perioperative FLOT at 15 Italian centers, 124 (60.2%) received at least 4 full-dose cycles, 190 (92.2%) underwent surgery, and 142 (68.9%) started the postoperative phase. Among patients who started the postoperative phase, 105 (51.0%) received FLOT, while 37 (18%) received de-intensified regimens, depending on clinical condition or previous toxicities. pCR was achieved in 7.3% of cases. Safety profile was consistent with literature. Neutropenia was the most common G 3–4 adverse event (AE): 19.9% in the preoperative phase and 16.9% in the postoperative phase. No toxic death was observed and 30-day postoperative mortality rate was 1.0%. ORR was 45.6% and disease control rate (DCR) was 94.2%. Disease-free survival (DFS) and OS were significantly longer in case of pCR ($p = 0.009$ and $p = 0.023$, respectively). A trend towards better DFS was observed among MSI-H patients.

Conclusions: These real-world data confirm the feasibility of FLOT in an unselected population, representative of the clinical practice. pCR rate was lower than expected, nevertheless we confirm pCR as a predictive parameter of survival. In addition, MSI-H status seems to be a positive prognostic marker also in patients treated with taxane-containing triplets.

Keywords: FLOT, Perioperative chemotherapy, Gastric cancer, Gastro-oesophageal junction adenocarcinoma, pCR, MSI

* Correspondence: lorenzo.antonuzzo@unifi.it

¹Medical Oncology Unit, AOU Careggi, Florence, Italy

¹⁵Department of Experimental and Clinical Medicine, University of Firenze, Florence, Italy

Full list of author information is available at the end of the article



© The Author(s). 2021 **Open Access** This article is licensed under a Creative Commons Attribution 4.0 International License, which permits use, sharing, adaptation, distribution and reproduction in any medium or format, as long as you give appropriate credit to the original author(s) and the source, provide a link to the Creative Commons licence, and indicate if changes were made. The images or other third party material in this article are included in the article's Creative Commons licence, unless indicated otherwise in a credit line to the material. If material is not included in the article's Creative Commons licence and your intended use is not permitted by statutory regulation or exceeds the permitted use, you will need to obtain permission directly from the copyright holder. To view a copy of this licence, visit <http://creativecommons.org/licenses/by/4.0/>. The Creative Commons Public Domain Dedication waiver (<http://creativecommons.org/publicdomain/zero/1.0/>) applies to the data made available in this article, unless otherwise stated in a credit line to the data.

Background

Gastric cancer (GC) is the fifth most common cancer and the third most common cause of cancer mortality worldwide, with an estimated 783,000 deaths in 2018 [1]. Efforts to improve the outcome of GC remain a relevant medical issue.

Over the last 15 years, major advances in the multimodal treatment for GC, due to multiple phase III studies showing survival benefits for several perioperative chemotherapies (CTs) and adjuvant treatment strategies, have changed clinical management of the disease. Perioperative CT became a standard of care in Europe for resectable GC based on the results of the MAGIC [2] and FNCLCC/FFCD 9703 [3] trials that showed a significant improvement in overall survival (OS) for patients treated with preoperative CT (epirubicin, cisplatin, and 5-fluorouracil [ECF] in MAGIC trial and cisplatin, and 5-fluorouracil in FNCLCC/FFCD trial), as compared with surgery alone.

Docetaxel has been proven to exert significant activity in GC in several clinical trials and in different settings [4, 5], however classical DCF (docetaxel, cisplatin, and 5-fluorouracil) regimen was associated with high incidence of grade (G) 3–4 toxicities, including neutropenia in 82%, stomatitis in 21%, and diarrhea in 19% [4]. Docetaxel-based modified regimens as FLOT, consisting of 5-fluorouracil, leucovorin, oxaliplatin and docetaxel, have proved to be active in terms of complete pathological regression and to be more tolerable than classical DCF [6–8].

Recently, Al-Batran and colleagues [8, 9] showed that FLOT can be considered as a new standard of care in perioperative setting for locally advanced resectable gastric or gastro-oesophageal junction (GEJ) adenocarcinoma as it showed significant OS improvement compared to conventional ECF/ECX.

Despite these important findings, very few data concerning FLOT regimen in the real-world setting to date are available.

RealFLOT is an Italian, multicentric observational study, with the aim to describe the feasibility and activity in terms of pathological responses and survival outcomes of perioperative FLOT administered in routine clinical practice in patients with resectable gastric or GEJ cancer.

Patients and methods

Study population

This prospective observational study was approved by Institutional review board of Azienda Ospedaliero-Universitaria Careggi (Comitato Etico Regionale for clinical experimentation of Toscana region – Italy – Area Vasta Centro - 12818_oss) and by the review boards of all participating 15 Italian centers starting from September

2016. We obtained informed consent from each alive patient enrolled in the study. We collected clinical data from patients receiving perioperative FLOT treatment as established by routine clinical practice from September 2016 to September 2019.

The study population consisted of patients with histologically confirmed diagnosis of gastric or GEJ adenocarcinoma with clinical stage cT2 or higher and/or nodal involvement referring to the 7th edition of the International Union Against Cancer Tumour–Node–Metastasis classification, and suitable to undergo a R0–R1 resection, according to local surgical evaluation [10]. Clinical stage was assessed according to clinical local practice, routinely with CT scan. FDG-PET scan, US-endoscopy and diagnostic laparoscopy were not habitually used in clinical practice in all enrolling centers for staging.

Primary tumor location was classified according to Sievert for GEJ cancer [11]. Inclusion criteria also required at least 18 years of age and written informed consent. In contrast, patients with oesophageal cancer, squamous histology or metastatic disease at the time of initial diagnosis were excluded. All patients received at least one cycle of perioperative FLOT regimen, which consisted of 5-fluorouracil 2600 mg/m² as 24-h infusion on day 1, leucovorin 200 mg/m² on day 1, oxaliplatin 85 mg/m² on day 1, and docetaxel 50 mg/m² on day 1. All drugs were administered intravenously every 2 weeks. Dose modifications and delays, and treatment discontinuations were performed at the investigator's discretion according to the observational nature of the study.

Data collection and study endpoints

Clinical data including all available demographic information, medical history, diagnosis, chemotherapy, surgery including timing, type (total/subtotal gastrectomy and/or transhiatal/transsthoracic esophagectomy), margin of resection (R0, R1, R2), lymphadenectomy (D1, D2, D3), pathological results, molecular analysis, microsatellite instability (MSI) status, clinical outcomes, adverse events (AEs), and laboratory alterations were collected from patients' medical records. AEs were graded according to the National Cancer Institute Common Terminology Criteria for AEs version 4.03. Radiological response was assessed according to RECIST, version 1.1 [12]. It was also required to specify whether the pathological response was classified according to the Becker regression criteria [13].

The two primary endpoints were the evaluation of feasibility of perioperative FLOT and the assessment of pathological complete response (pCR) rate, in an Italian real-world patient population. pCR rate was defined as the proportion of patients with absence of residual

tumor cells at pathological examination after preoperative CT.

The secondary endpoints were overall response rate (ORR), disease control rate (DCR), disease-free survival (DFS), and OS. Treatment adherence, safety, and correlation of clinical, biological and pathological factors with pathological response and survival outcomes were analyzed.

Immunohistochemical staining of MMR proteins

Immunohistochemistry for the four most common mismatch repair proteins (MMR) MLH1, MSH2, MSH6 and PMS2 was evaluated at each enrolling center. Immunohistochemical staining was performed on formalin-fixed, paraffin-embedded tissue sections following manufacturer's instructions according to local clinical practice and Italian Guidelines [14].

Statistical analysis

Demographic and clinical data, safety and treatment exposure were analyzed using descriptive statistics. OS was defined as the time from the start of treatment to death from any cause. DFS was defined as the time from the start of treatment to disease progression, relapse, or death from any cause, whichever occurred first. Statistical comparisons for categorical variables were performed using χ^2 test. Time-to-event endpoints were estimated using the Kaplan–Meier method. Survival distributions for specific subgroups of patients were tested with log-rank test. Parameters with a statistically significant log-rank test were included in the multivariate Cox proportional hazard regression linear model to compare hazard ratio (HR) and 95% confidence interval (95% CI). A p -value of 0.05 or lower was considered to be statistically significant. Analyses were performed using Jamovi (www.jamovi.org) and R studio.

Results

Patient characteristics

Between September 2016 and September 2019, a total of 206 patients received perioperative FLOT regimen at 15 Italian centers: 141 patients (68%) were male and 65 (32%) were female. The median age was 63 years (range 36–77). The percentage of patients ≥ 65 years was 43%. Primary tumor locations (stomach and GEJ) were represented with similar rates (55 and 45%, respectively). All patients had a good clinical condition, with an ECOG performance status (PS) 0 or 1. The histological type on diagnostic biopsy was assessed by local pathologists. According to the Lauren classification, a diffuse type adenocarcinoma was reported in 13% of patients ($n = 27$), intestinal in 18.0% ($n = 37$) and mixed in 5.0% ($n = 11$). Unfortunately, Lauren subtype has not been

specified in 64% of cases. The presence of signet ring cells was reported in 15.0% ($n = 31$) of cases.

At the time of initial diagnosis, clinical stage T3–4 was reported in 87% ($n = 180$) of patients and nodal involvement in 84% ($n = 174$). The baseline demographic and disease characteristics are shown in Table 1.

Table 1 Baseline demographic and disease characteristics of a cohort ($n = 206$) of resectable GC and GEJ adenocarcinoma patients treated with perioperative FLOT in a real-world setting

	Patients N (%)
Sex	
Male	141 (68%)
Female	65 (32%)
Age (y)	
Median (range)	63 (36–77)
< 65 years	117 (57%)
≥ 65 years	89 (43%)
ECOG PS	
0	189 (92%)
1	17 (8%)
Location	
Stomach	114 (55%)
GEJ	92 (45%)
Lauren's type	
Intestinal	37 (18%)
Diffuse	27 (13%)
Mixed	11 (5%)
Not evaluable according to Lauren	134 (64%)
Signet ring cells	
Yes	31 (15%)
Not specified	175 (85%)
cT	
T1–2	26 (13%)
T3–4	180 (87%)
cN	
N0	32 (16%)
N1	61 (30%)
N2	73 (35%)
N3	40 (19%)
Grading	
G1	4 (2%)
G2	16 (8%)
G3	114 (55%)
Missing	72 (35%)

Abbreviations: FLOT fluorouracil, leucovorin, oxaliplatin, and docetaxel; G grade; GEJ gastro-oesophageal junction; ECOG Eastern Cooperative Oncology Group; PS performance status

Data about MSI status were available in 93 patients: 9 of those (9.7%) were MSI-H. In the MSI-H subgroup the median age was 72 years (range 57–75), 4 patients were female and 5 male. Primary tumor location was stomach in 89% and GEJ in 11%. At the time of the diagnosis, 6 patients had a stage III cancer, 2 patients had stage II, and one patient stage I (Table 2).

Treatment exposure

Treatment exposure data are shown in Fig. 1. In the preoperative phase, 186 out of 206 patients (90.3%) received at least 4 preoperative cycles of CT regardless of dose reduction or de-intensification, with a median number of cycles of 4 (range 1–8). One hundred twenty-four patients (60.2%) received FLOT for at least 4 full-dose cycles. Dose reduction, discontinuation or de-intensification were required for the remaining 82 patients (39.8%). Treatment discontinuation occurred in 5.8% ($n = 12$) of patients in the preoperative phase, mainly due to unacceptable toxicity.

A total of 142 patients (68.9%) started the postoperative phase. Among these patients, 105 (51.0% of the study population) received FLOT and 37 (18%) received less intensive regimens (e.g. mFOLFOX6 [5-fluorouracil, leucovorin, and oxaliplatin], infusive 5FU/leucovorin or capecitabine). The main reasons for administering a less intensive treatment regimen or not administering the postoperative phase at all were due to the clinical conditions after surgery and/or toxicities experienced in the preoperative phase.

Eight patients received a radiation therapy, 3 of whom after R1 resection. The median number of postoperative cycles of any regimen was 4 (range 1–11). Overall, only 28 patients (13.6%) received FLOT for at least 4 full-dose cycles in the postoperative phase. In contrast, 77 patients (37.3%) required dose reduction, treatment discontinuation or de-intensification. Among patients who started the postoperative phase, a treatment discontinuation of

12.0% was observed. At the time of this analysis, 4 patients were still under postoperative treatment.

Safety

Grade 3–4 AEs were reported in Table 3. Neutropenia was the most commonly reported G 3–4 AE both in the preoperative and postoperative phase, with an incidence of 19.9 and 16.9%, respectively. However, febrile neutropenia was experienced by only 4.4% of patients in the preoperative phase and 1.4% of patients in the postoperative phase. Granulocyte-colony stimulating factors (G-CSFs) were administered as primary or secondary prophylaxis in 69.0% of patients in the preoperative phase and in 58.4% of patients who started the postoperative phase.

The frequency of gastrointestinal G 3–4 AEs was higher in the postoperative phase than in the preoperative phase (14.0 and 6.5%), including nausea in 5.6 and 2.4%, diarrhea in 3.5 and 1.5%, and stomatitis in 1.5 and 0.5%, respectively. Moreover, a non-negligible incidence of other G 3–4 AEs was reported, including infectious complications in 5.8 and 3.5% and thromboembolic events in 2.4 and 1.4%, respectively. Notably, a low incidence of G 3–4 peripheral neuropathy (1 and 2.8%, respectively) was observed. At the time of the last follow-up, however, G1 neurotoxicity was reported in 15% of patients, G2 in 2.9%, and G3 in 1.0%.

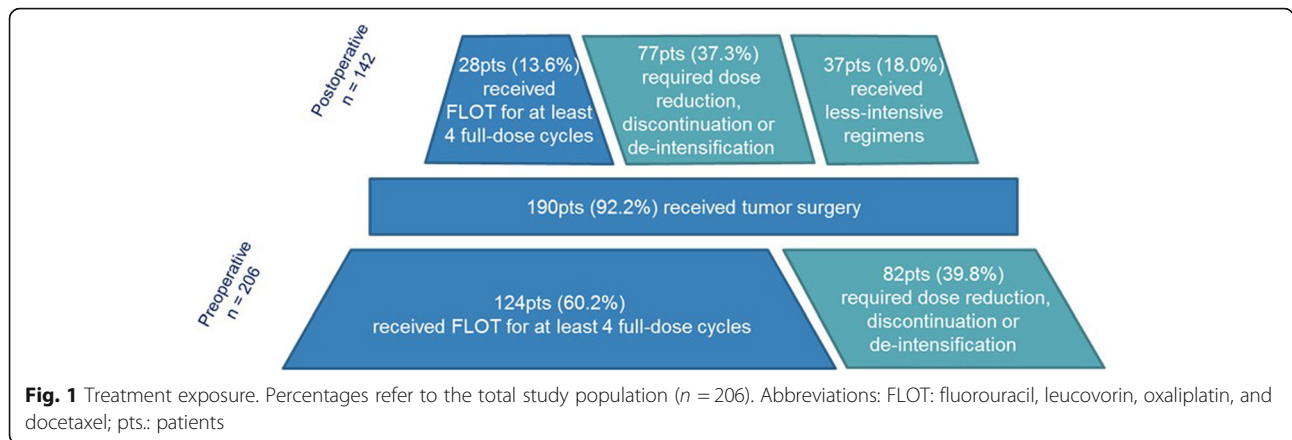
Mortality rates at 30, 60, and 90 days for resected patients were 1.0, 2.1, and 4.7%, respectively; unfortunately, the comprehensive data regarding surgical morbidity were unavailable.

No differences were registered between patients aged < 65 and ≥ 65 years in terms of perioperative mortality, while a trend towards a higher incidence of $G \geq 3$ AEs affecting the elderly was observed in preoperative phase ($p = 0,014$), especially when considering gastrointestinal toxicities ($p < 0,00001$).

Table 2 Demographic and disease characteristics of MSI-H patients treated with perioperative FLOT in a real-world setting

MSI-H patient	Sex	Age at the time of diagnosis (years)	Primary tumor location	Lauren's type	Baseline clinical stage	Clinical response
N1	Male	75	GC	NA	III	PR
N2	Female	65	GC	NA	III	PR
N3	Female	72	GC	Intestinal	III	SD
N4	Male	57	GC	Mixed	II	SD
N5	Male	73	GC	Diffuse	I	SD
N6	Male	73	GC	Intestinal	III	SD
N7	Male	69	GEJ	Intestinal	III	PD
N8	Female	73	GC	Diffuse	III	PR
N9	Female	67	GC	NA	II	SD

Abbreviations: GC gastric cancer; GEJ gastro-oesophageal junction; MSI-H microsatellite instability-high; NA not assessed; PD progressive disease; PR partial response; SD stable disease



Surgical and pathological findings

A total of 191 out of 206 patients (92.7%) had surgical resection. One of these patients was lost to follow-up after surgery and it was not possible to recover the clinical-pathological details; therefore, subsequent analyses considered 190 operated patients (92.0%) whose clinical information were available.

The main reasons for not proceeding to radical surgery were the detection of metastatic disease at exploratory laparoscopy in 3 patients, disease progression in 9, and not specified in 3.

Surgical and pathology results are shown in Table S1 (Supplementary). Of 190 patients undergoing surgery, 81 underwent a total gastrectomy (42.6%) and 52 a subtotal

gastrectomy (26.4%). Of the remaining patients (30.0%) who underwent esophagectomy, the majority received a transthoracic procedure (17.4%). The vast majority of operated patients underwent D2 lymphadenectomy (82.1%) and R0 resection (92.1%). Surgery was performed 4.5 months after diagnosis (median), while the median time from end of neoadjuvant CT to surgery and from surgery to start of adjuvant CT was 0.5 and 1.0 month, respectively. Pathological stage yT0 was obtained in 12.1% of cases and pathologic node-negativity (ypN0) in 31.6%.

In the study population, 15 patients (7.3%) achieved a pCR. In addition, 28 patients (14.7%) achieved a pathological stage I according to the eight edition of the American Joint Committee on Cancer [15]; while

Table 3 Grade 3–4 adverse events

	RealFLOT: Preoperative (n = 206)	RealFLOT: Postoperative (n = 142 ^a)	Patients ≥ 65 in the preoperative phase (n = 89)	Patients < 65 in the preoperative phase (n = 117)	Patients ≥ 65 in the postoperative phase (n = 56 ^a)	Patients < 65 in the postoperative phase (n = 86 ^a)
Hematologic AEs						
Neutropenia	19.9%	16.9%	18.0%	21.4%	14.3%	18.6%
Febrile neutropenia	4.4%	1.4%	4.5%	4.3%	1.8%	1.2%
Anemia	0.5%	0.7%	0%	0.8%	0%	1.2%
Gastrointestinal AEs						
Diarrhea	1.5%	3.5%	2.2%	0.8%	3.6%	3.4%
Stomatitis	0.5%	1.4%	1.1%	0%	1.8%	1.2%
Nausea	2.4%	5.6%	3.4%	1.7%	1.8%	8.1%
Vomiting	1.9%	3.5%	4.5%	0.8%	1.8%	4.6%
Increases in ALT/AST	0.5%	0%	0%	0.8%	0%	0%
Infective events (any G)	5.8%	3.5%	5.6%	6.0%	5.4%	2.3%
Neurotoxic effects	1%	2.8%	2.2%	0%	1.8%	3.5%
Cardiac complications	0.5%	0%	1.1%	0%	0%	0%
Thromboembolic events (any G)	2.4%	1.4%	0%	4.3%	1.8%	1.2%

^a At the time of the interim analysis, 4 patients were still under postoperative treatment
Abbreviations: AE adverse event; G grade

pathological stage II, III and IV resulted in 75 (39.5%), 61 (32.1%), and 11 patients (5.8%), respectively. ORR and DCR were 45.6 and 94.2%, respectively.

Among patients who underwent radical surgery, a pathological downstaging, defined as pathologic stage less than clinical stage, was obtained in 45.5% of cases.

Survival outcomes

At the time of this analysis, 48 of 206 patients (23.3%) died and 3 were lost to follow-up. Seventy-one patients (34.5%) had a rapid disease progression during preoperative phase, relapse after surgery or death. Among patients who had a resective surgery, 3 (1.6%) experienced a local recurrence, 45 (23.7%) distant recurrence, and 8 (4.2%) both local and distant recurrence.

With a median follow-up of 11.9 months, data on OS and DFS were to date immature. However,

both DFS and OS were significantly longer in patients achieving a pCR (DFS: 17.2 months [95% CI 14.0 - NaN] vs NaN, $p = 0.009$; OS: median 27.0 months [95% CI 22.5 - NaN] vs NaN, $p = 0.023$) (Fig. 2) compared with those achieving a non-complete response. Significant differences were observed in DFS and OS also in patients with a pathological stage 0-I than II-IV (DFS $p < 0.001$, OS $p < 0.001$), and 0-II than III-IV (DFS $p < 0.001$, OS $p = 0.003$).

In addition, DFS was significantly longer in patients with ypT0–2 than ypT3–4 ($p = 0.003$), and ypN0 than ypN+ ($p < 0.001$). In contrast, there were no significant differences according to primary tumor location ($p = 0.991$), presence/absence of signet ring cell ($p = 0.709$), age (< 65 years vs ≥ 65 years, $p = 0.890$) and starting postoperative phase with FLOT or less intensive regimens ($p = 0.071$).

For MSS patients DFS was 17.4 months, whereas median DFS was not reached for MSI-H patients (95% CI 14.5 - NaN vs NaN, $p = 0.270$) (Fig. 3).

Univariate analysis showed that ypT ≥ 2 , ypN ≥ 2 , intraoperative detection of metastasis and pathological stage ≥ 3 were negatively associated with DFS, while postoperative CT was positively associated (Table 4). Multivariate analysis confirmed the association between DFS and pathological stage ≥ 3 , intraoperative detection of metastasis, and postoperative CT (Table 4).

As regards OS, univariate analysis showed that ypN ≥ 2 and intraoperative detection of metastasis were negatively associated, while postoperative CT was positively associated (Table 5). Postoperative CT was associated with better OS in multivariate analysis and, on the contrary, ypN ≥ 2 was associated with poor survival (Table 5).

Statistical comparisons

The analysis of clinicopathological factors associated with a lower pathological stage is reported in Table S2. Pathological stage was associated with clinical T stage (X^2 34.20; $p < 0.001$), clinical N stage (X^2 38.61; $p < 0.001$), grading

(X^2 17.09; $p = 0.029$). In contrast, there were no significant differences according to age ($p = 0.473$), sex ($p = 0.326$), ECOG PS at baseline ($p = 0.805$), primary tumor location ($p = 0.324$), at least 4 full-dose preoperative cycles ($p = 0.067$), gastrointestinal G 3–4 AEs ($p = 0.759$), hematological G 3–4 AEs ($p = 0.622$), toxicity-induced dose delay or treatment discontinuation ($p = 0.104$), type of surgery ($p = 0.689$), type of lymphadenectomy ($p = 0.515$), human epidermal growth factor receptor 2 (HER2) status ($p = 0.800$), and Lauren histotype ($p = 0.059$).

Discussion

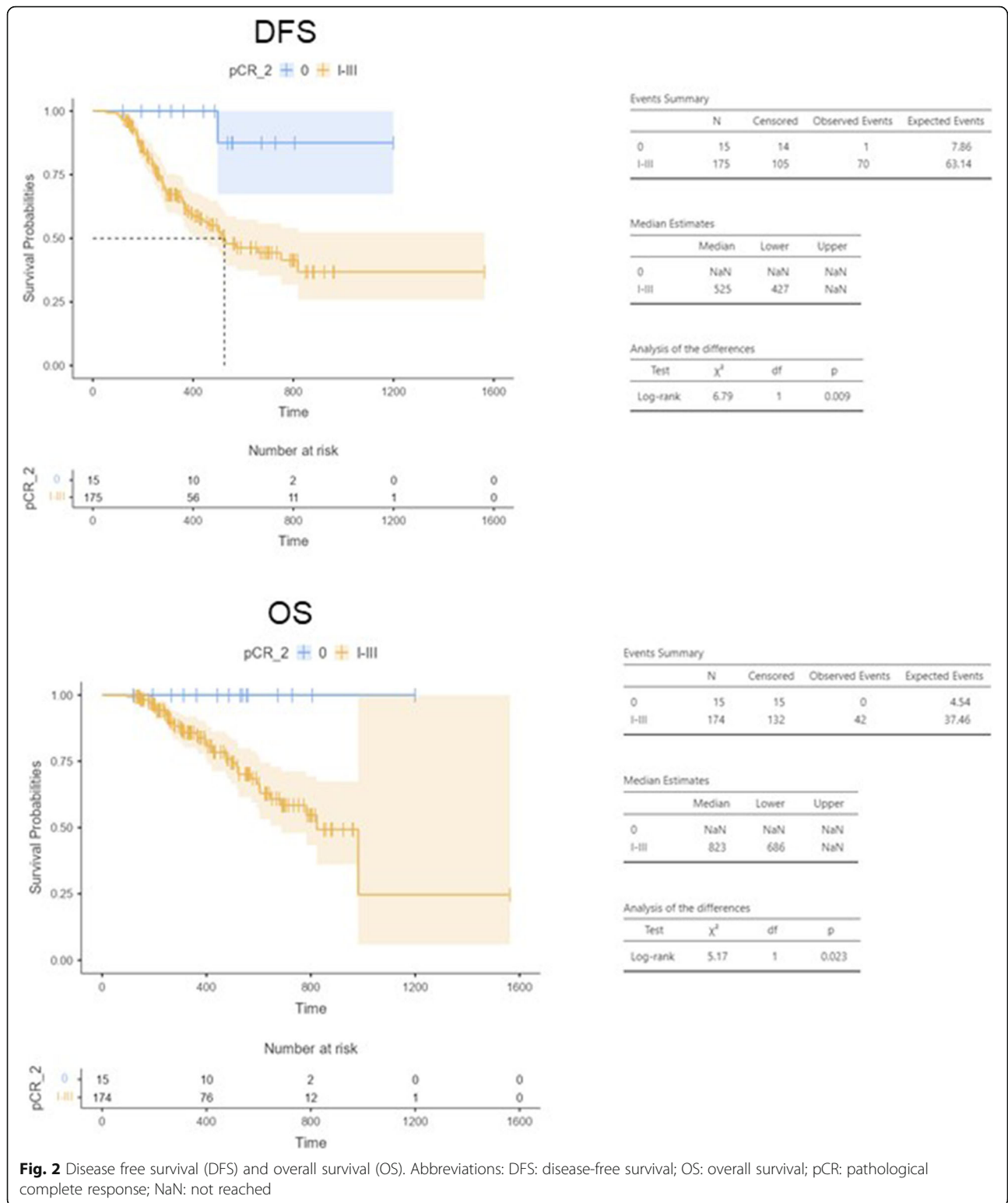
Since the publication of the FLOT4-AIO study, perioperative FLOT is considered the new standard of care in patients with resectable GC or GEJ adenocarcinoma [8, 9]. To date, no large studies have been carried out to assess the safety and efficacy of this regimen in the routine clinical practice. As known, data reported outside clinical trials are crucial to understand whether the results can be transferable to a real-world setting. To this aim, the RealFLOT study described the use of perioperative FLOT in 206 patients treated at 15 Italian centres.

In our study the primary endpoint was pCR, which was obtained in 7.3% of the overall population enrolled. Such result was lower than expected, considering the pCR rates of the FLOT regimen reported in FLOT4-AIO (16%), in NeoFLOT (20%) and in an observational small trial conducted by Homann et al. (17.4%) [6–9].

The pathological regression rate registered, however, was obtained in a non-favourably selected population with a more advanced clinical stage at the time of diagnosis. In fact, cT3–4 and cN positive stage in our study were reported in 87 and 85% respectively, while were 83 and 78% in the FLOT4-AIO trial. Moreover, the treatment exposure in our study was lower than expected. In particular, 39.8% of patients required dose reductions, less intensive regimens (e.g FOLFOX or single-agent 5-FU) or treatment discontinuation in the preoperative phase. Conversely, the rate of patients who required dose modification in the FLOT4-AIO study was roughly the half (19%) during preoperative phase [8, 9].

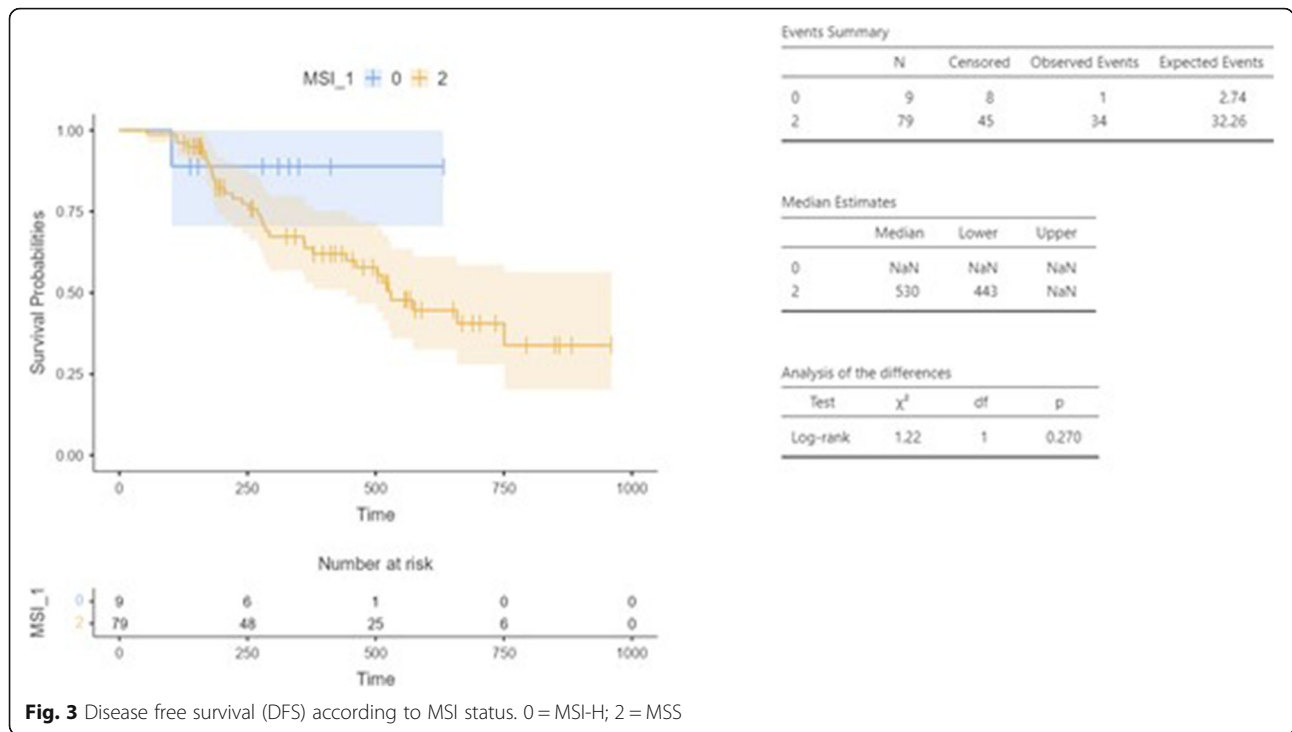
Pathological response has been reported to be different according to Lauren histotype [6–8]. Although Lauren histotype was assessed in diagnostic specimens only in 36% of patients, our data confirm a trend towards a lower pathological stage after CT for the intestinal subtype respect to diffuse one.

As previously reported [7, 8, 16, 17], we confirm pCR as a predictive parameter of survival. Although the survival data at the time of this analysis were still immature, DFS and OS were significantly longer ($p = 0.009$ and $p = 0.023$, respectively) in patients who achieved a pCR respect to other type of responses. In addition, in our study, ypT and ypN were significantly associated with



DFS ($p = 0.003$ and $p < 0.001$, respectively). This was consistent with the retrospective study of Schmidt et al. in which ypT and ypN were identified as independent prognostic factors on multivariate analysis [18].

Overall, 142 patients (68.9%) started a postoperative treatment including 105 patients (51%) who received the triplet. Notably, only 28 patients (13.6%) received FLOT for at least 4 full-dose cycles.



As expected, postoperative toxicities were significantly higher than preoperative ones, particularly for gastrointestinal G 3–4 AEs.

Although different approaches, including neoadjuvant CT and chemoradiotherapy (CTRT), have been studied in phase III trials, the best treatment strategy for resectable patients worldwide is still debated, in particular for GEJ subgroup [9, 19]. These real-word data corroborate

that in Italy, to date, perioperative FLOT is regarded as the treatment of choice in patients with ECOG PS 0–1, as demonstrated by the relevant accrual.

Safety profile was consistent with literature. Overall, neutropenia was the most commonly reported G 3–4 AE, affecting 41 patients out of 206 (19.9%) in the preoperative phase and 24 out of 142 (16.9%) in the postoperative phase. Notably, G-CSF were widely administered

Table 4 Univariate and multivariate analysis for DFS

Variable	UNIVARIATE		MULTIVARIATE	
	HR with 95% CI	p value	HR with 95% CI	p value
Pathological stage				
1	1.3 (0.12–14)	0.8500	0.48 (0.02–8.74)	0.616
2	7 (0.95–52)	0.0560	5.79 (0.43–78.08)	0.185
3	14 (1.9–100)	0.0093	30.36 (1.75–526)	0.019
4	30 (3.8–230)	0.0013	–	–
ypT1	2.6 (0.63–11)	0.1800	4.8 (0.72–32.05)	0.104
ypT2	3.6 (1.1–12)	0.0410	1.76 (0.36–8.68)	0.487
ypT3	5.6 (1.7–18)	0.0043	0.95 (0.20–4.37)	0.943
ypT4	4.7 (1.2–18)	0.0250	0.79 (0.15–4.19)	0.784
ypN1	1.9 (0.85–4.4)	0.1100	0.68 (0.23–2.03)	0.487
ypN2	3.3 (1.5–7.3)	3.2e-03	0.55 (0.16–1.89)	0.343
ypN3	4.8 (2.3–10)	4.6e-05	0.39 (0.09–1.54)	0.178
IntraOP MTS	3.9 (2–7.8)	7.6e-05	56.8 (3.5–906)	0.004
Postoperative CT	0.33 (0.2–0.54)	9.3e-06	0.32 (0.19–0.54)	2.3 e-05

Abbreviations: CT chemotherapy; IntraOP MTS intraoperative metastasis; ypN postoperative N stage after preoperative chemotherapy; ypT postoperative T stage after preoperative chemotherapy

Table 5 Univariate and multivariate analysis for OS

Variable	UNIVARIATE		MULTIVARIATE	
	HR with 95% CI	p value	HR with 95% CI	p value
ypN1	2.3 (0.77–6.7)	0.14	2.65 (0.88–8.02)	0.084
ypN2	2.8 (0.91–8.4)	0.07	3.19 (1.03–9.97)	0.044
ypN3	5.5 (2–15)	9.6e-4	4.95 (1.73–14.11)	0.003
IntraOP MTS	2.7 (1–7)	0.039	1.84 (0.68–4.96)	0.23
Postoperative CT	0.36 (0.19–0.67)	0.0014	0.35 (0.18–0.66)	0.0012

Abbreviations: CT chemotherapy; IntraOP MTS intraoperative metastasis; ypN postoperative N stage after preoperative chemotherapy

(69.0 and 58.4% of patients in the preoperative and postoperative phase, respectively) in order to maintain dose intensity and this could partly explain (together with schedule modifications) the lower incidence of G 3–4 neutropenia compared with FLOT4. In addition, no toxic death was observed and 30-day postoperative mortality rate was 1.0%.

Furthermore, FLOT regimen seems to be feasible and effective also in elderly patients. Among 89 patients (43%) aged 65 or older, the safety profile was similar to younger patients, although gastrointestinal and hematologic toxicities deserve a special attention in this population. In addition, the distribution of pathological stage and DFS did not differ according to age group.

Although the positive association between MSI-H and better prognosis in localized GC has been reported in several studies [20, 21], the evidence for MSI being a negative predictive factor of the efficacy of CT in neoadjuvant or adjuvant setting is not definitively confirmed [22, 23]. In addition, taxane-based regimens were not included in published meta-analysis by Pietrantonio et al. and the role of MSI status in patients treated with taxane-containing triplets is poorly explored in literature [21–24].

In Table 2 we detailed the characteristics of MSI-H patients subgroup treated with perioperative FLOT in our study, including the assessment of clinical response and we noticed that, consistently with literature, primary tumor location was predominantly stomach (89%) respect to GEJ (11%). Regarding to clinical response rate, ORR was 33% in this subgroup, inferior to those observed in entire population.

In our survival analysis, the MSI-H tumors had better DFS than MSS ones, confirming previous published data [24]. Although limited in sample size and with a still immature follow-up, our study supports the association of MSI status with survival parameters in a real-life setting. Therefore, MSI-H status is suggested to be a positive prognostic marker also in patients treated with a taxane-containing triplet (FLOT) in the perioperative setting. In this small subset of patients, considering the data yet published on the potential worst response to treatment respect to MSS group, the possibility of immediate

surgery instead of CT treatment could be considered [22]. However, it will be crucial to wait for ongoing analyses from prospective trials before definitely validating MSI as a predictor of the efficacy of systemic treatment with taxane-based CT.

Due to observational nature of study, there are obviously some limitations. The analysis of histological samples was not centrally assessed by a pathologist blinded to the clinicopathological characteristics. The pathological regression was assessed according to the Becker criteria only in 26.8% of patients. The low rate of histotype assessment on diagnostic biopsy precluded a precise estimate of the differences in pathological response. Finally, according to the observational nature of the study, there was a notable difference in the assessment of clinical stage, specifically for the use of endoscopic ultrasound, laparoscopy, and PET-FDG. In addition, MSI status was available in only 93 patients, and it was generally performed on surgical specimen after treatment, so we have no data about MSI status of patients who achieved a pCR.

Several clinical trials are currently evaluating perioperative FLOT in combination with other agents in order to improve pCR rate and survival outcomes. In a phase II trial (PETRARCA, NCT02581462) FLOT in combination with trastuzumab and pertuzumab was associated with high rates of PCR and node negativity in HER2-positive esophagogastric adenocarcinoma [25]. Additionally, the combination of FLOT with pembrolizumab is under investigation in the phase III KEYNOTE-585 trial (NCT03221426).

Conclusions

Although this study exhibits some limitations, Italian RealFLOT experience is the first large real-world analyses that confirmed that perioperative FLOT is feasible and safe in good PS patients with resectable GC or GEJ adenocarcinoma in clinical daily practice. The study also confirmed pCR as the most important predictive markers of survival. In addition, data suggests MSI-H status as a potential positive prognostic factor. Strategies to improve treatment exposure, particularly in the postoperative phase, are warranted.

Abbreviations

AE: Adverse event; CT: Chemotherapy; CRT: Chemoradiotherapy; DCF: Docetaxel, cisplatin, 5-fluorouracil; DCR: Disease control rate; DFS: Disease-free survival; ECF: Epirubicin, cisplatin, 5-fluorouracil; FLOT: Fluorouracil, leucovorin, oxaliplatin, and docetaxel; FOLFOX: Fluorouracil, leucovorin, and oxaliplatin; G: Grade; GC: Gastric cancer; GEJ: Gastro-oesophageal junction; G-CSF: Granulocyte-colony stimulating factor; HER2: Human epidermal growth factor receptor 2; MSI: Microsatellite instability; MSS: Microsatellite stable; ORR: Overall response rate; OS: Overall survival; pCR: Pathological complete response; PS: Performance status; MMR: MLH1, MSH2, MSH6 and PMS2

Supplementary Information

The online version contains supplementary material available at <https://doi.org/10.1186/s12885-021-08768-7>.

Additional file 1.**Acknowledgements**

Not applicable.

Authors' contributions

EG, DL, LA, SF contributed to the design of the study. All authors participated in the collection of clinical data and data analysis. EG, LA, DL, and SP contributed to the manuscript preparation. All authors performed treatment decisions and contributed to the interpretation of the clinical data. SP performed statistical analysis. All authors have read and approved the final manuscript.

Funding

No financial funding was received.

Availability of data and materials

All data generated or analyzed during this study are included in this published article.

Declarations**Ethics approval and consent to participate**

The authors confirm that the study was conducted in accordance with the Declaration of Helsinki and national and international ethical standards. The protocol was approved by Institutional review board of Azienda Ospedaliero-Universitaria Careggi (Comitato Etico Regionale for clinical experimentation of Toscana region – Italy - Area Vasta Centro - 12818_oss) and by the review boards of all participating 15 Italian centers. All patients provided written informed consent.

Consent for publication

Not applicable.

Competing interests

The authors declare that they have no competing interests.

Author details

¹Medical Oncology Unit, AOU Careggi, Florence, Italy. ²Division of Medical Oncology, Department of Precision Medicine, University of Study of Campania "L. Vanvitelli", Naples, Italy. ³Medical Oncology, Azienda Ospedaliero-Universitaria Pisana, Pisa, Italy. ⁴Medical Oncology Unit, Clinical Cancer Center, AUSL-IRCCS, Reggio Emilia, Italy. ⁵Medical Oncology, Fondazione Policlinico Universitario "A. Gemelli", IRCCS, Rome, Italy. ⁶Department of Medical Oncology, University of Turin, Turin, Italy. ⁷University Hospital of Modena, Modena, Italy. ⁸Medical Oncology Department, University Hospital, University of Cagliari, Cagliari, Italy. ⁹Oncology Unit - Dipartimento di Oncologia Clinica e Sperimentale Istituto Oncologico Veneto IOV-IRCCS, Padua, Italy. ¹⁰Medical Oncology, Usl Toscana Sud est, Arezzo, Italy. ¹¹Internal Medicine Department "Tor Vergata" University Hospital, Rome, Italy. ¹²Medical Oncology, Azienda Unità Sanitaria Locale-IRCCS di Reggio Emilia, Reggio Emilia, Italy. ¹³Medical Oncology Department, Fondazione IRCCS Istituto Nazionale dei Tumori, Milan, Italy. ¹⁴Medical Oncology,

Department Nuovo Ospedale-Santo Stefano Istituto Toscano Tumori, Prato, Italy. ¹⁵Department of Experimental and Clinical Medicine, University of Firenze, Florence, Italy. ¹⁶Clinical Oncology Unit, AOU Careggi, Largo Brambilla 3, 50134 Florence, Italy.

Received: 2 February 2021 Accepted: 26 July 2021

Published online: 08 October 2021

References

- Bray F, Ferlay J, Soerjomataram I, Siegel RL, Torre LA, Jemal A. Global cancer statistics 2018: GLOBOCAN estimates of incidence and mortality worldwide for 36 cancers in 185 countries. *CA Cancer J Clin.* 2018;68(6):394–424. <https://doi.org/10.3322/caac.21492>.
- Cunningham D, Allum WH, Stenning SP, Thompson JN, van de Velde CJH, Nicolson M, et al. Perioperative chemotherapy versus surgery alone for resectable gastroesophageal cancer. *N Engl J Med.* 2006;355(1):11–20. <https://doi.org/10.1056/NEJMoa055531>.
- Ychou M, Boige V, Pignon JP, Conroy T, Bouché O, Lebreton G, et al. Perioperative chemotherapy compared with surgery alone for resectable gastro-oesophageal adenocarcinoma: an FNCLCC and FFCD multicenter phase III trial. *J Clin Oncol.* 2011;29(13):1715–21. <https://doi.org/10.1200/JCO.2010.33.0597>.
- Van Cutsem E, Moiseyenko VM, Tjulandin S, et al. Phase III study of docetaxel and cisplatin plus fluorouracil compared with cisplatin and fluorouracil as first-line therapy for advanced gastric cancer: a report of the V325 study group. *J Clin Oncol.* 2006;24(31):4991–7. <https://doi.org/10.1200/JCO.2006.06.8429>.
- Al-Batran SE, Hartmann JT, Hofheinz R, et al. Biweekly fluorouracil, leucovorin, oxaliplatin, and docetaxel (FLOT) for patients with metastatic adenocarcinoma of the stomach or esophagogastric junction: a phase II trial of the Arbeitsgemeinschaft Internistische Onkologie. *Ann Oncol.* 2008; 19(11):1882–7. <https://doi.org/10.1093/annonc/mdn403>.
- Schulz C, Kullmann F, Kunzmann V, Fuchs M, Geissler M, Vehling-Kaiser U, et al. NeoFLOT: multicenter phase II study of perioperative chemotherapy in resectable adenocarcinoma of the gastroesophageal junction or gastric adenocarcinoma-very good response predominantly in patients with intestinal type tumors. *Int J Cancer.* 2015;137(3):678–85. <https://doi.org/10.1002/ijc.29403>.
- Homann N, Pauligk C, Luley K, Werner Kraus T, Bruch HP, Atmaca A, et al. Pathological complete remission in patients with oesophagogastric cancer receiving preoperative 5-fluorouracil, oxaliplatin and docetaxel. *Int J Cancer.* 2012;130(7):1706–13. <https://doi.org/10.1002/ijc.26180>.
- Al-Batran SE, Hofheinz RD, Pauligk C, et al. Histopathological regression after neoadjuvant docetaxel, oxaliplatin, fluorouracil, and leucovorin versus epirubicin, cisplatin, and fluorouracil or capecitabine in patients with resectable gastric or gastro-oesophageal junction adenocarcinoma (FLOT4-AIO): results from the phase 2 part of a multicentre, open-label, randomised phase 2/3 trial. *Lancet Oncol.* 2016;17(12):1697–708. [https://doi.org/10.1016/S1470-2045\(16\)30531-9](https://doi.org/10.1016/S1470-2045(16)30531-9).
- Al-Batran SE, Homann N2, Pauligk C, et al. perioperative chemotherapy with fluorouracil plus leucovorin, oxaliplatin, and docetaxel versus fluorouracil or capecitabine plus cisplatin and epirubicin for locally advanced, resectable gastric or gastro-oesophageal junction adenocarcinoma (FLOT4): a randomised, phase 2/3 trial. *Lancet.* 2019;393(10184):1948–57. [https://doi.org/10.1016/S0140-6736\(18\)32557-1](https://doi.org/10.1016/S0140-6736(18)32557-1).
- Edge SB, Byrd DR, Compton CC, et al. AJCC cancer staging manual. 7th ed. New York: Springer-Verlag; 2009. p. 117–26.
- Siewert JR, Stein HJ. Classification of adenocarcinoma of the oesophagogastric junction. *Br J Surg.* 1998;85(11):1457–9. <https://doi.org/10.1046/j.1365-2168.1998.00940.x>.
- Eisenhauer EA, Therasse P, Bogaerts J, Schwartz LH, Sargent D, Ford R, et al. New response evaluation criteria in solid tumours: revised RECIST guideline (version 1.1). *Eur J Cancer.* 2009;45(2):228–47. <https://doi.org/10.1016/j.ejca.2008.10.026>.
- Becker K, Mueller JD, Schulmacher C, Ott K, Fink U, Busch R, et al. Histomorphology and grading of regression in gastric carcinoma treated with neoadjuvant chemotherapy. *Cancer.* 2003;98(7):1521–30. <https://doi.org/10.1002/cncr.11660>.
- AIOM – SIAPEC/IAP – SIBIOC – SIF. Raccomandazioni 2020 sui Farmaci Agnostici. Sep 2020.

15. Amin MB, Greene FL, Edge SB, Compton CC, Gershewald JE, Brookland RK, et al. The eighth edition AJCC Cancer staging manual: continuing to build a bridge from a population-based to a more "personalized" approach to cancer staging. *CA Cancer J Clin.* 2017;67(2):93–9. <https://doi.org/10.3322/caac.21388>.
16. Becker K, Langer R, Reim D, Novotny A, Meyer zum Buschenfelde C, Engel J, et al. Significance of histopathological tumor regression after neoadjuvant chemotherapy in gastric adenocarcinomas: a summary of 480 cases. *Ann Surg.* 2011;253(5):934–9. <https://doi.org/10.1097/SLA.0b013e318216f449>.
17. Lorenzen S, Thuss-Patience P, Al-Batran SE, et al. Impact of pathologic complete response on disease-free survival in patients with esophagogastric adenocarcinoma receiving preoperative docetaxel-based chemotherapy. *Ann Oncol.* 2013;24(8):2068–73. <https://doi.org/10.1093/annonc/mdt141>.
18. Schmidt T, Sivic L, Blank S, Becker K, Weichert W, Bruckner T, et al. Prognostic value of histopathological regression in 850 neoadjuvantly treated oesophagogastric adenocarcinomas. *Br J Cancer.* 2014;110(7):1712–20. <https://doi.org/10.1038/bjc.2014.94>.
19. Shapiro J, van Lanschot JJB, Hulshof MCCM, van Hagen P, van Berge Henegouwen M, Wijnhoven BPL, et al. Neoadjuvant chemoradiotherapy plus surgery versus surgery alone for oesophageal or junctional cancer (CROSS): long-term results of a randomised controlled trial. *Lancet Oncol.* 2015;16(9):1090–8. [https://doi.org/10.1016/S1470-2045\(15\)00040-6](https://doi.org/10.1016/S1470-2045(15)00040-6).
20. Ratti M, Lampis A, Hahne JC, Passalacqua R, Valeri N. Microsatellite instability in gastric cancer: molecular bases, clinical perspectives, and new treatment approaches. *Cell Mol Life Sci.* 2018;75(22):4151–62. <https://doi.org/10.1007/s00018-018-2906-9>.
21. Pietrantonio F, Miceli R, Raimondi A, Kim YW, Kang WK, Langley RE, et al. Individual patient data Meta-analysis of the value of microsatellite instability as a biomarker in gastric Cancer. *J Clin Oncol.* 2019;37(35):3392–400. <https://doi.org/10.1200/JCO.19.01124>.
22. Lordick F. Chemotherapy for resectable microsatellite instability-high gastric cancer? *Lancet Oncol.* 2020;21(2):203. [https://doi.org/10.1016/S1470-2045\(20\)30012-7](https://doi.org/10.1016/S1470-2045(20)30012-7).
23. Smyth EC. Chemotherapy for resectable microsatellite instability-high gastric cancer? *Lancet Oncol.* 2020;21(2):204. [https://doi.org/10.1016/S1470-2045\(20\)30025-5](https://doi.org/10.1016/S1470-2045(20)30025-5).
24. Haag GM, Czink E, Ahadova A, Schmidt T, Sivic L, Blank S, et al. Prognostic significance of microsatellite-instability in gastric and gastroesophageal junction cancer patients undergoing neoadjuvant chemotherapy. *Int J Cancer.* 2019;144(7):1697–703. <https://doi.org/10.1002/ijc.32030>.
25. Al-Batran SE, Haag GM, Ettrich TJ, et al. 1421MO final results and subgroup analysis of the PETRARCA randomized phase II AIO trial: perioperative trastuzumab and pertuzumab in combination with FLOT versus FLOT alone for HER2 positive resectable esophagogastric adenocarcinoma. *Ann Oncol.* 2020;31:S899. <https://doi.org/10.1016/j.annonc.2020.08.1927>.

Publisher's Note

Springer Nature remains neutral with regard to jurisdictional claims in published maps and institutional affiliations.

Ready to submit your research? Choose BMC and benefit from:

- fast, convenient online submission
- thorough peer review by experienced researchers in your field
- rapid publication on acceptance
- support for research data, including large and complex data types
- gold Open Access which fosters wider collaboration and increased citations
- maximum visibility for your research: over 100M website views per year

At BMC, research is always in progress.

Learn more biomedcentral.com/submissions

