

AperTO - Archivio Istituzionale Open Access dell'Università di Torino

Associations of Maternal Educational Level, Proximity to Greenspace During Pregnancy, and Gestational Diabetes With Body Mass Index From Infancy to Early Adulthood: A Proof-of-Concept Federated Analysis in 18 Birth Cohorts

This is the author's manuscript

Original Citation:

Availability:

This version is available <http://hdl.handle.net/2318/1946238> since 2023-12-06T08:32:14Z

Published version:

DOI:10.1093/aje/kwad206

Terms of use:

Open Access

Anyone can freely access the full text of works made available as "Open Access". Works made available under a Creative Commons license can be used according to the terms and conditions of said license. Use of all other works requires consent of the right holder (author or publisher) if not exempted from copyright protection by the applicable law.

(Article begins on next page)

Title: Associations of Maternal Educational Level, Proximity to Greenspace During Pregnancy, and Gestational Diabetes With Body Mass Index From Infancy to Early Adulthood: A Proof-of-Concept Federated Analysis in 18 Birth Cohorts

Authors: Tim Cadman, Ahmed Elhakeem, Johan Lerbech Vinther, Demetris Avraam, Paula Carrasco, Lucinda Calas, Marloes Cardol, Marie-Aline Charles, Eva Corpeleijn, Sarah Crozier, Montserrat de Castro, Marisa Estarlich, Amanda Fernandes, Serena Fossatti, Dariusz Gruszczyński, Kathrin Gurlich, Veit Grote, Sido Haakma, Jennifer R. Harris, Barbara Heude, Rae-Chi Huang, Jesús Ibarluzea, Hazel Inskip, Vincent Jaddoe, Berthold Koletzko, Veronica Luque, Yannis Manios, Giovenale Moirano, George Moschonis, Johanna Nader, Mark Nieuwenhuijsen, Anne-Marie Nybo Andersen, Rosie McEachen, Angela Pinot de Moira, Maja Popovic, Theano Roumeliotaki, Theodosia Salika, Loreto Santa Marina, Susana Santos, Sylvain Serbert, Evangelia Tzorovili, Marina Vafeiadi, Elvira Verduci, Martine Vrijheid, TGM Vrijkotte, Marieke Welten, John Wright, Tiffany C Yang, Daniela Zugna, Deborah Lawlor

Correspondence Address: Section of Epidemiology, Øster Farimagsgade 5, DK-1353 Copenhagen K, Denmark.

© The Author(s) 2023. Published by Oxford University Press on behalf of the Johns Hopkins Bloomberg School of Public Health. This is an Open Access article distributed under the terms of the Creative Commons Attribution License (<http://creativecommons.org/licenses/by/4.0>), which permits unrestricted reuse, distribution, and reproduction in any medium, provided the original work is properly cited.

Affiliations: MRC Integrative Epidemiology Unit, University of Bristol, UK (Tim Cadman, Ahmed Elhakeem, Deborah A. Lawlor); Section of Epidemiology, Department of Public Health, University of Copenhagen, Copenhagen, Denmark (Tim Cadman, Johan Lerbech Vinther, Anne-Marie Nybo Andersen, Angela Pinot de Moira); Espi Department of Medicine, Universitat Jaume I, Castellón, Spain (Paula Carrasco); Joint Research Unit in Epidemiology, Environment and Health FISABIO-University of Valencia - Universitat Jaume I, Valencia, Spain (Paula Carrasco); Université Paris Cité, Inserm, INRAE, Centre of Research in Epidemiology and StatisticS (CRESS), F-75004 Paris, France (Lucinda Calas, Sandrine Lioret, Barbara Heude); Department of Epidemiology, University of Groningen, University Medical Center Groningen, Groningen, The Netherlands (Marloes Cardol, Eva Corpeleijn); Joint unit Elfe, Ined, Inserm, EFS, Aubervilliers, France. (Marie-Aline Charles); MRC Lifecourse Epidemiology Centre, University of Southampton, Southampton General Hospital Southampton, SO16 6YD UK (Sarah Crozier, Hazel Inskip, Theodosia Salika); ISGlobal, Barcelona, Spain (Montserrat de Castro, Amanda Fernandes, Serena Fossatti, Mark Nieuwenhuijsen, Martine Vrijheid); Universitat Pompeu Fabra (UPF), Barcelona, Spain. (Montserrat de Castro, Amanda Fernandes, Serena Fossatti, Mark Nieuwenhuijsen, Martine Vrijheid); Spanish Consortium for Research on Epidemiology and Public Health (CIBERESP), Madrid, Spain (Montserrat de Castro, Marisa Estarlich, Amanda Fernandes, Serena Fossatti, Jesús Ibarluzea, Mark Nieuwenhuijsen, Loreto Santa Marina, Martine Vrijheid); Neonatal Dept., Children's Memorial Health Institute, Warsaw, Poland. (Dariusz Gruszczyński); Division of Metabolic and Nutritional Medicine, Department of Pediatrics, Dr. von Hauner Children's Hospital, University Hospital, LMU Munich, Germany (Kathrin Guerlich, Veit Grote, Berthold Koletzko); UMCG Genetics Department, University Medical Centre Groningen, Genetics Department (GCC - Genomic Coordination Centre), Groningen, The Netherlands (Sido Haakma); Centre for Fertility and Health, Norwegian Institute of Public Health, Oslo, Norway (Jennifer R. Harris); Nutrition & Health Innovation Research Institute, Edith Cowan University, Australia (Rae-Chi Huang);

University of the Basque Country (UPV/EHU) (Jesús Ibarluzea); Biodonostia, Environmental Epidemiology and Child Development Group; Ministry of Health of Basque Government, Sub-directorate of Public Health of Gipuzkoa, Spain. (Jesús Ibarluzea, Loreto Santa Marina); Department of Pediatrics, Erasmus MC, University Medical Center Rotterdam, The Netherlands (Vincent Jaddoe, Susana Santos, Marieke Welten); Generation R Study Group, Erasmus MC, University Medical Center Rotterdam, PO Box 2040, 3000 CA, Rotterdam, The Netherlands. (Vincent Jaddoe, Susana Santos, Marieke Welten); Universitat Rovira i Virgili, Pediatric Nutrition and Development Research Unit, Serra Hunter Fellow, IISPV. (Veronica Luque); Department of Nutrition and Dietetics, School of Health Science and Education, Harokopio University, Athens, Greece (Yannis Manios); Institute of Agri-food and Life Sciences, Hellenic Mediterranean University Research Centre, Heraklion, Greece (Yannis Manios); Cancer Epidemiology Unit, Department of Medical Sciences, University of Turin, Italy (Giovenale Moirano, Maja Popovic, Daniela Zugna); Department of Food, Nutrition and Dietetics, School of Allied Health, Human Services and Sport, La Trobe University, Australia (George Moschonis); Department of Genetics and Bioinformatics, Division of Health Data and Digitalisation, Norwegian Institute of Public Health, Oslo, Norway (Johanna Nader); Bradford Institute for Health Research, Bradford Teaching Hospitals NHS Foundation Trust, Bradford, UK (Rosemary McEachan, John Wright, Tiffany C Yang); Department of Social Medicine, University of Crete, Greece (Theano Roumeliotaki, Marina Vafeiadi); Research Unit of Population Health; faculty of Medicine, University of Oulu, Oulu, Finland (Sylvain Serbert); Pragmatic Clinical Trials Unit, Centre for Evaluation and Methods, Wolfson Institute of Population Health, Queen Mary University of London, London, UK (Evangelia Tzorovili); Department of Nutrition and Dietetics, School of Health Science and Education, Harokopio University, Athens, Greece (Evangelia Tzorovili); Department of Pediatrics Ospedale dei Bambini Vittore Buzzi di Milano, Università degli Studi di Milano, Italy (Elvira Verduci); Department of Public and Occupational Health, Amsterdam

Public Health Research Institute, Amsterdam Reproduction & Development Research Institute, Amsterdam UMC, University of Amsterdam, the Netherlands (Tanja Vrijkotte)

Funding: This work was funded by the European Union's Horizon 2020 research and innovation programme (Grant Agreement No. 733206 LifeCycle). TC received funding from the European Union's Horizon 2020 research and innovation programme under grant agreement N: 733206 LIFE-CYCLE project & Horizon 2020 Marie Skłodowska–Curie Individual Fellowship N. 120616 URBINEX project. VJ received funding from a Consolidator Grant from the European Research Council (ERC-2014-CoG-648916). KG received funding from the European Union's Horizon 2020 research and innovation programme under grant agreement Nr: 733206, LIFE-CYCLE project. APM is funded by a Lundbeck Foundation fellowship (R264-2017-3099). BK is the Else Kröner Seniorprofessor of Paediatrics at LMU – University of Munich, financially supported by Else Kröner-Fresenius-Foundation, LMU Medical Faculty and LMU University Hospitals. RM, TY and JW receive funding from the National Institute for Health Research under its Applied Research Collaboration Yorkshire and Humber [NIHR200166]. JRH is supported, in part, by The Research Council of Norway through its Centres of Excellence funding scheme, project nr. 262700. HI was supported by the UK Medical Research Council, the UK National Institute for Health Research, and the European Union's Horizon 2020 research and innovation programme under grant agreement N: 733206, LIFE-CYCLE project during the conduct of this research. Funding details for each cohort are provided in Web Appendix 1.

Data Availability Statement: Data is available on application from the individual cohorts. Code used in analysis is freely available at <https://github.com/lifecycle-project/wp4-bmi-poc>. The analysis plan can be viewed at <https://osf.io/58vau/>

Thanks: N/A

Conference presentation: N/A

Preprint Information: medRxiv 2022.07.27.22278068; doi:

<https://doi.org/10.1101/2022.07.27.22278068>

Disclaimer: N/A

Conflict of Interest: N/A

Running Head: Early life exposures BMI

Key words: BMI, maternal education, green spaces, gestational diabetes, cohort data sharing, federated analyses

Abbreviations: BMI, body mass index; EU, European Union; EU CN, EU Child Cohort Network

ORIGINAL UNEDITED MANUSCRIPT

Abstract

International sharing of cohort data for research is important and challenging. We explored the feasibility of multi-cohort federated analyses by examining associations between three pregnancy exposures (maternal education, exposure to green vegetation and gestational diabetes) with offspring BMI from infancy to 17 years. We used data from 18 cohorts (n=206,180 mother-child pairs) from the EU Child Cohort Network and derived BMI at ages 0-1, 2-3, 4-7, 8-13 and 14-17 years. Associations were estimated using linear regression via one-stage IPD meta-analysis using DataSHIELD. Associations between lower maternal education and higher child BMI emerged from age 4 and increased with age (difference in BMI z-score comparing low with high education age 2-3 years = 0.03 [95% CI 0.00, 0.05], 4-7 years = 0.16 [95% CI 0.14, 0.17], 8-13 years = 0.24 [95% CI 0.22, 0.26]). Gestational diabetes was positively associated with BMI from 8 years (BMI z-score difference = 0.18 [CI 0.12, 0.25]) but not at younger ages; however associations attenuated towards the null when restricted to cohorts which measured GDM via universal screening. Exposure to green vegetation was weakly associated with higher BMI up to age one but not at older ages. Opportunities of cross-cohort federated analyses are discussed.

Introduction

Prospective cohort studies contribute to important research questions, but they are resource intensive. Over recent decades, international funders and cohort data custodians have emphasised the importance of data sharing [1-4]. This provides economic efficiency, enables replication and triangulation of findings across different studies, increases the period of the life course that can be studied for repeated measures, and increases statistical power particularly for rare outcomes.

To meet this challenge, the EU Child Cohort Network (EUCN) has been created to address key research questions about the associations of early life stressors with health from infancy to adulthood [5, 6]. The EUCN is an open and sustainable network of 17 birth cohorts across 12 countries in Europe and Australia comprising more than 250,000 participants. In addition to increasing power and supporting replication, this network contains extensive repeated-measured data and thus enables researchers to explore how associations might differ across the life course.

The aim of this paper is to use the EUCN to explore the feasibility of multi-cohort federated analyses ('federated' describes the analysis of multiple datasets) by examining associations between different pregnancy exposures and offspring BMI from infancy to 17 years. BMI was chosen as a suitable outcome for this proof-of-concept study as reducing childhood overweight and obesity is a major global public health challenge and it is hypothesised that higher BMI starts to be 'programmed' in intrauterine and early infancy [7, 8]. Furthermore, as weight and height are often measured at repeated time points it provides an opportunity to investigate potential changes in exposure-BMI associations at different ages across the life course.

We chose three pregnancy exposures which were hypothesised to influence offspring BMI and that would be useful to illustrate different challenges in federated analyses (e.g. harmonisation and missingness): (i) maternal education, (ii) exposure to green vegetation and (iii) gestational diabetes (GDM). We chose maternal education as an example of a categorical variable with low levels of missing data in EUCN for which there is extensive previous research on associations with BMI. We chose exposure to green vegetation as a continuous, area-based variable, with high levels of missing data because of some cohorts in EUCN not having geographic data. Finally, we chose GDM as a categorical variable harmonised from diverse sources of information (e.g. retrospective self-report, health record extraction and diagnosis made on the basis of results from blood samples). The exposures are briefly summarised below.

Maternal education. Socioeconomic position (SEP) is a complex exposure encompassing several different domains of family resources with maternal education at birth a commonly used indicator. Lower maternal education birth is associated with higher child BMI in medium and high-income countries [9-14]. SEP likely influences childhood BMI through exposure to an obesogenic environment [15-17]. Whilst studies have consistently found lower family SEP to be associated with higher child BMI, evidence regarding the age at which these inequalities emerge and the course they take is not consistent. [9-13, 18, 19].

Residential Proximity to green space. Maternal availability of green spaces could influence offspring BMI via increased physical activity during pregnancy, stress reduction or reduced exposure to pollution [20, 21]. Some studies have reported that higher postnatal exposure to green spaces is associated with lower BMI, but evidence is not conclusive [22-24]. Whilst

increased prenatal exposure to green spaces has been consistently associated with higher birth weight [25, 26], little is known about associations with BMI at older ages [27].

Gestational Diabetes Mellitus (GDM, defined as hyperglycaemia in pregnancy) [28] is robustly associated with higher mean birth weight and large for gestational age [29-32]. Higher birth weight is in turn associated with higher future offspring BMI, fat mass and lean mass [33, 34] thus it has been proposed that intrauterine fetal overgrowth related to higher maternal circulating glucose may result in lifelong higher offspring BMI [35, 36]. However, few studies have explored whether any association of GDM with offspring BMI changes as the offspring age. This is important as a lasting effect into older age and/or an increasing effect across both childhood and adulthood might lead to higher risk of adverse adult cardiometabolic outcomes than association limited only to childhood [37].

The aims of this study therefore were to explore the feasibility of multi-cohort federated analyses by examining associations between three pregnancy exposures (maternal education, green spaces and GDM) and BMI measured at 5 age periods across childhood. We hypothesised that those whose parents had lower educational attainment, and those exposed in-utero to maternal gestational diabetes would have higher BMI. As evidence for the association of maternal gestational access to green space and offspring BMI is limited we had no specific hypothesis for the association.

Methods

Inclusion criteria and participating cohorts

Pregnancy and birth cohort studies from the ECCN were eligible to participate if they (i) had information on at least one of the four exposures and BMI measured at a minimum of one

time point, (ii) the study was approved by their institutional review boards, and (iii) the infrastructure for federated analysis was established. Further details of each cohort can be found in Jaddoe et al. [5] and each cohort's profile paper. All 17 core cohorts were invited, plus two additional cohorts from the wider LifeCycle network which had harmonised data available (The Amsterdam Born Children and their Development cohort, ABCD [38] and The Healthy Growth Study, HGS) [39]. Of these 19 studies, 18 were able to participate (the Helsinki Birth Cohort Study was unable to participate as they had not implemented the required infrastructure; Table 1). The analysis sample thus consisted of these 18 cohorts with a maximum sample size of $n = 206,180$ (Figure 1). All participants gave written informed consent and ethical approval was granted by local ethics boards (Web Appendix 2). The analysis plan can be viewed at <https://osf.io/58vau/>.

Exposures

Maternal education at birth

A harmonised maternal education variable was created in each cohort based on the International Standard Classification of Education 97 (ISCED-97) and consisted of three categories: Low (No education to lower secondary; ISCED-97 categories 0-2), Medium (Upper and post-secondary; ISCED-97 categories 3-4), High (Degree and above; ISCED-97 categories 5-6) [40]. Data was available in all cohorts.

Green spaces

Exposure to green space during pregnancy was captured using Normalized Difference Vegetation Index (NDVI) within a 300m buffer from the residential address using Geographic Information System approaches previously described [41]. NDVI (range 0-1) quantifies vegetation by measuring the difference between near-infrared and red-light

reflection based on satellite imagery. Extremely low values (0 - 0.1) indicate areas of barren rock, sand or snow; moderate values (0.2 - 0.5) indicate sparse vegetation such as shrubs and grasslands, whilst high values (0.6 - 1) indicate dense vegetation [42]. Data was available for nine cohorts (ALSPAC, BiB, DNBC; EDEN; GEN R; INMA; MoBa, NINFEA, Rhea).

Gestational diabetes

A binary variable indicating the presence or absence of evidence for GDM was harmonised for each cohort based either on extraction from clinical records or maternal self-report (Web Table 1). Data was available for all cohorts except HGS, NFBC66 and NFBC86. For most of the included cohorts at the time of pregnancy no universal diagnostic test was used, meaning that selective misclassification of some women with GDM being treated as 'healthy', particularly if they had no clear risk factors for GDM, is possible. To test this, we performed a sensitivity analysis only in those studies in which all women in the sample had a blood measure of hyperglycaemia, including HbA1c, fasting or random glucose, oral glucose challenge or tolerance test (BiB & Eden).

Outcome

The outcome was offspring BMI z-scores based on either clinic or parental reported height and weight measurements (Web Table 2). Sex-and-age specific z-scores were calculated per month for BMI using external WHO standards [43] and references [44] excluding observations ± 5 standard deviations from the population median. Separate BMI z-scores were calculated for five age periods defined *a priori*: (i) 0 to 1 years, (ii) 2 to 3 years, (iii) 4 to 7 years, (iv) 8 to 13 years, (v) 14 to 17 years. These represent key developmental periods of change (early infancy, pre-school, adiposity rebound, puberty and late adolescence). Only one measurement per child was included within each period; therefore if children had more

than one measurement within an age bracket we used the earliest. A summary of the number of observations provided by each child is provided in Web Table 3.

Confounders

We defined confounders as any factor that plausibly causes the exposure and offspring BMI, and used Directed Acyclic Graphs (DAGs) to depict these and determine whether there was any evidence of colliders that we should not adjust for (Web Figure 1). All confounders were assessed via self-report except pre-pregnancy BMI which was based on either self-report or clinical measurements of weight and height. For analyses of maternal education with offspring BMI no confounders were included as we did not identify plausible causes of variation in both maternal education and offspring BMI. For analyses with NDVI as exposure we adjusted for maternal education, area deprivation and parity. For analyses with GDM as the exposure we adjusted for maternal education, maternal age at birth (years), maternal pre-pregnancy BMI (kg/m^2), parity (nulliparous, multiparous) and maternal smoking during pregnancy (yes/no). In addition, all analyses were adjusted for cohort, child sex and age at weight and height measurements (months) to improve statistical precision. All cohorts had some available data on the above confounders. Maternal ethnicity also fit our definition of a confounder for all exposures but was only available (defined as Western vs other) in 8 of the 17 cohorts (ABCD, ALSPAC, BiB, ELFE, GECKO, GEN-R, INMA & Raine; maximum $N = 45,601$ representing 22% of the 206,180 participants). In a sensitivity analyses we repeated all analyses in this subset of cohorts with additional adjustment for ethnicity.

Federated analyses using DataSHIELD

All analyses were performed using DataSHIELD version 6.1.0 and R version 3.5.2 [45].

Briefly, each participating cohort stored their harmonised data on a local server protected by

a firewall. Researchers granted permission to access the data use DataSHIELD to conduct remote analysis of individual participant data. DataSHIELD provides data security by preventing researchers viewing, copying or transferring any data. Instead, analysis commands are performed on each server and only non-disclosive summary statistics returned to the researcher.

The functionality available within DataSHIELD is continually being developed, however at the time of writing mixed effects models were not available. Therefore, associations between each exposure and BMI at each age period were tested using linear regression and one-stage Individual Participant Data (IPD) meta-analysis. For each exposure we fit five separate regression models where the outcome was child BMI z-score calculated within each age period as described above. All regression models included a dummy variable for cohort and were adjusted for confounders as described above. To explore potential selection bias (due to each cohort contributing different data at different ages), we repeated all analyses restricting the sample to the subgroup of participants with data at the oldest age. We also repeated analyses using two-stage IPD random effects meta-analysis to describe estimates within each cohort and explore between-cohort heterogeneity. We also assessed the influence of two large cohorts (DNBC & MoBa) by repeating analyses with these cohorts excluded.

Missing data

The analysis sample consisted of participants with available data on at least one exposure and BMI in at least one outcome period. There were minimal differences between participants in the analysis sample and those excluded, except included participants were of slightly lower education and had lower rates of smoking in pregnancy (Web Table 4). Multiple imputation was also not available within DataSHIELD, therefore missing data were handled through

complete case analysis, with the percentage of participants who were complete cases ranging from 6% to 65% of eligible participants from all cohorts combined; the proportion with complete data decreased with increasing age (Web Table 5). In addition to attrition across all cohorts, one reason for the low percentage of complete cases in the oldest age bracket was that for one of the largest cohorts (DNBC) only a small percentage of children had reached this age at the time of analysis. Estimates from linear regression models using complete cases are unbiased if the chance of being missing is not associated with the outcome after adjusting for covariates [46]. To explore this assumption, for each exposure-outcome analysis we derived a variable indicating whether each participant had complete data. We then regressed this variable on child BMI adjusting for non-missing covariates (Web Figure 2). For all exposures, associations between BMI at all ages and the chance of having complete data were close to null.

Results

Participants' characteristics

The number of participants included in analyses ranged from 206,180 (maternal education and BMI ages 0-1) to 7,096 (NDVI & BMI at ages 14-17). There were large differences between cohorts in the education level of mothers, with MoBa and NINFEA containing mostly highly educated mothers whilst BiB, NFBC66 and Raine contained mothers with lowest levels of education (Figure 2a). INMA, NINFEA and Rhea had the lowest values for NDVI indicating exposure to lower levels of vegetation (Figure 2b). There was marked heterogeneity between cohorts in estimated rates of GDM (e.g. Gen-R = 0.8%, NINFEA = 8.1%; Figure 2c). Cohort-specific information on covariates and child BMI, height, weight and age at measurement are shown in Web Tables 6-10.

Associations between pregnancy exposures and child BMI

Figures 3-5 show associations between each exposure and BMI z-scores within each age period. At ages 0-1 and 2-3 years associations between maternal education and BMI were close to null; however, at older ages a consistent pattern emerged with lower maternal education associated with higher childhood BMI (Figure 3). There was some evidence of a linear relationship as the magnitude of the association increased across categories of maternal education. Associations at earlier ages were slightly weaker when restricting analyses to the subgroup of participants with data at the oldest age. Results were similar using 2-stage IPD (Web Figures 3a & 3b), and whilst there was considerable heterogeneity between cohorts (I^2 range 0-92%) the direction of association was largely consistent.

At ages 0-1 higher NDVI in pregnancy was associated with slightly higher BMI, however at older ages associations were close to null (Figure 4). Repeating analyses using 2-stage IPD showed considerable heterogeneity between cohorts (I^2 range 0-66%): for example at age 2-3 higher NDVI was associated with higher BMI in BiB but lower BMI in Rhea (Web Figure 4).

Between ages 0-7 associations between GDM and childhood BMI was close to null; however at ages 8-13 GDM was associated with higher BMI (Figure 5). Associations at all ages, except 0-1, were stronger when restricting to the subgroup of participants with data at the oldest age. These results were replicated using 2-stage IPD with 10 out of 13 cohorts showing a positive association at ages 8-13 ($I^2 = 0 - 78\%$; Web Figure 5). At ages 14-17 associations attenuated towards null, however within this age period only three cohorts had available data.

Sensitivity and subgroup analyses

To test for potential confounding by indication, we repeated analyses for GDM comparing cohorts where assessment was via a universal blood-based glucose test vs self-report or non-universal test, and found estimates to be lower for the two cohorts that used a universal blood-based test (Web Table 11). We additionally adjusted for ethnicity in the subset of up to 45,601 participants with available data, which attenuated associations of maternal education towards the null (Web Table 12). Finally we repeated analyses removing the two largest cohorts (DNBC and MoBa; Web Table 13), however this did not change the direction of any associations or markedly change their magnitude.

Discussion

In this IPD meta-analysis of 18 cohort studies with a maximum sample of 206,180 children we explored the feasibility and utility of multi-cohort federated analysis by examining associations between key pregnancy exposures and BMI across childhood. We found consistent evidence that lower maternal education was associated with increased childhood BMI. Replicating and extending previous research [10-13, 18], we found this association to emerge from ages 4-7 and increase in magnitude with age. Consistent with previous studies showing a positive association between exposure to green vegetation and birthweight [26, 27, 48, 49], we found that higher NDVI was associated with slightly higher BMI in the first year of life; although associations at older ages were close to null. We also found evidence that GDM was associated with higher child BMI at ages 8-13 but not at younger ages.

Opportunities and challenges of federated data analysis

Data harmonisation

In the EU Child Cohort Network[5], we were interested in average associations across studies that were largely from different European countries, with a small number of studies from

other high-income countries (e.g. Australia). As such a substantial effort was made to harmonise data across all contributing studies [5, 6]. Data harmonisation is also commonly undertaken in non-federated analyses, therefore the opportunities and challenges discussed herein will have relevance to other analysis attempting to estimate average associations across studies using consistent data.

Individual participant pooling of studies (whether federated or not) provides the opportunity to increase statistical power and obtain more precise estimates than any single cohort, and to explore robustness of associations by examining consistency (replication) across independent populations. However, harmonisation of data assessed in different ways and to different levels of detail can result in between study heterogeneity that could complicate interpretation of results. For example, if different studies have used different methods for a binary variable, there may be different levels of misclassification between studies that are disguised by the harmonised binary variable.

As noted in the methods and results above, this was a concern for the harmonised GDM variable. For most studies this was assessed via self-report, in populations where policy dictated diagnostic tests were only done in those with risk factors at the first antenatal clinic visit, which could introduce confounding by indication. To explore this, we undertook a sensitivity analysis comparing pooled results from the two studies that had diagnosed GDM in all women using a blood-based measure of circulating glucose to those from remaining studies. The finding of a weaker association in those with the universal blood test suggests that our concerns regarding confounding by indication may be valid. Whilst the harmonised binary variable can contain all data from all of the studies, we would recommend that other

pooled individual participant studies undertake similar subgroup analyses where different methods have been used to assess a harmonised variable.

A further challenge with data harmonisation is the loss of information through having to harmonise to the study with least detail for each measure, which could increase the risk of residual confounding. For example, in the present study maternal education was harmonised into three categories from the more granular detail available within many of the cohorts, and similarly maternal smoking in pregnancy was harmonised to yes versus no, when several studies had more detailed measures on amount and timing of smoking (e.g. if a women had smoked periconceptually and quit before pregnancy). Thus, the associations of GMD with offspring BMI might be influenced by residual confounding due to this 'lowest common denominator'. SEP might be expected to confound away from the null, but as smoking results in lower BMI [47], it might mask an association (confound towards the null). As there are many different measures across the studies for both maternal education and smoking, to explore the possible effect of this in subgroups would result in groups with small numbers for which robustly identifying between subgroup heterogeneity would be difficult and counter one of the key benefits of larger sample sizes.

Available analytic methods

A key opportunity of federated analysis is the ability to analyse data from multiple cohorts without the need for data transfer. This minimises the administrative burden of data transfer agreements and governance issues related to physical data sharing. In contrast to the traditional approach (where researchers from separate institutions run analyses which are then meta-analysed by a central group), the federated approach is more time efficient and flexible as one researcher can perform all analyses and combine results. However, a limitation with

DataSHIELD is that only a small subset of R packages are available so far, as any new packages need to be integrated and tested to ensure that disclosure risk is minimised.

Whilst many R packages are now implemented in DataSHIELD (e.g. Metafor) [48], at the time of analysis two methods were not available: multiple imputation and mixed effects models. In the absence of multiple imputation we used complete case analysis which in some scenarios carries the risk of bias [47]. To explore potential selection bias due to attrition and cohorts differentially contributing data to different analyses, we repeated analyses restricting to the subgroup of participants with data at the oldest age period. For analyses with maternal education as the exposure we found lower estimates in this subgroup at earlier ages which may suggest potential selection bias with results at the older age being underestimated. By contrast, for analyses with gestational diabetes as the exposures we found stronger estimates at earlier ages suggesting that estimates at older ages may be overestimated. Where complete case analysis is used, we therefore suggest that at minimum authors fully describe missing data, consider its likely mechanisms and explore the potential for bias where possible.

The unavailability of mixed effects models meant that we were not able to explore associations with change in BMI as offspring aged in a way that accounted for correlation between repeat measures. Mixed effects models would also have enabled us to use all available data from participants with at least one measure of BMI, under a missing at random assumption [49, 50]. Notwithstanding, our results for example with maternal education are broadly similar to models which did use trajectory analysis, i.e. showing widening inequalities [12]. DataSHIELD is a continually evolving project, and the implementation of other new methods is underway.

Summary & future implications

In this multicohort study with 18 cohorts and up to 206,180 participants we have illustrated potential scientific gains of collaboration and data sharing between international birth cohorts. We have demonstrated how federated analysis using DataShield with cohorts from the ECCN provides opportunities to tackle research questions with increased statistical power and the ability to explore consistency (replication) across independent studies without the need to share data. We acknowledge and demonstrate the possibility of bias and residual confounding resulting from harmonising data across multiple cohorts and the limitations that result from federated data platforms, i.e. not having more advanced data analysis methods. Whilst we have focused here on DataShield, we expect that other federated analysis platforms will similarly focus on straightforward descriptive and generalised regression models as more advanced methods are added to the platform.

ORIGINAL UNEDITED MANUSCRIPT

References

1. Pilat D, Fukasaku Y. OECD principles and guidelines for access to research data from public funding. *Data Science Journal* 2007.
2. Medical Research Council. Guidance on sharing of research data from population and patient studies. Wiltshire, United Kingdom: Medical Research Council; 2011.
3. National Institutes of Health. *Data management & sharing policy overview, 2023*.
4. Social Sciences and Humanities Research Council. Research Data Archiving Policy. 2016. https://www.sshrc-crsh.gc.ca/about-au_sujet/policies-politiques/statements-enonces/edata-donnees_electroniques-eng.aspx. Accessed 10th May 2022.
5. Jaddoe VWV, Felix JF, Andersen A-MN, et al. The LifeCycle Project-EU Child Cohort Network: a federated analysis infrastructure and harmonized data of more than 250,000 children and parents. *European Journal of Epidemiology*. 2020;35(7):709-24. doi:10.1007/s10654-020-00662-z
6. Pinot de Moira A, Haakma S, Strandberg-Larsen K, et al. The EU Child Cohort Network's core data: establishing a set of findable, accessible, interoperable and re-usable (FAIR) variables. *European Journal of Epidemiology*. 2021;36(5):565-80. doi:10.1007/s10654-021-00733-9
7. Dodd JM, Turnbull D, McPhee AJ, et al. Antenatal lifestyle advice for women who are overweight or obese: LIMIT randomised trial. *BMJ*. 2014;348:g1285. doi:10.1136/bmj.g1285
bmj.g1285 [pii]
8. Koletzko B, Godfrey KM, Poston L, et al. Nutrition during pregnancy, lactation, and early childhood and its implications for maternal and long-term child health: the EarlyNutrition Project recommendations. *Ann Nutr Metab*. 2019;74:93–106. doi:0.1159/000496471

9. Bramsved R, Regber S, Novak D, Mehlig K, Lissner L, Marild S. Parental education and family income affect birthweight, early longitudinal growth and body mass index development differently. *Acta paediatrica* (Oslo, Norway : 1992). 2018;107(11):1946-52. doi:10.1111/apa.14215
10. Ballon M, Botton J, Charles MA, et al. Socioeconomic inequalities in weight, height and body mass index from birth to 5 years. *International Journal of Obesity*. 2018;42(9):1671-9. doi:10.1038/s41366-018-0180-4
11. Morgen CS, Andersen PK, Mortensen LH, et al. Socioeconomic disparities in birth weight and body mass index during infancy through age 7 years: a study within the Danish National Birth Cohort. *BMJ Open*. 2017;7(1):e011781. doi:10.1136/bmjopen-2016-011781
12. Howe LD, Tilling K, Galobardes B, Smith GD, Ness AR, Lawlor DA. Socioeconomic disparities in trajectories of adiposity across childhood. *Int J Pediatr Obes*. 2011;6(2-2):e144-53. doi:10.3109/17477166.2010.500387
13. Bouthoorn SH, Wijtzes AI, Jaddoe VW, Hofman A, Raat H, van Lenthe FJ. Development of socioeconomic inequalities in obesity among Dutch pre-school and school-aged children. *Obesity (Silver Spring)*. 2014;22(10):2230-7. doi:10.1002/oby.20843
14. Langnäse K, Mast M, Danielzik S, Spethmann C, Müller MJ. Socioeconomic gradients in body weight of German children reverse direction between the ages of 2 and 6 years. *J Nutr*. 2003;133(3):789-96. doi:10.1093/jn/133.3.789
15. Janssen I, Boyce WF, Simpson K, Pickett W. Influence of individual- and area-level measures of socioeconomic status on obesity, unhealthy eating, and physical inactivity in Canadian adolescents. *Am J Clin Nutr*. 2006;83(1):139-45. doi:10.1093/ajcn/83.1.139

16. Pearson N, Griffiths P, Biddle SJH, Johnston JP, Haycraft E. Individual, behavioural and home environmental factors associated with eating behaviours in young adolescents. *Appetite*. 2017;112:35-43. doi:10.1016/j.appet.2017.01.001
17. Yee AZ, Lwin MO, Ho SS. The influence of parental practices on child promotive and preventive food consumption behaviors: a systematic review and meta-analysis. *Int J Behav Nutr Phys Act*. 2017;14(1):47. doi:10.1186/s12966-017-0501-3
18. Mekonnen T, Papadopoulou E, Arah OA, Brantsæter AL, Lien N, Gebremariam MK. Socioeconomic inequalities in children's weight, height and BMI trajectories in Norway. *Scientific Reports*. 2021;11(1):4979. doi:10.1038/s41598-021-84615-w
19. Alvarado SE. Neighborhood disadvantage and obesity across childhood and adolescence: Evidence from the NLSY children and young adults cohort (1986–2010). *Social Science Research*. 2016;57:80-98. doi:<https://doi.org/10.1016/j.ssresearch.2016.01.008>
20. Pedersen M, Giorgis-Allemand L, Bernard C, et al. Ambient air pollution and low birthweight: a European cohort study (ESCAPE). *The lancet Respiratory medicine*. 2013;1(9):695-704.
21. Nieuwenhuijsen MJ, Kruize H, Gidlow C, et al. Positive health effects of the natural outdoor environment in typical populations in different regions in Europe (PHENOTYPE): a study programme protocol. *BMJ open*. 2014;4(4):e004951.
22. Petravičienė I, Grazulevičienė R, Andrusaitė S, Dedele A, Nieuwenhuijsen MJ. Impact of the Social and Natural Environment on Preschool-Age Children Weight. *International journal of environmental research and public health* 2018
doi:10.3390/ijerph15030449.

23. Dadvand P, Villanueva CM, Font-Ribera L, et al. Risks and benefits of green spaces for children: a cross-sectional study of associations with sedentary behavior, obesity, asthma, and allergy. *Environ Health Perspect*. 2014;122(12):1329-35. doi:10.1289/ehp.1308038
24. James P, Banay RF, Hart JE, Laden F. Erratum to: A Review of the Health Benefits of Greenness. *Current Epidemiology Reports*. 2015;2(3):218-. doi:10.1007/s40471-015-0044-6
25. Nieuwenhuijsen MJ, Agier L, Basagaña X, et al. Influence of the Urban Exposome on Birth Weight. *Environmental Health Perspectives*. 2019;127(4):047007. doi:doi:10.1289/EHP3971
26. Dzhambov AM, Dimitrova DD, Dimitrakova ED. Association between residential greenness and birth weight: Systematic review and meta-analysis. *Urban Forestry & Urban Greening*. 2014;13(4):621-9. doi:<https://doi.org/10.1016/j.ufug.2014.09.004>
27. de Bont J, Hughes R, Tilling K, et al. Early life exposure to air pollution, green spaces and built environment, and body mass index growth trajectories during the first 5 years of life: A large longitudinal study. *Environmental Pollution*. 2020;266:115266. doi:<https://doi.org/10.1016/j.envpol.2020.115266>
28. WHO. Diagnostic criteria and classification of hyperglycaemia first detected in pregnancy: a World Health Organization Guideline. *Diabetes Res Clin Pract*. 2014;103(3):341-63. doi:10.1016/j.diabres.2013.10.012
29. Brand JS, West J, Tuffnell D, et al. Gestational diabetes and ultrasound-assessed fetal growth in South Asian and White European women: findings from a prospective pregnancy cohort. *BMC Med*. 2018;16(1):203. doi:10.1186/s12916-018-1191-7
30. Sovio U, Murphy HR, Smith GC. Accelerated Fetal Growth Prior to Diagnosis of Gestational Diabetes Mellitus: A Prospective Cohort Study of Nulliparous Women. *Diabetes Care*. 2016;39(6):982-7. doi:10.2337/dc16-0160

31. Tyrrell J, Richmond RC, Palmer TM, et al. Genetic Evidence for Causal Relationships Between Maternal Obesity-Related Traits and Birth Weight. *Jama*. 2016;315(11):1129-40. doi:10.1001/jama.2016.1975
32. Thompson WD, Beaumont RN, Kuang A, et al. Higher maternal adiposity reduces offspring birthweight if associated with a metabolically favourable profile. *Diabetologia*. 2021;64(12):2790-802. doi:10.1007/s00125-021-05570-9
33. Rogers IS, Ness AR, Steer CD, et al. Associations of size at birth and dual-energy X-ray absorptiometry measures of lean and fat mass at 9 to 10 y of age. *Am J Clin Nutr*. 2006;84(4):739-47. doi:10.1093/ajcn/84.4.739
34. Yu ZB, Han SP, Zhu GZ, et al. Birth weight and subsequent risk of obesity: a systematic review and meta-analysis. *Obes Rev*. 2011;12(7):525-42. doi:10.1111/j.1467-789X.2011.00867.x
35. Lawlor DA, Lichtenstein P, Långström N. Association of maternal diabetes mellitus in pregnancy with offspring adiposity into early adulthood: sibling study in a prospective cohort of 280,866 men from 248,293 families. *Circulation*. 2011;123(3):258-65. doi:10.1161/circulationaha.110.980169
36. Dabelea D, Hanson RL, Lindsay RS, et al. Intrauterine exposure to diabetes conveys risks for type 2 diabetes and obesity: a study of discordant sibships. *Diabetes*. 2000;49(12):2208-11. doi:10.2337/diabetes.49.12.2208
37. Richardson TG, Sanderson E, Elsworth B, Tilling K, Davey Smith G. Use of genetic variation to separate the effects of early and later life adiposity on disease risk: mendelian randomisation study. *BMJ*. 2020;369:m1203. doi:10.1136/bmj.m1203

38. van Eijsden M, Vrijkotte TG, Gemke RJ, van der Wal MF. Cohort profile: the Amsterdam Born Children and their Development (ABCD) study. *Int J Epidemiol*. 2011;40(5):1176-86. doi:10.1093/ije/dyq128
39. Moschonis G, Kalliora AC, Karatzi K, et al. Perinatal, sociodemographic and lifestyle correlates of increased total and visceral fat mass levels in schoolchildren in Greece: the Healthy Growth Study. *Public Health Nutrition*. 2017;20(4):660-70. doi:10.1017/S1368980016002640
40. UNESCO United Nations Educational Organization. *International Standard Classification of Education, ISCED 1997*. Paris, France: United Nations Educational, Scientific and Cultural Organization; 2003.
41. Maitre L, de Bont J, Casas M, et al. Human Early Life Exposome (HELIX) study: a European population-based exposome cohort. *BMJ Open*. 2018;8(9):e021311. doi:10.1136/bmjopen-2017-021311
42. Weier J. HD. Measuring vegetation (NDVI & EVI). 2000. http://earthobservatory.nasa.gov/Features/MeasuringVegetation/measuring_vegetation_2.php. Accessed 30 March 2022.
43. de Onis M, Lobstein T. Defining obesity risk status in the general childhood population: which cut-offs should we use? *Int J Pediatr Obes*. 2010;5(6):458-60. doi:10.3109/17477161003615583
44. de Onis M, Onyango AW, Borghi E, Siyam A, Nishida C, Siekmann J. Development of a WHO growth reference for school-aged children and adolescents. *Bull World Health Organ*. 2007;85(9):660-7. doi:10.2471/blt.07.043497

45. Gaye A, Marcon Y, Isaeva J, et al. DataSHIELD: taking the analysis to the data, not the data to the analysis. *International Journal of Epidemiology*. 2014;43(6):1929-44.
doi:10.1093/ije/dyu188
46. Hughes RA, Heron J, Sterne JAC, Tilling K. Accounting for missing data in statistical analyses: multiple imputation is not always the answer. *International Journal of Epidemiology*. 2019;48(4):1294-304. doi:10.1093/ije/dyz032
47. Aubin H-J, Farley A, Lycett D, Lahmek P, Aveyard P. Weight gain in smokers after quitting cigarettes: meta-analysis. *BMJ : British Medical Journal*. 2012;345:e4439.
doi:10.1136/bmj.e4439
48. Viechtbauer W, Viechtbauer MW. Package 'metafor'. The Comprehensive R Archive Network. Package 'metafor'. <http://cran.r-project.org/web/packages/metafor/metafor.pdf>. 2015.
49. Howe LD, Tilling K, Matijasevich A, et al. Linear spline multilevel models for summarising childhood growth trajectories: A guide to their application using examples from five birth cohorts. *Statistical Methods in Medical Research*. 2016;25(5):1854-74.
doi:10.1177/0962280213503925
50. Hughes RA, Tilling K, Lawlor DA. Combining Longitudinal Data From Different Cohorts to Examine the Life-Course Trajectory. *Am J Epidemiol*. 2021;190(12):2680-9.
doi:10.1093/aje/kwab190

Table 1: Summary of cohort characteristics

Cohort name	Country	City/area	Design	No. of included children	Birth year(s)	Age range of included children (years)
ABCD	Netherlands	Amsterdam	Prospective	6152	2003 - 2004	0 - 12
ALSPAC	United Kingdom	Greater Bristol	Prospective	10499	1991 - 1992	0 - 17
BiB	United Kingdom	Bradford	Prospective	13400	2007 - 2011	0 - 10
CHOP	Germany, Belgium, Italy, Poland, Spain	Munich, Nuremberg, Liege, Brussels, Milano, Warsaw, Reus, Tarragona	Prospective	1669	2002 - 2004	0 - 11
DNBC	Denmark	Greater Copenhagen	Prospective	77534	1996 - 2002	0 - 18
EDEN	France	Nancy & Poitiers	Prospective	1765	2003 - 2005	0 - 12
ELFE	France		Prospective	17926	2011	0 - 9
GECKO	Netherlands	Drenthe	Prospective	2748	2006 - 2007	0 - 11
Gen-R	Netherlands	Rotterdam	Prospective	8680	2002 - 2006	0 - 10
HGS	Greece	Attica, Etoloakarnania, Thessaloniki, Iraklion	Cross-sectional ^a	2570	1994 - 2000	10 - 14
INMA	Spain	Gipuzkoa, Sabadell, Valencia	Prospective	1918	2003 - 2008	0 - 11
MoBa	Norway		Prospective	85589	1999 - 2008	0 - 13
NFBC66	Finland		Prospective	7709	1966	0 - 16
NFBC86	Finland		Prospective	7315	1985 - 1986	0 - 16
NINFEA	Italy	Florence, Rome, Turin	Prospective	6532	2005 - 2016	0 - 14
Raine	Australia	Perth	Prospective	2548	1989 - 1992	1 - 17
Rhea	Greece	Crete	Prospective	1002	2007 - 2008	0 - 12
SWS	United Kingdom	Southampton	Prospective	3012	1998 - 2007	0 - 10

Abbreviations: ABCD, Amsterdam Born Children and their Development; HGS, Healthy Growth Study.

^aInformation on early life exposures collected retrospectively.

ORIGINAL UNEDITED MANUSCRIPT

Figure 1: Flow chart of cohorts and participants. Signed agreements received and DataSHIELD access credentials provided. Signed agreements received and DataSHIELD access credentials provided.

Figure 2: Exposure descriptive statistics

2a: Maternal education: dark blue = low education, teal = medium education, yellow = high education, orange = missing

2b: Normalised Difference Vegetation Index

2c: Gestational diabetes: dark blue = no pregnancy diabetes, teal = pregnancy diabetes, orange = missing

No data was available on gestational diabetes for CHOP as this was an exclusion criterion for entry into the study. For all other studies, figures are blank where the exposure is entirely missing. Values for NDVI represent median and interquartile range. NDVI = Normalised Difference Vegetation Index.

Figure 3: Associations between maternal education at birth and child BMI z-scores using one-stage IPD meta-analysis.

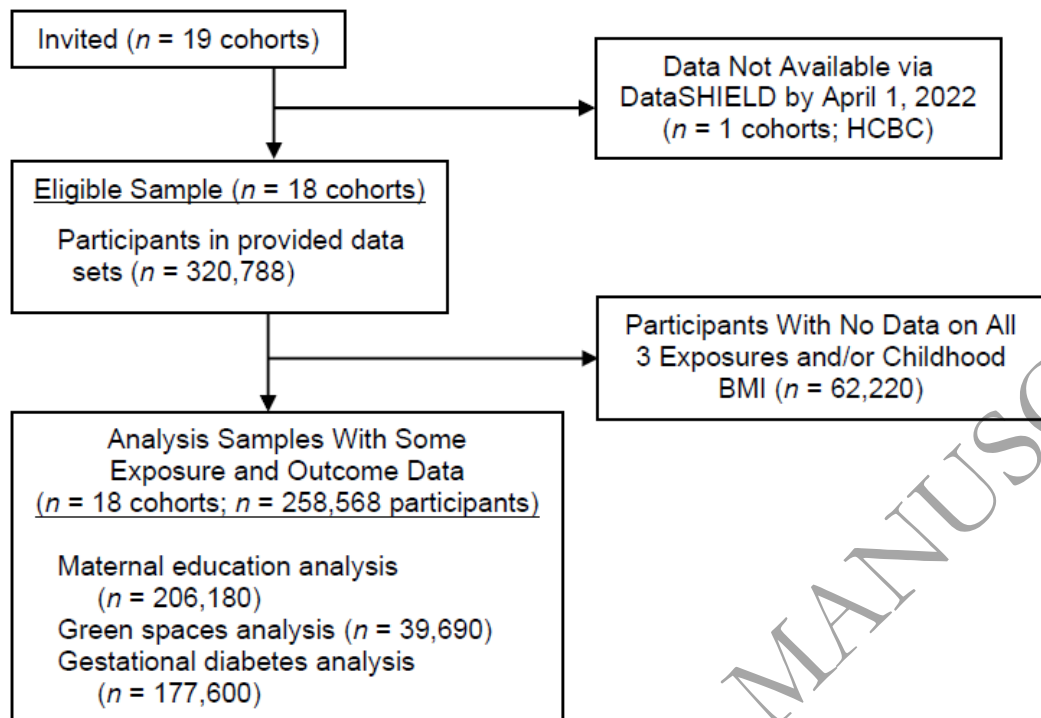
Models adjusted for cohort, child sex and exact age at measurement in days. Solid fill = maximum available sample; no fill = restricted to sample with available data at ages 14-17.

Figure 4: Associations between Normalised Difference Vegetation Index in pregnancy and child BMI z-scores using one-stage IPD meta-analysis

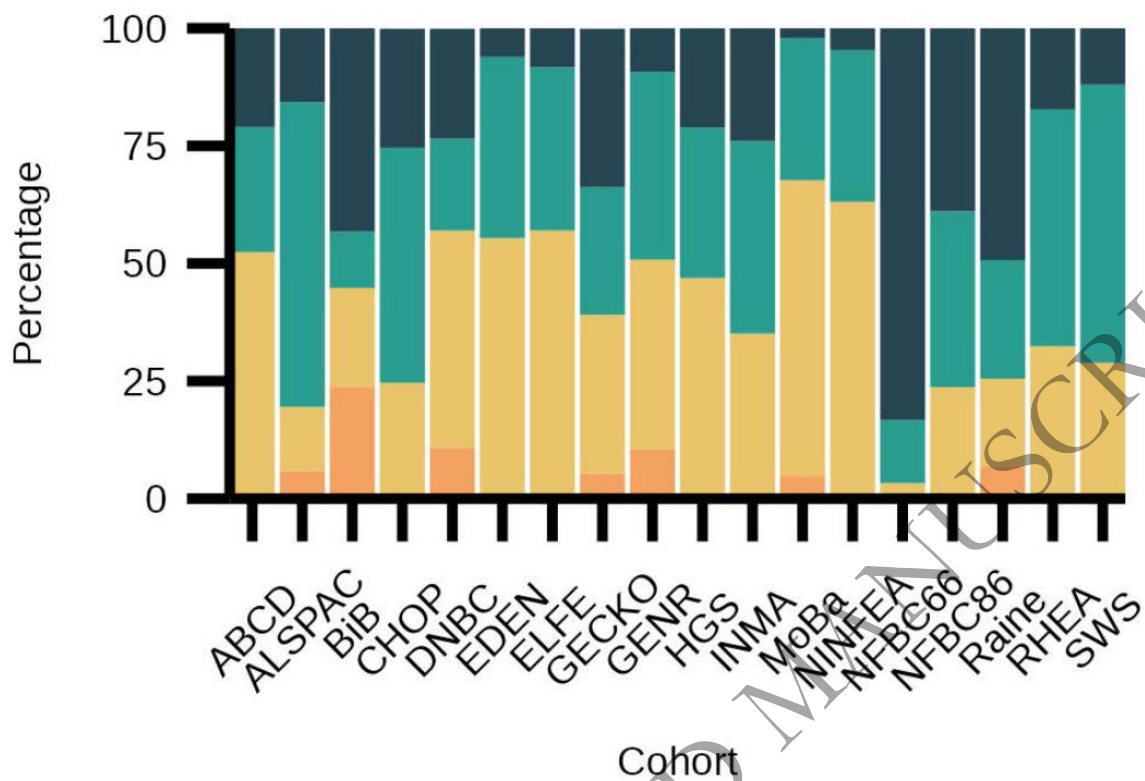
Models adjusted for cohort, child sex, exact age at measurement, maternal education, parity and area deprivation. Normalised Difference Vegetation Index scaled by interquartile range. Solid fill = maximum available sample; no fill = restricted to sample with available data at ages 14-17. BMI = Body Mass Index.

Figure 5: Associations between gestational diabetes and child BMI z-scores using one-stage IPD meta-analysis

Models adjusted for cohort, child sex, exact age at measurement, maternal education, maternal age at birth, pre-pregnancy BMI, pregnancy smoking and parity. Solid fill = maximum available sample; no fill = restricted to sample with available data at ages 14-17. BMI = Body Mass Index.

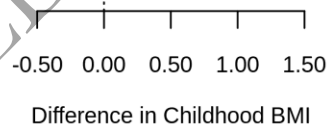


ORIGINAL UNEDITED MANUSCRIPT



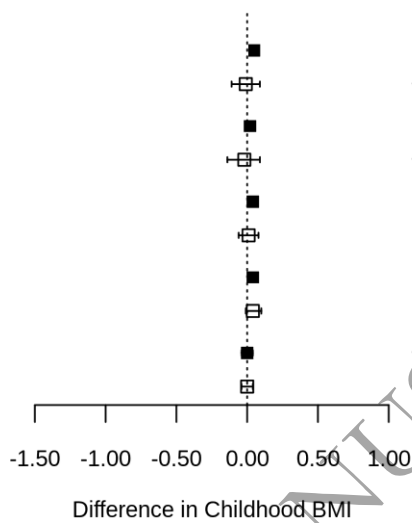
ORIGINAL UNEDITED MANUSCRIPT

Age, years	Reference (high)	Exposed	No. of Studies	Estimate (95% CI)
Medium education				
0-1	105886	59454	17	0.01 (0.00, 0.02)
	3914	4737	5	0.02 (-0.02, 0.07)
2-3	47261	26551	16	-0.02 (-0.04, -0.01)
	1592	3283	4	-0.03 (-0.08, 0.03)
4-7	76650	41647	17	0.09 (0.08, 0.10)
	4336	7196	5	0.02 (-0.03, 0.06)
8-13	59502	33481	18	0.15 (0.13, 0.16)
	4622	8713	5	0.10 (0.05, 0.14)
14-17	6127	9938	5	0.10 (0.07, 0.14)
	6127	9938	5	0.10 (0.07, 0.14)
Low education				
0-1	105886	35220	17	0.02 (0.00, 0.03)
	3914	9077	5	0.04 (-0.00, 0.09)
2-3	47261	13017	16	0.03 (0.00, 0.05)
	1592	6342	4	-0.01 (-0.07, 0.05)
4-7	76650	28268	17	0.16 (0.14, 0.17)
	4336	9520	5	0.02 (-0.02, 0.07)
8-13	59502	24461	18	0.24 (0.22, 0.26)
	4622	9714	5	0.15 (0.10, 0.20)
14-17	6127	11188	5	0.20 (0.16, 0.23)
	6127	11188	5	0.20 (0.16, 0.23)

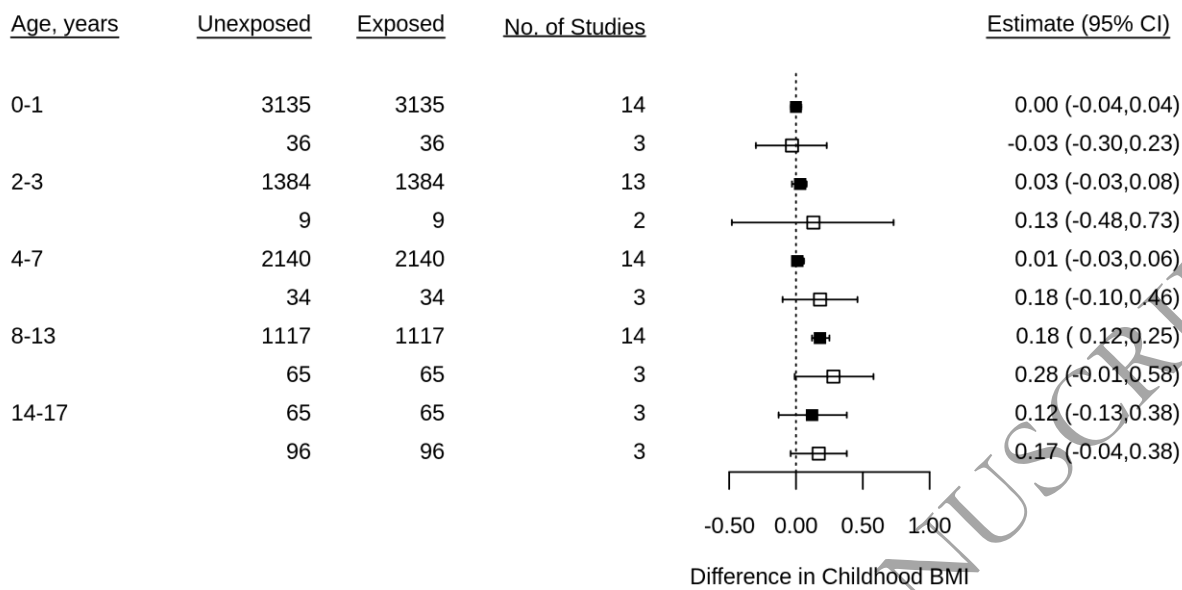


ORIGINAL UNEDITED MANUSCRIPT

<u>Age, years</u>	<u>No. of Participants</u>	<u>No. of Studies</u>	<u>Estimate (95% CI)</u>
0-1	39,690	10	0.05 (0.03,0.06)
	1,166	2	-0.01 (-0.11,0.09)
2-3	22,658	9	0.02 (0.00,0.04)
	759	1	-0.02 (-0.14,0.09)
4-7	36,040	10	0.04 (0.02,0.05)
	4,005	2	0.01 (-0.06,0.08)
8-13	29,566	10	0.04 (0.01,0.06)
	6,313	2	0.04 (-0.01,0.10)
14-17	7,096	2	-0.00 (-0.04,0.04)
	7,096	2	-0.00 (-0.04,0.04)



ORIGINAL UNEDITED MANUSCRIPT



ORIGINAL UNEDITED MANUSCRIPT