

Supplementary Materials

Bismuth Oxyhalides for NO_x Degradation under Visible Light: The Role of the Chloride Precursor

Francesca Tessore ^{1,*}, Federico Galli ², Dalma Schieppati ², Daria C. Boffito ², Alessandro Di Michele ³, Francesco Demartin ¹, Giuseppina Cerrato ^{4,*} and Claudia L. Bianchi ¹

¹ Dipartimento di Chimica, Università degli Studi di Milano, via Golgi 19, 20133 Milano, Italy; francesco.demartin@unimi.it (F.D.); claudia.bianchi@unimi.it (C.L.B.)

² Chemical Engineering Department, Polytechnique Montréal, C.P. 6079, Succ. Centre-Ville, Montréal, QC H3C 3A7, Canada; federico.galli@polymtl.ca (F.G.); dalma.schieppati@polymtl.ca (D.S.); daria-camilla.boffito@polymtl.ca (D.C.B.)

³ Dipartimento di Fisica e Geologia, Università degli Studi di Perugia, via Pascoli, 06123 Perugia, Italy; alessandro.dimichele@collaboratori.unipg.it

⁴ Dipartimento di Chimica, Università degli Studi di Torino, via Pietro Giuria 7, 10125 Torino, Italy

* Correspondence: francesca.tessore@unimi.it (F.T.); giuseppina.cerrato@unito.it (G.C.)

XRPD

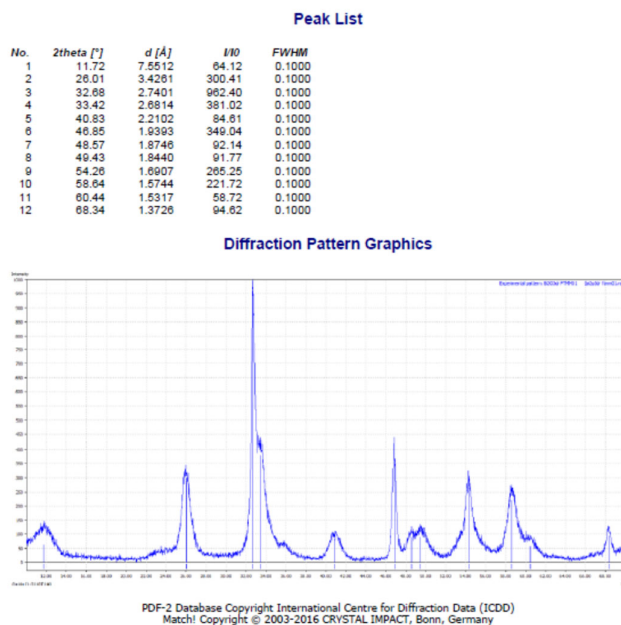


Figure S1. XRPD pattern of sample 1.

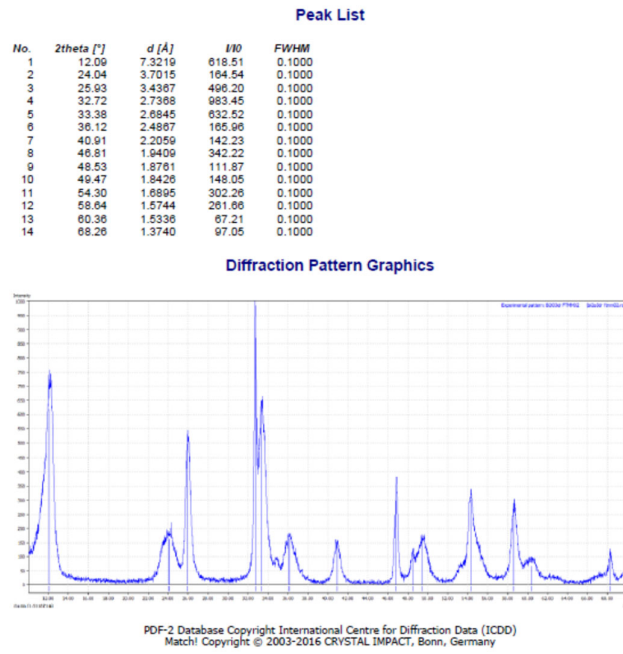


Figure S2. XRPD pattern of sample 2.

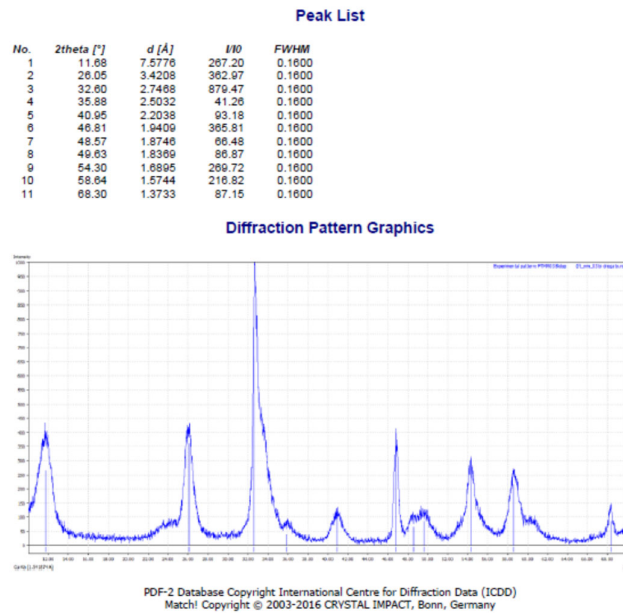


Figure S3. XRPD pattern of sample 3.

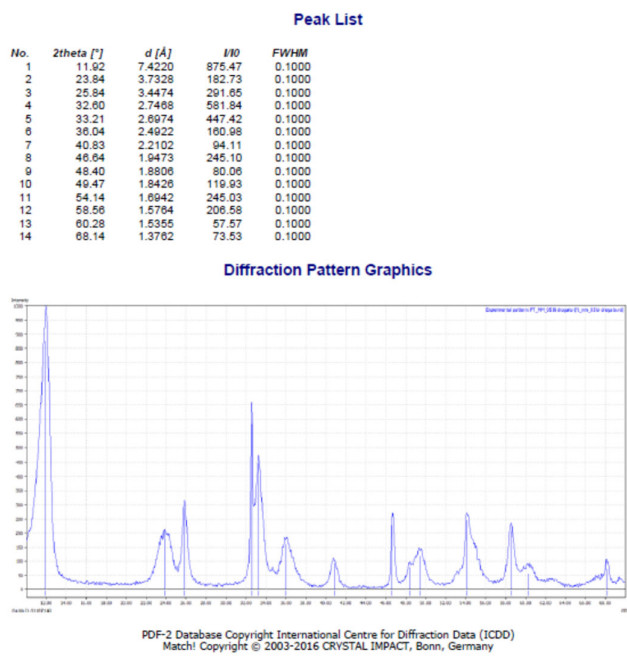


Figure S4. XRPD pattern of sample 4.

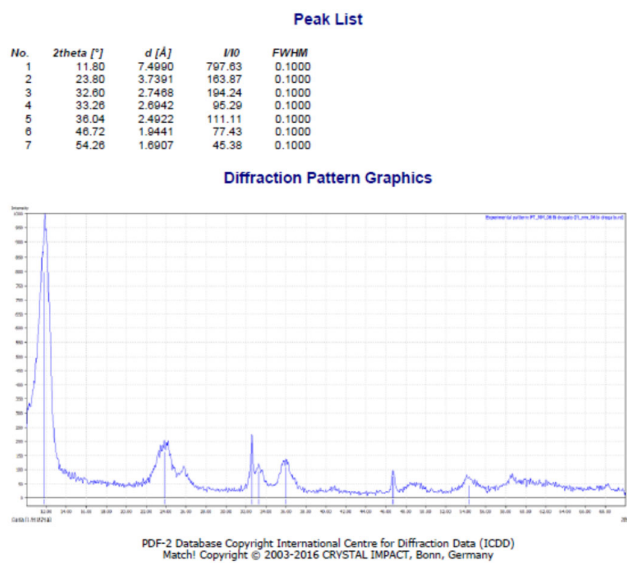


Figure S5. XRPD pattern of sample 5.

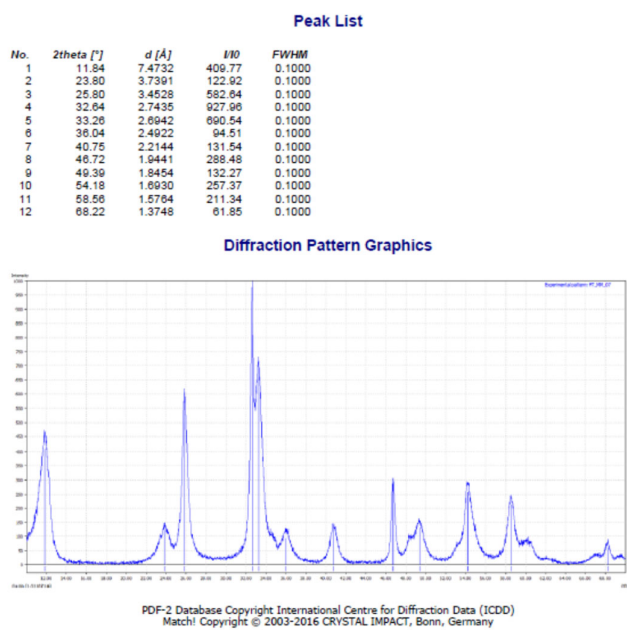


Figure S6. XRPD pattern of sample 6.

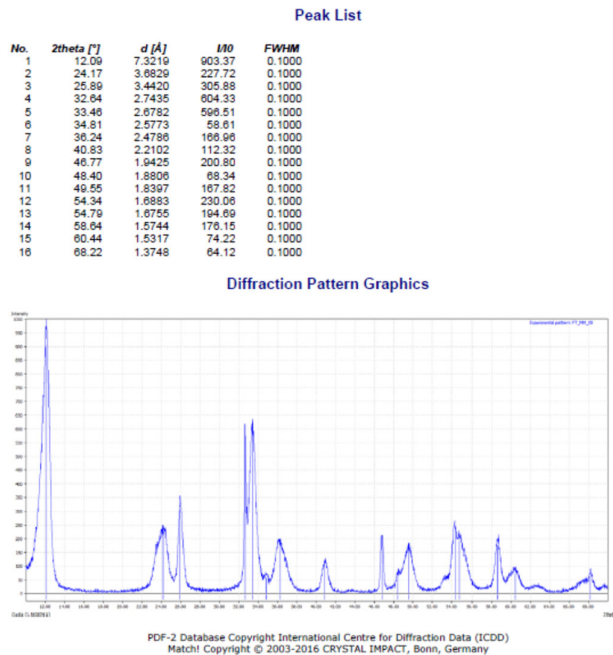


Figure S7. XRPD pattern of sample 7.

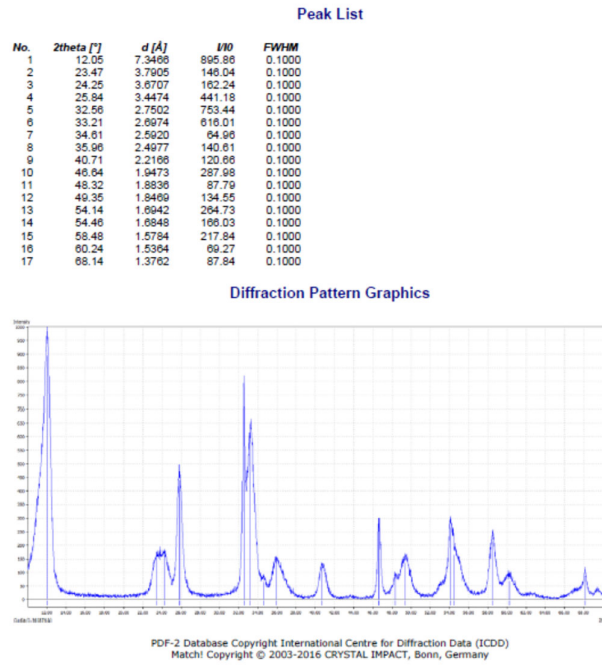


Figure S8. XRPD pattern of sample 8.

DRS

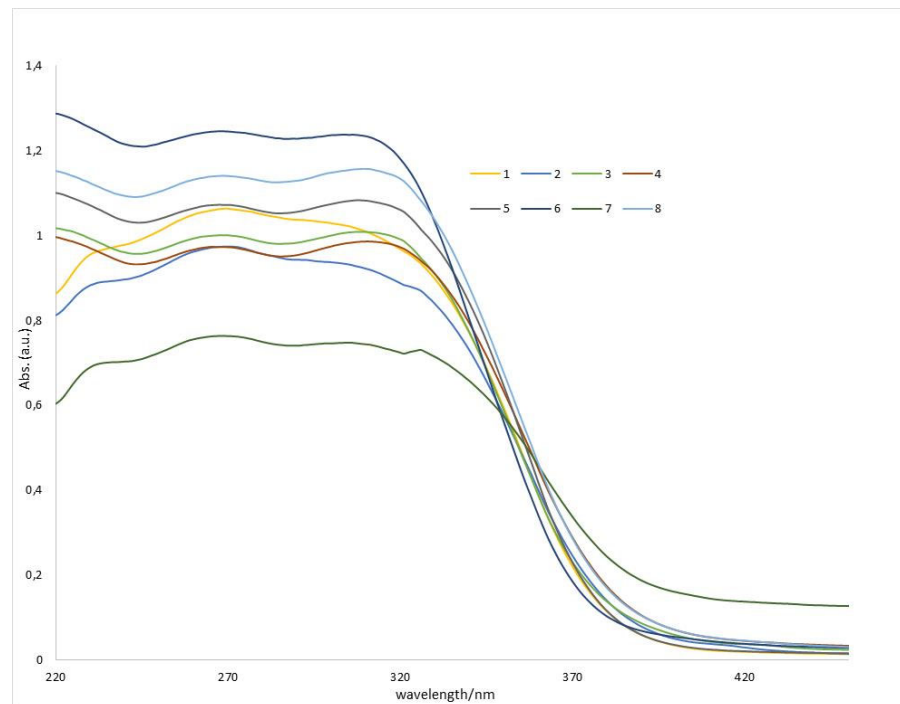


Figure S9. DRS spectra of samples 1-8.

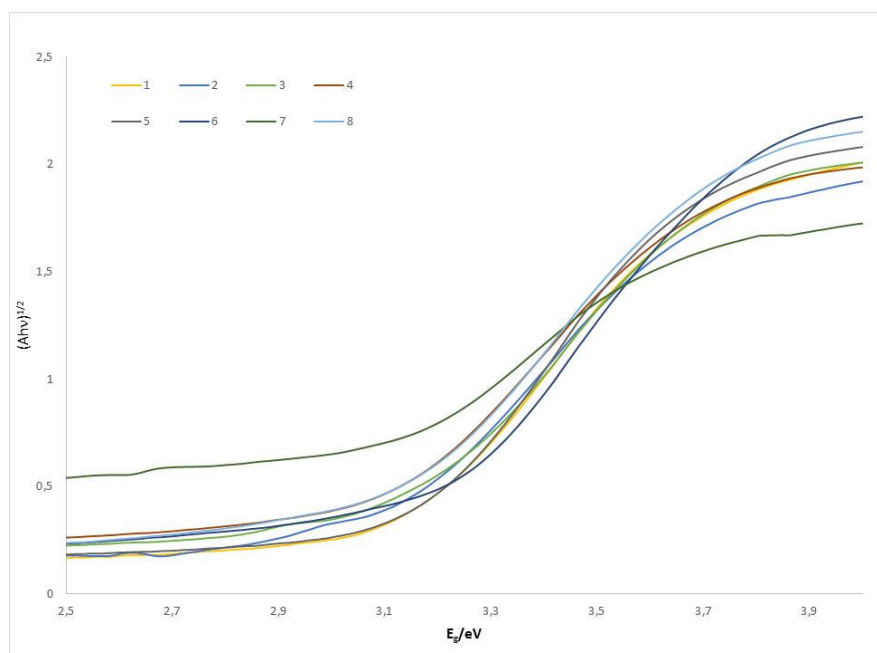


Figure S10. $(Ah\nu)^{1/2}$ values vs photoenergy for samples 1-8.

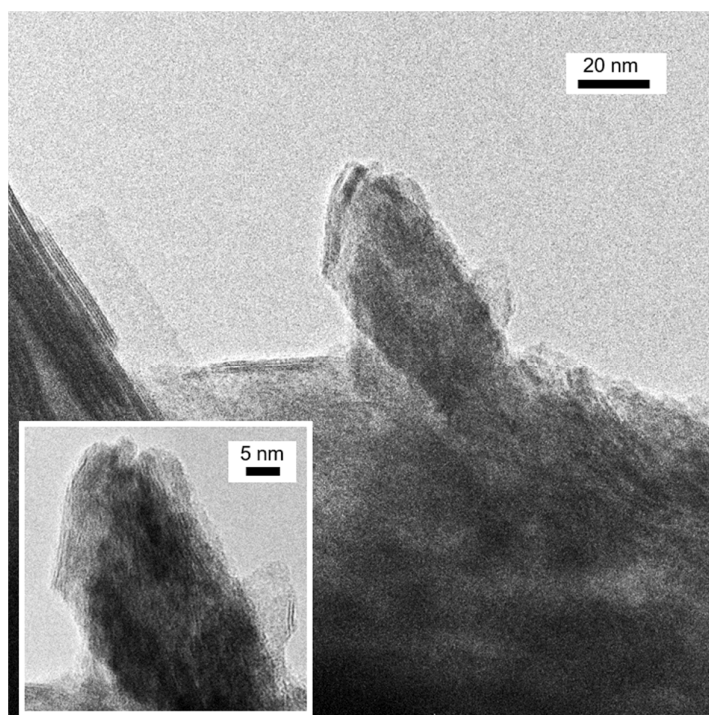


Figure S11. TEM-HRTEM images of sample 5.