

AperTO - Archivio Istituzionale Open Access dell'Università di Torino

**CD371-positive pediatric B-cell acute lymphoblastic leukemia: propensity to lineage switch and slow early response to treatment**

**This is a pre print version of the following article:**

*Original Citation:*

*Availability:*

This version is available <http://hdl.handle.net/2318/2008230> since 2024-08-29T12:26:47Z

*Published version:*

DOI:10.1182/blood.2023021952

*Terms of use:*

Open Access

Anyone can freely access the full text of works made available as "Open Access". Works made available under a Creative Commons license can be used according to the terms and conditions of said license. Use of all other works requires consent of the right holder (author or publisher) if not exempted from copyright protection by the applicable law.

(Article begins on next page)

**Table 1:** Patients and leukemia main features at diagnosis in the AIEOP cohort

Variable	Total pts		CD371+ pts		CD371- pts		P-value
	N	%	N	%	N	%	
<b>Total</b>	843	100	76	9.0	767	91.0	
<b>Age</b>							<b>&lt; 0.001</b>
1-9 years	676	80.2	41	54.0	635	82.8	
10-17 years	167	19.8	35	46.0	132	17.2	
<b>Gender</b>							0.770
Male	457	54.2	40	52.6	417	54.4	
Female	386	45.8	36	47.4	350	45.6	
<b>WBC count</b>							0.240
< 20 x 10 <sup>9</sup> /L	611	72.6	61	80.3	550	71.8	
20-99 x 10 <sup>9</sup> /L	186	22.1	11	14.5	175	22.8	
≥ 100 x 10 <sup>9</sup> /L	45	5.3	4	5.2	41	5.4	
<b>DNA index</b>							<b>&lt; 0.001</b>
= 1.00	511		66		445		
≠ 1.00	324		9		315		
<b>Translocations</b>							
<i>ETV6-RUNX1</i>	191	23.1	1	1.4	190	25.2	<b>&lt; 0.001</b>
<i>TCF3-PBX1</i>	30	3.7	0	0.0	30	4.1	0.100
<i>KMT2A-AFF1</i>	6	0.7	1	1.4	5	0.7	0.430
<b>Immunophenotype at diagnosis (EGIL)</b>							<b>&lt;0.001</b>
BI-ALL	22	2.6	10	13.2	12	1.6	
BII-ALL	635	75.3	66	86.8	569	74.2	
BIII-ALL	186	22.1	0	0.0	186	24.2	
<b>Ambiguous leukemia</b>							
BAL (EGIL)	7	0.8	1	1.3	6	0.8	0.490
MPAL (WHO)	24	2.8	3	4.0	21	2.7	0.540

**Data not available:** WBC count: 1 patient; DNA index: 8 patients; BAL: 2 patients

**Abbreviations:** pts: patients; N: number; %: percentage; WBC: white blood cell; ALL: acute lymphoblastic leukemia; BAL: biphenotypic leukemia; MPAL: mixed-phenotype leukemia

**Table 2:** Immunophenotype at diagnosis: distribution of antigen expression intensity in CD371+ and CD371- BCP-ALL

Variable	AIEOP cohort					P	iBFM flow network cohort					P	P*
	Total n°	CD371 pos n°	%	CD371 neg n°	%		Total n°	CD371 pos n°	%	CD371 neg n°	%		
<b>Total</b>	843	76	9.02	767	90.98	-	969	84	8.67	885	91.33	-	0.795
<b>CD45</b>						<b>&lt;0.001</b>						<b>&lt;0.001</b>	
STRONG	258	50	19.38	208	80.62		169	30	17.75	139	82.25		0.674
WEAK	457	24	5.25	433	94.75		200	5	2.50	195	97.50		0.114
PP	2	1	50.00	1	50.00		-						
NEG	124	1	0.81	123	99.19		63	0	0.00	63	100.00		1.000
NOT DONE	2	0		2			537	49		488			
<b>CD19</b>						0.099						0.199	
STRONG	819	74	9.04	745	90.96		963	83	8.62	880	91.38		0.757
WEAK	23	1	4.35	22	95.65		4	0	0.00	4	100.00		1.000
PP	1	1	100.00	0	0.0		-						
NEG	0						2	1	50.00	1	50.00		
<b>CD10</b>						<b>&lt;0.001</b>						<b>&lt;0.001</b>	
STRONG	786	55	7.00	731	93.00		909	63	6.93	846	93.07		0.211
WEAK	22	9	40.91	13	59.09		34	14	41.18	20	58.82		0.984
PP	13	2	15.38	11	84.62		-						
NEG	22	10	45.45	12	54.54		26	7	26.92	19	73.08		0.186
<b>CD58</b>						<b>0.014</b>						0.380	
STRONG	749	73	9.75	676	90.25		687	64	9.32	623	90.68		0.077
WEAK	82	1	1.22	81	98.78		12	2	16.67	10	83.33		<b>0.042</b>
PP	1	1	100.00	0	0.00		-						
NEG	8	1	12.50	7	87.50		1	0	0.00	1	100.00		1.000
NOT DONE	3	0		3			270	18		252			
<b>CD34</b>						<b>0.013</b>						<b>&lt;0.001</b>	
STRONG	645	68	10.54	577	89.46		659	78	11.84	581	88.16		0.459
WEAK	67	0	0.00	67	100.00		150	4	2.67	146	97.33		0.314
PP	45	6	13.33	39	86.67		-						
NEG	79	2	2.53	77	97.47		160	2	1.25	158	98.75		0.601
NOT DONE	7	0		7			-						
<b>CD2</b>						<b>&lt;0.001</b>						<b>&lt;0.001</b>	
STRONG	16	14	87.50	2	12.50		30	27	90.00	3	10.00		1.000
WEAK	17	16	94.12	1	5.88		84	20	23.81	64	76.19		<b>&lt;0.001</b>
PP	8	8	100.00	0	0.00		-						
NEG	800	38	4.75	762	95.25		855	37	4.33	818	95.67		0.680
NOT DONE	2	0		2			-						
<b>CD56</b>						<b>&lt;0.001</b>						<b>&lt;0.001</b>	
STRONG	7	4	57.14	3	42.86		13	4	30.77	9	69.23		0.356
WEAK	13	7	53.85	6	46.15		67	14	20.90	53	79.10		<b>0.014</b>
PP	1	1	100.00	0	0.00		-						
NEG	811	64	7.89	747	92.11		889	66	7.42	823	92.58		0.717
NOT DONE	11	0		11			-						
<b>MYELOID ANTIGENS**</b>						<b>&lt;0.001</b>						<b>&lt;0.001</b>	
YES	289	42	14.53	247	85.47		636	70	11.01	566	88.99		0.128
NO	554	34	6.14	520	93.86		333	14	4.20	319	95.80		0.218

P\*: comparison of variables distribution between AIEOP and iBFM Flow Network cohorts

\*\*Any myeloid antigen of CD11b, CD14, CD15, CD33, CD64, CD65, MPO, LYSO, CD13, CD117

**Abbreviations:** POS: positive; STRONG: strong positivity; WEAK: weak positivity; PP: partial positivity; NEG: negative; YES: any positivity (weak, strong, partial positive); NO: negativity of all myeloid antigens.

**Figure 1:** Myelomonocytic switch in CD371 positive BCP-ALL. With the beginning of steroid as per AIEOP-BFM ALL 2009 protocol, surface antigen expression of residual lymphoblastic cells showed a myelomonocytic switch. It displayed two different patterns: **a-** single population of blast cells with heterogeneous expression of CD19 (single population pattern: orange population); **b-** a two-populations pattern: the first population keeping the immunophenotype of the diagnosis (blue population); the second population showing a downregulation of CD19 and CD34, an upregulation of CD45, and an increase of SSC (orange population).

**Figure 1a**

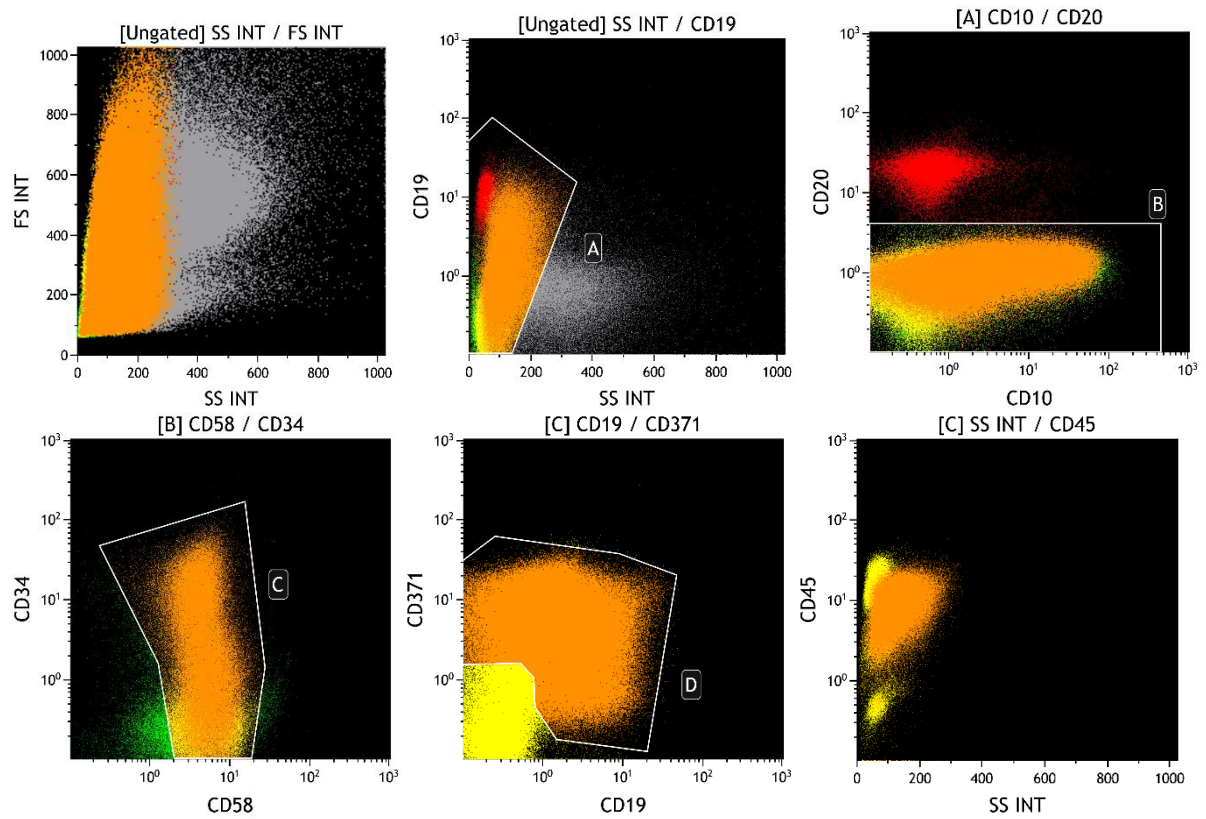
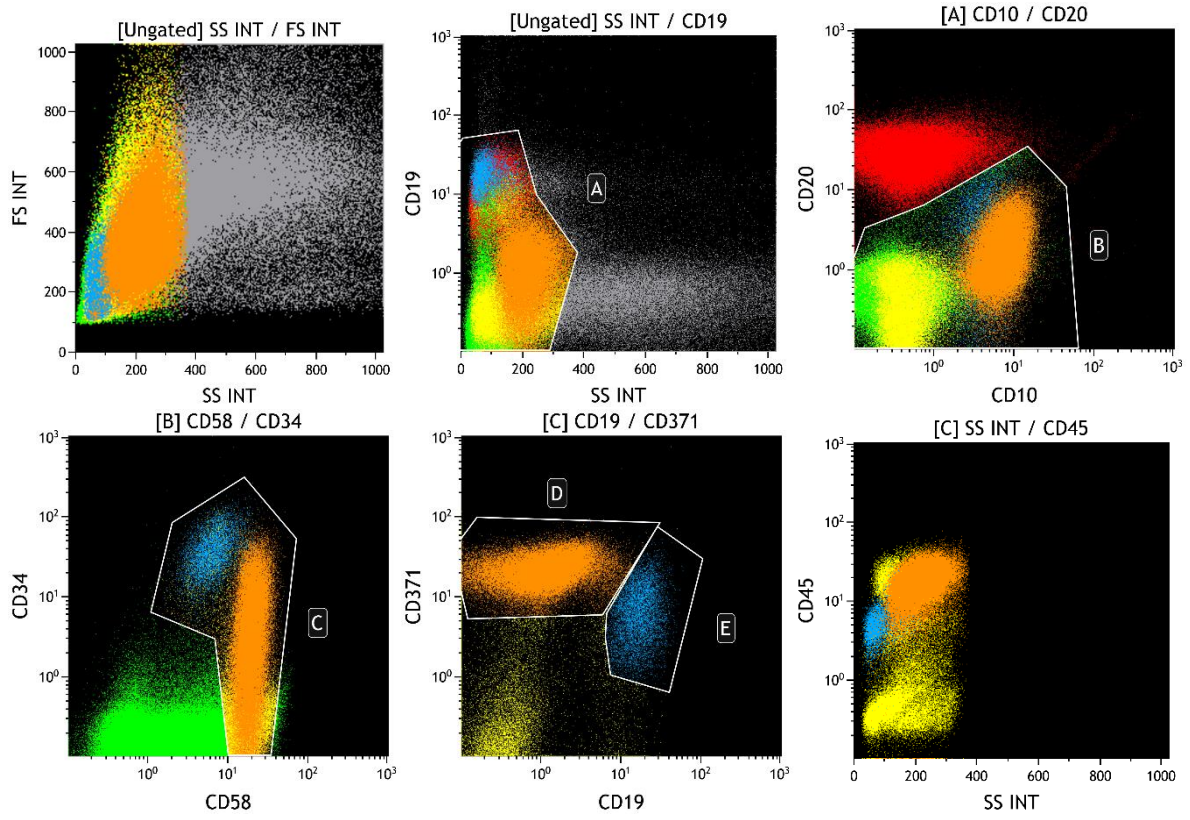
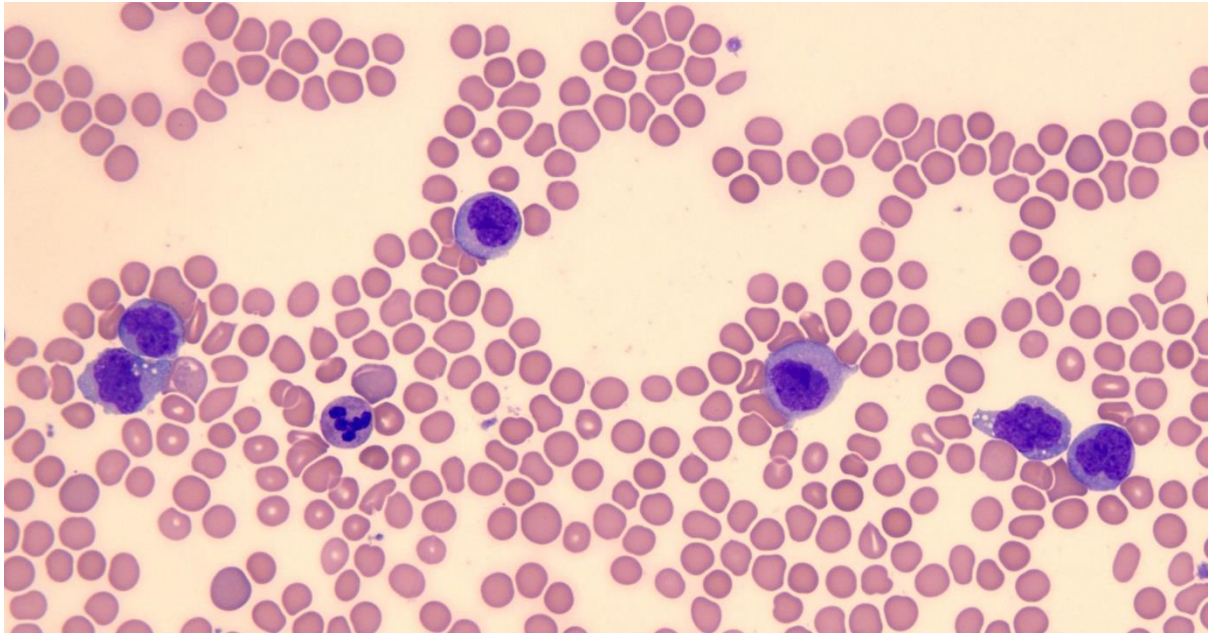


Figure 1b



**Figure 2:** CD371+ BCP-ALL: peripheral blood samples on Day 8 of Induction therapy. Standard morphology revealed a population of monocytes at different maturation stages.

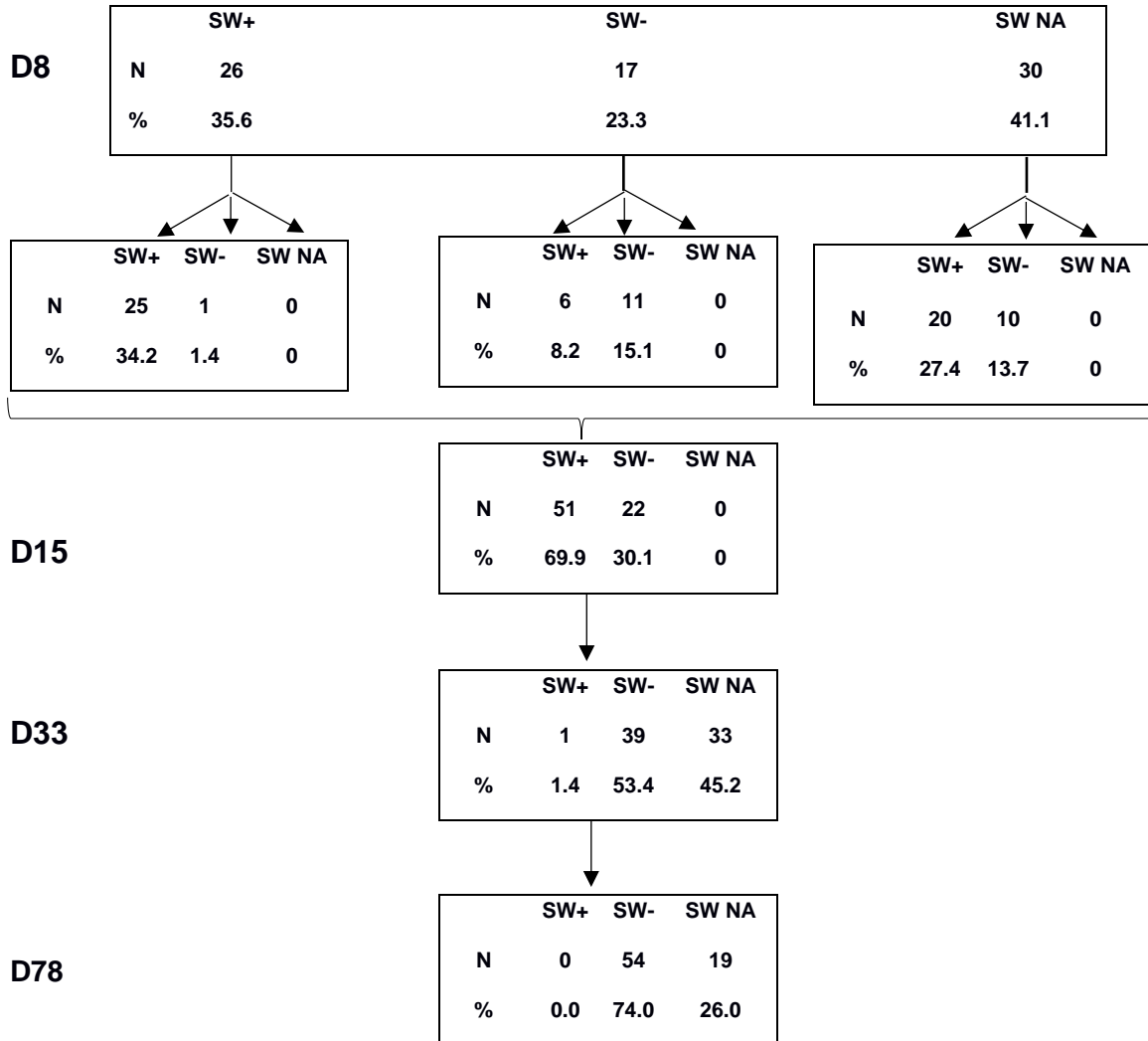


**Table 3:** Distribution of myelomonocytic switch at different disease reevaluation time points in CD371 positive BCP-ALL

	Total		AIEOP		iBFM		<i>P</i>
	n°	%	n°	%	n°	%	
<b>Total CD371+ at diagnosis</b>	157		73		84		
<b>Switch on Day 8</b>							0.217
Yes	42	65.6	26	60.5	16	76.19	
No	22	34.4	17	39.5	5	23.81	
NA	103		30		63		
<b>Switch on Day 15</b>							0.265
Yes	100	65.4	51	69.9	49	61.25	
No	53	34.6	22	30.1	31	38.75	
NA	4		0		4		
<b>Switch on Day 33</b>							0.317
Yes	4	5.6	1	2.5	3	9.38	
No	68	94.4	39	97.5	29	90.63	
NA	95		33		52		
<b>Switch on Day 78</b>							
Yes	0	0.0	0	0.0	0	0.00	
No	86	100.0	54	100.0	32	100.00	
NA	81		19		52		

**Abbreviations:** n: number of samples; %: percentage; Switch +: presence of myelomonocytic switch; Switch -: absence of myelomonocytic switch.

**Figure 3:** Myelomonocytic switch evolution in all 73 evaluable CD371 positive BCP-ALL during Induction and Consolidation Therapy as per AIEOP-BFM ALL 2009 protocol. Myelomonocytic switch could be observed (detection limit  $1 \times 10^{-4}$ ) since the first re-evaluation time point on Day 8 or later on Day 15 and Day 33. It was never detected on Day 78 in the AIEOP cohort.



**Abbreviations:** SW+: presence of lineage switch; SW-: absence of lineage switch population; SW NA: MCF-MRD not available; N: number of samples; %: percentage; D: day



**Table 4:** Response to Induction and Consolidation Therapy and risk group stratification according to AIEOP-BFM ALL 2009 protocol criteria.

Variable	AIEOP cohort					P	iBFM flow network cohort					P*
	Total	CD371 pos		CD371 neg			Total	CD371 pos		CD371 neg		
	n°	n°	%	n°	%		n°	n°	%	n°	%	
<b>Total</b>	843	76	9.02	767	90.98		969	84	8.67	885	91.33	0.795
<b>Prednisone response</b>						0.470						<0.001
Good (PGR)	787	73	9.28	714	90.72		904	69	7.63	835	92.37	0.225
Poor (PPR)	55	3	5.45	52	94.55		56	15	26.79	41	73.21	<b>0.004</b>
NA	1	0		1			9	0		9		
<b>MCF-MRD Day 15</b>						<b>0.008</b>						<0.001
<0.1%	308	15	4.87	293	95.13		284	15	5.28	269	94.72	0.820
≥0.1-<10%	431	47	11.14	384	89.10		515	42	8.16	473	91.84	0.149
≥10%	88	11	12.50	77	87.50		103	21	20.39	82	79.61	0.147
NA	16	3		13			67	6		61		
<b>Response to Induction IA</b>						1.000						0.087
CR Day 33	825	75	9.09	750	90.91		950	80	8.42	870	91.58	0.618
Non-CR Day 33	10	0	0.00	10	100.00		6	2	33.33	4	66.67	0.125
NA	8	1		7			13	2		11		
<b>PCR-MRD final</b>						< 0.001						<0.001
Standard	273	11	4.03	262	95.97		337	6	1.78	331	98.22	0.094
Medium	443	41	9.26	402	90.74		487	38	7.80	449	92.2	0.428
MRD-SER	66	18	27.27	48	72.73		88	27	30.68	61	69.31	0.646
High	25	4	16.00	21	84.00		29	11	37.93	18	62.07	0.126
NA	36	2		34			28	2		26		
<b>Final risk group</b>						< 0.001						<0.001
Standard	277	12	4.33	265	95.67		314	6	1.91	308	98.09	0.088
Medium	390	37	9.49	353	90.51		431	34	7.89	397	92.11	0.416
High	176	27	15.34	149	84.66		216	44	20.37	172	79.63	0.200
NA	0						8	0		8		

P\*: comparison of variables distribution between AIEOP and iBFM Flow Network cohorts

**Abbreviations:** CD371 pos: any positivity (strong, weak, partial positive) of CD371 antigen at diagnosis; CD371 neg: negativity of CD371 antigen at diagnosis; MFC: multiparametric flow cytometry; MRD: minimal residual disease; PCR: polymerase chain reaction; SER: slow early response.

**Table 5:** Patients and leukemia features at diagnosis in the iBFM Flow Network cohort

Variable	iBFM flow network cohort					P
	Total n°	CD371 pos		CD371 neg		
		n°	%	n°	%	
<b>Total</b>	969	84	8.67	885	91.33	
<b>Age</b>						
Median	5.05	9.38		4.64		
<b>Gender</b>						0.286
Male	516	51	9.88	465	90.12	
Female	419	33	7.88	386	92.12	
NA	34	0		34	-	
<b>Translocations</b>						
ETV6-RUNX1	208	0	0.00	208	100.00	<0.001
TCF3-PBX1	27	0	0.00	27	100.00	0.152
KMT2A-AFF1	5	2	40.00	3	60.00	0.063
<b>Immunophenotype at diagnosis (EGIL)</b>						<0.001
BI-ALL	23	7	30.43	16	69.57	
BII-ALL	703	64	9.10	639	90.90	
BIII-ALL	232	12	5.17	220	94.83	
B-IV(non Burkitt)	5	0	0.00	5	100.00	
NA	6	1	-	5	-	
<b>Ambiguous leukemia</b>						
BAL (EGIL)	27	6	22.22	21	77.78	0.006
MPAL (WHO)	32	4	12.50	28	87.50	0.514

**Abbreviations:** pts: patients; n°: number; %: percentage; ALL: acute lymphoblastic leukemia; BAL: biphenotypic leukemia; MPAL: mixed-phenotype leukemia

**Figure 4:** Outcome analysis: 5-year event-free-survival of CD371<sup>pos</sup> BCP-ALLs vs. CD371<sup>neg</sup> BCP-ALLs

